



Full wwPDB X-ray Structure Validation Report ⓘ

Mar 8, 2026 – 10:08 AM UTC

PDB ID : 4TKF / pdb_00004tkf
Title : Crystal Structure of human Tankyrase 2 in complex with IWR-1.
Authors : Qiu, W.; Lam, R.; Romanov, V.; Gordon, R.; Gebremeskel, S.; Vodsedalek, J.; Thompson, C.; Beletskaya, I.; Battaile, K.P.; Pai, E.F.; Chirgadze, N.Y.
Deposited on : 2014-05-26
Resolution : 2.60 Å(reported)

This is a Full wwPDB X-ray Structure Validation Report for a publicly released PDB entry.

We welcome your comments at validation@mail.wwpdb.org

A user guide is available at

<https://www.wwpdb.org/validation/2017/XrayValidationReportHelp>

with specific help available everywhere you see the ⓘ symbol.

The types of validation reports are described at

<http://www.wwpdb.org/validation/2017/FAQs#types>.

The following versions of software and data (see [references ⓘ](#)) were used in the production of this report:

MolProbity : 4-5-2 with Phenix2.0
Mogul : 2022.3.0, CSD as543be (2022)
Xtrriage (Phenix) : 2.0
EDS : 3.0
Buster-report : wwPDB partial adaption of 1.1.7 (2018)
Percentile statistics : 20250101.v01 (using entries in the PDB archive January 1st 2025)
CCP4 : 9.0.010 (Gargrove)
Density-Fitness : 1.0.12
Ideal geometry (proteins) : Engh & Huber (2001)
Ideal geometry (DNA, RNA) : Parkinson et al. (1996)
Validation Pipeline (wwPDB-VP) : 2.49

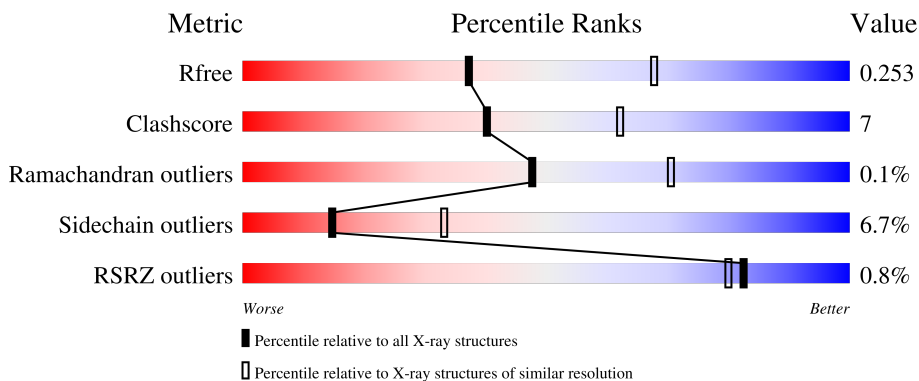
1 Overall quality at a glance

The following experimental techniques were used to determine the structure:

X-RAY DIFFRACTION

The reported resolution of this entry is 2.60 Å.

Percentile scores (ranging between 0-100) for global validation metrics of the entry are shown in the following graphic. The table shows the number of entries on which the scores are based.



Metric	Whole archive (#Entries)	Similar resolution (#Entries, resolution range(Å))
R_{free}	180053	4008 (2.60-2.60)
Clashscore	190562	4347 (2.60-2.60)
Ramachandran outliers	187476	4277 (2.60-2.60)
Sidechain outliers	187428	4277 (2.60-2.60)
RSRZ outliers	180081	4008 (2.60-2.60)

The table below summarises the geometric issues observed across the polymeric chains and their fit to the electron density. The red, orange, yellow and green segments of the lower bar indicate the fraction of residues that contain outliers for ≥ 3 , 2, 1 and 0 types of geometric quality criteria respectively. A grey segment represents the fraction of residues that are not modelled. The numeric value for each fraction is indicated below the corresponding segment, with a dot representing fractions $\leq 5\%$. The upper red bar (where present) indicates the fraction of residues that have poor fit to the electron density. The numeric value is given above the bar.

Mol	Chain	Length	Quality of chain
1	A	227	 67% 19% • 12%
1	B	227	 68% 20% • 10%
1	C	227	 75% 15% • 8%
1	D	227	 65% 16% • 17%

2 Entry composition [i](#)

There are 5 unique types of molecules in this entry. The entry contains 6912 atoms, of which 0 are hydrogens and 0 are deuteriums.

In the tables below, the ZeroOcc column contains the number of atoms modelled with zero occupancy, the AltConf column contains the number of residues with at least one atom in alternate conformation and the Trace column contains the number of residues modelled with at most 2 atoms.

- Molecule 1 is a protein called Tankyrase-2.

Mol	Chain	Residues	Atoms					ZeroOcc	AltConf	Trace
			Total	C	N	O	S			
1	A	199	1598	1007	296	284	11	0	0	0
1	B	204	1642	1035	303	293	11	0	0	0
1	C	208	1686	1066	308	301	11	0	1	0
1	D	188	1522	959	284	269	10	0	0	0

There are 84 discrepancies between the modelled and reference sequences:

Chain	Residue	Modelled	Actual	Comment	Reference
A	938	MET	-	initiating methionine	UNP Q9H2K2
A	939	GLY	-	expression tag	UNP Q9H2K2
A	940	SER	-	expression tag	UNP Q9H2K2
A	941	SER	-	expression tag	UNP Q9H2K2
A	942	HIS	-	expression tag	UNP Q9H2K2
A	943	HIS	-	expression tag	UNP Q9H2K2
A	944	HIS	-	expression tag	UNP Q9H2K2
A	945	HIS	-	expression tag	UNP Q9H2K2
A	946	HIS	-	expression tag	UNP Q9H2K2
A	947	HIS	-	expression tag	UNP Q9H2K2
A	948	SER	-	expression tag	UNP Q9H2K2
A	949	SER	-	expression tag	UNP Q9H2K2
A	950	GLY	-	expression tag	UNP Q9H2K2
A	951	ARG	-	expression tag	UNP Q9H2K2
A	952	GLU	-	expression tag	UNP Q9H2K2
A	953	ASN	-	expression tag	UNP Q9H2K2
A	954	LEU	-	expression tag	UNP Q9H2K2
A	955	TYR	-	expression tag	UNP Q9H2K2
A	956	PHE	-	expression tag	UNP Q9H2K2
A	957	GLN	-	expression tag	UNP Q9H2K2
A	958	GLY	-	expression tag	UNP Q9H2K2

Continued on next page...

Continued from previous page...

Chain	Residue	Modelled	Actual	Comment	Reference
B	938	MET	-	initiating methionine	UNP Q9H2K2
B	939	GLY	-	expression tag	UNP Q9H2K2
B	940	SER	-	expression tag	UNP Q9H2K2
B	941	SER	-	expression tag	UNP Q9H2K2
B	942	HIS	-	expression tag	UNP Q9H2K2
B	943	HIS	-	expression tag	UNP Q9H2K2
B	944	HIS	-	expression tag	UNP Q9H2K2
B	945	HIS	-	expression tag	UNP Q9H2K2
B	946	HIS	-	expression tag	UNP Q9H2K2
B	947	HIS	-	expression tag	UNP Q9H2K2
B	948	SER	-	expression tag	UNP Q9H2K2
B	949	SER	-	expression tag	UNP Q9H2K2
B	950	GLY	-	expression tag	UNP Q9H2K2
B	951	ARG	-	expression tag	UNP Q9H2K2
B	952	GLU	-	expression tag	UNP Q9H2K2
B	953	ASN	-	expression tag	UNP Q9H2K2
B	954	LEU	-	expression tag	UNP Q9H2K2
B	955	TYR	-	expression tag	UNP Q9H2K2
B	956	PHE	-	expression tag	UNP Q9H2K2
B	957	GLN	-	expression tag	UNP Q9H2K2
B	958	GLY	-	expression tag	UNP Q9H2K2
C	938	MET	-	initiating methionine	UNP Q9H2K2
C	939	GLY	-	expression tag	UNP Q9H2K2
C	940	SER	-	expression tag	UNP Q9H2K2
C	941	SER	-	expression tag	UNP Q9H2K2
C	942	HIS	-	expression tag	UNP Q9H2K2
C	943	HIS	-	expression tag	UNP Q9H2K2
C	944	HIS	-	expression tag	UNP Q9H2K2
C	945	HIS	-	expression tag	UNP Q9H2K2
C	946	HIS	-	expression tag	UNP Q9H2K2
C	947	HIS	-	expression tag	UNP Q9H2K2
C	948	SER	-	expression tag	UNP Q9H2K2
C	949	SER	-	expression tag	UNP Q9H2K2
C	950	GLY	-	expression tag	UNP Q9H2K2
C	951	ARG	-	expression tag	UNP Q9H2K2
C	952	GLU	-	expression tag	UNP Q9H2K2
C	953	ASN	-	expression tag	UNP Q9H2K2
C	954	LEU	-	expression tag	UNP Q9H2K2
C	955	TYR	-	expression tag	UNP Q9H2K2
C	956	PHE	-	expression tag	UNP Q9H2K2
C	957	GLN	-	expression tag	UNP Q9H2K2
C	958	GLY	-	expression tag	UNP Q9H2K2

Continued on next page...

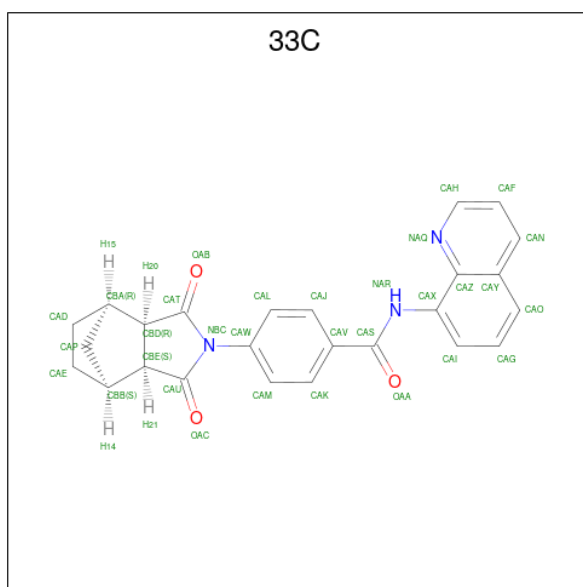
Continued from previous page...

Chain	Residue	Modelled	Actual	Comment	Reference
D	938	MET	-	initiating methionine	UNP Q9H2K2
D	939	GLY	-	expression tag	UNP Q9H2K2
D	940	SER	-	expression tag	UNP Q9H2K2
D	941	SER	-	expression tag	UNP Q9H2K2
D	942	HIS	-	expression tag	UNP Q9H2K2
D	943	HIS	-	expression tag	UNP Q9H2K2
D	944	HIS	-	expression tag	UNP Q9H2K2
D	945	HIS	-	expression tag	UNP Q9H2K2
D	946	HIS	-	expression tag	UNP Q9H2K2
D	947	HIS	-	expression tag	UNP Q9H2K2
D	948	SER	-	expression tag	UNP Q9H2K2
D	949	SER	-	expression tag	UNP Q9H2K2
D	950	GLY	-	expression tag	UNP Q9H2K2
D	951	ARG	-	expression tag	UNP Q9H2K2
D	952	GLU	-	expression tag	UNP Q9H2K2
D	953	ASN	-	expression tag	UNP Q9H2K2
D	954	LEU	-	expression tag	UNP Q9H2K2
D	955	TYR	-	expression tag	UNP Q9H2K2
D	956	PHE	-	expression tag	UNP Q9H2K2
D	957	GLN	-	expression tag	UNP Q9H2K2
D	958	GLY	-	expression tag	UNP Q9H2K2

- Molecule 2 is ZINC ION (CCD ID: ZN) (formula: Zn).

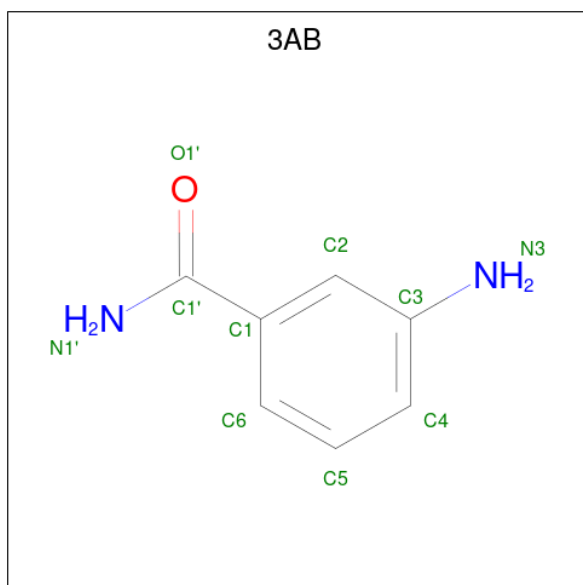
Mol	Chain	Residues	Atoms	ZeroOcc	AltConf
2	A	1	Total Zn 1 1	0	0
2	B	1	Total Zn 1 1	0	0
2	C	1	Total Zn 1 1	0	0
2	D	1	Total Zn 1 1	0	0

- Molecule 3 is 4-[(3aR,4R,7S,7aS)-1,3-dioxooctahydro-2H-4,7-methanoisoindol-2-yl]-N-(quinolin-8-yl)benzamide (CCD ID: 33C) (formula: C₂₅H₂₁N₃O₃).



Mol	Chain	Residues	Atoms				ZeroOcc	AltConf
3	A	1	Total	C	N	O	0	0
			31	25	3	3		
3	B	1	Total	C	N	O	0	0
			31	25	3	3		
3	C	1	Total	C	N	O	0	0
			31	25	3	3		
3	D	1	Total	C	N	O	0	0
			31	25	3	3		

- Molecule 4 is 3-aminobenzamide (CCD ID: 3AB) (formula: C₇H₈N₂O).



Mol	Chain	Residues	Atoms				ZeroOcc	AltConf
4	A	1	Total	C	N	O	0	0
			10	7	2	1		
4	C	1	Total	C	N	O	0	0
			10	7	2	1		

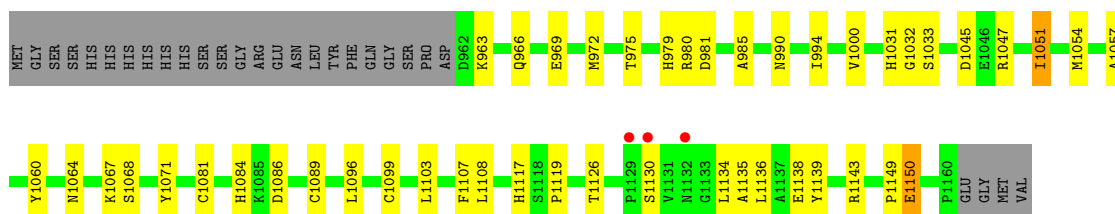
- Molecule 5 is water.

Mol	Chain	Residues	Atoms		ZeroOcc	AltConf
5	A	68	Total	O	0	0
			68	68		
5	B	80	Total	O	0	0
			80	80		
5	C	104	Total	O	0	0
			104	104		
5	D	64	Total	O	0	0
			64	64		

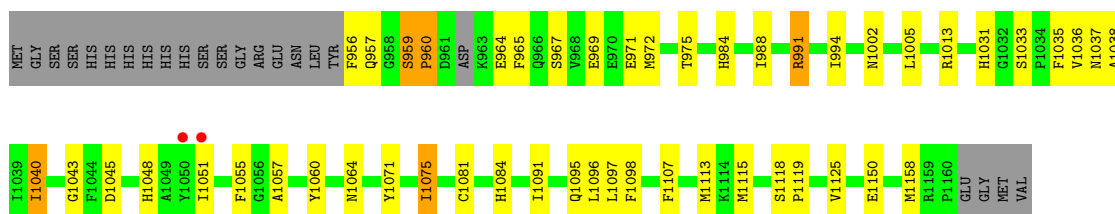
3 Residue-property plots [i](#)

These plots are drawn for all protein, RNA, DNA and oligosaccharide chains in the entry. The first graphic for a chain summarises the proportions of the various outlier classes displayed in the second graphic. The second graphic shows the sequence view annotated by issues in geometry and electron density. Residues are color-coded according to the number of geometric quality criteria for which they contain at least one outlier: green = 0, yellow = 1, orange = 2 and red = 3 or more. A red dot above a residue indicates a poor fit to the electron density ($RSRZ > 2$). Stretches of 2 or more consecutive residues without any outlier are shown as a green connector. Residues present in the sample, but not in the model, are shown in grey.

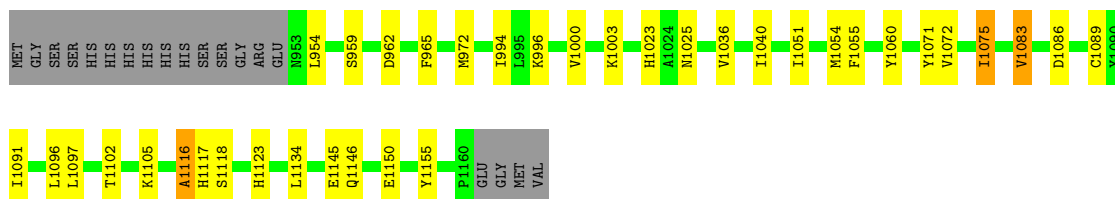
- Molecule 1: Tankyrase-2



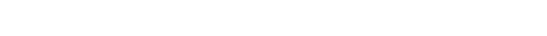
- Molecule 1: Tankyrase-2

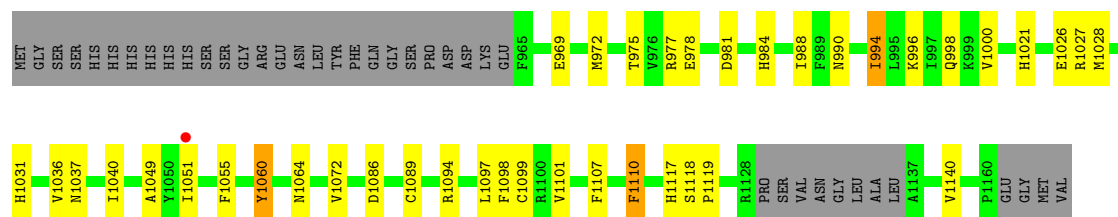


- Molecule 1: Tankyrase-2



- Molecule 1: Tankyrase-2





4 Data and refinement statistics

Property	Value	Source
Space group	P 21 21 21	Depositor
Cell constants a, b, c, α , β , γ	73.36Å 78.59Å 151.75Å 90.00° 90.00° 90.00°	Depositor
Resolution (Å)	19.60 – 2.60 19.60 – 2.60	Depositor EDS
% Data completeness (in resolution range)	99.6 (19.60-2.60) 99.5 (19.60-2.60)	Depositor EDS
R_{merge}	0.12	Depositor
R_{sym}	(Not available)	Depositor
$\langle I/\sigma(I) \rangle$ ¹	2.85 (at 2.59Å)	Xtrriage
Refinement program	BUSTER-TNT BUSTER 2.8.0, BUSTER 2.8.0	Depositor
R, R_{free}	0.166 , 0.251 0.171 , 0.253	Depositor DCC
R_{free} test set	1389 reflections (5.03%)	wwPDB-VP
Wilson B-factor (Å ²)	35.6	Xtrriage
Anisotropy	0.613	Xtrriage
Bulk solvent k_{sol} (e/Å ³), B_{sol} (Å ²)	0.34 , 60.4	EDS
L-test for twinning ²	$\langle L \rangle = 0.48$, $\langle L^2 \rangle = 0.32$	Xtrriage
Estimated twinning fraction	No twinning to report.	Xtrriage
F_o, F_c correlation	0.95	EDS
Total number of atoms	6912	wwPDB-VP
Average B, all atoms (Å ²)	40.0	wwPDB-VP

Xtrriage's analysis on translational NCS is as follows: *The largest off-origin peak in the Patterson function is 17.37% of the height of the origin peak. No significant pseudotranslation is detected.*

¹Intensities estimated from amplitudes.

²Theoretical values of $\langle |L| \rangle$, $\langle L^2 \rangle$ for acentric reflections are 0.5, 0.333 respectively for untwinned datasets, and 0.375, 0.2 for perfectly twinned datasets.

5 Model quality i

5.1 Standard geometry i

Bond lengths and bond angles in the following residue types are not validated in this section: ZN, 33C, 3AB

The Z score for a bond length (or angle) is the number of standard deviations the observed value is removed from the expected value. A bond length (or angle) with $|Z| > 5$ is considered an outlier worth inspection. RMSZ is the root-mean-square of all Z scores of the bond lengths (or angles).

Mol	Chain	Bond lengths		Bond angles	
		RMSZ	# Z >5	RMSZ	# Z >5
1	A	0.85	0/1641	1.35	6/2207 (0.3%)
1	B	0.89	1/1686 (0.1%)	1.41	18/2265 (0.8%)
1	C	0.88	0/1736	1.37	3/2335 (0.1%)
1	D	0.85	0/1563	1.35	4/2098 (0.2%)
All	All	0.87	1/6626 (0.0%)	1.37	31/8905 (0.3%)

All (1) bond length outliers are listed below:

Mol	Chain	Res	Type	Atoms	Z	Observed(Å)	Ideal(Å)
1	B	960	PRO	N-CD	5.18	1.54	1.47

All (31) bond angle outliers are listed below:

Mol	Chain	Res	Type	Atoms	Z	Observed(°)	Ideal(°)
1	A	1045	ASP	CA-CB-CG	7.99	120.59	112.60
1	C	1116	ALA	N-CA-C	-6.96	105.32	113.88
1	D	990	ASN	N-CA-C	-6.51	106.55	114.75
1	B	1035	PHE	N-CA-C	6.22	119.81	112.72
1	B	1051	ILE	CB-CA-C	6.04	121.19	111.29
1	B	1013	ARG	CA-C-N	5.97	128.20	120.44
1	B	1013	ARG	C-N-CA	5.97	128.20	120.44
1	B	1150	GLU	N-CA-C	5.95	117.76	111.28
1	A	985	ALA	N-CA-C	5.86	117.53	111.03
1	A	1099	CYS	N-CA-C	5.72	119.39	110.17
1	A	1135	ALA	N-CA-C	5.72	117.19	111.07
1	B	1036	VAL	N-CA-C	5.71	117.13	110.62
1	A	1150	GLU	N-CA-C	5.67	117.92	111.11
1	C	1083	VAL	N-CA-CB	5.57	116.95	110.65
1	D	1099	CYS	N-CA-C	5.46	118.64	109.95
1	D	977	ARG	CA-C-N	5.43	128.55	120.95

Continued on next page...

Continued from previous page...

Mol	Chain	Res	Type	Atoms	Z	Observed(°)	Ideal(°)
1	D	977	ARG	C-N-CA	5.43	128.55	120.95
1	B	1051	ILE	CA-C-N	5.38	127.88	120.72
1	B	1051	ILE	C-N-CA	5.38	127.88	120.72
1	B	1055	PHE	N-CA-C	5.37	118.84	112.72
1	B	984	HIS	N-CA-C	5.25	116.69	111.07
1	B	1002	ASN	CA-C-N	5.23	127.54	120.38
1	B	1002	ASN	C-N-CA	5.23	127.54	120.38
1	C	1150	GLU	N-CA-C	5.18	116.61	111.07
1	B	965	PHE	CA-C-N	5.07	127.08	120.28
1	B	965	PHE	C-N-CA	5.07	127.08	120.28
1	B	959	SER	CA-C-N	-5.06	113.51	119.84
1	B	959	SER	C-N-CA	-5.06	113.51	119.84
1	B	1038	ALA	CA-C-N	5.02	126.89	120.56
1	B	1038	ALA	C-N-CA	5.02	126.89	120.56
1	A	963	LYS	N-CA-C	-5.01	106.33	112.90

There are no chirality outliers.

There are no planarity outliers.

5.2 Too-close contacts [\(i\)](#)

In the following table, the Non-H and H(model) columns list the number of non-hydrogen atoms and hydrogen atoms in the chain respectively. The H(added) column lists the number of hydrogen atoms added and optimized by MolProbity. The Clashes column lists the number of clashes within the asymmetric unit, whereas Symm-Clashes lists symmetry-related clashes.

Mol	Chain	Non-H	H(model)	H(added)	Clashes	Symm-Clashes
1	A	1598	0	1528	23	0
1	B	1642	0	1572	20	0
1	C	1686	0	1612	22	0
1	D	1522	0	1452	22	0
2	A	1	0	0	0	0
2	B	1	0	0	0	0
2	C	1	0	0	0	0
2	D	1	0	0	0	0
3	A	31	0	21	3	0
3	B	31	0	21	3	0
3	C	31	0	21	7	0
3	D	31	0	21	2	0
4	A	10	0	8	2	0
4	C	10	0	8	3	0

Continued on next page...

Continued from previous page...

Mol	Chain	Non-H	H(model)	H(added)	Clashes	Symm-Clashes
5	A	68	0	0	0	0
5	B	80	0	0	0	0
5	C	104	0	0	1	0
5	D	64	0	0	1	0
All	All	6912	0	6264	85	0

The all-atom clashscore is defined as the number of clashes found per 1000 atoms (including hydrogen atoms). The all-atom clashscore for this structure is 7.

All (85) close contacts within the same asymmetric unit are listed below, sorted by their clash magnitude.

Atom-1	Atom-2	Interatomic distance (Å)	Clash overlap (Å)
1:C:1105:LYS:H	1:C:1123:HIS:HD2	1.27	0.81
1:D:1000:VAL:HG21	1:D:1040:ILE:HD12	1.64	0.79
1:B:1107:PHE:CE2	1:B:1113:MET:HE1	2.26	0.71
1:D:1110:PHE:H	1:D:1110:PHE:HD1	1.40	0.70
1:C:1040:ILE:HD11	1:C:1097:LEU:HD21	1.74	0.67
1:A:1060:TYR:CD1	3:A:1202:33C:H20	2.30	0.67
1:B:1057:ALA:O	1:D:1117:HIS:HE1	1.78	0.67
1:B:1075:ILE:HD12	3:B:1202:33C:H14	1.76	0.66
1:C:1060:TYR:CD1	3:C:1202:33C:H20	2.30	0.65
1:A:969:GLU:HG3	1:A:994:ILE:HG13	1.79	0.65
1:B:1031:HIS:HD2	1:B:1060:TYR:O	1.81	0.64
1:D:1040:ILE:HD11	1:D:1097:LEU:CD2	2.29	0.63
1:A:1031:HIS:CE1	1:A:1033:SER:HB2	2.34	0.63
1:B:972:MET:HG2	1:B:994:ILE:HD11	1.80	0.62
3:C:1202:33C:H15	4:C:1203:3AB:H2	1.82	0.62
1:C:1105:LYS:H	1:C:1123:HIS:CD2	2.14	0.61
1:C:972:MET:HG2	1:C:994:ILE:HD11	1.82	0.60
1:A:1057:ALA:O	1:C:1117:HIS:HE1	1.84	0.60
1:D:1072:VAL:HG11	1:D:1094:ARG:HB3	1.84	0.59
1:D:1031:HIS:HD2	1:D:1060:TYR:O	1.87	0.58
1:A:1031:HIS:HD2	1:A:1060:TYR:O	1.87	0.57
1:A:972:MET:HG2	1:A:994:ILE:HD11	1.86	0.56
1:C:962:ASP:HB3	1:C:965[A]:PHE:HD2	1.72	0.55
1:D:972:MET:HG2	1:D:994:ILE:HD12	1.87	0.55
1:D:1060:TYR:CD1	3:D:1202:33C:H20	2.43	0.54
1:C:1075:ILE:CD1	3:C:1202:33C:H14	2.37	0.54
1:D:978:GLU:CD	1:D:978:GLU:H	2.15	0.54
1:A:972:MET:HG2	1:A:994:ILE:CD1	2.38	0.54
1:D:1107:PHE:CG	1:D:1119:PRO:HG2	2.44	0.53

Continued on next page...

Continued from previous page...

Atom-1	Atom-2	Interatomic distance (Å)	Clash overlap (Å)
1:C:1054:MET:HE3	1:C:1055:PHE:CZ	2.43	0.53
1:C:1025:ASN:OD1	1:D:1021:HIS:HE1	1.91	0.52
1:B:1107:PHE:HE2	1:B:1113:MET:HE1	1.73	0.52
1:B:971:GLU:HG2	1:B:1098:PHE:CZ	2.44	0.52
1:B:1031:HIS:CE1	1:B:1033:SER:HB2	2.45	0.52
1:A:1081:CYS:SG	1:A:1084:HIS:HB2	2.50	0.51
1:D:1040:ILE:HD11	1:D:1097:LEU:HD21	1.91	0.51
1:D:1055:PHE:HB2	1:D:1140:VAL:HG21	1.93	0.51
1:B:972:MET:HG2	1:B:994:ILE:CD1	2.41	0.51
1:D:1086:ASP:HB3	1:D:1089:CYS:HB2	1.93	0.50
1:B:1115:MET:HE1	1:B:1125:VAL:HG21	1.93	0.50
1:B:991:ARG:NH1	1:B:1158:MET:SD	2.85	0.50
1:C:972:MET:HG2	1:C:994:ILE:CD1	2.41	0.50
1:A:975:THR:HB	1:A:1064:ASN:HA	1.94	0.49
1:A:1138:GLU:CD	4:A:1203:3AB:H4	2.38	0.49
1:A:1047:ARG:HG2	1:C:1118:SER:O	2.14	0.48
1:A:1108:LEU:HD12	1:A:1126:THR:HB	1.96	0.48
1:A:1071:TYR:CD1	3:A:1202:33C:H12	2.49	0.47
1:C:1102:THR:HB	1:C:1146:GLN:HG2	1.97	0.46
3:A:1202:33C:OAA	3:A:1202:33C:H3	2.14	0.46
1:A:1143:ARG:NH2	1:C:1145:GLU:OE1	2.44	0.46
1:B:1071:TYR:CE1	3:B:1202:33C:H12	2.50	0.45
1:B:1107:PHE:CG	1:B:1119:PRO:HG2	2.51	0.45
1:A:1051:ILE:H	1:A:1051:ILE:HG13	1.56	0.45
1:C:1071:TYR:CE1	3:C:1202:33C:H12	2.51	0.45
3:C:1202:33C:CAD	4:C:1203:3AB:HN1'	2.29	0.45
3:C:1202:33C:H6	4:C:1203:3AB:HN1'	1.83	0.44
1:C:1096:LEU:HB2	1:C:1155:TYR:CE1	2.53	0.44
1:A:1000:VAL:HB	1:A:1149:PRO:O	2.19	0.43
1:B:1060:TYR:CD1	3:B:1202:33C:H20	2.53	0.43
1:B:1005:LEU:HD21	1:B:1043:GLY:HA3	2.00	0.43
1:C:1000:VAL:HG21	1:C:1040:ILE:HD12	1.99	0.43
1:D:1026:GLU:HA	1:D:1101:VAL:O	2.18	0.43
1:B:975:THR:HB	1:B:1064:ASN:HA	2.01	0.43
1:A:1103:LEU:HD21	1:A:1139:TYR:HB3	2.01	0.43
1:D:1028:MET:HB3	1:D:1098:PHE:CZ	2.54	0.43
1:C:1060:TYR:HB2	3:C:1202:33C:H15	1.99	0.43
1:D:1060:TYR:N	1:D:1060:TYR:HD1	2.15	0.43
1:B:1037:ASN:HD21	1:B:1095:GLN:HE22	1.67	0.42
1:C:1054:MET:HE2	1:C:1134:LEU:HG	2.00	0.42
1:D:1049:ALA:HB2	3:D:1202:33C:H19	2.01	0.42

Continued on next page...

Continued from previous page...

Atom-1	Atom-2	Interatomic distance (Å)	Clash overlap (Å)
1:A:979:HIS:C	1:A:981:ASP:H	2.28	0.42
1:D:975:THR:HB	1:D:1064:ASN:HA	2.02	0.42
1:A:1032:GLY:HA3	1:A:1068:SER:O	2.20	0.42
1:D:1060:TYR:CD1	1:D:1060:TYR:N	2.87	0.42
1:A:1086:ASP:HB3	1:A:1089:CYS:HB2	2.02	0.41
1:A:1107:PHE:CG	1:A:1119:PRO:HG2	2.55	0.41
1:D:981:ASP:HB2	1:D:984:HIS:HB3	2.01	0.41
1:A:1138:GLU:OE1	4:A:1203:3AB:H4	2.20	0.41
1:B:1081:CYS:SG	1:B:1084:HIS:HB2	2.61	0.41
1:C:1023:HIS:HB2	5:C:1362:HOH:O	2.20	0.41
1:A:1117:HIS:CE1	1:C:1116:ALA:O	2.74	0.40
1:D:1027:ARG:HD2	5:D:1340:HOH:O	2.20	0.40
1:B:1045:ASP:HB3	1:B:1048:HIS:HD2	1.86	0.40
1:C:1086:ASP:HB3	1:C:1089:CYS:HB2	2.04	0.40
1:B:1040:ILE:HD11	1:B:1097:LEU:CD2	2.52	0.40

There are no symmetry-related clashes.

5.3 Torsion angles [i](#)

5.3.1 Protein backbone [i](#)

In the following table, the Percentiles column shows the percent Ramachandran outliers of the chain as a percentile score with respect to all X-ray entries followed by that with respect to entries of similar resolution.

The Analysed column shows the number of residues for which the backbone conformation was analysed, and the total number of residues.

Mol	Chain	Analysed	Favoured	Allowed	Outliers	Percentiles	
1	A	197/227 (87%)	190 (96%)	6 (3%)	1 (0%)	24	46
1	B	200/227 (88%)	193 (96%)	7 (4%)	0	100	100
1	C	207/227 (91%)	200 (97%)	7 (3%)	0	100	100
1	D	184/227 (81%)	176 (96%)	8 (4%)	0	100	100
All	All	788/908 (87%)	759 (96%)	28 (4%)	1 (0%)	48	70

All (1) Ramachandran outliers are listed below:

Mol	Chain	Res	Type
1	A	980	ARG

5.3.2 Protein sidechains [i](#)

In the following table, the Percentiles column shows the percent sidechain outliers of the chain as a percentile score with respect to all X-ray entries followed by that with respect to entries of similar resolution.

The Analysed column shows the number of residues for which the sidechain conformation was analysed, and the total number of residues.

Mol	Chain	Analysed	Rotameric	Outliers	Percentiles	
1	A	166/192 (86%)	156 (94%)	10 (6%)	17	37
1	B	172/192 (90%)	158 (92%)	14 (8%)	11	24
1	C	177/192 (92%)	167 (94%)	10 (6%)	19	40
1	D	158/192 (82%)	147 (93%)	11 (7%)	14	31
All	All	673/768 (88%)	628 (93%)	45 (7%)	15	33

All (45) residues with a non-rotameric sidechain are listed below:

Mol	Chain	Res	Type
1	A	966	GLN
1	A	990	ASN
1	A	1051	ILE
1	A	1054	MET
1	A	1067	LYS
1	A	1096	LEU
1	A	1130	SER
1	A	1134	LEU
1	A	1136	LEU
1	A	1150	GLU
1	B	956	PHE
1	B	957	GLN
1	B	959	SER
1	B	960	PRO
1	B	964	GLU
1	B	967	SER
1	B	969	GLU
1	B	988	ILE
1	B	991	ARG
1	B	1040	ILE
1	B	1075	ILE

Continued on next page...

Continued from previous page...

Mol	Chain	Res	Type
1	B	1091	ILE
1	B	1096	LEU
1	B	1118	SER
1	C	954	LEU
1	C	959	SER
1	C	996	LYS
1	C	1003	LYS
1	C	1036	VAL
1	C	1051	ILE
1	C	1072	VAL
1	C	1075	ILE
1	C	1083	VAL
1	C	1091	ILE
1	D	969	GLU
1	D	988	ILE
1	D	994	ILE
1	D	996	LYS
1	D	998	GLN
1	D	1036	VAL
1	D	1037	ASN
1	D	1051	ILE
1	D	1060	TYR
1	D	1110	PHE
1	D	1118	SER

Sometimes sidechains can be flipped to improve hydrogen bonding and reduce clashes. All (25) such sidechains are listed below:

Mol	Chain	Res	Type
1	A	966	GLN
1	A	998	GLN
1	A	1011	HIS
1	A	1031	HIS
1	A	1048	HIS
1	A	1095	GLN
1	B	966	GLN
1	B	998	GLN
1	B	1011	HIS
1	B	1031	HIS
1	B	1048	HIS
1	B	1095	GLN
1	B	1109	GLN
1	B	1132	ASN

Continued on next page...

Continued from previous page...

Mol	Chain	Res	Type
1	C	1011	HIS
1	C	1123	HIS
1	D	998	GLN
1	D	1011	HIS
1	D	1021	HIS
1	D	1031	HIS
1	D	1037	ASN
1	D	1070	GLN
1	D	1093	HIS
1	D	1095	GLN
1	D	1117	HIS

5.3.3 RNA [i](#)

There are no RNA molecules in this entry.

5.4 Non-standard residues in protein, DNA, RNA chains [i](#)

There are no non-standard protein/DNA/RNA residues in this entry.

5.5 Carbohydrates [i](#)

There are no oligosaccharides in this entry.

5.6 Ligand geometry [i](#)

Of 10 ligands modelled in this entry, 4 are monoatomic - leaving 6 for Mogul analysis.

In the following table, the Counts columns list the number of bonds (or angles) for which Mogul statistics could be retrieved, the number of bonds (or angles) that are observed in the model and the number of bonds (or angles) that are defined in the Chemical Component Dictionary. The Link column lists molecule types, if any, to which the group is linked. The Z score for a bond length (or angle) is the number of standard deviations the observed value is removed from the expected value. A bond length (or angle) with $|Z| > 2$ is considered an outlier worth inspection. RMSZ is the root-mean-square of all Z scores of the bond lengths (or angles).

Mol	Type	Chain	Res	Link	Bond lengths			Bond angles		
					Counts	RMSZ	# Z > 2	Counts	RMSZ	# Z > 2
3	33C	A	1202	-	36,36,36	2.08	5 (13%)	54,54,54	1.56	11 (20%)
4	3AB	A	1203	-	10,10,10	0.78	0	13,13,13	0.75	0

Mol	Type	Chain	Res	Link	Bond lengths			Bond angles		
					Counts	RMSZ	# Z > 2	Counts	RMSZ	# Z > 2
3	33C	B	1202	-	36,36,36	2.09	5 (13%)	54,54,54	1.64	11 (20%)
3	33C	D	1202	-	36,36,36	2.21	5 (13%)	54,54,54	1.51	10 (18%)
4	3AB	C	1203	-	10,10,10	0.95	0	13,13,13	0.58	0
3	33C	C	1202	-	36,36,36	2.18	6 (16%)	54,54,54	1.51	12 (22%)

In the following table, the Chirals column lists the number of chiral outliers, the number of chiral centers analysed, the number of these observed in the model and the number defined in the Chemical Component Dictionary. Similar counts are reported in the Torsion and Rings columns. '-' means no outliers of that kind were identified.

Mol	Type	Chain	Res	Link	Chirals	Torsions	Rings
3	33C	A	1202	-	-	4/12/49/49	0/7/6/6
4	3AB	A	1203	-	-	0/4/4/4	0/1/1/1
3	33C	B	1202	-	-	4/12/49/49	0/7/6/6
3	33C	D	1202	-	-	2/12/49/49	0/7/6/6
4	3AB	C	1203	-	-	0/4/4/4	0/1/1/1
3	33C	C	1202	-	-	4/12/49/49	0/7/6/6

All (21) bond length outliers are listed below:

Mol	Chain	Res	Type	Atoms	Z	Observed(Å)	Ideal(Å)
3	D	1202	33C	CAW-NBC	-7.53	1.32	1.44
3	C	1202	33C	CAE-CAD	-7.25	1.34	1.54
3	A	1202	33C	CAE-CAD	-7.16	1.34	1.54
3	C	1202	33C	CAW-NBC	-7.12	1.33	1.44
3	D	1202	33C	CAE-CAD	-7.06	1.34	1.54
3	B	1202	33C	CAE-CAD	-6.98	1.35	1.54
3	B	1202	33C	CAW-NBC	-6.97	1.33	1.44
3	A	1202	33C	CAW-NBC	-6.82	1.33	1.44
3	D	1202	33C	CAU-NBC	-4.66	1.33	1.40
3	C	1202	33C	CAT-NBC	-4.34	1.33	1.40
3	D	1202	33C	CAT-NBC	-4.32	1.33	1.40
3	B	1202	33C	CAT-NBC	-4.28	1.33	1.40
3	A	1202	33C	CAT-NBC	-4.16	1.34	1.40
3	C	1202	33C	CAU-NBC	-3.97	1.34	1.40
3	B	1202	33C	CAU-NBC	-3.75	1.34	1.40
3	A	1202	33C	CAU-NBC	-3.57	1.34	1.40
3	C	1202	33C	CAX-NAR	-2.37	1.34	1.41
3	A	1202	33C	CAX-NAR	-2.33	1.34	1.41
3	C	1202	33C	CBE-CAU	2.30	1.54	1.51
3	B	1202	33C	CAX-NAR	-2.20	1.35	1.41

Continued on next page...

Continued from previous page...

Mol	Chain	Res	Type	Atoms	Z	Observed(Å)	Ideal(Å)
3	D	1202	33C	CBE-CAU	2.12	1.54	1.51

All (44) bond angle outliers are listed below:

Mol	Chain	Res	Type	Atoms	Z	Observed(°)	Ideal(°)
3	D	1202	33C	CAX-CAZ-NAQ	4.09	120.78	117.50
3	C	1202	33C	CAH-NAQ-CAZ	4.03	122.06	117.31
3	D	1202	33C	CAH-NAQ-CAZ	4.03	122.06	117.31
3	B	1202	33C	CAX-CAZ-NAQ	4.00	120.71	117.50
3	B	1202	33C	CAH-NAQ-CAZ	3.90	121.90	117.31
3	A	1202	33C	CAX-CAZ-NAQ	3.87	120.61	117.50
3	A	1202	33C	CAH-NAQ-CAZ	3.77	121.75	117.31
3	C	1202	33C	CAX-CAZ-NAQ	3.51	120.32	117.50
3	A	1202	33C	OAC-CAU-CBE	-3.47	123.08	127.51
3	D	1202	33C	CAY-CAZ-NAQ	-3.29	119.15	122.63
3	B	1202	33C	CAY-CAZ-NAQ	-3.15	119.30	122.63
3	B	1202	33C	OAC-CAU-CBE	-2.84	123.88	127.51
3	B	1202	33C	CBD-CAT-NBC	2.66	111.51	108.24
3	B	1202	33C	CAE-CBB-CBE	2.65	111.62	108.04
3	C	1202	33C	CAY-CAZ-NAQ	-2.65	119.84	122.63
3	B	1202	33C	CAD-CAE-CBB	2.58	107.74	103.50
3	A	1202	33C	CAF-CAH-NAQ	-2.55	120.22	123.97
3	D	1202	33C	OAB-CAT-CBD	-2.52	124.30	127.51
3	A	1202	33C	CAY-CAZ-NAQ	-2.50	119.99	122.63
3	A	1202	33C	OAB-CAT-CBD	-2.44	124.40	127.51
3	B	1202	33C	CAP-CBA-CBD	-2.40	97.88	101.94
3	A	1202	33C	CBD-CAT-NBC	2.40	111.19	108.24
3	A	1202	33C	CBE-CAU-NBC	2.39	111.18	108.24
3	B	1202	33C	CAK-CAV-CAJ	2.39	121.61	118.57
3	C	1202	33C	CBD-CAT-NBC	2.37	111.16	108.24
3	B	1202	33C	CBE-CBD-CAT	-2.35	102.47	104.89
3	C	1202	33C	CAF-CAH-NAQ	-2.32	120.56	123.97
3	D	1202	33C	CBD-CAT-NBC	2.31	111.08	108.24
3	A	1202	33C	CBB-CBE-CAU	-2.30	111.18	115.49
3	C	1202	33C	CAP-CBA-CBD	-2.30	98.06	101.94
3	B	1202	33C	CAD-CBA-CBD	2.28	111.11	108.04
3	C	1202	33C	CAK-CAV-CAJ	2.23	121.40	118.57
3	C	1202	33C	OAC-CAU-CBE	-2.22	124.68	127.51
3	C	1202	33C	OAB-CAT-CBD	-2.20	124.70	127.51
3	C	1202	33C	CBE-CAU-NBC	2.19	110.94	108.24
3	C	1202	33C	CBD-CBE-CAU	-2.18	102.64	104.89
3	D	1202	33C	CAE-CBB-CBE	2.17	110.97	108.04

Continued on next page...

Continued from previous page...

Mol	Chain	Res	Type	Atoms	Z	Observed(°)	Ideal(°)
3	C	1202	33C	CAD-CAE-CBB	2.10	106.95	103.50
3	D	1202	33C	CAP-CBA-CBD	-2.09	98.41	101.94
3	D	1202	33C	CBD-CBE-CAU	-2.09	102.74	104.89
3	D	1202	33C	CAD-CBA-CBD	2.06	110.82	108.04
3	A	1202	33C	CBE-CBD-CAT	-2.06	102.77	104.89
3	D	1202	33C	CBE-CAU-NBC	2.01	110.71	108.24
3	A	1202	33C	CAE-CAD-CBA	2.00	106.79	103.50

There are no chirality outliers.

All (14) torsion outliers are listed below:

Mol	Chain	Res	Type	Atoms
3	A	1202	33C	NAR-CAS-CAV-CAK
3	C	1202	33C	NAR-CAS-CAV-CAJ
3	B	1202	33C	NAR-CAS-CAV-CAK
3	A	1202	33C	OAA-CAS-CAV-CAK
3	C	1202	33C	OAA-CAS-CAV-CAJ
3	B	1202	33C	OAA-CAS-CAV-CAK
3	A	1202	33C	NAR-CAS-CAV-CAJ
3	C	1202	33C	NAR-CAS-CAV-CAK
3	C	1202	33C	OAA-CAS-CAV-CAK
3	A	1202	33C	OAA-CAS-CAV-CAJ
3	B	1202	33C	NAR-CAS-CAV-CAJ
3	D	1202	33C	NAR-CAS-CAV-CAK
3	B	1202	33C	OAA-CAS-CAV-CAJ
3	D	1202	33C	OAA-CAS-CAV-CAK

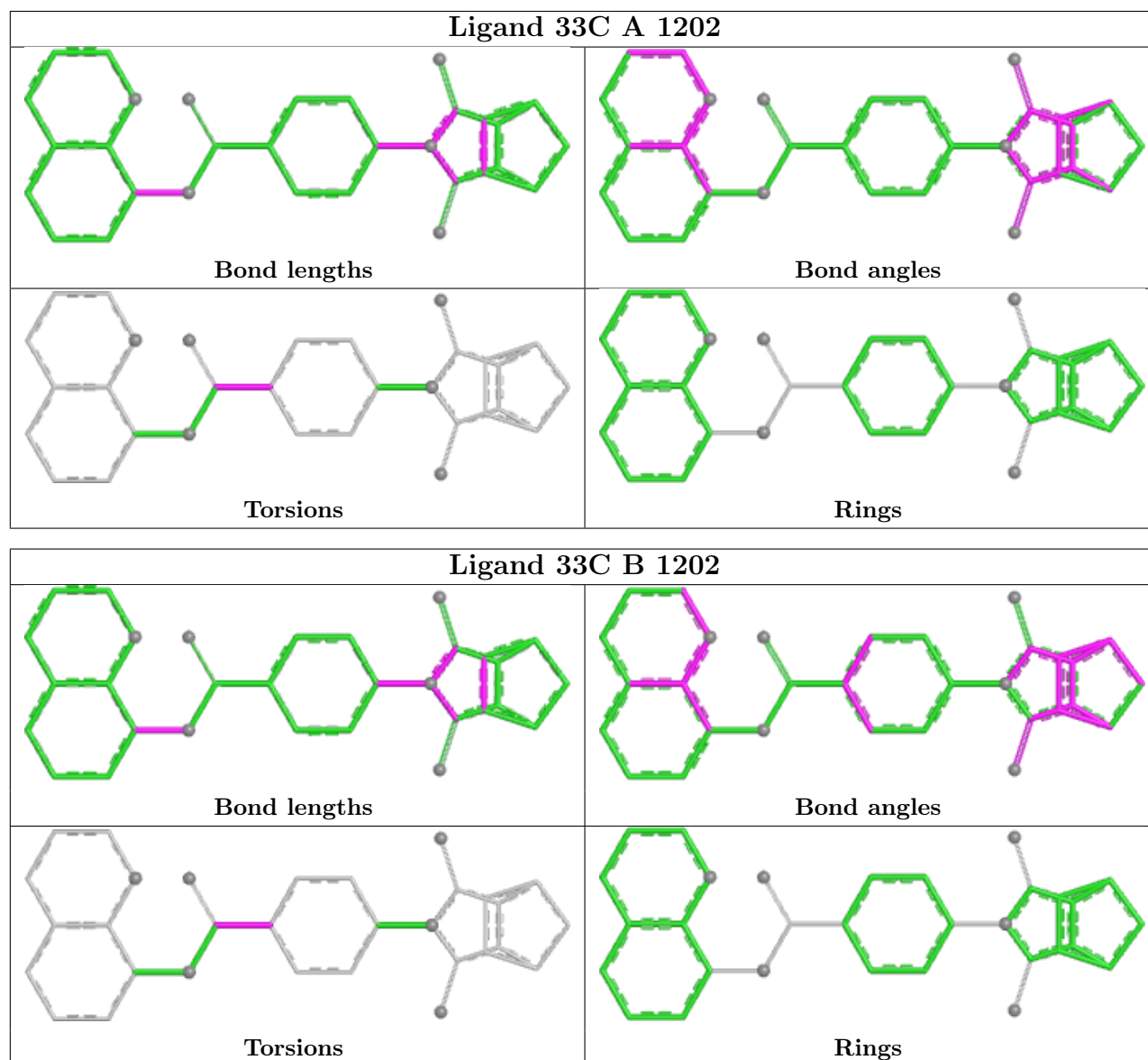
There are no ring outliers.

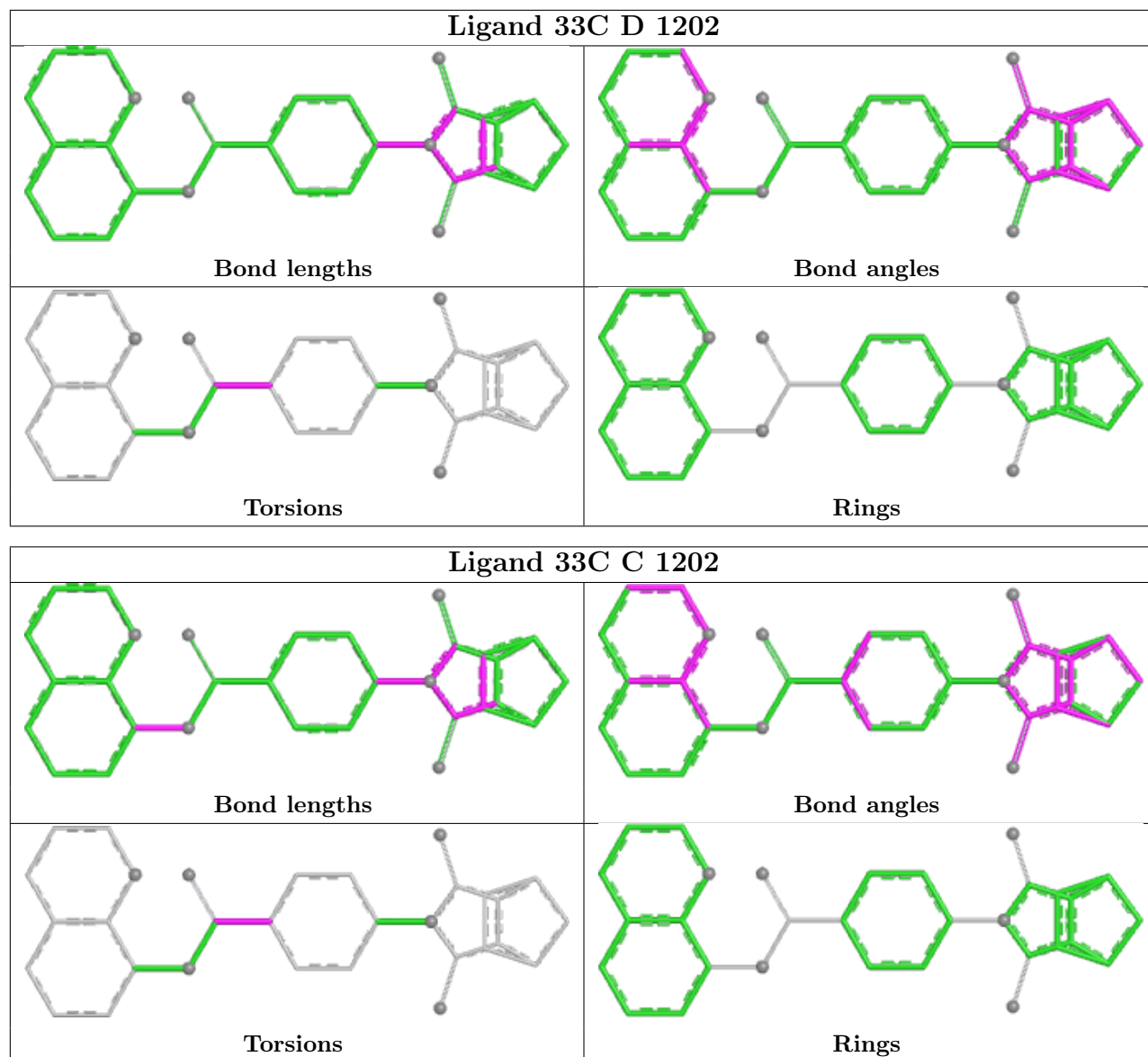
6 monomers are involved in 17 short contacts:

Mol	Chain	Res	Type	Clashes	Symm-Clashes
3	A	1202	33C	3	0
4	A	1203	3AB	2	0
3	B	1202	33C	3	0
3	D	1202	33C	2	0
4	C	1203	3AB	3	0
3	C	1202	33C	7	0

The following is a two-dimensional graphical depiction of Mogul quality analysis of bond lengths, bond angles, torsion angles, and ring geometry for all instances of the Ligand of Interest. In addition, ligands with molecular weight > 250 and outliers as shown on the validation Tables will

also be included. For torsion angles, if less than 5% of the Mogul distribution of torsion angles is within 10 degrees of the torsion angle in question, then that torsion angle is considered an outlier. Any bond that is central to one or more torsion angles identified as an outlier by Mogul will be highlighted in the graph. For rings, the root-mean-square deviation (RMSD) between the ring in question and similar rings identified by Mogul is calculated over all ring torsion angles. If the average RMSD is greater than 60 degrees and the minimal RMSD between the ring in question and any Mogul-identified rings is also greater than 60 degrees, then that ring is considered an outlier. The outliers are highlighted in purple. The color gray indicates Mogul did not find sufficient equivalents in the CSD to analyse the geometry.





5.7 Other polymers [\(i\)](#)

There are no such residues in this entry.

5.8 Polymer linkage issues [\(i\)](#)

There are no chain breaks in this entry.

6 Fit of model and data [i](#)

6.1 Protein, DNA and RNA chains [i](#)

In the following table, the column labelled ‘#RSRZ> 2’ contains the number (and percentage) of RSRZ outliers, followed by percent RSRZ outliers for the chain as percentile scores relative to all X-ray entries and entries of similar resolution. The OWAB column contains the minimum, median, 95th percentile and maximum values of the occupancy-weighted average B-factor per residue. The column labelled ‘Q< 0.9’ lists the number of (and percentage) of residues with an average occupancy less than 0.9.

Mol	Chain	Analysed	<RSRZ>	#RSRZ>2	OWAB(Å ²)	Q<0.9
1	A	199/227 (87%)	-0.23	3 (1%) 72 68	19, 39, 72, 90	0
1	B	204/227 (89%)	-0.49	2 (0%) 79 76	17, 35, 64, 78	0
1	C	208/227 (91%)	-0.50	0 100 100	17, 33, 58, 79	1 (0%)
1	D	188/227 (82%)	-0.35	1 (0%) 87 85	19, 39, 73, 97	0
All	All	799/908 (87%)	-0.40	6 (0%) 82 80	17, 36, 69, 97	1 (0%)

All (6) RSRZ outliers are listed below:

Mol	Chain	Res	Type	RSRZ
1	A	1132	ASN	2.9
1	A	1130	SER	2.5
1	B	1050	TYR	2.4
1	A	1129	PRO	2.2
1	D	1051	ILE	2.2
1	B	1051	ILE	2.1

6.2 Non-standard residues in protein, DNA, RNA chains [i](#)

There are no non-standard protein/DNA/RNA residues in this entry.

6.3 Carbohydrates [i](#)

There are no oligosaccharides in this entry.

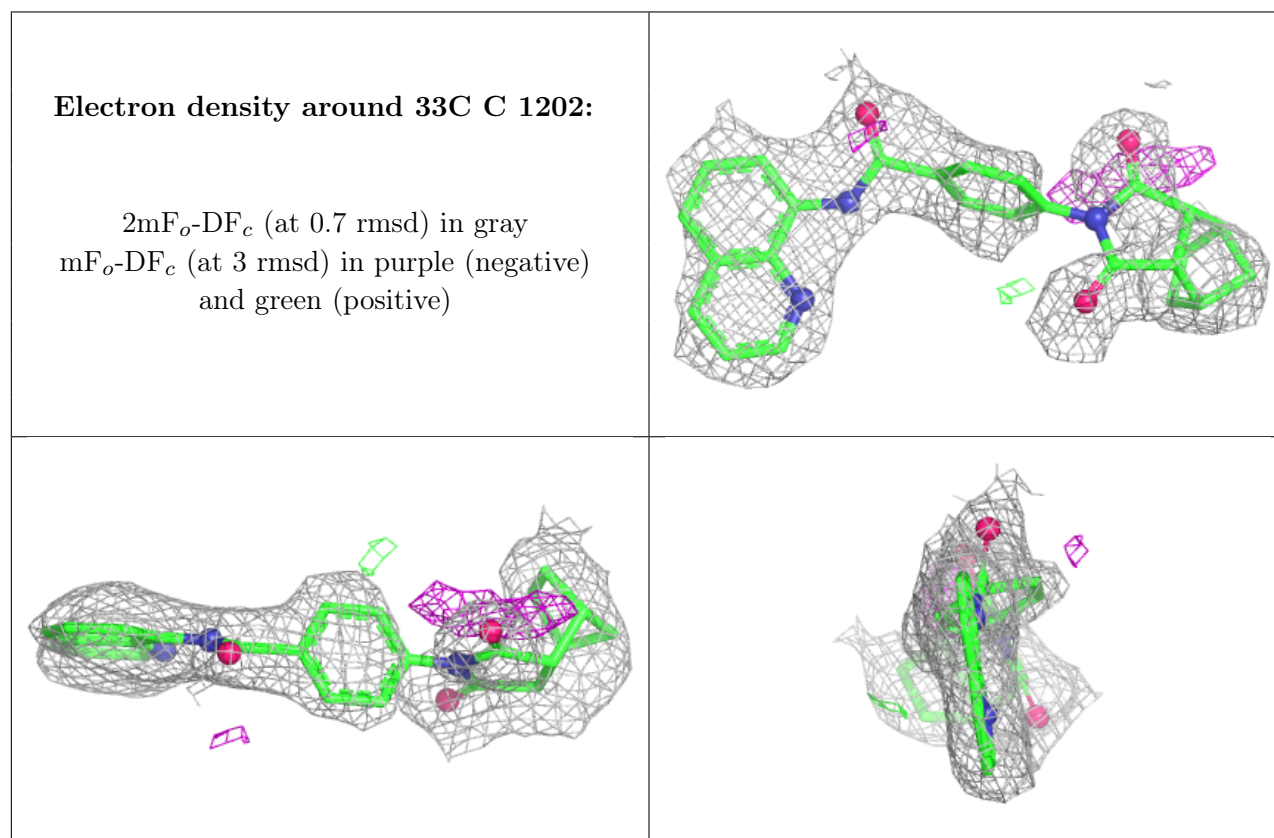
6.4 Ligands [i](#)

In the following table, the Atoms column lists the number of modelled atoms in the group and the number defined in the chemical component dictionary. The B-factors column lists the minimum,

median, 95th percentile and maximum values of B factors of atoms in the group. The column labelled 'Q< 0.9' lists the number of atoms with occupancy less than 0.9.

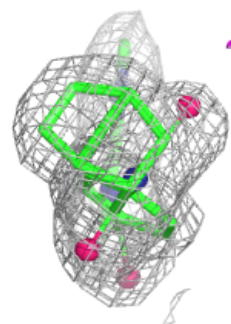
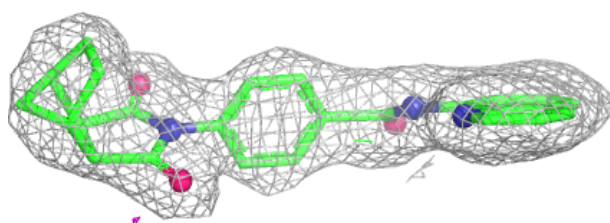
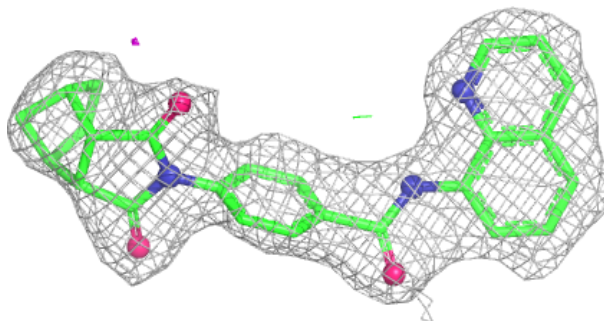
Mol	Type	Chain	Res	Atoms	RSCC	RSR	B-factors(Å ²)	Q<0.9
4	3AB	A	1203	10/10	0.89	0.18	34,71,144,162	0
3	33C	C	1202	31/31	0.90	0.12	23,53,144,184	0
3	33C	D	1202	31/31	0.95	0.07	19,35,72,76	0
3	33C	B	1202	31/31	0.95	0.07	15,35,84,142	0
4	3AB	C	1203	10/10	0.96	0.12	22,46,96,123	0
3	33C	A	1202	31/31	0.97	0.06	11,31,67,144	0
2	ZN	A	1201	1/1	0.99	0.05	53,53,53,53	0
2	ZN	B	1201	1/1	0.99	0.05	50,50,50,50	0
2	ZN	D	1201	1/1	0.99	0.03	57,57,57,57	0
2	ZN	C	1201	1/1	1.00	0.04	50,50,50,50	0

The following is a graphical depiction of the model fit to experimental electron density of all instances of the Ligand of Interest. In addition, ligands with molecular weight > 250 and outliers as shown on the geometry validation Tables will also be included. Each fit is shown from different orientation to approximate a three-dimensional view.

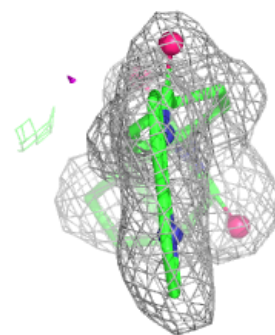
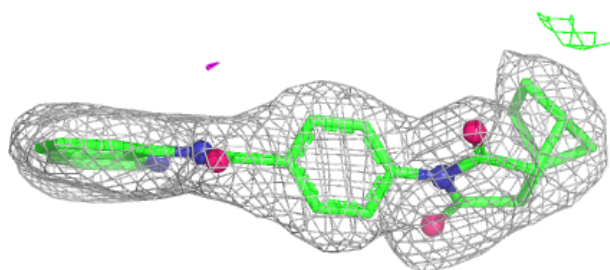
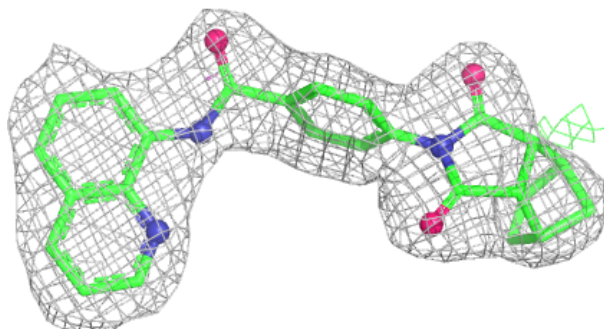


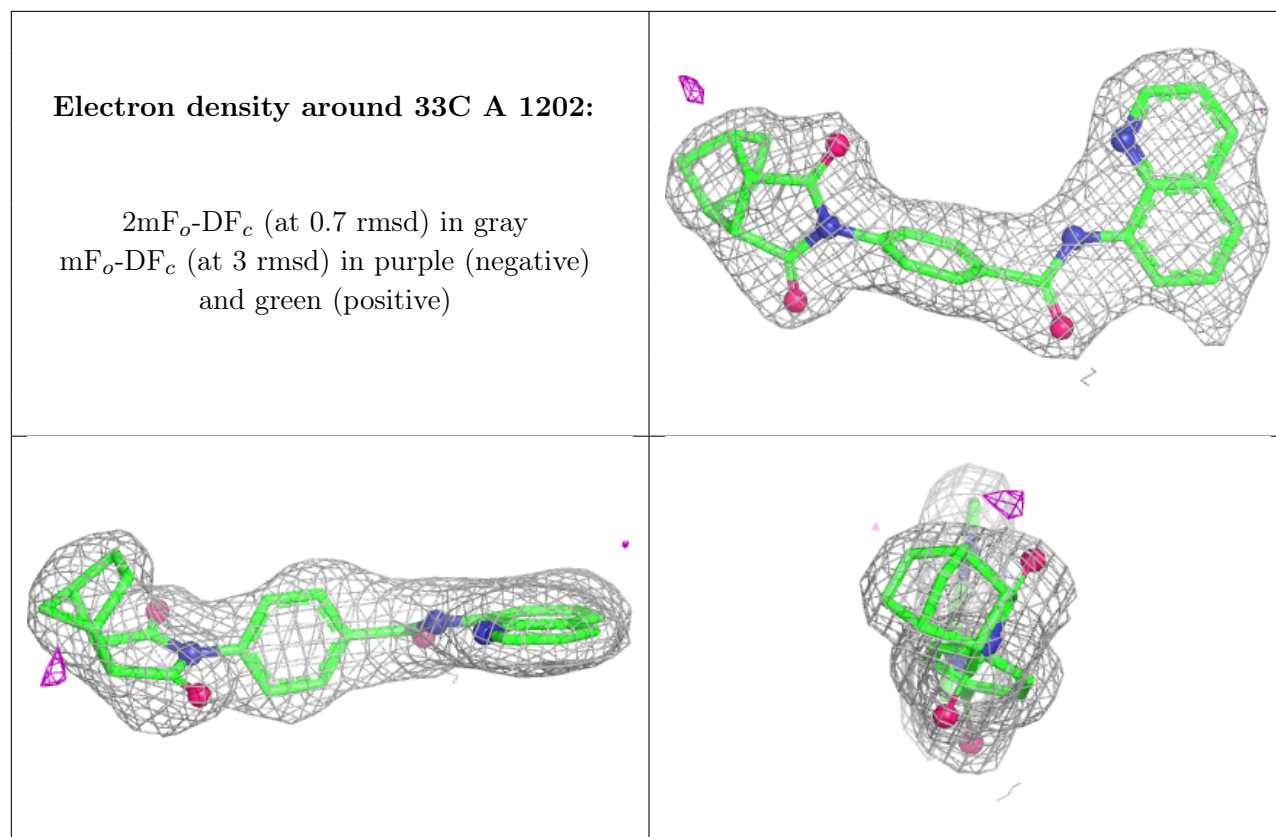
Electron density around 33C D 1202:

$2mF_o-DF_c$ (at 0.7 rmsd) in gray
 mF_o-DF_c (at 3 rmsd) in purple (negative)
and green (positive)

**Electron density around 33C B 1202:**

$2mF_o-DF_c$ (at 0.7 rmsd) in gray
 mF_o-DF_c (at 3 rmsd) in purple (negative)
and green (positive)





6.5 Other polymers [i](#)

There are no such residues in this entry.