



# wwPDB NMR Structure Validation Summary Report ⓘ

Mar 1, 2026 – 12:56 AM UTC

PDB ID : 1TKW / pdb\_00001tkw  
Title : The transient complex of poplar plastocyanin with turnip cytochrome f determined with paramagnetic NMR  
Authors : Lange, C.; Cornvik, T.; Diaz-Moreno, I.; Ubbink, M.  
Deposited on : 2004-06-09

This is a wwPDB NMR Structure Validation Summary Report for a publicly released PDB entry.

We welcome your comments at [validation@mail.wwpdb.org](mailto:validation@mail.wwpdb.org)

A user guide is available at

<https://www.wwpdb.org/validation/2017/NMRValidationReportHelp>

with specific help available everywhere you see the ⓘ symbol.

The types of validation reports are described at

<http://www.wwpdb.org/validation/2017/FAQs#types>.

---

The following versions of software and data (see [references ⓘ](#)) were used in the production of this report:

MolProbity	:	4-5-2 with Phenix2.0
Mogul	:	2022.3.0, CSD as543be (2022)
Buster-report	:	wwPDB partial adaption of 1.1.7 (2018)
Percentile statistics	:	20250101.v01 (using entries in the PDB archive January 1st 2025)
wwPDB-RCI	:	v_1n_11_5_13_A (Berjanski et al., 2005)
PANAV	:	Wang et al. (2010)
wwPDB-ShiftChecker	:	v1.2
Ideal geometry (proteins)	:	Engh & Huber (2001)
Ideal geometry (DNA, RNA)	:	Parkinson et al. (1996)
Validation Pipeline (wwPDB-VP)	:	2.49

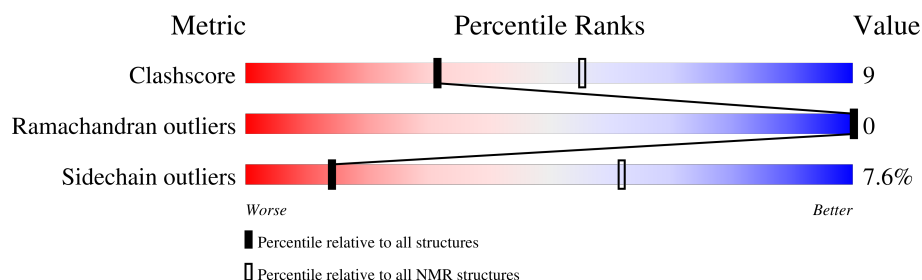
# 1 Overall quality at a glance

The following experimental techniques were used to determine the structure:

*SOLUTION NMR*

The overall completeness of chemical shifts assignment was not calculated.

Percentile scores (ranging between 0-100) for global validation metrics of the entry are shown in the following graphic. The table shows the number of entries on which the scores are based.



Metric	Whole archive (#Entries)	NMR archive (#Entries)
Clashscore	229148	14424
Ramachandran outliers	224038	12848
Sidechain outliers	223484	12823

The table below summarises the geometric issues observed across the polymeric chains and their fit to the experimental data. The red, orange, yellow and green segments indicate the fraction of residues that contain outliers for  $\geq 3$ , 2, 1 and 0 types of geometric quality criteria. A cyan segment indicates the fraction of residues that are not part of the well-defined cores, and a grey segment represents the fraction of residues that are not modelled. The numeric value for each fraction is indicated below the corresponding segment, with a dot representing fractions  $\leq 5\%$

Mol	Chain	Length	Quality of chain
1	A	99	 75% 22% .
2	B	252	 80% 17% ..

## 2 Ensemble composition and analysis

This entry contains 10 models. Model 6 is the overall representative, medoid model (most similar to other models). The authors have identified model 1 as representative, based on the following criterion: *closest to the average*.

The following residues are included in the computation of the global validation metrics.

Well-defined (core) protein residues			
Well-defined core	Residue range (total)	Backbone RMSD (Å)	Medoid model
1	A:1-A:99 (99)	0.04	3
2	B:1-B:250 (250)	0.03	6

Ill-defined regions of proteins are excluded from the global statistics.

Ligands and non-protein polymers are included in the analysis.

The models can be grouped into 2 clusters. No single-model clusters were found.

Cluster number	Models
1	1, 2, 3, 4, 5, 6, 8, 9
2	7, 10

### 3 Entry composition [i](#)

There are 4 unique types of molecules in this entry. The entry contains 5396 atoms, of which 2690 are hydrogens and 0 are deuteriums.

- Molecule 1 is a protein called Plastocyanin A.

Mol	Chain	Residues	Atoms						Trace
1	A	99	Total	C	H	N	O	S	0
			1442	466	704	116	153	3	

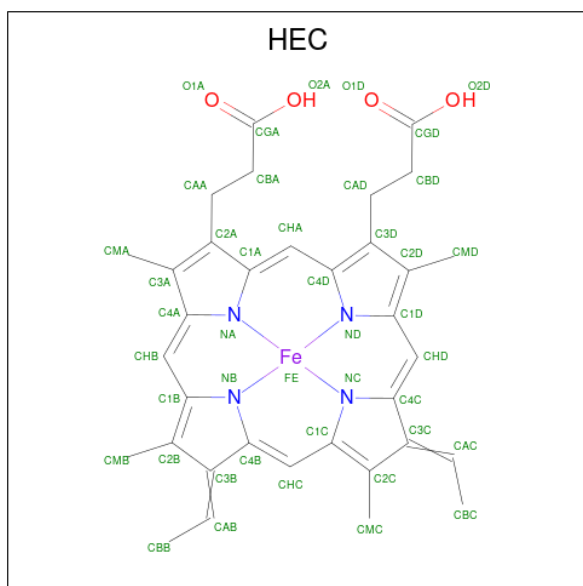
- Molecule 2 is a protein called Cytochrome f.

Mol	Chain	Residues	Atoms						Trace
2	B	250	Total	C	H	N	O	S	0
			3878	1226	1954	330	364	4	

- Molecule 3 is COPPER (II) ION (CCD ID: CU) (formula: Cu).

Mol	Chain	Residues	Atoms	
3	A	1	Total	Cu
			1	1

- Molecule 4 is HEME C (CCD ID: HEC) (formula:  $C_{34}H_{34}FeN_4O_4$ ).



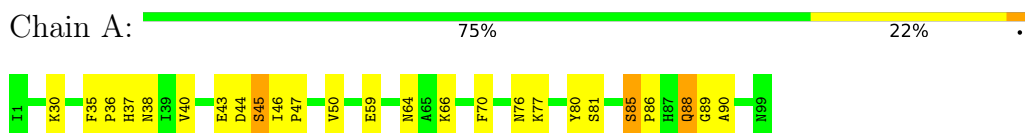
Mol	Chain	Residues	Atoms					
4	B	1	Total	C	Fe	H	N	O
			75	34	1	32	4	4

## 4 Residue-property plots

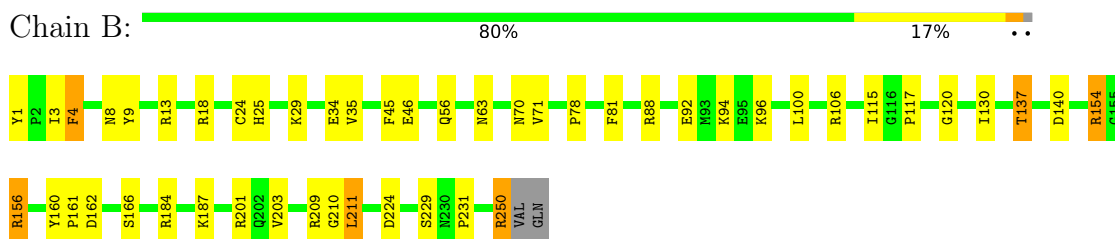
### 4.1 Average score per residue in the NMR ensemble

These plots are provided for all protein, RNA, DNA and oligosaccharide chains in the entry. The first graphic is the same as shown in the summary in section 1 of this report. The second graphic shows the sequence where residues are colour-coded according to the number of geometric quality criteria for which they contain at least one outlier: green = 0, yellow = 1, orange = 2 and red = 3 or more. Stretches of 2 or more consecutive residues without any outliers are shown as green connectors. Residues which are classified as ill-defined in the NMR ensemble, are shown in cyan with an underline colour-coded according to the previous scheme. Residues which were present in the experimental sample, but not modelled in the final structure are shown in grey.

- Molecule 1: Plastocyanin A



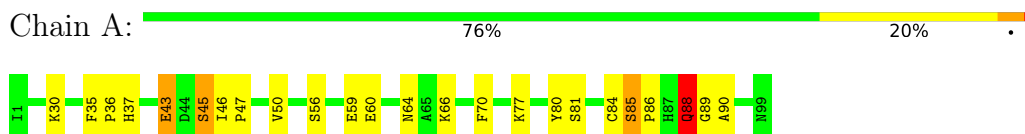
- Molecule 2: Cytochrome f



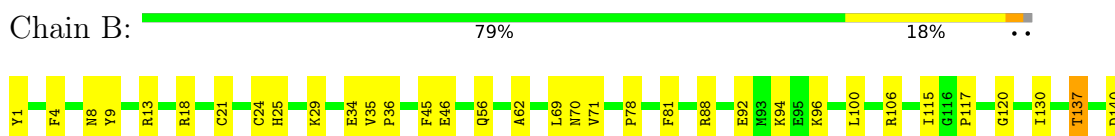
### 4.2 Residue scores for the representative (medoid) model from the NMR ensemble

The representative model is number 6. Colouring as in section 4.1 above.

- Molecule 1: Plastocyanin A



- Molecule 2: Cytochrome f





## 5 Refinement protocol and experimental data overview

The models were refined using the following method: *Rigid body docking using intermolecular pseudocontact shifts restraints, chemical shift perturbation restraints and electrostatic restraints.*

Of the 104 calculated structures, 10 were deposited, based on the following criterion: *structures with the least restraint violations.*

The following table shows the software used for structure solution, optimisation and refinement.

Software name	Classification	Version
X-PLOR	structure solution	XPLOR-NIH 2.9.1
X-PLOR	refinement	XPLOR-NIH 2.9.1

No chemical shift data was provided.

## 6 Model quality (i)

### 6.1 Standard geometry (i)

Bond lengths and bond angles in the following residue types are not validated in this section: HEC, CU

The Z score for a bond length (or angle) is the number of standard deviations the observed value is removed from the expected value. A bond length (or angle) with  $|Z| > 5$  is considered an outlier worth inspection. RMSZ is the (average) root-mean-square of all Z scores of the bond lengths (or angles).

Mol	Chain	Bond lengths		Bond angles	
		RMSZ	#Z>5	RMSZ	#Z>5
1	A	1.53±0.02	2±2/753 ( 0.3± 0.2%)	1.28±0.14	2±1/1017 ( 0.1± 0.1%)
2	B	1.50±0.01	7±2/1964 ( 0.3± 0.1%)	1.27±0.08	3±2/2669 ( 0.1± 0.1%)
All	All	1.51	86/27170 ( 0.3%)	1.28	47/36860 ( 0.1%)

Chiral center outliers are detected by calculating the chiral volume of a chiral center and verifying if the center is modelled as a planar moiety or with the opposite hand. A planarity outlier is detected by checking planarity of atoms in a peptide group, atoms in a mainchain group or atoms of a sidechain that are expected to be planar.

Mol	Chain	Chirality	Planarity
2	B	0.0±0.0	9.7±0.6
All	All	0	97

5 of 22 unique bond outliers are listed below. They are sorted according to the Z-score of the worst occurrence in the ensemble.

Mol	Chain	Res	Type	Atoms	Z	Observed(Å)	Ideal(Å)	Models	
								Worst	Total
1	A	44	ASP	N-CA	6.75	1.55	1.46	10	1
2	B	24	CYS	N-CA	6.40	1.54	1.46	10	7
1	A	58	SER	C-N	-6.38	1.25	1.34	5	1
2	B	4	PHE	N-CA	6.31	1.54	1.46	3	5
2	B	155	GLY	N-CA	5.99	1.50	1.45	7	3

5 of 13 unique angle outliers are listed below. They are sorted according to the Z-score of the worst occurrence in the ensemble.

Mol	Chain	Res	Type	Atoms	Z	Observed(°)	Ideal(°)	Models	
								Worst	Total
2	B	63	ASN	CA-CB-CG	-6.20	106.40	112.60	3	2
2	B	210	GLY	N-CA-C	-5.63	107.60	114.92	2	7

*Continued on next page...*

Continued from previous page...

Mol	Chain	Res	Type	Atoms	Z	Observed(°)	Ideal(°)	Models	
								Worst	Total
1	A	91	GLY	N-CA-C	-5.57	107.50	115.64	9	3
1	A	70	PHE	CA-CB-CG	-5.56	108.24	113.80	2	8
2	B	25	HIS	CA-CB-CG	-5.41	108.39	113.80	2	7

There are no chirality outliers.

5 of 10 unique planar outliers are listed below. They are sorted by the frequency of occurrence in the ensemble.

Mol	Chain	Res	Type	Group	Models (Total)
2	B	18	ARG	Sidechain	10
2	B	88	ARG	Sidechain	10
2	B	154	ARG	Sidechain	10
2	B	156	ARG	Sidechain	10
2	B	184	ARG	Sidechain	10

## 6.2 Too-close contacts ⓘ

In the following table, the Non-H and H(model) columns list the number of non-hydrogen atoms and hydrogen atoms in each chain respectively. The H(added) column lists the number of hydrogen atoms added and optimized by MolProbity. The Clashes column lists the number of clashes averaged over the ensemble.

Mol	Chain	Non-H	H(model)	H(added)	Clashes
1	A	738	704	704	27±8
2	B	1924	1954	1955	35±8
4	B	43	32	30	4±2
All	All	27060	26900	26890	470

The all-atom clashscore is defined as the number of clashes found per 1000 atoms (including hydrogen atoms). The all-atom clashscore for this structure is 9.

5 of 184 unique clashes are listed below, sorted by their clash magnitude.

Atom-1	Atom-2	Clash(Å)	Distance(Å)	Models	
				Worst	Total
4:B:253:HEC:CMA	4:B:253:HEC:C3A	1.63	1.75	2	2
1:A:89:GLY:HA3	4:B:253:HEC:HMD3	1.06	1.11	2	1
1:A:90:ALA:HB2	2:B:4:PHE:CZ	1.01	1.91	2	7
1:A:89:GLY:O	2:B:161:PRO:HD2	1.00	1.56	5	1
1:A:89:GLY:CA	4:B:253:HEC:HMD3	0.95	1.90	2	1

## 6.3 Torsion angles [i](#)

### 6.3.1 Protein backbone [i](#)

In the following table, the Percentiles column shows the percent Ramachandran outliers of the chain as a percentile score with respect to all PDB entries followed by that with respect to all NMR entries. The Analysed column shows the number of residues for which the backbone conformation was analysed and the total number of residues.

Mol	Chain	Analysed	Favoured	Allowed	Outliers	Percentiles	
1	A	97/99 (98%)	97±0 (100±0%)	0±0 (0±0%)	0±0 (0±0%)	100	100
2	B	248/252 (98%)	238±1 (96±0%)	10±1 (4±0%)	0±0 (0±0%)	100	100
All	All	3450/3510 (98%)	3352 (97%)	98 (3%)	0 (0%)	100	100

There are no Ramachandran outliers.

### 6.3.2 Protein sidechains [i](#)

In the following table, the Percentiles column shows the percent sidechain outliers of the chain as a percentile score with respect to all PDB entries followed by that with respect to all NMR entries. The Analysed column shows the number of residues for which the sidechain conformation was analysed and the total number of residues.

Mol	Chain	Analysed	Rotameric	Outliers	Percentiles	
1	A	82/82 (100%)	73±2 (89±2%)	9±2 (11±2%)	8	52
2	B	211/213 (99%)	198±2 (94±1%)	13±2 (6±1%)	18	67
All	All	2930/2950 (99%)	2708 (92%)	222 (8%)	14	62

5 of 49 unique residues with a non-rotameric sidechain are listed below. They are sorted by the frequency of occurrence in the ensemble.

Mol	Chain	Res	Type	Models (Total)
1	A	45	SER	10
1	A	66	LYS	10
1	A	77	LYS	10
2	B	46	GLU	10
2	B	71	VAL	10

### 6.3.3 RNA [i](#)

There are no RNA molecules in this entry.

## 6.4 Non-standard residues in protein, DNA, RNA chains [i](#)

There are no non-standard protein/DNA/RNA residues in this entry.

## 6.5 Carbohydrates [i](#)

There are no oligosaccharides in this entry.

## 6.6 Ligand geometry [i](#)

Of 2 ligands modelled in this entry, 1 is monoatomic - leaving 1 for Mogul analysis.

In the following table, the Counts columns list the number of bonds for which Mogul statistics could be retrieved, the number of bonds that are observed in the model and the number of bonds that are defined in the chemical component dictionary. The Link column lists molecule types, if any, to which the group is linked. The Z score for a bond length is the number of standard deviations the observed value is removed from the expected value. A bond length with  $|Z| > 2$  is considered an outlier worth inspection. RMSZ is the average root-mean-square of all Z scores of the bond lengths.

Mol	Type	Chain	Res	Link	Bond lengths		
					Counts	RMSZ	#Z>2
4	HEC	B	253	2	46,50,50	2.47±0.84	17±6 (36±13%)

In the following table, the Counts columns list the number of angles for which Mogul statistics could be retrieved, the number of angles that are observed in the model and the number of angles that are defined in the chemical component dictionary. The Link column lists molecule types, if any, to which the group is linked. The Z score for a bond angle is the number of standard deviations the observed value is removed from the expected value. A bond angle with  $|Z| > 2$  is considered an outlier worth inspection. RMSZ is the average root-mean-square of all Z scores of the bond angles.

Mol	Type	Chain	Res	Link	Bond angles		
					Counts	RMSZ	#Z>2
4	HEC	B	253	2	58,82,82	2.03±0.25	13±6 (22±10%)

In the following table, the Chirals column lists the number of chiral outliers, the number of chiral centers analysed, the number of these observed in the model and the number defined in the chemical component dictionary. Similar counts are reported in the Torsion and Rings columns. '-' means no outliers of that kind were identified.

Mol	Type	Chain	Res	Link	Chirals	Torsions	Rings
4	HEC	B	253	2	-	0±0,14,54,54	-

5 of 30 unique bond outliers are listed below. They are sorted according to the Z-score of the worst occurrence in the ensemble.

Mol	Chain	Res	Type	Atoms	Z	Observed(Å)	Ideal(Å)	Models	
								Worst	Total
4	B	253	HEC	CMA-C3A	16.75	1.85	1.50	10	7
4	B	253	HEC	C3C-C4C	8.04	1.60	1.46	10	9
4	B	253	HEC	CAB-C3B	7.79	1.60	1.35	10	10
4	B	253	HEC	CMB-C2B	6.93	1.65	1.50	10	3
4	B	253	HEC	CAC-C3C	6.85	1.57	1.35	2	10

5 of 31 unique angle outliers are listed below. They are sorted according to the Z-score of the worst occurrence in the ensemble.

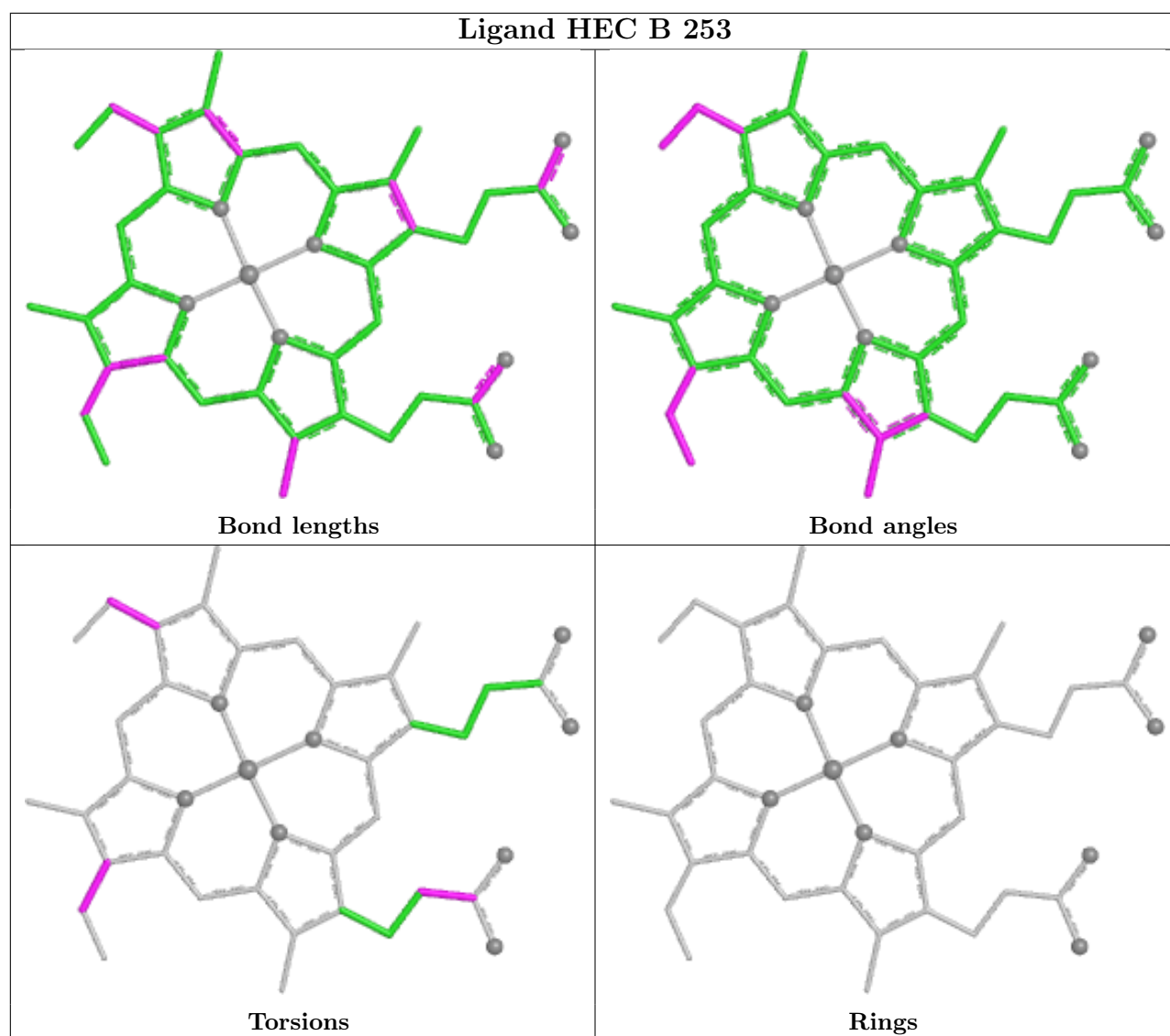
Mol	Chain	Res	Type	Atoms	Z	Observed(°)	Ideal(°)	Models	
								Worst	Total
4	B	253	HEC	CBC-CAC-C3C	9.37	108.70	127.43	4	10
4	B	253	HEC	CBB-CAB-C3B	8.38	110.68	127.43	4	10
4	B	253	HEC	C2A-C1A-NA	5.08	115.23	110.32	10	6
4	B	253	HEC	CHB-C4A-NA	4.77	119.26	124.45	10	6
4	B	253	HEC	C2C-C1C-NC	4.02	116.59	110.14	2	8

There are no chirality outliers.

There are no torsion outliers.

There are no ring outliers.

The following is a two-dimensional graphical depiction of Mogul quality analysis of bond lengths, bond angles, torsion angles, and ring geometry for all instances of the Ligand of Interest. In addition, ligands with molecular weight > 250 and outliers as shown on the validation Tables will also be included. For torsion angles, if less than 5% of the Mogul distribution of torsion angles is within 10 degrees of the torsion angle in question, then that torsion angle is considered an outlier. Any bond that is central to one or more torsion angles identified as an outlier by Mogul will be highlighted in the graph. For rings, the root-mean-square deviation (RMSD) between the ring in question and similar rings identified by Mogul is calculated over all ring torsion angles. If the average RMSD is greater than 60 degrees and the minimal RMSD between the ring in question and any Mogul-identified rings is also greater than 60 degrees, then that ring is considered an outlier. The outliers are highlighted in purple. The color gray indicates Mogul did not find sufficient equivalents in the CSD to analyse the geometry.



## 6.7 Other polymers [i](#)

There are no such molecules in this entry.

## 6.8 Polymer linkage issues [i](#)

There are no chain breaks in this entry.

## 7 Chemical shift validation

No chemical shift data were provided