



# Full wwPDB X-ray Structure Validation Report ⓘ

Mar 10, 2026 – 05:11 AM UTC

PDB ID : 4RTF / pdb\_00004rtf  
Title : Crystal structure of molecular chaperone DnaK from Mycobacterium tuberculosis H37Rv  
Authors : Filippova, E.V.; Minasov, G.; Kiryukhina, O.; Endres, M.; Babnigg, G.; Rubin, E.; Sacchettini, J.; Joachimiak, A.; Anderson, W.F.; Midwest Center for Structural Genomics (MCSG); Structures of Mtb Proteins Conferring Susceptibility to Known Mtb Inhibitors (MTBI)  
Deposited on : 2014-11-14  
Resolution : 2.77 Å(reported)

This is a Full wwPDB X-ray Structure Validation Report for a publicly released PDB entry.

We welcome your comments at [validation@mail.wwpdb.org](mailto:validation@mail.wwpdb.org)

A user guide is available at

<https://www.wwpdb.org/validation/2017/XrayValidationReportHelp>

with specific help available everywhere you see the ⓘ symbol.

The types of validation reports are described at

<http://www.wwpdb.org/validation/2017/FAQs#types>.

---

The following versions of software and data (see [references ⓘ](#)) were used in the production of this report:

MolProbity : 4-5-2 with Phenix2.0  
Mogul : 2022.3.0, CSD as543be (2022)  
Xtriage (Phenix) : 2.0  
EDS : 3.0  
Buster-report : wwPDB partial adaption of 1.1.7 (2018)  
Percentile statistics : 20250101.v01 (using entries in the PDB archive January 1st 2025)  
CCP4 : 9.0.010 (Gargrove)  
Density-Fitness : 1.0.12  
Ideal geometry (proteins) : Engh & Huber (2001)

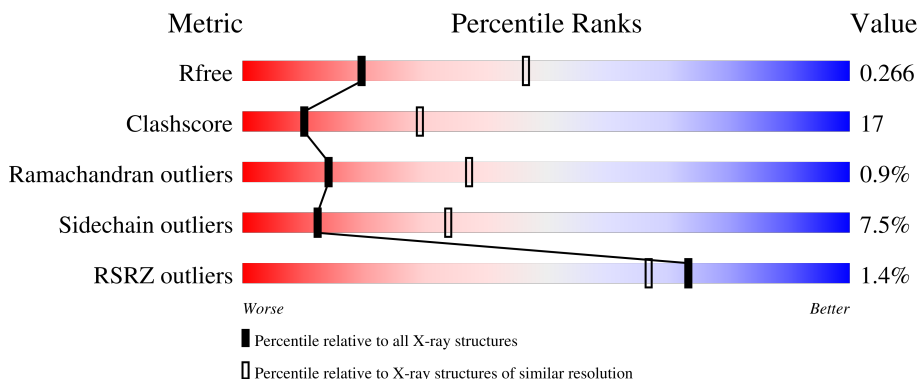
# 1 Overall quality at a glance

The following experimental techniques were used to determine the structure:

*X-RAY DIFFRACTION*

The reported resolution of this entry is 2.77 Å.

Percentile scores (ranging between 0-100) for global validation metrics of the entry are shown in the following graphic. The table shows the number of entries on which the scores are based.



Metric	Whole archive (#Entries)	Similar resolution (#Entries, resolution range(Å))
$R_{free}$	180053	5248 (2.80-2.76)
Clashscore	190562	5693 (2.80-2.76)
Ramachandran outliers	187476	5590 (2.80-2.76)
Sidechain outliers	187428	5592 (2.80-2.76)
RSRZ outliers	180081	5251 (2.80-2.76)

The table below summarises the geometric issues observed across the polymeric chains and their fit to the electron density. The red, orange, yellow and green segments of the lower bar indicate the fraction of residues that contain outliers for  $\geq 3$ , 2, 1 and 0 types of geometric quality criteria respectively. A grey segment represents the fraction of residues that are not modelled. The numeric value for each fraction is indicated below the corresponding segment, with a dot representing fractions  $\leq 5\%$ . The upper red bar (where present) indicates the fraction of residues that have poor fit to the electron density. The numeric value is given above the bar.

Mol	Chain	Length	Quality of chain
1	D	546	

Ideal geometry (DNA, RNA) : Parkinson et al. (1996)  
Validation Pipeline (wwPDB-VP) : 2.49

## 2 Entry composition i

There are 4 unique types of molecules in this entry. The entry contains 2650 atoms, of which 0 are hydrogens and 0 are deuteriums.

In the tables below, the ZeroOcc column contains the number of atoms modelled with zero occupancy, the AltConf column contains the number of residues with at least one atom in alternate conformation and the Trace column contains the number of residues modelled with at most 2 atoms.

- Molecule 1 is a protein called Chaperone protein DnaK.

Mol	Chain	Residues	Atoms					ZeroOcc	AltConf	Trace
			Total	C	N	O	S			
1	D	349	2596	1618	451	522	5	0	1	0

There are 32 discrepancies between the modelled and reference sequences:

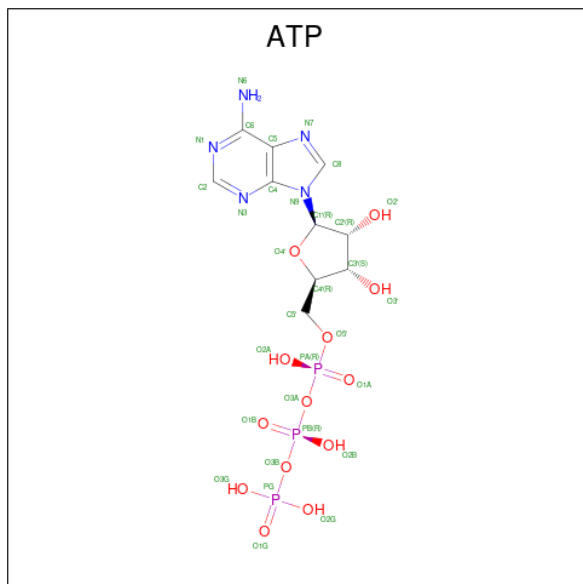
Chain	Residue	Modelled	Actual	Comment	Reference
D	-31	MET	-	expression tag	UNP I6Y7L1
D	-30	HIS	-	expression tag	UNP I6Y7L1
D	-29	HIS	-	expression tag	UNP I6Y7L1
D	-28	HIS	-	expression tag	UNP I6Y7L1
D	-27	HIS	-	expression tag	UNP I6Y7L1
D	-26	HIS	-	expression tag	UNP I6Y7L1
D	-25	HIS	-	expression tag	UNP I6Y7L1
D	-24	SER	-	expression tag	UNP I6Y7L1
D	-23	SER	-	expression tag	UNP I6Y7L1
D	-22	GLY	-	expression tag	UNP I6Y7L1
D	-21	VAL	-	expression tag	UNP I6Y7L1
D	-20	ASP	-	expression tag	UNP I6Y7L1
D	-19	LEU	-	expression tag	UNP I6Y7L1
D	-18	TRP	-	expression tag	UNP I6Y7L1
D	-17	SER	-	expression tag	UNP I6Y7L1
D	-16	HIS	-	expression tag	UNP I6Y7L1
D	-15	PRO	-	expression tag	UNP I6Y7L1
D	-14	GLN	-	expression tag	UNP I6Y7L1
D	-13	PHE	-	expression tag	UNP I6Y7L1
D	-12	GLU	-	expression tag	UNP I6Y7L1
D	-11	LYS	-	expression tag	UNP I6Y7L1
D	-10	GLY	-	expression tag	UNP I6Y7L1
D	-9	THR	-	expression tag	UNP I6Y7L1
D	-8	GLU	-	expression tag	UNP I6Y7L1
D	-7	ASN	-	expression tag	UNP I6Y7L1
D	-6	LEU	-	expression tag	UNP I6Y7L1
D	-5	TYR	-	expression tag	UNP I6Y7L1

*Continued on next page...*

Continued from previous page...

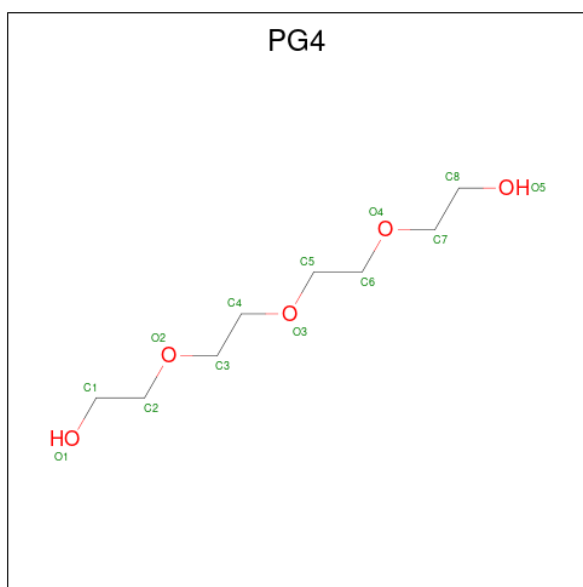
Chain	Residue	Modelled	Actual	Comment	Reference
D	-4	PHE	-	expression tag	UNP I6Y7L1
D	-3	GLN	-	expression tag	UNP I6Y7L1
D	-2	SER	-	expression tag	UNP I6Y7L1
D	-1	ASN	-	expression tag	UNP I6Y7L1
D	0	ALA	-	expression tag	UNP I6Y7L1

- Molecule 2 is ADENOSINE-5'-TRIPHOSPHATE (CCD ID: ATP) (formula: C<sub>10</sub>H<sub>16</sub>N<sub>5</sub>O<sub>13</sub>P<sub>3</sub>).



Mol	Chain	Residues	Atoms			ZeroOcc	AltConf
2	D	1	Total	O	P	0	0
			9	7	2		

- Molecule 3 is TETRAETHYLENE GLYCOL (CCD ID: PG4) (formula: C<sub>8</sub>H<sub>18</sub>O<sub>5</sub>).



Mol	Chain	Residues	Atoms	ZeroOcc	AltConf
3	D	1	Total C O 13 8 5	0	0

- Molecule 4 is water.

Mol	Chain	Residues	Atoms	ZeroOcc	AltConf
4	D	32	Total O 32 32	0	0



## 4 Data and refinement statistics

Property	Value	Source
Space group	P 64 2 2	Depositor
Cell constants a, b, c, $\alpha$ , $\beta$ , $\gamma$	117.87Å 117.87Å 134.94Å 90.00° 90.00° 120.00°	Depositor
Resolution (Å)	30.00 – 2.77 30.00 – 2.77	Depositor EDS
% Data completeness (in resolution range)	99.7 (30.00-2.77) 99.7 (30.00-2.77)	Depositor EDS
$R_{merge}$	0.07	Depositor
$R_{sym}$	(Not available)	Depositor
$\langle I/\sigma(I) \rangle$ <sup>1</sup>	5.77 (at 2.76Å)	Xtrriage
Refinement program	REFMAC 5.8.0069	Depositor
R, $R_{free}$	0.208 , 0.269 (Not available) , 0.266	Depositor DCC
$R_{free}$ test set	724 reflections (4.91%)	wwPDB-VP
Wilson B-factor (Å <sup>2</sup> )	64.7	Xtrriage
Anisotropy	0.256	Xtrriage
Bulk solvent $k_{sol}$ (e/Å <sup>3</sup> ), $B_{sol}$ (Å <sup>2</sup> )	0.28 , 46.7	EDS
L-test for twinning <sup>2</sup>	$\langle  L  \rangle = 0.47$ , $\langle L^2 \rangle = 0.30$	Xtrriage
Estimated twinning fraction	No twinning to report.	Xtrriage
$F_o, F_c$ correlation	0.94	EDS
Total number of atoms	2650	wwPDB-VP
Average B, all atoms (Å <sup>2</sup> )	70.0	wwPDB-VP

Xtrriage's analysis on translational NCS is as follows: *The largest off-origin peak in the Patterson function is 5.42% of the height of the origin peak. No significant pseudotranslation is detected.*

<sup>1</sup>Intensities estimated from amplitudes.

<sup>2</sup>Theoretical values of  $\langle |L| \rangle$ ,  $\langle L^2 \rangle$  for acentric reflections are 0.5, 0.333 respectively for untwinned datasets, and 0.375, 0.2 for perfectly twinned datasets.

## 5 Model quality i

### 5.1 Standard geometry i

Bond lengths and bond angles in the following residue types are not validated in this section: PG4, ATP

The Z score for a bond length (or angle) is the number of standard deviations the observed value is removed from the expected value. A bond length (or angle) with  $|Z| > 5$  is considered an outlier worth inspection. RMSZ is the root-mean-square of all Z scores of the bond lengths (or angles).

Mol	Chain	Bond lengths		Bond angles	
		RMSZ	# Z  >5	RMSZ	# Z  >5
1	D	0.87	0/2626	1.36	32/3558 (0.9%)

There are no bond length outliers.

All (32) bond angle outliers are listed below:

Mol	Chain	Res	Type	Atoms	Z	Observed(°)	Ideal(°)
1	D	356	LEU	N-CA-C	9.02	125.03	111.04
1	D	23	ASP	N-CA-C	8.27	122.97	109.15
1	D	188	VAL	N-CA-C	8.27	119.87	106.72
1	D	118	THR	CA-C-N	-7.94	111.83	119.85
1	D	118	THR	C-N-CA	-7.94	111.83	119.85
1	D	356	LEU	CB-CA-C	-7.54	99.39	111.39
1	D	274	THR	CB-CA-C	-7.28	97.23	109.53
1	D	341	PRO	CA-C-N	-7.11	111.21	122.79
1	D	341	PRO	C-N-CA	-7.11	111.21	122.79
1	D	84	LYS	N-CA-C	7.00	120.91	109.85
1	D	343	GLU	N-CA-C	-7.00	104.24	114.39
1	D	21	GLY	N-CA-C	-6.47	100.02	111.80
1	D	175	THR	CB-CA-C	-6.27	96.98	110.45
1	D	82	ASP	N-CA-C	-6.26	97.47	110.80
1	D	191	ARG	N-CA-C	6.24	119.02	111.40
1	D	303	SER	N-CA-C	-6.24	100.40	110.32
1	D	307	ILE	CB-CA-C	-6.09	103.95	111.08
1	D	7	ILE	N-CA-C	6.00	116.77	108.12
1	D	249	GLN	N-CA-C	-5.91	105.65	112.92
1	D	142	LEU	N-CA-C	5.88	123.33	110.80
1	D	344	VAL	N-CA-C	5.81	117.25	110.62
1	D	20	GLU	N-CA-C	-5.78	98.07	108.48
1	D	277	GLU	N-CA-C	-5.72	104.95	111.07
1	D	111	ILE	CB-CA-C	-5.70	101.57	110.69

*Continued on next page...*

Continued from previous page...

Mol	Chain	Res	Type	Atoms	Z	Observed(°)	Ideal(°)
1	D	73	MET	N-CA-C	5.68	122.90	110.80
1	D	348	GLY	N-CA-C	-5.54	106.08	112.73
1	D	63	ASP	N-CA-C	5.54	119.13	112.38
1	D	133	ALA	N-CA-C	-5.54	105.40	111.82
1	D	317	THR	N-CA-C	-5.48	106.55	113.18
1	D	145	VAL	N-CA-C	5.42	117.59	109.20
1	D	187	VAL	N-CA-C	5.31	117.34	109.17
1	D	157	LEU	N-CA-CB	5.20	116.18	110.35

There are no chirality outliers.

There are no planarity outliers.

## 5.2 Too-close contacts [i](#)

In the following table, the Non-H and H(model) columns list the number of non-hydrogen atoms and hydrogen atoms in the chain respectively. The H(added) column lists the number of hydrogen atoms added and optimized by MolProbity. The Clashes column lists the number of clashes within the asymmetric unit, whereas Symm-Clashes lists symmetry-related clashes.

Mol	Chain	Non-H	H(model)	H(added)	Clashes	Symm-Clashes
1	D	2596	0	2527	89	0
2	D	9	0	0	0	0
3	D	13	0	18	0	0
4	D	32	0	0	2	0
All	All	2650	0	2545	89	0

The all-atom clashscore is defined as the number of clashes found per 1000 atoms (including hydrogen atoms). The all-atom clashscore for this structure is 17.

All (89) close contacts within the same asymmetric unit are listed below, sorted by their clash magnitude.

Atom-1	Atom-2	Interatomic distance (Å)	Clash overlap (Å)
1:D:167:LEU:HB3	1:D:310:VAL:HG12	1.42	1.02
1:D:312:LEU:HB3	1:D:317:THR:HG21	1.51	0.91
1:D:304:VAL:O	1:D:307:ILE:HG12	1.75	0.86
1:D:269:LEU:HD12	1:D:270:ASP:N	1.97	0.80
1:D:117:THR:HA	1:D:145:VAL:O	1.82	0.78
1:D:274:THR:HG22	1:D:276:ALA:H	1.48	0.78
1:D:113:ASP:HB2	1:D:142:LEU:HD21	1.65	0.78
1:D:317:THR:HA	1:D:322:VAL:HG21	1.69	0.74

Continued on next page...

*Continued from previous page...*

Atom-1	Atom-2	Interatomic distance (Å)	Clash overlap (Å)
1:D:260:VAL:HA	1:D:265:ASN:O	1.90	0.71
1:D:116:ILE:O	1:D:144:ILE:HG13	1.91	0.71
1:D:143:ARG:CG	1:D:144:ILE:H	2.06	0.69
1:D:261:ASP:OD1	1:D:265:ASN:HB2	1.93	0.68
1:D:274:THR:HG22	1:D:276:ALA:N	2.08	0.68
1:D:341:PRO:HA	1:D:344:VAL:CG2	2.24	0.68
1:D:80:GLU:OE2	1:D:80:GLU:HA	1.95	0.67
1:D:163:GLU:HA	1:D:183:ILE:O	1.92	0.67
1:D:204:TRP:CD1	1:D:282:THR:HG21	2.30	0.67
1:D:312:LEU:HD13	1:D:317:THR:CG2	2.25	0.65
1:D:288:ARG:HH21	1:D:288:ARG:HG2	1.62	0.65
1:D:286:LEU:O	1:D:289:THR:HB	1.98	0.63
1:D:312:LEU:CB	1:D:317:THR:HG21	2.28	0.62
1:D:158:ASP:HB2	4:D:731:HOH:O	1.99	0.62
1:D:342:ASP:OD1	1:D:342:ASP:C	2.41	0.62
1:D:101:ARG:HD2	1:D:101:ARG:C	2.26	0.60
1:D:311:VAL:HA	4:D:728:HOH:O	2.02	0.60
1:D:269:LEU:HD12	1:D:269:LEU:C	2.25	0.59
1:D:225:THR:HA	1:D:231:MET:HE3	1.87	0.57
1:D:234:LEU:HD11	1:D:258:ILE:HD11	1.85	0.57
1:D:143:ARG:CG	1:D:144:ILE:N	2.68	0.56
1:D:29:ASN:HD21	1:D:33:SER:HB3	1.71	0.54
1:D:132:ASP:O	1:D:136:ILE:HG13	2.07	0.54
1:D:204:TRP:CD1	1:D:282:THR:CG2	2.90	0.54
1:D:274:THR:HG22	1:D:275:ARG:N	2.23	0.53
1:D:316:SER:HB2	1:D:319:MET:HE2	1.91	0.53
1:D:118:THR:O	1:D:146:ASN:HA	2.10	0.52
1:D:16:VAL:HG12	1:D:99:LEU:HD22	1.93	0.51
1:D:213:VAL:CG2	1:D:231:MET:HE1	2.40	0.51
1:D:166:ILE:N	1:D:166:ILE:HD12	2.26	0.51
1:D:42:PHE:O	1:D:64:ARG:HD3	2.10	0.51
1:D:144:ILE:HG23	1:D:144:ILE:O	2.12	0.50
1:D:225:THR:N	1:D:231:MET:HE3	2.26	0.50
1:D:143:ARG:HG2	1:D:144:ILE:H	1.75	0.50
1:D:81:ILE:O	1:D:82:ASP:C	2.53	0.50
1:D:159:LYS:O	1:D:162:LYS:CA	2.60	0.50
1:D:143:ARG:HG3	1:D:144:ILE:H	1.78	0.49
1:D:254:ASN:OD1	1:D:270:ASP:OD1	2.32	0.48
1:D:315:GLY:O	1:D:318:ARG:HB2	2.13	0.47
1:D:101:ARG:HD2	1:D:102:ASP:N	2.29	0.47
1:D:98:LYS:HG3	1:D:101:ARG:CZ	2.45	0.47

*Continued on next page...*

Continued from previous page...

Atom-1	Atom-2	Interatomic distance (Å)	Clash overlap (Å)
1:D:149:THR:O	1:D:150:ALA:C	2.58	0.47
1:D:257[A]:TYR:CD1	1:D:266:PRO:HB2	2.50	0.46
1:D:143:ARG:HG2	1:D:144:ILE:N	2.31	0.46
1:D:180:LEU:HA	1:D:180:LEU:HD12	1.75	0.46
1:D:288:ARG:HG2	1:D:288:ARG:NH2	2.29	0.45
1:D:213:VAL:HG22	1:D:231:MET:HE1	1.99	0.45
1:D:204:TRP:NE1	1:D:282:THR:CG2	2.79	0.45
1:D:234:LEU:CD1	1:D:258:ILE:HD11	2.47	0.45
1:D:259:THR:HB	1:D:260:VAL:H	1.70	0.44
1:D:342:ASP:OD1	1:D:342:ASP:O	2.35	0.44
1:D:48:VAL:HG11	1:D:94:ARG:HD3	2.00	0.44
1:D:187:VAL:HG12	1:D:188:VAL:N	2.32	0.44
1:D:224:LEU:C	1:D:231:MET:HE3	2.42	0.44
1:D:64:ARG:HH22	1:D:82:ASP:CG	2.26	0.44
1:D:167:LEU:CD2	1:D:293:PHE:HE2	2.31	0.44
1:D:300:THR:HG22	1:D:302:ILE:HD13	2.00	0.44
1:D:43:ALA:HB3	1:D:45:ASN:OD1	2.17	0.43
1:D:259:THR:O	1:D:266:PRO:HA	2.18	0.43
1:D:322:VAL:O	1:D:326:VAL:HG23	2.19	0.43
1:D:100:LYS:HE3	1:D:111:ILE:O	2.19	0.43
1:D:255:LEU:HA	1:D:256:PRO:HD3	1.89	0.43
1:D:256:PRO:O	1:D:257[B]:TYR:C	2.62	0.43
1:D:8:ASP:CG	1:D:345:VAL:HG22	2.43	0.43
1:D:163:GLU:HG2	1:D:164:GLN:N	2.34	0.42
1:D:225:THR:CA	1:D:231:MET:HE3	2.49	0.42
1:D:204:TRP:NE1	1:D:282:THR:HG23	2.34	0.42
1:D:107:LEU:C	1:D:109:GLU:H	2.28	0.42
1:D:163:GLU:CG	1:D:164:GLN:N	2.83	0.42
1:D:287:ASP:C	1:D:289:THR:H	2.26	0.42
1:D:341:PRO:C	1:D:344:VAL:HG23	2.45	0.42
1:D:107:LEU:HB3	1:D:109:GLU:HG2	2.02	0.42
1:D:167:LEU:HD21	1:D:293:PHE:HE2	1.86	0.41
1:D:155:TYR:O	1:D:156:GLY:C	2.64	0.41
1:D:252:SER:OG	1:D:272:GLN:HG2	2.21	0.41
1:D:269:LEU:C	1:D:269:LEU:CD1	2.94	0.40
1:D:27:VAL:HG11	1:D:103:ALA:HA	2.03	0.40
1:D:315:GLY:N	1:D:342:ASP:HB3	2.36	0.40
1:D:287:ASP:C	1:D:289:THR:N	2.79	0.40
1:D:163:GLU:O	1:D:164:GLN:HG2	2.22	0.40
1:D:274:THR:O	1:D:275:ARG:C	2.65	0.40

There are no symmetry-related clashes.

## 5.3 Torsion angles [i](#)

### 5.3.1 Protein backbone [i](#)

In the following table, the Percentiles column shows the percent Ramachandran outliers of the chain as a percentile score with respect to all X-ray entries followed by that with respect to entries of similar resolution.

The Analysed column shows the number of residues for which the backbone conformation was analysed, and the total number of residues.

Mol	Chain	Analysed	Favoured	Allowed	Outliers	Percentiles
1	D	342/546 (63%)	318 (93%)	21 (6%)	3 (1%)	14 37

All (3) Ramachandran outliers are listed below:

Mol	Chain	Res	Type
1	D	45	ASN
1	D	144	ILE
1	D	260	VAL

### 5.3.2 Protein sidechains [i](#)

In the following table, the Percentiles column shows the percent sidechain outliers of the chain as a percentile score with respect to all X-ray entries followed by that with respect to entries of similar resolution.

The Analysed column shows the number of residues for which the sidechain conformation was analysed, and the total number of residues.

Mol	Chain	Analysed	Rotameric	Outliers	Percentiles
1	D	268/453 (59%)	248 (92%)	20 (8%)	12 34

All (20) residues with a non-rotameric sidechain are listed below:

Mol	Chain	Res	Type
1	D	5	VAL
1	D	15	VAL
1	D	101	ARG
1	D	118	THR
1	D	153	LEU
1	D	178	VAL
1	D	193	THR
1	D	225	THR

*Continued on next page...*

*Continued from previous page...*

Mol	Chain	Res	Type
1	D	269	LEU
1	D	282	THR
1	D	288	ARG
1	D	289	THR
1	D	296	VAL
1	D	302	ILE
1	D	311	VAL
1	D	322	VAL
1	D	323	THR
1	D	337	LYS
1	D	344	VAL
1	D	345	VAL

Sometimes sidechains can be flipped to improve hydrogen bonding and reduce clashes. All (4) such sidechains are listed below:

Mol	Chain	Res	Type
1	D	13	ASN
1	D	72	HIS
1	D	126	GLN
1	D	128	GLN

### 5.3.3 RNA [i](#)

There are no RNA molecules in this entry.

## 5.4 Non-standard residues in protein, DNA, RNA chains [i](#)

There are no non-standard protein/DNA/RNA residues in this entry.

## 5.5 Carbohydrates [i](#)

There are no oligosaccharides in this entry.

## 5.6 Ligand geometry [i](#)

2 ligands are modelled in this entry.

In the following table, the Counts columns list the number of bonds (or angles) for which Mogul statistics could be retrieved, the number of bonds (or angles) that are observed in the model and

the number of bonds (or angles) that are defined in the Chemical Component Dictionary. The Link column lists molecule types, if any, to which the group is linked. The Z score for a bond length (or angle) is the number of standard deviations the observed value is removed from the expected value. A bond length (or angle) with  $|Z| > 2$  is considered an outlier worth inspection. RMSZ is the root-mean-square of all Z scores of the bond lengths (or angles).

Mol	Type	Chain	Res	Link	Bond lengths			Bond angles		
					Counts	RMSZ	$\# Z  > 2$	Counts	RMSZ	$\# Z  > 2$
2	ATP	D	601	-	6,8,33	1.01	0	12,13,52	1.38	1 (8%)
3	PG4	D	602	-	12,12,12	0.51	0	11,11,11	0.29	0

In the following table, the Chirals column lists the number of chiral outliers, the number of chiral centers analysed, the number of these observed in the model and the number defined in the Chemical Component Dictionary. Similar counts are reported in the Torsion and Rings columns. '-' means no outliers of that kind were identified.

Mol	Type	Chain	Res	Link	Chirals	Torsions	Rings
2	ATP	D	601	-	-	0/6/6/38	-
3	PG4	D	602	-	-	8/10/10/10	-

There are no bond length outliers.

All (1) bond angle outliers are listed below:

Mol	Chain	Res	Type	Atoms	Z	Observed( $^{\circ}$ )	Ideal( $^{\circ}$ )
2	D	601	ATP	O3A-PB-O2B	-2.65	97.87	107.80

There are no chirality outliers.

All (8) torsion outliers are listed below:

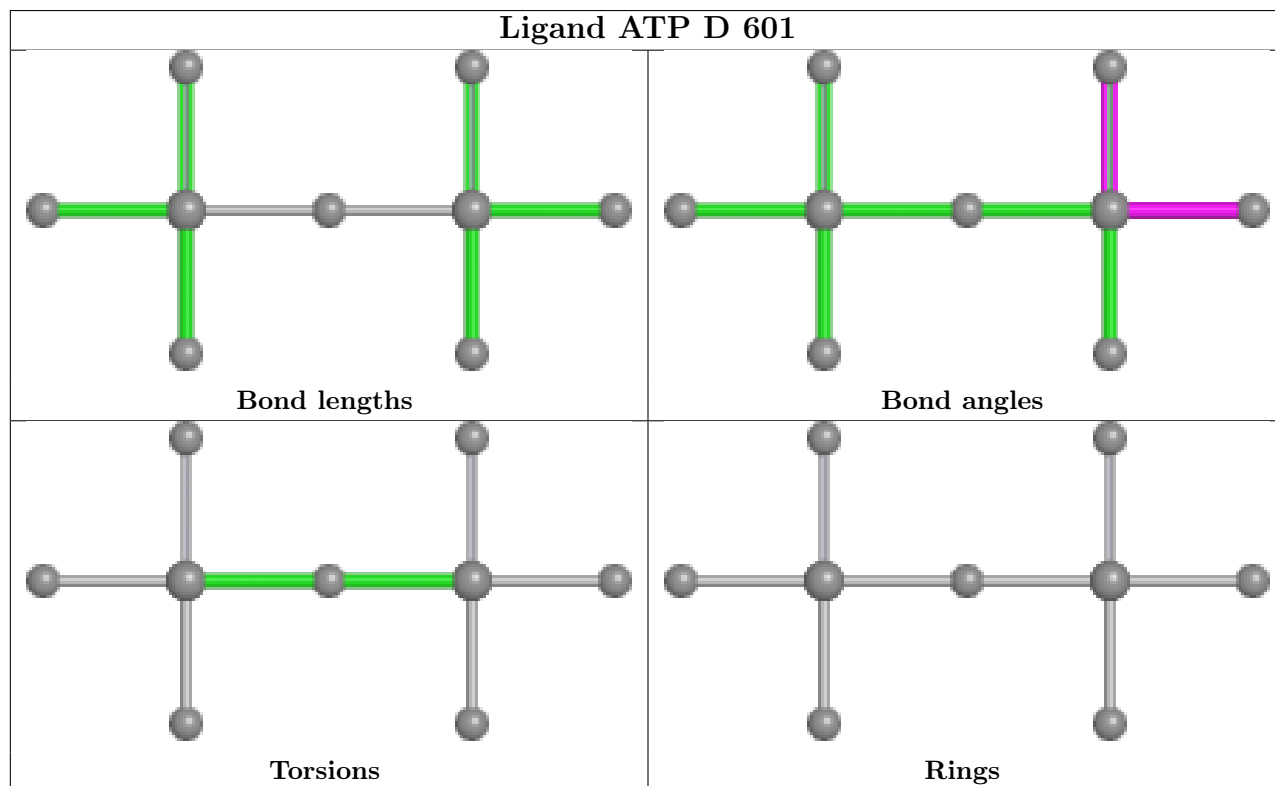
Mol	Chain	Res	Type	Atoms
3	D	602	PG4	O2-C3-C4-O3
3	D	602	PG4	O4-C7-C8-O5
3	D	602	PG4	O1-C1-C2-O2
3	D	602	PG4	O3-C5-C6-O4
3	D	602	PG4	C3-C4-O3-C5
3	D	602	PG4	C4-C3-O2-C2
3	D	602	PG4	C5-C6-O4-C7
3	D	602	PG4	C1-C2-O2-C3

There are no ring outliers.

No monomer is involved in short contacts.

The following is a two-dimensional graphical depiction of Mogul quality analysis of bond lengths,

bond angles, torsion angles, and ring geometry for all instances of the Ligand of Interest. In addition, ligands with molecular weight > 250 and outliers as shown on the validation Tables will also be included. For torsion angles, if less than 5% of the Mogul distribution of torsion angles is within 10 degrees of the torsion angle in question, then that torsion angle is considered an outlier. Any bond that is central to one or more torsion angles identified as an outlier by Mogul will be highlighted in the graph. For rings, the root-mean-square deviation (RMSD) between the ring in question and similar rings identified by Mogul is calculated over all ring torsion angles. If the average RMSD is greater than 60 degrees and the minimal RMSD between the ring in question and any Mogul-identified rings is also greater than 60 degrees, then that ring is considered an outlier. The outliers are highlighted in purple. The color gray indicates Mogul did not find sufficient equivalents in the CSD to analyse the geometry.



## 5.7 Other polymers [i](#)

There are no such residues in this entry.

## 5.8 Polymer linkage issues [i](#)

There are no chain breaks in this entry.

## 6 Fit of model and data [i](#)

### 6.1 Protein, DNA and RNA chains [i](#)

In the following table, the column labelled ‘#RSRZ> 2’ contains the number (and percentage) of RSRZ outliers, followed by percent RSRZ outliers for the chain as percentile scores relative to all X-ray entries and entries of similar resolution. The OWAB column contains the minimum, median, 95<sup>th</sup> percentile and maximum values of the occupancy-weighted average B-factor per residue. The column labelled ‘Q< 0.9’ lists the number of (and percentage) of residues with an average occupancy less than 0.9.

Mol	Chain	Analysed	<RSRZ>	#RSRZ>2	OWAB(Å <sup>2</sup> )	Q<0.9
1	D	349/546 (63%)	-0.07	5 (1%) 73 67	38, 69, 105, 129	1 (0%)

All (5) RSRZ outliers are listed below:

Mol	Chain	Res	Type	RSRZ
1	D	257[A]	TYR	5.8
1	D	261	ASP	2.9
1	D	186	GLY	2.4
1	D	310	VAL	2.2
1	D	281	ILE	2.1

### 6.2 Non-standard residues in protein, DNA, RNA chains [i](#)

There are no non-standard protein/DNA/RNA residues in this entry.

### 6.3 Carbohydrates [i](#)

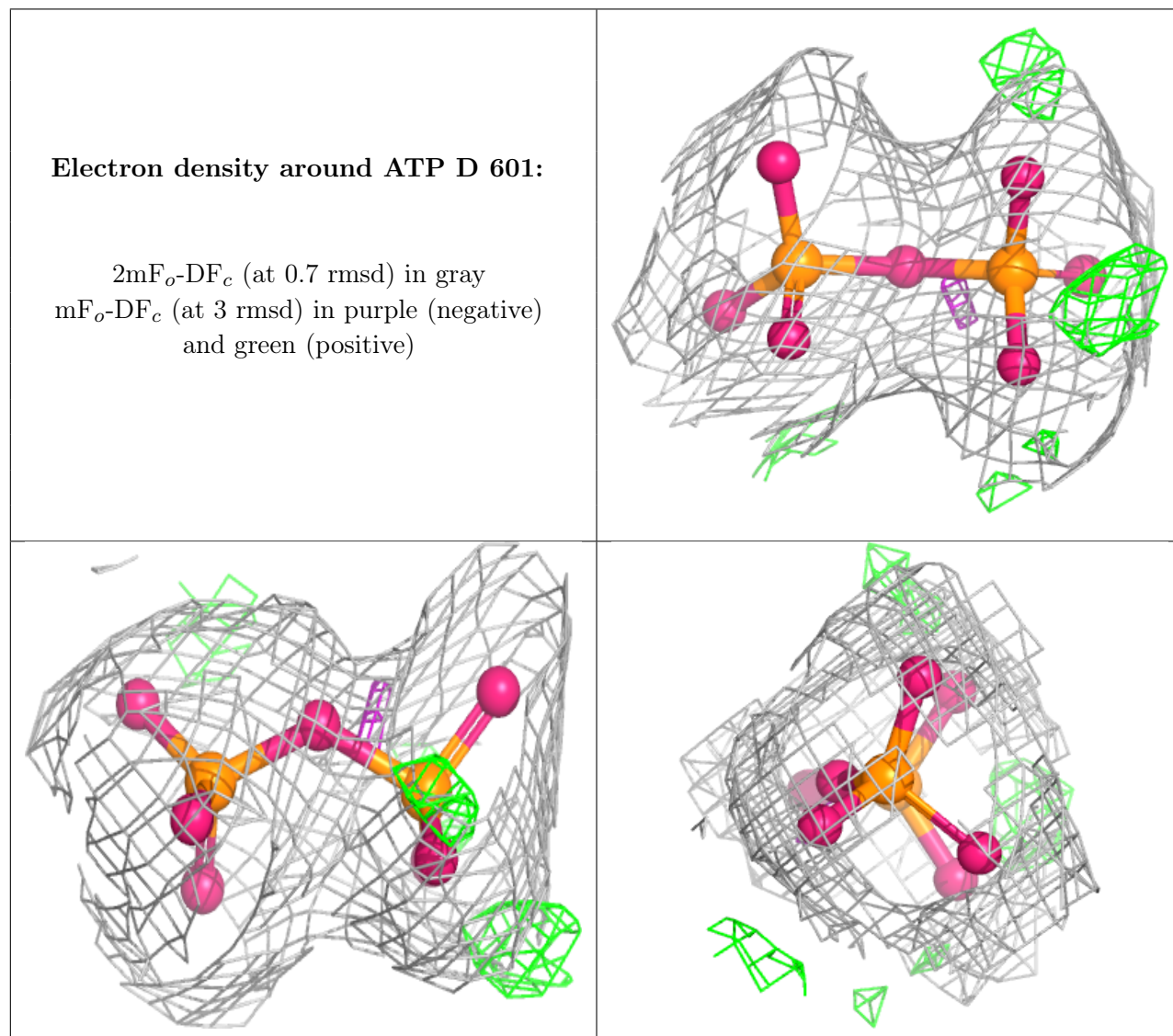
There are no oligosaccharides in this entry.

### 6.4 Ligands [i](#)

In the following table, the Atoms column lists the number of modelled atoms in the group and the number defined in the chemical component dictionary. The B-factors column lists the minimum, median, 95<sup>th</sup> percentile and maximum values of B factors of atoms in the group. The column labelled ‘Q< 0.9’ lists the number of atoms with occupancy less than 0.9.

Mol	Type	Chain	Res	Atoms	RSCC	RSR	B-factors(Å <sup>2</sup> )	Q<0.9
3	PG4	D	602	13/13	0.94	0.13	48,59,64,68	13
2	ATP	D	601	9/31	0.95	0.09	34,58,63,105	0

The following is a graphical depiction of the model fit to experimental electron density of all instances of the Ligand of Interest. In addition, ligands with molecular weight > 250 and outliers as shown on the geometry validation Tables will also be included. Each fit is shown from different orientation to approximate a three-dimensional view.



## 6.5 Other polymers [i](#)

There are no such residues in this entry.