



Full wwPDB NMR Structure Validation Report ⓘ

Mar 5, 2026 – 12:45 PM UTC

PDB ID : 2RTX / pdb_00002rtx
BMRB ID : 11534
Title : Solution structure of the GGQ domain of YaeJ protein from Escherichia coli
Authors : Nameki, N.; Enomoto, M.; Kogure, H.; Tochio, N.; Guntert, P.
Deposited on : 2013-09-21

This is a Full wwPDB NMR Structure Validation Report for a publicly released PDB entry.

We welcome your comments at validation@mail.wwpdb.org

A user guide is available at

<https://www.wwpdb.org/validation/2017/NMRValidationReportHelp>

with specific help available everywhere you see the ⓘ symbol.

The types of validation reports are described at

<http://www.wwpdb.org/validation/2017/FAQs#types>.

The following versions of software and data (see [references ⓘ](#)) were used in the production of this report:

MolProbity : 4-5-2 with Phenix2.0
Percentile statistics : 20250101.v01 (using entries in the PDB archive January 1st 2025)
wwPDB-RCI : v_1n_11_5_13_A (Berjanski et al., 2005)
PANAV : Wang et al. (2010)
wwPDB-ShiftChecker : v1.2
BMRB Restraints Analysis : v1.2
Ideal geometry (proteins) : Engh & Huber (2001)
Ideal geometry (DNA, RNA) : Parkinson et al. (1996)
Validation Pipeline (wwPDB-VP) : 2.49

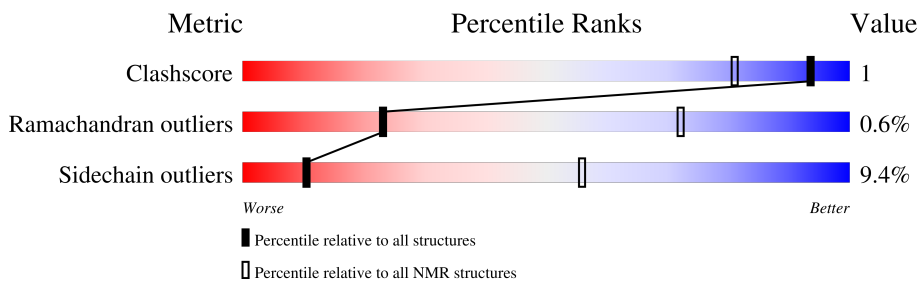
1 Overall quality at a glance

The following experimental techniques were used to determine the structure:

SOLUTION NMR

The overall completeness of chemical shifts assignment is 92%.

Percentile scores (ranging between 0-100) for global validation metrics of the entry are shown in the following graphic. The table shows the number of entries on which the scores are based.



Metric	Whole archive (#Entries)	NMR archive (#Entries)
Clashscore	229148	14424
Ramachandran outliers	224038	12848
Sidechain outliers	223484	12823

The table below summarises the geometric issues observed across the polymeric chains and their fit to the experimental data. The red, orange, yellow and green segments indicate the fraction of residues that contain outliers for ≥ 3 , 2, 1 and 0 types of geometric quality criteria. A cyan segment indicates the fraction of residues that are not part of the well-defined cores, and a grey segment represents the fraction of residues that are not modelled. The numeric value for each fraction is indicated below the corresponding segment, with a dot representing fractions $\leq 5\%$

Mol	Chain	Length	Quality of chain
1	A	121	

2 Ensemble composition and analysis

This entry contains 20 models. Model 1 is the overall representative, medoid model (most similar to other models).

The following residues are included in the computation of the global validation metrics.

Well-defined (core) protein residues			
Well-defined core	Residue range (total)	Backbone RMSD (Å)	Medoid model
1	A:1-A:20, A:35-A:99 (85)	0.42	1

Ill-defined regions of proteins are excluded from the global statistics.

Ligands and non-protein polymers are included in the analysis.

The models can be grouped into 4 clusters and 7 single-model clusters were found.

Cluster number	Models
1	4, 7, 8, 12
2	1, 9, 16, 19
3	2, 6, 15
4	5, 20
Single-model clusters	3; 10; 11; 13; 14; 17; 18

3 Entry composition

There is only 1 type of molecule in this entry. The entry contains 1916 atoms, of which 970 are hydrogens and 0 are deuteriums.

- Molecule 1 is a protein called Peptidyl-tRNA hydrolase YaeJ.

Mol	Chain	Residues	Atoms						Trace
			Total	C	H	N	O	S	
1	A	121	1916	590	970	178	176	2	0

There are 12 discrepancies between the modelled and reference sequences:

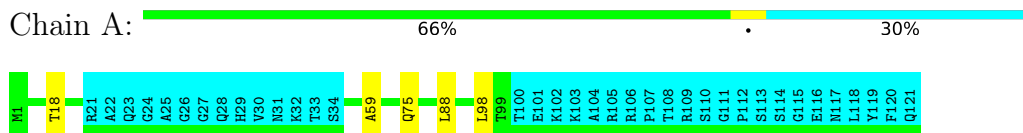
Chain	Residue	Modelled	Actual	Comment	Reference
A	110	SER	-	expression tag	UNP P40711
A	111	GLY	-	expression tag	UNP P40711
A	112	PRO	-	expression tag	UNP P40711
A	113	SER	-	expression tag	UNP P40711
A	114	SER	-	expression tag	UNP P40711
A	115	GLY	-	expression tag	UNP P40711
A	116	GLU	-	expression tag	UNP P40711
A	117	ASN	-	expression tag	UNP P40711
A	118	LEU	-	expression tag	UNP P40711
A	119	TYR	-	expression tag	UNP P40711
A	120	PHE	-	expression tag	UNP P40711
A	121	GLN	-	expression tag	UNP P40711

4 Residue-property plots

4.1 Average score per residue in the NMR ensemble

These plots are provided for all protein, RNA, DNA and oligosaccharide chains in the entry. The first graphic is the same as shown in the summary in section 1 of this report. The second graphic shows the sequence where residues are colour-coded according to the number of geometric quality criteria for which they contain at least one outlier: green = 0, yellow = 1, orange = 2 and red = 3 or more. Stretches of 2 or more consecutive residues without any outliers are shown as green connectors. Residues which are classified as ill-defined in the NMR ensemble, are shown in cyan with an underline colour-coded according to the previous scheme. Residues which were present in the experimental sample, but not modelled in the final structure are shown in grey.

- Molecule 1: Peptidyl-tRNA hydrolase YaeJ

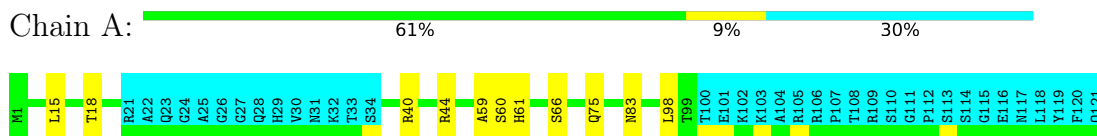


4.2 Scores per residue for each member of the ensemble

Colouring as in section 4.1 above.

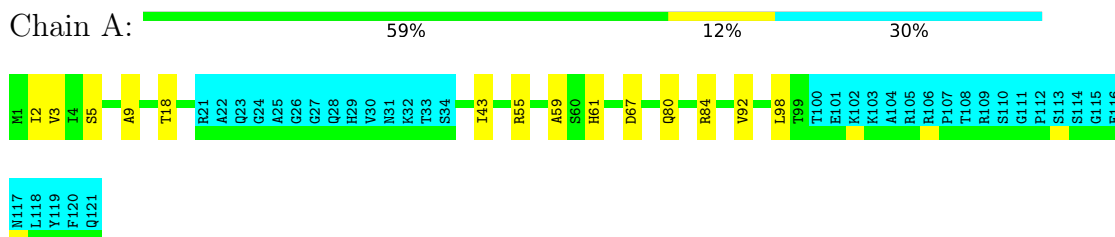
4.2.1 Score per residue for model 1 (medoid)

- Molecule 1: Peptidyl-tRNA hydrolase YaeJ



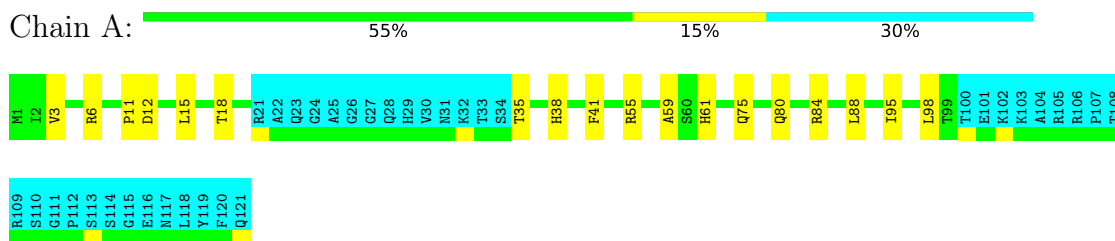
4.2.2 Score per residue for model 2

- Molecule 1: Peptidyl-tRNA hydrolase YaeJ



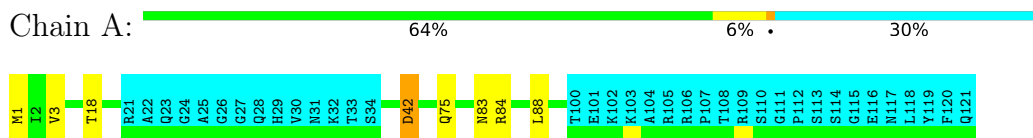
4.2.3 Score per residue for model 3

- Molecule 1: Peptidyl-tRNA hydrolase YaeJ



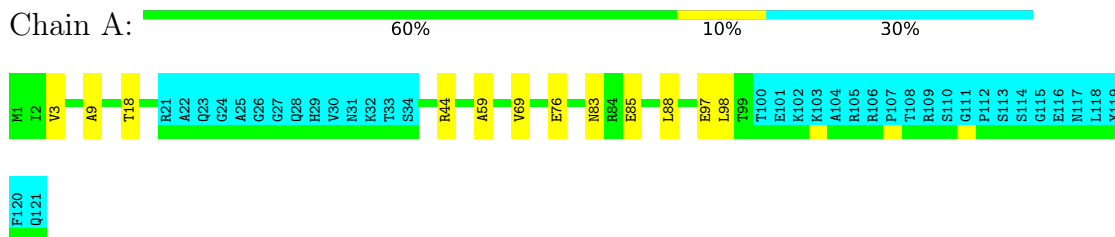
4.2.4 Score per residue for model 4

- Molecule 1: Peptidyl-tRNA hydrolase YaeJ



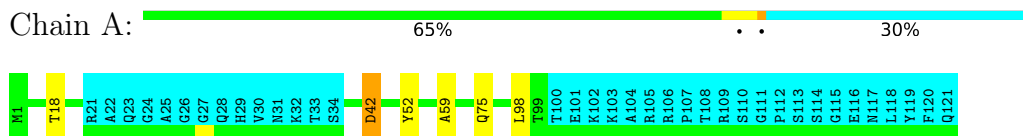
4.2.5 Score per residue for model 5

- Molecule 1: Peptidyl-tRNA hydrolase YaeJ



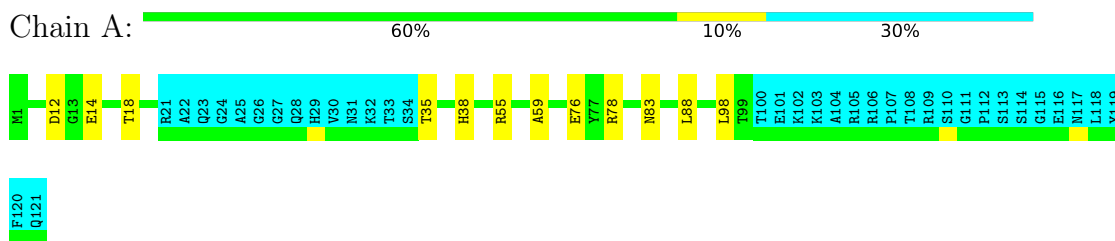
4.2.6 Score per residue for model 6

- Molecule 1: Peptidyl-tRNA hydrolase YaeJ



4.2.7 Score per residue for model 7

- Molecule 1: Peptidyl-tRNA hydrolase YaeJ



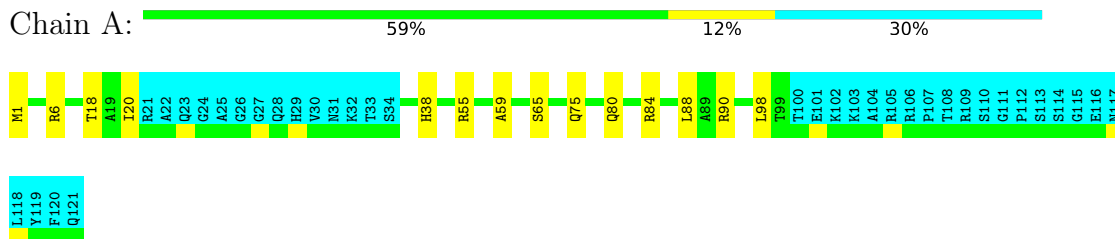
4.2.8 Score per residue for model 8

- Molecule 1: Peptidyl-tRNA hydrolase YaeJ



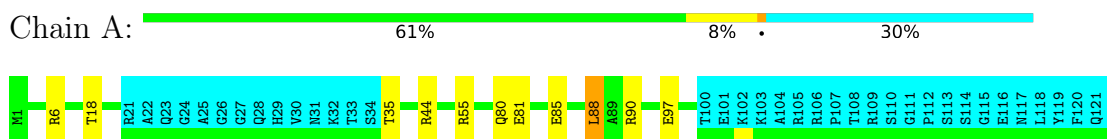
4.2.9 Score per residue for model 9

- Molecule 1: Peptidyl-tRNA hydrolase YaeJ



4.2.10 Score per residue for model 10

- Molecule 1: Peptidyl-tRNA hydrolase YaeJ





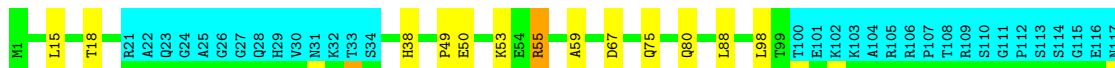
4.2.16 Score per residue for model 16

- Molecule 1: Peptidyl-tRNA hydrolase YaeJ



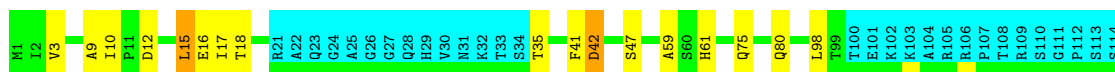
4.2.17 Score per residue for model 17

- Molecule 1: Peptidyl-tRNA hydrolase YaeJ



4.2.18 Score per residue for model 18

- Molecule 1: Peptidyl-tRNA hydrolase YaeJ



4.2.19 Score per residue for model 19

- Molecule 1: Peptidyl-tRNA hydrolase YaeJ



L118
Y119
F120
Q121

4.2.20 Score per residue for model 20

- Molecule 1: Peptidyl-tRNA hydrolase YaeJ

Chain A:  60% 10% 30%

M1 I2 R6 D12 T18 R21 A22 Q23 C24 A25 G26 G27 Q28 H29 V30 N31 K32 T33 S34 R40 A59 Q75 R78 R84 L88 V92 L98 T99 T100 E101 K102 K103 A104 R105 R106 P107 T108 R109 S110 G111 P112 S113 S114 G115 E116 M117 L118 Y119

F120
Q121

5 Refinement protocol and experimental data overview

The models were refined using the following method: *restrained energy minimization*.

Of the 100 calculated structures, 20 were deposited, based on the following criterion: *target function*.

The following table shows the software used for structure solution, optimisation and refinement.

Software name	Classification	Version
CYANA	structure solution	3.93
OPALp	refinement	1.4

The following table shows chemical shift validation statistics as aggregates over all chemical shift files. Detailed validation can be found in section 7 of this report.

Chemical shift file(s)	working_cs.cif
Number of chemical shift lists	1
Total number of shifts	1523
Number of shifts mapped to atoms	1523
Number of unparsed shifts	0
Number of shifts with mapping errors	0
Number of shifts with mapping warnings	0
Assignment completeness (well-defined parts)	92%

6 Model quality i

6.1 Standard geometry i

The Z score for a bond length (or angle) is the number of standard deviations the observed value is removed from the expected value. A bond length (or angle) with $|Z| > 5$ is considered an outlier worth inspection. RMSZ is the (average) root-mean-square of all Z scores of the bond lengths (or angles).

Mol	Chain	Bond lengths		Bond angles	
		RMSZ	#Z>5	RMSZ	#Z>5
1	A	0.66±0.01	0±0/682 (0.0± 0.0%)	1.34±0.03	2±1/923 (0.2± 0.1%)
All	All	0.66	0/13640 (0.0%)	1.34	31/18460 (0.2%)

Chiral center outliers are detected by calculating the chiral volume of a chiral center and verifying if the center is modelled as a planar moiety or with the opposite hand. A planarity outlier is detected by checking planarity of atoms in a peptide group, atoms in a mainchain group or atoms of a sidechain that are expected to be planar.

Mol	Chain	Chirality	Planarity
1	A	0.0±0.0	0.8±0.9
All	All	0	15

There are no bond-length outliers.

All unique angle outliers are listed below. They are sorted according to the Z-score of the worst occurrence in the ensemble.

Mol	Chain	Res	Type	Atoms	Z	Observed(°)	Ideal(°)	Models	
								Worst	Total
1	A	42	ASP	CA-CB-CG	8.00	120.60	112.60	15	4
1	A	49	PRO	CA-C-N	6.05	128.39	120.28	17	1
1	A	49	PRO	C-N-CA	6.05	128.39	120.28	17	1
1	A	38	HIS	CB-CG-CD2	-5.93	123.49	131.20	7	7
1	A	83	ASN	OD1-CG-ND2	-5.91	116.69	122.60	12	2
1	A	61	HIS	CB-CG-CD2	-5.62	123.90	131.20	12	6
1	A	66	SER	CA-C-N	5.52	127.68	120.28	1	1
1	A	66	SER	C-N-CA	5.52	127.68	120.28	1	1
1	A	11	PRO	CA-C-N	5.42	131.90	121.54	3	1
1	A	11	PRO	C-N-CA	5.42	131.90	121.54	3	1
1	A	8	VAL	N-CA-CB	-5.37	105.22	112.10	16	1
1	A	7	HIS	CB-CG-CD2	-5.35	124.24	131.20	19	1
1	A	5	SER	CA-C-N	5.30	127.65	120.38	13	1
1	A	5	SER	C-N-CA	5.30	127.65	120.38	13	1
1	A	17	ILE	CB-CA-C	5.22	118.35	110.98	8	1

Continued on next page...

Continued from previous page...

Mol	Chain	Res	Type	Atoms	Z	Observed(°)	Ideal(°)	Models	
								Worst	Total
1	A	18	THR	CA-CB-OG1	5.11	117.26	109.60	14	1

There are no chirality outliers.

All unique planar outliers are listed below. They are sorted by the frequency of occurrence in the ensemble.

Mol	Chain	Res	Type	Group	Models (Total)
1	A	40	ARG	Sidechain	4
1	A	90	ARG	Sidechain	3
1	A	44	ARG	Sidechain	2
1	A	6	ARG	Sidechain	2
1	A	84	ARG	Sidechain	1
1	A	52	TYR	Sidechain	1
1	A	55	ARG	Sidechain	1
1	A	78	ARG	Sidechain	1

6.2 Too-close contacts [i](#)

In the following table, the Non-H and H(model) columns list the number of non-hydrogen atoms and hydrogen atoms in each chain respectively. The H(added) column lists the number of hydrogen atoms added and optimized by MolProbity. The Clashes column lists the number of clashes averaged over the ensemble.

Mol	Chain	Non-H	H(model)	H(added)	Clashes
1	A	672	701	703	2±1
All	All	13440	14020	14060	36

The all-atom clashscore is defined as the number of clashes found per 1000 atoms (including hydrogen atoms). The all-atom clashscore for this structure is 1.

All unique clashes are listed below, sorted by their clash magnitude.

Atom-1	Atom-2	Clash(Å)	Distance(Å)	Models	
				Worst	Total
1:A:59:ALA:HB1	1:A:98:LEU:HD22	0.68	1.65	16	17
1:A:2:ILE:HG23	1:A:92:VAL:HG22	0.60	1.71	20	5
1:A:3:VAL:HG22	1:A:9:ALA:HB1	0.51	1.83	18	2
1:A:85:GLU:HA	1:A:88:LEU:HD23	0.49	1.85	10	3
1:A:3:VAL:HG22	1:A:9:ALA:CB	0.48	2.39	18	4
1:A:2:ILE:HG23	1:A:92:VAL:CG2	0.46	2.41	14	1
1:A:15:LEU:HD12	1:A:15:LEU:N	0.42	2.30	18	2

Continued on next page...

Continued from previous page...

Atom-1	Atom-2	Clash(Å)	Distance(Å)	Models	
				Worst	Total
1:A:15:LEU:CD2	1:A:41:PHE:CD1	0.41	3.03	3	1
1:A:10:ILE:HD13	1:A:41:PHE:CE1	0.41	2.51	18	1

6.3 Torsion angles [i](#)

6.3.1 Protein backbone [i](#)

In the following table, the Percentiles column shows the percent Ramachandran outliers of the chain as a percentile score with respect to all PDB entries followed by that with respect to all NMR entries. The Analysed column shows the number of residues for which the backbone conformation was analysed and the total number of residues.

Mol	Chain	Analysed	Favoured	Allowed	Outliers	Percentiles	
1	A	84/121 (69%)	76±2 (91±2%)	7±2 (9±2%)	0±1 (1±1%)	23	72
All	All	1680/2420 (69%)	1526 (91%)	144 (9%)	10 (1%)	23	72

All 4 unique Ramachandran outliers are listed below. They are sorted by the frequency of occurrence in the ensemble.

Mol	Chain	Res	Type	Models (Total)
1	A	76	GLU	5
1	A	80	GLN	2
1	A	12	ASP	2
1	A	35	THR	1

6.3.2 Protein sidechains [i](#)

In the following table, the Percentiles column shows the percent sidechain outliers of the chain as a percentile score with respect to all PDB entries followed by that with respect to all NMR entries. The Analysed column shows the number of residues for which the sidechain conformation was analysed and the total number of residues.

Mol	Chain	Analysed	Rotameric	Outliers	Percentiles	
1	A	72/100 (72%)	65±2 (91±3%)	7±2 (9±3%)	10	56
All	All	1440/2000 (72%)	1305 (91%)	135 (9%)	10	56

All 35 unique residues with a non-rotameric sidechain are listed below. They are sorted by the frequency of occurrence in the ensemble.

Mol	Chain	Res	Type	Models (Total)
1	A	18	THR	20
1	A	75	GLN	12
1	A	88	LEU	11
1	A	55	ARG	9
1	A	35	THR	9
1	A	84	ARG	8
1	A	80	GLN	6
1	A	15	LEU	5
1	A	1	MET	5
1	A	42	ASP	5
1	A	83	ASN	4
1	A	3	VAL	3
1	A	97	GLU	3
1	A	12	ASP	3
1	A	78	ARG	3
1	A	5	SER	2
1	A	67	ASP	2
1	A	6	ARG	2
1	A	44	ARG	2
1	A	20	ILE	2
1	A	47	SER	2
1	A	54	GLU	2
1	A	65	SER	2
1	A	53	LYS	2
1	A	60	SER	1
1	A	43	ILE	1
1	A	95	ILE	1
1	A	69	VAL	1
1	A	14	GLU	1
1	A	81	GLU	1
1	A	99	THR	1
1	A	66	SER	1
1	A	50	GLU	1
1	A	16	GLU	1
1	A	17	ILE	1

6.3.3 RNA [i](#)

There are no RNA molecules in this entry.

6.4 Non-standard residues in protein, DNA, RNA chains [i](#)

There are no non-standard protein/DNA/RNA residues in this entry.

6.5 Carbohydrates [i](#)

There are no oligosaccharides in this entry.

6.6 Ligand geometry [i](#)

There are no ligands in this entry.

6.7 Other polymers [i](#)

There are no such molecules in this entry.

6.8 Polymer linkage issues [i](#)

There are no chain breaks in this entry.

7 Chemical shift validation (i)

The completeness of assignment taking into account all chemical shift lists is 92% for the well-defined parts and 90% for the entire structure.

7.1 Chemical shift list 1

File name: working_cs.cif

Chemical shift list name: *assigned_chem_shift_list_1*

7.1.1 Bookkeeping (i)

The following table shows the results of parsing the chemical shift list and reports the number of nuclei with statistically unusual chemical shifts.

Total number of shifts	1523
Number of shifts mapped to atoms	1523
Number of unparsed shifts	0
Number of shifts with mapping errors	0
Number of shifts with mapping warnings	0
Number of shift outliers (ShiftChecker)	0

7.1.2 Chemical shift referencing (i)

The following table shows the suggested chemical shift referencing corrections.

Nucleus	# values	Correction \pm precision, ppm	Suggested action
$^{13}\text{C}_\alpha$	121	-0.22 \pm 0.08	None needed (< 0.5 ppm)
$^{13}\text{C}_\beta$	114	0.09 \pm 0.14	None needed (< 0.5 ppm)
$^{13}\text{C}'$	117	-0.05 \pm 0.13	None needed (< 0.5 ppm)
^{15}N	112	-0.48 \pm 0.30	None needed (< 0.5 ppm)

7.1.3 Completeness of resonance assignments (i)

The following table shows the completeness of the chemical shift assignments for the well-defined regions of the structure. The overall completeness is 92%, i.e. 1114 atoms were assigned a chemical shift out of a possible 1216. 0 out of 15 assigned methyl groups (LEU and VAL) were assigned stereospecifically.

	Total	^1H	^{13}C	^{15}N
Backbone	410/423 (97%)	165/170 (97%)	166/170 (98%)	79/83 (95%)
Sidechain	654/728 (90%)	448/480 (93%)	200/221 (90%)	6/27 (22%)

Continued on next page...

Continued from previous page...

	Total	¹ H	¹³ C	¹⁵ N
Aromatic	50/65 (77%)	25/33 (76%)	25/28 (89%)	0/4 (0%)
Overall	1114/1216 (92%)	638/683 (93%)	391/419 (93%)	85/114 (75%)

The following table shows the completeness of the chemical shift assignments for the full structure. The overall completeness is 90%, i.e. 1522 atoms were assigned a chemical shift out of a possible 1684. 0 out of 17 assigned methyl groups (LEU and VAL) were assigned stereospecifically.

	Total	¹ H	¹³ C	¹⁵ N
Backbone	589/604 (98%)	239/245 (98%)	238/242 (98%)	112/117 (96%)
Sidechain	863/989 (87%)	589/645 (91%)	263/297 (89%)	11/47 (23%)
Aromatic	70/91 (77%)	35/46 (76%)	35/40 (88%)	0/5 (0%)
Overall	1522/1684 (90%)	863/936 (92%)	536/579 (93%)	123/169 (73%)

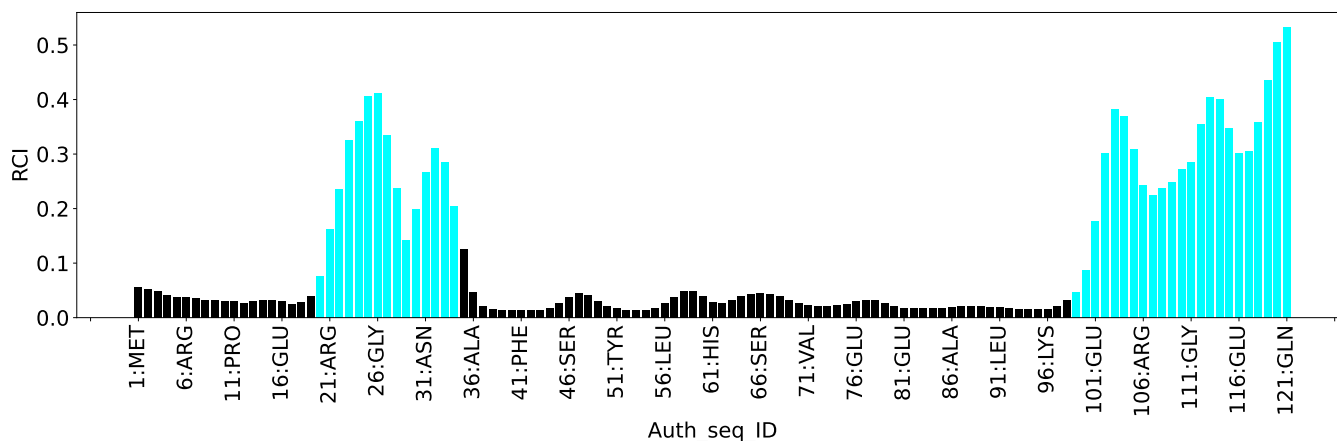
7.1.4 Statistically unusual chemical shifts [i](#)

There are no statistically unusual chemical shifts.

7.1.5 Random Coil Index (RCI) plots [i](#)

The image below reports *random coil index* values for the protein chains in the structure. The height of each bar gives a probability of a given residue to be disordered, as predicted from the available chemical shifts and the amino acid sequence. A value above 0.2 is an indication of significant predicted disorder. The colour of the bar shows whether the residue is in the well-defined core (black) or in the ill-defined residue ranges (cyan), as described in section 2 on ensemble composition. If well-defined core and ill-defined regions are not identified then it is shown as gray bars.

Random coil index (RCI) for chain A:



8 NMR restraints analysis

8.1 Conformationally restricting restraints

The following table provides the summary of experimentally observed NMR restraints in different categories. Restraints are classified into different categories based on the sequence separation of the atoms involved.

Description	Value
Total distance restraints	2438
Intra-residue ($ i-j =0$)	567
Sequential ($ i-j =1$)	573
Medium range ($ i-j >1$ and $ i-j <5$)	480
Long range ($ i-j \geq 5$)	818
Inter-chain	0
Hydrogen bond restraints	0
Disulfide bond restraints	0
Total dihedral-angle restraints	82
Number of unmapped restraints	0
Number of restraints per residue	20.8
Number of long range restraints per residue ¹	6.8

¹Long range hydrogen bonds and disulfide bonds are counted as long range restraints while calculating the number of long range restraints per residue

8.2 Residual restraint violations

This section provides the overview of the restraint violations analysis. The violations are binned as small, medium and large violations based on its absolute value. Average number of violations per model is calculated by dividing the total number of violations in each bin by the size of the ensemble.

8.2.1 Average number of distance violations per model

Distance violations less than 0.1 Å are not included in the calculation.

Bins (Å)	Average number of violations per model	Max (Å)
0.1-0.2 (Small)	1.2	0.19
0.2-0.5 (Medium)	1.6	0.49
>0.5 (Large)	2.8	1.66

8.2.2 Average number of dihedral-angle violations per model [i](#)

Dihedral-angle violations less than 1° are not included in the calculation.

Bins (°)	Average number of violations per model	Max (°)
1.0-10.0 (Small)	4.3	4.12
10.0-20.0 (Medium)	None	None
>20.0 (Large)	None	None

9 Distance violation analysis [i](#)

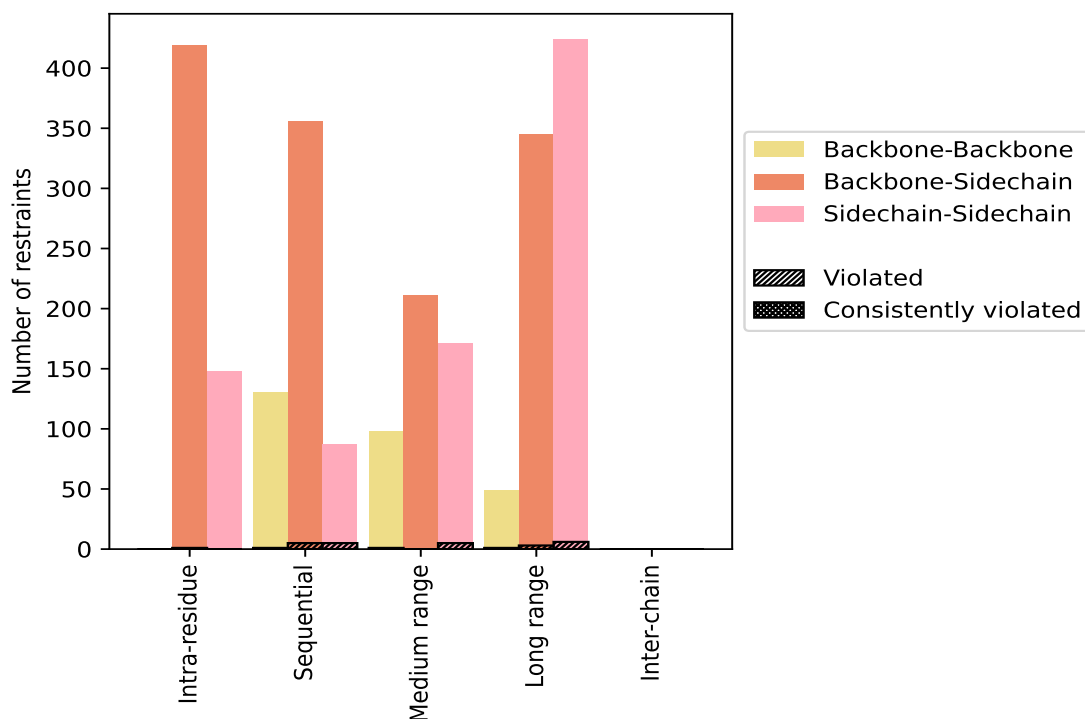
9.1 Summary of distance violations [i](#)

The following table shows the summary of distance violations in different restraint categories based on the sequence separation of the atoms involved. Each category is further sub-divided into three sub-categories based on the atoms involved. Violations less than 0.1 Å are not included in the statistics.

Restrains type	Count	% ¹	Violated ³			Consistently Violated ⁴		
			Count	% ²	% ¹	Count	% ²	% ¹
Intra-residue ($i-j =0$)	567	23.3	1	0.2	0.0	0	0.0	0.0
Backbone-Backbone	0	0.0	0	0.0	0.0	0	0.0	0.0
Backbone-Sidechain	419	17.2	1	0.2	0.0	0	0.0	0.0
Sidechain-Sidechain	148	6.1	0	0.0	0.0	0	0.0	0.0
Sequential ($i-j =1$)	573	23.5	11	1.9	0.5	0	0.0	0.0
Backbone-Backbone	130	5.3	1	0.8	0.0	0	0.0	0.0
Backbone-Sidechain	356	14.6	5	1.4	0.2	0	0.0	0.0
Sidechain-Sidechain	87	3.6	5	5.7	0.2	0	0.0	0.0
Medium range ($i-j >1$ & $i-j <5$)	480	19.7	6	1.2	0.2	0	0.0	0.0
Backbone-Backbone	98	4.0	1	1.0	0.0	0	0.0	0.0
Backbone-Sidechain	211	8.7	0	0.0	0.0	0	0.0	0.0
Sidechain-Sidechain	171	7.0	5	2.9	0.2	0	0.0	0.0
Long range ($i-j \geq 5$)	818	33.6	10	1.2	0.4	0	0.0	0.0
Backbone-Backbone	49	2.0	1	2.0	0.0	0	0.0	0.0
Backbone-Sidechain	345	14.2	3	0.9	0.1	0	0.0	0.0
Sidechain-Sidechain	424	17.4	6	1.4	0.2	0	0.0	0.0
Inter-chain	0	0.0	0	0.0	0.0	0	0.0	0.0
Backbone-Backbone	0	0.0	0	0.0	0.0	0	0.0	0.0
Backbone-Sidechain	0	0.0	0	0.0	0.0	0	0.0	0.0
Sidechain-Sidechain	0	0.0	0	0.0	0.0	0	0.0	0.0
Hydrogen bond	0	0.0	0	0.0	0.0	0	0.0	0.0
Disulfide bond	0	0.0	0	0.0	0.0	0	0.0	0.0
Total	2438	100.0	28	1.1	1.1	0	0.0	0.0
Backbone-Backbone	277	11.4	3	1.1	0.1	0	0.0	0.0
Backbone-Sidechain	1331	54.6	9	0.7	0.4	0	0.0	0.0
Sidechain-Sidechain	830	34.0	16	1.9	0.7	0	0.0	0.0

¹ percentage calculated with respect to the total number of distance restraints, ² percentage calculated with respect to the number of restraints in a particular restraint category, ³ violated in at least one model, ⁴ violated in all the models

9.1.1 Bar chart : Distribution of distance restraints and violations [i](#)



Violated and consistently violated restraints are shown using different hatch patterns in their respective categories. The hydrogen bonds and disulfid bonds are counted in their appropriate category on the x-axis

9.2 Distance violation statistics for each model [i](#)

The following table provides the distance violation statistics for each model in the ensemble. Violations less than 0.1 Å are not included in the statistics.

Model ID	Number of violations						Mean (Å)	Max (Å)	SD ⁶ (Å)	Median (Å)
	IR ¹	SQ ²	MR ³	LR ⁴	IC ⁵	Total				
1	0	3	2	1	0	6	0.25	0.4	0.13	0.25
2	0	4	0	2	0	6	0.53	0.92	0.29	0.48
3	0	6	0	2	0	8	1.02	1.66	0.47	0.93
4	0	0	2	0	0	2	0.16	0.21	0.05	0.16
5	0	6	0	3	0	9	0.86	1.44	0.46	0.88
6	0	2	1	0	0	3	0.28	0.34	0.07	0.31
7	0	8	1	3	0	12	0.69	1.36	0.5	0.72
8	1	1	3	2	0	7	0.12	0.16	0.03	0.11
9	0	3	2	1	0	6	0.35	0.7	0.23	0.3
10	0	6	1	2	0	9	0.78	1.35	0.36	0.87

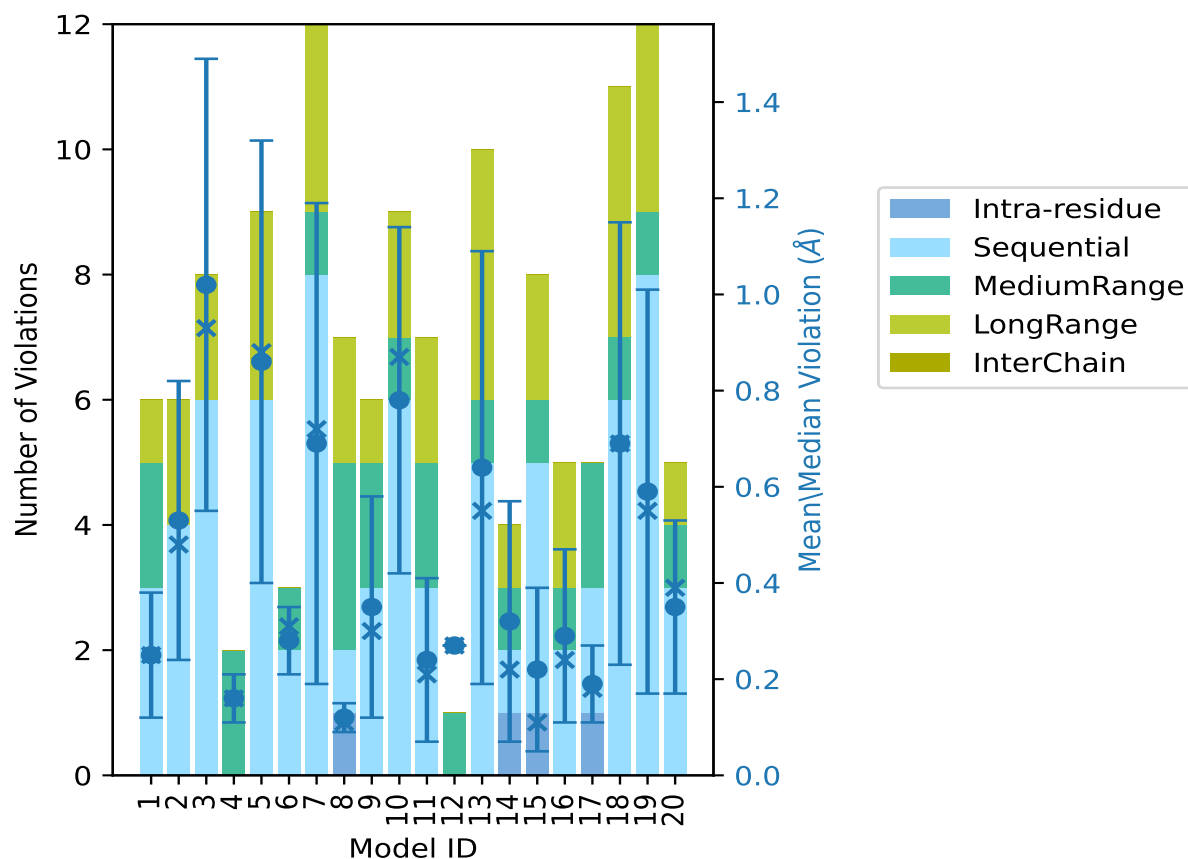
Continued on next page...

Continued from previous page...

Model ID	Number of violations						Mean (Å)	Max (Å)	SD ⁶ (Å)	Median (Å)
	IR ¹	SQ ²	MR ³	LR ⁴	IC ⁵	Total				
11	0	3	2	2	0	7	0.24	0.61	0.17	0.21
12	0	0	1	0	0	1	0.27	0.27	0.0	0.27
13	0	5	1	4	0	10	0.64	1.31	0.45	0.55
14	1	1	1	1	0	4	0.32	0.73	0.25	0.22
15	1	4	1	2	0	8	0.22	0.59	0.17	0.11
16	0	2	1	2	0	5	0.29	0.51	0.18	0.24
17	1	2	2	0	0	5	0.19	0.31	0.08	0.18
18	0	6	1	4	0	11	0.69	1.29	0.46	0.69
19	0	8	1	3	0	12	0.59	1.19	0.42	0.55
20	0	3	1	1	0	5	0.35	0.54	0.18	0.39

¹Intra-residue restraints, ²Sequential restraints, ³Medium range restraints, ⁴Long range restraints, ⁵Inter-chain restraints, ⁶Standard deviation

9.2.1 Bar graph : Distance Violation statistics for each model (i)



The mean(dot),median(x) and the standard deviation are shown in blue with respect to the y axis on the right

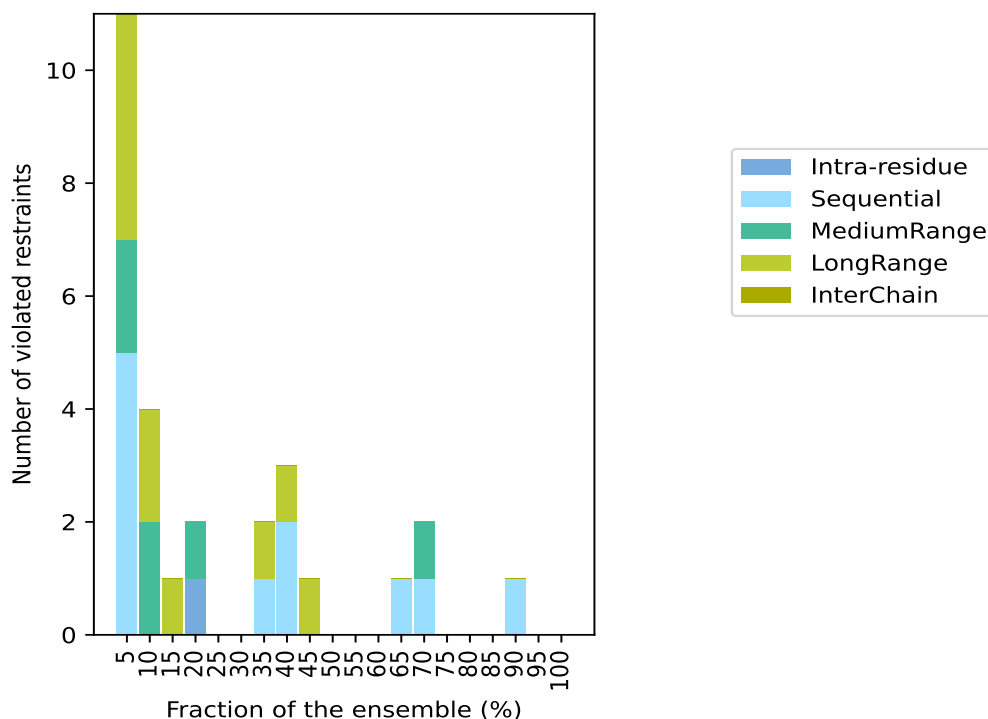
9.3 Distance violation statistics for the ensemble

Violation analysis may find that some restraints are violated in few models and some are violated in most of models. The following table provides this information as number of violated restraints for a given fraction of the ensemble. In total, 2410(IR:566, SQ:562, MR:474, LR:808, IC:0) restraints are not violated in the ensemble.

Number of violated restraints						Fraction of the ensemble	
IR ¹	SQ ²	MR ³	LR ⁴	IC ⁵	Total	Count ⁶	%
0	5	2	4	0	11	1	5.0
0	0	2	2	0	4	2	10.0
0	0	0	1	0	1	3	15.0
1	0	1	0	0	2	4	20.0
0	0	0	0	0	0	5	25.0
0	0	0	0	0	0	6	30.0
0	1	0	1	0	2	7	35.0
0	2	0	1	0	3	8	40.0
0	0	0	1	0	1	9	45.0
0	0	0	0	0	0	10	50.0
0	0	0	0	0	0	11	55.0
0	0	0	0	0	0	12	60.0
0	1	0	0	0	1	13	65.0
0	1	1	0	0	2	14	70.0
0	0	0	0	0	0	15	75.0
0	0	0	0	0	0	16	80.0
0	0	0	0	0	0	17	85.0
0	1	0	0	0	1	18	90.0
0	0	0	0	0	0	19	95.0
0	0	0	0	0	0	20	100.0

¹Intra-residue restraints, ²Sequential restraints, ³Medium range restraints, ⁴Long range restraints, ⁵Inter-chain restraints, ⁶ Number of models with violations

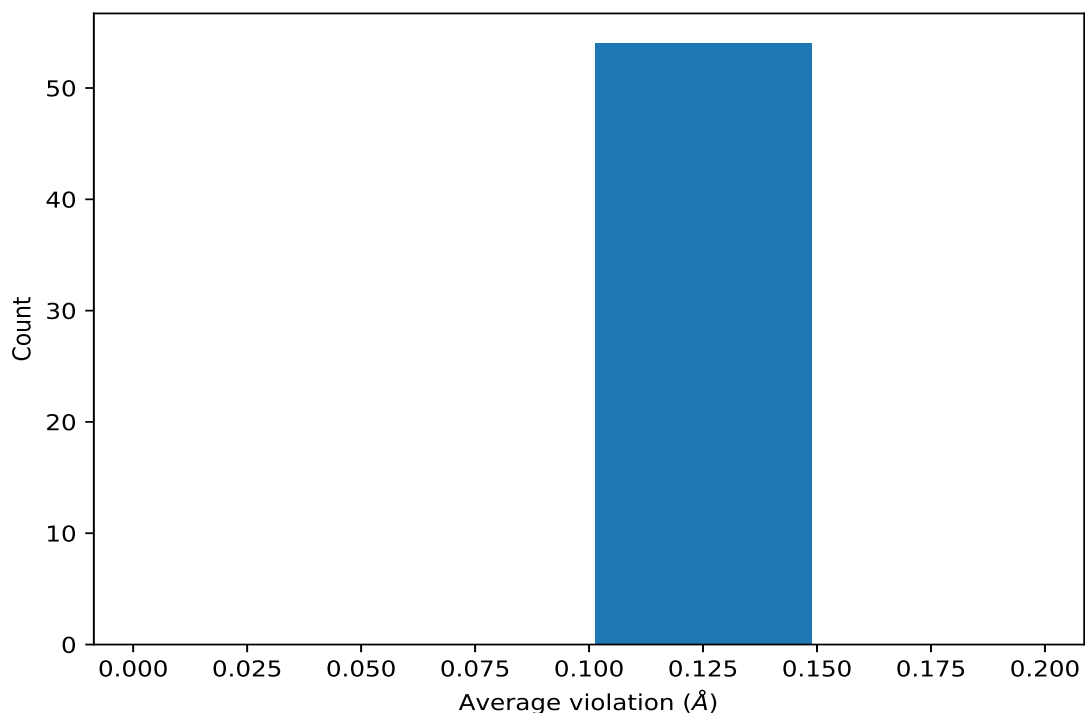
9.3.1 Bar graph : Distance violation statistics for the ensemble [i](#)



9.4 Most violated distance restraints in the ensemble [i](#)

9.4.1 Histogram : Distribution of mean distance violations [i](#)

The following histogram shows the distribution of the average value of the violation. The average is calculated for each restraint that is violated in more than one model over all the violated models in the ensemble



9.4.2 Table: Most violated distance restraints [i](#)

The following table provides the mean and the standard deviation of the violation for each restraint sorted by number of violated models and the mean value. The Key (restraint list ID, restraint ID) is the unique identifier for a given restraint. Rows with same key represent combinatorial or ambiguous restraints and are counted as a single restraint.

Key	Atom-1	Atom-2	Models ¹	Mean (Å)	SD ¹ (Å)	Median (Å)
(1,1560)	1:3:A:VAL:HB	1:9:A:ALA:HB1	9	0.1	0.0	0.1
(1,1560)	1:3:A:VAL:HB	1:9:A:ALA:HB2	9	0.1	0.0	0.1
(1,1560)	1:3:A:VAL:HB	1:9:A:ALA:HB3	9	0.1	0.0	0.1
(1,1157)	1:16:A:GLU:HB2	1:18:A:THR:HG21	4	0.1	0.0	0.1
(1,1157)	1:16:A:GLU:HB2	1:18:A:THR:HG22	4	0.1	0.0	0.1
(1,1157)	1:16:A:GLU:HB2	1:18:A:THR:HG23	4	0.1	0.0	0.1
(1,1157)	1:16:A:GLU:HB3	1:18:A:THR:HG21	4	0.1	0.0	0.1
(1,1157)	1:16:A:GLU:HB3	1:18:A:THR:HG22	4	0.1	0.0	0.1
(1,1157)	1:16:A:GLU:HB3	1:18:A:THR:HG23	4	0.1	0.0	0.1
(1,1438)	1:15:A:LEU:HD11	1:41:A:PHE:HD1	3	0.1	0.0	0.1
(1,1438)	1:15:A:LEU:HD11	1:41:A:PHE:HD2	3	0.1	0.0	0.1
(1,1438)	1:15:A:LEU:HD12	1:41:A:PHE:HD1	3	0.1	0.0	0.1
(1,1438)	1:15:A:LEU:HD12	1:41:A:PHE:HD2	3	0.1	0.0	0.1
(1,1438)	1:15:A:LEU:HD13	1:41:A:PHE:HD1	3	0.1	0.0	0.1
(1,1438)	1:15:A:LEU:HD13	1:41:A:PHE:HD2	3	0.1	0.0	0.1
(1,1375)	1:48:A:LEU:HD11	1:95:A:ILE:HD11	2	0.11	0.0	0.11

Continued on next page...

Continued from previous page...

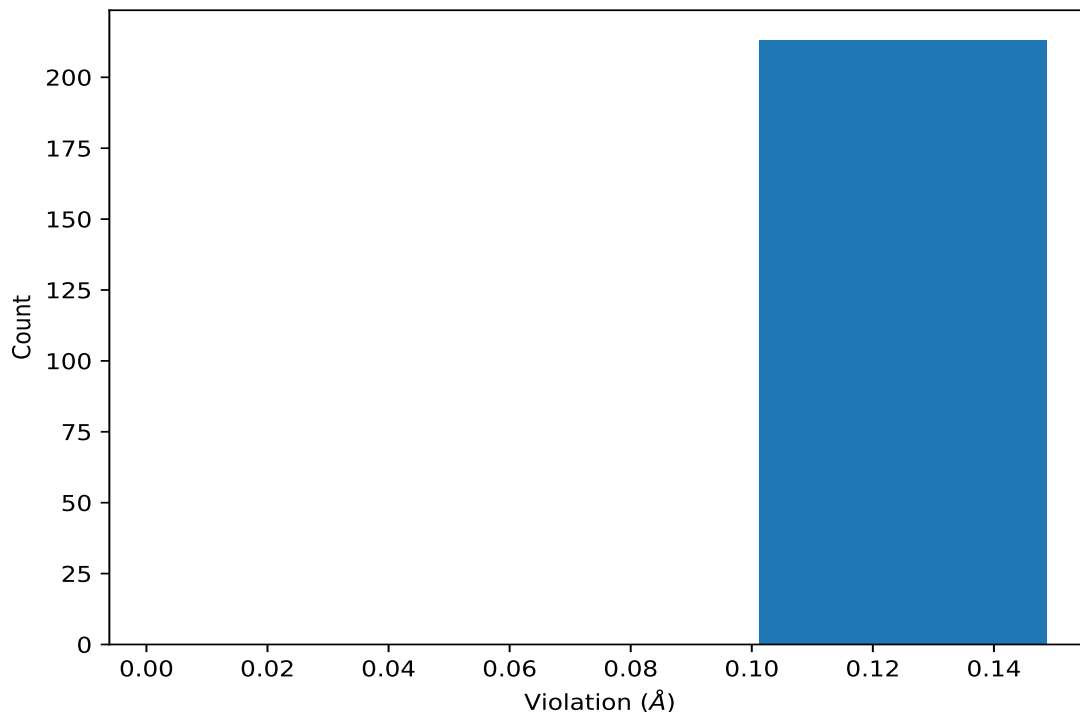
Key	Atom-1	Atom-2	Models ¹	Mean (Å)	SD ¹ (Å)	Median (Å)
(1,1375)	1:48:A:LEU:HD11	1:95:A:ILE:HD12	2	0.11	0.0	0.11
(1,1375)	1:48:A:LEU:HD11	1:95:A:ILE:HD13	2	0.11	0.0	0.11
(1,1375)	1:48:A:LEU:HD12	1:95:A:ILE:HD11	2	0.11	0.0	0.11
(1,1375)	1:48:A:LEU:HD12	1:95:A:ILE:HD12	2	0.11	0.0	0.11
(1,1375)	1:48:A:LEU:HD12	1:95:A:ILE:HD13	2	0.11	0.0	0.11
(1,1375)	1:48:A:LEU:HD13	1:95:A:ILE:HD11	2	0.11	0.0	0.11
(1,1375)	1:48:A:LEU:HD13	1:95:A:ILE:HD12	2	0.11	0.0	0.11
(1,1375)	1:48:A:LEU:HD13	1:95:A:ILE:HD13	2	0.11	0.0	0.11
(1,2329)	1:71:A:VAL:HG11	1:73:A:LYS:HD2	2	0.11	0.0	0.11
(1,2329)	1:71:A:VAL:HG11	1:73:A:LYS:HD3	2	0.11	0.0	0.11
(1,2329)	1:71:A:VAL:HG12	1:73:A:LYS:HD2	2	0.11	0.0	0.11
(1,2329)	1:71:A:VAL:HG12	1:73:A:LYS:HD3	2	0.11	0.0	0.11
(1,2329)	1:71:A:VAL:HG13	1:73:A:LYS:HD2	2	0.11	0.0	0.11
(1,2329)	1:71:A:VAL:HG13	1:73:A:LYS:HD3	2	0.11	0.0	0.11
(1,2329)	1:71:A:VAL:HG21	1:73:A:LYS:HD2	2	0.11	0.0	0.11
(1,2329)	1:71:A:VAL:HG21	1:73:A:LYS:HD3	2	0.11	0.0	0.11
(1,2329)	1:71:A:VAL:HG22	1:73:A:LYS:HD2	2	0.11	0.0	0.11
(1,2329)	1:71:A:VAL:HG22	1:73:A:LYS:HD3	2	0.11	0.0	0.11
(1,2329)	1:71:A:VAL:HG23	1:73:A:LYS:HD2	2	0.11	0.0	0.11
(1,2329)	1:71:A:VAL:HG23	1:73:A:LYS:HD3	2	0.11	0.0	0.11
(1,2208)	1:38:A:HIS:HD2	1:71:A:VAL:HG11	2	0.11	0.0	0.11
(1,2208)	1:38:A:HIS:HD2	1:71:A:VAL:HG12	2	0.11	0.0	0.11
(1,2208)	1:38:A:HIS:HD2	1:71:A:VAL:HG13	2	0.11	0.0	0.11
(1,2208)	1:38:A:HIS:HD2	1:71:A:VAL:HG21	2	0.11	0.0	0.11
(1,2208)	1:38:A:HIS:HD2	1:71:A:VAL:HG22	2	0.11	0.0	0.11
(1,2208)	1:38:A:HIS:HD2	1:71:A:VAL:HG23	2	0.11	0.0	0.11
(1,2381)	1:82:A:LEU:HD11	1:85:A:GLU:HB2	2	0.1	0.0	0.1
(1,2381)	1:82:A:LEU:HD11	1:85:A:GLU:HB3	2	0.1	0.0	0.1
(1,2381)	1:82:A:LEU:HD12	1:85:A:GLU:HB2	2	0.1	0.0	0.1
(1,2381)	1:82:A:LEU:HD12	1:85:A:GLU:HB3	2	0.1	0.0	0.1
(1,2381)	1:82:A:LEU:HD13	1:85:A:GLU:HB2	2	0.1	0.0	0.1
(1,2381)	1:82:A:LEU:HD13	1:85:A:GLU:HB3	2	0.1	0.0	0.1
(1,2381)	1:82:A:LEU:HD21	1:85:A:GLU:HB2	2	0.1	0.0	0.1
(1,2381)	1:82:A:LEU:HD21	1:85:A:GLU:HB3	2	0.1	0.0	0.1
(1,2381)	1:82:A:LEU:HD22	1:85:A:GLU:HB2	2	0.1	0.0	0.1
(1,2381)	1:82:A:LEU:HD22	1:85:A:GLU:HB3	2	0.1	0.0	0.1
(1,2381)	1:82:A:LEU:HD23	1:85:A:GLU:HB2	2	0.1	0.0	0.1
(1,2381)	1:82:A:LEU:HD23	1:85:A:GLU:HB3	2	0.1	0.0	0.1

¹Number of violated models, ²Standard deviation

9.5 All violated distance restraints [i](#)

9.5.1 Histogram : Distribution of distance violations [i](#)

The following histogram shows the distribution of the absolute value of the violation for all violated restraints in the ensemble.



9.5.2 Table : All distance violations [i](#)

The following table lists the absolute value of the violation for each restraint in the ensemble sorted by its value. The Key (restraint list ID, restraint ID) is the unique identifier for a given restraint. Rows with same key represent combinatorial or ambiguous restraints and are counted as a single restraint.

Key	Atom-1	Atom-2	Model ID	Violation (Å)
(1,2329)	1:71:A:VAL:HG11	1:73:A:LYS:HD2	7	0.11
(1,2329)	1:71:A:VAL:HG11	1:73:A:LYS:HD3	7	0.11
(1,2329)	1:71:A:VAL:HG12	1:73:A:LYS:HD2	7	0.11
(1,2329)	1:71:A:VAL:HG12	1:73:A:LYS:HD3	7	0.11
(1,2329)	1:71:A:VAL:HG13	1:73:A:LYS:HD2	7	0.11
(1,2329)	1:71:A:VAL:HG13	1:73:A:LYS:HD3	7	0.11
(1,2329)	1:71:A:VAL:HG21	1:73:A:LYS:HD2	7	0.11
(1,2329)	1:71:A:VAL:HG21	1:73:A:LYS:HD3	7	0.11
(1,2329)	1:71:A:VAL:HG22	1:73:A:LYS:HD2	7	0.11
(1,2329)	1:71:A:VAL:HG22	1:73:A:LYS:HD3	7	0.11

Continued on next page...

Continued from previous page...

Key	Atom-1	Atom-2	Model ID	Violation (Å)
(1,2329)	1:71:A:VAL:HG23	1:73:A:LYS:HD2	7	0.11
(1,2329)	1:71:A:VAL:HG23	1:73:A:LYS:HD3	7	0.11
(1,2329)	1:71:A:VAL:HG11	1:73:A:LYS:HD2	13	0.11
(1,2329)	1:71:A:VAL:HG11	1:73:A:LYS:HD3	13	0.11
(1,2329)	1:71:A:VAL:HG12	1:73:A:LYS:HD2	13	0.11
(1,2329)	1:71:A:VAL:HG12	1:73:A:LYS:HD3	13	0.11
(1,2329)	1:71:A:VAL:HG13	1:73:A:LYS:HD2	13	0.11
(1,2329)	1:71:A:VAL:HG13	1:73:A:LYS:HD3	13	0.11
(1,2329)	1:71:A:VAL:HG21	1:73:A:LYS:HD2	13	0.11
(1,2329)	1:71:A:VAL:HG21	1:73:A:LYS:HD3	13	0.11
(1,2329)	1:71:A:VAL:HG22	1:73:A:LYS:HD2	13	0.11
(1,2329)	1:71:A:VAL:HG22	1:73:A:LYS:HD3	13	0.11
(1,2329)	1:71:A:VAL:HG23	1:73:A:LYS:HD2	13	0.11
(1,2329)	1:71:A:VAL:HG23	1:73:A:LYS:HD3	13	0.11
(1,2302)	1:60:A:SER:HB2	1:98:A:LEU:HD21	18	0.11
(1,2302)	1:60:A:SER:HB2	1:98:A:LEU:HD22	18	0.11
(1,2302)	1:60:A:SER:HB2	1:98:A:LEU:HD23	18	0.11
(1,2302)	1:60:A:SER:HB3	1:98:A:LEU:HD21	18	0.11
(1,2302)	1:60:A:SER:HB3	1:98:A:LEU:HD22	18	0.11
(1,2302)	1:60:A:SER:HB3	1:98:A:LEU:HD23	18	0.11
(1,2208)	1:38:A:HIS:HD2	1:71:A:VAL:HG11	13	0.11
(1,2208)	1:38:A:HIS:HD2	1:71:A:VAL:HG12	13	0.11
(1,2208)	1:38:A:HIS:HD2	1:71:A:VAL:HG13	13	0.11
(1,2208)	1:38:A:HIS:HD2	1:71:A:VAL:HG21	13	0.11
(1,2208)	1:38:A:HIS:HD2	1:71:A:VAL:HG22	13	0.11
(1,2208)	1:38:A:HIS:HD2	1:71:A:VAL:HG23	13	0.11
(1,2183)	1:29:A:HIS:HB2	1:30:A:VAL:HG11	7	0.11
(1,2183)	1:29:A:HIS:HB2	1:30:A:VAL:HG12	7	0.11
(1,2183)	1:29:A:HIS:HB2	1:30:A:VAL:HG13	7	0.11
(1,2183)	1:29:A:HIS:HB3	1:30:A:VAL:HG11	7	0.11
(1,2183)	1:29:A:HIS:HB3	1:30:A:VAL:HG12	7	0.11
(1,2183)	1:29:A:HIS:HB3	1:30:A:VAL:HG13	7	0.11
(1,1561)	1:8:A:VAL:HG11	1:9:A:ALA:HB1	19	0.11
(1,1561)	1:8:A:VAL:HG11	1:9:A:ALA:HB2	19	0.11
(1,1561)	1:8:A:VAL:HG11	1:9:A:ALA:HB3	19	0.11
(1,1561)	1:8:A:VAL:HG12	1:9:A:ALA:HB1	19	0.11
(1,1561)	1:8:A:VAL:HG12	1:9:A:ALA:HB2	19	0.11
(1,1561)	1:8:A:VAL:HG12	1:9:A:ALA:HB3	19	0.11
(1,1561)	1:8:A:VAL:HG13	1:9:A:ALA:HB1	19	0.11
(1,1561)	1:8:A:VAL:HG13	1:9:A:ALA:HB2	19	0.11
(1,1561)	1:8:A:VAL:HG13	1:9:A:ALA:HB3	19	0.11
(1,1560)	1:3:A:VAL:HB	1:9:A:ALA:HB1	1	0.11

Continued on next page...

Continued from previous page...

Key	Atom-1	Atom-2	Model ID	Violation (Å)
(1,1560)	1:3:A:VAL:HB	1:9:A:ALA:HB2	1	0.11
(1,1560)	1:3:A:VAL:HB	1:9:A:ALA:HB3	1	0.11
(1,1560)	1:3:A:VAL:HB	1:9:A:ALA:HB1	14	0.11
(1,1560)	1:3:A:VAL:HB	1:9:A:ALA:HB2	14	0.11
(1,1560)	1:3:A:VAL:HB	1:9:A:ALA:HB3	14	0.11
(1,1560)	1:3:A:VAL:HB	1:9:A:ALA:HB1	15	0.11
(1,1560)	1:3:A:VAL:HB	1:9:A:ALA:HB2	15	0.11
(1,1560)	1:3:A:VAL:HB	1:9:A:ALA:HB3	15	0.11
(1,1560)	1:3:A:VAL:HB	1:9:A:ALA:HB1	20	0.11
(1,1560)	1:3:A:VAL:HB	1:9:A:ALA:HB2	20	0.11
(1,1560)	1:3:A:VAL:HB	1:9:A:ALA:HB3	20	0.11
(1,1438)	1:15:A:LEU:HD11	1:41:A:PHE:HD1	16	0.11
(1,1438)	1:15:A:LEU:HD11	1:41:A:PHE:HD2	16	0.11
(1,1438)	1:15:A:LEU:HD12	1:41:A:PHE:HD1	16	0.11
(1,1438)	1:15:A:LEU:HD12	1:41:A:PHE:HD2	16	0.11
(1,1438)	1:15:A:LEU:HD13	1:41:A:PHE:HD1	16	0.11
(1,1438)	1:15:A:LEU:HD13	1:41:A:PHE:HD2	16	0.11
(1,1375)	1:48:A:LEU:HD11	1:95:A:ILE:HD11	8	0.11
(1,1375)	1:48:A:LEU:HD11	1:95:A:ILE:HD12	8	0.11
(1,1375)	1:48:A:LEU:HD11	1:95:A:ILE:HD13	8	0.11
(1,1375)	1:48:A:LEU:HD12	1:95:A:ILE:HD11	8	0.11
(1,1375)	1:48:A:LEU:HD12	1:95:A:ILE:HD12	8	0.11
(1,1375)	1:48:A:LEU:HD12	1:95:A:ILE:HD13	8	0.11
(1,1375)	1:48:A:LEU:HD13	1:95:A:ILE:HD11	8	0.11
(1,1375)	1:48:A:LEU:HD13	1:95:A:ILE:HD12	8	0.11
(1,1375)	1:48:A:LEU:HD13	1:95:A:ILE:HD13	8	0.11
(1,1375)	1:48:A:LEU:HD11	1:95:A:ILE:HD11	13	0.11
(1,1375)	1:48:A:LEU:HD11	1:95:A:ILE:HD12	13	0.11
(1,1375)	1:48:A:LEU:HD11	1:95:A:ILE:HD13	13	0.11
(1,1375)	1:48:A:LEU:HD12	1:95:A:ILE:HD11	13	0.11
(1,1375)	1:48:A:LEU:HD12	1:95:A:ILE:HD12	13	0.11
(1,1375)	1:48:A:LEU:HD12	1:95:A:ILE:HD13	13	0.11
(1,1375)	1:48:A:LEU:HD13	1:95:A:ILE:HD11	13	0.11
(1,1375)	1:48:A:LEU:HD13	1:95:A:ILE:HD12	13	0.11
(1,1375)	1:48:A:LEU:HD13	1:95:A:ILE:HD13	13	0.11
(1,2381)	1:82:A:LEU:HD11	1:85:A:GLU:HB2	17	0.1
(1,2381)	1:82:A:LEU:HD11	1:85:A:GLU:HB3	17	0.1
(1,2381)	1:82:A:LEU:HD12	1:85:A:GLU:HB2	17	0.1
(1,2381)	1:82:A:LEU:HD12	1:85:A:GLU:HB3	17	0.1
(1,2381)	1:82:A:LEU:HD13	1:85:A:GLU:HB2	17	0.1
(1,2381)	1:82:A:LEU:HD13	1:85:A:GLU:HB3	17	0.1
(1,2381)	1:82:A:LEU:HD21	1:85:A:GLU:HB2	17	0.1

Continued on next page...

Continued from previous page...

Key	Atom-1	Atom-2	Model ID	Violation (Å)
(1,2381)	1:82:A:LEU:HD21	1:85:A:GLU:HB3	17	0.1
(1,2381)	1:82:A:LEU:HD22	1:85:A:GLU:HB2	17	0.1
(1,2381)	1:82:A:LEU:HD22	1:85:A:GLU:HB3	17	0.1
(1,2381)	1:82:A:LEU:HD23	1:85:A:GLU:HB2	17	0.1
(1,2381)	1:82:A:LEU:HD23	1:85:A:GLU:HB3	17	0.1
(1,2381)	1:82:A:LEU:HD11	1:85:A:GLU:HB2	18	0.1
(1,2381)	1:82:A:LEU:HD11	1:85:A:GLU:HB3	18	0.1
(1,2381)	1:82:A:LEU:HD12	1:85:A:GLU:HB2	18	0.1
(1,2381)	1:82:A:LEU:HD12	1:85:A:GLU:HB3	18	0.1
(1,2381)	1:82:A:LEU:HD13	1:85:A:GLU:HB2	18	0.1
(1,2381)	1:82:A:LEU:HD13	1:85:A:GLU:HB3	18	0.1
(1,2381)	1:82:A:LEU:HD21	1:85:A:GLU:HB2	18	0.1
(1,2381)	1:82:A:LEU:HD21	1:85:A:GLU:HB3	18	0.1
(1,2381)	1:82:A:LEU:HD22	1:85:A:GLU:HB2	18	0.1
(1,2381)	1:82:A:LEU:HD22	1:85:A:GLU:HB3	18	0.1
(1,2381)	1:82:A:LEU:HD23	1:85:A:GLU:HB2	18	0.1
(1,2381)	1:82:A:LEU:HD23	1:85:A:GLU:HB3	18	0.1
(1,2299)	1:59:A:ALA:HB1	1:60:A:SER:HB2	7	0.1
(1,2299)	1:59:A:ALA:HB1	1:60:A:SER:HB3	7	0.1
(1,2299)	1:59:A:ALA:HB2	1:60:A:SER:HB2	7	0.1
(1,2299)	1:59:A:ALA:HB2	1:60:A:SER:HB3	7	0.1
(1,2299)	1:59:A:ALA:HB3	1:60:A:SER:HB2	7	0.1
(1,2299)	1:59:A:ALA:HB3	1:60:A:SER:HB3	7	0.1
(1,2208)	1:38:A:HIS:HD2	1:71:A:VAL:HG11	11	0.1
(1,2208)	1:38:A:HIS:HD2	1:71:A:VAL:HG12	11	0.1
(1,2208)	1:38:A:HIS:HD2	1:71:A:VAL:HG13	11	0.1
(1,2208)	1:38:A:HIS:HD2	1:71:A:VAL:HG21	11	0.1
(1,2208)	1:38:A:HIS:HD2	1:71:A:VAL:HG22	11	0.1
(1,2208)	1:38:A:HIS:HD2	1:71:A:VAL:HG23	11	0.1
(1,2185)	1:30:A:VAL:HG21	1:31:A:ASN:HB2	15	0.1
(1,2185)	1:30:A:VAL:HG21	1:31:A:ASN:HB3	15	0.1
(1,2185)	1:30:A:VAL:HG22	1:31:A:ASN:HB2	15	0.1
(1,2185)	1:30:A:VAL:HG22	1:31:A:ASN:HB3	15	0.1
(1,2185)	1:30:A:VAL:HG23	1:31:A:ASN:HB2	15	0.1
(1,2185)	1:30:A:VAL:HG23	1:31:A:ASN:HB3	15	0.1
(1,2125)	1:5:A:SER:HB2	1:8:A:VAL:HG21	8	0.1
(1,2125)	1:5:A:SER:HB2	1:8:A:VAL:HG22	8	0.1
(1,2125)	1:5:A:SER:HB2	1:8:A:VAL:HG23	8	0.1
(1,2125)	1:5:A:SER:HB3	1:8:A:VAL:HG21	8	0.1
(1,2125)	1:5:A:SER:HB3	1:8:A:VAL:HG22	8	0.1
(1,2125)	1:5:A:SER:HB3	1:8:A:VAL:HG23	8	0.1
(1,1912)	1:3:A:VAL:HG11	1:9:A:ALA:HB1	8	0.1

Continued on next page...

Continued from previous page...

Key	Atom-1	Atom-2	Model ID	Violation (Å)
(1,1912)	1:3:A:VAL:HG11	1:9:A:ALA:HB2	8	0.1
(1,1912)	1:3:A:VAL:HG11	1:9:A:ALA:HB3	8	0.1
(1,1912)	1:3:A:VAL:HG12	1:9:A:ALA:HB1	8	0.1
(1,1912)	1:3:A:VAL:HG12	1:9:A:ALA:HB2	8	0.1
(1,1912)	1:3:A:VAL:HG12	1:9:A:ALA:HB3	8	0.1
(1,1912)	1:3:A:VAL:HG13	1:9:A:ALA:HB1	8	0.1
(1,1912)	1:3:A:VAL:HG13	1:9:A:ALA:HB2	8	0.1
(1,1912)	1:3:A:VAL:HG13	1:9:A:ALA:HB3	8	0.1
(1,1705)	1:22:A:ALA:HB1	1:23:A:GLN:HG2	19	0.1
(1,1705)	1:22:A:ALA:HB1	1:23:A:GLN:HG3	19	0.1
(1,1705)	1:22:A:ALA:HB2	1:23:A:GLN:HG2	19	0.1
(1,1705)	1:22:A:ALA:HB2	1:23:A:GLN:HG3	19	0.1
(1,1705)	1:22:A:ALA:HB3	1:23:A:GLN:HG2	19	0.1
(1,1705)	1:22:A:ALA:HB3	1:23:A:GLN:HG3	19	0.1
(1,1560)	1:3:A:VAL:HB	1:9:A:ALA:HB1	5	0.1
(1,1560)	1:3:A:VAL:HB	1:9:A:ALA:HB2	5	0.1
(1,1560)	1:3:A:VAL:HB	1:9:A:ALA:HB3	5	0.1
(1,1560)	1:3:A:VAL:HB	1:9:A:ALA:HB1	7	0.1
(1,1560)	1:3:A:VAL:HB	1:9:A:ALA:HB2	7	0.1
(1,1560)	1:3:A:VAL:HB	1:9:A:ALA:HB3	7	0.1
(1,1560)	1:3:A:VAL:HB	1:9:A:ALA:HB1	9	0.1
(1,1560)	1:3:A:VAL:HB	1:9:A:ALA:HB2	9	0.1
(1,1560)	1:3:A:VAL:HB	1:9:A:ALA:HB3	9	0.1
(1,1560)	1:3:A:VAL:HB	1:9:A:ALA:HB1	16	0.1
(1,1560)	1:3:A:VAL:HB	1:9:A:ALA:HB2	16	0.1
(1,1560)	1:3:A:VAL:HB	1:9:A:ALA:HB3	16	0.1
(1,1560)	1:3:A:VAL:HB	1:9:A:ALA:HB1	19	0.1
(1,1560)	1:3:A:VAL:HB	1:9:A:ALA:HB2	19	0.1
(1,1560)	1:3:A:VAL:HB	1:9:A:ALA:HB3	19	0.1
(1,1473)	1:39:A:LEU:HD21	1:41:A:PHE:HD1	11	0.1
(1,1473)	1:39:A:LEU:HD21	1:41:A:PHE:HD2	11	0.1
(1,1473)	1:39:A:LEU:HD22	1:41:A:PHE:HD1	11	0.1
(1,1473)	1:39:A:LEU:HD22	1:41:A:PHE:HD2	11	0.1
(1,1473)	1:39:A:LEU:HD23	1:41:A:PHE:HD1	11	0.1
(1,1473)	1:39:A:LEU:HD23	1:41:A:PHE:HD2	11	0.1
(1,1445)	1:15:A:LEU:HD11	1:41:A:PHE:HA	18	0.1
(1,1445)	1:15:A:LEU:HD12	1:41:A:PHE:HA	18	0.1
(1,1445)	1:15:A:LEU:HD13	1:41:A:PHE:HA	18	0.1
(1,1438)	1:15:A:LEU:HD11	1:41:A:PHE:HD1	11	0.1
(1,1438)	1:15:A:LEU:HD11	1:41:A:PHE:HD2	11	0.1
(1,1438)	1:15:A:LEU:HD12	1:41:A:PHE:HD1	11	0.1
(1,1438)	1:15:A:LEU:HD12	1:41:A:PHE:HD2	11	0.1

Continued on next page...

Continued from previous page...

Key	Atom-1	Atom-2	Model ID	Violation (Å)
(1,1438)	1:15:A:LEU:HD13	1:41:A:PHE:HD1	11	0.1
(1,1438)	1:15:A:LEU:HD13	1:41:A:PHE:HD2	11	0.1
(1,1438)	1:15:A:LEU:HD11	1:41:A:PHE:HD1	15	0.1
(1,1438)	1:15:A:LEU:HD11	1:41:A:PHE:HD2	15	0.1
(1,1438)	1:15:A:LEU:HD12	1:41:A:PHE:HD1	15	0.1
(1,1438)	1:15:A:LEU:HD12	1:41:A:PHE:HD2	15	0.1
(1,1438)	1:15:A:LEU:HD13	1:41:A:PHE:HD1	15	0.1
(1,1438)	1:15:A:LEU:HD13	1:41:A:PHE:HD2	15	0.1
(1,1157)	1:16:A:GLU:HB2	1:18:A:THR:HG21	1	0.1
(1,1157)	1:16:A:GLU:HB2	1:18:A:THR:HG22	1	0.1
(1,1157)	1:16:A:GLU:HB2	1:18:A:THR:HG23	1	0.1
(1,1157)	1:16:A:GLU:HB3	1:18:A:THR:HG21	1	0.1
(1,1157)	1:16:A:GLU:HB3	1:18:A:THR:HG22	1	0.1
(1,1157)	1:16:A:GLU:HB3	1:18:A:THR:HG23	1	0.1
(1,1157)	1:16:A:GLU:HB2	1:18:A:THR:HG21	4	0.1
(1,1157)	1:16:A:GLU:HB2	1:18:A:THR:HG22	4	0.1
(1,1157)	1:16:A:GLU:HB2	1:18:A:THR:HG23	4	0.1
(1,1157)	1:16:A:GLU:HB3	1:18:A:THR:HG21	4	0.1
(1,1157)	1:16:A:GLU:HB3	1:18:A:THR:HG22	4	0.1
(1,1157)	1:16:A:GLU:HB3	1:18:A:THR:HG23	4	0.1
(1,1157)	1:16:A:GLU:HB2	1:18:A:THR:HG21	8	0.1
(1,1157)	1:16:A:GLU:HB2	1:18:A:THR:HG22	8	0.1
(1,1157)	1:16:A:GLU:HB2	1:18:A:THR:HG23	8	0.1
(1,1157)	1:16:A:GLU:HB3	1:18:A:THR:HG21	8	0.1
(1,1157)	1:16:A:GLU:HB3	1:18:A:THR:HG22	8	0.1
(1,1157)	1:16:A:GLU:HB3	1:18:A:THR:HG23	8	0.1
(1,1157)	1:16:A:GLU:HB2	1:18:A:THR:HG21	9	0.1
(1,1157)	1:16:A:GLU:HB2	1:18:A:THR:HG22	9	0.1
(1,1157)	1:16:A:GLU:HB2	1:18:A:THR:HG23	9	0.1
(1,1157)	1:16:A:GLU:HB3	1:18:A:THR:HG21	9	0.1
(1,1157)	1:16:A:GLU:HB3	1:18:A:THR:HG22	9	0.1
(1,1157)	1:16:A:GLU:HB3	1:18:A:THR:HG23	9	0.1
(1,160)	1:20:A:ILE:HG21	1:36:A:ALA:H	10	0.1
(1,160)	1:20:A:ILE:HG22	1:36:A:ALA:H	10	0.1
(1,160)	1:20:A:ILE:HG23	1:36:A:ALA:H	10	0.1

10 Dihedral-angle violation analysis [i](#)

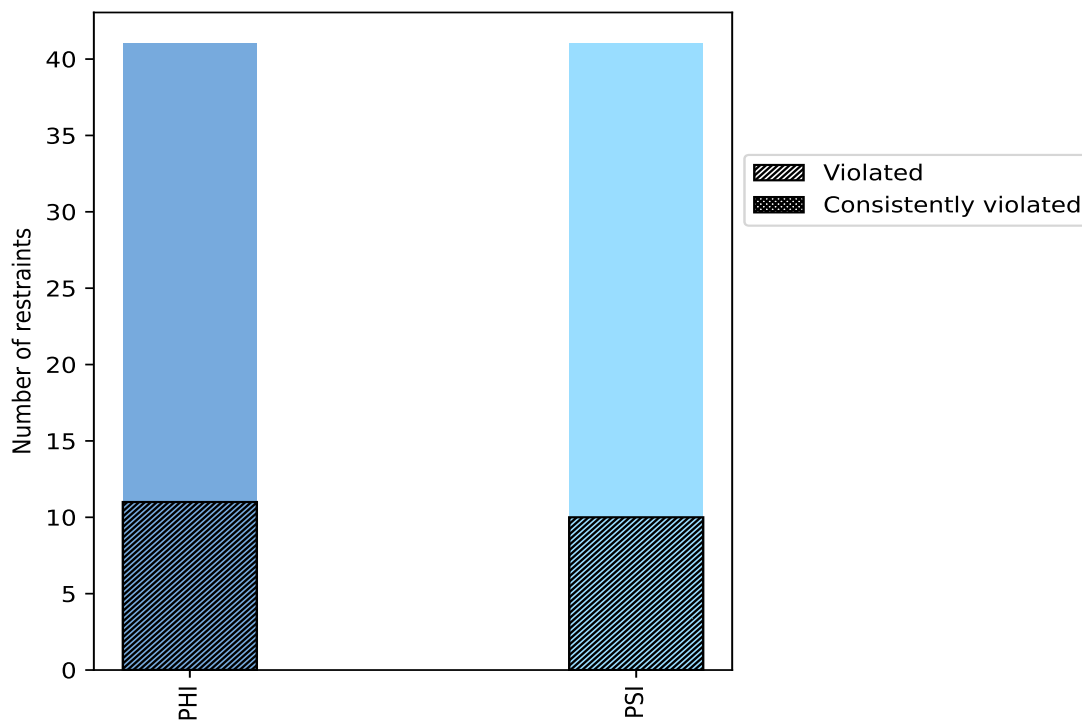
10.1 Summary of dihedral-angle violations [i](#)

The following table provides the summary of dihedral-angle violations in different dihedral-angle types. Violations less than 1° are not included in the calculation.

Angle type	Count	% ¹	Violated ³			Consistently Violated ⁴		
			Count	% ²	% ¹	Count	% ²	% ¹
PHI	41	50.0	11	26.8	13.4	0	0.0	0.0
PSI	41	50.0	10	24.4	12.2	0	0.0	0.0
Total	82	100.0	21	25.6	25.6	0	0.0	0.0

¹ percentage calculated with respect to total number of dihedral-angle restraints, ² percentage calculated with respect to number of restraints in a particular dihedral-angle type, ³ violated in at least one model, ⁴ violated in all the models

10.1.1 Bar chart : Distribution of dihedral-angles and violations [i](#)



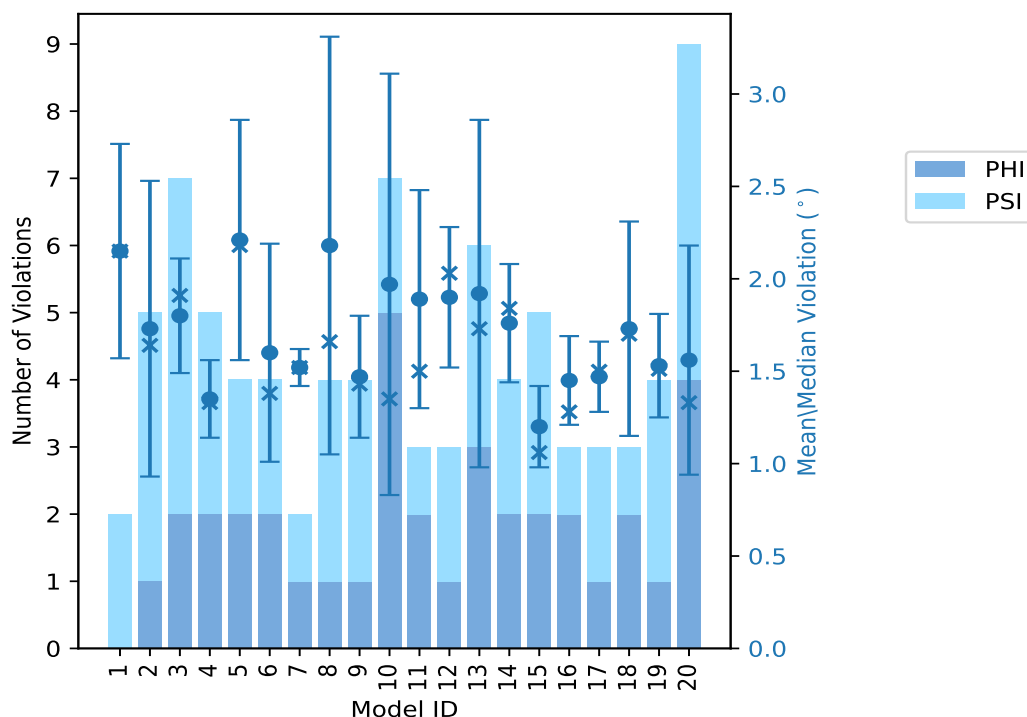
Violated and consistently violated restraints are shown using different hatch patterns in their respective categories

10.2 Dihedral-angle violation statistics for each model [i](#)

The following table provides the dihedral-angle violation statistics for each model in the ensemble. Violations less than 1° are not included in the statistics.

Model ID	Number of violations			Mean (°)	Max (°)	SD (°)	Median (°)
	PHI	PSI	Total				
1	0	2	2	2.15	2.73	0.58	2.15
2	1	4	5	1.73	3.22	0.8	1.64
3	2	5	7	1.8	2.16	0.31	1.91
4	2	3	5	1.35	1.64	0.21	1.33
5	2	2	4	2.21	3.15	0.65	2.18
6	2	2	4	1.6	2.56	0.59	1.38
7	1	1	2	1.52	1.63	0.1	1.52
8	1	3	4	2.18	4.12	1.13	1.66
9	1	3	4	1.47	1.95	0.33	1.43
10	5	2	7	1.97	3.91	1.14	1.35
11	2	1	3	1.89	2.73	0.59	1.5
12	1	2	3	1.9	2.28	0.38	2.03
13	3	3	6	1.92	3.68	0.94	1.73
14	2	2	4	1.76	2.12	0.32	1.84
15	2	3	5	1.2	1.59	0.22	1.06
16	2	1	3	1.45	1.79	0.24	1.28
17	1	2	3	1.47	1.69	0.19	1.5
18	2	1	3	1.73	2.45	0.58	1.7
19	1	3	4	1.53	1.94	0.28	1.51
20	4	5	9	1.56	3.02	0.62	1.33

10.2.1 Bar graph : Dihedral violation statistics for each model [i](#)



The mean(dot),median(x) and the standard deviation are shown in blue with respect to the y axis on the right

10.3 Dihedral-angle violation statistics for the ensemble [i](#)

Violation analysis may find that some restraints are violated in very few models and some are violated in most of models. The following table provides this information as number of violated restraints for a given fraction of ensemble.

Number of violated restraints			Fraction of the ensemble	
PHI	PSI	Total	Count ¹	%
5	3	8	1	5.0
0	0	0	2	10.0
3	1	4	3	15.0
1	2	3	4	20.0
0	2	2	5	25.0
0	0	0	6	30.0
1	0	1	7	35.0
0	1	1	8	40.0
0	0	0	9	45.0
0	0	0	10	50.0
0	0	0	11	55.0

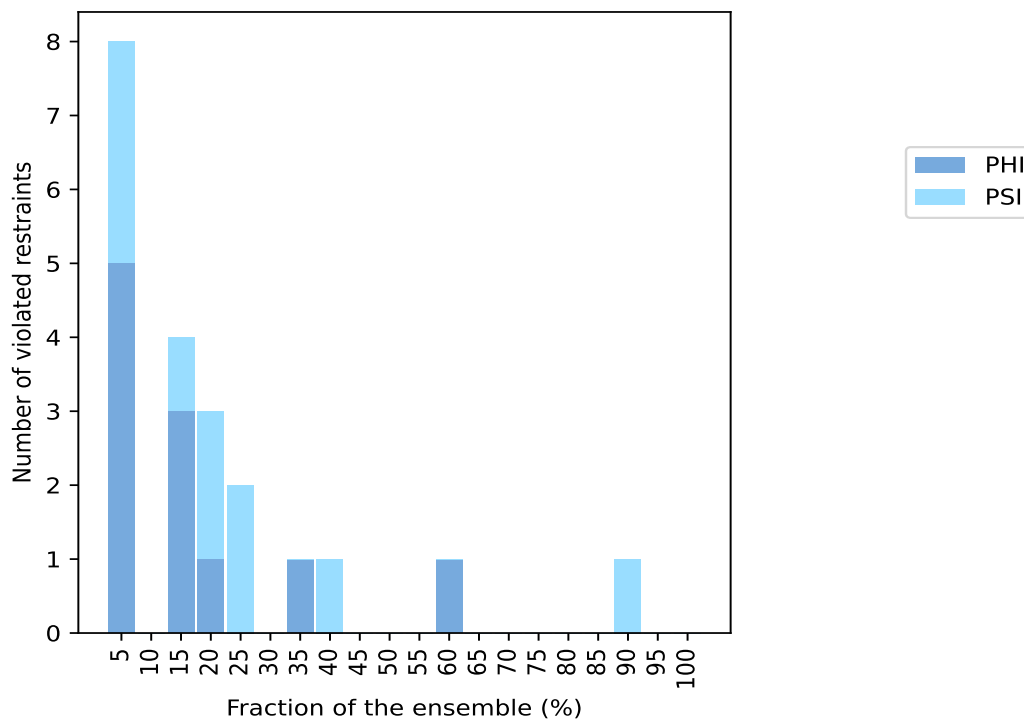
Continued on next page...

Continued from previous page...

Number of violated restraints			Fraction of the ensemble	
PHI	PSI	Total	Count ¹	%
1	0	1	12	60.0
0	0	0	13	65.0
0	0	0	14	70.0
0	0	0	15	75.0
0	0	0	16	80.0
0	0	0	17	85.0
0	1	1	18	90.0
0	0	0	19	95.0
0	0	0	20	100.0

¹ Number of models with violations

10.3.1 Bar graph : Dihedral-angle Violation statistics for the ensemble [i](#)

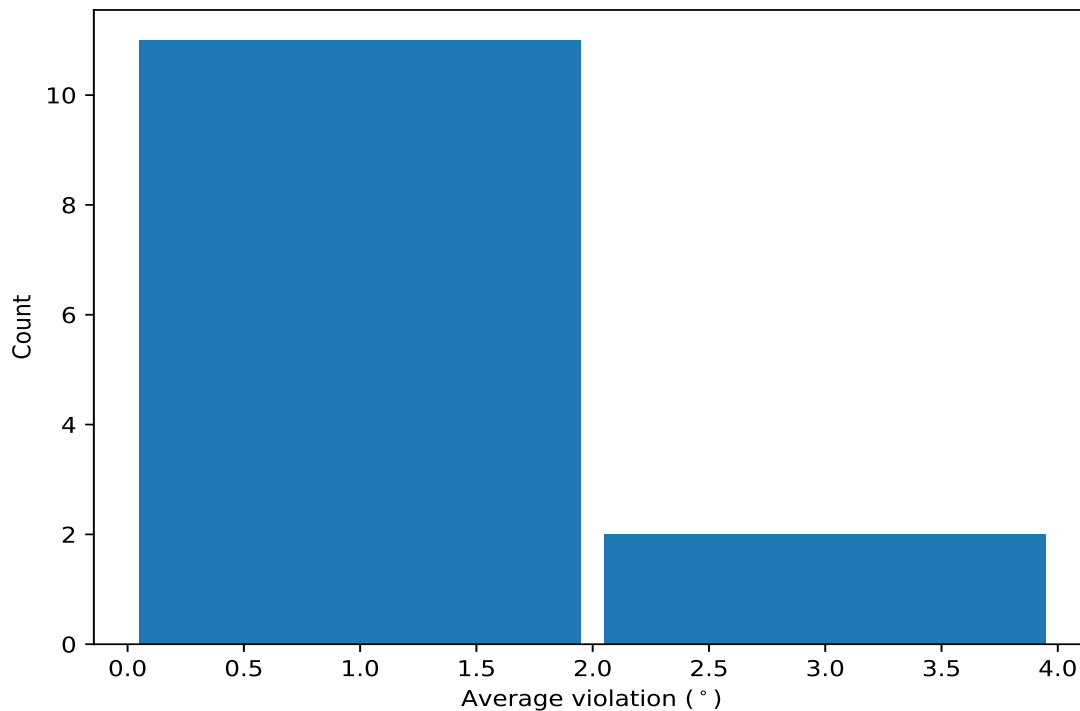


10.4 Most violated dihedral-angle restraints in the ensemble [i](#)

10.4.1 Histogram : Distribution of mean dihedral-angle violations [i](#)

The following histogram shows the distribution of the average value of the violation. The average is calculated for each restraint that is violated in more than one model over all the violated models

in the ensemble



10.4.2 Table: Most violated dihedral-angle restraints [i](#)

The following table provides the mean and the standard deviation of the violation for each restraint sorted by number of violated models and the mean value. The Key (restraint list ID, restraint ID) is the unique identifier for a given restraint.

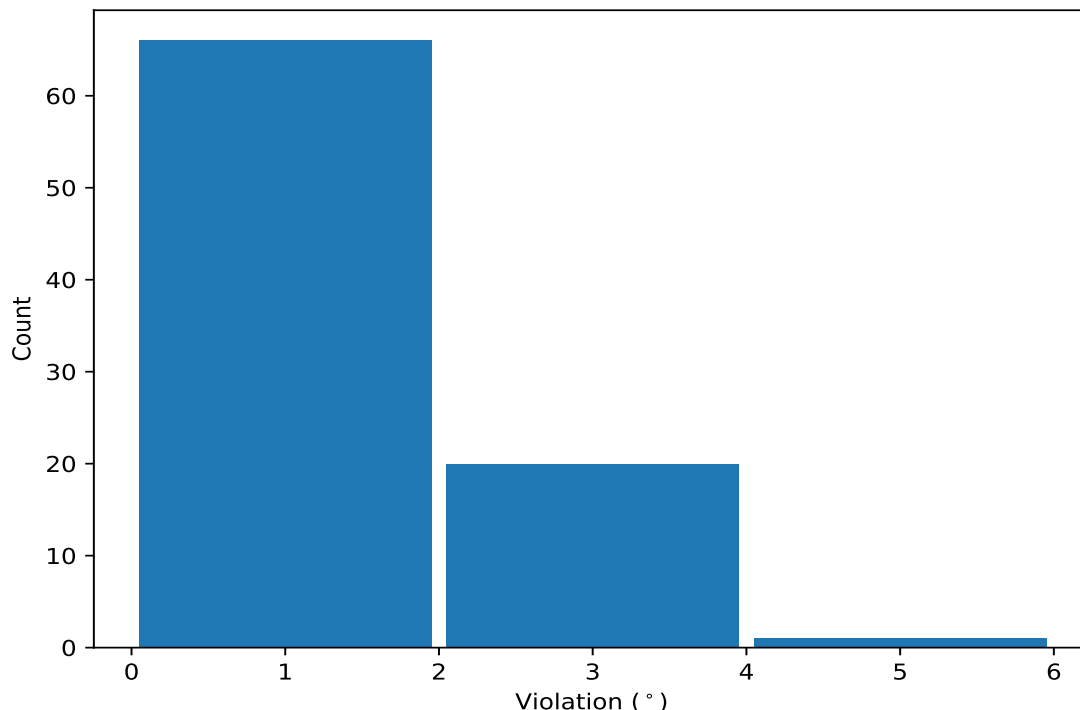
Key	Atom-1	Atom-2	Atom-3	Atom-4	Models ¹	Mean	SD ²	Median
(1,80)	1:75:A:GLN:N	1:75:A:GLN:CA	1:75:A:GLN:C	1:76:A:GLU:N	18	2.43	0.83	2.37
(1,39)	1:45:A:ALA:C	1:46:A:SER:N	1:46:A:SER:CA	1:46:A:SER:C	12	1.35	0.22	1.36
(1,58)	1:60:A:SER:N	1:60:A:SER:CA	1:60:A:SER:C	1:61:A:HIS:N	8	1.83	0.33	1.84
(1,59)	1:60:A:SER:C	1:61:A:HIS:N	1:61:A:HIS:CA	1:61:A:HIS:C	7	1.57	0.35	1.5
(1,76)	1:73:A:LYS:N	1:73:A:LYS:CA	1:73:A:LYS:C	1:74:A:ALA:N	5	1.65	0.26	1.69
(1,14)	1:21:A:ARG:N	1:21:A:ARG:CA	1:21:A:ARG:C	1:22:A:ALA:N	5	1.38	0.32	1.23
(1,20)	1:26:A:GLY:N	1:26:A:GLY:CA	1:26:A:GLY:C	1:27:A:GLY:N	4	1.97	0.72	1.9
(1,1)	1:14:A:GLU:C	1:15:A:LEU:N	1:15:A:LEU:CA	1:15:A:LEU:C	4	1.11	0.09	1.1
(1,16)	1:22:A:ALA:N	1:22:A:ALA:CA	1:22:A:ALA:C	1:23:A:GLN:N	4	1.11	0.07	1.08
(1,19)	1:25:A:ALA:C	1:26:A:GLY:N	1:26:A:GLY:CA	1:26:A:GLY:C	3	2.69	0.86	2.13
(1,81)	1:78:A:ARG:C	1:79:A:SER:N	1:79:A:SER:CA	1:79:A:SER:C	3	1.39	0.32	1.31
(1,77)	1:73:A:LYS:C	1:74:A:ALA:N	1:74:A:ALA:CA	1:74:A:ALA:C	3	1.28	0.36	1.03
(1,18)	1:25:A:ALA:N	1:25:A:ALA:CA	1:25:A:ALA:C	1:26:A:GLY:N	3	1.19	0.12	1.26

¹ Number of violated models, ²Standard deviation, All angle values are in degree (°)

10.5 All violated dihedral-angle restraints [i](#)

10.5.1 Histogram : Distribution of violations [i](#)

The following histogram shows the distribution of the absolute value of the violation for all violated restraints in the ensemble.



10.5.2 Table: All violated dihedral-angle restraints [i](#)

The following table lists the absolute value of the violation for each restraint in the ensemble sorted by its value. The Key (restraint list ID, restraint ID) is the unique identifier for a given restraint.

Key	Atom-1	Atom-2	Atom-3	Atom-4	Model ID	Violation (°)
(1,80)	1:75:A:GLN:N	1:75:A:GLN:CA	1:75:A:GLN:C	1:76:A:GLU:N	8	4.12
(1,19)	1:25:A:ALA:C	1:26:A:GLY:N	1:26:A:GLY:CA	1:26:A:GLY:C	10	3.91
(1,80)	1:75:A:GLN:N	1:75:A:GLN:CA	1:75:A:GLN:C	1:76:A:GLU:N	13	3.68
(1,80)	1:75:A:GLN:N	1:75:A:GLN:CA	1:75:A:GLN:C	1:76:A:GLU:N	10	3.59
(1,80)	1:75:A:GLN:N	1:75:A:GLN:CA	1:75:A:GLN:C	1:76:A:GLU:N	2	3.22
(1,80)	1:75:A:GLN:N	1:75:A:GLN:CA	1:75:A:GLN:C	1:76:A:GLU:N	5	3.15
(1,20)	1:26:A:GLY:N	1:26:A:GLY:CA	1:26:A:GLY:C	1:27:A:GLY:N	20	3.02
(1,80)	1:75:A:GLN:N	1:75:A:GLN:CA	1:75:A:GLN:C	1:76:A:GLU:N	1	2.73
(1,80)	1:75:A:GLN:N	1:75:A:GLN:CA	1:75:A:GLN:C	1:76:A:GLU:N	11	2.73
(1,80)	1:75:A:GLN:N	1:75:A:GLN:CA	1:75:A:GLN:C	1:76:A:GLU:N	6	2.56
(1,80)	1:75:A:GLN:N	1:75:A:GLN:CA	1:75:A:GLN:C	1:76:A:GLU:N	18	2.45
(1,58)	1:60:A:SER:N	1:60:A:SER:CA	1:60:A:SER:C	1:61:A:HIS:N	13	2.36
(1,80)	1:75:A:GLN:N	1:75:A:GLN:CA	1:75:A:GLN:C	1:76:A:GLU:N	12	2.28
(1,59)	1:60:A:SER:C	1:61:A:HIS:N	1:61:A:HIS:CA	1:61:A:HIS:C	5	2.21

Continued on next page...

Continued from previous page...

Key	Atom-1	Atom-2	Atom-3	Atom-4	Model ID	Violation (°)
(1,58)	1:60:A:SER:N	1:60:A:SER:CA	1:60:A:SER:C	1:61:A:HIS:N	5	2.16
(1,20)	1:26:A:GLY:N	1:26:A:GLY:CA	1:26:A:GLY:C	1:27:A:GLY:N	3	2.16
(1,19)	1:25:A:ALA:C	1:26:A:GLY:N	1:26:A:GLY:CA	1:26:A:GLY:C	13	2.13
(1,80)	1:75:A:GLN:N	1:75:A:GLN:CA	1:75:A:GLN:C	1:76:A:GLU:N	14	2.12
(1,19)	1:25:A:ALA:C	1:26:A:GLY:N	1:26:A:GLY:CA	1:26:A:GLY:C	12	2.03
(1,4)	1:16:A:GLU:N	1:16:A:GLU:CA	1:16:A:GLU:C	1:17:A:ILE:N	3	2.02
(1,58)	1:60:A:SER:N	1:60:A:SER:CA	1:60:A:SER:C	1:61:A:HIS:N	20	2.01
(1,80)	1:75:A:GLN:N	1:75:A:GLN:CA	1:75:A:GLN:C	1:76:A:GLU:N	3	1.98
(1,76)	1:73:A:LYS:N	1:73:A:LYS:CA	1:73:A:LYS:C	1:74:A:ALA:N	9	1.95
(1,58)	1:60:A:SER:N	1:60:A:SER:CA	1:60:A:SER:C	1:61:A:HIS:N	19	1.94
(1,14)	1:21:A:ARG:N	1:21:A:ARG:CA	1:21:A:ARG:C	1:22:A:ALA:N	3	1.91
(1,76)	1:73:A:LYS:N	1:73:A:LYS:CA	1:73:A:LYS:C	1:74:A:ALA:N	14	1.9
(1,59)	1:60:A:SER:C	1:61:A:HIS:N	1:61:A:HIS:CA	1:61:A:HIS:C	20	1.9
(1,81)	1:78:A:ARG:C	1:79:A:SER:N	1:79:A:SER:CA	1:79:A:SER:C	3	1.81
(1,77)	1:73:A:LYS:C	1:74:A:ALA:N	1:74:A:ALA:CA	1:74:A:ALA:C	16	1.79
(1,63)	1:63:A:LEU:C	1:64:A:ILE:N	1:64:A:ILE:CA	1:64:A:ILE:C	14	1.78
(1,58)	1:60:A:SER:N	1:60:A:SER:CA	1:60:A:SER:C	1:61:A:HIS:N	2	1.73
(1,39)	1:45:A:ALA:C	1:46:A:SER:N	1:46:A:SER:CA	1:46:A:SER:C	18	1.7
(1,80)	1:75:A:GLN:N	1:75:A:GLN:CA	1:75:A:GLN:C	1:76:A:GLU:N	17	1.69
(1,76)	1:73:A:LYS:N	1:73:A:LYS:CA	1:73:A:LYS:C	1:74:A:ALA:N	8	1.69
(1,20)	1:26:A:GLY:N	1:26:A:GLY:CA	1:26:A:GLY:C	1:27:A:GLY:N	2	1.64
(1,15)	1:21:A:ARG:C	1:22:A:ALA:N	1:22:A:ALA:CA	1:22:A:ALA:C	4	1.64
(1,58)	1:60:A:SER:N	1:60:A:SER:CA	1:60:A:SER:C	1:61:A:HIS:N	7	1.63
(1,39)	1:45:A:ALA:C	1:46:A:SER:N	1:46:A:SER:CA	1:46:A:SER:C	8	1.63
(1,39)	1:45:A:ALA:C	1:46:A:SER:N	1:46:A:SER:CA	1:46:A:SER:C	6	1.61
(1,80)	1:75:A:GLN:N	1:75:A:GLN:CA	1:75:A:GLN:C	1:76:A:GLU:N	15	1.59
(1,14)	1:21:A:ARG:N	1:21:A:ARG:CA	1:21:A:ARG:C	1:22:A:ALA:N	1	1.57
(1,80)	1:75:A:GLN:N	1:75:A:GLN:CA	1:75:A:GLN:C	1:76:A:GLU:N	9	1.55
(1,80)	1:75:A:GLN:N	1:75:A:GLN:CA	1:75:A:GLN:C	1:76:A:GLU:N	19	1.55
(1,80)	1:75:A:GLN:N	1:75:A:GLN:CA	1:75:A:GLN:C	1:76:A:GLU:N	20	1.51
(1,59)	1:60:A:SER:C	1:61:A:HIS:N	1:61:A:HIS:CA	1:61:A:HIS:C	11	1.5
(1,59)	1:60:A:SER:C	1:61:A:HIS:N	1:61:A:HIS:CA	1:61:A:HIS:C	17	1.5
(1,58)	1:60:A:SER:N	1:60:A:SER:CA	1:60:A:SER:C	1:61:A:HIS:N	4	1.5
(1,82)	1:79:A:SER:N	1:79:A:SER:CA	1:79:A:SER:C	1:80:A:GLN:N	3	1.47
(1,59)	1:60:A:SER:C	1:61:A:HIS:N	1:61:A:HIS:CA	1:61:A:HIS:C	19	1.47
(1,39)	1:45:A:ALA:C	1:46:A:SER:N	1:46:A:SER:CA	1:46:A:SER:C	10	1.46
(1,39)	1:45:A:ALA:C	1:46:A:SER:N	1:46:A:SER:CA	1:46:A:SER:C	11	1.44
(1,39)	1:45:A:ALA:C	1:46:A:SER:N	1:46:A:SER:CA	1:46:A:SER:C	7	1.42
(1,76)	1:73:A:LYS:N	1:73:A:LYS:CA	1:73:A:LYS:C	1:74:A:ALA:N	12	1.38
(1,59)	1:60:A:SER:C	1:61:A:HIS:N	1:61:A:HIS:CA	1:61:A:HIS:C	10	1.35
(1,80)	1:75:A:GLN:N	1:75:A:GLN:CA	1:75:A:GLN:C	1:76:A:GLU:N	4	1.33
(1,76)	1:73:A:LYS:N	1:73:A:LYS:CA	1:73:A:LYS:C	1:74:A:ALA:N	20	1.33
(1,61)	1:62:A:HIS:C	1:63:A:LEU:N	1:63:A:LEU:CA	1:63:A:LEU:C	13	1.33
(1,81)	1:78:A:ARG:C	1:79:A:SER:N	1:79:A:SER:CA	1:79:A:SER:C	5	1.31
(1,21)	1:35:A:THR:C	1:36:A:ALA:N	1:36:A:ALA:CA	1:36:A:ALA:C	9	1.31
(1,39)	1:45:A:ALA:C	1:46:A:SER:N	1:46:A:SER:CA	1:46:A:SER:C	15	1.3
(1,58)	1:60:A:SER:N	1:60:A:SER:CA	1:60:A:SER:C	1:61:A:HIS:N	8	1.28
(1,18)	1:25:A:ALA:N	1:25:A:ALA:CA	1:25:A:ALA:C	1:26:A:GLY:N	16	1.28
(1,39)	1:45:A:ALA:C	1:46:A:SER:N	1:46:A:SER:CA	1:46:A:SER:C	16	1.27
(1,18)	1:25:A:ALA:N	1:25:A:ALA:CA	1:25:A:ALA:C	1:26:A:GLY:N	4	1.26
(1,39)	1:45:A:ALA:C	1:46:A:SER:N	1:46:A:SER:CA	1:46:A:SER:C	14	1.25

Continued on next page...

Continued from previous page...

Key	Atom-1	Atom-2	Atom-3	Atom-4	Model ID	Violation (°)
(1,14)	1:21:A:ARG:N	1:21:A:ARG:CA	1:21:A:ARG:C	1:22:A:ALA:N	17	1.23
(1,13)	1:20:A:ILE:C	1:21:A:ARG:N	1:21:A:ARG:CA	1:21:A:ARG:C	10	1.23
(1,1)	1:14:A:GLU:C	1:15:A:LEU:N	1:15:A:LEU:CA	1:15:A:LEU:C	3	1.23
(1,16)	1:22:A:ALA:N	1:22:A:ALA:CA	1:22:A:ALA:C	1:23:A:GLN:N	10	1.22
(1,14)	1:21:A:ARG:N	1:21:A:ARG:CA	1:21:A:ARG:C	1:22:A:ALA:N	19	1.16
(1,1)	1:14:A:GLU:C	1:15:A:LEU:N	1:15:A:LEU:CA	1:15:A:LEU:C	6	1.15
(1,16)	1:22:A:ALA:N	1:22:A:ALA:CA	1:22:A:ALA:C	1:23:A:GLN:N	20	1.11
(1,39)	1:45:A:ALA:C	1:46:A:SER:N	1:46:A:SER:CA	1:46:A:SER:C	20	1.08
(1,59)	1:60:A:SER:C	1:61:A:HIS:N	1:61:A:HIS:CA	1:61:A:HIS:C	15	1.06
(1,20)	1:26:A:GLY:N	1:26:A:GLY:CA	1:26:A:GLY:C	1:27:A:GLY:N	9	1.06
(1,16)	1:22:A:ALA:N	1:22:A:ALA:CA	1:22:A:ALA:C	1:23:A:GLN:N	6	1.06
(1,81)	1:78:A:ARG:C	1:79:A:SER:N	1:79:A:SER:CA	1:79:A:SER:C	20	1.05
(1,1)	1:14:A:GLU:C	1:15:A:LEU:N	1:15:A:LEU:CA	1:15:A:LEU:C	20	1.05
(1,39)	1:45:A:ALA:C	1:46:A:SER:N	1:46:A:SER:CA	1:46:A:SER:C	4	1.04
(1,16)	1:22:A:ALA:N	1:22:A:ALA:CA	1:22:A:ALA:C	1:23:A:GLN:N	2	1.04
(1,77)	1:73:A:LYS:C	1:74:A:ALA:N	1:74:A:ALA:CA	1:74:A:ALA:C	18	1.03
(1,77)	1:73:A:LYS:C	1:74:A:ALA:N	1:74:A:ALA:CA	1:74:A:ALA:C	10	1.02
(1,66)	1:65:A:SER:N	1:65:A:SER:CA	1:65:A:SER:C	1:66:A:SER:N	15	1.02
(1,18)	1:25:A:ALA:N	1:25:A:ALA:CA	1:25:A:ALA:C	1:26:A:GLY:N	13	1.02
(1,14)	1:21:A:ARG:N	1:21:A:ARG:CA	1:21:A:ARG:C	1:22:A:ALA:N	15	1.02
(1,39)	1:45:A:ALA:C	1:46:A:SER:N	1:46:A:SER:CA	1:46:A:SER:C	13	1.01
(1,1)	1:14:A:GLU:C	1:15:A:LEU:N	1:15:A:LEU:CA	1:15:A:LEU:C	2	1.01