



wwPDB X-ray Structure Validation Summary Report ⓘ

Mar 5, 2026 – 06:02 PM UTC

PDB ID : 2R4E / pdb_00002r4e
Title : Crystal structure of Escherichia coli Glycerol-3-phosphate Dehydrogenase in complex with DHAP
Authors : Yeh, J.I.; Du, S.; Chinte, U.
Deposited on : 2007-08-31
Resolution : 2.10 Å (reported)

This is a wwPDB X-ray Structure Validation Summary Report for a publicly released PDB entry.

We welcome your comments at validation@mail.wwpdb.org

A user guide is available at

<https://www.wwpdb.org/validation/2017/XrayValidationReportHelp>

with specific help available everywhere you see the ⓘ symbol.

The types of validation reports are described at

<http://www.wwpdb.org/validation/2017/FAQs#types>.

The following versions of software and data (see [references ⓘ](#)) were used in the production of this report:

MolProbity : 4-5-2 with Phenix2.0
Mogul : 2022.3.0, CSD as543be (2022)
Xtrriage (Phenix) : 2.0
EDS : 3.0
Buster-report : wwPDB partial adaption of 1.1.7 (2018)
Percentile statistics : 20250101.v01 (using entries in the PDB archive January 1st 2025)
CCP4 : 9.0.010 (Gargrove)
Density-Fitness : 1.0.12
Ideal geometry (proteins) : Engh & Huber (2001)
Ideal geometry (DNA, RNA) : Parkinson et al. (1996)
Validation Pipeline (wwPDB-VP) : 2.49

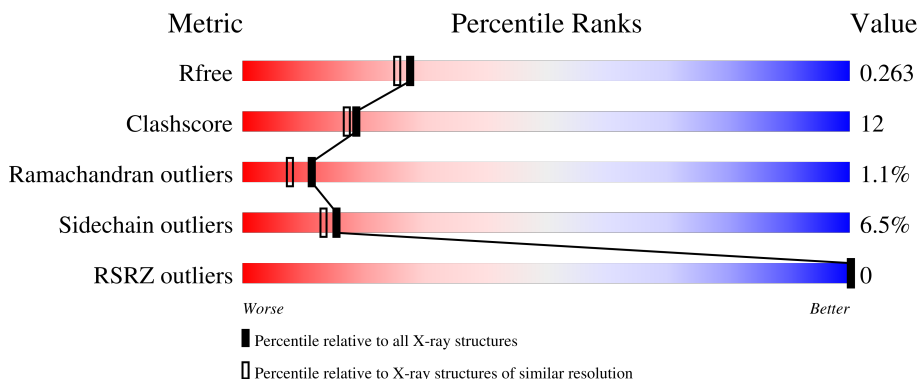
1 Overall quality at a glance

The following experimental techniques were used to determine the structure:

X-RAY DIFFRACTION



The reported resolution of this entry is 2.10 Å.

Percentile scores (ranging between 0-100) for global validation metrics of the entry are shown in the following graphic. The table shows the number of entries on which the scores are based.



Metric	Whole archive (#Entries)	Similar resolution (#Entries, resolution range(Å))
R_{free}	180053	6658 (2.10-2.10)
Clashscore	190562	7164 (2.10-2.10)
Ramachandran outliers	187476	7099 (2.10-2.10)
Sidechain outliers	187428	7100 (2.10-2.10)
RSRZ outliers	180081	6662 (2.10-2.10)

The table below summarises the geometric issues observed across the polymeric chains and their fit to the electron density. The red, orange, yellow and green segments of the lower bar indicate the fraction of residues that contain outliers for ≥ 3 , 2, 1 and 0 types of geometric quality criteria respectively. A grey segment represents the fraction of residues that are not modelled. The numeric value for each fraction is indicated below the corresponding segment, with a dot representing fractions $\leq 5\%$. The upper red bar (where present) indicates the fraction of residues that have poor fit to the electron density. The numeric value is given above the bar.

Mol	Chain	Length	Quality of chain
1	A	501	 77% 18% ..
1	B	501	 74% 19% . ..

The following table lists non-polymeric compounds, carbohydrate monomers and non-standard residues in protein, DNA, RNA chains that are outliers for geometric or electron-density-fit criteria:

Mol	Type	Chain	Res	Chirality	Geometry	Clashes	Electron density
4	FAD	A	600	X	-	-	-
5	13P	A	1955	-	X	-	-
5	13P	B	7067	-	X	X	-

2 Entry composition [i](#)

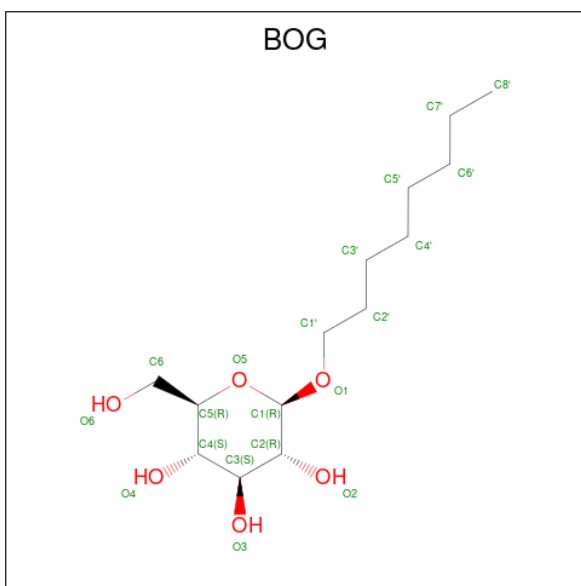
There are 9 unique types of molecules in this entry. The entry contains 8532 atoms, of which 0 are hydrogens and 0 are deuteriums.

In the tables below, the ZeroOcc column contains the number of atoms modelled with zero occupancy, the AltConf column contains the number of residues with at least one atom in alternate conformation and the Trace column contains the number of residues modelled with at most 2 atoms.

- Molecule 1 is a protein called Aerobic glycerol-3-phosphate dehydrogenase.

Mol	Chain	Residues	Atoms					ZeroOcc	AltConf	Trace
			Total	C	N	O	S			
1	A	494	Total 3953	C 2510	N 703	O 727	S 13	0	0	0
1	B	494	Total 3953	C 2510	N 703	O 727	S 13	0	0	0

- Molecule 2 is octyl beta-D-glucopyranoside (CCD ID: BOG) (formula: C₁₄H₂₈O₆).



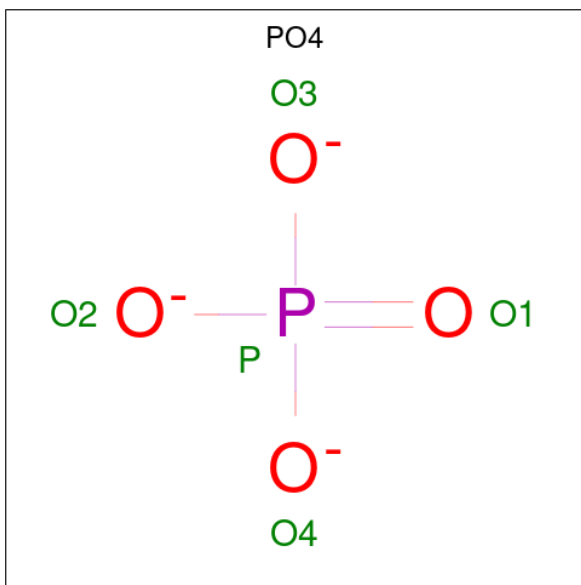
Mol	Chain	Residues	Atoms			ZeroOcc	AltConf
			Total	C	O		
2	A	1	Total 20	C 14	O 6	0	0
2	A	1	Total 20	C 14	O 6	0	0
2	A	1	Total 20	C 14	O 6	0	0
2	A	1	Total 20	C 14	O 6	0	0

Continued on next page...

Continued from previous page...

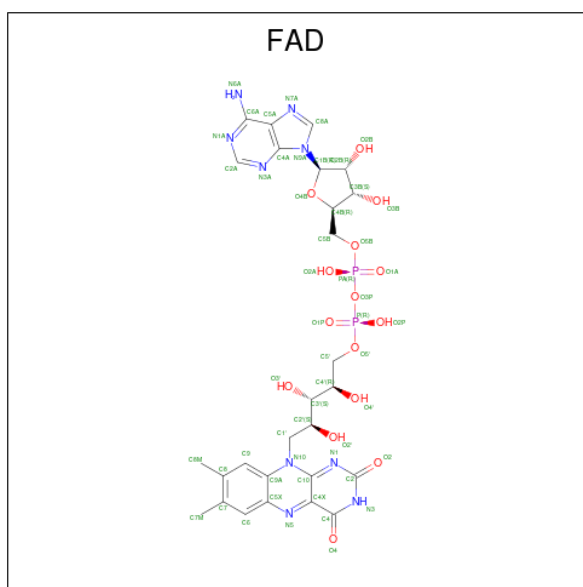
Mol	Chain	Residues	Atoms			ZeroOcc	AltConf
2	B	1	Total	C	O	0	0
			20	14	6		
2	B	1	Total	C	O	0	0
			20	14	6		

- Molecule 3 is PHOSPHATE ION (CCD ID: PO4) (formula: O₄P).



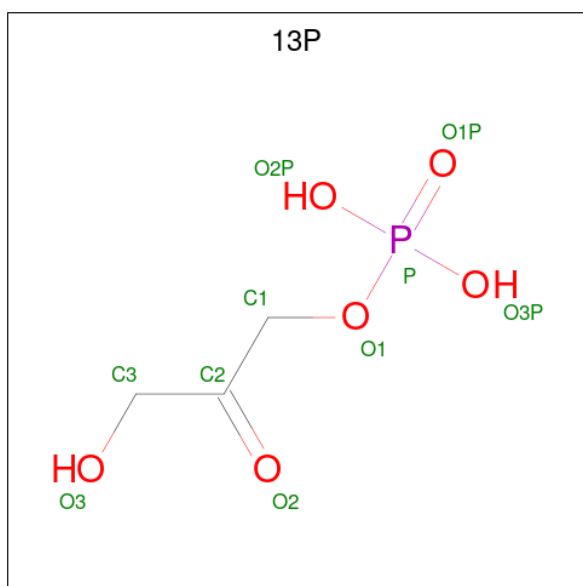
Mol	Chain	Residues	Atoms			ZeroOcc	AltConf
3	A	1	Total	O	P	0	0
			5	4	1		
3	A	1	Total	O	P	0	0
			5	4	1		
3	B	1	Total	O	P	0	0
			5	4	1		
3	B	1	Total	O	P	0	0
			5	4	1		
3	B	1	Total	O	P	0	0
			5	4	1		

- Molecule 4 is FLAVIN-ADENINE DINUCLEOTIDE (CCD ID: FAD) (formula: C₂₇H₃₃N₉O₁₅P₂).



Mol	Chain	Residues	Atoms				ZeroOcc	AltConf	
			Total	C	N	O			P
4	A	1	53	27	9	15	2	0	0
4	B	1	53	27	9	15	2	0	0

- Molecule 5 is 1,3-DIHYDROXYACETONEPHOSPHATE (CCD ID: 13P) (formula: $C_3H_7O_6P$).



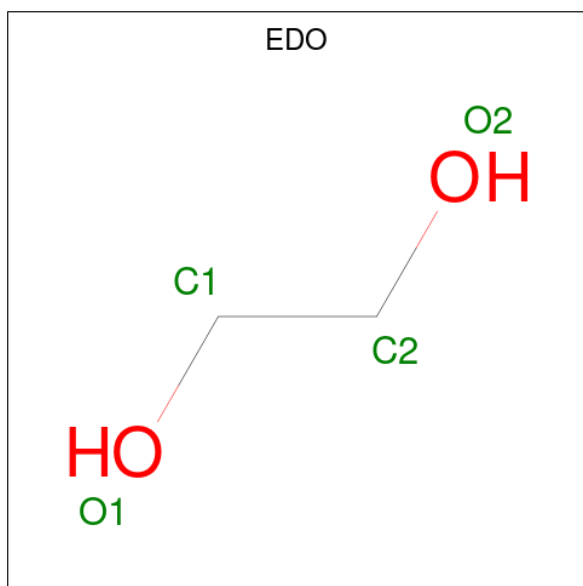
Mol	Chain	Residues	Atoms				ZeroOcc	AltConf
			Total	C	O	P		
5	A	1	10	3	6	1	0	0

Continued on next page...

Continued from previous page...

Mol	Chain	Residues	Atoms				ZeroOcc	AltConf
			Total	C	O	P		
5	B	1	10	3	6	1	0	0

- Molecule 6 is 1,2-ETHANEDIOL (CCD ID: EDO) (formula: C₂H₆O₂).



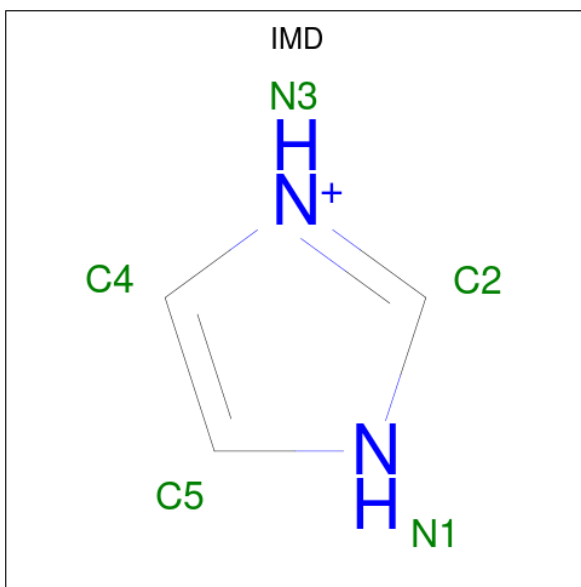
Mol	Chain	Residues	Atoms			ZeroOcc	AltConf
			Total	C	O		
6	A	1	4	2	2	0	0
6	A	1	4	2	2	0	0
6	A	1	4	2	2	0	0
6	A	1	4	2	2	0	0
6	A	1	4	2	2	0	0
6	A	1	4	2	2	0	0
6	B	1	4	2	2	0	0
6	B	1	4	2	2	0	0
6	B	1	4	2	2	0	0
6	B	1	4	2	2	0	0

Continued on next page...

Continued from previous page...

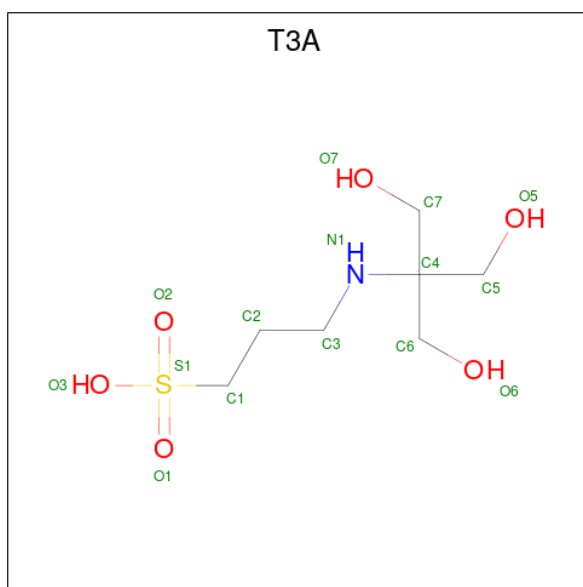
Mol	Chain	Residues	Atoms			ZeroOcc	AltConf
6	B	1	Total	C	O	0	0
			4	2	2		
6	B	1	Total	C	O	0	0
			4	2	2		
6	B	1	Total	C	O	0	0
			4	2	2		

- Molecule 7 is IMIDAZOLE (CCD ID: IMD) (formula: C₃H₅N₂).



Mol	Chain	Residues	Atoms			ZeroOcc	AltConf
7	A	1	Total	C	N	0	0
			5	3	2		
7	B	1	Total	C	N	0	0
			5	3	2		

- Molecule 8 is N-(TRIS(HYDROXYMETHYL)METHYL)-3-AMINOPROPANESULFONIC ACID (CCD ID: T3A) (formula: C₇H₁₇NO₆S).



Mol	Chain	Residues	Atoms					ZeroOcc	AltConf
			Total	C	N	O	S		
8	A	1	15	7	1	6	1	0	0
8	B	1	15	7	1	6	1	0	0

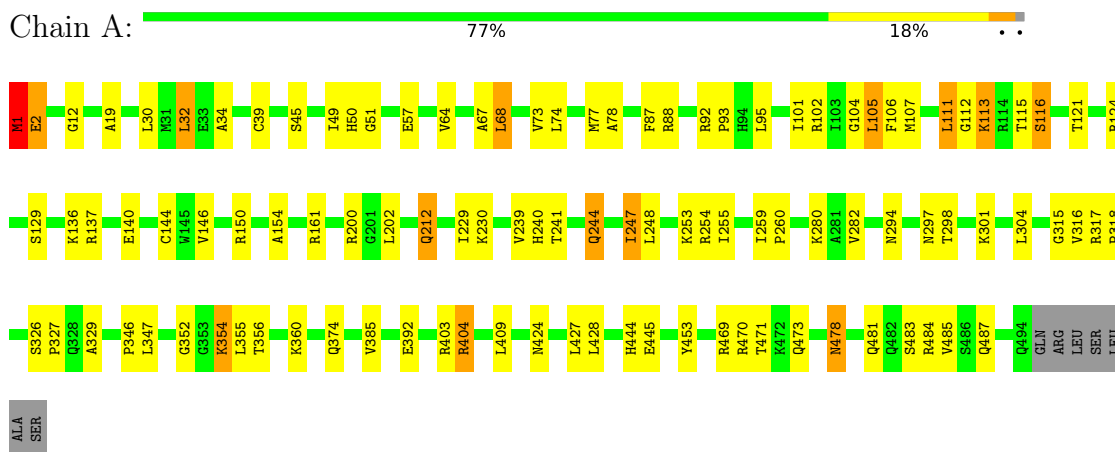
- Molecule 9 is water.

Mol	Chain	Residues	Atoms		ZeroOcc	AltConf
			Total	O		
9	A	131	131	131	0	0
9	B	132	132	132	0	0

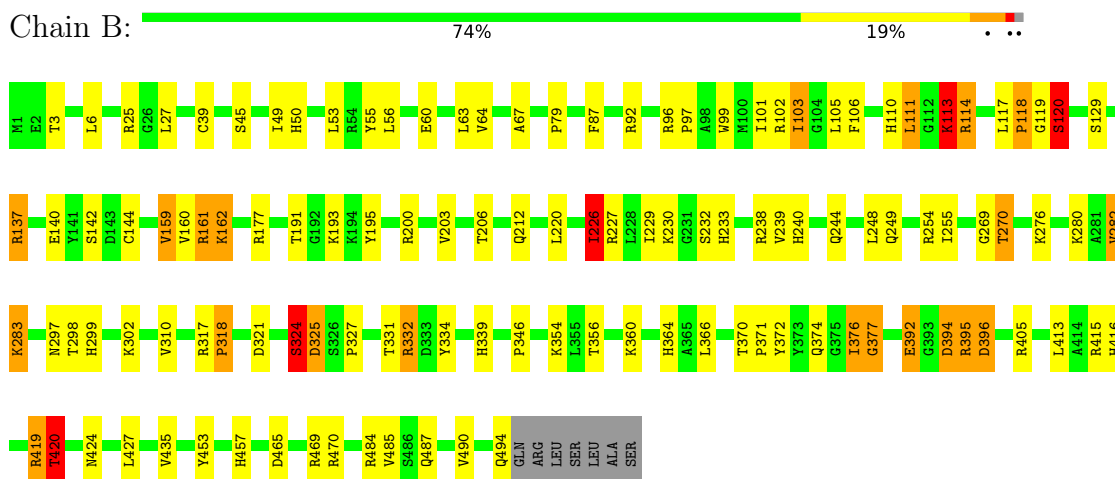
3 Residue-property plots [i](#)

These plots are drawn for all protein, RNA, DNA and oligosaccharide chains in the entry. The first graphic for a chain summarises the proportions of the various outlier classes displayed in the second graphic. The second graphic shows the sequence view annotated by issues in geometry and electron density. Residues are color-coded according to the number of geometric quality criteria for which they contain at least one outlier: green = 0, yellow = 1, orange = 2 and red = 3 or more. A red dot above a residue indicates a poor fit to the electron density ($RSRZ > 2$). Stretches of 2 or more consecutive residues without any outlier are shown as a green connector. Residues present in the sample, but not in the model, are shown in grey.

- Molecule 1: Aerobic glycerol-3-phosphate dehydrogenase



- Molecule 1: Aerobic glycerol-3-phosphate dehydrogenase



4 Data and refinement statistics i

Property	Value	Source
Space group	I 2 2 2	Depositor
Cell constants a, b, c, α , β , γ	113.85Å 113.82Å 193.13Å 90.00° 90.00° 90.00°	Depositor
Resolution (Å)	10.00 – 2.10 10.00 – 2.10	Depositor EDS
% Data completeness (in resolution range)	99.9 (10.00-2.10) 99.8 (10.00-2.10)	Depositor EDS
R_{merge}	0.08	Depositor
R_{sym}	(Not available)	Depositor
$\langle I/\sigma(I) \rangle$ ¹	2.47 (at 2.06Å)	Xtrriage
Refinement program	REFMAC	Depositor
R, R_{free}	0.198 , 0.256 0.205 , 0.263	Depositor DCC
R_{free} test set	3882 reflections (4.99%)	wwPDB-VP
Wilson B-factor (Å ²)	32.3	Xtrriage
Anisotropy	0.042	Xtrriage
Bulk solvent k_{sol} (e/Å ³), B_{sol} (Å ²)	0.38 , 30.2	EDS
L-test for twinning ²	$\langle L \rangle = 0.49$, $\langle L^2 \rangle = 0.32$	Xtrriage
Estimated twinning fraction	0.470 for k,h,-l	Xtrriage
F_o, F_c correlation	0.97	EDS
Total number of atoms	8532	wwPDB-VP
Average B, all atoms (Å ²)	34.0	wwPDB-VP

Xtrriage's analysis on translational NCS is as follows: *The largest off-origin peak in the Patterson function is 4.60% of the height of the origin peak. No significant pseudotranslation is detected.*

¹Intensities estimated from amplitudes.

²Theoretical values of $\langle |L| \rangle$, $\langle L^2 \rangle$ for acentric reflections are 0.5, 0.333 respectively for untwinned datasets, and 0.375, 0.2 for perfectly twinned datasets.

5 Model quality [i](#)

5.1 Standard geometry [i](#)

Bond lengths and bond angles in the following residue types are not validated in this section: 13P, T3A, IMD, PO4, EDO, FAD, BOG

The Z score for a bond length (or angle) is the number of standard deviations the observed value is removed from the expected value. A bond length (or angle) with $|Z| > 5$ is considered an outlier worth inspection. RMSZ is the root-mean-square of all Z scores of the bond lengths (or angles).

Mol	Chain	Bond lengths		Bond angles	
		RMSZ	# Z >5	RMSZ	# Z >5
1	A	1.31	8/4048 (0.2%)	1.15	4/5482 (0.1%)
1	B	1.31	7/4048 (0.2%)	1.21	16/5482 (0.3%)
All	All	1.31	15/8096 (0.2%)	1.18	20/10964 (0.2%)

The worst 5 of 15 bond length outliers are listed below:

Mol	Chain	Res	Type	Atoms	Z	Observed(Å)	Ideal(Å)
1	A	485	VAL	CA-CB	6.85	1.63	1.54
1	A	316	VAL	CA-CB	6.38	1.62	1.54
1	A	329	ALA	CA-CB	5.92	1.64	1.53
1	B	282	VAL	CA-CB	5.87	1.60	1.54
1	B	120	SER	CA-C	-5.83	1.45	1.52

The worst 5 of 20 bond angle outliers are listed below:

Mol	Chain	Res	Type	Atoms	Z	Observed(°)	Ideal(°)
1	B	324	SER	N-CA-C	9.86	121.62	111.07
1	B	226	ILE	N-CA-C	6.67	123.21	109.34
1	B	113	LYS	N-CA-C	6.65	124.97	110.80
1	B	420	THR	CB-CA-C	6.48	121.06	110.83
1	B	103	ILE	CB-CA-C	-6.44	103.61	112.24

There are no chirality outliers.

There are no planarity outliers.

5.2 Too-close contacts [i](#)

In the following table, the Non-H and H(model) columns list the number of non-hydrogen atoms and hydrogen atoms in the chain respectively. The H(added) column lists the number of hydrogen

atoms added and optimized by MolProbity. The Clashes column lists the number of clashes within the asymmetric unit, whereas Symm-Clashes lists symmetry-related clashes.

Mol	Chain	Non-H	H(model)	H(added)	Clashes	Symm-Clashes
1	A	3953	0	3903	81	0
1	B	3953	0	3903	109	0
2	A	80	0	112	13	0
2	B	40	0	56	3	0
3	A	10	0	0	1	0
3	B	15	0	0	2	0
4	A	53	0	29	8	0
4	B	53	0	30	7	0
5	A	10	0	5	3	0
5	B	10	0	5	4	0
6	A	24	0	36	4	0
6	B	28	0	42	4	0
7	A	5	0	5	1	0
7	B	5	0	5	0	0
8	A	15	0	17	1	0
8	B	15	0	17	1	0
9	A	131	0	0	5	0
9	B	132	0	0	7	0
All	All	8532	0	8165	195	0

The all-atom clashscore is defined as the number of clashes found per 1000 atoms (including hydrogen atoms). The all-atom clashscore for this structure is 12.

The worst 5 of 195 close contacts within the same asymmetric unit are listed below, sorted by their clash magnitude.

Atom-1	Atom-2	Interatomic distance (Å)	Clash overlap (Å)
1:A:51:GLY:HA3	1:A:68:LEU:HD13	1.30	1.10
1:B:395:ARG:O	1:B:396:ASP:HB2	1.54	1.05
1:B:484:ARG:NH1	1:B:487:GLN:HE21	1.54	1.04
1:B:50:HIS:HE1	1:B:354:LYS:NZ	1.58	1.01
1:B:50:HIS:CE1	1:B:354:LYS:NZ	2.30	1.00

There are no symmetry-related clashes.

5.3 Torsion angles [i](#)

5.3.1 Protein backbone [i](#)

In the following table, the Percentiles column shows the percent Ramachandran outliers of the chain as a percentile score with respect to all X-ray entries followed by that with respect to entries of similar resolution.

The Analysed column shows the number of residues for which the backbone conformation was analysed, and the total number of residues.

Mol	Chain	Analysed	Favoured	Allowed	Outliers	Percentiles	
1	A	492/501 (98%)	471 (96%)	18 (4%)	3 (1%)	21	18
1	B	492/501 (98%)	462 (94%)	22 (4%)	8 (2%)	7	4
All	All	984/1002 (98%)	933 (95%)	40 (4%)	11 (1%)	11	8

5 of 11 Ramachandran outliers are listed below:

Mol	Chain	Res	Type
1	A	115	THR
1	A	374	GLN
1	B	113	LYS
1	B	118	PRO
1	B	325	ASP

5.3.2 Protein sidechains [i](#)

In the following table, the Percentiles column shows the percent sidechain outliers of the chain as a percentile score with respect to all X-ray entries followed by that with respect to entries of similar resolution.

The Analysed column shows the number of residues for which the sidechain conformation was analysed, and the total number of residues.

Mol	Chain	Analysed	Rotameric	Outliers	Percentiles	
1	A	413/419 (99%)	389 (94%)	24 (6%)	18	16
1	B	413/419 (99%)	383 (93%)	30 (7%)	13	10
All	All	826/838 (99%)	772 (94%)	54 (6%)	15	13

5 of 54 residues with a non-rotameric sidechain are listed below:

Mol	Chain	Res	Type
1	B	105	LEU

Continued on next page...

Continued from previous page...

Mol	Chain	Res	Type
1	B	226	ILE
1	B	394	ASP
1	B	111	LEU
1	B	160	VAL

Sometimes sidechains can be flipped to improve hydrogen bonding and reduce clashes. 5 of 26 such sidechains are listed below:

Mol	Chain	Res	Type
1	B	155	ASN
1	B	249	GLN
1	B	487	GLN
1	B	244	GLN
1	B	290	ASN

5.3.3 RNA [i](#)

There are no RNA molecules in this entry.

5.4 Non-standard residues in protein, DNA, RNA chains [i](#)

There are no non-standard protein/DNA/RNA residues in this entry.

5.5 Carbohydrates [i](#)

There are no oligosaccharides in this entry.

5.6 Ligand geometry [i](#)

32 ligands are modelled in this entry.

In the following table, the Counts columns list the number of bonds (or angles) for which Mogul statistics could be retrieved, the number of bonds (or angles) that are observed in the model and the number of bonds (or angles) that are defined in the Chemical Component Dictionary. The Link column lists molecule types, if any, to which the group is linked. The Z score for a bond length (or angle) is the number of standard deviations the observed value is removed from the expected value. A bond length (or angle) with $|Z| > 2$ is considered an outlier worth inspection. RMSZ is the root-mean-square of all Z scores of the bond lengths (or angles).

Mol	Type	Chain	Res	Link	Bond lengths			Bond angles		
					Counts	RMSZ	# Z > 2	Counts	RMSZ	# Z > 2
6	EDO	B	1954	-	3,3,3	0.73	0	2,2,2	1.47	1 (50%)
6	EDO	B	1956	-	3,3,3	0.46	0	2,2,2	0.25	0
6	EDO	B	1958	-	3,3,3	0.84	0	2,2,2	0.49	0
2	BOG	A	1952	-	20,20,20	0.85	1 (5%)	25,25,25	1.23	3 (12%)
2	BOG	B	1949	-	20,20,20	0.92	1 (5%)	25,25,25	1.27	2 (8%)
2	BOG	A	1950	-	20,20,20	0.47	0	25,25,25	0.59	0
6	EDO	A	1962	-	3,3,3	0.84	0	2,2,2	0.70	0
3	PO4	B	1952	-	4,4,4	0.76	0	6,6,6	1.17	1 (16%)
8	T3A	A	7066	-	14,14,14	2.42	1 (7%)	19,19,19	2.12	7 (36%)
3	PO4	A	1953	-	4,4,4	0.85	0	6,6,6	0.49	0
6	EDO	B	1959	-	3,3,3	0.45	0	2,2,2	0.43	0
5	13P	B	7067	-	9,9,9	4.33	6 (66%)	10,12,12	3.70	4 (40%)
2	BOG	B	1950	-	20,20,20	0.61	0	25,25,25	1.30	3 (12%)
6	EDO	A	1956	-	3,3,3	0.68	0	2,2,2	0.41	0
6	EDO	B	1957	-	3,3,3	0.96	0	2,2,2	0.73	0
7	IMD	B	1960	-	5,5,5	0.79	0	5,5,5	0.16	0
2	BOG	A	1949	-	20,20,20	0.99	1 (5%)	25,25,25	1.74	6 (24%)
6	EDO	B	1955	-	3,3,3	0.82	0	2,2,2	1.41	0
6	EDO	A	1961	-	3,3,3	0.62	0	2,2,2	0.58	0
6	EDO	A	1959	-	3,3,3	0.52	0	2,2,2	0.54	0
4	FAD	B	600	-	58,58,58	1.11	5 (8%)	85,89,89	1.86	16 (18%)
6	EDO	A	1960	-	3,3,3	0.50	0	2,2,2	0.09	0
2	BOG	A	1951	-	20,20,20	0.99	1 (5%)	25,25,25	0.92	1 (4%)
7	IMD	A	1957	-	5,5,5	0.77	0	5,5,5	0.44	0
3	PO4	B	1953	-	4,4,4	0.87	0	6,6,6	0.55	0
3	PO4	B	1951	-	4,4,4	1.10	0	6,6,6	0.54	0
5	13P	A	1955	-	9,9,9	4.46	6 (66%)	10,12,12	4.00	4 (40%)
6	EDO	A	1958	-	3,3,3	1.09	0	2,2,2	0.48	0
3	PO4	A	1954	-	4,4,4	0.92	0	6,6,6	0.82	0
6	EDO	B	1961	-	3,3,3	0.70	0	2,2,2	0.74	0
4	FAD	A	600	-	58,58,58	1.45	6 (10%)	85,89,89	1.71	17 (20%)
8	T3A	B	7066	-	14,14,14	2.35	1 (7%)	19,19,19	2.21	9 (47%)

In the following table, the Chirals column lists the number of chiral outliers, the number of chiral centers analysed, the number of these observed in the model and the number defined in the Chemical Component Dictionary. Similar counts are reported in the Torsion and Rings columns. '-' means no outliers of that kind were identified.

Mol	Type	Chain	Res	Link	Chirals	Torsions	Rings
6	EDO	B	1954	-	-	1/1/1/1	-

Continued on next page...

Continued from previous page...

Mol	Type	Chain	Res	Link	Chirals	Torsions	Rings
6	EDO	B	1956	-	-	0/1/1/1	-
6	EDO	B	1958	-	-	0/1/1/1	-
2	BOG	A	1952	-	-	7/11/31/31	0/1/1/1
2	BOG	B	1949	-	-	3/11/31/31	0/1/1/1
2	BOG	A	1950	-	-	7/11/31/31	0/1/1/1
6	EDO	A	1962	-	-	1/1/1/1	-
8	T3A	A	7066	-	-	2/18/18/18	-
6	EDO	B	1959	-	-	1/1/1/1	-
5	13P	B	7067	-	-	7/8/8/8	-
2	BOG	B	1950	-	-	6/11/31/31	0/1/1/1
6	EDO	A	1956	-	-	1/1/1/1	-
6	EDO	B	1957	-	-	1/1/1/1	-
7	IMD	B	1960	-	-	-	0/1/1/1
2	BOG	A	1949	-	-	5/11/31/31	0/1/1/1
6	EDO	B	1955	-	-	1/1/1/1	-
6	EDO	A	1961	-	-	1/1/1/1	-
6	EDO	A	1959	-	-	1/1/1/1	-
4	FAD	B	600	-	-	7/34/50/50	0/6/6/6
6	EDO	A	1960	-	-	1/1/1/1	-
2	BOG	A	1951	-	-	6/11/31/31	0/1/1/1
7	IMD	A	1957	-	-	-	0/1/1/1
5	13P	A	1955	-	-	7/8/8/8	-
6	EDO	A	1958	-	-	1/1/1/1	-
6	EDO	B	1961	-	-	1/1/1/1	-
4	FAD	A	600	-	1/1/9/9	4/34/50/50	0/6/6/6
8	T3A	B	7066	-	-	6/18/18/18	-

The worst 5 of 29 bond length outliers are listed below:

Mol	Chain	Res	Type	Atoms	Z	Observed(Å)	Ideal(Å)
8	A	7066	T3A	C1-S1	-8.38	1.65	1.77
5	B	7067	13P	O1-C1	8.37	1.51	1.43
8	B	7066	T3A	C1-S1	-8.34	1.65	1.77
5	A	1955	13P	O1-C1	8.01	1.51	1.43
4	A	600	FAD	O2B-C2B	-7.20	1.25	1.43

The worst 5 of 74 bond angle outliers are listed below:

Mol	Chain	Res	Type	Atoms	Z	Observed(°)	Ideal(°)
4	B	600	FAD	O2B-C2B-C3B	9.23	141.40	111.82
5	A	1955	13P	O3P-P-O1	-8.89	83.49	106.67
5	B	7067	13P	O3P-P-O1	-8.02	85.75	106.67
5	B	7067	13P	O2P-P-O1	6.44	123.47	106.67
5	A	1955	13P	O2P-P-O1	6.28	123.04	106.67

All (1) chirality outliers are listed below:

Mol	Chain	Res	Type	Atom
4	A	600	FAD	C2B

5 of 78 torsion outliers are listed below:

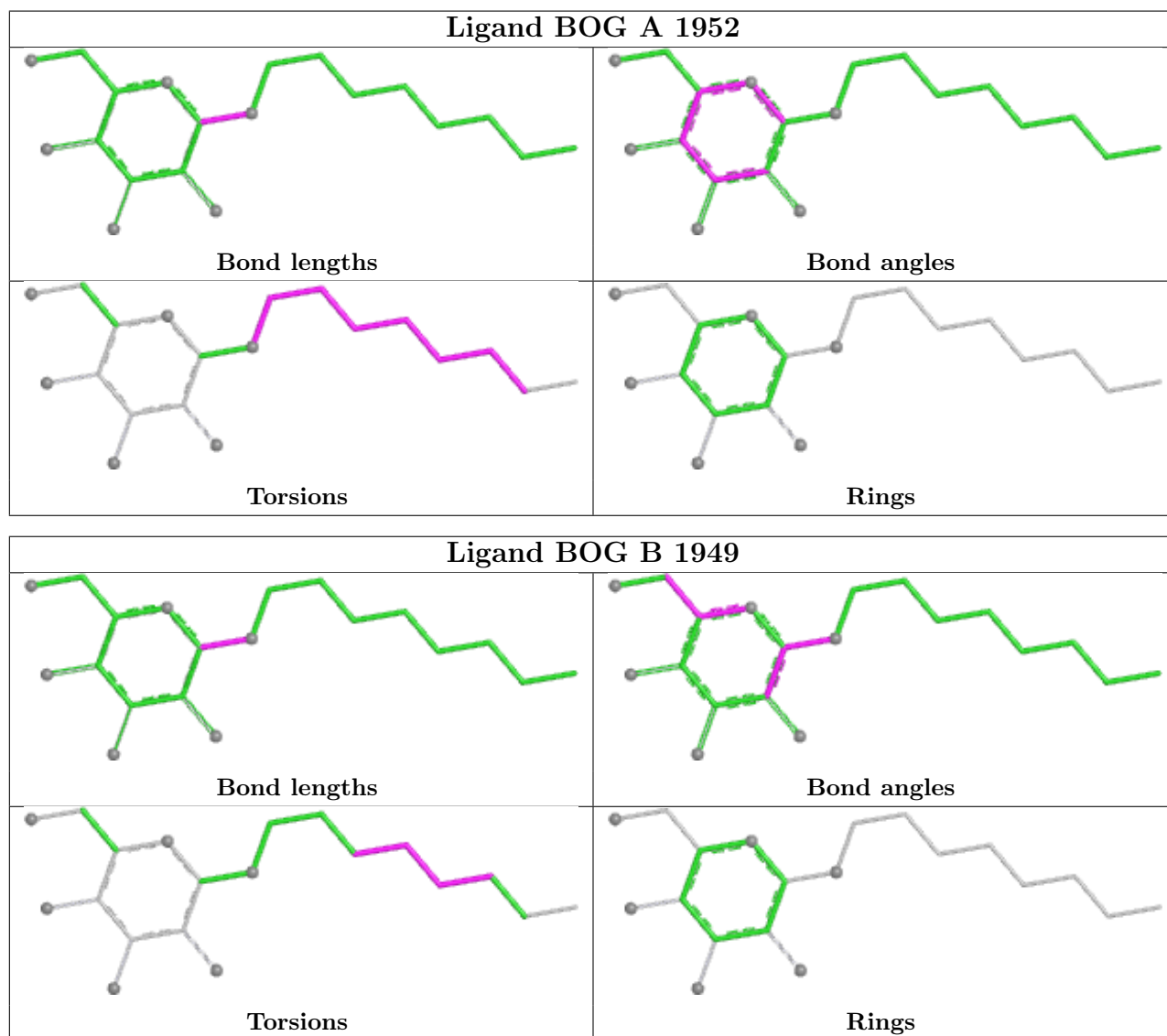
Mol	Chain	Res	Type	Atoms
4	A	600	FAD	C5B-O5B-PA-O2A
4	A	600	FAD	C5B-O5B-PA-O3P
4	A	600	FAD	C4B-C5B-O5B-PA
4	B	600	FAD	C5B-O5B-PA-O1A
4	B	600	FAD	C5B-O5B-PA-O2A

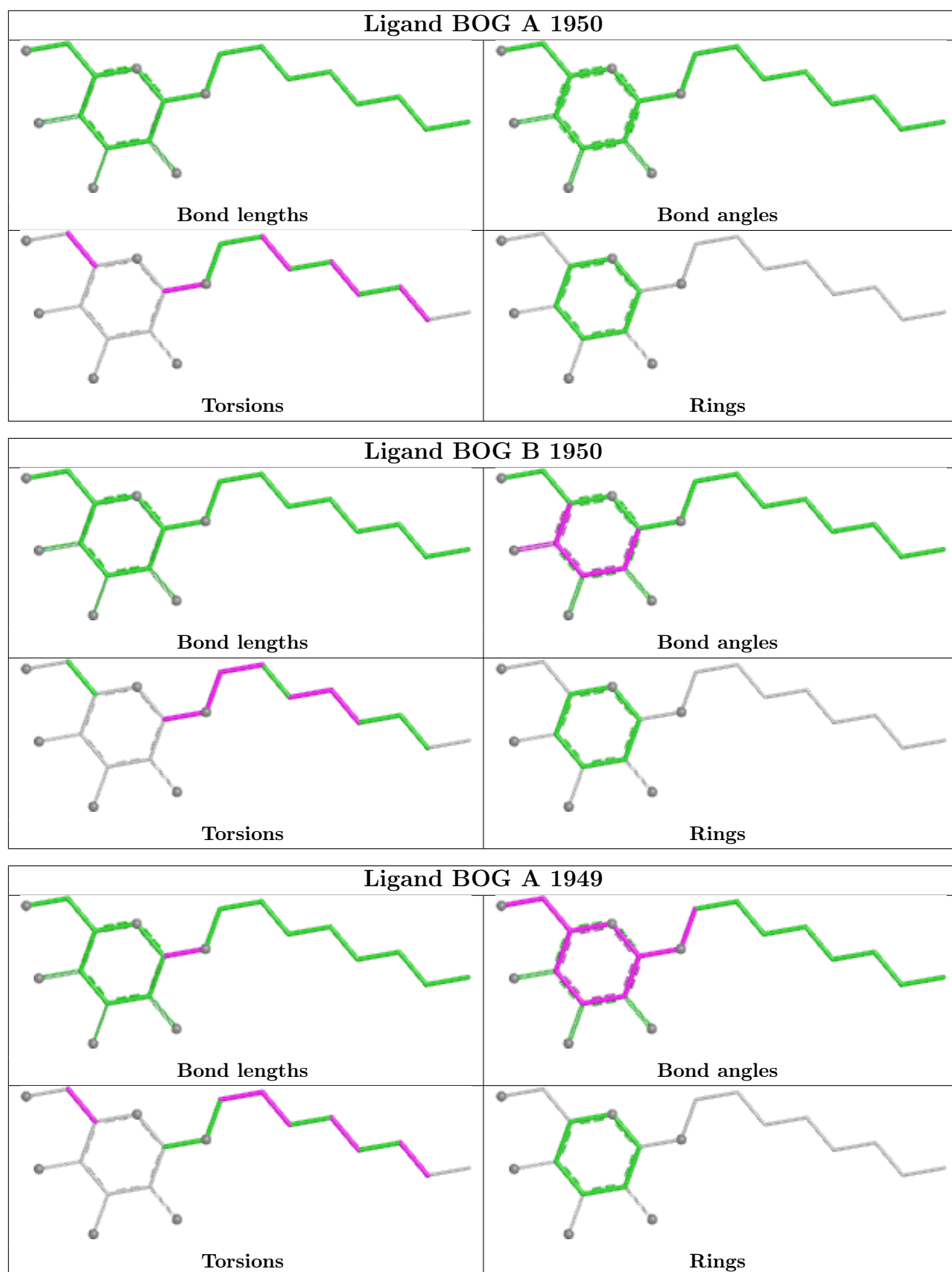
There are no ring outliers.

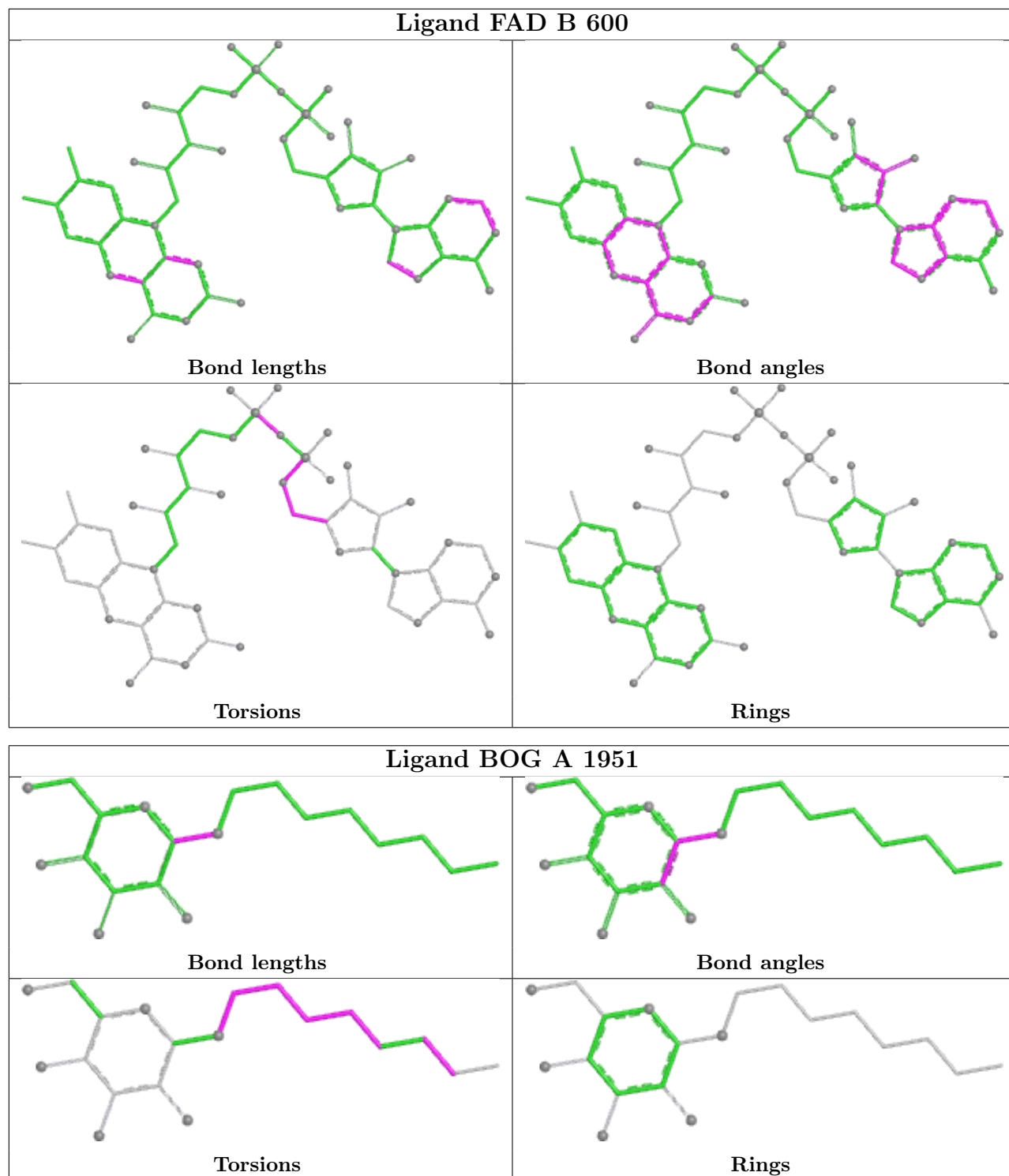
19 monomers are involved in 50 short contacts:

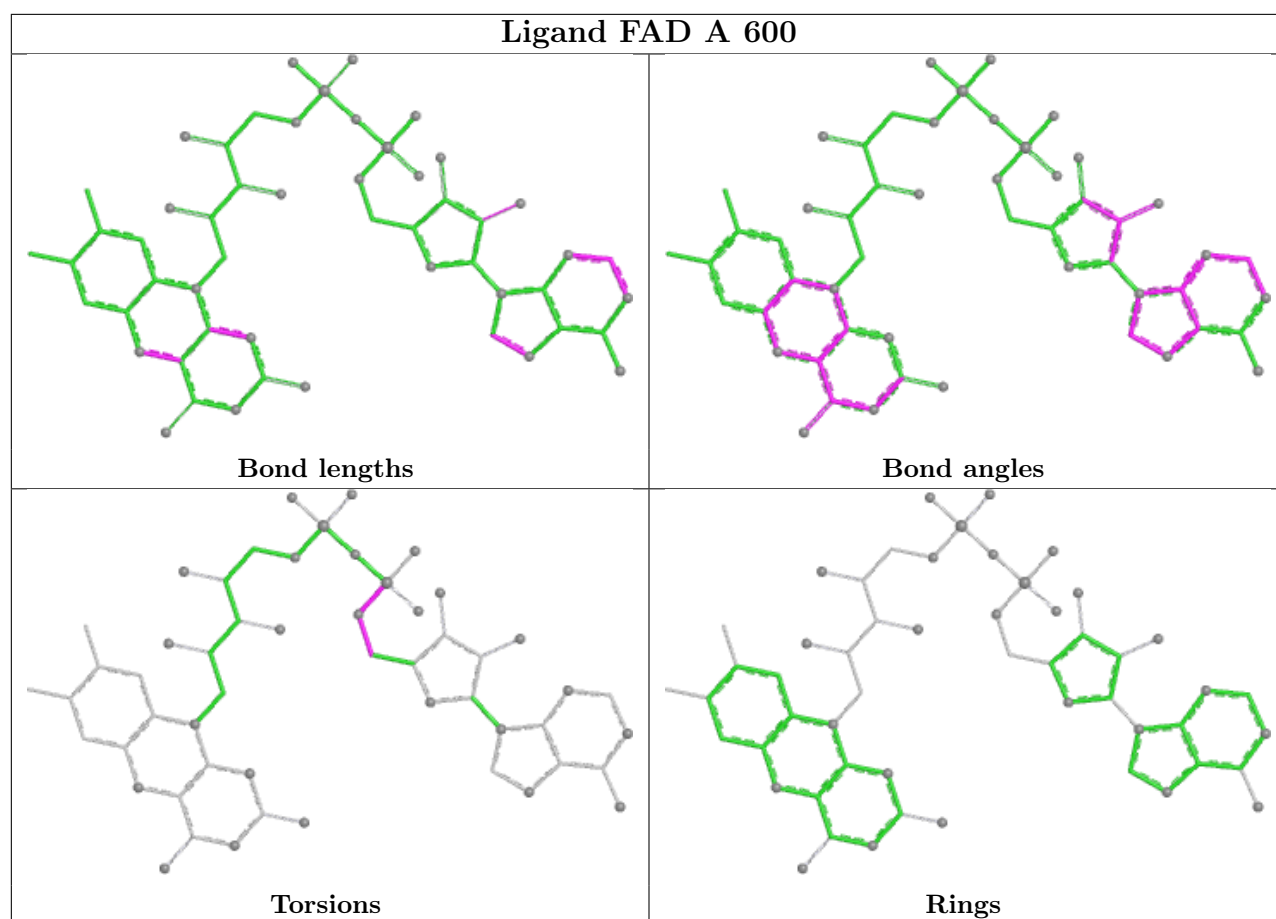
Mol	Chain	Res	Type	Clashes	Symm-Clashes
2	A	1952	BOG	3	0
2	B	1949	BOG	1	0
2	A	1950	BOG	6	0
6	A	1962	EDO	3	0
3	B	1952	PO4	1	0
8	A	7066	T3A	1	0
6	B	1959	EDO	1	0
5	B	7067	13P	4	0
2	B	1950	BOG	2	0
6	A	1956	EDO	1	0
2	A	1949	BOG	4	0
4	B	600	FAD	7	0
7	A	1957	IMD	1	0
3	B	1951	PO4	1	0
5	A	1955	13P	3	0
3	A	1954	PO4	1	0
6	B	1961	EDO	3	0
4	A	600	FAD	8	0
8	B	7066	T3A	1	0

The following is a two-dimensional graphical depiction of Mogul quality analysis of bond lengths, bond angles, torsion angles, and ring geometry for all instances of the Ligand of Interest. In addition, ligands with molecular weight > 250 and outliers as shown on the validation Tables will also be included. For torsion angles, if less than 5% of the Mogul distribution of torsion angles is within 10 degrees of the torsion angle in question, then that torsion angle is considered an outlier. Any bond that is central to one or more torsion angles identified as an outlier by Mogul will be highlighted in the graph. For rings, the root-mean-square deviation (RMSD) between the ring in question and similar rings identified by Mogul is calculated over all ring torsion angles. If the average RMSD is greater than 60 degrees and the minimal RMSD between the ring in question and any Mogul-identified rings is also greater than 60 degrees, then that ring is considered an outlier. The outliers are highlighted in purple. The color gray indicates Mogul did not find sufficient equivalents in the CSD to analyse the geometry.









5.7 Other polymers [i](#)

There are no such residues in this entry.

5.8 Polymer linkage issues [i](#)

There are no chain breaks in this entry.

6 Fit of model and data [i](#)

6.1 Protein, DNA and RNA chains [i](#)

In the following table, the column labelled '#RSRZ > 2' contains the number (and percentage) of RSRZ outliers, followed by percent RSRZ outliers for the chain as percentile scores relative to all X-ray entries and entries of similar resolution. The OWAB column contains the minimum, median, 95th percentile and maximum values of the occupancy-weighted average B-factor per residue. The column labelled 'Q < 0.9' lists the number of (and percentage) of residues with an average occupancy less than 0.9.

Mol	Chain	Analysed	<RSRZ>	#RSRZ>2	OWAB(Å ²)	Q<0.9
1	A	494/501 (98%)	-1.52	0 100 100	16, 33, 53, 78	0
1	B	494/501 (98%)	-1.53	0 100 100	16, 33, 53, 75	0
All	All	988/1002 (98%)	-1.52	0 100 100	16, 33, 53, 78	0

There are no RSRZ outliers to report.

6.2 Non-standard residues in protein, DNA, RNA chains [i](#)

There are no non-standard protein/DNA/RNA residues in this entry.

6.3 Carbohydrates [i](#)

There are no oligosaccharides in this entry.

6.4 Ligands [i](#)

In the following table, the Atoms column lists the number of modelled atoms in the group and the number defined in the chemical component dictionary. The B-factors column lists the minimum, median, 95th percentile and maximum values of B factors of atoms in the group. The column labelled 'Q < 0.9' lists the number of atoms with occupancy less than 0.9.

Mol	Type	Chain	Res	Atoms	RSCC	RSR	B-factors(Å ²)	Q<0.9
2	BOG	A	1950	20/20	0.97	0.09	110,112,114,114	0
2	BOG	A	1952	20/20	0.97	0.06	103,105,106,106	0
3	PO4	B	1953	5/5	0.97	0.05	109,109,109,110	0
6	EDO	B	1959	4/4	0.97	0.04	55,57,57,58	0
2	BOG	B	1949	20/20	0.98	0.03	60,66,69,70	0
2	BOG	B	1950	20/20	0.98	0.06	116,117,119,119	0
3	PO4	A	1953	5/5	0.98	0.06	92,92,93,93	0

Continued on next page...

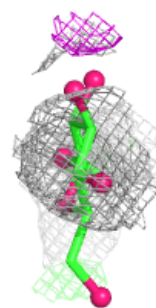
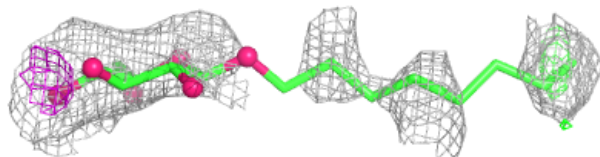
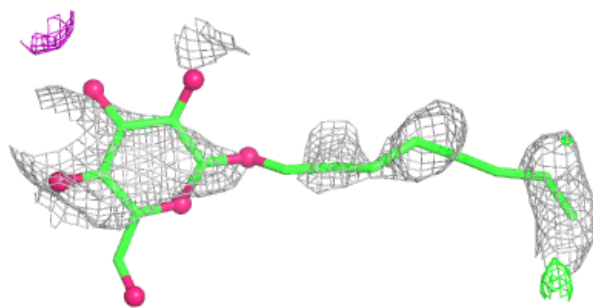
Continued from previous page...

Mol	Type	Chain	Res	Atoms	RSCC	RSR	B-factors(\AA^2)	Q<0.9
2	BOG	A	1951	20/20	0.98	0.04	92,95,97,97	0
6	EDO	A	1956	4/4	0.98	0.04	50,50,52,53	0
6	EDO	A	1961	4/4	0.98	0.05	52,57,57,59	0
6	EDO	A	1962	4/4	0.98	0.04	43,44,45,50	0
6	EDO	B	1956	4/4	0.98	0.03	42,44,44,49	0
6	EDO	B	1957	4/4	0.98	0.04	25,35,38,40	0
6	EDO	B	1958	4/4	0.98	0.04	48,50,51,53	0
2	BOG	A	1949	20/20	0.98	0.04	58,64,73,74	0
3	PO4	B	1951	5/5	0.99	0.06	75,76,77,78	0
6	EDO	A	1958	4/4	0.99	0.03	24,33,36,38	0
6	EDO	A	1959	4/4	0.99	0.03	38,44,44,47	0
6	EDO	A	1960	4/4	0.99	0.04	35,41,44,49	0
3	PO4	B	1952	5/5	0.99	0.04	70,71,75,75	0
3	PO4	A	1954	5/5	0.99	0.04	70,71,74,76	0
6	EDO	B	1954	4/4	0.99	0.03	35,39,40,44	0
6	EDO	B	1955	4/4	0.99	0.04	57,58,60,61	0
4	FAD	A	600	53/53	0.99	0.03	17,20,24,35	0
4	FAD	B	600	53/53	0.99	0.03	15,19,22,25	0
5	13P	A	1955	10/10	0.99	0.04	28,38,43,44	0
5	13P	B	7067	10/10	0.99	0.04	28,40,45,45	0
6	EDO	B	1961	4/4	0.99	0.04	46,47,47,50	0
7	IMD	A	1957	5/5	0.99	0.04	59,60,61,62	0
7	IMD	B	1960	5/5	0.99	0.03	59,59,62,62	0
8	T3A	A	7066	15/15	0.99	0.03	23,37,44,49	0
8	T3A	B	7066	15/15	0.99	0.04	24,39,45,47	0

The following is a graphical depiction of the model fit to experimental electron density of all instances of the Ligand of Interest. In addition, ligands with molecular weight > 250 and outliers as shown on the geometry validation Tables will also be included. Each fit is shown from different orientation to approximate a three-dimensional view.

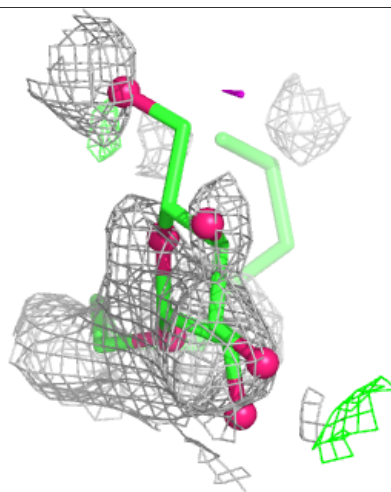
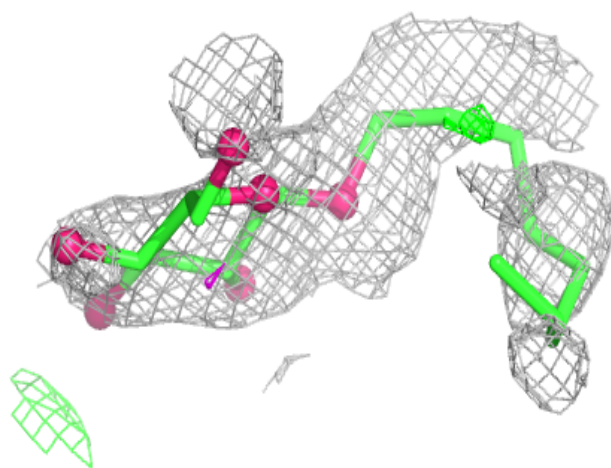
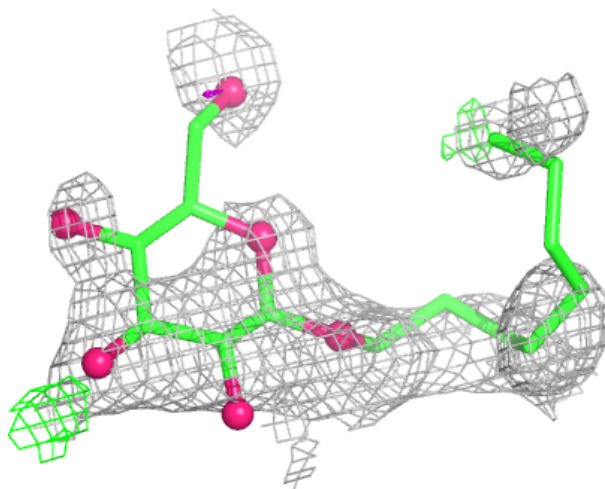
Electron density around BOG A 1950:

$2mF_o-DF_c$ (at 0.7 rmsd) in gray
 mF_o-DF_c (at 3 rmsd) in purple (negative)
and green (positive)



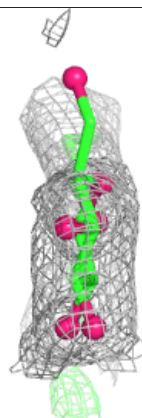
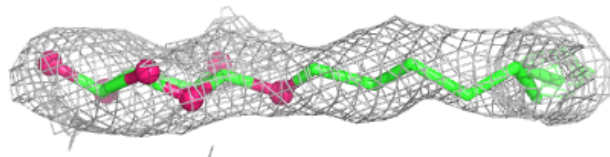
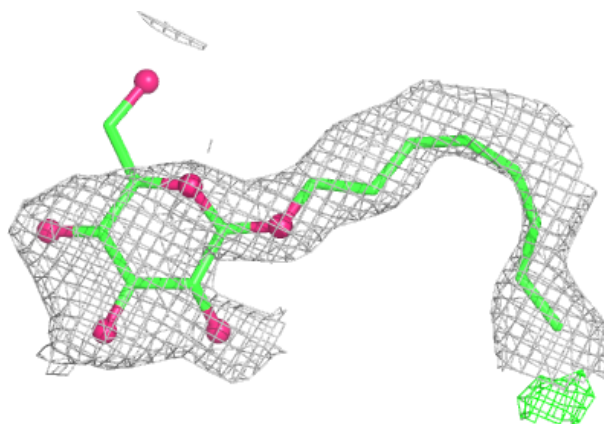
Electron density around BOG A 1952:

$2mF_o-DF_c$ (at 0.7 rmsd) in gray
 mF_o-DF_c (at 3 rmsd) in purple (negative)
and green (positive)

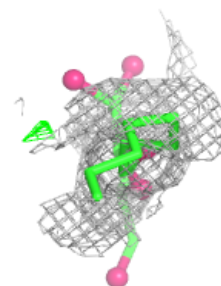
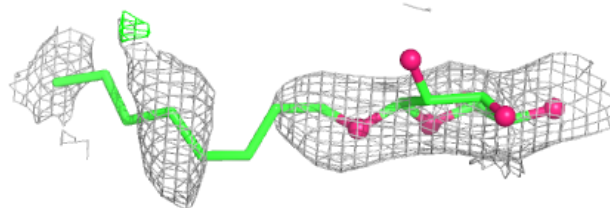
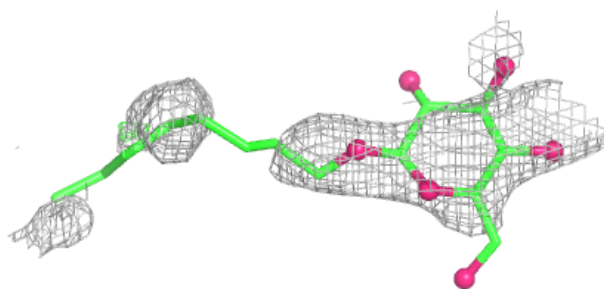


Electron density around BOG B 1949:

$2mF_o-DF_c$ (at 0.7 rmsd) in gray
 mF_o-DF_c (at 3 rmsd) in purple (negative)
and green (positive)

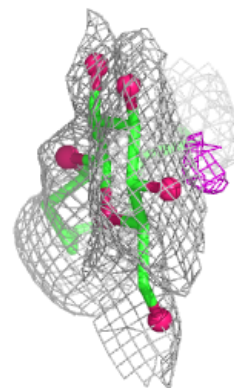
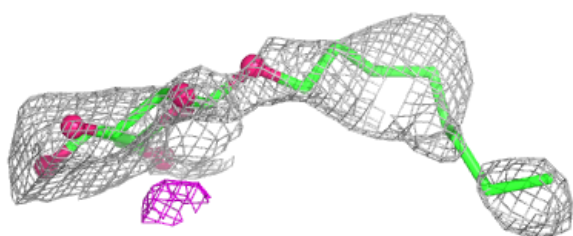
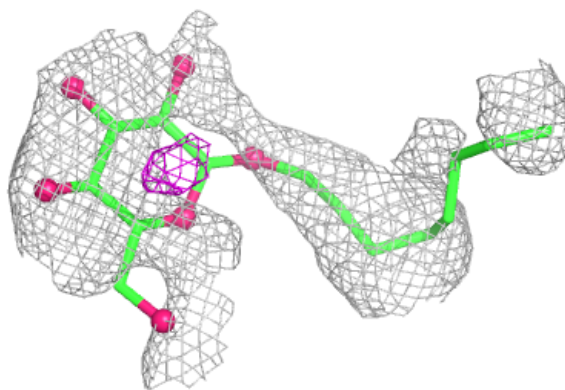
**Electron density around BOG B 1950:**

$2mF_o-DF_c$ (at 0.7 rmsd) in gray
 mF_o-DF_c (at 3 rmsd) in purple (negative)
and green (positive)

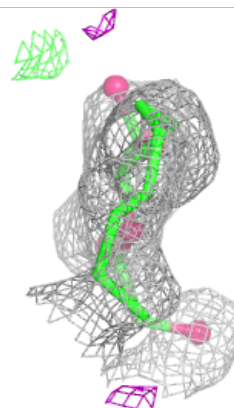
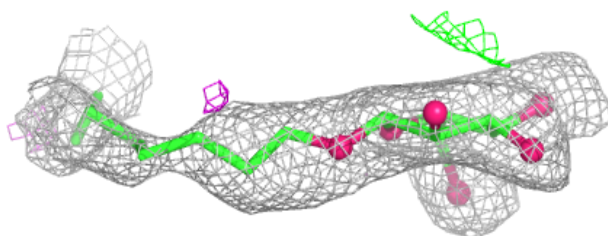
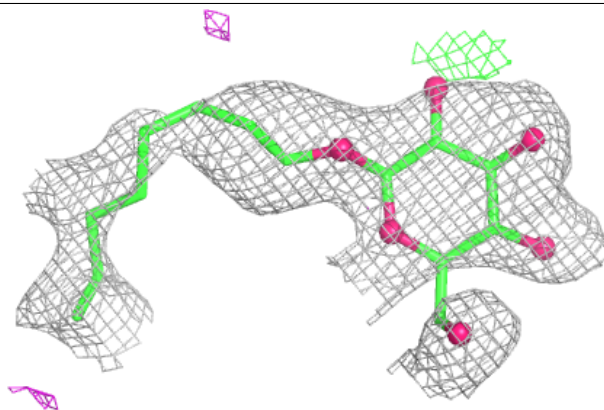


Electron density around BOG A 1951:

$2mF_o-DF_c$ (at 0.7 rmsd) in gray
 mF_o-DF_c (at 3 rmsd) in purple (negative)
and green (positive)

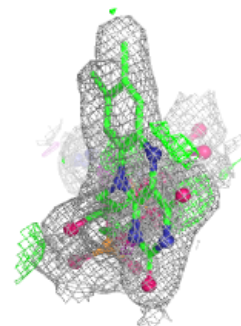
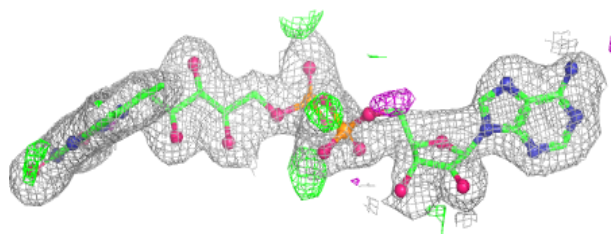
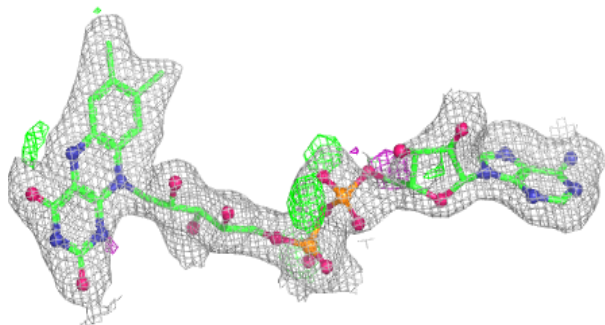
**Electron density around BOG A 1949:**

$2mF_o-DF_c$ (at 0.7 rmsd) in gray
 mF_o-DF_c (at 3 rmsd) in purple (negative)
and green (positive)

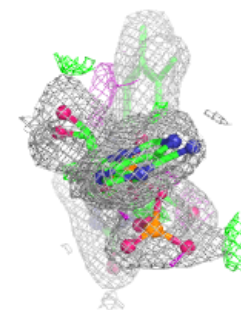
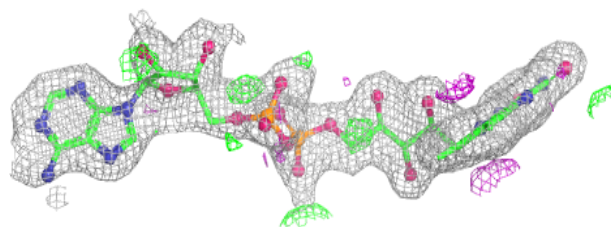
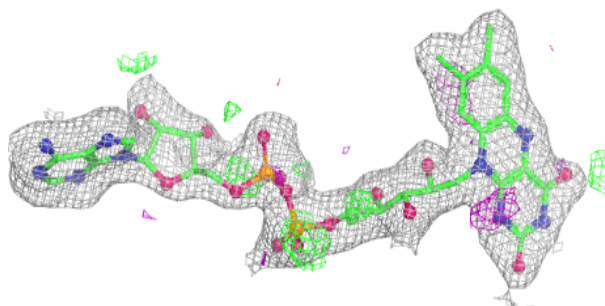


Electron density around FAD A 600:

$2mF_o-DF_c$ (at 0.7 rmsd) in gray
 mF_o-DF_c (at 3 rmsd) in purple (negative)
and green (positive)

**Electron density around FAD B 600:**

$2mF_o-DF_c$ (at 0.7 rmsd) in gray
 mF_o-DF_c (at 3 rmsd) in purple (negative)
and green (positive)



6.5 Other polymers [i](#)

There are no such residues in this entry.