



wwPDB EM Validation Summary Report ⓘ

Mar 9, 2026 – 12:19 PM UTC

PDB ID : 8PY2 / pdb_00008py2
EMDB ID : EMD-18009
Title : Cryo-EM structure of the human BRISC dimer complex bound to compound JMS-175-2
Authors : Chandler, F.; Zeqiraj, E.
Deposited on : 2023-07-24
Resolution : 3.32 Å(reported)

This is a wwPDB EM Validation Summary Report for a publicly released PDB entry.

We welcome your comments at validation@mail.wwpdb.org

A user guide is available at

<https://www.wwpdb.org/validation/2017/EMValidationReportHelp>
with specific help available everywhere you see the ⓘ symbol.

The types of validation reports are described at

<http://www.wwpdb.org/validation/2017/FAQs#types>.

The following versions of software and data (see [references ⓘ](#)) were used in the production of this report:

EMDB validation analysis : 0.0.1.dev132
Mogul : 2022.3.0, CSD as543be (2022)
MolProbity : 4-5-2 with Phenix2.0
Buster-report : wwPDB partial adaption of 1.1.7 (2018)
Percentile statistics : 20250101.v01 (using entries in the PDB archive January 1st 2025)
EM percentile statistics : 202505.v01 (Using data in the EMDB archive up until May 2025)
MapQ : 1.9.13
Ideal geometry (proteins) : Engh & Huber (2001)
Ideal geometry (DNA, RNA) : Parkinson et al. (1996)
Validation Pipeline (wwPDB-VP) : 2.49

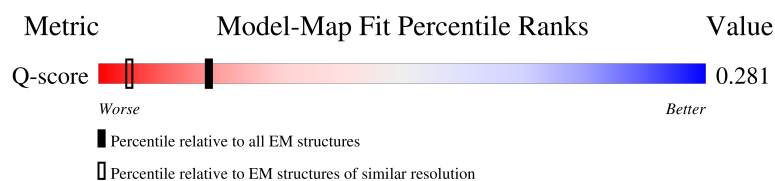
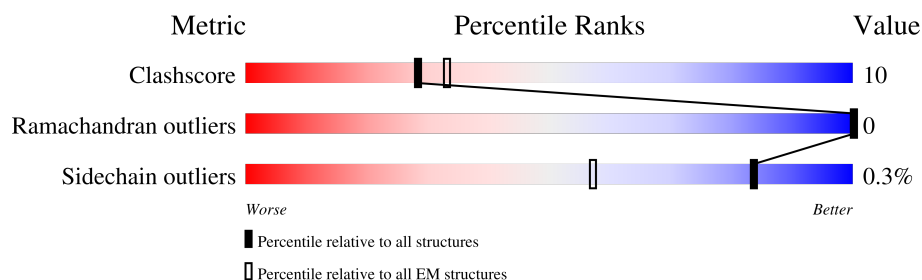
1 Overall quality at a glance

The following experimental techniques were used to determine the structure:

ELECTRON MICROSCOPY

The reported resolution of this entry is 3.32 Å.

Percentile scores (ranging between 0-100) for global validation metrics of the entry are shown in the following graphic. The table shows the number of entries on which the scores are based.



Metric	Whole archive (#Entries)	EM structures (#Entries)	Similar EM resolution (#Entries, resolution range(Å))
Clashscore	229148	23984	-
Ramachandran outliers	224038	23583	-
Sidechain outliers	223484	23102	-
Q-score	-	25397	14518 (2.82 - 3.82)

The table below summarises the geometric issues observed across the polymeric chains and their fit to the map. The red, orange, yellow and green segments of the bar indicate the fraction of residues that contain outliers for ≥ 3 , 2, 1 and 0 types of geometric quality criteria respectively. A grey segment represents the fraction of residues that are not modelled. The numeric value for each fraction is indicated below the corresponding segment, with a dot representing fractions $\leq 5\%$. The upper red bar (where present) indicates the fraction of residues that have poor fit to the EM map (all-atom inclusion $< 40\%$). The numeric value is given above the bar.

Mol	Chain	Length	Quality of chain
1	A	316	<div> <div>8%</div> <div>59%</div> <div>20%</div> <div>20%</div> </div>
1	C	316	<div> <div>•</div> <div>59%</div> <div>21%</div> <div>20%</div> </div>
1	G	316	<div> <div>9%</div> <div>55%</div> <div>24%</div> <div>20%</div> </div>
1	I	316	<div> <div>10%</div> <div>53%</div> <div>26%</div> <div>20%</div> </div>

Continued on next page...

Continued from previous page...

Mol	Chain	Length	Quality of chain
2	B	267	
2	D	267	
2	H	267	
2	J	267	
3	E	385	
3	F	385	
3	K	385	
3	L	385	
4	M	259	
4	N	259	
4	O	259	
4	P	259	

2 Entry composition

There are 6 unique types of molecules in this entry. The entry contains 35730 atoms, of which 0 are hydrogens and 0 are deuteriums.

In the tables below, the AltConf column contains the number of residues with at least one atom in alternate conformation and the Trace column contains the number of residues modelled with at most 2 atoms.

- Molecule 1 is a protein called Lys-63-specific deubiquitinase BRCC36.

Mol	Chain	Residues	Atoms					AltConf	Trace
1	A	252	Total 2023	C 1269	N 362	O 378	S 14	0	0
1	C	252	Total 2022	C 1269	N 362	O 377	S 14	0	0
1	G	252	Total 2027	C 1272	N 363	O 378	S 14	0	0
1	I	252	Total 2027	C 1272	N 363	O 378	S 14	0	0

- Molecule 2 is a protein called BRISC complex subunit Abraxas 2.

Mol	Chain	Residues	Atoms					AltConf	Trace
2	B	237	Total 1937	C 1217	N 353	O 360	S 7	0	0
2	D	237	Total 1937	C 1217	N 353	O 360	S 7	0	0
2	H	237	Total 1937	C 1217	N 353	O 360	S 7	0	0
2	J	237	Total 1937	C 1217	N 353	O 360	S 7	0	0

- Molecule 3 is a protein called BRISC and BRCA1-A complex member 2.

Mol	Chain	Residues	Atoms					AltConf	Trace
3	E	383	Total 3078	C 1993	N 504	O 567	S 14	0	0
3	F	383	Total 3072	C 1990	N 501	O 567	S 14	0	0
3	K	383	Total 3078	C 1993	N 504	O 567	S 14	0	0
3	L	383	Total 3060	C 1978	N 501	O 567	S 14	0	0

There are 8 discrepancies between the modelled and reference sequences:

Chain	Residue	Modelled	Actual	Comment	Reference
E	-1	GLY	-	expression tag	UNP Q9NXR7
E	0	ALA	-	expression tag	UNP Q9NXR7
F	-1	GLY	-	expression tag	UNP Q9NXR7
F	0	ALA	-	expression tag	UNP Q9NXR7
K	-1	GLY	-	expression tag	UNP Q9NXR7
K	0	ALA	-	expression tag	UNP Q9NXR7
L	-1	GLY	-	expression tag	UNP Q9NXR7
L	0	ALA	-	expression tag	UNP Q9NXR7

- Molecule 4 is a protein called BRISC and BRCA1-A complex member 1.

Mol	Chain	Residues	Atoms					AltConf	Trace
4	M	237	Total	C	N	O	S	0	0
			1888	1206	306	358	18		
4	N	237	Total	C	N	O	S	0	0
			1876	1196	306	356	18		
4	O	237	Total	C	N	O	S	0	0
			1870	1194	301	357	18		
4	P	237	Total	C	N	O	S	0	0
			1887	1206	306	357	18		

There are 4 discrepancies between the modelled and reference sequences:

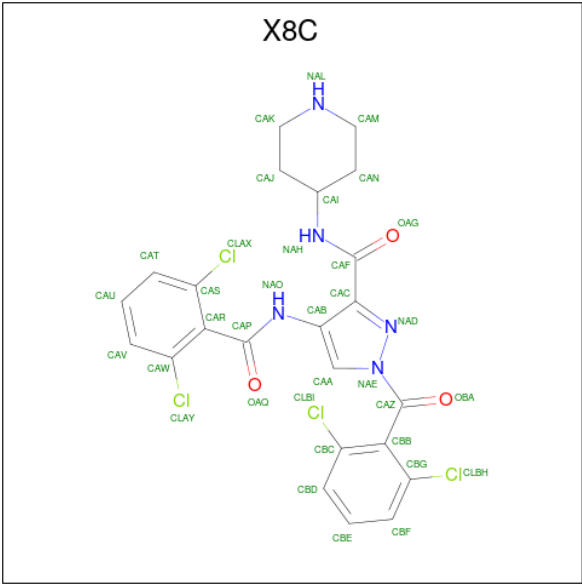
Chain	Residue	Modelled	Actual	Comment	Reference
M	71	MET	-	initiating methionine	UNP Q9NWX8
N	71	MET	-	initiating methionine	UNP Q9NWX8
O	71	MET	-	initiating methionine	UNP Q9NWX8
P	71	MET	-	initiating methionine	UNP Q9NWX8

- Molecule 5 is ZINC ION (CCD ID: ZN) (formula: Zn).

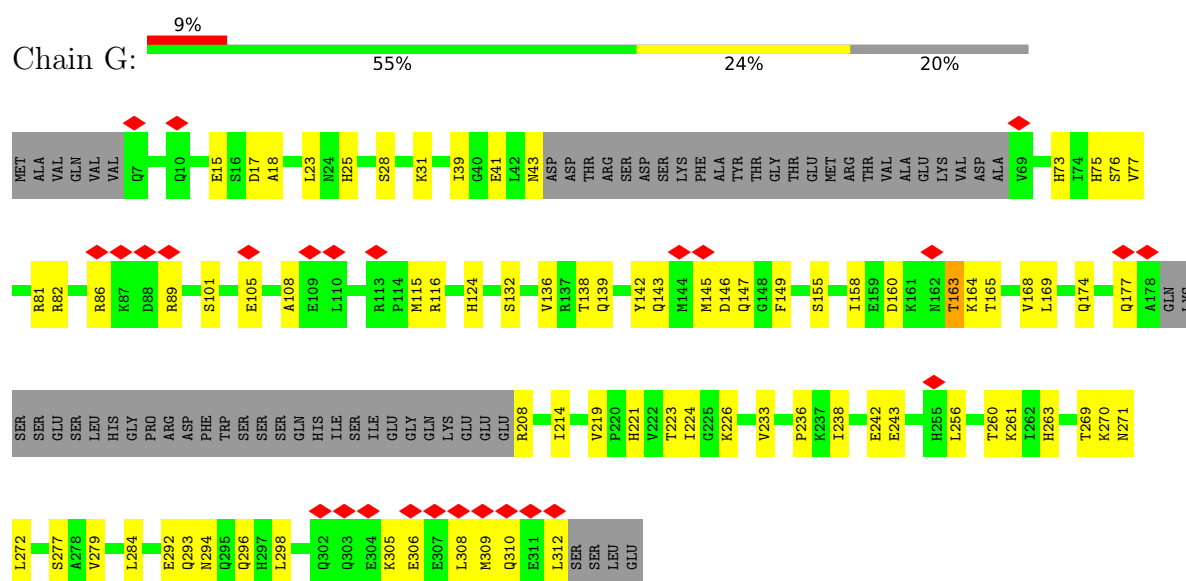
Mol	Chain	Residues	Atoms		AltConf
5	A	1	Total	Zn	0
			1	1	
5	C	1	Total	Zn	0
			1	1	
5	G	1	Total	Zn	0
			1	1	
5	I	1	Total	Zn	0
			1	1	

- Molecule 6 is 1-[2,6-bis(chloranyl)phenyl]carbonyl-4-[[2,6-bis(chloranyl)phenyl]carbonylamino]-N-piperidin-4-yl-pyrazole-3-carboxamide (CCD ID: X8C) (formula: C₂₃H₁₉Cl₄N₅O₃)

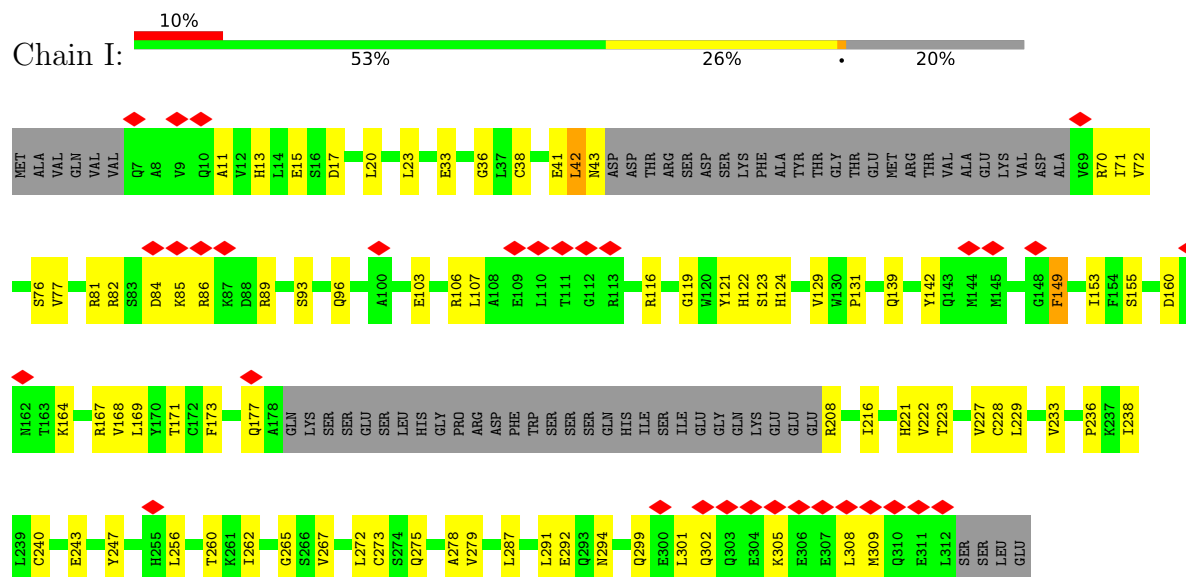
(labeled as "Ligand of Interest" by depositor).



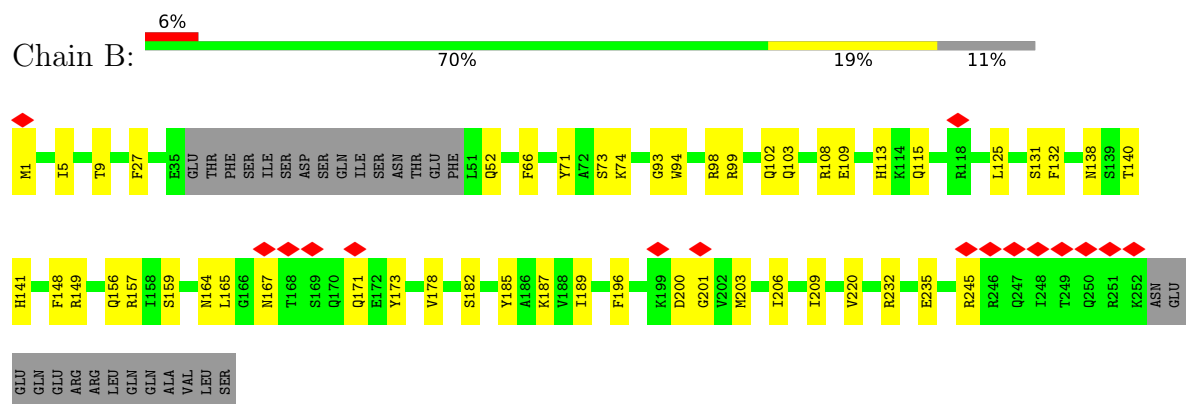
Mol	Chain	Residues	Atoms					AltConf
6	D	1	Total	C	Cl	N	O	0
			35	23	4	5	3	
6	F	1	Total	C	Cl	N	O	0
			35	23	4	5	3	



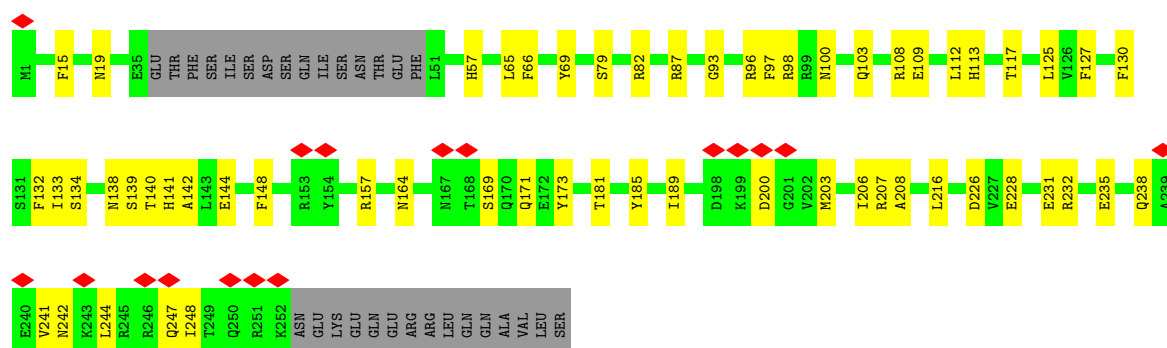
- Molecule 1: Lys-63-specific deubiquitinase BRCC36



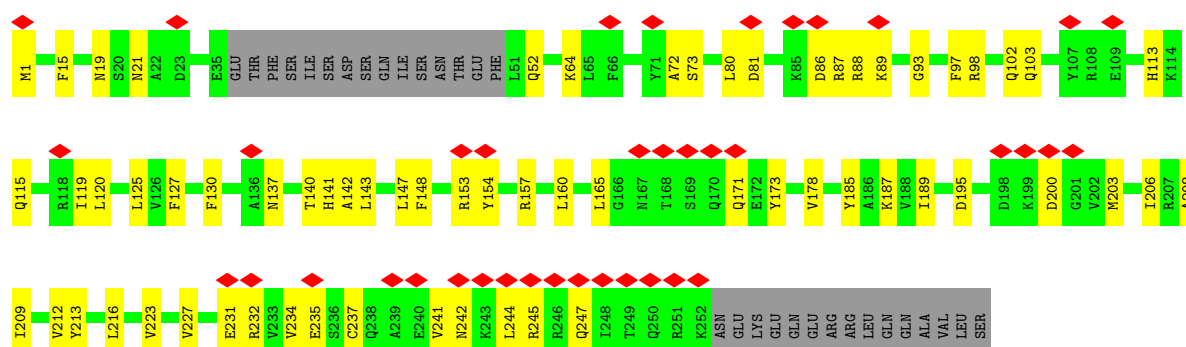
- Molecule 2: BRISC complex subunit Abraxas 2



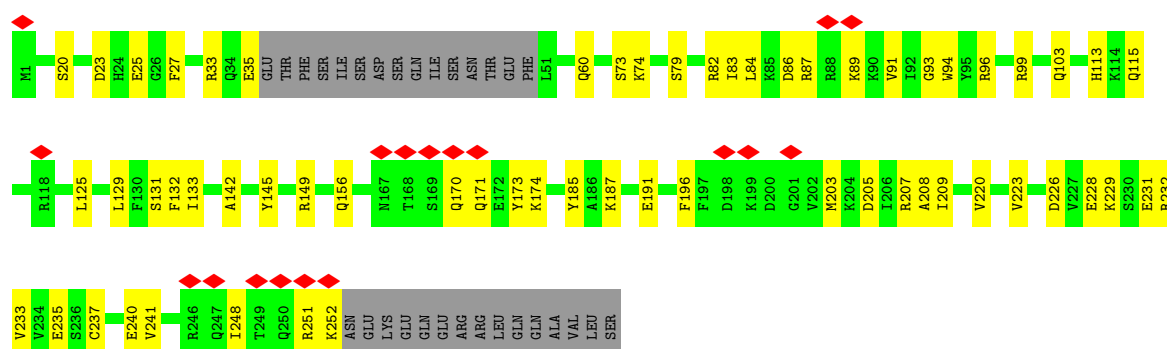
- Molecule 2: BRISC complex subunit Abraxas 2



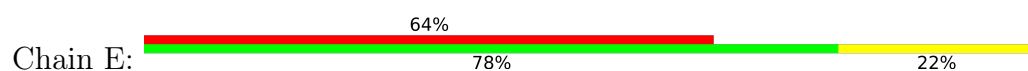
• Molecule 2: BRISC complex subunit Abraxas 2

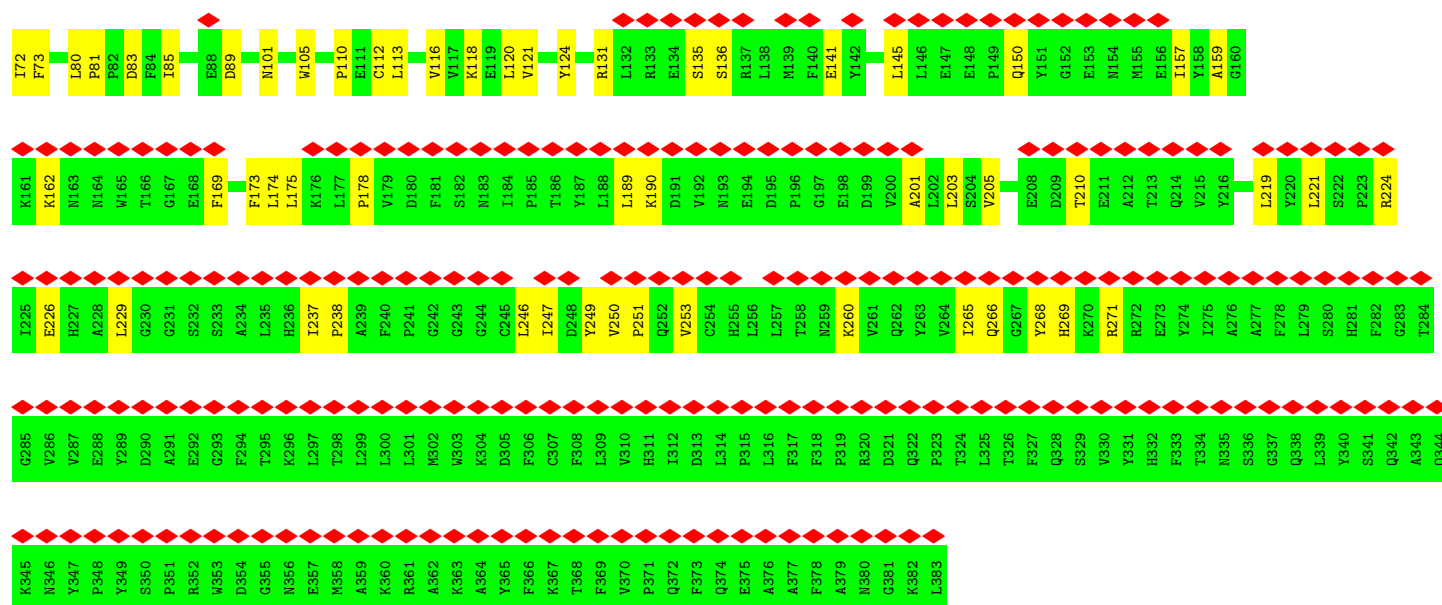


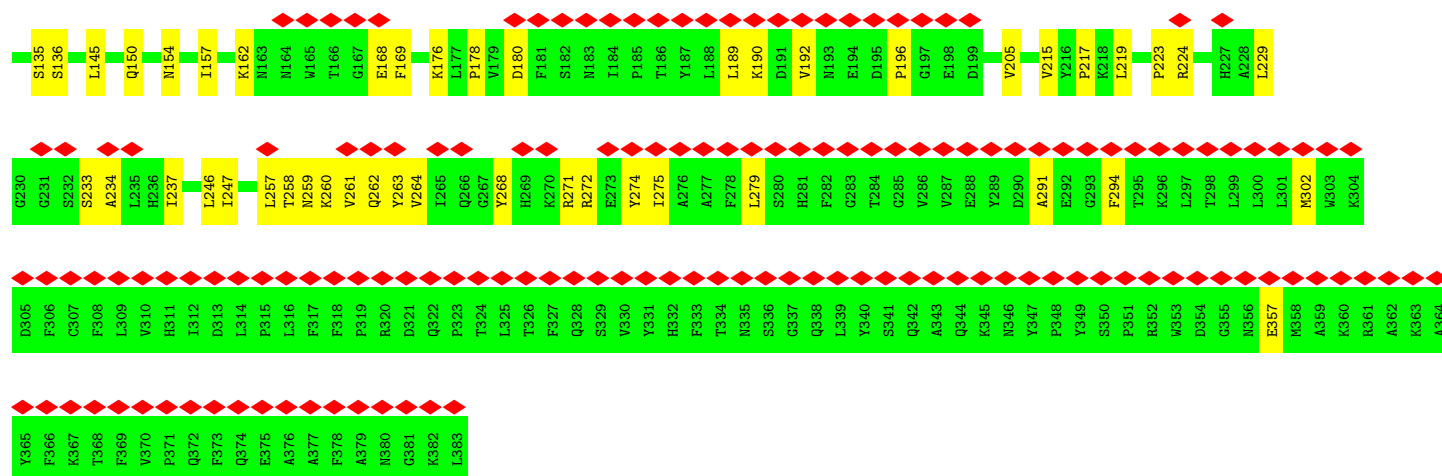
• Molecule 2: BRISC complex subunit Abraxas 2



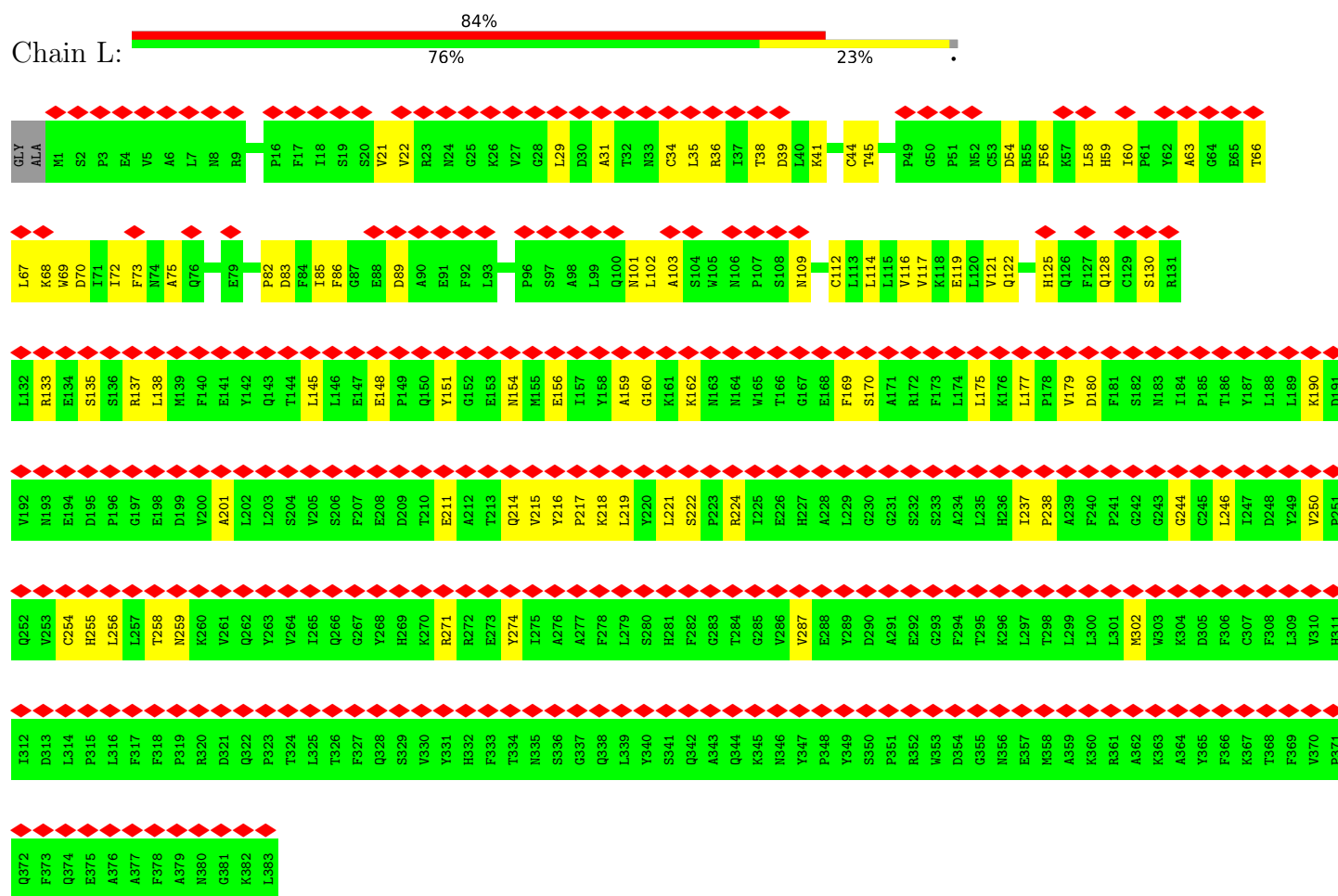
• Molecule 3: BRISC and BRCA1-A complex member 2



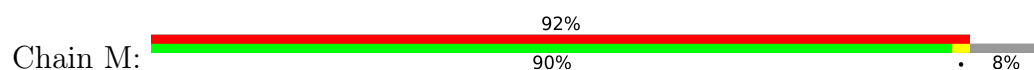


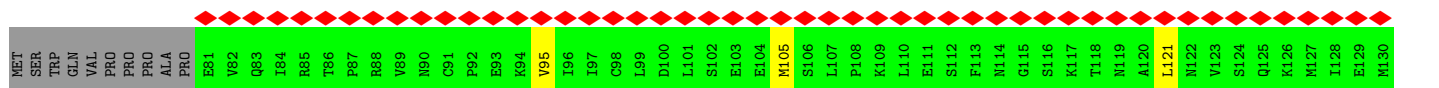
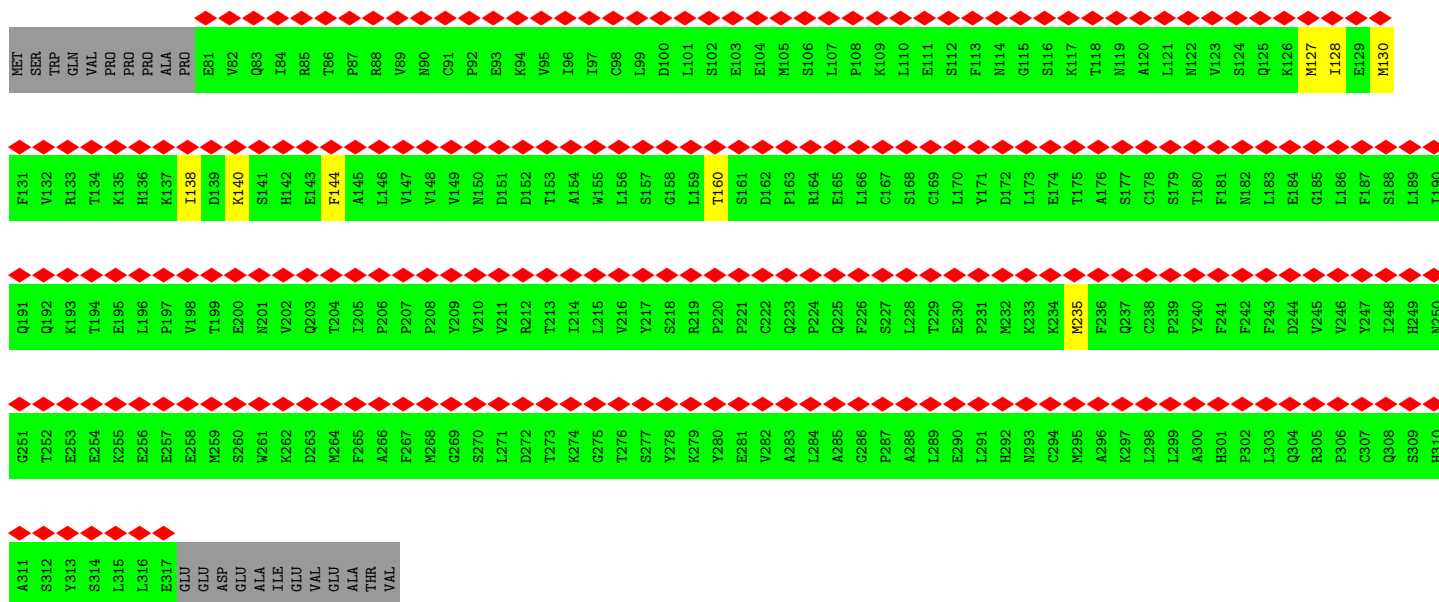


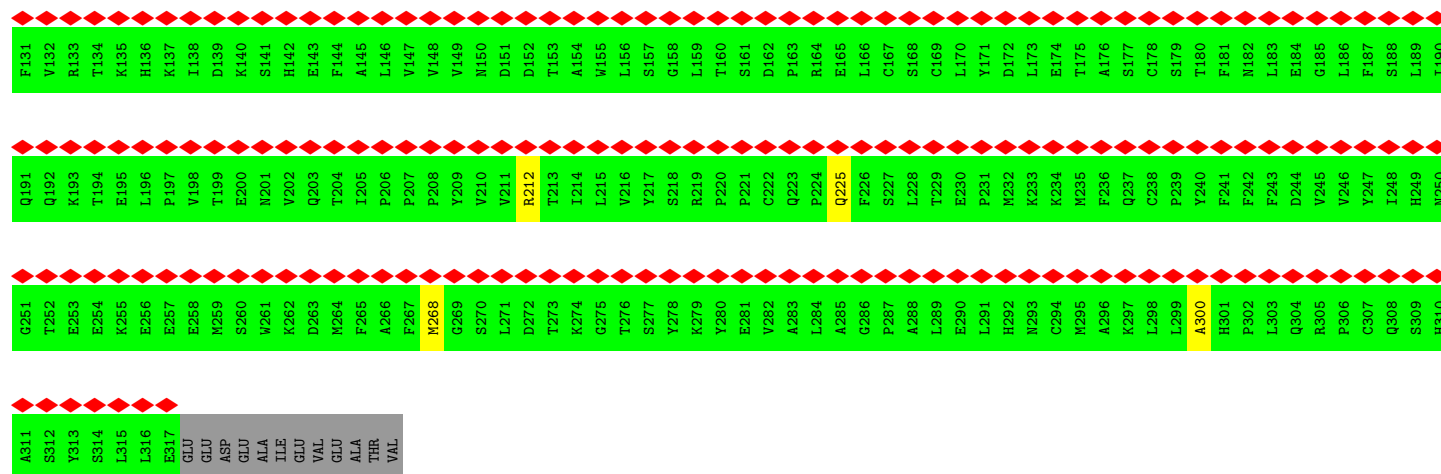
• Molecule 3: BRISC and BRCA1-A complex member 2



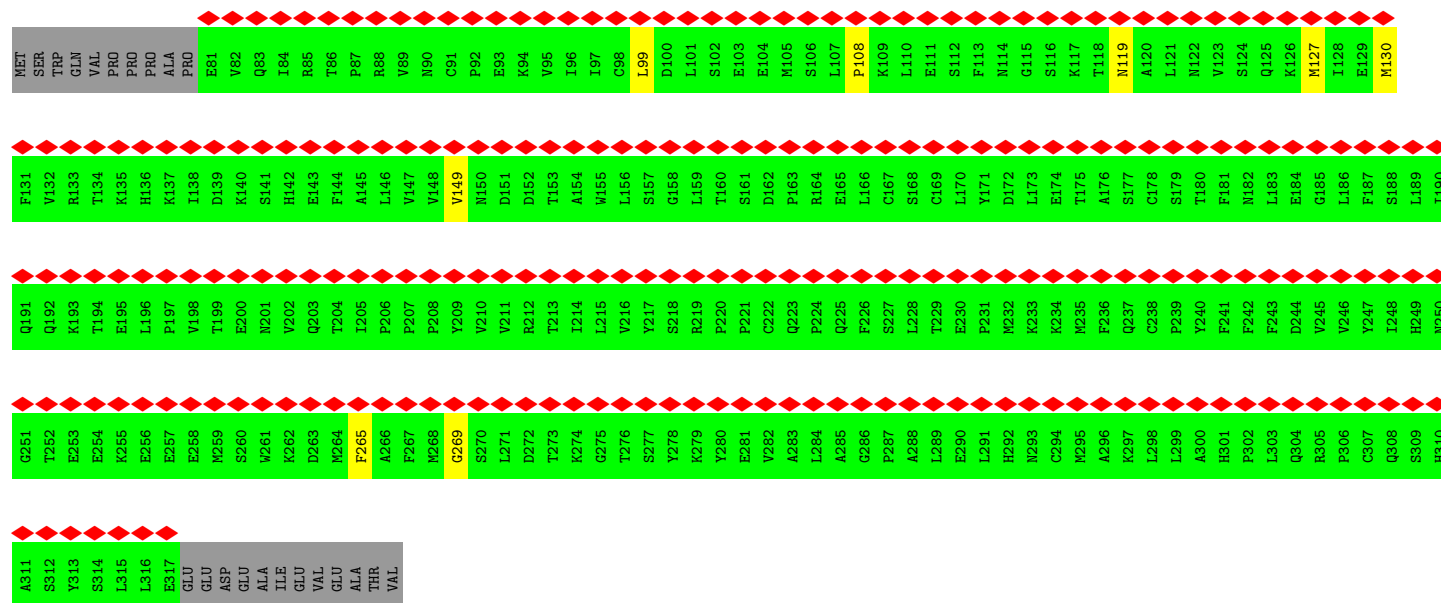
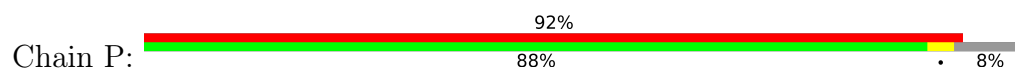
• Molecule 4: BRISC and BRCA1-A complex member 1







- Molecule 4: BRISC and BRCA1-A complex member 1



4 Experimental information

Property	Value	Source
EM reconstruction method	SINGLE PARTICLE	Depositor
Imposed symmetry	POINT, Not provided	
Number of particles used	371872	Depositor
Resolution determination method	FSC 0.143 CUT-OFF	Depositor
CTF correction method	PHASE FLIPPING AND AMPLITUDE CORRECTION	Depositor
Microscope	FEI TITAN KRIOS	Depositor
Voltage (kV)	300	Depositor
Electron dose ($e^-/\text{\AA}^2$)	39.84	Depositor
Minimum defocus (nm)	1700	Depositor
Maximum defocus (nm)	3100	Depositor
Magnification	96000	Depositor
Image detector	FEI FALCON IV (4k x 4k)	Depositor
Maximum map value	0.031	Depositor
Minimum map value	-0.008	Depositor
Average map value	0.000	Depositor
Map value standard deviation	0.001	Depositor
Recommended contour level	0.0095	Depositor
Map size (Å)	289.344, 289.344, 289.344	wwPDB
Map dimensions	352, 352, 352	wwPDB
Map angles (°)	90.0, 90.0, 90.0	wwPDB
Pixel spacing (Å)	0.82199997, 0.82199997, 0.82199997	Depositor

5 Model quality

5.1 Standard geometry

Bond lengths and bond angles in the following residue types are not validated in this section: ZN, X8C

The Z score for a bond length (or angle) is the number of standard deviations the observed value is removed from the expected value. A bond length (or angle) with $|Z| > 5$ is considered an outlier worth inspection. RMSZ is the root-mean-square of all Z scores of the bond lengths (or angles).

Mol	Chain	Bond lengths		Bond angles	
		RMSZ	# $ Z > 5$	RMSZ	# $ Z > 5$
1	A	0.12	0/2059	0.28	0/2784
1	C	0.13	0/2058	0.28	0/2783
1	G	0.11	0/2063	0.24	0/2788
1	I	0.11	0/2063	0.27	0/2788
2	B	0.12	0/1972	0.25	0/2655
2	D	0.12	0/1972	0.25	0/2655
2	H	0.10	0/1972	0.25	0/2655
2	J	0.11	0/1972	0.24	0/2655
3	E	0.10	0/3169	0.27	0/4310
3	F	0.10	0/3163	0.26	0/4303
3	K	0.11	0/3169	0.29	0/4310
3	L	0.09	0/3150	0.27	0/4286
4	M	0.09	0/1933	0.31	0/2622
4	N	0.09	0/1920	0.31	0/2604
4	O	0.09	0/1913	0.28	0/2597
4	P	0.09	0/1932	0.31	0/2621
All	All	0.11	0/36480	0.27	0/49416

There are no bond length outliers.

There are no bond angle outliers.

There are no chirality outliers.

There are no planarity outliers.

5.2 Too-close contacts

In the following table, the Non-H and H(model) columns list the number of non-hydrogen atoms and hydrogen atoms in the chain respectively. The H(added) column lists the number of hydrogen atoms added and optimized by MolProbity. The Clashes column lists the number of clashes within the asymmetric unit, whereas Symm-Clashes lists symmetry-related clashes.

Mol	Chain	Non-H	H(model)	H(added)	Clashes	Symm-Clashes
1	A	2023	0	2011	50	0
1	C	2022	0	2008	52	0
1	G	2027	0	2022	59	0
1	I	2027	0	2022	68	0
2	B	1937	0	1924	38	0
2	D	1937	0	1924	50	0
2	H	1937	0	1924	56	0
2	J	1937	0	1924	45	0
3	E	3078	0	3001	55	0
3	F	3072	0	2990	32	0
3	K	3078	0	3001	54	0
3	L	3060	0	2965	58	0
4	M	1888	0	1868	3	0
4	N	1876	0	1840	5	0
4	O	1870	0	1835	3	0
4	P	1887	0	1865	4	0
5	A	1	0	0	0	0
5	C	1	0	0	0	0
5	G	1	0	0	0	0
5	I	1	0	0	0	0
6	D	35	0	0	1	0
6	F	35	0	0	2	0
All	All	35730	0	35124	545	0

The all-atom clashscore is defined as the number of clashes found per 1000 atoms (including hydrogen atoms). The all-atom clashscore for this structure is 10.

The worst 5 of 545 close contacts within the same asymmetric unit are listed below, sorted by their clash magnitude.

Atom-1	Atom-2	Interatomic distance (Å)	Clash overlap (Å)
3:E:237:ILE:HD11	3:E:253:VAL:HG12	1.61	0.82
3:K:215:VAL:HG23	3:K:217:PRO:HD3	1.65	0.78
2:H:140:THR:HG23	1:I:171:THR:HG22	1.69	0.73
2:H:72:ALA:HB2	3:L:103:ALA:HB2	1.70	0.73
2:J:23:ASP:OD1	3:K:55:ARG:NH2	2.22	0.72

There are no symmetry-related clashes.

5.3 Torsion angles

5.3.1 Protein backbone

In the following table, the Percentiles column shows the percent Ramachandran outliers of the chain as a percentile score with respect to all PDB entries followed by that with respect to all EM entries.

The Analysed column shows the number of residues for which the backbone conformation was analysed, and the total number of residues.

Mol	Chain	Analysed	Favoured	Allowed	Outliers	Percentiles	
1	A	246/316 (78%)	243 (99%)	3 (1%)	0	100	100
1	C	246/316 (78%)	240 (98%)	6 (2%)	0	100	100
1	G	246/316 (78%)	241 (98%)	5 (2%)	0	100	100
1	I	246/316 (78%)	242 (98%)	4 (2%)	0	100	100
2	B	233/267 (87%)	226 (97%)	7 (3%)	0	100	100
2	D	233/267 (87%)	227 (97%)	6 (3%)	0	100	100
2	H	233/267 (87%)	224 (96%)	9 (4%)	0	100	100
2	J	233/267 (87%)	231 (99%)	2 (1%)	0	100	100
3	E	381/385 (99%)	351 (92%)	30 (8%)	0	100	100
3	F	381/385 (99%)	347 (91%)	34 (9%)	0	100	100
3	K	381/385 (99%)	351 (92%)	30 (8%)	0	100	100
3	L	381/385 (99%)	355 (93%)	26 (7%)	0	100	100
4	M	235/259 (91%)	214 (91%)	21 (9%)	0	100	100
4	N	235/259 (91%)	213 (91%)	22 (9%)	0	100	100
4	O	235/259 (91%)	214 (91%)	21 (9%)	0	100	100
4	P	235/259 (91%)	220 (94%)	15 (6%)	0	100	100
All	All	4380/4908 (89%)	4139 (94%)	241 (6%)	0	100	100

There are no Ramachandran outliers to report.

5.3.2 Protein sidechains

In the following table, the Percentiles column shows the percent sidechain outliers of the chain as a percentile score with respect to all PDB entries followed by that with respect to all EM entries.

The Analysed column shows the number of residues for which the sidechain conformation was analysed, and the total number of residues.

Mol	Chain	Analysed	Rotameric	Outliers	Percentiles	
1	A	228/286 (80%)	228 (100%)	0	100	100
1	C	227/286 (79%)	226 (100%)	1 (0%)	84	83
1	G	229/286 (80%)	228 (100%)	1 (0%)	84	83
1	I	229/286 (80%)	227 (99%)	2 (1%)	70	77
2	B	214/243 (88%)	214 (100%)	0	100	100
2	D	214/243 (88%)	214 (100%)	0	100	100
2	H	214/243 (88%)	213 (100%)	1 (0%)	81	82
2	J	214/243 (88%)	214 (100%)	0	100	100
3	E	337/337 (100%)	337 (100%)	0	100	100
3	F	336/337 (100%)	333 (99%)	3 (1%)	70	77
3	K	337/337 (100%)	335 (99%)	2 (1%)	78	80
3	L	333/337 (99%)	333 (100%)	0	100	100
4	M	218/238 (92%)	218 (100%)	0	100	100
4	N	214/238 (90%)	214 (100%)	0	100	100
4	O	213/238 (90%)	211 (99%)	2 (1%)	70	77
4	P	217/238 (91%)	217 (100%)	0	100	100
All	All	3974/4416 (90%)	3962 (100%)	12 (0%)	84	85

5 of 12 residues with a non-rotameric sidechain are listed below:

Mol	Chain	Res	Type
1	I	149	PHE
3	K	1	MET
4	O	268	MET
3	K	302	MET
3	F	208	GLU

Sometimes sidechains can be flipped to improve hydrogen bonding and reduce clashes. 5 of 40 such sidechains are listed below:

Mol	Chain	Res	Type
2	J	214	ASN
3	L	24	ASN
2	J	217	GLN
3	K	143	GLN
3	L	126	GLN

5.3.3 RNA ⓘ

There are no RNA molecules in this entry.

5.4 Non-standard residues in protein, DNA, RNA chains ⓘ

There are no non-standard protein/DNA/RNA residues in this entry.

5.5 Carbohydrates ⓘ

There are no oligosaccharides in this entry.

5.6 Ligand geometry ⓘ

Of 6 ligands modelled in this entry, 4 are monoatomic - leaving 2 for Mogul analysis.

In the following table, the Counts columns list the number of bonds (or angles) for which Mogul statistics could be retrieved, the number of bonds (or angles) that are observed in the model and the number of bonds (or angles) that are defined in the Chemical Component Dictionary. The Link column lists molecule types, if any, to which the group is linked. The Z score for a bond length (or angle) is the number of standard deviations the observed value is removed from the expected value. A bond length (or angle) with $|Z| > 2$ is considered an outlier worth inspection. RMSZ is the root-mean-square of all Z scores of the bond lengths (or angles).

Mol	Type	Chain	Res	Link	Bond lengths			Bond angles		
					Counts	RMSZ	$\# Z > 2$	Counts	RMSZ	$\# Z > 2$
6	X8C	F	401	-	36,38,38	1.81	10 (27%)	48,54,54	2.14	14 (29%)
6	X8C	D	301	-	36,38,38	1.83	9 (25%)	48,54,54	2.12	15 (31%)

In the following table, the Chirals column lists the number of chiral outliers, the number of chiral centers analysed, the number of these observed in the model and the number defined in the Chemical Component Dictionary. Similar counts are reported in the Torsion and Rings columns. '-' means no outliers of that kind were identified.

Mol	Type	Chain	Res	Link	Chirals	Torsions	Rings
6	X8C	F	401	-	-	6/24/32/32	0/4/4/4
6	X8C	D	301	-	-	6/24/32/32	0/4/4/4

The worst 5 of 19 bond length outliers are listed below:

Mol	Chain	Res	Type	Atoms	Z	Observed(Å)	Ideal(Å)
6	F	401	X8C	CAF-NAH	5.64	1.46	1.34

Continued on next page...

Continued from previous page...

Mol	Chain	Res	Type	Atoms	Z	Observed(Å)	Ideal(Å)
6	D	301	X8C	CAF-NAH	5.63	1.45	1.34
6	F	401	X8C	CAP-NAO	4.58	1.45	1.37
6	D	301	X8C	CAP-NAO	4.52	1.45	1.37
6	D	301	X8C	NAE-NAD	3.24	1.41	1.37

The worst 5 of 29 bond angle outliers are listed below:

Mol	Chain	Res	Type	Atoms	Z	Observed(°)	Ideal(°)
6	F	401	X8C	CAM-CAN-CAI	5.28	119.07	110.66
6	F	401	X8C	CAK-CAJ-CAI	5.23	118.99	110.66
6	D	301	X8C	CAK-CAJ-CAI	5.15	118.86	110.66
6	F	401	X8C	CAA-NAE-NAD	-5.00	108.06	112.61
6	D	301	X8C	CAJ-CAK-NAL	4.78	119.82	110.81

There are no chirality outliers.

5 of 12 torsion outliers are listed below:

Mol	Chain	Res	Type	Atoms
6	D	301	X8C	NAO-CAP-CAR-CAS
6	D	301	X8C	NAO-CAP-CAR-CAW
6	D	301	X8C	OAQ-CAP-CAR-CAS
6	F	401	X8C	CAA-CAB-NAO-CAP
6	F	401	X8C	NAO-CAP-CAR-CAS

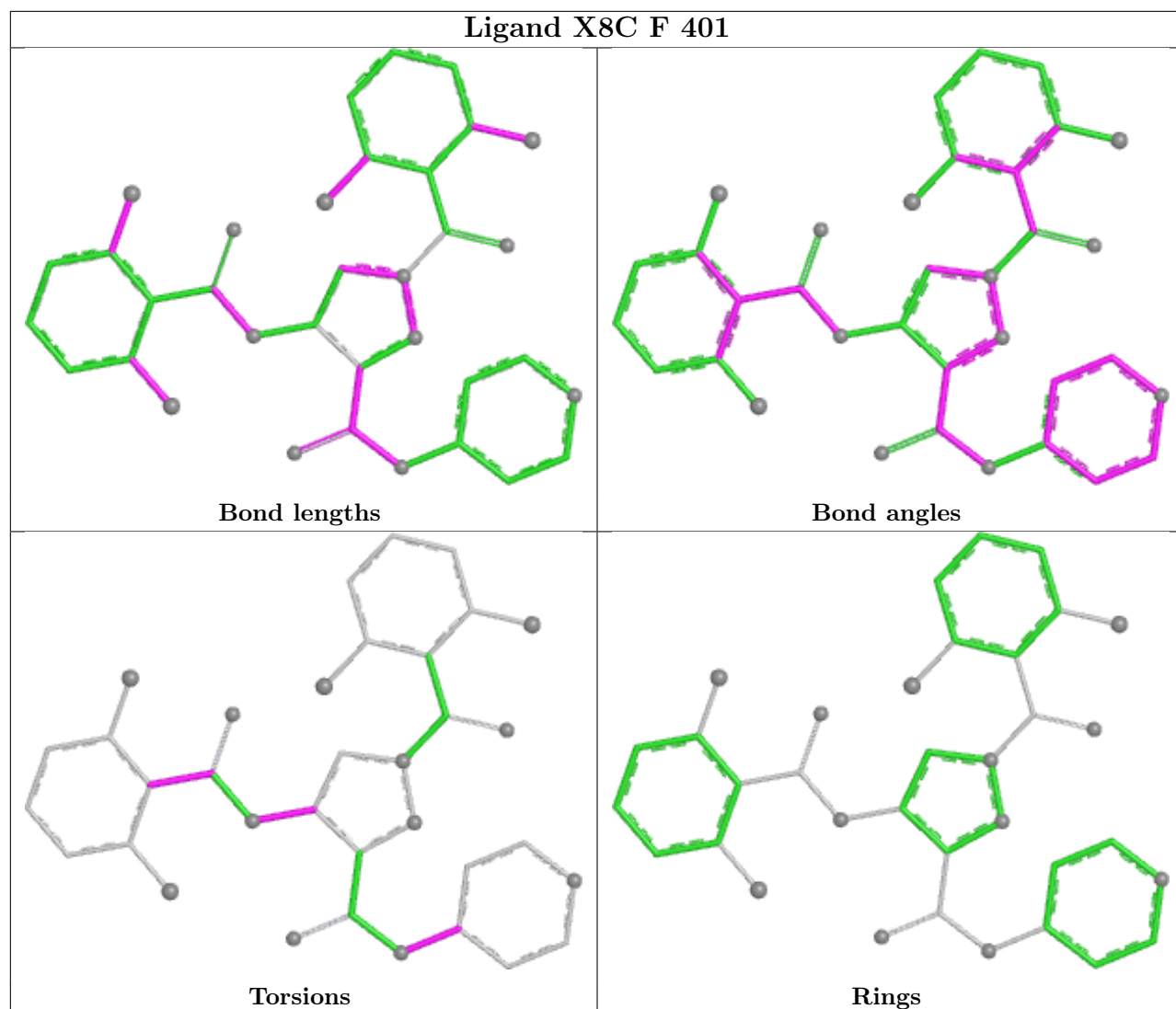
There are no ring outliers.

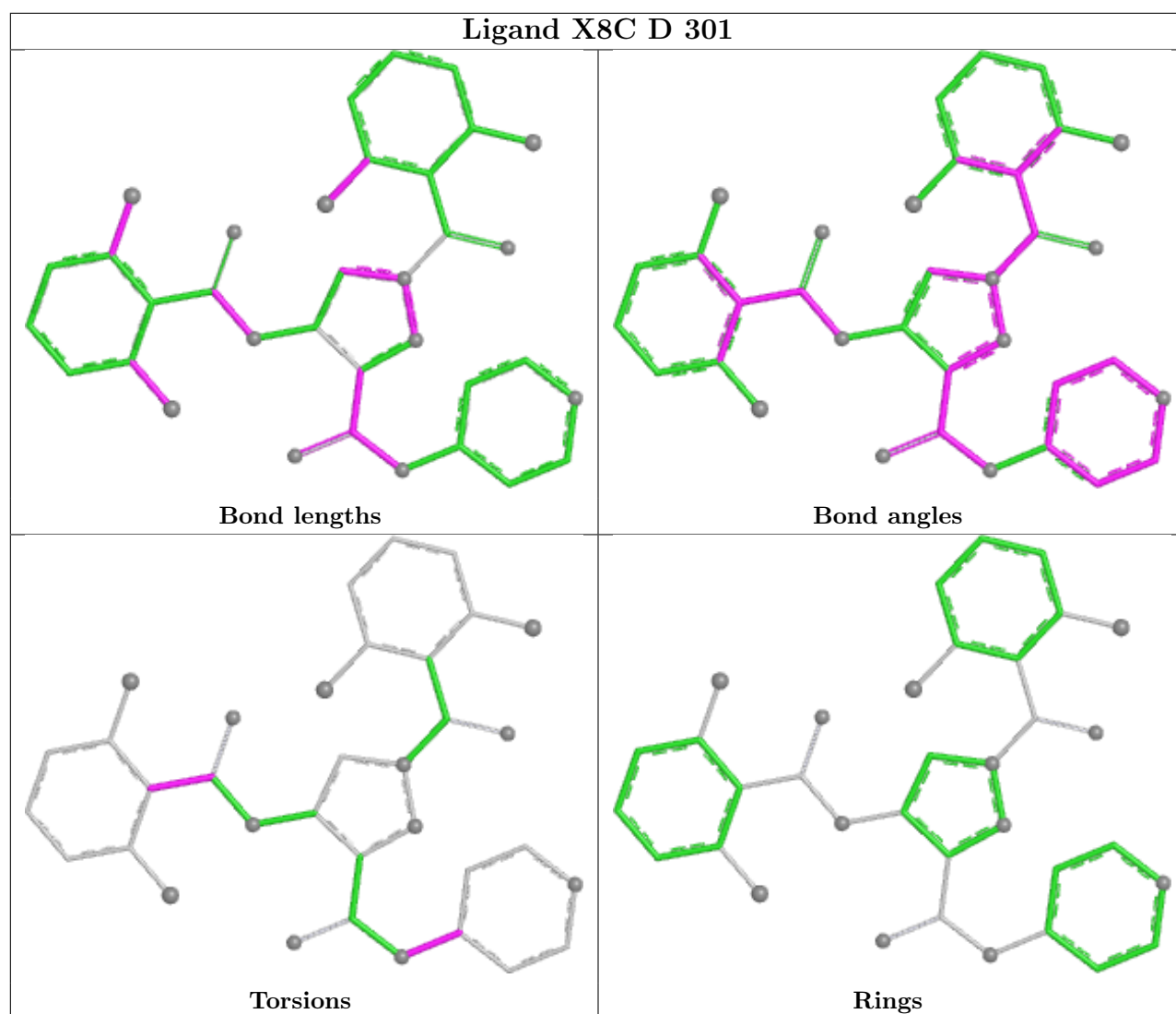
2 monomers are involved in 3 short contacts:

Mol	Chain	Res	Type	Clashes	Symm-Clashes
6	F	401	X8C	2	0
6	D	301	X8C	1	0

The following is a two-dimensional graphical depiction of Mogul quality analysis of bond lengths, bond angles, torsion angles, and ring geometry for all instances of the Ligand of Interest. In addition, ligands with molecular weight > 250 and outliers as shown on the validation Tables will also be included. For torsion angles, if less than 5% of the Mogul distribution of torsion angles is within 10 degrees of the torsion angle in question, then that torsion angle is considered an outlier. Any bond that is central to one or more torsion angles identified as an outlier by Mogul will be highlighted in the graph. For rings, the root-mean-square deviation (RMSD) between the ring in question and similar rings identified by Mogul is calculated over all ring torsion angles. If the average RMSD is greater than 60 degrees and the minimal RMSD between the ring in question and any Mogul-identified rings is also greater than 60 degrees, then that ring is considered an outlier. The outliers are highlighted in purple. The color gray indicates Mogul did not find sufficient

equivalents in the CSD to analyse the geometry.





5.7 Other polymers [i](#)

There are no such residues in this entry.

5.8 Polymer linkage issues [i](#)

There are no chain breaks in this entry.

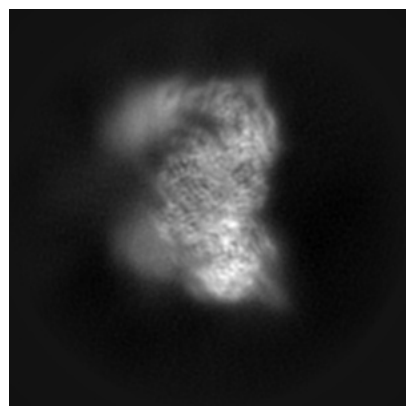
6 Map visualisation [i](#)

This section contains visualisations of the EMDB entry EMD-18009. These allow visual inspection of the internal detail of the map and identification of artifacts.

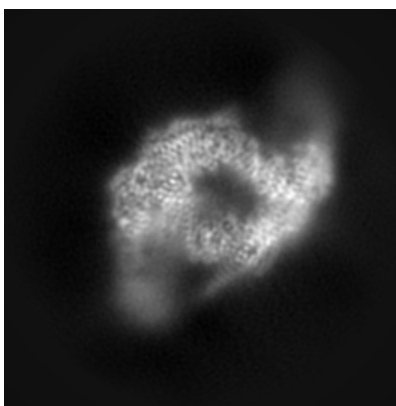
Images derived from a raw map, generated by summing the deposited half-maps, are presented below the corresponding image components of the primary map to allow further visual inspection and comparison with those of the primary map.

6.1 Orthogonal projections [i](#)

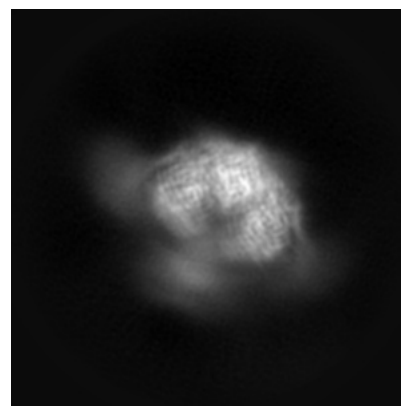
6.1.1 Primary map



X

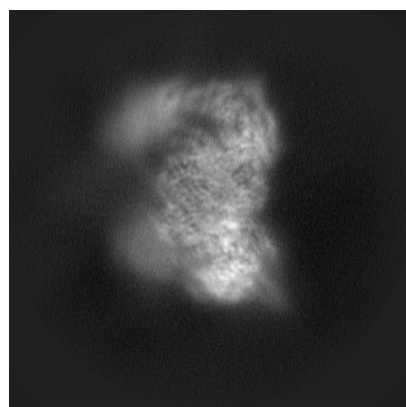


Y

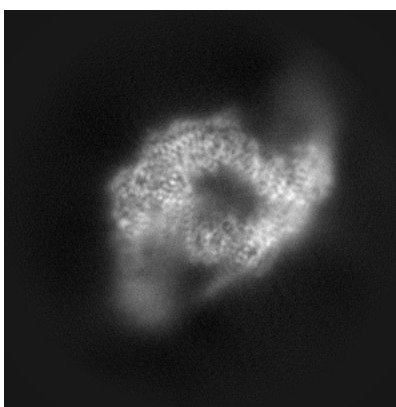


Z

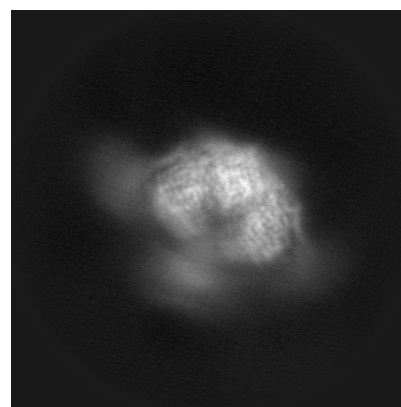
6.1.2 Raw map



X



Y

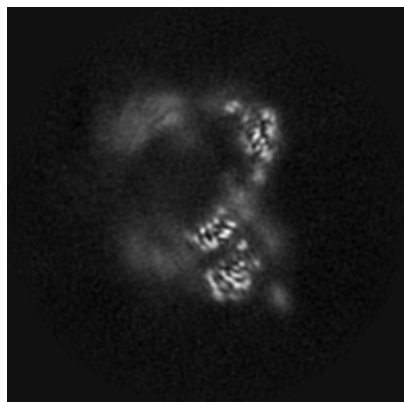


Z

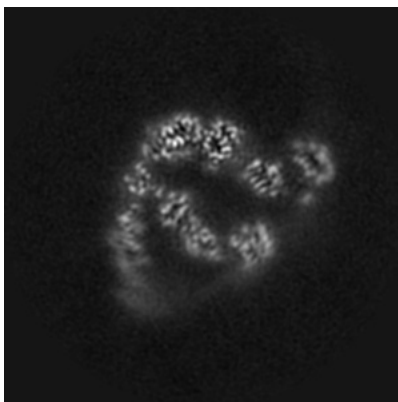
The images above show the map projected in three orthogonal directions.

6.2 Central slices [i](#)

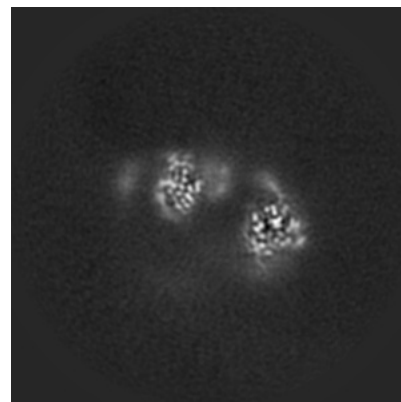
6.2.1 Primary map



X Index: 176

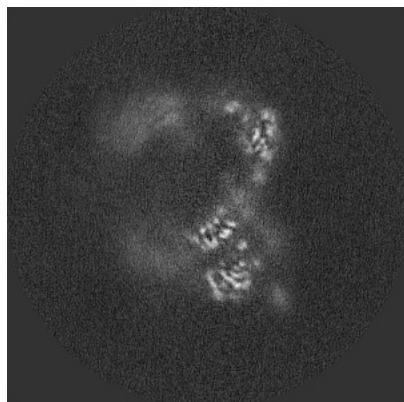


Y Index: 176

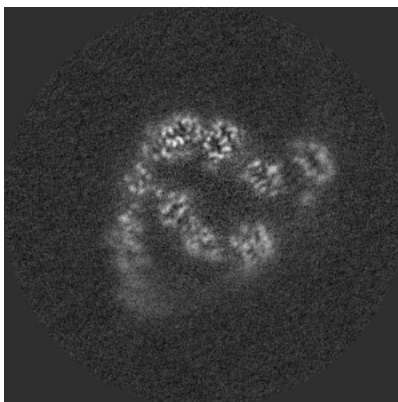


Z Index: 176

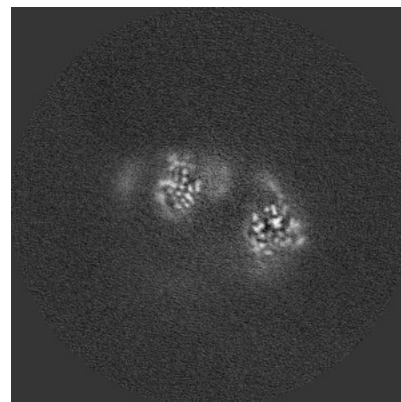
6.2.2 Raw map



X Index: 176



Y Index: 176

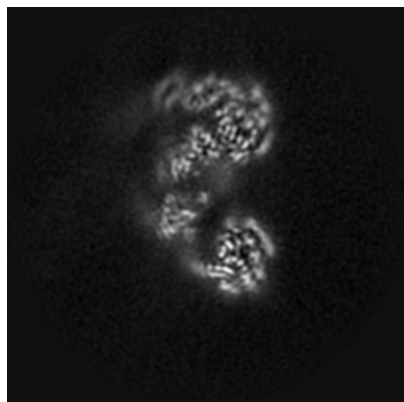


Z Index: 176

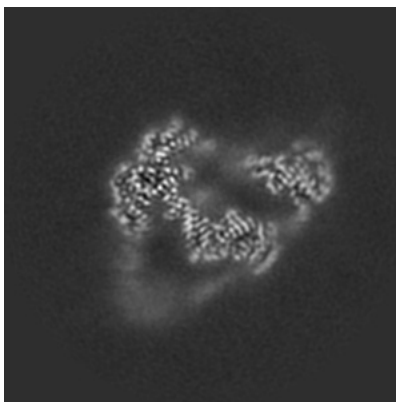
The images above show central slices of the map in three orthogonal directions.

6.3 Largest variance slices [i](#)

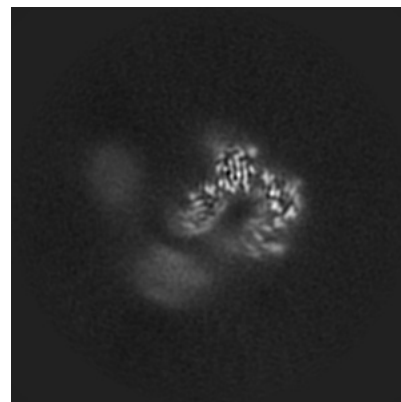
6.3.1 Primary map



X Index: 209

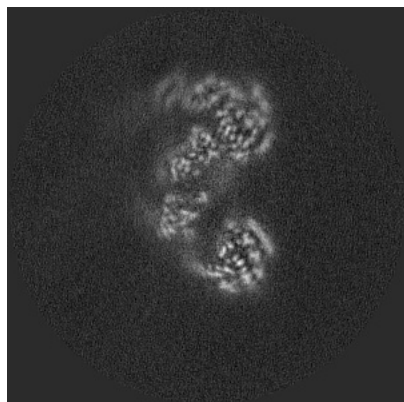


Y Index: 194

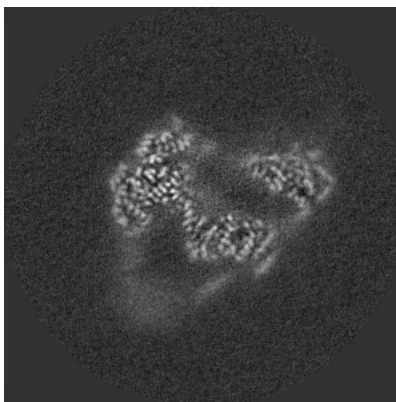


Z Index: 150

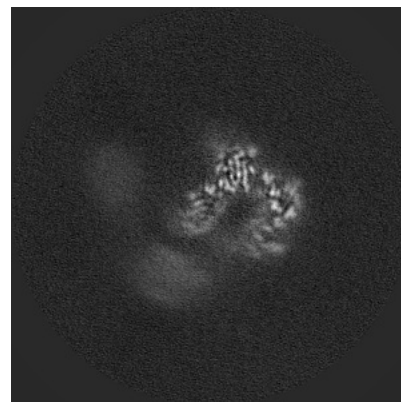
6.3.2 Raw map



X Index: 210



Y Index: 197

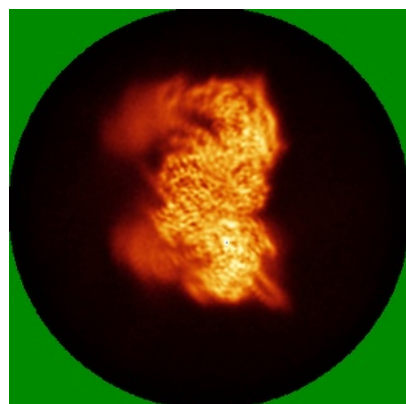


Z Index: 150

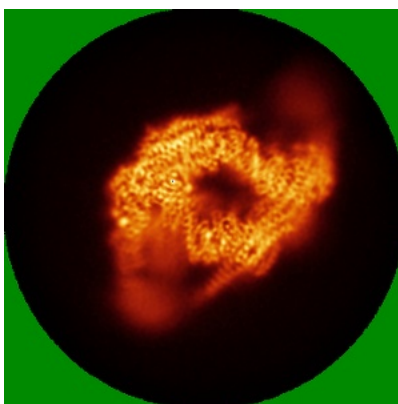
The images above show the largest variance slices of the map in three orthogonal directions.

6.4 Orthogonal standard-deviation projections (False-color) [i](#)

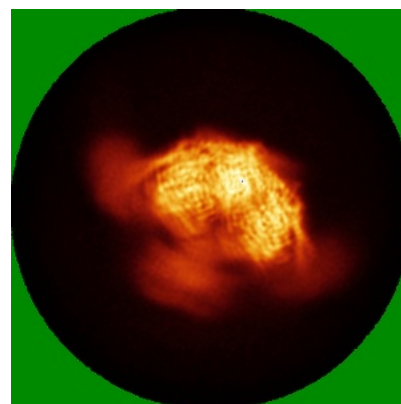
6.4.1 Primary map



X

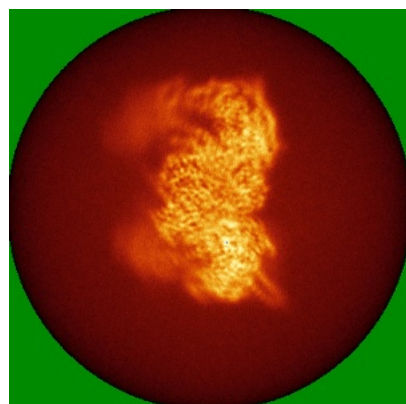


Y

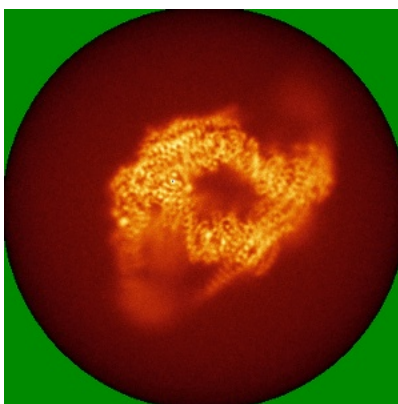


Z

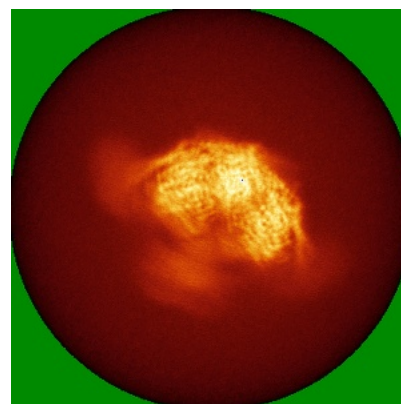
6.4.2 Raw map



X



Y



Z

The images above show the map standard deviation projections with false color in three orthogonal directions. Minimum values are shown in green, max in blue, and dark to light orange shades represent small to large values respectively.

6.5 Orthogonal surface views [i](#)

6.5.1 Primary map



The images above show the 3D surface view of the map at the recommended contour level 0.0095. These images, in conjunction with the slice images, may facilitate assessment of whether an appropriate contour level has been provided.

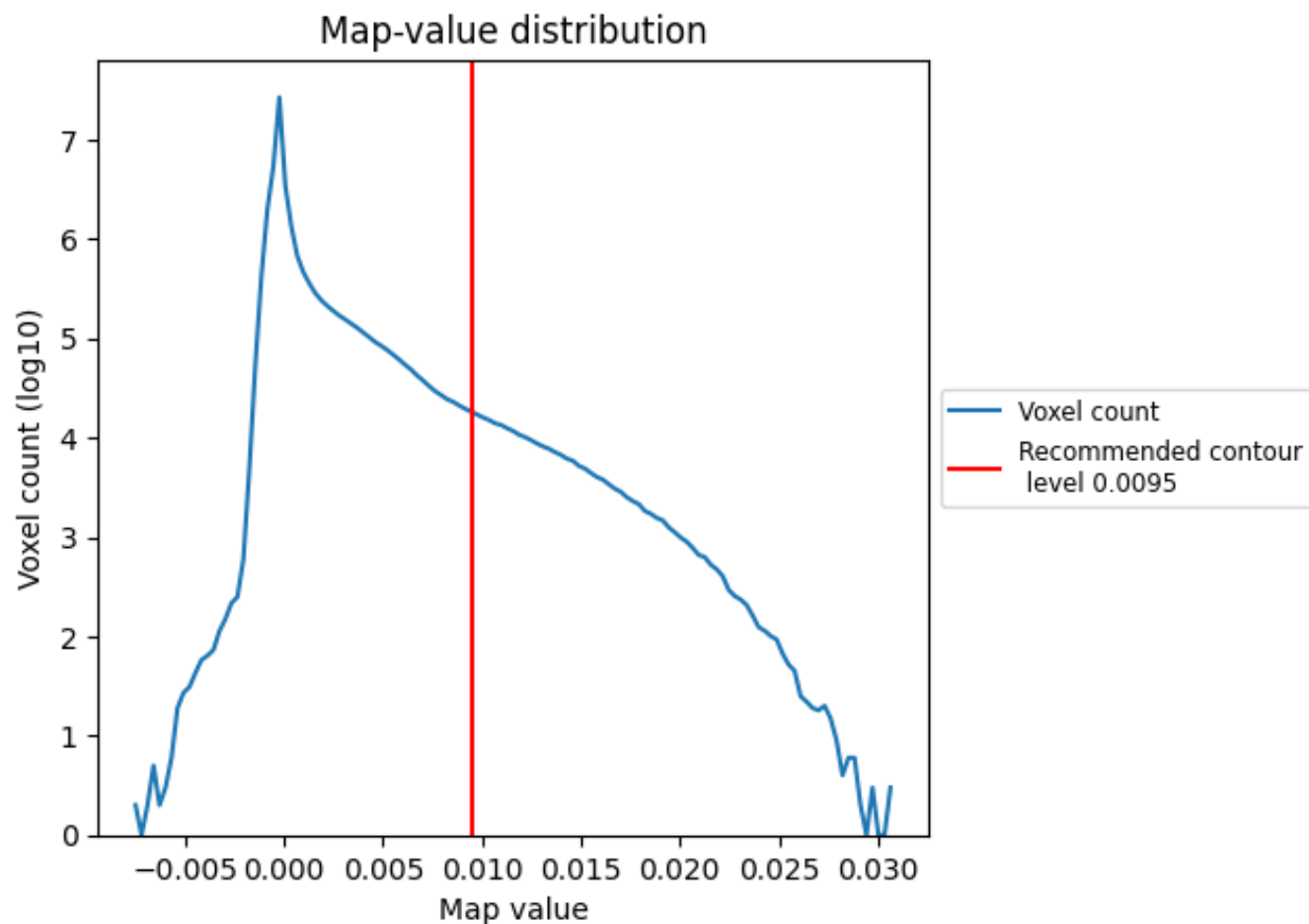
6.6 Mask visualisation [i](#)

This section was not generated. No masks/segmentation were deposited.

7 Map analysis [i](#)

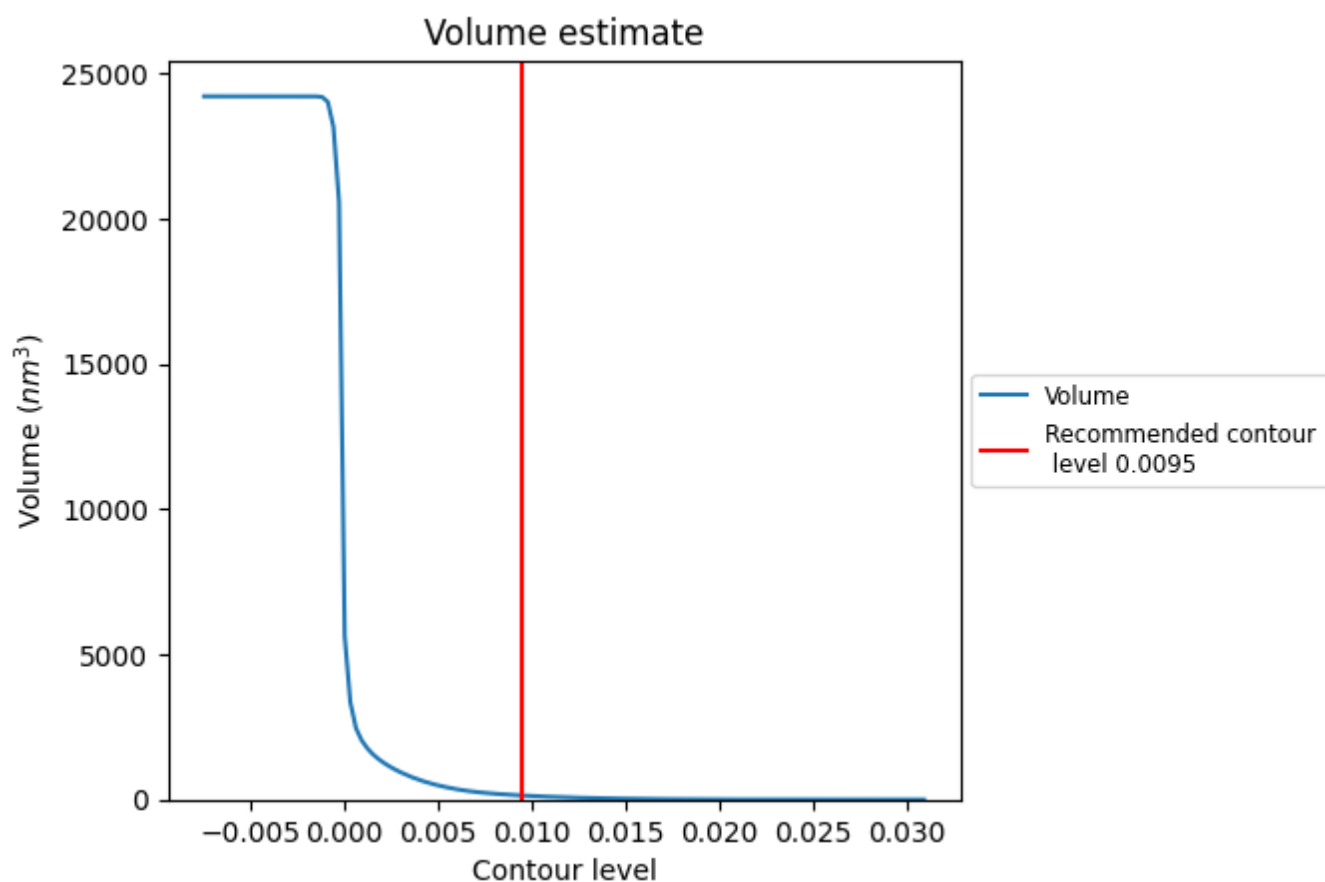
This section contains the results of statistical analysis of the map.

7.1 Map-value distribution [i](#)



The map-value distribution is plotted in 128 intervals along the x-axis. The y-axis is logarithmic. A spike in this graph at zero usually indicates that the volume has been masked.

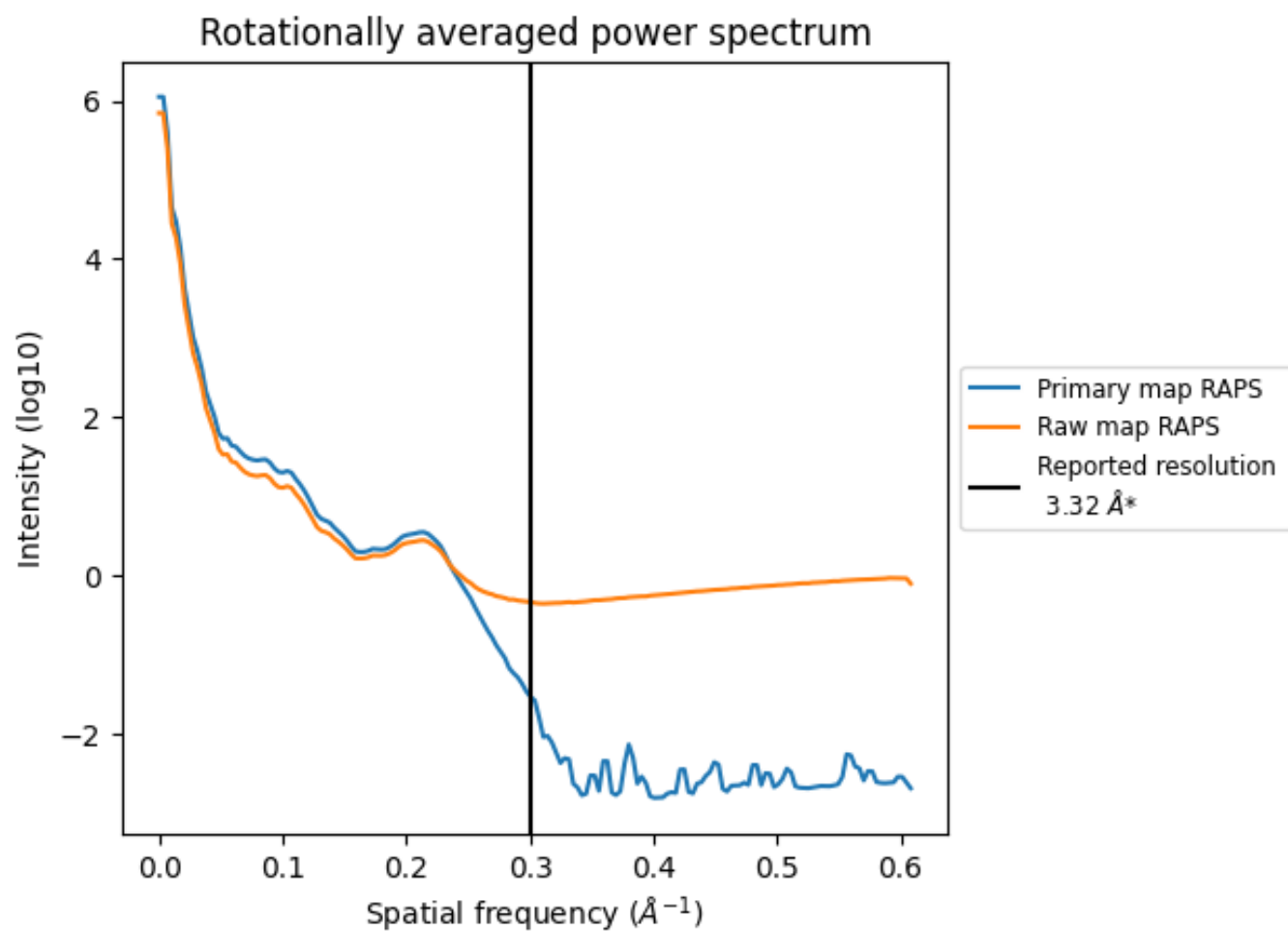
7.2 Volume estimate [i](#)



The volume at the recommended contour level is 139 nm³; this corresponds to an approximate mass of 126 kDa.

The volume estimate graph shows how the enclosed volume varies with the contour level. The recommended contour level is shown as a vertical line and the intersection between the line and the curve gives the volume of the enclosed surface at the given level.

7.3 Rotationally averaged power spectrum ⓘ

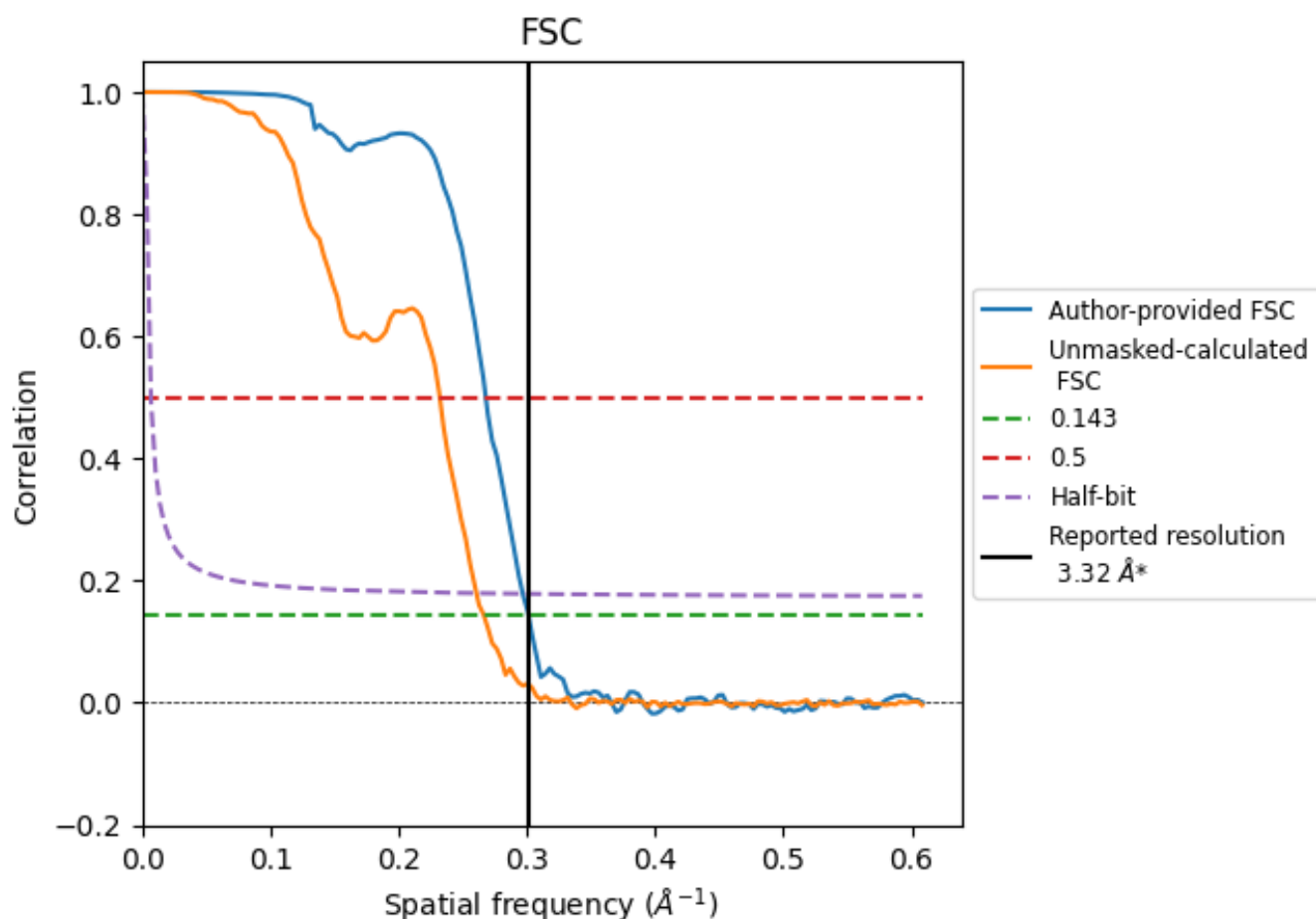


*Reported resolution corresponds to spatial frequency of 0.301 Å⁻¹

8 Fourier-Shell correlation [i](#)

Fourier-Shell Correlation (FSC) is the most commonly used method to estimate the resolution of single-particle and subtomogram-averaged maps. The shape of the curve depends on the imposed symmetry, mask and whether or not the two 3D reconstructions used were processed from a common reference. The reported resolution is shown as a black line. A curve is displayed for the half-bit criterion in addition to lines showing the 0.143 gold standard cut-off and 0.5 cut-off.

8.1 FSC [i](#)



*Reported resolution corresponds to spatial frequency of 0.301 Å⁻¹

8.2 Resolution estimates [i](#)

Resolution estimate (Å)	Estimation criterion (FSC cut-off)		
	0.143	0.5	Half-bit
Reported by author	3.32	-	-
Author-provided FSC curve	3.32	3.73	3.37
Unmasked-calculated*	3.75	4.31	3.84

*Resolution estimate based on FSC curve calculated by comparison of deposited half-maps. The value from deposited half-maps intersecting FSC 0.143 CUT-OFF 3.75 differs from the reported value 3.32 by more than 10 %

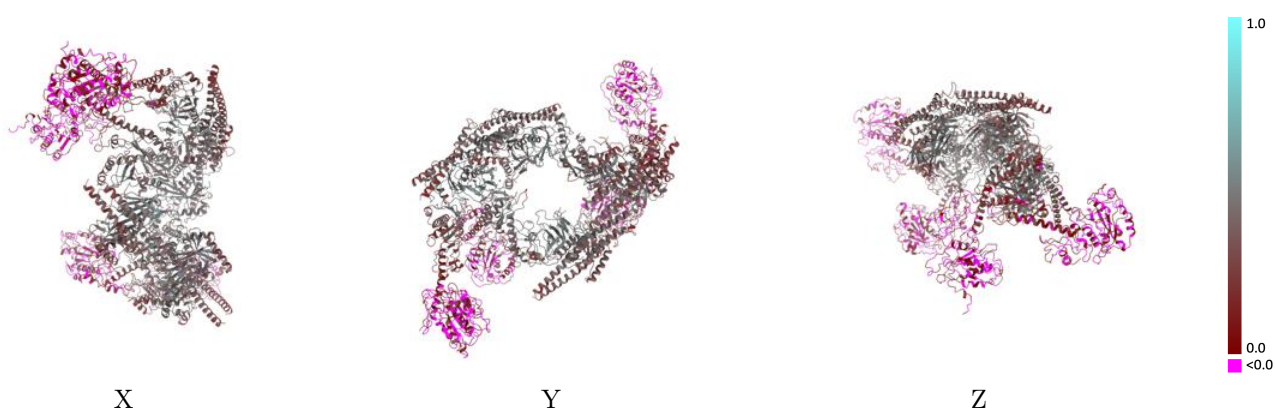
9 Map-model fit [i](#)

This section contains information regarding the fit between EMDB map EMD-18009 and PDB model 8PY2. Per-residue inclusion information can be found in section 3 on page 7.

9.1 Map-model overlay [i](#)

This section was not generated.

9.2 Q-score mapped to coordinate model [i](#)

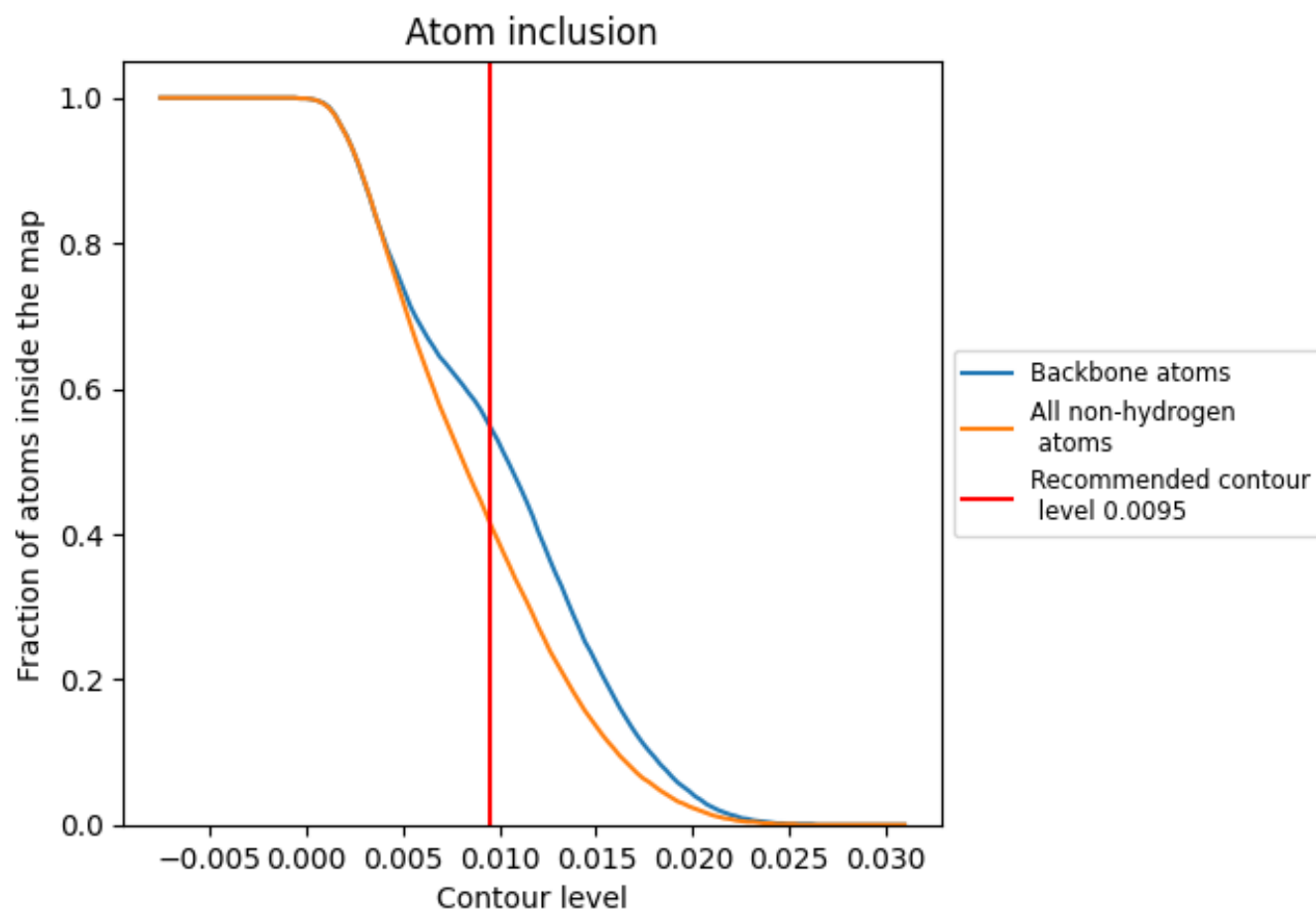


The images above show the model with each residue coloured according to its Q-score. This shows their resolvability in the map with higher Q-score values reflecting better resolvability. Please note: Q-score is calculating the resolvability of atoms, and thus high values are only expected at resolutions at which atoms can be resolved. Low Q-score values may therefore be expected for many entries.

9.3 Atom inclusion mapped to coordinate model [i](#)

This section was not generated.



































9.4 Atom inclusion [i](#)



At the recommended contour level, 55% of all backbone atoms, 42% of all non-hydrogen atoms, are inside the map.

9.5 Map-model fit summary

The table lists the average atom inclusion at the recommended contour level (0.0095) and Q-score for the entire model and for each chain.

Chain	Atom inclusion	Q-score
All	 0.4160	 0.2810
A	 0.7120	 0.4160
B	 0.7310	 0.4400
C	 0.7740	 0.4400
D	 0.7550	 0.4340
E	 0.2740	 0.2330
F	 0.3780	 0.3040
G	 0.6860	 0.4070
H	 0.6230	 0.3940
I	 0.6470	 0.4010
J	 0.7090	 0.4280
K	 0.4360	 0.3120
L	 0.1170	 0.1740
M	 0.0000	 0.0390
N	 0.0000	 0.0280
O	 0.0000	 0.0180
P	 0.0000	 0.0330

