



wwPDB X-ray Structure Validation Summary Report ⓘ

Mar 8, 2026 – 02:03 AM UTC

PDB ID : 6PP3 / pdb_00006pp3
Title : Structure of human endothelial nitric oxide synthase heme domain in complex with 7-(3-(Aminomethyl)-4-(pyridin-2-ylmethoxy)phenyl)-4-methylquinolin-2-amine
Authors : Li, H.; Poulos, T.L.
Deposited on : 2019-07-05
Resolution : 1.95 Å(reported)

This is a wwPDB X-ray Structure Validation Summary Report for a publicly released PDB entry.

We welcome your comments at validation@mail.wwpdb.org

A user guide is available at

<https://www.wwpdb.org/validation/2017/XrayValidationReportHelp>

with specific help available everywhere you see the ⓘ symbol.

The types of validation reports are described at

<http://www.wwpdb.org/validation/2017/FAQs#types>.

The following versions of software and data (see [references ⓘ](#)) were used in the production of this report:

MolProbity : 4-5-2 with Phenix2.0
Mogul : 2022.3.0, CSD as543be (2022)
Xtrriage (Phenix) : 2.0
EDS : 3.0
Buster-report : wwPDB partial adaption of 1.1.7 (2018)
Percentile statistics : 20250101.v01 (using entries in the PDB archive January 1st 2025)
CCP4 : 9.0.010 (Gargrove)
Density-Fitness : 1.0.12
Ideal geometry (proteins) : Engh & Huber (2001)
Ideal geometry (DNA, RNA) : Parkinson et al. (1996)
Validation Pipeline (wwPDB-VP) : 2.49

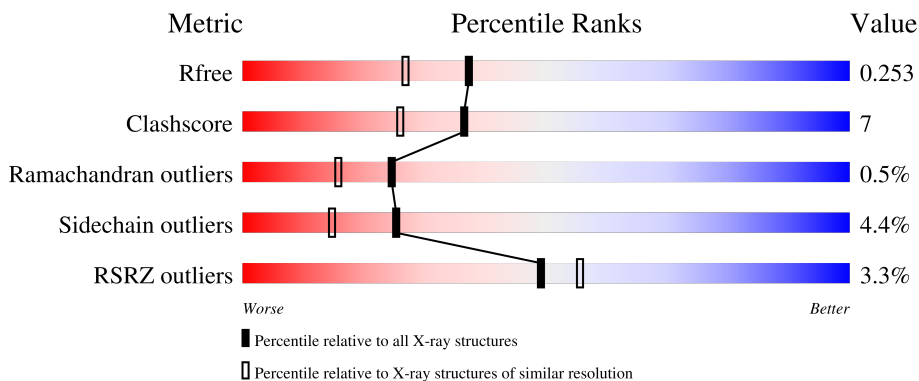
1 Overall quality at a glance

The following experimental techniques were used to determine the structure:

X-RAY DIFFRACTION

The reported resolution of this entry is 1.95 Å.

Percentile scores (ranging between 0-100) for global validation metrics of the entry are shown in the following graphic. The table shows the number of entries on which the scores are based.



Metric	Whole archive (#Entries)	Similar resolution (#Entries, resolution range(Å))
R_{free}	180053	3494 (1.96-1.96)
Clashscore	190562	3612 (1.96-1.96)
Ramachandran outliers	187476	3587 (1.96-1.96)
Sidechain outliers	187428	3587 (1.96-1.96)
RSRZ outliers	180081	3495 (1.96-1.96)

The table below summarises the geometric issues observed across the polymeric chains and their fit to the electron density. The red, orange, yellow and green segments of the lower bar indicate the fraction of residues that contain outliers for ≥ 3 , 2, 1 and 0 types of geometric quality criteria respectively. A grey segment represents the fraction of residues that are not modelled. The numeric value for each fraction is indicated below the corresponding segment, with a dot representing fractions $\leq 5\%$. The upper red bar (where present) indicates the fraction of residues that have poor fit to the electron density. The numeric value is given above the bar.

Mol	Chain	Length	Quality of chain
1	A	440	 9% 66% 22% • 9%
1	B	440	 % 75% 14% • 9%
1	C	440	 2% 79% 10% • 9%
1	D	440	 % 79% 12% 9%

2 Entry composition

There are 10 unique types of molecules in this entry. The entry contains 13906 atoms, of which 0 are hydrogens and 0 are deuteriums.

In the tables below, the ZeroOcc column contains the number of atoms modelled with zero occupancy, the AltConf column contains the number of residues with at least one atom in alternate conformation and the Trace column contains the number of residues modelled with at most 2 atoms.

- Molecule 1 is a protein called Nitric oxide synthase, endothelial.

Mol	Chain	Residues	Atoms					ZeroOcc	AltConf	Trace
			Total	C	N	O	S			
1	A	401	3215	2047	566	586	16	0	2	0
1	B	402	3225	2054	566	589	16	0	4	0
1	C	401	3209	2044	563	586	16	0	2	0
1	D	401	3206	2042	563	585	16	0	2	0

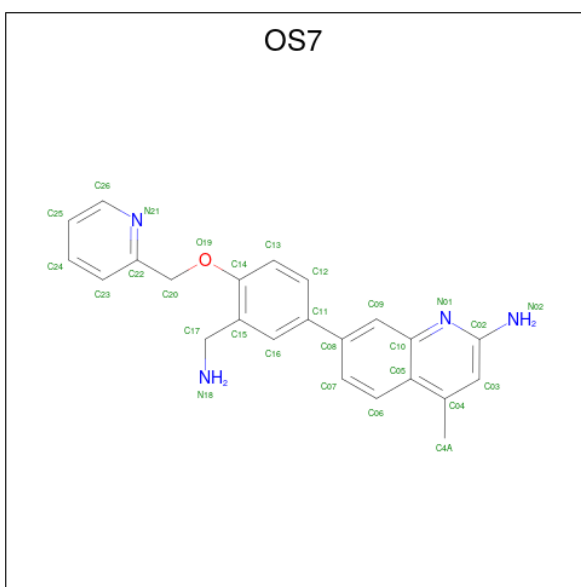
There are 4 discrepancies between the modelled and reference sequences:

Chain	Residue	Modelled	Actual	Comment	Reference
A	298	GLU	ASP	variant	UNP P29474
B	298	GLU	ASP	variant	UNP P29474
C	298	GLU	ASP	variant	UNP P29474
D	298	GLU	ASP	variant	UNP P29474

- Molecule 2 is PROTOPORPHYRIN IX CONTAINING FE (CCD ID: HEM) (formula: $C_{34}H_{32}FeN_4O_4$).

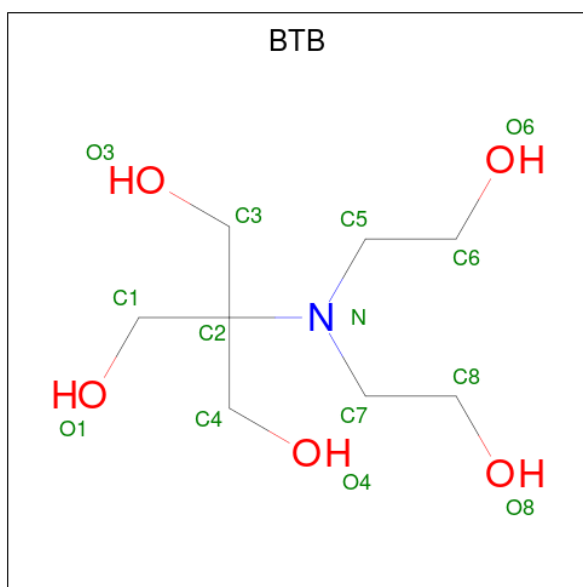
Mol	Chain	Residues	Atoms				ZeroOcc	AltConf
3	A	1	Total	C	N	O	0	0
			17	9	5	3		
3	B	1	Total	C	N	O	0	0
			17	9	5	3		
3	C	1	Total	C	N	O	0	0
			17	9	5	3		
3	D	1	Total	C	N	O	0	0
			17	9	5	3		

- Molecule 4 is 7-{3-(aminomethyl)-4-[(pyridin-2-yl)methoxy]phenyl}-4-methylquinolin-2-amine (CCD ID: OS7) (formula: C₂₃H₂₂N₄O) (labeled as "Ligand of Interest" by depositor).



Mol	Chain	Residues	Atoms				ZeroOcc	AltConf
4	A	1	Total	C	N	O	0	0
			28	23	4	1		
4	B	1	Total	C	N	O	0	0
			28	23	4	1		
4	C	1	Total	C	N	O	0	0
			28	23	4	1		
4	D	1	Total	C	N	O	0	0
			28	23	4	1		

- Molecule 5 is 2-[BIS-(2-HYDROXY-ETHYL)-AMINO]-2-HYDROXYMETHYL-PROPAN E-1,3-DIOL (CCD ID: BTB) (formula: C₈H₁₉NO₅).



Mol	Chain	Residues	Atoms				ZeroOcc	AltConf
			Total	C	N	O		
5	A	1	14	8	1	5	0	0
5	A	1	14	8	1	5	0	0
5	A	1	14	8	1	5	0	0
5	B	1	14	8	1	5	0	0
5	B	1	14	8	1	5	0	0
5	B	1	14	8	1	5	0	0
5	B	1	14	8	1	5	0	0
5	B	1	14	8	1	5	0	0
5	B	1	14	8	1	5	0	0
5	C	1	14	8	1	5	0	0
5	D	1	14	8	1	5	0	0
5	D	1	14	8	1	5	0	0

- Molecule 6 is ZINC ION (CCD ID: ZN) (formula: Zn).

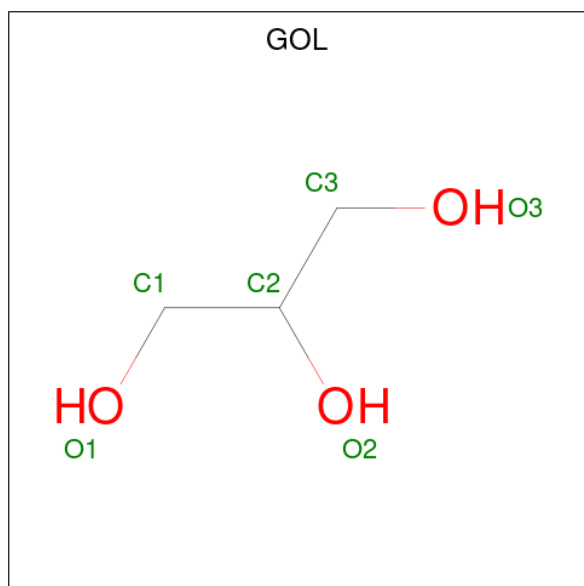
Mol	Chain	Residues	Atoms		ZeroOcc	AltConf
			Total	Zn		
6	A	1	1	1	0	0

Continued on next page...

Continued from previous page...

Mol	Chain	Residues	Atoms		ZeroOcc	AltConf
6	C	1	Total	Zn	0	0
			1	1		

- Molecule 7 is GLYCEROL (CCD ID: GOL) (formula: C₃H₈O₃).



Mol	Chain	Residues	Atoms			ZeroOcc	AltConf
7	A	1	Total	C	O	0	0
			6	3	3		
7	C	1	Total	C	O	0	0
			6	3	3		

- Molecule 8 is CHLORIDE ION (CCD ID: CL) (formula: Cl).

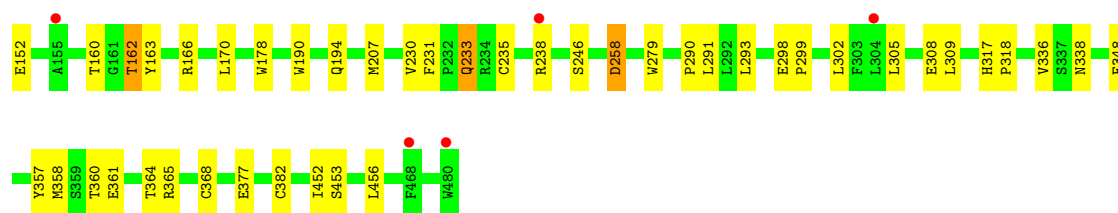
Mol	Chain	Residues	Atoms		ZeroOcc	AltConf
8	A	1	Total	Cl	0	0
			1	1		
8	B	1	Total	Cl	0	0
			1	1		
8	C	1	Total	Cl	0	0
			1	1		
8	D	1	Total	Cl	0	0
			1	1		

- Molecule 9 is GADOLINIUM ATOM (CCD ID: GD) (formula: Gd).

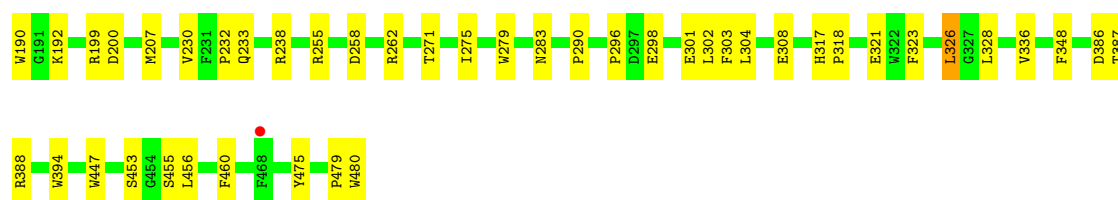
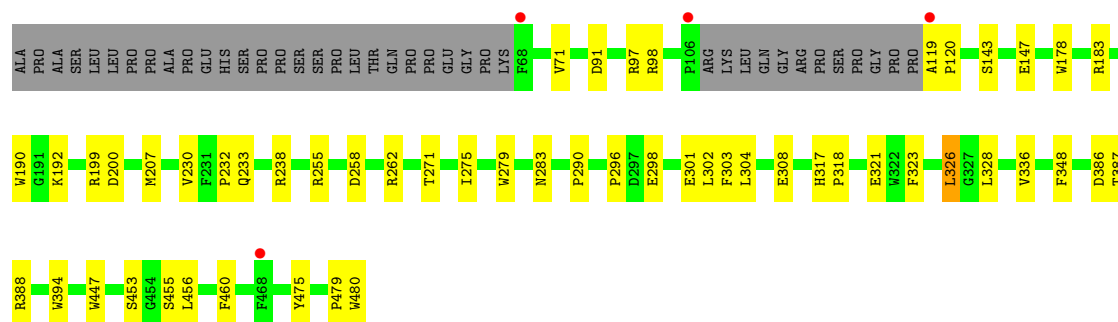
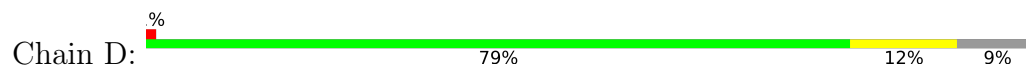
Mol	Chain	Residues	Atoms	ZeroOcc	AltConf
9	A	1	Total Gd 1 1	0	0
9	B	2	Total Gd 2 2	0	0
9	D	1	Total Gd 1 1	0	0

- Molecule 10 is water.

Mol	Chain	Residues	Atoms	ZeroOcc	AltConf
10	A	66	Total O 66 66	0	0
10	B	168	Total O 168 168	0	0
10	C	121	Total O 121 121	0	0
10	D	168	Total O 168 168	0	0



● Molecule 1: Nitric oxide synthase, endothelial



4 Data and refinement statistics

Property	Value	Source
Space group	P 1 21 1	Depositor
Cell constants a, b, c, α , β , γ	59.87Å 152.08Å 108.58Å 90.00° 90.91° 90.00°	Depositor
Resolution (Å)	49.86 – 1.95 49.86 – 1.95	Depositor EDS
% Data completeness (in resolution range)	99.8 (49.86-1.95) 99.7 (49.86-1.95)	Depositor EDS
R_{merge}	0.16	Depositor
R_{sym}	0.16	Depositor
$\langle I/\sigma(I) \rangle$ ¹	1.12 (at 1.95Å)	Xtrriage
Refinement program	PHENIX (1.11.1_2575: ???)	Depositor
R, R_{free}	0.211 , 0.260 0.203 , 0.253	Depositor DCC
R_{free} test set	7064 reflections (3.81%)	wwPDB-VP
Wilson B-factor (Å ²)	36.0	Xtrriage
Anisotropy	0.552	Xtrriage
Bulk solvent k_{sol} (e/Å ³), B_{sol} (Å ²)	0.36 , 50.9	EDS
L-test for twinning ²	$\langle L \rangle = 0.46$, $\langle L^2 \rangle = 0.29$	Xtrriage
Estimated twinning fraction	0.107 for h,-k,-l	Xtrriage
F_o, F_c correlation	0.96	EDS
Total number of atoms	13906	wwPDB-VP
Average B, all atoms (Å ²)	55.0	wwPDB-VP

Xtrriage's analysis on translational NCS is as follows: *The largest off-origin peak in the Patterson function is 3.05% of the height of the origin peak. No significant pseudotranslation is detected.*

¹Intensities estimated from amplitudes.

²Theoretical values of $\langle |L| \rangle$, $\langle L^2 \rangle$ for acentric reflections are 0.5, 0.333 respectively for untwinned datasets, and 0.375, 0.2 for perfectly twinned datasets.

5 Model quality [i](#)

5.1 Standard geometry [i](#)

Bond lengths and bond angles in the following residue types are not validated in this section: CL, HEM, ZN, H4B, GD, BTB, OS7, GOL

The Z score for a bond length (or angle) is the number of standard deviations the observed value is removed from the expected value. A bond length (or angle) with $|Z| > 5$ is considered an outlier worth inspection. RMSZ is the root-mean-square of all Z scores of the bond lengths (or angles).

Mol	Chain	Bond lengths		Bond angles	
		RMSZ	# Z >5	RMSZ	# Z >5
1	A	0.27	0/3313	0.49	0/4513
1	B	0.34	0/3329	0.54	0/4536
1	C	0.29	0/3307	0.48	0/4507
1	D	0.38	0/3304	0.57	0/4503
All	All	0.32	0/13253	0.52	0/18059

There are no bond length outliers.

There are no bond angle outliers.

There are no chirality outliers.

There are no planarity outliers.

5.2 Too-close contacts [i](#)

In the following table, the Non-H and H(model) columns list the number of non-hydrogen atoms and hydrogen atoms in the chain respectively. The H(added) column lists the number of hydrogen atoms added and optimized by MolProbity. The Clashes column lists the number of clashes within the asymmetric unit, whereas Symm-Clashes lists symmetry-related clashes.

Mol	Chain	Non-H	H(model)	H(added)	Clashes	Symm-Clashes
1	A	3215	0	3118	64	0
1	B	3225	0	3131	49	0
1	C	3209	0	3109	27	1
1	D	3206	0	3108	29	0
2	A	43	0	30	4	0
2	B	43	0	30	3	0
2	C	43	0	30	3	0
2	D	43	0	30	2	0
3	A	17	0	15	1	0

Continued on next page...

Continued from previous page...

Mol	Chain	Non-H	H(model)	H(added)	Clashes	Symm-Clashes
3	B	17	0	15	1	0
3	C	17	0	15	1	0
3	D	17	0	15	0	0
4	A	28	0	0	1	0
4	B	28	0	0	2	0
4	C	28	0	0	4	0
4	D	28	0	0	1	0
5	A	42	0	56	7	0
5	B	70	0	93	11	1
5	C	14	0	19	3	0
5	D	28	0	37	6	0
6	A	1	0	0	0	0
6	C	1	0	0	0	0
7	A	6	0	8	0	0
7	C	6	0	8	0	0
8	A	1	0	0	0	0
8	B	1	0	0	0	0
8	C	1	0	0	0	0
8	D	1	0	0	0	0
9	A	1	0	0	0	0
9	B	2	0	0	0	0
9	D	1	0	0	0	0
10	A	66	0	0	2	0
10	B	168	0	0	0	0
10	C	121	0	0	1	0
10	D	168	0	0	4	0
All	All	13906	0	12867	188	1

The all-atom clashscore is defined as the number of clashes found per 1000 atoms (including hydrogen atoms). The all-atom clashscore for this structure is 7.

The worst 5 of 188 close contacts within the same asymmetric unit are listed below, sorted by their clash magnitude.

Atom-1	Atom-2	Interatomic distance (Å)	Clash overlap (Å)
1:B:257:GLN:HA	1:B:259:GLY:H	1.38	0.87
1:C:128:ARG:O	1:C:132:ASN:ND2	2.13	0.81
1:A:147:GLU:O	1:A:151:GLN:NE2	2.15	0.79
1:A:312:GLU:OE2	1:A:329:ARG:NH1	2.14	0.78
1:A:322:TRP:CD1	5:A:504:BTB:H62	2.21	0.76

All (1) symmetry-related close contacts are listed below. The label for Atom-2 includes the sym-

metry operator and encoded unit-cell translations to be applied.

Atom-1	Atom-2	Interatomic distance (Å)	Clash overlap (Å)
1:C:152:GLU:OE2	5:B:505:BTB:O3[2_842]	2.16	0.04

5.3 Torsion angles [i](#)

5.3.1 Protein backbone [i](#)

In the following table, the Percentiles column shows the percent Ramachandran outliers of the chain as a percentile score with respect to all X-ray entries followed by that with respect to entries of similar resolution.

The Analysed column shows the number of residues for which the backbone conformation was analysed, and the total number of residues.

Mol	Chain	Analysed	Favoured	Allowed	Outliers	Percentiles
1	A	399/440 (91%)	373 (94%)	20 (5%)	6 (2%)	8 2
1	B	402/440 (91%)	393 (98%)	8 (2%)	1 (0%)	43 36
1	C	399/440 (91%)	385 (96%)	13 (3%)	1 (0%)	36 28
1	D	399/440 (91%)	392 (98%)	7 (2%)	0	100 100
All	All	1599/1760 (91%)	1543 (96%)	48 (3%)	8 (0%)	24 16

5 of 8 Ramachandran outliers are listed below:

Mol	Chain	Res	Type
1	A	144	GLN
1	A	239	GLY
1	B	259	GLY
1	A	90	GLN
1	A	276	GLN

5.3.2 Protein sidechains [i](#)

In the following table, the Percentiles column shows the percent sidechain outliers of the chain as a percentile score with respect to all X-ray entries followed by that with respect to entries of similar resolution.

The Analysed column shows the number of residues for which the sidechain conformation was analysed, and the total number of residues.

Mol	Chain	Analysed	Rotameric	Outliers	Percentiles	
1	A	343/373 (92%)	318 (93%)	25 (7%)	13	4
1	B	345/373 (92%)	331 (96%)	14 (4%)	27	17
1	C	342/373 (92%)	329 (96%)	13 (4%)	29	19
1	D	342/373 (92%)	333 (97%)	9 (3%)	40	33
All	All	1372/1492 (92%)	1311 (96%)	61 (4%)	25	15

5 of 61 residues with a non-rotameric sidechain are listed below:

Mol	Chain	Res	Type
1	B	122	GLN
1	D	192	LYS
1	B	255	ARG
1	D	98	ARG
1	D	258	ASP

Sometimes sidechains can be flipped to improve hydrogen bonding and reduce clashes. 5 of 10 such sidechains are listed below:

Mol	Chain	Res	Type
1	C	256	GLN
1	C	267	ASN
1	D	433	ASN
1	B	122	GLN
1	B	256	GLN

5.3.3 RNA [i](#)

There are no RNA molecules in this entry.

5.4 Non-standard residues in protein, DNA, RNA chains [i](#)

There are no non-standard protein/DNA/RNA residues in this entry.

5.5 Carbohydrates [i](#)

There are no oligosaccharides in this entry.

5.6 Ligand geometry

Of 35 ligands modelled in this entry, 10 are monoatomic - leaving 25 for Mogul analysis.

In the following table, the Counts columns list the number of bonds (or angles) for which Mogul statistics could be retrieved, the number of bonds (or angles) that are observed in the model and the number of bonds (or angles) that are defined in the Chemical Component Dictionary. The Link column lists molecule types, if any, to which the group is linked. The Z score for a bond length (or angle) is the number of standard deviations the observed value is removed from the expected value. A bond length (or angle) with $|Z| > 2$ is considered an outlier worth inspection. RMSZ is the root-mean-square of all Z scores of the bond lengths (or angles).

Mol	Type	Chain	Res	Link	Bond lengths			Bond angles		
					Counts	RMSZ	# Z > 2	Counts	RMSZ	# Z > 2
5	BTB	D	505	-	13,13,13	0.61	0	7,16,16	1.09	1 (14%)
2	HEM	D	501	1	50,50,50	1.73	9 (18%)	67,82,82	1.30	7 (10%)
5	BTB	B	509	9	13,13,13	0.38	0	7,16,16	1.08	1 (14%)
7	GOL	A	508	-	5,5,5	0.37	0	5,5,5	0.35	0
3	H4B	C	502	-	17,18,18	0.90	0	14,26,26	1.74	4 (28%)
7	GOL	C	506	-	5,5,5	0.40	0	5,5,5	0.29	0
4	OS7	D	503	-	31,31,31	0.90	2 (6%)	42,43,43	1.67	8 (19%)
3	H4B	B	502	-	17,18,18	0.87	0	14,26,26	1.80	3 (21%)
5	BTB	B	506	-	13,13,13	0.39	0	7,16,16	0.46	0
4	OS7	A	503	-	31,31,31	0.83	2 (6%)	42,43,43	1.54	7 (16%)
4	OS7	B	503	-	31,31,31	0.96	3 (9%)	42,43,43	1.91	10 (23%)
5	BTB	A	504	9	13,13,13	0.53	0	7,16,16	1.29	1 (14%)
5	BTB	A	506	-	13,13,13	0.35	0	7,16,16	0.49	0
2	HEM	B	501	1	50,50,50	1.69	8 (16%)	67,82,82	1.42	10 (14%)
5	BTB	A	505	-	13,13,13	0.46	0	7,16,16	0.62	0
4	OS7	C	503	-	31,31,31	0.79	0	42,43,43	1.47	5 (11%)
5	BTB	B	505	-	13,13,13	0.42	0	7,16,16	0.59	0
2	HEM	A	501	1	50,50,50	1.61	7 (14%)	67,82,82	1.36	9 (13%)
5	BTB	C	504	-	13,13,13	0.45	0	7,16,16	0.47	0
5	BTB	B	510	-	13,13,13	0.88	1 (7%)	7,16,16	1.23	1 (14%)
3	H4B	D	502	-	17,18,18	0.97	2 (11%)	14,26,26	1.74	4 (28%)
2	HEM	C	501	1	50,50,50	1.72	10 (20%)	67,82,82	1.51	10 (14%)
5	BTB	B	504	9	13,13,13	0.37	0	7,16,16	0.49	0
5	BTB	D	504	9	13,13,13	0.43	0	7,16,16	0.37	0
3	H4B	A	502	-	17,18,18	0.88	0	14,26,26	1.79	4 (28%)

In the following table, the Chirals column lists the number of chiral outliers, the number of chiral centers analysed, the number of these observed in the model and the number defined in the

Chemical Component Dictionary. Similar counts are reported in the Torsion and Rings columns.
'-' means no outliers of that kind were identified.

Mol	Type	Chain	Res	Link	Chirals	Torsions	Rings
5	BTB	D	505	-	-	13/21/21/21	-
2	HEM	D	501	1	-	0/14/54/54	-
5	BTB	B	509	9	-	3/21/21/21	-
7	GOL	A	508	-	-	4/4/4/4	-
3	H4B	C	502	-	-	0/8/17/17	0/2/2/2
7	GOL	C	506	-	-	2/4/4/4	-
4	OS7	D	503	-	-	7/11/11/11	0/4/4/4
3	H4B	B	502	-	-	0/8/17/17	0/2/2/2
5	BTB	B	506	-	-	6/21/21/21	-
4	OS7	A	503	-	-	7/11/11/11	0/4/4/4
4	OS7	B	503	-	-	9/11/11/11	0/4/4/4
5	BTB	A	504	9	-	6/21/21/21	-
5	BTB	A	506	-	-	6/21/21/21	-
2	HEM	B	501	1	-	1/14/54/54	-
5	BTB	A	505	-	-	13/21/21/21	-
4	OS7	C	503	-	-	8/11/11/11	0/4/4/4
5	BTB	B	505	-	-	4/21/21/21	-
2	HEM	A	501	1	-	2/14/54/54	-
5	BTB	C	504	-	-	2/21/21/21	-
5	BTB	B	510	-	-	5/21/21/21	-
3	H4B	D	502	-	-	0/8/17/17	0/2/2/2
2	HEM	C	501	1	-	0/14/54/54	-
5	BTB	B	504	9	-	2/21/21/21	-
5	BTB	D	504	9	-	6/21/21/21	-
3	H4B	A	502	-	-	0/8/17/17	0/2/2/2

The worst 5 of 44 bond length outliers are listed below:

Mol	Chain	Res	Type	Atoms	Z	Observed(Å)	Ideal(Å)
2	D	501	HEM	FE-NC	6.78	2.17	1.95
2	A	501	HEM	FE-NB	5.75	2.12	1.94
2	B	501	HEM	FE-NA	5.48	2.13	1.95
2	C	501	HEM	FE-ND	5.13	2.10	1.94
2	C	501	HEM	FE-NB	5.01	2.10	1.94

The worst 5 of 85 bond angle outliers are listed below:

Mol	Chain	Res	Type	Atoms	Z	Observed(°)	Ideal(°)
4	B	503	OS7	C05-C10-N01	-5.35	117.13	122.80
4	D	503	OS7	C05-C10-N01	-4.69	117.83	122.80
4	B	503	OS7	C04-C05-C10	4.54	120.77	118.00
4	B	503	OS7	O19-C14-C15	4.47	121.66	115.89
2	B	501	HEM	C3B-C2B-C1B	4.35	109.68	106.41

There are no chirality outliers.

5 of 106 torsion outliers are listed below:

Mol	Chain	Res	Type	Atoms
5	A	504	BTB	O1-C1-C2-N
5	A	504	BTB	C1-C2-C3-O3
5	A	504	BTB	N-C2-C3-O3
5	A	505	BTB	O1-C1-C2-C4
5	A	505	BTB	C1-C2-C3-O3

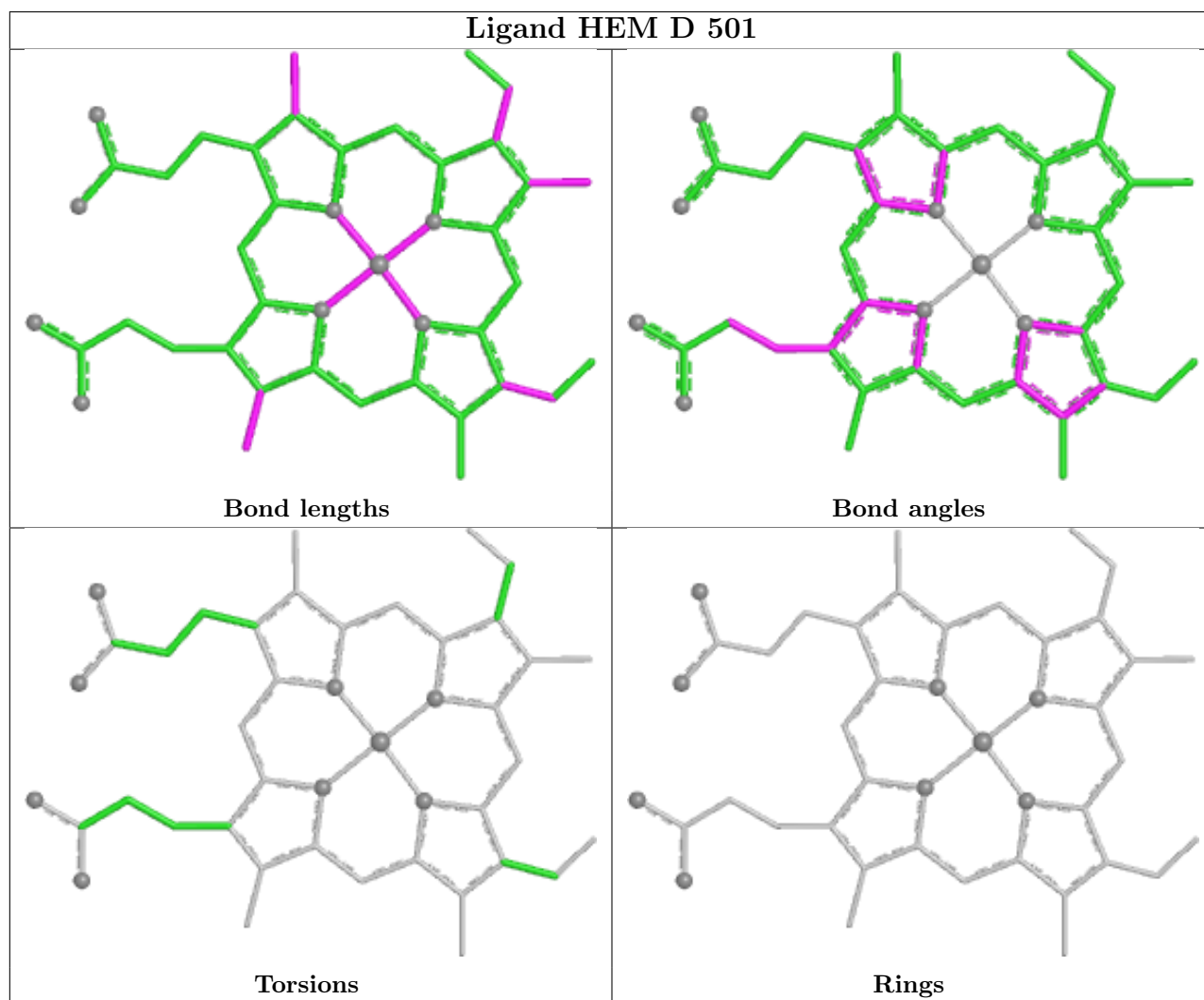
There are no ring outliers.

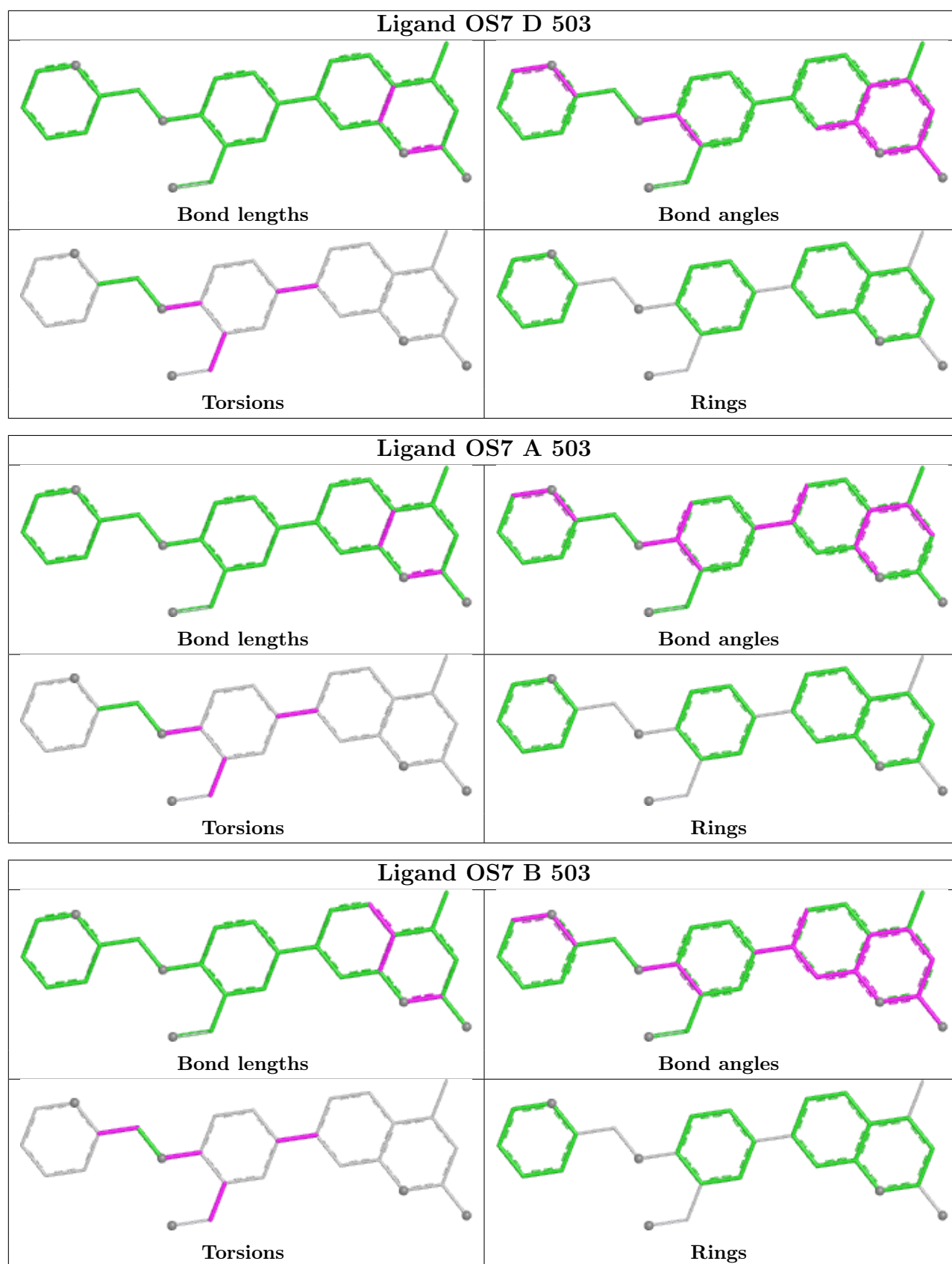
21 monomers are involved in 50 short contacts:

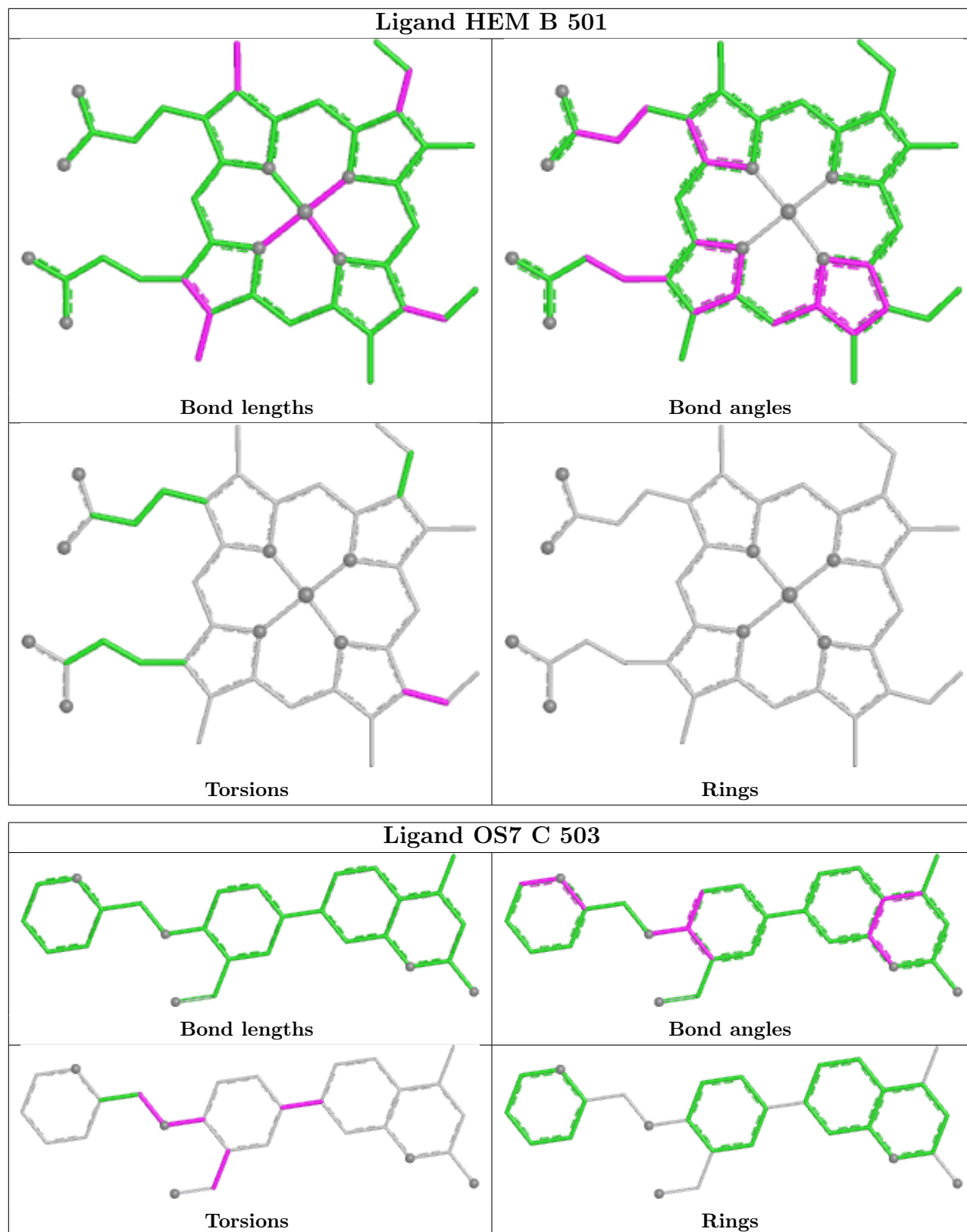
Mol	Chain	Res	Type	Clashes	Symm-Clashes
5	D	505	BTB	3	0
2	D	501	HEM	2	0
5	B	509	BTB	3	0
3	C	502	H4B	1	0
4	D	503	OS7	1	0
3	B	502	H4B	1	0
4	A	503	OS7	1	0
4	B	503	OS7	2	0
5	A	504	BTB	4	0
5	A	506	BTB	1	0
2	B	501	HEM	3	0
5	A	505	BTB	2	0
4	C	503	OS7	4	0
5	B	505	BTB	4	1
2	A	501	HEM	4	0
5	C	504	BTB	3	0
5	B	510	BTB	3	0
2	C	501	HEM	3	0
5	B	504	BTB	1	0
5	D	504	BTB	3	0
3	A	502	H4B	1	0

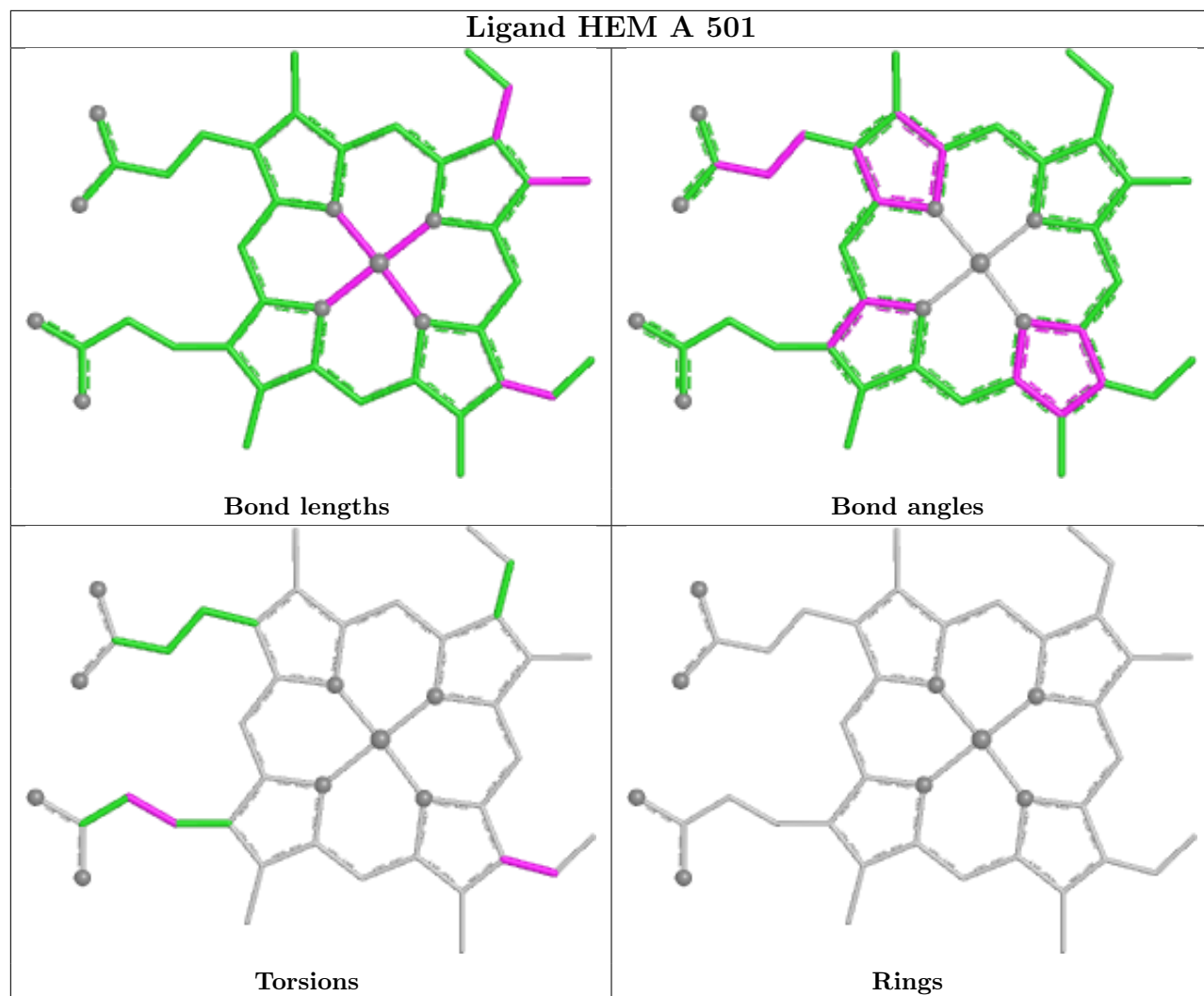
The following is a two-dimensional graphical depiction of Mogul quality analysis of bond lengths,

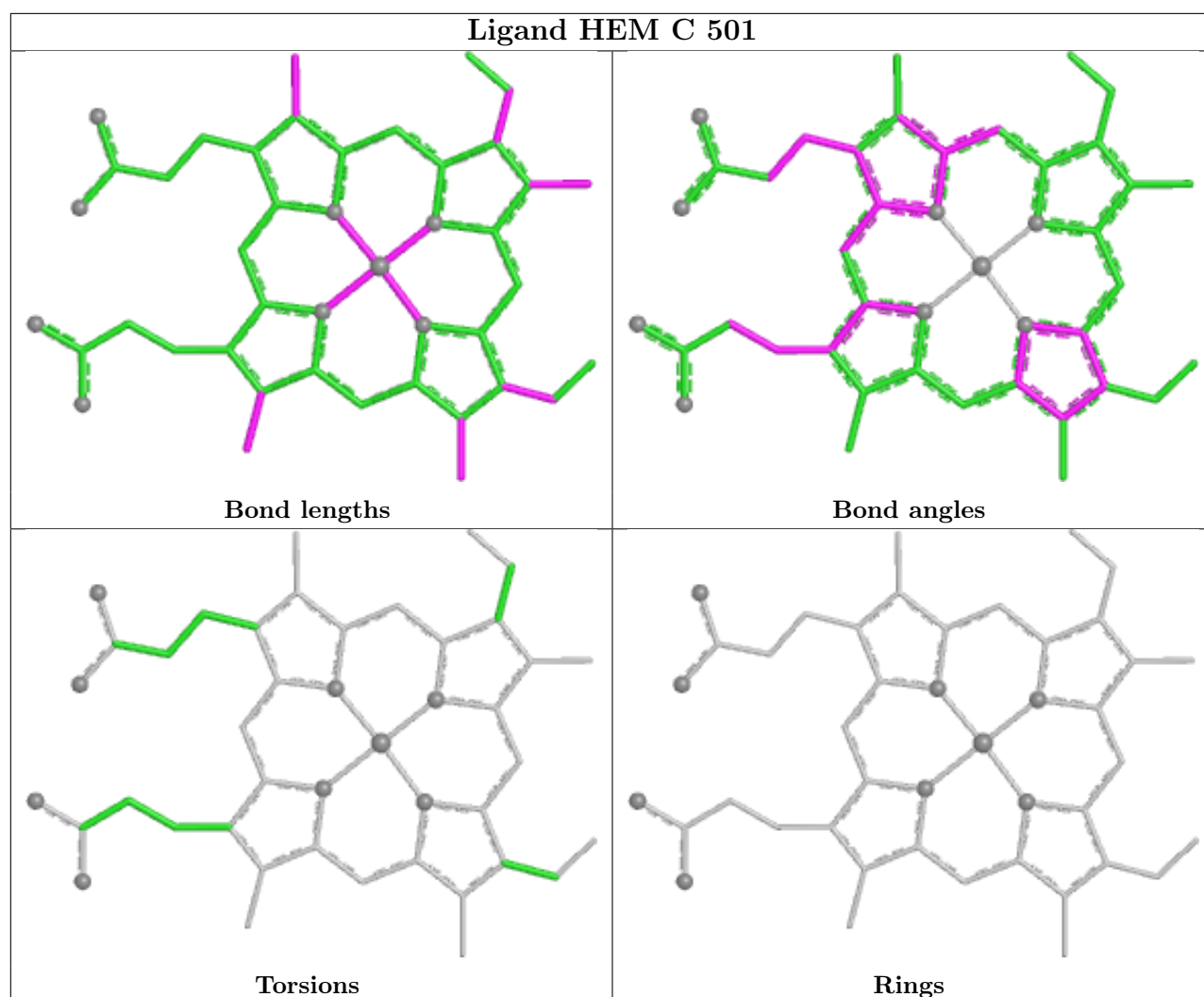
bond angles, torsion angles, and ring geometry for all instances of the Ligand of Interest. In addition, ligands with molecular weight > 250 and outliers as shown on the validation Tables will also be included. For torsion angles, if less than 5% of the Mogul distribution of torsion angles is within 10 degrees of the torsion angle in question, then that torsion angle is considered an outlier. Any bond that is central to one or more torsion angles identified as an outlier by Mogul will be highlighted in the graph. For rings, the root-mean-square deviation (RMSD) between the ring in question and similar rings identified by Mogul is calculated over all ring torsion angles. If the average RMSD is greater than 60 degrees and the minimal RMSD between the ring in question and any Mogul-identified rings is also greater than 60 degrees, then that ring is considered an outlier. The outliers are highlighted in purple. The color gray indicates Mogul did not find sufficient equivalents in the CSD to analyse the geometry.











5.7 Other polymers [i](#)

There are no such residues in this entry.

5.8 Polymer linkage issues [i](#)

There are no chain breaks in this entry.

6 Fit of model and data [i](#)

6.1 Protein, DNA and RNA chains [i](#)

In the following table, the column labelled ‘#RSRZ> 2’ contains the number (and percentage) of RSRZ outliers, followed by percent RSRZ outliers for the chain as percentile scores relative to all X-ray entries and entries of similar resolution. The OWAB column contains the minimum, median, 95th percentile and maximum values of the occupancy-weighted average B-factor per residue. The column labelled ‘Q< 0.9’ lists the number of (and percentage) of residues with an average occupancy less than 0.9.

Mol	Chain	Analysed	<RSRZ>	#RSRZ>2	OWAB(Å ²)	Q<0.9
1	A	401/440 (91%)	0.74	38 (9%) 14 15	27, 66, 122, 156	2 (0%)
1	B	402/440 (91%)	0.14	3 (0%) 84 88	22, 42, 78, 111	4 (0%)
1	C	401/440 (91%)	0.37	8 (1%) 65 72	26, 54, 98, 137	2 (0%)
1	D	401/440 (91%)	0.04	4 (0%) 79 84	27, 40, 65, 126	2 (0%)
All	All	1605/1760 (91%)	0.32	53 (3%) 49 55	22, 49, 102, 156	10 (0%)

The worst 5 of 53 RSRZ outliers are listed below:

Mol	Chain	Res	Type	RSRZ
1	A	204	ALA	4.3
1	D	119	ALA	4.3
1	D	106	PRO	4.0
1	A	120	PRO	3.8
1	A	244	TRP	3.6

6.2 Non-standard residues in protein, DNA, RNA chains [i](#)

There are no non-standard protein/DNA/RNA residues in this entry.

6.3 Carbohydrates [i](#)

There are no oligosaccharides in this entry.

6.4 Ligands [i](#)

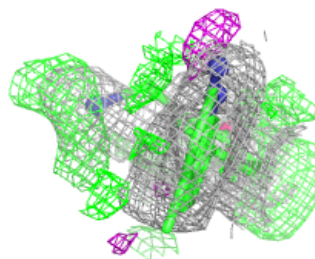
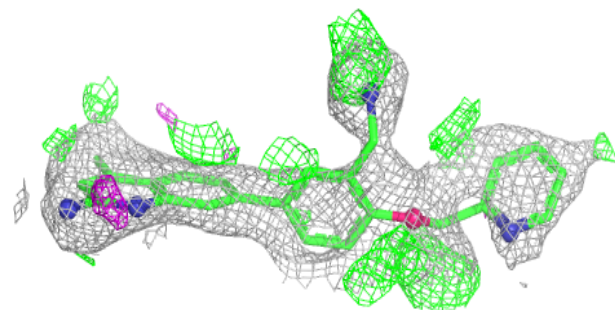
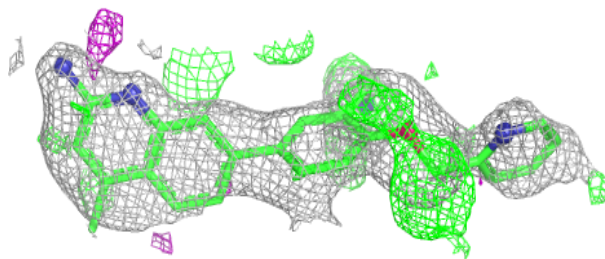
In the following table, the Atoms column lists the number of modelled atoms in the group and the number defined in the chemical component dictionary. The B-factors column lists the minimum, median, 95th percentile and maximum values of B factors of atoms in the group. The column labelled ‘Q< 0.9’ lists the number of atoms with occupancy less than 0.9.

Mol	Type	Chain	Res	Atoms	RSCC	RSR	B-factors(\AA^2)	Q<0.9
5	BTB	B	506	14/14	0.65	0.13	82,98,104,106	0
5	BTB	B	505	14/14	0.69	0.17	44,69,80,83	0
5	BTB	A	506	14/14	0.71	0.13	98,107,113,114	0
4	OS7	D	503	28/28	0.76	0.21	44,79,101,104	0
5	BTB	C	504	14/14	0.76	0.12	70,97,104,106	0
4	OS7	B	503	28/28	0.78	0.22	49,87,108,110	0
4	OS7	C	503	28/28	0.79	0.22	69,87,97,102	0
4	OS7	A	503	28/28	0.81	0.19	59,104,108,111	0
5	BTB	B	510	14/14	0.83	0.16	32,63,73,76	0
5	BTB	A	505	14/14	0.83	0.13	63,71,80,83	0
7	GOL	A	508	6/6	0.84	0.10	58,79,84,88	0
5	BTB	D	505	14/14	0.85	0.12	48,68,96,99	0
5	BTB	D	504	14/14	0.87	0.15	39,67,89,90	0
7	GOL	C	506	6/6	0.91	0.08	57,68,75,81	0
5	BTB	B	504	14/14	0.93	0.10	31,58,76,77	0
3	H4B	A	502	17/17	0.93	0.09	43,50,65,75	0
3	H4B	C	502	17/17	0.93	0.08	35,47,56,60	0
8	CL	A	509	1/1	0.93	0.10	58,58,58,58	0
8	CL	C	507	1/1	0.93	0.09	65,65,65,65	0
3	H4B	D	502	17/17	0.94	0.07	31,39,45,48	0
5	BTB	A	504	14/14	0.94	0.10	38,73,82,83	0
3	H4B	B	502	17/17	0.94	0.07	35,41,48,49	0
8	CL	B	507	1/1	0.95	0.09	54,54,54,54	0
5	BTB	B	509	14/14	0.95	0.10	25,66,74,76	0
8	CL	D	506	1/1	0.96	0.08	55,55,55,55	0
2	HEM	A	501	43/43	0.97	0.09	42,58,75,78	0
9	GD	A	510	1/1	0.97	0.06	94,94,94,94	0
2	HEM	D	501	43/43	0.98	0.07	24,34,45,51	0
2	HEM	B	501	43/43	0.98	0.07	21,33,47,67	0
2	HEM	C	501	43/43	0.98	0.07	31,43,67,79	0
9	GD	B	511	1/1	0.98	0.05	84,84,84,84	0
9	GD	D	507	1/1	0.98	0.04	48,48,48,48	0
6	ZN	A	507	1/1	0.99	0.03	46,46,46,46	0
9	GD	B	508	1/1	0.99	0.04	47,47,47,47	0
6	ZN	C	505	1/1	1.00	0.01	36,36,36,36	0

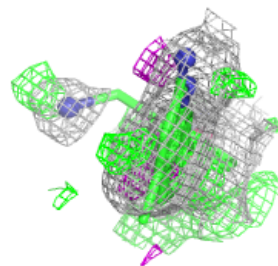
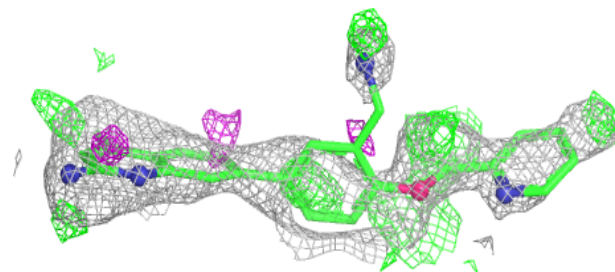
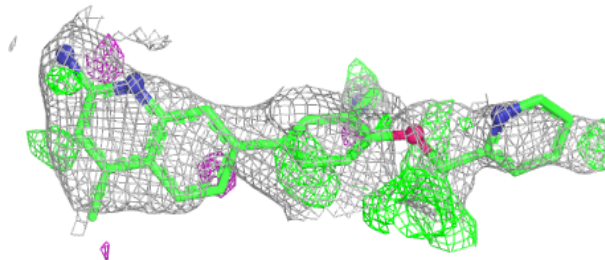
The following is a graphical depiction of the model fit to experimental electron density of all instances of the Ligand of Interest. In addition, ligands with molecular weight > 250 and outliers as shown on the geometry validation Tables will also be included. Each fit is shown from different orientation to approximate a three-dimensional view.

Electron density around OS7 D 503:

$2mF_o-DF_c$ (at 0.7 rmsd) in gray
 mF_o-DF_c (at 3 rmsd) in purple (negative)
and green (positive)

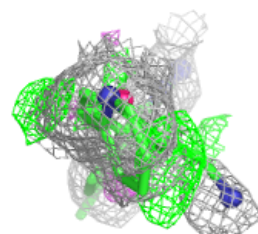
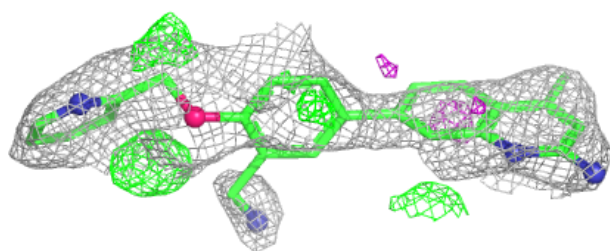
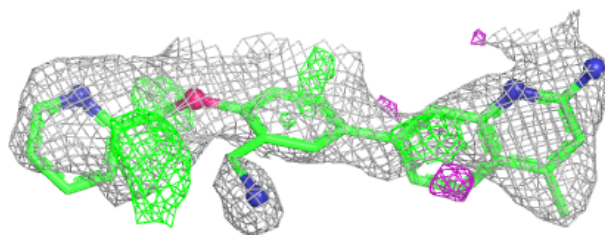
**Electron density around OS7 B 503:**

$2mF_o-DF_c$ (at 0.7 rmsd) in gray
 mF_o-DF_c (at 3 rmsd) in purple (negative)
and green (positive)

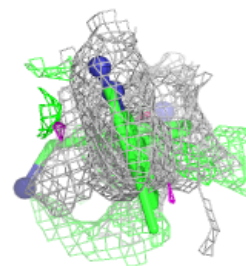
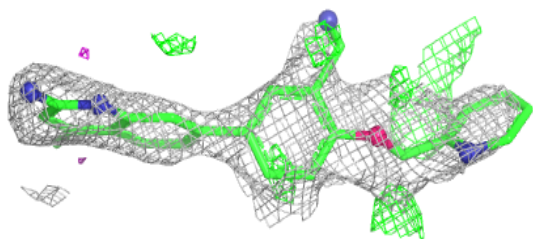
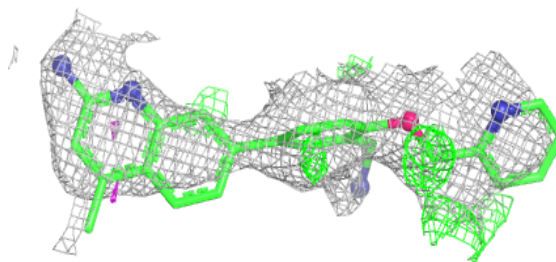


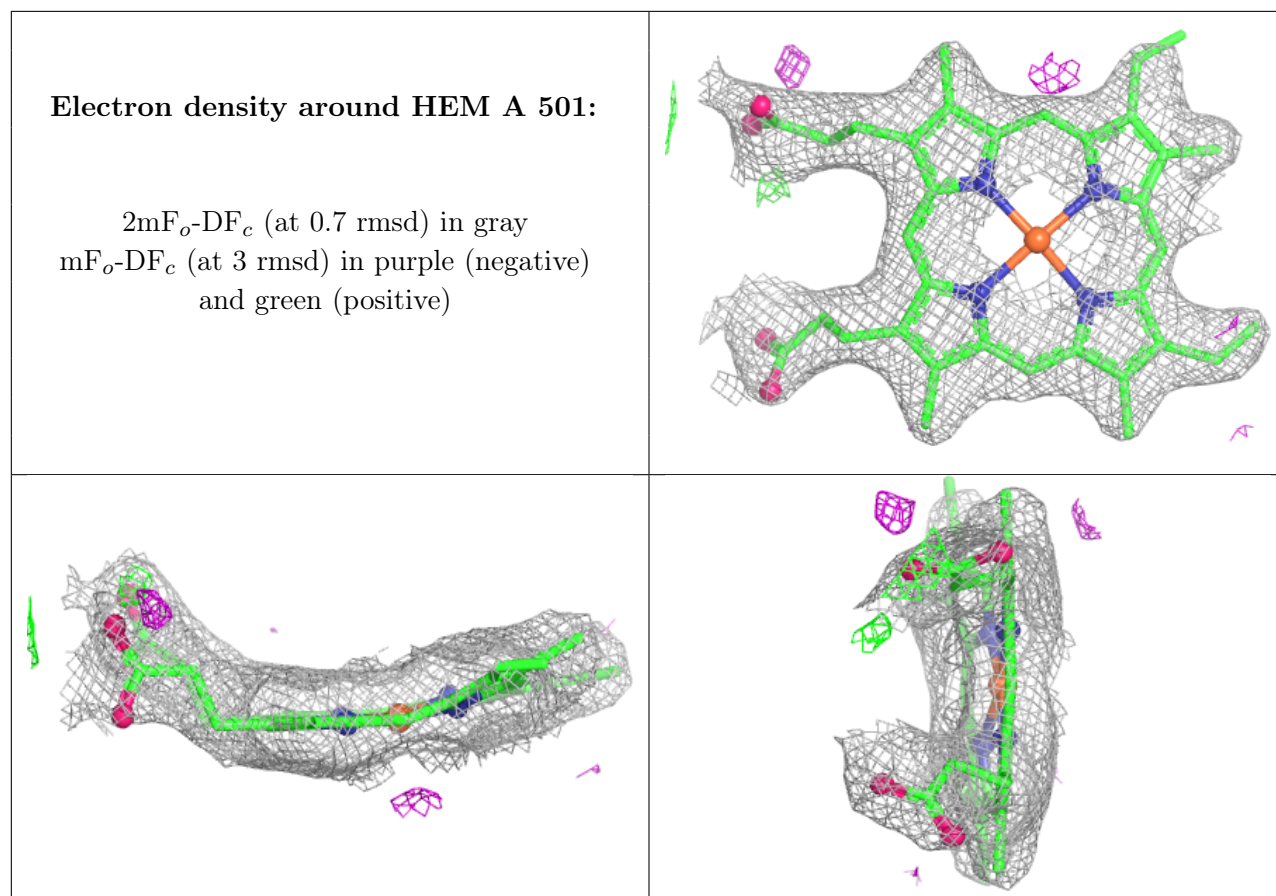
Electron density around OS7 C 503:

$2mF_o-DF_c$ (at 0.7 rmsd) in gray
 mF_o-DF_c (at 3 rmsd) in purple (negative)
and green (positive)

**Electron density around OS7 A 503:**

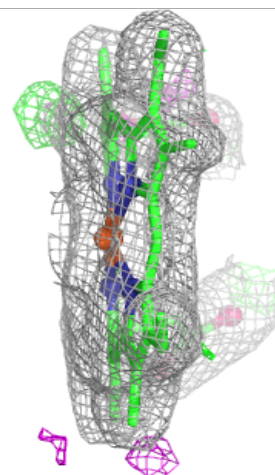
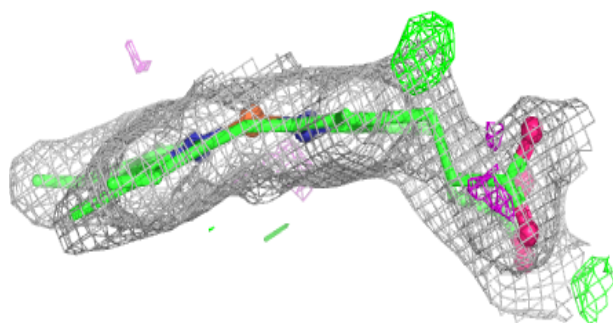
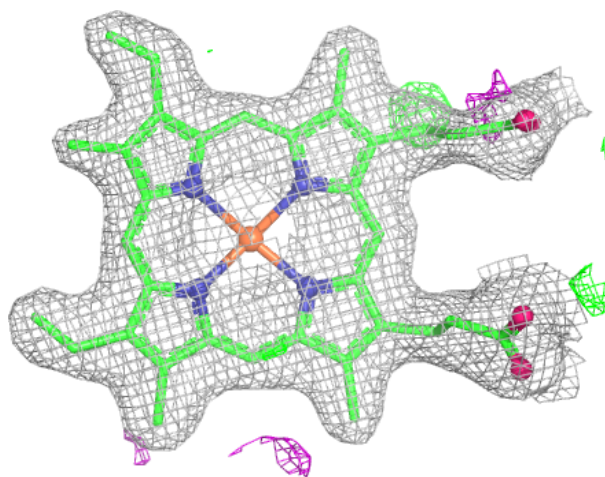
$2mF_o-DF_c$ (at 0.7 rmsd) in gray
 mF_o-DF_c (at 3 rmsd) in purple (negative)
and green (positive)





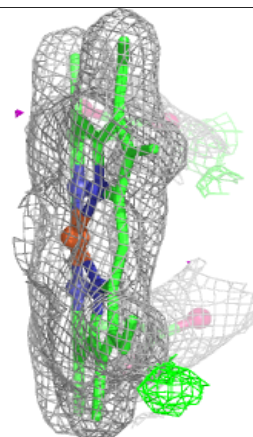
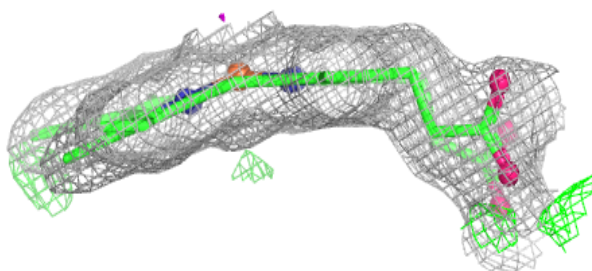
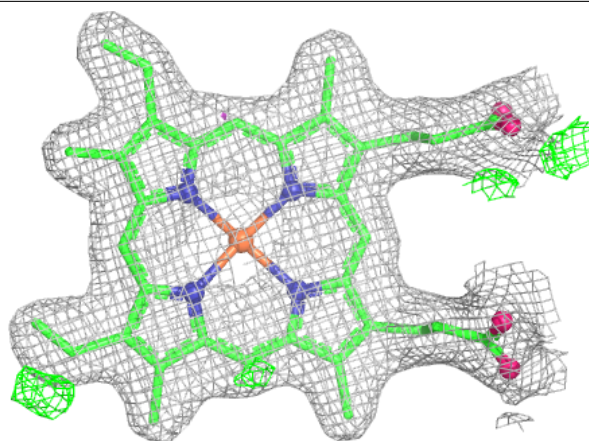
Electron density around HEM D 501:

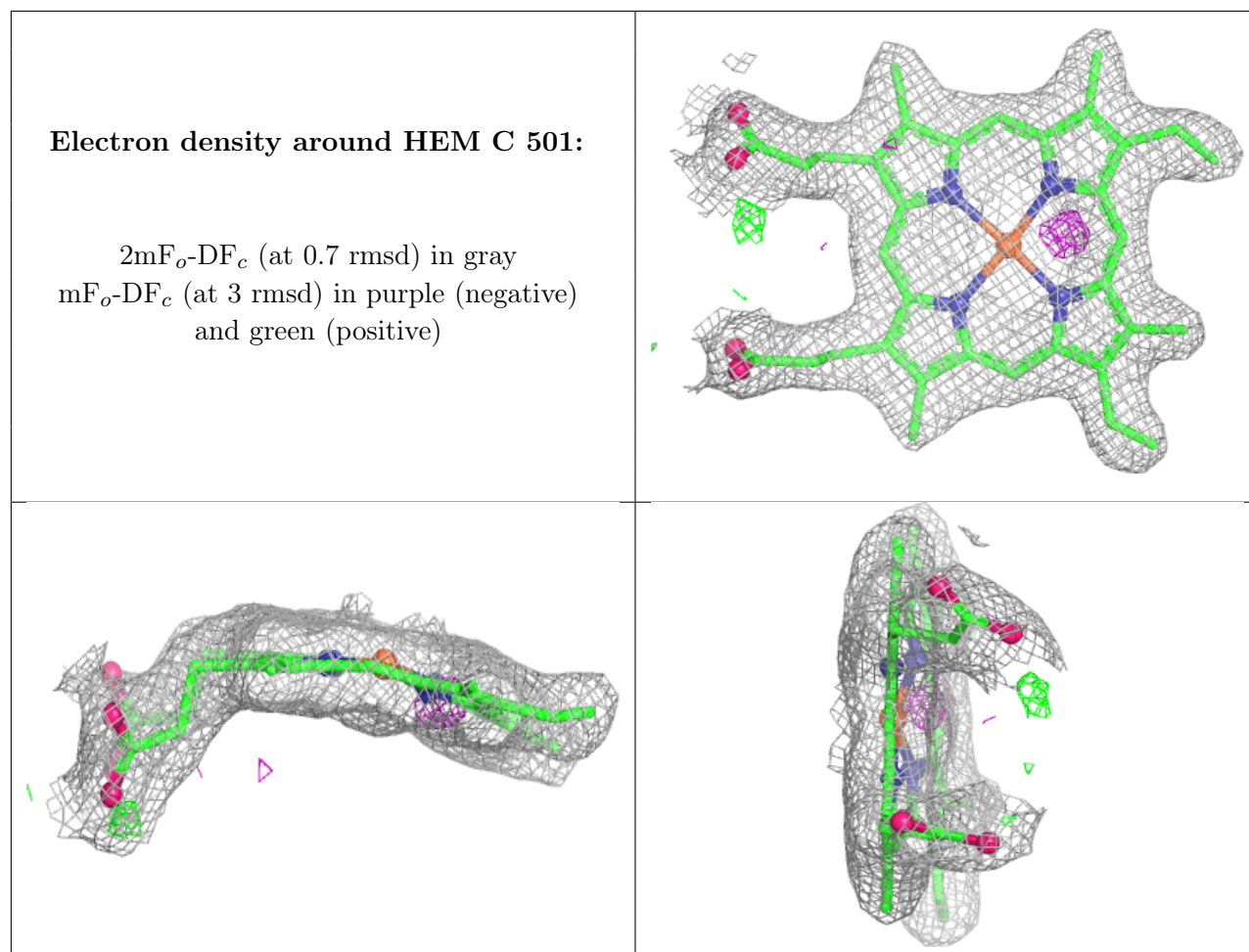
$2mF_o-DF_c$ (at 0.7 rmsd) in gray
 mF_o-DF_c (at 3 rmsd) in purple (negative)
and green (positive)



Electron density around HEM B 501:

$2mF_o-DF_c$ (at 0.7 rmsd) in gray
 mF_o-DF_c (at 3 rmsd) in purple (negative)
and green (positive)





6.5 Other polymers [i](#)

There are no such residues in this entry.