



# wwPDB X-ray Structure Validation Summary Report ⓘ

Mar 20, 2026 – 12:48 AM UTC

PDB ID : 4PH9 / pdb\_00004ph9  
Title : The structure of Ibuprofen bound to cyclooxygenase-2  
Authors : Orlando, B.J.; Lucido, M.J.; Malkowski, M.G.  
Deposited on : 2014-05-05  
Resolution : 1.81 Å(reported)

This is a wwPDB X-ray Structure Validation Summary Report for a publicly released PDB entry.

We welcome your comments at [validation@mail.wwpdb.org](mailto:validation@mail.wwpdb.org)

A user guide is available at

<https://www.wwpdb.org/validation/2017/XrayValidationReportHelp>

with specific help available everywhere you see the ⓘ symbol.

The types of validation reports are described at

<http://www.wwpdb.org/validation/2017/FAQs#types>.

---

The following versions of software and data (see [references ⓘ](#)) were used in the production of this report:

MolProbity : 4-5-2 with Phenix2.0  
Mogul : 2022.3.0, CSD as543be (2022)  
Xtrriage (Phenix) : 2.0  
EDS : 3.0  
Buster-report : wwPDB partial adaption of 1.1.7 (2018)  
Percentile statistics : 20250101.v01 (using entries in the PDB archive January 1st 2025)  
CCP4 : 9.0.010 (Gargrove)  
Density-Fitness : 1.0.12  
Ideal geometry (proteins) : Engh & Huber (2001)  
Ideal geometry (DNA, RNA) : Parkinson et al. (1996)  
Validation Pipeline (wwPDB-VP) : 2.49

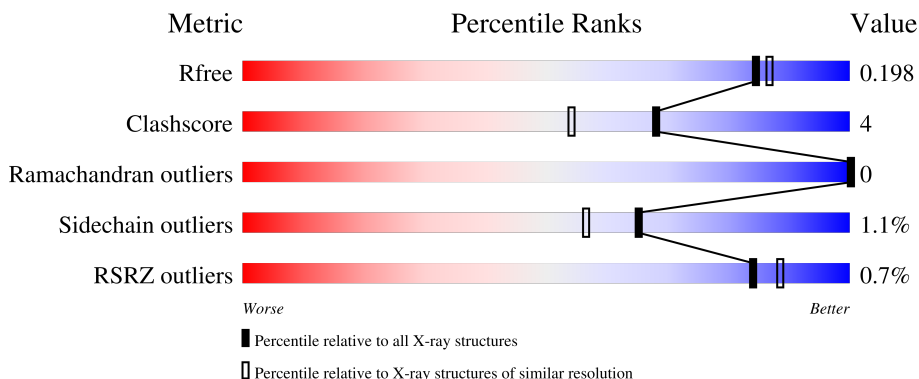
# 1 Overall quality at a glance

The following experimental techniques were used to determine the structure:

*X-RAY DIFFRACTION*

The reported resolution of this entry is 1.81 Å.

Percentile scores (ranging between 0-100) for global validation metrics of the entry are shown in the following graphic. The table shows the number of entries on which the scores are based.



Metric	Whole archive (#Entries)	Similar resolution (#Entries, resolution range(Å))
$R_{free}$	180053	1112 (1.82-1.82)
Clashscore	190562	1148 (1.82-1.82)
Ramachandran outliers	187476	1140 (1.82-1.82)
Sidechain outliers	187428	1140 (1.82-1.82)
RSRZ outliers	180081	1112 (1.82-1.82)

The table below summarises the geometric issues observed across the polymeric chains and their fit to the electron density. The red, orange, yellow and green segments of the lower bar indicate the fraction of residues that contain outliers for  $\geq 3$ , 2, 1 and 0 types of geometric quality criteria respectively. A grey segment represents the fraction of residues that are not modelled. The numeric value for each fraction is indicated below the corresponding segment, with a dot representing fractions  $\leq 5\%$ . The upper red bar (where present) indicates the fraction of residues that have poor fit to the electron density. The numeric value is given above the bar.

Mol	Chain	Length	Quality of chain
1	A	551	 92% 8%
1	B	551	 94% 6%
2	C	2	 100%
2	D	2	 50% 50%
3	E	3	 33% 67%

The following table lists non-polymeric compounds, carbohydrate monomers and non-standard residues in protein, DNA, RNA chains that are outliers for geometric or electron-density-fit criteria:

Mol	Type	Chain	Res	Chirality	Geometry	Clashes	Electron density
8	AKR	A	609	-	X	X	-
8	AKR	A	610	-	X	-	-
8	AKR	B	611	-	X	X	-

## 2 Entry composition i

There are 10 unique types of molecules in this entry. The entry contains 10527 atoms, of which 0 are hydrogens and 0 are deuteriums.

In the tables below, the ZeroOcc column contains the number of atoms modelled with zero occupancy, the AltConf column contains the number of residues with at least one atom in alternate conformation and the Trace column contains the number of residues modelled with at most 2 atoms.

- Molecule 1 is a protein called Prostaglandin G/H synthase 2.

Mol	Chain	Residues	Atoms					ZeroOcc	AltConf	Trace
			Total	C	N	O	S			
1	A	551	4515	2909	759	821	26	0	5	0
1	B	551	4500	2901	757	816	26	0	3	0

There are 4 discrepancies between the modelled and reference sequences:

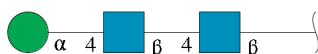
Chain	Residue	Modelled	Actual	Comment	Reference
A	33	HIS	-	expression tag	UNP Q05769
A	34	HIS	-	expression tag	UNP Q05769
B	33	HIS	-	expression tag	UNP Q05769
B	34	HIS	-	expression tag	UNP Q05769

- Molecule 2 is an oligosaccharide called 2-acetamido-2-deoxy-beta-D-glucopyranose-(1-4)-2-acetamido-2-deoxy-beta-D-glucopyranose.



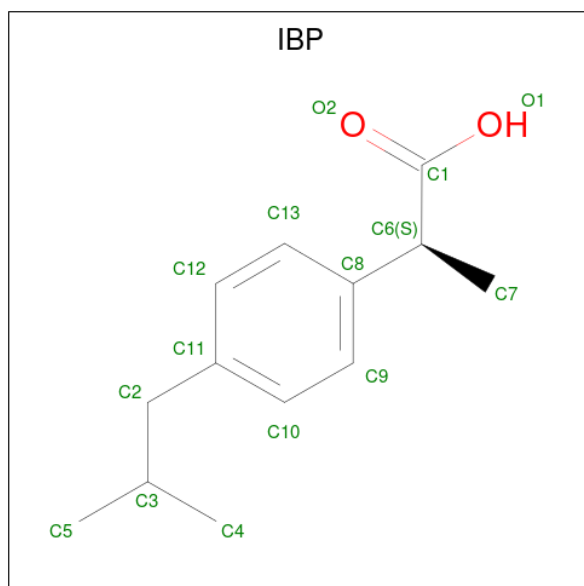
Mol	Chain	Residues	Atoms				ZeroOcc	AltConf	Trace
			Total	C	N	O			
2	C	2	28	16	2	10	0	0	0
2	D	2	28	16	2	10	0	0	0

- Molecule 3 is an oligosaccharide called alpha-D-mannopyranose-(1-4)-2-acetamido-2-deoxy-beta-D-glucopyranose-(1-4)-2-acetamido-2-deoxy-beta-D-glucopyranose.



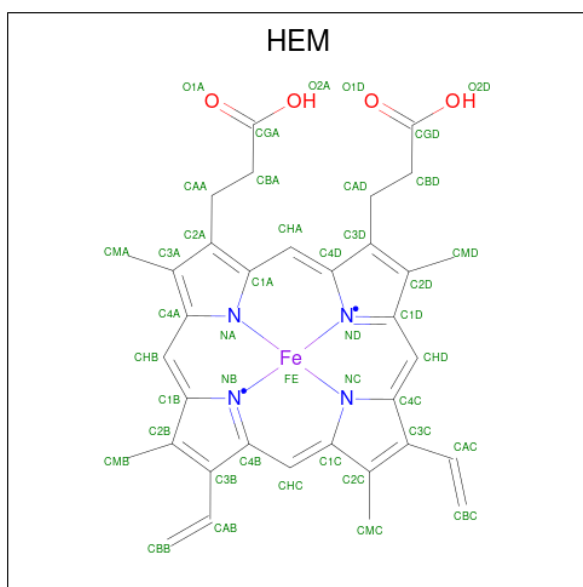
Mol	Chain	Residues	Atoms				ZeroOcc	AltConf	Trace
			Total	C	N	O			
3	E	3	39	22	2	15	0	0	0

- Molecule 4 is IBUPROFEN (CCD ID: IBP) (formula:  $C_{13}H_{18}O_2$ ).



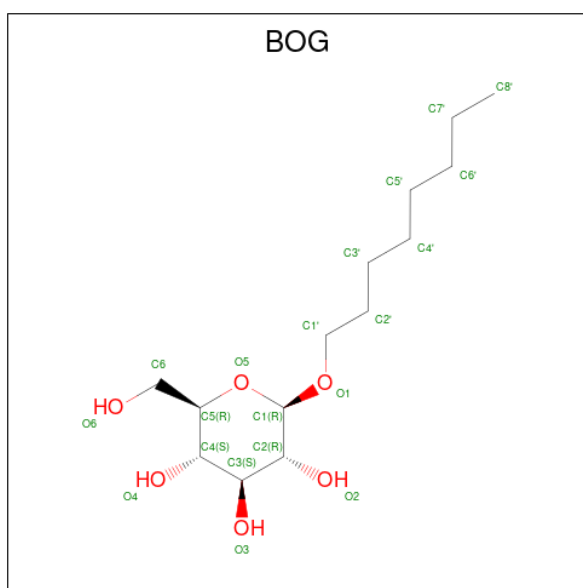
Mol	Chain	Residues	Atoms			ZeroOcc	AltConf
			Total	C	O		
4	A	1	15	13	2	0	0
4	B	1	15	13	2	0	0

- Molecule 5 is PROTOPORPHYRIN IX CONTAINING FE (CCD ID: HEM) (formula:  $C_{34}H_{32}FeN_4O_4$ ).



Mol	Chain	Residues	Atoms				ZeroOcc	AltConf	
5	A	1	Total	C	Fe	N	O	0	0
			43	34	1	4	4		
5	B	1	Total	C	Fe	N	O	0	0
			43	34	1	4	4		

- Molecule 6 is octyl beta-D-glucopyranoside (CCD ID: BOG) (formula:  $C_{14}H_{28}O_6$ ).



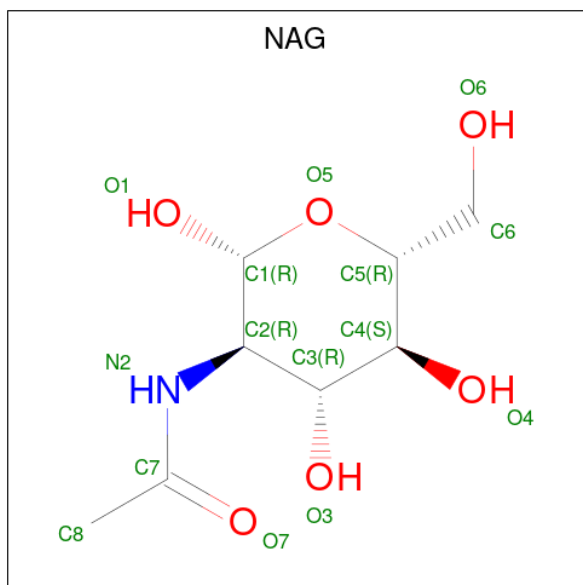
Mol	Chain	Residues	Atoms			ZeroOcc	AltConf
6	A	1	Total	C	O	0	0
			20	14	6		
6	A	1	Total	C	O	0	0
			20	14	6		

*Continued on next page...*

Continued from previous page...

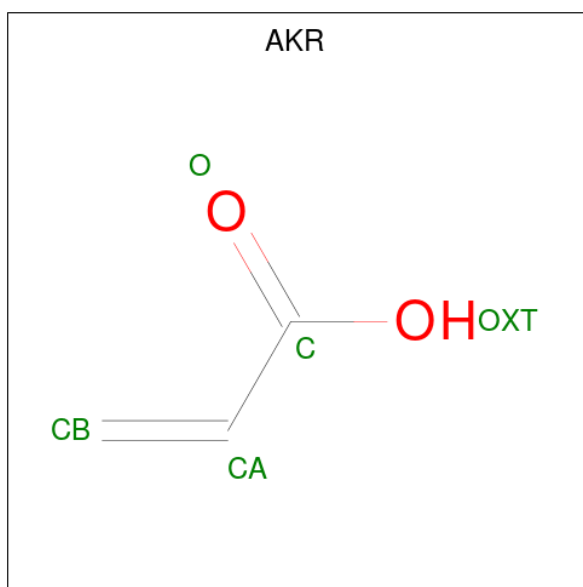
Mol	Chain	Residues	Atoms			ZeroOcc	AltConf
			Total	C	O		
6	B	1	20	14	6	0	0

- Molecule 7 is 2-acetamido-2-deoxy-beta-D-glucopyranose (CCD ID: NAG) (formula:  $C_8H_{15}NO_6$ ).



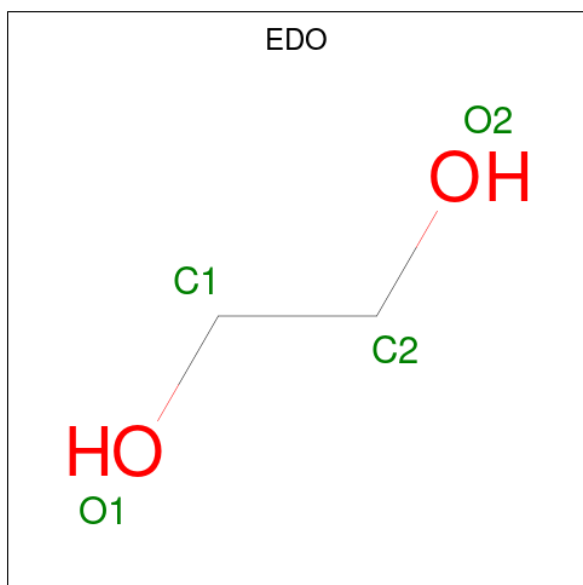
Mol	Chain	Residues	Atoms				ZeroOcc	AltConf
			Total	C	N	O		
7	A	1	14	8	1	5	0	0
7	A	1	14	8	1	5	0	0
7	B	1	14	8	1	5	0	0

- Molecule 8 is ACRYLIC ACID (CCD ID: AKR) (formula:  $C_3H_4O_2$ ).



Mol	Chain	Residues	Atoms			ZeroOcc	AltConf
8	A	1	Total	C	O	0	0
			5	3	2		
8	A	1	Total	C	O	0	0
			5	3	2		
8	B	1	Total	C	O	0	0
			5	3	2		
8	B	1	Total	C	O	0	0
			5	3	2		

- Molecule 9 is 1,2-ETHANEDIOL (CCD ID: EDO) (formula: C<sub>2</sub>H<sub>6</sub>O<sub>2</sub>).



Mol	Chain	Residues	Atoms	ZeroOcc	AltConf
9	A	1	Total C O 4 2 2	0	0
9	A	1	Total C O 4 2 2	0	0
9	A	1	Total C O 4 2 2	0	0
9	A	1	Total C O 4 2 2	0	0
9	A	1	Total C O 4 2 2	0	0
9	A	1	Total C O 4 2 2	0	0
9	B	1	Total C O 4 2 2	0	0
9	B	1	Total C O 4 2 2	0	0
9	B	1	Total C O 4 2 2	0	0
9	B	1	Total C O 4 2 2	0	0
9	B	1	Total C O 4 2 2	0	0
9	B	1	Total C O 4 2 2	0	0
9	B	1	Total C O 4 2 2	0	0

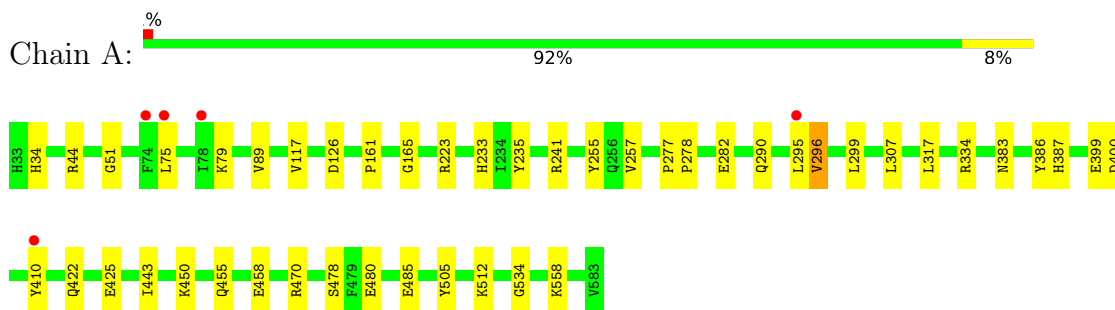
- Molecule 10 is water.

Mol	Chain	Residues	Atoms	ZeroOcc	AltConf
10	A	545	Total O 545 545	0	0
10	B	582	Total O 582 582	0	0

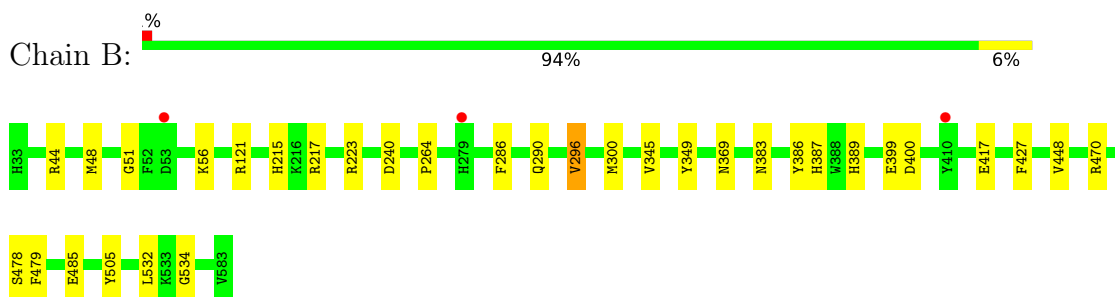
### 3 Residue-property plots [i](#)

These plots are drawn for all protein, RNA, DNA and oligosaccharide chains in the entry. The first graphic for a chain summarises the proportions of the various outlier classes displayed in the second graphic. The second graphic shows the sequence view annotated by issues in geometry and electron density. Residues are color-coded according to the number of geometric quality criteria for which they contain at least one outlier: green = 0, yellow = 1, orange = 2 and red = 3 or more. A red dot above a residue indicates a poor fit to the electron density ( $RSRZ > 2$ ). Stretches of 2 or more consecutive residues without any outlier are shown as a green connector. Residues present in the sample, but not in the model, are shown in grey.

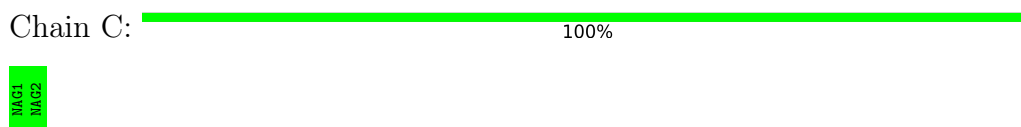
- Molecule 1: Prostaglandin G/H synthase 2



- Molecule 1: Prostaglandin G/H synthase 2




- Molecule 2: 2-acetamido-2-deoxy-beta-D-glucopyranose-(1-4)-2-acetamido-2-deoxy-beta-D-glucopyranose



- Molecule 2: 2-acetamido-2-deoxy-beta-D-glucopyranose-(1-4)-2-acetamido-2-deoxy-beta-D-glucopyranose



- Molecule 3: alpha-D-mannopyranose-(1-4)-2-acetamido-2-deoxy-beta-D-glucopyranose-(1-4)-2-acetamido-2-deoxy-beta-D-glucopyranose

Chain E:  33% 67%

MAG1  
MAG2  
MAG3

## 4 Data and refinement statistics

Property	Value	Source
Space group	I 2 2 2	Depositor
Cell constants a, b, c, $\alpha$ , $\beta$ , $\gamma$	120.94Å 132.23Å 180.46Å 90.00° 90.00° 90.00°	Depositor
Resolution (Å)	35.55 – 1.81 35.55 – 1.81	Depositor EDS
% Data completeness (in resolution range)	98.0 (35.55-1.81) 88.2 (35.55-1.81)	Depositor EDS
$R_{merge}$	0.06	Depositor
$R_{sym}$	(Not available)	Depositor
$\langle I/\sigma(I) \rangle$ <sup>1</sup>	1.42 (at 1.81Å)	Xtrriage
Refinement program	PHENIX (PHENIX.REFINE: 1.8.4_1496)	Depositor
R, $R_{free}$	0.160 , 0.197 0.161 , 0.198	Depositor DCC
$R_{free}$ test set	6431 reflections (4.91%)	wwPDB-VP
Wilson B-factor (Å <sup>2</sup> )	22.4	Xtrriage
Anisotropy	0.653	Xtrriage
Bulk solvent $k_{sol}$ (e/Å <sup>3</sup> ), $B_{sol}$ (Å <sup>2</sup> )	0.37 , 50.1	EDS
L-test for twinning <sup>2</sup>	$\langle  L  \rangle = 0.50$ , $\langle L^2 \rangle = 0.34$	Xtrriage
Estimated twinning fraction	No twinning to report.	Xtrriage
$F_o, F_c$ correlation	0.97	EDS
Total number of atoms	10527	wwPDB-VP
Average B, all atoms (Å <sup>2</sup> )	29.0	wwPDB-VP

Xtrriage's analysis on translational NCS is as follows: *The largest off-origin peak in the Patterson function is 3.17% of the height of the origin peak. No significant pseudotranslation is detected.*

<sup>1</sup>Intensities estimated from amplitudes.

<sup>2</sup>Theoretical values of  $\langle |L| \rangle$ ,  $\langle L^2 \rangle$  for acentric reflections are 0.5, 0.333 respectively for untwinned datasets, and 0.375, 0.2 for perfectly twinned datasets.

## 5 Model quality [i](#)

### 5.1 Standard geometry [i](#)

Bond lengths and bond angles in the following residue types are not validated in this section: HEM, BOG, EDO, NAG, IBP, AKR, MAN

The Z score for a bond length (or angle) is the number of standard deviations the observed value is removed from the expected value. A bond length (or angle) with  $|Z| > 5$  is considered an outlier worth inspection. RMSZ is the root-mean-square of all Z scores of the bond lengths (or angles).

Mol	Chain	Bond lengths		Bond angles	
		RMSZ	# Z  >5	RMSZ	# Z  >5
1	A	0.68	0/4644	0.85	5/6295 (0.1%)
1	B	0.67	0/4629	0.84	5/6275 (0.1%)
All	All	0.68	0/9273	0.85	10/12570 (0.1%)

There are no bond length outliers.

The worst 5 of 10 bond angle outliers are listed below:

Mol	Chain	Res	Type	Atoms	Z	Observed(°)	Ideal(°)
1	A	34	HIS	CA-C-N	6.80	126.50	119.56
1	A	34	HIS	C-N-CA	6.80	126.50	119.56
1	B	51	GLY	N-CA-C	-6.51	102.04	110.69
1	A	51	GLY	N-CA-C	-6.22	102.04	110.80
1	A	505	TYR	CA-C-N	-5.13	113.75	119.19

There are no chirality outliers.

There are no planarity outliers.

### 5.2 Too-close contacts [i](#)

In the following table, the Non-H and H(model) columns list the number of non-hydrogen atoms and hydrogen atoms in the chain respectively. The H(added) column lists the number of hydrogen atoms added and optimized by MolProbity. The Clashes column lists the number of clashes within the asymmetric unit, whereas Symm-Clashes lists symmetry-related clashes.

Mol	Chain	Non-H	H(model)	H(added)	Clashes	Symm-Clashes
1	A	4515	0	4402	35	0
1	B	4500	0	4393	27	0
2	C	28	0	25	0	0
2	D	28	0	25	0	0

*Continued on next page...*

*Continued from previous page...*

Mol	Chain	Non-H	H(model)	H(added)	Clashes	Symm-Clashes
3	E	39	0	34	1	0
4	A	15	0	17	0	0
4	B	15	0	17	0	0
5	A	43	0	30	2	0
5	B	43	0	30	3	0
6	A	40	0	56	3	0
6	B	20	0	28	0	0
7	A	28	0	26	0	0
7	B	14	0	13	0	0
8	A	10	0	6	6	0
8	B	10	0	6	7	0
9	A	24	0	36	4	0
9	B	28	0	42	2	0
10	A	545	0	0	10	1
10	B	582	0	0	4	1
All	All	10527	0	9186	66	1

The all-atom clashscore is defined as the number of clashes found per 1000 atoms (including hydrogen atoms). The all-atom clashscore for this structure is 4.

The worst 5 of 66 close contacts within the same asymmetric unit are listed below, sorted by their clash magnitude.

Atom-1	Atom-2	Interatomic distance (Å)	Clash overlap (Å)
1:B:215:HIS:ND1	10:B:1238:HOH:O	2.11	0.84
1:A:126:ASP:OD2	10:A:1087:HOH:O	2.00	0.79
1:B:479:PHE:H	8:B:611:AKR:HA1	1.49	0.78
1:A:295:LEU:HG	1:A:296:VAL:HG12	1.69	0.75
1:A:241:ARG:HH11	8:A:610:AKR:HA1	1.56	0.70

All (1) symmetry-related close contacts are listed below. The label for Atom-2 includes the symmetry operator and encoded unit-cell translations to be applied.

Atom-1	Atom-2	Interatomic distance (Å)	Clash overlap (Å)
10:A:749:HOH:O	10:B:737:HOH:O[7_555]	2.16	0.04

## 5.3 Torsion angles [i](#)

### 5.3.1 Protein backbone [i](#)

In the following table, the Percentiles column shows the percent Ramachandran outliers of the chain as a percentile score with respect to all X-ray entries followed by that with respect to entries of similar resolution.

The Analysed column shows the number of residues for which the backbone conformation was analysed, and the total number of residues.

Mol	Chain	Analysed	Favoured	Allowed	Outliers	Percentiles	
1	A	554/551 (100%)	541 (98%)	13 (2%)	0	100	100
1	B	552/551 (100%)	539 (98%)	13 (2%)	0	100	100
All	All	1106/1102 (100%)	1080 (98%)	26 (2%)	0	100	100

There are no Ramachandran outliers to report.

### 5.3.2 Protein sidechains [i](#)

In the following table, the Percentiles column shows the percent sidechain outliers of the chain as a percentile score with respect to all X-ray entries followed by that with respect to entries of similar resolution.

The Analysed column shows the number of residues for which the sidechain conformation was analysed, and the total number of residues.

Mol	Chain	Analysed	Rotameric	Outliers	Percentiles	
1	A	498/493 (101%)	492 (99%)	6 (1%)	63	54
1	B	496/493 (101%)	491 (99%)	5 (1%)	68	60
All	All	994/986 (101%)	983 (99%)	11 (1%)	65	56

5 of 11 residues with a non-rotameric sidechain are listed below:

Mol	Chain	Res	Type
1	B	296	VAL
1	B	386	TYR
1	B	485	GLU
1	B	417	GLU
1	A	386	TYR

Sometimes sidechains can be flipped to improve hydrogen bonding and reduce clashes. 5 of 7 such sidechains are listed below:

Mol	Chain	Res	Type
1	A	572	ASN
1	B	319	GLN
1	B	572	ASN
1	B	561	ASN
1	A	319	GLN

### 5.3.3 RNA [i](#)

There are no RNA molecules in this entry.

### 5.4 Non-standard residues in protein, DNA, RNA chains [i](#)

There are no non-standard protein/DNA/RNA residues in this entry.

### 5.5 Carbohydrates [i](#)

7 monosaccharides are modelled in this entry.

In the following table, the Counts columns list the number of bonds (or angles) for which Mogul statistics could be retrieved, the number of bonds (or angles) that are observed in the model and the number of bonds (or angles) that are defined in the Chemical Component Dictionary. The Link column lists molecule types, if any, to which the group is linked. The Z score for a bond length (or angle) is the number of standard deviations the observed value is removed from the expected value. A bond length (or angle) with  $|Z| > 2$  is considered an outlier worth inspection. RMSZ is the root-mean-square of all Z scores of the bond lengths (or angles).

Mol	Type	Chain	Res	Link	Bond lengths			Bond angles		
					Counts	RMSZ	$\# Z  > 2$	Counts	RMSZ	$\# Z  > 2$
2	NAG	C	1	1,2	14,14,15	0.26	0	17,19,21	0.67	0
2	NAG	C	2	2	14,14,15	0.54	0	17,19,21	0.43	0
2	NAG	D	1	1,2	14,14,15	0.56	0	17,19,21	0.72	1 (5%)
2	NAG	D	2	2	14,14,15	0.25	0	17,19,21	0.39	0
3	NAG	E	1	1,3	14,14,15	0.22	0	17,19,21	0.64	0
3	NAG	E	2	3	14,14,15	0.66	0	17,19,21	0.73	0
3	MAN	E	3	3	11,11,12	1.18	1 (9%)	15,15,17	1.80	2 (13%)

In the following table, the Chirals column lists the number of chiral outliers, the number of chiral centers analysed, the number of these observed in the model and the number defined in the Chemical Component Dictionary. Similar counts are reported in the Torsion and Rings columns. '-' means no outliers of that kind were identified.

Mol	Type	Chain	Res	Link	Chirals	Torsions	Rings
2	NAG	C	1	1,2	-	0/6/23/26	0/1/1/1
2	NAG	C	2	2	-	2/6/23/26	0/1/1/1
2	NAG	D	1	1,2	-	1/6/23/26	0/1/1/1
2	NAG	D	2	2	-	2/6/23/26	0/1/1/1
3	NAG	E	1	1,3	-	0/6/23/26	0/1/1/1
3	NAG	E	2	3	-	2/6/23/26	0/1/1/1
3	MAN	E	3	3	-	2/2/19/22	0/1/1/1

All (1) bond length outliers are listed below:

Mol	Chain	Res	Type	Atoms	Z	Observed(Å)	Ideal(Å)
3	E	3	MAN	O5-C5	2.07	1.47	1.43

All (3) bond angle outliers are listed below:

Mol	Chain	Res	Type	Atoms	Z	Observed(°)	Ideal(°)
3	E	3	MAN	C1-O5-C5	5.80	119.96	112.19
3	E	3	MAN	O2-C2-C3	-2.64	104.68	110.15
2	D	1	NAG	C1-O5-C5	2.27	115.23	112.19

There are no chirality outliers.

5 of 9 torsion outliers are listed below:

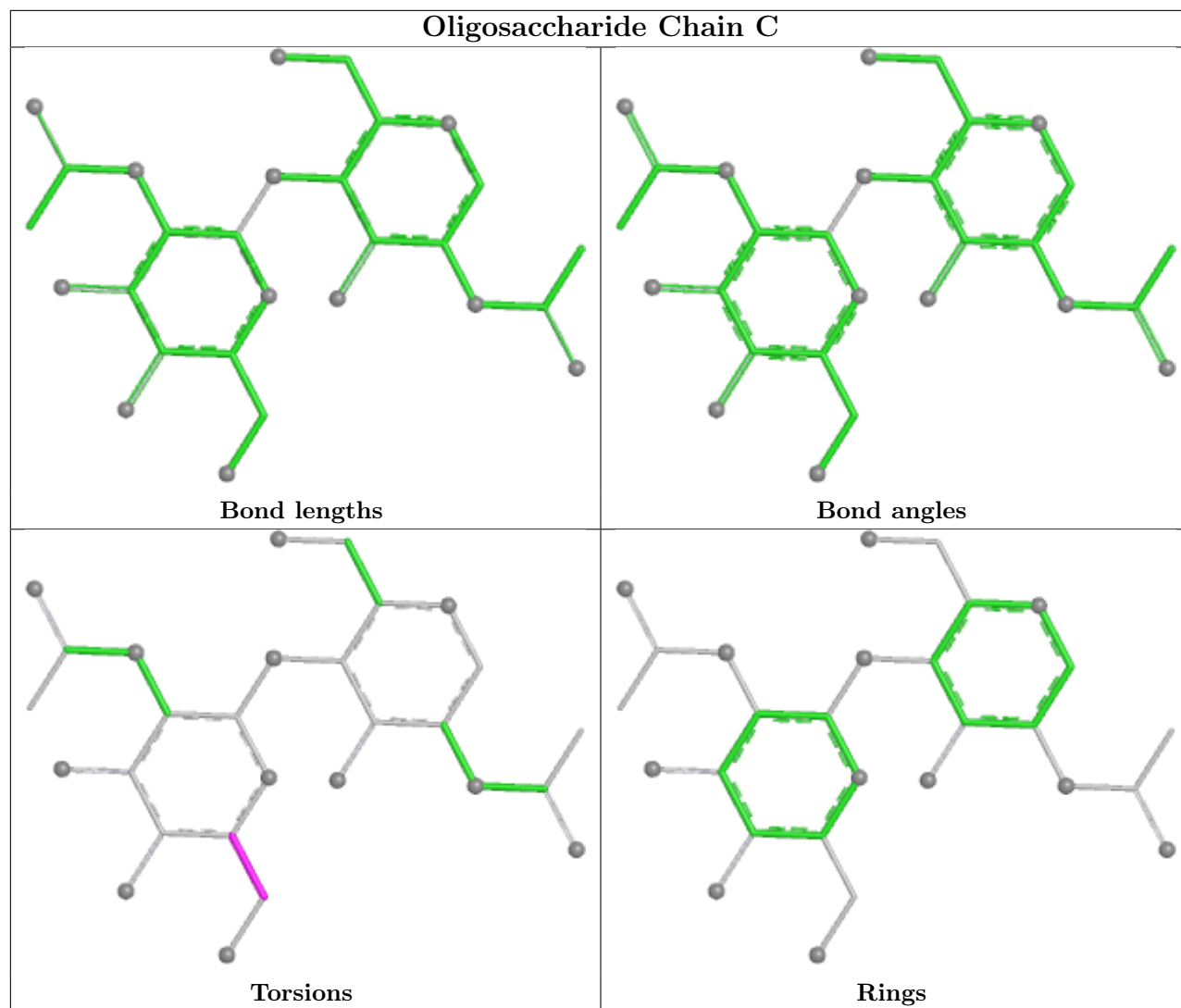
Mol	Chain	Res	Type	Atoms
3	E	3	MAN	O5-C5-C6-O6
3	E	3	MAN	C4-C5-C6-O6
2	D	2	NAG	O5-C5-C6-O6
2	D	2	NAG	C4-C5-C6-O6
2	C	2	NAG	O5-C5-C6-O6

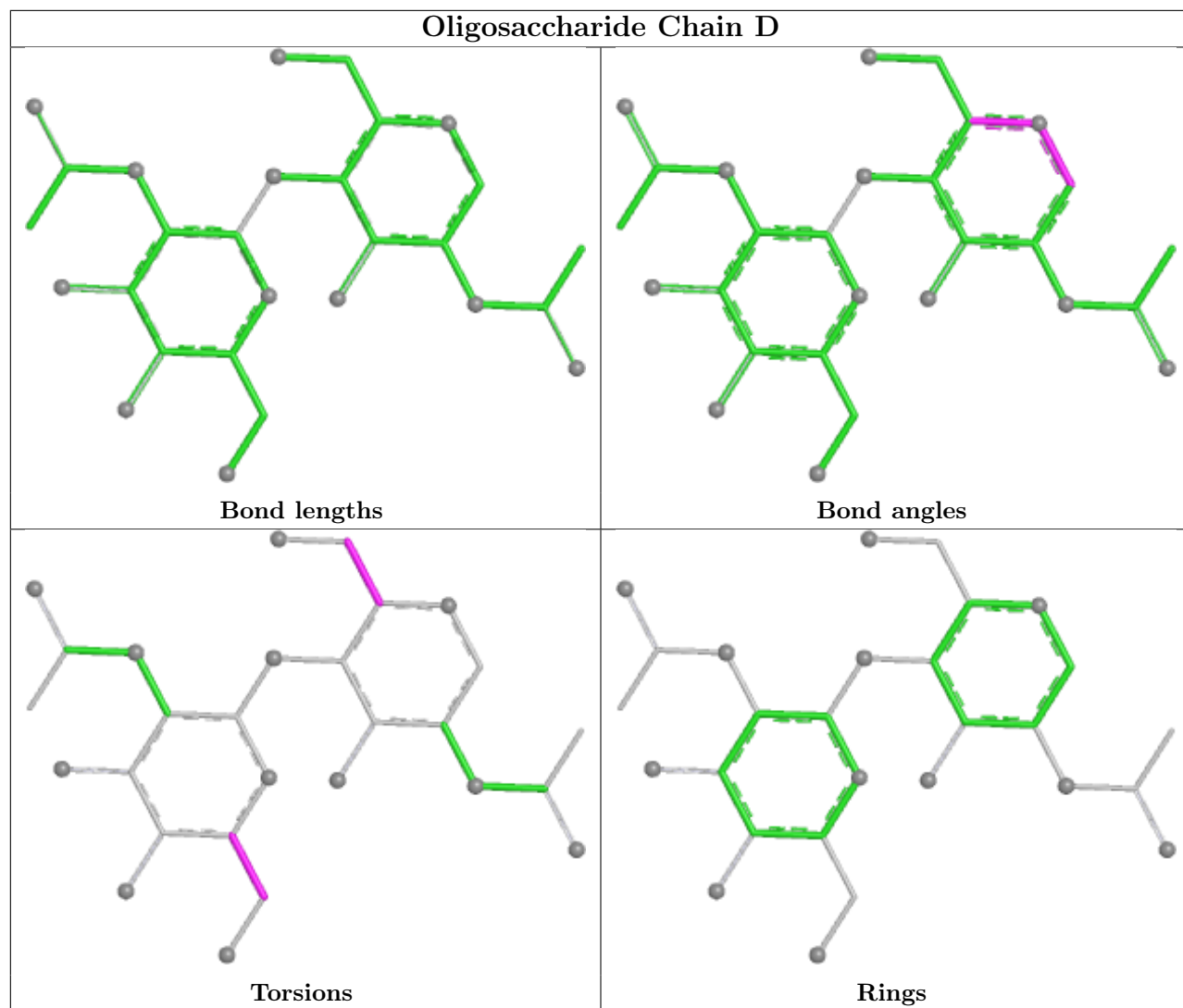
There are no ring outliers.

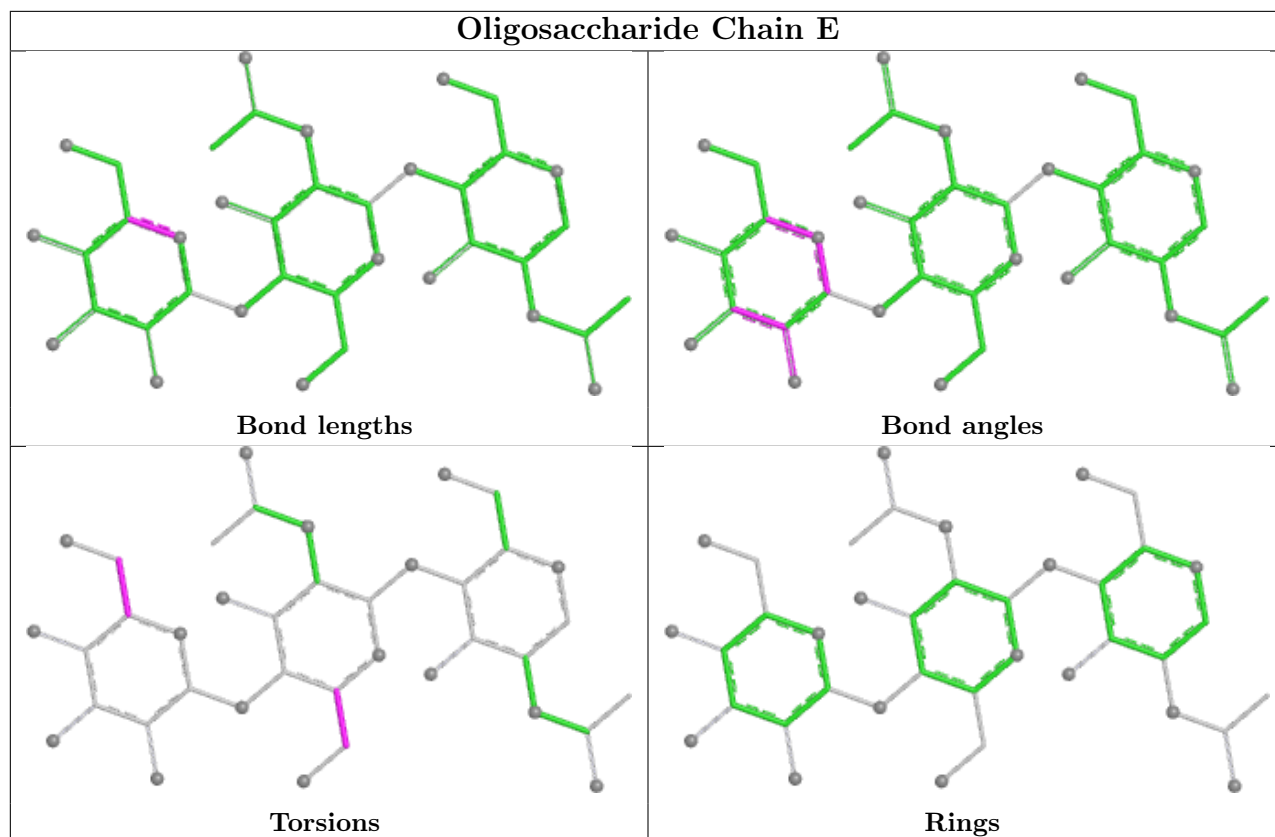
1 monomer is involved in 1 short contact:

Mol	Chain	Res	Type	Clashes	Symm-Clashes
3	E	2	NAG	1	0

The following is a two-dimensional graphical depiction of Mogul quality analysis of bond lengths, bond angles, torsion angles, and ring geometry for oligosaccharide.







## 5.6 Ligand geometry [i](#)

27 ligands are modelled in this entry.

In the following table, the Counts columns list the number of bonds (or angles) for which Mogul statistics could be retrieved, the number of bonds (or angles) that are observed in the model and the number of bonds (or angles) that are defined in the Chemical Component Dictionary. The Link column lists molecule types, if any, to which the group is linked. The Z score for a bond length (or angle) is the number of standard deviations the observed value is removed from the expected value. A bond length (or angle) with  $|Z| > 2$  is considered an outlier worth inspection. RMSZ is the root-mean-square of all Z scores of the bond lengths (or angles).

Mol	Type	Chain	Res	Link	Bond lengths			Bond angles		
					Counts	RMSZ	# Z  > 2	Counts	RMSZ	# Z  > 2
5	HEM	A	602	1,10	50,50,50	1.84	9 (18%)	67,82,82	1.50	10 (14%)
9	EDO	B	618	-	3,3,3	0.36	0	2,2,2	0.90	0
7	NAG	A	605	1	14,14,15	0.26	0	17,19,21	1.17	3 (17%)
7	NAG	A	608	1	14,14,15	0.57	0	17,19,21	0.45	0
8	AKR	A	609	-	4,4,4	1.17	0	4,4,4	1.91	2 (50%)
4	IBP	A	601	-	15,15,15	0.76	1 (6%)	20,20,20	1.08	2 (10%)
5	HEM	B	602	1,10	50,50,50	1.93	9 (18%)	67,82,82	1.54	8 (11%)
9	EDO	A	614	-	3,3,3	0.50	0	2,2,2	0.41	0

Mol	Type	Chain	Res	Link	Bond lengths			Bond angles		
					Counts	RMSZ	# Z  > 2	Counts	RMSZ	# Z  > 2
4	IBP	B	601	-	15,15,15	0.63	0	20,20,20	1.06	1 (5%)
8	AKR	B	611	-	4,4,4	1.75	2 (50%)	4,4,4	1.77	2 (50%)
9	EDO	A	615	-	3,3,3	0.59	0	2,2,2	0.63	0
8	AKR	A	610	-	4,4,4	1.46	1 (25%)	4,4,4	1.58	1 (25%)
9	EDO	A	612	-	3,3,3	0.40	0	2,2,2	0.49	0
9	EDO	B	615	-	3,3,3	0.55	0	2,2,2	0.46	0
7	NAG	B	609	1	14,14,15	0.62	1 (7%)	17,19,21	0.71	0
9	EDO	B	617	-	3,3,3	0.48	0	2,2,2	0.28	0
9	EDO	A	611	-	3,3,3	0.79	0	2,2,2	0.51	0
8	AKR	B	610	-	4,4,4	1.69	1 (25%)	4,4,4	1.08	0
9	EDO	B	612	-	3,3,3	0.64	0	2,2,2	0.62	0
9	EDO	B	616	-	3,3,3	0.52	0	2,2,2	0.38	0
6	BOG	A	603	-	20,20,20	0.89	1 (5%)	25,25,25	1.17	1 (4%)
6	BOG	A	604	-	20,20,20	0.93	1 (5%)	25,25,25	1.05	2 (8%)
9	EDO	A	616	-	3,3,3	0.50	0	2,2,2	0.35	0
9	EDO	B	613	-	3,3,3	0.54	0	2,2,2	0.39	0
9	EDO	B	614	-	3,3,3	0.62	0	2,2,2	0.55	0
6	BOG	B	603	-	20,20,20	0.92	1 (5%)	25,25,25	0.99	0
9	EDO	A	613	-	3,3,3	0.50	0	2,2,2	0.41	0

In the following table, the Chirals column lists the number of chiral outliers, the number of chiral centers analysed, the number of these observed in the model and the number defined in the Chemical Component Dictionary. Similar counts are reported in the Torsion and Rings columns. '-' means no outliers of that kind were identified.

Mol	Type	Chain	Res	Link	Chirals	Torsions	Rings
5	HEM	A	602	1,10	-	3/14/54/54	-
9	EDO	B	618	-	-	1/1/1/1	-
7	NAG	A	605	1	-	2/6/23/26	0/1/1/1
7	NAG	A	608	1	-	1/6/23/26	0/1/1/1
8	AKR	A	609	-	-	2/2/2/2	-
4	IBP	A	601	-	-	1/12/12/12	0/1/1/1
5	HEM	B	602	1,10	-	2/14/54/54	-
9	EDO	A	614	-	-	0/1/1/1	-
4	IBP	B	601	-	-	0/12/12/12	0/1/1/1
8	AKR	B	611	-	-	1/2/2/2	-
9	EDO	A	615	-	-	0/1/1/1	-
8	AKR	A	610	-	-	2/2/2/2	-
9	EDO	A	612	-	-	0/1/1/1	-
9	EDO	B	615	-	-	0/1/1/1	-

Continued on next page...

Continued from previous page...

Mol	Type	Chain	Res	Link	Chirals	Torsions	Rings
7	NAG	B	609	1	-	0/6/23/26	0/1/1/1
9	EDO	B	617	-	-	1/1/1/1	-
9	EDO	A	611	-	-	0/1/1/1	-
8	AKR	B	610	-	-	2/2/2/2	-
9	EDO	B	612	-	-	0/1/1/1	-
9	EDO	B	616	-	-	1/1/1/1	-
6	BOG	A	603	-	-	7/11/31/31	0/1/1/1
6	BOG	A	604	-	-	7/11/31/31	0/1/1/1
9	EDO	A	616	-	-	0/1/1/1	-
9	EDO	B	613	-	-	0/1/1/1	-
9	EDO	B	614	-	-	0/1/1/1	-
6	BOG	B	603	-	-	7/11/31/31	0/1/1/1
9	EDO	A	613	-	-	1/1/1/1	-

The worst 5 of 27 bond length outliers are listed below:

Mol	Chain	Res	Type	Atoms	Z	Observed(Å)	Ideal(Å)
5	B	602	HEM	C3D-C2D	7.25	1.52	1.36
5	A	602	HEM	C3D-C2D	7.10	1.52	1.36
5	B	602	HEM	FE-NB	5.48	2.11	1.94
5	A	602	HEM	FE-ND	5.08	2.10	1.94
5	B	602	HEM	FE-NA	4.13	2.08	1.95

The worst 5 of 32 bond angle outliers are listed below:

Mol	Chain	Res	Type	Atoms	Z	Observed(°)	Ideal(°)
5	B	602	HEM	C4D-ND-C1D	6.43	112.83	105.21
5	A	602	HEM	C4D-ND-C1D	5.49	111.71	105.21
6	A	603	BOG	C1'-O1-C1	4.04	120.59	113.68
5	B	602	HEM	CBD-CAD-C3D	-3.68	102.37	112.53
5	A	602	HEM	C1B-NB-C4B	3.36	109.18	105.21

There are no chirality outliers.

5 of 41 torsion outliers are listed below:

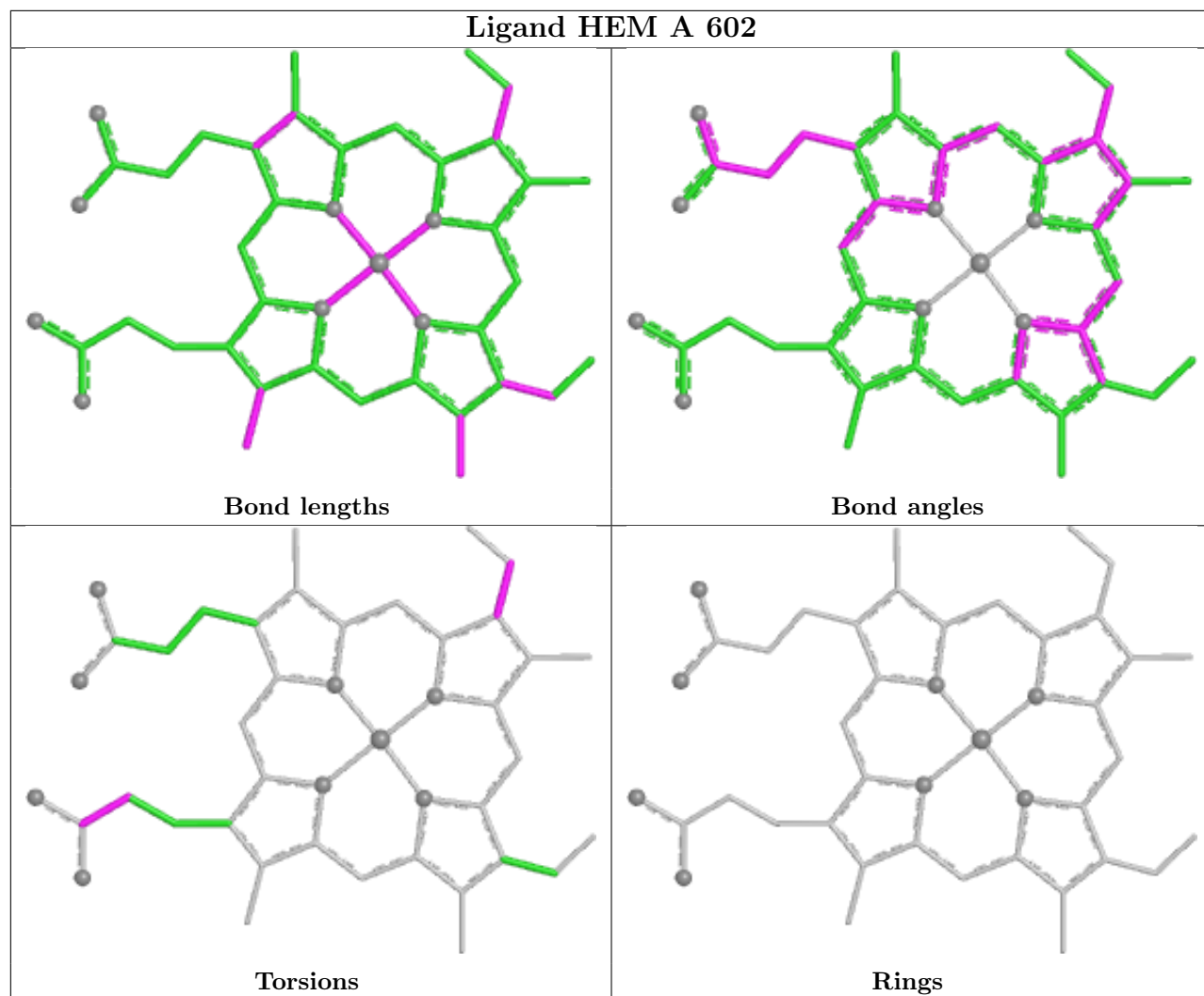
Mol	Chain	Res	Type	Atoms
6	B	603	BOG	C2-C1-O1-C1'
8	A	609	AKR	O-C-CA-CB
8	A	609	AKR	OXT-C-CA-CB
8	A	610	AKR	O-C-CA-CB
8	B	610	AKR	OXT-C-CA-CB

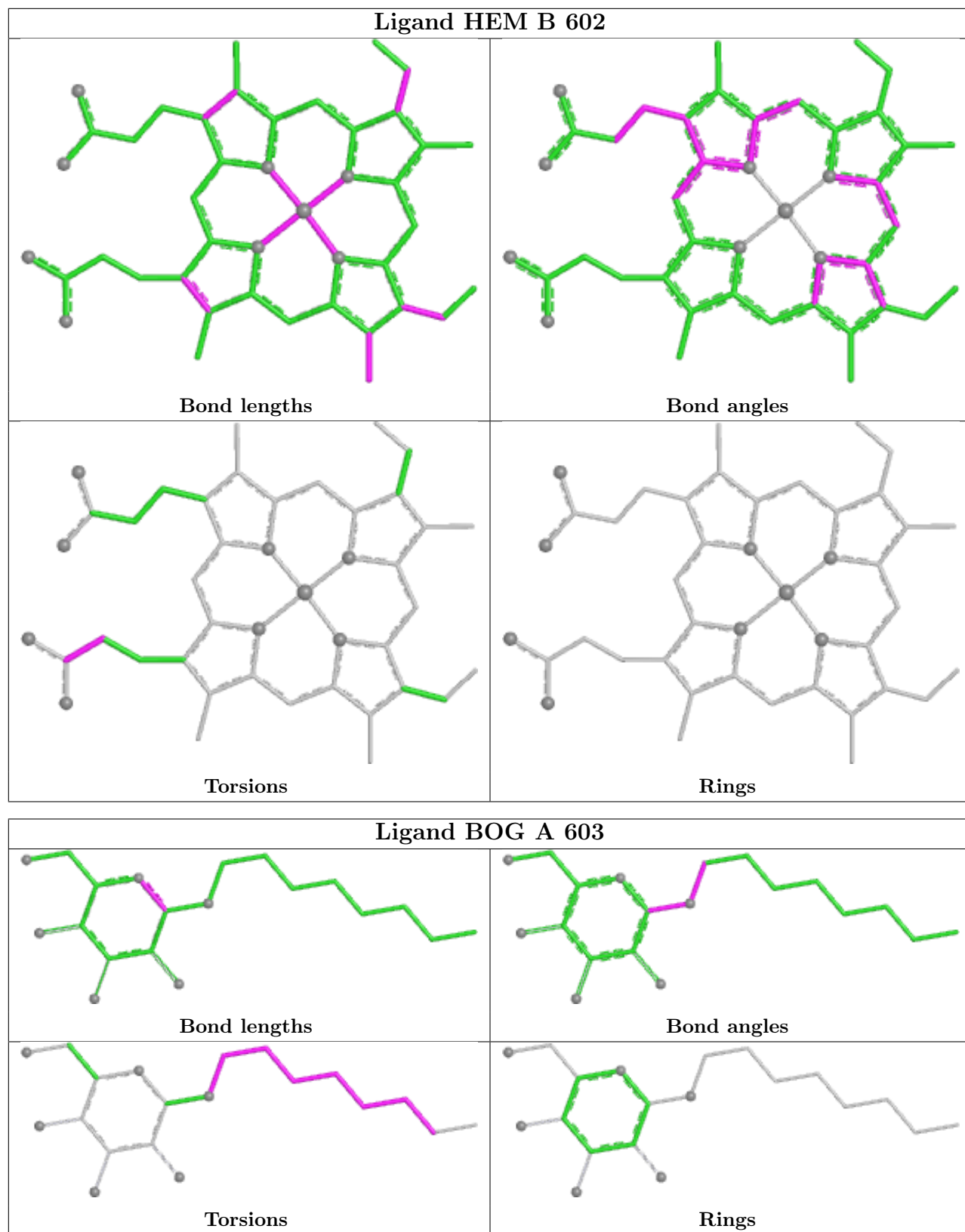
There are no ring outliers.

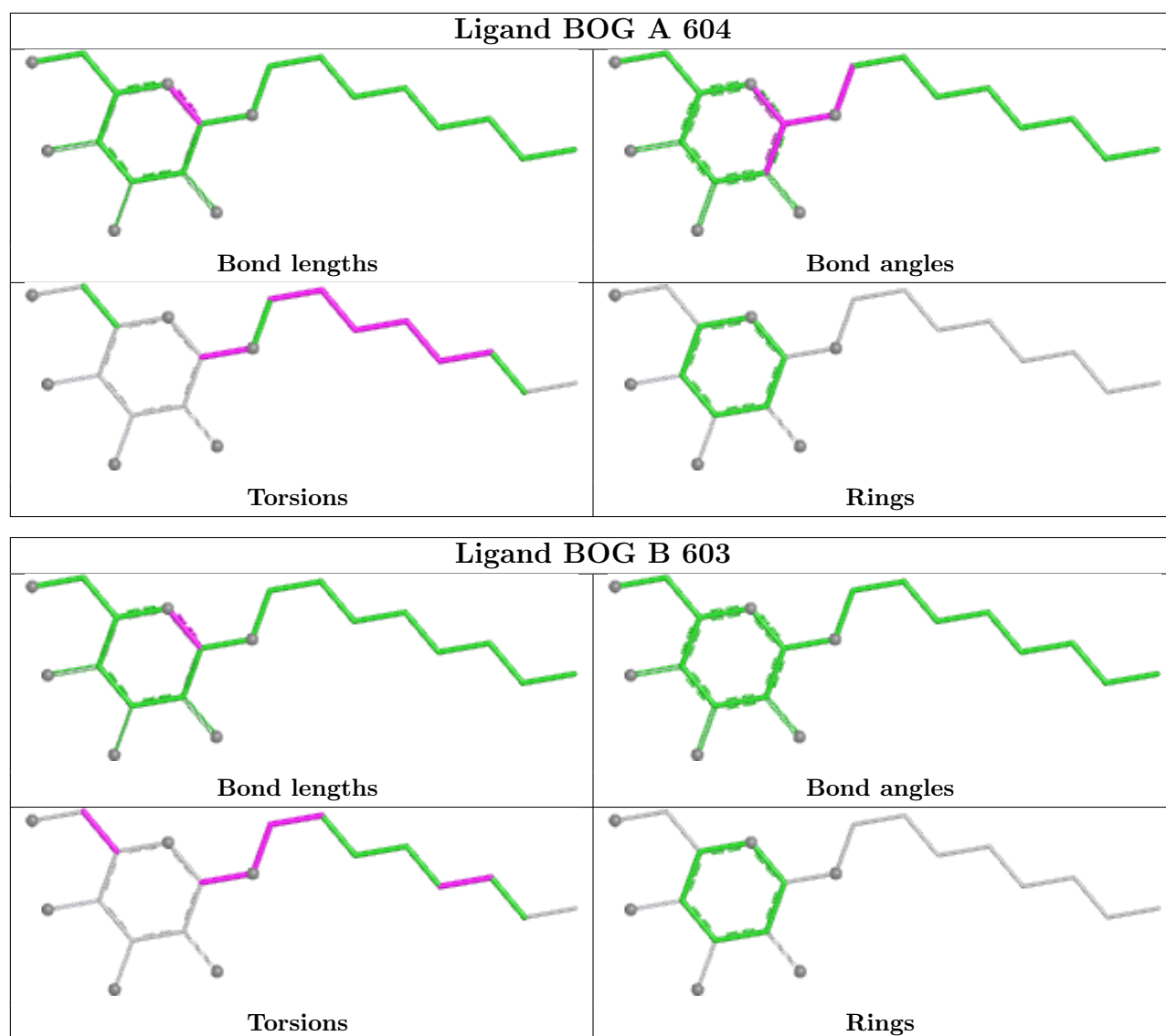
13 monomers are involved in 27 short contacts:

Mol	Chain	Res	Type	Clashes	Symm-Clashes
5	A	602	HEM	2	0
8	A	609	AKR	5	0
5	B	602	HEM	3	0
9	A	614	EDO	1	0
8	B	611	AKR	6	0
8	A	610	AKR	1	0
9	B	615	EDO	1	0
8	B	610	AKR	1	0
9	B	616	EDO	1	0
6	A	603	BOG	1	0
6	A	604	BOG	2	0
9	A	616	EDO	1	0
9	A	613	EDO	2	0

The following is a two-dimensional graphical depiction of Mogul quality analysis of bond lengths, bond angles, torsion angles, and ring geometry for all instances of the Ligand of Interest. In addition, ligands with molecular weight > 250 and outliers as shown on the validation Tables will also be included. For torsion angles, if less than 5% of the Mogul distribution of torsion angles is within 10 degrees of the torsion angle in question, then that torsion angle is considered an outlier. Any bond that is central to one or more torsion angles identified as an outlier by Mogul will be highlighted in the graph. For rings, the root-mean-square deviation (RMSD) between the ring in question and similar rings identified by Mogul is calculated over all ring torsion angles. If the average RMSD is greater than 60 degrees and the minimal RMSD between the ring in question and any Mogul-identified rings is also greater than 60 degrees, then that ring is considered an outlier. The outliers are highlighted in purple. The color gray indicates Mogul did not find sufficient equivalents in the CSD to analyse the geometry.







## 5.7 Other polymers [i](#)

There are no such residues in this entry.

## 5.8 Polymer linkage issues [i](#)

There are no chain breaks in this entry.

## 6 Fit of model and data [i](#)

### 6.1 Protein, DNA and RNA chains [i](#)

In the following table, the column labelled '#RSRZ > 2' contains the number (and percentage) of RSRZ outliers, followed by percent RSRZ outliers for the chain as percentile scores relative to all X-ray entries and entries of similar resolution. The OWAB column contains the minimum, median, 95<sup>th</sup> percentile and maximum values of the occupancy-weighted average B-factor per residue. The column labelled 'Q < 0.9' lists the number of (and percentage) of residues with an average occupancy less than 0.9.

Mol	Chain	Analysed	<RSRZ>	#RSRZ>2	OWAB(Å <sup>2</sup> )	Q<0.9
1	A	551/551 (100%)	-0.32	5 (0%) 81 85	11, 28, 48, 67	5 (0%)
1	B	551/551 (100%)	-0.41	3 (0%) 87 90	10, 26, 41, 70	3 (0%)
All	All	1102/1102 (100%)	-0.37	8 (0%) 84 88	10, 27, 45, 70	8 (0%)

The worst 5 of 8 RSRZ outliers are listed below:

Mol	Chain	Res	Type	RSRZ
1	A	410	TYR	3.5
1	B	410	TYR	2.9
1	B	279	HIS	2.6
1	B	53	ASP	2.3
1	A	74	PHE	2.3

### 6.2 Non-standard residues in protein, DNA, RNA chains [i](#)

There are no non-standard protein/DNA/RNA residues in this entry.

### 6.3 Carbohydrates [i](#)

In the following table, the Atoms column lists the number of modelled atoms in the group and the number defined in the chemical component dictionary. The B-factors column lists the minimum, median, 95<sup>th</sup> percentile and maximum values of B factors of atoms in the group. The column labelled 'Q < 0.9' lists the number of atoms with occupancy less than 0.9.

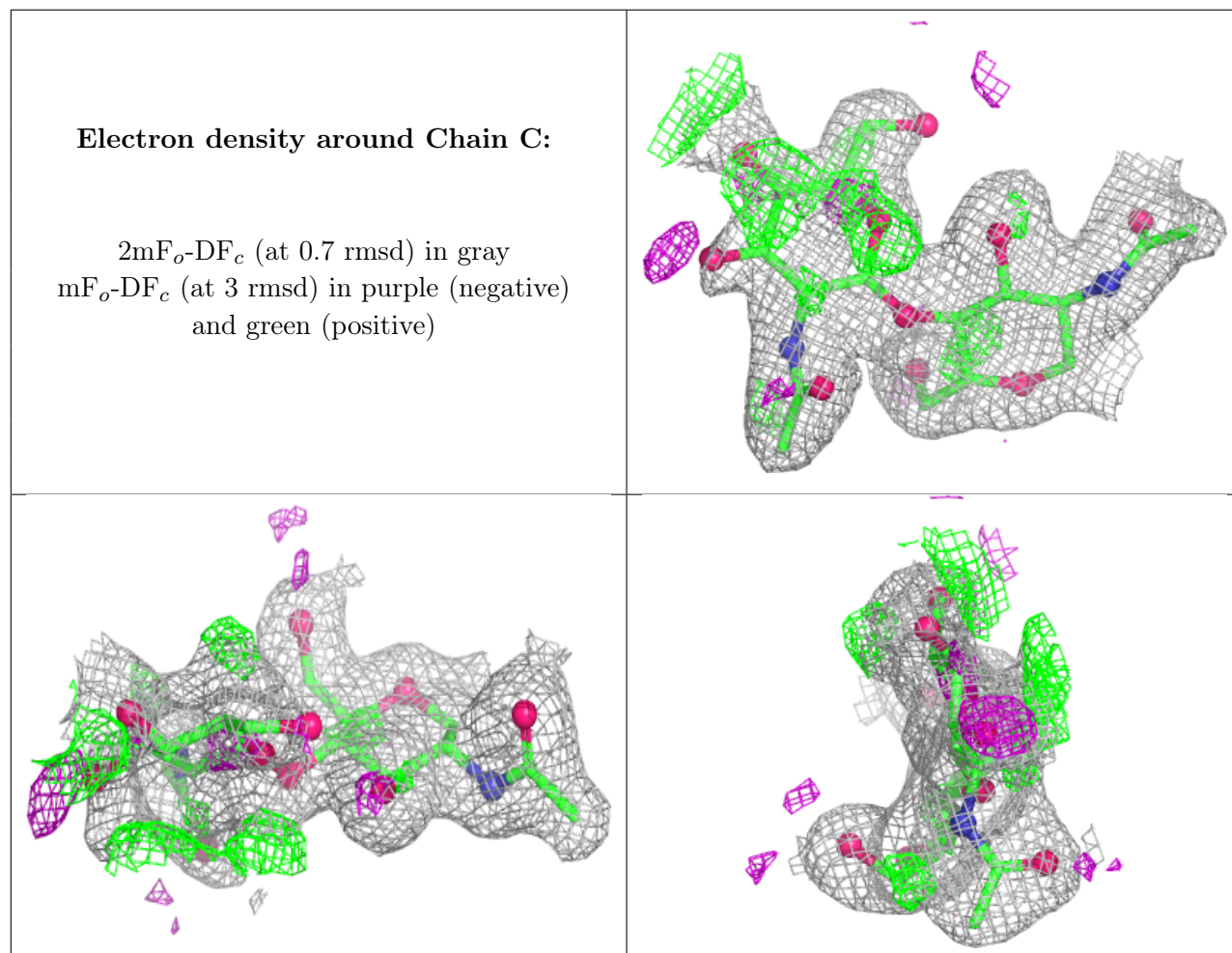
Mol	Type	Chain	Res	Atoms	RSCC	RSR	B-factors(Å <sup>2</sup> )	Q<0.9
3	MAN	E	3	11/12	0.47	0.17	64,68,73,78	0
2	NAG	D	2	14/15	0.59	0.14	68,72,77,82	0
2	NAG	C	2	14/15	0.76	0.15	37,47,55,58	0
3	NAG	E	2	14/15	0.86	0.11	37,41,52,61	0
2	NAG	D	1	14/15	0.86	0.11	41,49,60,67	0

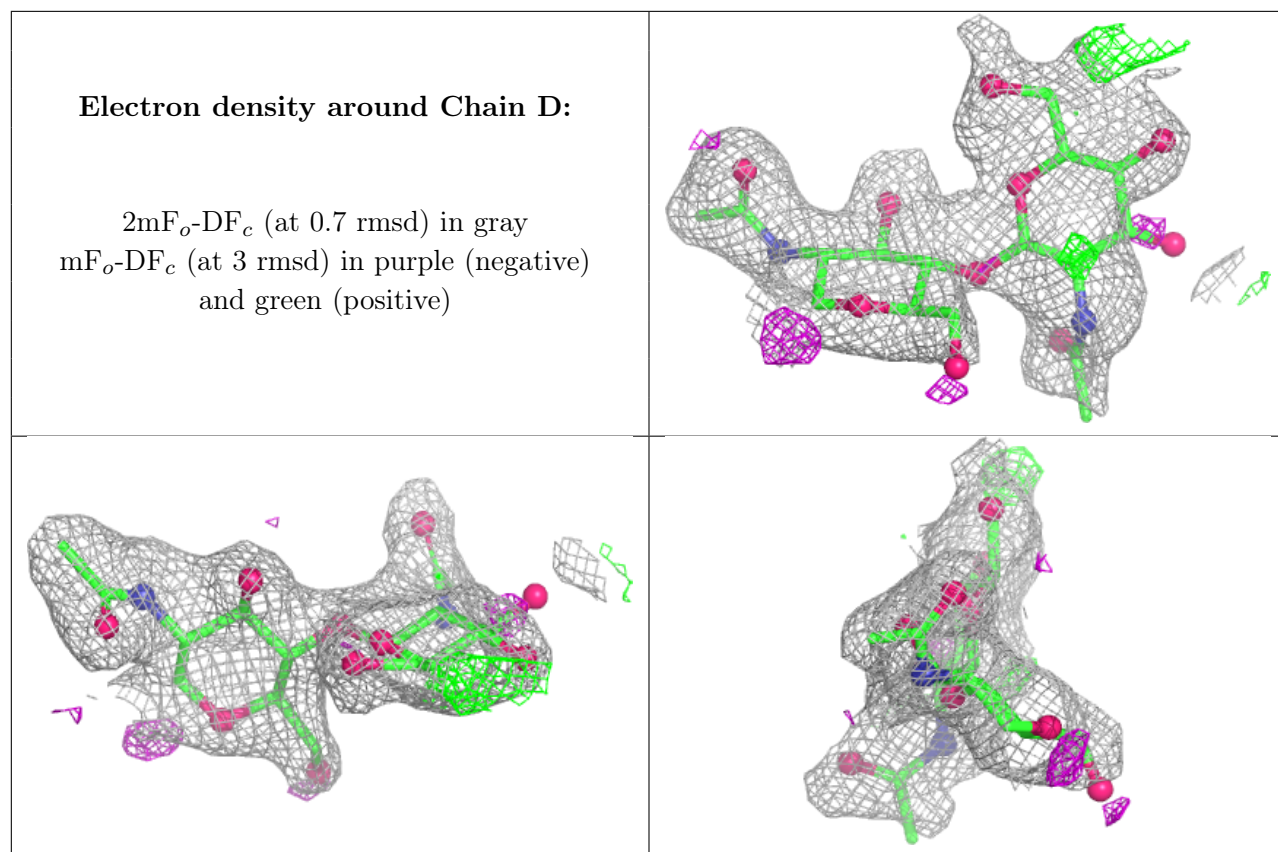
*Continued on next page...*

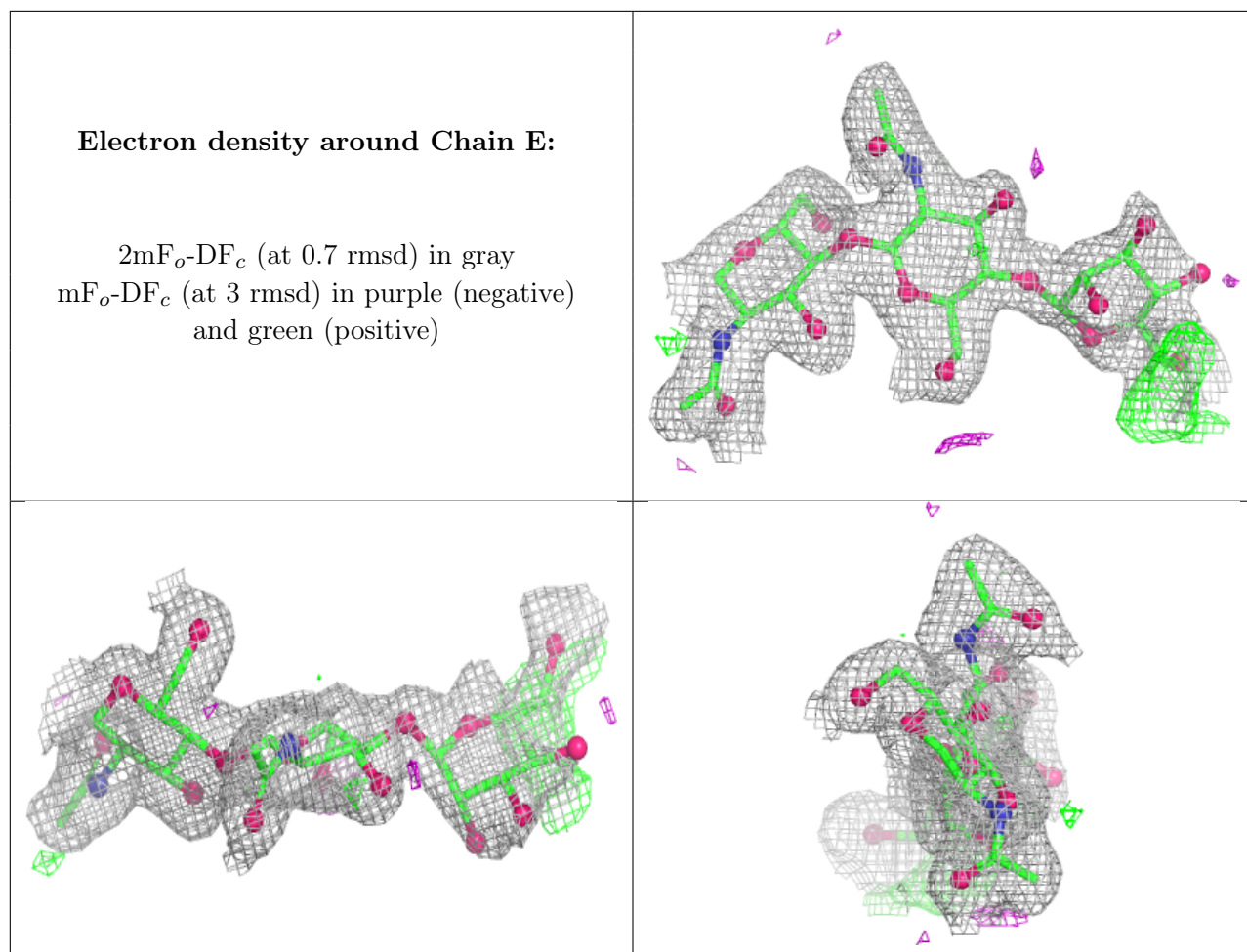
Continued from previous page...

Mol	Type	Chain	Res	Atoms	RSCC	RSR	B-factors( $\text{\AA}^2$ )	Q<0.9
2	NAG	C	1	14/15	0.95	0.08	25,29,35,39	0
3	NAG	E	1	14/15	0.96	0.06	24,31,34,40	0

The following is a graphical depiction of the model fit to experimental electron density for oligosaccharide. Each fit is shown from different orientation to approximate a three-dimensional view.







## 6.4 Ligands [i](#)

In the following table, the Atoms column lists the number of modelled atoms in the group and the number defined in the chemical component dictionary. The B-factors column lists the minimum, median, 95<sup>th</sup> percentile and maximum values of B factors of atoms in the group. The column labelled 'Q< 0.9' lists the number of atoms with occupancy less than 0.9.

Mol	Type	Chain	Res	Atoms	RSCC	RSR	B-factors(Å <sup>2</sup> )	Q<0.9
7	NAG	A	605	14/15	0.71	0.15	48,54,61,64	0
8	AKR	A	609	5/5	0.81	0.14	28,41,46,47	0
9	EDO	B	615	4/4	0.81	0.23	34,37,39,54	0
7	NAG	A	608	14/15	0.83	0.11	44,51,58,59	0
9	EDO	B	612	4/4	0.85	0.17	24,27,30,35	0
9	EDO	B	617	4/4	0.85	0.16	37,41,44,44	0
6	BOG	A	604	20/20	0.86	0.12	42,48,52,53	0
8	AKR	B	610	5/5	0.86	0.15	36,38,39,45	0
8	AKR	B	611	5/5	0.86	0.14	30,31,42,44	0
9	EDO	A	611	4/4	0.87	0.16	28,31,31,37	0
7	NAG	B	609	14/15	0.87	0.09	34,39,46,46	0

*Continued on next page...*

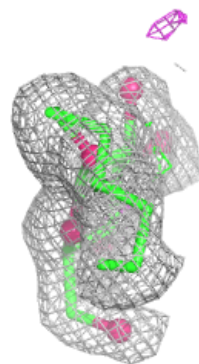
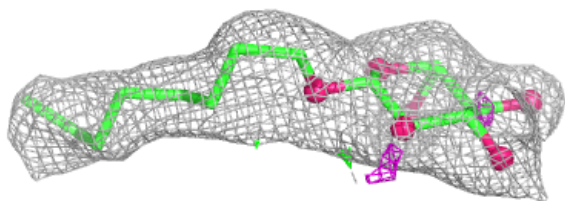
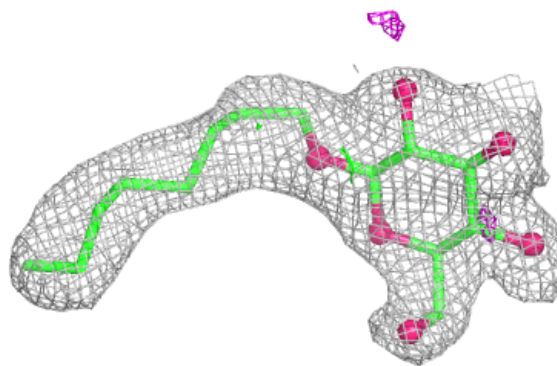
*Continued from previous page...*

Mol	Type	Chain	Res	Atoms	RSCC	RSR	B-factors(Å <sup>2</sup> )	Q<0.9
8	AKR	A	610	5/5	0.88	0.13	32,35,43,43	0
6	BOG	B	603	20/20	0.89	0.10	41,44,47,49	0
9	EDO	A	613	4/4	0.89	0.20	38,38,41,43	0
9	EDO	A	615	4/4	0.89	0.12	30,32,35,41	0
9	EDO	B	614	4/4	0.91	0.17	30,35,36,41	0
9	EDO	B	618	4/4	0.91	0.15	27,29,31,33	0
4	IBP	B	601	15/15	0.93	0.07	22,24,29,29	0
9	EDO	A	616	4/4	0.94	0.11	26,28,29,32	0
4	IBP	A	601	15/15	0.94	0.07	24,28,31,33	0
6	BOG	A	603	20/20	0.95	0.08	27,32,38,40	0
9	EDO	B	616	4/4	0.95	0.11	23,28,28,31	0
9	EDO	B	613	4/4	0.96	0.08	22,26,28,29	0
9	EDO	A	612	4/4	0.96	0.08	25,28,30,32	0
9	EDO	A	614	4/4	0.97	0.08	26,27,31,32	0
5	HEM	B	602	43/43	0.98	0.06	18,23,35,56	0
5	HEM	A	602	43/43	0.98	0.06	20,24,34,54	0

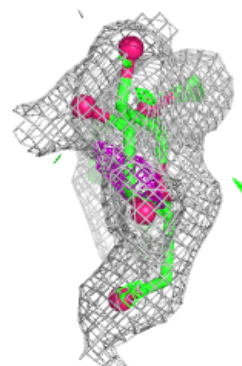
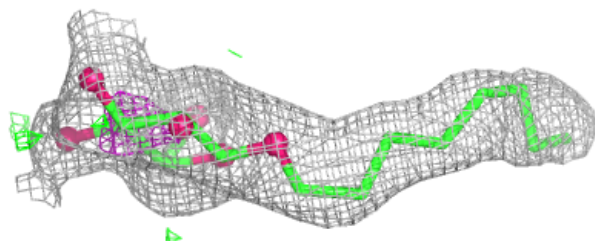
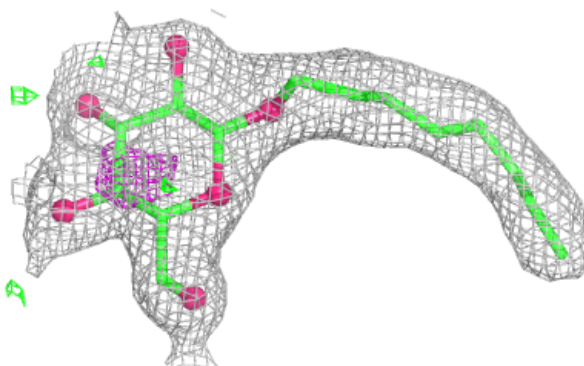
The following is a graphical depiction of the model fit to experimental electron density of all instances of the Ligand of Interest. In addition, ligands with molecular weight > 250 and outliers as shown on the geometry validation Tables will also be included. Each fit is shown from different orientation to approximate a three-dimensional view.

**Electron density around BOG A 604:**

$2mF_o-DF_c$  (at 0.7 rmsd) in gray  
 $mF_o-DF_c$  (at 3 rmsd) in purple (negative)  
and green (positive)

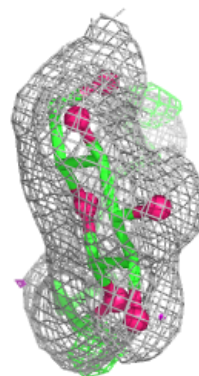
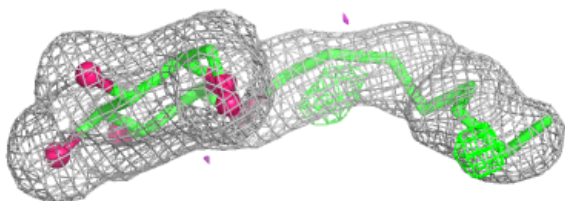
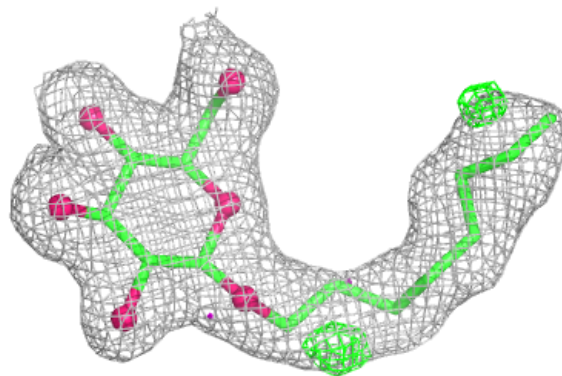
**Electron density around BOG B 603:**

$2mF_o-DF_c$  (at 0.7 rmsd) in gray  
 $mF_o-DF_c$  (at 3 rmsd) in purple (negative)  
and green (positive)



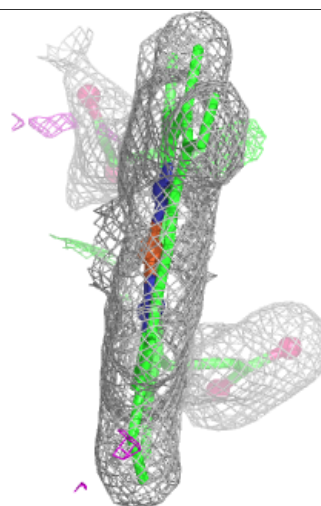
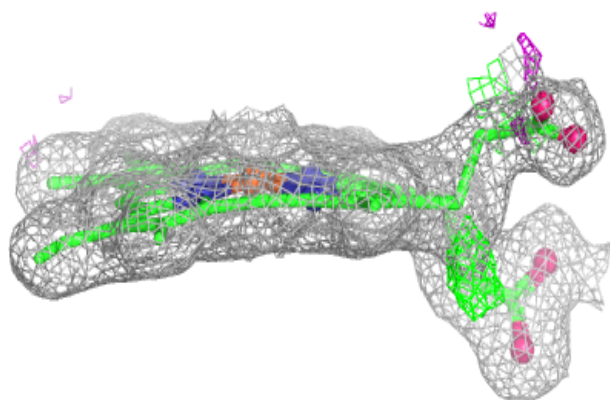
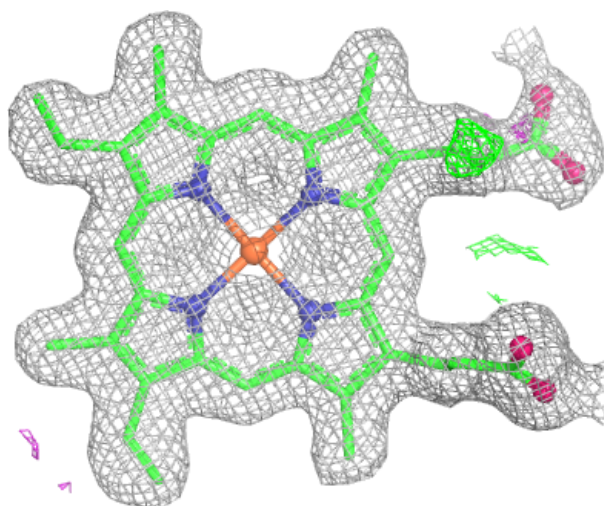
**Electron density around BOG A 603:**

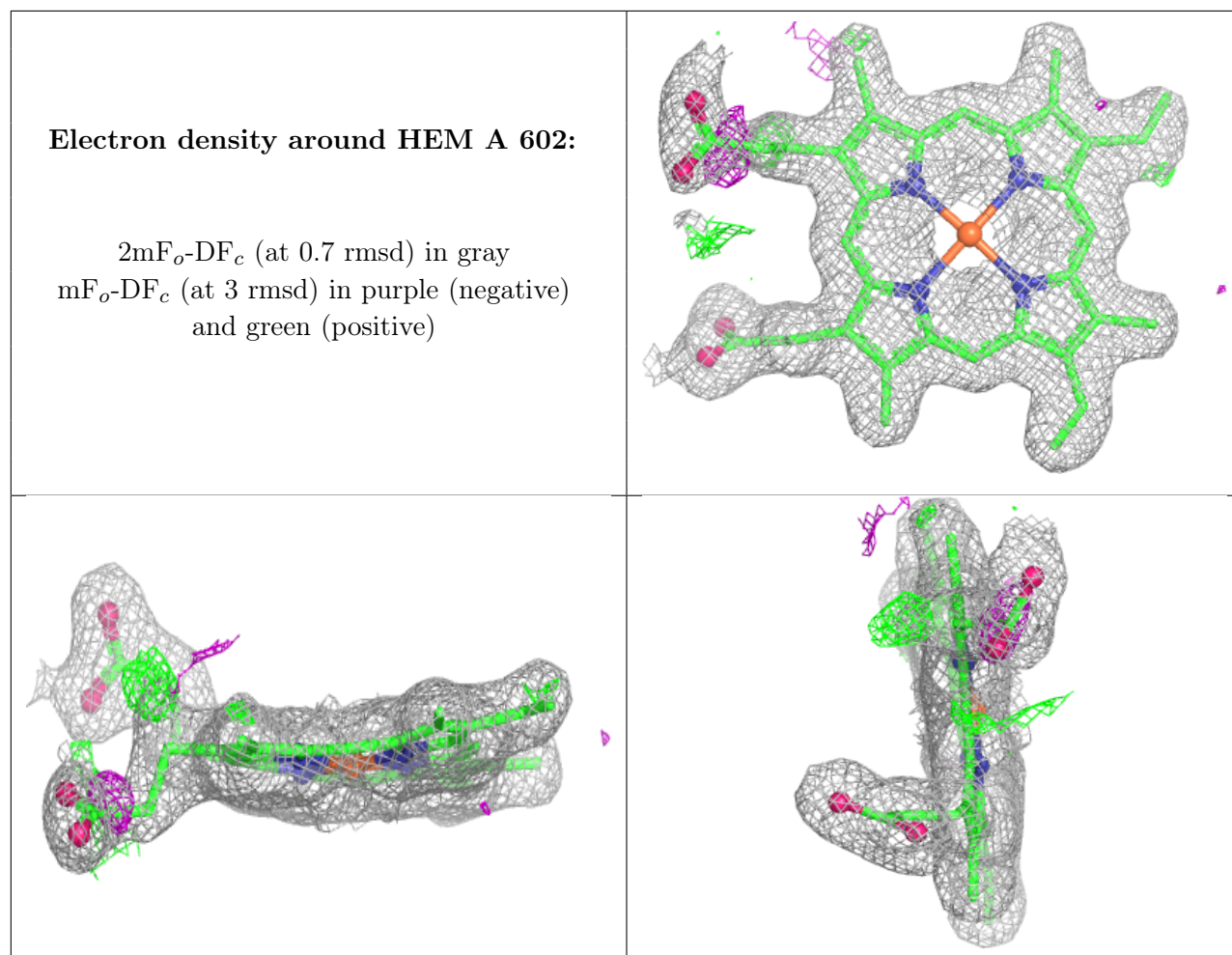
$2mF_o-DF_c$  (at 0.7 rmsd) in gray  
 $mF_o-DF_c$  (at 3 rmsd) in purple (negative)  
and green (positive)



**Electron density around HEM B 602:**

$2mF_o-DF_c$  (at 0.7 rmsd) in gray  
 $mF_o-DF_c$  (at 3 rmsd) in purple (negative)  
and green (positive)





## 6.5 Other polymers [i](#)

There are no such residues in this entry.