



# wwPDB X-ray Structure Validation Summary Report ⓘ

Mar 6, 2026 – 08:46 AM UTC

PDB ID : 3PGV / pdb\_00003pgv  
Title : Crystal structure of a haloacid dehalogenase-like hydrolase (KPN\_04322) from *Klebsiella pneumoniae* subsp. *pneumoniae* MGH 78578 at 2.39 Å resolution  
Authors : Joint Center for Structural Genomics (JCSG)  
Deposited on : 2010-11-02  
Resolution : 2.39 Å (reported)

This is a wwPDB X-ray Structure Validation Summary Report for a publicly released PDB entry.

We welcome your comments at [validation@mail.wwpdb.org](mailto:validation@mail.wwpdb.org)

A user guide is available at

<https://www.wwpdb.org/validation/2017/XrayValidationReportHelp>

with specific help available everywhere you see the ⓘ symbol.

The types of validation reports are described at

<http://www.wwpdb.org/validation/2017/FAQs#types>.

---

The following versions of software and data (see [references ⓘ](#)) were used in the production of this report:

MolProbity : 4-5-2 with Phenix2.0  
Mogul : 2022.3.0, CSD as543be (2022)  
Xtriage (Phenix) : 2.0  
EDS : 3.0  
Percentile statistics : 20250101.v01 (using entries in the PDB archive January 1st 2025)  
CCP4 : 9.0.010 (Gargrove)  
Density-Fitness : 1.0.12  
Ideal geometry (proteins) : Engh & Huber (2001)  
Ideal geometry (DNA, RNA) : Parkinson et al. (1996)  
Validation Pipeline (wwPDB-VP) : 2.49

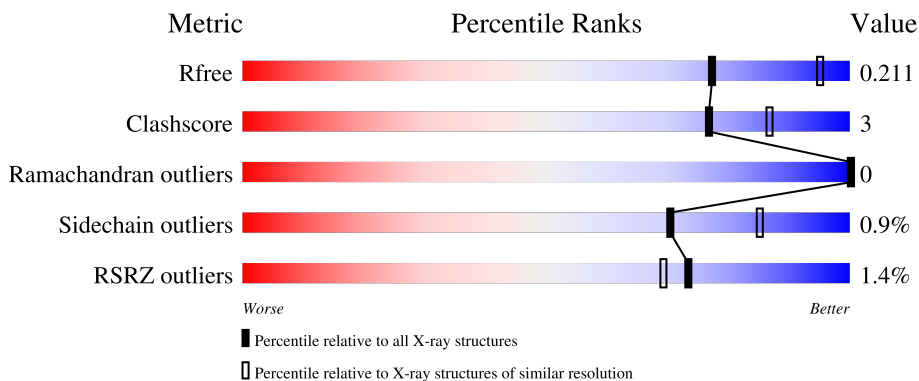
# 1 Overall quality at a glance

The following experimental techniques were used to determine the structure:

*X-RAY DIFFRACTION*

The reported resolution of this entry is 2.39 Å.

Percentile scores (ranging between 0-100) for global validation metrics of the entry are shown in the following graphic. The table shows the number of entries on which the scores are based.



Metric	Whole archive (#Entries)	Similar resolution (#Entries, resolution range(Å))
$R_{free}$	180053	4912 (2.40-2.40)
Clashscore	190562	5391 (2.40-2.40)
Ramachandran outliers	187476	5320 (2.40-2.40)
Sidechain outliers	187428	5321 (2.40-2.40)
RSRZ outliers	180081	4916 (2.40-2.40)

The table below summarises the geometric issues observed across the polymeric chains and their fit to the electron density. The red, orange, yellow and green segments of the lower bar indicate the fraction of residues that contain outliers for  $\geq 3$ , 2, 1 and 0 types of geometric quality criteria respectively. A grey segment represents the fraction of residues that are not modelled. The numeric value for each fraction is indicated below the corresponding segment, with a dot representing fractions  $\leq 5\%$ . The upper red bar (where present) indicates the fraction of residues that have poor fit to the electron density. The numeric value is given above the bar.

Mol	Chain	Length	Quality of chain
1	A	285	 84% 7% 9%
1	B	285	 85% 5% 10%
1	C	285	 84% 7% 9%
1	D	285	 84% 6% 10%

## 2 Entry composition [i](#)

There are 6 unique types of molecules in this entry. The entry contains 8764 atoms, of which 0 are hydrogens and 0 are deuteriums.

In the tables below, the ZeroOcc column contains the number of atoms modelled with zero occupancy, the AltConf column contains the number of residues with at least one atom in alternate conformation and the Trace column contains the number of residues modelled with at most 2 atoms.

- Molecule 1 is a protein called haloacid dehalogenase-like hydrolase.

Mol	Chain	Residues	Atoms						ZeroOcc	AltConf	Trace
			Total	C	N	O	S	Se			
1	A	259	2065	1306	359	387	4	9	0	3	0
1	B	257	2048	1292	355	387	4	10	0	4	0
1	C	258	2023	1277	354	379	4	9	0	2	0
1	D	257	2044	1289	359	382	4	10	0	3	0

There are 76 discrepancies between the modelled and reference sequences:

Chain	Residue	Modelled	Actual	Comment	Reference
A	-18	MSE	-	expression tag	UNP A6TGK6
A	-17	GLY	-	expression tag	UNP A6TGK6
A	-16	SER	-	expression tag	UNP A6TGK6
A	-15	ASP	-	expression tag	UNP A6TGK6
A	-14	LYS	-	expression tag	UNP A6TGK6
A	-13	ILE	-	expression tag	UNP A6TGK6
A	-12	HIS	-	expression tag	UNP A6TGK6
A	-11	HIS	-	expression tag	UNP A6TGK6
A	-10	HIS	-	expression tag	UNP A6TGK6
A	-9	HIS	-	expression tag	UNP A6TGK6
A	-8	HIS	-	expression tag	UNP A6TGK6
A	-7	HIS	-	expression tag	UNP A6TGK6
A	-6	GLU	-	expression tag	UNP A6TGK6
A	-5	ASN	-	expression tag	UNP A6TGK6
A	-4	LEU	-	expression tag	UNP A6TGK6
A	-3	TYR	-	expression tag	UNP A6TGK6
A	-2	PHE	-	expression tag	UNP A6TGK6
A	-1	GLN	-	expression tag	UNP A6TGK6
A	0	GLY	-	expression tag	UNP A6TGK6
B	-18	MSE	-	expression tag	UNP A6TGK6
B	-17	GLY	-	expression tag	UNP A6TGK6

*Continued on next page...*

*Continued from previous page...*

Chain	Residue	Modelled	Actual	Comment	Reference
B	-16	SER	-	expression tag	UNP A6TGK6
B	-15	ASP	-	expression tag	UNP A6TGK6
B	-14	LYS	-	expression tag	UNP A6TGK6
B	-13	ILE	-	expression tag	UNP A6TGK6
B	-12	HIS	-	expression tag	UNP A6TGK6
B	-11	HIS	-	expression tag	UNP A6TGK6
B	-10	HIS	-	expression tag	UNP A6TGK6
B	-9	HIS	-	expression tag	UNP A6TGK6
B	-8	HIS	-	expression tag	UNP A6TGK6
B	-7	HIS	-	expression tag	UNP A6TGK6
B	-6	GLU	-	expression tag	UNP A6TGK6
B	-5	ASN	-	expression tag	UNP A6TGK6
B	-4	LEU	-	expression tag	UNP A6TGK6
B	-3	TYR	-	expression tag	UNP A6TGK6
B	-2	PHE	-	expression tag	UNP A6TGK6
B	-1	GLN	-	expression tag	UNP A6TGK6
B	0	GLY	-	expression tag	UNP A6TGK6
C	-18	MSE	-	expression tag	UNP A6TGK6
C	-17	GLY	-	expression tag	UNP A6TGK6
C	-16	SER	-	expression tag	UNP A6TGK6
C	-15	ASP	-	expression tag	UNP A6TGK6
C	-14	LYS	-	expression tag	UNP A6TGK6
C	-13	ILE	-	expression tag	UNP A6TGK6
C	-12	HIS	-	expression tag	UNP A6TGK6
C	-11	HIS	-	expression tag	UNP A6TGK6
C	-10	HIS	-	expression tag	UNP A6TGK6
C	-9	HIS	-	expression tag	UNP A6TGK6
C	-8	HIS	-	expression tag	UNP A6TGK6
C	-7	HIS	-	expression tag	UNP A6TGK6
C	-6	GLU	-	expression tag	UNP A6TGK6
C	-5	ASN	-	expression tag	UNP A6TGK6
C	-4	LEU	-	expression tag	UNP A6TGK6
C	-3	TYR	-	expression tag	UNP A6TGK6
C	-2	PHE	-	expression tag	UNP A6TGK6
C	-1	GLN	-	expression tag	UNP A6TGK6
C	0	GLY	-	expression tag	UNP A6TGK6
D	-18	MSE	-	expression tag	UNP A6TGK6
D	-17	GLY	-	expression tag	UNP A6TGK6
D	-16	SER	-	expression tag	UNP A6TGK6
D	-15	ASP	-	expression tag	UNP A6TGK6
D	-14	LYS	-	expression tag	UNP A6TGK6
D	-13	ILE	-	expression tag	UNP A6TGK6

*Continued on next page...*

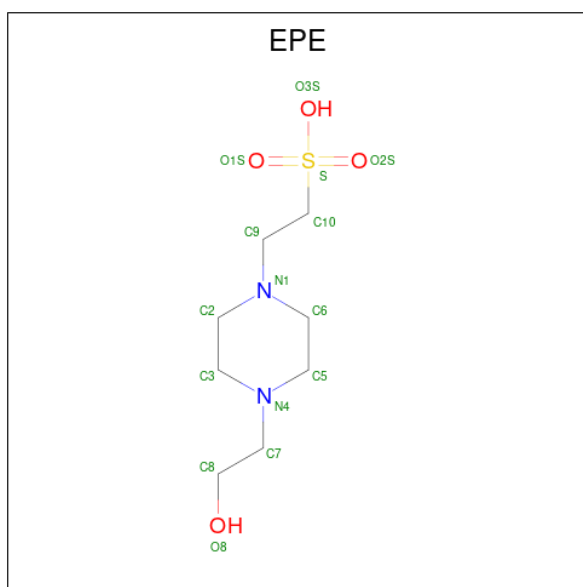
*Continued from previous page...*

Chain	Residue	Modelled	Actual	Comment	Reference
D	-12	HIS	-	expression tag	UNP A6TGK6
D	-11	HIS	-	expression tag	UNP A6TGK6
D	-10	HIS	-	expression tag	UNP A6TGK6
D	-9	HIS	-	expression tag	UNP A6TGK6
D	-8	HIS	-	expression tag	UNP A6TGK6
D	-7	HIS	-	expression tag	UNP A6TGK6
D	-6	GLU	-	expression tag	UNP A6TGK6
D	-5	ASN	-	expression tag	UNP A6TGK6
D	-4	LEU	-	expression tag	UNP A6TGK6
D	-3	TYR	-	expression tag	UNP A6TGK6
D	-2	PHE	-	expression tag	UNP A6TGK6
D	-1	GLN	-	expression tag	UNP A6TGK6
D	0	GLY	-	expression tag	UNP A6TGK6

- Molecule 2 is CALCIUM ION (CCD ID: CA) (formula: Ca).

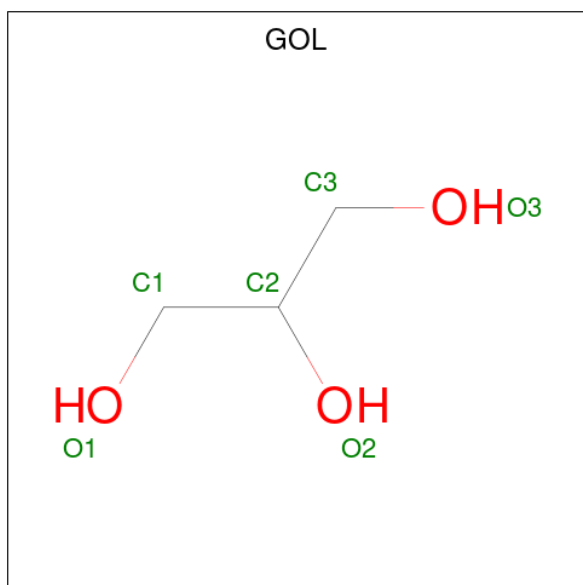
Mol	Chain	Residues	Atoms	ZeroOcc	AltConf
2	A	1	Total Ca 1 1	0	0
2	B	1	Total Ca 1 1	0	0
2	C	1	Total Ca 1 1	0	0
2	D	1	Total Ca 1 1	0	0

- Molecule 3 is 4-(2-HYDROXYETHYL)-1-PIPERAZINE ETHANESULFONIC ACID (CCD ID: EPE) (formula: C<sub>8</sub>H<sub>18</sub>N<sub>2</sub>O<sub>4</sub>S).



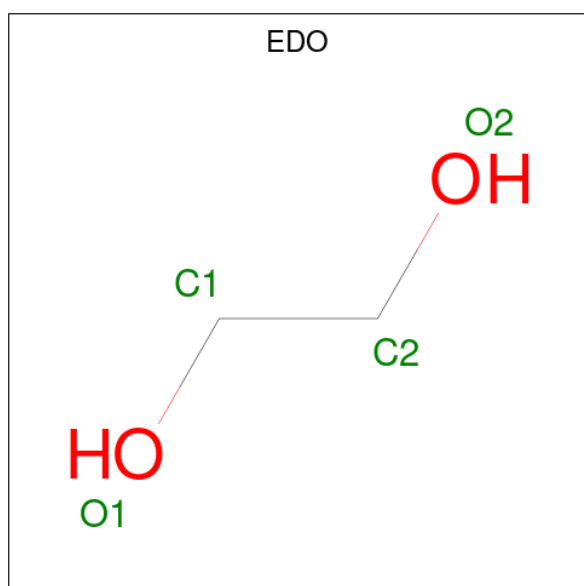
Mol	Chain	Residues	Atoms					ZeroOcc	AltConf
			Total	C	N	O	S		
3	A	1	Total 13	C 7	N 2	O 3	S 1	0	0
3	B	1	Total 15	C 8	N 2	O 4	S 1	0	0
3	C	1	Total 14	C 8	N 2	O 3	S 1	0	0
3	D	1	Total 14	C 8	N 2	O 3	S 1	0	0

- Molecule 4 is GLYCEROL (CCD ID: GOL) (formula: C<sub>3</sub>H<sub>8</sub>O<sub>3</sub>).



Mol	Chain	Residues	Atoms			ZeroOcc	AltConf
4	A	1	Total	C	O	0	0
			6	3	3		
4	B	1	Total	C	O	0	0
			6	3	3		
4	C	1	Total	C	O	0	0
			6	3	3		
4	D	1	Total	C	O	0	0
			6	3	3		

- Molecule 5 is 1,2-ETHANEDIOL (CCD ID: EDO) (formula: C<sub>2</sub>H<sub>6</sub>O<sub>2</sub>).



Mol	Chain	Residues	Atoms			ZeroOcc	AltConf
5	A	1	Total	C	O	0	0
			4	2	2		
5	A	1	Total	C	O	0	0
			4	2	2		
5	A	1	Total	C	O	0	0
			4	2	2		
5	A	1	Total	C	O	0	0
			4	2	2		
5	A	1	Total	C	O	0	0
			4	2	2		
5	B	1	Total	C	O	0	0
			4	2	2		
5	B	1	Total	C	O	0	0
			4	2	2		
5	C	1	Total	C	O	0	0
			4	2	2		

*Continued on next page...*

*Continued from previous page...*

Mol	Chain	Residues	Atoms	ZeroOcc	AltConf
5	C	1	Total C O 4 2 2	0	0
5	D	1	Total C O 4 2 2	0	0
5	D	1	Total C O 4 2 2	0	0
5	D	1	Total C O 4 2 2	0	0
5	D	1	Total C O 4 2 2	0	0
5	D	1	Total C O 4 2 2	0	0
5	D	1	Total C O 4 2 2	0	0
5	D	1	Total C O 4 2 2	0	0
5	D	1	Total C O 4 2 2	0	0
5	D	1	Total C O 4 2 2	0	0
5	D	1	Total C O 4 2 2	0	0

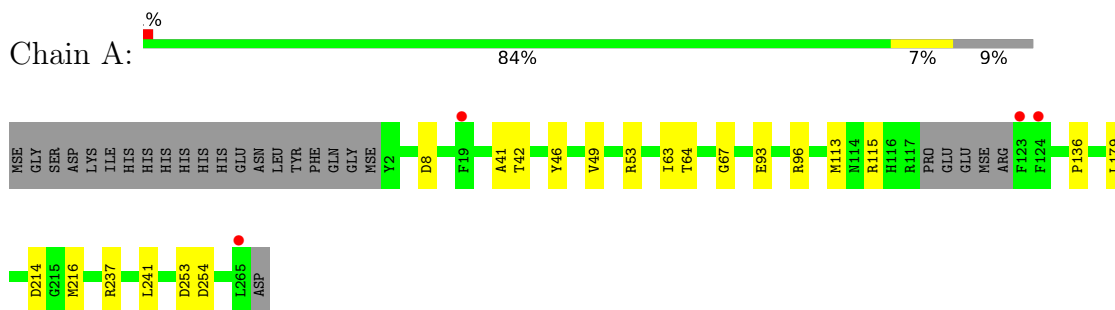
- Molecule 6 is water.

Mol	Chain	Residues	Atoms	ZeroOcc	AltConf
6	A	108	Total O 108 108	0	0
6	B	102	Total O 102 102	0	0
6	C	76	Total O 76 76	0	0
6	D	142	Total O 142 142	0	0

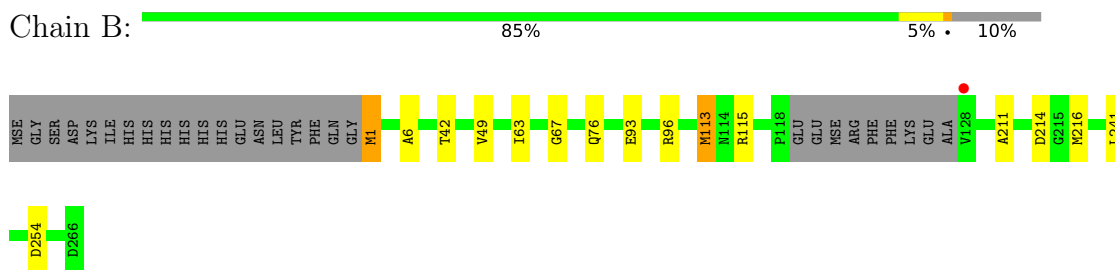
### 3 Residue-property plots [i](#)

These plots are drawn for all protein, RNA, DNA and oligosaccharide chains in the entry. The first graphic for a chain summarises the proportions of the various outlier classes displayed in the second graphic. The second graphic shows the sequence view annotated by issues in geometry and electron density. Residues are color-coded according to the number of geometric quality criteria for which they contain at least one outlier: green = 0, yellow = 1, orange = 2 and red = 3 or more. A red dot above a residue indicates a poor fit to the electron density ( $RSRZ > 2$ ). Stretches of 2 or more consecutive residues without any outlier are shown as a green connector. Residues present in the sample, but not in the model, are shown in grey.

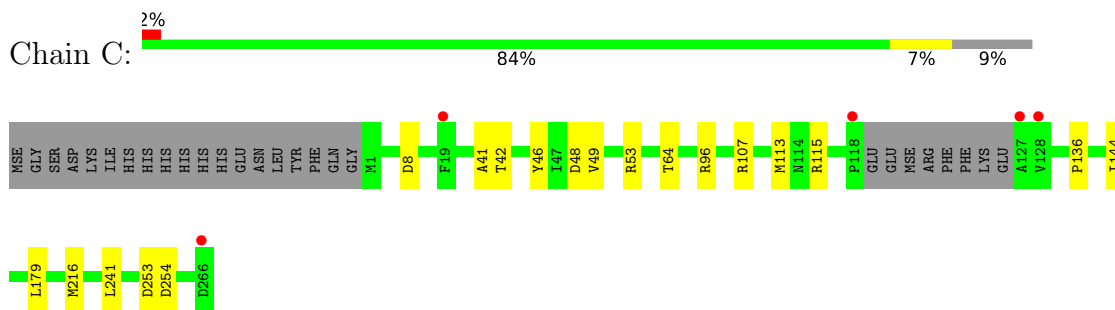
- Molecule 1: haloacid dehalogenase-like hydrolase



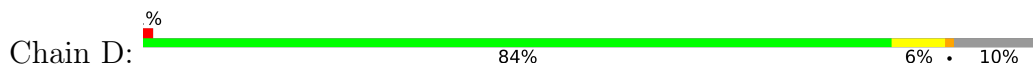
- Molecule 1: haloacid dehalogenase-like hydrolase



- Molecule 1: haloacid dehalogenase-like hydrolase



- Molecule 1: haloacid dehalogenase-like hydrolase





## 4 Data and refinement statistics i

Property	Value	Source
Space group	C 1 2 1	Depositor
Cell constants a, b, c, $\alpha$ , $\beta$ , $\gamma$	118.57Å 61.96Å 169.41Å 90.00° 94.19° 90.00°	Depositor
Resolution (Å)	46.78 – 2.39 46.78 – 2.39	Depositor EDS
% Data completeness (in resolution range)	(Not available) (46.78-2.39) 99.2 (46.78-2.39)	Depositor EDS
$R_{merge}$	0.12	Depositor
$R_{sym}$	(Not available)	Depositor
$\langle I/\sigma(I) \rangle$ <sup>1</sup>	2.20 (at 2.39Å)	Xtrriage
Refinement program	BUSTER-TNT BUSTER 2.8.0, BUSTER 2.8.0	Depositor
R, $R_{free}$	0.167 , 0.211 0.172 , 0.211	Depositor DCC
$R_{free}$ test set	2450 reflections (5.04%)	wwPDB-VP
Wilson B-factor (Å <sup>2</sup> )	31.7	Xtrriage
Anisotropy	0.853	Xtrriage
Bulk solvent $k_{sol}$ (e/Å <sup>3</sup> ), $B_{sol}$ (Å <sup>2</sup> )	0.35 , 57.0	EDS
L-test for twinning <sup>2</sup>	$\langle  L  \rangle = 0.48$ , $\langle L^2 \rangle = 0.31$	Xtrriage
Estimated twinning fraction	No twinning to report.	Xtrriage
$F_o, F_c$ correlation	0.96	EDS
Total number of atoms	8764	wwPDB-VP
Average B, all atoms (Å <sup>2</sup> )	43.0	wwPDB-VP

Xtrriage's analysis on translational NCS is as follows: *The largest off-origin peak in the Patterson function is 3.94% of the height of the origin peak. No significant pseudotranslation is detected.*

<sup>1</sup>Intensities estimated from amplitudes.

<sup>2</sup>Theoretical values of  $\langle |L| \rangle$ ,  $\langle L^2 \rangle$  for acentric reflections are 0.5, 0.333 respectively for untwinned datasets, and 0.375, 0.2 for perfectly twinned datasets.

## 5 Model quality [i](#)

### 5.1 Standard geometry [i](#)

Bond lengths and bond angles in the following residue types are not validated in this section: GOL, EDO, EPE, CA

The Z score for a bond length (or angle) is the number of standard deviations the observed value is removed from the expected value. A bond length (or angle) with  $|Z| > 5$  is considered an outlier worth inspection. RMSZ is the root-mean-square of all Z scores of the bond lengths (or angles).

Mol	Chain	Bond lengths		Bond angles	
		RMSZ	# Z  >5	RMSZ	# Z  >5
1	A	0.82	0/2108	0.84	0/2835
1	B	0.86	1/2093 (0.0%)	0.84	0/2814
1	C	0.86	0/2062	0.84	0/2775
1	D	0.85	1/2086 (0.0%)	0.85	0/2805
All	All	0.85	2/8349 (0.0%)	0.84	0/11229

All (2) bond length outliers are listed below:

Mol	Chain	Res	Type	Atoms	Z	Observed(Å)	Ideal(Å)
1	B	113	MSE	SE-CE	-6.60	1.75	1.95
1	D	113	MSE	SE-CE	-5.83	1.77	1.95

There are no bond angle outliers.

There are no chirality outliers.

There are no planarity outliers.

### 5.2 Too-close contacts [i](#)

In the following table, the Non-H and H(model) columns list the number of non-hydrogen atoms and hydrogen atoms in the chain respectively. The H(added) column lists the number of hydrogen atoms added and optimized by MolProbity. The Clashes column lists the number of clashes within the asymmetric unit, whereas Symm-Clashes lists symmetry-related clashes.

Mol	Chain	Non-H	H(model)	H(added)	Clashes	Symm-Clashes
1	A	2065	0	2007	14	0
1	B	2048	0	2002	11	0
1	C	2023	0	1962	10	0
1	D	2044	0	1995	15	0
2	A	1	0	0	0	0

*Continued on next page...*

Continued from previous page...

Mol	Chain	Non-H	H(model)	H(added)	Clashes	Symm-Clashes
2	B	1	0	0	0	0
2	C	1	0	0	0	0
2	D	1	0	0	0	0
3	A	13	0	13	0	0
3	B	15	0	18	1	0
3	C	14	0	15	0	0
3	D	14	0	15	0	0
4	A	6	0	7	2	0
4	B	6	0	7	1	0
4	C	6	0	7	0	0
4	D	6	0	7	0	0
5	A	20	0	30	1	0
5	B	8	0	12	0	0
5	C	8	0	12	0	0
5	D	36	0	54	5	0
6	A	108	0	0	0	0
6	B	102	0	0	0	0
6	C	76	0	0	0	0
6	D	142	0	0	0	0
All	All	8764	0	8163	47	0

The all-atom clashscore is defined as the number of clashes found per 1000 atoms (including hydrogen atoms). The all-atom clashscore for this structure is 3.

The worst 5 of 47 close contacts within the same asymmetric unit are listed below, sorted by their clash magnitude.

Atom-1	Atom-2	Interatomic distance (Å)	Clash overlap (Å)
1:D:72:ASP:HB2	5:D:284:EDO:H11	1.64	0.78
1:B:76[B]:GLN:HG3	1:D:85:ARG:HD3	1.71	0.73
1:A:214:ASP:OD2	4:A:272:GOL:H2	1.91	0.70
1:A:96:ARG:HD3	1:A:136:PRO:HG3	1.74	0.69
1:D:1:MSE:HA	1:D:1:MSE:HE2	1.78	0.66

There are no symmetry-related clashes.

## 5.3 Torsion angles [i](#)

### 5.3.1 Protein backbone [i](#)

In the following table, the Percentiles column shows the percent Ramachandran outliers of the chain as a percentile score with respect to all X-ray entries followed by that with respect to entries of similar resolution.

The Analysed column shows the number of residues for which the backbone conformation was analysed, and the total number of residues.

Mol	Chain	Analysed	Favoured	Allowed	Outliers	Percentiles	
1	A	258/285 (90%)	250 (97%)	8 (3%)	0	100	100
1	B	257/285 (90%)	249 (97%)	8 (3%)	0	100	100
1	C	256/285 (90%)	250 (98%)	6 (2%)	0	100	100
1	D	256/285 (90%)	248 (97%)	8 (3%)	0	100	100
All	All	1027/1140 (90%)	997 (97%)	30 (3%)	0	100	100

There are no Ramachandran outliers to report.

### 5.3.2 Protein sidechains [i](#)

In the following table, the Percentiles column shows the percent sidechain outliers of the chain as a percentile score with respect to all X-ray entries followed by that with respect to entries of similar resolution.

The Analysed column shows the number of residues for which the sidechain conformation was analysed, and the total number of residues.

Mol	Chain	Analysed	Rotameric	Outliers	Percentiles	
1	A	219/230 (95%)	218 (100%)	1 (0%)	81	91
1	B	220/230 (96%)	218 (99%)	2 (1%)	70	85
1	C	212/230 (92%)	210 (99%)	2 (1%)	70	85
1	D	217/230 (94%)	213 (98%)	4 (2%)	51	73
All	All	868/920 (94%)	859 (99%)	9 (1%)	70	84

5 of 9 residues with a non-rotameric sidechain are listed below:

Mol	Chain	Res	Type
1	D	115[B]	ARG
1	D	254	ASP
1	C	48	ASP

*Continued on next page...*

*Continued from previous page...*

Mol	Chain	Res	Type
1	C	254	ASP
1	D	1	MSE

Sometimes sidechains can be flipped to improve hydrogen bonding and reduce clashes. 5 of 11 such sidechains are listed below:

Mol	Chain	Res	Type
1	C	77	GLN
1	C	81	HIS
1	D	162	GLN
1	D	142	GLN
1	B	81	HIS

### 5.3.3 RNA [i](#)

There are no RNA molecules in this entry.

### 5.4 Non-standard residues in protein, DNA, RNA chains [i](#)

There are no non-standard protein/DNA/RNA residues in this entry.

### 5.5 Carbohydrates [i](#)

There are no oligosaccharides in this entry.

### 5.6 Ligand geometry [i](#)

Of 30 ligands modelled in this entry, 4 are monoatomic - leaving 26 for Mogul analysis.

In the following table, the Counts columns list the number of bonds (or angles) for which Mogul statistics could be retrieved, the number of bonds (or angles) that are observed in the model and the number of bonds (or angles) that are defined in the Chemical Component Dictionary. The Link column lists molecule types, if any, to which the group is linked. The Z score for a bond length (or angle) is the number of standard deviations the observed value is removed from the expected value. A bond length (or angle) with  $|Z| > 2$  is considered an outlier worth inspection. RMSZ is the root-mean-square of all Z scores of the bond lengths (or angles).

Mol	Type	Chain	Res	Link	Bond lengths			Bond angles		
					Counts	RMSZ	$\# Z  > 2$	Counts	RMSZ	$\# Z  > 2$
3	EPE	C	270	2	14,14,15	1.74	2 (14%)	18,19,20	1.71	4 (22%)

Mol	Type	Chain	Res	Link	Bond lengths			Bond angles		
					Counts	RMSZ	# Z  > 2	Counts	RMSZ	# Z  > 2
5	EDO	D	292	-	3,3,3	0.42	0	2,2,2	0.39	0
5	EDO	D	280	-	3,3,3	0.44	0	2,2,2	0.38	0
5	EDO	D	281	-	3,3,3	0.33	0	2,2,2	0.36	0
5	EDO	B	290	-	3,3,3	0.49	0	2,2,2	0.29	0
5	EDO	A	287	-	3,3,3	0.45	0	2,2,2	0.36	0
5	EDO	D	291	-	3,3,3	0.54	0	2,2,2	0.25	0
5	EDO	A	276	-	3,3,3	0.55	0	2,2,2	0.23	0
5	EDO	D	283	-	3,3,3	0.57	0	2,2,2	0.32	0
5	EDO	A	293	-	3,3,3	0.53	0	2,2,2	0.33	0
5	EDO	B	289	-	3,3,3	0.42	0	2,2,2	0.38	0
5	EDO	D	285	-	3,3,3	0.54	0	2,2,2	0.30	0
3	EPE	B	269	2	15,15,15	1.59	3 (20%)	19,20,20	1.72	4 (21%)
5	EDO	D	282	-	3,3,3	0.42	0	2,2,2	0.45	0
3	EPE	A	268	2	13,13,15	1.62	1 (7%)	17,18,20	2.05	6 (35%)
4	GOL	C	274	2	5,5,5	0.61	0	5,5,5	0.33	0
5	EDO	C	286	-	3,3,3	0.44	0	2,2,2	0.41	0
5	EDO	D	279	-	3,3,3	0.47	0	2,2,2	0.34	0
5	EDO	A	277	-	3,3,3	0.47	0	2,2,2	0.39	0
5	EDO	C	288	-	3,3,3	0.44	0	2,2,2	0.33	0
4	GOL	A	272	2	5,5,5	0.61	0	5,5,5	0.47	0
3	EPE	D	271	2	14,14,15	1.79	3 (21%)	18,19,20	1.81	5 (27%)
5	EDO	A	278	-	3,3,3	0.37	0	2,2,2	0.40	0
4	GOL	B	273	2	5,5,5	0.63	0	5,5,5	0.45	0
5	EDO	D	284	-	3,3,3	0.51	0	2,2,2	0.27	0
4	GOL	D	275	2	5,5,5	0.54	0	5,5,5	0.47	0

In the following table, the Chirals column lists the number of chiral outliers, the number of chiral centers analysed, the number of these observed in the model and the number defined in the Chemical Component Dictionary. Similar counts are reported in the Torsion and Rings columns. '-' means no outliers of that kind were identified.

Mol	Type	Chain	Res	Link	Chirals	Torsions	Rings
3	EPE	C	270	2	-	0/8/18/19	0/1/1/1
5	EDO	D	292	-	-	0/1/1/1	-
5	EDO	D	280	-	-	0/1/1/1	-
5	EDO	D	281	-	-	1/1/1/1	-
5	EDO	B	290	-	-	0/1/1/1	-
5	EDO	A	287	-	-	0/1/1/1	-
5	EDO	D	291	-	-	1/1/1/1	-
5	EDO	A	276	-	-	0/1/1/1	-
5	EDO	D	283	-	-	0/1/1/1	-
5	EDO	A	293	-	-	0/1/1/1	-

Continued on next page...

Continued from previous page...

Mol	Type	Chain	Res	Link	Chirals	Torsions	Rings
5	EDO	B	289	-	-	0/1/1/1	-
5	EDO	D	285	-	-	0/1/1/1	-
3	EPE	B	269	2	-	2/9/19/19	0/1/1/1
5	EDO	D	282	-	-	0/1/1/1	-
3	EPE	A	268	2	-	2/6/16/19	0/1/1/1
4	GOL	C	274	2	-	2/4/4/4	-
5	EDO	C	286	-	-	0/1/1/1	-
5	EDO	D	279	-	-	0/1/1/1	-
5	EDO	A	277	-	-	0/1/1/1	-
5	EDO	C	288	-	-	0/1/1/1	-
4	GOL	A	272	2	-	3/4/4/4	-
3	EPE	D	271	2	-	0/8/18/19	0/1/1/1
5	EDO	A	278	-	-	0/1/1/1	-
4	GOL	B	273	2	-	0/4/4/4	-
5	EDO	D	284	-	-	0/1/1/1	-
4	GOL	D	275	2	-	1/4/4/4	-

The worst 5 of 9 bond length outliers are listed below:

Mol	Chain	Res	Type	Atoms	Z	Observed(Å)	Ideal(Å)
3	D	271	EPE	C10-S	4.83	1.84	1.77
3	C	270	EPE	C10-S	4.28	1.83	1.77
3	A	268	EPE	C10-S	4.06	1.83	1.77
3	B	269	EPE	C10-S	3.56	1.82	1.77
3	C	270	EPE	C3-N4	2.24	1.52	1.46

The worst 5 of 19 bond angle outliers are listed below:

Mol	Chain	Res	Type	Atoms	Z	Observed(°)	Ideal(°)
3	D	271	EPE	O3S-S-O1S	-3.90	101.64	111.40
3	A	268	EPE	O2S-S-C10	3.76	112.42	106.73
3	C	270	EPE	O1S-S-C10	3.52	112.05	106.73
3	B	269	EPE	O3S-S-O1S	-3.49	102.66	111.40
3	B	269	EPE	O1S-S-C10	3.43	111.92	106.73

There are no chirality outliers.

5 of 12 torsion outliers are listed below:

Mol	Chain	Res	Type	Atoms
4	A	272	GOL	C1-C2-C3-O3
4	C	274	GOL	O1-C1-C2-C3

Continued on next page...

*Continued from previous page...*

Mol	Chain	Res	Type	Atoms
4	A	272	GOL	O2-C2-C3-O3
4	C	274	GOL	O1-C1-C2-O2
4	D	275	GOL	O1-C1-C2-C3

There are no ring outliers.

8 monomers are involved in 10 short contacts:

Mol	Chain	Res	Type	Clashes	Symm-Clashes
5	D	281	EDO	1	0
5	D	291	EDO	1	0
3	B	269	EPE	1	0
5	D	282	EDO	1	0
4	A	272	GOL	2	0
5	A	278	EDO	1	0
4	B	273	GOL	1	0
5	D	284	EDO	2	0

## 5.7 Other polymers [i](#)

There are no such residues in this entry.

## 5.8 Polymer linkage issues [i](#)

There are no chain breaks in this entry.

## 6 Fit of model and data [i](#)

### 6.1 Protein, DNA and RNA chains [i](#)

In the following table, the column labelled ‘#RSRZ > 2’ contains the number (and percentage) of RSRZ outliers, followed by percent RSRZ outliers for the chain as percentile scores relative to all X-ray entries and entries of similar resolution. The OWAB column contains the minimum, median, 95<sup>th</sup> percentile and maximum values of the occupancy-weighted average B-factor per residue. The column labelled ‘Q < 0.9’ lists the number of (and percentage) of residues with an average occupancy less than 0.9.

Mol	Chain	Analysed	<RSRZ>	#RSRZ>2	OWAB(Å <sup>2</sup> )	Q<0.9
1	A	250/285 (87%)	-0.26	4 (1%) 70 66	26, 39, 62, 85	3 (1%)
1	B	247/285 (86%)	-0.37	1 (0%) 88 86	24, 35, 58, 87	4 (1%)
1	C	248/285 (87%)	-0.10	5 (2%) 65 60	27, 46, 88, 110	2 (0%)
1	D	247/285 (86%)	-0.34	4 (1%) 70 66	23, 37, 58, 89	3 (1%)
All	All	992/1140 (87%)	-0.27	14 (1%) 73 69	23, 38, 70, 110	12 (1%)

The worst 5 of 14 RSRZ outliers are listed below:

Mol	Chain	Res	Type	RSRZ
1	B	128	VAL	4.1
1	C	127	ALA	3.7
1	C	118	PRO	3.5
1	C	128	VAL	3.5
1	D	128	VAL	3.3

### 6.2 Non-standard residues in protein, DNA, RNA chains [i](#)

There are no non-standard protein/DNA/RNA residues in this entry.

### 6.3 Carbohydrates [i](#)

There are no oligosaccharides in this entry.

### 6.4 Ligands [i](#)

In the following table, the Atoms column lists the number of modelled atoms in the group and the number defined in the chemical component dictionary. The B-factors column lists the minimum, median, 95<sup>th</sup> percentile and maximum values of B factors of atoms in the group. The column labelled ‘Q < 0.9’ lists the number of atoms with occupancy less than 0.9.

Mol	Type	Chain	Res	Atoms	RSCC	RSR	B-factors( $\text{\AA}^2$ )	Q<0.9
5	EDO	A	293	4/4	0.73	0.19	65,66,66,70	0
5	EDO	A	287	4/4	0.80	0.15	58,58,59,69	0
5	EDO	C	288	4/4	0.80	0.17	66,68,69,70	0
5	EDO	C	286	4/4	0.82	0.15	55,57,58,62	0
5	EDO	B	290	4/4	0.83	0.14	65,67,68,71	0
5	EDO	D	291	4/4	0.85	0.14	59,59,60,66	0
5	EDO	A	276	4/4	0.86	0.14	51,51,52,53	0
5	EDO	A	277	4/4	0.86	0.18	56,57,58,61	0
5	EDO	D	284	4/4	0.87	0.14	58,60,63,64	0
5	EDO	D	283	4/4	0.88	0.12	53,53,56,58	0
5	EDO	D	285	4/4	0.90	0.17	58,60,60,61	0
5	EDO	D	280	4/4	0.90	0.10	51,51,51,55	0
5	EDO	D	292	4/4	0.91	0.16	58,59,62,65	0
5	EDO	D	282	4/4	0.92	0.17	43,45,49,59	0
5	EDO	D	279	4/4	0.93	0.08	53,54,55,56	0
3	EPE	C	270	14/15	0.93	0.13	49,55,57,57	0
3	EPE	D	271	14/15	0.93	0.12	48,54,56,56	0
3	EPE	B	269	15/15	0.93	0.12	55,59,62,65	0
5	EDO	A	278	4/4	0.94	0.13	48,50,52,53	0
4	GOL	D	275	6/6	0.94	0.11	34,36,36,37	0
4	GOL	A	272	6/6	0.94	0.09	39,42,42,43	0
5	EDO	B	289	4/4	0.94	0.09	41,43,45,56	0
4	GOL	B	273	6/6	0.94	0.11	47,48,48,49	0
4	GOL	C	274	6/6	0.95	0.09	49,51,52,53	0
5	EDO	D	281	4/4	0.95	0.08	37,37,39,50	0
3	EPE	A	268	13/15	0.96	0.10	48,52,53,54	0
2	CA	A	267	1/1	0.99	0.03	37,37,37,37	0
2	CA	C	267	1/1	0.99	0.05	46,46,46,46	0
2	CA	B	267	1/1	1.00	0.06	41,41,41,41	0
2	CA	D	267	1/1	1.00	0.03	36,36,36,36	0

## 6.5 Other polymers [\(i\)](#)

There are no such residues in this entry.