



Full wwPDB X-ray Structure Validation Report ⓘ

Mar 6, 2026 – 03:56 PM UTC

PDB ID : 2PG2 / pdb_00002pg2
Title : Crystal structure of KSP in complex with ADP and thiophene containing inhibitor 15
Authors : Lee, T.T.
Deposited on : 2007-04-06
Resolution : 1.85 Å(reported)

This is a Full wwPDB X-ray Structure Validation Report for a publicly released PDB entry.

We welcome your comments at validation@mail.wwpdb.org

A user guide is available at

<https://www.wwpdb.org/validation/2017/XrayValidationReportHelp>

with specific help available everywhere you see the ⓘ symbol.

The types of validation reports are described at

<http://www.wwpdb.org/validation/2017/FAQs#types>.

The following versions of software and data (see [references ⓘ](#)) were used in the production of this report:

MolProbity	:	4-5-2 with Phenix2.0
Mogul	:	2022.3.0, CSD as543be (2022)
Xtriage (Phenix)	:	2.0
EDS	:	3.0
Buster-report	:	wwPDB partial adaption of 1.1.7 (2018)
Percentile statistics	:	20250101.v01 (using entries in the PDB archive January 1st 2025)
CCP4	:	9.0.010 (Gargrove)
Density-Fitness	:	1.0.12
Ideal geometry (proteins)	:	Engh & Huber (2001)
Ideal geometry (DNA, RNA)	:	Parkinson et al. (1996)
Validation Pipeline (wwPDB-VP)	:	2.49

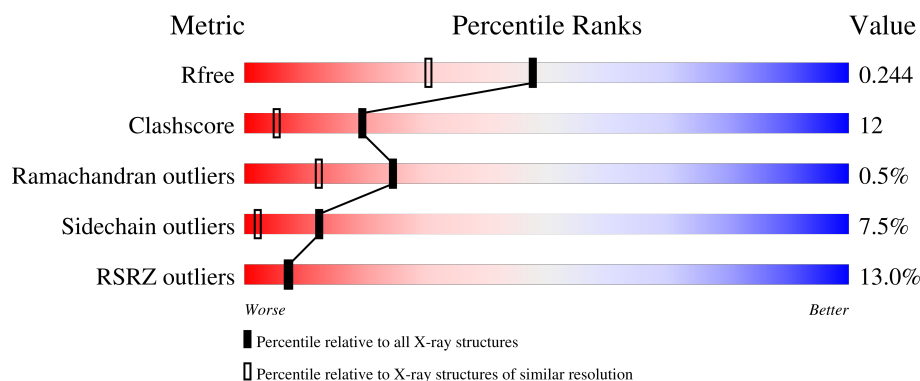
1 Overall quality at a glance

The following experimental techniques were used to determine the structure:

X-RAY DIFFRACTION

The reported resolution of this entry is 1.85 Å.

Percentile scores (ranging between 0-100) for global validation metrics of the entry are shown in the following graphic. The table shows the number of entries on which the scores are based.



Metric	Whole archive (#Entries)	Similar resolution (#Entries, resolution range(Å))
R_{free}	180053	1296 (1.84-1.84)
Clashscore	190562	1329 (1.84-1.84)
Ramachandran outliers	187476	1318 (1.84-1.84)
Sidechain outliers	187428	1318 (1.84-1.84)
RSRZ outliers	180081	1296 (1.84-1.84)

The table below summarises the geometric issues observed across the polymeric chains and their fit to the electron density. The red, orange, yellow and green segments of the lower bar indicate the fraction of residues that contain outliers for ≥ 3 , 2, 1 and 0 types of geometric quality criteria respectively. A grey segment represents the fraction of residues that are not modelled. The numeric value for each fraction is indicated below the corresponding segment, with a dot representing fractions $\leq 5\%$. The upper red bar (where present) indicates the fraction of residues that have poor fit to the electron density. The numeric value is given above the bar.

Mol	Chain	Length	Quality of chain
1	A	368	<div> <div>12%</div> <div> <div></div> <div>70%</div> <div>18%</div> <div>•• 10%</div> </div> </div>
1	B	368	<div> <div>12%</div> <div> <div></div> <div>72%</div> <div>16%</div> <div>• 10%</div> </div> </div>

The following table lists non-polymeric compounds, carbohydrate monomers and non-standard residues in protein, DNA, RNA chains that are outliers for geometric or electron-density-fit criteria:

Mol	Type	Chain	Res	Chirality	Geometry	Clashes	Electron density
4	K01	A	604	-	-	X	-

2 Entry composition [i](#)

There are 5 unique types of molecules in this entry. The entry contains 5776 atoms, of which 0 are hydrogens and 0 are deuteriums.

In the tables below, the ZeroOcc column contains the number of atoms modelled with zero occupancy, the AltConf column contains the number of residues with at least one atom in alternate conformation and the Trace column contains the number of residues modelled with at most 2 atoms.

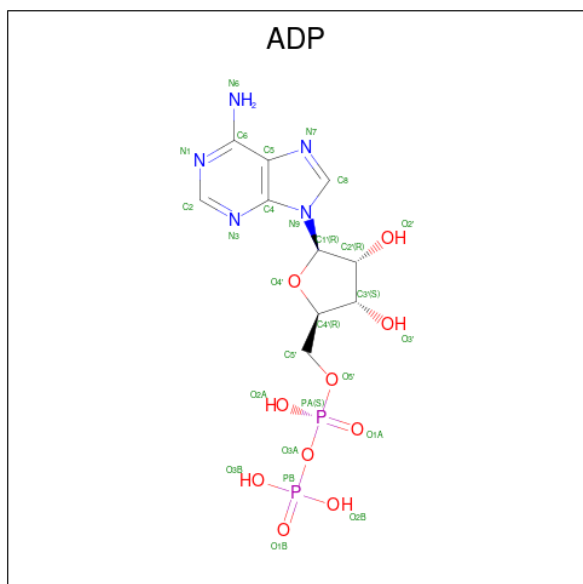
- Molecule 1 is a protein called Kinesin-like protein KIF11.

Mol	Chain	Residues	Atoms					ZeroOcc	AltConf	Trace
1	A	331	Total	C	N	O	S	0	0	0
			2599	1628	453	508	10			
1	B	331	Total	C	N	O	S	0	0	0
			2599	1628	453	508	10			

- Molecule 2 is MAGNESIUM ION (CCD ID: MG) (formula: Mg).

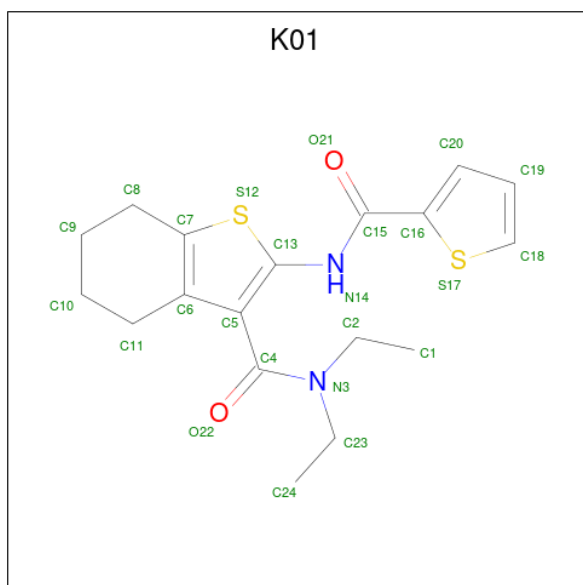
Mol	Chain	Residues	Atoms		ZeroOcc	AltConf
2	A	1	Total	Mg	0	0
			1	1		
2	B	1	Total	Mg	0	0
			1	1		

- Molecule 3 is ADENOSINE-5'-DIPHOSPHATE (CCD ID: ADP) (formula: C₁₀H₁₅N₅O₁₀P₂).



Mol	Chain	Residues	Atoms					ZeroOcc	AltConf
3	A	1	Total	C	N	O	P	0	0
			27	10	5	10	2		
3	B	1	Total	C	N	O	P	0	0
			27	10	5	10	2		

- Molecule 4 is N,N-DIETHYL-2-[(2-THIENYLCARBONYL)AMINO]-4,5,6,7-TETRAHYDR O-1-BENZOTHIOPHENE-3-CARBOXAMIDE (CCD ID: K01) (formula: C₁₈H₂₂N₂O₂S₂).



Mol	Chain	Residues	Atoms					ZeroOcc	AltConf
4	A	1	Total	C	N	O	S	0	0
			24	18	2	2	2		
4	B	1	Total	C	N	O	S	0	0
			24	18	2	2	2		

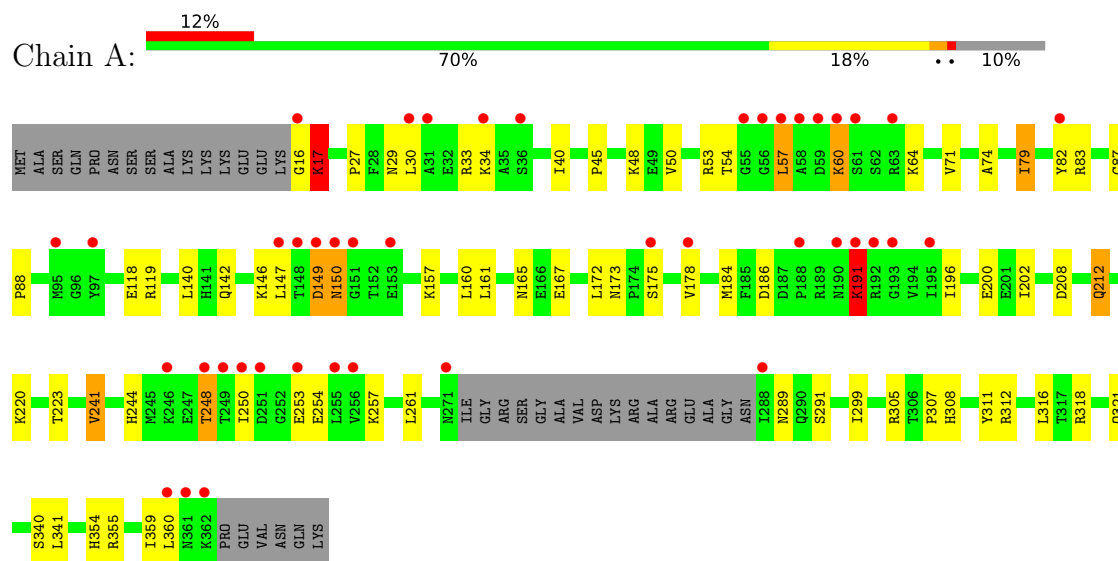
- Molecule 5 is water.

Mol	Chain	Residues	Atoms		ZeroOcc	AltConf
5	A	247	Total	O	0	0
			247	247		
5	B	227	Total	O	0	0
			227	227		

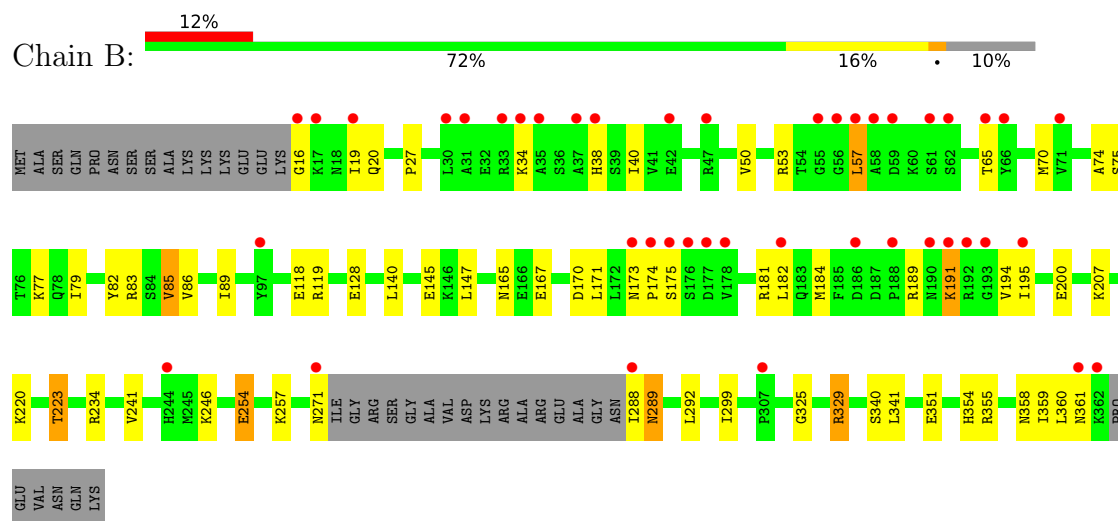
3 Residue-property plots

These plots are drawn for all protein, RNA, DNA and oligosaccharide chains in the entry. The first graphic for a chain summarises the proportions of the various outlier classes displayed in the second graphic. The second graphic shows the sequence view annotated by issues in geometry and electron density. Residues are color-coded according to the number of geometric quality criteria for which they contain at least one outlier: green = 0, yellow = 1, orange = 2 and red = 3 or more. A red dot above a residue indicates a poor fit to the electron density ($RSRZ > 2$). Stretches of 2 or more consecutive residues without any outlier are shown as a green connector. Residues present in the sample, but not in the model, are shown in grey.

• Molecule 1: Kinesin-like protein KIF11



• Molecule 1: Kinesin-like protein KIF11



4 Data and refinement statistics

Property	Value	Source
Space group	C 1 2 1	Depositor
Cell constants a, b, c, α , β , γ	161.06Å 80.35Å 69.31Å 90.00° 96.83° 90.00°	Depositor
Resolution (Å)	80.06 – 1.85 79.96 – 1.85	Depositor EDS
% Data completeness (in resolution range)	99.5 (80.06-1.85) 99.5 (79.96-1.85)	Depositor EDS
R_{merge}	(Not available)	Depositor
R_{sym}	(Not available)	Depositor
$\langle I/\sigma(I) \rangle$ ¹	1.97 (at 1.85Å)	Xtriage
Refinement program	REFMAC 5.2	Depositor
R, R_{free}	0.210 , 0.248 0.206 , 0.244	Depositor DCC
R_{free} test set	3760 reflections (5.01%)	wwPDB-VP
Wilson B-factor (Å ²)	26.5	Xtriage
Anisotropy	0.079	Xtriage
Bulk solvent k_{sol} (e/Å ³), B_{sol} (Å ²)	0.35 , 39.9	EDS
L-test for twinning ²	$\langle L \rangle = 0.48$, $\langle L^2 \rangle = 0.32$	Xtriage
Estimated twinning fraction	No twinning to report.	Xtriage
F_o, F_c correlation	0.95	EDS
Total number of atoms	5776	wwPDB-VP
Average B, all atoms (Å ²)	30.0	wwPDB-VP

Xtriage's analysis on translational NCS is as follows: *The largest off-origin peak in the Patterson function is 6.49% of the height of the origin peak. No significant pseudotranslation is detected.*

¹Intensities estimated from amplitudes.

²Theoretical values of $\langle |L| \rangle$, $\langle L^2 \rangle$ for acentric reflections are 0.5, 0.333 respectively for untwinned datasets, and 0.375, 0.2 for perfectly twinned datasets.

5 Model quality [i](#)

5.1 Standard geometry [i](#)

Bond lengths and bond angles in the following residue types are not validated in this section: K01, MG, ADP

The Z score for a bond length (or angle) is the number of standard deviations the observed value is removed from the expected value. A bond length (or angle) with $|Z| > 5$ is considered an outlier worth inspection. RMSZ is the root-mean-square of all Z scores of the bond lengths (or angles).

Mol	Chain	Bond lengths		Bond angles	
		RMSZ	$\# Z > 5$	RMSZ	$\# Z > 5$
1	A	0.89	0/2637	0.99	2/3564 (0.1%)
1	B	0.84	1/2637 (0.0%)	0.94	0/3564
All	All	0.86	1/5274 (0.0%)	0.97	2/7128 (0.0%)

All (1) bond length outliers are listed below:

Mol	Chain	Res	Type	Atoms	Z	Observed(Å)	Ideal(Å)
1	B	85	VAL	CA-CB	5.21	1.60	1.54

All (2) bond angle outliers are listed below:

Mol	Chain	Res	Type	Atoms	Z	Observed(°)	Ideal(°)
1	A	57	LEU	N-CA-C	6.00	119.30	110.59
1	A	191	LYS	N-CA-C	5.75	117.22	111.07

There are no chirality outliers.

There are no planarity outliers.

5.2 Too-close contacts [i](#)

In the following table, the Non-H and H(model) columns list the number of non-hydrogen atoms and hydrogen atoms in the chain respectively. The H(added) column lists the number of hydrogen atoms added and optimized by MolProbity. The Clashes column lists the number of clashes within the asymmetric unit, whereas Symm-Clashes lists symmetry-related clashes.

Mol	Chain	Non-H	H(model)	H(added)	Clashes	Symm-Clashes
1	A	2599	0	2627	55	0
1	B	2599	0	2627	52	0
2	A	1	0	0	0	0

Continued on next page...

Continued from previous page...

Mol	Chain	Non-H	H(model)	H(added)	Clashes	Symm-Clashes
2	B	1	0	0	0	0
3	A	27	0	12	0	0
3	B	27	0	12	0	0
4	A	24	0	21	14	0
4	B	24	0	21	6	0
5	A	247	0	0	17	0
5	B	227	0	0	10	0
All	All	5776	0	5320	123	0

The all-atom clashscore is defined as the number of clashes found per 1000 atoms (including hydrogen atoms). The all-atom clashscore for this structure is 12.

All (123) close contacts within the same asymmetric unit are listed below, sorted by their clash magnitude.

Atom-1	Atom-2	Interatomic distance (Å)	Clash overlap (Å)
4:A:604:K01:C1	4:A:604:K01:C2	1.75	1.54
4:B:604:K01:N14	4:B:604:K01:H21	1.54	1.20
4:A:604:K01:H21	4:A:604:K01:N14	1.57	1.20
1:A:82:TYR:OH	1:A:142:GLN:HG3	1.49	1.11
1:B:184:MET:HE2	1:B:194:VAL:HG11	1.29	1.11
1:B:329:ARG:HG2	1:B:329:ARG:HH11	1.00	1.06
4:A:604:K01:C1	4:A:604:K01:N3	2.20	1.03
1:B:329:ARG:HH11	1:B:329:ARG:CG	1.84	0.90
1:A:16:GLY:O	1:A:17:LYS:HB2	1.69	0.90
1:B:329:ARG:HG2	1:B:329:ARG:NH1	1.79	0.90
1:B:184:MET:CE	1:B:194:VAL:HG11	2.02	0.89
4:B:604:K01:H21	4:B:604:K01:C13	1.88	0.87
1:B:223:THR:HG21	5:B:698:HOH:O	1.81	0.81
1:B:173:ASN:O	1:B:220:LYS:HE3	1.81	0.81
4:B:604:K01:N14	4:B:604:K01:C2	2.44	0.79
4:A:604:K01:H21	4:A:604:K01:C13	1.95	0.78
1:B:200:GLU:HG2	5:B:769:HOH:O	1.82	0.78
1:A:186:ASP:OD1	1:A:312:ARG:NH2	2.22	0.72
1:A:82:TYR:HH	1:A:142:GLN:HG3	1.54	0.71
1:A:299:ILE:HG23	1:A:359:ILE:HD11	1.72	0.71
1:A:223:THR:HG21	5:A:678:HOH:O	1.91	0.70
1:A:57:LEU:HB2	1:A:60:LYS:O	1.92	0.69
1:B:167:GLU:HG2	5:B:699:HOH:O	1.92	0.69
1:B:223:THR:CG2	5:B:698:HOH:O	2.40	0.68
1:A:118:GLU:O	4:A:604:K01:H19	1.94	0.67
1:A:87:CYS:SG	5:A:844:HOH:O	2.53	0.67

Continued on next page...

Continued from previous page...

Atom-1	Atom-2	Interatomic distance (Å)	Clash overlap (Å)
4:A:604:K01:O22	4:A:604:K01:C11	2.41	0.67
4:A:604:K01:C1	4:A:604:K01:C4	2.73	0.66
1:A:79:ILE:HD13	1:A:83:ARG:HD3	1.80	0.64
1:A:308:HIS:HE1	5:A:623:HOH:O	1.81	0.63
1:A:307:PRO:HG2	5:A:741:HOH:O	1.98	0.63
4:A:604:K01:C2	4:A:604:K01:N14	2.50	0.63
1:A:354:HIS:HD2	5:A:850:HOH:O	1.84	0.61
1:A:142:GLN:HB3	5:A:819:HOH:O	2.02	0.60
1:A:223:THR:HG22	5:A:691:HOH:O	2.01	0.60
1:A:167:GLU:HG2	5:A:782:HOH:O	2.03	0.59
1:A:248:THR:HG23	5:A:765:HOH:O	2.02	0.59
1:A:53:ARG:HD3	1:A:57:LEU:O	2.03	0.59
1:A:142:GLN:HG2	5:A:717:HOH:O	2.02	0.58
4:A:604:K01:O22	4:A:604:K01:H111	2.03	0.58
1:B:173:ASN:HD22	1:B:174:PRO:N	2.01	0.58
1:B:79:ILE:HG13	1:B:83:ARG:HD3	1.85	0.58
1:B:173:ASN:HD22	1:B:173:ASN:C	2.11	0.58
1:A:161:LEU:HD22	1:A:196:ILE:HD13	1.85	0.57
1:A:79:ILE:CD1	1:A:83:ARG:HD3	2.34	0.57
1:B:65:THR:HG21	5:B:826:HOH:O	2.04	0.56
1:A:45:PRO:HA	1:A:71:VAL:HG13	1.87	0.56
1:A:212:GLN:HG3	5:A:827:HOH:O	2.04	0.56
1:A:48:LYS:HA	1:A:71:VAL:HG12	1.87	0.55
1:B:246:LYS:HE3	1:B:254:GLU:OE2	2.07	0.55
1:A:360:LEU:HD12	5:A:699:HOH:O	2.06	0.55
1:A:173:ASN:C	1:A:173:ASN:HD22	2.15	0.54
1:B:118:GLU:O	4:B:604:K01:H19	2.08	0.53
1:B:75:SER:O	1:B:77:LYS:HE2	2.09	0.52
1:A:244:HIS:HD2	5:A:684:HOH:O	1.91	0.52
1:B:184:MET:HE3	1:B:194:VAL:HG21	1.92	0.52
1:B:173:ASN:HD22	1:B:174:PRO:CD	2.22	0.52
1:A:311:TYR:CD1	1:A:321:GLN:HG3	2.45	0.52
4:A:604:K01:H21	4:A:604:K01:C15	2.34	0.52
1:B:329:ARG:HD3	5:B:780:HOH:O	2.08	0.52
1:A:45:PRO:HA	1:A:71:VAL:CG1	2.40	0.51
1:B:173:ASN:HD22	1:B:174:PRO:HD2	1.77	0.50
4:A:604:K01:C1	4:A:604:K01:C23	2.90	0.50
1:A:184:MET:HE2	1:A:318:ARG:CZ	2.42	0.50
1:A:79:ILE:CD1	1:A:83:ARG:CD	2.90	0.49
1:A:355:ARG:NH2	5:A:711:HOH:O	2.45	0.49
1:A:87:CYS:HB2	1:A:88:PRO:HD3	1.94	0.48

Continued on next page...

Continued from previous page...

Atom-1	Atom-2	Interatomic distance (Å)	Clash overlap (Å)
1:A:149:ASP:CG	1:A:150:ASN:N	2.71	0.48
1:A:149:ASP:O	1:A:150:ASN:O	2.32	0.48
1:B:38:HIS:CD2	1:B:53:ARG:HH12	2.31	0.48
1:B:246:LYS:HG2	1:B:254:GLU:HG2	1.94	0.48
1:A:241:VAL:HG13	1:A:261:LEU:HB3	1.96	0.47
1:B:234:ARG:NH1	5:B:774:HOH:O	2.34	0.47
1:B:38:HIS:HB3	5:B:751:HOH:O	2.14	0.47
1:A:173:ASN:ND2	1:A:175:SER:H	2.13	0.47
1:A:248:THR:HA	1:A:253:GLU:O	2.15	0.47
1:A:184:MET:HE1	1:A:318:ARG:HB2	1.98	0.46
1:B:20:GLN:NE2	1:B:70:MET:HE3	2.31	0.46
1:A:160:LEU:HB3	1:A:172:LEU:HG	1.98	0.46
4:B:604:K01:H242	4:B:604:K01:H22	1.35	0.46
1:A:321:GLN:NE2	5:A:703:HOH:O	2.46	0.46
1:B:191:LYS:HE2	1:B:191:LYS:HA	1.98	0.46
1:A:82:TYR:CZ	1:A:142:GLN:HG3	2.46	0.45
1:B:173:ASN:ND2	1:B:175:SER:H	2.14	0.45
1:B:171:LEU:HD13	1:B:220:LYS:HB3	1.98	0.45
1:A:191:LYS:HD2	5:A:763:HOH:O	2.16	0.45
1:A:178:VAL:CG1	1:A:220:LYS:HB3	2.47	0.44
1:A:157:LYS:HE3	1:A:157:LYS:HB2	1.72	0.44
1:A:29:ASN:O	1:A:33:ARG:HG3	2.17	0.43
1:A:40:ILE:HD13	1:A:340:SER:HA	1.99	0.43
1:B:170:ASP:HB2	1:B:182:LEU:HD11	2.00	0.43
1:B:38:HIS:O	1:B:38:HIS:CG	2.70	0.43
1:A:291:SER:HB3	1:A:316:LEU:CB	2.49	0.43
1:B:167:GLU:OE1	1:B:181:ARG:NE	2.49	0.43
1:B:354:HIS:HD2	5:B:803:HOH:O	2.00	0.43
1:A:54:THR:HG21	1:A:64:LYS:HG3	1.99	0.43
1:B:289:ASN:ND2	1:B:292:LEU:H	2.17	0.43
1:B:173:ASN:C	1:B:173:ASN:ND2	2.77	0.43
1:B:119:ARG:HD2	4:B:604:K01:C19	2.49	0.43
1:B:189:ARG:HH21	1:B:195:ILE:HD11	1.83	0.42
4:A:604:K01:H22	4:A:604:K01:H242	1.30	0.42
1:B:38:HIS:HD2	1:B:53:ARG:HH22	1.66	0.42
1:B:189:ARG:NH2	1:B:195:ILE:HD11	2.35	0.42
1:B:299:ILE:HG23	1:B:359:ILE:HD11	2.02	0.42
1:A:119:ARG:HD2	4:A:604:K01:C19	2.49	0.42
1:A:178:VAL:HG13	1:A:220:LYS:HE2	2.01	0.42
1:B:167:GLU:CD	1:B:181:ARG:HE	2.27	0.42
1:B:325:GLY:H	1:B:361:ASN:HD21	1.67	0.42

Continued on next page...

Continued from previous page...

Atom-1	Atom-2	Interatomic distance (Å)	Clash overlap (Å)
1:A:149:ASP:OD1	1:A:149:ASP:C	2.63	0.42
1:A:149:ASP:OD1	1:A:150:ASN:N	2.54	0.41
1:B:27:PRO:HA	1:B:74:ALA:HB1	2.03	0.41
1:B:173:ASN:ND2	1:B:174:PRO:HD2	2.35	0.41
1:A:17:LYS:HD3	5:A:625:HOH:O	2.21	0.41
1:B:16:GLY:HA2	1:B:360:LEU:HB3	2.03	0.41
1:B:57:LEU:HD23	1:B:57:LEU:N	2.36	0.41
1:B:89:ILE:HG12	1:B:329:ARG:HH12	1.86	0.41
1:B:351:GLU:O	1:B:355:ARG:HG3	2.21	0.41
1:B:82:TYR:CD2	1:B:86:VAL:HB	2.56	0.41
1:B:40:ILE:HD13	1:B:340:SER:HA	2.02	0.40
1:A:27:PRO:HA	1:A:74:ALA:HB1	2.04	0.40
4:A:604:K01:C4	4:A:604:K01:H13	2.51	0.40
1:B:38:HIS:CE1	5:B:745:HOH:O	2.74	0.40
1:B:358:ASN:N	1:B:358:ASN:HD22	2.19	0.40

There are no symmetry-related clashes.

5.3 Torsion angles

5.3.1 Protein backbone

In the following table, the Percentiles column shows the percent Ramachandran outliers of the chain as a percentile score with respect to all X-ray entries followed by that with respect to entries of similar resolution.

The Analysed column shows the number of residues for which the backbone conformation was analysed, and the total number of residues.

Mol	Chain	Analysed	Favoured	Allowed	Outliers	Percentiles	
1	A	327/368 (89%)	321 (98%)	3 (1%)	3 (1%)	14	4
1	B	327/368 (89%)	323 (99%)	4 (1%)	0	100	100
All	All	654/736 (89%)	644 (98%)	7 (1%)	3 (0%)	24	12

All (3) Ramachandran outliers are listed below:

Mol	Chain	Res	Type
1	A	17	LYS
1	A	149	ASP
1	A	150	ASN

5.3.2 Protein sidechains ⓘ

In the following table, the Percentiles column shows the percent sidechain outliers of the chain as a percentile score with respect to all X-ray entries followed by that with respect to entries of similar resolution.

The Analysed column shows the number of residues for which the sidechain conformation was analysed, and the total number of residues.

Mol	Chain	Analysed	Rotameric	Outliers	Percentiles	
1	A	293/322 (91%)	270 (92%)	23 (8%)	11	2
1	B	293/322 (91%)	272 (93%)	21 (7%)	13	2
All	All	586/644 (91%)	542 (92%)	44 (8%)	12	2

All (44) residues with a non-rotameric sidechain are listed below:

Mol	Chain	Res	Type
1	A	17	LYS
1	A	30	LEU
1	A	34	LYS
1	A	50	VAL
1	A	60	LYS
1	A	79	ILE
1	A	140	LEU
1	A	146	LYS
1	A	147	LEU
1	A	165	ASN
1	A	191	LYS
1	A	200	GLU
1	A	202	ILE
1	A	208	ASP
1	A	212	GLN
1	A	241	VAL
1	A	248	THR
1	A	250	ILE
1	A	254	GLU
1	A	257	LYS
1	A	289	ASN
1	A	305	ARG
1	A	341	LEU
1	B	19	ILE
1	B	34	LYS
1	B	50	VAL
1	B	57	LEU

Continued on next page...

Continued from previous page...

Mol	Chain	Res	Type
1	B	85	VAL
1	B	128	GLU
1	B	140	LEU
1	B	145	GLU
1	B	147	LEU
1	B	165	ASN
1	B	191	LYS
1	B	207	LYS
1	B	223	THR
1	B	241	VAL
1	B	254	GLU
1	B	257	LYS
1	B	271	ASN
1	B	288	ILE
1	B	289	ASN
1	B	329	ARG
1	B	341	LEU

Sometimes sidechains can be flipped to improve hydrogen bonding and reduce clashes. All (24) such sidechains are listed below:

Mol	Chain	Res	Type
1	A	18	ASN
1	A	98	ASN
1	A	173	ASN
1	A	183	GLN
1	A	244	HIS
1	A	262	ASN
1	A	271	ASN
1	A	289	ASN
1	A	308	HIS
1	A	321	GLN
1	A	354	HIS
1	A	361	ASN
1	B	20	GLN
1	B	38	HIS
1	B	173	ASN
1	B	212	GLN
1	B	244	HIS
1	B	262	ASN
1	B	271	ASN
1	B	289	ASN
1	B	308	HIS

Continued on next page...

Continued from previous page...

Mol	Chain	Res	Type
1	B	342	ASN
1	B	358	ASN
1	B	361	ASN

5.3.3 RNA [i](#)

There are no RNA molecules in this entry.

5.4 Non-standard residues in protein, DNA, RNA chains [i](#)

There are no non-standard protein/DNA/RNA residues in this entry.

5.5 Carbohydrates [i](#)

There are no oligosaccharides in this entry.

5.6 Ligand geometry [i](#)

Of 6 ligands modelled in this entry, 2 are monoatomic - leaving 4 for Mogul analysis.

In the following table, the Counts columns list the number of bonds (or angles) for which Mogul statistics could be retrieved, the number of bonds (or angles) that are observed in the model and the number of bonds (or angles) that are defined in the Chemical Component Dictionary. The Link column lists molecule types, if any, to which the group is linked. The Z score for a bond length (or angle) is the number of standard deviations the observed value is removed from the expected value. A bond length (or angle) with $|Z| > 2$ is considered an outlier worth inspection. RMSZ is the root-mean-square of all Z scores of the bond lengths (or angles).

Mol	Type	Chain	Res	Link	Bond lengths			Bond angles		
					Counts	RMSZ	# Z > 2	Counts	RMSZ	# Z > 2
3	ADP	A	601	2	28,29,29	1.51	4 (14%)	43,45,45	1.86	11 (25%)
3	ADP	B	601	2	28,29,29	1.48	4 (14%)	43,45,45	1.75	10 (23%)
4	K01	A	604	-	26,26,26	2.18	7 (26%)	35,36,36	4.55	17 (48%)
4	K01	B	604	-	26,26,26	2.14	7 (26%)	35,36,36	4.69	11 (31%)

In the following table, the Chirals column lists the number of chiral outliers, the number of chiral centers analysed, the number of these observed in the model and the number defined in the Chemical Component Dictionary. Similar counts are reported in the Torsion and Rings columns. '-' means no outliers of that kind were identified.

Mol	Type	Chain	Res	Link	Chirals	Torsions	Rings
3	ADP	A	601	2	-	0/16/32/32	0/3/3/3
3	ADP	B	601	2	-	0/16/32/32	0/3/3/3
4	K01	A	604	-	-	6/20/27/27	0/3/3/3
4	K01	B	604	-	-	6/20/27/27	0/3/3/3

All (22) bond length outliers are listed below:

Mol	Chain	Res	Type	Atoms	Z	Observed(Å)	Ideal(Å)
4	A	604	K01	C15-N14	-5.10	1.27	1.37
4	B	604	K01	C2-N3	-4.67	1.31	1.48
4	A	604	K01	C1-C2	4.66	1.75	1.50
4	A	604	K01	C2-N3	-4.49	1.31	1.48
4	B	604	K01	C15-N14	-4.49	1.28	1.37
3	A	601	ADP	C5-C4	4.46	1.47	1.39
4	B	604	K01	O22-C4	-4.40	1.14	1.23
4	B	604	K01	C1-C2	4.15	1.72	1.50
4	A	604	K01	O22-C4	-3.98	1.15	1.23
3	B	601	ADP	C5-C4	3.86	1.46	1.39
3	B	601	ADP	C5-C6	3.18	1.49	1.41
4	B	604	K01	O21-C15	-3.17	1.17	1.23
3	A	601	ADP	C5-C6	3.15	1.49	1.41
4	B	604	K01	C7-C6	3.14	1.39	1.36
4	A	604	K01	C7-C6	2.98	1.39	1.36
4	A	604	K01	C4-N3	-2.92	1.29	1.34
3	A	601	ADP	PB-O3B	-2.79	1.44	1.54
3	B	601	ADP	PA-O3A	2.52	1.62	1.59
3	A	601	ADP	C8-N7	2.42	1.36	1.31
4	A	604	K01	O21-C15	-2.23	1.19	1.23
4	B	604	K01	C4-N3	-2.06	1.30	1.34
3	B	601	ADP	C8-N7	2.03	1.35	1.31

All (49) bond angle outliers are listed below:

Mol	Chain	Res	Type	Atoms	Z	Observed(°)	Ideal(°)
4	B	604	K01	O22-C4-N3	-15.99	97.38	122.67
4	B	604	K01	C5-C4-N3	14.56	137.88	118.24
4	A	604	K01	C5-C4-N3	14.20	137.39	118.24
4	A	604	K01	O22-C4-N3	-12.37	103.11	122.67
4	A	604	K01	C23-N3-C4	8.91	152.37	121.52
4	B	604	K01	C23-N3-C4	8.78	151.91	121.52
4	B	604	K01	C2-N3-C4	-7.99	93.84	121.52
4	A	604	K01	C15-N14-C13	7.83	131.44	125.26
4	A	604	K01	C2-N3-C4	-7.18	96.67	121.52

Continued on next page...

Continued from previous page...

Mol	Chain	Res	Type	Atoms	Z	Observed(°)	Ideal(°)
4	B	604	K01	C15-N14-C13	7.09	130.85	125.26
4	A	604	K01	O21-C15-N14	-5.81	112.49	122.88
4	A	604	K01	O21-C15-C16	5.55	130.72	120.62
4	A	604	K01	C1-C2-N3	-5.46	90.63	111.86
3	A	601	ADP	C5-C4-N3	-4.95	119.90	126.72
3	B	601	ADP	C5-C4-N3	-4.77	120.15	126.72
3	A	601	ADP	N3-C4-N9	4.63	135.04	127.17
4	B	604	K01	C1-C2-N3	-4.53	94.22	111.86
3	B	601	ADP	N3-C4-N9	4.25	134.40	127.17
4	B	604	K01	C9-C8-C7	-4.17	102.61	110.38
4	B	604	K01	O21-C15-N14	-4.13	115.50	122.88
3	A	601	ADP	C4-N9-C8	4.00	109.93	105.74
3	B	601	ADP	C4-N9-C8	3.95	109.89	105.74
3	A	601	ADP	N3-C2-N1	-3.61	123.12	128.58
4	B	604	K01	O21-C15-C16	3.60	127.17	120.62
4	A	604	K01	C9-C8-C7	-3.49	103.87	110.38
3	A	601	ADP	C2-N3-C4	3.43	120.20	111.83
3	B	601	ADP	N3-C2-N1	-3.24	123.67	128.58
4	B	604	K01	C8-C7-C6	3.15	128.30	125.85
4	A	604	K01	C8-C7-C6	3.09	128.25	125.85
3	B	601	ADP	C2-N3-C4	3.06	119.30	111.83
4	A	604	K01	C23-N3-C2	-3.06	109.20	116.33
3	B	601	ADP	C4-C5-N7	-3.05	107.09	110.58
3	A	601	ADP	O3B-PB-O2B	2.91	118.71	107.80
4	A	604	K01	C4-C5-C6	-2.85	114.65	124.47
4	B	604	K01	C24-C23-N3	-2.72	101.27	111.86
3	A	601	ADP	N9-C8-N7	-2.70	110.11	113.94
3	B	601	ADP	N9-C8-N7	-2.56	110.31	113.94
3	A	601	ADP	C4-C5-N7	-2.53	107.69	110.58
3	B	601	ADP	C2-N1-C6	2.53	122.88	118.73
4	A	604	K01	C9-C10-C11	2.44	122.06	112.64
3	B	601	ADP	C5-N7-C8	2.43	107.26	103.45
3	A	601	ADP	C5-N7-C8	2.39	107.21	103.45
3	A	601	ADP	C2-N1-C6	2.31	122.53	118.73
4	A	604	K01	C6-C7-S12	-2.25	110.31	112.43
3	B	601	ADP	C6-C5-N7	2.22	136.37	132.09
3	A	601	ADP	C6-C5-N7	2.14	136.21	132.09
4	A	604	K01	C7-S12-C13	2.13	92.22	91.14
4	A	604	K01	C13-C5-C6	2.11	112.83	111.75
4	A	604	K01	C19-C18-S17	-2.11	107.87	113.02

There are no chirality outliers.

All (12) torsion outliers are listed below:

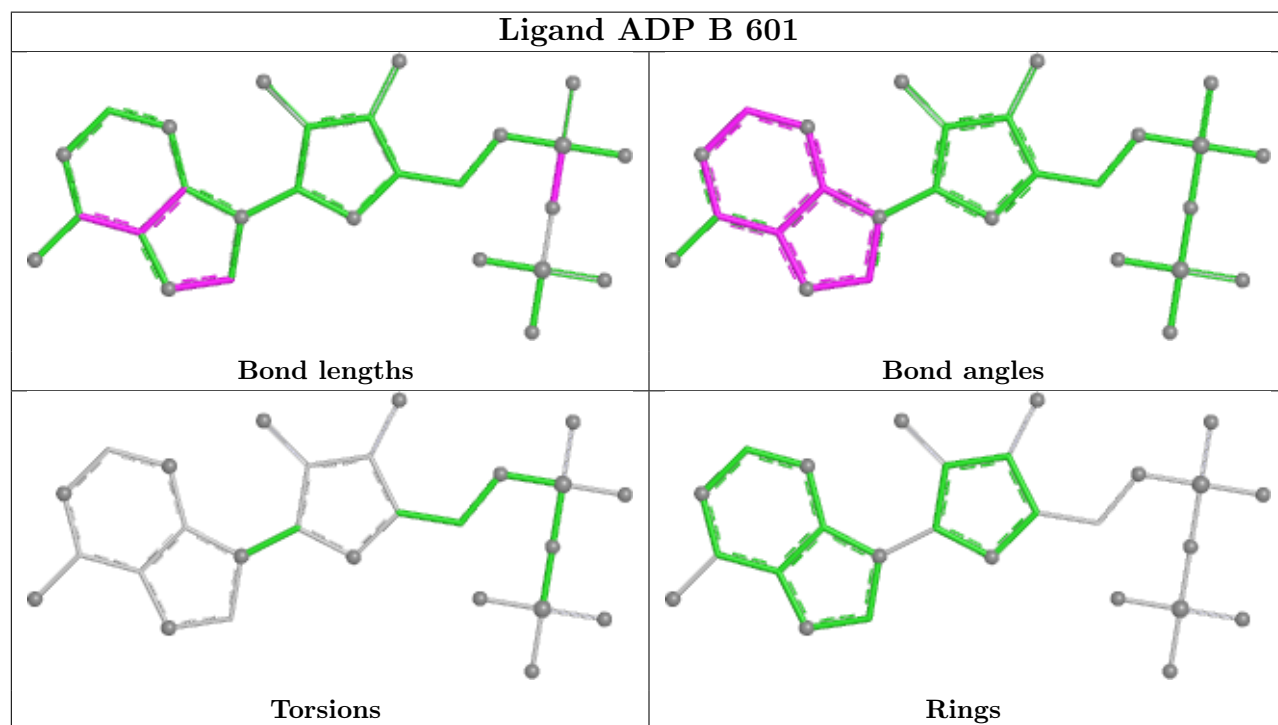
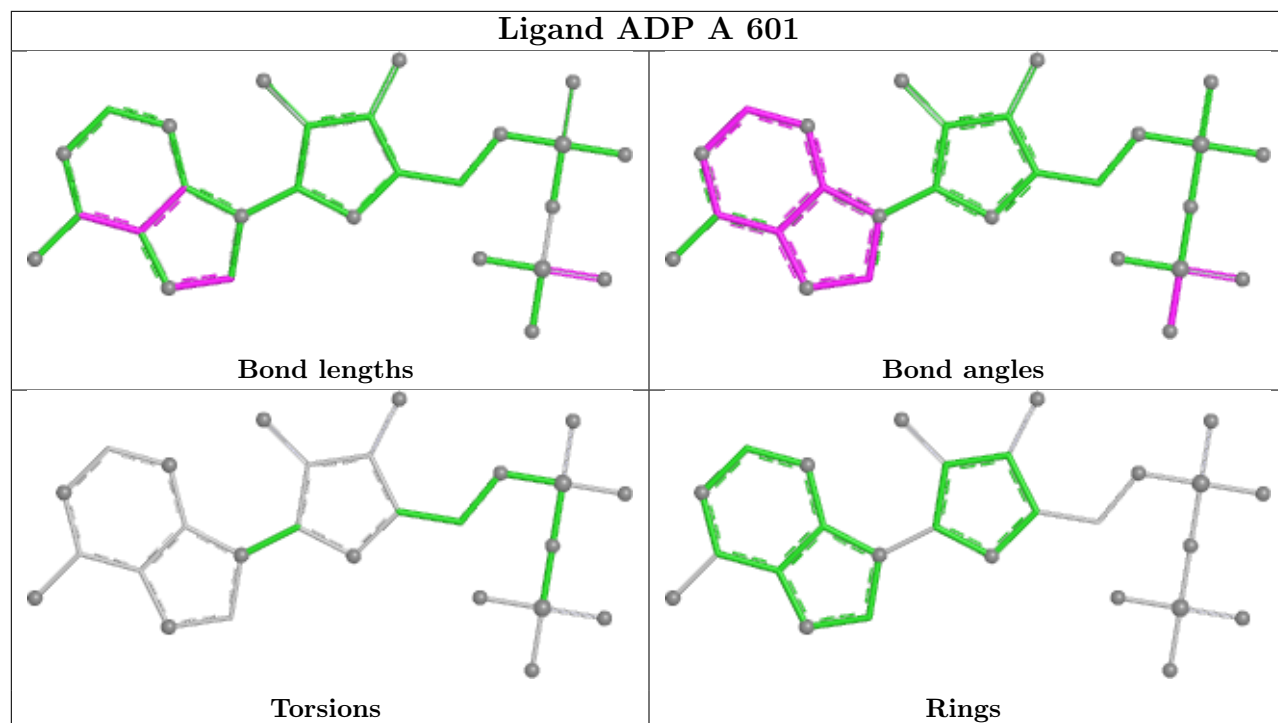
Mol	Chain	Res	Type	Atoms
4	A	604	K01	S12-C13-N14-C15
4	A	604	K01	C5-C13-N14-C15
4	A	604	K01	O22-C4-N3-C23
4	B	604	K01	S12-C13-N14-C15
4	B	604	K01	C5-C13-N14-C15
4	B	604	K01	N3-C4-C5-C13
4	B	604	K01	O22-C4-N3-C23
4	A	604	K01	C24-C23-N3-C2
4	B	604	K01	C24-C23-N3-C2
4	A	604	K01	O22-C4-C5-C13
4	B	604	K01	O22-C4-C5-C13
4	A	604	K01	N3-C4-C5-C13

There are no ring outliers.

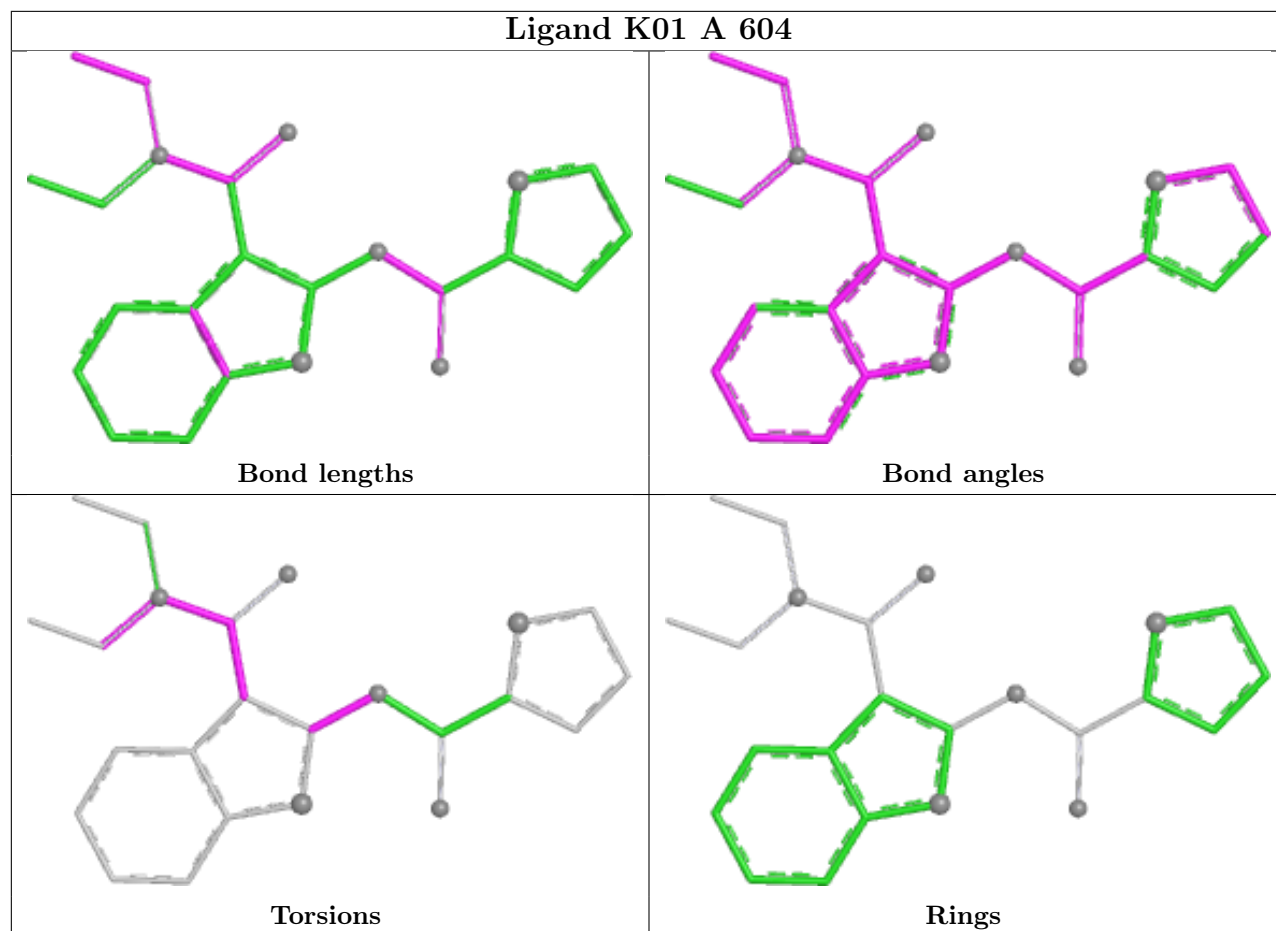
2 monomers are involved in 20 short contacts:

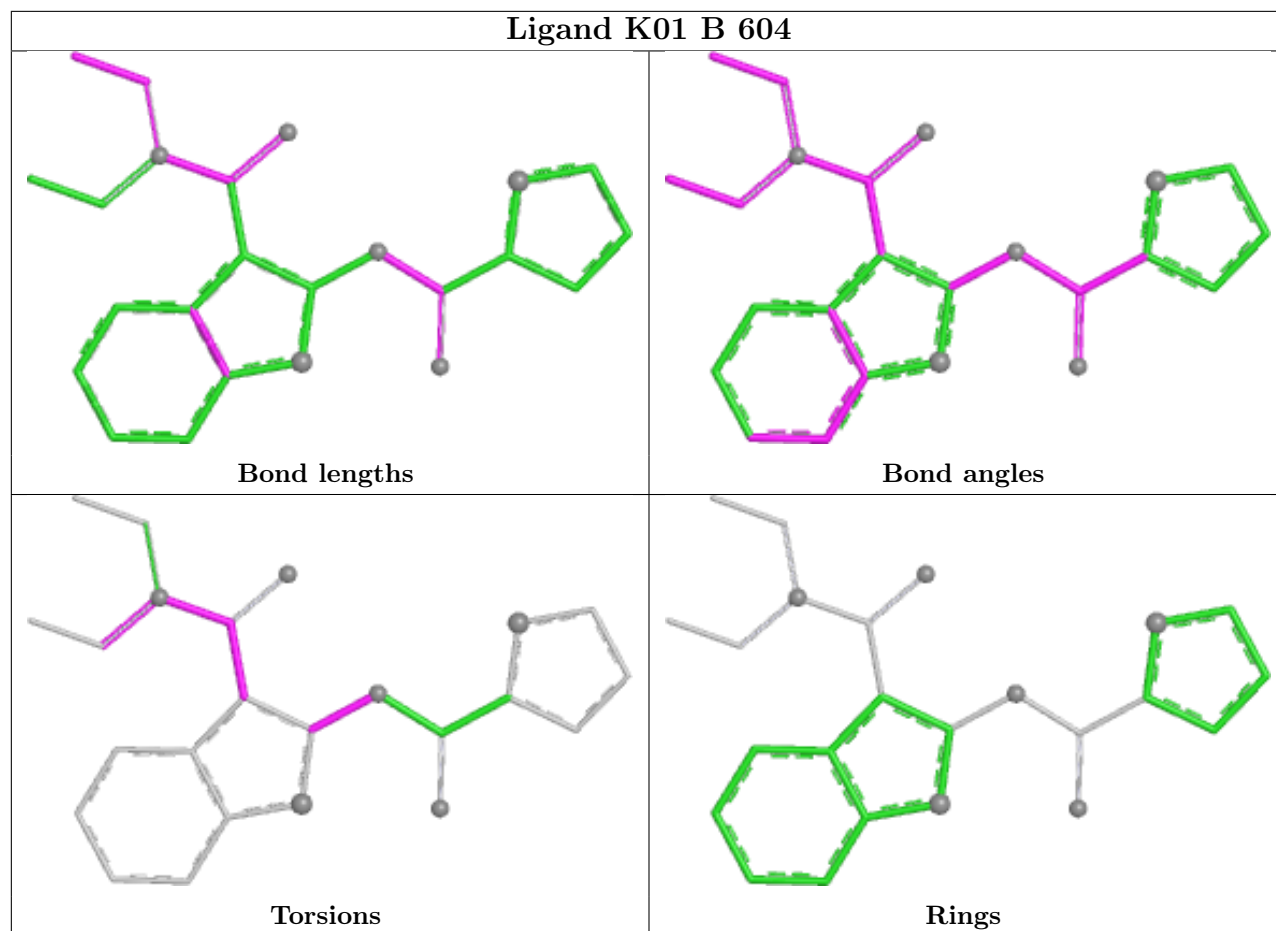
Mol	Chain	Res	Type	Clashes	Symm-Clashes
4	A	604	K01	14	0
4	B	604	K01	6	0

The following is a two-dimensional graphical depiction of Mogul quality analysis of bond lengths, bond angles, torsion angles, and ring geometry for all instances of the Ligand of Interest. In addition, ligands with molecular weight > 250 and outliers as shown on the validation Tables will also be included. For torsion angles, if less than 5% of the Mogul distribution of torsion angles is within 10 degrees of the torsion angle in question, then that torsion angle is considered an outlier. Any bond that is central to one or more torsion angles identified as an outlier by Mogul will be highlighted in the graph. For rings, the root-mean-square deviation (RMSD) between the ring in question and similar rings identified by Mogul is calculated over all ring torsion angles. If the average RMSD is greater than 60 degrees and the minimal RMSD between the ring in question and any Mogul-identified rings is also greater than 60 degrees, then that ring is considered an outlier. The outliers are highlighted in purple. The color gray indicates Mogul did not find sufficient equivalents in the CSD to analyse the geometry.



Ligand K01 A 604





5.7 Other polymers [i](#)

There are no such residues in this entry.

5.8 Polymer linkage issues [i](#)

There are no chain breaks in this entry.

6 Fit of model and data

6.1 Protein, DNA and RNA chains

In the following table, the column labelled ‘#RSRZ> 2’ contains the number (and percentage) of RSRZ outliers, followed by percent RSRZ outliers for the chain as percentile scores relative to all X-ray entries and entries of similar resolution. The OWAB column contains the minimum, median, 95th percentile and maximum values of the occupancy-weighted average B-factor per residue. The column labelled ‘Q< 0.9’ lists the number of (and percentage) of residues with an average occupancy less than 0.9.

Mol	Chain	Analysed	<RSRZ>	#RSRZ>2	OWAB(Å ²)	Q<0.9
1	A	331/368 (89%)	0.65	43 (12%) 7 7	13, 28, 50, 60	0
1	B	331/368 (89%)	0.66	43 (12%) 7 7	15, 30, 52, 61	0
All	All	662/736 (89%)	0.65	86 (12%) 7 7	13, 29, 51, 61	0

All (86) RSRZ outliers are listed below:

Mol	Chain	Res	Type	RSRZ
1	B	57	LEU	7.2
1	B	16	GLY	6.5
1	A	56	GLY	6.2
1	A	250	ILE	5.7
1	A	58	ALA	5.5
1	A	57	LEU	5.3
1	A	249	THR	5.2
1	B	58	ALA	5.2
1	A	192	ARG	5.0
1	A	60	LYS	4.7
1	A	248	THR	4.7
1	A	36	SER	4.7
1	B	361	ASN	4.2
1	B	192	ARG	4.1
1	A	61	SER	3.9
1	A	151	GLY	3.8
1	A	190	ASN	3.8
1	A	251	ASP	3.7
1	B	38	HIS	3.7
1	B	288	ILE	3.6
1	A	149	ASP	3.5
1	B	65	THR	3.5
1	B	33	ARG	3.5
1	A	16	GLY	3.3

Continued on next page...

Continued from previous page...

Mol	Chain	Res	Type	RSRZ
1	A	195	ILE	3.3
1	A	59	ASP	3.3
1	B	30	LEU	3.2
1	A	175	SER	3.2
1	B	175	SER	3.2
1	B	34	LYS	3.0
1	B	271	ASN	3.0
1	A	255	LEU	3.0
1	B	177	ASP	2.9
1	B	71	VAL	2.9
1	A	147	LEU	2.8
1	A	360	LEU	2.8
1	A	82	TYR	2.8
1	A	361	ASN	2.8
1	A	193	GLY	2.8
1	B	176	SER	2.7
1	B	97	TYR	2.7
1	B	17	LYS	2.7
1	A	30	LEU	2.7
1	B	182	LEU	2.7
1	B	19	ILE	2.7
1	B	174	PRO	2.7
1	B	190	ASN	2.7
1	B	362	LYS	2.6
1	A	271	ASN	2.6
1	B	244	HIS	2.6
1	B	37	ALA	2.6
1	B	191	LYS	2.6
1	A	97	TYR	2.6
1	A	178	VAL	2.5
1	B	55	GLY	2.4
1	A	150	ASN	2.4
1	A	153	GLU	2.4
1	A	34	LYS	2.4
1	B	59	ASP	2.4
1	B	307	PRO	2.4
1	A	362	LYS	2.4
1	B	186	ASP	2.4
1	A	288	ILE	2.4
1	A	256	VAL	2.4
1	B	173	ASN	2.3
1	A	95	MET	2.3

Continued on next page...

Continued from previous page...

Mol	Chain	Res	Type	RSRZ
1	A	188	PRO	2.3
1	A	246	LYS	2.3
1	B	42	GLU	2.3
1	B	66	TYR	2.3
1	B	35	ALA	2.3
1	B	47	ARG	2.3
1	B	195	ILE	2.3
1	A	63	ARG	2.2
1	B	31	ALA	2.2
1	A	31	ALA	2.2
1	A	191	LYS	2.2
1	B	193	GLY	2.2
1	A	253	GLU	2.1
1	A	55	GLY	2.1
1	B	56	GLY	2.1
1	B	188	PRO	2.1
1	B	61	SER	2.0
1	B	62	SER	2.0
1	A	148	THR	2.0
1	B	178	VAL	2.0

6.2 Non-standard residues in protein, DNA, RNA chains [i](#)

There are no non-standard protein/DNA/RNA residues in this entry.

6.3 Carbohydrates [i](#)

There are no oligosaccharides in this entry.

6.4 Ligands [i](#)

In the following table, the Atoms column lists the number of modelled atoms in the group and the number defined in the chemical component dictionary. The B-factors column lists the minimum, median, 95th percentile and maximum values of B factors of atoms in the group. The column labelled 'Q< 0.9' lists the number of atoms with occupancy less than 0.9.

Mol	Type	Chain	Res	Atoms	RSCC	RSR	B-factors(Å ²)	Q<0.9
4	K01	B	604	24/24	0.89	0.13	17,24,28,33	0
4	K01	A	604	24/24	0.90	0.13	14,24,28,32	0
3	ADP	A	601	27/27	0.98	0.05	13,22,25,27	0

Continued on next page...

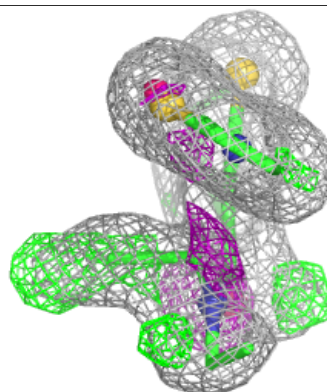
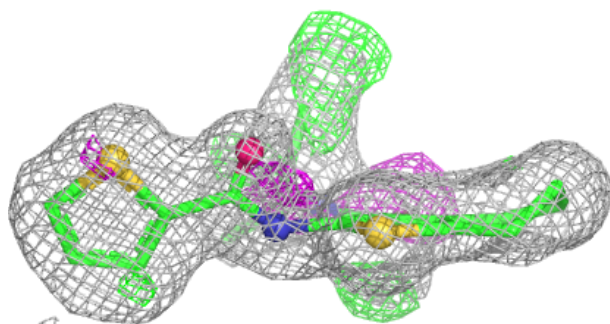
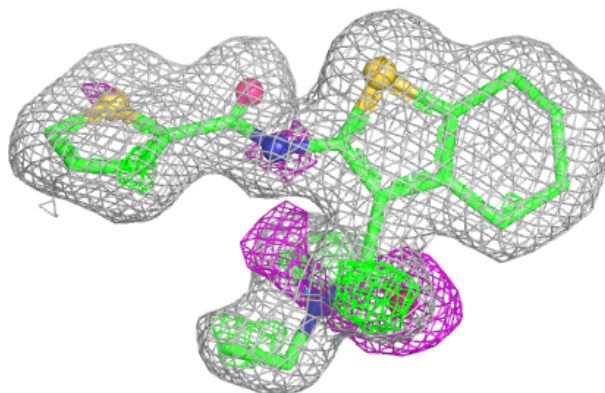
Continued from previous page...

Mol	Type	Chain	Res	Atoms	RSCC	RSR	B-factors(\AA^2)	Q<0.9
3	ADP	B	601	27/27	0.98	0.06	15,28,32,33	0
2	MG	B	603	1/1	0.99	0.04	17,17,17,17	0
2	MG	A	603	1/1	1.00	0.02	16,16,16,16	0

The following is a graphical depiction of the model fit to experimental electron density of all instances of the Ligand of Interest. In addition, ligands with molecular weight > 250 and outliers as shown on the geometry validation Tables will also be included. Each fit is shown from different orientation to approximate a three-dimensional view.

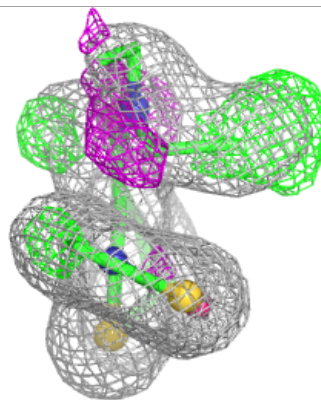
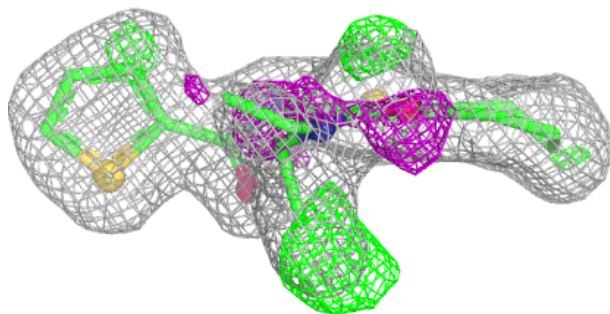
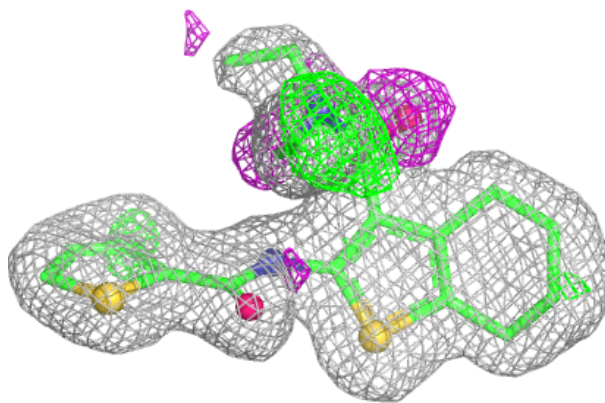
Electron density around K01 B 604:

2mF_o-DF_c (at 0.7 rmsd) in gray
mF_o-DF_c (at 3 rmsd) in purple (negative)
and green (positive)



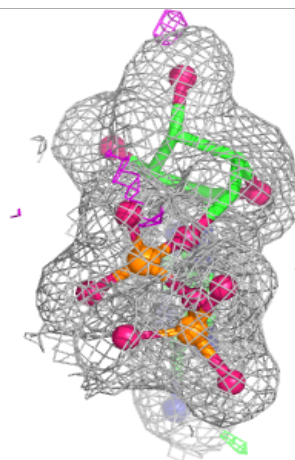
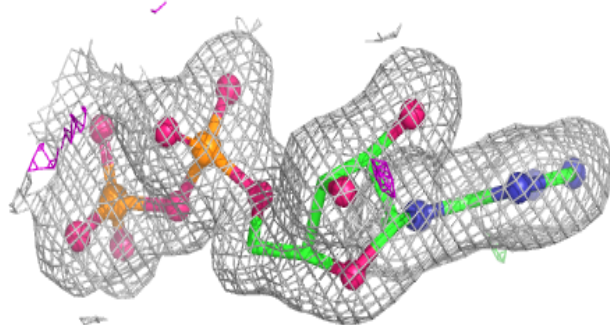
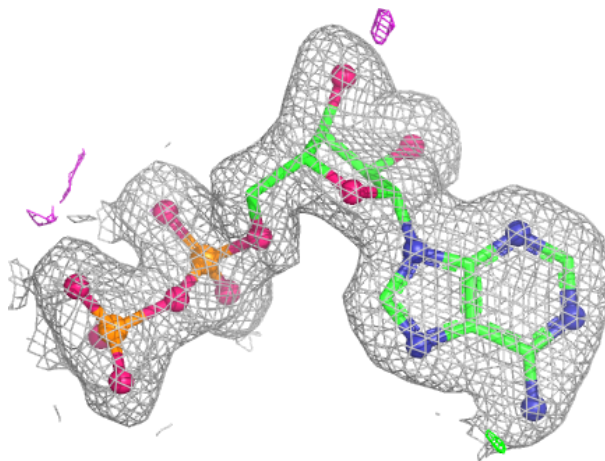
Electron density around K01 A 604:

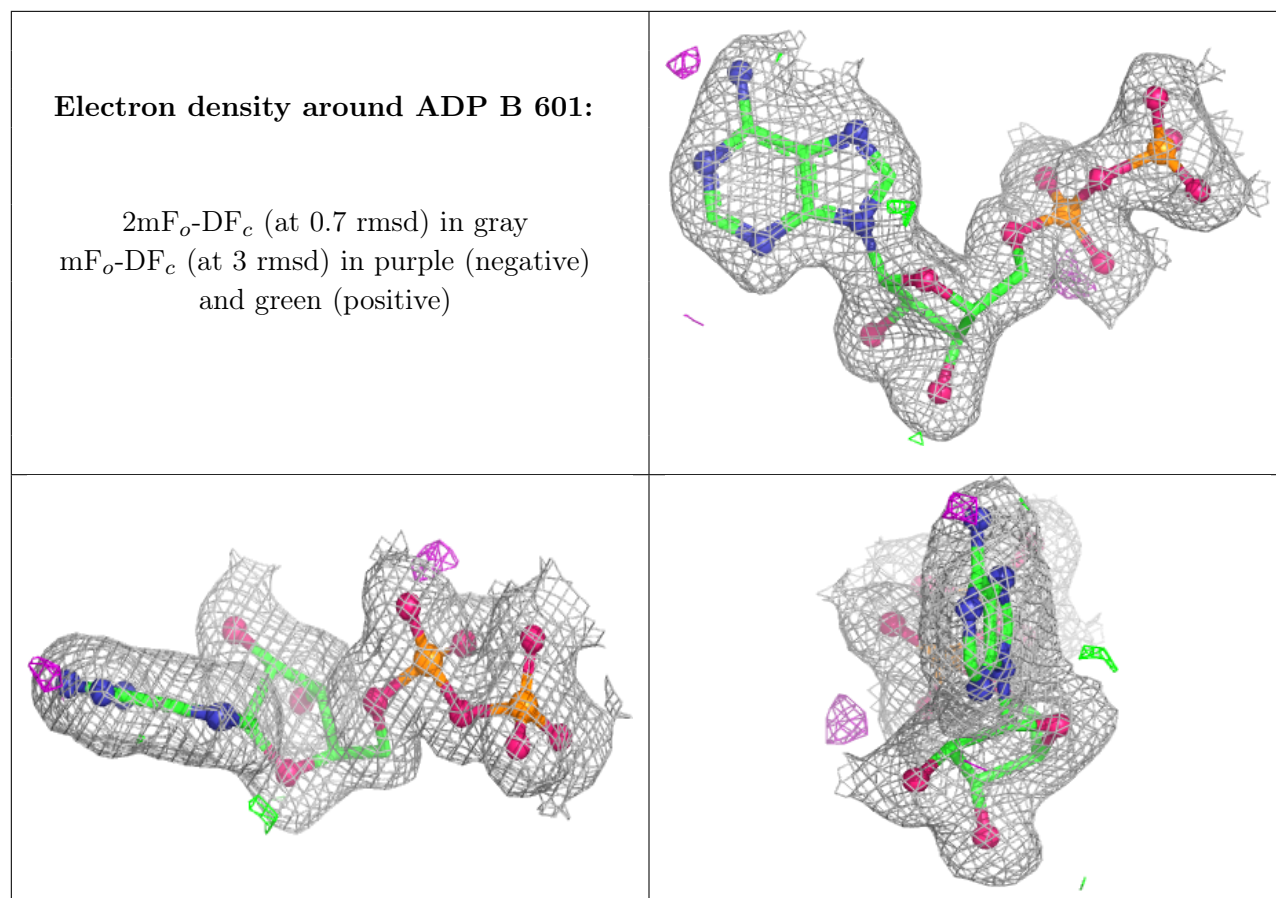
$2mF_o-DF_c$ (at 0.7 rmsd) in gray
 mF_o-DF_c (at 3 rmsd) in purple (negative)
and green (positive)



Electron density around ADP A 601:

$2mF_o-DF_c$ (at 0.7 rmsd) in gray
 mF_o-DF_c (at 3 rmsd) in purple (negative)
and green (positive)





6.5 Other polymers ⓘ

There are no such residues in this entry.