



# wwPDB X-ray Structure Validation Summary Report ⓘ

Mar 10, 2026 – 08:22 AM UTC

PDB ID : 2O74 / pdb\_00002o74  
Title : Structure of OHCU decarboxylase in complex with guanine  
Authors : Cendron, L.; Berni, R.; Folli, C.; Ramazzina, I.; Percudani, R.; Zanotti, G.  
Deposited on : 2006-12-10  
Resolution : 1.80 Å(reported)

This is a wwPDB X-ray Structure Validation Summary Report for a publicly released PDB entry.

We welcome your comments at [validation@mail.wwpdb.org](mailto:validation@mail.wwpdb.org)

A user guide is available at

<https://www.wwpdb.org/validation/2017/XrayValidationReportHelp>

with specific help available everywhere you see the ⓘ symbol.

The types of validation reports are described at

<http://www.wwpdb.org/validation/2017/FAQs#types>.

---

The following versions of software and data (see [references ⓘ](#)) were used in the production of this report:

MolProbity	:	4-5-2 with Phenix2.0
Mogul	:	2022.3.0, CSD as543be (2022)
Xtriage (Phenix)	:	2.0
EDS	:	3.0
Percentile statistics	:	20250101.v01 (using entries in the PDB archive January 1st 2025)
CCP4	:	9.0.010 (Gargrove)
Density-Fitness	:	1.0.12
Ideal geometry (proteins)	:	Engh & Huber (2001)
Ideal geometry (DNA, RNA)	:	Parkinson et al. (1996)
Validation Pipeline (wwPDB-VP)	:	2.49

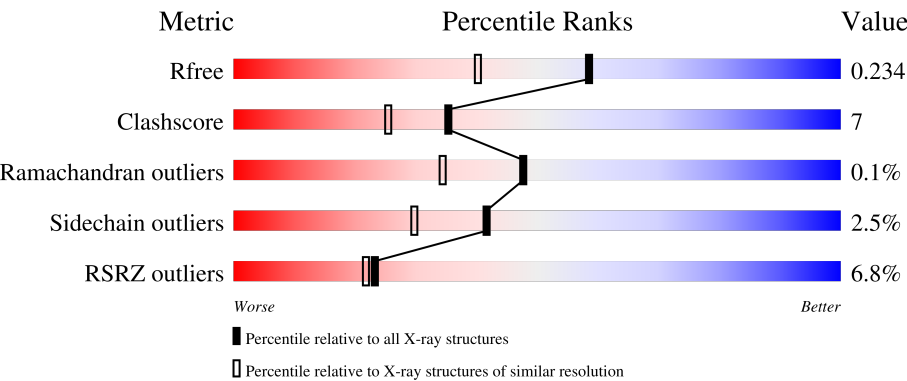
# 1 Overall quality at a glance i

The following experimental techniques were used to determine the structure:

*X-RAY DIFFRACTION*

The reported resolution of this entry is 1.80 Å.

Percentile scores (ranging between 0-100) for global validation metrics of the entry are shown in the following graphic. The table shows the number of entries on which the scores are based.




Metric	Whole archive (#Entries)	Similar resolution (#Entries, resolution range(Å))
R <sub>free</sub>	180053	7662 (1.80-1.80)
Clashscore	190562	8479 (1.80-1.80)
Ramachandran outliers	187476	8391 (1.80-1.80)
Sidechain outliers	187428	8390 (1.80-1.80)
RSRZ outliers	180081	7663 (1.80-1.80)

The table below summarises the geometric issues observed across the polymeric chains and their fit to the electron density. The red, orange, yellow and green segments of the lower bar indicate the fraction of residues that contain outliers for  $\geq 3$ , 2, 1 and 0 types of geometric quality criteria respectively. A grey segment represents the fraction of residues that are not modelled. The numeric value for each fraction is indicated below the corresponding segment, with a dot representing fractions  $\leq 5\%$ . The upper red bar (where present) indicates the fraction of residues that have poor fit to the electron density. The numeric value is given above the bar.

Mol	Chain	Length	Quality of chain
1	A	174	<div><div>13%</div><div><div></div><div>75%</div><div>19%</div><div>• 5%</div></div></div>
1	B	174	<div><div>5%</div><div><div></div><div>77%</div><div>16%</div><div>• 6%</div></div></div>
1	C	174	<div><div>6%</div><div><div></div><div>84%</div><div>11%</div><div>•</div></div></div>
1	D	174	<div><div>5%</div><div><div></div><div>80%</div><div>13%</div><div>• 6%</div></div></div>
1	E	174	<div><div>6%</div><div><div></div><div>82%</div><div>11%</div><div>• 6%</div></div></div>

Continued on next page...

*Continued from previous page...*

Mol	Chain	Length	Quality of chain
1	F	174	 A horizontal bar chart showing the quality of chain 1. The bar is divided into segments: a small red segment at the beginning labeled '5%', a long green segment labeled '87%', a small yellow segment labeled '9%', and a small grey segment at the end. There are two dots at the far right end of the bar.

The following table lists non-polymeric compounds, carbohydrate monomers and non-standard residues in protein, DNA, RNA chains that are outliers for geometric or electron-density-fit criteria:

Mol	Type	Chain	Res	Chirality	Geometry	Clashes	Electron density
2	GUN	B	2001	-	-	X	-

## 2 Entry composition [i](#)

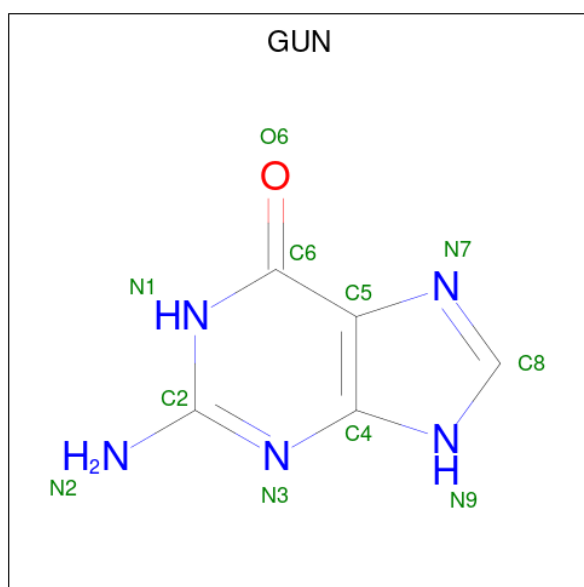
There are 3 unique types of molecules in this entry. The entry contains 8749 atoms, of which 0 are hydrogens and 0 are deuteriums.

In the tables below, the ZeroOcc column contains the number of atoms modelled with zero occupancy, the AltConf column contains the number of residues with at least one atom in alternate conformation and the Trace column contains the number of residues modelled with at most 2 atoms.

- Molecule 1 is a protein called OHCU decarboxylase.

Mol	Chain	Residues	Atoms					ZeroOcc	AltConf	Trace
1	A	165	Total	C	N	O	S	0	0	0
			1313	826	231	249	7			
1	B	164	Total	C	N	O	S	0	0	0
			1306	821	230	248	7			
1	C	167	Total	C	N	O	S	0	0	0
			1329	837	233	251	8			
1	D	164	Total	C	N	O	S	0	0	0
			1306	821	230	248	7			
1	E	164	Total	C	N	O	S	0	0	0
			1306	821	230	248	7			
1	F	168	Total	C	N	O	S	0	0	0
			1335	840	234	253	8			

- Molecule 2 is GUANINE (CCD ID: GUN) (formula: C<sub>5</sub>H<sub>5</sub>N<sub>5</sub>O).



Mol	Chain	Residues	Atoms				ZeroOcc	AltConf
2	A	1	Total	C	N	O	0	0
			11	5	5	1		
2	B	1	Total	C	N	O	0	0
			11	5	5	1		
2	C	1	Total	C	N	O	0	0
			11	5	5	1		
2	D	1	Total	C	N	O	0	0
			11	5	5	1		
2	E	1	Total	C	N	O	0	0
			11	5	5	1		
2	F	1	Total	C	N	O	0	0
			11	5	5	1		

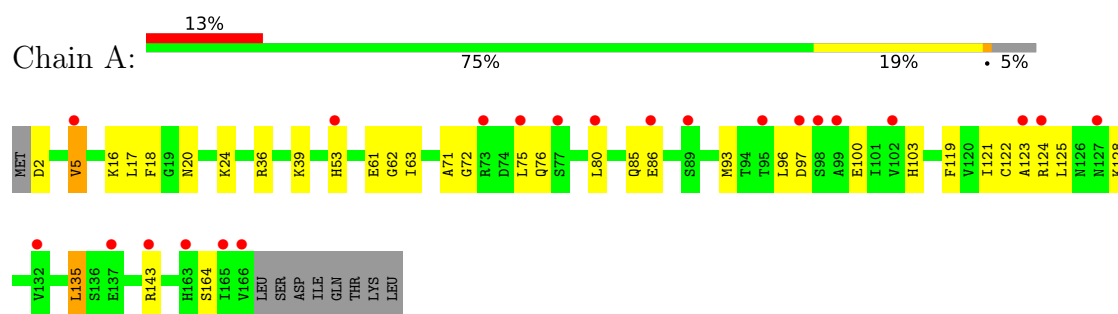
- Molecule 3 is water.

Mol	Chain	Residues	Atoms		ZeroOcc	AltConf
3	A	117	Total	O	0	0
			117	117		
3	B	122	Total	O	0	0
			122	122		
3	C	150	Total	O	0	0
			150	150		
3	D	140	Total	O	0	0
			140	140		
3	E	87	Total	O	0	0
			87	87		
3	F	172	Total	O	0	0
			172	172		

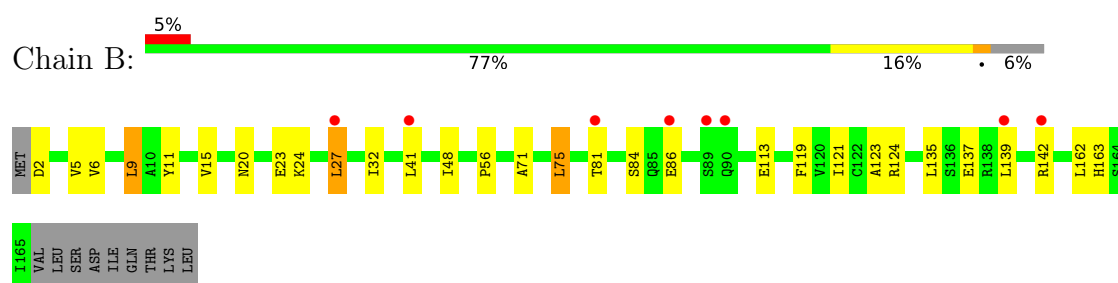
### 3 Residue-property plots [i](#)

These plots are drawn for all protein, RNA, DNA and oligosaccharide chains in the entry. The first graphic for a chain summarises the proportions of the various outlier classes displayed in the second graphic. The second graphic shows the sequence view annotated by issues in geometry and electron density. Residues are color-coded according to the number of geometric quality criteria for which they contain at least one outlier: green = 0, yellow = 1, orange = 2 and red = 3 or more. A red dot above a residue indicates a poor fit to the electron density ( $RSRZ > 2$ ). Stretches of 2 or more consecutive residues without any outlier are shown as a green connector. Residues present in the sample, but not in the model, are shown in grey.

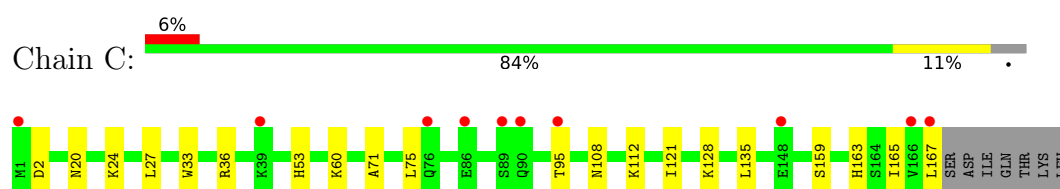
#### • Molecule 1: OHCU decarboxylase



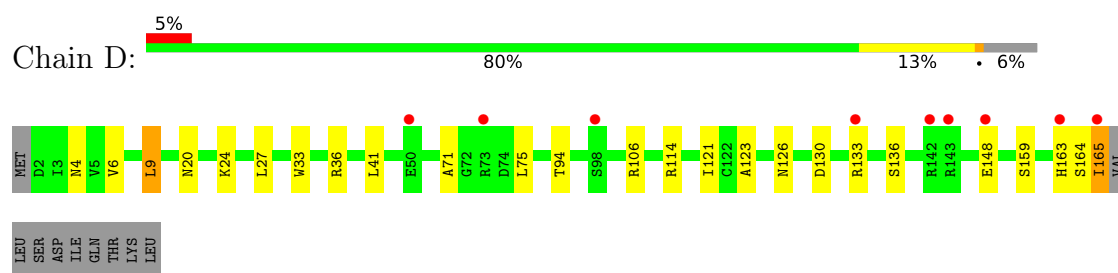
#### • Molecule 1: OHCU decarboxylase



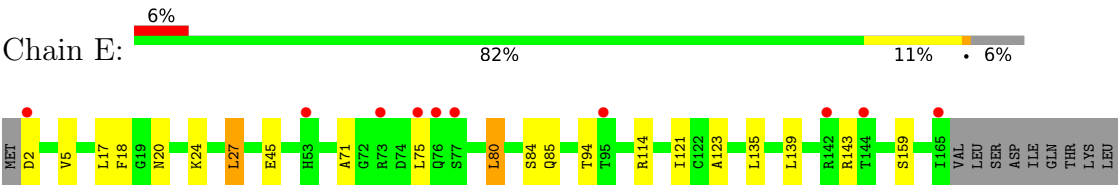
#### • Molecule 1: OHCU decarboxylase



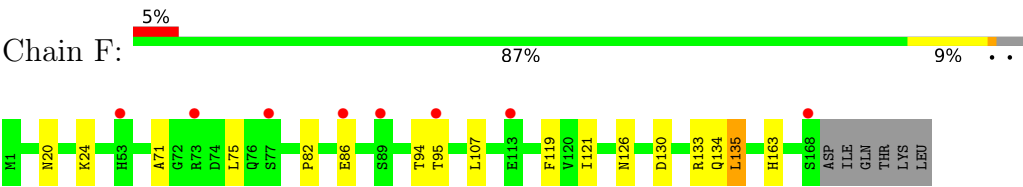
#### • Molecule 1: OHCU decarboxylase



● Molecule 1: OHCU decarboxylase



● Molecule 1: OHCU decarboxylase



## 4 Data and refinement statistics

Property	Value	Source
Space group	P 32	Depositor
Cell constants a, b, c, $\alpha$ , $\beta$ , $\gamma$	102.22Å 102.22Å 103.89Å 90.00° 90.00° 120.00°	Depositor
Resolution (Å)	88.00 – 1.80 88.00 – 1.80	Depositor EDS
% Data completeness (in resolution range)	99.6 (88.00-1.80) 99.6 (88.00-1.80)	Depositor EDS
$R_{merge}$	0.07	Depositor
$R_{sym}$	(Not available)	Depositor
$\langle I/\sigma(I) \rangle$ <sup>1</sup>	2.03 (at 1.79Å)	Xtriage
Refinement program	REFMAC 5.2.0019	Depositor
R, $R_{free}$	0.221 , 0.257 0.221 , 0.234	Depositor DCC
$R_{free}$ test set	No test flags present.	wwPDB-VP
Wilson B-factor (Å <sup>2</sup> )	25.4	Xtriage
Anisotropy	0.137	Xtriage
Bulk solvent $k_{sol}$ (e/Å <sup>3</sup> ), $B_{sol}$ (Å <sup>2</sup> )	0.38 , 34.6	EDS
L-test for twinning <sup>2</sup>	$\langle  L  \rangle = 0.50$ , $\langle L^2 \rangle = 0.33$	Xtriage
Estimated twinning fraction	0.007 for -h,-k,l 0.022 for h,-h-k,-l 0.014 for -k,-h,-l	Xtriage
$F_o, F_c$ correlation	0.94	EDS
Total number of atoms	8749	wwPDB-VP
Average B, all atoms (Å <sup>2</sup> )	24.0	wwPDB-VP

Xtriage's analysis on translational NCS is as follows: *The largest off-origin peak in the Patterson function is 7.90% of the height of the origin peak. No significant pseudotranslation is detected.*

<sup>1</sup>Intensities estimated from amplitudes.

<sup>2</sup>Theoretical values of  $\langle |L| \rangle$ ,  $\langle L^2 \rangle$  for acentric reflections are 0.5, 0.333 respectively for untwinned datasets, and 0.375, 0.2 for perfectly twinned datasets.



## 5 Model quality

### 5.1 Standard geometry

Bond lengths and bond angles in the following residue types are not validated in this section: GUN

The Z score for a bond length (or angle) is the number of standard deviations the observed value is removed from the expected value. A bond length (or angle) with  $|Z| > 5$  is considered an outlier worth inspection. RMSZ is the root-mean-square of all Z scores of the bond lengths (or angles).

Mol	Chain	Bond lengths		Bond angles	
		RMSZ	$\# Z  > 5$	RMSZ	$\# Z  > 5$
1	A	0.57	0/1335	0.80	0/1801
1	B	0.56	0/1328	0.78	0/1791
1	C	0.61	0/1351	0.79	0/1822
1	D	0.58	0/1328	0.75	0/1791
1	E	0.52	0/1328	0.80	1/1791 (0.1%)
1	F	0.60	0/1357	0.77	0/1830
All	All	0.57	0/8027	0.78	1/10826 (0.0%)

There are no bond length outliers.

All (1) bond angle outliers are listed below:

Mol	Chain	Res	Type	Atoms	Z	Observed(°)	Ideal(°)
1	E	27	LEU	CA-CB-CG	5.10	134.15	116.30

There are no chirality outliers.

There are no planarity outliers.

### 5.2 Too-close contacts

In the following table, the Non-H and H(model) columns list the number of non-hydrogen atoms and hydrogen atoms in the chain respectively. The H(added) column lists the number of hydrogen atoms added and optimized by MolProbity. The Clashes column lists the number of clashes within the asymmetric unit, whereas Symm-Clashes lists symmetry-related clashes.

Mol	Chain	Non-H	H(model)	H(added)	Clashes	Symm-Clashes
1	A	1313	0	1314	34	0
1	B	1306	0	1305	27	0
1	C	1329	0	1337	11	0
1	D	1306	0	1305	21	0

*Continued on next page...*

*Continued from previous page...*

Mol	Chain	Non-H	H(model)	H(added)	Clashes	Symm-Clashes
1	E	1306	0	1305	13	0
1	F	1335	0	1342	15	0
2	A	11	0	5	3	0
2	B	11	0	5	4	0
2	C	11	0	5	1	0
2	D	11	0	5	2	0
2	E	11	0	5	3	0
2	F	11	0	5	1	0
3	A	117	0	0	9	0
3	B	122	0	0	6	0
3	C	150	0	0	1	0
3	D	140	0	0	5	0
3	E	87	0	0	0	0
3	F	172	0	0	4	0
All	All	8749	0	7938	117	0

The all-atom clashscore is defined as the number of clashes found per 1000 atoms (including hydrogen atoms). The all-atom clashscore for this structure is 7.

The worst 5 of 117 close contacts within the same asymmetric unit are listed below, sorted by their clash magnitude.

Atom-1	Atom-2	Interatomic distance (Å)	Clash overlap (Å)
1:D:71:ALA:HA	1:D:75:LEU:HD23	1.32	1.06
1:B:27:LEU:HD22	3:B:2122:HOH:O	1.60	1.01
1:A:75:LEU:HA	1:A:80:LEU:HD11	1.02	1.00
1:A:75:LEU:CA	1:A:80:LEU:HD11	1.97	0.94
1:A:75:LEU:HA	1:A:80:LEU:CD1	1.96	0.94

There are no symmetry-related clashes.

## 5.3 Torsion angles [i](#)

### 5.3.1 Protein backbone [i](#)

In the following table, the Percentiles column shows the percent Ramachandran outliers of the chain as a percentile score with respect to all X-ray entries followed by that with respect to entries of similar resolution.

The Analysed column shows the number of residues for which the backbone conformation was analysed, and the total number of residues.

Mol	Chain	Analysed	Favoured	Allowed	Outliers	Percentiles	
1	A	163/174 (94%)	160 (98%)	2 (1%)	1 (1%)	21	11
1	B	162/174 (93%)	160 (99%)	2 (1%)	0	100	100
1	C	165/174 (95%)	163 (99%)	2 (1%)	0	100	100
1	D	162/174 (93%)	160 (99%)	2 (1%)	0	100	100
1	E	162/174 (93%)	159 (98%)	3 (2%)	0	100	100
1	F	166/174 (95%)	165 (99%)	1 (1%)	0	100	100
All	All	980/1044 (94%)	967 (99%)	12 (1%)	1 (0%)	48	34

All (1) Ramachandran outliers are listed below:

Mol	Chain	Res	Type
1	A	128	LYS

### 5.3.2 Protein sidechains ⓘ

In the following table, the Percentiles column shows the percent sidechain outliers of the chain as a percentile score with respect to all X-ray entries followed by that with respect to entries of similar resolution.

The Analysed column shows the number of residues for which the sidechain conformation was analysed, and the total number of residues.

Mol	Chain	Analysed	Rotameric	Outliers	Percentiles	
1	A	145/154 (94%)	142 (98%)	3 (2%)	47	36
1	B	144/154 (94%)	138 (96%)	6 (4%)	26	14
1	C	147/154 (96%)	143 (97%)	4 (3%)	39	27
1	D	144/154 (94%)	140 (97%)	4 (3%)	38	26
1	E	144/154 (94%)	140 (97%)	4 (3%)	38	26
1	F	148/154 (96%)	147 (99%)	1 (1%)	76	73
All	All	872/924 (94%)	850 (98%)	22 (2%)	42	30

5 of 22 residues with a non-rotameric sidechain are listed below:

Mol	Chain	Res	Type
1	D	27	LEU
1	E	27	LEU
1	D	165	ILE
1	E	80	LEU

*Continued on next page...*

*Continued from previous page...*

Mol	Chain	Res	Type
1	B	135	LEU

Sometimes sidechains can be flipped to improve hydrogen bonding and reduce clashes. 5 of 21 such sidechains are listed below:

Mol	Chain	Res	Type
1	E	103	HIS
1	F	20	ASN
1	F	163	HIS
1	F	53	HIS
1	E	163	HIS

### 5.3.3 RNA [i](#)

There are no RNA molecules in this entry.

## 5.4 Non-standard residues in protein, DNA, RNA chains [i](#)

There are no non-standard protein/DNA/RNA residues in this entry.

## 5.5 Carbohydrates [i](#)

There are no oligosaccharides in this entry.

## 5.6 Ligand geometry [i](#)

6 ligands are modelled in this entry.

In the following table, the Counts columns list the number of bonds (or angles) for which Mogul statistics could be retrieved, the number of bonds (or angles) that are observed in the model and the number of bonds (or angles) that are defined in the Chemical Component Dictionary. The Link column lists molecule types, if any, to which the group is linked. The Z score for a bond length (or angle) is the number of standard deviations the observed value is removed from the expected value. A bond length (or angle) with  $|Z| > 2$  is considered an outlier worth inspection. RMSZ is the root-mean-square of all Z scores of the bond lengths (or angles).

Mol	Type	Chain	Res	Link	Bond lengths			Bond angles		
					Counts	RMSZ	$\# Z  > 2$	Counts	RMSZ	$\# Z  > 2$
2	GUN	A	1001	-	12,12,12	0.65	0	15,17,17	0.73	0
2	GUN	B	2001	-	12,12,12	0.79	0	15,17,17	0.48	0

Mol	Type	Chain	Res	Link	Bond lengths			Bond angles		
					Counts	RMSZ	# Z  > 2	Counts	RMSZ	# Z  > 2
2	GUN	E	6001	-	12,12,12	0.84	1 (8%)	15,17,17	0.31	0
2	GUN	F	5001	-	12,12,12	1.08	1 (8%)	15,17,17	1.93	5 (33%)
2	GUN	C	3001	-	12,12,12	1.02	1 (8%)	15,17,17	1.54	3 (20%)
2	GUN	D	4001	-	12,12,12	0.80	0	15,17,17	0.57	0

In the following table, the Chirals column lists the number of chiral outliers, the number of chiral centers analysed, the number of these observed in the model and the number defined in the Chemical Component Dictionary. Similar counts are reported in the Torsion and Rings columns. '-' means no outliers of that kind were identified.

Mol	Type	Chain	Res	Link	Chirals	Torsions	Rings
2	GUN	A	1001	-	-	-	0/2/2/2
2	GUN	B	2001	-	-	-	0/2/2/2
2	GUN	E	6001	-	-	-	0/2/2/2
2	GUN	F	5001	-	-	-	0/2/2/2
2	GUN	C	3001	-	-	-	0/2/2/2
2	GUN	D	4001	-	-	-	0/2/2/2

All (3) bond length outliers are listed below:

Mol	Chain	Res	Type	Atoms	Z	Observed(Å)	Ideal(Å)
2	F	5001	GUN	C8-N9	2.70	1.39	1.35
2	C	3001	GUN	C8-N9	2.37	1.38	1.35
2	E	6001	GUN	C8-N9	2.03	1.38	1.35

The worst 5 of 8 bond angle outliers are listed below:

Mol	Chain	Res	Type	Atoms	Z	Observed(°)	Ideal(°)
2	F	5001	GUN	C8-N9-C4	3.72	110.38	106.25
2	F	5001	GUN	C5-C4-N9	-3.19	101.62	106.17
2	C	3001	GUN	C8-N9-C4	2.78	109.34	106.25
2	C	3001	GUN	C2-N3-C4	-2.63	108.72	113.36
2	C	3001	GUN	C5-C4-N9	-2.56	102.52	106.17

There are no chirality outliers.

There are no torsion outliers.

There are no ring outliers.

6 monomers are involved in 14 short contacts:

Mol	Chain	Res	Type	Clashes	Symm-Clashes
2	A	1001	GUN	3	0
2	B	2001	GUN	4	0
2	E	6001	GUN	3	0
2	F	5001	GUN	1	0
2	C	3001	GUN	1	0
2	D	4001	GUN	2	0

## 5.7 Other polymers [i](#)

There are no such residues in this entry.

## 5.8 Polymer linkage issues [i](#)

There are no chain breaks in this entry.

## 6 Fit of model and data [i](#)

### 6.1 Protein, DNA and RNA chains [i](#)

In the following table, the column labelled ‘#RSRZ> 2’ contains the number (and percentage) of RSRZ outliers, followed by percent RSRZ outliers for the chain as percentile scores relative to all X-ray entries and entries of similar resolution. The OWAB column contains the minimum, median, 95<sup>th</sup> percentile and maximum values of the occupancy-weighted average B-factor per residue. The column labelled ‘Q< 0.9’ lists the number of (and percentage) of residues with an average occupancy less than 0.9.

Mol	Chain	Analysed	<RSRZ>	#RSRZ>2	OWAB(Å <sup>2</sup> )	Q<0.9
1	A	165/174 (94%)	0.75	22 (13%) 7 6	15, 24, 33, 35	0
1	B	164/174 (94%)	0.46	8 (4%) 35 33	15, 23, 32, 35	0
1	C	167/174 (95%)	0.36	10 (5%) 27 26	13, 21, 32, 43	0
1	D	164/174 (94%)	0.43	9 (5%) 30 29	13, 23, 32, 37	0
1	E	164/174 (94%)	0.65	10 (6%) 27 25	15, 24, 33, 35	0
1	F	168/174 (96%)	0.30	8 (4%) 35 34	12, 21, 30, 32	0
All	All	992/1044 (95%)	0.49	67 (6%) 23 22	12, 23, 32, 43	0

The worst 5 of 67 RSRZ outliers are listed below:

Mol	Chain	Res	Type	RSRZ
1	C	167	LEU	6.7
1	D	165	ILE	5.6
1	A	95	THR	4.3
1	F	86	GLU	4.0
1	C	95	THR	3.7

### 6.2 Non-standard residues in protein, DNA, RNA chains [i](#)

There are no non-standard protein/DNA/RNA residues in this entry.

### 6.3 Carbohydrates [i](#)

There are no oligosaccharides in this entry.

## 6.4 Ligands [i](#)

In the following table, the Atoms column lists the number of modelled atoms in the group and the number defined in the chemical component dictionary. The B-factors column lists the minimum, median, 95<sup>th</sup> percentile and maximum values of B factors of atoms in the group. The column labelled 'Q< 0.9' lists the number of atoms with occupancy less than 0.9.

Mol	Type	Chain	Res	Atoms	RSCC	RSR	B-factors( $\text{\AA}^2$ )	Q<0.9
2	GUN	C	3001	11/11	0.77	0.13	24,24,25,25	0
2	GUN	F	5001	11/11	0.82	0.13	23,23,24,25	0
2	GUN	A	1001	11/11	0.93	0.07	24,25,25,25	0
2	GUN	E	6001	11/11	0.94	0.07	25,25,25,25	0
2	GUN	B	2001	11/11	0.94	0.07	22,23,23,23	0
2	GUN	D	4001	11/11	0.96	0.06	22,22,23,23	0

## 6.5 Other polymers [i](#)

There are no such residues in this entry.