



Full wwPDB EM Validation Report ⓘ

Mar 12, 2026 – 08:46 PM UTC

PDB ID : 9MSG / pdb_00009msg
EMDB ID : EMD-48588
Title : De novo SigN RNA polymerase transcription initiation intermediate with bound SigN-RII
Authors : Mueller, A.U.; Darst, S.A.
Deposited on : 2025-01-09
Resolution : 2.70 Å(reported)

This is a Full wwPDB EM Validation Report for a publicly released PDB entry.

We welcome your comments at validation@mail.wwpdb.org

A user guide is available at

<https://www.wwpdb.org/validation/2017/EMValidationReportHelp>
with specific help available everywhere you see the ⓘ symbol.

The types of validation reports are described at

<http://www.wwpdb.org/validation/2017/FAQs#types>.

The following versions of software and data (see [references ⓘ](#)) were used in the production of this report:

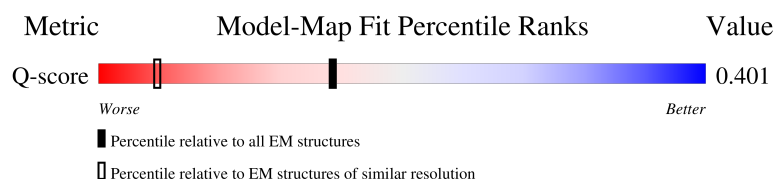
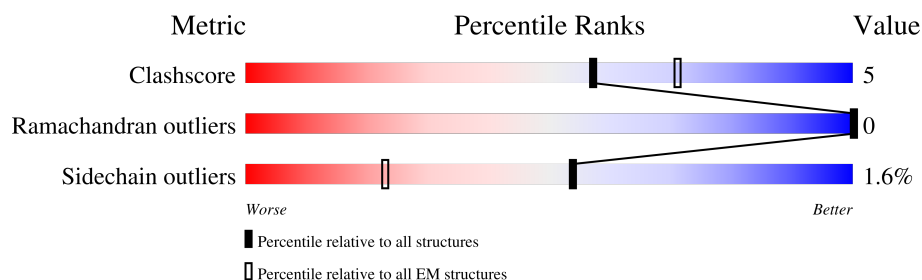
EMDB validation analysis : 0.0.1.dev132
Mogul : 2022.3.0, CSD as543be (2022)
MolProbity : 4-5-2 with Phenix2.0
Buster-report : wwPDB partial adaption of 1.1.7 (2018)
Percentile statistics : 20250101.v01 (using entries in the PDB archive January 1st 2025)
EM percentile statistics : 202505.v01 (Using data in the EMDB archive up until May 2025)
MapQ : 1.9.13
Ideal geometry (proteins) : Engh & Huber (2001)
Ideal geometry (DNA, RNA) : Parkinson et al. (1996)
Validation Pipeline (wwPDB-VP) : 2.49

1 Overall quality at a glance

The following experimental techniques were used to determine the structure:
ELECTRON MICROSCOPY

The reported resolution of this entry is 2.70 Å.

Percentile scores (ranging between 0-100) for global validation metrics of the entry are shown in the following graphic. The table shows the number of entries on which the scores are based.



Metric	Whole archive (#Entries)	EM structures (#Entries)	Similar EM resolution (#Entries, resolution range(Å))
Clashscore	229148	23984	-
Ramachandran outliers	224038	23583	-
Sidechain outliers	223484	23102	-
Q-score	-	25397	10327 (2.20 - 3.20)

The table below summarises the geometric issues observed across the polymeric chains and their fit to the map. The red, orange, yellow and green segments of the bar indicate the fraction of residues that contain outliers for ≥ 3 , 2, 1 and 0 types of geometric quality criteria respectively. A grey segment represents the fraction of residues that are not modelled. The numeric value for each fraction is indicated below the corresponding segment, with a dot representing fractions $\leq 5\%$. The upper red bar (where present) indicates the fraction of residues that have poor fit to the EM map (all-atom inclusion $< 40\%$). The numeric value is given above the bar.

Mol	Chain	Length	Quality of chain
1	A	268	<div> <div>92%</div> <div>76% 16% 8%</div> </div>
1	B	268	<div> <div>91%</div> <div>74% 18% 8%</div> </div>
1	C	268	<div> <div>92%</div> <div>77% 15% 8%</div> </div>
1	D	268	<div> <div>92%</div> <div>74% 18% 8%</div> </div>

Continued on next page...

Continued from previous page...

Mol	Chain	Length	Quality of chain
1	E	268	<div><div></div><div>92%</div><div></div><div>75%</div><div>17%</div><div>8%</div></div>
1	F	268	<div><div></div><div>92%</div><div></div><div>72%</div><div>20%</div><div>8%</div></div>
2	G	329	<div><div></div><div>86%</div><div></div><div>6%</div><div>7%</div></div>
2	H	329	<div><div></div><div>59%</div><div></div><div>9%</div><div>32%</div></div>
3	I	1342	<div><div></div><div>90%</div><div></div><div>10%</div></div>
4	J	1415	<div><div></div><div>6%</div><div></div><div>82%</div><div>13%</div><div>5%</div></div>
5	K	91	<div><div></div><div>7%</div><div></div><div>82%</div><div>13%</div></div>
6	M	477	<div><div></div><div>5%</div><div></div><div>83%</div><div>12%</div><div>5%</div></div>
7	U	90	<div><div></div><div>20%</div><div>18%</div><div>62%</div></div>
8	V	90	<div><div></div><div>23%</div><div>14%</div><div>62%</div></div>

2 Entry composition

There are 14 unique types of molecules in this entry. The entry contains 42869 atoms, of which 0 are hydrogens and 0 are deuteriums.

In the tables below, the AltConf column contains the number of residues with at least one atom in alternate conformation and the Trace column contains the number of residues modelled with at most 2 atoms.

- Molecule 1 is a protein called Transcriptional regulator (NtrC family).

Mol	Chain	Residues	Atoms					AltConf	Trace
1	A	247	Total 1979	C 1278	N 333	O 364	S 4	0	0
1	B	247	Total 1979	C 1278	N 333	O 364	S 4	0	0
1	C	247	Total 1979	C 1278	N 333	O 364	S 4	0	0
1	D	247	Total 1979	C 1278	N 333	O 364	S 4	0	0
1	E	247	Total 1979	C 1278	N 333	O 364	S 4	0	0
1	F	246	Total 1964	C 1270	N 329	O 361	S 4	0	0

There are 6 discrepancies between the modelled and reference sequences:

Chain	Residue	Modelled	Actual	Comment	Reference
A	120	MET	-	initiating methionine	UNP O67198
B	120	MET	-	initiating methionine	UNP O67198
C	120	MET	-	initiating methionine	UNP O67198
D	120	MET	-	initiating methionine	UNP O67198
E	120	MET	-	initiating methionine	UNP O67198
F	120	MET	-	initiating methionine	UNP O67198

- Molecule 2 is a protein called DNA-directed RNA polymerase subunit alpha.

Mol	Chain	Residues	Atoms					AltConf	Trace
2	G	306	Total 2368	C 1484	N 415	O 461	S 8	0	0
2	H	223	Total 1718	C 1074	N 302	O 336	S 6	0	0

- Molecule 3 is a protein called DNA-directed RNA polymerase subunit beta.

Mol	Chain	Residues	Atoms					AltConf	Trace
3	I	1340	Total	C	N	O	S	0	0
			10567	6631	1841	2052	43		

- Molecule 4 is a protein called DNA-directed RNA polymerase subunit beta'.

Mol	Chain	Residues	Atoms					AltConf	Trace
4	J	1351	Total	C	N	O	S	0	0
			10513	6608	1872	1982	51		

There are 8 discrepancies between the modelled and reference sequences:

Chain	Residue	Modelled	Actual	Comment	Reference
J	1408	LEU	-	expression tag	UNP P0A8T8
J	1409	GLU	-	expression tag	UNP P0A8T8
J	1410	LEU	-	expression tag	UNP P0A8T8
J	1411	GLU	-	expression tag	UNP P0A8T8
J	1412	VAL	-	expression tag	UNP P0A8T8
J	1413	LEU	-	expression tag	UNP P0A8T8
J	1414	PHE	-	expression tag	UNP P0A8T8
J	1415	GLN	-	expression tag	UNP P0A8T8

- Molecule 5 is a protein called DNA-directed RNA polymerase subunit omega.

Mol	Chain	Residues	Atoms					AltConf	Trace
5	K	79	Total	C	N	O	S	0	0
			627	382	118	126	1		

- Molecule 6 is a protein called RNA polymerase sigma-54 factor.

Mol	Chain	Residues	Atoms					AltConf	Trace
6	M	455	Total	C	N	O	S	0	0
			3599	2246	615	726	12		

- Molecule 7 is a DNA chain called dhsU (-60 to +30) non-template strand.

Mol	Chain	Residues	Atoms					AltConf	Trace
7	U	34	Total	C	N	O	P	0	0
			701	334	140	193	34		

There are 3 discrepancies between the modelled and reference sequences:

Chain	Residue	Modelled	Actual	Comment	Reference
U	1	DC	-	expression tag	GB 6626248
U	2	DG	-	expression tag	GB 6626248
U	90	DG	-	expression tag	GB 6626248

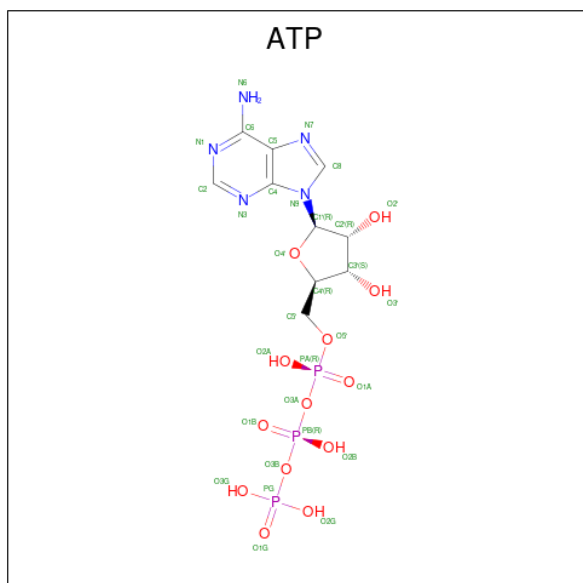
- Molecule 8 is a DNA chain called dhsU (-60 to +30) template strand.

Mol	Chain	Residues	Atoms					AltConf	Trace
8	V	34	Total	C	N	O	P	0	0
			693	335	109	215	34		

There are 3 discrepancies between the modelled and reference sequences:

Chain	Residue	Modelled	Actual	Comment	Reference
V	1	DC	-	expression tag	GB 6626248
V	89	DC	-	expression tag	GB 6626248
V	90	DG	-	expression tag	GB 6626248

- Molecule 9 is ADENOSINE-5'-TRIPHOSPHATE (CCD ID: ATP) (formula: $C_{10}H_{16}N_5O_{13}P_3$).



Mol	Chain	Residues	Atoms					AltConf
9	A	1	Total	C	N	O	P	0
			31	10	5	13	3	
9	B	1	Total	C	N	O	P	0
			31	10	5	13	3	
9	C	1	Total	C	N	O	P	0
			31	10	5	13	3	

Continued on next page...

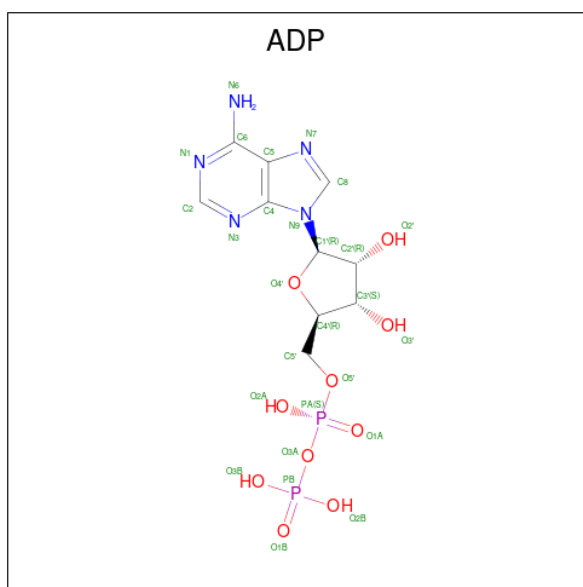
Continued from previous page...

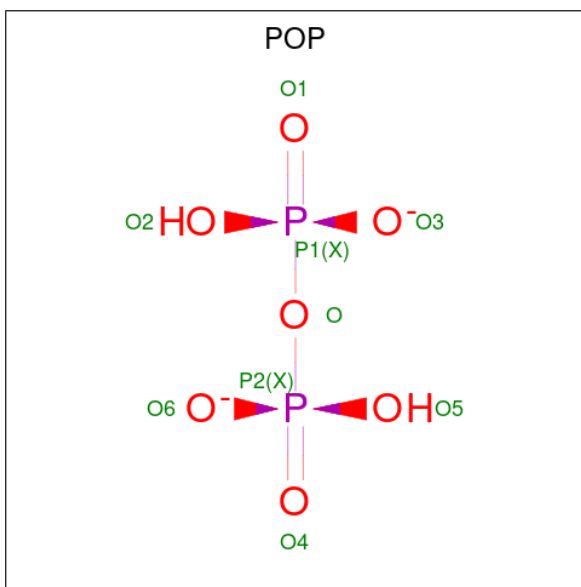
Mol	Chain	Residues	Atoms					AltConf
9	D	1	Total	C	N	O	P	0
			31	10	5	13	3	
9	F	1	Total	C	N	O	P	0
			31	10	5	13	3	

- Molecule 10 is MAGNESIUM ION (CCD ID: MG) (formula: Mg).

Mol	Chain	Residues	Atoms		AltConf
10	A	1	Total	Mg	0
			1	1	
10	J	1	Total	Mg	0
			1	1	

- Molecule 11 is ADENOSINE-5'-DIPHOSPHATE (CCD ID: ADP) (formula: C₁₀H₁₅N₅O₁₀P₂).





Mol	Chain	Residues	Atoms			AltConf
12	J	1	Total	O	P	0
			9	7	2	

- Molecule 13 is ZINC ION (CCD ID: ZN) (formula: Zn).

Mol	Chain	Residues	Atoms		AltConf
13	J	2	Total	Zn	0
			2	2	

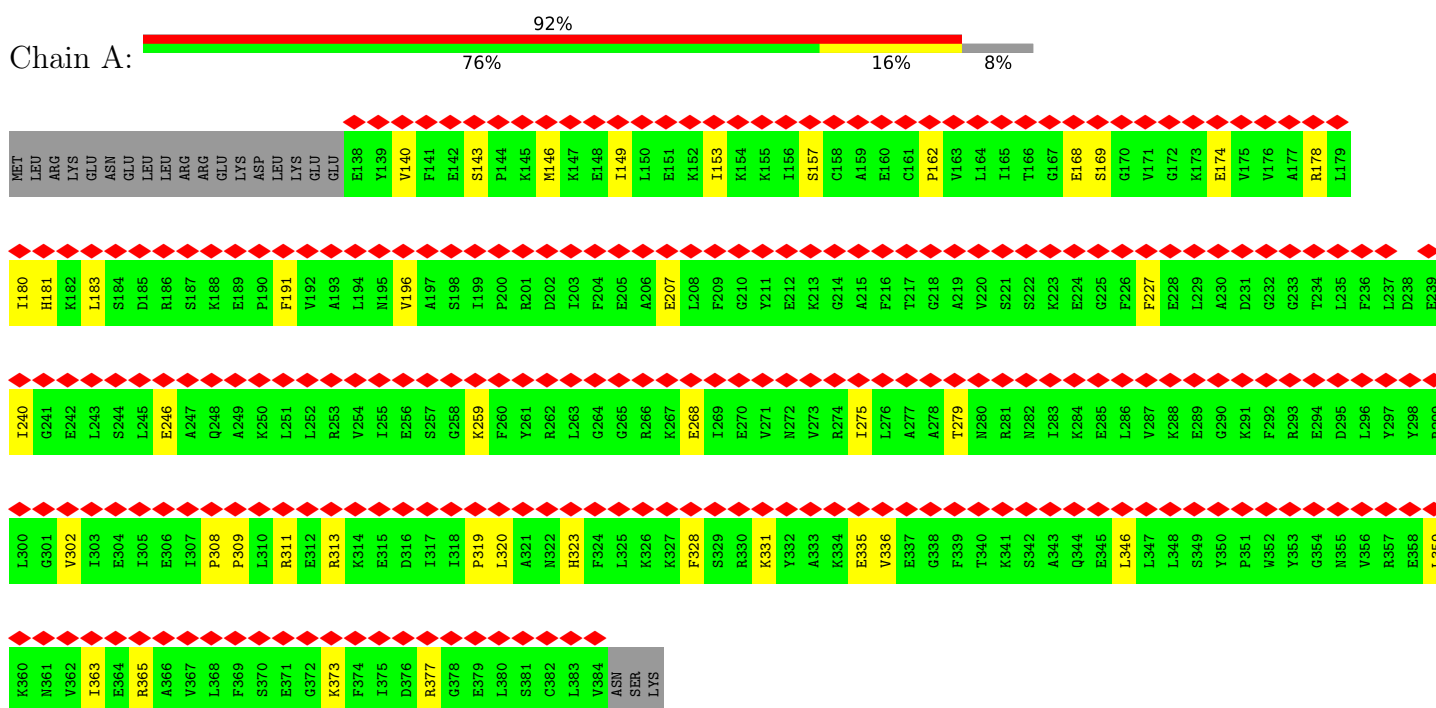
- Molecule 14 is water.

Mol	Chain	Residues	Atoms		AltConf
14	I	19	Total	O	0
			19	19	
14	J	10	Total	O	0
			10	10	

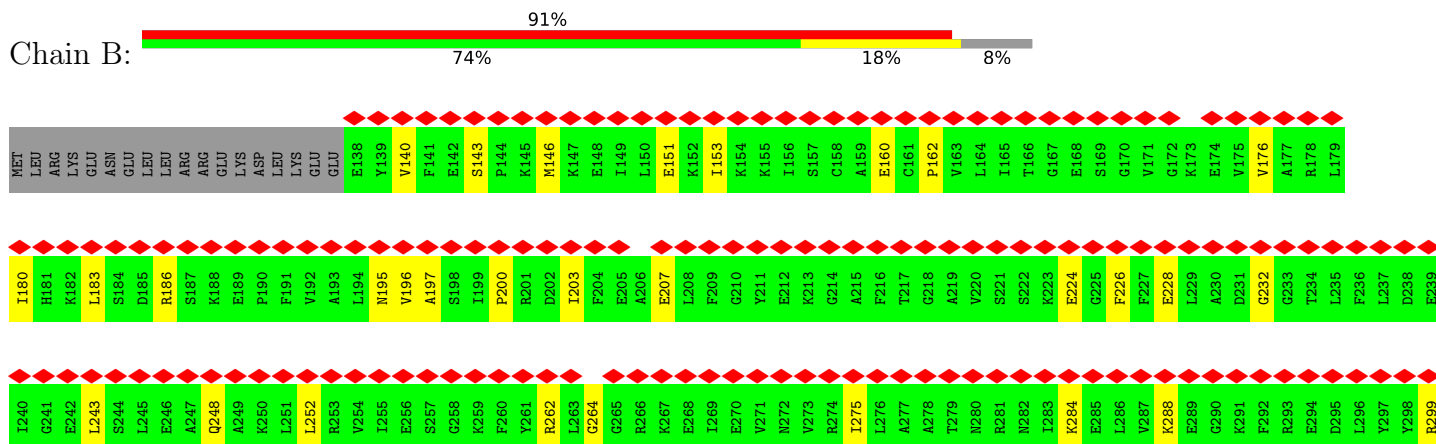
3 Residue-property plots

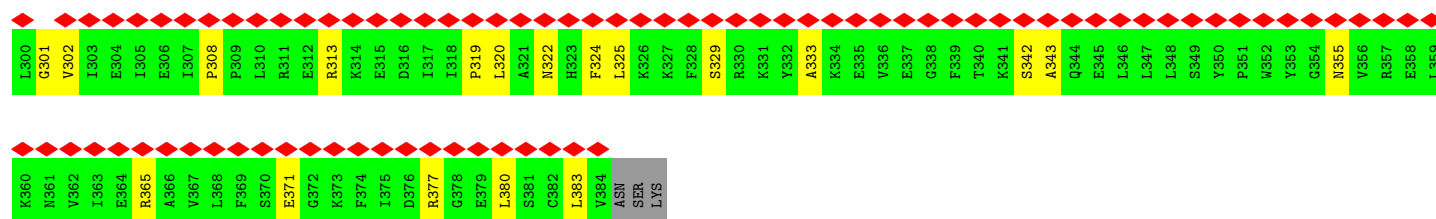
These plots are drawn for all protein, RNA, DNA and oligosaccharide chains in the entry. The first graphic for a chain summarises the proportions of the various outlier classes displayed in the second graphic. The second graphic shows the sequence view annotated by issues in geometry and atom inclusion in map density. Residues are color-coded according to the number of geometric quality criteria for which they contain at least one outlier: green = 0, yellow = 1, orange = 2 and red = 3 or more. A red diamond above a residue indicates a poor fit to the EM map for this residue (all-atom inclusion < 40%). Stretches of 2 or more consecutive residues without any outlier are shown as a green connector. Residues present in the sample, but not in the model, are shown in grey.

- Molecule 1: Transcriptional regulator (NtrC family)

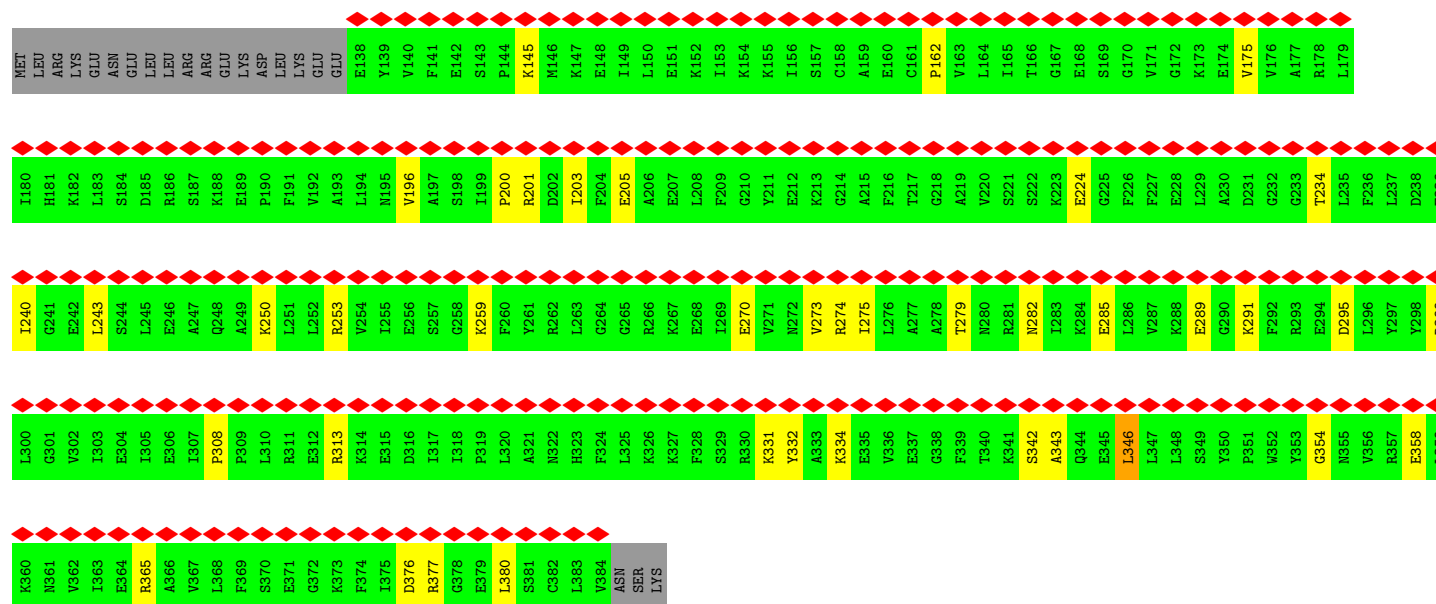
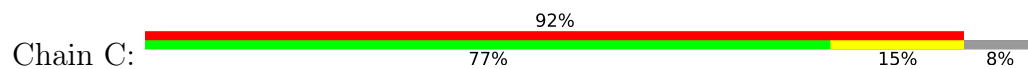


- Molecule 1: Transcriptional regulator (NtrC family)

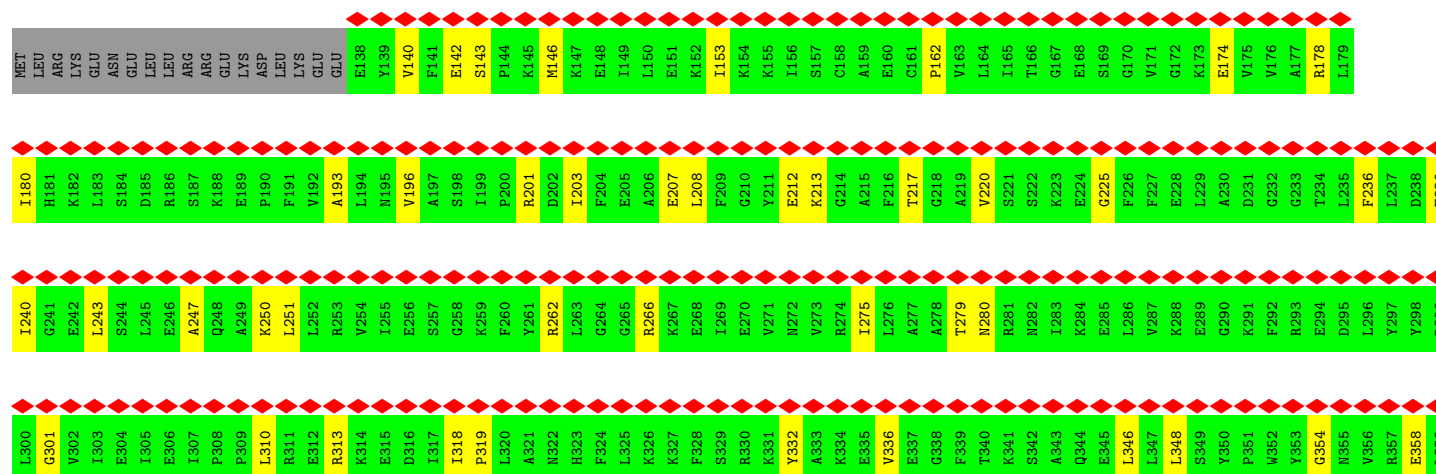
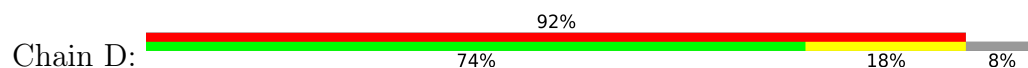


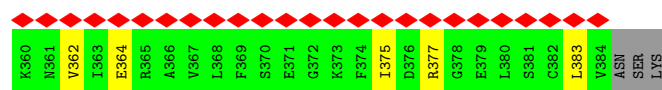


- Molecule 1: Transcriptional regulator (NtrC family)

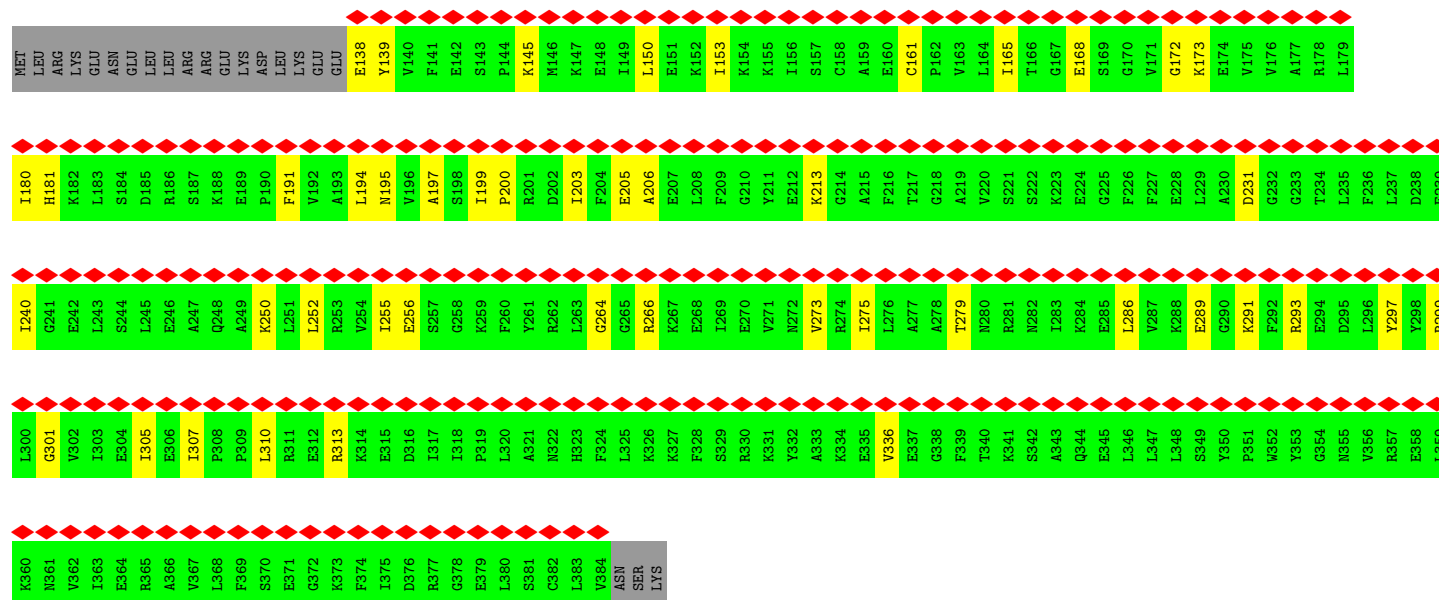
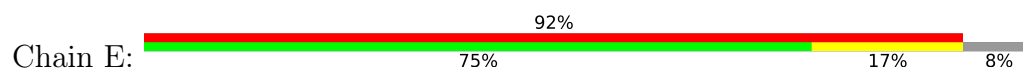


- Molecule 1: Transcriptional regulator (NtrC family)

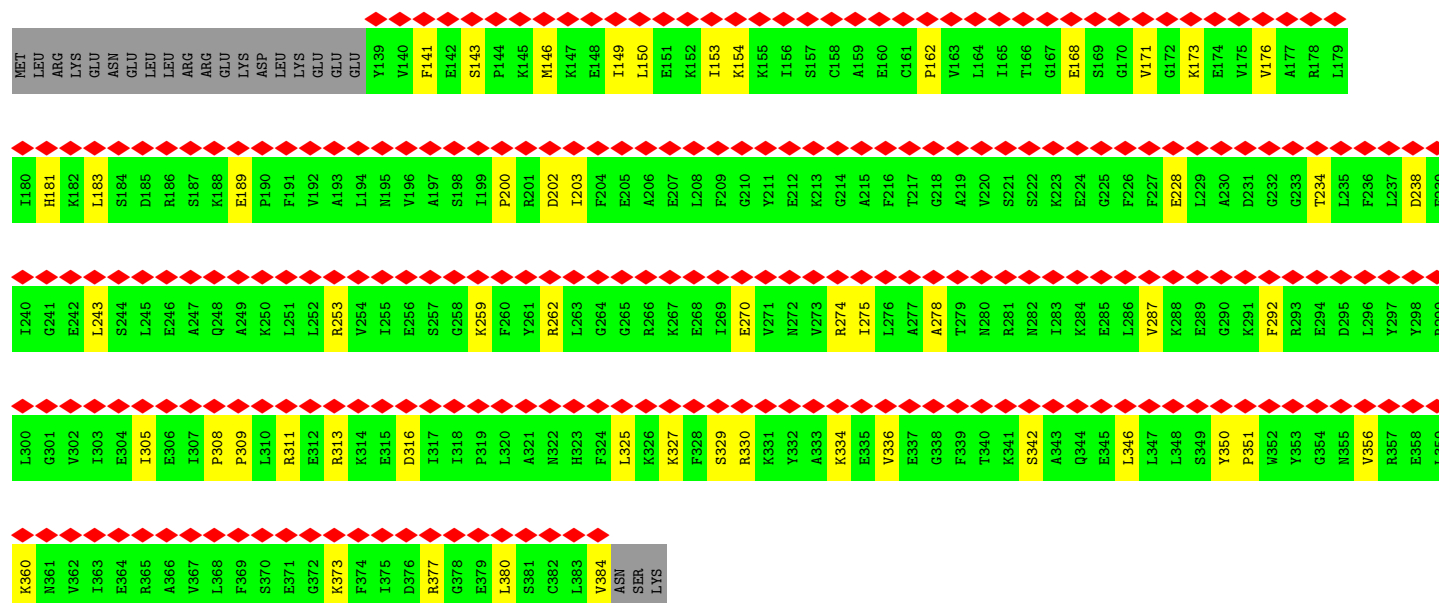
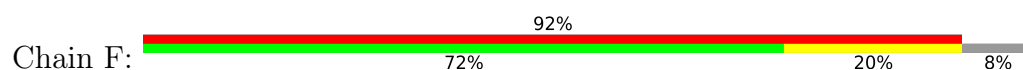




- Molecule 1: Transcriptional regulator (NtrC family)



- Molecule 1: Transcriptional regulator (NtrC family)

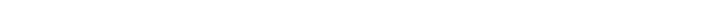


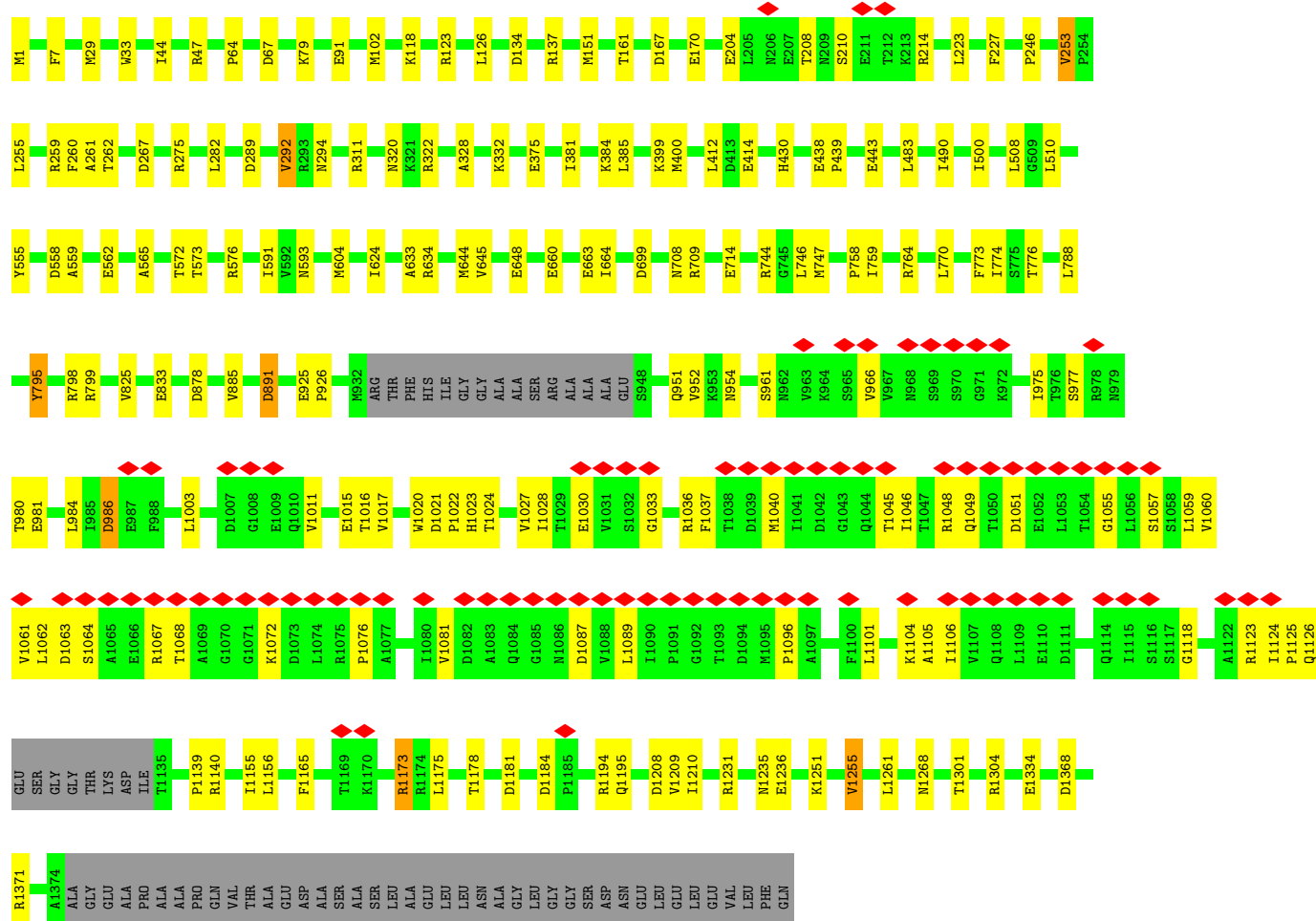
- Molecule 2: DNA-directed RNA polymerase subunit alpha

T285	ME1
E288	GLN
L289	GLY
	S4
	V5
T292	P8
W321	L31
S325	G36
I1E	
ALA	
ASP	V64
GLU	
	L102
	N103
	K104
	V110
	S141
	M142
	R158
	I1E
	HIS
	SER
	GLU
	GLU
	ASP
	R165
	V192
	L198
	D212
	P213
	E214
	E215
	R218
	L228
	D236
	VAL
	ARG
	GLN
	PRO
	GLU
	GLU
	VAL
	LYS
	GLU
	GLU
	LYS
	P247
	D283
	W593

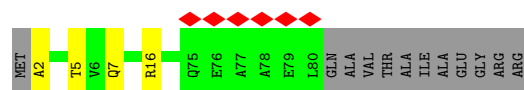
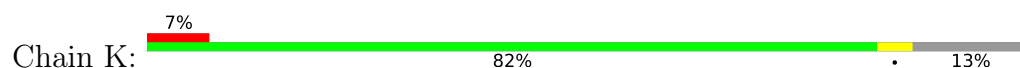
- | | | | | | | | | | | | | | | | | | | | | | | | | | | | | | | | | | | | | | | | | | | | | | | | | | |
|------|------|------|------|-----|-----|-----|-----|-----|-----|-----|-----|-----|-----|-----|-----|-----|-----|------|------|------|------|------|------|-----|-----|-----|-----|-----|-----|------|------|------|------|------|------|------|------|------|------|-----|-----|-----|-----|-----|-----|-----|-----|-----|-----|
| VAL | GLU | LEU | LEU | LYS | THR | PRO | THR | LYS | LYS | SER | LEU | THR | GLU | ILE | LYS | ASP | VAL | LEU | ALA | ALA | SER | GLY | ARG | SER | GLY | ARG | THR | PRO | PRO | TRP | ASN | ASP | ILE | SER | ALA | ALA | ASP | GLU | | | | | | | | | | | |
| L198 | G209 | L224 | L253 | LEU | ASP | VAL | ARG | GLN | PRO | GLU | VAL | LYS | GLU | GLU | LYS | GLU | GLY | LEU | PRO | ASP | THR | PRO | VAL | ASP | LEU | GLU | THR | VAL | ARG | SER | ALA | ASN | CYS | LEU | LYS | ALA | GLU | ALA | ILE | TYR | ILE | GLY | ASP | LEU | VAL | GLN | ARG | THR | GLU |
| GLY | GLY | S4 | P11 | T22 | L31 | E32 | F35 | I46 | V56 | T57 | E58 | V59 | V64 | S69 | E76 | D77 | E90 | D118 | G119 | V146 | R150 | R158 | I159 | HIS | SER | GLU | GLU | ASP | ARG | P167 | L171 | L172 | V173 | S178 | P179 | V192 | E193 | T196 | D197 | | | | | | | | | | |

- | Gene | Chromosome | Start (kb) | End (kb) | Strand | Transcript | Feature |
|-------|------------|------------|----------|--------|------------|---------|
| W997 | 1 | 100000 | 100000 | + | S662 | |
| D1004 | 1 | 100000 | 100000 | + | S666 | |
| L1011 | 1 | 100000 | 100000 | + | P698 | |
| L1021 | 1 | 100000 | 100000 | + | R706 | |
| L1029 | 1 | 100000 | 100000 | + | E745 | |
| K1032 | 1 | 100000 | 100000 | + | E793 | |
| I1060 | 1 | 100000 | 100000 | + | N808 | |
| I1082 | 1 | 100000 | 100000 | + | N811 | |
| P1093 | 1 | 100000 | 100000 | + | S815 | |
| L1101 | 1 | 100000 | 100000 | + | T843 | |
| S1105 | 1 | 100000 | 100000 | + | G846 | |
| I1109 | 1 | 100000 | 100000 | + | N856 | |
| E1174 | 1 | 100000 | 100000 | + | T893 | |
| R1177 | 1 | 100000 | 100000 | + | Q894 | |
| V1186 | 1 | 100000 | 100000 | + | L895 | |
| E1194 | 1 | 100000 | 100000 | + | E898 | |
| T1206 | 1 | 100000 | 100000 | + | E899 | |
| R1216 | 1 | 100000 | 100000 | + | K900 | |
| E1219 | 1 | 100000 | 100000 | + | K909 | |
| Y1231 | 1 | 100000 | 100000 | + | V913 | |
| S1247 | 1 | 100000 | 100000 | + | R936 | |
| S1252 | 1 | 100000 | 100000 | + | K954 | |
| E1272 | 1 | 100000 | 100000 | + | Q955 | |
| E1289 | 1 | 100000 | 100000 | + | A956 | |
| D1296 | 1 | 100000 | 100000 | + | K957 | |
| D1297 | 1 | 100000 | 100000 | + | L967 | |
| R1301 | 1 | 100000 | 100000 | + | F972 | |
| N1307 | 1 | 100000 | 100000 | + | L979 | |
| N1312 | 1 | 100000 | 100000 | + | V984 | |
| D1341 | 1 | 100000 | 100000 | + | E985 | |
| GLU | 1 | 100000 | 100000 | + | K988 | |
| | 1 | 100000 | 100000 | + | L989 | |
| | 1 | 100000 | 100000 | + | P993 | |
| | 1 | 100000 | 100000 | + | R994 | |
| | 1 | 100000 | 100000 | + | D995 | |
| | 1 | 100000 | 100000 | + | R996 | |
| | 1 | 100000 | 100000 | + | E825 | |
| | 1 | 100000 | 100000 | + | L633 | |
| | 1 | 100000 | 100000 | + | L644 | |
| | 1 | 100000 | 100000 | + | P645 | |
| | 1 | 100000 | 100000 | + | S646 | |
| | 1 | 100000 | 100000 | + | Q649 | |
| | 1 | 100000 | 100000 | + | R478 | |
| | 1 | 100000 | 100000 | + | L484 | |
| | 1 | 100000 | 100000 | + | M492 | |
| | 1 | 100000 | 100000 | + | S512 | |
| | 1 | 100000 | 100000 | + | Q513 | |
| | 1 | 100000 | 100000 | + | F514 | |
| | 1 | 100000 | 100000 | + | R528 | |
| | 1 | 100000 | 100000 | + | E541 | |
| | 1 | 100000 | 100000 | + | C559 | |
| | 1 | 100000 | 100000 | + | S576 | |
| | 1 | 100000 | 100000 | + | N582 | |
| | 1 | 100000 | 100000 | + | E588 | |
| | 1 | 100000 | 100000 | + | Y591 | |
| | 1 | 100000 | 100000 | + | R592 | |
| | 1 | 100000 | 100000 | + | E611 | |
| | 1 | 100000 | 100000 | + | L325 | |
| | 1 | 100000 | 100000 | + | S326 | |
| | 1 | 100000 | 100000 | + | Q327 | |
| | 1 | 100000 | 100000 | + | F337 | |
| | 1 | | | | | |

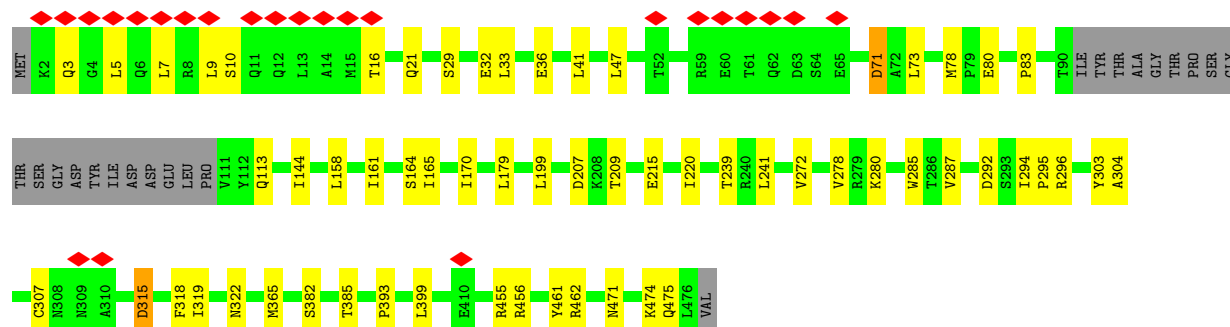
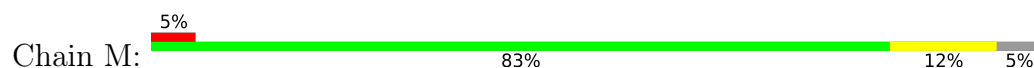
- Chain J:  6% 82% 13% 5%



- Molecule 5: DNA-directed RNA polymerase subunit omega



- Molecule 6: RNA polymerase sigma-54 factor



-
- A horizontal bar chart representing the distribution of 1000 samples across 100 categories. The categories are labeled with codes: DC, DA, DT, DG, T32, T33, G34, T38, T39, A40, C44, A45, C51, G52, C56, A57, G64, G65, DA, DC, DA, DC, DT, DG, DA, DA, DA. The bar is divided into segments of different colors: grey, green, yellow, and light green. A red diamond marker is placed above the T32 segment.

4 Experimental information

Property	Value	Source
EM reconstruction method	SINGLE PARTICLE	Depositor
Imposed symmetry	POINT, Not provided	
Number of particles used	95920	Depositor
Resolution determination method	FSC 0.143 CUT-OFF	Depositor
CTF correction method	PHASE FLIPPING AND AMPLITUDE CORRECTION	Depositor
Microscope	TFS KRIOS	Depositor
Voltage (kV)	300	Depositor
Electron dose ($e^-/\text{\AA}^2$)	42	Depositor
Minimum defocus (nm)	800	Depositor
Maximum defocus (nm)	2200	Depositor
Magnification	Not provided	
Image detector	GATAN K3 BIOQUANTUM (6k x 4k)	Depositor
Maximum map value	0.798	Depositor
Minimum map value	-0.308	Depositor
Average map value	0.001	Depositor
Map value standard deviation	0.021	Depositor
Recommended contour level	0.12	Depositor
Map size (Å)	385.28, 385.28, 385.28	wwPDB
Map dimensions	448, 448, 448	wwPDB
Map angles (°)	90.0, 90.0, 90.0	wwPDB
Pixel spacing (Å)	0.86, 0.86, 0.86	Depositor

5 Model quality

5.1 Standard geometry

Bond lengths and bond angles in the following residue types are not validated in this section: ADP, ZN, MG, POP, ATP

The Z score for a bond length (or angle) is the number of standard deviations the observed value is removed from the expected value. A bond length (or angle) with $|Z| > 5$ is considered an outlier worth inspection. RMSZ is the root-mean-square of all Z scores of the bond lengths (or angles).

Mol	Chain	Bond lengths		Bond angles	
		RMSZ	# Z >5	RMSZ	# Z >5
1	A	0.08	0/2013	0.21	0/2700
1	B	0.08	0/2013	0.25	1/2700 (0.0%)
1	C	0.07	0/2013	0.21	0/2700
1	D	0.07	0/2013	0.21	0/2700
1	E	0.09	0/2013	0.27	0/2700
1	F	0.07	0/1998	0.21	0/2681
2	G	0.11	0/2398	0.29	0/3250
2	H	0.11	0/1738	0.27	0/2355
3	I	0.13	0/10736	0.27	0/14487
4	J	0.12	0/10671	0.28	0/14404
5	K	0.10	0/629	0.20	0/847
6	M	0.10	0/3654	0.24	0/4960
7	U	0.16	0/790	0.31	0/1216
8	V	0.16	0/772	0.38	0/1190
All	All	0.11	0/43451	0.26	1/58890 (0.0%)

There are no bond length outliers.

All (1) bond angle outliers are listed below:

Mol	Chain	Res	Type	Atoms	Z	Observed(°)	Ideal(°)
1	B	355	ASN	CB-CA-C	-5.50	110.25	116.63

There are no chirality outliers.

There are no planarity outliers.

5.2 Too-close contacts

In the following table, the Non-H and H(model) columns list the number of non-hydrogen atoms and hydrogen atoms in the chain respectively. The H(added) column lists the number of hydrogen

atoms added and optimized by MolProbity. The Clashes column lists the number of clashes within the asymmetric unit, whereas Symm-Clashes lists symmetry-related clashes.

Mol	Chain	Non-H	H(model)	H(added)	Clashes	Symm-Clashes
1	A	1979	0	2040	22	0
1	B	1979	0	2040	29	0
1	C	1979	0	2040	27	0
1	D	1979	0	2040	29	0
1	E	1979	0	2040	28	0
1	F	1964	0	2023	33	0
2	G	2368	0	2422	12	0
2	H	1718	0	1756	17	0
3	I	10567	0	10585	74	0
4	J	10513	0	10752	113	0
5	K	627	0	634	3	0
6	M	3599	0	3543	41	0
7	U	701	0	381	11	0
8	V	693	0	392	10	0
9	A	31	0	12	0	0
9	B	31	0	12	0	0
9	C	31	0	12	1	0
9	D	31	0	12	0	0
9	F	31	0	12	2	0
10	A	1	0	0	0	0
10	J	1	0	0	0	0
11	E	27	0	12	1	0
12	J	9	0	0	0	0
13	J	2	0	0	0	0
14	I	19	0	0	1	0
14	J	10	0	0	0	0
All	All	42869	0	42760	408	0

The all-atom clashscore is defined as the number of clashes found per 1000 atoms (including hydrogen atoms). The all-atom clashscore for this structure is 5.

All (408) close contacts within the same asymmetric unit are listed below, sorted by their clash magnitude.

Atom-1	Atom-2	Interatomic distance (Å)	Clash overlap (Å)
4:J:1033:GLY:HA3	4:J:1081:VAL:O	1.72	0.90
4:J:1089:LEU:HA	4:J:1096:PRO:HA	1.71	0.71
4:J:891:ASP:OD1	4:J:891:ASP:N	2.26	0.69
4:J:1051:ASP:HB2	4:J:1055:GLY:H	1.59	0.67
1:A:365:ARG:NE	1:B:302:VAL:O	2.27	0.66

Continued on next page...

Continued from previous page...

Atom-1	Atom-2	Interatomic distance (Å)	Clash overlap (Å)
1:F:149:ILE:HD11	1:F:308:PRO:HD2	1.77	0.66
8:V:51:DC:H2'	8:V:52:DG:C8	2.31	0.65
3:I:541:GLU:HG2	6:M:80:GLU:HA	1.78	0.65
4:J:384:LYS:NZ	4:J:414:GLU:OE1	2.30	0.65
4:J:255:LEU:HB2	4:J:259:ARG:HG3	1.79	0.64
1:E:206:ALA:HB2	6:M:5:LEU:HD11	1.80	0.64
4:J:510:LEU:HD11	4:J:624:ILE:HG23	1.81	0.63
1:D:346:LEU:HD22	1:D:377:ARG:HG3	1.81	0.62
3:I:241:LEU:HD21	3:I:246:LEU:HD11	1.81	0.62
1:E:255:ILE:HD12	1:E:275:ILE:HG13	1.80	0.62
1:D:225:GLY:HA2	1:E:266:ARG:HH21	1.64	0.62
1:D:318:ILE:HG12	1:D:348:LEU:HD21	1.80	0.62
1:E:195:ASN:OD1	1:F:253:ARG:NH1	2.33	0.62
4:J:825:VAL:HB	4:J:833:GLU:HB2	1.81	0.62
6:M:41:LEU:HD23	6:M:47:LEU:HB3	1.81	0.62
4:J:1037:PHE:HB3	4:J:1040:MET:HB2	1.83	0.61
1:C:342:SER:HB2	1:C:377:ARG:HD2	1.83	0.61
4:J:1048:ARG:NH2	4:J:1057:SER:OG	2.34	0.61
1:A:140:VAL:HG11	1:A:319:PRO:HB2	1.83	0.60
1:C:240:ILE:HG22	1:C:279:THR:HB	1.84	0.60
1:E:172:GLY:HA2	11:E:401:ADP:H5'1	1.83	0.60
1:F:234:THR:HG22	1:F:274:ARG:HB3	1.82	0.60
4:J:134:ASP:OD1	4:J:137:ARG:NH2	2.35	0.60
1:B:153:ILE:HD11	1:B:176:VAL:HG13	1.82	0.60
1:D:143:SER:HB3	1:D:146:MET:HG2	1.82	0.60
3:I:106:GLU:HG3	3:I:115:LYS:HB2	1.82	0.60
2:G:212:ASP:HB3	2:G:215:GLU:HG2	1.83	0.59
2:H:64:VAL:HG13	2:H:69:SER:HB2	1.84	0.59
3:I:21:VAL:HG21	3:I:592:ARG:HD3	1.84	0.59
6:M:318:PHE:O	6:M:322:ASN:ND2	2.33	0.59
1:C:289:GLU:OE1	1:C:291:LYS:NZ	2.32	0.59
1:B:365:ARG:HE	1:B:383:LEU:HD13	1.68	0.59
4:J:289:ASP:HA	4:J:292:VAL:HG22	1.85	0.59
4:J:708:ASN:ND2	4:J:714:GLU:OE2	2.36	0.59
3:I:444:ASP:O	3:I:450:ASN:ND2	2.33	0.59
4:J:1268:ASN:OD1	4:J:1301:THR:OG1	2.19	0.59
1:D:217:THR:HG21	6:M:10:SER:HB2	1.84	0.58
2:H:158:ARG:NH2	2:H:173:VAL:O	2.35	0.58
3:I:989:LEU:O	3:I:997:TRP:NE1	2.37	0.58
5:K:5:THR:HG22	5:K:7:GLN:H	1.68	0.58
3:I:289:VAL:HG23	3:I:322:LEU:HD12	1.86	0.58

Continued on next page...

Continued from previous page...

Atom-1	Atom-2	Interatomic distance (Å)	Clash overlap (Å)
3:I:103:VAL:HG12	3:I:117:ILE:HG22	1.86	0.58
3:I:856:ASN:N	3:I:856:ASN:OD1	2.36	0.58
1:F:168:GLU:O	1:F:173:LYS:NZ	2.37	0.57
4:J:1126:GLN:O	4:J:1195:GLN:NE2	2.37	0.57
3:I:158:ASP:OD1	3:I:159:SER:N	2.36	0.57
4:J:1037:PHE:HE2	4:J:1059:LEU:HB2	1.67	0.57
7:U:39:DC:H2'	7:U:40:DG:C8	2.39	0.57
4:J:1024:THR:HA	4:J:1125:PRO:HA	1.86	0.57
1:B:162:PRO:HA	1:B:275:ILE:O	2.04	0.57
4:J:952:VAL:HG12	4:J:1015:GLU:H	1.70	0.57
4:J:47:ARG:NH2	6:M:29:SER:OG	2.35	0.57
4:J:1028:ILE:HB	4:J:1118:GLY:HA2	1.86	0.57
6:M:304:ALA:HA	6:M:319:ILE:HD11	1.85	0.57
1:E:310:LEU:HD12	1:E:313:ARG:HB2	1.86	0.57
1:C:145:LYS:HE3	1:C:308:PRO:HG3	1.85	0.57
1:E:168:GLU:O	1:E:173:LYS:NZ	2.38	0.57
1:F:143:SER:HB3	1:F:146:MET:HG2	1.86	0.56
1:C:365:ARG:NH2	1:D:301:GLY:O	2.37	0.56
1:D:212:GLU:OE1	1:D:262:ARG:NH2	2.36	0.56
3:I:985:GLU:HB3	3:I:988:LYS:HB2	1.87	0.56
4:J:490:ILE:HD12	4:J:500:ILE:HD13	1.87	0.56
4:J:151:MET:N	4:J:151:MET:SD	2.78	0.56
4:J:1020:TRP:HD1	4:J:1022:PRO:HD3	1.69	0.56
1:E:297:TYR:O	1:E:301:GLY:N	2.33	0.56
1:F:162:PRO:HB3	1:F:275:ILE:HB	1.86	0.56
4:J:954:ASN:HB2	4:J:984:LEU:HD21	1.88	0.56
3:I:300:ASP:HB3	3:I:309:LEU:HD11	1.87	0.56
3:I:318:SER:OG	3:I:320:ASP:OD1	2.21	0.56
1:E:194:LEU:HD21	1:E:199:ILE:HD11	1.87	0.55
1:A:365:ARG:NH2	1:B:301:GLY:O	2.38	0.55
1:F:200:PRO:HB2	1:F:203:ILE:HG12	1.88	0.55
3:I:1252:SER:OG	6:M:113:GLN:OE1	2.24	0.55
1:D:240:ILE:HG22	1:D:279:THR:HB	1.87	0.55
4:J:961:SER:HB2	4:J:981:GLU:HB3	1.87	0.55
1:B:308:PRO:HG2	1:B:313:ARG:HD2	1.89	0.55
1:F:141:PHE:HB3	1:F:146:MET:HB3	1.89	0.55
3:I:143:ARG:NH1	3:I:512:SER:OG	2.40	0.55
1:E:197:ALA:HB3	1:F:253:ARG:HH12	1.72	0.54
1:A:336:VAL:HA	1:A:373:LYS:HA	1.89	0.54
6:M:382:SER:OG	7:U:45:DT:OP2	2.15	0.54
3:I:192:ASP:OD2	3:I:436:ARG:NH2	2.41	0.54

Continued on next page...

Continued from previous page...

Atom-1	Atom-2	Interatomic distance (Å)	Clash overlap (Å)
3:I:895:LEU:HD12	3:I:900:LYS:HG2	1.88	0.54
6:M:144:ILE:HG12	6:M:161:ILE:HD13	1.89	0.54
1:E:310:LEU:HA	1:E:313:ARG:HD3	1.89	0.54
1:F:259:LYS:HE3	1:F:270:GLU:HB2	1.89	0.54
3:I:1219:GLU:OE1	4:J:634:ARG:NH2	2.40	0.54
4:J:961:SER:O	4:J:980:THR:HA	2.08	0.54
4:J:1061:VAL:HB	4:J:1105:ALA:HB3	1.90	0.54
4:J:1081:VAL:HG12	4:J:1087:ASP:HA	1.89	0.54
1:B:200:PRO:HB2	1:B:203:ILE:HG12	1.90	0.53
3:I:633:LEU:HB3	3:I:644:LEU:HD22	1.91	0.53
1:D:239:GLU:OE1	1:D:280:ASN:ND2	2.41	0.53
1:C:205:GLU:HG3	1:C:250:LYS:HD3	1.91	0.53
4:J:747:MET:HE3	4:J:759:ILE:HD12	1.90	0.53
1:B:342:SER:OG	1:B:377:ARG:NH1	2.36	0.53
1:F:238:ASP:HA	1:F:278:ALA:HB3	1.90	0.53
6:M:471:ASN:O	6:M:474:LYS:NZ	2.42	0.53
2:H:57:THR:HG23	2:H:158:ARG:HH12	1.74	0.53
3:I:17:LYS:NZ	3:I:1194:GLU:OE2	2.38	0.53
3:I:102:LEU:HB3	3:I:118:LYS:HG3	1.91	0.53
2:G:31:LEU:HD13	2:G:36:GLY:HA2	1.89	0.53
1:E:252:LEU:O	1:E:299:ARG:NE	2.33	0.52
2:G:5:VAL:O	2:H:150:ARG:NE	2.34	0.52
4:J:977:SER:OG	4:J:980:THR:OG1	2.27	0.52
6:M:307:CYS:HB2	6:M:319:ILE:HD13	1.91	0.52
1:A:162:PRO:HA	1:A:275:ILE:O	2.10	0.52
3:I:1272:GLU:OE1	4:J:798:ARG:NH1	2.38	0.52
6:M:461:TYR:OH	8:V:52:DG:OP1	2.22	0.52
3:I:55:SER:OG	3:I:465:ARG:NH1	2.43	0.52
1:A:240:ILE:HG22	1:A:279:THR:HB	1.92	0.52
1:D:217:THR:OG1	6:M:10:SER:N	2.39	0.52
2:G:289:LEU:O	2:G:292:THR:OG1	2.27	0.52
1:C:376:ASP:OD1	1:C:377:ARG:N	2.41	0.52
3:I:176:ILE:HD11	3:I:428:VAL:HG21	1.92	0.51
3:I:257:ALA:HB3	3:I:262:TYR:HE2	1.75	0.51
4:J:1011:VAL:HG11	4:J:1017:VAL:HG11	1.92	0.51
4:J:1040:MET:HE2	4:J:1076:PRO:HB2	1.92	0.51
1:C:346:LEU:HD12	1:C:377:ARG:HG3	1.92	0.51
1:D:310:LEU:HD12	1:D:313:ARG:HB2	1.93	0.51
1:A:174:GLU:OE2	1:A:178:ARG:NH1	2.43	0.51
1:E:165:ILE:HG12	1:E:305:ILE:HB	1.92	0.51
3:I:591:TYR:OH	3:I:611:GLU:OE2	2.26	0.51

Continued on next page...

Continued from previous page...

Atom-1	Atom-2	Interatomic distance (Å)	Clash overlap (Å)
1:B:160:GLU:OE2	1:B:186:ARG:NH2	2.43	0.51
1:C:259:LYS:HE2	1:C:270:GLU:HB2	1.92	0.51
2:H:46:ILE:HD11	2:H:224:LEU:HD13	1.93	0.51
3:I:233:ARG:HD3	3:I:238:GLN:HB2	1.93	0.51
4:J:558:ASP:OD1	4:J:559:ALA:N	2.40	0.51
4:J:1060:VAL:HG13	4:J:1106:ILE:HA	1.93	0.50
1:D:196:VAL:HB	1:D:243:LEU:HD13	1.94	0.50
3:I:936:ARG:NH2	6:M:393:PRO:O	2.44	0.50
3:I:1109:ILE:HD12	4:J:644:MET:HE1	1.93	0.50
4:J:1181:ASP:OD1	4:J:1181:ASP:N	2.44	0.50
1:F:309:PRO:HG2	1:F:311:ARG:HG2	1.94	0.50
4:J:381:ILE:HD11	4:J:412:LEU:HD13	1.91	0.50
4:J:648:GLU:OE1	4:J:648:GLU:N	2.39	0.50
1:C:331:LYS:HD2	1:C:332:TYR:CZ	2.47	0.50
7:U:55:DT:H2''	7:U:56:DA:C8	2.47	0.50
8:V:44:DC:H2''	8:V:45:DA:C8	2.47	0.50
7:U:57:DC:H2''	7:U:58:DA:C8	2.47	0.50
1:E:200:PRO:HB2	1:E:203:ILE:HG12	1.93	0.50
4:J:951:GLN:OE1	4:J:1016:THR:OG1	2.29	0.50
1:C:200:PRO:HB2	1:C:203:ILE:HG12	1.94	0.49
4:J:660:GLU:O	4:J:663:GLU:HG3	2.12	0.49
8:V:51:DC:H2'	8:V:52:DG:H8	1.77	0.49
2:G:104:LYS:HG2	2:G:110:VAL:HG22	1.94	0.49
4:J:79:LYS:HB3	6:M:164:SER:HB3	1.94	0.49
4:J:795:TYR:CD2	6:M:83:PRO:HG3	2.48	0.49
4:J:1036:ARG:NH2	4:J:1087:ASP:OD1	2.44	0.49
1:B:153:ILE:HG22	1:B:183:LEU:HD12	1.94	0.49
1:F:154:LYS:HG2	1:F:183:LEU:HD13	1.93	0.49
3:I:909:LYS:HE2	3:I:913:VAL:HG21	1.94	0.49
4:J:878:ASP:OD1	4:J:878:ASP:N	2.46	0.49
1:A:153:ILE:HG23	1:A:180:ILE:HG12	1.93	0.49
1:A:207:GLU:OE2	1:B:264:GLY:N	2.45	0.49
2:G:192:VAL:HG11	2:G:198:LEU:HD12	1.93	0.49
4:J:1165:PHE:HD1	4:J:1173:ARG:HH22	1.58	0.49
5:K:2:ALA:N	5:K:5:THR:O	2.45	0.49
4:J:788:LEU:HD13	6:M:78:MET:HG2	1.94	0.49
3:I:993:PRO:HG2	3:I:996:ARG:HG2	1.95	0.49
4:J:1021:ASP:OD1	4:J:1023:HIS:ND1	2.46	0.49
1:B:162:PRO:HB3	1:B:275:ILE:HB	1.95	0.48
1:B:197:ALA:O	1:C:250:LYS:NZ	2.37	0.48
1:E:240:ILE:HG22	1:E:279:THR:HB	1.95	0.48

Continued on next page...

Continued from previous page...

Atom-1	Atom-2	Interatomic distance (Å)	Clash overlap (Å)
1:E:252:LEU:HD11	1:E:293:ARG:HE	1.78	0.48
3:I:228:VAL:HG23	3:I:337:PHE:HB2	1.94	0.48
4:J:1:MET:HB3	4:J:7:PHE:HB2	1.95	0.48
6:M:207:ASP:OD2	6:M:209:THR:OG1	2.29	0.48
1:D:203:ILE:HG22	6:M:7:LEU:HG	1.95	0.48
4:J:118:LYS:HB3	4:J:311:ARG:HD3	1.95	0.48
4:J:1045:THR:HA	4:J:1067:ARG:HD3	1.95	0.48
4:J:1106:ILE:HB	4:J:1123:ARG:HB2	1.95	0.48
1:B:196:VAL:HB	1:B:243:LEU:HD13	1.95	0.48
3:I:198:ILE:HD12	3:I:369:MET:HE1	1.95	0.48
2:H:59:VAL:HG12	2:H:171:LEU:HB2	1.96	0.48
3:I:1174:GLU:OE2	3:I:1177:ARG:NH1	2.36	0.48
4:J:253:VAL:HG13	4:J:261:ALA:HB3	1.95	0.48
2:H:118:ASP:OD1	2:H:119:GLY:N	2.45	0.48
3:I:138:ILE:HB	3:I:143:ARG:HD2	1.96	0.48
1:B:153:ILE:HG23	1:B:180:ILE:HG12	1.96	0.48
1:A:309:PRO:HB2	1:A:311:ARG:HG2	1.96	0.48
4:J:1251:LYS:O	4:J:1255:VAL:HG13	2.14	0.48
2:H:56:VAL:HG22	2:H:146:VAL:HG12	1.96	0.48
8:V:39:DT:H2"	8:V:40:DA:C8	2.49	0.48
1:C:282:ASN:HB3	1:C:285:GLU:HG2	1.96	0.47
1:C:332:TYR:HB2	1:C:334:LYS:HD3	1.96	0.47
7:U:52:DA:H2"	7:U:53:DA:C8	2.49	0.47
1:B:228:GLU:CD	1:B:262:ARG:HH21	2.22	0.47
1:F:336:VAL:HA	1:F:373:LYS:HA	1.96	0.47
4:J:167:ASP:HA	4:J:170:GLU:HG2	1.95	0.47
6:M:365:MET:HE3	6:M:365:MET:HB2	1.79	0.47
7:U:34:DT:H2"	7:U:35:DG:C8	2.49	0.47
1:C:162:PRO:HA	1:C:275:ILE:O	2.14	0.47
1:C:354:GLY:HA3	1:C:358:GLU:HB2	1.96	0.47
4:J:1049:GLN:HB2	4:J:1060:VAL:HB	1.96	0.47
1:B:143:SER:HB3	1:B:146:MET:HG2	1.97	0.47
4:J:1261:LEU:O	4:J:1304:ARG:NH2	2.45	0.47
1:A:157:SER:OG	1:A:183:LEU:O	2.29	0.47
1:B:224:GLU:HG2	1:B:262:ARG:HH22	1.78	0.47
6:M:456:ARG:NH2	7:U:36:DG:N7	2.62	0.47
1:B:252:LEU:O	1:B:299:ARG:NE	2.47	0.47
1:C:308:PRO:HG2	1:C:313:ARG:HD2	1.97	0.47
1:D:140:VAL:HG11	1:D:319:PRO:HB2	1.97	0.47
3:I:808:ASN:OD1	3:I:1216:ARG:NH2	2.48	0.47
4:J:1231:ARG:O	4:J:1235:ASN:ND2	2.43	0.47

Continued on next page...

Continued from previous page...

Atom-1	Atom-2	Interatomic distance (Å)	Clash overlap (Å)
8:V:64:DG:H2''	8:V:65:DG:C8	2.49	0.47
1:F:202:ASP:O	6:M:3:GLN:NE2	2.39	0.47
3:I:1307:ASN:HB3	3:I:1312:ASN:O	2.15	0.47
4:J:1156:LEU:HA	4:J:1208:ASP:O	2.15	0.47
1:D:220:VAL:HG21	1:E:213:LYS:HD3	1.97	0.47
4:J:644:MET:O	4:J:764:ARG:NH1	2.38	0.47
6:M:462:ARG:NH2	7:U:35:DG:OP2	2.47	0.47
8:V:33:DT:H2''	8:V:34:DG:C8	2.50	0.47
1:C:343:ALA:HB1	1:C:380:LEU:HD12	1.96	0.47
8:V:39:DT:H2''	8:V:40:DA:H8	1.80	0.47
1:A:259:LYS:HB3	1:A:268:GLU:HG2	1.97	0.46
3:I:1101:LEU:HD11	4:J:508:LEU:HD22	1.97	0.46
3:I:811:ASN:HA	3:I:815:SER:HB2	1.98	0.46
1:E:205:GLU:OE2	1:E:250:LYS:NZ	2.43	0.46
4:J:123:ARG:HH22	4:J:1334:GLU:HG2	1.79	0.46
1:B:320:LEU:HB3	1:B:324:PHE:CE2	2.51	0.46
3:I:528:ARG:NH2	3:I:576:SER:O	2.48	0.46
3:I:698:PRO:HA	3:I:1231:TYR:CE1	2.50	0.46
6:M:280:LYS:HB2	6:M:285:TRP:CZ3	2.51	0.46
1:F:153:ILE:HG12	1:F:176:VAL:HG13	1.96	0.46
2:H:76:GLU:HB3	2:H:80:GLU:HB3	1.97	0.46
4:J:975:ILE:HG22	4:J:977:SER:H	1.81	0.46
1:F:325:LEU:HD21	1:F:336:VAL:HG11	1.97	0.46
4:J:1062:LEU:HB2	4:J:1067:ARG:HB3	1.98	0.46
1:A:143:SER:HB3	1:A:146:MET:HB2	1.97	0.46
1:A:181:HIS:CD2	1:A:191:PHE:HB2	2.51	0.46
1:B:207:GLU:HB3	1:B:226:PHE:HE2	1.81	0.46
1:D:310:LEU:HA	1:D:313:ARG:HD3	1.97	0.46
3:I:706:ARG:HG2	3:I:793:GLU:HG2	1.98	0.46
4:J:558:ASP:N	4:J:562:GLU:O	2.47	0.46
1:D:247:ALA:HA	1:D:250:LYS:HD2	1.97	0.45
3:I:1296:ASP:N	3:I:1296:ASP:OD1	2.48	0.45
4:J:966:VAL:HG21	4:J:1030:GLU:HA	1.98	0.45
6:M:315:ASP:OD1	6:M:315:ASP:N	2.47	0.45
3:I:349:GLU:OE1	3:I:349:GLU:N	2.49	0.45
1:F:146:MET:SD	1:F:313:ARG:NE	2.88	0.45
1:F:171:VAL:N	9:F:401:ATP:O2B	2.47	0.45
1:D:362:VAL:HG11	1:D:383:LEU:HD11	1.98	0.45
1:E:173:LYS:HG2	1:E:307:ILE:HD12	1.97	0.45
3:I:843:THR:OG1	3:I:846:GLY:O	2.29	0.45
4:J:1063:ASP:OD1	4:J:1064:SER:N	2.48	0.45

Continued on next page...

Continued from previous page...

Atom-1	Atom-2	Interatomic distance (Å)	Clash overlap (Å)
1:B:195:ASN:HB2	1:C:253:ARG:HD3	1.98	0.45
1:D:193:ALA:HA	1:D:236:PHE:HB3	1.99	0.45
1:F:162:PRO:HA	1:F:275:ILE:O	2.15	0.45
1:C:201:ARG:HH12	1:D:201:ARG:HH12	1.63	0.45
2:G:102:LEU:HD13	2:G:142:MET:HE3	1.97	0.45
3:I:582:ASN:ND2	3:I:588:GLU:OE1	2.49	0.45
3:I:995:ASP:OD1	3:I:995:ASP:N	2.49	0.45
4:J:328:ALA:O	4:J:332:LYS:HG2	2.17	0.45
4:J:773:PHE:O	4:J:776:THR:OG1	2.34	0.45
1:F:342:SER:HB2	1:F:377:ARG:HD2	1.99	0.45
2:G:102:LEU:O	2:G:141:SER:HA	2.16	0.45
2:G:285:THR:HG23	2:G:288:GLU:H	1.82	0.45
3:I:666:SER:HA	3:I:1186:VAL:HG11	1.97	0.45
4:J:294:ASN:ND2	6:M:303:TYR:OH	2.49	0.45
6:M:278:VAL:HG22	6:M:287:VAL:HG22	1.97	0.45
1:B:343:ALA:HB1	1:B:380:LEU:HD21	1.99	0.45
6:M:239:THR:HG23	6:M:241:LEU:HB2	1.98	0.45
1:E:181:HIS:CE1	1:E:191:PHE:HB2	2.53	0.44
4:J:744:ARG:HB2	4:J:759:ILE:HB	1.99	0.44
4:J:1155:ILE:HB	4:J:1210:ILE:HB	1.98	0.44
2:H:11:PRO:HG3	2:H:31:LEU:HD21	1.98	0.44
2:H:22:THR:HG21	2:H:209:GLY:HA2	1.99	0.44
3:I:956:ALA:HB1	3:I:1032:LYS:HG2	1.98	0.44
4:J:385:LEU:HD13	4:J:400:MET:HE3	1.98	0.44
4:J:591:ILE:HD11	4:J:604:MET:HA	1.99	0.44
1:F:181:HIS:NE2	1:F:189:GLU:O	2.45	0.44
3:I:1297:ASP:O	3:I:1301:ARG:HG3	2.18	0.44
4:J:399:LYS:HE3	4:J:399:LYS:HB2	1.79	0.44
6:M:199:LEU:HB3	6:M:220:ILE:HD13	1.99	0.44
6:M:158:LEU:HD21	6:M:179:LEU:HD22	1.98	0.44
8:V:56:DC:H2'	8:V:57:DA:N7	2.33	0.44
2:G:283:GLN:HE22	2:G:321:TRP:CD1	2.36	0.44
3:I:808:ASN:H	4:J:633:ALA:HB2	1.83	0.44
7:U:51:DT:H2'	7:U:52:DA:C8	2.53	0.44
1:D:207:GLU:OE2	1:E:264:GLY:N	2.49	0.44
1:F:346:LEU:HD23	1:F:380:LEU:HB3	2.00	0.44
4:J:1040:MET:HB3	4:J:1046:ILE:HD13	1.99	0.44
1:C:203:ILE:HG22	6:M:9:LEU:HG	2.00	0.43
1:D:336:VAL:HG21	1:D:375:ILE:HG13	2.00	0.43
3:I:1082:ILE:HD11	3:I:1093:PRO:HG2	2.00	0.43
4:J:123:ARG:NH2	4:J:1334:GLU:HG2	2.33	0.43

Continued on next page...

Continued from previous page...

Atom-1	Atom-2	Interatomic distance (Å)	Clash overlap (Å)
1:D:332:TYR:OH	1:D:364:GLU:OE2	2.35	0.43
3:I:347:ILE:HD11	3:I:433:ILE:HD11	2.00	0.43
1:D:354:GLY:HA3	1:D:358:GLU:HB2	1.99	0.43
1:E:286:LEU:HD22	1:E:291:LYS:HD2	2.00	0.43
2:H:192:VAL:HG12	2:H:193:GLU:H	1.83	0.43
4:J:1068:THR:O	4:J:1072:LYS:N	2.47	0.43
1:B:329:SER:O	1:B:333:ALA:N	2.51	0.43
4:J:262:THR:OG1	4:J:267:ASP:OD1	2.31	0.43
6:M:71:ASP:N	6:M:71:ASP:OD1	2.48	0.43
1:A:359:LEU:O	1:A:363:ILE:HG12	2.18	0.43
1:B:140:VAL:HG11	1:B:319:PRO:HB2	2.01	0.43
3:I:251:ALA:HB2	3:I:269:ILE:HD11	2.01	0.43
3:I:255:ILE:HB	3:I:263:VAL:HB	2.01	0.43
3:I:322:LEU:HD23	3:I:325:LEU:HD21	2.00	0.43
4:J:320:ASN:HB2	4:J:322:ARG:NE	2.34	0.43
4:J:1368:ASP:OD1	4:J:1371:ARG:NH1	2.42	0.43
1:B:186:ARG:NH1	1:B:232:GLY:O	2.52	0.43
1:D:212:GLU:HG3	1:D:213:LYS:H	1.83	0.43
3:I:1247:SER:HB2	4:J:375:GLU:O	2.19	0.43
1:C:224:GLU:O	1:D:266:ARG:NH2	2.38	0.43
1:C:234:THR:HG22	1:C:274:ARG:HB3	2.00	0.43
3:I:141:THR:HG21	3:I:514:PHE:CE2	2.54	0.43
3:I:341:LEU:HD12	3:I:341:LEU:H	1.84	0.43
3:I:1105:SER:HB3	14:I:1403:HOH:O	2.17	0.43
4:J:770:LEU:O	4:J:774:ILE:HG12	2.18	0.43
4:J:986:ASP:OD1	4:J:986:ASP:N	2.51	0.43
4:J:275:ARG:HA	4:J:275:ARG:HD3	1.84	0.43
1:A:320:LEU:O	1:A:323:HIS:HB3	2.19	0.43
1:F:327:LYS:O	1:F:330:ARG:HG3	2.19	0.43
3:I:225:PHE:CE2	3:I:347:ILE:HB	2.54	0.43
4:J:64:PRO:HG3	4:J:91:GLU:O	2.19	0.43
4:J:576:ARG:HD3	4:J:593:ASN:HA	2.01	0.43
1:F:360:LYS:NZ	9:F:401:ATP:O2'	2.49	0.42
2:G:8:PHE:HD1	2:G:8:PHE:HA	1.74	0.42
3:I:101:ARG:HD3	3:I:119:GLU:HG2	2.01	0.42
3:I:559:CYS:HB2	3:I:662:SER:HB3	2.00	0.42
1:C:196:VAL:HB	1:C:243:LEU:HD21	2.01	0.42
1:E:231:ASP:HA	1:E:273:VAL:HG22	1.99	0.42
3:I:224:PHE:CG	3:I:347:ILE:HG13	2.53	0.42
4:J:555:TYR:CE2	4:J:565:ALA:HB2	2.54	0.42
8:V:38:DT:H2"	8:V:39:DT:H5"	2.00	0.42

Continued on next page...

Continued from previous page...

Atom-1	Atom-2	Interatomic distance (Å)	Clash overlap (Å)
1:F:143:SER:HB2	1:F:316:ASP:OD1	2.20	0.42
4:J:1139:PRO:HG3	6:M:73:LEU:HB3	2.01	0.42
7:U:43:DA:H2"	7:U:44:DA:C8	2.54	0.42
1:A:335:GLU:HG3	1:A:373:LYS:HG3	2.00	0.42
4:J:975:ILE:HD13	4:J:980:THR:HG21	2.02	0.42
4:J:1178:THR:HG23	4:J:1184:ASP:HB2	2.02	0.42
6:M:161:ILE:O	6:M:165:ILE:HG12	2.19	0.42
1:A:328:PHE:HA	1:A:331:LYS:HB3	2.02	0.42
1:E:138:GLU:HB3	1:E:139:TYR:H	1.61	0.42
1:B:284:LYS:HE3	1:B:288:LYS:HE3	2.00	0.42
1:D:174:GLU:O	1:D:178:ARG:HG3	2.20	0.42
4:J:975:ILE:HD11	4:J:1003:LEU:HD11	2.02	0.42
4:J:1101:LEU:HD13	4:J:1105:ALA:HB1	2.02	0.42
1:E:145:LYS:HE2	1:E:145:LYS:HB3	1.91	0.42
3:I:196:VAL:HG23	3:I:206:ALA:HA	2.02	0.42
4:J:572:THR:OG1	4:J:573:THR:N	2.51	0.42
1:F:350:TYR:CD1	1:F:351:PRO:HD2	2.55	0.42
4:J:708:ASN:OD1	4:J:709:ARG:N	2.48	0.42
6:M:33:LEU:HD23	6:M:295:PRO:HG3	2.02	0.42
6:M:385:THR:HG22	6:M:399:LEU:HD23	2.02	0.42
7:U:53:DA:H2"	7:U:54:DA:C8	2.55	0.42
1:F:287:VAL:HG22	1:F:292:PHE:HB3	2.02	0.41
3:I:65:ASN:O	3:I:105:TYR:N	2.37	0.41
4:J:925:GLU:HB3	4:J:926:PRO:HD3	2.01	0.41
4:J:1046:ILE:HG22	4:J:1061:VAL:HG22	2.02	0.41
2:H:178:SER:HA	2:H:179:PRO:HD3	1.94	0.41
3:I:972:PHE:CD1	3:I:994:ARG:HB3	2.55	0.41
1:A:149:ILE:O	1:A:153:ILE:HG12	2.20	0.41
1:D:153:ILE:HG23	1:D:180:ILE:HG12	2.02	0.41
4:J:204:GLU:O	4:J:208:THR:OG1	2.34	0.41
1:A:308:PRO:HG2	1:A:313:ARG:HD2	2.02	0.41
4:J:1208:ASP:OD1	4:J:1209:VAL:N	2.53	0.41
2:H:192:VAL:HG23	2:H:198:LEU:HD12	2.01	0.41
3:I:364:VAL:O	3:I:368:ARG:HG3	2.20	0.41
4:J:483:LEU:HD23	5:K:16:ARG:HD3	2.03	0.41
1:A:346:LEU:HD22	1:A:377:ARG:HD2	2.02	0.41
1:F:153:ILE:HD11	1:F:305:ILE:HD13	2.03	0.41
4:J:102:MET:HG2	4:J:246:PRO:HD3	2.01	0.41
1:E:256:GLU:HG3	1:E:299:ARG:HG2	2.02	0.41
3:I:967:LEU:HD13	3:I:1021:LEU:HD11	2.03	0.41
4:J:126:LEU:HD23	4:J:223:LEU:HD22	2.02	0.41

Continued on next page...

Continued from previous page...

Atom-1	Atom-2	Interatomic distance (Å)	Clash overlap (Å)
4:J:1140:ARG:NH2	4:J:1236:GLU:OE1	2.52	0.41
6:M:32:GLU:O	6:M:36:GLU:HG2	2.21	0.41
6:M:165:ILE:HG21	6:M:170:ILE:HD12	2.03	0.41
1:B:322:ASN:O	1:B:325:LEU:HB3	2.21	0.41
1:F:329:SER:OG	1:F:334:LYS:O	2.35	0.41
4:J:746:LEU:HD23	4:J:758:PRO:HB3	2.03	0.41
1:B:243:LEU:O	1:B:248:GLN:NE2	2.39	0.41
1:C:205:GLU:OE2	1:C:250:LYS:NZ	2.51	0.41
1:F:350:TYR:HD1	1:F:351:PRO:HD2	1.86	0.41
2:H:32:GLU:HB2	2:H:35:PHE:CD1	2.56	0.41
3:I:492:MET:HE3	3:I:492:MET:HB2	1.91	0.41
3:I:954:LYS:HE2	3:I:954:LYS:HB3	1.89	0.41
4:J:1048:ARG:HH22	4:J:1057:SER:C	2.28	0.41
1:C:295:ASP:HB2	1:C:299:ARG:NH1	2.36	0.41
1:E:153:ILE:HG23	1:E:180:ILE:HG12	2.02	0.41
4:J:438:GLU:HA	4:J:439:PRO:HD3	1.95	0.41
1:E:286:LEU:HA	1:E:289:GLU:HG2	2.02	0.40
1:F:228:GLU:OE1	1:F:262:ARG:NH1	2.54	0.40
2:G:214:GLU:O	2:G:218:ARG:HG3	2.21	0.40
2:H:57:THR:HG23	2:H:158:ARG:NH1	2.35	0.40
3:I:292:ILE:HB	3:I:322:LEU:HD11	2.02	0.40
4:J:210:SER:H	4:J:214:ARG:NH1	2.19	0.40
2:H:196:THR:HG21	4:J:443:GLU:HG3	2.02	0.40
4:J:885:VAL:HG21	4:J:1255:VAL:HG12	2.03	0.40
1:A:168:GLU:HG2	1:A:169:SER:H	1.86	0.40
1:F:346:LEU:HD11	1:F:384:VAL:HG11	2.03	0.40
3:I:320:ASP:OD1	3:I:321:LEU:N	2.55	0.40
4:J:29:MET:HE3	4:J:33:TRP:HE1	1.87	0.40
4:J:1104:LYS:HE3	4:J:1104:LYS:HB2	1.96	0.40
6:M:292:ASP:OD1	6:M:292:ASP:N	2.54	0.40
1:C:175:VAL:HG21	9:C:401:ATP:H2'	2.04	0.40
1:D:162:PRO:HB3	1:D:275:ILE:HB	2.04	0.40
3:I:646:SER:HB3	3:I:649:GLN:HG3	2.02	0.40
6:M:455:ARG:HE	6:M:455:ARG:HB3	1.72	0.40

There are no symmetry-related clashes.

5.3 Torsion angles

5.3.1 Protein backbone

In the following table, the Percentiles column shows the percent Ramachandran outliers of the chain as a percentile score with respect to all PDB entries followed by that with respect to all EM entries.

The Analysed column shows the number of residues for which the backbone conformation was analysed, and the total number of residues.

Mol	Chain	Analysed	Favoured	Allowed	Outliers	Percentiles	
1	A	245/268 (91%)	240 (98%)	5 (2%)	0	100	100
1	B	245/268 (91%)	240 (98%)	5 (2%)	0	100	100
1	C	245/268 (91%)	241 (98%)	4 (2%)	0	100	100
1	D	245/268 (91%)	240 (98%)	5 (2%)	0	100	100
1	E	245/268 (91%)	234 (96%)	11 (4%)	0	100	100
1	F	244/268 (91%)	238 (98%)	6 (2%)	0	100	100
2	G	300/329 (91%)	294 (98%)	6 (2%)	0	100	100
2	H	219/329 (67%)	215 (98%)	4 (2%)	0	100	100
3	I	1338/1342 (100%)	1304 (98%)	34 (2%)	0	100	100
4	J	1345/1415 (95%)	1319 (98%)	26 (2%)	0	100	100
5	K	77/91 (85%)	76 (99%)	1 (1%)	0	100	100
6	M	451/477 (94%)	440 (98%)	11 (2%)	0	100	100
All	All	5199/5591 (93%)	5081 (98%)	118 (2%)	0	100	100

There are no Ramachandran outliers to report.

5.3.2 Protein sidechains

In the following table, the Percentiles column shows the percent sidechain outliers of the chain as a percentile score with respect to all PDB entries followed by that with respect to all EM entries.

The Analysed column shows the number of residues for which the sidechain conformation was analysed, and the total number of residues.

Mol	Chain	Analysed	Rotameric	Outliers	Percentiles	
1	A	212/233 (91%)	208 (98%)	4 (2%)	50	77
1	B	212/233 (91%)	210 (99%)	2 (1%)	70	87

Continued on next page...

Continued from previous page...

Mol	Chain	Analysed	Rotameric	Outliers	Percentiles	
1	C	212/233 (91%)	210 (99%)	2 (1%)	70	87
1	D	212/233 (91%)	209 (99%)	3 (1%)	59	82
1	E	212/233 (91%)	209 (99%)	3 (1%)	59	82
1	F	210/233 (90%)	207 (99%)	3 (1%)	59	82
2	G	264/286 (92%)	260 (98%)	4 (2%)	57	81
2	H	191/286 (67%)	189 (99%)	2 (1%)	68	86
3	I	1155/1157 (100%)	1139 (99%)	16 (1%)	59	82
4	J	1134/1176 (96%)	1112 (98%)	22 (2%)	50	77
5	K	67/75 (89%)	67 (100%)	0	100	100
6	M	403/428 (94%)	394 (98%)	9 (2%)	45	74
All	All	4484/4806 (93%)	4414 (98%)	70 (2%)	54	80

All (70) residues with a non-rotameric sidechain are listed below:

Mol	Chain	Res	Type
1	A	196	VAL
1	A	227	PHE
1	A	246	GLU
1	A	302	VAL
1	B	151	GLU
1	B	371	GLU
1	C	273	VAL
1	C	346	LEU
1	D	142	GLU
1	D	208	LEU
1	D	251	LEU
1	E	150	LEU
1	E	161	CYS
1	E	336	VAL
1	F	150	LEU
1	F	243	LEU
1	F	356	VAL
2	G	8	PHE
2	G	64	VAL
2	G	192	VAL
2	G	228	LEU
2	H	77	ASP
2	H	193	GLU

Continued on next page...

Continued from previous page...

Mol	Chain	Res	Type
3	I	39	ILE
3	I	44	GLU
3	I	289	VAL
3	I	342	ASP
3	I	484	LEU
3	I	745	GLU
3	I	856	ASN
3	I	898	GLU
3	I	957	LYS
3	I	979	LEU
3	I	984	VAL
3	I	1011	LEU
3	I	1029	LEU
3	I	1060	ILE
3	I	1206	THR
3	I	1289	GLU
4	J	44	ILE
4	J	67	ASP
4	J	161	THR
4	J	227	PHE
4	J	253	VAL
4	J	260	PHE
4	J	282	LEU
4	J	292	VAL
4	J	430	HIS
4	J	645	VAL
4	J	664	ILE
4	J	699	ASP
4	J	795	TYR
4	J	799	ARG
4	J	891	ASP
4	J	986	ASP
4	J	1027	VAL
4	J	1124	ILE
4	J	1173	ARG
4	J	1175	LEU
4	J	1194	ARG
4	J	1255	VAL
6	M	16	THR
6	M	21	GLN
6	M	71	ASP
6	M	215	GLU

Continued on next page...

Continued from previous page...

Mol	Chain	Res	Type
6	M	272	VAL
6	M	294	ILE
6	M	296	ARG
6	M	315	ASP
6	M	475	GLN

Sometimes sidechains can be flipped to improve hydrogen bonding and reduce clashes. All (16) such sidechains are listed below:

Mol	Chain	Res	Type
1	B	272	ASN
1	D	282	ASN
1	E	280	ASN
1	F	323	HIS
2	H	186	ASN
3	I	133	ASN
3	I	1237	HIS
3	I	1244	HIS
4	J	424	ASN
4	J	435	GLN
4	J	700	ASN
4	J	720	ASN
4	J	1259	GLN
5	K	31	GLN
5	K	61	ASN
6	M	205	GLN

5.3.3 RNA ⓘ

There are no RNA molecules in this entry.

5.4 Non-standard residues in protein, DNA, RNA chains ⓘ

There are no non-standard protein/DNA/RNA residues in this entry.

5.5 Carbohydrates ⓘ

There are no oligosaccharides in this entry.

5.6 Ligand geometry

Of 11 ligands modelled in this entry, 4 are monoatomic - leaving 7 for Mogul analysis.

In the following table, the Counts columns list the number of bonds (or angles) for which Mogul statistics could be retrieved, the number of bonds (or angles) that are observed in the model and the number of bonds (or angles) that are defined in the Chemical Component Dictionary. The Link column lists molecule types, if any, to which the group is linked. The Z score for a bond length (or angle) is the number of standard deviations the observed value is removed from the expected value. A bond length (or angle) with $|Z| > 2$ is considered an outlier worth inspection. RMSZ is the root-mean-square of all Z scores of the bond lengths (or angles).

Mol	Type	Chain	Res	Link	Bond lengths			Bond angles		
					Counts	RMSZ	$\# Z > 2$	Counts	RMSZ	$\# Z > 2$
9	ATP	B	401	-	32,33,33	0.29	0	48,52,52	0.39	0
9	ATP	F	401	-	32,33,33	0.27	0	48,52,52	0.35	0
9	ATP	A	401	10	32,33,33	0.28	0	48,52,52	0.38	0
11	ADP	E	401	-	28,29,29	1.43	5 (17%)	43,45,45	1.83	9 (20%)
9	ATP	D	401	-	32,33,33	0.27	0	48,52,52	0.36	0
12	POP	J	1501	-	6,8,8	0.79	0	12,13,13	0.97	0
9	ATP	C	401	-	32,33,33	0.28	0	48,52,52	0.38	0

In the following table, the Chirals column lists the number of chiral outliers, the number of chiral centers analysed, the number of these observed in the model and the number defined in the Chemical Component Dictionary. Similar counts are reported in the Torsion and Rings columns. '-' means no outliers of that kind were identified.

Mol	Type	Chain	Res	Link	Chirals	Torsions	Rings
9	ATP	B	401	-	-	12/22/38/38	0/3/3/3
9	ATP	F	401	-	-	0/22/38/38	0/3/3/3
9	ATP	A	401	10	-	3/22/38/38	0/3/3/3
11	ADP	E	401	-	-	3/16/32/32	0/3/3/3
9	ATP	D	401	-	-	3/22/38/38	0/3/3/3
12	POP	J	1501	-	-	1/6/6/6	-
9	ATP	C	401	-	-	3/22/38/38	0/3/3/3

All (5) bond length outliers are listed below:

Mol	Chain	Res	Type	Atoms	Z	Observed(Å)	Ideal(Å)
11	E	401	ADP	C5-C4	4.71	1.47	1.39
11	E	401	ADP	C5-C6	2.78	1.48	1.41
11	E	401	ADP	C8-N7	2.40	1.36	1.31
11	E	401	ADP	C5-N7	-2.23	1.35	1.39
11	E	401	ADP	PA-O3A	2.06	1.61	1.59

All (9) bond angle outliers are listed below:

Mol	Chain	Res	Type	Atoms	Z	Observed(°)	Ideal(°)
11	E	401	ADP	C5-C4-N3	-5.91	118.58	126.72
11	E	401	ADP	N3-C4-N9	4.60	134.99	127.17
11	E	401	ADP	C2-N3-C4	3.73	120.94	111.83
11	E	401	ADP	C4-C5-N7	-3.51	106.57	110.58
11	E	401	ADP	N3-C2-N1	-3.21	123.72	128.58
11	E	401	ADP	C5-N7-C8	2.52	107.42	103.45
11	E	401	ADP	C4-N9-C8	2.47	108.33	105.74
11	E	401	ADP	C3'-C2'-C1'	2.38	105.96	101.46
11	E	401	ADP	C6-C5-N7	2.05	136.04	132.09

There are no chirality outliers.

All (25) torsion outliers are listed below:

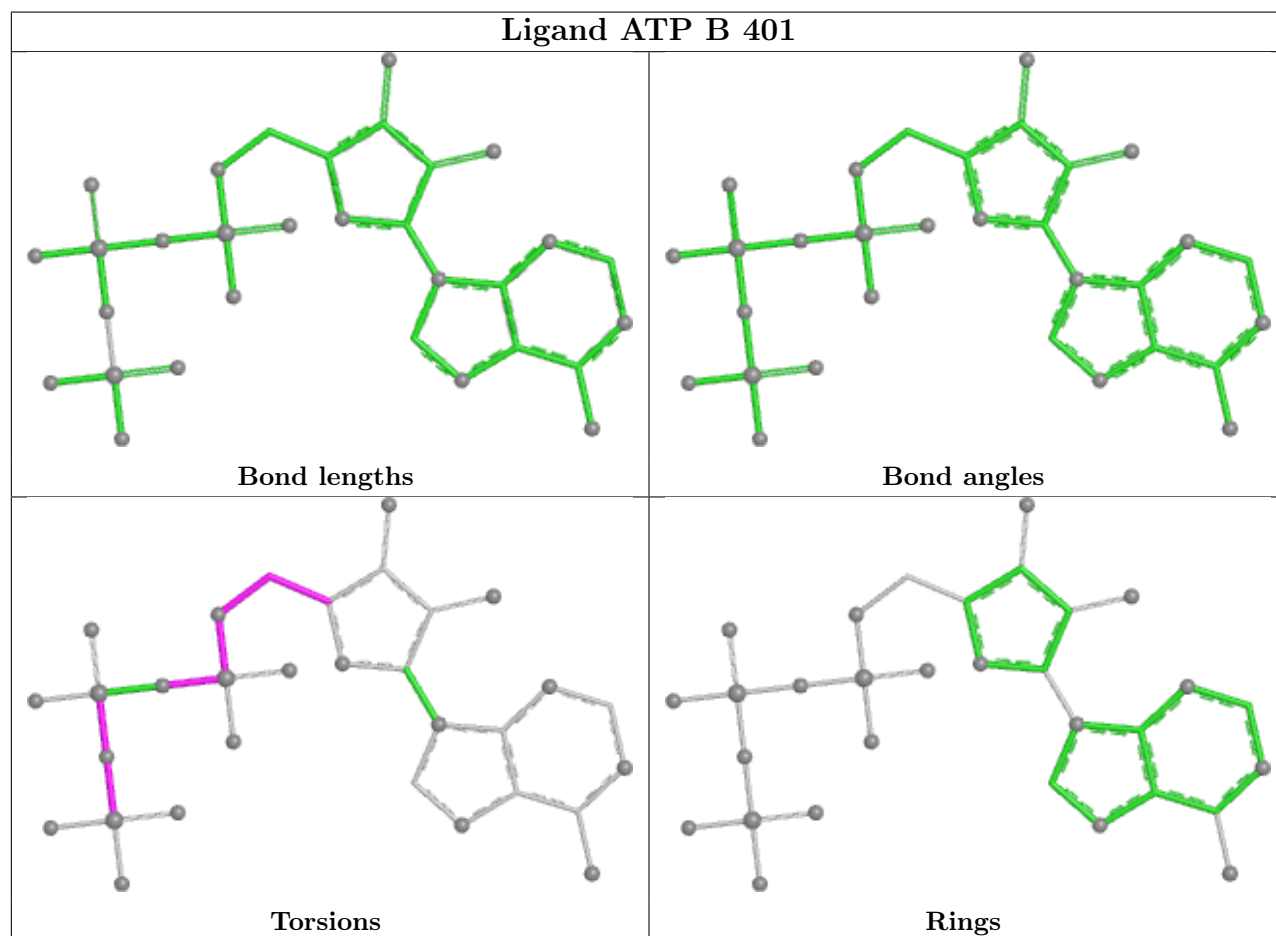
Mol	Chain	Res	Type	Atoms
9	B	401	ATP	PB-O3B-PG-O2G
9	B	401	ATP	C5'-O5'-PA-O1A
9	B	401	ATP	C5'-O5'-PA-O2A
9	B	401	ATP	C5'-O5'-PA-O3A
9	C	401	ATP	PB-O3B-PG-O2G
9	D	401	ATP	PB-O3B-PG-O2G
9	D	401	ATP	PB-O3B-PG-O3G
9	D	401	ATP	C5'-O5'-PA-O1A
11	E	401	ADP	O4'-C4'-C5'-O5'
9	C	401	ATP	PA-O3A-PB-O3B
11	E	401	ADP	PB-O3A-PA-O1A
9	B	401	ATP	PB-O3B-PG-O1G
12	J	1501	POP	P2-O-P1-O3
9	B	401	ATP	C4'-C5'-O5'-PA
9	B	401	ATP	O4'-C4'-C5'-O5'
9	B	401	ATP	PG-O3B-PB-O3A
9	A	401	ATP	PB-O3A-PA-O2A
9	B	401	ATP	PB-O3A-PA-O2A
11	E	401	ADP	PB-O3A-PA-O2A
9	B	401	ATP	C3'-C4'-C5'-O5'
9	C	401	ATP	PB-O3B-PG-O1G
9	A	401	ATP	PB-O3B-PG-O3G
9	A	401	ATP	PB-O3A-PA-O1A
9	B	401	ATP	PG-O3B-PB-O1B
9	B	401	ATP	PG-O3B-PB-O2B

There are no ring outliers.

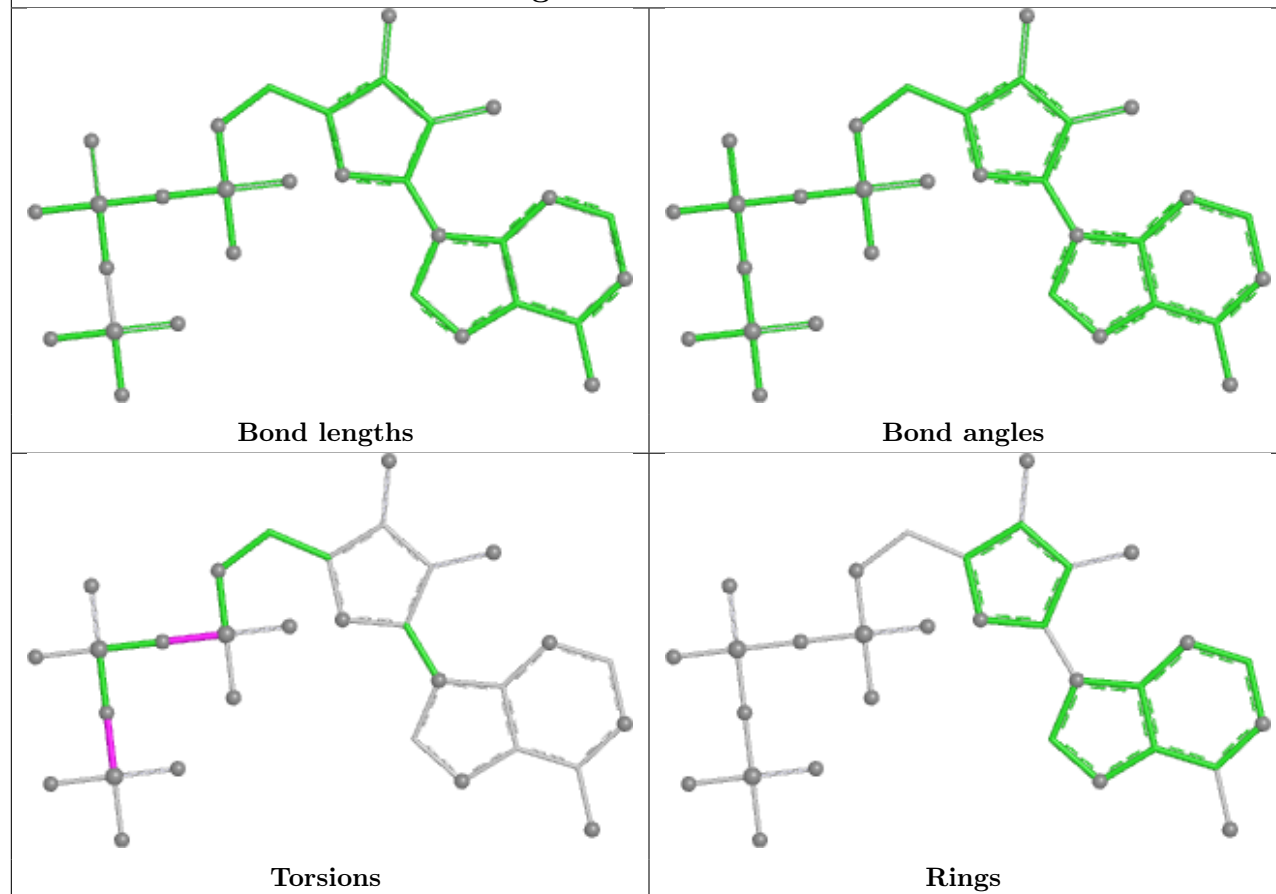
3 monomers are involved in 4 short contacts:

Mol	Chain	Res	Type	Clashes	Symm-Clashes
9	F	401	ATP	2	0
11	E	401	ADP	1	0
9	C	401	ATP	1	0

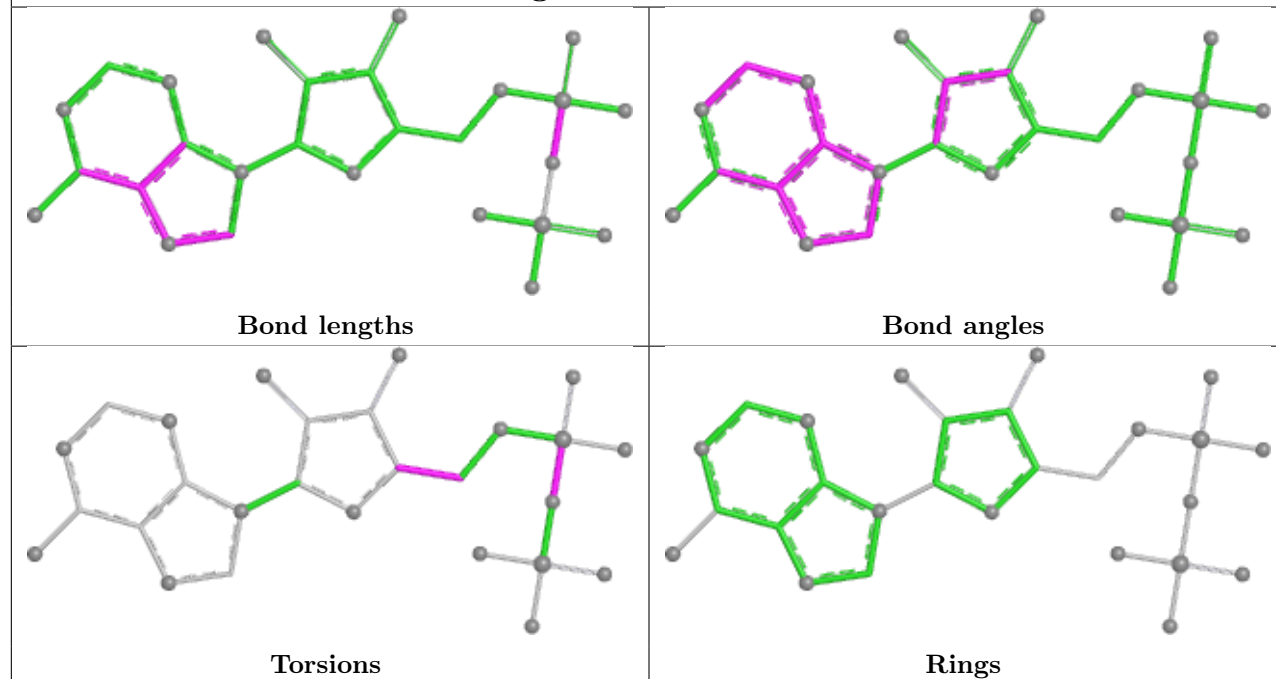
The following is a two-dimensional graphical depiction of Mogul quality analysis of bond lengths, bond angles, torsion angles, and ring geometry for all instances of the Ligand of Interest. In addition, ligands with molecular weight > 250 and outliers as shown on the validation Tables will also be included. For torsion angles, if less than 5% of the Mogul distribution of torsion angles is within 10 degrees of the torsion angle in question, then that torsion angle is considered an outlier. Any bond that is central to one or more torsion angles identified as an outlier by Mogul will be highlighted in the graph. For rings, the root-mean-square deviation (RMSD) between the ring in question and similar rings identified by Mogul is calculated over all ring torsion angles. If the average RMSD is greater than 60 degrees and the minimal RMSD between the ring in question and any Mogul-identified rings is also greater than 60 degrees, then that ring is considered an outlier. The outliers are highlighted in purple. The color gray indicates Mogul did not find sufficient equivalents in the CSD to analyse the geometry.

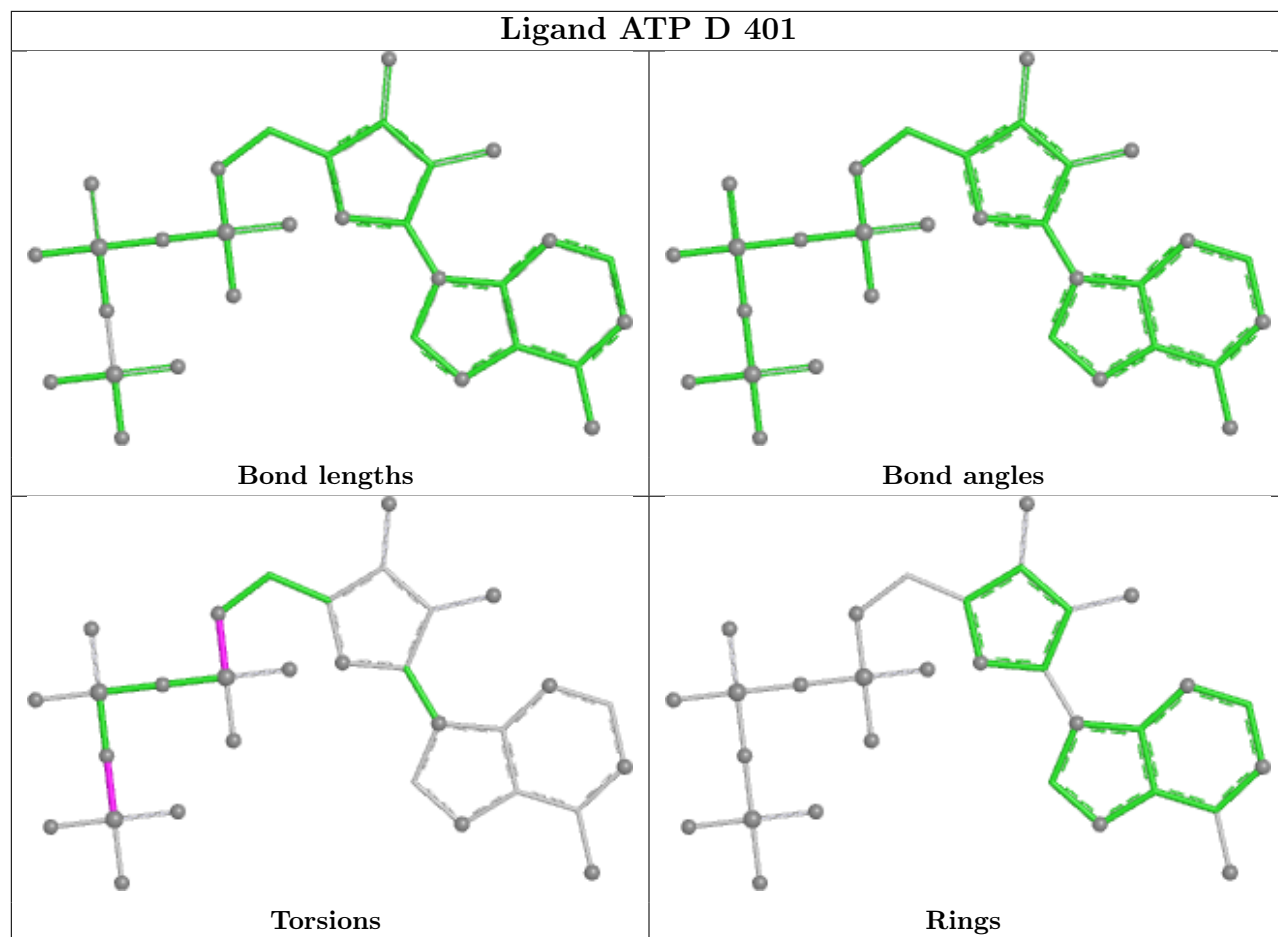


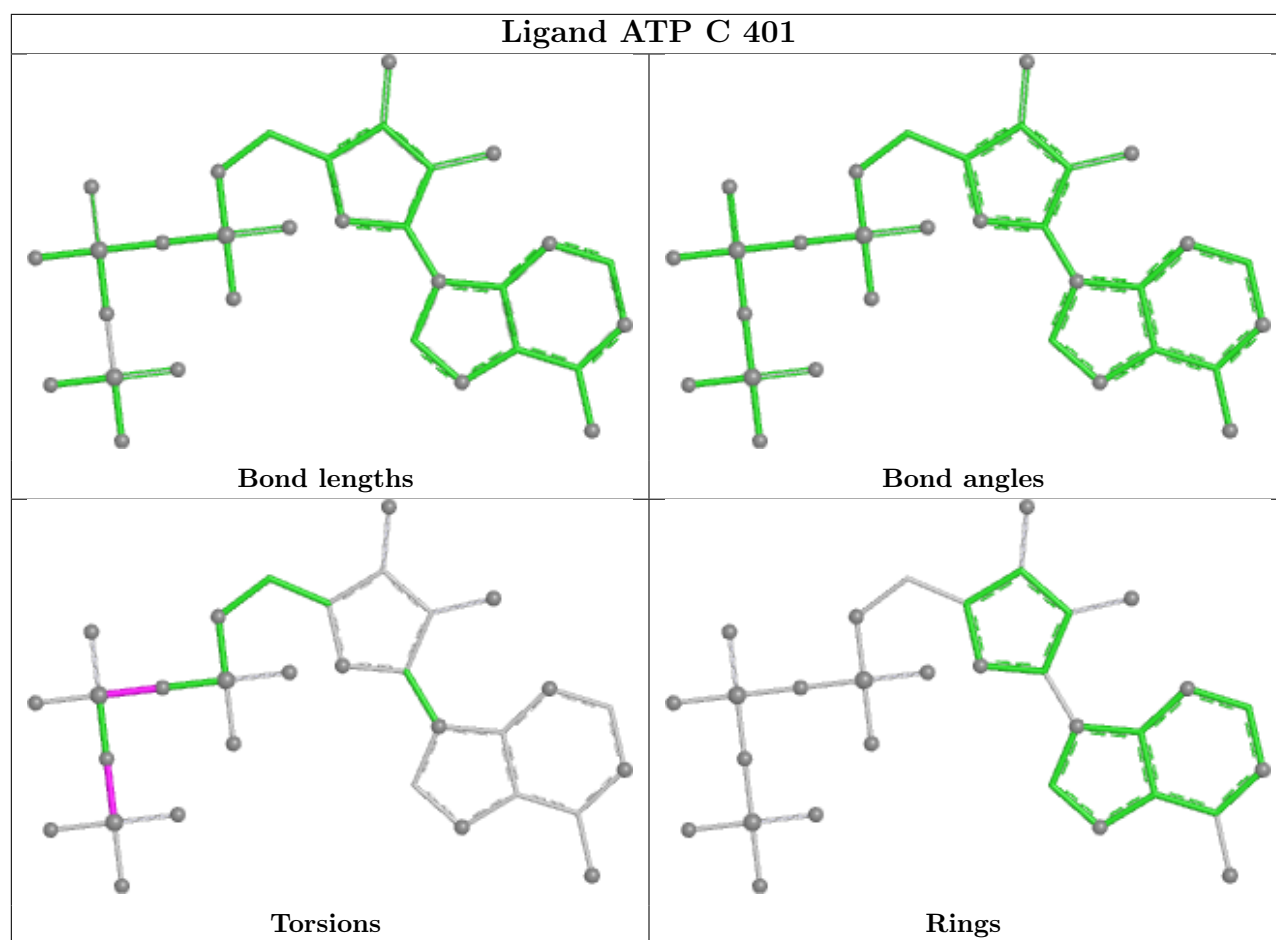
Ligand ATP A 401



Ligand ADP E 401







5.7 Other polymers [i](#)

There are no such residues in this entry.

5.8 Polymer linkage issues [i](#)

There are no chain breaks in this entry.

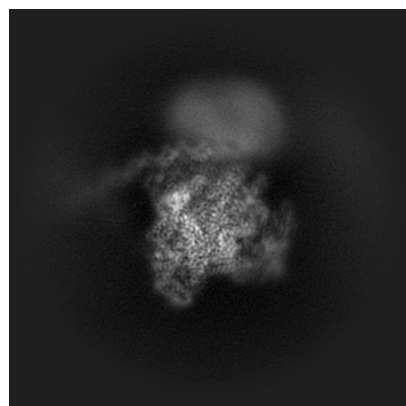
6 Map visualisation [i](#)

This section contains visualisations of the EMDB entry EMD-48588. These allow visual inspection of the internal detail of the map and identification of artifacts.

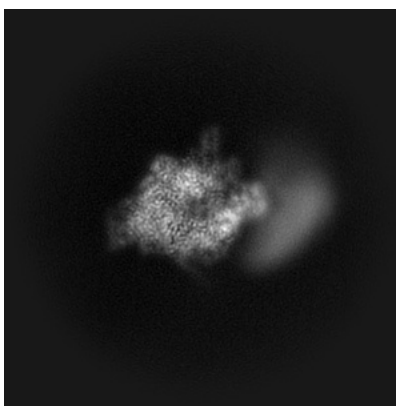
Images derived from a raw map, generated by summing the deposited half-maps, are presented below the corresponding image components of the primary map to allow further visual inspection and comparison with those of the primary map.

6.1 Orthogonal projections [i](#)

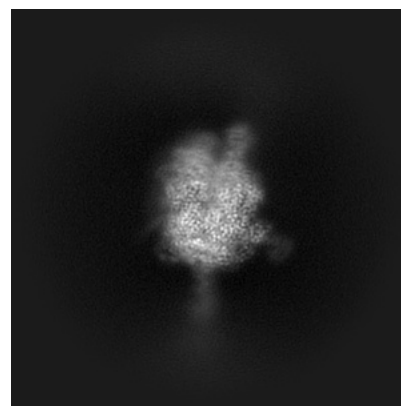
6.1.1 Primary map



X

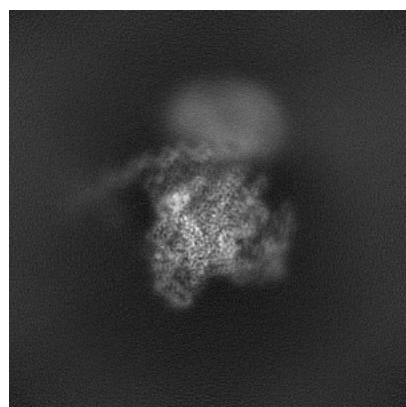


Y

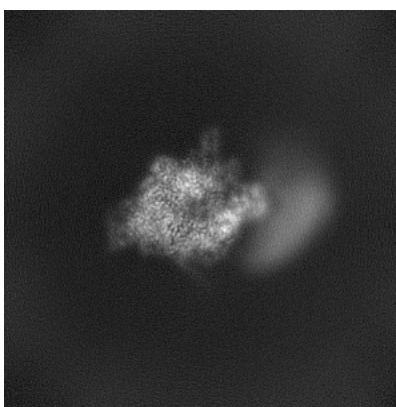


Z

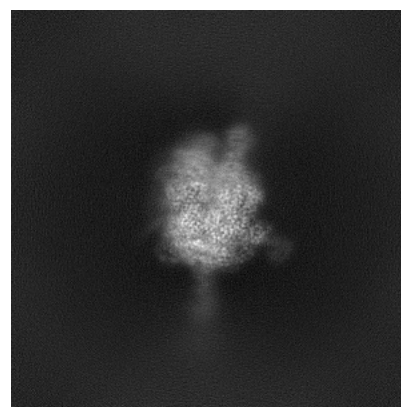
6.1.2 Raw map



X



Y

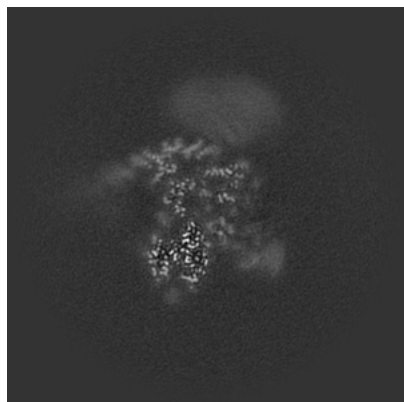


Z

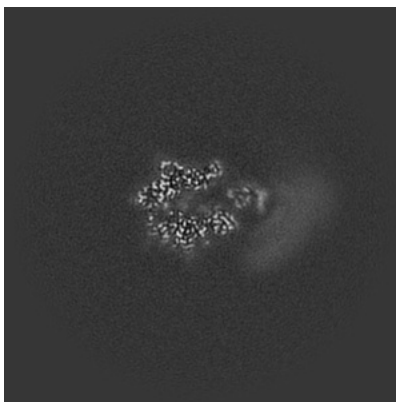
The images above show the map projected in three orthogonal directions.

6.2 Central slices [i](#)

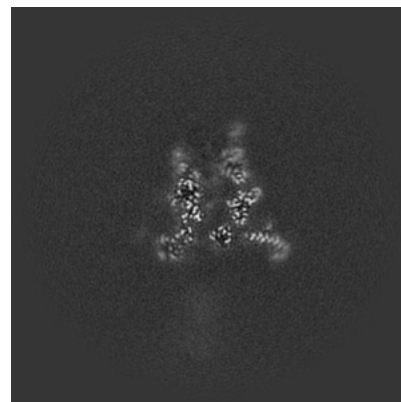
6.2.1 Primary map



X Index: 224

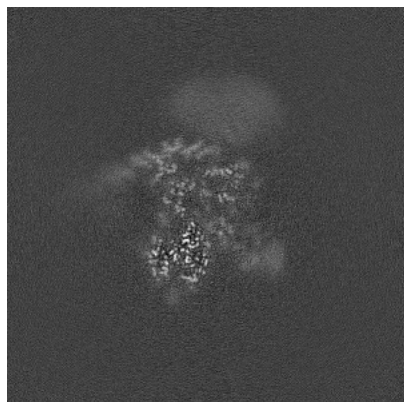


Y Index: 224

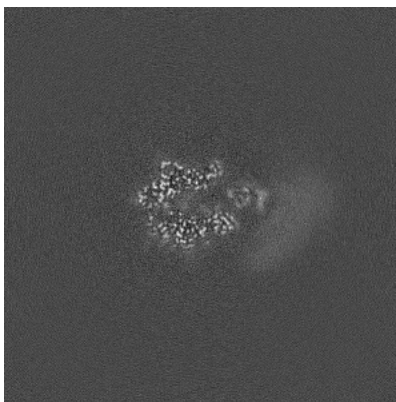


Z Index: 224

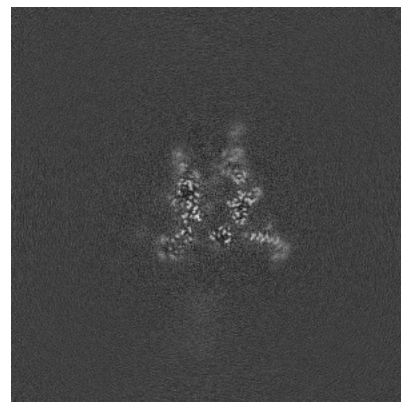
6.2.2 Raw map



X Index: 224



Y Index: 224

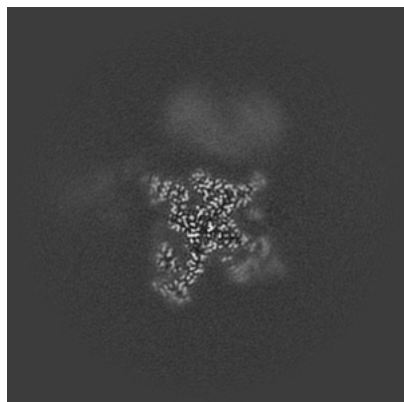


Z Index: 224

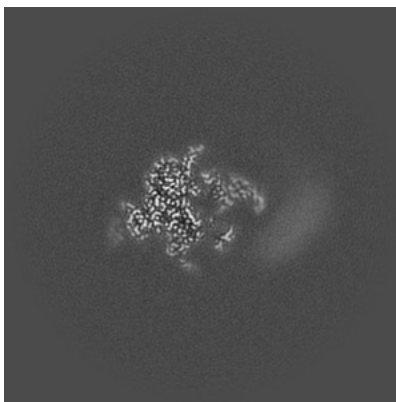
The images above show central slices of the map in three orthogonal directions.

6.3 Largest variance slices [i](#)

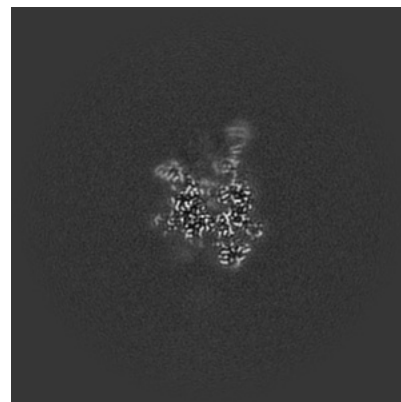
6.3.1 Primary map



X Index: 201

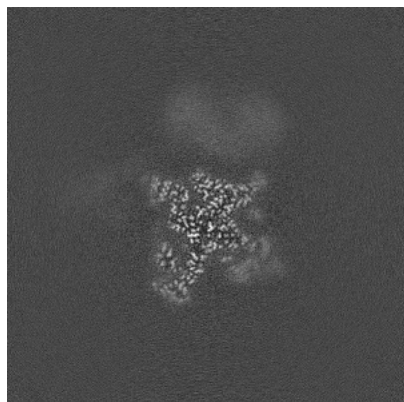


Y Index: 205

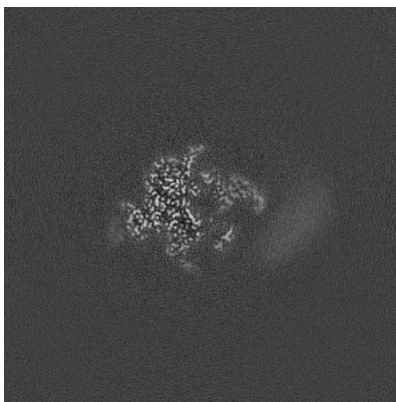


Z Index: 199

6.3.2 Raw map



X Index: 201



Y Index: 205

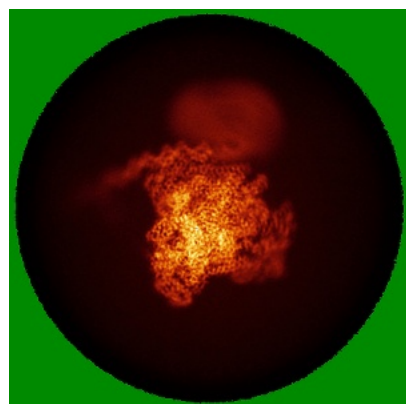


Z Index: 199

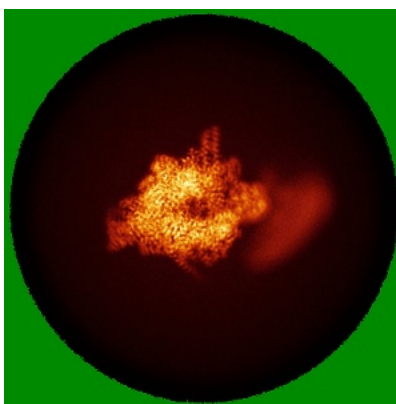
The images above show the largest variance slices of the map in three orthogonal directions.

6.4 Orthogonal standard-deviation projections (False-color) [i](#)

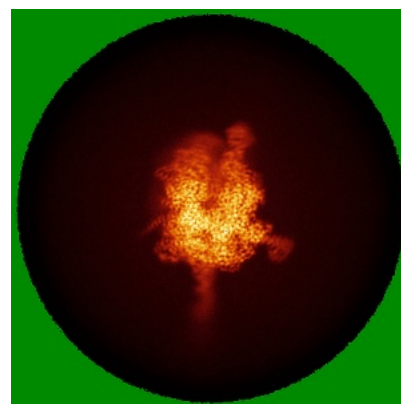
6.4.1 Primary map



X

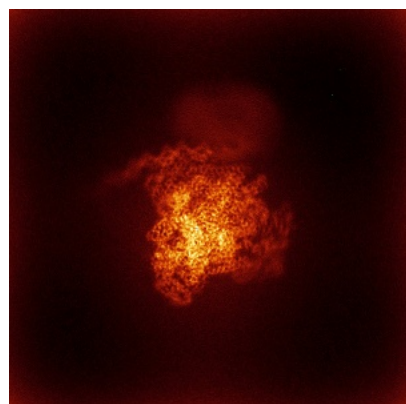


Y

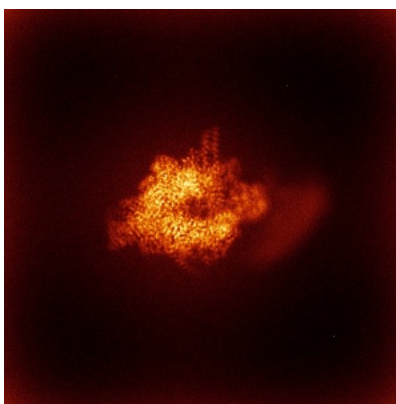


Z

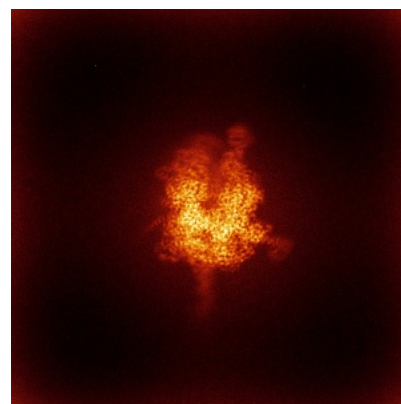
6.4.2 Raw map



X



Y

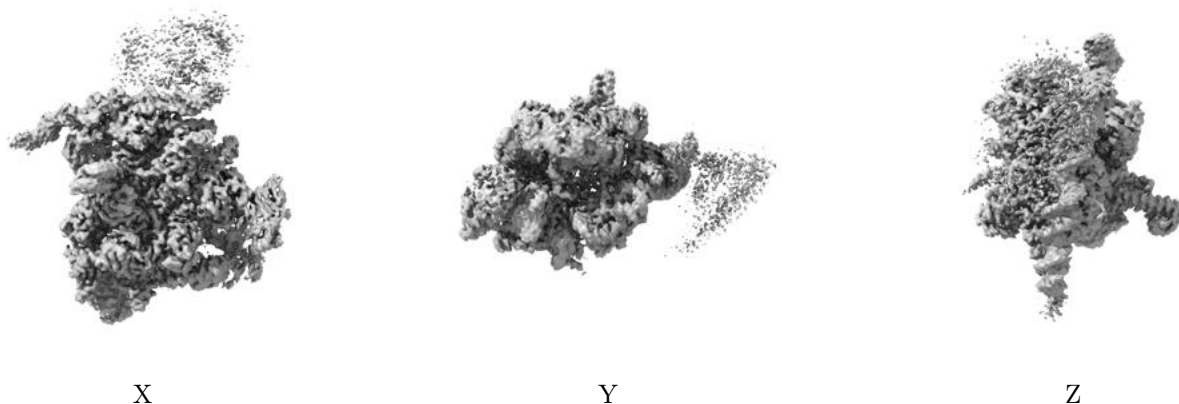


Z

The images above show the map standard deviation projections with false color in three orthogonal directions. Minimum values are shown in green, max in blue, and dark to light orange shades represent small to large values respectively.

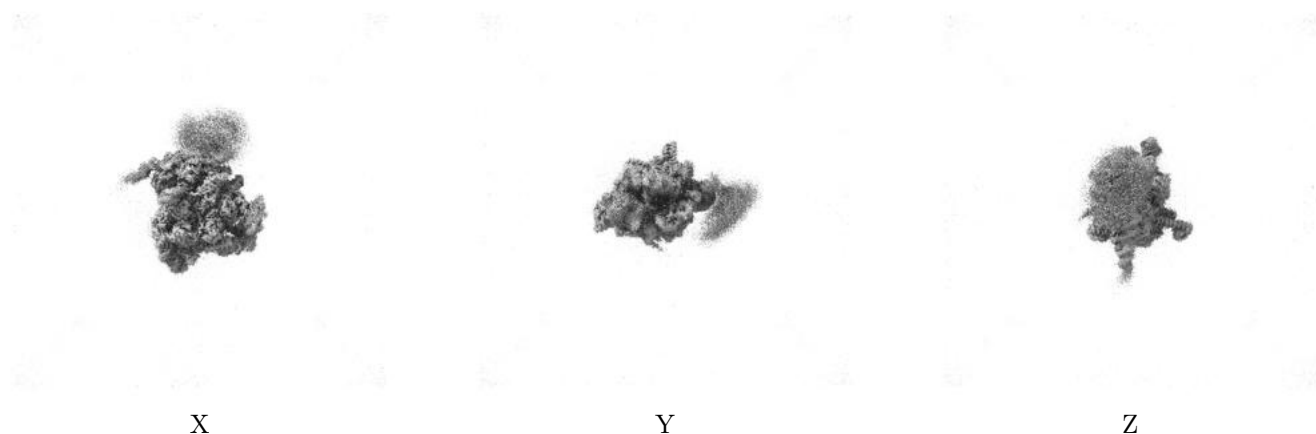
6.5 Orthogonal surface views [i](#)

6.5.1 Primary map



The images above show the 3D surface view of the map at the recommended contour level 0.12. These images, in conjunction with the slice images, may facilitate assessment of whether an appropriate contour level has been provided.

6.5.2 Raw map



These images show the 3D surface of the raw map. The raw map's contour level was selected so that its surface encloses the same volume as the primary map does at its recommended contour level.

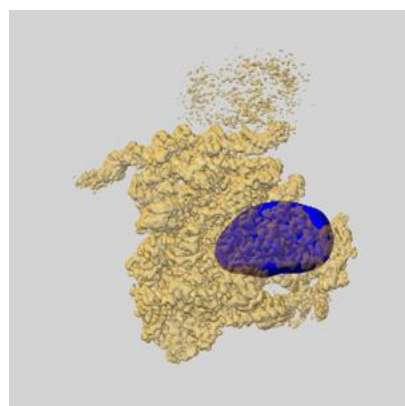
6.6 Mask visualisation [i](#)

This section shows the 3D surface view of the primary map at 50% transparency overlaid with the specified mask at 0% transparency

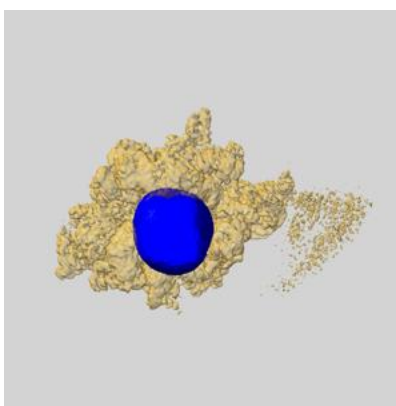
A mask typically either:

- Encompasses the whole structure
- Separates out a domain, a functional unit, a monomer or an area of interest from a larger structure

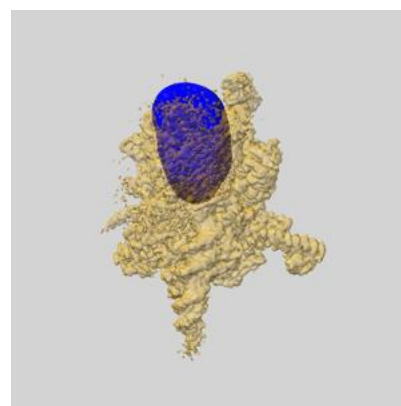
6.6.1 emd_48588_msk_1.map [i](#)



X



Y

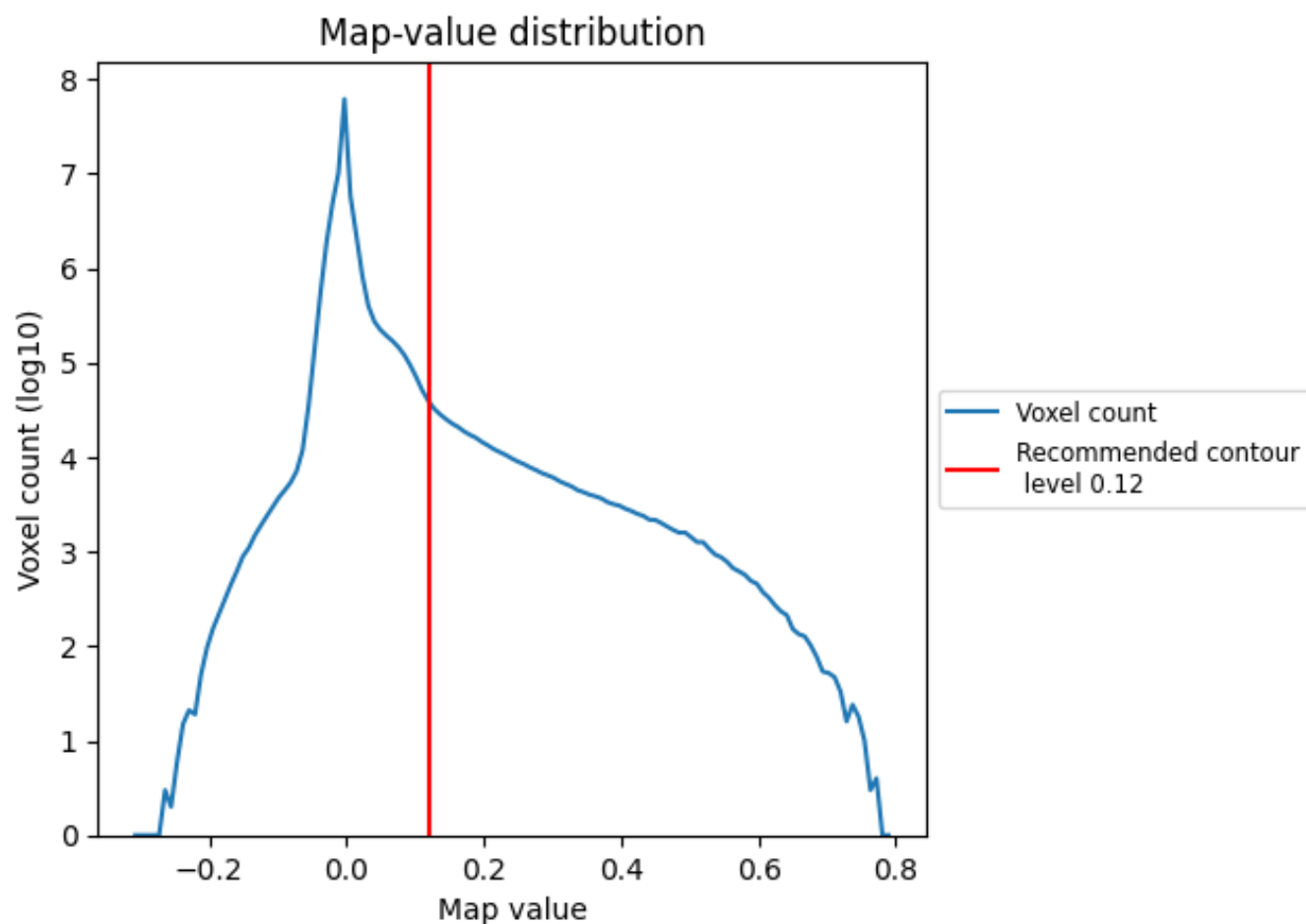


Z

7 Map analysis [i](#)

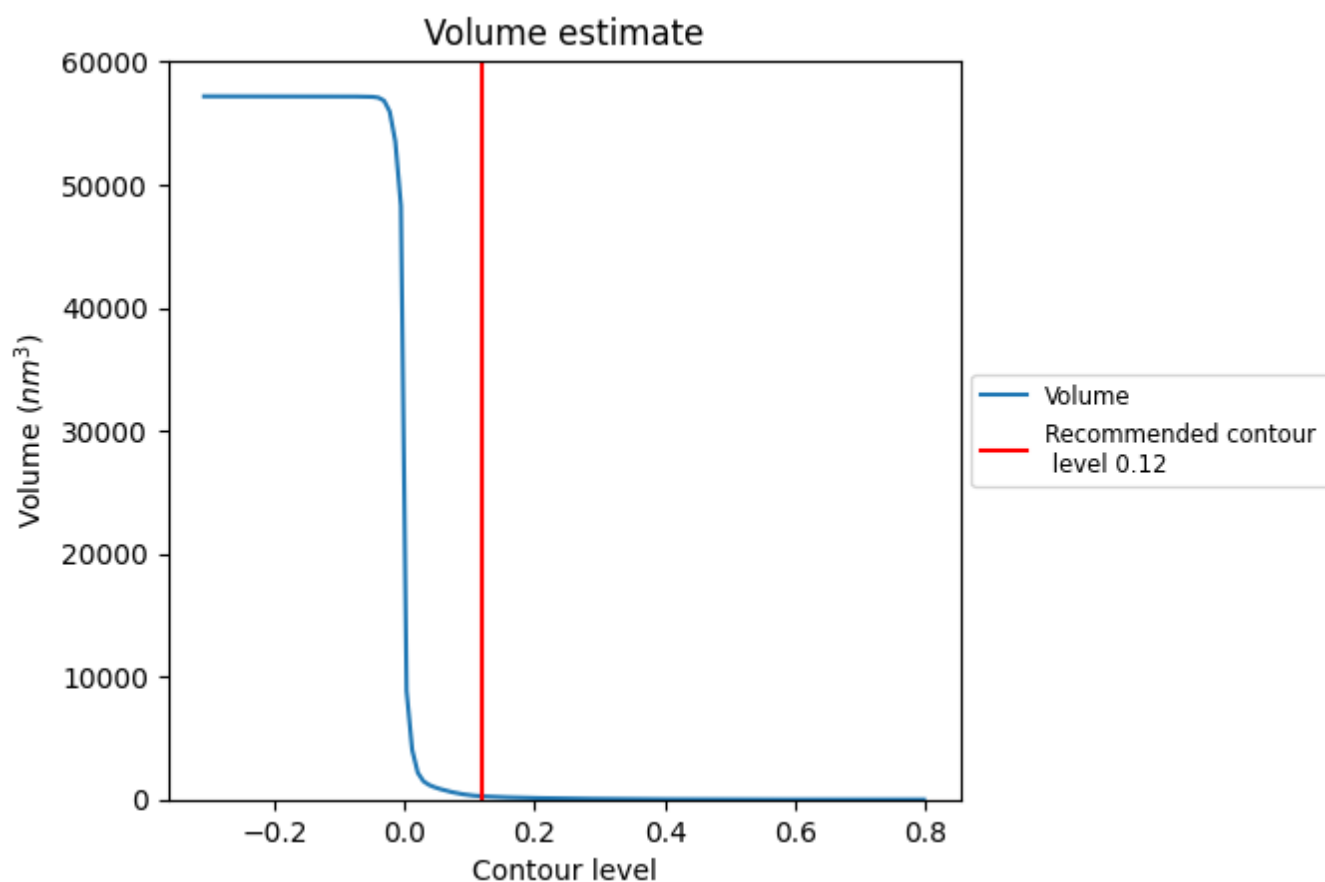
This section contains the results of statistical analysis of the map.

7.1 Map-value distribution [i](#)



The map-value distribution is plotted in 128 intervals along the x-axis. The y-axis is logarithmic. A spike in this graph at zero usually indicates that the volume has been masked.

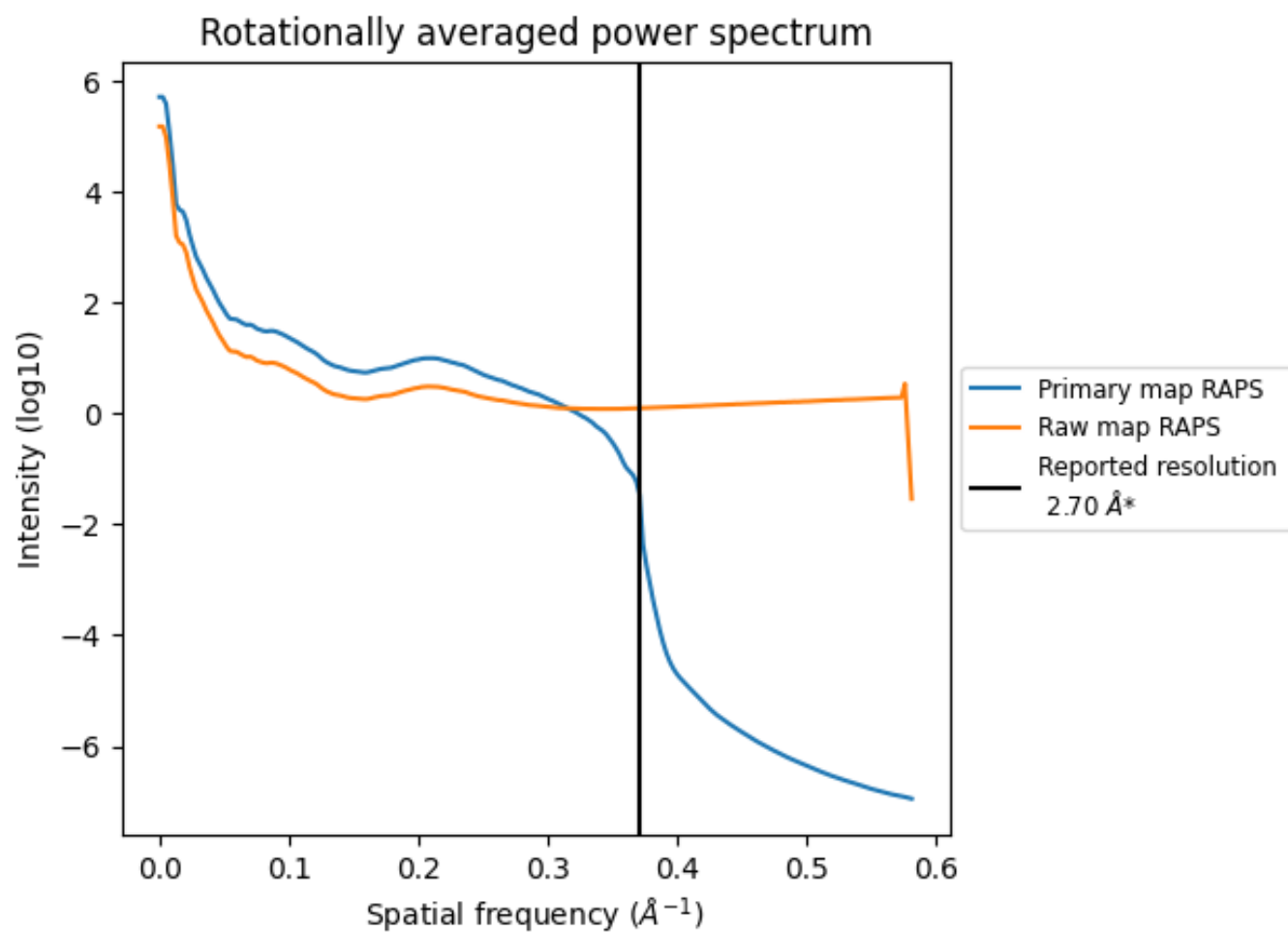
7.2 Volume estimate [i](#)



The volume at the recommended contour level is 268 nm³; this corresponds to an approximate mass of 242 kDa.

The volume estimate graph shows how the enclosed volume varies with the contour level. The recommended contour level is shown as a vertical line and the intersection between the line and the curve gives the volume of the enclosed surface at the given level.

7.3 Rotationally averaged power spectrum ⓘ

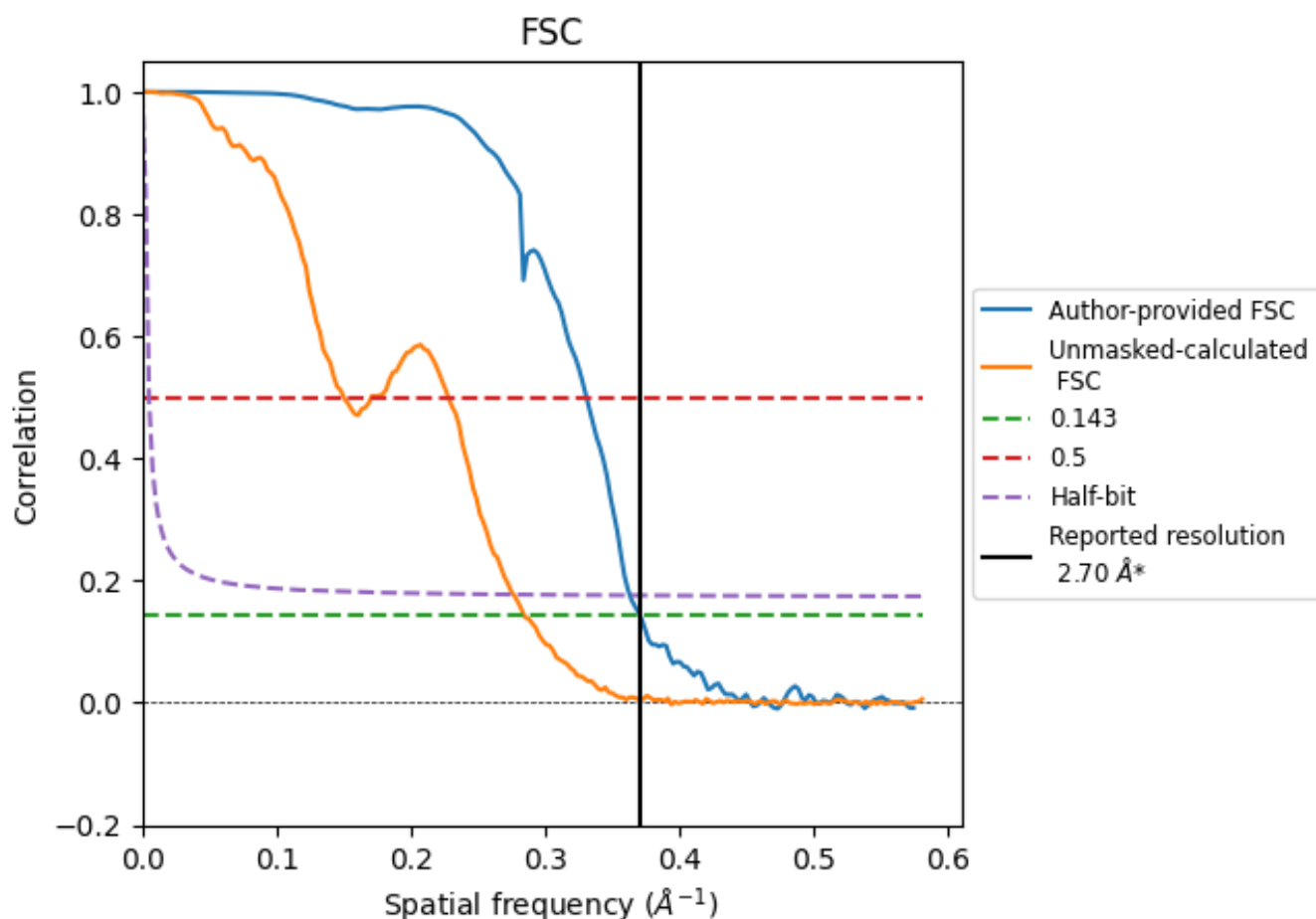


*Reported resolution corresponds to spatial frequency of 0.370 \AA^{-1}

8 Fourier-Shell correlation [i](#)

Fourier-Shell Correlation (FSC) is the most commonly used method to estimate the resolution of single-particle and subtomogram-averaged maps. The shape of the curve depends on the imposed symmetry, mask and whether or not the two 3D reconstructions used were processed from a common reference. The reported resolution is shown as a black line. A curve is displayed for the half-bit criterion in addition to lines showing the 0.143 gold standard cut-off and 0.5 cut-off.

8.1 FSC [i](#)



*Reported resolution corresponds to spatial frequency of 0.370 \AA^{-1}

8.2 Resolution estimates [i](#)

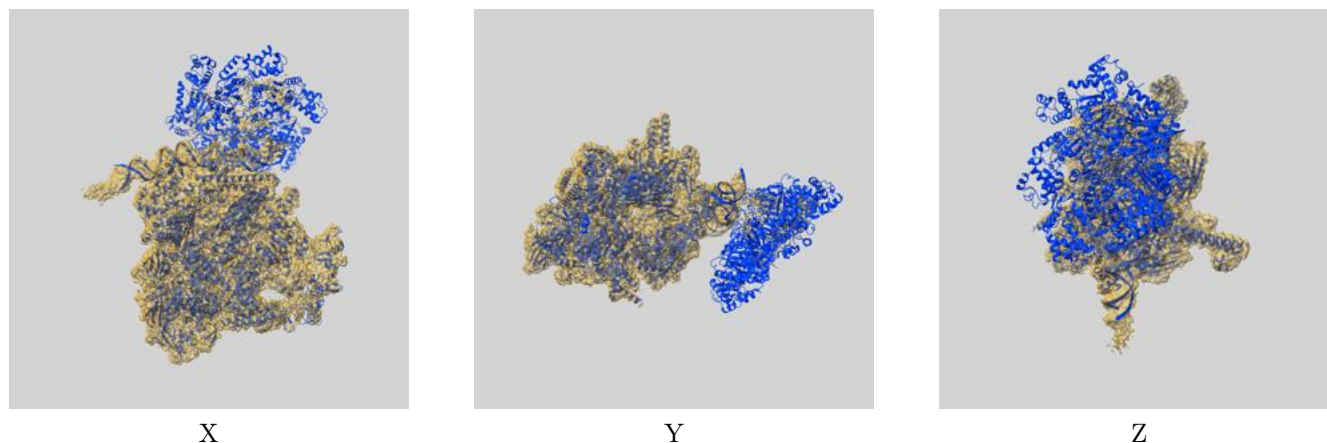
Resolution estimate (Å)	Estimation criterion (FSC cut-off)		
	0.143	0.5	Half-bit
Reported by author	2.70	-	-
Author-provided FSC curve	2.70	3.02	2.75
Unmasked-calculated*	3.51	6.66	3.61

*Resolution estimate based on FSC curve calculated by comparison of deposited half-maps. The value from deposited half-maps intersecting FSC 0.143 CUT-OFF 3.51 differs from the reported value 2.7 by more than 10 %

9 Map-model fit [i](#)

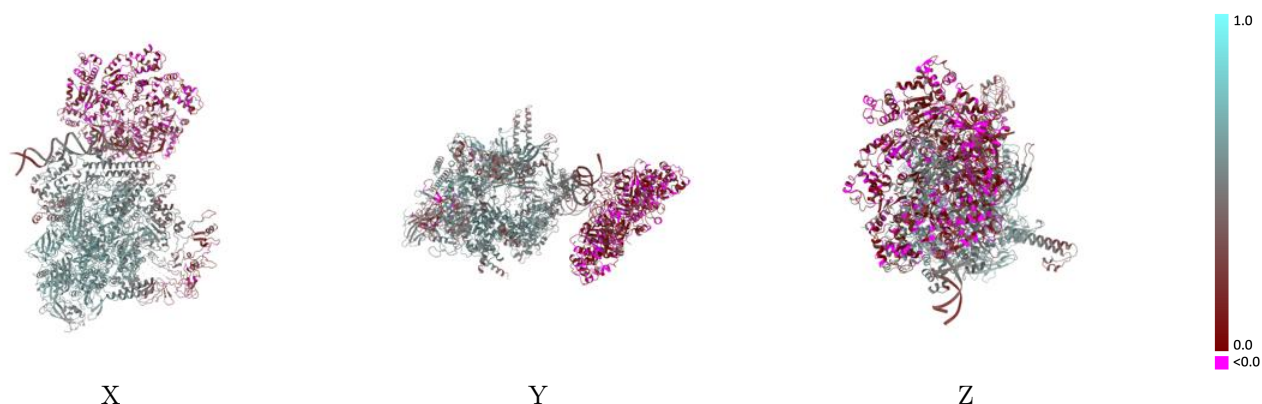
This section contains information regarding the fit between EMDB map EMD-48588 and PDB model 9MSG. Per-residue inclusion information can be found in [section 3](#) on [page 9](#).

9.1 Map-model overlay [i](#)



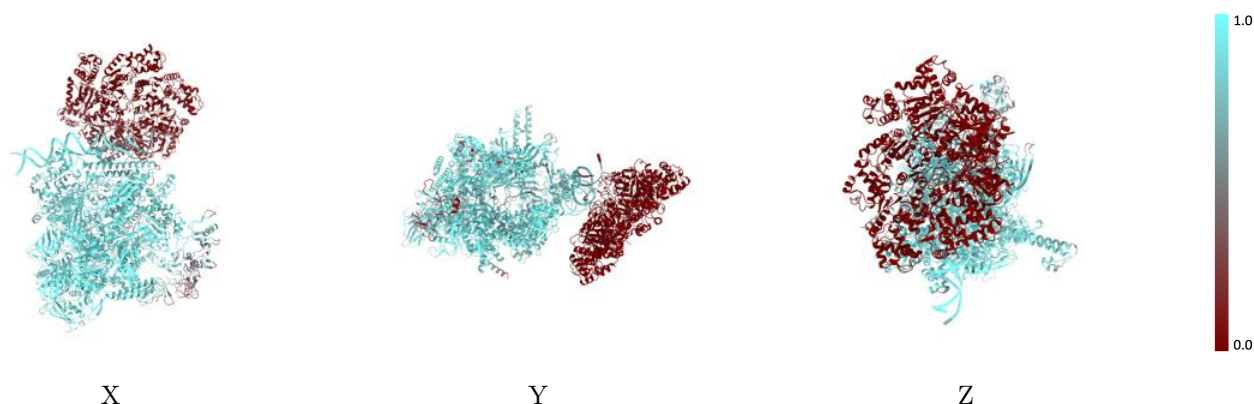
The images above show the 3D surface view of the map at the recommended contour level 0.12 at 50% transparency in yellow overlaid with a ribbon representation of the model coloured in blue. These images allow for the visual assessment of the quality of fit between the atomic model and the map.

9.2 Q-score mapped to coordinate model [i](#)



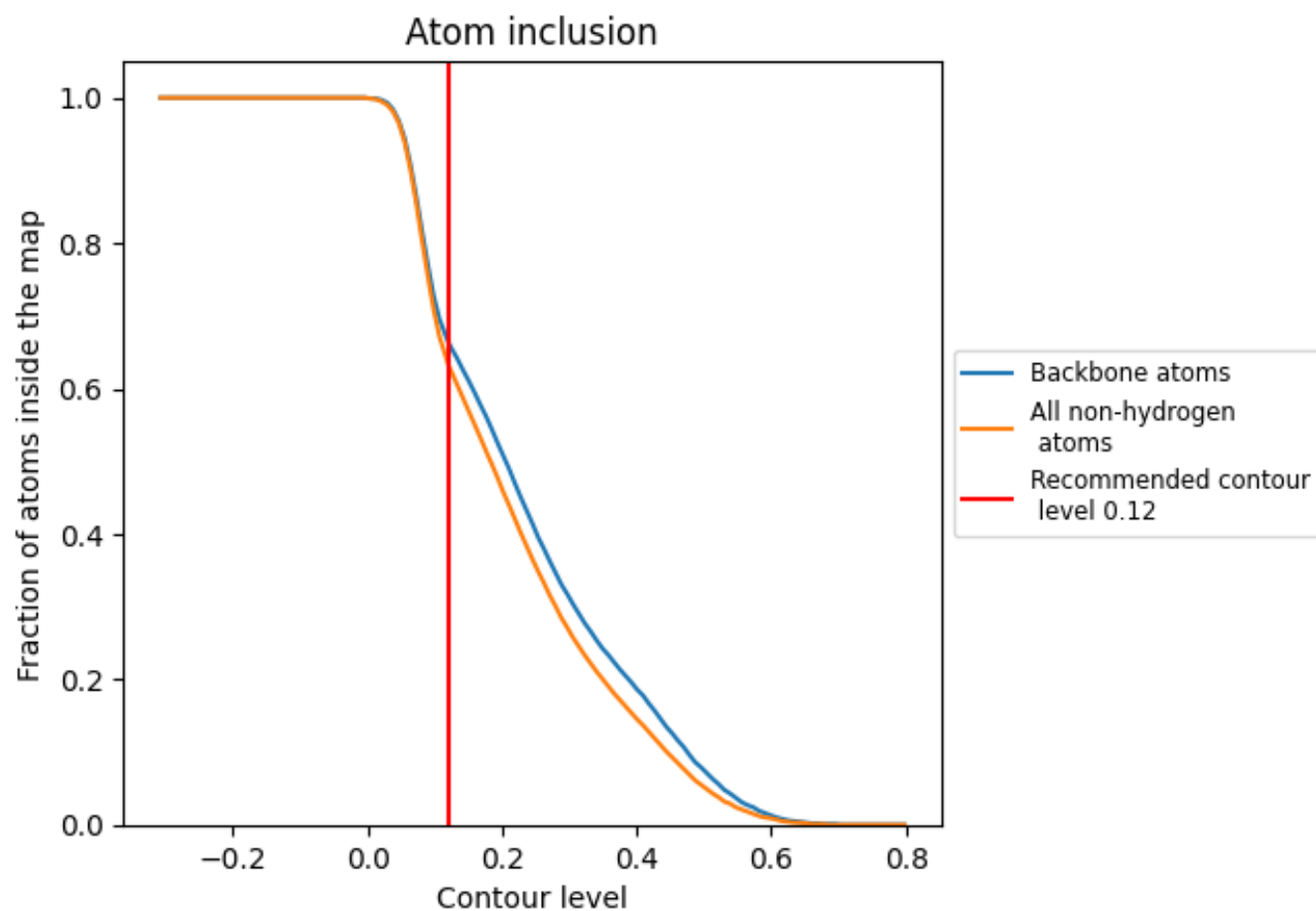
The images above show the model with each residue coloured according to its Q-score. This shows their resolvability in the map with higher Q-score values reflecting better resolvability. Please note: Q-score is calculating the resolvability of atoms, and thus high values are only expected at resolutions at which atoms can be resolved. Low Q-score values may therefore be expected for many entries.

9.3 Atom inclusion mapped to coordinate model [i](#)



The images above show the model with each residue coloured according to its atom inclusion. This shows to what extent they are inside the map at the recommended contour level (0.12).

9.4 Atom inclusion [i](#)



At the recommended contour level, 66% of all backbone atoms, 63% of all non-hydrogen atoms, are inside the map.

9.5 Map-model fit summary ⓘ

The table lists the average atom inclusion at the recommended contour level (0.12) and Q-score for the entire model and for each chain.

Chain	Atom inclusion	Q-score
All	<div></div> 0.6330	<div></div> 0.4010
A	<div></div> 0.0160	<div></div> 0.1130
B	<div></div> 0.0260	<div></div> 0.1060
C	<div></div> 0.0040	<div></div> 0.1120
D	<div></div> 0.0010	<div></div> 0.1020
E	<div></div> 0.0060	<div></div> 0.1200
F	<div></div> 0.0110	<div></div> 0.0740
G	<div></div> 0.9240	<div></div> 0.5680
H	<div></div> 0.9100	<div></div> 0.5400
I	<div></div> 0.9040	<div></div> 0.5370
J	<div></div> 0.8640	<div></div> 0.5130
K	<div></div> 0.8180	<div></div> 0.5480
M	<div></div> 0.8300	<div></div> 0.4890
U	<div></div> 0.8320	<div></div> 0.3440
V	<div></div> 0.8280	<div></div> 0.3430

1.0

0.0

<0.0