



wwPDB EM Validation Summary Report ⓘ

Mar 15, 2026 – 02:29 AM UTC

PDB ID : 7MOP / pdb_00007mop
EMDB ID : EMD-23925
Title : Cryo-EM structure of human HUWE1 in complex with DDIT4
Authors : Hunkeler, M.; Fischer, E.S.
Deposited on : 2021-05-03
Resolution : 3.30 Å (reported)
Based on initial model : 7JQ9

This is a wwPDB EM Validation Summary Report for a publicly released PDB entry.

We welcome your comments at validation@mail.wwpdb.org

A user guide is available at

<https://www.wwpdb.org/validation/2017/EMValidationReportHelp>

with specific help available everywhere you see the ⓘ symbol.

The types of validation reports are described at

<http://www.wwpdb.org/validation/2017/FAQs#types>.

The following versions of software and data (see [references ⓘ](#)) were used in the production of this report:

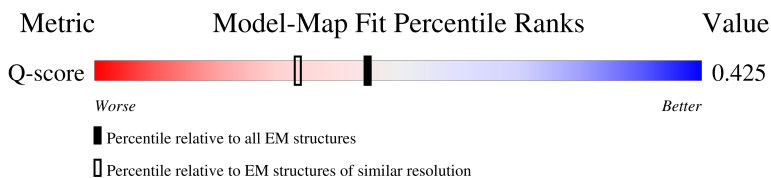
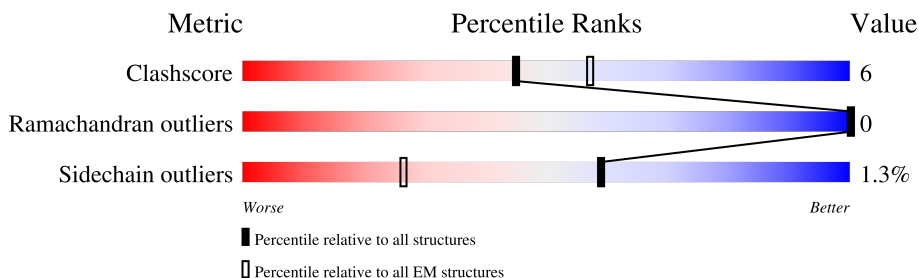
EMDB validation analysis : 0.0.1.dev132
MolProbity : 4-5-2 with Phenix2.0
Percentile statistics : 20250101.v01 (using entries in the PDB archive January 1st 2025)
EM percentile statistics : 202505.v01 (Using data in the EMDB archive up until May 2025)
MapQ : 1.9.13
Ideal geometry (proteins) : Engh & Huber (2001)
Ideal geometry (DNA, RNA) : Parkinson et al. (1996)
Validation Pipeline (wwPDB-VP) : 2.49

1 Overall quality at a glance

The following experimental techniques were used to determine the structure:
ELECTRON MICROSCOPY

The reported resolution of this entry is 3.30 Å.

Percentile scores (ranging between 0-100) for global validation metrics of the entry are shown in the following graphic. The table shows the number of entries on which the scores are based.



Metric	Whole archive (#Entries)	EM structures (#Entries)	Similar EM resolution (#Entries, resolution range(Å))
Clashscore	229148	23984	-
Ramachandran outliers	224038	23583	-
Sidechain outliers	223484	23102	-
Q-score	-	25397	15087 (2.80 - 3.80)

The table below summarises the geometric issues observed across the polymeric chains and their fit to the map. The red, orange, yellow and green segments of the bar indicate the fraction of residues that contain outliers for ≥ 3 , 2, 1 and 0 types of geometric quality criteria respectively. A grey segment represents the fraction of residues that are not modelled. The numeric value for each fraction is indicated below the corresponding segment, with a dot representing fractions $\leq 5\%$. The upper red bar (where present) indicates the fraction of residues that have poor fit to the EM map (all-atom inclusion $< 40\%$). The numeric value is given above the bar.

Mol	Chain	Length	Quality of chain
1	A	4411	<p>11% (red), 46% (green), 9% (yellow), 45% (grey)</p>
2	B	259	<p>• (red), 97% (grey)</p>

2 Entry composition

There are 2 unique types of molecules in this entry. The entry contains 39049 atoms, of which 19681 are hydrogens and 0 are deuteriums.

In the tables below, the AltConf column contains the number of residues with at least one atom in alternate conformation and the Trace column contains the number of residues modelled with at most 2 atoms.

- Molecule 1 is a protein called E3 ubiquitin-protein ligase HUWE1.

Mol	Chain	Residues	Atoms					AltConf	Trace	
			Total	C	H	N	O			S
1	A	2445	38929	12313	19625	3314	3555	122	0	0

There are 37 discrepancies between the modelled and reference sequences:

Chain	Residue	Modelled	Actual	Comment	Reference
A	-36	MET	-	expression tag	UNP Q7Z6Z7
A	-35	ASP	-	expression tag	UNP Q7Z6Z7
A	-34	TYR	-	expression tag	UNP Q7Z6Z7
A	-33	LYS	-	expression tag	UNP Q7Z6Z7
A	-32	ASP	-	expression tag	UNP Q7Z6Z7
A	-31	ASP	-	expression tag	UNP Q7Z6Z7
A	-30	ASP	-	expression tag	UNP Q7Z6Z7
A	-29	ASP	-	expression tag	UNP Q7Z6Z7
A	-28	LYS	-	expression tag	UNP Q7Z6Z7
A	-27	LEU	-	expression tag	UNP Q7Z6Z7
A	-26	ALA	-	expression tag	UNP Q7Z6Z7
A	-25	ALA	-	expression tag	UNP Q7Z6Z7
A	-24	ALA	-	expression tag	UNP Q7Z6Z7
A	-23	ASN	-	expression tag	UNP Q7Z6Z7
A	-22	SER	-	expression tag	UNP Q7Z6Z7
A	-21	SER	-	expression tag	UNP Q7Z6Z7
A	-20	ILE	-	expression tag	UNP Q7Z6Z7
A	-19	ASP	-	expression tag	UNP Q7Z6Z7
A	-18	LEU	-	expression tag	UNP Q7Z6Z7
A	-17	ILE	-	expression tag	UNP Q7Z6Z7
A	-16	SER	-	expression tag	UNP Q7Z6Z7
A	-15	THR	-	expression tag	UNP Q7Z6Z7
A	-14	SER	-	expression tag	UNP Q7Z6Z7
A	-13	LEU	-	expression tag	UNP Q7Z6Z7
A	-12	TYR	-	expression tag	UNP Q7Z6Z7
A	-11	LYS	-	expression tag	UNP Q7Z6Z7
A	-10	LYS	-	expression tag	UNP Q7Z6Z7
A	-9	ALA	-	expression tag	UNP Q7Z6Z7

Continued on next page...

Continued from previous page...

Chain	Residue	Modelled	Actual	Comment	Reference
A	-8	GLY	-	expression tag	UNP Q7Z6Z7
A	-7	PHE	-	expression tag	UNP Q7Z6Z7
A	-6	LYS	-	expression tag	UNP Q7Z6Z7
A	-5	GLY	-	expression tag	UNP Q7Z6Z7
A	-4	THR	-	expression tag	UNP Q7Z6Z7
A	-3	ASN	-	expression tag	UNP Q7Z6Z7
A	-2	SER	-	expression tag	UNP Q7Z6Z7
A	-1	VAL	-	expression tag	UNP Q7Z6Z7
A	0	ASP	-	expression tag	UNP Q7Z6Z7

- Molecule 2 is a protein called DNA damage-inducible transcript 4 protein.

Mol	Chain	Residues	Atoms				AltConf	Trace	
			Total	C	H	N	O		
2	B	7	120	42	56	11	11	0	0

There are 27 discrepancies between the modelled and reference sequences:

Chain	Residue	Modelled	Actual	Comment	Reference
B	-26	MET	-	expression tag	UNP Q9NX09
B	-25	ASP	-	expression tag	UNP Q9NX09
B	-24	SER	-	expression tag	UNP Q9NX09
B	-23	ALA	-	expression tag	UNP Q9NX09
B	-22	TRP	-	expression tag	UNP Q9NX09
B	-21	SER	-	expression tag	UNP Q9NX09
B	-20	HIS	-	expression tag	UNP Q9NX09
B	-19	PRO	-	expression tag	UNP Q9NX09
B	-18	GLN	-	expression tag	UNP Q9NX09
B	-17	PHE	-	expression tag	UNP Q9NX09
B	-16	GLU	-	expression tag	UNP Q9NX09
B	-15	LYS	-	expression tag	UNP Q9NX09
B	-14	SER	-	expression tag	UNP Q9NX09
B	-13	ALA	-	expression tag	UNP Q9NX09
B	-12	VAL	-	expression tag	UNP Q9NX09
B	-11	ASP	-	expression tag	UNP Q9NX09
B	-10	GLU	-	expression tag	UNP Q9NX09
B	-9	ASN	-	expression tag	UNP Q9NX09
B	-8	LEU	-	expression tag	UNP Q9NX09
B	-7	TYR	-	expression tag	UNP Q9NX09
B	-6	PHE	-	expression tag	UNP Q9NX09
B	-5	GLN	-	expression tag	UNP Q9NX09
B	-4	GLY	-	expression tag	UNP Q9NX09

Continued on next page...

Continued from previous page...

Chain	Residue	Modelled	Actual	Comment	Reference
B	-3	GLY	-	expression tag	UNP Q9NX09
B	-2	GLY	-	expression tag	UNP Q9NX09
B	-1	ARG	-	expression tag	UNP Q9NX09
B	0	THR	-	expression tag	UNP Q9NX09

GLN
LEU
LEU
GLN
GLN
GLU
SER
SER
LEU
ALA
LEU
GLN
PRO
ALA
SER
ARG
LEU
GLY
SER
SER
ARG
THR
ARG
GLN
PRO
ALA
ALA
ARG
LEU
LEU
VAL
MET
PRO
ARG
SER
SER
GLN
LEU
VAL
VAL
GLN
GLN
GLY
LYS
GLY
LYS
GLU
LEU
LEU
LEU
ARG
SER
LEU
ALA
SER
TYR
ALA
ASN
SER
GLU
PRO
PRO
PHE
CYS
GLY
LEU
PRO
GLY
ARG
GLY
SER
ALA
LEU
SER
LEU
ASP
LEU
THR
VAL
CYS
VAL
SER
THR
GLN
PHE
VAL
ILE

HIS
SER
VAL
GLY
GLN
TYR
SER
LEU
ALA
LEU
ASP
GLN
PRO
ALA
SER
SER
LEU
VAL
PRO
THR
PHE
ARG
GLN
LEU
THR
LEU
VAL
VAL
LEU
MET
ARG
PRO
ARG
SER
ASP
SER
SER
ARG
LEU
SER
TRP
PRO
PRO
VAL
VAL
LYS
ILE
GLN
GLY
LEU
PHE
SER
SER
ALA
ALA
ASN
SER
PRO
PRO
PHE
LEU
PRO
PRO
GLY
PHE
SER
SER
GLN
SER
LEU
THR
LEU
SER
THR
GLY
PHE
ARG
VAL
ILE

LYS
LYS
LYS
LEU
TYR
SER
SER
GLU
GLN
LEU
LEU
ILE
GLU
GLU
CYS

4 Experimental information

Property	Value	Source
EM reconstruction method	SINGLE PARTICLE	Depositor
Imposed symmetry	POINT, C1	Depositor
Number of particles used	312798	Depositor
Resolution determination method	FSC 0.143 CUT-OFF	Depositor
CTF correction method	PHASE FLIPPING AND AMPLITUDE CORRECTION; standard correction in Relion	Depositor
Microscope	FEI TITAN KRIOS	Depositor
Voltage (kV)	300	Depositor
Electron dose ($e^-/\text{\AA}^2$)	53.34	Depositor
Minimum defocus (nm)	-1000	Depositor
Maximum defocus (nm)	-2500	Depositor
Magnification	105000	Depositor
Image detector	GATAN K3 BIOQUANTUM (6k x 4k)	Depositor
Maximum map value	0.096	Depositor
Minimum map value	-0.050	Depositor
Average map value	0.000	Depositor
Map value standard deviation	0.002	Depositor
Recommended contour level	0.013	Depositor
Map size (\AA)	300.3, 300.3, 300.3	wwPDB
Map dimensions	364, 364, 364	wwPDB
Map angles ($^\circ$)	90.0, 90.0, 90.0	wwPDB
Pixel spacing (\AA)	0.825, 0.825, 0.825	Depositor

5 Model quality [i](#)

5.1 Standard geometry [i](#)

The Z score for a bond length (or angle) is the number of standard deviations the observed value is removed from the expected value. A bond length (or angle) with $|Z| > 5$ is considered an outlier worth inspection. RMSZ is the root-mean-square of all Z scores of the bond lengths (or angles).

Mol	Chain	Bond lengths		Bond angles	
		RMSZ	# Z >5	RMSZ	# Z >5
1	A	0.24	0/19649	0.48	2/26599 (0.0%)
2	B	0.24	0/66	0.43	0/88
All	All	0.24	0/19715	0.48	2/26687 (0.0%)

There are no bond length outliers.

All (2) bond angle outliers are listed below:

Mol	Chain	Res	Type	Atoms	Z	Observed(°)	Ideal(°)
1	A	144	ARG	CA-CB-CG	-5.27	103.56	114.10
1	A	144	ARG	CB-CG-CD	5.07	122.97	111.30

There are no chirality outliers.

There are no planarity outliers.

5.2 Too-close contacts [i](#)

In the following table, the Non-H and H(model) columns list the number of non-hydrogen atoms and hydrogen atoms in the chain respectively. The H(added) column lists the number of hydrogen atoms added and optimized by MolProbity. The Clashes column lists the number of clashes within the asymmetric unit, whereas Symm-Clashes lists symmetry-related clashes.

Mol	Chain	Non-H	H(model)	H(added)	Clashes	Symm-Clashes
1	A	19304	19625	19682	245	0
2	B	64	56	56	0	0
All	All	19368	19681	19738	245	0

The all-atom clashscore is defined as the number of clashes found per 1000 atoms (including hydrogen atoms). The all-atom clashscore for this structure is 6.

The worst 5 of 245 close contacts within the same asymmetric unit are listed below, sorted by their clash magnitude.

Atom-1	Atom-2	Interatomic distance (Å)	Clash overlap (Å)
1:A:3967:ASN:OD1	1:A:3993:ASP:N	2.14	0.78
1:A:116:ILE:O	1:A:120:THR:HG23	1.89	0.73
1:A:263:LEU:HD21	1:A:3294:LEU:HD21	1.71	0.71
1:A:1829:GLU:OE2	1:A:2082:TYR:OH	2.12	0.68
1:A:3288:VAL:HG12	1:A:3300:ILE:HD12	1.76	0.67

There are no symmetry-related clashes.

5.3 Torsion angles [i](#)

5.3.1 Protein backbone [i](#)

In the following table, the Percentiles column shows the percent Ramachandran outliers of the chain as a percentile score with respect to all PDB entries followed by that with respect to all EM entries.

The Analysed column shows the number of residues for which the backbone conformation was analysed, and the total number of residues.

Mol	Chain	Analysed	Favoured	Allowed	Outliers	Percentiles	
1	A	2383/4411 (54%)	2317 (97%)	66 (3%)	0	100	100
2	B	5/259 (2%)	5 (100%)	0	0	100	100
All	All	2388/4670 (51%)	2322 (97%)	66 (3%)	0	100	100

There are no Ramachandran outliers to report.

5.3.2 Protein sidechains [i](#)

In the following table, the Percentiles column shows the percent sidechain outliers of the chain as a percentile score with respect to all PDB entries followed by that with respect to all EM entries.

The Analysed column shows the number of residues for which the sidechain conformation was analysed, and the total number of residues.

Mol	Chain	Analysed	Rotameric	Outliers	Percentiles	
1	A	2166/3839 (56%)	2137 (99%)	29 (1%)	61	74
2	B	7/229 (3%)	7 (100%)	0	100	100
All	All	2173/4068 (53%)	2144 (99%)	29 (1%)	59	74

5 of 29 residues with a non-rotameric sidechain are listed below:

Mol	Chain	Res	Type
1	A	2156	VAL
1	A	4209	LEU
1	A	2235	SER
1	A	3747	ILE
1	A	2228	VAL

Sometimes sidechains can be flipped to improve hydrogen bonding and reduce clashes. 5 of 17 such sidechains are listed below:

Mol	Chain	Res	Type
1	A	3976	HIS
1	A	4208	HIS
1	A	1483	GLN
1	A	1809	GLN
1	A	2223	ASN

5.3.3 RNA [i](#)

There are no RNA molecules in this entry.

5.4 Non-standard residues in protein, DNA, RNA chains [i](#)

There are no non-standard protein/DNA/RNA residues in this entry.

5.5 Carbohydrates [i](#)

There are no oligosaccharides in this entry.

5.6 Ligand geometry [i](#)

There are no ligands in this entry.

5.7 Other polymers [i](#)

There are no such residues in this entry.

5.8 Polymer linkage issues

There are no chain breaks in this entry.

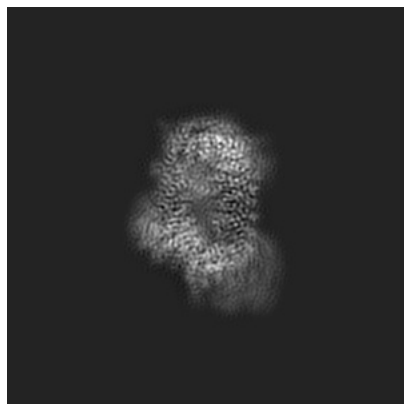
6 Map visualisation [i](#)

This section contains visualisations of the EMDB entry EMD-23925. These allow visual inspection of the internal detail of the map and identification of artifacts.

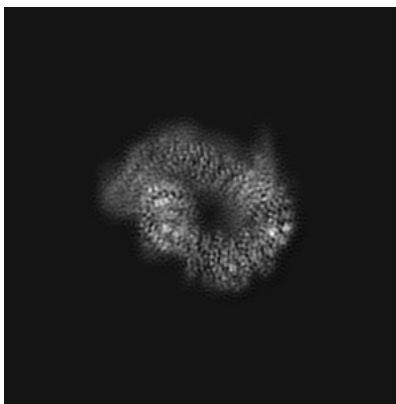
Images derived from a raw map, generated by summing the deposited half-maps, are presented below the corresponding image components of the primary map to allow further visual inspection and comparison with those of the primary map.

6.1 Orthogonal projections [i](#)

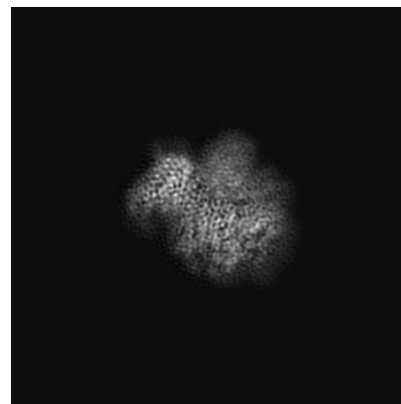
6.1.1 Primary map



X

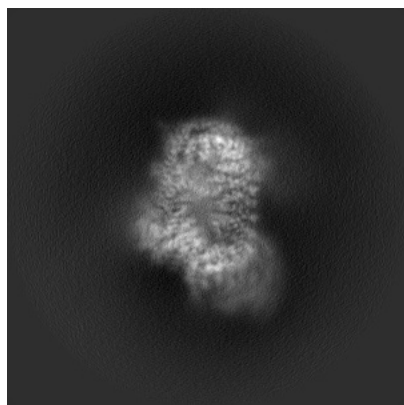


Y

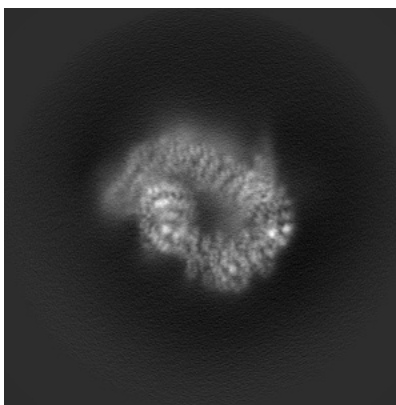


Z

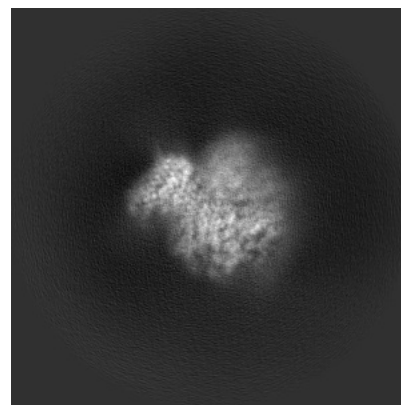
6.1.2 Raw map



X



Y

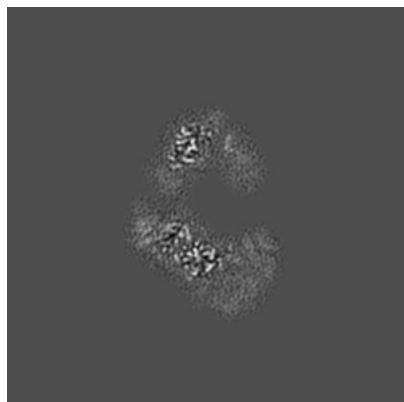


Z

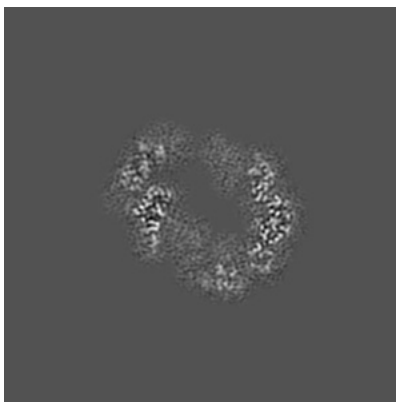
The images above show the map projected in three orthogonal directions.

6.2 Central slices [i](#)

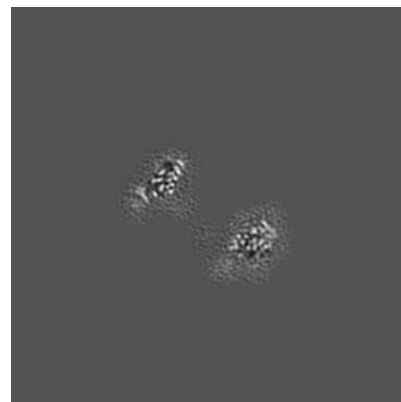
6.2.1 Primary map



X Index: 182

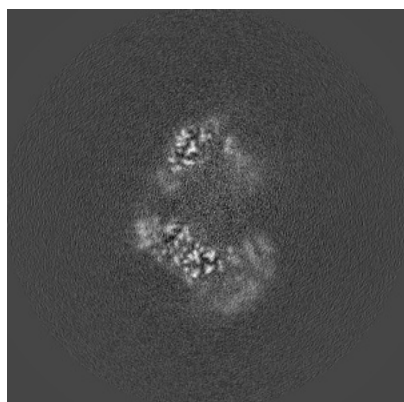


Y Index: 182

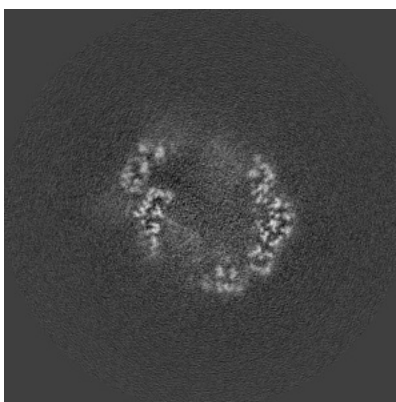


Z Index: 182

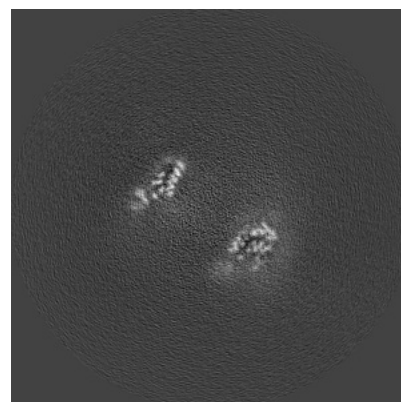
6.2.2 Raw map



X Index: 182



Y Index: 182

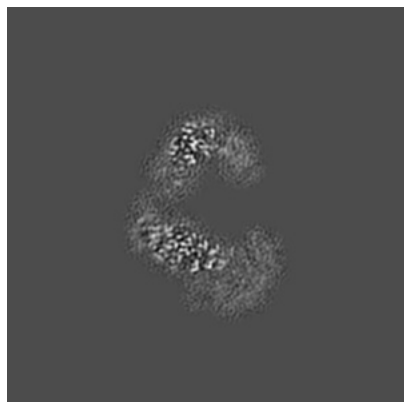


Z Index: 182

The images above show central slices of the map in three orthogonal directions.

6.3 Largest variance slices [i](#)

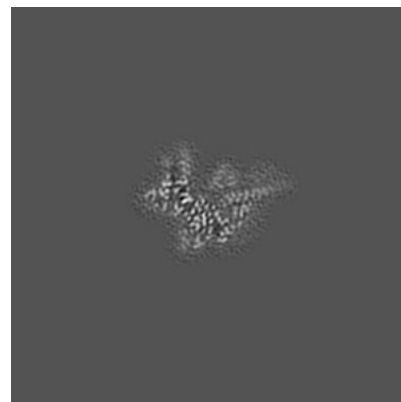
6.3.1 Primary map



X Index: 188

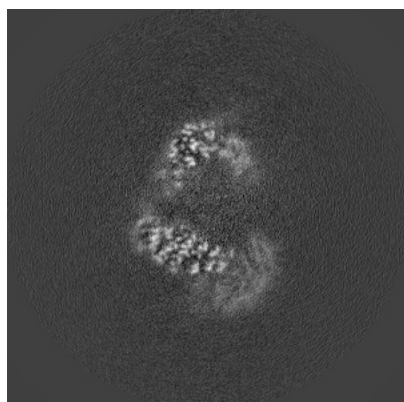


Y Index: 192

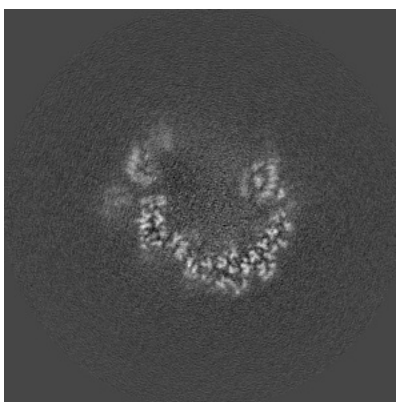


Z Index: 242

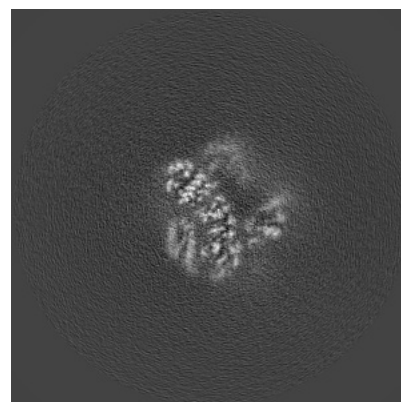
6.3.2 Raw map



X Index: 188



Y Index: 192

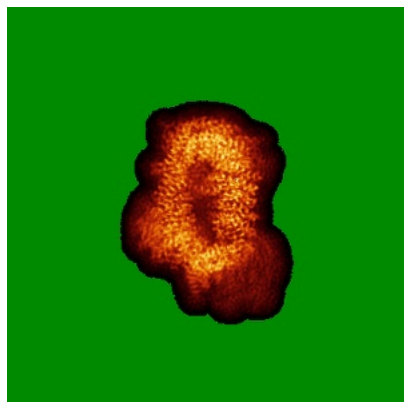


Z Index: 145

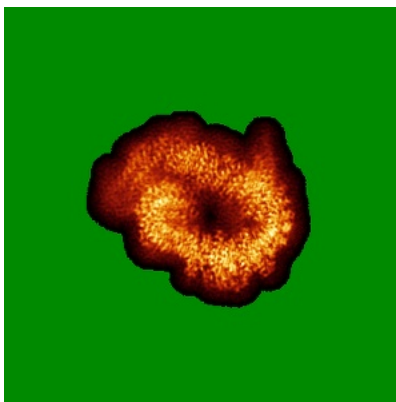
The images above show the largest variance slices of the map in three orthogonal directions.

6.4 Orthogonal standard-deviation projections (False-color) [i](#)

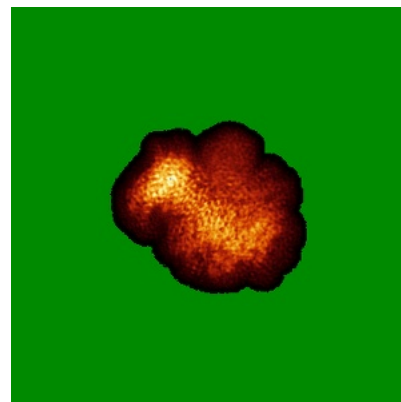
6.4.1 Primary map



X

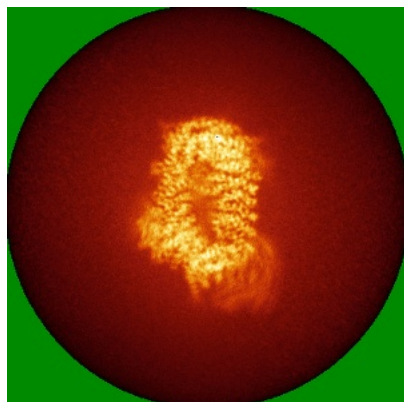


Y

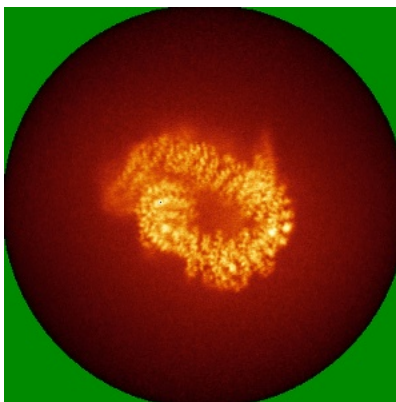


Z

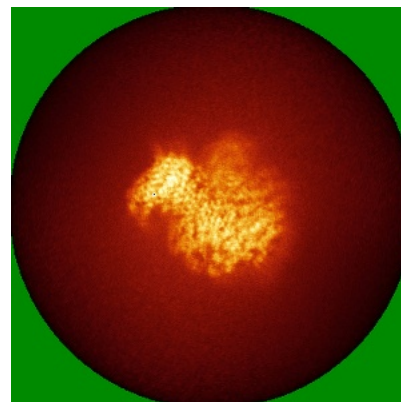
6.4.2 Raw map



X



Y



Z

The images above show the map standard deviation projections with false color in three orthogonal directions. Minimum values are shown in green, max in blue, and dark to light orange shades represent small to large values respectively.

6.5 Orthogonal surface views [i](#)

This section was not generated.

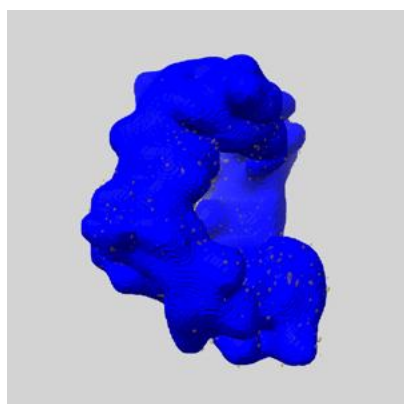
6.6 Mask visualisation [i](#)

This section shows the 3D surface view of the primary map at 50% transparency overlaid with the specified mask at 0% transparency

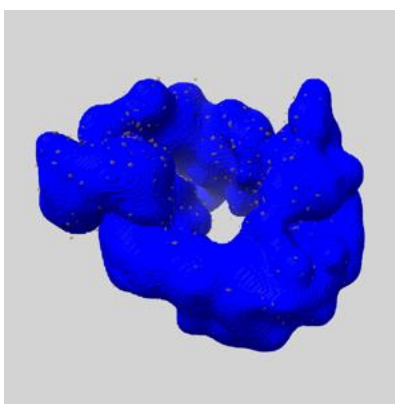
A mask typically either:

- Encompasses the whole structure
- Separates out a domain, a functional unit, a monomer or an area of interest from a larger structure

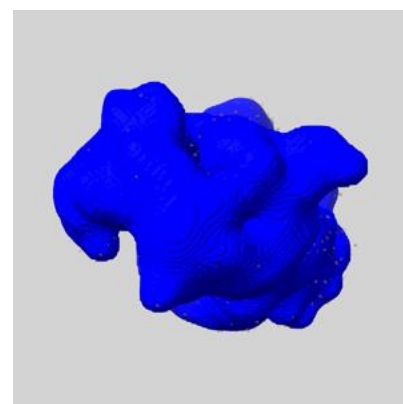
6.6.1 emd_23925_msk_1.map [i](#)



X



Y

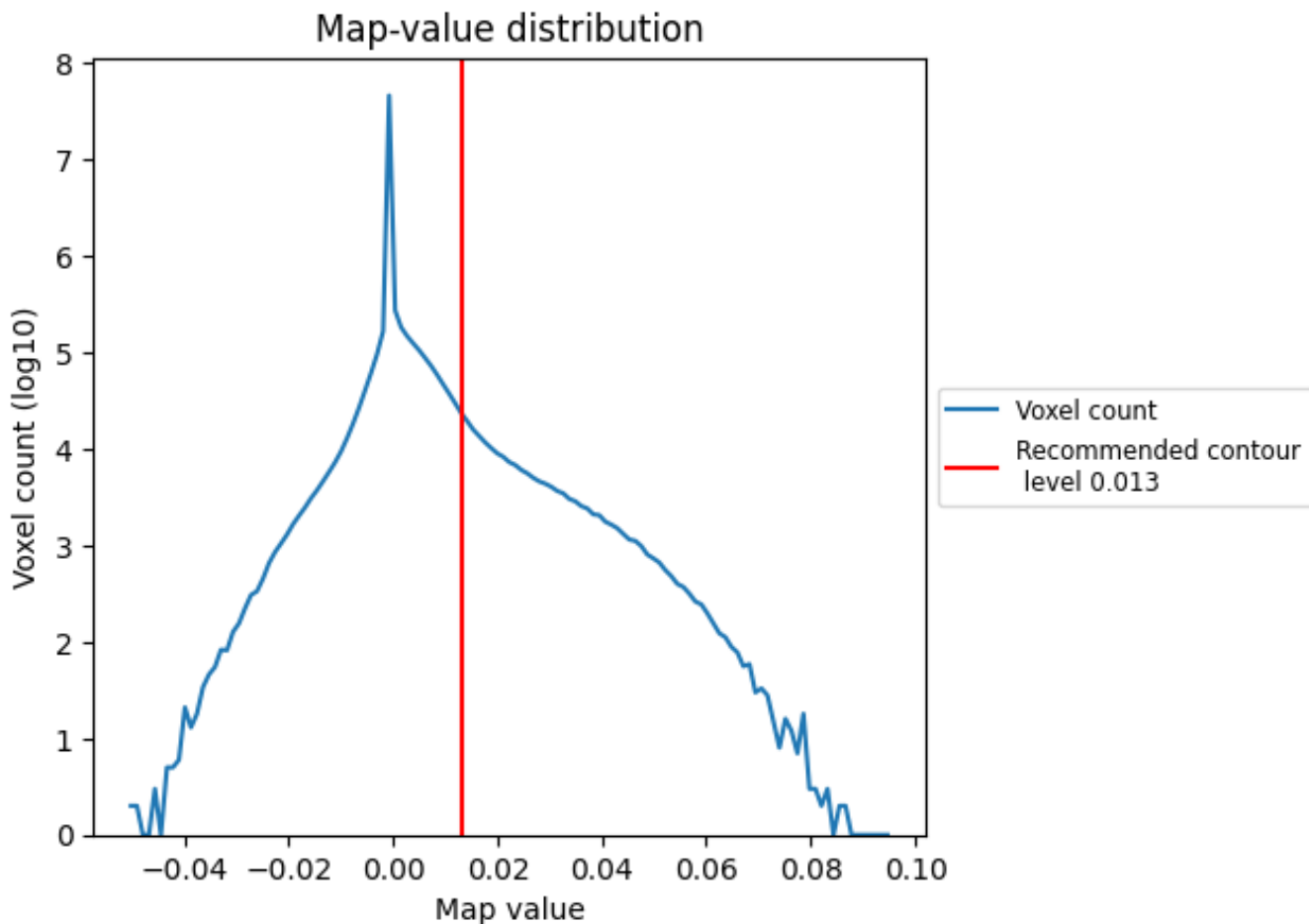


Z

7 Map analysis [i](#)

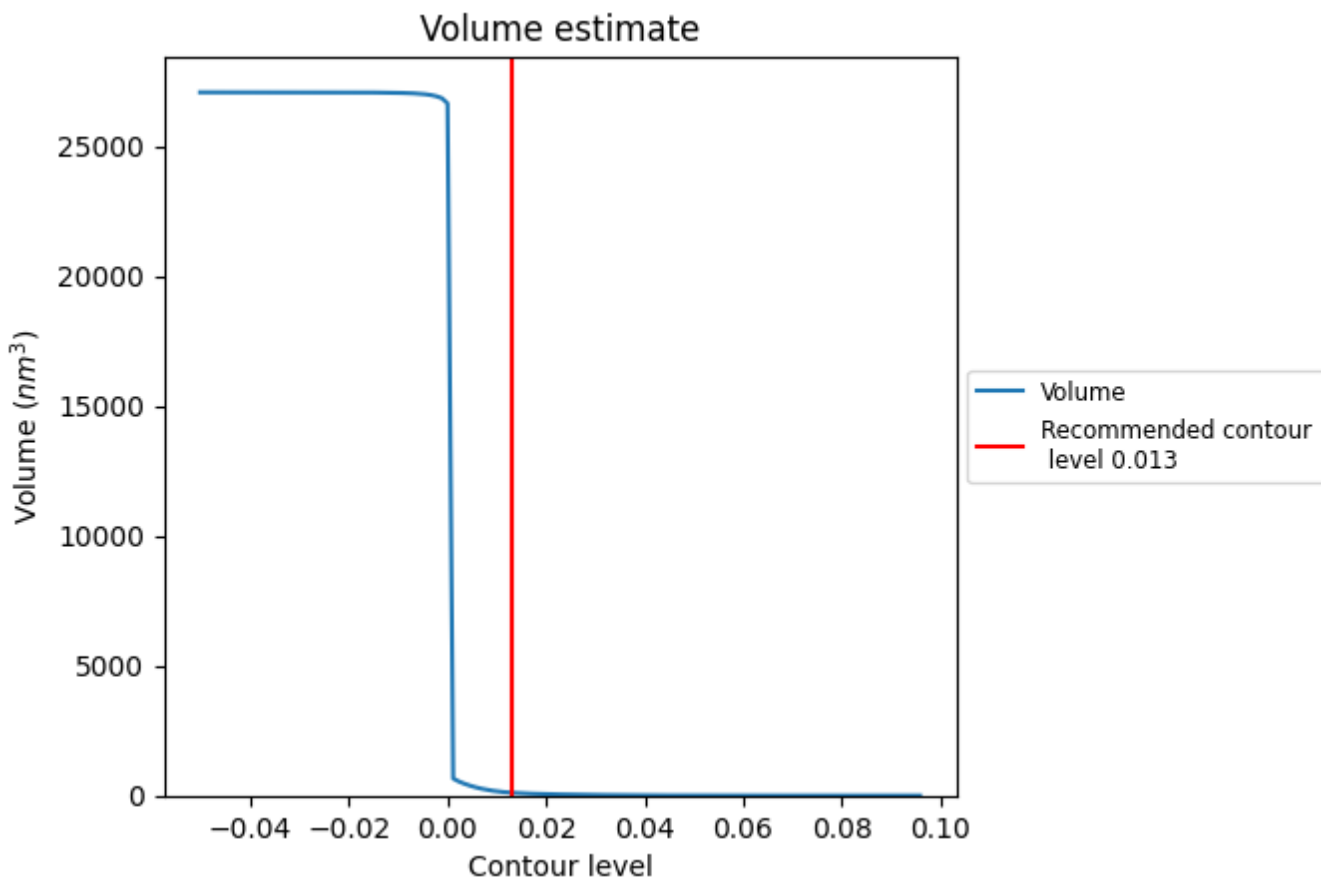
This section contains the results of statistical analysis of the map.

7.1 Map-value distribution [i](#)



The map-value distribution is plotted in 128 intervals along the x-axis. The y-axis is logarithmic. A spike in this graph at zero usually indicates that the volume has been masked.

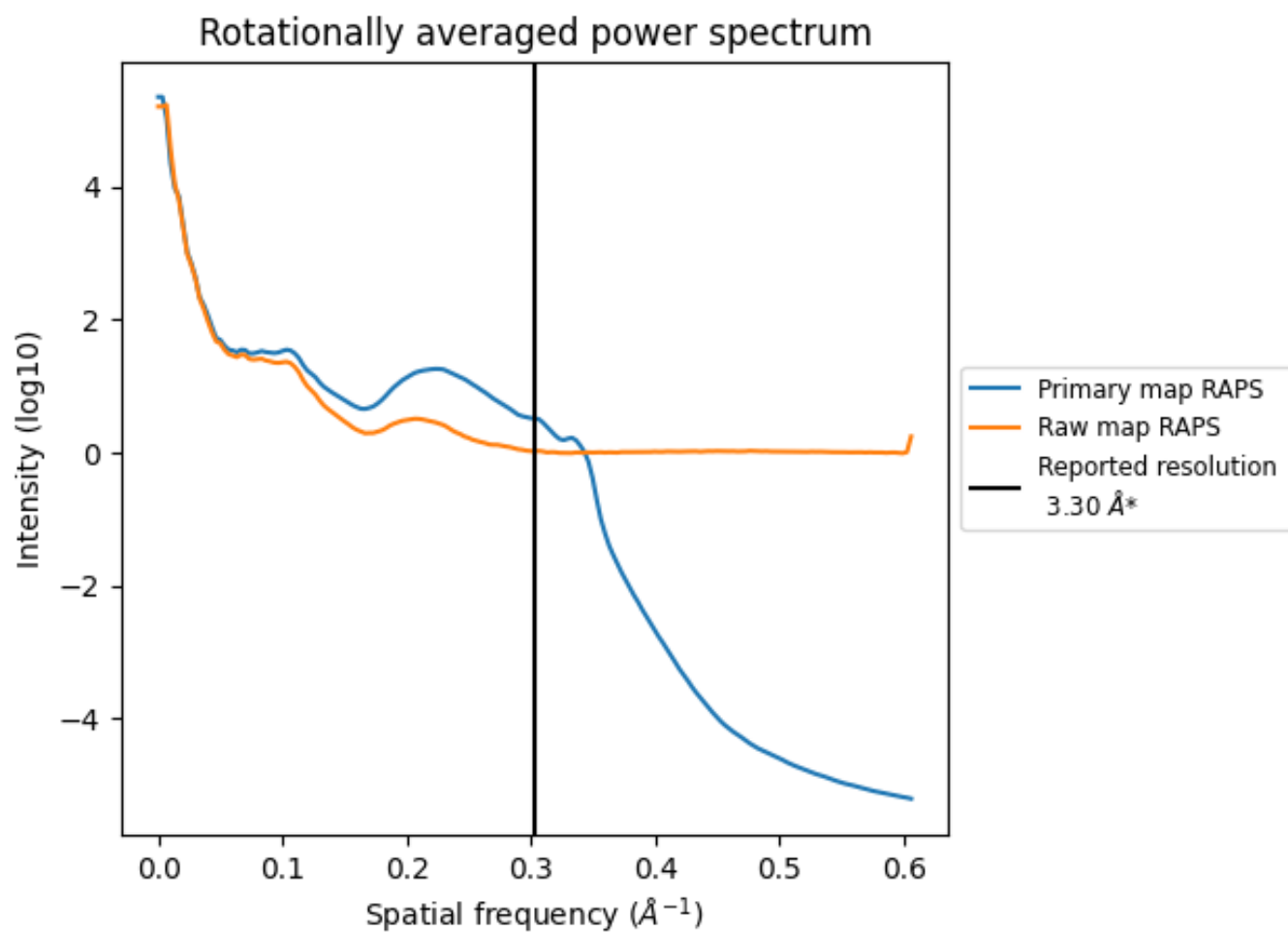
7.2 Volume estimate [i](#)



The volume at the recommended contour level is 110 nm³; this corresponds to an approximate mass of 99 kDa.

The volume estimate graph shows how the enclosed volume varies with the contour level. The recommended contour level is shown as a vertical line and the intersection between the line and the curve gives the volume of the enclosed surface at the given level.

7.3 Rotationally averaged power spectrum [i](#)

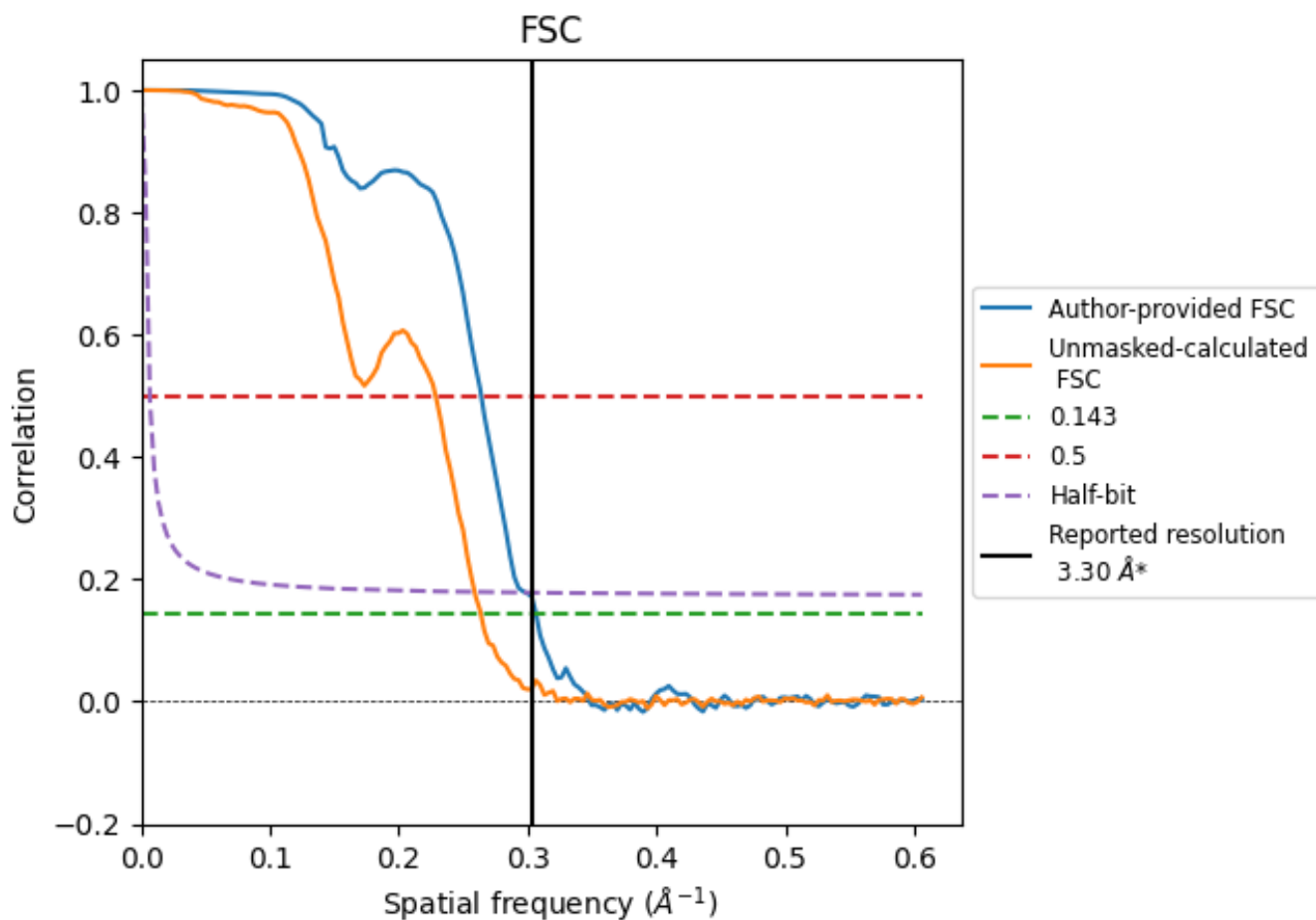


*Reported resolution corresponds to spatial frequency of 0.303 Å⁻¹

8 Fourier-Shell correlation [i](#)

Fourier-Shell Correlation (FSC) is the most commonly used method to estimate the resolution of single-particle and subtomogram-averaged maps. The shape of the curve depends on the imposed symmetry, mask and whether or not the two 3D reconstructions used were processed from a common reference. The reported resolution is shown as a black line. A curve is displayed for the half-bit criterion in addition to lines showing the 0.143 gold standard cut-off and 0.5 cut-off.

8.1 FSC [i](#)



*Reported resolution corresponds to spatial frequency of 0.303 Å⁻¹

8.2 Resolution estimates [i](#)

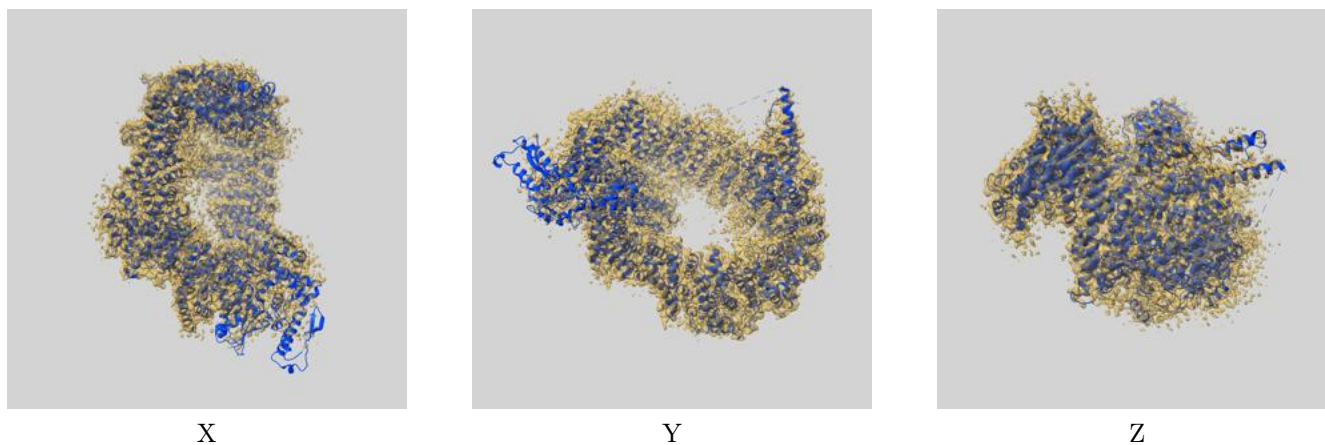
Resolution estimate (Å)	Estimation criterion (FSC cut-off)		
	0.143	0.5	Half-bit
Reported by author	3.30	-	-
Author-provided FSC curve	3.26	3.79	3.35
Unmasked-calculated*	3.79	4.38	3.86

*Resolution estimate based on FSC curve calculated by comparison of deposited half-maps. The value from deposited half-maps intersecting FSC 0.143 CUT-OFF 3.79 differs from the reported value 3.3 by more than 10 %

9 Map-model fit [i](#)

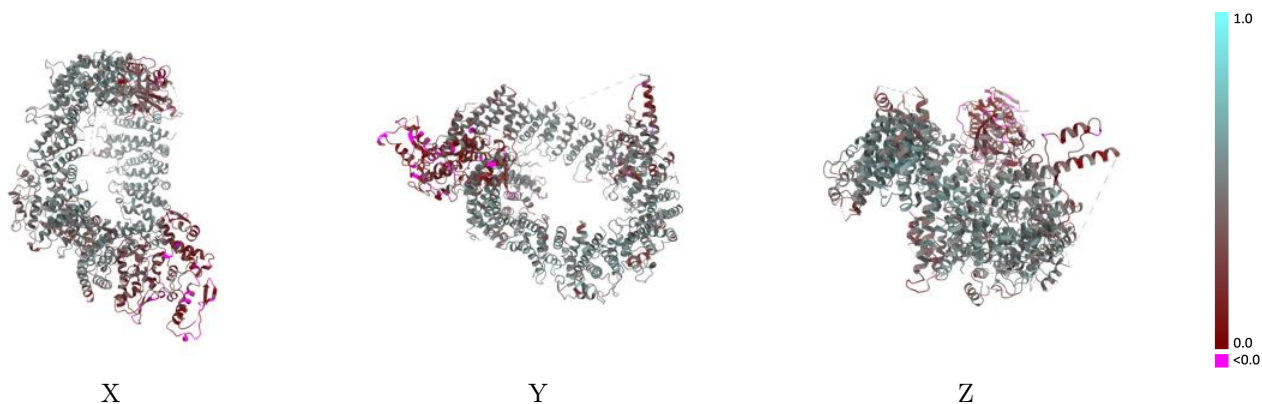
This section contains information regarding the fit between EMDB map EMD-23925 and PDB model 7MOP. Per-residue inclusion information can be found in section [3](#) on page [6](#).

9.1 Map-model overlay [i](#)



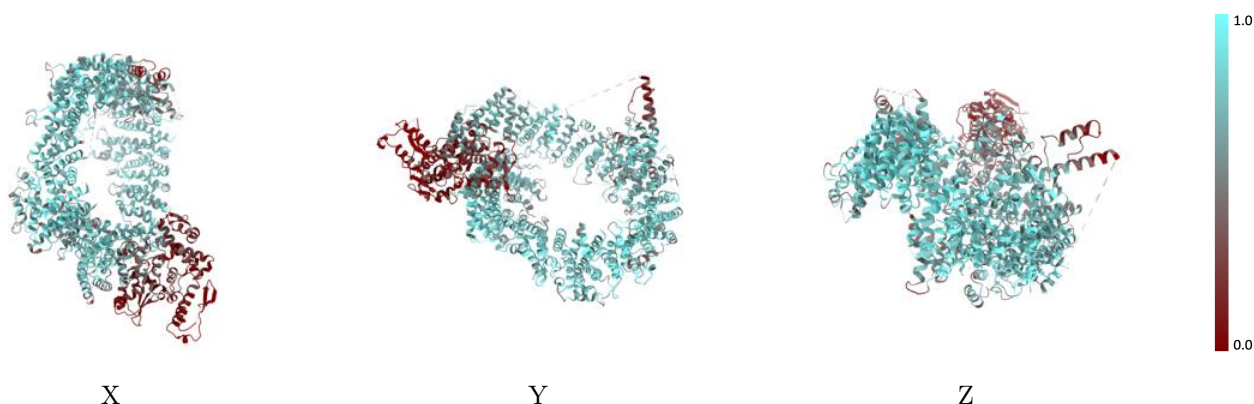
The images above show the 3D surface view of the map at the recommended contour level 0.013 at 50% transparency in yellow overlaid with a ribbon representation of the model coloured in blue. These images allow for the visual assessment of the quality of fit between the atomic model and the map.

9.2 Q-score mapped to coordinate model [i](#)



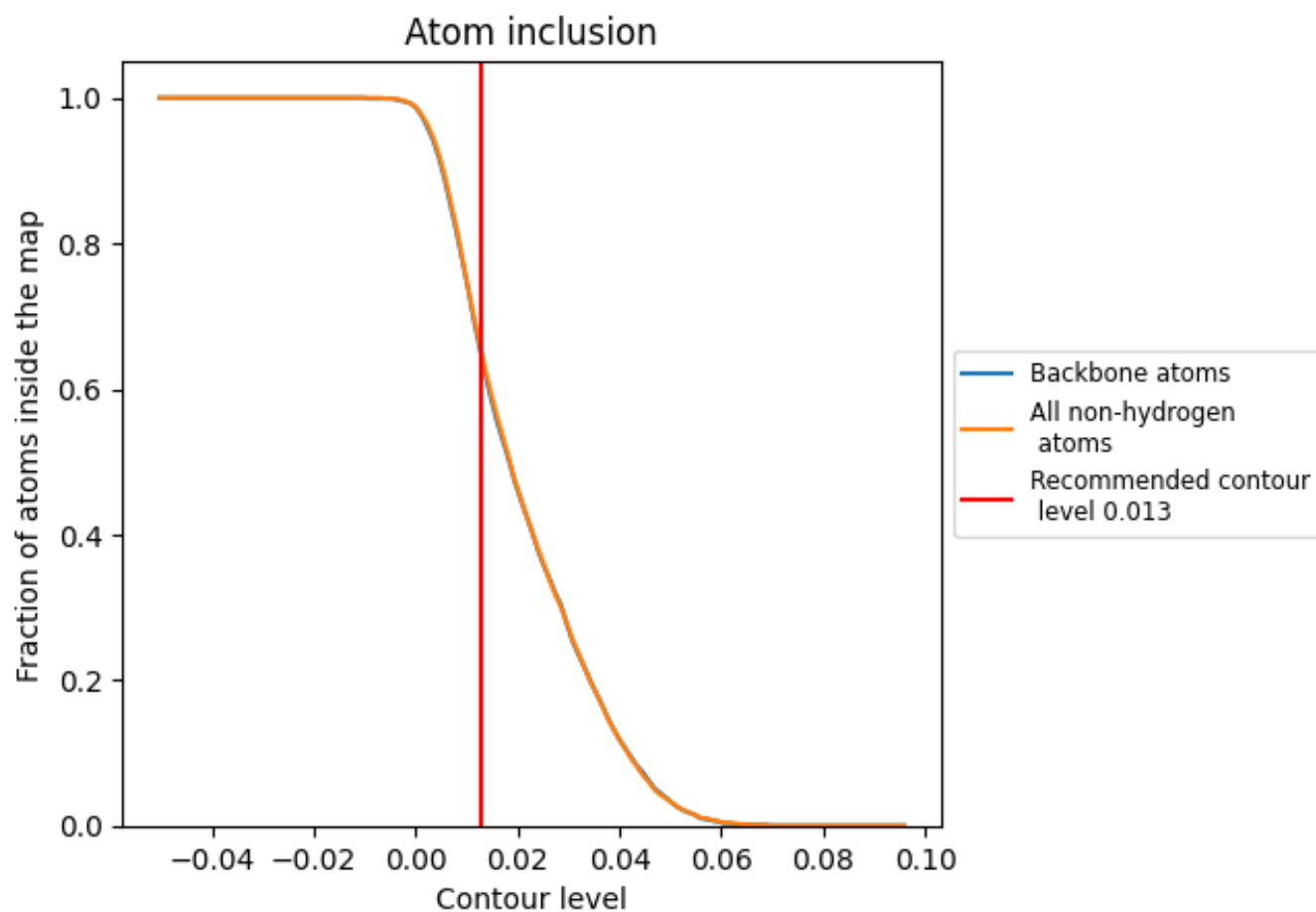
The images above show the model with each residue coloured according to its Q-score. This shows their resolvability in the map with higher Q-score values reflecting better resolvability. Please note: Q-score is calculating the resolvability of atoms, and thus high values are only expected at resolutions at which atoms can be resolved. Low Q-score values may therefore be expected for many entries.

9.3 Atom inclusion mapped to coordinate model [i](#)



The images above show the model with each residue coloured according to its atom inclusion. This shows to what extent they are inside the map at the recommended contour level (0.013).







9.4 Atom inclusion [i](#)



At the recommended contour level, 64% of all backbone atoms, 65% of all non-hydrogen atoms, are inside the map.

9.5 Map-model fit summary [i](#)

The table lists the average atom inclusion at the recommended contour level (0.013) and Q-score for the entire model and for each chain.

Chain	Atom inclusion	Q-score
All	 0.6470	 0.4250
A	 0.6570	 0.4240
B	 0.8850	 0.5480

