



# wwPDB NMR Structure Validation Summary Report ⓘ

Mar 25, 2026 – 03:41 PM UTC

PDB ID : 2LP2 / pdb\_00002lp2  
BMRB ID : 18230  
Title : Solution structure and dynamics of human S100A1 protein modified at cysteine 85 with homocysteine disulfide bond formation in calcium saturated form  
Authors : Nowakowski, M.E.; Jaremko, L.; Jaremko, M.; Zdanowski, K.; Ejchart, A.  
Deposited on : 2012-01-31

This is a wwPDB NMR Structure Validation Summary Report for a publicly released PDB entry.

We welcome your comments at [validation@mail.wwpdb.org](mailto:validation@mail.wwpdb.org)

A user guide is available at

<https://www.wwpdb.org/validation/2017/NMRValidationReportHelp>

with specific help available everywhere you see the ⓘ symbol.

The types of validation reports are described at

<http://www.wwpdb.org/validation/2017/FAQs#types>.

---

The following versions of software and data (see [references ⓘ](#)) were used in the production of this report:

MolProbity : 4-5-2 with Phenix2.0  
Mogul : 2022.3.0, CSD as543be (2022)  
Percentile statistics : 20250101.v01 (using entries in the PDB archive January 1st 2025)  
wwPDB-RCI : v\_1n\_11\_5\_13\_A (Berjanski et al., 2005)  
PANAV : Wang et al. (2010)  
wwPDB-ShiftChecker : v1.2  
Ideal geometry (proteins) : Engh & Huber (2001)  
Ideal geometry (DNA, RNA) : Parkinson et al. (1996)  
Validation Pipeline (wwPDB-VP) : 2.49

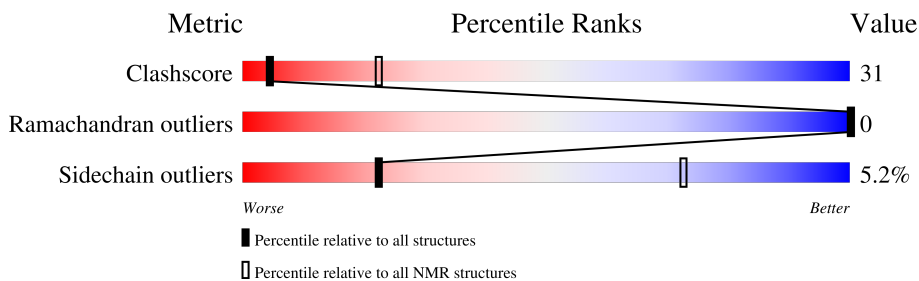
# 1 Overall quality at a glance

The following experimental techniques were used to determine the structure:

*SOLUTION NMR*

The overall completeness of chemical shifts assignment is 44%.

Percentile scores (ranging between 0-100) for global validation metrics of the entry are shown in the following graphic. The table shows the number of entries on which the scores are based.



Metric	Whole archive (#Entries)	NMR archive (#Entries)
Clashscore	229148	14424
Ramachandran outliers	224038	12848
Sidechain outliers	223484	12823

The table below summarises the geometric issues observed across the polymeric chains and their fit to the experimental data. The red, orange, yellow and green segments indicate the fraction of residues that contain outliers for  $\geq 3$ , 2, 1 and 0 types of geometric quality criteria. A cyan segment indicates the fraction of residues that are not part of the well-defined cores, and a grey segment represents the fraction of residues that are not modelled. The numeric value for each fraction is indicated below the corresponding segment, with a dot representing fractions  $\leq 5\%$ .

Mol	Chain	Length	Quality of chain
1	A	93	
1	B	93	

## 2 Ensemble composition and analysis i

This entry contains 20 models. Model 4 is the overall representative, medoid model (most similar to other models). The authors have identified model 1 as representative, based on the following criterion: *lowest energy*.

The following residues are included in the computation of the global validation metrics.

Well-defined (core) protein residues			
Well-defined core	Residue range (total)	Backbone RMSD (Å)	Medoid model
1	A:3-A:91, B:3-B:91 (178)	0.45	4

Ill-defined regions of proteins are excluded from the global statistics.

Ligands and non-protein polymers are included in the analysis.

The models can be grouped into 2 clusters. No single-model clusters were found.

Cluster number	Models
1	1, 2, 3, 4, 7, 8, 9, 11, 12, 13, 15, 17, 18, 19
2	5, 6, 10, 14, 16, 20

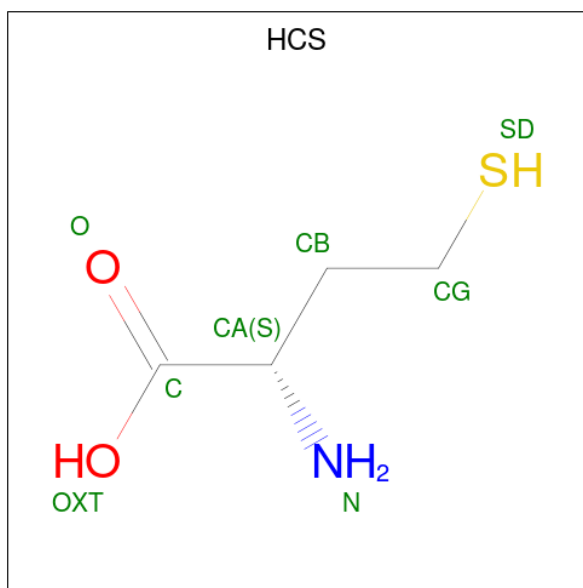
### 3 Entry composition [i](#)

There are 3 unique types of molecules in this entry. The entry contains 2908 atoms, of which 1426 are hydrogens and 0 are deuteriums.

- Molecule 1 is a protein called Protein S100-A1.

Mol	Chain	Residues	Atoms					Trace	
			Total	C	H	N	O		S
1	A	93	1436	461	705	115	152	3	0
1	B	93	1436	461	705	115	152	3	0

- Molecule 2 is 2-AMINO-4-MERCAPTO-BUTYRIC ACID (CCD ID: HCS) (formula: C<sub>4</sub>H<sub>9</sub>NO<sub>2</sub>S).



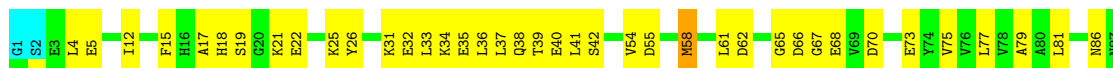
Mol	Chain	Residues	Atoms					
			Total	C	H	N	O	S
2	A	1	16	4	8	1	2	1
2	B	1	16	4	8	1	2	1

- Molecule 3 is CALCIUM ION (CCD ID: CA) (formula: Ca).

Mol	Chain	Residues	Atoms
			Total
3	A	2	Ca 2
3	B	2	Ca 2



Chain B:  51% 44% ..



## 5 Refinement protocol and experimental data overview

The models were refined using the following method: *simulated annealing*.

Of the 198 calculated structures, 20 were deposited, based on the following criterion: *structures with the lowest energy*.

The following table shows the software used for structure solution, optimisation and refinement.

Software name	Classification	Version
X-PLOR NIH	structure solution	
X-PLOR NIH	refinement	
CYANA	structure solution	

The following table shows chemical shift validation statistics as aggregates over all chemical shift files. Detailed validation can be found in section 7 of this report.

Chemical shift file(s)	working_cs.cif
Number of chemical shift lists	1
Total number of shifts	1067
Number of shifts mapped to atoms	1067
Number of unparsed shifts	0
Number of shifts with mapping errors	0
Number of shifts with mapping warnings	0
Assignment completeness (well-defined parts)	44%

## 6 Model quality i

### 6.1 Standard geometry i

Bond lengths and bond angles in the following residue types are not validated in this section: CA, HCS

The Z score for a bond length (or angle) is the number of standard deviations the observed value is removed from the expected value. A bond length (or angle) with  $|Z| > 5$  is considered an outlier worth inspection. RMSZ is the (average) root-mean-square of all Z scores of the bond lengths (or angles).

Mol	Chain	Bond lengths		Bond angles	
		RMSZ	#Z>5	RMSZ	#Z>5
1	A	0.72±0.01	0±0/718 ( 0.0± 0.0%)	1.14±0.02	2±1/968 ( 0.2± 0.1%)
1	B	0.72±0.01	0±0/718 ( 0.0± 0.0%)	1.14±0.02	2±1/968 ( 0.2± 0.1%)
All	All	0.72	0/28720 ( 0.0%)	1.14	79/38720 ( 0.2%)

There are no bond-length outliers.

5 of 6 unique angle outliers are listed below. They are sorted according to the Z-score of the worst occurrence in the ensemble.

Mol	Chain	Res	Type	Atoms	Z	Observed(°)	Ideal(°)	Models	
								Worst	Total
1	A	15	PHE	CA-CB-CG	-6.72	107.08	113.80	14	19
1	B	15	PHE	CA-CB-CG	-6.63	107.17	113.80	14	20
1	B	18	HIS	CA-CB-CG	-6.34	107.46	113.80	2	16
1	A	18	HIS	CA-CB-CG	-6.19	107.61	113.80	2	16
1	A	65	GLY	N-CA-C	-5.31	107.99	115.32	4	4

There are no chirality outliers.

There are no planarity outliers.

### 6.2 Too-close contacts i

In the following table, the Non-H and H(model) columns list the number of non-hydrogen atoms and hydrogen atoms in each chain respectively. The H(added) column lists the number of hydrogen atoms added and optimized by MolProbity. The Clashes column lists the number of clashes averaged over the ensemble.

Mol	Chain	Non-H	H(model)	H(added)	Clashes
1	A	707	686	684	48±8
1	B	707	686	684	49±8

*Continued on next page...*

Continued from previous page...

Mol	Chain	Non-H	H(model)	H(added)	Clashes
2	A	8	8	7	0±1
2	B	8	8	7	0±1
All	All	28680	27760	27640	1759

The all-atom clashscore is defined as the number of clashes found per 1000 atoms (including hydrogen atoms). The all-atom clashscore for this structure is 31.

5 of 292 unique clashes are listed below, sorted by their clash magnitude.

Atom-1	Atom-2	Clash(Å)	Distance(Å)	Models	
				Worst	Total
1:A:18:HIS:ND1	1:A:28:LEU:HD11	0.94	1.77	6	4
1:B:18:HIS:ND1	1:B:28:LEU:HD11	0.93	1.78	6	4
1:A:26:TYR:HH	1:B:90:TRP:CG	0.90	1.83	9	12
1:B:58:MET:HE1	1:B:67:GLY:O	0.85	1.70	19	16
1:A:58:MET:HE1	1:A:67:GLY:O	0.85	1.72	18	16

## 6.3 Torsion angles [i](#)

### 6.3.1 Protein backbone [i](#)

In the following table, the Percentiles column shows the percent Ramachandran outliers of the chain as a percentile score with respect to all PDB entries followed by that with respect to all NMR entries. The Analysed column shows the number of residues for which the backbone conformation was analysed and the total number of residues.

Mol	Chain	Analysed	Favoured	Allowed	Outliers	Percentiles	
1	A	89/93 (96%)	86±1 (97±1%)	2±1 (3±1%)	0±0 (0±0%)	100	100
1	B	89/93 (96%)	86±1 (97±1%)	2±1 (3±1%)	0±0 (0±0%)	100	100
All	All	3560/3720 (96%)	3460 (97%)	100 (3%)	0 (0%)	100	100

There are no Ramachandran outliers.

### 6.3.2 Protein sidechains [i](#)

In the following table, the Percentiles column shows the percent sidechain outliers of the chain as a percentile score with respect to all PDB entries followed by that with respect to all NMR entries. The Analysed column shows the number of residues for which the sidechain conformation was analysed and the total number of residues.

Mol	Chain	Analysed	Rotameric	Outliers	Percentiles	
1	A	77/80 (96%)	73±1 (95±1%)	4±1 (5±1%)	22	72
1	B	77/80 (96%)	73±1 (95±1%)	4±1 (5±1%)	22	72
All	All	3080/3200 (96%)	2920 (95%)	160 (5%)	22	72

5 of 26 unique residues with a non-rotameric sidechain are listed below. They are sorted by the frequency of occurrence in the ensemble.

Mol	Chain	Res	Type	Models (Total)
1	A	75	VAL	20
1	B	75	VAL	20
1	A	33	LEU	15
1	B	33	LEU	15
1	A	58	MET	13

### 6.3.3 RNA [i](#)

There are no RNA molecules in this entry.

## 6.4 Non-standard residues in protein, DNA, RNA chains [i](#)

There are no non-standard protein/DNA/RNA residues in this entry.

## 6.5 Carbohydrates [i](#)

There are no oligosaccharides in this entry.

## 6.6 Ligand geometry [i](#)

Of 6 ligands modelled in this entry, 4 are monoatomic - leaving 2 for Mogul analysis.

In the following table, the Counts columns list the number of bonds for which Mogul statistics could be retrieved, the number of bonds that are observed in the model and the number of bonds that are defined in the chemical component dictionary. The Link column lists molecule types, if any, to which the group is linked. The Z score for a bond length is the number of standard deviations the observed value is removed from the expected value. A bond length with  $|Z| > 2$  is considered an outlier worth inspection. RMSZ is the average root-mean-square of all Z scores of the bond lengths.

Mol	Type	Chain	Res	Link	Bond lengths		
					Counts	RMSZ	#Z>2
2	HCS	A	201	1	6,7,7	1.08±0.01	1±0 (16±0%)

Mol	Type	Chain	Res	Link	Counts	Bond lengths	
						RMSZ	#Z>2
2	HCS	B	201	1	6,7,7	1.08±0.01	1±0 (16±0%)

In the following table, the Counts columns list the number of angles for which Mogul statistics could be retrieved, the number of angles that are observed in the model and the number of angles that are defined in the chemical component dictionary. The Link column lists molecule types, if any, to which the group is linked. The Z score for a bond angle is the number of standard deviations the observed value is removed from the expected value. A bond angle with  $|Z| > 2$  is considered an outlier worth inspection. RMSZ is the average root-mean-square of all Z scores of the bond angles.

Mol	Type	Chain	Res	Link	Counts	Bond angles	
						RMSZ	#Z>2
2	HCS	A	201	1	5,8,8	2.09±0.02	2±0 (40±0%)
2	HCS	B	201	1	5,8,8	2.08±0.02	2±0 (40±0%)

In the following table, the Chirals column lists the number of chiral outliers, the number of chiral centers analysed, the number of these observed in the model and the number defined in the chemical component dictionary. Similar counts are reported in the Torsion and Rings columns. '-' means no outliers of that kind were identified.

Mol	Type	Chain	Res	Link	Chirals	Torsions	Rings
2	HCS	A	201	1	-	0±0,7,7,7	-
2	HCS	B	201	1	-	0±0,7,7,7	-

All unique bond outliers are listed below. They are sorted according to the Z-score of the worst occurrence in the ensemble.

Mol	Chain	Res	Type	Atoms	Z	Observed(Å)	Ideal(Å)	Models	
								Worst	Total
2	A	201	HCS	OXT-C	2.61	1.22	1.30	18	20
2	B	201	HCS	OXT-C	2.58	1.22	1.30	18	20

All unique angle outliers are listed below. They are sorted according to the Z-score of the worst occurrence in the ensemble.

Mol	Chain	Res	Type	Atoms	Z	Observed(°)	Ideal(°)	Models	
								Worst	Total
2	A	201	HCS	CB-CG-SD	4.16	109.41	113.74	10	20
2	B	201	HCS	CB-CG-SD	4.13	109.44	113.74	19	20
2	A	201	HCS	CG-CB-CA	2.27	109.44	113.14	1	20
2	B	201	HCS	CG-CB-CA	2.25	109.46	113.14	12	20

There are no chirality outliers.

There are no torsion outliers.

There are no ring outliers.

## 6.7 Other polymers [i](#)

There are no such molecules in this entry.

## 6.8 Polymer linkage issues [i](#)

There are no chain breaks in this entry.

## 7 Chemical shift validation [i](#)

The completeness of assignment taking into account all chemical shift lists is 44% for the well-defined parts and 43% for the entire structure.

### 7.1 Chemical shift list 1

File name: working\_cs.cif

Chemical shift list name: *assigned\_chem\_shift\_list\_1*

#### 7.1.1 Bookkeeping [i](#)

The following table shows the results of parsing the chemical shift list and reports the number of nuclei with statistically unusual chemical shifts.

Total number of shifts	1067
Number of shifts mapped to atoms	1067
Number of unparsed shifts	0
Number of shifts with mapping errors	0
Number of shifts with mapping warnings	0
Number of shift outliers (ShiftChecker)	1

#### 7.1.2 Chemical shift referencing [i](#)

The following table shows the suggested chemical shift referencing corrections.

Nucleus	# values	Correction $\pm$ precision, ppm	Suggested action
$^{13}\text{C}_\alpha$	92	$-0.36 \pm 0.11$	None needed (< 0.5 ppm)
$^{13}\text{C}_\beta$	86	$0.18 \pm 0.16$	None needed (< 0.5 ppm)
$^{13}\text{C}'$	52	$-0.24 \pm 0.15$	None needed (< 0.5 ppm)
$^{15}\text{N}$	87	$0.27 \pm 0.29$	None needed (< 0.5 ppm)

#### 7.1.3 Completeness of resonance assignments [i](#)

The following table shows the completeness of the chemical shift assignments for the well-defined regions of the structure. The overall completeness is 44%, i.e. 1044 atoms were assigned a chemical shift out of a possible 2394. 0 out of 40 assigned methyl groups (LEU and VAL) were assigned stereospecifically.

	Total	$^1\text{H}$	$^{13}\text{C}$	$^{15}\text{N}$
Backbone	402/900 (45%)	178/366 (49%)	139/356 (39%)	85/178 (48%)
Sidechain	593/1302 (46%)	405/840 (48%)	181/430 (42%)	7/32 (22%)

*Continued on next page...*

Continued from previous page...

	Total	<sup>1</sup> H	<sup>13</sup> C	<sup>15</sup> N
Aromatic	49/192 (26%)	27/94 (29%)	21/88 (24%)	1/10 (10%)
Overall	1044/2394 (44%)	610/1300 (47%)	341/874 (39%)	93/220 (42%)

#### 7.1.4 Statistically unusual chemical shifts [i](#)

The following table lists the statistically unusual chemical shifts. These are statistical measures, and large deviations from the mean do not necessarily imply incorrect assignments. Molecules containing paramagnetic centres or hemes are expected to give rise to anomalous chemical shifts.

List Id	Chain	Res	Type	Atom	Shift, ppm	Expected range, ppm	Z-score
1	B	19	SER	HB3	2.11	2.49 – 5.20	-6.4

#### 7.1.5 Random Coil Index (RCI) plots [i](#)

The image below reports *random coil index* values for the protein chains in the structure. The height of each bar gives a probability of a given residue to be disordered, as predicted from the available chemical shifts and the amino acid sequence. A value above 0.2 is an indication of significant predicted disorder. The colour of the bar shows whether the residue is in the well-defined core (black) or in the ill-defined residue ranges (cyan), as described in section 2 on ensemble composition. If well-defined core and ill-defined regions are not identified then it is shown as gray bars.

Random coil index (RCI) for chain B:

