



## wwPDB EM Validation Summary Report ⓘ

Mar 13, 2026 – 08:38 AM UTC

PDB ID : 7JSF / pdb\_00007jsf  
EMDB ID : EMD-22452  
Title : Adeno-Associated Virus Helicase domain Heptamer with ssDNA  
Authors : Escalante, C.R.  
Deposited on : 2020-08-14  
Resolution : 6.70 Å (reported)  
Based on initial model : 1S9H

This is a wwPDB EM Validation Summary Report for a publicly released PDB entry.

We welcome your comments at [validation@mail.wwpdb.org](mailto:validation@mail.wwpdb.org)

A user guide is available at

<https://www.wwpdb.org/validation/2017/EMValidationReportHelp>

with specific help available everywhere you see the ⓘ symbol.

The types of validation reports are described at

<http://www.wwpdb.org/validation/2017/FAQs#types>.

---

The following versions of software and data (see [references ⓘ](#)) were used in the production of this report:

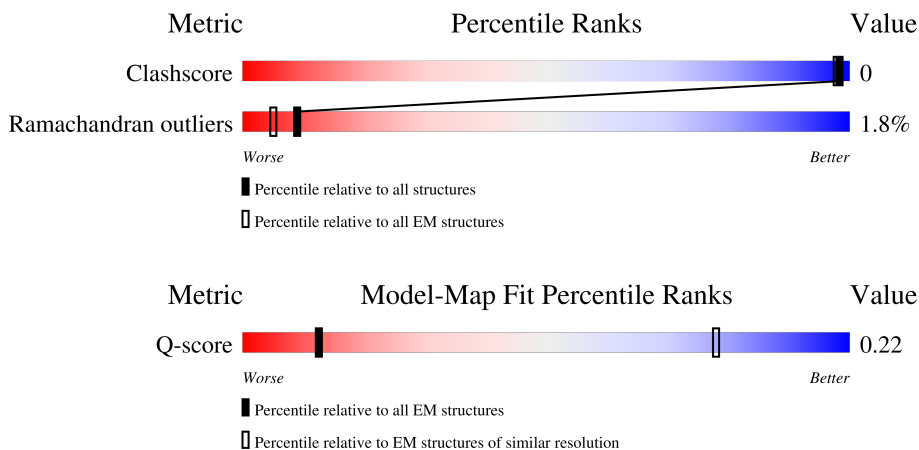
EMDB validation analysis : 0.0.1.dev132  
MolProbity : 4-5-2 with Phenix2.0  
Percentile statistics : 20250101.v01 (using entries in the PDB archive January 1st 2025)  
EM percentile statistics : 202505.v01 (Using data in the EMDB archive up until May 2025)  
MapQ : 1.9.13  
Ideal geometry (proteins) : Engh & Huber (2001)  
Ideal geometry (DNA, RNA) : Parkinson et al. (1996)  
Validation Pipeline (wwPDB-VP) : 2.49

# 1 Overall quality at a glance i

The following experimental techniques were used to determine the structure:  
*ELECTRON MICROSCOPY*

The reported resolution of this entry is 6.70 Å.

Percentile scores (ranging between 0-100) for global validation metrics of the entry are shown in the following graphic. The table shows the number of entries on which the scores are based.



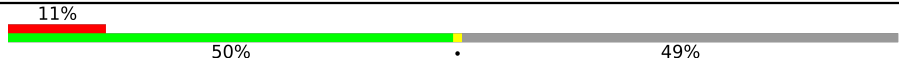

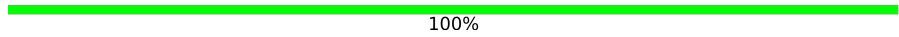
Metric	Whole archive (#Entries)	EM structures (#Entries)	Similar EM resolution (#Entries, resolution range(Å))
Clashscore	229148	23984	-
Ramachandran outliers	224038	23583	-
Q-score	-	25397	523 ( 6.20 - 7.20 )

The table below summarises the geometric issues observed across the polymeric chains and their fit to the map. The red, orange, yellow and green segments of the bar indicate the fraction of residues that contain outliers for  $\geq 3$ , 2, 1 and 0 types of geometric quality criteria respectively. A grey segment represents the fraction of residues that are not modelled. The numeric value for each fraction is indicated below the corresponding segment, with a dot representing fractions  $\leq 5\%$ . The upper red bar (where present) indicates the fraction of residues that have poor fit to the EM map (all-atom inclusion  $< 40\%$ ). The numeric value is given above the bar.

Mol	Chain	Length	Quality of chain
1	A	537	<span style="display: inline-block; width: 100%; height: 15px; background: linear-gradient(to right, red 13%, orange 13%, yellow 13%, green 13%, grey 49%);"></span> 13%                      50%                      .                      49%
1	B	537	<span style="display: inline-block; width: 100%; height: 15px; background: linear-gradient(to right, red 13%, orange 13%, yellow 13%, green 13%, grey 49%);"></span> 13%                      50%                      .                      49%
1	C	537	<span style="display: inline-block; width: 100%; height: 15px; background: linear-gradient(to right, red 10%, orange 10%, yellow 10%, green 10%, grey 49%);"></span> 10%                      50%                      .                      49%
1	D	537	<span style="display: inline-block; width: 100%; height: 15px; background: linear-gradient(to right, red 9%, orange 9%, yellow 9%, green 9%, grey 49%);"></span> 9%                      50%                      .                      49%
1	E	537	<span style="display: inline-block; width: 100%; height: 15px; background: linear-gradient(to right, red 10%, orange 10%, yellow 10%, green 10%, grey 49%);"></span> 10%                      50%                      .                      49%

*Continued on next page...*

*Continued from previous page...*

Mol	Chain	Length	Quality of chain
1	F	537	
1	G	537	
2	H	4	

## 2 Entry composition [i](#)

There are 2 unique types of molecules in this entry. The entry contains 7808 atoms, of which 0 are hydrogens and 0 are deuteriums.

In the tables below, the AltConf column contains the number of residues with at least one atom in alternate conformation and the Trace column contains the number of residues modelled with at most 2 atoms.

- Molecule 1 is a protein called Protein Rep68.

Mol	Chain	Residues	Atoms				AltConf	Trace
			Total	C	N	O		
1	A	276	1104	552	276	276	0	0
1	B	276	1104	552	276	276	0	0
1	C	276	1104	552	276	276	0	0
1	D	276	1104	552	276	276	0	0
1	E	276	1104	552	276	276	0	0
1	F	276	1104	552	276	276	0	0
1	G	276	1104	552	276	276	0	0

There are 28 discrepancies between the modelled and reference sequences:

Chain	Residue	Modelled	Actual	Comment	Reference
A	0	GLY	-	expression tag	UNP P03132
A	1	PRO	-	expression tag	UNP P03132
A	17	GLU	GLY	conflict	UNP P03132
A	151	SER	CYS	engineered mutation	UNP P03132
B	0	GLY	-	expression tag	UNP P03132
B	1	PRO	-	expression tag	UNP P03132
B	17	GLU	GLY	conflict	UNP P03132
B	151	SER	CYS	engineered mutation	UNP P03132
C	0	GLY	-	expression tag	UNP P03132
C	1	PRO	-	expression tag	UNP P03132
C	17	GLU	GLY	conflict	UNP P03132
C	151	SER	CYS	engineered mutation	UNP P03132
D	0	GLY	-	expression tag	UNP P03132
D	1	PRO	-	expression tag	UNP P03132
D	17	GLU	GLY	conflict	UNP P03132
D	151	SER	CYS	engineered mutation	UNP P03132

*Continued on next page...*

*Continued from previous page...*

Chain	Residue	Modelled	Actual	Comment	Reference
E	0	GLY	-	expression tag	UNP P03132
E	1	PRO	-	expression tag	UNP P03132
E	17	GLU	GLY	conflict	UNP P03132
E	151	SER	CYS	engineered mutation	UNP P03132
F	0	GLY	-	expression tag	UNP P03132
F	1	PRO	-	expression tag	UNP P03132
F	17	GLU	GLY	conflict	UNP P03132
F	151	SER	CYS	engineered mutation	UNP P03132
G	0	GLY	-	expression tag	UNP P03132
G	1	PRO	-	expression tag	UNP P03132
G	17	GLU	GLY	conflict	UNP P03132
G	151	SER	CYS	engineered mutation	UNP P03132

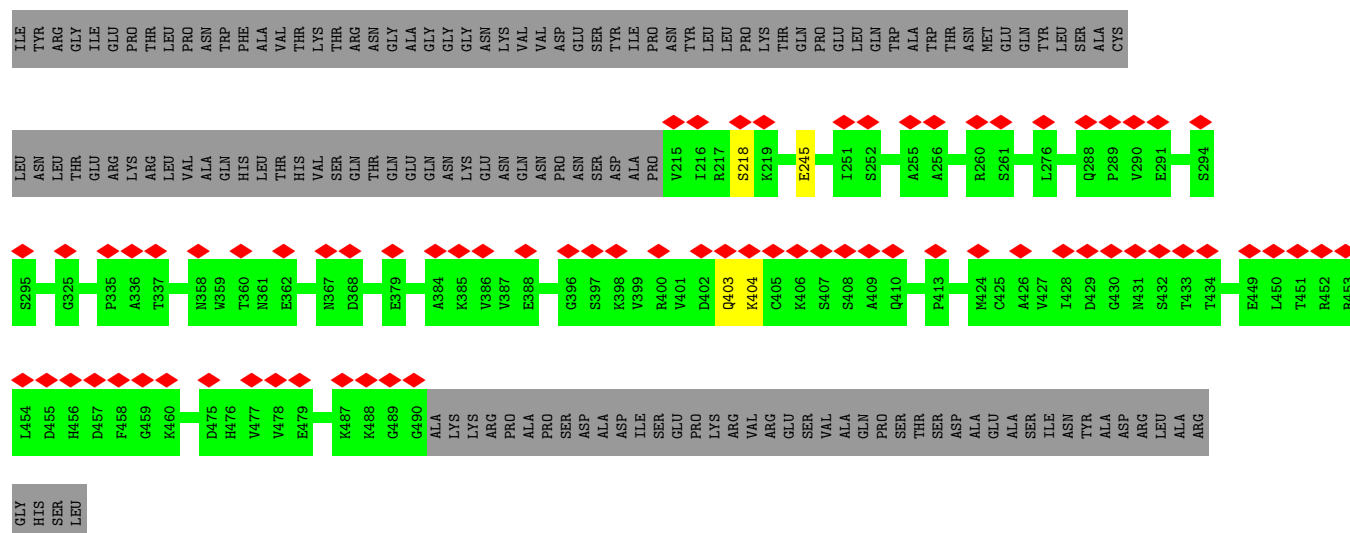
- Molecule 2 is a DNA chain called DNA (5'-D(P\*TP\*TP\*TP\*T)-3').

Mol	Chain	Residues	Atoms					AltConf	Trace
			Total	C	N	O	P		
2	H	4	80	40	8	28	4	0	0









- Molecule 2: DNA (5'-D(P\*TP\*TP\*TP\*T)-3')

Chain H:  100%

There are no outlier residues recorded for this chain.

## 4 Experimental information

Property	Value	Source
EM reconstruction method	SINGLE PARTICLE	Depositor
Imposed symmetry	POINT, Not provided	
Number of particles used	46031	Depositor
Resolution determination method	FSC 0.143 CUT-OFF	Depositor
CTF correction method	PHASE FLIPPING AND AMPLITUDE CORRECTION	Depositor
Microscope	FEI TITAN KRIOS	Depositor
Voltage (kV)	300	Depositor
Electron dose ( $e^-/\text{\AA}^2$ )	92.03	Depositor
Minimum defocus (nm)	Not provided	
Maximum defocus (nm)	Not provided	
Magnification	165000	Depositor
Image detector	GATAN K2 SUMMIT (4k x 4k)	Depositor
Maximum map value	0.719	Depositor
Minimum map value	-0.104	Depositor
Average map value	0.009	Depositor
Map value standard deviation	0.031	Depositor
Recommended contour level	0.29	Depositor
Map size (Å)	330.0, 330.0, 330.0	wwPDB
Map dimensions	400, 400, 400	wwPDB
Map angles (°)	90.0, 90.0, 90.0	wwPDB
Pixel spacing (Å)	0.825, 0.825, 0.825	Depositor

## 5 Model quality [i](#)

### 5.1 Standard geometry [i](#)

The Z score for a bond length (or angle) is the number of standard deviations the observed value is removed from the expected value. A bond length (or angle) with  $|Z| > 5$  is considered an outlier worth inspection. RMSZ is the root-mean-square of all Z scores of the bond lengths (or angles).

Mol	Chain	Bond lengths		Bond angles	
		RMSZ	# Z  >5	RMSZ	# Z  >5
1	A	0.10	0/1103	0.27	0/1377
1	B	0.10	0/1103	0.27	0/1377
1	C	0.10	0/1103	0.27	0/1377
1	D	0.10	0/1103	0.28	0/1377
1	E	0.11	0/1103	0.28	0/1377
1	F	0.11	0/1103	0.28	0/1377
1	G	0.14	0/1103	0.38	0/1377
2	H	0.14	0/87	0.43	0/132
All	All	0.11	0/7808	0.29	0/9771

There are no bond length outliers.

There are no bond angle outliers.

There are no chirality outliers.

There are no planarity outliers.

### 5.2 Too-close contacts [i](#)

In the following table, the Non-H and H(model) columns list the number of non-hydrogen atoms and hydrogen atoms in the chain respectively. The H(added) column lists the number of hydrogen atoms added and optimized by MolProbity. The Clashes column lists the number of clashes within the asymmetric unit, whereas Symm-Clashes lists symmetry-related clashes.

Mol	Chain	Non-H	H(model)	H(added)	Clashes	Symm-Clashes
1	A	1104	0	300	0	0
1	B	1104	0	300	0	0
1	C	1104	0	300	0	0
1	D	1104	0	300	2	0
1	E	1104	0	300	1	0
1	F	1104	0	300	0	0
1	G	1104	0	300	0	0
2	H	80	0	49	0	0

*Continued on next page...*

Continued from previous page...

Mol	Chain	Non-H	H(model)	H(added)	Clashes	Symm-Clashes
All	All	7808	0	2149	3	0

The all-atom clashscore is defined as the number of clashes found per 1000 atoms (including hydrogen atoms). The all-atom clashscore for this structure is 0.

All (3) close contacts within the same asymmetric unit are listed below, sorted by their clash magnitude.

Atom-1	Atom-2	Interatomic distance (Å)	Clash overlap (Å)
1:D:386:VAL:O	1:D:389:SER:N	2.48	0.47
1:D:429:ASP:N	1:D:432:SER:O	2.46	0.41
1:E:429:ASP:N	1:E:432:SER:O	2.46	0.40

There are no symmetry-related clashes.

## 5.3 Torsion angles [i](#)

### 5.3.1 Protein backbone [i](#)

In the following table, the Percentiles column shows the percent Ramachandran outliers of the chain as a percentile score with respect to all PDB entries followed by that with respect to all EM entries.

The Analysed column shows the number of residues for which the backbone conformation was analysed, and the total number of residues.

Mol	Chain	Analysed	Favoured	Allowed	Outliers	Percentiles	
1	A	274/537 (51%)	241 (88%)	27 (10%)	6 (2%)	5	29
1	B	274/537 (51%)	241 (88%)	28 (10%)	5 (2%)	6	34
1	C	274/537 (51%)	242 (88%)	27 (10%)	5 (2%)	6	34
1	D	274/537 (51%)	236 (86%)	33 (12%)	5 (2%)	6	34
1	E	274/537 (51%)	242 (88%)	27 (10%)	5 (2%)	6	34
1	F	274/537 (51%)	241 (88%)	28 (10%)	5 (2%)	6	34
1	G	274/537 (51%)	242 (88%)	28 (10%)	4 (2%)	8	40
All	All	1918/3759 (51%)	1685 (88%)	198 (10%)	35 (2%)	9	34

5 of 35 Ramachandran outliers are listed below:

Mol	Chain	Res	Type
1	A	218	SER
1	B	218	SER
1	D	218	SER
1	F	218	SER
1	A	245	GLU

### 5.3.2 Protein sidechains [i](#)

There are no protein residues with a non-rotameric sidechain to report in this entry.

### 5.3.3 RNA [i](#)

There are no RNA molecules in this entry.

### 5.4 Non-standard residues in protein, DNA, RNA chains [i](#)

There are no non-standard protein/DNA/RNA residues in this entry.

### 5.5 Carbohydrates [i](#)

There are no oligosaccharides in this entry.

### 5.6 Ligand geometry [i](#)

There are no ligands in this entry.

### 5.7 Other polymers [i](#)

There are no such residues in this entry.

### 5.8 Polymer linkage issues [i](#)

There are no chain breaks in this entry.

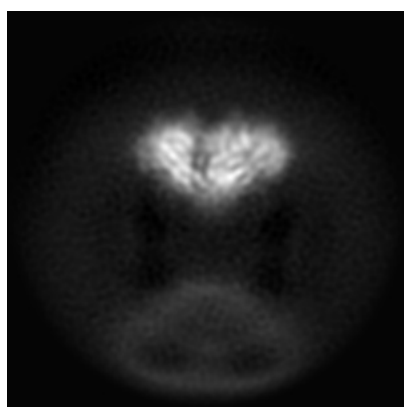
## 6 Map visualisation [i](#)

This section contains visualisations of the EMDB entry EMD-22452. These allow visual inspection of the internal detail of the map and identification of artifacts.

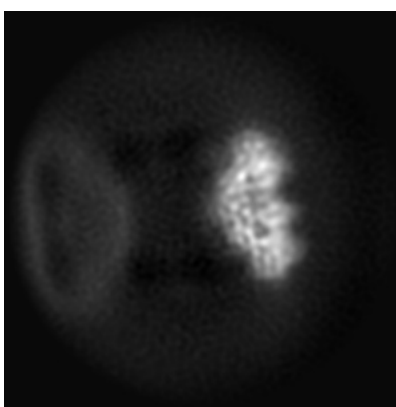
No raw map or half-maps were deposited for this entry and therefore no images, graphs, etc. pertaining to the raw map can be shown.

### 6.1 Orthogonal projections [i](#)

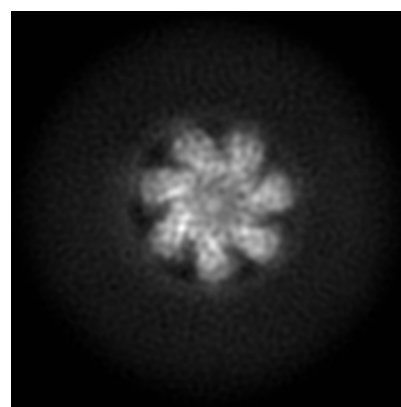
#### 6.1.1 Primary map



X



Y

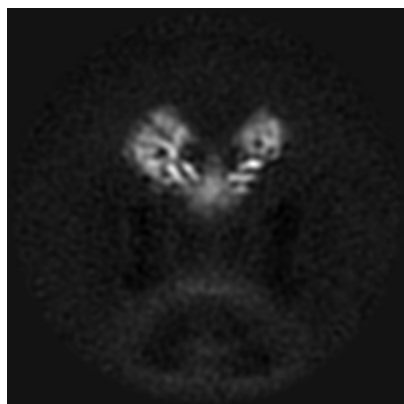


Z

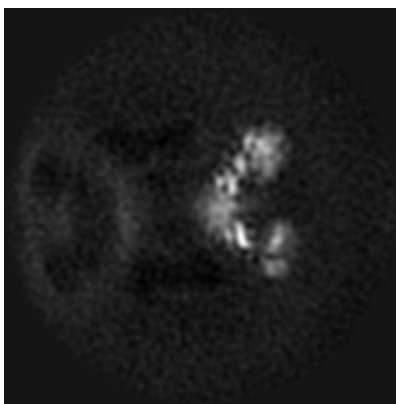
The images above show the map projected in three orthogonal directions.

### 6.2 Central slices [i](#)

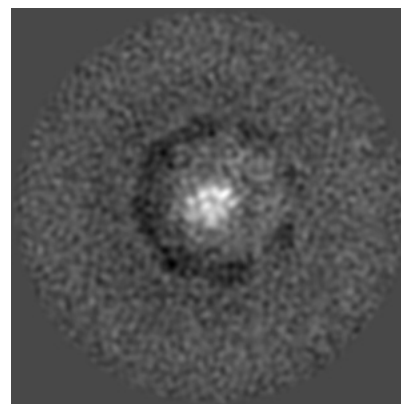
#### 6.2.1 Primary map



X Index: 200



Y Index: 200

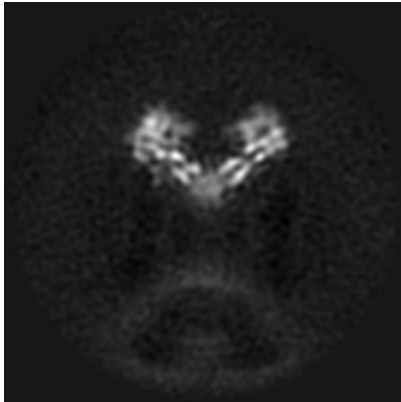


Z Index: 200

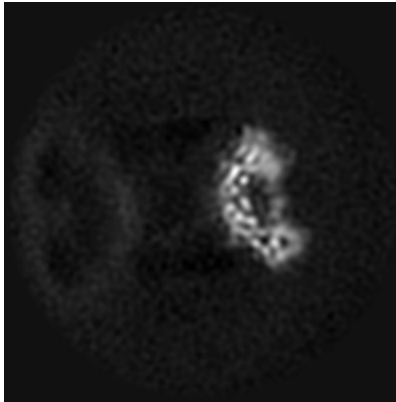
The images above show central slices of the map in three orthogonal directions.

## 6.3 Largest variance slices [i](#)

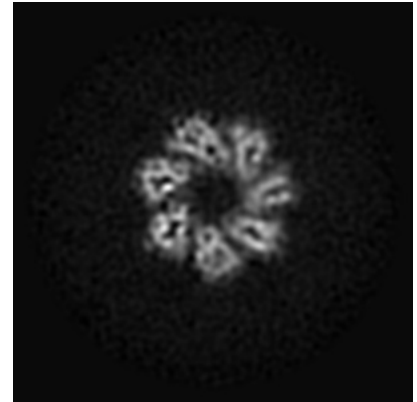
### 6.3.1 Primary map



X Index: 192



Y Index: 179

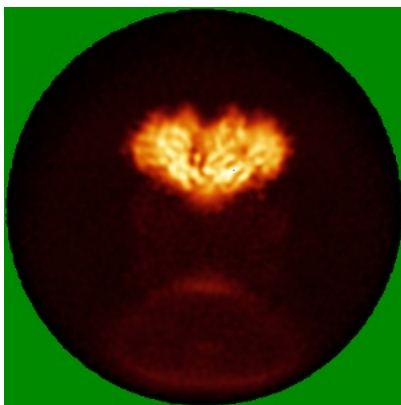


Z Index: 263

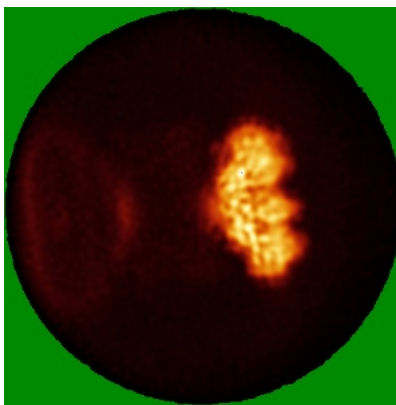
The images above show the largest variance slices of the map in three orthogonal directions.

## 6.4 Orthogonal standard-deviation projections (False-color) [i](#)

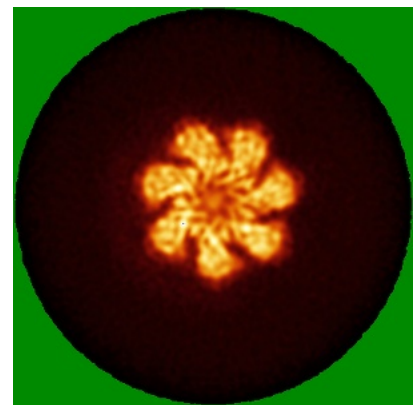
### 6.4.1 Primary map



X



Y



Z

The images above show the map standard deviation projections with false color in three orthogonal directions. Minimum values are shown in green, max in blue, and dark to light orange shades represent small to large values respectively.

## 6.5 Orthogonal surface views

This section was not generated.

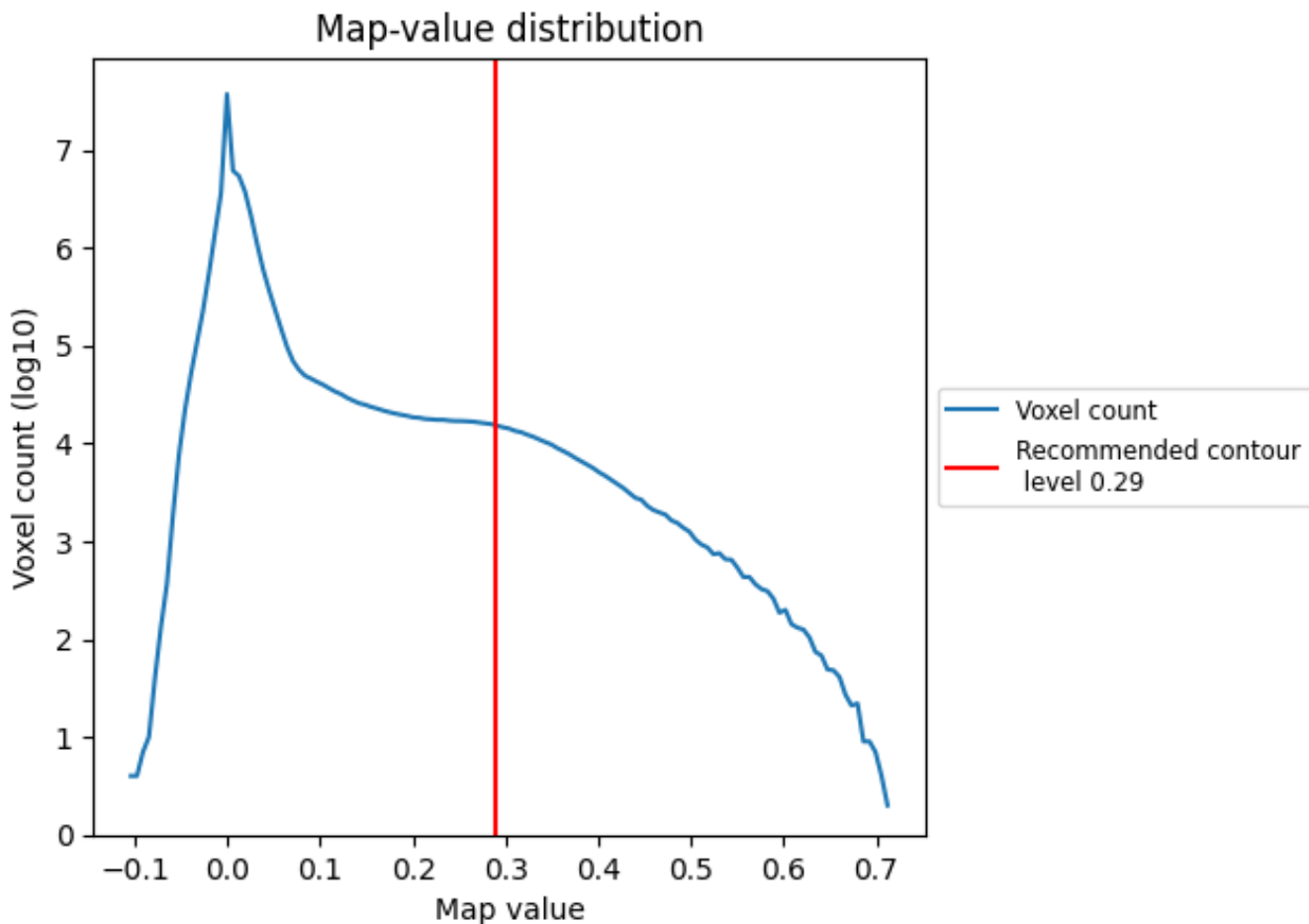
## 6.6 Mask visualisation

This section was not generated. No masks/segmentation were deposited.

## 7 Map analysis [i](#)

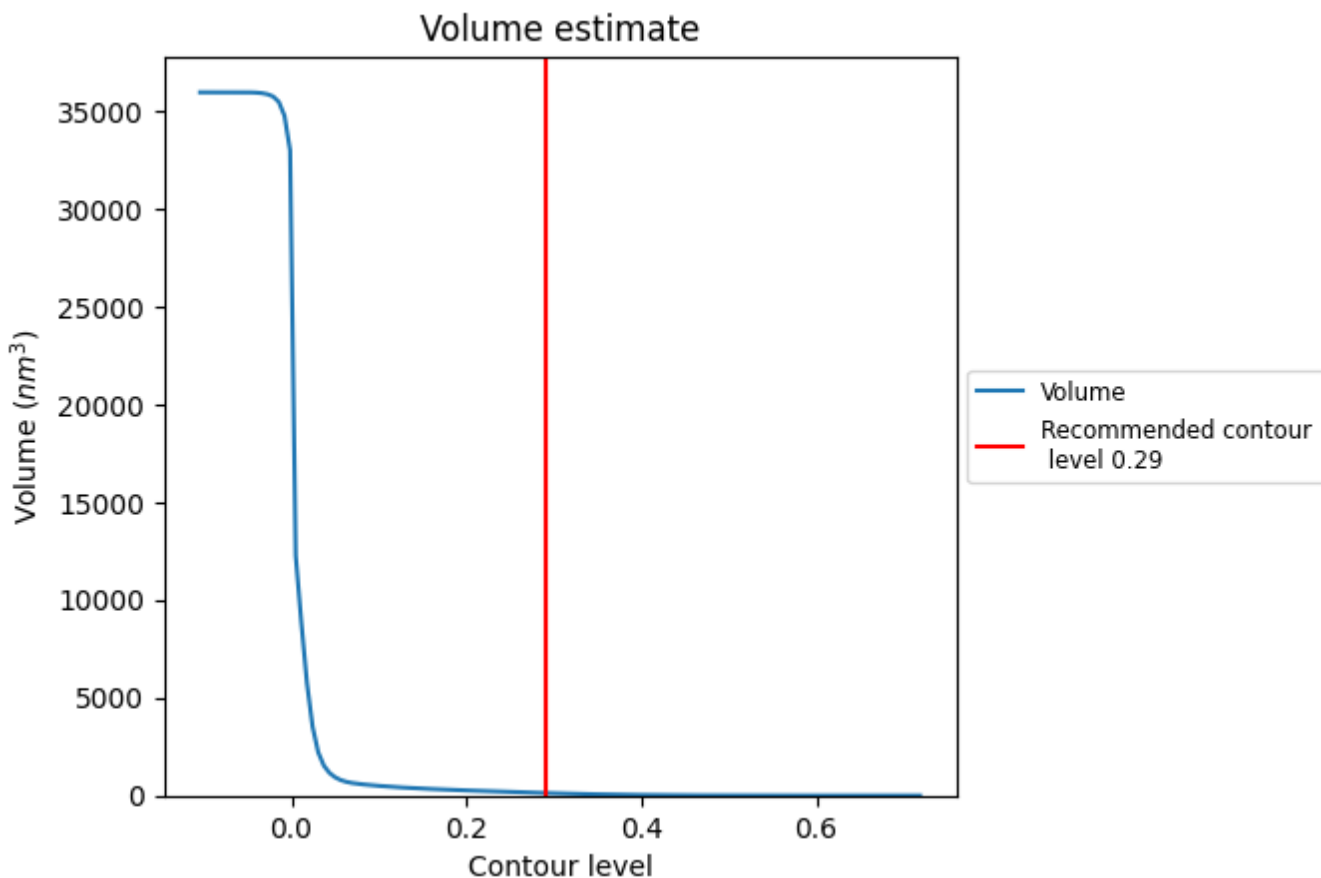
This section contains the results of statistical analysis of the map.

### 7.1 Map-value distribution [i](#)



The map-value distribution is plotted in 128 intervals along the x-axis. The y-axis is logarithmic. A spike in this graph at zero usually indicates that the volume has been masked.

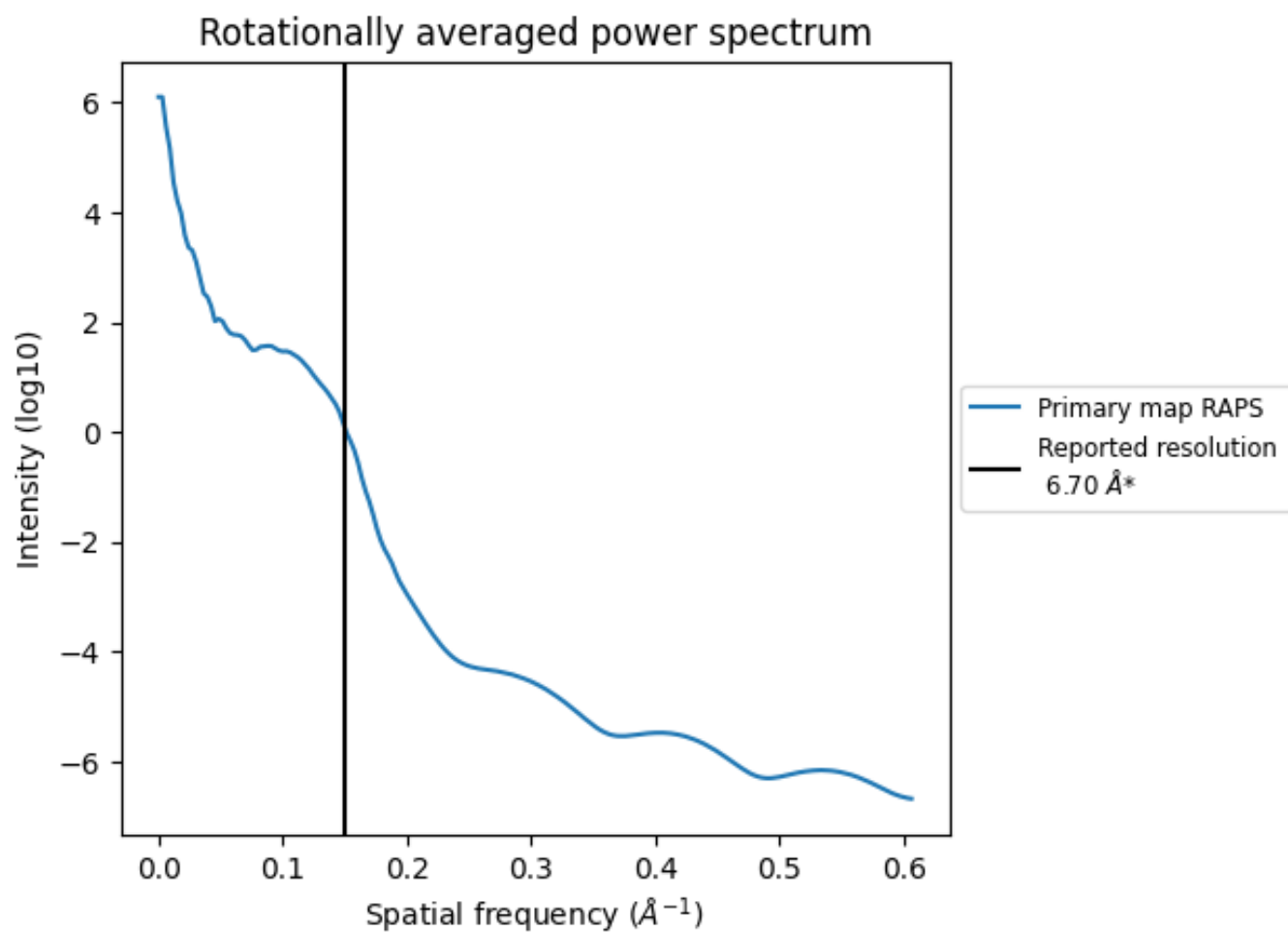
## 7.2 Volume estimate [i](#)



The volume at the recommended contour level is 130 nm<sup>3</sup>; this corresponds to an approximate mass of 117 kDa.

The volume estimate graph shows how the enclosed volume varies with the contour level. The recommended contour level is shown as a vertical line and the intersection between the line and the curve gives the volume of the enclosed surface at the given level.

### 7.3 Rotationally averaged power spectrum [i](#)



\*Reported resolution corresponds to spatial frequency of 0.149 Å<sup>-1</sup>

## 8 Fourier-Shell correlation

This section was not generated. No FSC curve or half-maps provided.

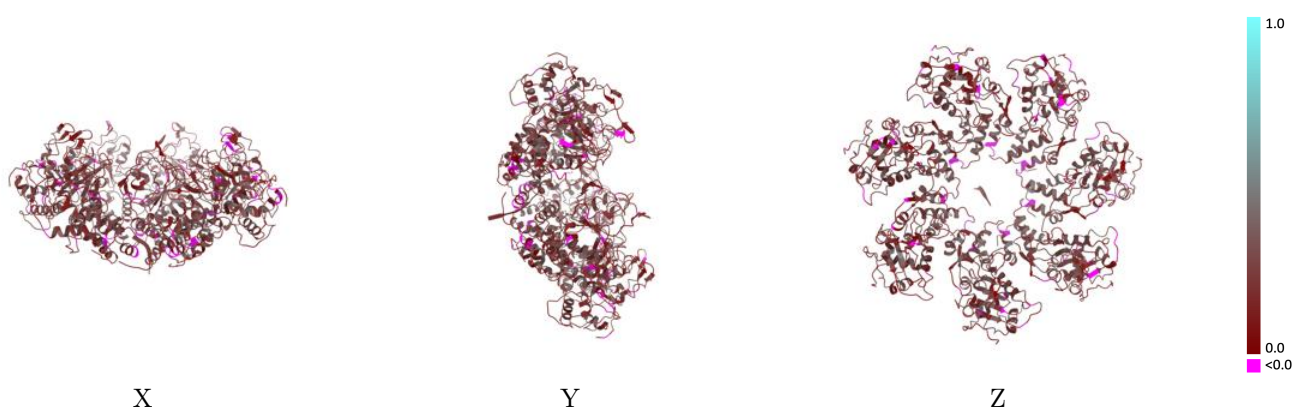
## 9 Map-model fit [i](#)

This section contains information regarding the fit between EMDB map EMD-22452 and PDB model 7JSF. Per-residue inclusion information can be found in section 3 on page 6.

### 9.1 Map-model overlay [i](#)

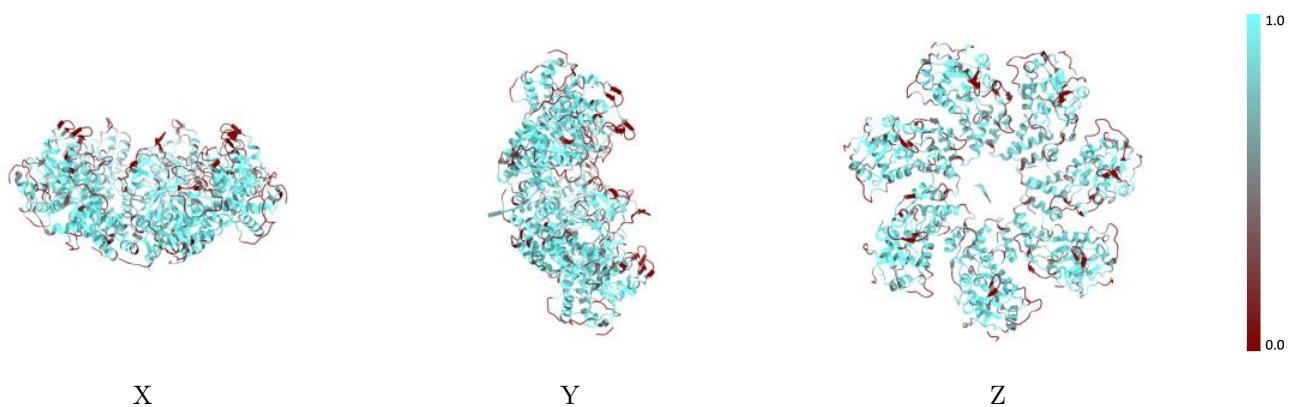
This section was not generated.

### 9.2 Q-score mapped to coordinate model [i](#)



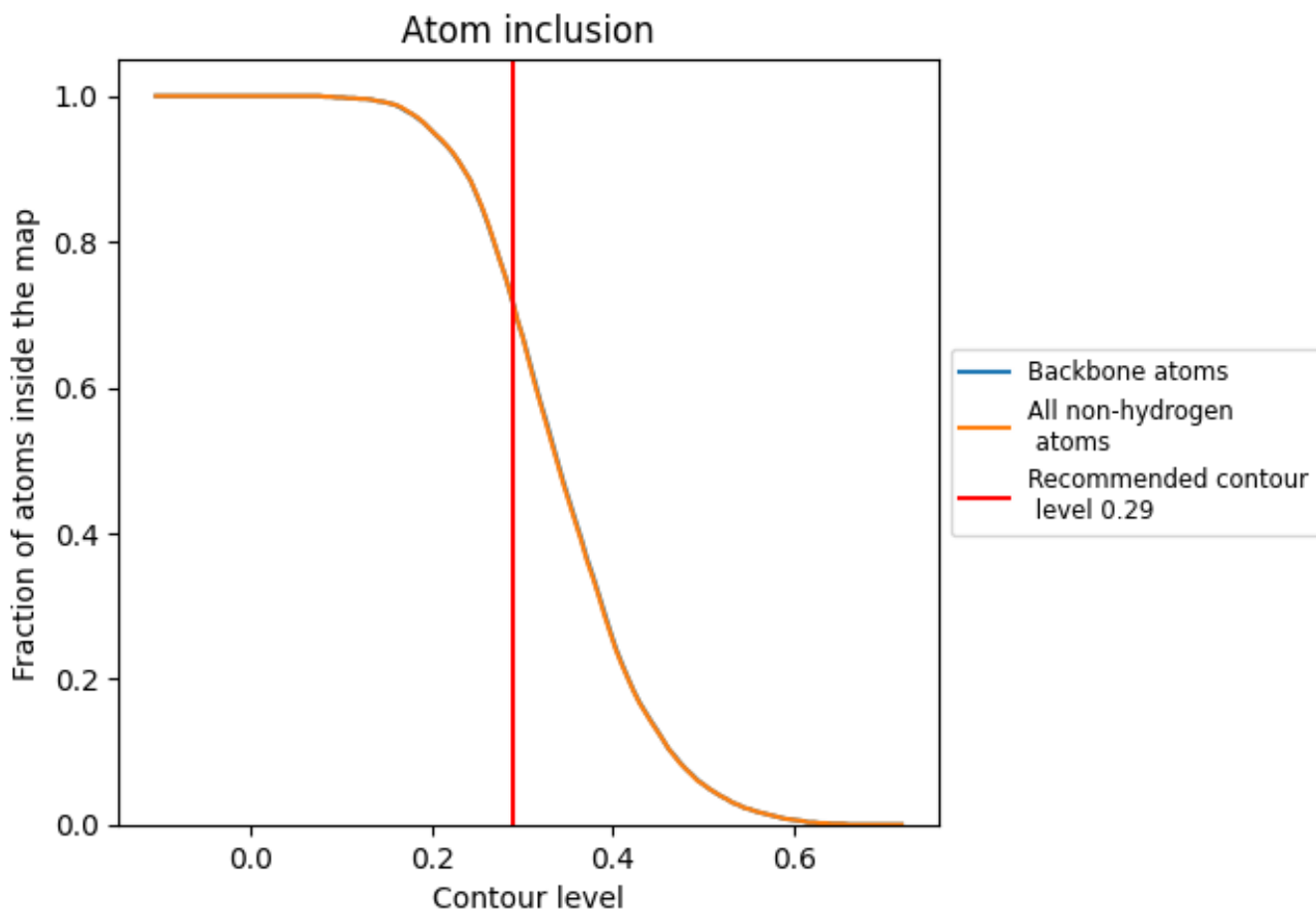
The images above show the model with each residue coloured according to its Q-score. This shows their resolvability in the map with higher Q-score values reflecting better resolvability. Please note: Q-score is calculating the resolvability of atoms, and thus high values are only expected at resolutions at which atoms can be resolved. Low Q-score values may therefore be expected for many entries.

### 9.3 Atom inclusion mapped to coordinate model [i](#)



The images above show the model with each residue coloured according to its atom inclusion. This shows to what extent they are inside the map at the recommended contour level (0.29).



















## 9.4 Atom inclusion [i](#)



At the recommended contour level, 72% of all backbone atoms, 72% of all non-hydrogen atoms, are inside the map.

## 9.5 Map-model fit summary

The table lists the average atom inclusion at the recommended contour level (0.29) and Q-score for the entire model and for each chain.

Chain	Atom inclusion	Q-score
All	 0.7150	 0.2200
A	 0.6890	 0.2150
B	 0.6880	 0.2120
C	 0.7220	 0.2150
D	 0.7660	 0.2280
E	 0.7350	 0.2340
F	 0.7200	 0.2160
G	 0.6830	 0.2170
H	 0.7130	 0.2120

