



Full wwPDB X-ray Structure Validation Report ⓘ

Mar 5, 2026 – 01:28 PM UTC

PDB ID : 6HYA / pdb_00006hya
Title : THE GLIC PENTAMERIC LIGAND-GATED ION CHANNEL MUTANT Q193L
Authors : Hu, H.D.; Delarue, M.
Deposited on : 2018-10-19
Resolution : 3.39 Å(reported)

This is a Full wwPDB X-ray Structure Validation Report for a publicly released PDB entry.

We welcome your comments at validation@mail.wwpdb.org

A user guide is available at

<https://www.wwpdb.org/validation/2017/XrayValidationReportHelp>

with specific help available everywhere you see the ⓘ symbol.

The types of validation reports are described at

<http://www.wwpdb.org/validation/2017/FAQs#types>.

The following versions of software and data (see [references ⓘ](#)) were used in the production of this report:

MolProbity : 4-5-2 with Phenix2.0
Mogul : 2022.3.0, CSD as543be (2022)
Xtrriage (Phenix) : 2.0
EDS : 3.0
Buster-report : wwPDB partial adaption of 1.1.7 (2018)
Percentile statistics : 20250101.v01 (using entries in the PDB archive January 1st 2025)
CCP4 : 9.0.010 (Gargrove)
Density-Fitness : 1.0.12
Ideal geometry (proteins) : Engh & Huber (2001)
Ideal geometry (DNA, RNA) : Parkinson et al. (1996)
Validation Pipeline (wwPDB-VP) : 2.49

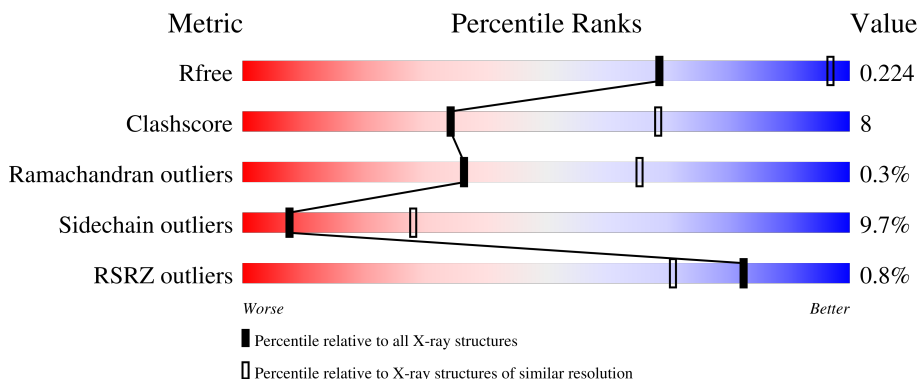
1 Overall quality at a glance i

The following experimental techniques were used to determine the structure:

X-RAY DIFFRACTION

The reported resolution of this entry is 3.39 Å.

Percentile scores (ranging between 0-100) for global validation metrics of the entry are shown in the following graphic. The table shows the number of entries on which the scores are based.



Metric	Whole archive (#Entries)	Similar resolution (#Entries, resolution range(Å))
R_{free}	180053	1001 (3.44-3.36)
Clashscore	190562	1022 (3.44-3.36)
Ramachandran outliers	187476	1012 (3.44-3.36)
Sidechain outliers	187428	1012 (3.44-3.36)
RSRZ outliers	180081	1001 (3.44-3.36)

The table below summarises the geometric issues observed across the polymeric chains and their fit to the electron density. The red, orange, yellow and green segments of the lower bar indicate the fraction of residues that contain outliers for ≥ 3 , 2, 1 and 0 types of geometric quality criteria respectively. A grey segment represents the fraction of residues that are not modelled. The numeric value for each fraction is indicated below the corresponding segment, with a dot representing fractions $\leq 5\%$. The upper red bar (where present) indicates the fraction of residues that have poor fit to the electron density. The numeric value is given above the bar.

Mol	Chain	Length	Quality of chain
1	A	317	<div style="display: flex; align-items: center;"> <div style="width: 10px; height: 10px; background-color: red; margin-right: 5px;"></div> <div style="width: 100%; height: 20px; background: linear-gradient(to right, red 5%, orange 15%, yellow 25%, green 71%, grey 100%);"></div> <div style="margin-left: 5px;">%</div> </div> <div style="display: flex; justify-content: space-between; width: 100%; margin-top: 5px;"> 71% 25% ... </div>
1	B	317	<div style="display: flex; align-items: center;"> <div style="width: 100%; height: 20px; background: linear-gradient(to right, green 68%, yellow 27%, orange 5%, red 5%, grey 100%);"></div> </div> <div style="display: flex; justify-content: space-between; width: 100%; margin-top: 5px;"> 68% 27% ... </div>
1	C	317	<div style="display: flex; align-items: center;"> <div style="width: 10px; height: 10px; background-color: red; margin-right: 5px;"></div> <div style="width: 100%; height: 20px; background: linear-gradient(to right, red 5%, orange 15%, yellow 26%, green 68%, grey 100%);"></div> <div style="margin-left: 5px;">%</div> </div> <div style="display: flex; justify-content: space-between; width: 100%; margin-top: 5px;"> 68% 26% ... </div>
1	D	317	<div style="display: flex; align-items: center;"> <div style="width: 10px; height: 10px; background-color: red; margin-right: 5px;"></div> <div style="width: 100%; height: 20px; background: linear-gradient(to right, red 5%, orange 15%, yellow 26%, green 70%, grey 100%);"></div> <div style="margin-left: 5px;">%</div> </div> <div style="display: flex; justify-content: space-between; width: 100%; margin-top: 5px;"> 70% 26% ... </div>
1	E	317	<div style="display: flex; align-items: center;"> <div style="width: 10px; height: 10px; background-color: red; margin-right: 5px;"></div> <div style="width: 100%; height: 20px; background: linear-gradient(to right, red 5%, orange 15%, yellow 28%, green 68%, grey 100%);"></div> <div style="margin-left: 5px;">%</div> </div> <div style="display: flex; justify-content: space-between; width: 100%; margin-top: 5px;"> 68% 28% ... </div>

2 Entry composition

There are 4 unique types of molecules in this entry. The entry contains 12638 atoms, of which 0 are hydrogens and 0 are deuteriums.

In the tables below, the ZeroOcc column contains the number of atoms modelled with zero occupancy, the AltConf column contains the number of residues with at least one atom in alternate conformation and the Trace column contains the number of residues modelled with at most 2 atoms.

- Molecule 1 is a protein called Proton-gated ion channel.

Mol	Chain	Residues	Atoms					ZeroOcc	AltConf	Trace
			Total	C	N	O	S			
1	A	311	2524	1665	403	452	4	0	0	0
1	B	311	2524	1665	403	452	4	0	0	0
1	C	311	2524	1665	403	452	4	0	0	0
1	D	311	2524	1665	403	452	4	0	0	0
1	E	311	2524	1665	403	452	4	0	0	0

There are 10 discrepancies between the modelled and reference sequences:

Chain	Residue	Modelled	Actual	Comment	Reference
A	1	ALA	GLY	engineered mutation	UNP Q7NDN8
A	193	LEU	GLN	engineered mutation	UNP Q7NDN8
B	1	ALA	GLY	engineered mutation	UNP Q7NDN8
B	193	LEU	GLN	engineered mutation	UNP Q7NDN8
C	1	ALA	GLY	engineered mutation	UNP Q7NDN8
C	193	LEU	GLN	engineered mutation	UNP Q7NDN8
D	1	ALA	GLY	engineered mutation	UNP Q7NDN8
D	193	LEU	GLN	engineered mutation	UNP Q7NDN8
E	1	ALA	GLY	engineered mutation	UNP Q7NDN8
E	193	LEU	GLN	engineered mutation	UNP Q7NDN8

- Molecule 2 is CHLORIDE ION (CCD ID: CL) (formula: Cl).

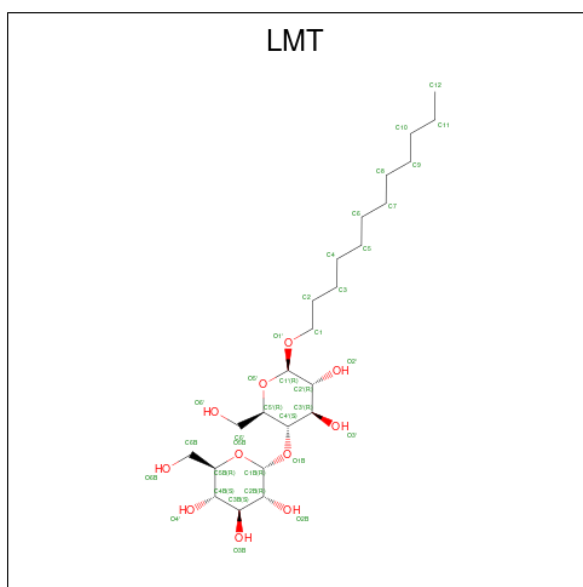
Mol	Chain	Residues	Atoms		ZeroOcc	AltConf
2	A	1	Total	Cl	0	0
			1	1		
2	B	1	Total	Cl	0	0
			1	1		

Continued on next page...

Continued from previous page...

Mol	Chain	Residues	Atoms	ZeroOcc	AltConf
2	C	1	Total Cl 1 1	0	0
2	D	1	Total Cl 1 1	0	0
2	E	1	Total Cl 1 1	0	0

- Molecule 3 is DODECYL-BETA-D-MALTOSE (CCD ID: LMT) (formula: $C_{24}H_{46}O_{11}$).



Mol	Chain	Residues	Atoms	ZeroOcc	AltConf
3	A	1	Total C 12 12	0	0

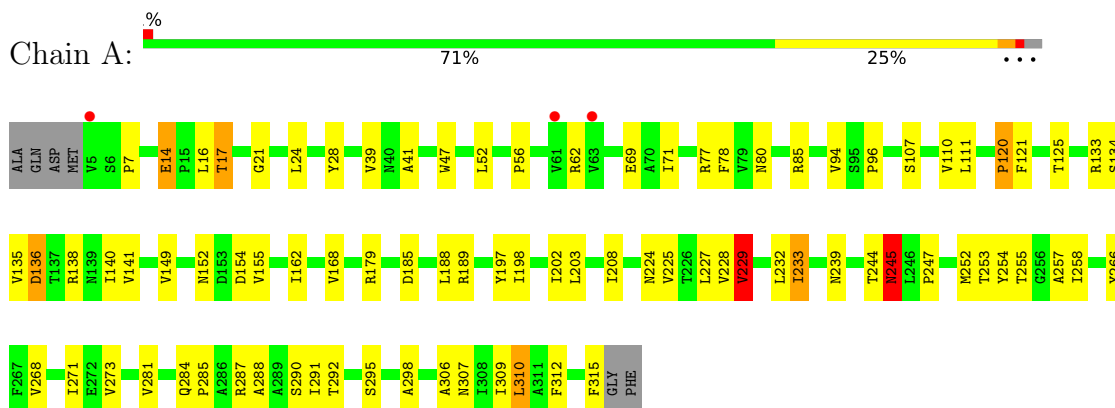
- Molecule 4 is water.

Mol	Chain	Residues	Atoms	ZeroOcc	AltConf
4	C	1	Total O 1 1	0	0

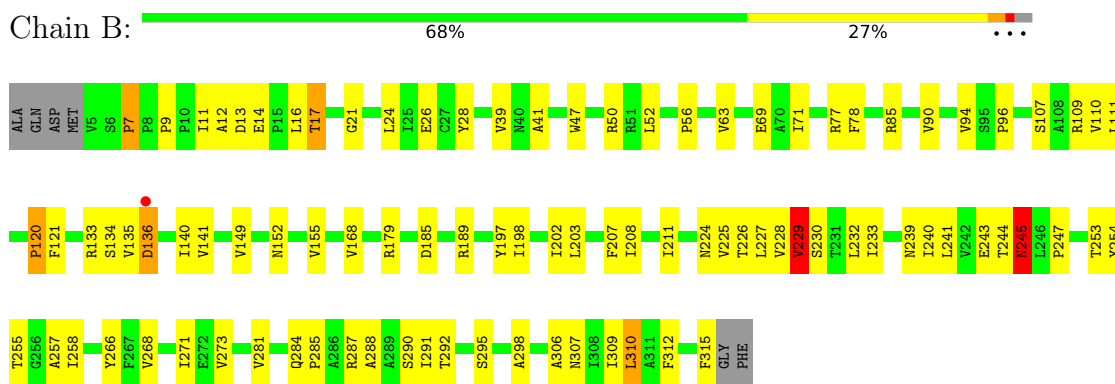
3 Residue-property plots [i](#)

These plots are drawn for all protein, RNA, DNA and oligosaccharide chains in the entry. The first graphic for a chain summarises the proportions of the various outlier classes displayed in the second graphic. The second graphic shows the sequence view annotated by issues in geometry and electron density. Residues are color-coded according to the number of geometric quality criteria for which they contain at least one outlier: green = 0, yellow = 1, orange = 2 and red = 3 or more. A red dot above a residue indicates a poor fit to the electron density ($RSRZ > 2$). Stretches of 2 or more consecutive residues without any outlier are shown as a green connector. Residues present in the sample, but not in the model, are shown in grey.

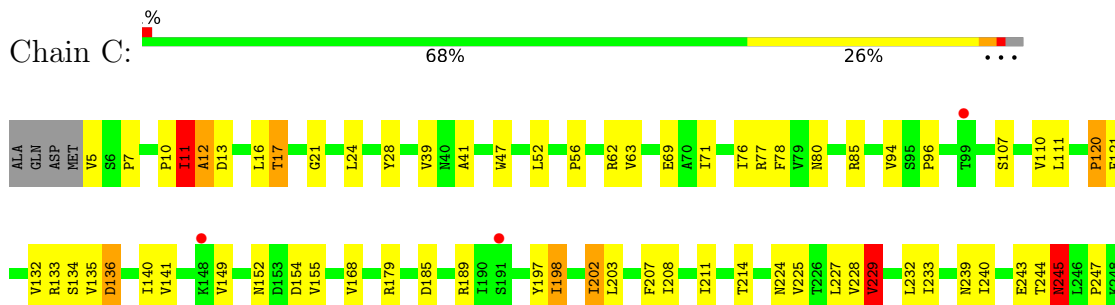
- Molecule 1: Proton-gated ion channel



- Molecule 1: Proton-gated ion channel

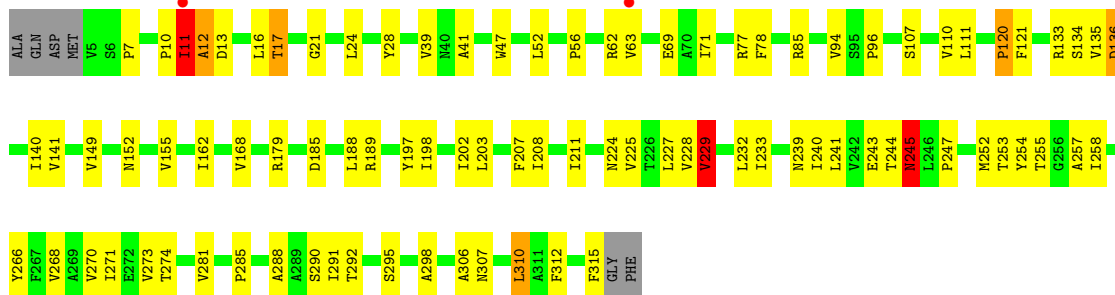


- Molecule 1: Proton-gated ion channel

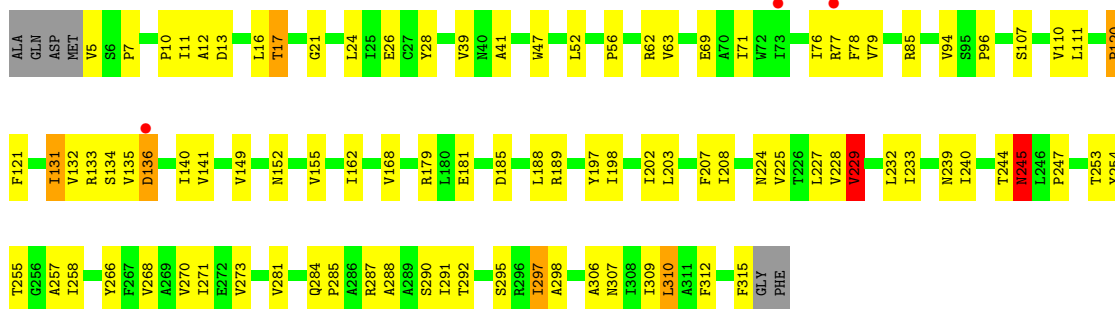




- Molecule 1: Proton-gated ion channel



- Molecule 1: Proton-gated ion channel



4 Data and refinement statistics

Property	Value	Source
Space group	C 1 2 1	Depositor
Cell constants a, b, c, α , β , γ	181.24Å 133.32Å 157.72Å 90.00° 100.96° 90.00°	Depositor
Resolution (Å)	20.00 – 3.39 20.00 – 3.39	Depositor EDS
% Data completeness (in resolution range)	50.0 (20.00-3.39) 49.7 (20.00-3.39)	Depositor EDS
R_{merge}	0.07	Depositor
R_{sym}	(Not available)	Depositor
$\langle I/\sigma(I) \rangle$ ¹	2.22 (at 3.36Å)	Xtrriage
Refinement program	BUSTER 2.10.2	Depositor
R, R_{free}	0.184 , 0.212 0.201 , 0.224	Depositor DCC
R_{free} test set	1268 reflections (4.98%)	wwPDB-VP
Wilson B-factor (Å ²)	78.4	Xtrriage
Anisotropy	0.045	Xtrriage
Bulk solvent k_{sol} (e/Å ³), B_{sol} (Å ²)	0.31 , 120.7	EDS
L-test for twinning ²	$\langle L \rangle = 0.49$, $\langle L^2 \rangle = 0.31$	Xtrriage
Estimated twinning fraction	No twinning to report.	Xtrriage
F_o, F_c correlation	0.93	EDS
Total number of atoms	12638	wwPDB-VP
Average B, all atoms (Å ²)	110.0	wwPDB-VP

Xtrriage's analysis on translational NCS is as follows: *The largest off-origin peak in the Patterson function is 6.06% of the height of the origin peak. No significant pseudotranslation is detected.*

¹Intensities estimated from amplitudes.

²Theoretical values of $\langle |L| \rangle$, $\langle L^2 \rangle$ for acentric reflections are 0.5, 0.333 respectively for untwinned datasets, and 0.375, 0.2 for perfectly twinned datasets.

5 Model quality [i](#)

5.1 Standard geometry [i](#)

Bond lengths and bond angles in the following residue types are not validated in this section: CL, LMT

The Z score for a bond length (or angle) is the number of standard deviations the observed value is removed from the expected value. A bond length (or angle) with $|Z| > 5$ is considered an outlier worth inspection. RMSZ is the root-mean-square of all Z scores of the bond lengths (or angles).

Mol	Chain	Bond lengths		Bond angles	
		RMSZ	# Z >5	RMSZ	# Z >5
1	A	0.85	0/2592	1.36	14/3544 (0.4%)
1	B	0.86	0/2592	1.35	15/3544 (0.4%)
1	C	0.97	4/2592 (0.2%)	1.35	14/3544 (0.4%)
1	D	1.03	2/2592 (0.1%)	1.34	12/3544 (0.3%)
1	E	0.88	1/2592 (0.0%)	1.34	13/3544 (0.4%)
All	All	0.92	7/12960 (0.1%)	1.35	68/17720 (0.4%)

All (7) bond length outliers are listed below:

Mol	Chain	Res	Type	Atoms	Z	Observed(Å)	Ideal(Å)
1	D	11	ILE	C-N	-21.73	1.13	1.33
1	D	12	ALA	C-N	19.91	1.61	1.33
1	C	12	ALA	C-N	16.51	1.56	1.33
1	C	11	ILE	C-N	-13.86	1.14	1.33
1	E	297	ILE	CG1-CD1	6.16	1.75	1.51
1	C	202	ILE	CG1-CD1	-5.75	1.29	1.51
1	C	249	THR	C-N	5.40	1.38	1.33

All (68) bond angle outliers are listed below:

Mol	Chain	Res	Type	Atoms	Z	Observed(°)	Ideal(°)
1	A	245	ASN	CA-CB-CG	7.93	120.53	112.60
1	D	245	ASN	CA-CB-CG	7.72	120.32	112.60
1	B	245	ASN	CA-CB-CG	7.64	120.25	112.60
1	E	245	ASN	CA-CB-CG	7.63	120.23	112.60
1	C	245	ASN	CA-CB-CG	7.41	120.01	112.60
1	B	9	PRO	O-C-N	6.19	124.16	121.31
1	E	69	GLU	CA-C-N	6.12	128.76	120.38
1	E	69	GLU	C-N-CA	6.12	128.76	120.38
1	B	69	GLU	CA-C-N	6.12	128.76	120.38

Continued on next page...

Continued from previous page...

Mol	Chain	Res	Type	Atoms	Z	Observed(°)	Ideal(°)
1	B	69	GLU	C-N-CA	6.12	128.76	120.38
1	A	69	GLU	CA-C-N	6.06	128.68	120.38
1	A	69	GLU	C-N-CA	6.06	128.68	120.38
1	C	69	GLU	CA-C-N	6.05	128.67	120.38
1	C	69	GLU	C-N-CA	6.05	128.67	120.38
1	A	229	VAL	N-CA-CB	6.00	117.56	110.55
1	E	266	TYR	N-CA-C	-5.93	104.40	111.69
1	D	69	GLU	CA-C-N	5.88	128.43	120.38
1	D	69	GLU	C-N-CA	5.88	128.43	120.38
1	C	41	ALA	N-CA-C	5.87	117.14	108.86
1	D	207	PHE	CA-CB-CG	5.80	119.60	113.80
1	D	11	ILE	O-C-N	5.80	129.49	121.84
1	B	266	TYR	N-CA-C	-5.79	104.57	111.69
1	C	266	TYR	N-CA-C	-5.78	104.58	111.69
1	B	202	ILE	N-CA-C	5.78	115.85	110.42
1	A	315	PHE	CA-CB-CG	5.77	119.57	113.80
1	E	229	VAL	N-CA-CB	5.66	117.17	110.55
1	C	315	PHE	CA-CB-CG	5.65	119.45	113.80
1	E	41	ALA	N-CA-C	5.63	116.79	108.86
1	C	229	VAL	N-CA-CB	5.62	117.13	110.55
1	D	229	VAL	N-CA-CB	5.62	117.12	110.55
1	A	266	TYR	N-CA-C	-5.59	104.81	111.69
1	D	266	TYR	N-CA-C	-5.59	104.82	111.69
1	D	41	ALA	N-CA-C	5.53	116.65	108.86
1	E	202	ILE	N-CA-C	5.53	115.77	110.74
1	A	202	ILE	N-CA-C	5.52	115.61	110.42
1	C	202	ILE	N-CA-C	5.52	115.76	110.74
1	C	28	TYR	CA-C-N	5.49	132.02	121.54
1	C	28	TYR	C-N-CA	5.49	132.02	121.54
1	C	207	PHE	CA-CB-CG	5.47	119.28	113.80
1	C	154	ASP	CA-CB-CG	5.45	118.05	112.60
1	B	7	PRO	N-CA-C	5.42	117.31	110.70
1	D	202	ILE	N-CA-C	5.42	115.67	110.74
1	E	28	TYR	CA-C-N	5.40	131.85	121.54
1	E	28	TYR	C-N-CA	5.40	131.85	121.54
1	B	41	ALA	N-CA-C	5.38	116.44	108.86
1	E	315	PHE	CA-CB-CG	5.37	119.17	113.80
1	A	41	ALA	N-CA-C	5.35	116.41	108.86
1	D	315	PHE	CA-CB-CG	5.29	119.08	113.80
1	E	309	ILE	CA-C-N	5.25	128.08	120.79
1	E	309	ILE	C-N-CA	5.25	128.08	120.79
1	B	28	TYR	CA-C-N	5.16	131.40	121.54

Continued on next page...

Continued from previous page...

Mol	Chain	Res	Type	Atoms	Z	Observed(°)	Ideal(°)
1	B	28	TYR	C-N-CA	5.16	131.40	121.54
1	A	154	ASP	CA-CB-CG	5.16	117.76	112.60
1	D	28	TYR	CA-C-N	5.15	131.38	121.54
1	D	28	TYR	C-N-CA	5.15	131.38	121.54
1	E	207	PHE	CA-CB-CG	5.14	118.94	113.80
1	B	207	PHE	CA-CB-CG	5.14	118.94	113.80
1	C	309	ILE	CA-C-N	5.12	127.90	120.79
1	C	309	ILE	C-N-CA	5.12	127.90	120.79
1	A	125	THR	CB-CA-C	5.12	118.09	110.62
1	B	315	PHE	CA-CB-CG	5.12	118.92	113.80
1	B	229	VAL	N-CA-CB	5.05	116.45	110.55
1	A	28	TYR	CA-C-N	5.03	131.15	121.54
1	A	28	TYR	C-N-CA	5.03	131.15	121.54
1	A	309	ILE	CA-C-N	5.01	127.75	120.79
1	A	309	ILE	C-N-CA	5.01	127.75	120.79
1	B	309	ILE	CA-C-N	5.01	127.75	120.79
1	B	309	ILE	C-N-CA	5.01	127.75	120.79

There are no chirality outliers.

There are no planarity outliers.

5.2 Too-close contacts [\(i\)](#)

In the following table, the Non-H and H(model) columns list the number of non-hydrogen atoms and hydrogen atoms in the chain respectively. The H(added) column lists the number of hydrogen atoms added and optimized by MolProbity. The Clashes column lists the number of clashes within the asymmetric unit, whereas Symm-Clashes lists symmetry-related clashes.

Mol	Chain	Non-H	H(model)	H(added)	Clashes	Symm-Clashes
1	A	2524	0	2548	37	0
1	B	2524	0	2548	44	0
1	C	2524	0	2547	46	0
1	D	2524	0	2547	40	0
1	E	2524	0	2548	41	0
2	A	1	0	0	0	0
2	B	1	0	0	0	0
2	C	1	0	0	0	0
2	D	1	0	0	0	0
2	E	1	0	0	0	0
3	A	12	0	23	1	0
4	C	1	0	0	0	0

Continued on next page...

Continued from previous page...

Mol	Chain	Non-H	H(model)	H(added)	Clashes	Symm-Clashes
All	All	12638	0	12761	194	0

The all-atom clashscore is defined as the number of clashes found per 1000 atoms (including hydrogen atoms). The all-atom clashscore for this structure is 8.

All (194) close contacts within the same asymmetric unit are listed below, sorted by their clash magnitude.

Atom-1	Atom-2	Interatomic distance (Å)	Clash overlap (Å)
1:E:297:ILE:CG1	1:E:297:ILE:CD1	1.75	1.60
1:C:197:TYR:CE2	1:C:202:ILE:HD11	2.10	0.85
1:C:197:TYR:CD2	1:C:202:ILE:HD11	2.20	0.77
1:B:78:PHE:HE2	1:B:85:ARG:HD3	1.50	0.76
1:B:11:ILE:HD11	1:B:50:ARG:NE	2.02	0.75
1:A:78:PHE:HE2	1:A:85:ARG:HD3	1.52	0.75
1:D:78:PHE:HE2	1:D:85:ARG:HD3	1.52	0.74
1:C:78:PHE:HE2	1:C:85:ARG:HD3	1.52	0.73
1:E:78:PHE:HE2	1:E:85:ARG:HD3	1.52	0.73
1:B:11:ILE:HD11	1:B:50:ARG:CD	2.21	0.71
1:D:10:PRO:HB2	1:D:12:ALA:O	1.95	0.67
1:C:10:PRO:HB2	1:C:12:ALA:O	1.97	0.65
1:A:257:ALA:HB1	1:A:310:LEU:HD21	1.78	0.65
1:D:257:ALA:HB1	1:D:310:LEU:HD21	1.79	0.64
1:E:257:ALA:HB1	1:E:310:LEU:HD21	1.82	0.62
1:A:14:GLU:OE2	1:A:138:ARG:NH2	2.34	0.61
1:B:257:ALA:HB1	1:B:310:LEU:HD21	1.82	0.61
1:A:7:PRO:HG3	1:A:135:VAL:HG21	1.82	0.61
1:C:257:ALA:HB1	1:C:310:LEU:HD21	1.83	0.60
1:D:78:PHE:CE2	1:D:85:ARG:HD3	2.36	0.60
1:B:78:PHE:CE2	1:B:85:ARG:HD3	2.35	0.60
1:B:136:ASP:HB3	1:B:179:ARG:HH21	1.68	0.59
1:A:17:THR:HG23	1:A:141:VAL:HG23	1.85	0.59
1:E:136:ASP:HB3	1:E:179:ARG:HH21	1.68	0.59
1:A:78:PHE:CE2	1:A:85:ARG:HD3	2.36	0.58
1:B:17:THR:HG23	1:B:141:VAL:HG23	1.84	0.58
1:B:12:ALA:HB3	1:B:14:GLU:OE1	2.03	0.58
1:B:11:ILE:CD1	1:B:50:ARG:NE	2.66	0.58
1:B:7:PRO:HG3	1:B:135:VAL:HG21	1.86	0.58
1:B:16:LEU:HD11	1:B:47:TRP:HB2	1.86	0.58
1:C:136:ASP:HB3	1:C:179:ARG:HH21	1.69	0.58
1:C:17:THR:HG23	1:C:141:VAL:HG23	1.87	0.57
1:D:17:THR:HG23	1:D:141:VAL:HG23	1.86	0.57

Continued on next page...

Continued from previous page...

Atom-1	Atom-2	Interatomic distance (Å)	Clash overlap (Å)
1:A:268:VAL:HA	1:A:271:ILE:HD12	1.87	0.56
1:E:78:PHE:CE2	1:E:85:ARG:HD3	2.37	0.56
1:B:268:VAL:HA	1:B:271:ILE:HD12	1.88	0.56
1:D:136:ASP:HB3	1:D:179:ARG:HH21	1.70	0.56
1:E:17:THR:HG23	1:E:141:VAL:HG23	1.88	0.56
1:B:11:ILE:CD1	1:B:50:ARG:CZ	2.83	0.55
1:D:7:PRO:HG3	1:D:135:VAL:HG21	1.88	0.55
1:E:10:PRO:HB2	1:E:12:ALA:O	2.07	0.55
1:E:268:VAL:HA	1:E:271:ILE:HD12	1.89	0.55
1:C:78:PHE:CE2	1:C:85:ARG:HD3	2.37	0.55
1:E:77:ARG:HH22	1:E:133:ARG:HB2	1.72	0.55
1:D:268:VAL:HA	1:D:271:ILE:HD12	1.88	0.54
1:C:268:VAL:HA	1:C:271:ILE:HD12	1.89	0.54
1:A:136:ASP:HB3	1:A:179:ARG:HH21	1.71	0.54
1:C:77:ARG:HH22	1:C:133:ARG:HB2	1.74	0.53
1:A:16:LEU:HD11	1:A:47:TRP:HB2	1.89	0.53
1:D:77:ARG:HH22	1:D:133:ARG:HB2	1.74	0.53
1:C:16:LEU:HD11	1:C:47:TRP:HB2	1.91	0.53
1:A:80:ASN:HA	1:E:26:GLU:HG3	1.89	0.52
1:C:208:ILE:HG22	1:D:232:LEU:HD21	1.90	0.52
1:A:77:ARG:HH22	1:A:133:ARG:HB2	1.75	0.52
1:E:16:LEU:HD11	1:E:47:TRP:HB2	1.92	0.52
1:E:131:ILE:HD11	1:E:181:GLU:HB3	1.92	0.52
1:C:7:PRO:HG3	1:C:135:VAL:HG21	1.91	0.52
1:D:16:LEU:HD11	1:D:47:TRP:HB2	1.90	0.52
1:B:77:ARG:HH22	1:B:133:ARG:HB2	1.74	0.51
1:C:168:VAL:HG22	1:C:185:ASP:HB3	1.91	0.51
1:D:168:VAL:HG22	1:D:185:ASP:HB3	1.92	0.50
1:E:152:ASN:HB3	1:E:155:VAL:HG23	1.93	0.50
1:E:7:PRO:HG3	1:E:135:VAL:HG21	1.94	0.50
1:D:225:VAL:O	1:D:229:VAL:HG23	2.11	0.50
1:C:24:LEU:HD22	1:C:39:VAL:HG21	1.93	0.50
1:C:152:ASN:HB3	1:C:155:VAL:HG23	1.93	0.49
1:A:168:VAL:HG22	1:A:185:ASP:HB3	1.94	0.49
1:B:152:ASN:HB3	1:B:155:VAL:HG23	1.94	0.49
1:B:11:ILE:HD11	1:B:50:ARG:CZ	2.42	0.49
1:C:225:VAL:O	1:C:229:VAL:HG23	2.12	0.49
1:E:168:VAL:HG22	1:E:185:ASP:HB3	1.94	0.49
1:B:168:VAL:HG22	1:B:185:ASP:HB3	1.94	0.49
1:D:24:LEU:HD22	1:D:39:VAL:HG21	1.95	0.49
1:D:152:ASN:HB3	1:D:155:VAL:HG23	1.94	0.49

Continued on next page...

Continued from previous page...

Atom-1	Atom-2	Interatomic distance (Å)	Clash overlap (Å)
1:E:24:LEU:HD22	1:E:39:VAL:HG21	1.93	0.49
1:A:24:LEU:HD22	1:A:39:VAL:HG21	1.96	0.48
1:A:152:ASN:HB3	1:A:155:VAL:HG23	1.96	0.48
1:C:56:PRO:HD3	1:C:96:PRO:HB3	1.96	0.48
1:B:26:GLU:HG3	1:C:80:ASN:HA	1.96	0.48
1:D:208:ILE:HG22	1:E:232:LEU:HD21	1.95	0.47
1:D:211:ILE:HG23	1:E:270:VAL:HG11	1.95	0.47
1:E:21:GLY:HA2	1:E:149:VAL:HG22	1.97	0.47
1:C:255:THR:HA	1:C:258:ILE:HD12	1.96	0.47
1:A:232:LEU:HD21	1:E:208:ILE:HG22	1.95	0.47
1:C:198:ILE:HA	1:C:202:ILE:HD12	1.97	0.47
1:B:24:LEU:HD22	1:B:39:VAL:HG21	1.96	0.47
1:E:225:VAL:O	1:E:229:VAL:HG23	2.15	0.47
1:D:255:THR:HA	1:D:258:ILE:HD12	1.97	0.46
1:D:21:GLY:HA2	1:D:149:VAL:HG22	1.98	0.46
1:E:255:THR:HA	1:E:258:ILE:HD12	1.97	0.46
3:A:402:LMT:H41	1:C:240:ILE:HG21	1.98	0.46
1:B:90:VAL:HG13	1:C:77:ARG:NH1	2.31	0.46
1:A:203:LEU:HD23	1:A:203:LEU:HA	1.80	0.46
1:C:11:ILE:H	1:C:11:ILE:HG13	1.67	0.45
1:A:134:SER:HA	1:A:140:ILE:HD12	1.98	0.45
1:B:21:GLY:HA2	1:B:149:VAL:HG22	1.99	0.45
1:C:52:LEU:HB3	1:C:94:VAL:HG11	1.99	0.45
1:A:52:LEU:HB3	1:A:94:VAL:HG11	1.99	0.45
1:A:255:THR:HA	1:A:258:ILE:HD12	1.97	0.45
1:D:52:LEU:HB3	1:D:94:VAL:HG11	1.99	0.45
1:E:120:PRO:HG3	1:E:197:TYR:CD1	2.51	0.45
1:E:285:PRO:HA	1:E:288:ALA:HB3	1.97	0.45
1:C:134:SER:HA	1:C:140:ILE:HD12	1.98	0.45
1:C:285:PRO:HA	1:C:288:ALA:HB3	1.99	0.45
1:A:21:GLY:HA2	1:A:149:VAL:HG22	1.97	0.45
1:A:306:ALA:O	1:A:310:LEU:HB2	2.16	0.45
1:B:52:LEU:HB3	1:B:94:VAL:HG11	1.99	0.45
1:B:255:THR:HA	1:B:258:ILE:HD12	1.98	0.45
1:B:225:VAL:O	1:B:229:VAL:HG23	2.16	0.45
1:E:247:PRO:HG2	1:E:253:THR:HG21	1.97	0.45
1:D:224:ASN:O	1:D:228:VAL:HG23	2.17	0.45
1:C:224:ASN:O	1:C:228:VAL:HG23	2.17	0.45
1:D:17:THR:HA	1:D:141:VAL:O	2.16	0.45
1:A:208:ILE:HG22	1:B:232:LEU:HD21	1.98	0.45
1:E:52:LEU:HB3	1:E:94:VAL:HG11	1.99	0.45

Continued on next page...

Continued from previous page...

Atom-1	Atom-2	Interatomic distance (Å)	Clash overlap (Å)
1:A:120:PRO:HD2	1:A:121:PHE:CE2	2.51	0.45
1:D:203:LEU:HD23	1:D:203:LEU:HA	1.80	0.45
1:B:306:ALA:O	1:B:310:LEU:HB2	2.16	0.44
1:C:211:ILE:HG23	1:D:270:VAL:HG11	1.99	0.44
1:A:224:ASN:O	1:A:228:VAL:HG23	2.17	0.44
1:D:120:PRO:HG3	1:D:197:TYR:CD1	2.52	0.44
1:B:211:ILE:HG23	1:C:270:VAL:HG11	1.98	0.44
1:E:224:ASN:O	1:E:228:VAL:HG23	2.16	0.44
1:A:285:PRO:HA	1:A:288:ALA:HB3	1.98	0.44
1:B:56:PRO:HD3	1:B:96:PRO:HB3	2.00	0.44
1:C:120:PRO:HG3	1:C:197:TYR:CD1	2.53	0.44
1:D:134:SER:HA	1:D:140:ILE:HD12	1.98	0.44
1:C:21:GLY:HA2	1:C:149:VAL:HG22	1.98	0.44
1:B:134:SER:HA	1:B:140:ILE:HD12	2.00	0.44
1:B:247:PRO:HG2	1:B:253:THR:HG21	2.00	0.44
1:C:17:THR:HA	1:C:141:VAL:O	2.18	0.44
1:B:208:ILE:HG22	1:C:232:LEU:HD21	2.00	0.44
1:D:120:PRO:HD2	1:D:121:PHE:CE2	2.53	0.44
1:D:285:PRO:HA	1:D:288:ALA:HB3	1.99	0.44
1:E:134:SER:HA	1:E:140:ILE:HD12	2.00	0.44
1:A:120:PRO:HG3	1:A:197:TYR:CD1	2.53	0.43
1:E:306:ALA:O	1:E:310:LEU:HB2	2.18	0.43
1:B:120:PRO:HD2	1:B:121:PHE:CE2	2.53	0.43
1:B:285:PRO:HA	1:B:288:ALA:HB3	2.00	0.43
1:A:225:VAL:O	1:A:229:VAL:HG23	2.17	0.43
1:D:241:LEU:HD13	1:E:240:ILE:HG13	2.00	0.43
1:E:56:PRO:HD3	1:E:96:PRO:HB3	1.99	0.43
1:A:120:PRO:HG3	1:A:197:TYR:CG	2.53	0.43
1:C:247:PRO:HG2	1:C:253:THR:HG21	2.00	0.43
1:C:306:ALA:O	1:C:310:LEU:HB2	2.18	0.43
1:B:120:PRO:HG3	1:B:197:TYR:CD1	2.54	0.43
1:A:17:THR:HA	1:A:141:VAL:O	2.18	0.43
1:A:56:PRO:HD3	1:A:96:PRO:HB3	2.01	0.43
1:C:284:GLN:OE1	1:C:287:ARG:HD3	2.19	0.43
1:D:252:MET:HE3	1:D:257:ALA:HA	2.01	0.43
1:E:17:THR:HA	1:E:141:VAL:O	2.19	0.43
1:E:203:LEU:HD23	1:E:203:LEU:HA	1.78	0.43
1:B:284:GLN:OE1	1:B:287:ARG:HD3	2.19	0.43
1:C:203:LEU:HD23	1:C:203:LEU:HA	1.76	0.43
1:D:120:PRO:HG3	1:D:197:TYR:CG	2.53	0.43
1:C:295:SER:HA	1:C:298:ALA:HB3	2.00	0.42

Continued on next page...

Continued from previous page...

Atom-1	Atom-2	Interatomic distance (Å)	Clash overlap (Å)
1:D:162:ILE:HG23	1:D:188:LEU:HD11	2.00	0.42
1:E:131:ILE:HG12	1:E:181:GLU:OE1	2.19	0.42
1:A:295:SER:HA	1:A:298:ALA:HB3	2.00	0.42
1:B:240:ILE:O	1:B:243:GLU:HB2	2.19	0.42
1:D:295:SER:HA	1:D:298:ALA:HB3	2.01	0.42
1:E:120:PRO:HD2	1:E:121:PHE:CE2	2.54	0.42
1:E:76:ILE:HD13	1:E:132:VAL:HB	2.02	0.42
1:E:295:SER:HA	1:E:298:ALA:HB3	2.02	0.42
1:B:17:THR:HA	1:B:141:VAL:O	2.18	0.42
1:C:120:PRO:HD2	1:C:121:PHE:CE2	2.55	0.42
1:E:162:ILE:HG23	1:E:188:LEU:HD11	2.01	0.42
1:B:226:THR:O	1:B:230:SER:HB2	2.20	0.42
1:B:224:ASN:O	1:B:228:VAL:HG23	2.19	0.42
1:C:240:ILE:O	1:C:243:GLU:HB2	2.20	0.42
1:E:254:TYR:CE2	1:E:258:ILE:HD11	2.55	0.42
1:A:162:ILE:HG23	1:A:188:LEU:HD11	2.02	0.41
1:A:252:MET:HE3	1:A:257:ALA:HA	2.00	0.41
1:D:11:ILE:H	1:D:11:ILE:HG13	1.67	0.41
1:B:203:LEU:HD23	1:B:203:LEU:HA	1.80	0.41
1:E:284:GLN:OE1	1:E:287:ARG:HD3	2.19	0.41
1:B:254:TYR:CZ	1:B:258:ILE:HD11	2.55	0.41
1:D:306:ALA:O	1:D:310:LEU:HB2	2.19	0.41
1:D:247:PRO:HG2	1:D:253:THR:HG21	2.03	0.41
1:A:254:TYR:CE2	1:A:258:ILE:HD11	2.55	0.41
1:A:229:VAL:O	1:A:233:ILE:HG23	2.21	0.41
1:A:247:PRO:HG2	1:A:253:THR:HG21	2.03	0.41
1:A:284:GLN:OE1	1:A:287:ARG:HD3	2.20	0.41
1:B:295:SER:HA	1:B:298:ALA:HB3	2.03	0.41
1:C:76:ILE:HD13	1:C:132:VAL:HB	2.01	0.41
1:C:214:THR:HB	1:D:274:THR:HG21	2.03	0.41
1:D:56:PRO:HD3	1:D:96:PRO:HB3	2.01	0.41
1:E:120:PRO:HG3	1:E:197:TYR:CG	2.56	0.41
1:D:254:TYR:CE2	1:D:258:ILE:HD11	2.56	0.40
1:B:254:TYR:CE2	1:B:258:ILE:HD11	2.56	0.40
1:C:202:ILE:HD12	1:C:202:ILE:H	1.84	0.40
1:D:240:ILE:O	1:D:243:GLU:HB2	2.21	0.40
1:C:120:PRO:HG3	1:C:197:TYR:CG	2.57	0.40
1:B:241:LEU:HD13	1:C:240:ILE:HG13	2.04	0.40

There are no symmetry-related clashes.

5.3 Torsion angles [i](#)

5.3.1 Protein backbone [i](#)

In the following table, the Percentiles column shows the percent Ramachandran outliers of the chain as a percentile score with respect to all X-ray entries followed by that with respect to entries of similar resolution.

The Analysed column shows the number of residues for which the backbone conformation was analysed, and the total number of residues.

Mol	Chain	Analysed	Favoured	Allowed	Outliers	Percentiles	
1	A	309/317 (98%)	290 (94%)	18 (6%)	1 (0%)	36	65
1	B	309/317 (98%)	291 (94%)	17 (6%)	1 (0%)	36	65
1	C	309/317 (98%)	287 (93%)	21 (7%)	1 (0%)	36	65
1	D	309/317 (98%)	288 (93%)	20 (6%)	1 (0%)	36	65
1	E	309/317 (98%)	290 (94%)	18 (6%)	1 (0%)	36	65
All	All	1545/1585 (98%)	1446 (94%)	94 (6%)	5 (0%)	36	65

All (5) Ramachandran outliers are listed below:

Mol	Chain	Res	Type
1	A	245	ASN
1	B	245	ASN
1	C	245	ASN
1	D	245	ASN
1	E	245	ASN

5.3.2 Protein sidechains [i](#)

In the following table, the Percentiles column shows the percent sidechain outliers of the chain as a percentile score with respect to all X-ray entries followed by that with respect to entries of similar resolution.

The Analysed column shows the number of residues for which the sidechain conformation was analysed, and the total number of residues.

Mol	Chain	Analysed	Rotameric	Outliers	Percentiles	
1	A	280/284 (99%)	255 (91%)	25 (9%)	9	31
1	B	280/284 (99%)	254 (91%)	26 (9%)	8	29
1	C	280/284 (99%)	252 (90%)	28 (10%)	7	26
1	D	280/284 (99%)	253 (90%)	27 (10%)	8	28

Continued on next page...

Continued from previous page...

Mol	Chain	Analysed	Rotameric	Outliers	Percentiles	
1	E	280/284 (99%)	250 (89%)	30 (11%)	6	23
All	All	1400/1420 (99%)	1264 (90%)	136 (10%)	8	28

All (136) residues with a non-rotameric sidechain are listed below:

Mol	Chain	Res	Type
1	A	14	GLU
1	A	17	THR
1	A	62	ARG
1	A	71	ILE
1	A	107	SER
1	A	110	VAL
1	A	111	LEU
1	A	120	PRO
1	A	136	ASP
1	A	189	ARG
1	A	198	ILE
1	A	227	LEU
1	A	229	VAL
1	A	233	ILE
1	A	239	ASN
1	A	244	THR
1	A	245	ASN
1	A	273	VAL
1	A	281	VAL
1	A	290	SER
1	A	291	ILE
1	A	292	THR
1	A	307	ASN
1	A	310	LEU
1	A	312	PHE
1	B	13	ASP
1	B	17	THR
1	B	63	VAL
1	B	71	ILE
1	B	107	SER
1	B	109	ARG
1	B	110	VAL
1	B	111	LEU
1	B	120	PRO
1	B	136	ASP
1	B	189	ARG

Continued on next page...

Continued from previous page...

Mol	Chain	Res	Type
1	B	198	ILE
1	B	227	LEU
1	B	229	VAL
1	B	233	ILE
1	B	239	ASN
1	B	244	THR
1	B	245	ASN
1	B	273	VAL
1	B	281	VAL
1	B	290	SER
1	B	291	ILE
1	B	292	THR
1	B	307	ASN
1	B	310	LEU
1	B	312	PHE
1	C	5	VAL
1	C	11	ILE
1	C	13	ASP
1	C	17	THR
1	C	62	ARG
1	C	63	VAL
1	C	71	ILE
1	C	107	SER
1	C	110	VAL
1	C	111	LEU
1	C	120	PRO
1	C	136	ASP
1	C	189	ARG
1	C	198	ILE
1	C	227	LEU
1	C	229	VAL
1	C	233	ILE
1	C	239	ASN
1	C	244	THR
1	C	245	ASN
1	C	273	VAL
1	C	281	VAL
1	C	290	SER
1	C	291	ILE
1	C	292	THR
1	C	307	ASN
1	C	310	LEU

Continued on next page...

Continued from previous page...

Mol	Chain	Res	Type
1	C	312	PHE
1	D	11	ILE
1	D	13	ASP
1	D	17	THR
1	D	62	ARG
1	D	63	VAL
1	D	71	ILE
1	D	107	SER
1	D	110	VAL
1	D	111	LEU
1	D	120	PRO
1	D	136	ASP
1	D	189	ARG
1	D	198	ILE
1	D	227	LEU
1	D	229	VAL
1	D	233	ILE
1	D	239	ASN
1	D	244	THR
1	D	245	ASN
1	D	273	VAL
1	D	281	VAL
1	D	290	SER
1	D	291	ILE
1	D	292	THR
1	D	307	ASN
1	D	310	LEU
1	D	312	PHE
1	E	5	VAL
1	E	11	ILE
1	E	13	ASP
1	E	17	THR
1	E	62	ARG
1	E	63	VAL
1	E	71	ILE
1	E	79	VAL
1	E	107	SER
1	E	110	VAL
1	E	111	LEU
1	E	120	PRO
1	E	131	ILE
1	E	136	ASP

Continued on next page...

Continued from previous page...

Mol	Chain	Res	Type
1	E	189	ARG
1	E	198	ILE
1	E	227	LEU
1	E	229	VAL
1	E	233	ILE
1	E	239	ASN
1	E	244	THR
1	E	245	ASN
1	E	273	VAL
1	E	281	VAL
1	E	290	SER
1	E	291	ILE
1	E	292	THR
1	E	307	ASN
1	E	310	LEU
1	E	312	PHE

Sometimes sidechains can be flipped to improve hydrogen bonding and reduce clashes. All (19) such sidechains are listed below:

Mol	Chain	Res	Type
1	A	200	ASN
1	A	245	ASN
1	A	307	ASN
1	B	152	ASN
1	B	200	ASN
1	B	245	ASN
1	B	307	ASN
1	C	152	ASN
1	C	200	ASN
1	C	245	ASN
1	C	307	ASN
1	D	83	ASN
1	D	200	ASN
1	D	245	ASN
1	D	307	ASN
1	E	83	ASN
1	E	200	ASN
1	E	245	ASN
1	E	307	ASN

5.3.3 RNA [i](#)

There are no RNA molecules in this entry.

5.4 Non-standard residues in protein, DNA, RNA chains [i](#)

There are no non-standard protein/DNA/RNA residues in this entry.

5.5 Carbohydrates [i](#)

There are no oligosaccharides in this entry.

5.6 Ligand geometry [i](#)

Of 6 ligands modelled in this entry, 5 are monoatomic - leaving 1 for Mogul analysis.

In the following table, the Counts columns list the number of bonds (or angles) for which Mogul statistics could be retrieved, the number of bonds (or angles) that are observed in the model and the number of bonds (or angles) that are defined in the Chemical Component Dictionary. The Link column lists molecule types, if any, to which the group is linked. The Z score for a bond length (or angle) is the number of standard deviations the observed value is removed from the expected value. A bond length (or angle) with $|Z| > 2$ is considered an outlier worth inspection. RMSZ is the root-mean-square of all Z scores of the bond lengths (or angles).

Mol	Type	Chain	Res	Link	Bond lengths			Bond angles		
					Counts	RMSZ	# Z > 2	Counts	RMSZ	# Z > 2
3	LMT	A	402	-	11,11,36	0.39	0	10,10,47	0.40	0

In the following table, the Chirals column lists the number of chiral outliers, the number of chiral centers analysed, the number of these observed in the model and the number defined in the Chemical Component Dictionary. Similar counts are reported in the Torsion and Rings columns. '-' means no outliers of that kind were identified.

Mol	Type	Chain	Res	Link	Chirals	Torsions	Rings
3	LMT	A	402	-	-	4/9/9/61	-

There are no bond length outliers.

There are no bond angle outliers.

There are no chirality outliers.

All (4) torsion outliers are listed below:

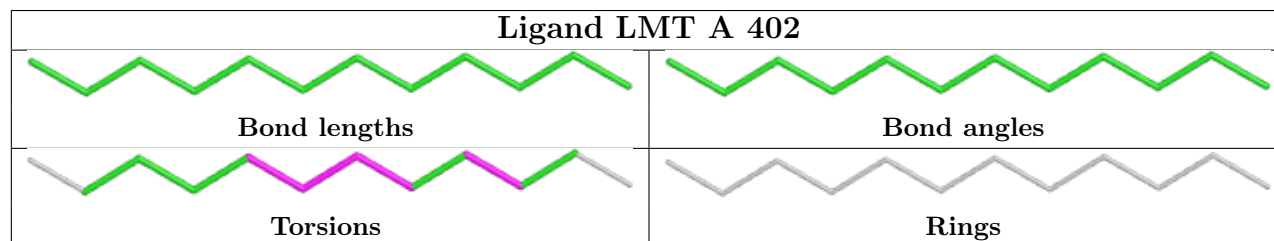
Mol	Chain	Res	Type	Atoms
3	A	402	LMT	C2-C3-C4-C5
3	A	402	LMT	C6-C7-C8-C9
3	A	402	LMT	C4-C5-C6-C7
3	A	402	LMT	C5-C6-C7-C8

There are no ring outliers.

1 monomer is involved in 1 short contact:

Mol	Chain	Res	Type	Clashes	Symm-Clashes
3	A	402	LMT	1	0

The following is a two-dimensional graphical depiction of Mogul quality analysis of bond lengths, bond angles, torsion angles, and ring geometry for all instances of the Ligand of Interest. In addition, ligands with molecular weight > 250 and outliers as shown on the validation Tables will also be included. For torsion angles, if less than 5% of the Mogul distribution of torsion angles is within 10 degrees of the torsion angle in question, then that torsion angle is considered an outlier. Any bond that is central to one or more torsion angles identified as an outlier by Mogul will be highlighted in the graph. For rings, the root-mean-square deviation (RMSD) between the ring in question and similar rings identified by Mogul is calculated over all ring torsion angles. If the average RMSD is greater than 60 degrees and the minimal RMSD between the ring in question and any Mogul-identified rings is also greater than 60 degrees, then that ring is considered an outlier. The outliers are highlighted in purple. The color gray indicates Mogul did not find sufficient equivalents in the CSD to analyse the geometry.



5.7 Other polymers [i](#)

There are no such residues in this entry.

5.8 Polymer linkage issues [i](#)

The following chains have linkage breaks:

Mol	Chain	Number of breaks
1	D	2
1	C	1

All chain breaks are listed below:

Model	Chain	Residue-1	Atom-1	Residue-2	Atom-2	Distance (Å)
1	D	12:ALA	C	13:ASP	N	1.61
1	C	11:ILE	C	12:ALA	N	1.14
1	D	11:ILE	C	12:ALA	N	1.13

6 Fit of model and data [i](#)

6.1 Protein, DNA and RNA chains [i](#)

In the following table, the column labelled ‘#RSRZ > 2’ contains the number (and percentage) of RSRZ outliers, followed by percent RSRZ outliers for the chain as percentile scores relative to all X-ray entries and entries of similar resolution. The OWAB column contains the minimum, median, 95th percentile and maximum values of the occupancy-weighted average B-factor per residue. The column labelled ‘Q < 0.9’ lists the number of (and percentage) of residues with an average occupancy less than 0.9.

Mol	Chain	Analysed	<RSRZ>	#RSRZ>2	OWAB(Å ²)	Q<0.9
1	A	311/317 (98%)	-0.15	3 (0%) 79 66	48, 105, 185, 229	0
1	B	311/317 (98%)	-0.23	1 (0%) 90 84	49, 98, 151, 180	0
1	C	311/317 (98%)	-0.19	3 (0%) 79 66	52, 102, 162, 184	0
1	D	311/317 (98%)	-0.08	2 (0%) 85 75	53, 114, 188, 215	0
1	E	311/317 (98%)	-0.12	3 (0%) 79 66	55, 107, 170, 189	0
All	All	1555/1585 (98%)	-0.16	12 (0%) 82 71	48, 106, 174, 229	0

All (12) RSRZ outliers are listed below:

Mol	Chain	Res	Type	RSRZ
1	C	191	SER	3.4
1	A	5	VAL	3.4
1	E	136	ASP	3.0
1	E	77	ARG	2.8
1	B	136	ASP	2.5
1	C	99	THR	2.5
1	D	63	VAL	2.5
1	A	63	VAL	2.5
1	D	11	ILE	2.4
1	A	61	VAL	2.1
1	C	148	LYS	2.1
1	E	73	ILE	2.0

6.2 Non-standard residues in protein, DNA, RNA chains [i](#)

There are no non-standard protein/DNA/RNA residues in this entry.

6.3 Carbohydrates [i](#)

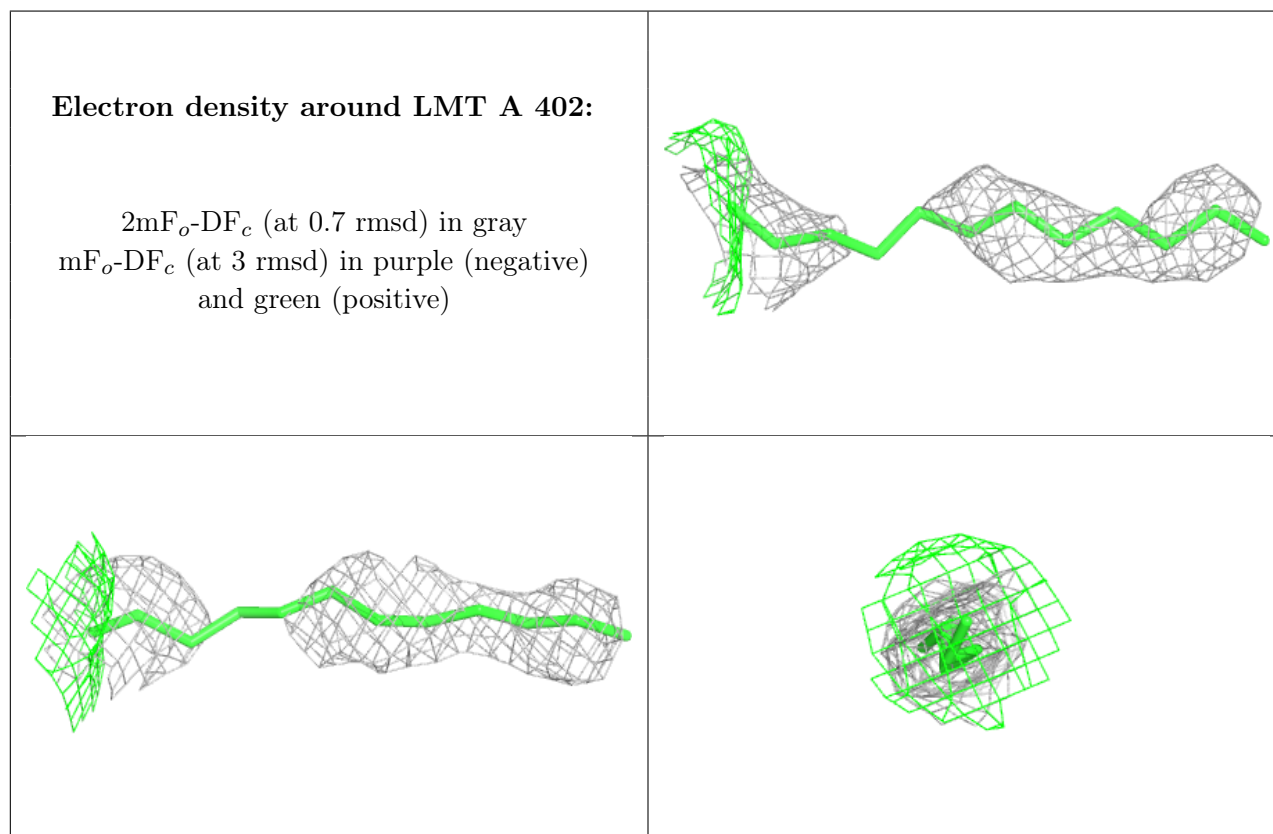
There are no oligosaccharides in this entry.

6.4 Ligands [i](#)

In the following table, the Atoms column lists the number of modelled atoms in the group and the number defined in the chemical component dictionary. The B-factors column lists the minimum, median, 95th percentile and maximum values of B factors of atoms in the group. The column labelled 'Q< 0.9' lists the number of atoms with occupancy less than 0.9.

Mol	Type	Chain	Res	Atoms	RSCC	RSR	B-factors(Å ²)	Q<0.9
2	CL	D	401	1/1	0.83	0.15	133,133,133,133	0
3	LMT	A	402	12/35	0.84	0.21	28,34,47,49	0
2	CL	E	401	1/1	0.85	0.16	117,117,117,117	0
2	CL	B	401	1/1	0.95	0.13	95,95,95,95	0
2	CL	C	401	1/1	0.97	0.18	116,116,116,116	0
2	CL	A	401	1/1	0.97	0.09	110,110,110,110	0

The following is a graphical depiction of the model fit to experimental electron density of all instances of the Ligand of Interest. In addition, ligands with molecular weight > 250 and outliers as shown on the geometry validation Tables will also be included. Each fit is shown from different orientation to approximate a three-dimensional view.



6.5 Other polymers [i](#)

There are no such residues in this entry.