



# Full wwPDB X-ray Structure Validation Report ⓘ

Mar 20, 2026 – 05:04 AM UTC

PDB ID : 7GNU / pdb\_00007gnu  
Title : Group deposition SARS-CoV-2 main protease in complex with inhibitors from the COVID Moonshot – Crystal Structure of SARS-CoV-2 main protease in complex with ALP-POS-133e7cd9-2 (Mpro-P3074)  
Authors : Fearon, D.; Aimon, A.; Aschenbrenner, J.C.; Balcomb, B.H.; Bertram, F.K.R.; Brandao-Neto, J.; Dias, A.; Douangamath, A.; Dunnett, L.; Godoy, A.S.; Gorrie-Stone, T.J.; Koekemoer, L.; Krojer, T.; Lithgo, R.M.; Lukacik, P.; Marples, P.G.; Mikolajek, H.; Nelson, E.; Owen, C.D.; Powell, A.J.; Rangel, V.L.; Skyner, R.; Strain-Damerell, C.M.; Thompson, W.; Tomlinson, C.W.E.; Wild, C.; Walsh, M.A.; von Delft, F.  
Deposited on : 2023-08-11  
Resolution : 1.48 Å(reported)

This is a Full wwPDB X-ray Structure Validation Report for a publicly released PDB entry.

We welcome your comments at [validation@mail.wwpdb.org](mailto:validation@mail.wwpdb.org)

A user guide is available at

<https://www.wwpdb.org/validation/2017/XrayValidationReportHelp>

with specific help available everywhere you see the ⓘ symbol.

The types of validation reports are described at

<http://www.wwpdb.org/validation/2017/FAQs#types>.

---

The following versions of software and data (see [references ⓘ](#)) were used in the production of this report:

MolProbity	: 4-5-2 with Phenix2.0
Mogul	: 2022.3.0, CSD as543be (2022)
Xtriage (Phenix)	: 2.0
EDS	: 3.0
Buster-report	: wwPDB partial adaption of 1.1.7 (2018)
Percentile statistics	: 20250101.v01 (using entries in the PDB archive January 1st 2025)

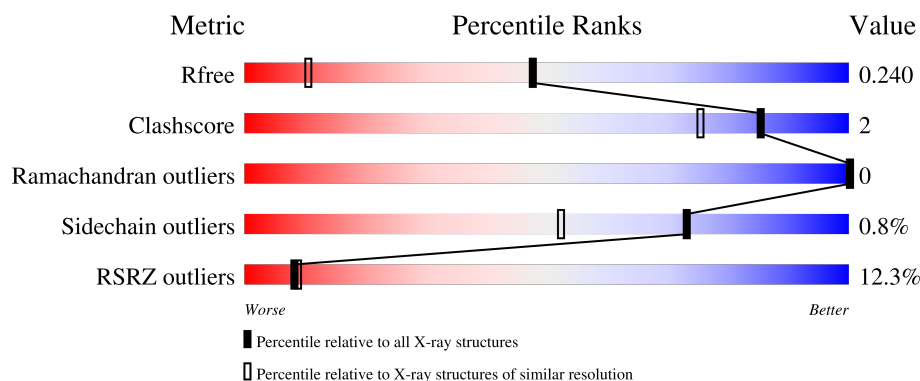
# 1 Overall quality at a glance

The following experimental techniques were used to determine the structure:

*X-RAY DIFFRACTION*

The reported resolution of this entry is 1.48 Å.

Percentile scores (ranging between 0-100) for global validation metrics of the entry are shown in the following graphic. The table shows the number of entries on which the scores are based.



Metric	Whole archive (#Entries)	Similar resolution (#Entries, resolution range(Å))
$R_{free}$	180053	6779 (1.50-1.46)
Clashscore	190562	7025 (1.50-1.46)
Ramachandran outliers	187476	6917 (1.50-1.46)
Sidechain outliers	187428	6914 (1.50-1.46)
RSRZ outliers	180081	6781 (1.50-1.46)

The table below summarises the geometric issues observed across the polymeric chains and their fit to the electron density. The red, orange, yellow and green segments of the lower bar indicate the fraction of residues that contain outliers for  $\geq 3$ , 2, 1 and 0 types of geometric quality criteria respectively. A grey segment represents the fraction of residues that are not modelled. The numeric value for each fraction is indicated below the corresponding segment, with a dot representing fractions  $\leq 5\%$ . The upper red bar (where present) indicates the fraction of residues that have poor fit to the electron density. The numeric value is given above the bar.

Mol	Chain	Length	Quality of chain
1	A	306	<div> <div>7%</div> <div>95%</div> <div>5%</div> </div>
1	B	306	<div> <div>17%</div> <div>95%</div> <div>.</div> </div>

CCP4 : 9.0.010 (Gargrove)  
 Density-Fitness : 1.0.12  
 Ideal geometry (proteins) : Engh & Huber (2001)  
 Ideal geometry (DNA, RNA) : Parkinson et al. (1996)  
 Validation Pipeline (wwPDB-VP) : 2.49

The following table lists non-polymeric compounds, carbohydrate monomers and non-standard residues in protein, DNA, RNA chains that are outliers for geometric or electron-density-fit criteria:

Mol	Type	Chain	Res	Chirality	Geometry	Clashes	Electron density
2	DMS	A	401	-	-	X	-
2	DMS	B	403	-	-	-	X

## 2 Entry composition [i](#)

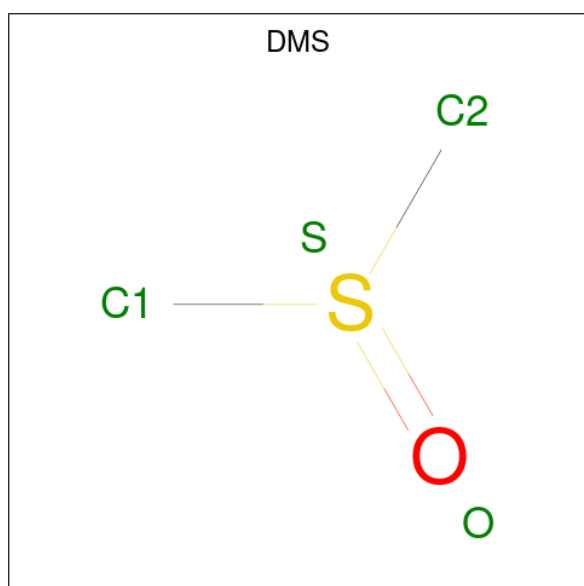
There are 5 unique types of molecules in this entry. The entry contains 5416 atoms, of which 0 are hydrogens and 0 are deuteriums.

In the tables below, the ZeroOcc column contains the number of atoms modelled with zero occupancy, the AltConf column contains the number of residues with at least one atom in alternate conformation and the Trace column contains the number of residues modelled with at most 2 atoms.

- Molecule 1 is a protein called 3C-like proteinase.

Mol	Chain	Residues	Atoms					ZeroOcc	AltConf	Trace
1	A	306	Total	C	N	O	S	0	3	0
			2388	1509	405	450	24			
1	B	305	Total	C	N	O	S	0	3	0
			2376	1503	403	446	24			

- Molecule 2 is DIMETHYL SULFOXIDE (CCD ID: DMS) (formula: C<sub>2</sub>H<sub>6</sub>OS).



Mol	Chain	Residues	Atoms				ZeroOcc	AltConf
2	A	1	Total	C	O	S	0	0
			4	2	1	1		
2	A	1	Total	C	O	S	0	0
			4	2	1	1		
2	A	1	Total	C	O	S	0	0
			4	2	1	1		
2	A	1	Total	C	O	S	0	0
			4	2	1	1		

*Continued on next page...*

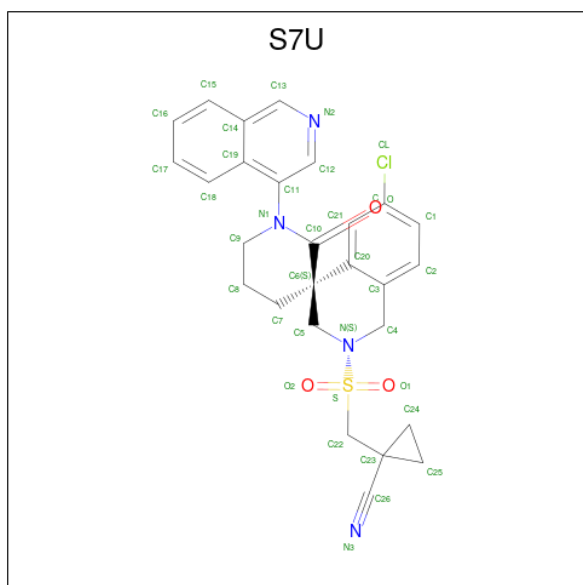
Continued from previous page...

Mol	Chain	Residues	Atoms				ZeroOcc	AltConf
2	A	1	Total	C	O	S	0	0
			4	2	1	1		
2	A	1	Total	C	O	S	0	0
			4	2	1	1		
2	A	1	Total	C	O	S	0	0
			4	2	1	1		
2	B	1	Total	C	O	S	0	0
			4	2	1	1		
2	B	1	Total	C	O	S	0	0
			4	2	1	1		
2	B	1	Total	C	O	S	0	0
			4	2	1	1		
2	B	1	Total	C	O	S	0	0
			4	2	1	1		

- Molecule 3 is CHLORIDE ION (CCD ID: CL) (formula: Cl).

Mol	Chain	Residues	Atoms		ZeroOcc	AltConf
3	A	1	Total	Cl	0	0
			1	1		

- Molecule 4 is 1-[[[(3'S)-6-chloro-1'-(isoquinolin-4-yl)-2'-oxo-1H-spiro[isoquinoline-4,3'-piperidine]-2(3H)-sulfonyl]methyl]cyclopropane-1-carbonitrile (CCD ID: S7U) (formula: C<sub>27</sub>H<sub>25</sub>ClN<sub>4</sub>O<sub>3</sub>S) (labeled as "Ligand of Interest" by depositor).



Mol	Chain	Residues	Atoms						ZeroOcc	AltConf
4	A	1	Total 36	C 27	Cl 1	N 4	O 3	S 1	0	0
4	B	1	Total 36	C 27	Cl 1	N 4	O 3	S 1	0	0

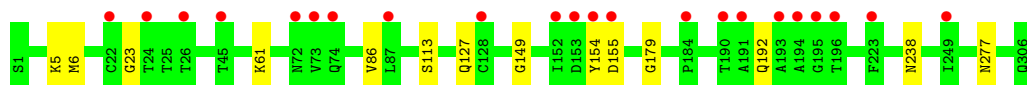
- Molecule 5 is water.

Mol	Chain	Residues	Atoms		ZeroOcc	AltConf
5	A	301	Total 301	O 301	0	0
5	B	230	Total 230	O 230	0	0

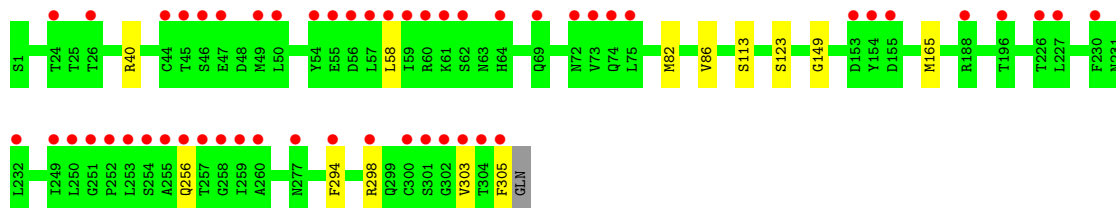
### 3 Residue-property plots [i](#)

These plots are drawn for all protein, RNA, DNA and oligosaccharide chains in the entry. The first graphic for a chain summarises the proportions of the various outlier classes displayed in the second graphic. The second graphic shows the sequence view annotated by issues in geometry and electron density. Residues are color-coded according to the number of geometric quality criteria for which they contain at least one outlier: green = 0, yellow = 1, orange = 2 and red = 3 or more. A red dot above a residue indicates a poor fit to the electron density ( $RSRZ > 2$ ). Stretches of 2 or more consecutive residues without any outlier are shown as a green connector. Residues present in the sample, but not in the model, are shown in grey.

#### • Molecule 1: 3C-like proteinase



#### • Molecule 1: 3C-like proteinase



## 4 Data and refinement statistics

Property	Value	Source
Space group	P 21 21 21	Depositor
Cell constants a, b, c, $\alpha$ , $\beta$ , $\gamma$	68.00Å 101.20Å 104.55Å 90.00° 90.00° 90.00°	Depositor
Resolution (Å)	72.72 – 1.48 72.72 – 1.48	Depositor EDS
% Data completeness (in resolution range)	99.2 (72.72-1.48) 99.2 (72.72-1.48)	Depositor EDS
$R_{merge}$	0.11	Depositor
$R_{sym}$	(Not available)	Depositor
$\langle I/\sigma(I) \rangle$ <sup>1</sup>	1.00 (at 1.48Å)	Xtriage
Refinement program	BUSTER 2.10.4 (20-OCT-2021)	Depositor
R, $R_{free}$	0.230 , 0.245 0.223 , 0.240	Depositor DCC
$R_{free}$ test set	6057 reflections (5.02%)	wwPDB-VP
Wilson B-factor (Å <sup>2</sup> )	21.3	Xtriage
Anisotropy	0.447	Xtriage
Bulk solvent $k_{sol}$ (e/Å <sup>3</sup> ), $B_{sol}$ (Å <sup>2</sup> )	0.32 , 30.9	EDS
L-test for twinning <sup>2</sup>	$\langle  L  \rangle = 0.49$ , $\langle L^2 \rangle = 0.33$	Xtriage
Estimated twinning fraction	0.013 for -h,l,k	Xtriage
$F_o, F_c$ correlation	0.96	EDS
Total number of atoms	5416	wwPDB-VP
Average B, all atoms (Å <sup>2</sup> )	29.0	wwPDB-VP

Xtriage's analysis on translational NCS is as follows: *The largest off-origin peak in the Patterson function is 4.09% of the height of the origin peak. No significant pseudotranslation is detected.*

<sup>1</sup>Intensities estimated from amplitudes.

<sup>2</sup>Theoretical values of  $\langle |L| \rangle$ ,  $\langle L^2 \rangle$  for acentric reflections are 0.5, 0.333 respectively for untwinned datasets, and 0.375, 0.2 for perfectly twinned datasets.



## 5 Model quality [i](#)

### 5.1 Standard geometry [i](#)

Bond lengths and bond angles in the following residue types are not validated in this section: S7U, DMS, CL

The Z score for a bond length (or angle) is the number of standard deviations the observed value is removed from the expected value. A bond length (or angle) with  $|Z| > 5$  is considered an outlier worth inspection. RMSZ is the root-mean-square of all Z scores of the bond lengths (or angles).

Mol	Chain	Bond lengths		Bond angles	
		RMSZ	$\# Z  > 5$	RMSZ	$\# Z  > 5$
1	A	0.73	0/2441	0.94	1/3316 (0.0%)
1	B	0.69	0/2429	0.93	1/3301 (0.0%)
All	All	0.71	0/4870	0.94	2/6617 (0.0%)

There are no bond length outliers.

All (2) bond angle outliers are listed below:

Mol	Chain	Res	Type	Atoms	Z	Observed(°)	Ideal(°)
1	A	192	GLN	N-CA-C	-5.31	100.38	109.24
1	B	165	MET	N-CA-C	5.27	117.08	109.07

There are no chirality outliers.

There are no planarity outliers.

### 5.2 Too-close contacts [i](#)

In the following table, the Non-H and H(model) columns list the number of non-hydrogen atoms and hydrogen atoms in the chain respectively. The H(added) column lists the number of hydrogen atoms added and optimized by MolProbity. The Clashes column lists the number of clashes within the asymmetric unit, whereas Symm-Clashes lists symmetry-related clashes.

Mol	Chain	Non-H	H(model)	H(added)	Clashes	Symm-Clashes
1	A	2388	0	2325	9	0
1	B	2376	0	2320	11	0
2	A	28	0	42	8	0
2	B	20	0	30	3	0
3	A	1	0	0	0	0
4	A	36	0	0	0	0
4	B	36	0	0	0	0

*Continued on next page...*

*Continued from previous page...*

Mol	Chain	Non-H	H(model)	H(added)	Clashes	Symm-Clashes
5	A	301	0	0	1	0
5	B	230	0	0	1	0
All	All	5416	0	4717	21	0

The all-atom clashscore is defined as the number of clashes found per 1000 atoms (including hydrogen atoms). The all-atom clashscore for this structure is 2.

All (21) close contacts within the same asymmetric unit are listed below, sorted by their clash magnitude.

Atom-1	Atom-2	Interatomic distance (Å)	Clash overlap (Å)
1:B:298:ARG:HE	2:B:401:DMS:H13	1.21	1.05
1:B:298:ARG:NE	2:B:401:DMS:H13	1.87	0.90
2:A:401:DMS:H23	5:B:522:HOH:O	1.84	0.77
2:A:401:DMS:H22	1:B:123:SER:OG	1.91	0.71
1:B:294:PHE:CE2	1:B:298:ARG:NH2	2.64	0.66
1:A:23:GLY:HA3	2:A:408:DMS:H23	1.76	0.65
1:B:298:ARG:HG3	1:B:303:VAL:HB	1.82	0.61
1:B:58:LEU:HD22	1:B:82:MET:HE3	1.82	0.60
1:A:277:ASN:HB2	5:A:741:HOH:O	2.02	0.58
1:A:61:LYS:NZ	2:A:408:DMS:H22	2.19	0.58
1:A:6:MET:SD	2:A:401:DMS:H21	2.50	0.52
1:B:298:ARG:HE	2:B:401:DMS:C1	2.08	0.50
1:A:5:LYS:HG2	1:A:127:GLN:HB3	1.95	0.47
1:B:298:ARG:HD2	1:B:305:PHE:HZ	1.80	0.47
1:A:61:LYS:HZ1	2:A:408:DMS:H22	1.82	0.45
1:A:238:ASN:OD1	2:A:409:DMS:S	2.76	0.44
1:A:86:VAL:HG13	1:A:179:GLY:HA2	1.99	0.44
2:A:401:DMS:H13	1:B:123:SER:HB2	1.99	0.44
1:B:40:ARG:HB2	1:B:82:MET:HE2	2.00	0.42
1:B:113:SER:O	1:B:149:GLY:HA2	2.20	0.42
1:A:113:SER:O	1:A:149:GLY:HA2	2.22	0.40

There are no symmetry-related clashes.

## 5.3 Torsion angles

### 5.3.1 Protein backbone

In the following table, the Percentiles column shows the percent Ramachandran outliers of the chain as a percentile score with respect to all X-ray entries followed by that with respect to entries of similar resolution.

The Analysed column shows the number of residues for which the backbone conformation was analysed, and the total number of residues.

Mol	Chain	Analysed	Favoured	Allowed	Outliers	Percentiles	
1	A	307/306 (100%)	301 (98%)	6 (2%)	0	100	100
1	B	305/306 (100%)	299 (98%)	6 (2%)	0	100	100
All	All	612/612 (100%)	600 (98%)	12 (2%)	0	100	100

There are no Ramachandran outliers to report.

### 5.3.2 Protein sidechains ⓘ

In the following table, the Percentiles column shows the percent sidechain outliers of the chain as a percentile score with respect to all X-ray entries followed by that with respect to entries of similar resolution.

The Analysed column shows the number of residues for which the sidechain conformation was analysed, and the total number of residues.

Mol	Chain	Analysed	Rotameric	Outliers	Percentiles	
1	A	266/263 (101%)	264 (99%)	2 (1%)	73	52
1	B	265/263 (101%)	263 (99%)	2 (1%)	73	52
All	All	531/526 (101%)	527 (99%)	4 (1%)	73	52

All (4) residues with a non-rotameric sidechain are listed below:

Mol	Chain	Res	Type
1	A	154	TYR
1	A	155	ASP
1	B	86	VAL
1	B	256	GLN

Sometimes sidechains can be flipped to improve hydrogen bonding and reduce clashes. All (5) such sidechains are listed below:

Mol	Chain	Res	Type
1	A	64	HIS
1	A	244	GLN
1	A	273	GLN
1	B	84	ASN
1	B	107	GLN

### 5.3.3 RNA ⓘ

There are no RNA molecules in this entry.

## 5.4 Non-standard residues in protein, DNA, RNA chains ⓘ

There are no non-standard protein/DNA/RNA residues in this entry.

## 5.5 Carbohydrates ⓘ

There are no oligosaccharides in this entry.

## 5.6 Ligand geometry ⓘ

Of 15 ligands modelled in this entry, 1 is monoatomic - leaving 14 for Mogul analysis.

In the following table, the Counts columns list the number of bonds (or angles) for which Mogul statistics could be retrieved, the number of bonds (or angles) that are observed in the model and the number of bonds (or angles) that are defined in the Chemical Component Dictionary. The Link column lists molecule types, if any, to which the group is linked. The Z score for a bond length (or angle) is the number of standard deviations the observed value is removed from the expected value. A bond length (or angle) with  $|Z| > 2$  is considered an outlier worth inspection. RMSZ is the root-mean-square of all Z scores of the bond lengths (or angles).

Mol	Type	Chain	Res	Link	Bond lengths			Bond angles		
					Counts	RMSZ	$\# Z  > 2$	Counts	RMSZ	$\# Z  > 2$
2	DMS	A	409	-	3,3,3	0.28	0	3,3,3	0.26	0
2	DMS	A	405	-	3,3,3	0.12	0	3,3,3	0.72	0
4	S7U	A	407	-	38,41,41	0.34	0	46,64,64	0.69	1 (2%)
2	DMS	B	401	-	3,3,3	0.20	0	3,3,3	0.23	0
2	DMS	B	402	-	3,3,3	0.29	0	3,3,3	0.33	0
2	DMS	A	403	-	3,3,3	0.21	0	3,3,3	0.24	0
2	DMS	B	406	-	3,3,3	0.29	0	3,3,3	0.35	0
2	DMS	B	405	-	3,3,3	0.32	0	3,3,3	0.25	0
2	DMS	A	406	-	3,3,3	0.35	0	3,3,3	0.50	0
2	DMS	A	402	-	3,3,3	0.29	0	3,3,3	0.45	0
2	DMS	A	408	-	3,3,3	0.26	0	3,3,3	0.26	0
4	S7U	B	404	-	38,41,41	0.34	0	46,64,64	0.75	1 (2%)
2	DMS	B	403	-	3,3,3	0.31	0	3,3,3	0.26	0
2	DMS	A	401	-	3,3,3	0.22	0	3,3,3	0.40	0

In the following table, the Chirals column lists the number of chiral outliers, the number of chiral centers analysed, the number of these observed in the model and the number defined in the

Chemical Component Dictionary. Similar counts are reported in the Torsion and Rings columns. '-' means no outliers of that kind were identified.

Mol	Type	Chain	Res	Link	Chirals	Torsions	Rings
4	S7U	A	407	-	-	6/13/55/55	0/6/6/6
4	S7U	B	404	-	-	6/13/55/55	0/6/6/6

There are no bond length outliers.

All (2) bond angle outliers are listed below:

Mol	Chain	Res	Type	Atoms	Z	Observed(°)	Ideal(°)
4	A	407	S7U	C9-N1-C11	-3.27	112.00	117.30
4	B	404	S7U	C7-C6-C10	2.00	114.22	109.40

There are no chirality outliers.

All (12) torsion outliers are listed below:

Mol	Chain	Res	Type	Atoms
4	B	404	S7U	C4-N-S-O2
4	A	407	S7U	C19-C11-N1-C9
4	A	407	S7U	C4-N-S-O1
4	A	407	S7U	C4-N-S-O2
4	B	404	S7U	C4-N-S-O1
4	A	407	S7U	C4-N-S-C22
4	A	407	S7U	C5-N-S-O1
4	A	407	S7U	C5-N-S-O2
4	B	404	S7U	C4-N-S-C22
4	B	404	S7U	C5-N-S-O1
4	B	404	S7U	C5-N-S-O2
4	B	404	S7U	C19-C11-N1-C9

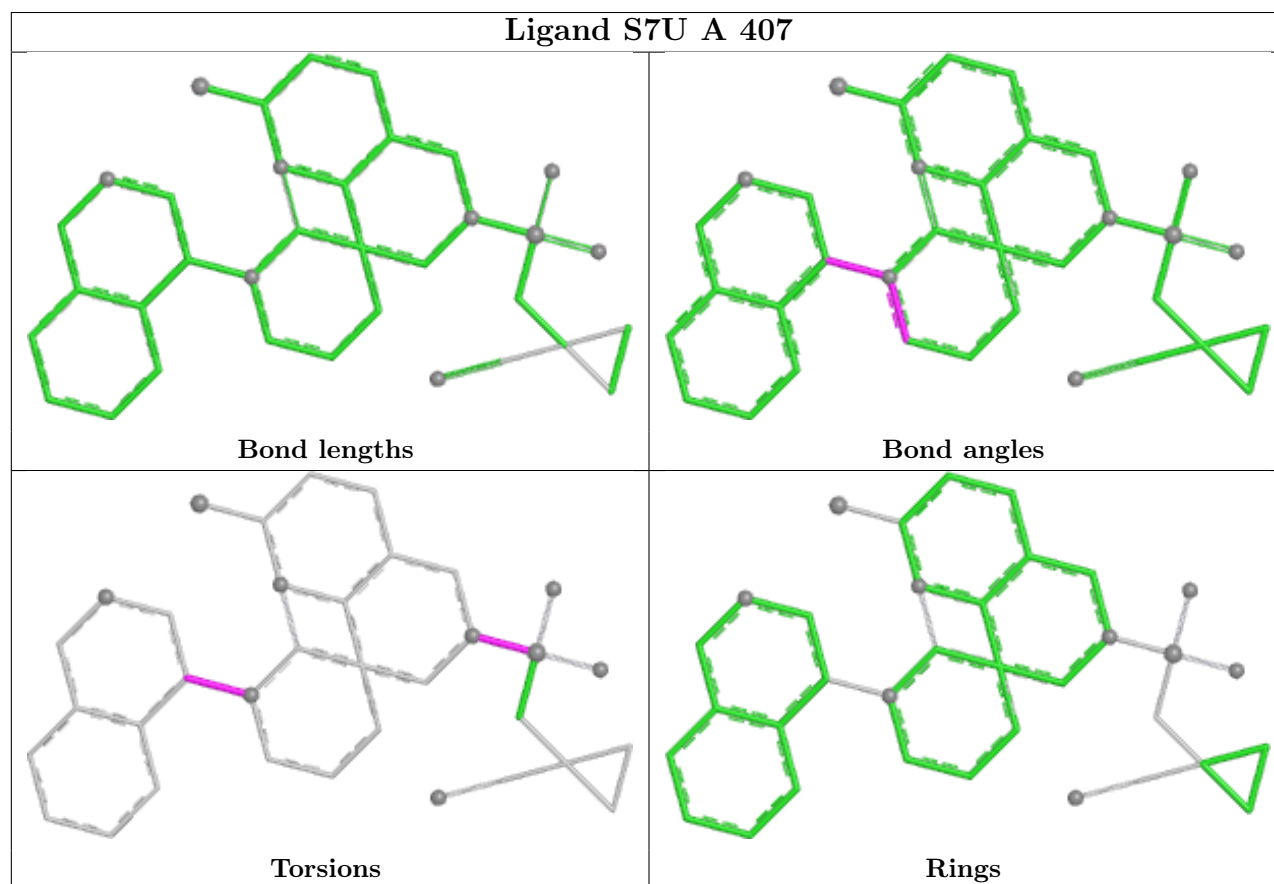
There are no ring outliers.

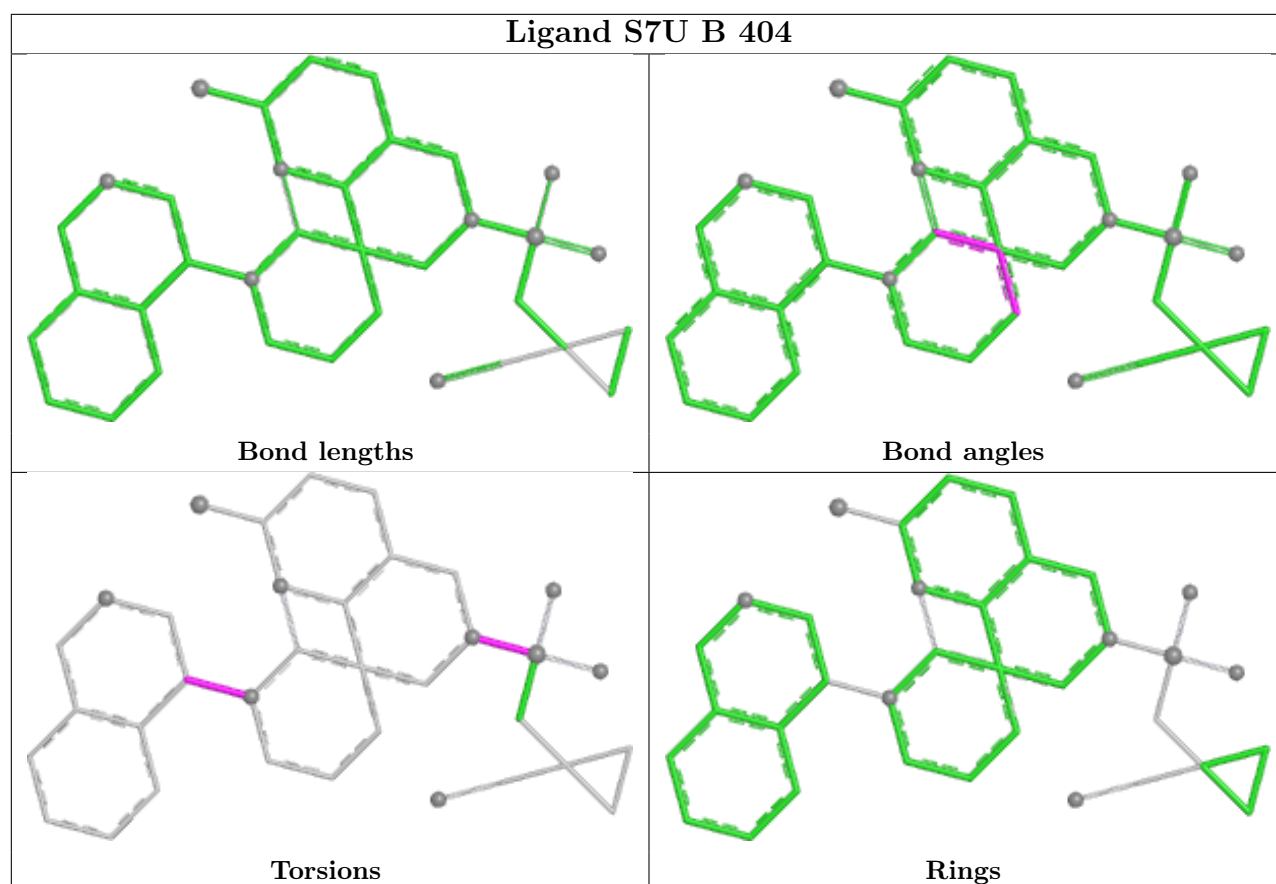
4 monomers are involved in 11 short contacts:

Mol	Chain	Res	Type	Clashes	Symm-Clashes
2	A	409	DMS	1	0
2	B	401	DMS	3	0
2	A	408	DMS	3	0
2	A	401	DMS	4	0

The following is a two-dimensional graphical depiction of Mogul quality analysis of bond lengths, bond angles, torsion angles, and ring geometry for all instances of the Ligand of Interest. In addition, ligands with molecular weight > 250 and outliers as shown on the validation Tables will

also be included. For torsion angles, if less than 5% of the Mogul distribution of torsion angles is within 10 degrees of the torsion angle in question, then that torsion angle is considered an outlier. Any bond that is central to one or more torsion angles identified as an outlier by Mogul will be highlighted in the graph. For rings, the root-mean-square deviation (RMSD) between the ring in question and similar rings identified by Mogul is calculated over all ring torsion angles. If the average RMSD is greater than 60 degrees and the minimal RMSD between the ring in question and any Mogul-identified rings is also greater than 60 degrees, then that ring is considered an outlier. The outliers are highlighted in purple. The color gray indicates Mogul did not find sufficient equivalents in the CSD to analyse the geometry.





## 5.7 Other polymers [i](#)

There are no such residues in this entry.

## 5.8 Polymer linkage issues [i](#)

There are no chain breaks in this entry.

## 6 Fit of model and data

### 6.1 Protein, DNA and RNA chains

In the following table, the column labelled ‘#RSRZ> 2’ contains the number (and percentage) of RSRZ outliers, followed by percent RSRZ outliers for the chain as percentile scores relative to all X-ray entries and entries of similar resolution. The OWAB column contains the minimum, median, 95<sup>th</sup> percentile and maximum values of the occupancy-weighted average B-factor per residue. The column labelled ‘Q< 0.9’ lists the number of (and percentage) of residues with an average occupancy less than 0.9.

Mol	Chain	Analysed	<RSRZ>	#RSRZ>2		OWAB(Å <sup>2</sup> )	Q<0.9
1	A	306/306 (100%)	0.56	22 (7%)	21 23	10, 25, 37, 49	3 (0%)
1	B	305/306 (99%)	0.96	53 (17%)	4 4	10, 27, 49, 69	3 (0%)
All	All	611/612 (99%)	0.76	75 (12%)	8 9	10, 26, 44, 69	6 (0%)

All (75) RSRZ outliers are listed below:

Mol	Chain	Res	Type	RSRZ
1	B	154	TYR	6.6
1	B	305	PHE	6.3
1	B	59	ILE	6.2
1	A	154	TYR	5.9
1	B	255	ALA	5.6
1	B	303	VAL	5.4
1	B	50	LEU	4.8
1	A	191	ALA	4.6
1	B	294	PHE	4.5
1	A	193	ALA	4.4
1	B	58	LEU	4.3
1	B	153	ASP	4.1
1	B	57	LEU	3.9
1	B	62	SER	3.8
1	A	194	ALA	3.8
1	A	190	THR	3.7
1	B	304	THR	3.7
1	B	60	ARG	3.7
1	B	72	ASN	3.6
1	B	259	ILE	3.6
1	B	253	LEU	3.6
1	A	72	ASN	3.6
1	B	188	ARG	3.5
1	B	56	ASP	3.5

*Continued on next page...*



*Continued from previous page...*

Mol	Chain	Res	Type	RSRZ
1	A	196	THR	3.5
1	B	257	THR	3.4
1	B	258	GLY	3.4
1	B	301	SER	3.4
1	B	302	GLY	3.3
1	A	26	THR	3.3
1	A	249	ILE	3.2
1	A	24	THR	3.2
1	B	61	LYS	3.1
1	B	54	TYR	3.0
1	B	155	ASP	2.8
1	B	64	HIS	2.8
1	B	277	ASN	2.7
1	B	46	SER	2.7
1	B	49	MET	2.7
1	A	152	ILE	2.7
1	B	26	THR	2.6
1	B	300	CYS	2.6
1	B	73	VAL	2.6
1	B	55	GLU	2.6
1	B	249	ILE	2.5
1	A	184	PRO	2.5
1	B	251	GLY	2.5
1	B	252	PRO	2.5
1	B	74	GLN	2.5
1	A	195	GLY	2.5
1	B	47	GLU	2.5
1	A	87	LEU	2.5
1	A	128[A]	CYS	2.4
1	B	44	CYS	2.4
1	B	260	ALA	2.4
1	B	256	GLN	2.4
1	B	45	THR	2.4
1	A	45	THR	2.4
1	B	254	SER	2.4
1	A	73	VAL	2.3
1	A	155	ASP	2.3
1	B	24	THR	2.2
1	B	75	LEU	2.2
1	B	250	LEU	2.2
1	A	153	ASP	2.2
1	B	227	LEU	2.1

*Continued on next page...*

*Continued from previous page...*

Mol	Chain	Res	Type	RSRZ
1	B	230	PHE	2.1
1	A	74	GLN	2.1
1	B	232	LEU	2.1
1	B	226	THR	2.1
1	A	223	PHE	2.1
1	B	196	THR	2.1
1	B	298	ARG	2.1
1	A	22	CYS	2.0
1	B	69	GLN	2.0

## 6.2 Non-standard residues in protein, DNA, RNA chains [i](#)

There are no non-standard protein/DNA/RNA residues in this entry.

## 6.3 Carbohydrates [i](#)

There are no oligosaccharides in this entry.

## 6.4 Ligands [i](#)

In the following table, the Atoms column lists the number of modelled atoms in the group and the number defined in the chemical component dictionary. The B-factors column lists the minimum, median, 95<sup>th</sup> percentile and maximum values of B factors of atoms in the group. The column labelled 'Q< 0.9' lists the number of atoms with occupancy less than 0.9.

Mol	Type	Chain	Res	Atoms	RSCC	RSR	B-factors(Å <sup>2</sup> )	Q<0.9
2	DMS	B	403	4/4	0.35	0.48	118,118,118,118	0
2	DMS	A	409	4/4	0.63	0.29	80,80,80,80	0
2	DMS	B	402	4/4	0.65	0.33	81,81,81,81	0
2	DMS	B	405	4/4	0.79	0.29	82,82,82,82	0
2	DMS	A	408	4/4	0.80	0.24	72,72,72,72	0
2	DMS	A	403	4/4	0.82	0.22	52,53,53,53	0
2	DMS	A	401	4/4	0.83	0.20	51,51,51,51	0
2	DMS	B	406	4/4	0.85	0.19	59,59,59,59	0
2	DMS	A	402	4/4	0.86	0.22	61,61,61,61	0
2	DMS	A	406	4/4	0.88	0.18	64,64,64,64	0
2	DMS	B	401	4/4	0.90	0.15	38,38,38,39	0
2	DMS	A	405	4/4	0.93	0.13	42,42,42,43	0
4	S7U	A	407	36/36	0.94	0.09	20,26,30,31	36
4	S7U	B	404	36/36	0.95	0.08	21,24,27,28	36

*Continued on next page...*

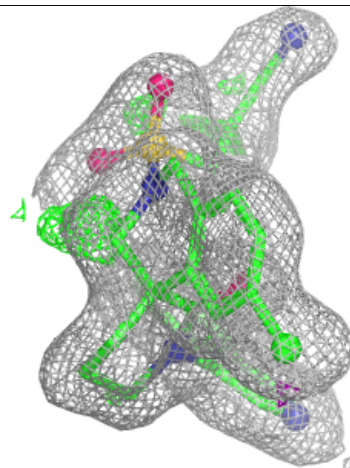
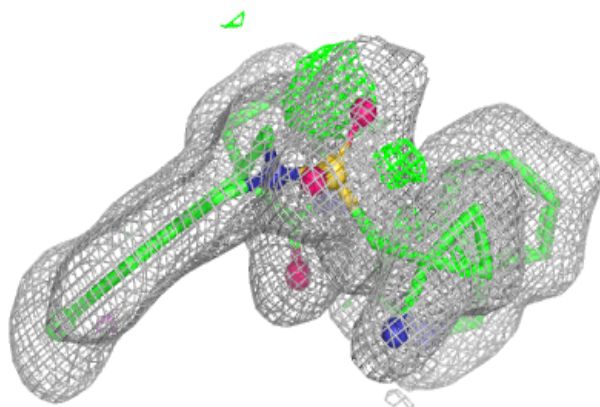
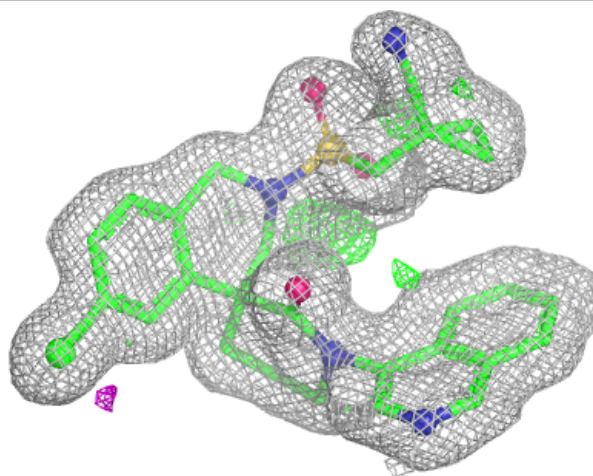
*Continued from previous page...*

Mol	Type	Chain	Res	Atoms	RSCC	RSR	B-factors( $\text{\AA}^2$ )	Q<0.9
3	CL	A	404	1/1	0.99	0.04	24,24,24,24	0

The following is a graphical depiction of the model fit to experimental electron density of all instances of the Ligand of Interest. In addition, ligands with molecular weight > 250 and outliers as shown on the geometry validation Tables will also be included. Each fit is shown from different orientation to approximate a three-dimensional view.

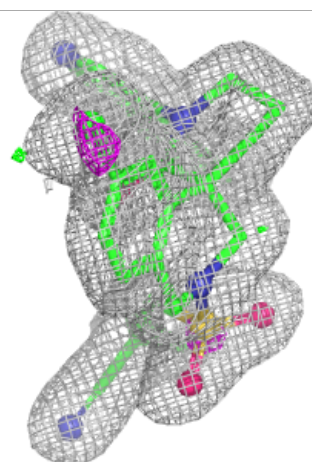
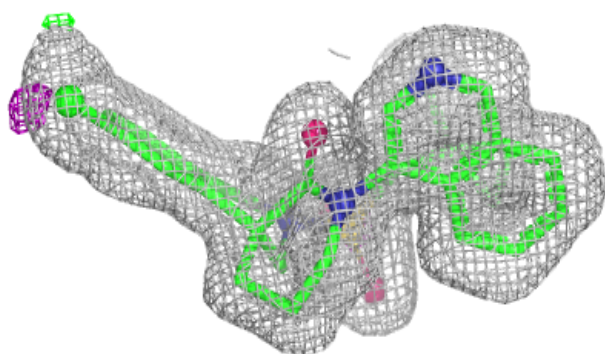
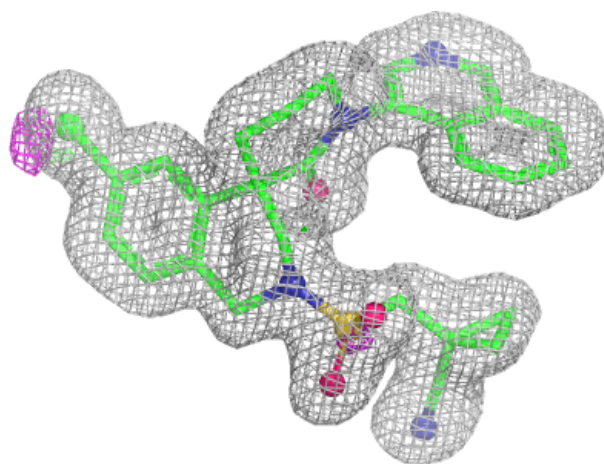
**Electron density around S7U A 407:**

2mF<sub>o</sub>-DF<sub>c</sub> (at 0.7 rmsd) in gray  
mF<sub>o</sub>-DF<sub>c</sub> (at 3 rmsd) in purple (negative)  
and green (positive)



**Electron density around S7U B 404:**

$2mF_o-DF_c$  (at 0.7 rmsd) in gray  
 $mF_o-DF_c$  (at 3 rmsd) in purple (negative)  
and green (positive)



## 6.5 Other polymers [i](#)

There are no such residues in this entry.