



Full wwPDB X-ray Structure Validation Report ⓘ

Mar 5, 2026 – 05:40 PM UTC

PDB ID : 6GNU / pdb_00006gnu
Title : Crystal Structure of Leishmania major N-Myristoyltransferase (NMT) With Bound Myristoyl-CoA and a Quionlinyl aryl sulphonamide ligand
Authors : Robinson, D.A.; Harrison, J.R.; Brand, S.; Smith, V.C.; Thompson, S.; Smith, A.; Davies, K.; Mok, N.Y.; Torrie, L.S.; Collie, I.; Hallyburton, I.; Norval, S.; Simeons, F.R.C.; Stojanovski, L.; Frearson, J.A.; Brenk, R.; Wyatt, P.G.; Gilbert, I.H.; Read, K.D.
Deposited on : 2018-05-31
Resolution : 1.54 Å(reported)

This is a Full wwPDB X-ray Structure Validation Report for a publicly released PDB entry.

We welcome your comments at validation@mail.wwpdb.org

A user guide is available at

<https://www.wwpdb.org/validation/2017/XrayValidationReportHelp>

with specific help available everywhere you see the ⓘ symbol.

The types of validation reports are described at

<http://www.wwpdb.org/validation/2017/FAQs#types>.

The following versions of software and data (see [references ⓘ](#)) were used in the production of this report:

MolProbity	:	4-5-2 with Phenix2.0
Mogul	:	2022.3.0, CSD as543be (2022)
Xtriage (Phenix)	:	2.0
EDS	:	3.0
Buster-report	:	wwPDB partial adaption of 1.1.7 (2018)
Percentile statistics	:	20250101.v01 (using entries in the PDB archive January 1st 2025)
CCP4	:	9.0.010 (Gargrove)
Density-Fitness	:	1.0.12
Ideal geometry (proteins)	:	Engh & Huber (2001)

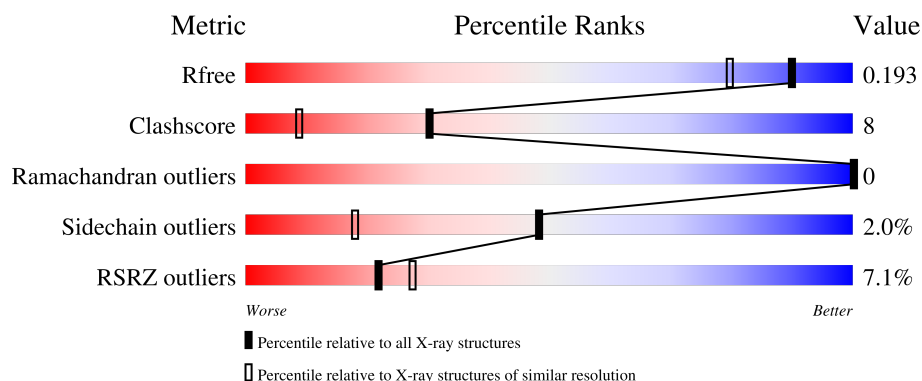
1 Overall quality at a glance

The following experimental techniques were used to determine the structure:

X-RAY DIFFRACTION

The reported resolution of this entry is 1.54 Å.

Percentile scores (ranging between 0-100) for global validation metrics of the entry are shown in the following graphic. The table shows the number of entries on which the scores are based.



Metric	Whole archive (#Entries)	Similar resolution (#Entries, resolution range(Å))
R_{free}	180053	1003 (1.54-1.54)
Clashscore	190562	1025 (1.54-1.54)
Ramachandran outliers	187476	1007 (1.54-1.54)
Sidechain outliers	187428	1007 (1.54-1.54)
RSRZ outliers	180081	1002 (1.54-1.54)

The table below summarises the geometric issues observed across the polymeric chains and their fit to the electron density. The red, orange, yellow and green segments of the lower bar indicate the fraction of residues that contain outliers for ≥ 3 , 2, 1 and 0 types of geometric quality criteria respectively. A grey segment represents the fraction of residues that are not modelled. The numeric value for each fraction is indicated below the corresponding segment, with a dot representing fractions $\leq 5\%$. The upper red bar (where present) indicates the fraction of residues that have poor fit to the electron density. The numeric value is given above the bar.

Mol	Chain	Length	Quality of chain
1	A	438	<div> <div>7%</div> <div>78%</div> <div>14%</div> <div>6%</div> </div>

Ideal geometry (DNA, RNA) : Parkinson et al. (1996)
Validation Pipeline (wwPDB-VP) : 2.49

2 Entry composition

There are 4 unique types of molecules in this entry. The entry contains 3710 atoms, of which 0 are hydrogens and 0 are deuteriums.

In the tables below, the ZeroOcc column contains the number of atoms modelled with zero occupancy, the AltConf column contains the number of residues with at least one atom in alternate conformation and the Trace column contains the number of residues modelled with at most 2 atoms.

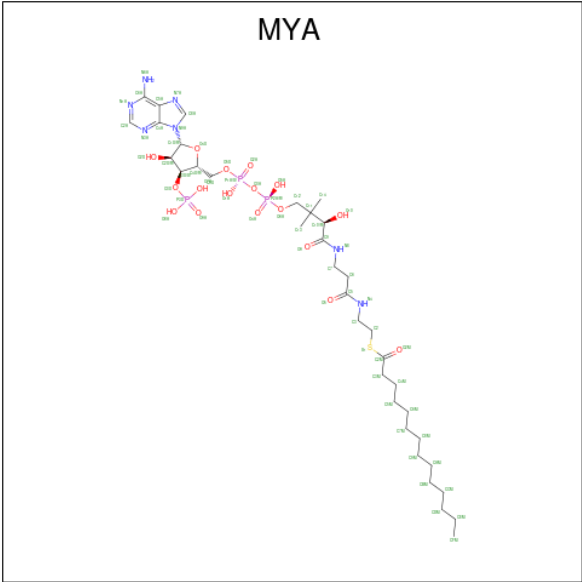
- Molecule 1 is a protein called Glycylpeptide N-tetradecanoyltransferase.

Mol	Chain	Residues	Atoms					ZeroOcc	AltConf	Trace
			Total	C	N	O	S			
1	A	411	3342	2161	562	604	15	0	1	0

There are 21 discrepancies between the modelled and reference sequences:

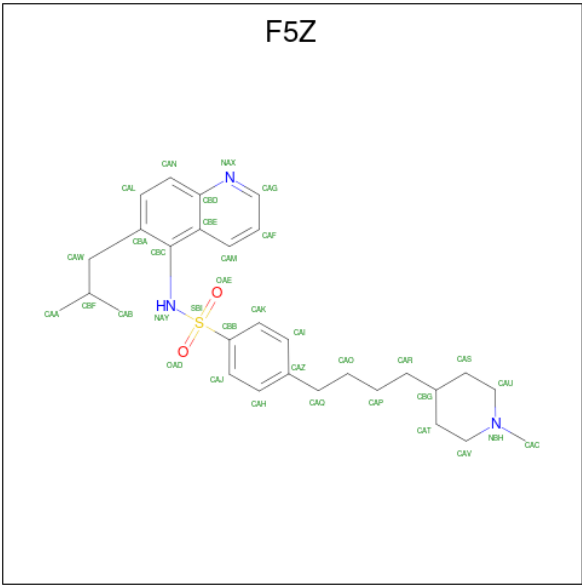
Chain	Residue	Modelled	Actual	Comment	Reference
A	-16	MET	-	initiating methionine	UNP Q4Q5S8
A	-15	GLY	-	expression tag	UNP Q4Q5S8
A	-14	SER	-	expression tag	UNP Q4Q5S8
A	-13	SER	-	expression tag	UNP Q4Q5S8
A	-12	HIS	-	expression tag	UNP Q4Q5S8
A	-11	HIS	-	expression tag	UNP Q4Q5S8
A	-10	HIS	-	expression tag	UNP Q4Q5S8
A	-9	HIS	-	expression tag	UNP Q4Q5S8
A	-8	HIS	-	expression tag	UNP Q4Q5S8
A	-7	HIS	-	expression tag	UNP Q4Q5S8
A	-6	SER	-	expression tag	UNP Q4Q5S8
A	-5	SER	-	expression tag	UNP Q4Q5S8
A	-4	GLY	-	expression tag	UNP Q4Q5S8
A	-3	ARG	-	expression tag	UNP Q4Q5S8
A	-2	GLU	-	expression tag	UNP Q4Q5S8
A	-1	ASN	-	expression tag	UNP Q4Q5S8
A	0	LEU	-	expression tag	UNP Q4Q5S8
A	1	TYR	-	expression tag	UNP Q4Q5S8
A	2	PHE	-	expression tag	UNP Q4Q5S8
A	3	GLN	-	expression tag	UNP Q4Q5S8
A	4	GLY	-	expression tag	UNP Q4Q5S8

- Molecule 2 is TETRADECANOYL-COA (CCD ID: MYA) (formula: $C_{35}H_{62}N_7O_{17}P_3S$).



Mol	Chain	Residues	Atoms					ZeroOcc	AltConf	
2	A	1	Total	C	N	O	P	S	0	0
			63	35	7	17	3	1		

- Molecule 3 is 4-[4-(1-methylpiperidin-4-yl)butyl]- {N}-[6-(2-methylpropyl)quinolin-5-yl]benzenesulfonamide (CCD ID: F5Z) (formula: C₂₉H₃₉N₃O₂S) (labeled as "Ligand of Interest" by depositor).



Mol	Chain	Residues	Atoms					ZeroOcc	AltConf
3	A	1	Total	C	N	O	S	0	0
			35	29	3	2	1		

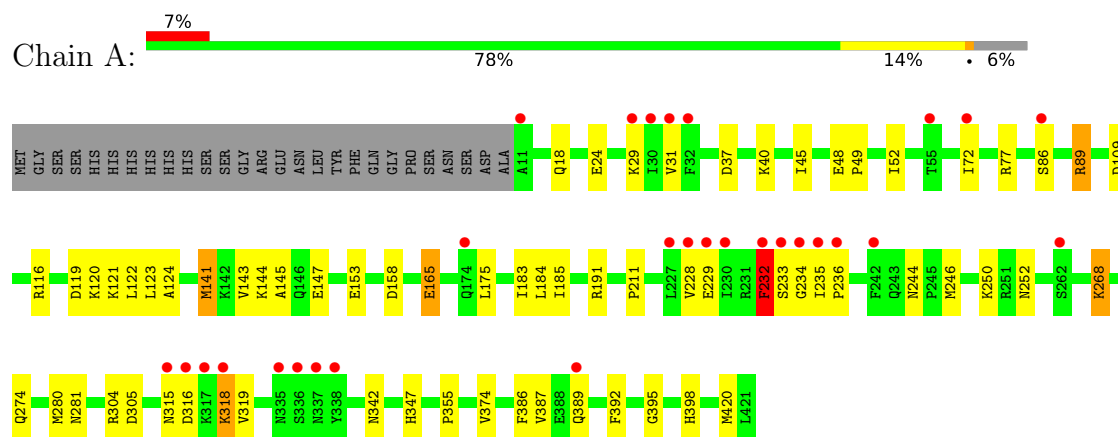
- Molecule 4 is water.

Mol	Chain	Residues	Atoms		ZeroOcc	AltConf
4	A	270	Total 270	O 270	0	0

3 Residue-property plots [i](#)

These plots are drawn for all protein, RNA, DNA and oligosaccharide chains in the entry. The first graphic for a chain summarises the proportions of the various outlier classes displayed in the second graphic. The second graphic shows the sequence view annotated by issues in geometry and electron density. Residues are color-coded according to the number of geometric quality criteria for which they contain at least one outlier: green = 0, yellow = 1, orange = 2 and red = 3 or more. A red dot above a residue indicates a poor fit to the electron density ($RSRZ > 2$). Stretches of 2 or more consecutive residues without any outlier are shown as a green connector. Residues present in the sample, but not in the model, are shown in grey.

- Molecule 1: Glycylpeptide N-tetradecanoyltransferase



4 Data and refinement statistics

Property	Value	Source
Space group	P 1 21 1	Depositor
Cell constants a, b, c, α , β , γ	48.31Å 89.93Å 52.88Å 90.00° 114.74° 90.00°	Depositor
Resolution (Å)	44.97 – 1.54 44.97 – 1.54	Depositor EDS
% Data completeness (in resolution range)	97.4 (44.97-1.54) 97.4 (44.97-1.54)	Depositor EDS
R_{merge}	0.04	Depositor
R_{sym}	(Not available)	Depositor
$\langle I/\sigma(I) \rangle$ ¹	2.61 (at 1.54Å)	Xtriage
Refinement program	REFMAC 5.8.0049	Depositor
R, R_{free}	0.157 , 0.185 0.166 , 0.193	Depositor DCC
R_{free} test set	2985 reflections (4.92%)	wwPDB-VP
Wilson B-factor (Å ²)	14.9	Xtriage
Anisotropy	0.031	Xtriage
Bulk solvent k_{sol} (e/Å ³), B_{sol} (Å ²)	0.39 , 36.0	EDS
L-test for twinning ²	$\langle L \rangle = 0.49$, $\langle L^2 \rangle = 0.32$	Xtriage
Estimated twinning fraction	0.027 for h,-k,-h-l	Xtriage
F_o, F_c correlation	0.96	EDS
Total number of atoms	3710	wwPDB-VP
Average B, all atoms (Å ²)	18.0	wwPDB-VP

Xtriage's analysis on translational NCS is as follows: *The largest off-origin peak in the Patterson function is 7.47% of the height of the origin peak. No significant pseudotranslation is detected.*

¹Intensities estimated from amplitudes.

²Theoretical values of $\langle |L| \rangle$, $\langle L^2 \rangle$ for acentric reflections are 0.5, 0.333 respectively for untwinned datasets, and 0.375, 0.2 for perfectly twinned datasets.

5 Model quality

5.1 Standard geometry

Bond lengths and bond angles in the following residue types are not validated in this section: F5Z, MYA

The Z score for a bond length (or angle) is the number of standard deviations the observed value is removed from the expected value. A bond length (or angle) with $|Z| > 5$ is considered an outlier worth inspection. RMSZ is the root-mean-square of all Z scores of the bond lengths (or angles).

Mol	Chain	Bond lengths		Bond angles	
		RMSZ	# $ Z > 5$	RMSZ	# $ Z > 5$
1	A	1.50	19/3444 (0.6%)	1.34	8/4689 (0.2%)

Chiral center outliers are detected by calculating the chiral volume of a chiral center and verifying if the center is modelled as a planar moiety or with the opposite hand. A planarity outlier is detected by checking planarity of atoms in a peptide group, atoms in a mainchain group or atoms of a sidechain that are expected to be planar.

Mol	Chain	#Chirality outliers	#Planarity outliers
1	A	0	1

All (19) bond length outliers are listed below:

Mol	Chain	Res	Type	Atoms	Z	Observed(Å)	Ideal(Å)
1	A	268	LYS	CA-CB	13.40	1.72	1.53
1	A	89	ARG	CD-NE	-6.92	1.36	1.46
1	A	18	GLN	C-O	6.74	1.30	1.24
1	A	387	VAL	CA-CB	-6.71	1.47	1.54
1	A	316	ASP	CA-C	-6.53	1.45	1.53
1	A	191	ARG	C-O	-6.24	1.16	1.24
1	A	395	GLY	C-O	-5.95	1.18	1.23
1	A	316	ASP	CB-CG	-5.91	1.37	1.52
1	A	49	PRO	CA-C	5.66	1.59	1.52
1	A	211	PRO	C-O	5.64	1.30	1.23
1	A	145	ALA	C-O	5.62	1.30	1.24
1	A	355	PRO	N-CA	-5.48	1.40	1.47
1	A	268	LYS	CD-CE	-5.47	1.36	1.52
1	A	392	PHE	C-O	5.45	1.30	1.23
1	A	386	PHE	CA-CB	-5.40	1.45	1.53
1	A	304	ARG	CA-C	-5.30	1.46	1.52
1	A	374	VAL	N-CA	5.26	1.52	1.46
1	A	141	MET	SD-CE	-5.19	1.66	1.79

Continued on next page...

Continued from previous page...

Mol	Chain	Res	Type	Atoms	Z	Observed(Å)	Ideal(Å)
1	A	185	ILE	C-O	-5.06	1.18	1.24

All (8) bond angle outliers are listed below:

Mol	Chain	Res	Type	Atoms	Z	Observed(°)	Ideal(°)
1	A	89	ARG	NE-CZ-NH1	18.50	140.00	121.50
1	A	89	ARG	NE-CZ-NH2	-17.51	103.44	119.20
1	A	89	ARG	CD-NE-CZ	12.09	141.33	124.40
1	A	268	LYS	CA-CB-CG	11.25	136.60	114.10
1	A	304	ARG	CG-CD-NE	-7.12	96.32	112.00
1	A	158	ASP	N-CA-C	5.69	118.42	111.82
1	A	232	PHE	N-CA-C	5.61	121.68	114.56
1	A	165	GLU	CB-CG-CD	-5.50	103.25	112.60

There are no chirality outliers.

All (1) planarity outliers are listed below:

Mol	Chain	Res	Type	Group
1	A	232	PHE	Peptide

5.2 Too-close contacts ⓘ

In the following table, the Non-H and H(model) columns list the number of non-hydrogen atoms and hydrogen atoms in the chain respectively. The H(added) column lists the number of hydrogen atoms added and optimized by MolProbity. The Clashes column lists the number of clashes within the asymmetric unit, whereas Symm-Clashes lists symmetry-related clashes.

Mol	Chain	Non-H	H(model)	H(added)	Clashes	Symm-Clashes
1	A	3342	0	3256	57	0
2	A	63	0	58	0	0
3	A	35	0	0	0	0
4	A	270	0	0	27	0
All	All	3710	0	3314	57	0

The all-atom clashscore is defined as the number of clashes found per 1000 atoms (including hydrogen atoms). The all-atom clashscore for this structure is 8.

All (57) close contacts within the same asymmetric unit are listed below, sorted by their clash magnitude.

Atom-1	Atom-2	Interatomic distance (Å)	Clash overlap (Å)
1:A:315:ASN:HB2	4:A:612:HOH:O	1.23	1.36
1:A:48:GLU:CD	4:A:602:HOH:O	1.85	1.18
1:A:24:GLU:HB3	4:A:607:HOH:O	1.51	1.11
1:A:141:MET:SD	4:A:852:HOH:O	2.07	1.10
1:A:147:GLU:HB3	4:A:613:HOH:O	0.85	1.02
1:A:109:ASP:HB2	4:A:732:HOH:O	1.61	0.98
1:A:342:ASN:CB	4:A:644:HOH:O	2.23	0.87
1:A:342:ASN:HB2	4:A:644:HOH:O	1.74	0.87
1:A:281:ASN:HB3	4:A:847:HOH:O	1.79	0.81
1:A:31:VAL:HB	1:A:141:MET:CE	2.18	0.73
1:A:229:GLU:O	1:A:233:SER:CB	2.38	0.71
1:A:144:LYS:HE2	4:A:630:HOH:O	1.91	0.69
1:A:274:GLN:NE2	1:A:318:LYS:HE2	2.11	0.66
1:A:165:GLU:HG2	1:A:420:MET:HE3	1.77	0.65
1:A:31:VAL:HA	1:A:141:MET:HE2	1.79	0.64
1:A:153:GLU:HG3	4:A:851:HOH:O	1.98	0.63
1:A:250:LYS:HE2	4:A:648:HOH:O	1.98	0.63
1:A:347:HIS:HE1	4:A:855:HOH:O	1.82	0.62
1:A:398:HIS:HD2	4:A:853:HOH:O	1.83	0.61
1:A:165:GLU:CG	1:A:420:MET:HE3	2.30	0.61
1:A:31:VAL:HB	1:A:141:MET:HE1	1.84	0.59
1:A:121:LYS:CD	4:A:606:HOH:O	2.50	0.59
1:A:121:LYS:HD2	4:A:606:HOH:O	2.03	0.58
1:A:72:ILE:HD13	1:A:122:LEU:HD21	1.86	0.56
1:A:77:ARG:O	1:A:89:ARG:HD2	2.06	0.56
1:A:342:ASN:CG	4:A:644:HOH:O	2.46	0.55
1:A:31:VAL:CA	1:A:141:MET:HE2	2.36	0.55
1:A:124:ALA:HB1	1:A:184:LEU:HD11	1.89	0.54
1:A:315:ASN:CB	4:A:612:HOH:O	2.07	0.53
1:A:31:VAL:HB	1:A:141:MET:HE2	1.92	0.52
1:A:252:ASN:HB2	4:A:689:HOH:O	2.08	0.52
1:A:274:GLN:HE22	1:A:319:VAL:H	1.56	0.52
1:A:31:VAL:HG22	4:A:803:HOH:O	2.09	0.51
1:A:232:PHE:HB2	1:A:234:GLY:O	2.10	0.50
1:A:274:GLN:NE2	1:A:319:VAL:H	2.10	0.50
1:A:244:ASN:HB2	4:A:621:HOH:O	2.12	0.49
1:A:40:LYS:HE2	1:A:45:ILE:CD1	2.43	0.49
1:A:121:LYS:CE	4:A:606:HOH:O	2.61	0.48
1:A:52:ILE:HG22	1:A:183:ILE:HG21	1.95	0.48
1:A:228:VAL:CG1	1:A:229:GLU:N	2.76	0.47
1:A:40:LYS:HE2	1:A:45:ILE:HD11	1.96	0.47
1:A:121:LYS:NZ	4:A:606:HOH:O	2.47	0.47

Continued on next page...

Continued from previous page...

Atom-1	Atom-2	Interatomic distance (Å)	Clash overlap (Å)
1:A:48:GLU:OE2	4:A:602:HOH:O	2.16	0.46
1:A:143:VAL:O	1:A:147:GLU:HG3	2.17	0.45
1:A:31:VAL:CB	1:A:141:MET:HE2	2.46	0.45
1:A:116:ARG:HD2	1:A:119:ASP:OD2	2.19	0.43
1:A:389:GLN:O	1:A:389:GLN:HG3	2.17	0.43
1:A:228:VAL:HG11	1:A:246:MET:HE1	2.01	0.42
1:A:280:MET:HA	1:A:280:MET:HE2	2.02	0.42
1:A:228:VAL:CG2	1:A:236:PRO:HD3	2.50	0.42
1:A:228:VAL:HG13	1:A:229:GLU:N	2.34	0.41
1:A:48:GLU:CG	4:A:602:HOH:O	2.47	0.41
1:A:144:LYS:CE	4:A:630:HOH:O	2.60	0.41
1:A:31:VAL:CB	1:A:141:MET:CE	2.96	0.41
1:A:123:LEU:HD13	1:A:175:LEU:HD21	2.03	0.41
1:A:48:GLU:HG2	4:A:602:HOH:O	2.19	0.41
1:A:235:ILE:HA	1:A:236:PRO:HD3	1.98	0.40

There are no symmetry-related clashes.

5.3 Torsion angles [i](#)

5.3.1 Protein backbone [i](#)

In the following table, the Percentiles column shows the percent Ramachandran outliers of the chain as a percentile score with respect to all X-ray entries followed by that with respect to entries of similar resolution.

The Analysed column shows the number of residues for which the backbone conformation was analysed, and the total number of residues.

Mol	Chain	Analysed	Favoured	Allowed	Outliers	Percentiles	
1	A	410/438 (94%)	399 (97%)	11 (3%)	0	100	100

There are no Ramachandran outliers to report.

5.3.2 Protein sidechains [i](#)

In the following table, the Percentiles column shows the percent sidechain outliers of the chain as a percentile score with respect to all X-ray entries followed by that with respect to entries of similar resolution.

The Analysed column shows the number of residues for which the sidechain conformation was

analysed, and the total number of residues.

Mol	Chain	Analysed	Rotameric	Outliers	Percentiles
1	A	357/385 (93%)	350 (98%)	7 (2%)	48 18

All (7) residues with a non-rotameric sidechain are listed below:

Mol	Chain	Res	Type
1	A	29	LYS
1	A	37	ASP
1	A	86	SER
1	A	120	LYS
1	A	268	LYS
1	A	305	ASP
1	A	318	LYS

Sometimes sidechains can be flipped to improve hydrogen bonding and reduce clashes. All (11) such sidechains are listed below:

Mol	Chain	Res	Type
1	A	18	GLN
1	A	70	HIS
1	A	91	ASN
1	A	162	HIS
1	A	174	GLN
1	A	274	GLN
1	A	315	ASN
1	A	339	ASN
1	A	347	HIS
1	A	389	GLN
1	A	398	HIS

5.3.3 RNA ⓘ

There are no RNA molecules in this entry.

5.4 Non-standard residues in protein, DNA, RNA chains ⓘ

There are no non-standard protein/DNA/RNA residues in this entry.

5.5 Carbohydrates [i](#)

There are no oligosaccharides in this entry.

5.6 Ligand geometry [i](#)

2 ligands are modelled in this entry.

In the following table, the Counts columns list the number of bonds (or angles) for which Mogul statistics could be retrieved, the number of bonds (or angles) that are observed in the model and the number of bonds (or angles) that are defined in the Chemical Component Dictionary. The Link column lists molecule types, if any, to which the group is linked. The Z score for a bond length (or angle) is the number of standard deviations the observed value is removed from the expected value. A bond length (or angle) with $|Z| > 2$ is considered an outlier worth inspection. RMSZ is the root-mean-square of all Z scores of the bond lengths (or angles).

Mol	Type	Chain	Res	Link	Bond lengths			Bond angles		
					Counts	RMSZ	# Z > 2	Counts	RMSZ	# Z > 2
2	MYA	A	501	-	63,65,65	1.43	10 (15%)	85,91,91	1.55	12 (14%)
3	F5Z	A	502	-	38,38,38	2.48	8 (21%)	49,53,53	2.24	16 (32%)

In the following table, the Chirals column lists the number of chiral outliers, the number of chiral centers analysed, the number of these observed in the model and the number defined in the Chemical Component Dictionary. Similar counts are reported in the Torsion and Rings columns. '-' means no outliers of that kind were identified.

Mol	Type	Chain	Res	Link	Chirals	Torsions	Rings
2	MYA	A	501	-	-	0/64/80/80	0/3/3/3
3	F5Z	A	502	-	-	5/22/32/32	0/4/4/4

All (18) bond length outliers are listed below:

Mol	Chain	Res	Type	Atoms	Z	Observed(Å)	Ideal(Å)
3	A	502	F5Z	OAD-SBI	8.10	1.52	1.43
3	A	502	F5Z	SBI-NAY	7.99	1.76	1.63
3	A	502	F5Z	OAE-SBI	6.79	1.51	1.43
2	A	501	MYA	P2A-O3A	4.79	1.64	1.59
2	A	501	MYA	P1A-O3A	3.87	1.63	1.59
3	A	502	F5Z	CBC-CBA	3.29	1.44	1.39
2	A	501	MYA	C8A-N7A	3.15	1.37	1.31
2	A	501	MYA	C3M-C2M	-3.04	1.47	1.50
2	A	501	MYA	P2A-O5A	-2.55	1.43	1.55
2	A	501	MYA	O2M-C2M	2.52	1.25	1.21
2	A	501	MYA	C14-C11	-2.31	1.49	1.53

Continued on next page...

Continued from previous page...

Mol	Chain	Res	Type	Atoms	Z	Observed(Å)	Ideal(Å)
3	A	502	F5Z	CAU-NBH	2.14	1.51	1.46
3	A	502	F5Z	CBB-SBI	-2.09	1.73	1.76
3	A	502	F5Z	CAN-CAL	2.06	1.41	1.36
2	A	501	MYA	C7-C6	2.02	1.58	1.51
2	A	501	MYA	C3-N4	2.02	1.50	1.46
3	A	502	F5Z	CAC-NBH	2.02	1.51	1.46
2	A	501	MYA	O5-C5	2.01	1.27	1.23

All (28) bond angle outliers are listed below:

Mol	Chain	Res	Type	Atoms	Z	Observed(°)	Ideal(°)
3	A	502	F5Z	OAE-SBI-CBB	5.93	115.46	107.98
3	A	502	F5Z	CAM-CBE-CBD	-5.21	112.56	118.36
2	A	501	MYA	C5A-C4A-N3A	-5.12	119.67	126.72
3	A	502	F5Z	CAF-CAM-CBE	4.75	127.33	120.91
3	A	502	F5Z	CAO-CAQ-CAZ	4.49	130.41	113.67
2	A	501	MYA	N3A-C2A-N1A	-4.22	122.20	128.58
3	A	502	F5Z	CAV-NBH-CAU	4.16	116.16	109.54
2	A	501	MYA	C5A-C4A-N9A	4.00	110.17	105.81
2	A	501	MYA	O3A-P2A-O4A	-3.81	99.24	110.70
3	A	502	F5Z	CAP-CAO-CAQ	-3.76	98.03	113.74
2	A	501	MYA	C4A-C5A-N7A	-3.75	106.30	110.58
3	A	502	F5Z	OAE-SBI-OAD	-3.69	115.03	119.52
3	A	502	F5Z	CAG-NAX-CBD	3.45	122.15	116.93
3	A	502	F5Z	CAR-CBG-CAS	-3.44	103.40	112.05
3	A	502	F5Z	CAT-CBG-CAS	-3.23	101.39	109.29
2	A	501	MYA	C3M-C2M-S1	2.97	116.94	113.40
2	A	501	MYA	O2M-C2M-C3M	-2.93	120.60	123.98
2	A	501	MYA	O1A-P1A-O3A	2.83	114.91	107.27
2	A	501	MYA	C2A-N3A-C4A	2.70	118.42	111.83
2	A	501	MYA	O2X-C2X-C3X	2.56	118.36	111.19
3	A	502	F5Z	CAF-CAG-NAX	-2.50	120.30	123.97
3	A	502	F5Z	CAW-CBA-CAL	-2.22	115.60	119.83
2	A	501	MYA	N9A-C8A-N7A	-2.22	110.79	113.94
3	A	502	F5Z	CAL-CAN-CBD	2.05	123.26	120.80
3	A	502	F5Z	CAM-CAF-CAG	-2.04	116.37	118.92
3	A	502	F5Z	OAE-SBI-NAY	-2.03	101.80	106.74
2	A	501	MYA	C13-C11-C10	2.01	112.19	108.77
3	A	502	F5Z	CAT-CAV-NBH	-2.00	108.61	111.20

There are no chirality outliers.

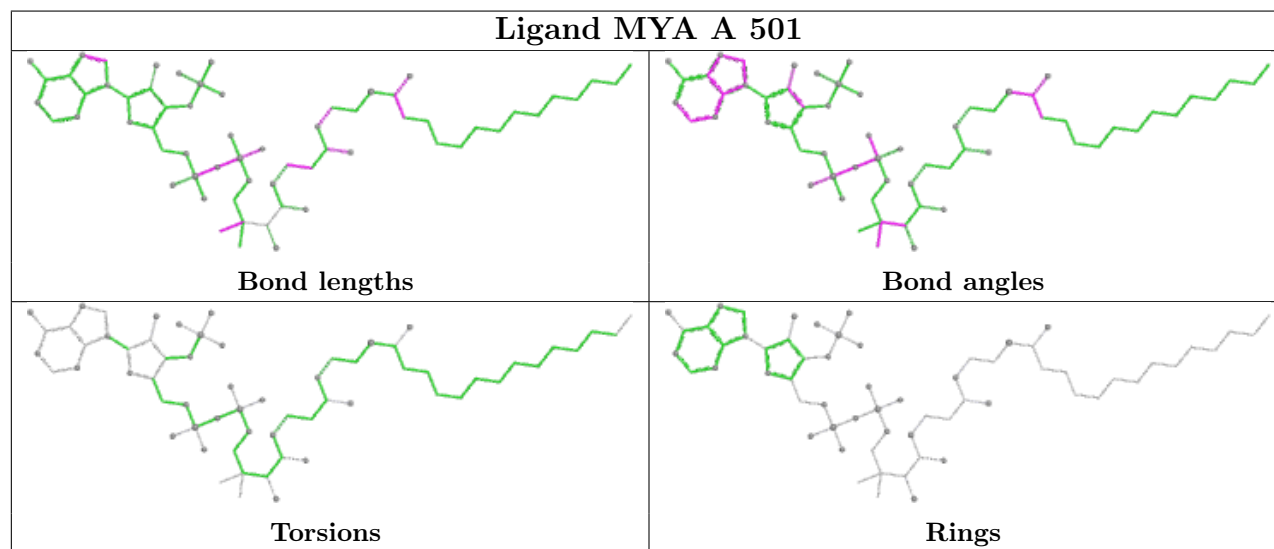
All (5) torsion outliers are listed below:

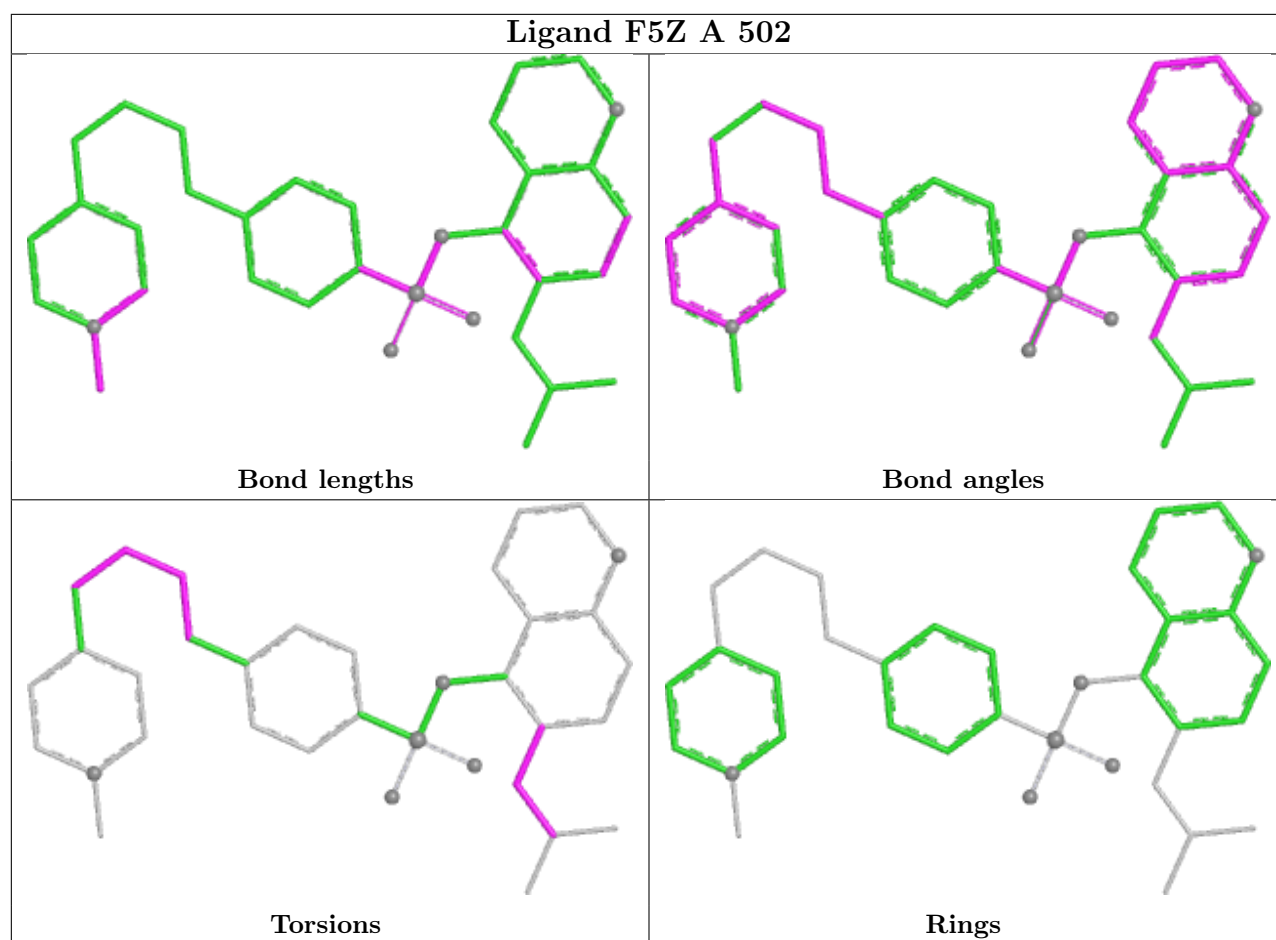
Mol	Chain	Res	Type	Atoms
3	A	502	F5Z	CAP-CAO-CAQ-CAZ
3	A	502	F5Z	CAQ-CAO-CAP-CAR
3	A	502	F5Z	CBF-CAW-CBA-CBC
3	A	502	F5Z	CBA-CAW-CBF-CAB
3	A	502	F5Z	CAO-CAP-CAR-CBG

There are no ring outliers.

No monomer is involved in short contacts.

The following is a two-dimensional graphical depiction of Mogul quality analysis of bond lengths, bond angles, torsion angles, and ring geometry for all instances of the Ligand of Interest. In addition, ligands with molecular weight > 250 and outliers as shown on the validation Tables will also be included. For torsion angles, if less than 5% of the Mogul distribution of torsion angles is within 10 degrees of the torsion angle in question, then that torsion angle is considered an outlier. Any bond that is central to one or more torsion angles identified as an outlier by Mogul will be highlighted in the graph. For rings, the root-mean-square deviation (RMSD) between the ring in question and similar rings identified by Mogul is calculated over all ring torsion angles. If the average RMSD is greater than 60 degrees and the minimal RMSD between the ring in question and any Mogul-identified rings is also greater than 60 degrees, then that ring is considered an outlier. The outliers are highlighted in purple. The color gray indicates Mogul did not find sufficient equivalents in the CSD to analyse the geometry.





5.7 Other polymers [i](#)

There are no such residues in this entry.

5.8 Polymer linkage issues [i](#)

There are no chain breaks in this entry.

6 Fit of model and data

6.1 Protein, DNA and RNA chains

In the following table, the column labelled ‘#RSRZ > 2’ contains the number (and percentage) of RSRZ outliers, followed by percent RSRZ outliers for the chain as percentile scores relative to all X-ray entries and entries of similar resolution. The OWAB column contains the minimum, median, 95th percentile and maximum values of the occupancy-weighted average B-factor per residue. The column labelled ‘Q < 0.9’ lists the number of (and percentage) of residues with an average occupancy less than 0.9.

Mol	Chain	Analysed	<RSRZ>	#RSRZ > 2		OWAB(Å ²)	Q < 0.9
1	A	411/438 (93%)	0.08	29 (7%)	22 27	7, 15, 35, 55	4 (0%)

All (29) RSRZ outliers are listed below:

Mol	Chain	Res	Type	RSRZ
1	A	232	PHE	6.8
1	A	228	VAL	5.4
1	A	233	SER	5.2
1	A	235	ILE	4.7
1	A	336	SER	4.5
1	A	234	GLY	4.3
1	A	230	ILE	3.3
1	A	11	ALA	3.3
1	A	86	SER	3.2
1	A	317	LYS	3.1
1	A	227	LEU	3.0
1	A	174	GLN	2.9
1	A	316	ASP	2.9
1	A	72	ILE	2.9
1	A	337	ASN	2.8
1	A	31	VAL	2.7
1	A	335	ASN	2.6
1	A	55	THR	2.6
1	A	242	PHE	2.5
1	A	318	LYS	2.4
1	A	29	LYS	2.3
1	A	262	SER	2.3
1	A	236	PRO	2.2
1	A	389	GLN	2.2
1	A	315	ASN	2.2
1	A	30	ILE	2.2
1	A	338	TYR	2.1

Continued on next page...

Continued from previous page...

Mol	Chain	Res	Type	RSRZ
1	A	229	GLU	2.1
1	A	32	PHE	2.0

6.2 Non-standard residues in protein, DNA, RNA chains [i](#)

There are no non-standard protein/DNA/RNA residues in this entry.

6.3 Carbohydrates [i](#)

There are no oligosaccharides in this entry.

6.4 Ligands [i](#)

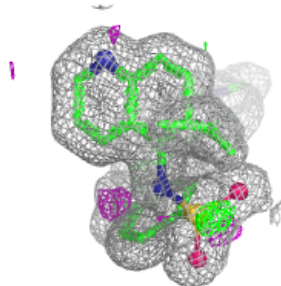
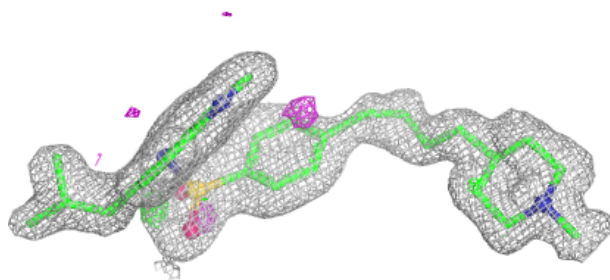
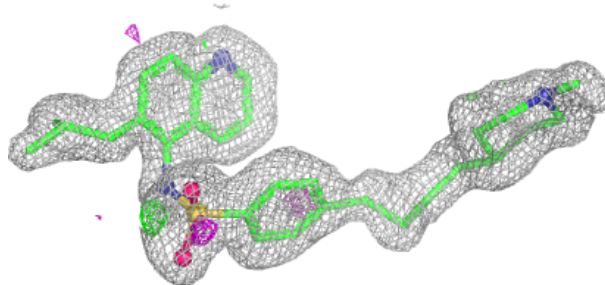
In the following table, the Atoms column lists the number of modelled atoms in the group and the number defined in the chemical component dictionary. The B-factors column lists the minimum, median, 95th percentile and maximum values of B factors of atoms in the group. The column labelled 'Q< 0.9' lists the number of atoms with occupancy less than 0.9.

Mol	Type	Chain	Res	Atoms	RSCC	RSR	B-factors(\AA^2)	Q<0.9
3	F5Z	A	502	35/35	0.93	0.09	15,23,27,33	0
2	MYA	A	501	63/63	0.99	0.04	9,12,16,18	0

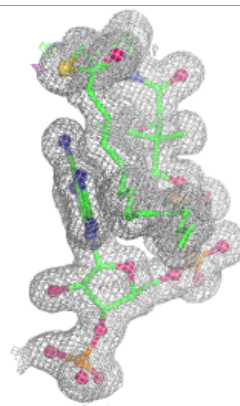
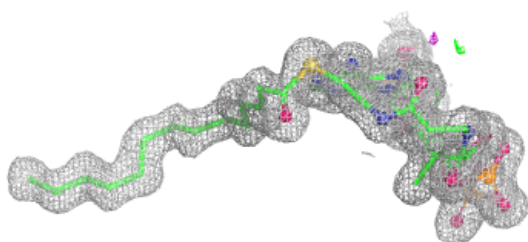
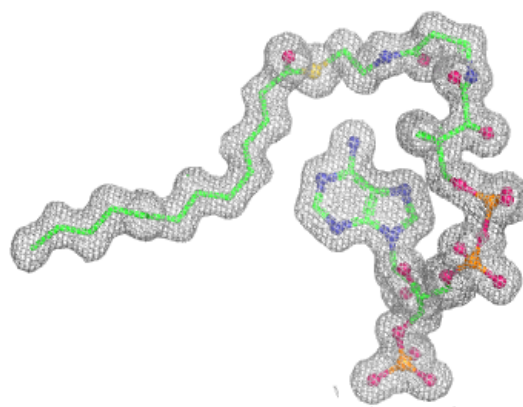
The following is a graphical depiction of the model fit to experimental electron density of all instances of the Ligand of Interest. In addition, ligands with molecular weight > 250 and outliers as shown on the geometry validation Tables will also be included. Each fit is shown from different orientation to approximate a three-dimensional view.

Electron density around F5Z A 502:

$2mF_o-DF_c$ (at 0.7 rmsd) in gray
 mF_o-DF_c (at 3 rmsd) in purple (negative)
and green (positive)

**Electron density around MYA A 501:**

$2mF_o-DF_c$ (at 0.7 rmsd) in gray
 mF_o-DF_c (at 3 rmsd) in purple (negative)
and green (positive)



6.5 Other polymers [i](#)

There are no such residues in this entry.