



Full wwPDB X-ray Structure Validation Report ⓘ

Apr 25, 2026 – 01:05 PM EDT

PDB ID : 6GIT / pdb_00006git
Title : PURPLE ACID PHYTASE FROM WHEAT ISOFORM B2 - PRODUCT COMPLEX
Authors : Faba-Rodriguez, R.; Brearley, C.A.; Hemmings, A.M.
Deposited on : 2018-05-15
Resolution : 1.42 Å(reported)

This is a Full wwPDB X-ray Structure Validation Report for a publicly released PDB entry.

We welcome your comments at validation@mail.wwpdb.org

A user guide is available at

<https://www.wwpdb.org/validation/2017/XrayValidationReportHelp>

with specific help available everywhere you see the ⓘ symbol.

The types of validation reports are described at

<http://www.wwpdb.org/validation/2017/FAQs#types>.

The following versions of software and data (see [references ⓘ](#)) were used in the production of this report:

MolProbity : 4-5-2 with Phenix2.0
Mogul : 2022.3.0, CSD as543be (2022)
Xtriage (Phenix) : 2.0
EDS : 3.0
Percentile statistics : 20250101.v01 (using entries in the PDB archive January 1st 2025)
CCP4 : 9.0.010 (Gargrove)
Density-Fitness : 1.0.12
Ideal geometry (proteins) : Engh & Huber (2001)
Ideal geometry (DNA, RNA) : Parkinson et al. (1996)
Validation Pipeline (wwPDB-VP) : 2.49

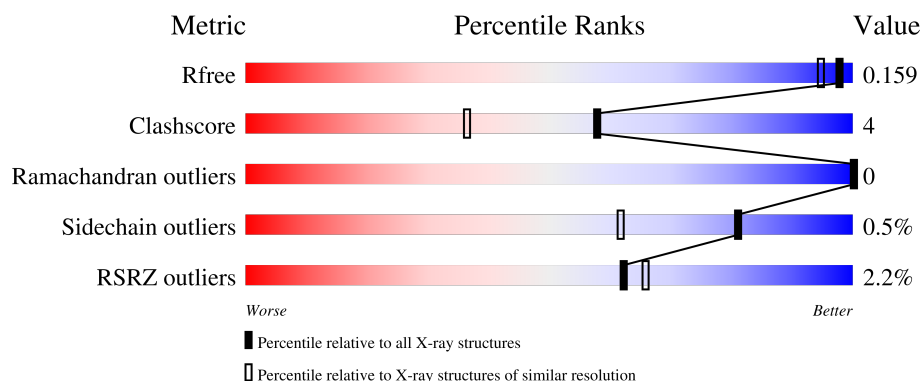
1 Overall quality at a glance

The following experimental techniques were used to determine the structure:

X-RAY DIFFRACTION

The reported resolution of this entry is 1.42 Å.

Percentile scores (ranging between 0-100) for global validation metrics of the entry are shown in the following graphic. The table shows the number of entries on which the scores are based.



Metric	Whole archive (#Entries)	Similar resolution (#Entries, resolution range(Å))
R_{free}	180053	4041 (1.44-1.40)
Clashscore	190562	4154 (1.44-1.40)
Ramachandran outliers	187476	4083 (1.44-1.40)
Sidechain outliers	187428	4082 (1.44-1.40)
RSRZ outliers	180081	4039 (1.44-1.40)

The table below summarises the geometric issues observed across the polymeric chains and their fit to the electron density. The red, orange, yellow and green segments of the lower bar indicate the fraction of residues that contain outliers for ≥ 3 , 2, 1 and 0 types of geometric quality criteria respectively. A grey segment represents the fraction of residues that are not modelled. The numeric value for each fraction is indicated below the corresponding segment, with a dot representing fractions $\leq 5\%$. The upper red bar (where present) indicates the fraction of residues that have poor fit to the electron density. The numeric value is given above the bar.

Mol	Chain	Length	Quality of chain
1	A	516	<div> <div>2%</div> <div>91%</div> <div>7%</div> </div>
2	B	2	<div> <div>100%</div> </div>

The following table lists non-polymeric compounds, carbohydrate monomers and non-standard residues in protein, DNA, RNA chains that are outliers for geometric or electron-density-fit criteria:

Mol	Type	Chain	Res	Chirality	Geometry	Clashes	Electron density
9	EDO	A	623	-	-	X	-

2 Entry composition [i](#)

There are 10 unique types of molecules in this entry. The entry contains 5093 atoms, of which 283 are hydrogens and 0 are deuteriums.

In the tables below, the ZeroOcc column contains the number of atoms modelled with zero occupancy, the AltConf column contains the number of residues with at least one atom in alternate conformation and the Trace column contains the number of residues modelled with at most 2 atoms.

- Molecule 1 is a protein called Purple acid phosphatase.

Mol	Chain	Residues	Atoms					ZeroOcc	AltConf	Trace
1	A	507	Total	C	N	O	S	0	24	0
			4078	2597	684	772	25			

There are 6 discrepancies between the modelled and reference sequences:

Chain	Residue	Modelled	Actual	Comment	Reference
A	511	HIS	-	expression tag	UNP C4PKL0
A	512	HIS	-	expression tag	UNP C4PKL0
A	513	HIS	-	expression tag	UNP C4PKL0
A	514	HIS	-	expression tag	UNP C4PKL0
A	515	HIS	-	expression tag	UNP C4PKL0
A	516	HIS	-	expression tag	UNP C4PKL0

- Molecule 2 is an oligosaccharide called 2-acetamido-2-deoxy-beta-D-glucopyranose-(1-4)-2-acetamido-2-deoxy-beta-D-glucopyranose.



Mol	Chain	Residues	Atoms					ZeroOcc	AltConf	Trace
2	B	2	Total	C	H	N	O	0	0	0
			55	16	27	2	10			

- Molecule 3 is FE (III) ION (CCD ID: FE) (formula: Fe).

Mol	Chain	Residues	Atoms		ZeroOcc	AltConf
3	A	2	Total	Fe	0	0
			2	2		

- Molecule 4 is 2-acetamido-2-deoxy-beta-D-glucopyranose (CCD ID: NAG) (formula: C₈H₁₅NO₆).



Mol	Chain	Residues	Atoms					ZeroOcc	AltConf
4	A	1	Total	C	H	N	O	0	0
			28	8	14	1	5		
4	A	1	Total	C	H	N	O	0	0
			28	8	14	1	5		
4	A	1	Total	C	H	N	O	0	0
			28	8	14	1	5		
4	A	1	Total	C	H	N	O	0	0
			28	8	14	1	5		
4	A	1	Total	C	H	N	O	0	0
			28	8	14	1	5		

- Molecule 5 is PHOSPHATE ION (CCD ID: PO4) (formula: O₄P).



Mol	Chain	Residues	Atoms			ZeroOcc	AltConf
5	A	1	Total	O	P	0	0
			5	4	1		
5	A	1	Total	O	P	0	0
			5	4	1		

- Molecule 6 is DI(HYDROXYETHYL)ETHER (CCD ID: PEG) (formula: $C_4H_{10}O_3$).



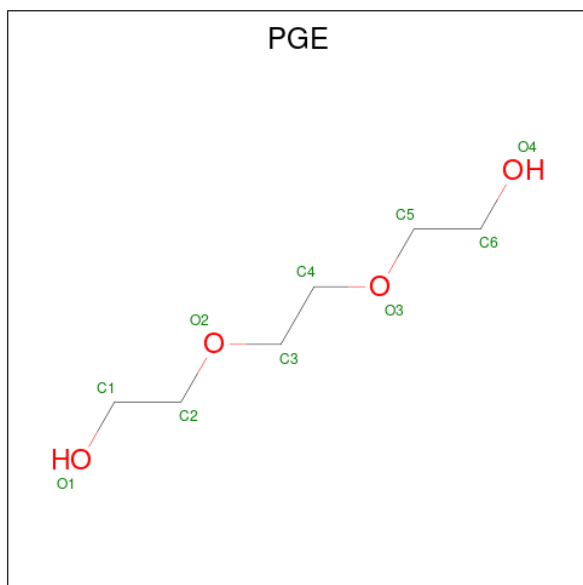
Mol	Chain	Residues	Atoms				ZeroOcc	AltConf
6	A	1	Total	C	H	O	0	0
			17	4	10	3		
6	A	1	Total	C	H	O	0	0
			17	4	10	3		

Continued on next page...

Continued from previous page...

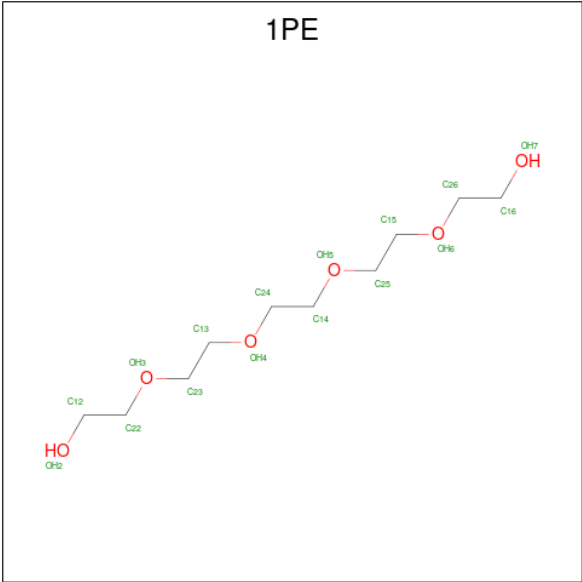
Mol	Chain	Residues	Atoms				ZeroOcc	AltConf
6	A	1	Total	C	H	O	0	0
			17	4	10	3		
6	A	1	Total	C	H	O	0	0
			17	4	10	3		
6	A	1	Total	C	H	O	0	0
			17	4	10	3		

- Molecule 7 is TRIETHYLENE GLYCOL (CCD ID: PGE) (formula: $C_6H_{14}O_4$).



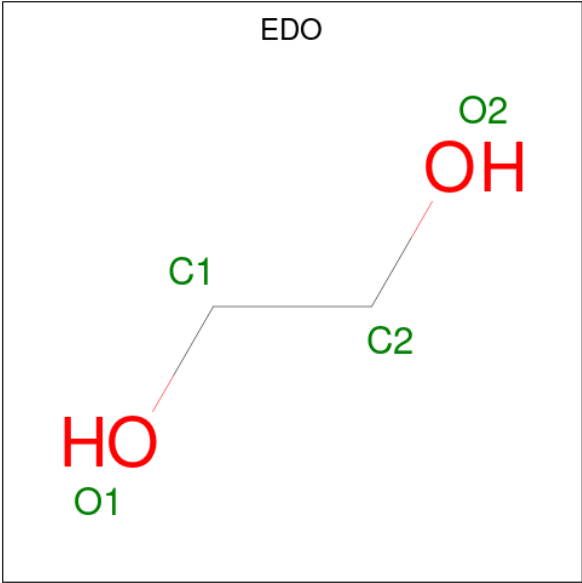
Mol	Chain	Residues	Atoms				ZeroOcc	AltConf
7	A	1	Total	C	H	O	0	0
			24	6	14	4		
7	A	1	Total	C	H	O	0	0
			24	6	14	4		

- Molecule 8 is PENTAETHYLENE GLYCOL (CCD ID: 1PE) (formula: $C_{10}H_{22}O_6$).



Mol	Chain	Residues	Atoms				ZeroOcc	AltConf
8	A	1	Total	C	H	O	0	0
			38	10	22	6		

- Molecule 9 is 1,2-ETHANEDIOL (CCD ID: EDO) (formula: C₂H₆O₂).



Mol	Chain	Residues	Atoms				ZeroOcc	AltConf
9	A	1	Total	C	H	O	0	0
			10	2	6	2		
9	A	1	Total	C	H	O	0	0
			10	2	6	2		
9	A	1	Total	C	H	O	0	0
			10	2	6	2		

Continued on next page...

Continued from previous page...

Mol	Chain	Residues	Atoms				ZeroOcc	AltConf
9	A	1	Total	C	H	O	0	0
			10	2	6	2		
9	A	1	Total	C	H	O	0	0
			10	2	6	2		
9	A	1	Total	C	H	O	0	0
			10	2	6	2		
9	A	1	Total	C	H	O	0	0
			10	2	6	2		
9	A	1	Total	C	H	O	0	0
			10	2	6	2		
9	A	1	Total	C	H	O	0	0
			10	2	6	2		
9	A	1	Total	C	H	O	0	0
			10	2	6	2		
9	A	1	Total	C	H	O	0	0
			10	2	6	2		

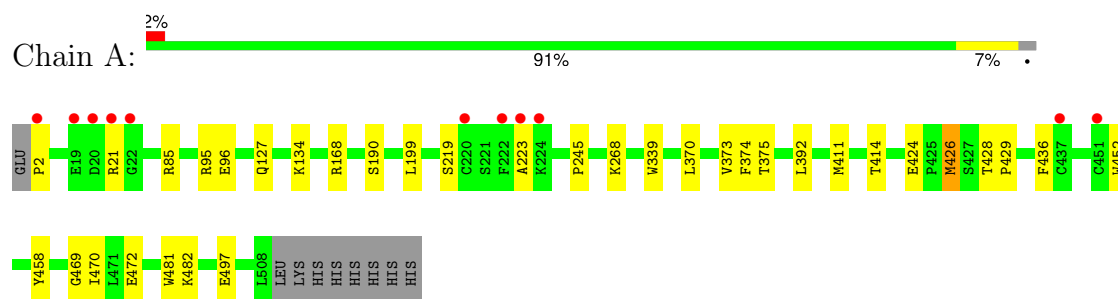
- Molecule 10 is water.

Mol	Chain	Residues	Atoms		ZeroOcc	AltConf
10	A	489	Total	O	0	0
			489	489		

3 Residue-property plots [i](#)

These plots are drawn for all protein, RNA, DNA and oligosaccharide chains in the entry. The first graphic for a chain summarises the proportions of the various outlier classes displayed in the second graphic. The second graphic shows the sequence view annotated by issues in geometry and electron density. Residues are color-coded according to the number of geometric quality criteria for which they contain at least one outlier: green = 0, yellow = 1, orange = 2 and red = 3 or more. A red dot above a residue indicates a poor fit to the electron density ($RSRZ > 2$). Stretches of 2 or more consecutive residues without any outlier are shown as a green connector. Residues present in the sample, but not in the model, are shown in grey.

- Molecule 1: Purple acid phosphatase



- Molecule 2: 2-acetamido-2-deoxy-beta-D-glucopyranose-(1-4)-2-acetamido-2-deoxy-beta-D-glucopyranose



4 Data and refinement statistics

Property	Value	Source
Space group	H 3	Depositor
Cell constants a, b, c, α , β , γ	126.48Å 126.48Å 106.80Å 90.00° 90.00° 120.00°	Depositor
Resolution (Å)	63.24 – 1.42 63.24 – 1.42	Depositor EDS
% Data completeness (in resolution range)	92.6 (63.24-1.42) 92.6 (63.24-1.42)	Depositor EDS
R_{merge}	0.05	Depositor
R_{sym}	(Not available)	Depositor
$\langle I/\sigma(I) \rangle$ ¹	2.11 (at 1.42Å)	Xtriage
Refinement program	PHENIX (1.11.1_2575: ???)	Depositor
R, R_{free}	0.132 , 0.158 0.133 , 0.159	Depositor DCC
R_{free} test set	5746 reflections (4.76%)	wwPDB-VP
Wilson B-factor (Å ²)	14.5	Xtriage
Anisotropy	0.135	Xtriage
Bulk solvent k_{sol} (e/Å ³), B_{sol} (Å ²)	0.37 , 40.6	EDS
L-test for twinning ²	$\langle L \rangle = 0.49$, $\langle L^2 \rangle = 0.33$	Xtriage
Estimated twinning fraction	0.018 for h,-h-k,-l	Xtriage
F_o, F_c correlation	0.98	EDS
Total number of atoms	5093	wwPDB-VP
Average B, all atoms (Å ²)	23.0	wwPDB-VP

Xtriage's analysis on translational NCS is as follows: *The largest off-origin peak in the Patterson function is 3.87% of the height of the origin peak. No significant pseudotranslation is detected.*

¹Intensities estimated from amplitudes.

²Theoretical values of $\langle |L| \rangle$, $\langle L^2 \rangle$ for acentric reflections are 0.5, 0.333 respectively for untwinned datasets, and 0.375, 0.2 for perfectly twinned datasets.

5 Model quality

5.1 Standard geometry

Bond lengths and bond angles in the following residue types are not validated in this section: 1PE, PEG, PGE, FE, EDO, PO4, NAG

The Z score for a bond length (or angle) is the number of standard deviations the observed value is removed from the expected value. A bond length (or angle) with $|Z| > 5$ is considered an outlier worth inspection. RMSZ is the root-mean-square of all Z scores of the bond lengths (or angles).

Mol	Chain	Bond lengths		Bond angles	
		RMSZ	$\# Z > 5$	RMSZ	$\# Z > 5$
1	A	0.23	0/4282	0.45	0/5836

There are no bond length outliers.

There are no bond angle outliers.

There are no chirality outliers.

There are no planarity outliers.

5.2 Too-close contacts

In the following table, the Non-H and H(model) columns list the number of non-hydrogen atoms and hydrogen atoms in the chain respectively. The H(added) column lists the number of hydrogen atoms added and optimized by MolProbity. The Clashes column lists the number of clashes within the asymmetric unit, whereas Symm-Clashes lists symmetry-related clashes.

Mol	Chain	Non-H	H(model)	H(added)	Clashes	Symm-Clashes
1	A	4078	0	3879	37	0
2	B	28	27	25	0	0
3	A	2	0	0	1	0
4	A	84	84	78	0	0
5	A	10	0	0	2	0
6	A	35	50	50	3	0
7	A	20	28	28	1	0
8	A	16	22	22	0	0
9	A	48	72	72	12	0
10	A	489	0	0	5	0
All	All	4810	283	4154	38	0

The all-atom clashscore is defined as the number of clashes found per 1000 atoms (including hydrogen atoms). The all-atom clashscore for this structure is 4.

All (38) close contacts within the same asymmetric unit are listed below, sorted by their clash magnitude.

Atom-1	Atom-2	Interatomic distance (Å)	Clash overlap (Å)
1:A:190[B]:SER:OG	10:A:701:HOH:O	2.09	0.70
1:A:134:LYS:NZ	7:A:619:PGE:O4	2.15	0.70
1:A:219:SER:HA	1:A:223:ALA:HB2	1.75	0.67
1:A:2:PRO:HG3	1:A:497[A]:GLU:OE2	1.96	0.65
3:A:601:FE:FE	5:A:611:PO4:O1	1.49	0.65
1:A:85:ARG:NH1	10:A:702:HOH:O	2.21	0.65
1:A:470:ILE:HG13	9:A:623:EDO:H12	1.78	0.64
1:A:21:ARG:HE	9:A:624:EDO:C2	2.10	0.64
1:A:21:ARG:HE	9:A:624:EDO:H22	1.61	0.64
1:A:469:GLY:HA3	1:A:481:TRP:CH2	2.40	0.57
1:A:95:ARG:HE	9:A:621:EDO:H22	1.69	0.56
1:A:245:PRO:HB2	6:A:614:PEG:H12	1.88	0.56
1:A:2:PRO:HB3	1:A:497[A]:GLU:HG3	1.88	0.55
1:A:127[A]:GLN:NE2	10:A:714:HOH:O	2.39	0.55
1:A:472:GLU:OE1	9:A:623:EDO:O2	2.26	0.53
1:A:96:GLU:O	9:A:631:EDO:H22	2.08	0.53
1:A:168[A]:ARG:HH12	9:A:627:EDO:C1	2.21	0.53
1:A:127[A]:GLN:HG2	10:A:709:HOH:O	2.09	0.52
1:A:482:LYS:HE3	9:A:623:EDO:O1	2.09	0.52
1:A:168[A]:ARG:HH12	9:A:627:EDO:H12	1.75	0.51
1:A:452:TRP:HA	6:A:617:PEG:H21	1.92	0.50
1:A:199:LEU:HD11	1:A:374:PHE:HB3	1.94	0.50
1:A:452:TRP:HA	6:A:617:PEG:H41	1.93	0.49
1:A:428:THR:N	1:A:429:PRO:CD	2.77	0.48
1:A:428:THR:N	1:A:429:PRO:HD2	2.29	0.48
1:A:482:LYS:HE3	9:A:623:EDO:HO1	1.80	0.47
1:A:370:LEU:HD21	1:A:373:VAL:HG22	1.99	0.45
1:A:268[B]:LYS:HE2	1:A:268[B]:LYS:HB3	1.75	0.43
1:A:482:LYS:HG2	1:A:497[B]:GLU:HG3	2.00	0.43
1:A:2:PRO:HG3	1:A:497[A]:GLU:CD	2.43	0.42
1:A:21:ARG:HE	9:A:624:EDO:H21	1.82	0.42
1:A:339:TRP:O	1:A:375:THR:HA	2.20	0.42
1:A:392:LEU:HD21	1:A:458:TYR:HA	2.02	0.42
1:A:411[B]:MET:HE2	1:A:411[B]:MET:HB3	1.97	0.41
1:A:96:GLU:O	9:A:631:EDO:C2	2.69	0.41
1:A:127[A]:GLN:NE2	10:A:725:HOH:O	2.50	0.41
1:A:414[B]:THR:OG1	5:A:612:PO4:O4	2.30	0.41
1:A:426:MET:HE1	1:A:436:PHE:CZ	2.56	0.41

There are no symmetry-related clashes.

5.3 Torsion angles [i](#)

5.3.1 Protein backbone [i](#)

In the following table, the Percentiles column shows the percent Ramachandran outliers of the chain as a percentile score with respect to all X-ray entries followed by that with respect to entries of similar resolution.

The Analysed column shows the number of residues for which the backbone conformation was analysed, and the total number of residues.

Mol	Chain	Analysed	Favoured	Allowed	Outliers	Percentiles	
1	A	531/516 (103%)	516 (97%)	15 (3%)	0	100	100

There are no Ramachandran outliers to report.

5.3.2 Protein sidechains [i](#)

In the following table, the Percentiles column shows the percent sidechain outliers of the chain as a percentile score with respect to all X-ray entries followed by that with respect to entries of similar resolution.

The Analysed column shows the number of residues for which the sidechain conformation was analysed, and the total number of residues.

Mol	Chain	Analysed	Rotameric	Outliers	Percentiles	
1	A	439/425 (103%)	437 (100%)	2 (0%)	81	62

All (2) residues with a non-rotameric sidechain are listed below:

Mol	Chain	Res	Type
1	A	424	GLU
1	A	426	MET

Sometimes sidechains can be flipped to improve hydrogen bonding and reduce clashes. There are no such sidechains identified.

5.3.3 RNA [i](#)

There are no RNA molecules in this entry.

5.4 Non-standard residues in protein, DNA, RNA chains ⓘ

There are no non-standard protein/DNA/RNA residues in this entry.

5.5 Carbohydrates ⓘ

2 monosaccharides are modelled in this entry.

In the following table, the Counts columns list the number of bonds (or angles) for which Mogul statistics could be retrieved, the number of bonds (or angles) that are observed in the model and the number of bonds (or angles) that are defined in the Chemical Component Dictionary. The Link column lists molecule types, if any, to which the group is linked. The Z score for a bond length (or angle) is the number of standard deviations the observed value is removed from the expected value. A bond length (or angle) with $|Z| > 2$ is considered an outlier worth inspection. RMSZ is the root-mean-square of all Z scores of the bond lengths (or angles).

Mol	Type	Chain	Res	Link	Bond lengths			Bond angles		
					Counts	RMSZ	$\# Z > 2$	Counts	RMSZ	$\# Z > 2$
2	NAG	B	1	2,1	14,14,15	1.91	3 (21%)	17,19,21	1.16	1 (5%)
2	NAG	B	2	2	14,14,15	2.00	4 (28%)	17,19,21	1.26	2 (11%)

In the following table, the Chirals column lists the number of chiral outliers, the number of chiral centers analysed, the number of these observed in the model and the number defined in the Chemical Component Dictionary. Similar counts are reported in the Torsion and Rings columns. '-' means no outliers of that kind were identified.

Mol	Type	Chain	Res	Link	Chirals	Torsions	Rings
2	NAG	B	1	2,1	-	2/6/23/26	0/1/1/1
2	NAG	B	2	2	-	0/6/23/26	0/1/1/1

All (7) bond length outliers are listed below:

Mol	Chain	Res	Type	Atoms	Z	Observed(Å)	Ideal(Å)
2	B	2	NAG	O5-C1	4.26	1.50	1.43
2	B	1	NAG	O5-C1	4.08	1.50	1.43
2	B	2	NAG	C7-N2	3.92	1.47	1.34
2	B	1	NAG	C7-N2	3.84	1.46	1.34
2	B	2	NAG	C2-N2	2.52	1.50	1.46
2	B	1	NAG	C2-N2	2.51	1.50	1.46
2	B	2	NAG	O5-C5	2.18	1.47	1.43

All (3) bond angle outliers are listed below:

Mol	Chain	Res	Type	Atoms	Z	Observed(°)	Ideal(°)
2	B	2	NAG	C8-C7-N2	2.90	120.93	116.12
2	B	1	NAG	C8-C7-N2	2.55	120.35	116.12
2	B	2	NAG	C2-N2-C7	-2.54	119.50	122.90

There are no chirality outliers.

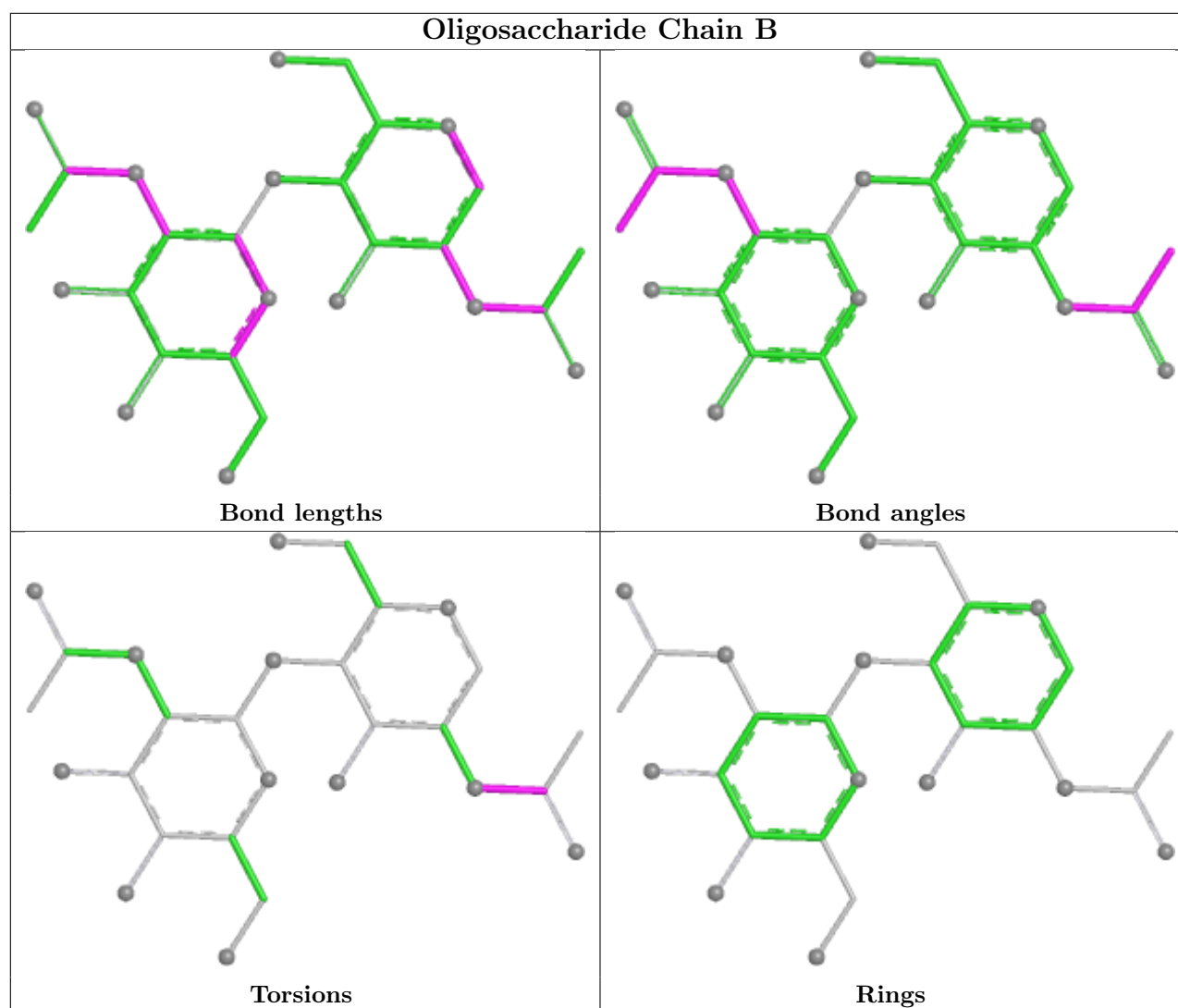
All (2) torsion outliers are listed below:

Mol	Chain	Res	Type	Atoms
2	B	1	NAG	C8-C7-N2-C2
2	B	1	NAG	O7-C7-N2-C2

There are no ring outliers.

No monomer is involved in short contacts.

The following is a two-dimensional graphical depiction of Mogul quality analysis of bond lengths, bond angles, torsion angles, and ring geometry for oligosaccharide.



5.6 Ligand geometry [i](#)

Of 30 ligands modelled in this entry, 2 are monoatomic - leaving 28 for Mogul analysis.

In the following table, the Counts columns list the number of bonds (or angles) for which Mogul statistics could be retrieved, the number of bonds (or angles) that are observed in the model and the number of bonds (or angles) that are defined in the Chemical Component Dictionary. The Link column lists molecule types, if any, to which the group is linked. The Z score for a bond length (or angle) is the number of standard deviations the observed value is removed from the expected value. A bond length (or angle) with $|Z| > 2$ is considered an outlier worth inspection. RMSZ is the root-mean-square of all Z scores of the bond lengths (or angles).

Mol	Type	Chain	Res	Link	Bond lengths			Bond angles		
					Counts	RMSZ	$\# Z > 2$	Counts	RMSZ	$\# Z > 2$
6	PEG	A	613	-	6,6,6	0.49	0	5,5,5	0.28	0
4	NAG	A	603	1	14,14,15	1.77	3 (21%)	17,19,21	1.04	2 (11%)
9	EDO	A	629	-	3,3,3	0.43	0	2,2,2	0.37	0

Mol	Type	Chain	Res	Link	Bond lengths			Bond angles		
					Counts	RMSZ	# Z > 2	Counts	RMSZ	# Z > 2
9	EDO	A	625	-	3,3,3	0.45	0	2,2,2	0.33	0
6	PEG	A	615	-	6,6,6	0.51	0	5,5,5	0.20	0
5	PO4	A	611	3	4,4,4	0.91	0	6,6,6	0.47	0
9	EDO	A	630	-	3,3,3	0.44	0	2,2,2	0.34	0
9	EDO	A	627	-	3,3,3	0.44	0	2,2,2	0.35	0
9	EDO	A	624	-	3,3,3	0.42	0	2,2,2	0.32	0
9	EDO	A	623	-	3,3,3	0.47	0	2,2,2	0.40	0
9	EDO	A	622	-	3,3,3	0.44	0	2,2,2	0.38	0
6	PEG	A	614	-	6,6,6	0.48	0	5,5,5	0.87	0
4	NAG	A	604	1	14,14,15	1.57	2 (14%)	17,19,21	0.95	1 (5%)
7	PGE	A	619	-	9,9,9	0.52	0	8,8,8	0.23	0
4	NAG	A	605	1	14,14,15	2.00	4 (28%)	17,19,21	1.23	2 (11%)
7	PGE	A	618	-	9,9,9	0.53	0	8,8,8	0.34	0
9	EDO	A	631	-	3,3,3	0.43	0	2,2,2	0.26	0
9	EDO	A	621	-	3,3,3	0.44	0	2,2,2	0.43	0
8	1PE	A	620	-	15,15,15	0.54	0	14,14,14	0.39	0
6	PEG	A	617	-	6,6,6	0.51	0	5,5,5	0.55	0
4	NAG	A	607	1	14,14,15	1.94	4 (28%)	17,19,21	1.06	2 (11%)
9	EDO	A	626	-	3,3,3	0.41	0	2,2,2	0.31	0
9	EDO	A	632	-	3,3,3	0.39	0	2,2,2	0.19	0
4	NAG	A	608	1	14,14,15	1.81	3 (21%)	17,19,21	1.14	2 (11%)
6	PEG	A	616	-	6,6,6	0.49	0	5,5,5	0.32	0
4	NAG	A	606	1	14,14,15	1.99	5 (35%)	17,19,21	1.70	4 (23%)
9	EDO	A	628	-	3,3,3	0.43	0	2,2,2	0.31	0
5	PO4	A	612	-	4,4,4	0.98	0	6,6,6	0.53	0

In the following table, the Chirals column lists the number of chiral outliers, the number of chiral centers analysed, the number of these observed in the model and the number defined in the Chemical Component Dictionary. Similar counts are reported in the Torsion and Rings columns. '-' means no outliers of that kind were identified.

Mol	Type	Chain	Res	Link	Chirals	Torsions	Rings
6	PEG	A	613	-	-	0/4/4/4	-
4	NAG	A	603	1	-	0/6/23/26	0/1/1/1
9	EDO	A	629	-	-	0/1/1/1	-
9	EDO	A	625	-	-	0/1/1/1	-
6	PEG	A	615	-	-	0/4/4/4	-
9	EDO	A	630	-	-	0/1/1/1	-
9	EDO	A	627	-	-	1/1/1/1	-
9	EDO	A	624	-	-	1/1/1/1	-
9	EDO	A	623	-	-	1/1/1/1	-

Continued on next page...

Continued from previous page...

Mol	Type	Chain	Res	Link	Chirals	Torsions	Rings
9	EDO	A	622	-	-	1/1/1/1	-
6	PEG	A	614	-	-	3/4/4/4	-
4	NAG	A	604	1	-	0/6/23/26	0/1/1/1
7	PGE	A	619	-	-	0/7/7/7	-
4	NAG	A	605	1	-	1/6/23/26	0/1/1/1
7	PGE	A	618	-	-	1/7/7/7	-
9	EDO	A	631	-	-	1/1/1/1	-
9	EDO	A	621	-	-	0/1/1/1	-
8	1PE	A	620	-	-	1/13/13/13	-
6	PEG	A	617	-	-	1/4/4/4	-
4	NAG	A	607	1	-	0/6/23/26	0/1/1/1
9	EDO	A	626	-	-	0/1/1/1	-
9	EDO	A	632	-	-	1/1/1/1	-
4	NAG	A	608	1	-	0/6/23/26	0/1/1/1
6	PEG	A	616	-	-	1/4/4/4	-
4	NAG	A	606	1	-	0/6/23/26	0/1/1/1
9	EDO	A	628	-	-	0/1/1/1	-

All (21) bond length outliers are listed below:

Mol	Chain	Res	Type	Atoms	Z	Observed(Å)	Ideal(Å)
4	A	605	NAG	O5-C1	4.46	1.51	1.43
4	A	606	NAG	O5-C1	4.18	1.50	1.43
4	A	607	NAG	O5-C1	4.17	1.50	1.43
4	A	606	NAG	C7-N2	3.74	1.46	1.34
4	A	603	NAG	O5-C1	3.71	1.49	1.43
4	A	603	NAG	C7-N2	3.70	1.46	1.34
4	A	607	NAG	C7-N2	3.70	1.46	1.34
4	A	605	NAG	C7-N2	3.69	1.46	1.34
4	A	608	NAG	O5-C1	3.68	1.49	1.43
4	A	608	NAG	C7-N2	3.68	1.46	1.34
4	A	604	NAG	O5-C1	3.40	1.49	1.43
4	A	604	NAG	C7-N2	3.20	1.44	1.34
4	A	606	NAG	O5-C5	2.45	1.48	1.43
4	A	605	NAG	O5-C5	2.36	1.48	1.43
4	A	607	NAG	C2-N2	2.34	1.50	1.46
4	A	605	NAG	C2-N2	2.27	1.50	1.46
4	A	606	NAG	C2-N2	2.24	1.50	1.46
4	A	603	NAG	C2-N2	2.20	1.49	1.46
4	A	608	NAG	C2-N2	2.19	1.49	1.46
4	A	606	NAG	C3-C2	-2.10	1.48	1.52
4	A	607	NAG	O5-C5	2.01	1.47	1.43

All (13) bond angle outliers are listed below:

Mol	Chain	Res	Type	Atoms	Z	Observed(°)	Ideal(°)
4	A	606	NAG	C1-C2-N2	-4.16	103.89	110.43
4	A	606	NAG	O5-C1-C2	3.55	116.79	111.29
4	A	608	NAG	C2-N2-C7	-3.06	118.81	122.90
4	A	605	NAG	C2-N2-C7	-2.70	119.28	122.90
4	A	605	NAG	C8-C7-N2	2.57	120.37	116.12
4	A	608	NAG	C8-C7-N2	2.47	120.21	116.12
4	A	606	NAG	C8-C7-N2	2.35	120.01	116.12
4	A	607	NAG	C2-N2-C7	-2.32	119.79	122.90
4	A	603	NAG	C2-N2-C7	-2.32	119.79	122.90
4	A	607	NAG	C8-C7-N2	2.24	119.83	116.12
4	A	603	NAG	C8-C7-N2	2.17	119.72	116.12
4	A	604	NAG	O5-C1-C2	-2.08	108.07	111.29
4	A	606	NAG	C2-N2-C7	-2.04	120.16	122.90

There are no chirality outliers.

All (14) torsion outliers are listed below:

Mol	Chain	Res	Type	Atoms
6	A	614	PEG	C4-C3-O2-C2
6	A	614	PEG	O1-C1-C2-O2
9	A	631	EDO	O1-C1-C2-O2
9	A	632	EDO	O1-C1-C2-O2
7	A	618	PGE	C1-C2-O2-C3
6	A	614	PEG	C1-C2-O2-C3
9	A	624	EDO	O1-C1-C2-O2
8	A	620	1PE	C23-C13-OH4-C24
4	A	605	NAG	O5-C5-C6-O6
6	A	617	PEG	C4-C3-O2-C2
9	A	622	EDO	O1-C1-C2-O2
9	A	623	EDO	O1-C1-C2-O2
6	A	616	PEG	C4-C3-O2-C2
9	A	627	EDO	O1-C1-C2-O2

There are no ring outliers.

10 monomers are involved in 18 short contacts:

Mol	Chain	Res	Type	Clashes	Symm-Clashes
5	A	611	PO4	1	0
9	A	627	EDO	2	0
9	A	624	EDO	3	0

Continued on next page...

Continued from previous page...

Mol	Chain	Res	Type	Clashes	Symm-Clashes
9	A	623	EDO	4	0
6	A	614	PEG	1	0
7	A	619	PGE	1	0
9	A	631	EDO	2	0
9	A	621	EDO	1	0
6	A	617	PEG	2	0
5	A	612	PO4	1	0

5.7 Other polymers [i](#)

There are no such residues in this entry.

5.8 Polymer linkage issues [i](#)

There are no chain breaks in this entry.

6 Fit of model and data [i](#)

6.1 Protein, DNA and RNA chains [i](#)

In the following table, the column labelled ‘#RSRZ > 2’ contains the number (and percentage) of RSRZ outliers, followed by percent RSRZ outliers for the chain as percentile scores relative to all X-ray entries and entries of similar resolution. The OWAB column contains the minimum, median, 95th percentile and maximum values of the occupancy-weighted average B-factor per residue. The column labelled ‘Q < 0.9’ lists the number of (and percentage) of residues with an average occupancy less than 0.9.

Mol	Chain	Analysed	<RSRZ>	#RSRZ>2	OWAB(Å ²)	Q<0.9
1	A	507/516 (98%)	-0.41	11 (2%) 62 66	7, 15, 33, 70	24 (4%)

All (11) RSRZ outliers are listed below:

Mol	Chain	Res	Type	RSRZ
1	A	220	CYS	3.5
1	A	224	LYS	3.4
1	A	223	ALA	3.2
1	A	451	CYS	3.2
1	A	222	PHE	3.1
1	A	22	GLY	3.1
1	A	2	PRO	2.9
1	A	19	GLU	2.8
1	A	437	CYS	2.7
1	A	21	ARG	2.6
1	A	20	ASP	2.0

6.2 Non-standard residues in protein, DNA, RNA chains [i](#)

There are no non-standard protein/DNA/RNA residues in this entry.

6.3 Carbohydrates [i](#)

In the following table, the Atoms column lists the number of modelled atoms in the group and the number defined in the chemical component dictionary. The B-factors column lists the minimum, median, 95th percentile and maximum values of B factors of atoms in the group. The column labelled ‘Q < 0.9’ lists the number of atoms with occupancy less than 0.9.

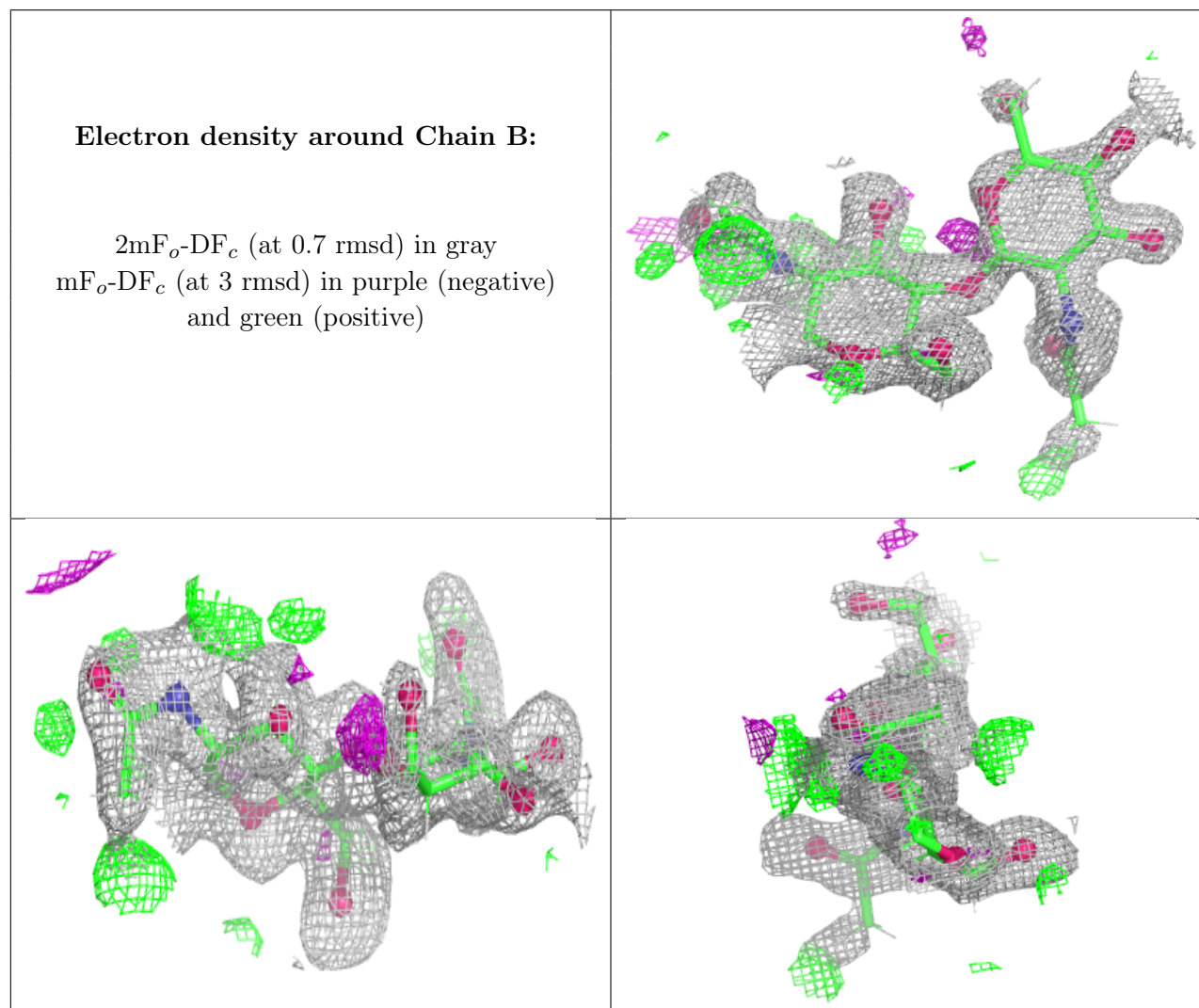
Mol	Type	Chain	Res	Atoms	RSCC	RSR	B-factors(Å ²)	Q<0.9
2	NAG	B	2	14/15	0.86	0.14	43,50,60,61	28

Continued on next page...

Continued from previous page...

Mol	Type	Chain	Res	Atoms	RSCC	RSR	B-factors(\AA^2)	Q<0.9
2	NAG	B	1	14/15	0.91	0.11	27,40,51,51	0

The following is a graphical depiction of the model fit to experimental electron density for oligosaccharide. Each fit is shown from different orientation to approximate a three-dimensional view.



6.4 Ligands ⓘ

In the following table, the Atoms column lists the number of modelled atoms in the group and the number defined in the chemical component dictionary. The B-factors column lists the minimum, median, 95th percentile and maximum values of B factors of atoms in the group. The column labelled 'Q< 0.9' lists the number of atoms with occupancy less than 0.9.

Mol	Type	Chain	Res	Atoms	RSCC	RSR	B-factors(\AA^2)	Q<0.9
4	NAG	A	606	14/15	0.76	0.17	49,61,73,73	28

Continued on next page...

Continued from previous page...

Mol	Type	Chain	Res	Atoms	RSCC	RSR	B-factors(\AA^2)	Q<0.9
9	EDO	A	630	4/4	0.81	0.16	52,62,63,63	0
6	PEG	A	616	7/7	0.85	0.16	58,69,70,70	0
7	PGE	A	619	10/10	0.86	0.14	55,67,73,74	0
9	EDO	A	624	4/4	0.87	0.14	47,57,59,60	0
9	EDO	A	625	4/4	0.87	0.15	60,72,74,75	0
9	EDO	A	627	4/4	0.87	0.13	56,67,67,68	0
6	PEG	A	613	7/7	0.87	0.13	53,64,67,68	0
6	PEG	A	614	7/7	0.88	0.14	45,54,63,63	0
9	EDO	A	623	4/4	0.88	0.15	40,48,48,51	0
9	EDO	A	629	4/4	0.88	0.12	47,57,59,60	0
6	PEG	A	617	7/7	0.88	0.14	47,58,69,70	0
9	EDO	A	632	4/4	0.88	0.13	30,37,42,44	0
9	EDO	A	622	4/4	0.89	0.12	51,62,63,64	0
9	EDO	A	628	4/4	0.89	0.14	57,68,69,71	0
4	NAG	A	607	14/15	0.89	0.12	35,44,53,55	28
5	PO4	A	612	5/5	0.89	0.13	56,57,58,59	0
6	PEG	A	615	7/7	0.89	0.13	56,67,70,70	0
9	EDO	A	626	4/4	0.91	0.11	44,53,56,58	0
4	NAG	A	605	14/15	0.91	0.10	36,45,56,58	0
9	EDO	A	621	4/4	0.91	0.10	40,48,49,50	0
8	1PE	A	620	16/16	0.92	0.10	33,43,63,65	0
7	PGE	A	618	10/10	0.92	0.11	40,48,58,60	0
9	EDO	A	631	4/4	0.93	0.10	31,37,41,41	0
4	NAG	A	608	14/15	0.95	0.07	26,33,47,47	0
3	FE	A	601	1/1	0.95	0.13	44,44,44,44	1
4	NAG	A	603	14/15	0.96	0.07	20,28,34,36	0
4	NAG	A	604	14/15	0.97	0.05	14,18,23,26	0
5	PO4	A	611	5/5	0.98	0.06	22,27,29,40	0
3	FE	A	602	1/1	1.00	0.01	12,12,12,12	1

6.5 Other polymers ⓘ

There are no such residues in this entry.