



wwPDB EM Validation Summary Report ⓘ

Mar 24, 2026 – 07:45 AM UTC

PDB ID : 9FDA / pdb_00009fda
EMDB ID : EMD-50327
Title : Structure of E. coli 30S-IF1-IF3-mRNA-Edeine complex
Authors : Safdari, H.A.; Wilson, D.N.
Deposited on : 2024-05-16
Resolution : 2.00 Å(reported)

This is a wwPDB EM Validation Summary Report for a publicly released PDB entry.

We welcome your comments at validation@mail.wwpdb.org

A user guide is available at

<https://www.wwpdb.org/validation/2017/EMValidationReportHelp>

with specific help available everywhere you see the ⓘ symbol.

The types of validation reports are described at

<http://www.wwpdb.org/validation/2017/FAQs#types>.

The following versions of software and data (see [references ⓘ](#)) were used in the production of this report:

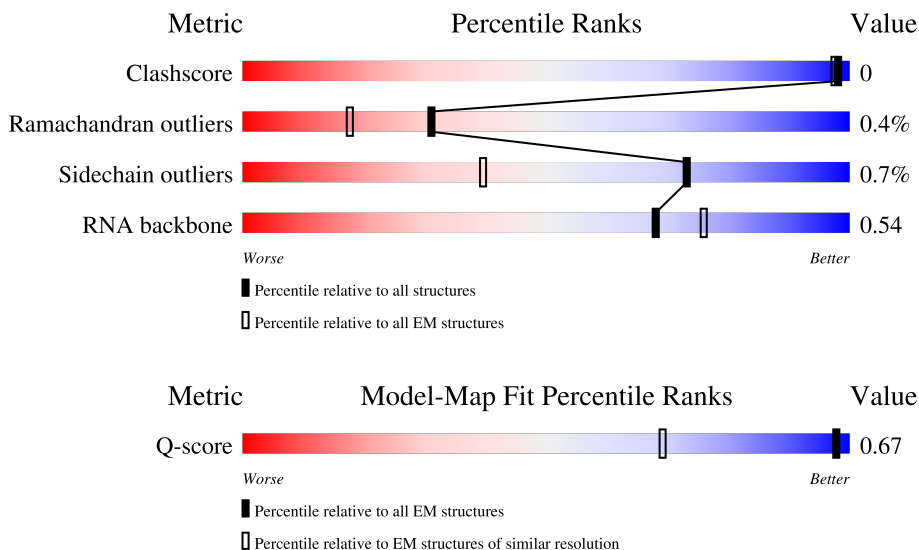
EMDB validation analysis : 0.0.1.dev132
Mogul : 2022.3.0, CSD as543be (2022)
MolProbity : 4-5-2 with Phenix2.0
Buster-report : wwPDB partial adaption of 1.1.7 (2018)
Percentile statistics : 20250101.v01 (using entries in the PDB archive January 1st 2025)
EM percentile statistics : 202505.v01 (Using data in the EMDB archive up until May 2025)
MapQ : 1.9.13
Ideal geometry (proteins) : Engh & Huber (2001)
Ideal geometry (DNA, RNA) : Parkinson et al. (1996)
Validation Pipeline (wwPDB-VP) : 2.49

1 Overall quality at a glance i

The following experimental techniques were used to determine the structure:
ELECTRON MICROSCOPY

The reported resolution of this entry is 2.00 Å.

Percentile scores (ranging between 0-100) for global validation metrics of the entry are shown in the following graphic. The table shows the number of entries on which the scores are based.



Metric	Whole archive (#Entries)	EM structures (#Entries)	Similar EM resolution (#Entries, resolution range(Å))
Clashscore	229148	23984	-
Ramachandran outliers	224038	23583	-
Sidechain outliers	223484	23102	-
RNA backbone	8273	3508	-
Q-score	-	25397	1659 (1.50 - 2.50)

The table below summarises the geometric issues observed across the polymeric chains and their fit to the map. The red, orange, yellow and green segments of the bar indicate the fraction of residues that contain outliers for ≥ 3 , 2, 1 and 0 types of geometric quality criteria respectively. A grey segment represents the fraction of residues that are not modelled. The numeric value for each fraction is indicated below the corresponding segment, with a dot representing fractions $\leq 5\%$. The upper red bar (where present) indicates the fraction of residues that have poor fit to the EM map (all-atom inclusion $< 40\%$). The numeric value is given above the bar.

Mol	Chain	Length	Quality of chain
1	D	206	
2	E	167	
3	F	135	

Continued on next page...

Continued from previous page...

Mol	Chain	Length	Quality of chain
4	H	130	
5	I	72	
6	J	180	
7	K	139	
8	L	124	
9	O	89	
10	P	82	
11	Q	84	
12	R	75	
13	T	87	
14	U	71	
15	B	1542	

2 Entry composition

There are 19 unique types of molecules in this entry. The entry contains 36060 atoms, of which 0 are hydrogens and 0 are deuteriums.

In the tables below, the AltConf column contains the number of residues with at least one atom in alternate conformation and the Trace column contains the number of residues modelled with at most 2 atoms.

- Molecule 1 is a protein called Small ribosomal subunit protein uS4.

Mol	Chain	Residues	Atoms					AltConf	Trace
			Total	C	N	O	S		
1	D	205	1643	1026	315	298	4	0	0

- Molecule 2 is a protein called Small ribosomal subunit protein uS5.

Mol	Chain	Residues	Atoms					AltConf	Trace
			Total	C	N	O	S		
2	E	155	1143	712	216	209	6	0	0

- Molecule 3 is a protein called Small ribosomal subunit protein bS6, fully modified isoform.

Mol	Chain	Residues	Atoms					AltConf	Trace
			Total	C	N	O	S		
3	F	101	824	520	149	149	6	0	0

- Molecule 4 is a protein called Small ribosomal subunit protein uS8.

Mol	Chain	Residues	Atoms					AltConf	Trace
			Total	C	N	O	S		
4	H	129	979	616	173	184	6	0	0

- Molecule 5 is a protein called Translation initiation factor IF-1.

Mol	Chain	Residues	Atoms					AltConf	Trace
			Total	C	N	O	S		
5	I	70	557	350	99	105	3	0	0

- Molecule 6 is a protein called Translation initiation factor IF-3.

Mol	Chain	Residues	Atoms					AltConf	Trace
			Total	C	N	O	S		
6	J	102	832	524	152	152	4	0	0

- Molecule 7 is a protein called Small ribosomal subunit protein uS11.

Mol	Chain	Residues	Atoms					AltConf	Trace
			Total	C	N	O	S		
7	K	116	865	534	169	159	3	0	0

There are 11 discrepancies between the modelled and reference sequences:

Chain	Residue	Modelled	Actual	Comment	Reference
K	119	IAS	ASN	modified residue	UNP P0A7R9
K	140	GLY	-	expression tag	UNP P0A7R9
K	141	CYS	-	expression tag	UNP P0A7R9
K	142	ARG	-	expression tag	UNP P0A7R9
K	143	PRO	-	expression tag	UNP P0A7R9
K	144	PRO	-	expression tag	UNP P0A7R9
K	145	LYS	-	expression tag	UNP P0A7R9
K	146	LYS	-	expression tag	UNP P0A7R9
K	147	ARG	-	expression tag	UNP P0A7R9
K	148	ARG	-	expression tag	UNP P0A7R9
K	149	VAL	-	expression tag	UNP P0A7R9

- Molecule 8 is a protein called Small ribosomal subunit protein uS12.

Mol	Chain	Residues	Atoms					AltConf	Trace
			Total	C	N	O	S		
8	L	121	942	582	193	162	5	0	0

- Molecule 9 is a protein called Small ribosomal subunit protein uS15.

Mol	Chain	Residues	Atoms					AltConf	Trace
			Total	C	N	O	S		
9	O	88	714	439	144	130	1	0	0

- Molecule 10 is a protein called Small ribosomal subunit protein bS16.

Mol	Chain	Residues	Atoms					AltConf	Trace
			Total	C	N	O	S		
10	P	80	638	400	126	111	1	0	0

- Molecule 11 is a protein called Small ribosomal subunit protein uS17.

Mol	Chain	Residues	Atoms					AltConf	Trace
			Total	C	N	O	S		
11	Q	78	632	400	118	111	3	0	0

- Molecule 12 is a protein called Small ribosomal subunit protein bS18.

Mol	Chain	Residues	Atoms					AltConf	Trace
			Total	C	N	O	S		
12	R	64	524	330	99	94	1	0	0

- Molecule 13 is a protein called Small ribosomal subunit protein bS20.

Mol	Chain	Residues	Atoms					AltConf	Trace
			Total	C	N	O	S		
13	T	84	656	405	136	112	3	0	0

- Molecule 14 is a protein called Small ribosomal subunit protein bS21.

Mol	Chain	Residues	Atoms					AltConf	Trace
			Total	C	N	O	S		
14	U	65	540	335	114	90	1	0	0

- Molecule 15 is a RNA chain called 16S rRNA.

Mol	Chain	Residues	Atoms					AltConf	Trace
			Total	C	N	O	P		
15	B	1051	22602	10083	4174	7294	1051	0	0

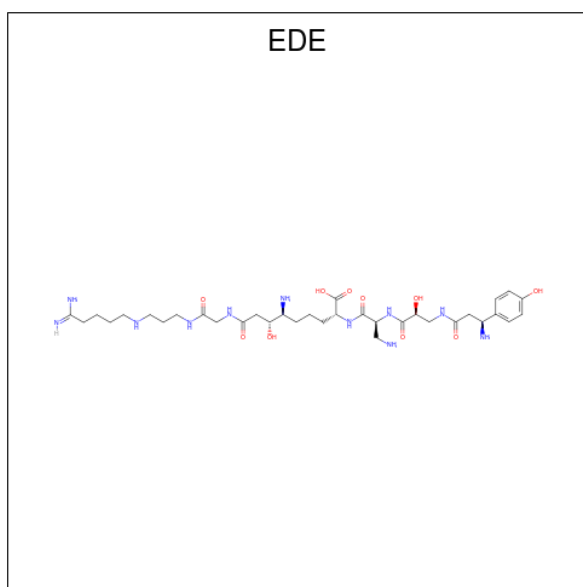
- Molecule 16 is POTASSIUM ION (CCD ID: K) (formula: K).

Mol	Chain	Residues	Atoms	AltConf
16	D	1	Total K 1 1	0
16	F	1	Total K 1 1	0
16	B	23	Total K 23 23	0

- Molecule 17 is MAGNESIUM ION (CCD ID: MG) (formula: Mg).

Mol	Chain	Residues	Atoms	AltConf
17	B	53	Total Mg 53 53	0

- Molecule 18 is EDEINE B (CCD ID: EDE) (formula: C₃₄H₅₉N₁₁O₁₀) (labeled as "Ligand of Interest" by depositor).



Mol	Chain	Residues	Atoms				AltConf
			Total	C	N	O	
18	B	1	55	34	11	10	0

- Molecule 19 is water.

Mol	Chain	Residues	Atoms		AltConf
19	D	40	Total	O	0
			40	40	
19	E	31	Total	O	0
			31	31	
19	F	1	Total	O	0
			1	1	
19	H	21	Total	O	0
			21	21	
19	I	2	Total	O	0
			2	2	
19	J	2	Total	O	0
			2	2	
19	K	17	Total	O	0
			17	17	
19	L	39	Total	O	0
			39	39	
19	O	18	Total	O	0
			18	18	
19	P	25	Total	O	0
			25	25	
19	Q	10	Total	O	0
			10	10	

Continued on next page...

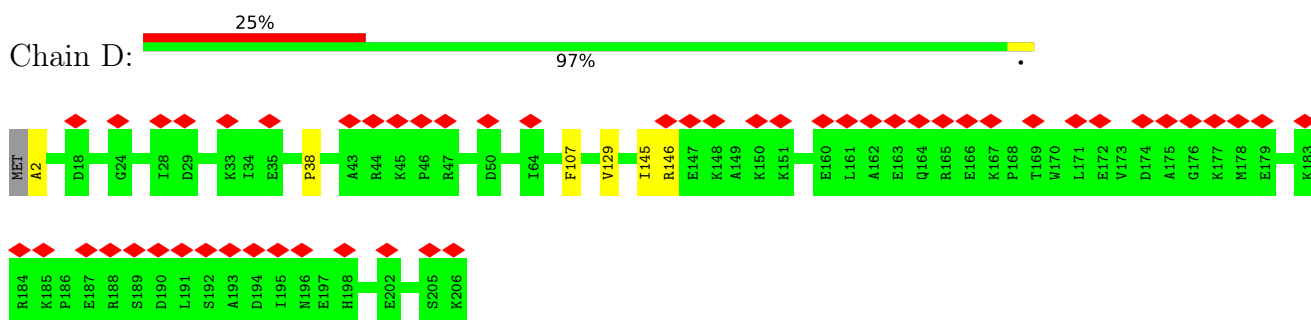
Continued from previous page...

Mol	Chain	Residues	Atoms		AltConf
19	R	6	Total 6	O 6	0
19	T	26	Total 26	O 26	0
19	U	7	Total 7	O 7	0
19	B	1591	Total 1591	O 1591	0

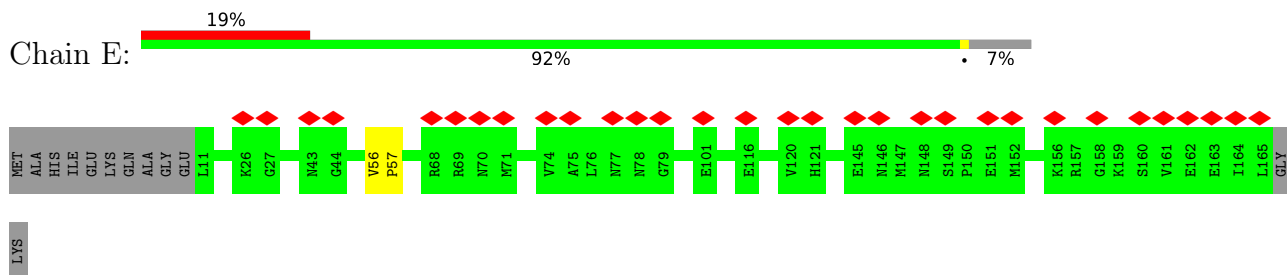
3 Residue-property plots [i](#)

These plots are drawn for all protein, RNA, DNA and oligosaccharide chains in the entry. The first graphic for a chain summarises the proportions of the various outlier classes displayed in the second graphic. The second graphic shows the sequence view annotated by issues in geometry and atom inclusion in map density. Residues are color-coded according to the number of geometric quality criteria for which they contain at least one outlier: green = 0, yellow = 1, orange = 2 and red = 3 or more. A red diamond above a residue indicates a poor fit to the EM map for this residue (all-atom inclusion < 40%). Stretches of 2 or more consecutive residues without any outlier are shown as a green connector. Residues present in the sample, but not in the model, are shown in grey.

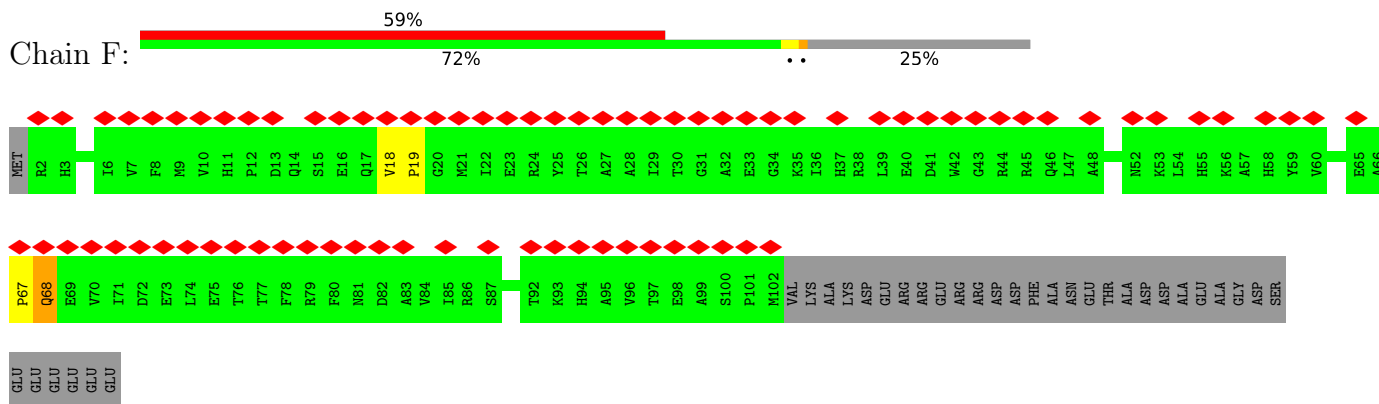
- Molecule 1: Small ribosomal subunit protein uS4



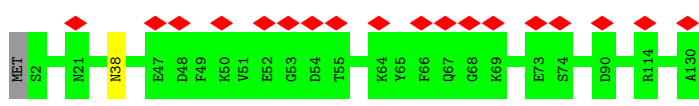
- Molecule 2: Small ribosomal subunit protein uS5



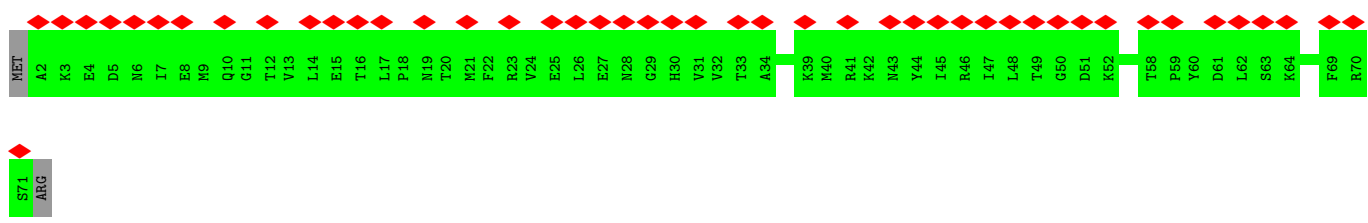
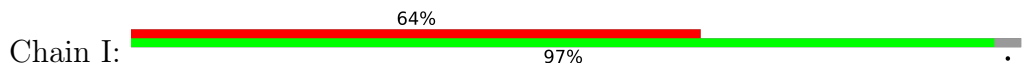
- Molecule 3: Small ribosomal subunit protein bS6, fully modified isoform



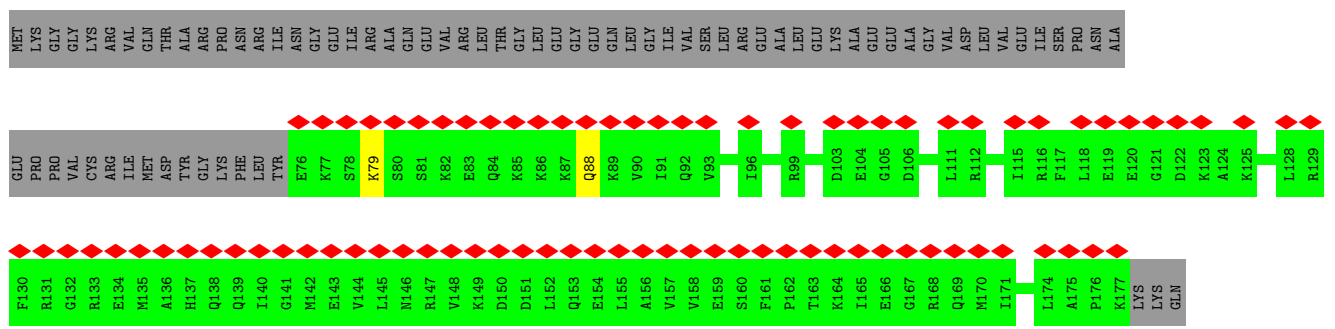
- Molecule 4: Small ribosomal subunit protein uS8



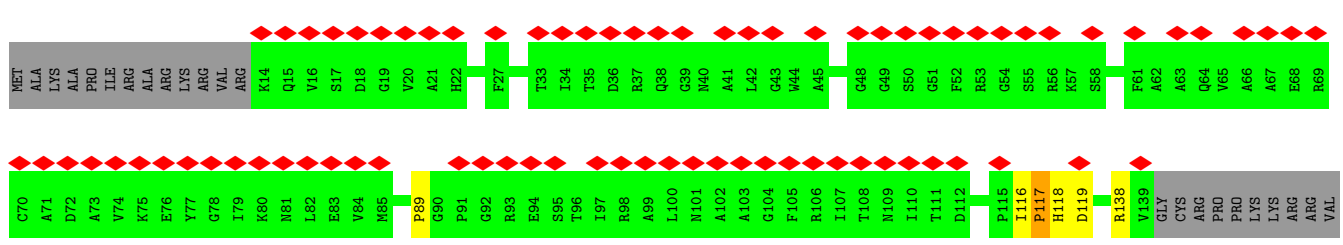
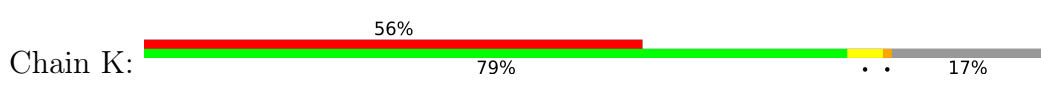
• Molecule 5: Translation initiation factor IF-1



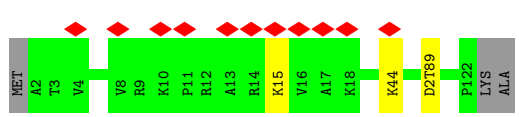
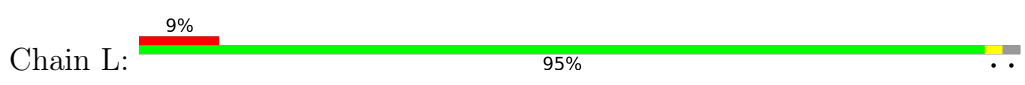
• Molecule 6: Translation initiation factor IF-3



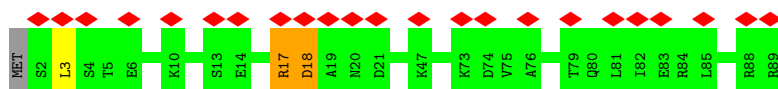
• Molecule 7: Small ribosomal subunit protein uS11



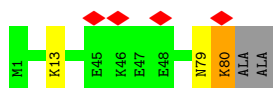
• Molecule 8: Small ribosomal subunit protein uS12



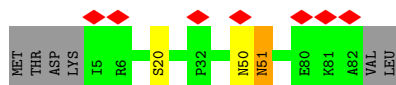
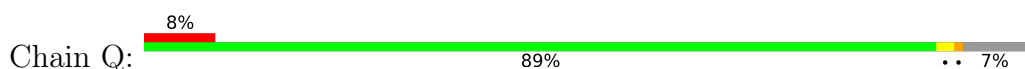
• Molecule 9: Small ribosomal subunit protein uS15



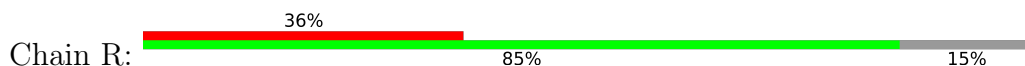
- Molecule 10: Small ribosomal subunit protein bS16



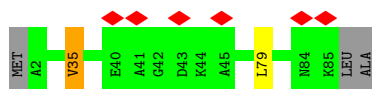
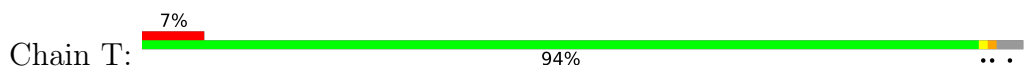
- Molecule 11: Small ribosomal subunit protein uS17



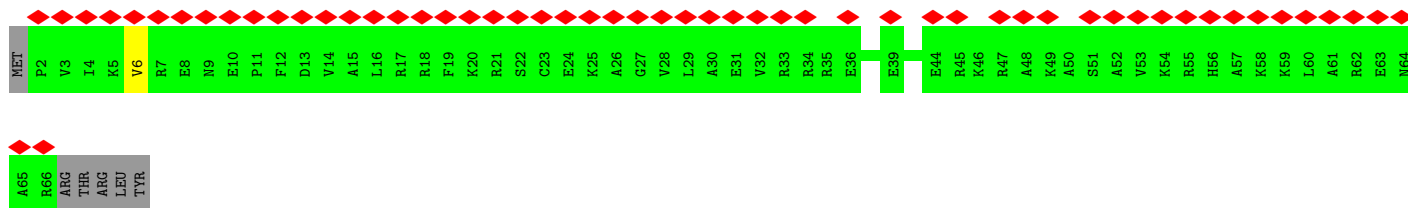
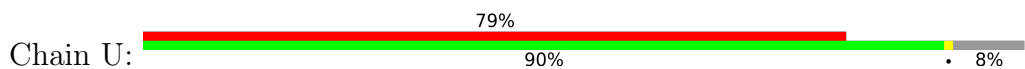
- Molecule 12: Small ribosomal subunit protein bS18



- Molecule 13: Small ribosomal subunit protein bS20

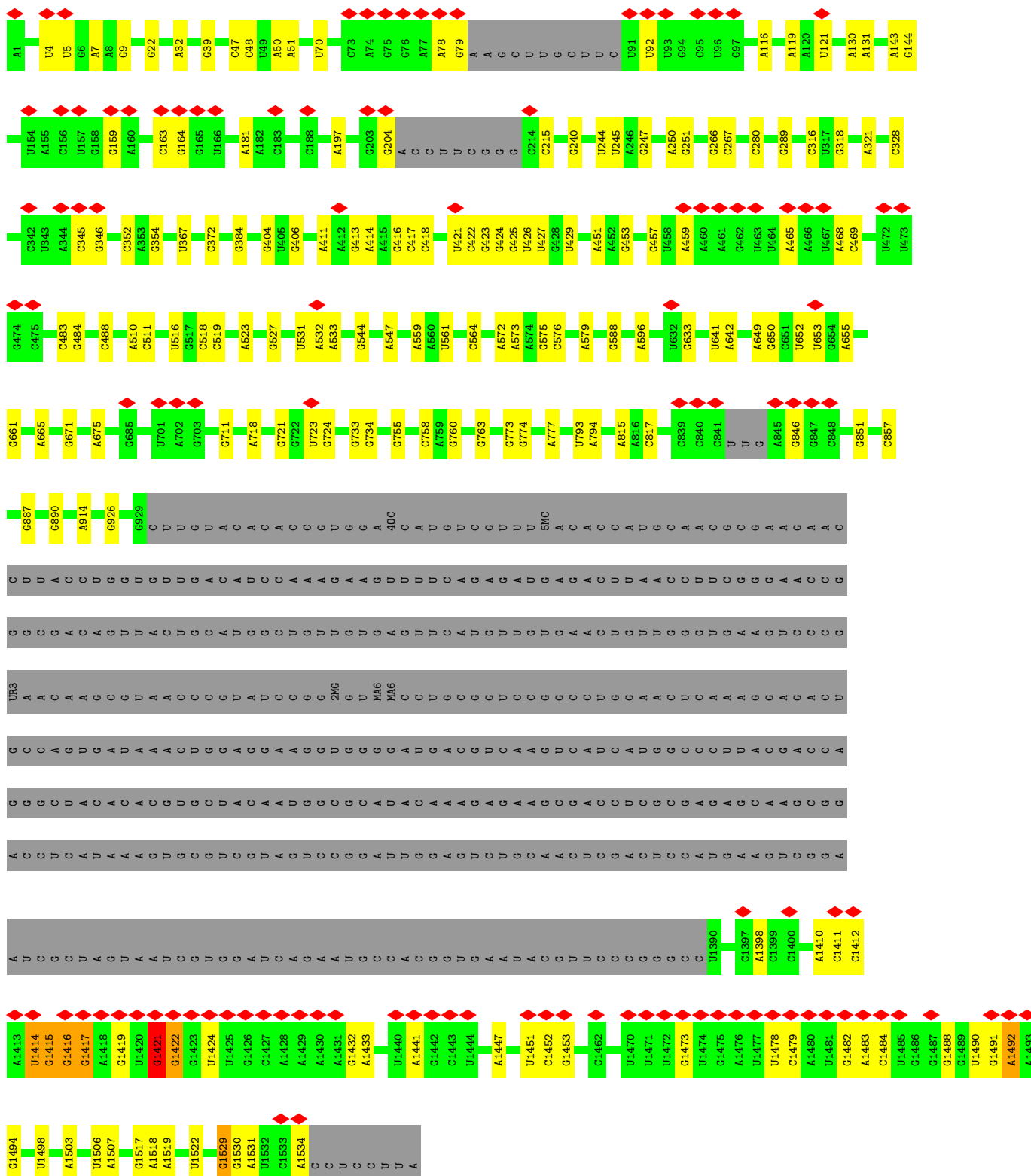


- Molecule 14: Small ribosomal subunit protein bS21



- Molecule 15: 16S rRNA





4 Experimental information

Property	Value	Source
EM reconstruction method	SINGLE PARTICLE	Depositor
Imposed symmetry	POINT, Not provided	
Number of particles used	642300	Depositor
Resolution determination method	FSC 0.143 CUT-OFF	Depositor
CTF correction method	PHASE FLIPPING AND AMPLITUDE CORRECTION	Depositor
Microscope	TFS KRIOS	Depositor
Voltage (kV)	300	Depositor
Electron dose ($e^-/\text{\AA}^2$)	1.14	Depositor
Minimum defocus (nm)	300	Depositor
Maximum defocus (nm)	1100	Depositor
Magnification	Not provided	
Image detector	GATAN K3 BIOQUANTUM (6k x 4k)	Depositor
Maximum map value	0.144	Depositor
Minimum map value	-0.065	Depositor
Average map value	0.000	Depositor
Map value standard deviation	0.002	Depositor
Recommended contour level	0.017	Depositor
Map size (\AA)	332.80002, 332.80002, 332.80002	wwPDB
Map dimensions	400, 400, 400	wwPDB
Map angles ($^\circ$)	90.0, 90.0, 90.0	wwPDB
Pixel spacing (\AA)	0.832, 0.832, 0.832	Depositor

5 Model quality i

5.1 Standard geometry i

Bond lengths and bond angles in the following residue types are not validated in this section: UR3, MA6, PSU, D2T, G7M, EDE, IAS, 5MC, 2MG, MG, 4OC, K

The Z score for a bond length (or angle) is the number of standard deviations the observed value is removed from the expected value. A bond length (or angle) with $|Z| > 5$ is considered an outlier worth inspection. RMSZ is the root-mean-square of all Z scores of the bond lengths (or angles).

Mol	Chain	Bond lengths		Bond angles	
		RMSZ	# $ Z > 5$	RMSZ	# $ Z > 5$
1	D	0.58	0/1665	0.96	1/2227 (0.0%)
2	E	0.59	0/1156	0.90	0/1556
3	F	0.59	0/843	0.88	0/1140
4	H	0.59	0/989	0.86	0/1326
5	I	0.59	0/564	0.80	0/759
6	J	0.59	0/840	0.92	0/1114
7	K	0.66	0/872	0.91	1/1177 (0.1%)
8	L	0.63	0/945	0.82	0/1268
9	O	0.55	0/722	0.99	0/964
10	P	0.64	0/648	0.88	0/870
11	Q	0.59	0/641	0.79	0/860
12	R	0.57	0/532	0.96	0/715
13	T	0.59	0/662	1.01	0/877
14	U	0.58	0/547	1.01	0/725
15	B	0.57	2/25111 (0.0%)	0.84	12/39168 (0.0%)
All	All	0.58	2/36737 (0.0%)	0.86	14/54746 (0.0%)

All (2) bond length outliers are listed below:

Mol	Chain	Res	Type	Atoms	Z	Observed(Å)	Ideal(Å)
15	B	527	G7M	O3'-P	5.79	1.62	1.56
15	B	1498	UR3	O3'-P	5.08	1.61	1.56

The worst 5 of 14 bond angle outliers are listed below:

Mol	Chain	Res	Type	Atoms	Z	Observed(°)	Ideal(°)
15	B	510	A	O3'-P-O5'	-7.21	93.19	104.00
7	K	117	PRO	N-CA-C	6.73	122.31	114.03
1	D	38	PRO	N-CA-C	6.63	126.12	112.47
15	B	143	A	O3'-P-O5'	-6.45	94.33	104.00
15	B	652	U	O3'-P-O5'	-6.08	94.88	104.00

There are no chirality outliers.

There are no planarity outliers.

5.2 Too-close contacts [i](#)

In the following table, the Non-H and H(model) columns list the number of non-hydrogen atoms and hydrogen atoms in the chain respectively. The H(added) column lists the number of hydrogen atoms added and optimized by MolProbity. The Clashes column lists the number of clashes within the asymmetric unit, whereas Symm-Clashes lists symmetry-related clashes.

Mol	Chain	Non-H	H(model)	H(added)	Clashes	Symm-Clashes
1	D	1643	0	1707	3	0
2	E	1143	0	1190	1	0
3	F	824	0	812	2	0
4	H	979	0	1031	0	0
5	I	557	0	573	0	0
6	J	832	0	884	0	0
7	K	865	0	871	4	0
8	L	942	0	999	2	0
9	O	714	0	734	1	0
10	P	638	0	656	2	0
11	Q	632	0	669	1	0
12	R	524	0	543	0	0
13	T	656	0	703	1	0
14	U	540	0	576	0	0
15	B	22602	0	11377	13	0
16	B	23	0	0	0	0
16	D	1	0	0	0	0
16	F	1	0	0	0	0
17	B	53	0	0	0	0
18	B	55	0	57	0	0
19	B	1591	0	0	2	0
19	D	40	0	0	0	0
19	E	31	0	0	0	0
19	F	1	0	0	0	0
19	H	21	0	0	0	0
19	I	2	0	0	0	0
19	J	2	0	0	0	0
19	K	17	0	0	0	0
19	L	39	0	0	0	0
19	O	18	0	0	0	0
19	P	25	0	0	0	0
19	Q	10	0	0	0	0
19	R	6	0	0	0	0

Continued on next page...

Continued from previous page...

Mol	Chain	Non-H	H(model)	H(added)	Clashes	Symm-Clashes
19	T	26	0	0	0	0
19	U	7	0	0	0	0
All	All	36060	0	23382	24	0

The all-atom clashscore is defined as the number of clashes found per 1000 atoms (including hydrogen atoms). The all-atom clashscore for this structure is 0.

The worst 5 of 24 close contacts within the same asymmetric unit are listed below, sorted by their clash magnitude.

Atom-1	Atom-2	Interatomic distance (Å)	Clash overlap (Å)
15:B:1415:G:H3'	15:B:1416:G:H8	1.66	0.60
8:L:44:LYS:O	15:B:1492:A:N6	2.43	0.51
7:K:117:PRO:O	15:B:675:A:N3	2.47	0.48
15:B:1414:U:O4'	15:B:1414:U:O2	2.32	0.48
15:B:1421:G:H3'	15:B:1422:G:H5''	1.96	0.47

There are no symmetry-related clashes.

5.3 Torsion angles [i](#)

5.3.1 Protein backbone [i](#)

In the following table, the Percentiles column shows the percent Ramachandran outliers of the chain as a percentile score with respect to all PDB entries followed by that with respect to all EM entries.

The Analysed column shows the number of residues for which the backbone conformation was analysed, and the total number of residues.

Mol	Chain	Analysed	Favoured	Allowed	Outliers	Percentiles	
1	D	203/206 (98%)	196 (97%)	7 (3%)	0	100	100
2	E	153/167 (92%)	148 (97%)	5 (3%)	0	100	100
3	F	99/135 (73%)	92 (93%)	6 (6%)	1 (1%)	12	8
4	H	127/130 (98%)	122 (96%)	5 (4%)	0	100	100
5	I	68/72 (94%)	67 (98%)	1 (2%)	0	100	100
6	J	100/180 (56%)	92 (92%)	6 (6%)	2 (2%)	6	2
7	K	112/139 (81%)	104 (93%)	8 (7%)	0	100	100
8	L	118/124 (95%)	114 (97%)	4 (3%)	0	100	100

Continued on next page...

Continued from previous page...

Mol	Chain	Analysed	Favoured	Allowed	Outliers	Percentiles	
9	O	86/89 (97%)	81 (94%)	4 (5%)	1 (1%)	10	6
10	P	78/82 (95%)	75 (96%)	3 (4%)	0	100	100
11	Q	76/84 (90%)	73 (96%)	2 (3%)	1 (1%)	9	5
12	R	62/75 (83%)	61 (98%)	1 (2%)	0	100	100
13	T	82/87 (94%)	80 (98%)	2 (2%)	0	100	100
14	U	63/71 (89%)	61 (97%)	2 (3%)	0	100	100
All	All	1427/1641 (87%)	1366 (96%)	56 (4%)	5 (0%)	31	27

All (5) Ramachandran outliers are listed below:

Mol	Chain	Res	Type
3	F	68	GLN
6	J	88	GLN
9	O	18	ASP
11	Q	51	ASN
6	J	79	LYS

5.3.2 Protein sidechains [i](#)

In the following table, the Percentiles column shows the percent sidechain outliers of the chain as a percentile score with respect to all PDB entries followed by that with respect to all EM entries.

The Analysed column shows the number of residues for which the sidechain conformation was analysed, and the total number of residues.

Mol	Chain	Analysed	Rotameric	Outliers	Percentiles	
1	D	172/173 (99%)	172 (100%)	0	100	100
2	E	118/126 (94%)	118 (100%)	0	100	100
3	F	88/116 (76%)	88 (100%)	0	100	100
4	H	104/105 (99%)	103 (99%)	1 (1%)	68	75
5	I	63/65 (97%)	63 (100%)	0	100	100
6	J	92/156 (59%)	92 (100%)	0	100	100
7	K	88/107 (82%)	87 (99%)	1 (1%)	65	73
8	L	101/103 (98%)	101 (100%)	0	100	100
9	O	76/77 (99%)	74 (97%)	2 (3%)	40	44

Continued on next page...

Continued from previous page...

Mol	Chain	Analysed	Rotameric	Outliers	Percentiles	
10	P	65/65 (100%)	64 (98%)	1 (2%)	57	64
11	Q	72/78 (92%)	71 (99%)	1 (1%)	59	66
12	R	55/65 (85%)	55 (100%)	0	100	100
13	T	64/66 (97%)	63 (98%)	1 (2%)	55	62
14	U	55/61 (90%)	54 (98%)	1 (2%)	51	58
All	All	1213/1363 (89%)	1205 (99%)	8 (1%)	73	82

5 of 8 residues with a non-rotameric sidechain are listed below:

Mol	Chain	Res	Type
14	U	6	VAL
13	T	35	VAL
10	P	80	LYS
9	O	17	ARG
11	Q	20	SER

Sometimes sidechains can be flipped to improve hydrogen bonding and reduce clashes. 5 of 24 such sidechains are listed below:

Mol	Chain	Res	Type
7	K	64	GLN
8	L	5	ASN
7	K	118	HIS
9	O	50	HIS
3	F	55	HIS

5.3.3 RNA [i](#)

Mol	Chain	Analysed	Backbone Outliers	Pucker Outliers
15	B	1046/1542 (67%)	147 (14%)	15 (1%)

5 of 147 RNA backbone outliers are listed below:

Mol	Chain	Res	Type
15	B	4	U
15	B	5	U
15	B	7	A
15	B	9	G
15	B	22	G

5 of 15 RNA pucker outliers are listed below:

Mol	Chain	Res	Type
15	B	641	U
15	B	1447	A
15	B	653	U
15	B	1452	C
15	B	1415	G

5.4 Non-standard residues in protein, DNA, RNA chains [i](#)

10 non-standard protein/DNA/RNA residues are modelled in this entry.

In the following table, the Counts columns list the number of bonds (or angles) for which Mogul statistics could be retrieved, the number of bonds (or angles) that are observed in the model and the number of bonds (or angles) that are defined in the Chemical Component Dictionary. The Link column lists molecule types, if any, to which the group is linked. The Z score for a bond length (or angle) is the number of standard deviations the observed value is removed from the expected value. A bond length (or angle) with $|Z| > 2$ is considered an outlier worth inspection. RMSZ is the root-mean-square of all Z scores of the bond lengths (or angles).

Mol	Type	Chain	Res	Link	Bond lengths			Bond angles		
					Counts	RMSZ	# Z > 2	Counts	RMSZ	# Z > 2
7	IAS	K	119	7	6,7,8	1.02	0	3,8,10	1.34	1 (33%)
15	MA6	B	1518	15	23,26,27	0.28	0	33,38,41	0.72	1 (3%)
15	G7M	B	527	15	23,26,27	0.81	1 (4%)	34,39,42	0.62	0
15	5MC	B	1407	15	19,22,23	0.43	0	26,32,35	0.60	0
15	UR3	B	1498	15	19,22,23	0.37	0	26,32,35	0.79	2 (7%)
8	D2T	L	89	8	8,9,10	1.16	0	6,11,13	1.94	4 (66%)
15	PSU	B	516	15,17	18,21,22	1.04	1 (5%)	21,30,33	0.71	0
15	MA6	B	1519	15	23,26,27	0.32	0	33,38,41	0.80	1 (3%)
15	4OC	B	1402	15	20,23,24	0.47	0	25,32,35	0.66	0
15	2MG	B	1516	15	23,26,27	0.47	0	33,38,41	0.51	0

In the following table, the Chirals column lists the number of chiral outliers, the number of chiral centers analysed, the number of these observed in the model and the number defined in the Chemical Component Dictionary. Similar counts are reported in the Torsion and Rings columns. '-' means no outliers of that kind were identified.

Mol	Type	Chain	Res	Link	Chirals	Torsions	Rings
7	IAS	K	119	7	-	3/7/7/8	-
15	MA6	B	1518	15	-	0/11/29/30	0/3/3/3
15	G7M	B	527	15	-	0/7/25/26	0/3/3/3

Continued on next page...

Continued from previous page...

Mol	Type	Chain	Res	Link	Chirals	Torsions	Rings
15	5MC	B	1407	15	-	0/7/25/26	0/2/2/2
15	UR3	B	1498	15	-	0/7/25/26	0/2/2/2
8	D2T	L	89	8	-	4/7/12/14	-
15	PSU	B	516	15,17	-	0/7/25/26	0/2/2/2
15	MA6	B	1519	15	-	3/11/29/30	0/3/3/3
15	4OC	B	1402	15	-	0/9/29/30	0/2/2/2
15	2MG	B	1516	15	-	0/9/27/28	0/3/3/3

All (2) bond length outliers are listed below:

Mol	Chain	Res	Type	Atoms	Z	Observed(Å)	Ideal(Å)
15	B	516	PSU	C6-C5	4.12	1.39	1.35
15	B	527	G7M	C8-N7	2.85	1.37	1.33

The worst 5 of 9 bond angle outliers are listed below:

Mol	Chain	Res	Type	Atoms	Z	Observed(°)	Ideal(°)
15	B	1518	MA6	C2-N1-C6	2.89	118.90	111.83
15	B	1519	MA6	C2-N1-C6	2.88	118.86	111.83
8	L	89	D2T	OD1-CG-CB	-2.76	116.66	122.44
8	L	89	D2T	OD2-CG-CB	2.33	118.18	113.15
15	B	1498	UR3	C6-N1-C2	-2.23	119.98	121.80

There are no chirality outliers.

5 of 10 torsion outliers are listed below:

Mol	Chain	Res	Type	Atoms
8	L	89	D2T	CA-CB-CG-OD1
8	L	89	D2T	CA-CB-CG-OD2
15	B	1519	MA6	O4'-C4'-C5'-O5'
7	K	119	IAS	N-CA-CB-CG
15	B	1519	MA6	C3'-C4'-C5'-O5'

There are no ring outliers.

No monomer is involved in short contacts.

5.5 Carbohydrates [i](#)

There are no oligosaccharides in this entry.

5.6 Ligand geometry

Of 79 ligands modelled in this entry, 78 are monoatomic - leaving 1 for Mogul analysis.

In the following table, the Counts columns list the number of bonds (or angles) for which Mogul statistics could be retrieved, the number of bonds (or angles) that are observed in the model and the number of bonds (or angles) that are defined in the Chemical Component Dictionary. The Link column lists molecule types, if any, to which the group is linked. The Z score for a bond length (or angle) is the number of standard deviations the observed value is removed from the expected value. A bond length (or angle) with $|Z| > 2$ is considered an outlier worth inspection. RMSZ is the root-mean-square of all Z scores of the bond lengths (or angles).

Mol	Type	Chain	Res	Link	Bond lengths			Bond angles		
					Counts	RMSZ	# Z > 2	Counts	RMSZ	# Z > 2
18	EDE	B	1677	-	54,55,55	0.45	0	61,70,70	0.65	0

In the following table, the Chirals column lists the number of chiral outliers, the number of chiral centers analysed, the number of these observed in the model and the number defined in the Chemical Component Dictionary. Similar counts are reported in the Torsion and Rings columns. '-' means no outliers of that kind were identified.

Mol	Type	Chain	Res	Link	Chirals	Torsions	Rings
18	EDE	B	1677	-	-	23/66/66/66	0/1/1/1

There are no bond length outliers.

There are no bond angle outliers.

There are no chirality outliers.

5 of 23 torsion outliers are listed below:

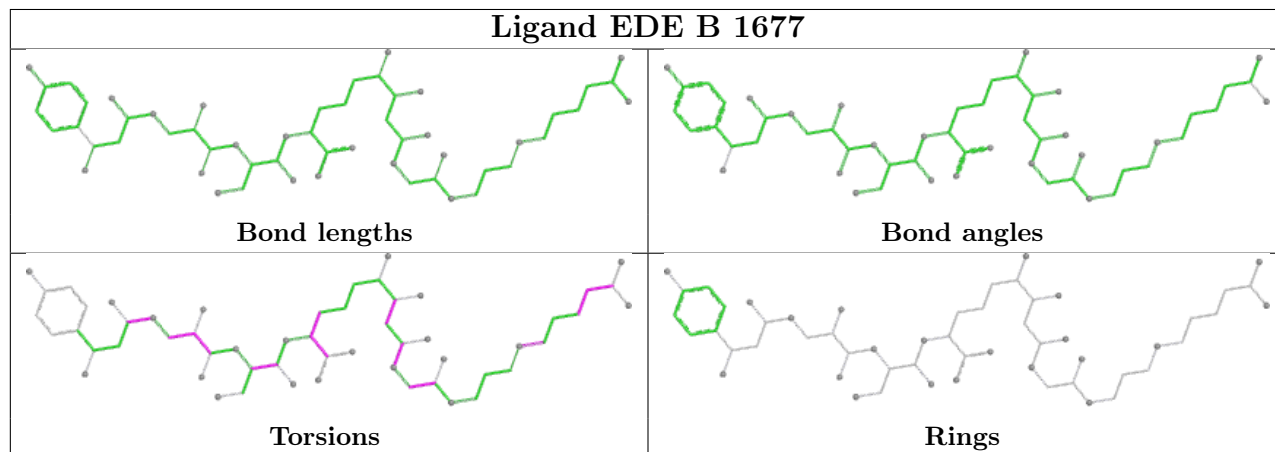
Mol	Chain	Res	Type	Atoms
18	B	1677	EDE	O42-C3-C4-N5
18	B	1677	EDE	O42-C3-C4-O43
18	B	1677	EDE	C13-C14-C15-C16
18	B	1677	EDE	O51-C14-C15-C16
18	B	1677	EDE	C27-C28-C29-N54

There are no ring outliers.

No monomer is involved in short contacts.

The following is a two-dimensional graphical depiction of Mogul quality analysis of bond lengths, bond angles, torsion angles, and ring geometry for all instances of the Ligand of Interest. In addition, ligands with molecular weight > 250 and outliers as shown on the validation Tables will also be included. For torsion angles, if less than 5% of the Mogul distribution of torsion angles is within 10 degrees of the torsion angle in question, then that torsion angle is considered an outlier.

Any bond that is central to one or more torsion angles identified as an outlier by Mogul will be highlighted in the graph. For rings, the root-mean-square deviation (RMSD) between the ring in question and similar rings identified by Mogul is calculated over all ring torsion angles. If the average RMSD is greater than 60 degrees and the minimal RMSD between the ring in question and any Mogul-identified rings is also greater than 60 degrees, then that ring is considered an outlier. The outliers are highlighted in purple. The color gray indicates Mogul did not find sufficient equivalents in the CSD to analyse the geometry.



5.7 Other polymers [i](#)

There are no such residues in this entry.

5.8 Polymer linkage issues [i](#)

There are no chain breaks in this entry.

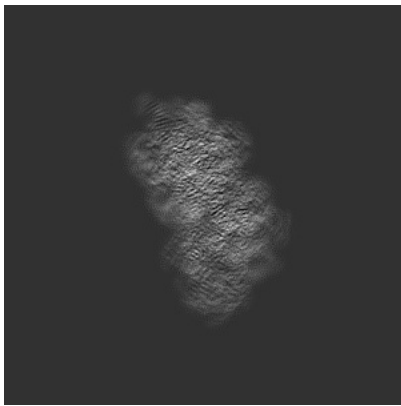
6 Map visualisation [i](#)

This section contains visualisations of the EMDB entry EMD-50327. These allow visual inspection of the internal detail of the map and identification of artifacts.

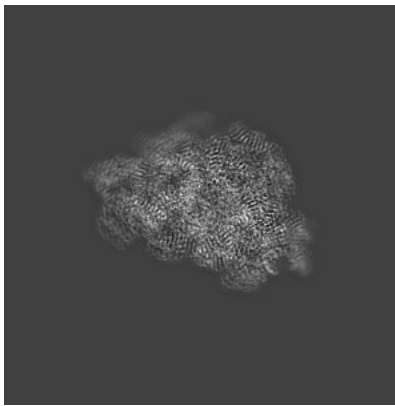
Images derived from a raw map, generated by summing the deposited half-maps, are presented below the corresponding image components of the primary map to allow further visual inspection and comparison with those of the primary map.

6.1 Orthogonal projections [i](#)

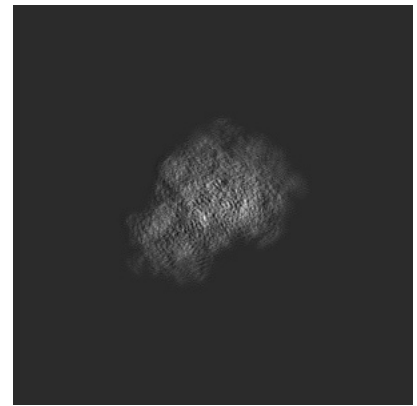
6.1.1 Primary map



X

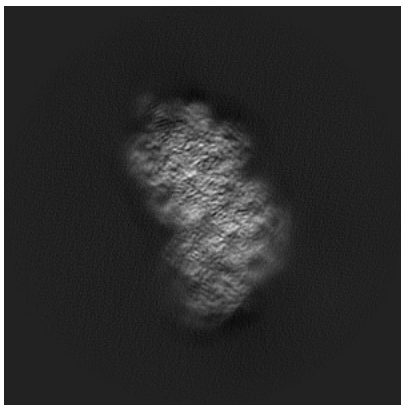


Y

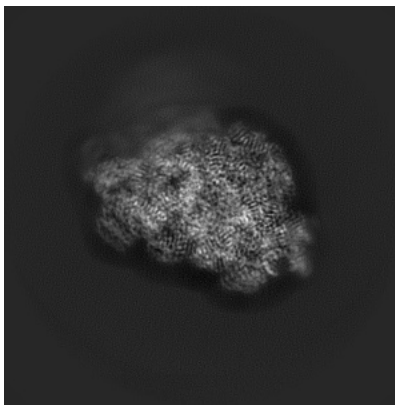


Z

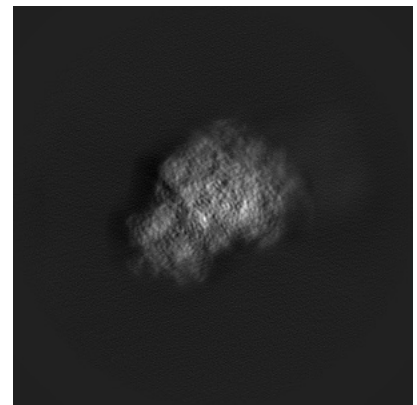
6.1.2 Raw map



X



Y

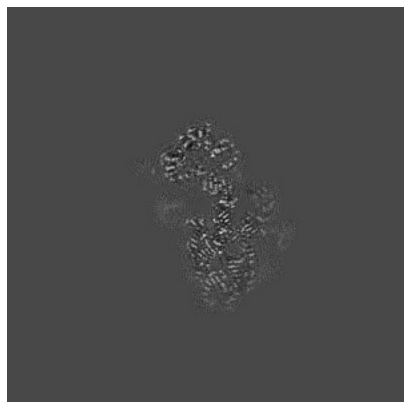


Z

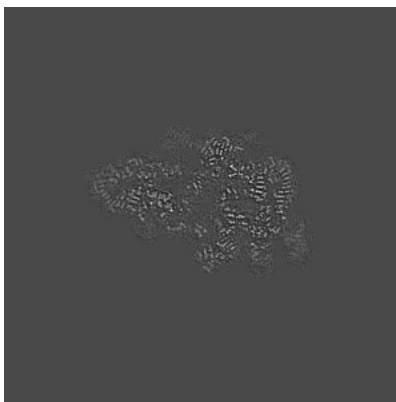
The images above show the map projected in three orthogonal directions.

6.2 Central slices [i](#)

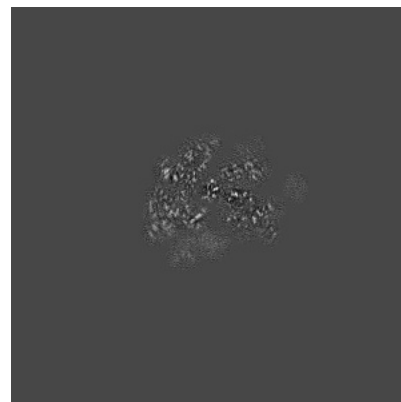
6.2.1 Primary map



X Index: 200

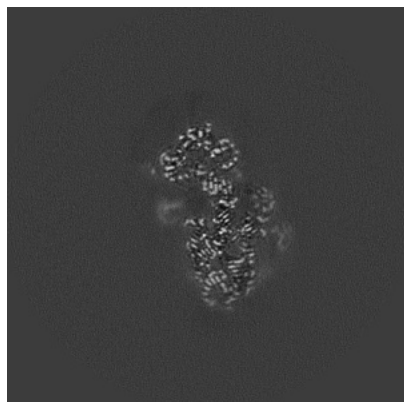


Y Index: 200

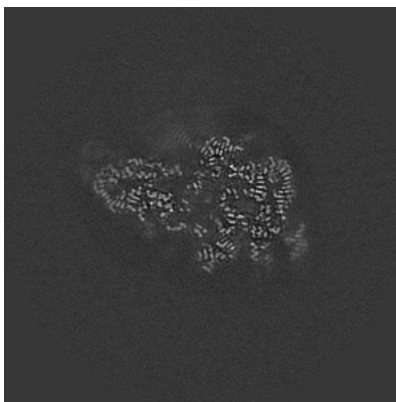


Z Index: 200

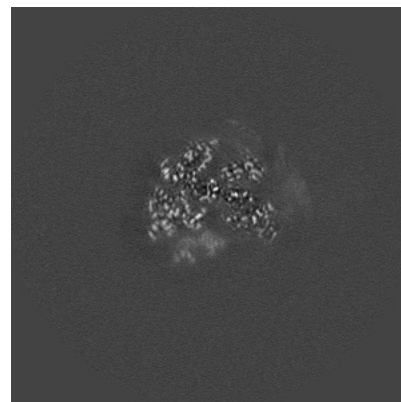
6.2.2 Raw map



X Index: 200



Y Index: 200

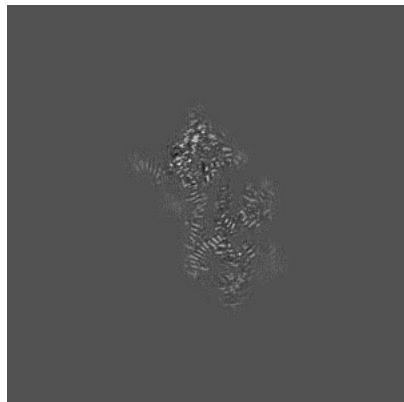


Z Index: 200

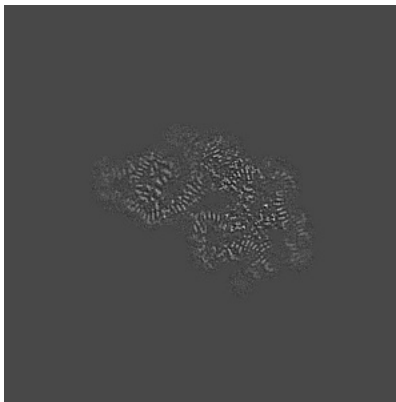
The images above show central slices of the map in three orthogonal directions.

6.3 Largest variance slices [i](#)

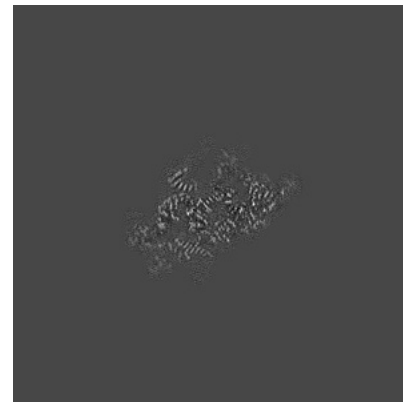
6.3.1 Primary map



X Index: 191

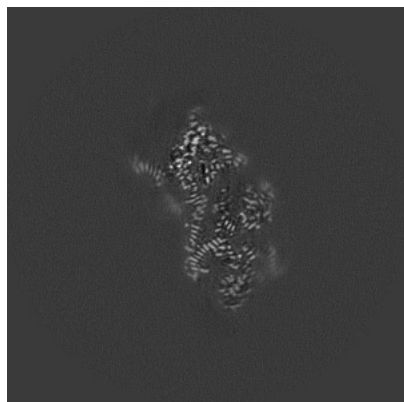


Y Index: 192

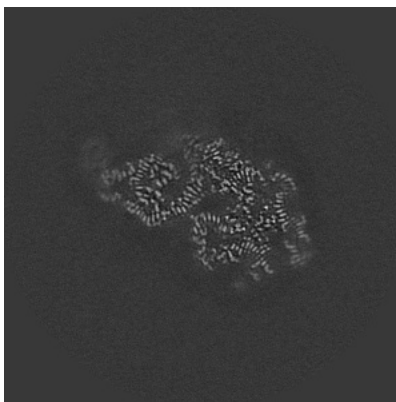


Z Index: 227

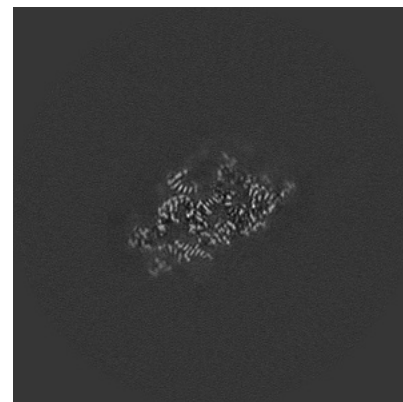
6.3.2 Raw map



X Index: 191



Y Index: 192

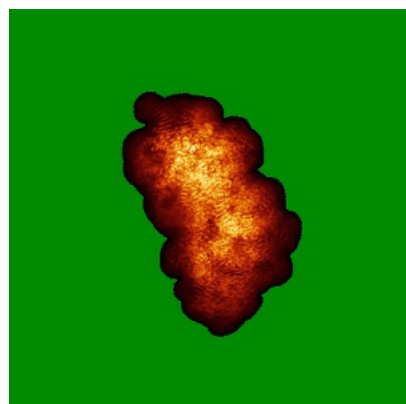


Z Index: 227

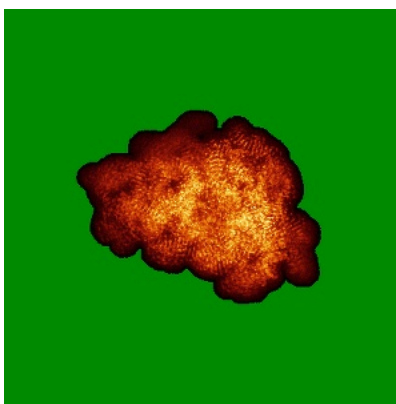
The images above show the largest variance slices of the map in three orthogonal directions.

6.4 Orthogonal standard-deviation projections (False-color) [i](#)

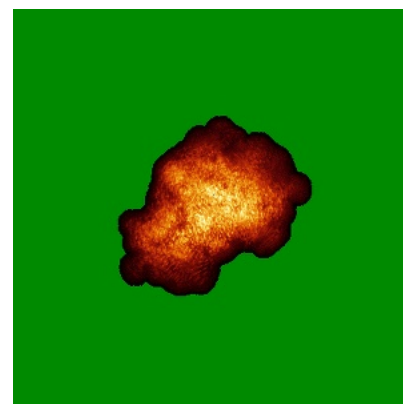
6.4.1 Primary map



X

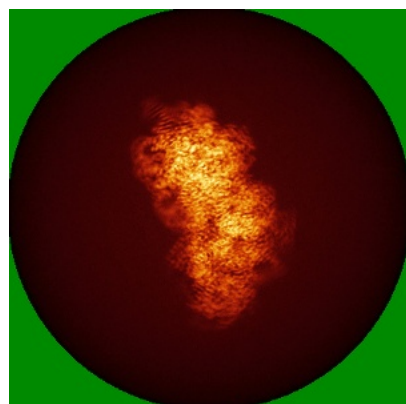


Y

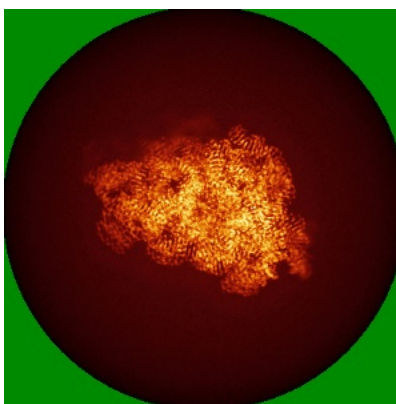


Z

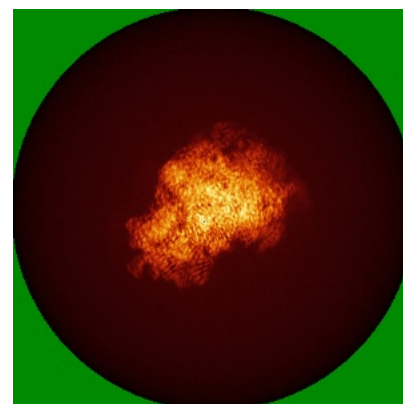
6.4.2 Raw map



X



Y

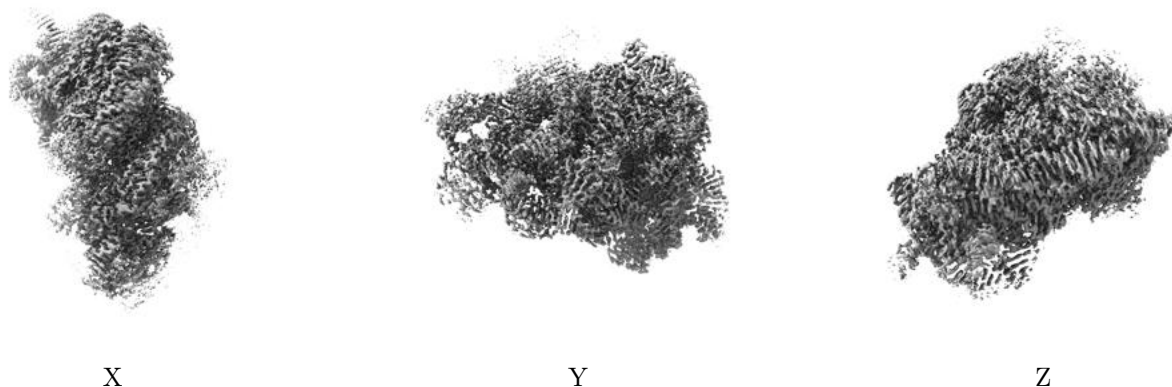


Z

The images above show the map standard deviation projections with false color in three orthogonal directions. Minimum values are shown in green, max in blue, and dark to light orange shades represent small to large values respectively.

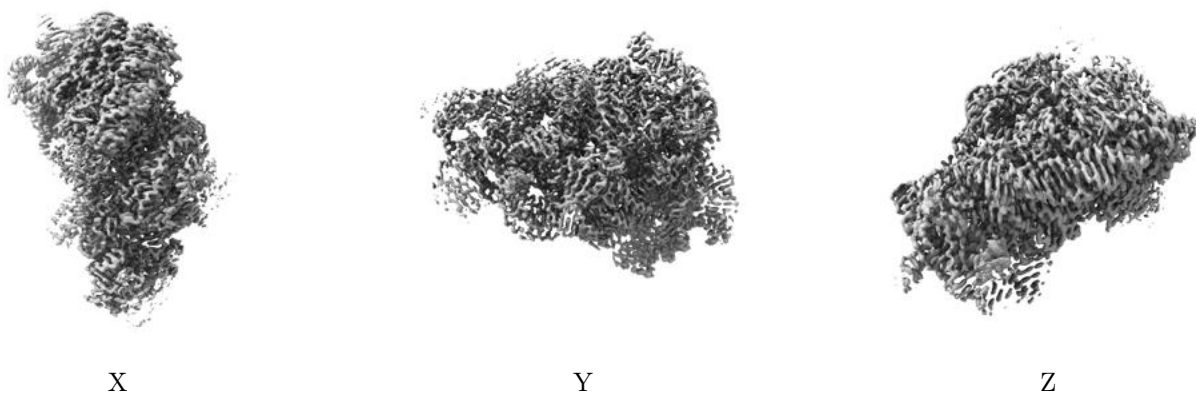
6.5 Orthogonal surface views [i](#)

6.5.1 Primary map



The images above show the 3D surface view of the map at the recommended contour level 0.017. These images, in conjunction with the slice images, may facilitate assessment of whether an appropriate contour level has been provided.

6.5.2 Raw map



These images show the 3D surface of the raw map. The raw map's contour level was selected so that its surface encloses the same volume as the primary map does at its recommended contour level.

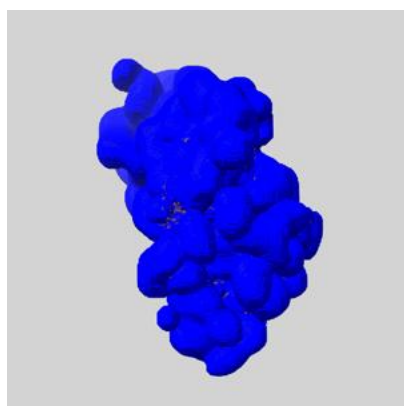
6.6 Mask visualisation [i](#)

This section shows the 3D surface view of the primary map at 50% transparency overlaid with the specified mask at 0% transparency

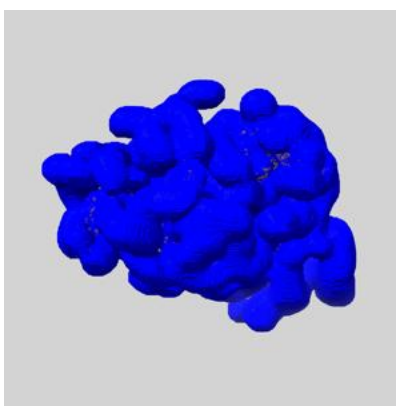
A mask typically either:

- Encompasses the whole structure
- Separates out a domain, a functional unit, a monomer or an area of interest from a larger structure

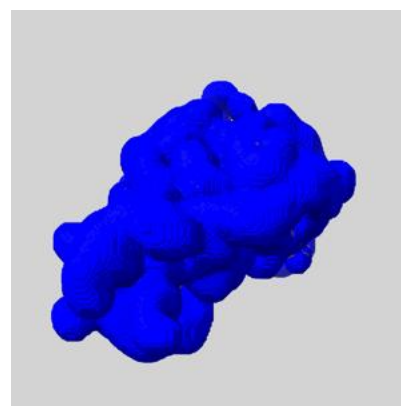
6.6.1 emd_50327_msk_1.map [i](#)



X



Y

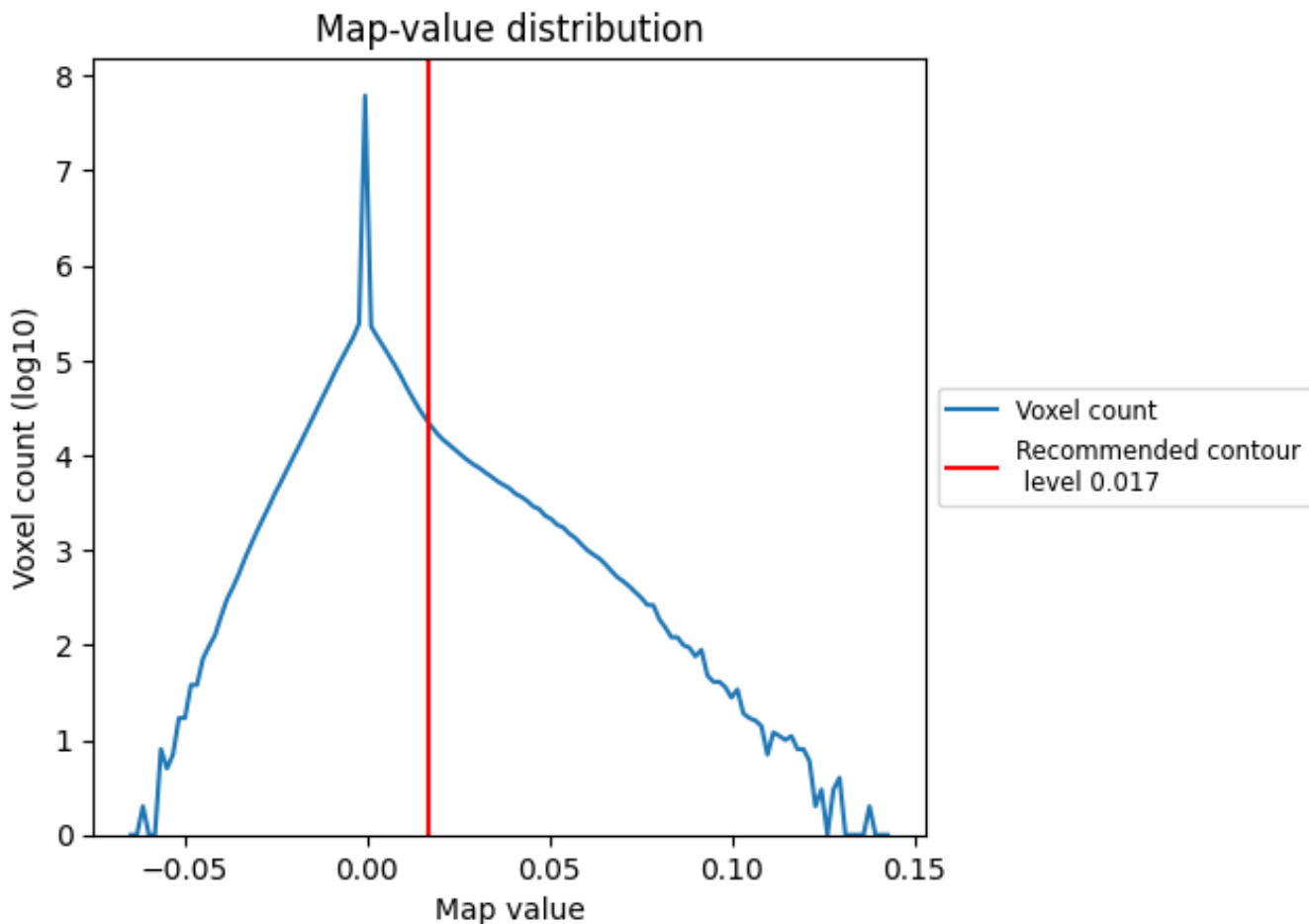


Z

7 Map analysis [i](#)

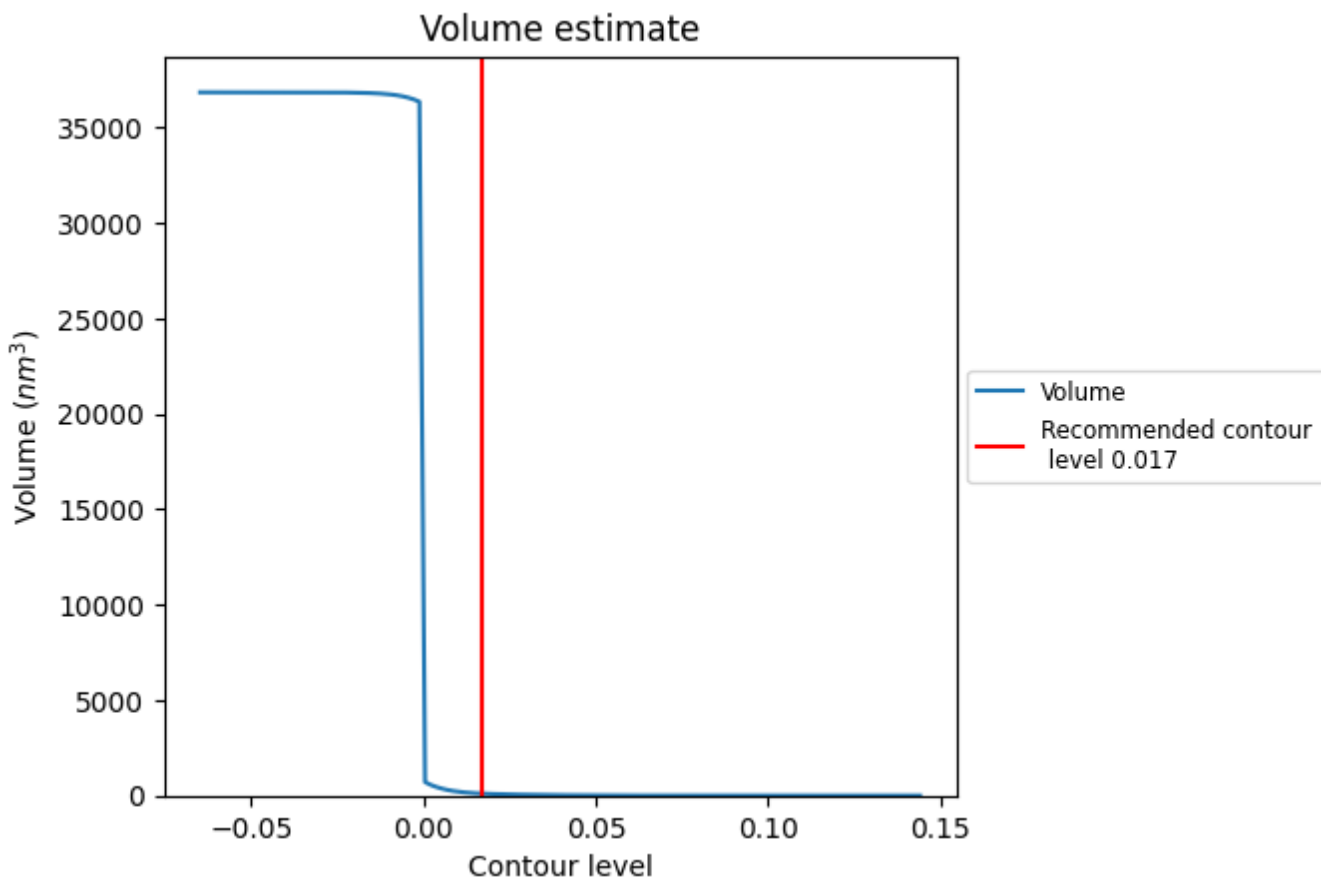
This section contains the results of statistical analysis of the map.

7.1 Map-value distribution [i](#)



The map-value distribution is plotted in 128 intervals along the x-axis. The y-axis is logarithmic. A spike in this graph at zero usually indicates that the volume has been masked.

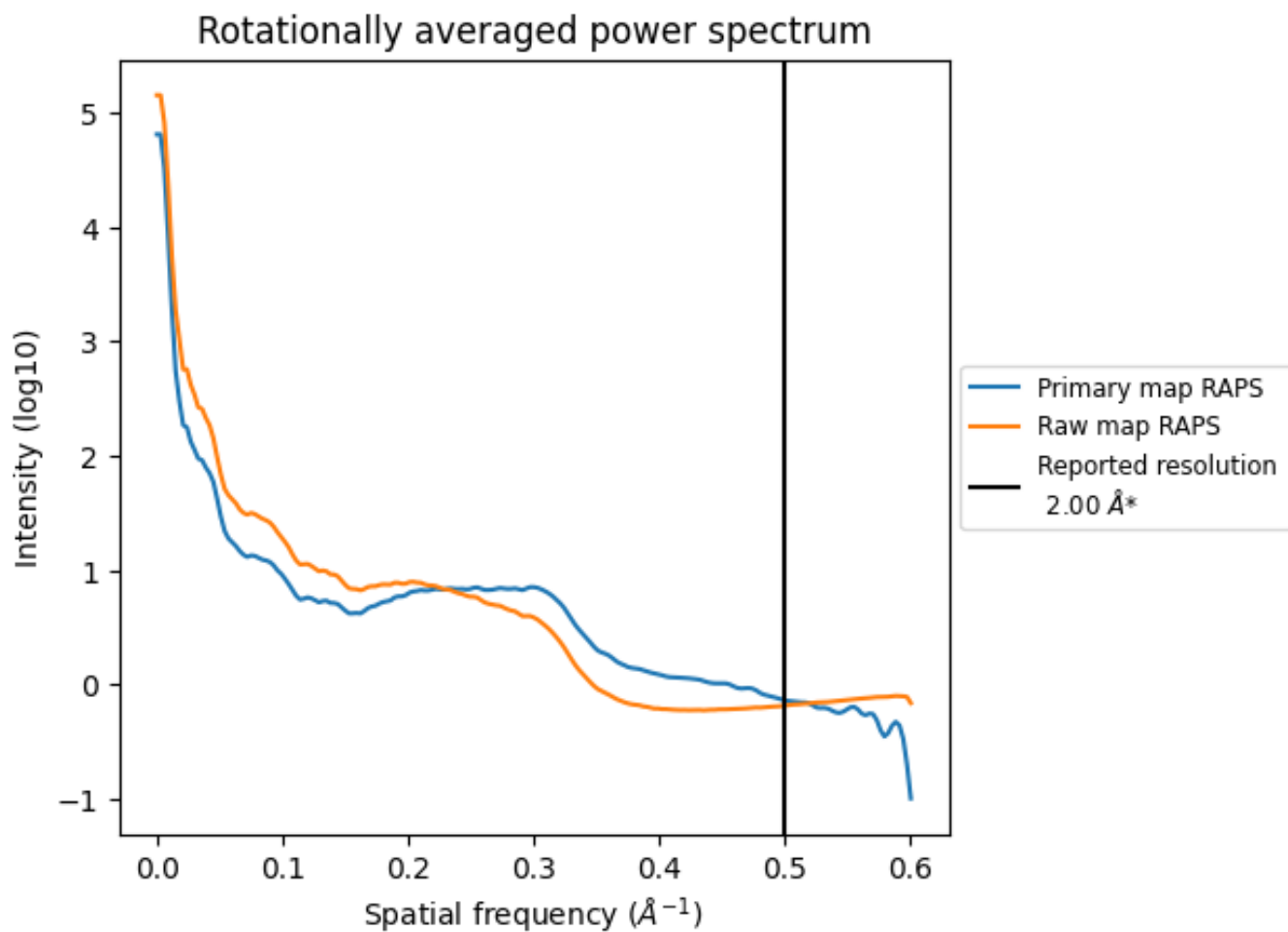
7.2 Volume estimate [\(i\)](#)



The volume at the recommended contour level is 105 nm³; this corresponds to an approximate mass of 94 kDa.

The volume estimate graph shows how the enclosed volume varies with the contour level. The recommended contour level is shown as a vertical line and the intersection between the line and the curve gives the volume of the enclosed surface at the given level.

7.3 Rotationally averaged power spectrum i

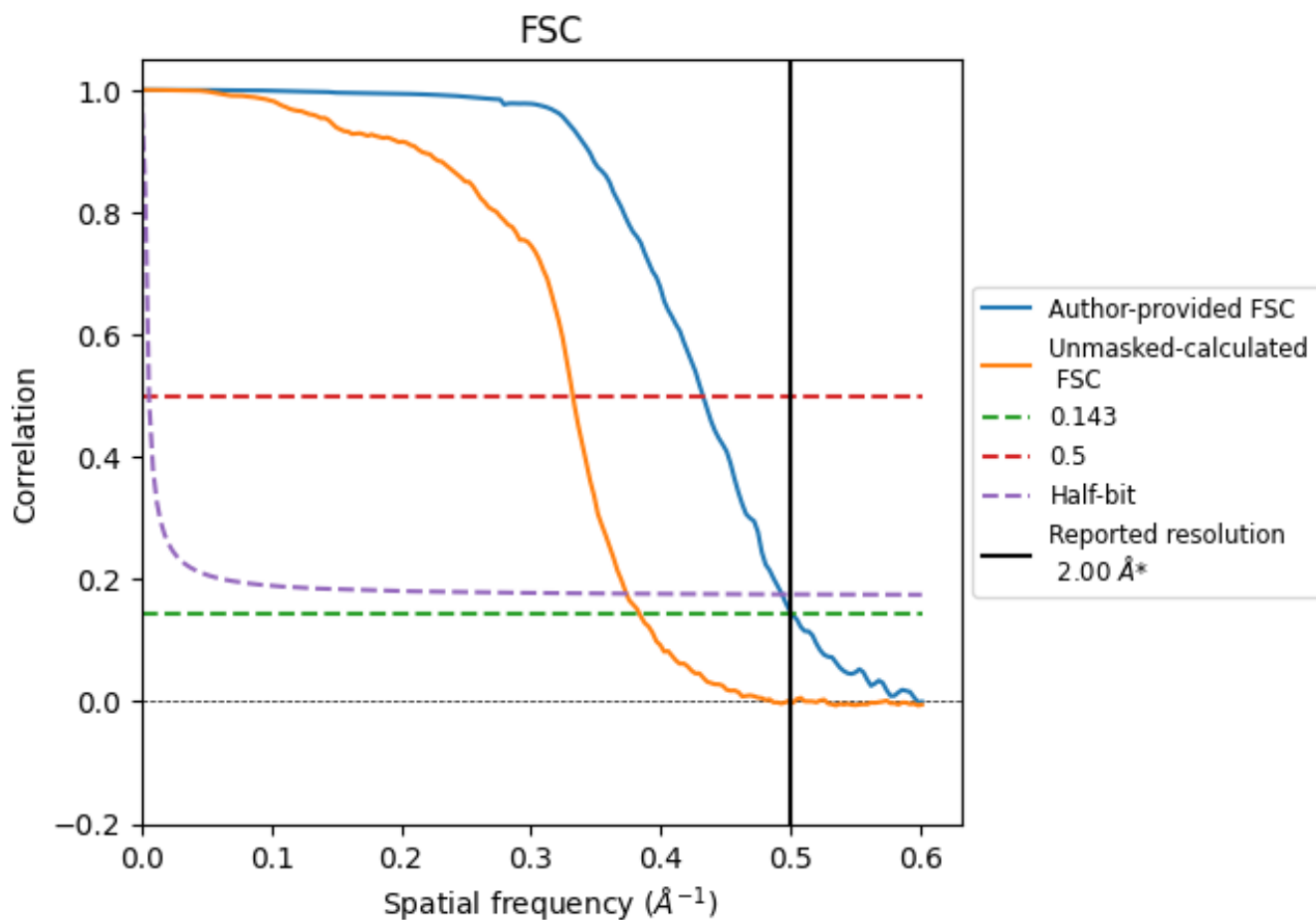


*Reported resolution corresponds to spatial frequency of 0.500 Å⁻¹

8 Fourier-Shell correlation [i](#)

Fourier-Shell Correlation (FSC) is the most commonly used method to estimate the resolution of single-particle and subtomogram-averaged maps. The shape of the curve depends on the imposed symmetry, mask and whether or not the two 3D reconstructions used were processed from a common reference. The reported resolution is shown as a black line. A curve is displayed for the half-bit criterion in addition to lines showing the 0.143 gold standard cut-off and 0.5 cut-off.

8.1 FSC [i](#)



*Reported resolution corresponds to spatial frequency of 0.500 Å⁻¹

8.2 Resolution estimates [i](#)

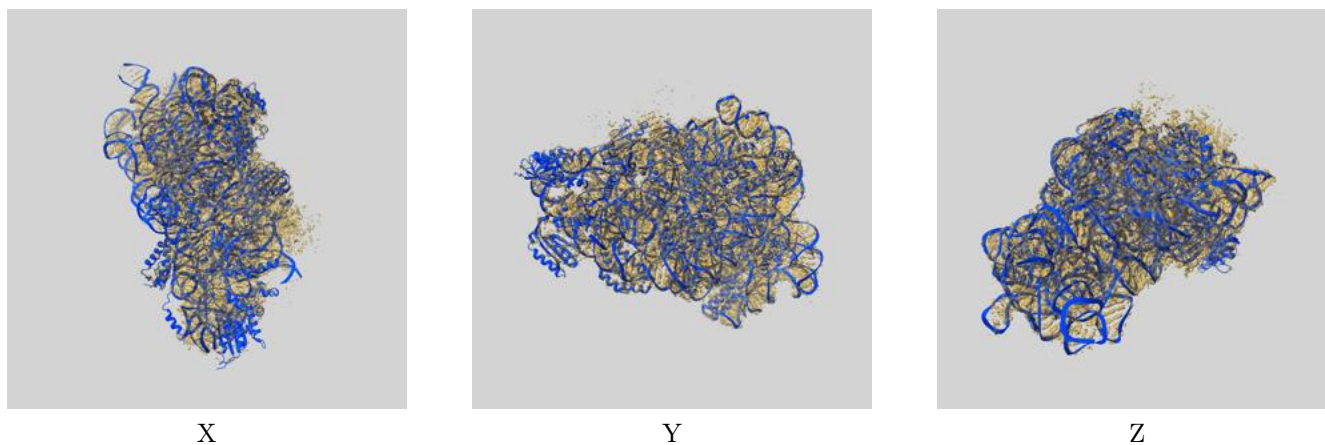
Resolution estimate (Å)	Estimation criterion (FSC cut-off)		
	0.143	0.5	Half-bit
Reported by author	2.00	-	-
Author-provided FSC curve	2.00	2.31	2.03
Unmasked-calculated*	2.61	3.01	2.68

*Resolution estimate based on FSC curve calculated by comparison of deposited half-maps. The value from deposited half-maps intersecting FSC 0.143 CUT-OFF 2.61 differs from the reported value 2.0 by more than 10 %

9 Map-model fit [i](#)

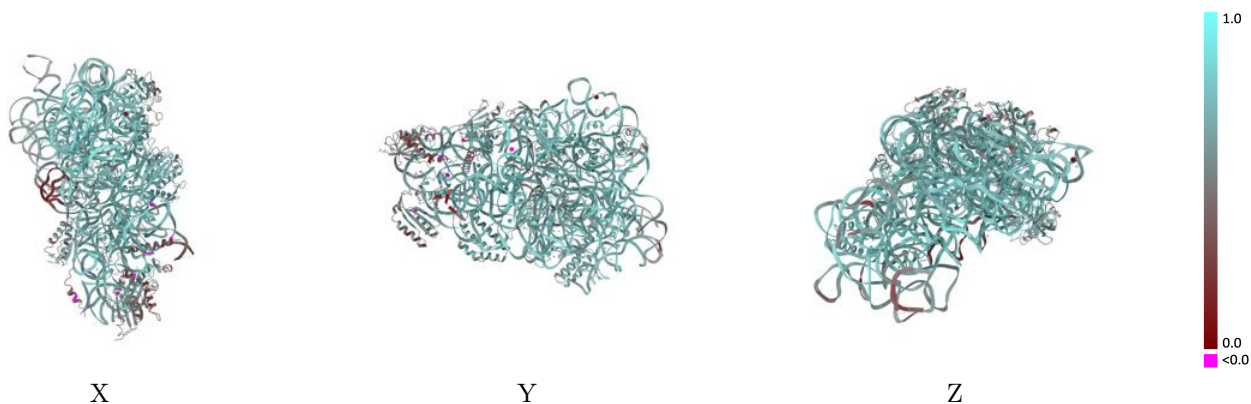
This section contains information regarding the fit between EMDB map EMD-50327 and PDB model 9FDA. Per-residue inclusion information can be found in section 3 on page 9.

9.1 Map-model overlay [i](#)



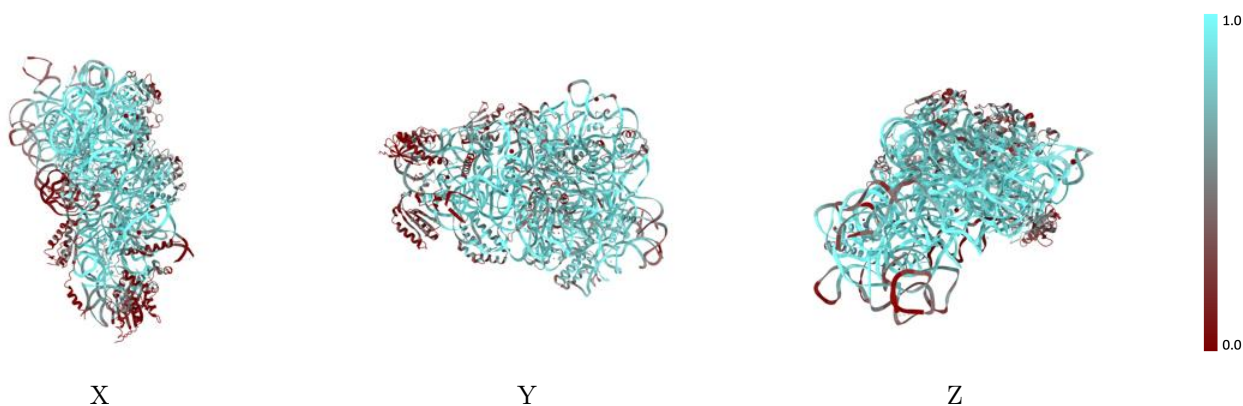
The images above show the 3D surface view of the map at the recommended contour level 0.017 at 50% transparency in yellow overlaid with a ribbon representation of the model coloured in blue. These images allow for the visual assessment of the quality of fit between the atomic model and the map.

9.2 Q-score mapped to coordinate model [i](#)



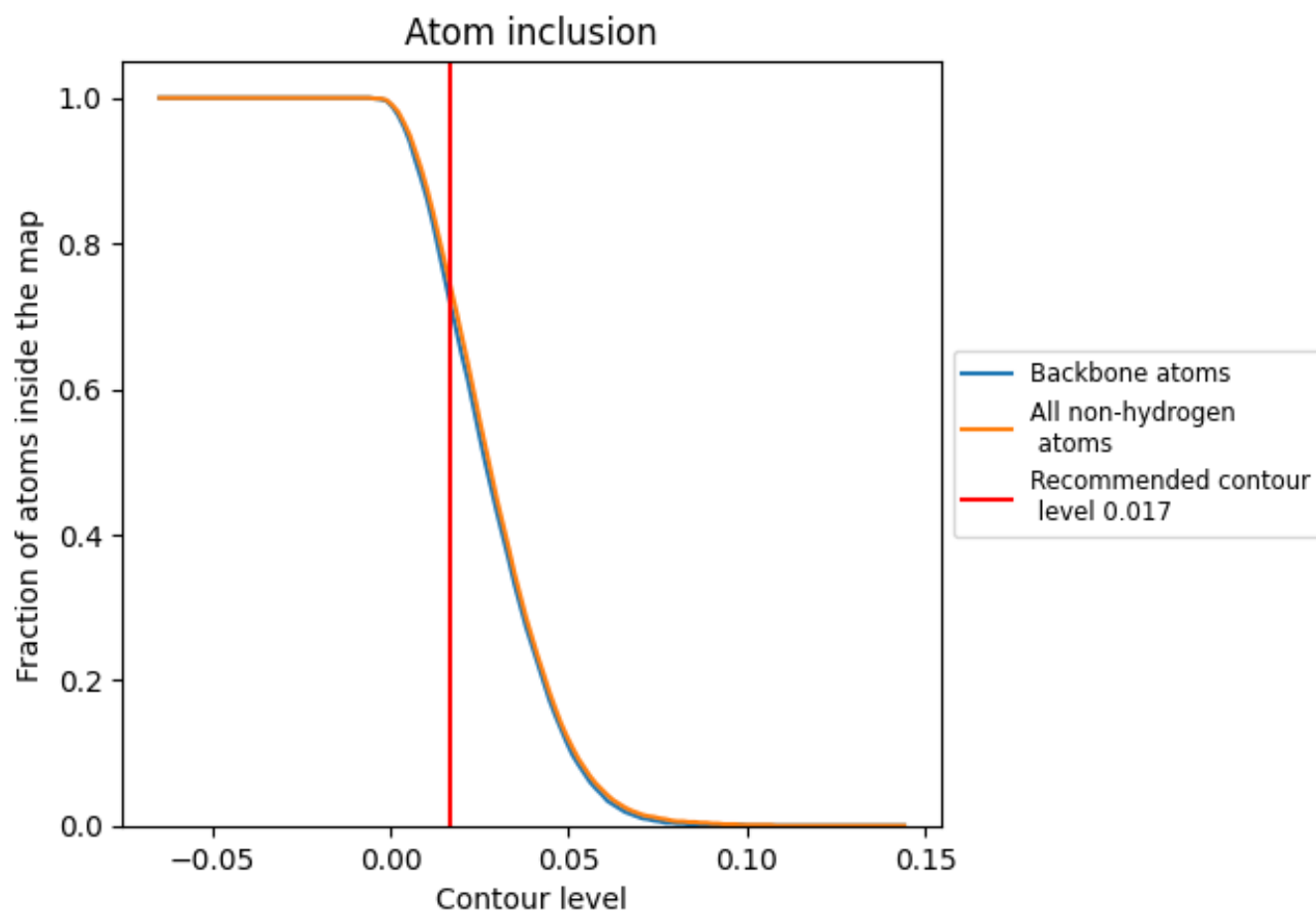
The images above show the model with each residue coloured according to its Q-score. This shows their resolvability in the map with higher Q-score values reflecting better resolvability. Please note: Q-score is calculating the resolvability of atoms, and thus high values are only expected at resolutions at which atoms can be resolved. Low Q-score values may therefore be expected for many entries.

9.3 Atom inclusion mapped to coordinate model [i](#)



The images above show the model with each residue coloured according to its atom inclusion. This shows to what extent they are inside the map at the recommended contour level (0.017).

































9.4 Atom inclusion [i](#)



At the recommended contour level, 71% of all backbone atoms, 74% of all non-hydrogen atoms, are inside the map.

9.5 Map-model fit summary

The table lists the average atom inclusion at the recommended contour level (0.017) and Q-score for the entire model and for each chain.

Chain	Atom inclusion	Q-score
All	 0.7380	 0.6700
B	 0.8250	 0.6930
D	 0.6330	 0.6390
E	 0.6810	 0.6630
F	 0.2310	 0.5180
H	 0.7510	 0.6890
I	 0.3320	 0.6020
J	 0.1990	 0.4830
K	 0.2870	 0.5370
L	 0.8330	 0.7350
O	 0.6590	 0.6490
P	 0.8810	 0.7520
Q	 0.7650	 0.6930
R	 0.4550	 0.5730
T	 0.7780	 0.7040
U	 0.1570	 0.4160

