



wwPDB X-ray Structure Validation Summary Report ⓘ

Mar 1, 2026 – 01:17 AM UTC

PDB ID : 5FCA / pdb_00005fca
Title : Murine SMPDL3A in presence of excess zinc
Authors : Gorelik, A.; Illes, K.; Superti-Furga, G.; Nagar, B.
Deposited on : 2015-12-15
Resolution : 1.92 Å(reported)

This is a wwPDB X-ray Structure Validation Summary Report for a publicly released PDB entry.

We welcome your comments at validation@mail.wwpdb.org

A user guide is available at

<https://www.wwpdb.org/validation/2017/XrayValidationReportHelp>

with specific help available everywhere you see the ⓘ symbol.

The types of validation reports are described at

<http://www.wwpdb.org/validation/2017/FAQs#types>.

The following versions of software and data (see [references ⓘ](#)) were used in the production of this report:

MolProbity : 4-5-2 with Phenix2.0
Mogul : 2022.3.0, CSD as543be (2022)
Xtriage (Phenix) : 2.0
EDS : 3.0
Percentile statistics : 20250101.v01 (using entries in the PDB archive January 1st 2025)
CCP4 : 9.0.010 (Gargrove)
Density-Fitness : 1.0.12
Ideal geometry (proteins) : Engh & Huber (2001)
Ideal geometry (DNA, RNA) : Parkinson et al. (1996)
Validation Pipeline (wwPDB-VP) : 2.49

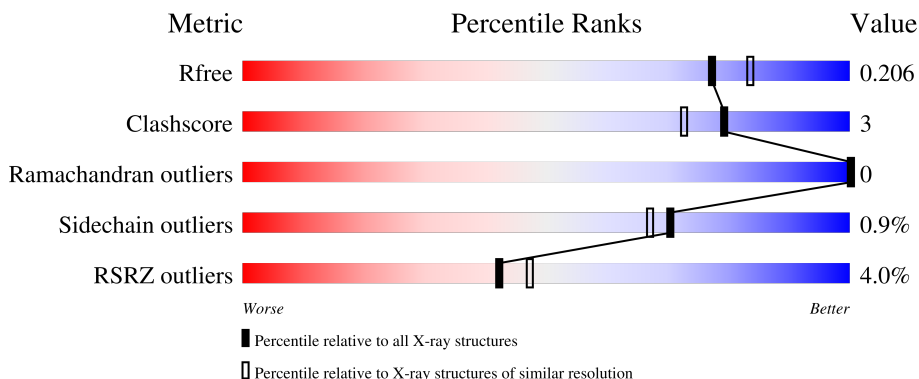
1 Overall quality at a glance

The following experimental techniques were used to determine the structure:

X-RAY DIFFRACTION

The reported resolution of this entry is 1.92 Å.

Percentile scores (ranging between 0-100) for global validation metrics of the entry are shown in the following graphic. The table shows the number of entries on which the scores are based.



Metric	Whole archive (#Entries)	Similar resolution (#Entries, resolution range(Å))
R_{free}	180053	1188 (1.92-1.92)
Clashscore	190562	1209 (1.92-1.92)
Ramachandran outliers	187476	1195 (1.92-1.92)
Sidechain outliers	187428	1195 (1.92-1.92)
RSRZ outliers	180081	1188 (1.92-1.92)

The table below summarises the geometric issues observed across the polymeric chains and their fit to the electron density. The red, orange, yellow and green segments of the lower bar indicate the fraction of residues that contain outliers for ≥ 3 , 2, 1 and 0 types of geometric quality criteria respectively. A grey segment represents the fraction of residues that are not modelled. The numeric value for each fraction is indicated below the corresponding segment, with a dot representing fractions $\leq 5\%$. The upper red bar (where present) indicates the fraction of residues that have poor fit to the electron density. The numeric value is given above the bar.

Mol	Chain	Length	Quality of chain
1	A	433	 3% 92% 6%
1	B	433	 5% 92% 6%
2	C	3	 33% 67%
2	F	3	 33% 67%
2	G	3	 67% 33%

Continued on next page...

Continued from previous page...

Mol	Chain	Length	Quality of chain
2	J	3	 33% 67%
3	D	2	 50% 50%
3	H	2	 100%
4	E	5	 20% 80%
4	I	5	 60% 40%

2 Entry composition [i](#)

There are 7 unique types of molecules in this entry. The entry contains 15306 atoms, of which 7178 are hydrogens and 0 are deuteriums.

In the tables below, the ZeroOcc column contains the number of atoms modelled with zero occupancy, the AltConf column contains the number of residues with at least one atom in alternate conformation and the Trace column contains the number of residues modelled with at most 2 atoms.

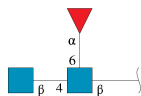
- Molecule 1 is a protein called Acid sphingomyelinase-like phosphodiesterase 3a.

Mol	Chain	Residues	Atoms						ZeroOcc	AltConf	Trace
			Total	C	H	N	O	S			
1	A	426	6840	2233	3382	560	644	21	0	15	0
1	B	426	6823	2229	3377	556	641	20	0	14	0

There are 20 discrepancies between the modelled and reference sequences:

Chain	Residue	Modelled	Actual	Comment	Reference
A	13	ASP	-	expression tag	UNP P70158
A	14	ARG	-	expression tag	UNP P70158
A	15	HIS	-	expression tag	UNP P70158
A	16	HIS	-	expression tag	UNP P70158
A	17	HIS	-	expression tag	UNP P70158
A	18	HIS	-	expression tag	UNP P70158
A	19	HIS	-	expression tag	UNP P70158
A	20	HIS	-	expression tag	UNP P70158
A	21	LYS	-	expression tag	UNP P70158
A	22	LEU	-	expression tag	UNP P70158
B	13	ASP	-	expression tag	UNP P70158
B	14	ARG	-	expression tag	UNP P70158
B	15	HIS	-	expression tag	UNP P70158
B	16	HIS	-	expression tag	UNP P70158
B	17	HIS	-	expression tag	UNP P70158
B	18	HIS	-	expression tag	UNP P70158
B	19	HIS	-	expression tag	UNP P70158
B	20	HIS	-	expression tag	UNP P70158
B	21	LYS	-	expression tag	UNP P70158
B	22	LEU	-	expression tag	UNP P70158

- Molecule 2 is an oligosaccharide called 2-acetamido-2-deoxy-beta-D-glucopyranose-(1-4)-[alpha-L-fucopyranose-(1-6)]2-acetamido-2-deoxy-beta-D-glucopyranose.



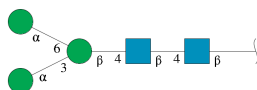
Mol	Chain	Residues	Atoms					ZeroOcc	AltConf	Trace
2	C	3	Total	C	H	N	O	0	0	0
			75	22	37	2	14			
2	F	3	Total	C	H	N	O	0	0	0
			75	22	37	2	14			
2	G	3	Total	C	H	N	O	0	0	0
			75	22	37	2	14			
2	J	3	Total	C	H	N	O	0	0	0
			75	22	37	2	14			

- Molecule 3 is an oligosaccharide called 2-acetamido-2-deoxy-beta-D-glucopyranose-(1-4)-2-acetamido-2-deoxy-beta-D-glucopyranose.



Mol	Chain	Residues	Atoms					ZeroOcc	AltConf	Trace
3	D	2	Total	C	H	N	O	0	0	0
			55	16	27	2	10			
3	H	2	Total	C	H	N	O	0	0	0
			54	16	26	2	10			

- Molecule 4 is an oligosaccharide called alpha-D-mannopyranose-(1-3)-[alpha-D-mannopyranose-(1-6)]beta-D-mannopyranose-(1-4)-2-acetamido-2-deoxy-beta-D-glucopyranose-(1-4)-2-acetamido-2-deoxy-beta-D-glucopyranose.



Mol	Chain	Residues	Atoms					ZeroOcc	AltConf	Trace
4	E	5	Total	C	H	N	O	0	0	0
			118	34	57	2	25			
4	I	5	Total	C	H	N	O	0	0	0
			118	34	57	2	25			

- Molecule 5 is ZINC ION (CCD ID: ZN) (formula: Zn).

Mol	Chain	Residues	Atoms		ZeroOcc	AltConf
5	A	5	Total	Zn	0	0
			5	5		
5	B	3	Total	Zn	0	0
			3	3		

- Molecule 6 is GLYCEROL (CCD ID: GOL) (formula: C₃H₈O₃).



Mol	Chain	Residues	Atoms				ZeroOcc	AltConf
6	A	1	Total	C	H	O	0	0
			14	3	8	3		
6	A	1	Total	C	H	O	0	0
			14	3	8	3		
6	A	1	Total	C	H	O	0	0
			14	3	8	3		
6	A	1	Total	C	H	O	0	0
			14	3	8	3		
6	A	1	Total	C	H	O	0	0
			14	3	8	3		
6	A	1	Total	C	H	O	0	0
			14	3	8	3		
6	B	1	Total	C	H	O	0	0
			14	3	8	3		
6	B	1	Total	C	H	O	0	0
			14	3	8	3		
6	B	1	Total	C	H	O	0	0
			14	3	8	3		

Continued on next page...

Continued from previous page...

Mol	Chain	Residues	Atoms				ZeroOcc	AltConf
6	B	1	Total	C	H	O	0	0
			14	3	8	3		
6	B	1	Total	C	H	O	0	0
			14	3	8	3		
6	B	1	Total	C	H	O	0	0
			14	3	8	3		

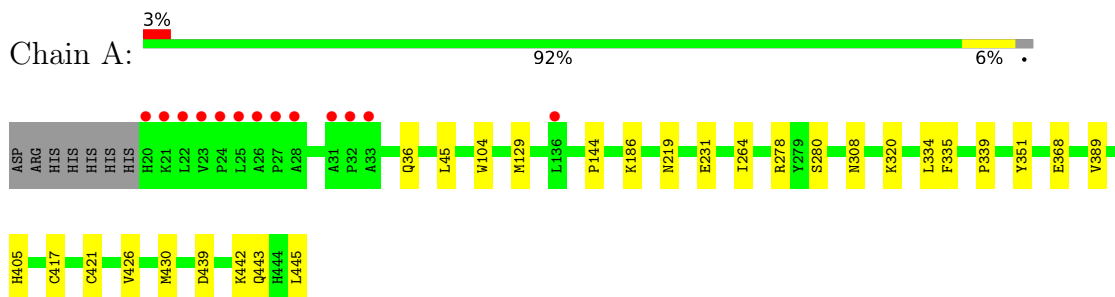
- Molecule 7 is water.

Mol	Chain	Residues	Atoms		ZeroOcc	AltConf
7	A	419	Total	O	0	0
			419	419		
7	B	389	Total	O	0	0
			389	389		

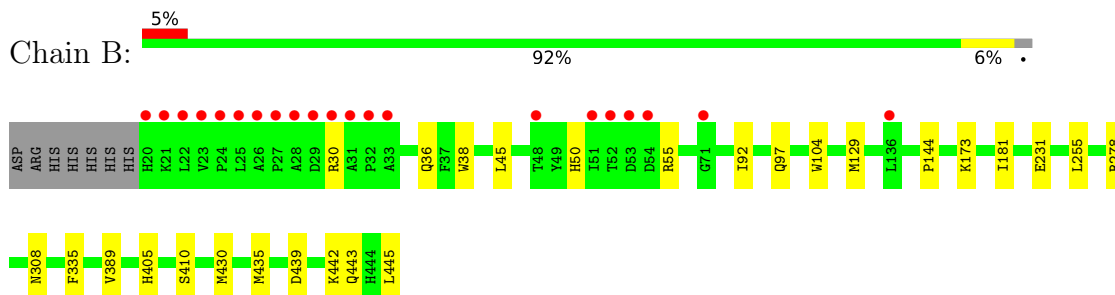
3 Residue-property plots [i](#)

These plots are drawn for all protein, RNA, DNA and oligosaccharide chains in the entry. The first graphic for a chain summarises the proportions of the various outlier classes displayed in the second graphic. The second graphic shows the sequence view annotated by issues in geometry and electron density. Residues are color-coded according to the number of geometric quality criteria for which they contain at least one outlier: green = 0, yellow = 1, orange = 2 and red = 3 or more. A red dot above a residue indicates a poor fit to the electron density ($RSRZ > 2$). Stretches of 2 or more consecutive residues without any outlier are shown as a green connector. Residues present in the sample, but not in the model, are shown in grey.

- Molecule 1: Acid sphingomyelinase-like phosphodiesterase 3a



- Molecule 1: Acid sphingomyelinase-like phosphodiesterase 3a



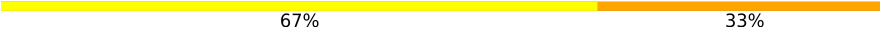
- Molecule 2: 2-acetamido-2-deoxy-beta-D-glucopyranose-(1-4)-[alpha-L-fucopyranose-(1-6)]2-acetamido-2-deoxy-beta-D-glucopyranose



- Molecule 2: 2-acetamido-2-deoxy-beta-D-glucopyranose-(1-4)-[alpha-L-fucopyranose-(1-6)]2-acetamido-2-deoxy-beta-D-glucopyranose




- Molecule 2: 2-acetamido-2-deoxy-beta-D-glucopyranose-(1-4)-[alpha-L-fucopyranose-(1-6)]2-acetamido-2-deoxy-beta-D-glucopyranose

Chain G:  67% 33%

MAG1
MAG2
FUC3

- Molecule 2: 2-acetamido-2-deoxy-beta-D-glucopyranose-(1-4)-[alpha-L-fucopyranose-(1-6)]2-acetamido-2-deoxy-beta-D-glucopyranose

Chain J:  33% 67%

MAG1
MAG2
FUC3

- Molecule 3: 2-acetamido-2-deoxy-beta-D-glucopyranose-(1-4)-2-acetamido-2-deoxy-beta-D-glucopyranose

Chain D:  50% 50%

MAG1
MAG2

- Molecule 3: 2-acetamido-2-deoxy-beta-D-glucopyranose-(1-4)-2-acetamido-2-deoxy-beta-D-glucopyranose

Chain H:  100%

MAG1
MAG2

- Molecule 4: alpha-D-mannopyranose-(1-3)-[alpha-D-mannopyranose-(1-6)]beta-D-mannopyranose-(1-4)-2-acetamido-2-deoxy-beta-D-glucopyranose-(1-4)-2-acetamido-2-deoxy-beta-D-glucopyranose

Chain E:  20% 80%

MAG1
MAG2
BMA3
MAN4
MAN5

- Molecule 4: alpha-D-mannopyranose-(1-3)-[alpha-D-mannopyranose-(1-6)]beta-D-mannopyranose-(1-4)-2-acetamido-2-deoxy-beta-D-glucopyranose-(1-4)-2-acetamido-2-deoxy-beta-D-glucopyranose

Chain I:  60% 40%

MAG1
MAG2
BMA3
MAN4
MAN5

4 Data and refinement statistics

Property	Value	Source
Space group	P 21 21 21	Depositor
Cell constants a, b, c, α , β , γ	80.14Å 123.59Å 131.61Å 90.00° 90.00° 90.00°	Depositor
Resolution (Å)	39.31 – 1.92 39.31 – 1.92	Depositor EDS
% Data completeness (in resolution range)	91.1 (39.31-1.92) 83.8 (39.31-1.92)	Depositor EDS
R_{merge}	(Not available)	Depositor
R_{sym}	(Not available)	Depositor
$\langle I/\sigma(I) \rangle$ ¹	0.41 (at 1.92Å)	Xtrriage
Refinement program	PHENIX (1.10.1_2155: ???)	Depositor
R, R_{free}	0.175 , 0.204 0.177 , 0.206	Depositor DCC
R_{free} test set	1994 reflections (2.14%)	wwPDB-VP
Wilson B-factor (Å ²)	32.0	Xtrriage
Anisotropy	0.306	Xtrriage
Bulk solvent k_{sol} (e/Å ³), B_{sol} (Å ²)	0.40 , 45.9	EDS
L-test for twinning ²	$\langle L \rangle = 0.47$, $\langle L^2 \rangle = 0.30$	Xtrriage
Estimated twinning fraction	No twinning to report.	Xtrriage
F_o, F_c correlation	0.97	EDS
Total number of atoms	15306	wwPDB-VP
Average B, all atoms (Å ²)	52.0	wwPDB-VP

Xtrriage's analysis on translational NCS is as follows: *The analyses of the Patterson function reveals a significant off-origin peak that is 51.72 % of the origin peak, indicating pseudo-translational symmetry. The chance of finding a peak of this or larger height randomly in a structure without pseudo-translational symmetry is equal to 5.3874e-05. The detected translational NCS is most likely also responsible for the elevated intensity ratio.*

¹Intensities estimated from amplitudes.

²Theoretical values of $\langle |L| \rangle$, $\langle L^2 \rangle$ for acentric reflections are 0.5, 0.333 respectively for untwinned datasets, and 0.375, 0.2 for perfectly twinned datasets.

5 Model quality

5.1 Standard geometry

Bond lengths and bond angles in the following residue types are not validated in this section: MAN, ZN, NAG, GOL, BMA, FUC

The Z score for a bond length (or angle) is the number of standard deviations the observed value is removed from the expected value. A bond length (or angle) with $|Z| > 5$ is considered an outlier worth inspection. RMSZ is the root-mean-square of all Z scores of the bond lengths (or angles).

Mol	Chain	Bond lengths		Bond angles	
		RMSZ	# Z >5	RMSZ	# Z >5
1	A	0.47	0/3604	0.57	0/4917
1	B	0.47	0/3586	0.58	0/4894
All	All	0.47	0/7190	0.57	0/9811

There are no bond length outliers.

There are no bond angle outliers.

There are no chirality outliers.

There are no planarity outliers.

5.2 Too-close contacts

In the following table, the Non-H and H(model) columns list the number of non-hydrogen atoms and hydrogen atoms in the chain respectively. The H(added) column lists the number of hydrogen atoms added and optimized by MolProbity. The Clashes column lists the number of clashes within the asymmetric unit, whereas Symm-Clashes lists symmetry-related clashes.

Mol	Chain	Non-H	H(model)	H(added)	Clashes	Symm-Clashes
1	A	3458	3382	3412	23	0
1	B	3446	3377	3404	16	0
2	C	38	37	34	0	0
2	F	38	37	34	0	0
2	G	38	37	34	1	0
2	J	38	37	34	0	0
3	D	28	27	25	0	0
3	H	28	26	25	0	0
4	E	61	57	52	0	0
4	I	61	57	52	0	0
5	A	5	0	0	0	0

Continued on next page...

Continued from previous page...

Mol	Chain	Non-H	H(model)	H(added)	Clashes	Symm-Clashes
5	B	3	0	0	0	0
6	A	36	48	48	0	0
6	B	42	56	56	2	0
7	A	419	0	0	8	2
7	B	389	0	0	4	2
All	All	8128	7178	7210	39	2

The all-atom clashscore is defined as the number of clashes found per 1000 atoms (including hydrogen atoms). The all-atom clashscore for this structure is 3.

The worst 5 of 39 close contacts within the same asymmetric unit are listed below, sorted by their clash magnitude.

Atom-1	Atom-2	Interatomic distance (Å)	Clash overlap (Å)
1:B:435[B]:MET:SD	7:B:977:HOH:O	2.18	1.01
1:B:231:GLU:OE2	1:B:278:ARG:NH2	2.11	0.83
1:A:439[A]:ASP:OD1	7:A:601:HOH:O	1.98	0.80
1:A:320[A]:LYS:NZ	7:A:606:HOH:O	2.30	0.65
1:B:97:GLN:O	6:B:523:GOL:O1	2.16	0.63

All (2) symmetry-related close contacts are listed below. The label for Atom-2 includes the symmetry operator and encoded unit-cell translations to be applied.

Atom-1	Atom-2	Interatomic distance (Å)	Clash overlap (Å)
7:A:967:HOH:O	7:B:939:HOH:O[4_545]	2.15	0.05
7:A:940:HOH:O	7:B:838:HOH:O[3_554]	2.17	0.03

5.3 Torsion angles [i](#)

5.3.1 Protein backbone [i](#)

In the following table, the Percentiles column shows the percent Ramachandran outliers of the chain as a percentile score with respect to all X-ray entries followed by that with respect to entries of similar resolution.

The Analysed column shows the number of residues for which the backbone conformation was analysed, and the total number of residues.

Mol	Chain	Analysed	Favoured	Allowed	Outliers	Percentiles
1	A	440/433 (102%)	419 (95%)	21 (5%)	0	100 100

Continued on next page...

Continued from previous page...

Mol	Chain	Analysed	Favoured	Allowed	Outliers	Percentiles	
1	B	438/433 (101%)	418 (95%)	20 (5%)	0	100	100
All	All	878/866 (101%)	837 (95%)	41 (5%)	0	100	100

There are no Ramachandran outliers to report.

5.3.2 Protein sidechains [i](#)

In the following table, the Percentiles column shows the percent sidechain outliers of the chain as a percentile score with respect to all X-ray entries followed by that with respect to entries of similar resolution.

The Analysed column shows the number of residues for which the sidechain conformation was analysed, and the total number of residues.

Mol	Chain	Analysed	Rotameric	Outliers	Percentiles	
1	A	393/384 (102%)	390 (99%)	3 (1%)	73	71
1	B	391/384 (102%)	387 (99%)	4 (1%)	68	64
All	All	784/768 (102%)	777 (99%)	7 (1%)	70	67

5 of 7 residues with a non-rotameric sidechain are listed below:

Mol	Chain	Res	Type
1	B	30	ARG
1	B	50	HIS
1	B	308	ASN
1	B	55	ARG
1	A	308	ASN

Sometimes sidechains can be flipped to improve hydrogen bonding and reduce clashes. 5 of 8 such sidechains are listed below:

Mol	Chain	Res	Type
1	B	286	GLN
1	B	208	ASN
1	A	303	ASN
1	A	286	GLN
1	A	336	GLN

5.3.3 RNA [i](#)

There are no RNA molecules in this entry.

5.4 Non-standard residues in protein, DNA, RNA chains [i](#)

There are no non-standard protein/DNA/RNA residues in this entry.

5.5 Carbohydrates [i](#)

26 monosaccharides are modelled in this entry.

In the following table, the Counts columns list the number of bonds (or angles) for which Mogul statistics could be retrieved, the number of bonds (or angles) that are observed in the model and the number of bonds (or angles) that are defined in the Chemical Component Dictionary. The Link column lists molecule types, if any, to which the group is linked. The Z score for a bond length (or angle) is the number of standard deviations the observed value is removed from the expected value. A bond length (or angle) with $|Z| > 2$ is considered an outlier worth inspection. RMSZ is the root-mean-square of all Z scores of the bond lengths (or angles).

Mol	Type	Chain	Res	Link	Bond lengths			Bond angles		
					Counts	RMSZ	# Z > 2	Counts	RMSZ	# Z > 2
2	NAG	C	1	1,2	14,14,15	0.60	0	17,19,21	0.81	0
2	NAG	C	2	2	14,14,15	0.70	0	17,19,21	1.50	3 (17%)
2	FUC	C	3	2	10,10,11	1.45	1 (10%)	14,14,16	1.20	2 (14%)
3	NAG	D	1	1,3	14,14,15	0.63	0	17,19,21	0.73	0
3	NAG	D	2	3	14,14,15	0.76	0	17,19,21	1.32	2 (11%)
4	NAG	E	1	4,1	14,14,15	0.35	0	17,19,21	0.60	0
4	NAG	E	2	4	14,14,15	0.49	0	17,19,21	0.65	1 (5%)
4	BMA	E	3	4	11,11,12	0.84	0	15,15,17	1.13	1 (6%)
4	MAN	E	4	4	11,11,12	1.18	2 (18%)	15,15,17	1.39	1 (6%)
4	MAN	E	5	4	11,11,12	1.32	2 (18%)	15,15,17	1.75	3 (20%)
2	NAG	F	1	1,2	14,14,15	0.93	1 (7%)	17,19,21	0.53	0
2	NAG	F	2	2	14,14,15	0.35	0	17,19,21	0.61	0
2	FUC	F	3	2	10,10,11	1.49	3 (30%)	14,14,16	0.96	0
2	NAG	G	1	1,2	14,14,15	0.73	1 (7%)	17,19,21	0.92	1 (5%)
2	NAG	G	2	2	14,14,15	0.63	0	17,19,21	1.40	2 (11%)
2	FUC	G	3	2	10,10,11	1.32	1 (10%)	14,14,16	1.24	1 (7%)
3	NAG	H	1	1,3	14,14,15	0.32	0	17,19,21	0.68	0
3	NAG	H	2	3	14,14,15	0.29	0	17,19,21	0.54	0
4	NAG	I	1	4,1	14,14,15	0.29	0	17,19,21	0.61	0
4	NAG	I	2	4	14,14,15	0.44	0	17,19,21	0.56	0

Mol	Type	Chain	Res	Link	Bond lengths			Bond angles		
					Counts	RMSZ	# Z > 2	Counts	RMSZ	# Z > 2
4	BMA	I	3	4	11,11,12	0.63	0	15,15,17	0.65	0
4	MAN	I	4	4	11,11,12	1.17	1 (9%)	15,15,17	1.33	1 (6%)
4	MAN	I	5	4	11,11,12	1.33	1 (9%)	15,15,17	1.41	1 (6%)
2	NAG	J	1	1,2	14,14,15	1.09	1 (7%)	17,19,21	0.85	1 (5%)
2	NAG	J	2	2	14,14,15	0.35	0	17,19,21	0.52	0
2	FUC	J	3	2	10,10,11	1.59	1 (10%)	14,14,16	0.97	1 (7%)

In the following table, the Chirals column lists the number of chiral outliers, the number of chiral centers analysed, the number of these observed in the model and the number defined in the Chemical Component Dictionary. Similar counts are reported in the Torsion and Rings columns. '-' means no outliers of that kind were identified.

Mol	Type	Chain	Res	Link	Chirals	Torsions	Rings
2	NAG	C	1	1,2	-	0/6/23/26	0/1/1/1
2	NAG	C	2	2	-	1/6/23/26	0/1/1/1
2	FUC	C	3	2	-	-	0/1/1/1
3	NAG	D	1	1,3	-	2/6/23/26	0/1/1/1
3	NAG	D	2	3	-	4/6/23/26	0/1/1/1
4	NAG	E	1	4,1	-	0/6/23/26	0/1/1/1
4	NAG	E	2	4	-	2/6/23/26	0/1/1/1
4	BMA	E	3	4	-	0/2/19/22	0/1/1/1
4	MAN	E	4	4	-	2/2/19/22	1/1/1/1
4	MAN	E	5	4	-	1/2/19/22	0/1/1/1
2	NAG	F	1	1,2	-	0/6/23/26	0/1/1/1
2	NAG	F	2	2	-	0/6/23/26	0/1/1/1
2	FUC	F	3	2	-	-	0/1/1/1
2	NAG	G	1	1,2	-	0/6/23/26	0/1/1/1
2	NAG	G	2	2	-	3/6/23/26	0/1/1/1
2	FUC	G	3	2	-	-	0/1/1/1
3	NAG	H	1	1,3	-	2/6/23/26	0/1/1/1
3	NAG	H	2	3	-	2/6/23/26	0/1/1/1
4	NAG	I	1	4,1	-	0/6/23/26	0/1/1/1
4	NAG	I	2	4	-	2/6/23/26	0/1/1/1
4	BMA	I	3	4	-	2/2/19/22	0/1/1/1
4	MAN	I	4	4	-	2/2/19/22	0/1/1/1
4	MAN	I	5	4	-	0/2/19/22	0/1/1/1
2	NAG	J	1	1,2	-	2/6/23/26	0/1/1/1
2	NAG	J	2	2	-	2/6/23/26	0/1/1/1
2	FUC	J	3	2	-	-	0/1/1/1

The worst 5 of 15 bond length outliers are listed below:

Mol	Chain	Res	Type	Atoms	Z	Observed(Å)	Ideal(Å)
2	J	1	NAG	O5-C1	-3.90	1.37	1.43
2	J	3	FUC	C1-C2	3.30	1.60	1.52
2	F	1	NAG	O5-C1	-3.28	1.38	1.43
2	C	3	FUC	C1-C2	3.27	1.60	1.52
4	E	5	MAN	C1-C2	3.24	1.59	1.52

The worst 5 of 21 bond angle outliers are listed below:

Mol	Chain	Res	Type	Atoms	Z	Observed(°)	Ideal(°)
4	E	4	MAN	C1-O5-C5	4.52	118.24	112.19
2	G	2	NAG	C1-O5-C5	4.31	117.96	112.19
4	E	5	MAN	C1-O5-C5	4.10	117.68	112.19
4	I	5	MAN	C1-O5-C5	4.02	117.58	112.19
4	I	4	MAN	C1-O5-C5	3.92	117.44	112.19

There are no chirality outliers.

5 of 29 torsion outliers are listed below:

Mol	Chain	Res	Type	Atoms
2	C	2	NAG	C3-C2-N2-C7
2	G	2	NAG	C3-C2-N2-C7
3	H	2	NAG	C1-C2-N2-C7
2	G	2	NAG	O5-C5-C6-O6
2	J	2	NAG	O5-C5-C6-O6

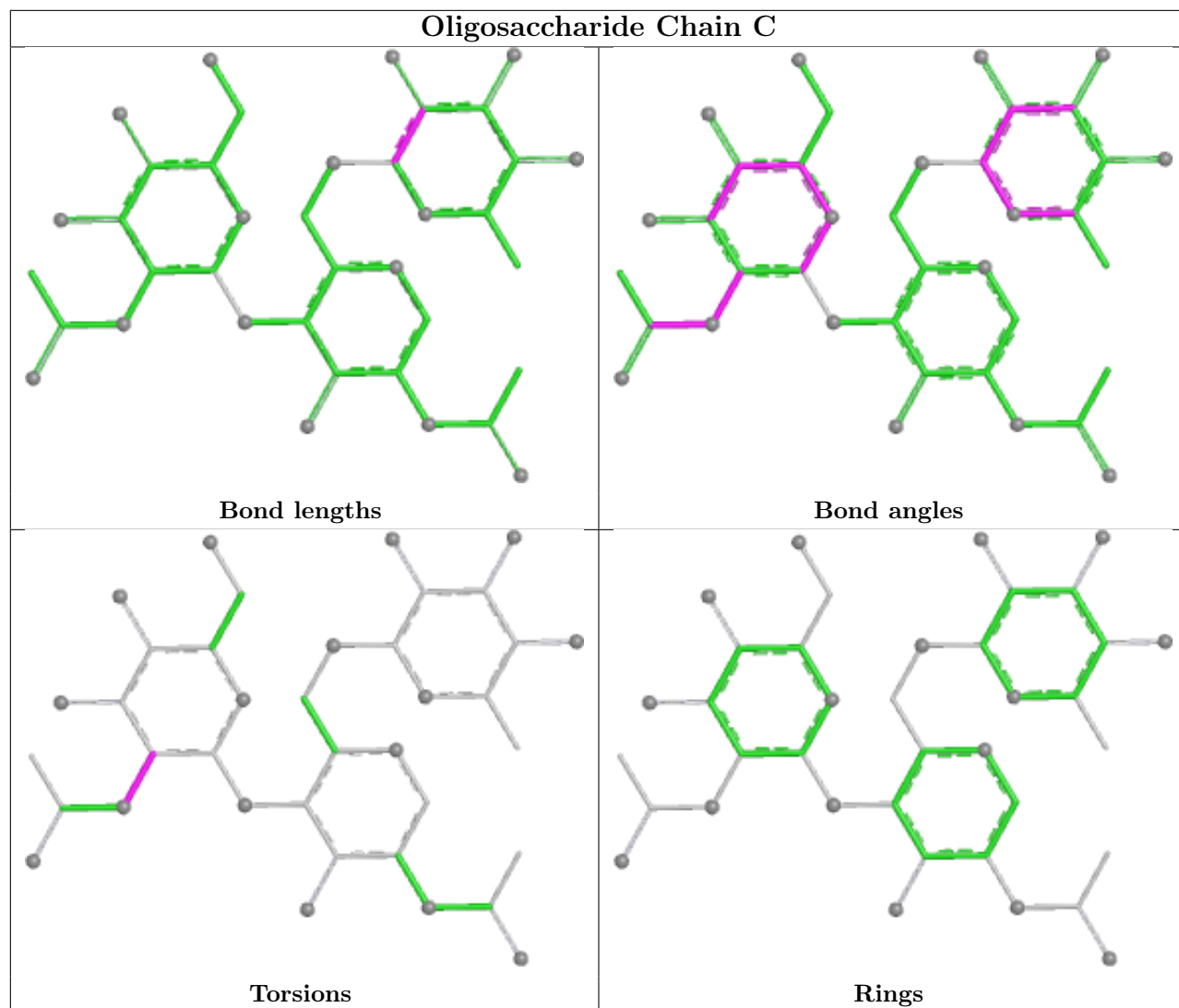
All (1) ring outliers are listed below:

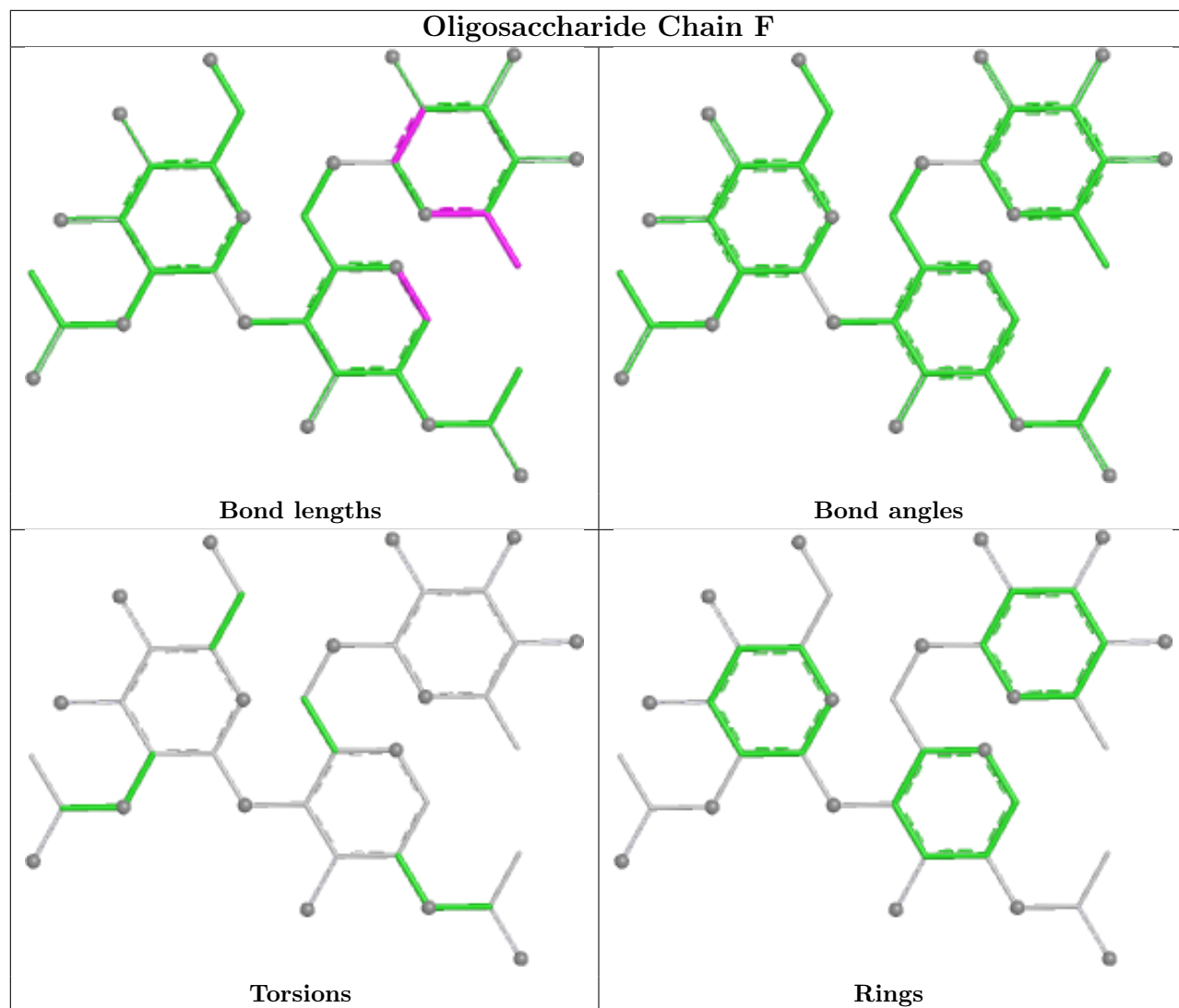
Mol	Chain	Res	Type	Atoms
4	E	4	MAN	C1-C2-C3-C4-C5-O5

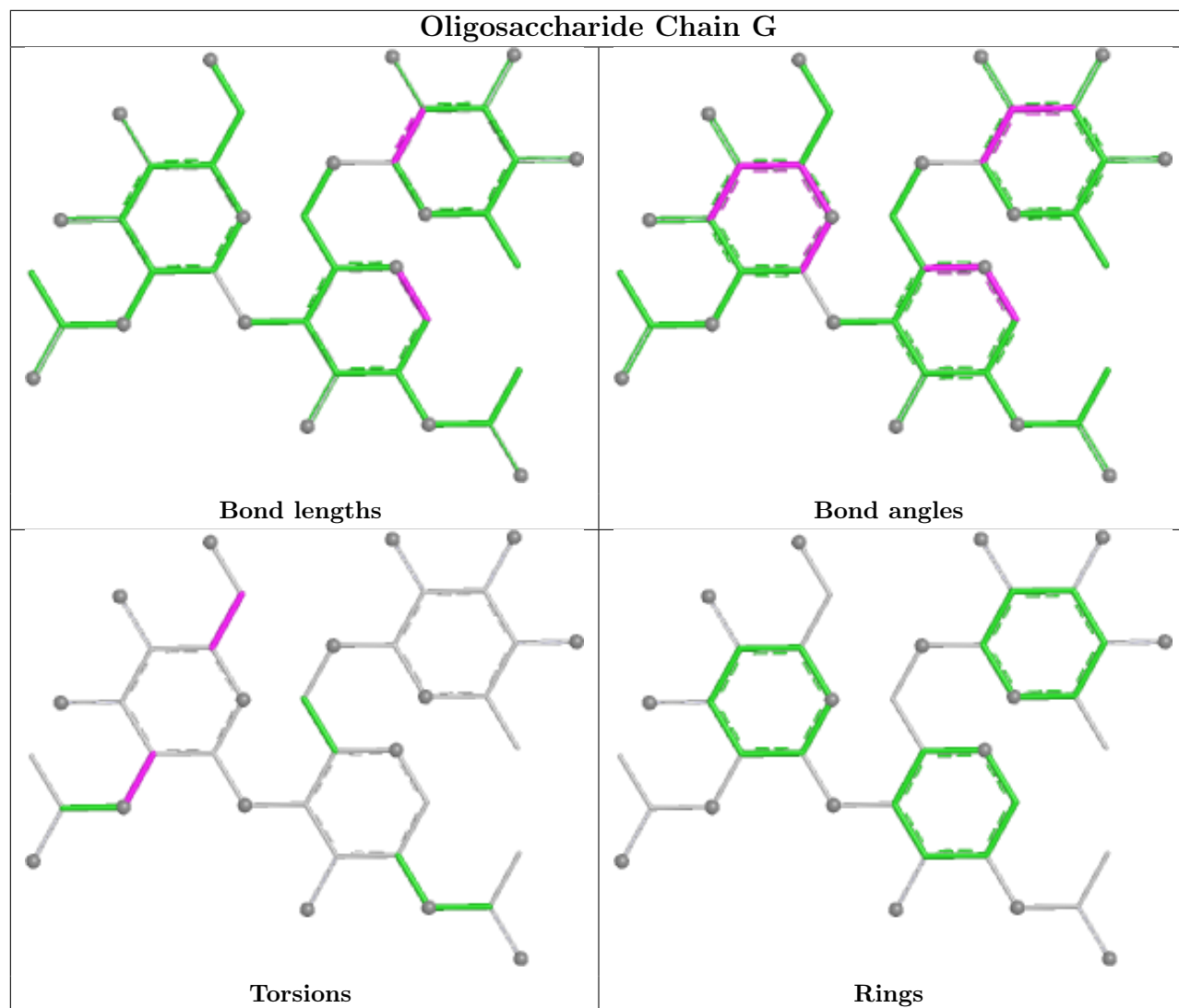
1 monomer is involved in 1 short contact:

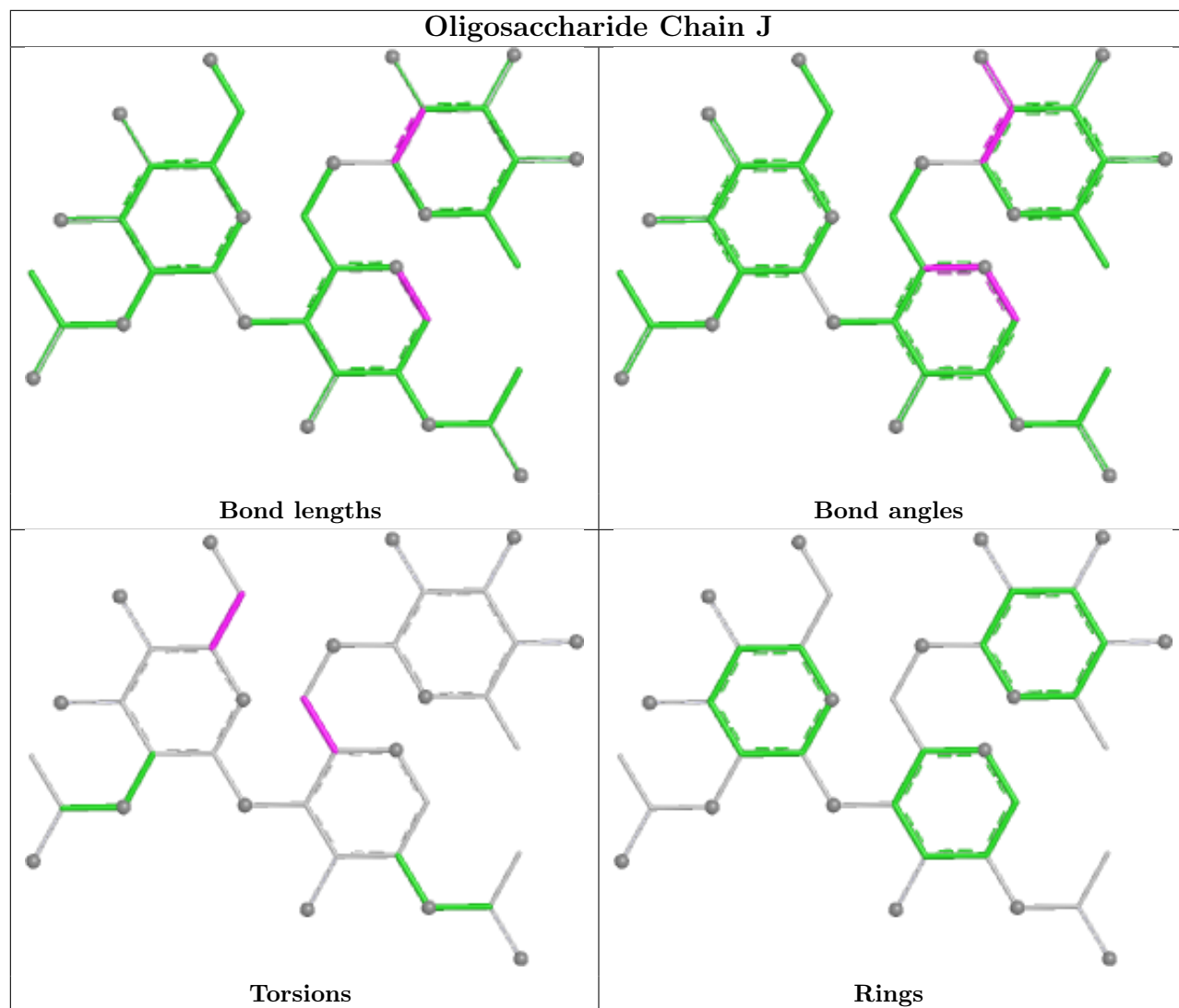
Mol	Chain	Res	Type	Clashes	Symm-Clashes
2	G	2	NAG	1	0

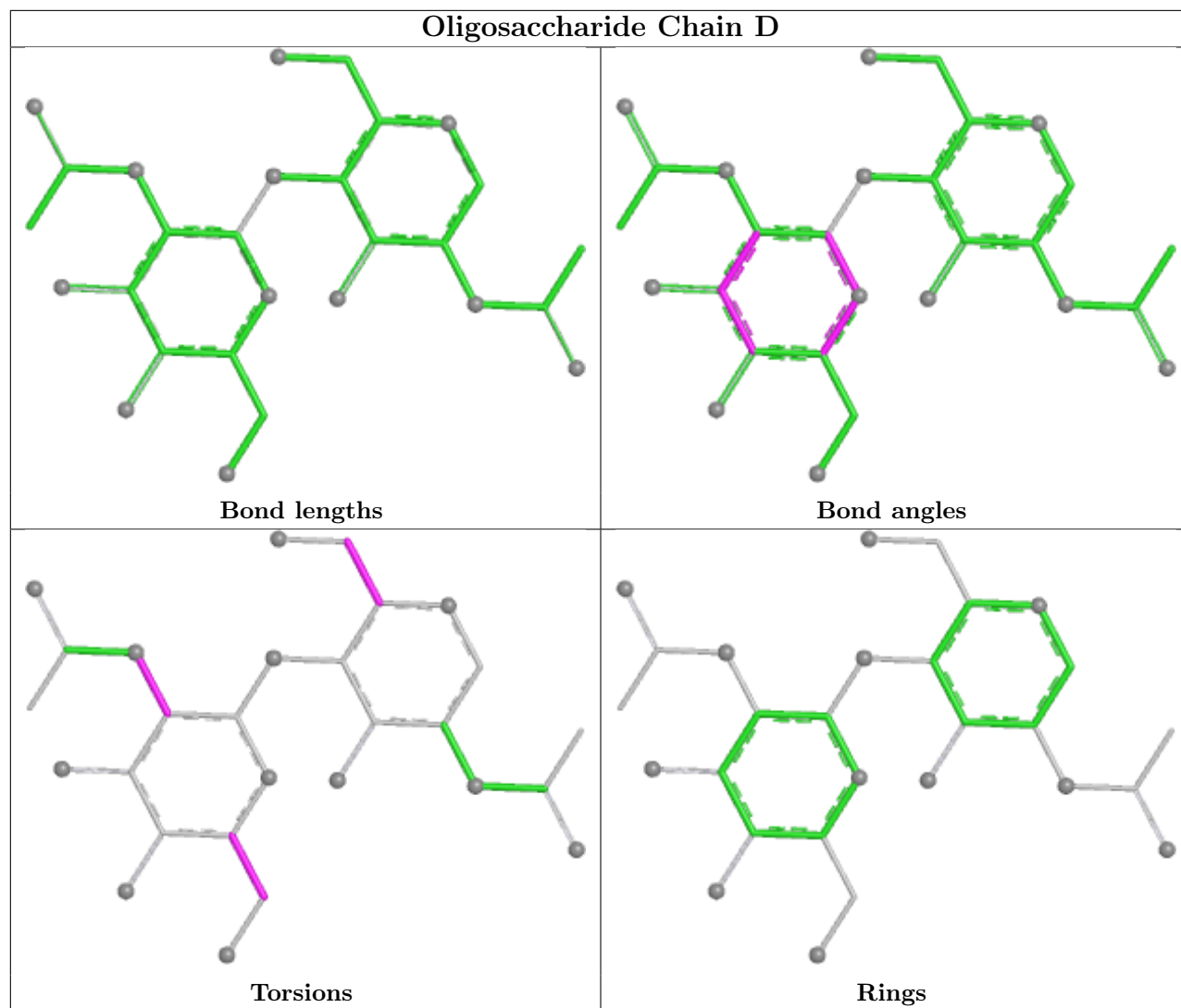
The following is a two-dimensional graphical depiction of Mogul quality analysis of bond lengths, bond angles, torsion angles, and ring geometry for oligosaccharide.

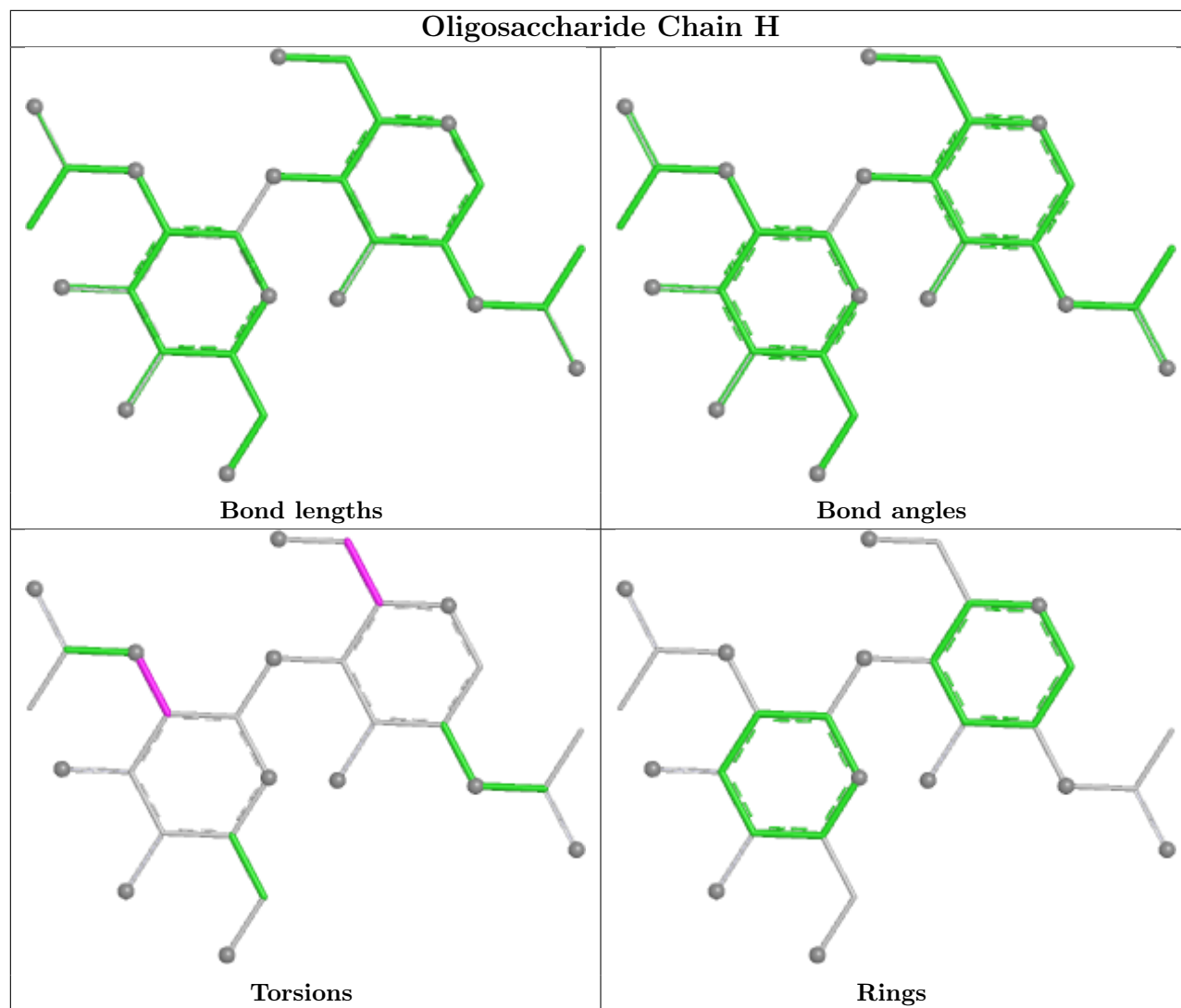


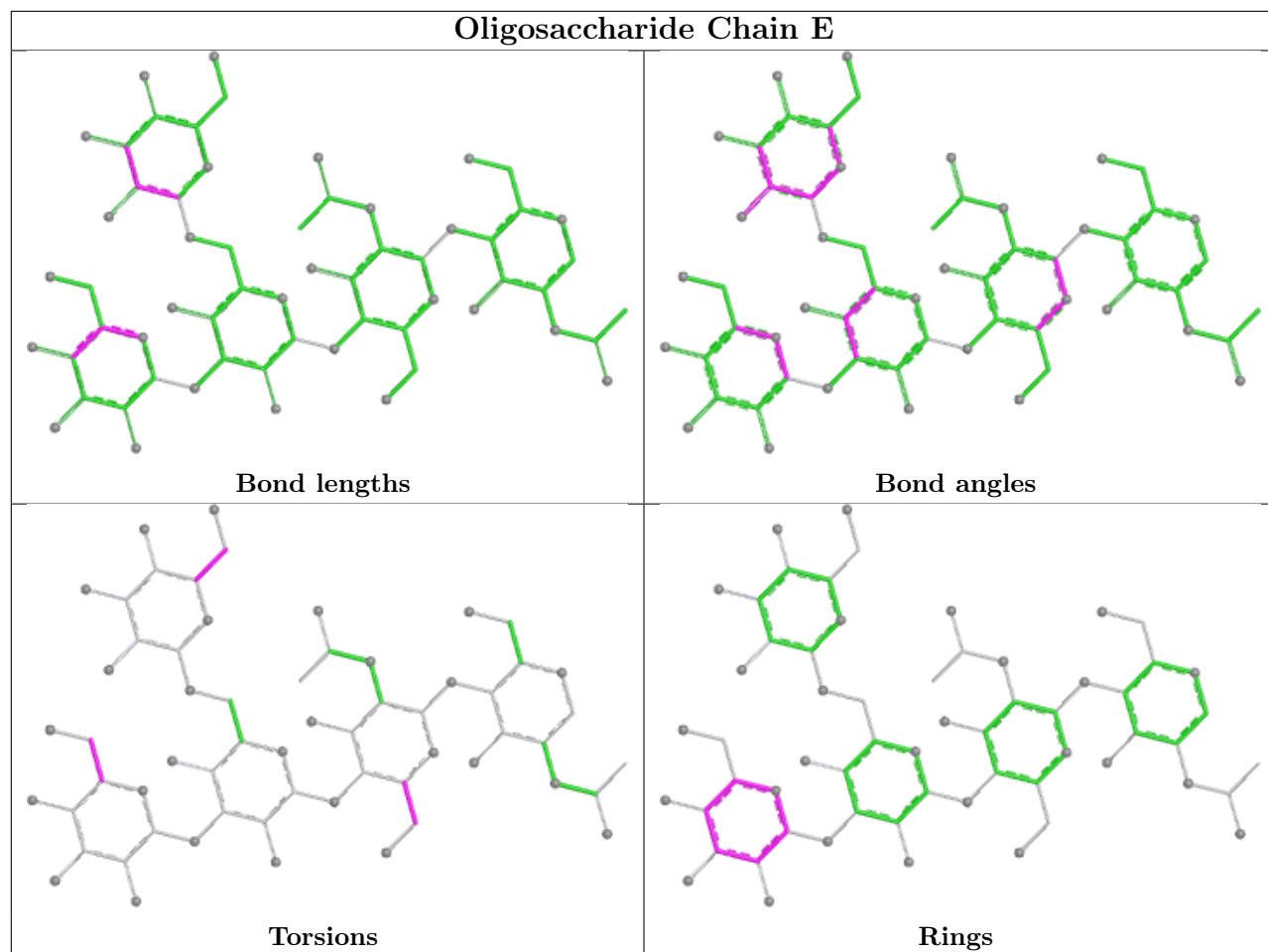


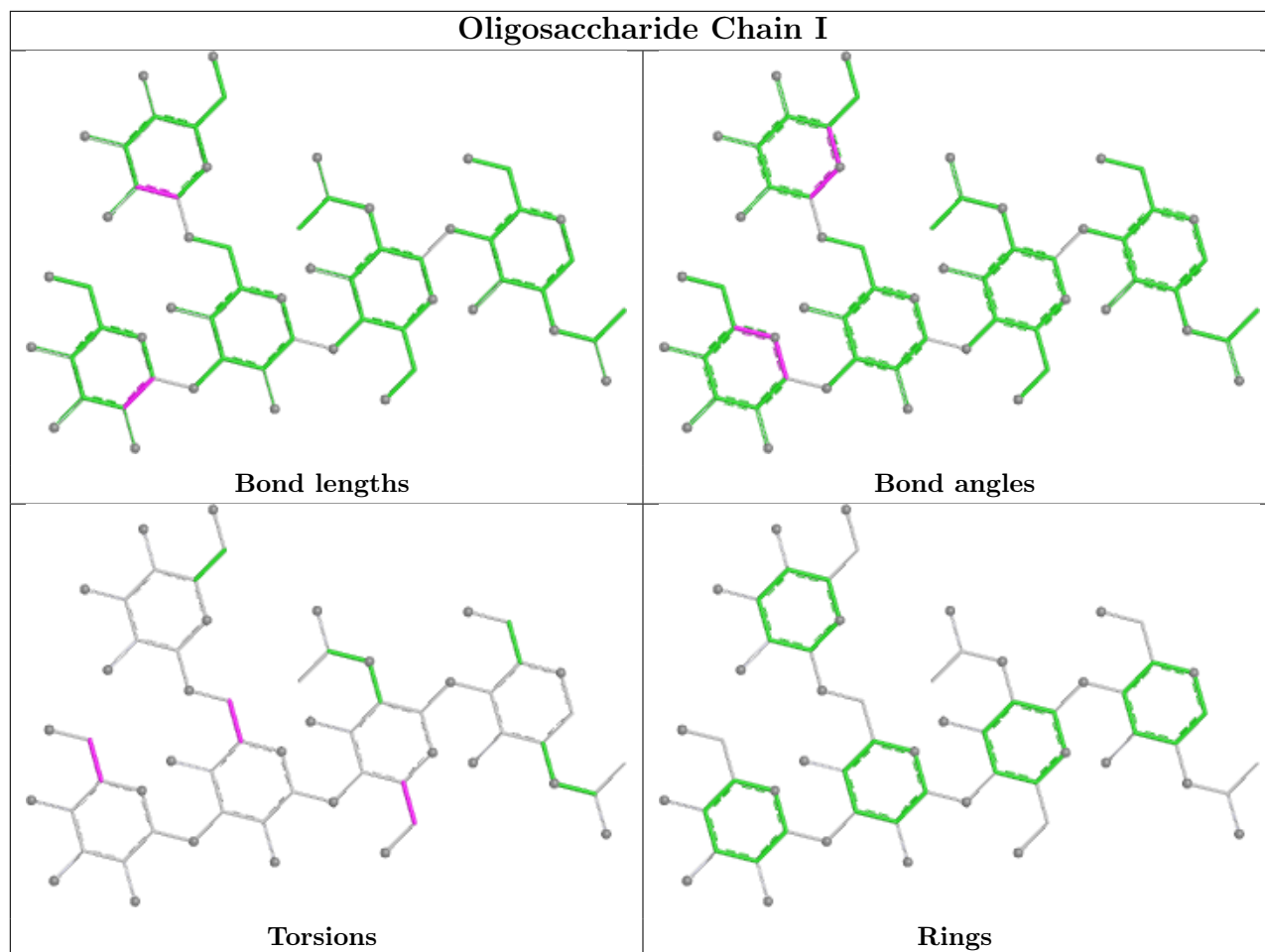












5.6 Ligand geometry [i](#)

Of 21 ligands modelled in this entry, 8 are monoatomic - leaving 13 for Mogul analysis.

In the following table, the Counts columns list the number of bonds (or angles) for which Mogul statistics could be retrieved, the number of bonds (or angles) that are observed in the model and the number of bonds (or angles) that are defined in the Chemical Component Dictionary. The Link column lists molecule types, if any, to which the group is linked. The Z score for a bond length (or angle) is the number of standard deviations the observed value is removed from the expected value. A bond length (or angle) with $|Z| > 2$ is considered an outlier worth inspection. RMSZ is the root-mean-square of all Z scores of the bond lengths (or angles).

Mol	Type	Chain	Res	Link	Bond lengths			Bond angles		
					Counts	RMSZ	$\# Z > 2$	Counts	RMSZ	$\# Z > 2$
6	GOL	B	518	-	5,5,5	0.37	0	5,5,5	0.39	0
6	GOL	A	518	-	5,5,5	0.27	0	5,5,5	0.60	0
6	GOL	A	521	-	5,5,5	0.44	0	5,5,5	0.24	0
6	GOL	A	523	-	5,5,5	0.41	0	5,5,5	0.31	0
6	GOL	A	519	-	5,5,5	0.31	0	5,5,5	0.32	0
6	GOL	B	523	-	5,5,5	0.26	0	5,5,5	0.64	0

Mol	Type	Chain	Res	Link	Bond lengths			Bond angles		
					Counts	RMSZ	# Z > 2	Counts	RMSZ	# Z > 2
6	GOL	B	519	-	5,5,5	0.47	0	5,5,5	0.24	0
6	GOL	B	522	-	5,5,5	0.29	0	5,5,5	0.54	0
6	GOL	A	522	-	5,5,5	0.35	0	5,5,5	0.33	0
6	GOL	B	520	-	5,5,5	0.58	0	5,5,5	0.54	0
6	GOL	A	520	-	5,5,5	0.44	0	5,5,5	0.41	0
6	GOL	B	521	-	5,5,5	0.35	0	5,5,5	0.63	0
6	GOL	B	517	-	5,5,5	0.50	0	5,5,5	0.29	0

In the following table, the Chirals column lists the number of chiral outliers, the number of chiral centers analysed, the number of these observed in the model and the number defined in the Chemical Component Dictionary. Similar counts are reported in the Torsion and Rings columns. '-' means no outliers of that kind were identified.

Mol	Type	Chain	Res	Link	Chirals	Torsions	Rings
6	GOL	B	518	-	-	0/4/4/4	-
6	GOL	A	518	-	-	2/4/4/4	-
6	GOL	A	521	-	-	1/4/4/4	-
6	GOL	A	523	-	-	2/4/4/4	-
6	GOL	A	519	-	-	2/4/4/4	-
6	GOL	B	523	-	-	4/4/4/4	-
6	GOL	B	519	-	-	2/4/4/4	-
6	GOL	B	522	-	-	2/4/4/4	-
6	GOL	A	522	-	-	2/4/4/4	-
6	GOL	B	520	-	-	2/4/4/4	-
6	GOL	A	520	-	-	3/4/4/4	-
6	GOL	B	521	-	-	2/4/4/4	-
6	GOL	B	517	-	-	2/4/4/4	-

There are no bond length outliers.

There are no bond angle outliers.

There are no chirality outliers.

5 of 26 torsion outliers are listed below:

Mol	Chain	Res	Type	Atoms
6	A	519	GOL	O1-C1-C2-C3
6	B	517	GOL	O1-C1-C2-O2
6	B	517	GOL	O1-C1-C2-C3
6	B	520	GOL	C1-C2-C3-O3
6	B	521	GOL	O1-C1-C2-C3

There are no ring outliers.

2 monomers are involved in 2 short contacts:

Mol	Chain	Res	Type	Clashes	Symm-Clashes
6	B	523	GOL	1	0
6	B	521	GOL	1	0

5.7 Other polymers [i](#)

There are no such residues in this entry.

5.8 Polymer linkage issues [i](#)

There are no chain breaks in this entry.

6 Fit of model and data [i](#)

6.1 Protein, DNA and RNA chains [i](#)

In the following table, the column labelled ‘#RSRZ > 2’ contains the number (and percentage) of RSRZ outliers, followed by percent RSRZ outliers for the chain as percentile scores relative to all X-ray entries and entries of similar resolution. The OWAB column contains the minimum, median, 95th percentile and maximum values of the occupancy-weighted average B-factor per residue. The column labelled ‘Q < 0.9’ lists the number of (and percentage) of residues with an average occupancy less than 0.9.

Mol	Chain	Analysed	<RSRZ>	#RSRZ>2	OWAB(Å ²)	Q<0.9
1	A	426/433 (98%)	0.07	13 (3%) 51 56	21, 45, 72, 161	15 (3%)
1	B	426/433 (98%)	0.24	21 (4%) 35 39	23, 47, 79, 159	14 (3%)
All	All	852/866 (98%)	0.15	34 (3%) 42 47	21, 46, 78, 161	29 (3%)

The worst 5 of 34 RSRZ outliers are listed below:

Mol	Chain	Res	Type	RSRZ
1	B	23	VAL	6.0
1	B	33	ALA	5.9
1	B	28	ALA	5.4
1	A	25	LEU	5.2
1	A	22	LEU	5.0

6.2 Non-standard residues in protein, DNA, RNA chains [i](#)

There are no non-standard protein/DNA/RNA residues in this entry.

6.3 Carbohydrates [i](#)

In the following table, the Atoms column lists the number of modelled atoms in the group and the number defined in the chemical component dictionary. The B-factors column lists the minimum, median, 95th percentile and maximum values of B factors of atoms in the group. The column labelled ‘Q < 0.9’ lists the number of atoms with occupancy less than 0.9.

Mol	Type	Chain	Res	Atoms	RSCC	RSR	B-factors(Å ²)	Q<0.9
2	FUC	J	3	10/11	0.32	0.20	106,128,160,167	0
4	MAN	E	5	11/12	0.37	0.15	111,137,156,167	0
2	FUC	F	3	10/11	0.48	0.18	93,118,140,143	0
2	FUC	C	3	10/11	0.53	0.16	95,108,127,129	0
4	MAN	E	4	11/12	0.54	0.17	102,137,158,166	0

Continued on next page...

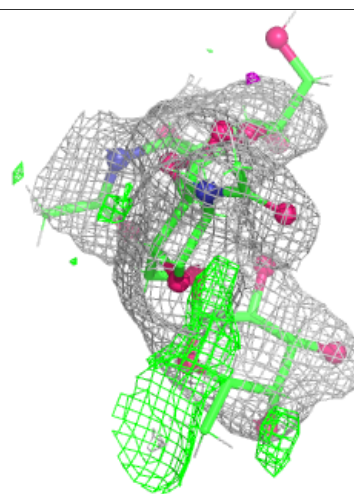
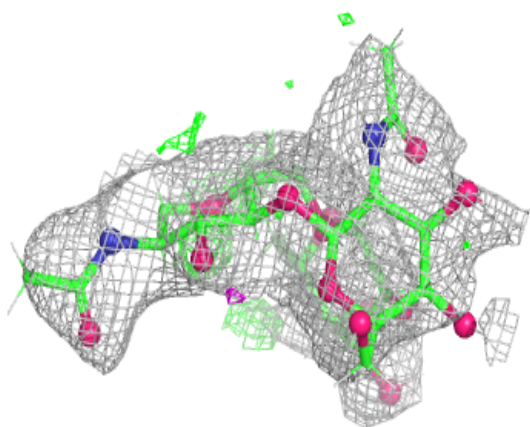
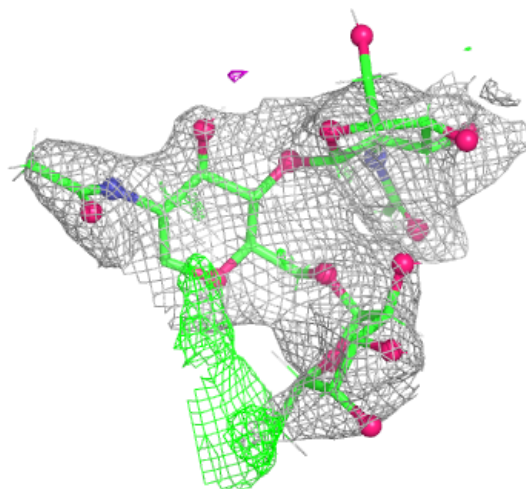
Continued from previous page...

Mol	Type	Chain	Res	Atoms	RSCC	RSR	B-factors(\AA^2)	Q<0.9
4	BMA	E	3	11/12	0.54	0.13	117,138,162,166	0
3	NAG	D	2	14/15	0.55	0.16	70,111,136,149	0
2	NAG	G	2	14/15	0.55	0.14	102,125,150,152	0
4	MAN	I	5	11/12	0.55	0.17	100,122,141,146	0
2	NAG	J	2	14/15	0.57	0.14	95,123,150,156	0
2	FUC	G	3	10/11	0.61	0.14	119,125,149,150	0
3	NAG	H	2	14/15	0.62	0.16	76,112,140,143	0
4	MAN	I	4	11/12	0.63	0.14	94,113,130,138	0
2	NAG	F	2	14/15	0.67	0.13	85,113,138,144	0
2	NAG	C	2	14/15	0.69	0.13	89,117,142,145	0
4	BMA	I	3	11/12	0.69	0.12	97,109,128,131	0
2	NAG	F	1	14/15	0.76	0.13	66,91,111,119	0
2	NAG	J	1	14/15	0.79	0.13	71,95,116,123	0
4	NAG	E	2	14/15	0.80	0.13	78,95,118,125	0
2	NAG	C	1	14/15	0.82	0.12	67,85,108,108	0
2	NAG	G	1	14/15	0.85	0.10	83,102,125,129	0
3	NAG	H	1	14/15	0.86	0.12	68,84,103,108	0
4	NAG	I	2	14/15	0.87	0.10	67,87,104,107	0
3	NAG	D	1	14/15	0.87	0.11	55,70,87,93	0
4	NAG	E	1	14/15	0.90	0.11	52,65,79,85	0
4	NAG	I	1	14/15	0.91	0.08	50,61,76,80	0

The following is a graphical depiction of the model fit to experimental electron density for oligosaccharide. Each fit is shown from different orientation to approximate a three-dimensional view.

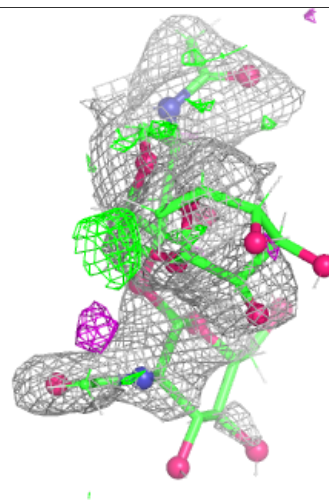
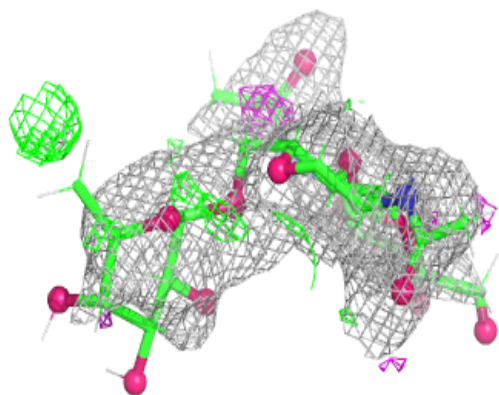
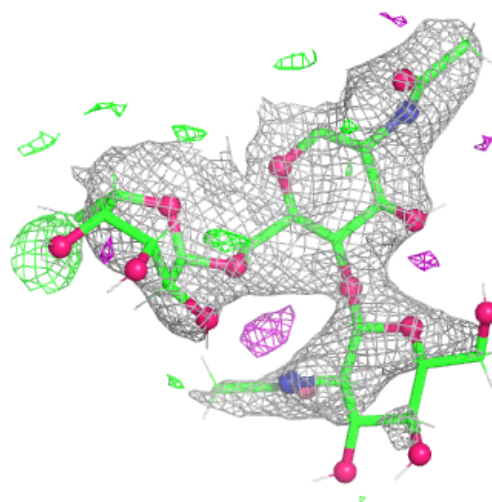
Electron density around Chain C:

$2mF_o-DF_c$ (at 0.7 rmsd) in gray
 mF_o-DF_c (at 3 rmsd) in purple (negative)
and green (positive)



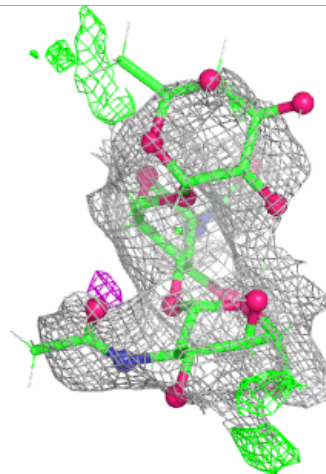
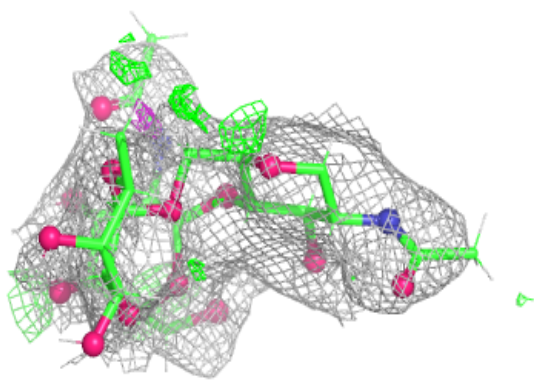
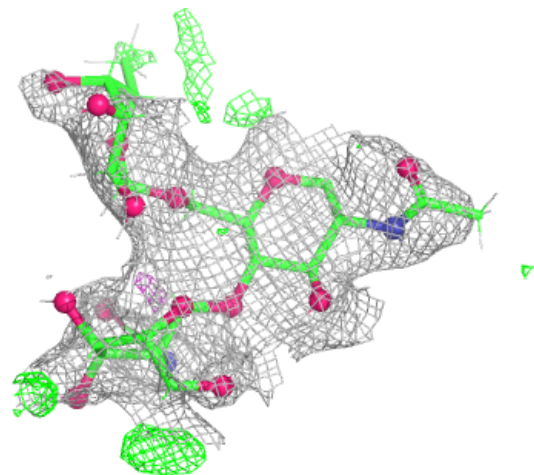
Electron density around Chain F:

$2mF_o-DF_c$ (at 0.7 rmsd) in gray
 mF_o-DF_c (at 3 rmsd) in purple (negative)
and green (positive)



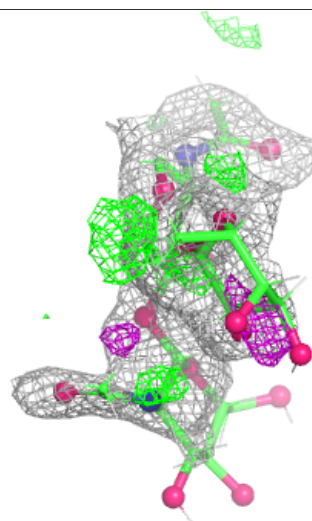
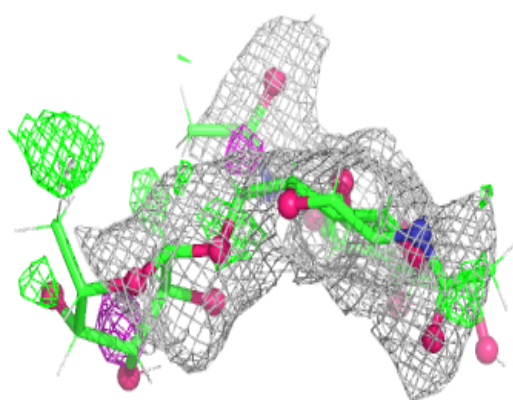
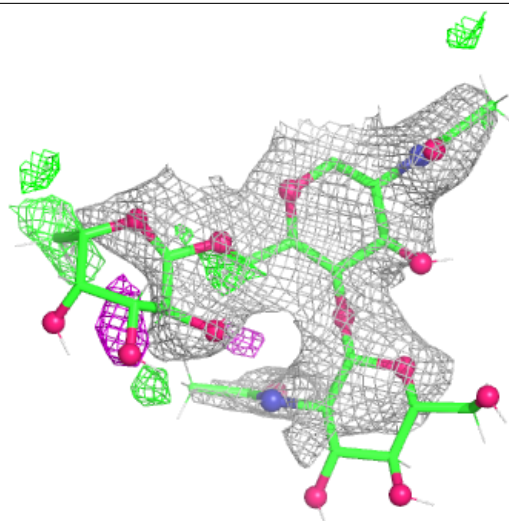
Electron density around Chain G:

$2mF_o-DF_c$ (at 0.7 rmsd) in gray
 mF_o-DF_c (at 3 rmsd) in purple (negative)
and green (positive)



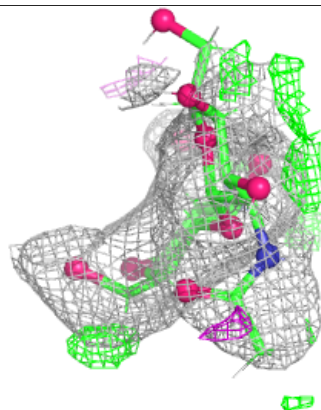
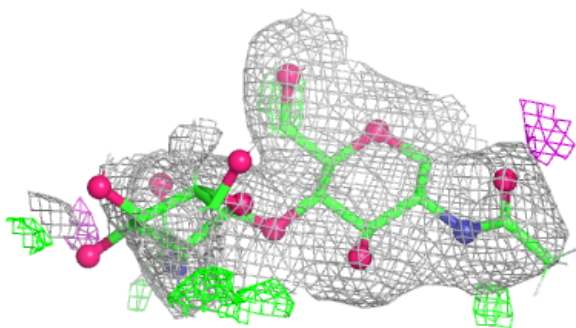
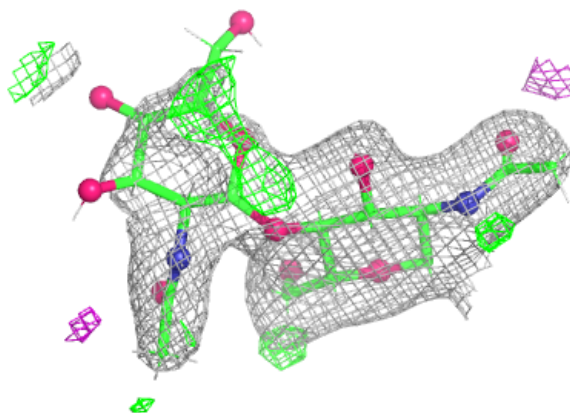
Electron density around Chain J:

$2mF_o-DF_c$ (at 0.7 rmsd) in gray
 mF_o-DF_c (at 3 rmsd) in purple (negative)
and green (positive)



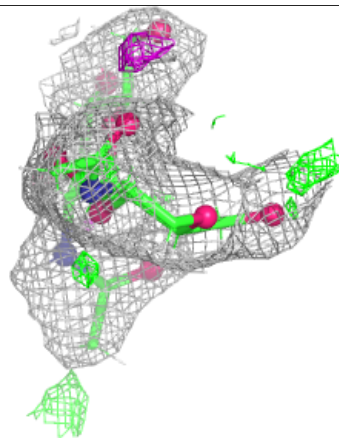
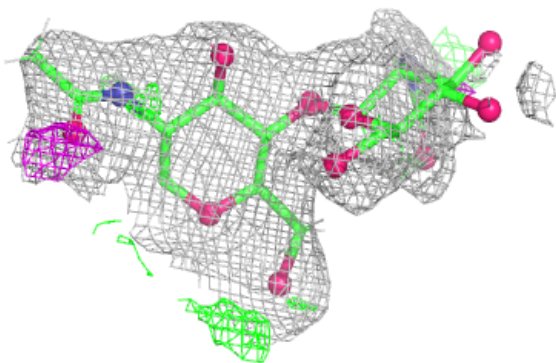
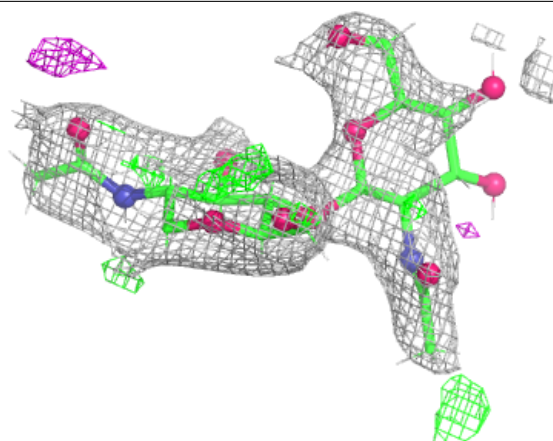
Electron density around Chain D:

$2mF_o-DF_c$ (at 0.7 rmsd) in gray
 mF_o-DF_c (at 3 rmsd) in purple (negative)
and green (positive)



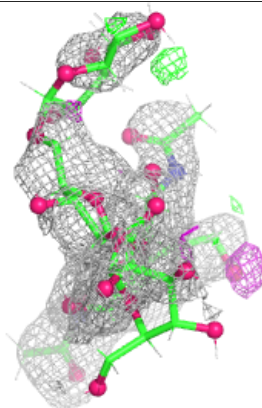
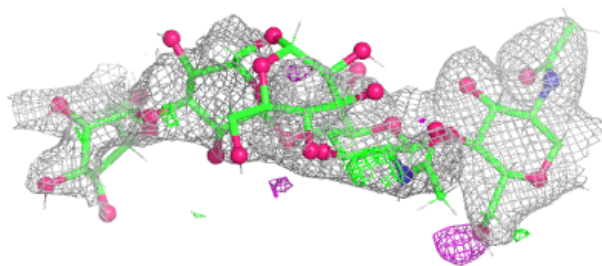
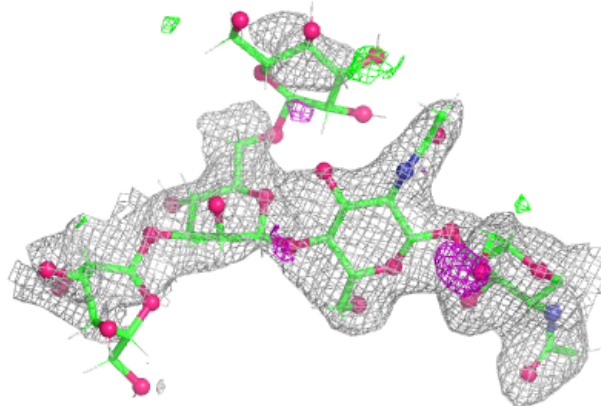
Electron density around Chain H:

$2mF_o-DF_c$ (at 0.7 rmsd) in gray
 mF_o-DF_c (at 3 rmsd) in purple (negative)
and green (positive)

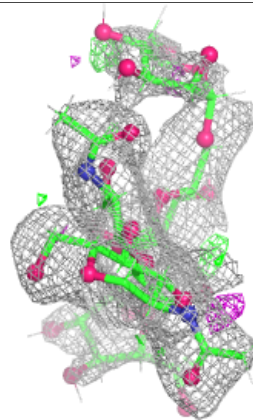
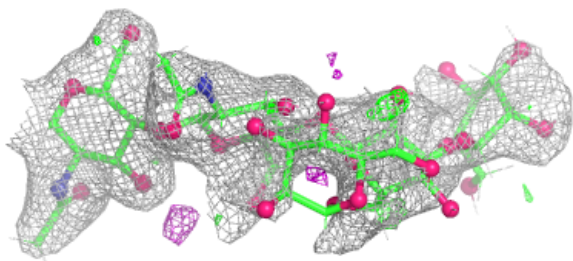
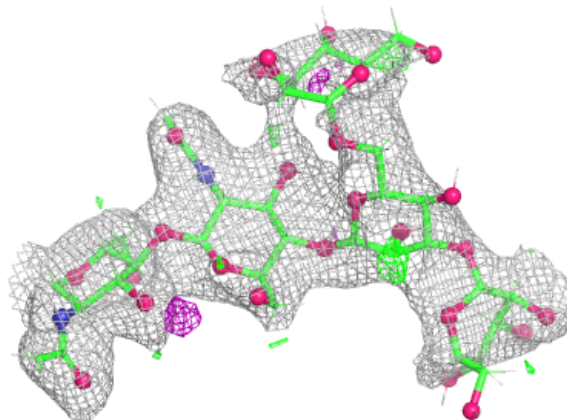


Electron density around Chain E:

$2mF_o-DF_c$ (at 0.7 rmsd) in gray
 mF_o-DF_c (at 3 rmsd) in purple (negative)
and green (positive)

**Electron density around Chain I:**

$2mF_o-DF_c$ (at 0.7 rmsd) in gray
 mF_o-DF_c (at 3 rmsd) in purple (negative)
and green (positive)



6.4 Ligands [i](#)

In the following table, the Atoms column lists the number of modelled atoms in the group and the number defined in the chemical component dictionary. The B-factors column lists the minimum, median, 95th percentile and maximum values of B factors of atoms in the group. The column labelled 'Q< 0.9' lists the number of atoms with occupancy less than 0.9.

Mol	Type	Chain	Res	Atoms	RSCC	RSR	B-factors(Å ²)	Q<0.9
6	GOL	A	520	6/6	0.71	0.17	68,82,93,96	0
6	GOL	B	521	6/6	0.74	0.19	56,67,74,79	0
6	GOL	B	520	6/6	0.76	0.17	58,74,87,105	0
6	GOL	A	519	6/6	0.76	0.17	70,88,97,105	0
6	GOL	B	517	6/6	0.77	0.17	65,80,96,96	0
5	ZN	A	503	1/1	0.81	0.36	74,74,74,74	0
6	GOL	A	523	6/6	0.82	0.16	58,71,96,106	0
6	GOL	A	521	6/6	0.83	0.14	57,70,84,84	0
5	ZN	B	503	1/1	0.84	0.28	74,74,74,74	0
5	ZN	A	524	1/1	0.84	0.19	44,44,44,44	1
6	GOL	A	522	6/6	0.86	0.15	54,76,134,134	0
6	GOL	B	519	6/6	0.86	0.14	59,71,82,82	0
6	GOL	B	522	6/6	0.87	0.13	61,73,86,86	0
6	GOL	B	523	6/6	0.87	0.13	55,67,83,84	0
6	GOL	B	518	6/6	0.88	0.11	65,78,89,91	0
5	ZN	A	504	1/1	0.89	0.23	44,44,44,44	1
6	GOL	A	518	6/6	0.89	0.11	51,62,70,85	0
5	ZN	B	502	1/1	0.95	0.12	48,48,48,48	0
5	ZN	A	502	1/1	0.96	0.11	48,48,48,48	0
5	ZN	B	501	1/1	0.98	0.13	47,47,47,47	0
5	ZN	A	501	1/1	0.98	0.12	42,42,42,42	0

6.5 Other polymers [i](#)

There are no such residues in this entry.