



# Full wwPDB X-ray Structure Validation Report ⓘ

Mar 5, 2026 – 04:26 PM UTC

PDB ID : 5EHS / pdb\_00005ehs  
Title : Crystal structure of the Drosophila CG3822 KaiR1D ligand binding domain complex with D-AP5  
Authors : Dharkar, P.; Mayer, M.L.  
Deposited on : 2015-10-28  
Resolution : 1.75 Å(reported)

This is a Full wwPDB X-ray Structure Validation Report for a publicly released PDB entry.

We welcome your comments at [validation@mail.wwpdb.org](mailto:validation@mail.wwpdb.org)

A user guide is available at

<https://www.wwpdb.org/validation/2017/XrayValidationReportHelp>

with specific help available everywhere you see the ⓘ symbol.

The types of validation reports are described at

<http://www.wwpdb.org/validation/2017/FAQs#types>.

---

The following versions of software and data (see [references ⓘ](#)) were used in the production of this report:

MolProbity	:	4-5-2 with Phenix2.0
Mogul	:	2022.3.0, CSD as543be (2022)
Xtriage (Phenix)	:	2.0
EDS	:	3.0
Percentile statistics	:	20250101.v01 (using entries in the PDB archive January 1st 2025)
CCP4	:	9.0.010 (Gargrove)
Density-Fitness	:	1.0.12
Ideal geometry (proteins)	:	Engh & Huber (2001)
Ideal geometry (DNA, RNA)	:	Parkinson et al. (1996)
Validation Pipeline (wwPDB-VP)	:	2.49

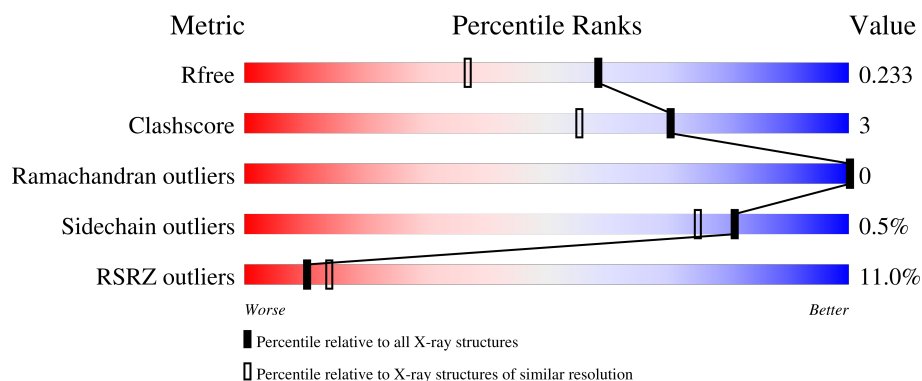
# 1 Overall quality at a glance

The following experimental techniques were used to determine the structure:

*X-RAY DIFFRACTION*

The reported resolution of this entry is 1.75 Å.

Percentile scores (ranging between 0-100) for global validation metrics of the entry are shown in the following graphic. The table shows the number of entries on which the scores are based.



Metric	Whole archive (#Entries)	Similar resolution (#Entries, resolution range(Å))
$R_{free}$	180053	1187 (1.74-1.74)
Clashscore	190562	1207 (1.74-1.74)
Ramachandran outliers	187476	1200 (1.74-1.74)
Sidechain outliers	187428	1200 (1.74-1.74)
RSRZ outliers	180081	1188 (1.74-1.74)

The table below summarises the geometric issues observed across the polymeric chains and their fit to the electron density. The red, orange, yellow and green segments of the lower bar indicate the fraction of residues that contain outliers for  $\geq 3$ , 2, 1 and 0 types of geometric quality criteria respectively. A grey segment represents the fraction of residues that are not modelled. The numeric value for each fraction is indicated below the corresponding segment, with a dot representing fractions  $\leq 5\%$ . The upper red bar (where present) indicates the fraction of residues that have poor fit to the electron density. The numeric value is given above the bar.

Mol	Chain	Length	Quality of chain
1	A	268	<div> <div>9%</div> <div>89%</div> <div>8%</div> <div>.</div> </div>
1	B	268	<div> <div>12%</div> <div>89%</div> <div>7%</div> <div>.</div> </div>

## 2 Entry composition

There are 4 unique types of molecules in this entry. The entry contains 8608 atoms, of which 4132 are hydrogens and 0 are deuteriums.

In the tables below, the ZeroOcc column contains the number of atoms modelled with zero occupancy, the AltConf column contains the number of residues with at least one atom in alternate conformation and the Trace column contains the number of residues modelled with at most 2 atoms.

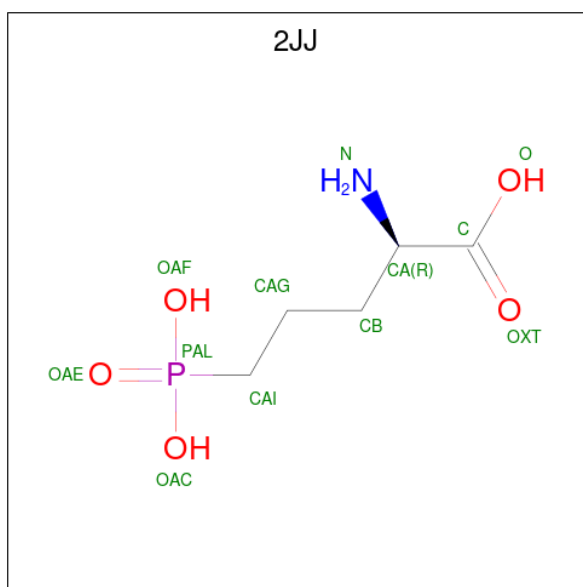
- Molecule 1 is a protein called RE06730p,GH17276.

Mol	Chain	Residues	Atoms						ZeroOcc	AltConf	Trace
1	A	260	Total	C	H	N	O	S	0	9	0
			4125	1307	2061	349	398	10			
1	B	258	Total	C	H	N	O	S	0	4	0
			4076	1293	2039	344	390	10			

There are 8 discrepancies between the modelled and reference sequences:

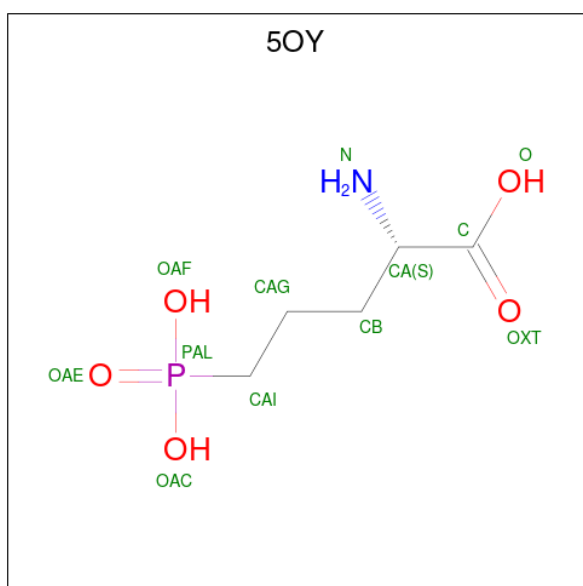
Chain	Residue	Modelled	Actual	Comment	Reference
A	1	GLY	-	expression tag	UNP Q8MS48
A	2	SER	-	expression tag	UNP Q8MS48
A	122	GLY	-	linker	UNP Q8MS48
A	123	THR	-	linker	UNP Q8MS48
B	1	GLY	-	expression tag	UNP Q8MS48
B	2	SER	-	expression tag	UNP Q8MS48
B	122	GLY	-	linker	UNP Q8MS48
B	123	THR	-	linker	UNP Q8MS48

- Molecule 2 is 5-phosphono-D-norvaline (CCD ID: 2JJ) (formula: C<sub>5</sub>H<sub>12</sub>NO<sub>5</sub>P).



Mol	Chain	Residues	Atoms						ZeroOcc	AltConf
2	A	1	Total	C	H	N	O	P	0	1
			20	5	8	1	5	1		
2	B	1	Total	C	H	N	O	P	0	1
			20	5	8	1	5	1		

- Molecule 3 is 5-phosphono-L-norvaline (CCD ID: 5OY) (formula:  $C_5H_{12}NO_5P$ ).



Mol	Chain	Residues	Atoms						ZeroOcc	AltConf
3	A	1	Total	C	H	N	O	P	0	1
			20	5	8	1	5	1		
3	B	1	Total	C	H	N	O	P	0	1
			20	5	8	1	5	1		

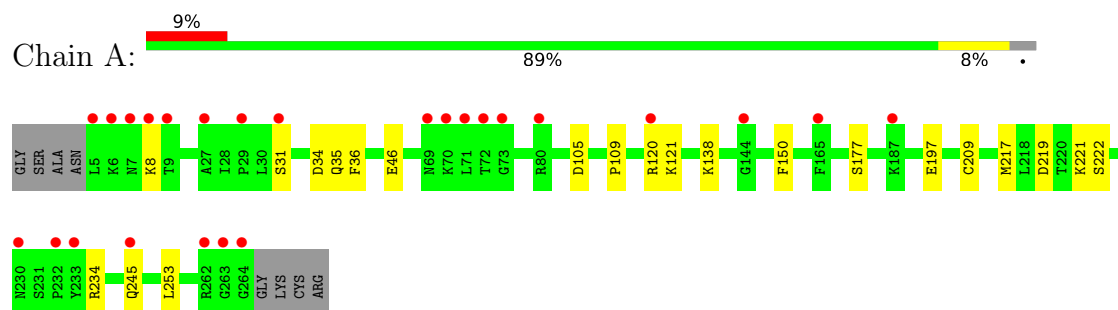
- Molecule 4 is water.

Mol	Chain	Residues	Atoms		ZeroOcc	AltConf
4	A	186	Total 187	O 187	0	1
4	B	140	Total 140	O 140	0	0

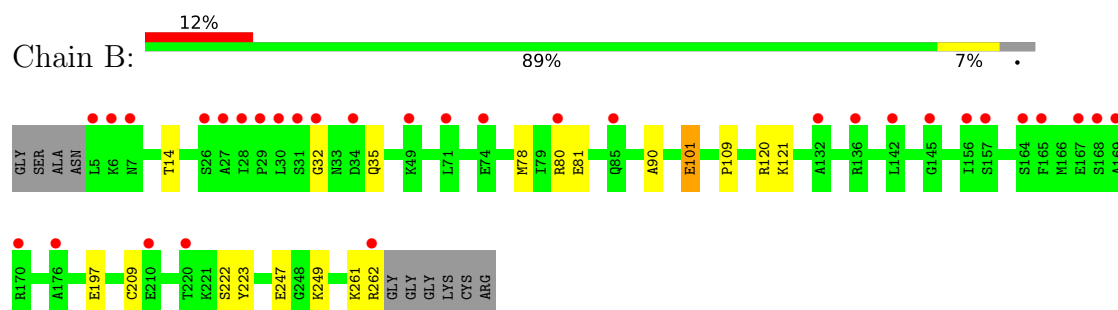
### 3 Residue-property plots

These plots are drawn for all protein, RNA, DNA and oligosaccharide chains in the entry. The first graphic for a chain summarises the proportions of the various outlier classes displayed in the second graphic. The second graphic shows the sequence view annotated by issues in geometry and electron density. Residues are color-coded according to the number of geometric quality criteria for which they contain at least one outlier: green = 0, yellow = 1, orange = 2 and red = 3 or more. A red dot above a residue indicates a poor fit to the electron density ( $RSRZ > 2$ ). Stretches of 2 or more consecutive residues without any outlier are shown as a green connector. Residues present in the sample, but not in the model, are shown in grey.

#### • Molecule 1: RE06730p,GH17276



#### • Molecule 1: RE06730p,GH17276



## 4 Data and refinement statistics

Property	Value	Source
Space group	P 31	Depositor
Cell constants a, b, c, $\alpha$ , $\beta$ , $\gamma$	54.70Å 54.70Å 147.90Å 90.00° 90.00° 120.00°	Depositor
Resolution (Å)	39.89 – 1.75 39.89 – 1.75	Depositor EDS
% Data completeness (in resolution range)	97.5 (39.89-1.75) 97.4 (39.89-1.75)	Depositor EDS
$R_{merge}$	0.04	Depositor
$R_{sym}$	(Not available)	Depositor
$\langle I/\sigma(I) \rangle$ <sup>1</sup>	1.93 (at 1.75Å)	Xtriage
Refinement program	PHENIX (1.10.1-2155_1692: ???)	Depositor
R, $R_{free}$	0.188 , 0.234 0.188 , 0.233	Depositor DCC
$R_{free}$ test set	2290 reflections (4.58%)	wwPDB-VP
Wilson B-factor (Å <sup>2</sup> )	18.1	Xtriage
Anisotropy	0.050	Xtriage
Bulk solvent $k_{sol}$ (e/Å <sup>3</sup> ), $B_{sol}$ (Å <sup>2</sup> )	0.41 , 50.8	EDS
L-test for twinning <sup>2</sup>	$\langle  L  \rangle = 0.49$ , $\langle L^2 \rangle = 0.32$	Xtriage
Estimated twinning fraction	0.011 for -h,-k,l 0.044 for h,-h-k,-l 0.028 for -k,-h,-l	Xtriage
$F_o, F_c$ correlation	0.95	EDS
Total number of atoms	8608	wwPDB-VP
Average B, all atoms (Å <sup>2</sup> )	35.0	wwPDB-VP

Xtriage's analysis on translational NCS is as follows: *The largest off-origin peak in the Patterson function is 5.33% of the height of the origin peak. No significant pseudotranslation is detected.*

<sup>1</sup>Intensities estimated from amplitudes.

<sup>2</sup>Theoretical values of  $\langle |L| \rangle$ ,  $\langle L^2 \rangle$  for acentric reflections are 0.5, 0.333 respectively for untwinned datasets, and 0.375, 0.2 for perfectly twinned datasets.

## 5 Model quality ⓘ

### 5.1 Standard geometry ⓘ

Bond lengths and bond angles in the following residue types are not validated in this section: 2JJ, 5OY

The Z score for a bond length (or angle) is the number of standard deviations the observed value is removed from the expected value. A bond length (or angle) with  $|Z| > 5$  is considered an outlier worth inspection. RMSZ is the root-mean-square of all Z scores of the bond lengths (or angles).

Mol	Chain	Bond lengths		Bond angles	
		RMSZ	$\# Z  > 5$	RMSZ	$\# Z  > 5$
1	A	0.54	0/2130	0.66	0/2873
1	B	0.52	1/2092 (0.0%)	0.62	0/2823
All	All	0.53	1/4222 (0.0%)	0.64	0/5696

All (1) bond length outliers are listed below:

Mol	Chain	Res	Type	Atoms	Z	Observed(Å)	Ideal(Å)
1	B	101	GLU	CB-CG	6.08	1.70	1.52

There are no bond angle outliers.

There are no chirality outliers.

There are no planarity outliers.

### 5.2 Too-close contacts ⓘ

In the following table, the Non-H and H(model) columns list the number of non-hydrogen atoms and hydrogen atoms in the chain respectively. The H(added) column lists the number of hydrogen atoms added and optimized by MolProbity. The Clashes column lists the number of clashes within the asymmetric unit, whereas Symm-Clashes lists symmetry-related clashes.

Mol	Chain	Non-H	H(model)	H(added)	Clashes	Symm-Clashes
1	A	2064	2061	2025	15	0
1	B	2037	2039	2015	13	0
2	A	12	8	11	1	0
2	B	12	8	11	0	0
3	A	12	8	0	0	0
3	B	12	8	0	0	0
4	A	187	0	0	4	0
4	B	140	0	0	3	0

*Continued on next page...*



*Continued from previous page...*

Mol	Chain	Non-H	H(model)	H(added)	Clashes	Symm-Clashes
All	All	4476	4132	4062	28	0

The all-atom clashscore is defined as the number of clashes found per 1000 atoms (including hydrogen atoms). The all-atom clashscore for this structure is 3.

All (28) close contacts within the same asymmetric unit are listed below, sorted by their clash magnitude.

Atom-1	Atom-2	Interatomic distance (Å)	Clash overlap (Å)
1:A:177:SER:N	4:A:403:HOH:O	2.30	0.64
1:B:197:GLU:OE1	1:B:223:TYR:OH	2.21	0.58
1:B:261:LYS:O	1:B:262:ARG:HG3	2.07	0.54
1:A:245:GLN:HG2	4:B:512:HOH:O	2.07	0.54
1:B:120:ARG:NH1	4:B:402:HOH:O	2.31	0.53
1:A:46:GLU:OE1	4:A:401:HOH:O	2.18	0.52
1:A:120:ARG:NH1	4:A:410:HOH:O	2.41	0.52
1:B:109:PRO:HB3	1:B:222:SER:HB3	1.91	0.51
1:B:101:GLU:OE2	4:B:401:HOH:O	2.18	0.49
1:A:109:PRO:HB3	1:A:222:SER:HB3	1.95	0.49
1:B:32:GLY:O	1:B:35:GLN:HG2	2.13	0.48
1:A:121:LYS:NZ	1:A:209:CYS:O	2.34	0.47
1:B:247:GLU:OE1	1:B:249:LYS:HE3	2.15	0.46
1:A:105:ASP:HB3	1:A:234:ARG:HD3	1.98	0.46
1:A:197[A]:GLU:OE2	2:A:301[A]:2JJ:OAE	2.35	0.45
1:B:14:THR:HA	1:B:78[A]:MET:CE	2.47	0.44
1:A:31:SER:O	1:A:34:ASP:CB	2.65	0.44
1:B:78[A]:MET:HE2	1:B:90:ALA:HB1	2.00	0.43
1:B:261:LYS:C	1:B:262:ARG:HG3	2.44	0.43
1:B:80:ARG:HG2	1:B:81:GLU:N	2.34	0.42
1:A:31:SER:O	1:A:34:ASP:HB3	2.20	0.42
1:B:261:LYS:O	1:B:262:ARG:CG	2.68	0.42
1:A:219:ASP:OD2	1:A:221:LYS:HE2	2.20	0.42
1:B:121:LYS:NZ	1:B:209:CYS:O	2.47	0.41
1:A:138:LYS:NZ	4:A:417:HOH:O	2.50	0.41
1:A:150:PHE:CE1	1:A:219:ASP:HB3	2.55	0.41
1:A:35:GLN:HG3	1:A:36:PHE:CZ	2.57	0.40

There are no symmetry-related clashes.

## 5.3 Torsion angles

### 5.3.1 Protein backbone

In the following table, the Percentiles column shows the percent Ramachandran outliers of the chain as a percentile score with respect to all X-ray entries followed by that with respect to entries of similar resolution.

The Analysed column shows the number of residues for which the backbone conformation was analysed, and the total number of residues.

Mol	Chain	Analysed	Favoured	Allowed	Outliers	Percentiles	
1	A	267/268 (100%)	260 (97%)	7 (3%)	0	100	100
1	B	260/268 (97%)	258 (99%)	2 (1%)	0	100	100
All	All	527/536 (98%)	518 (98%)	9 (2%)	0	100	100

There are no Ramachandran outliers to report.

### 5.3.2 Protein sidechains

In the following table, the Percentiles column shows the percent sidechain outliers of the chain as a percentile score with respect to all X-ray entries followed by that with respect to entries of similar resolution.

The Analysed column shows the number of residues for which the sidechain conformation was analysed, and the total number of residues.

Mol	Chain	Analysed	Rotameric	Outliers	Percentiles	
1	A	225/226 (100%)	223 (99%)	2 (1%)	70	59
1	B	222/226 (98%)	222 (100%)	0	100	100
All	All	447/452 (99%)	445 (100%)	2 (0%)	81	79

All (2) residues with a non-rotameric sidechain are listed below:

Mol	Chain	Res	Type
1	A	8	LYS
1	A	253	LEU

Sometimes sidechains can be flipped to improve hydrogen bonding and reduce clashes. All (2) such sidechains are listed below:

Mol	Chain	Res	Type
1	A	245	GLN

*Continued on next page...*

*Continued from previous page...*

Mol	Chain	Res	Type
1	B	102	GLN

### 5.3.3 RNA [i](#)

There are no RNA molecules in this entry.

## 5.4 Non-standard residues in protein, DNA, RNA chains [i](#)

There are no non-standard protein/DNA/RNA residues in this entry.

## 5.5 Carbohydrates [i](#)

There are no oligosaccharides in this entry.

## 5.6 Ligand geometry [i](#)

4 ligands are modelled in this entry.

In the following table, the Counts columns list the number of bonds (or angles) for which Mogul statistics could be retrieved, the number of bonds (or angles) that are observed in the model and the number of bonds (or angles) that are defined in the Chemical Component Dictionary. The Link column lists molecule types, if any, to which the group is linked. The Z score for a bond length (or angle) is the number of standard deviations the observed value is removed from the expected value. A bond length (or angle) with  $|Z| > 2$  is considered an outlier worth inspection. RMSZ is the root-mean-square of all Z scores of the bond lengths (or angles).

Mol	Type	Chain	Res	Link	Bond lengths			Bond angles		
					Counts	RMSZ	$\# Z  > 2$	Counts	RMSZ	$\# Z  > 2$
2	2JJ	B	301[A]	-	10,11,11	4.08	2 (20%)	12,15,15	1.59	2 (16%)
3	5OY	A	302[B]	-	10,11,11	5.11	2 (20%)	12,15,15	1.71	3 (25%)
3	5OY	B	302[B]	-	10,11,11	4.46	2 (20%)	12,15,15	1.56	2 (16%)
2	2JJ	A	301[A]	-	10,11,11	4.53	1 (10%)	12,15,15	1.53	2 (16%)

In the following table, the Chirals column lists the number of chiral outliers, the number of chiral centers analysed, the number of these observed in the model and the number defined in the Chemical Component Dictionary. Similar counts are reported in the Torsion and Rings columns. '-' means no outliers of that kind were identified.

Mol	Type	Chain	Res	Link	Chirals	Torsions	Rings
2	2JJ	B	301[A]	-	-	7/11/11/11	-
3	5OY	A	302[B]	-	-	1/11/11/11	-
3	5OY	B	302[B]	-	-	2/11/11/11	-
2	2JJ	A	301[A]	-	-	10/11/11/11	-

All (7) bond length outliers are listed below:

Mol	Chain	Res	Type	Atoms	Z	Observed(Å)	Ideal(Å)
3	A	302[B]	5OY	PAL-CAI	15.65	1.95	1.78
2	A	301[A]	2JJ	PAL-CAI	13.83	1.93	1.78
3	B	302[B]	5OY	PAL-CAI	13.77	1.93	1.78
2	B	301[A]	2JJ	PAL-CAI	12.32	1.91	1.78
3	A	302[B]	5OY	OXT-C	2.68	1.30	1.22
3	B	302[B]	5OY	OXT-C	2.23	1.28	1.22
2	B	301[A]	2JJ	OXT-C	2.01	1.28	1.22

All (9) bond angle outliers are listed below:

Mol	Chain	Res	Type	Atoms	Z	Observed(°)	Ideal(°)
2	B	301[A]	2JJ	OAE-PAL-CAI	-3.86	104.17	111.45
3	B	302[B]	5OY	O-C-OXT	-3.63	115.84	124.08
3	A	302[B]	5OY	O-C-OXT	-3.60	115.91	124.08
2	A	301[A]	2JJ	OAE-PAL-CAI	-3.45	104.95	111.45
3	A	302[B]	5OY	OAE-PAL-CAI	-3.27	105.28	111.45
2	B	301[A]	2JJ	OAF-PAL-OAC	2.78	115.88	107.96
2	A	301[A]	2JJ	OAF-PAL-OAC	2.38	114.75	107.96
3	B	302[B]	5OY	OAE-PAL-CAI	-2.12	107.45	111.45
3	A	302[B]	5OY	CB-CAG-CAI	2.04	116.87	112.61

There are no chirality outliers.

All (20) torsion outliers are listed below:

Mol	Chain	Res	Type	Atoms
2	A	301[A]	2JJ	CAG-CAI-PAL-OAE
2	A	301[A]	2JJ	N-CA-CB-CAG
2	A	301[A]	2JJ	C-CA-CB-CAG
2	B	301[A]	2JJ	OXT-C-CA-N
2	B	301[A]	2JJ	CB-CAG-CAI-PAL
2	B	301[A]	2JJ	O-C-CA-N
2	B	301[A]	2JJ	CAI-CAG-CB-CA
2	A	301[A]	2JJ	CAI-CAG-CB-CA

*Continued on next page...*

*Continued from previous page...*

Mol	Chain	Res	Type	Atoms
3	B	302[B]	5OY	CB-CAG-CAI-PAL
2	A	301[A]	2JJ	OXT-C-CA-CB
2	A	301[A]	2JJ	O-C-CA-CB
2	A	301[A]	2JJ	CB-CAG-CAI-PAL
2	A	301[A]	2JJ	CAG-CAI-PAL-OAC
2	A	301[A]	2JJ	CAG-CAI-PAL-OAF
2	B	301[A]	2JJ	O-C-CA-CB
3	A	302[B]	5OY	OXT-C-CA-N
2	B	301[A]	2JJ	OXT-C-CA-CB
2	A	301[A]	2JJ	O-C-CA-N
3	B	302[B]	5OY	CAI-CAG-CB-CA
2	B	301[A]	2JJ	N-CA-CB-CAG

There are no ring outliers.

1 monomer is involved in 1 short contact:

Mol	Chain	Res	Type	Clashes	Symm-Clashes
2	A	301[A]	2JJ	1	0

## 5.7 Other polymers [i](#)

There are no such residues in this entry.

## 5.8 Polymer linkage issues [i](#)

There are no chain breaks in this entry.

## 6 Fit of model and data

### 6.1 Protein, DNA and RNA chains

In the following table, the column labelled ‘#RSRZ> 2’ contains the number (and percentage) of RSRZ outliers, followed by percent RSRZ outliers for the chain as percentile scores relative to all X-ray entries and entries of similar resolution. The OWAB column contains the minimum, median, 95<sup>th</sup> percentile and maximum values of the occupancy-weighted average B-factor per residue. The column labelled ‘Q< 0.9’ lists the number of (and percentage) of residues with an average occupancy less than 0.9.

Mol	Chain	Analysed	<RSRZ>	#RSRZ>2			OWAB(Å <sup>2</sup> )	Q<0.9
1	A	260/268 (97%)	0.21	25 (9%)	13	18	10, 27, 71, 115	5 (1%)
1	B	258/268 (96%)	0.64	32 (12%)	8	11	13, 32, 80, 119	2 (0%)
All	All	518/536 (96%)	0.42	57 (11%)	10	14	10, 30, 77, 119	7 (1%)

All (57) RSRZ outliers are listed below:

Mol	Chain	Res	Type	RSRZ
1	B	27	ALA	10.2
1	B	29	PRO	6.8
1	B	28	ILE	6.5
1	A	71	LEU	6.5
1	B	71	LEU	6.4
1	A	263	GLY	6.2
1	A	232	PRO	4.7
1	B	32	GLY	4.5
1	B	262	ARG	4.5
1	B	26	SER	4.4
1	A	262	ARG	4.0
1	B	7	ASN	4.0
1	B	30	LEU	3.9
1	A	165	PHE	3.9
1	A	5	LEU	3.7
1	A	72	THR	3.7
1	A	7	ASN	3.6
1	B	80	ARG	3.5
1	A	230	ASN	3.3
1	A	31	SER	3.2
1	B	164	SER	3.2
1	B	145	GLY	3.1
1	B	5	LEU	3.1
1	A	8	LYS	3.0

*Continued on next page...*

*Continued from previous page...*

Mol	Chain	Res	Type	RSRZ
1	A	6	LYS	3.0
1	B	6	LYS	2.9
1	A	73	GLY	2.9
1	B	168	SER	2.9
1	B	132	ALA	2.8
1	B	165	PHE	2.8
1	A	29	PRO	2.7
1	B	176	ALA	2.7
1	A	233	TYR	2.6
1	B	156	ILE	2.6
1	B	49	LYS	2.6
1	B	220	THR	2.6
1	B	31	SER	2.6
1	A	144	GLY	2.6
1	A	120	ARG	2.6
1	B	136	ARG	2.5
1	A	187	LYS	2.4
1	B	85	GLN	2.4
1	A	27	ALA	2.4
1	B	74	GLU	2.4
1	B	142	LEU	2.3
1	B	167	GLU	2.3
1	B	170	ARG	2.3
1	A	245	GLN	2.2
1	B	157	SER	2.2
1	A	80	ARG	2.2
1	A	9	THR	2.2
1	B	169	ALA	2.1
1	B	34	ASP	2.1
1	B	210	GLU	2.1
1	A	70	LYS	2.1
1	A	264	GLY	2.0
1	A	69	ASN	2.0

## 6.2 Non-standard residues in protein, DNA, RNA chains [i](#)

There are no non-standard protein/DNA/RNA residues in this entry.

## 6.3 Carbohydrates [i](#)

There are no oligosaccharides in this entry.

## 6.4 Ligands [i](#)

In the following table, the Atoms column lists the number of modelled atoms in the group and the number defined in the chemical component dictionary. The B-factors column lists the minimum, median, 95<sup>th</sup> percentile and maximum values of B factors of atoms in the group. The column labelled 'Q< 0.9' lists the number of atoms with occupancy less than 0.9.

Mol	Type	Chain	Res	Atoms	RSCC	RSR	B-factors(Å <sup>2</sup> )	Q<0.9
2	2JJ	B	301[A]	12/12	0.82	0.17	21,56,78,78	20
3	5OY	B	302[B]	12/12	0.84	0.17	21,56,79,79	20
2	2JJ	A	301[A]	12/12	0.89	0.13	19,45,60,60	20
3	5OY	A	302[B]	12/12	0.92	0.12	13,45,58,58	20

## 6.5 Other polymers [i](#)

There are no such residues in this entry.