



Full wwPDB X-ray Structure Validation Report ⓘ

Mar 9, 2026 – 11:22 PM UTC

PDB ID : 4E7D / pdb_00004e7d
Title : E. cloacae MurA in complex with UDP
Authors : Zhu, J.-Y.; Yang, Y.; Schonbrunn, E.
Deposited on : 2012-03-16
Resolution : 2.50 Å(reported)

This is a Full wwPDB X-ray Structure Validation Report for a publicly released PDB entry.

We welcome your comments at validation@mail.wwpdb.org

A user guide is available at

<https://www.wwpdb.org/validation/2017/XrayValidationReportHelp>

with specific help available everywhere you see the ⓘ symbol.

The types of validation reports are described at

<http://www.wwpdb.org/validation/2017/FAQs#types>.

The following versions of software and data (see [references ⓘ](#)) were used in the production of this report:

MolProbity : 4-5-2 with Phenix2.0
Mogul : 2022.3.0, CSD as543be (2022)
Xtrriage (Phenix) : 2.0
EDS : 3.0
Buster-report : wwPDB partial adaption of 1.1.7 (2018)
Percentile statistics : 20250101.v01 (using entries in the PDB archive January 1st 2025)
CCP4 : 9.0.010 (Gargrove)
Density-Fitness : 1.0.12
Ideal geometry (proteins) : Engh & Huber (2001)
Ideal geometry (DNA, RNA) : Parkinson et al. (1996)
Validation Pipeline (wwPDB-VP) : 2.49

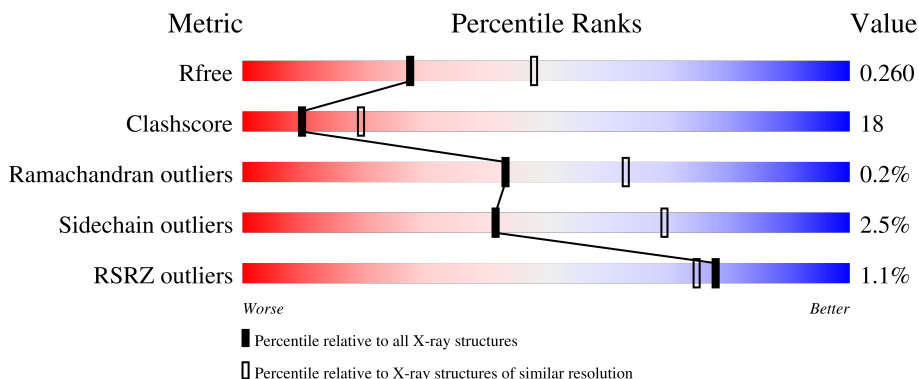
1 Overall quality at a glance i

The following experimental techniques were used to determine the structure:

X-RAY DIFFRACTION

The reported resolution of this entry is 2.50 Å.

Percentile scores (ranging between 0-100) for global validation metrics of the entry are shown in the following graphic. The table shows the number of entries on which the scores are based.



Metric	Whole archive (#Entries)	Similar resolution (#Entries, resolution range(Å))
R_{free}	180053	5829 (2.50-2.50)
Clashscore	190562	6492 (2.50-2.50)
Ramachandran outliers	187476	6378 (2.50-2.50)
Sidechain outliers	187428	6380 (2.50-2.50)
RSRZ outliers	180081	5833 (2.50-2.50)

The table below summarises the geometric issues observed across the polymeric chains and their fit to the electron density. The red, orange, yellow and green segments of the lower bar indicate the fraction of residues that contain outliers for ≥ 3 , 2, 1 and 0 types of geometric quality criteria respectively. A grey segment represents the fraction of residues that are not modelled. The numeric value for each fraction is indicated below the corresponding segment, with a dot representing fractions $\leq 5\%$. The upper red bar (where present) indicates the fraction of residues that have poor fit to the electron density. The numeric value is given above the bar.

Mol	Chain	Length	Quality of chain
1	A	419	<div style="display: flex; align-items: center;"> <div style="width: 2%; height: 10px; background-color: red; margin-right: 2px;"></div> <div style="width: 58%; height: 10px; background-color: green; margin-right: 2px;"></div> <div style="width: 37%; height: 10px; background-color: yellow; margin-right: 2px;"></div> <div style="width: 5%; height: 10px; background-color: orange;"></div> </div> <p style="font-size: small; margin-top: 5px;">2% 58% 37% 5%</p>
1	B	419	<div style="display: flex; align-items: center;"> <div style="width: 68%; height: 10px; background-color: green; margin-right: 2px;"></div> <div style="width: 29%; height: 10px; background-color: yellow; margin-right: 2px;"></div> <div style="width: 3%; height: 10px; background-color: orange;"></div> </div> <p style="font-size: small; margin-top: 5px;">68% 29% .</p>
1	C	419	<div style="display: flex; align-items: center;"> <div style="width: 2%; height: 10px; background-color: red; margin-right: 2px;"></div> <div style="width: 64%; height: 10px; background-color: green; margin-right: 2px;"></div> <div style="width: 32%; height: 10px; background-color: yellow; margin-right: 2px;"></div> <div style="width: 2%; height: 10px; background-color: orange;"></div> </div> <p style="font-size: small; margin-top: 5px;">% 64% 32% .</p>
1	D	419	<div style="display: flex; align-items: center;"> <div style="width: 2%; height: 10px; background-color: red; margin-right: 2px;"></div> <div style="width: 64%; height: 10px; background-color: green; margin-right: 2px;"></div> <div style="width: 30%; height: 10px; background-color: yellow; margin-right: 2px;"></div> <div style="width: 5%; height: 10px; background-color: orange;"></div> </div> <p style="font-size: small; margin-top: 5px;">2% 64% 30% 5% .</p>

The following table lists non-polymeric compounds, carbohydrate monomers and non-standard

residues in protein, DNA, RNA chains that are outliers for geometric or electron-density-fit criteria:

Mol	Type	Chain	Res	Chirality	Geometry	Clashes	Electron density
2	EDO	B	504	-	-	X	-

2 Entry composition

There are 5 unique types of molecules in this entry. The entry contains 13021 atoms, of which 0 are hydrogens and 0 are deuteriums.

In the tables below, the ZeroOcc column contains the number of atoms modelled with zero occupancy, the AltConf column contains the number of residues with at least one atom in alternate conformation and the Trace column contains the number of residues modelled with at most 2 atoms.

- Molecule 1 is a protein called UDP-N-acetylglucosamine 1-carboxyvinyltransferase.

Mol	Chain	Residues	Atoms					ZeroOcc	AltConf	Trace
			Total	C	N	O	S			
1	A	419	3142	1976	554	598	14	0	0	0
1	B	419	3142	1976	554	598	14	0	0	0
1	C	419	3142	1976	554	598	14	0	0	0
1	D	419	3142	1976	554	598	14	0	0	0

There are 4 discrepancies between the modelled and reference sequences:

Chain	Residue	Modelled	Actual	Comment	Reference
A	67	IAS	ASN	SEE REMARK 999	UNP P33038
B	67	IAS	ASN	SEE REMARK 999	UNP P33038
C	67	IAS	ASN	SEE REMARK 999	UNP P33038
D	67	IAS	ASN	SEE REMARK 999	UNP P33038

- Molecule 2 is 1,2-ETHANEDIOL (CCD ID: EDO) (formula: C₂H₆O₂).



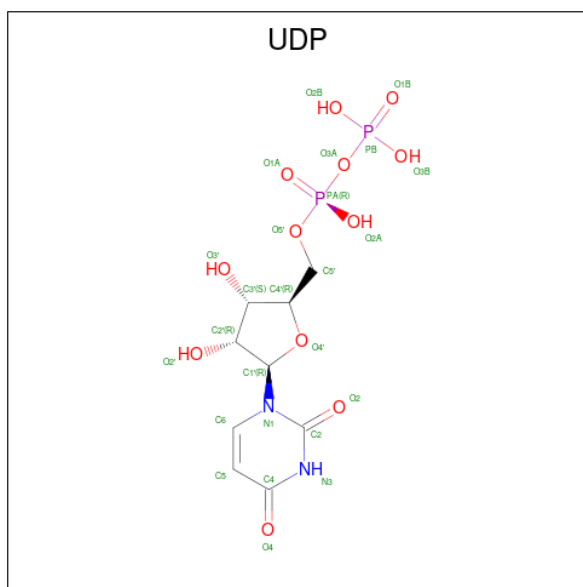
Mol	Chain	Residues	Atoms	ZeroOcc	AltConf
2	A	1	Total C O 4 2 2	0	0
2	A	1	Total C O 4 2 2	0	0
2	A	1	Total C O 4 2 2	0	0
2	A	1	Total C O 4 2 2	0	0
2	B	1	Total C O 4 2 2	0	0
2	B	1	Total C O 4 2 2	0	0
2	B	1	Total C O 4 2 2	0	0
2	B	1	Total C O 4 2 2	0	0
2	C	1	Total C O 4 2 2	0	0
2	C	1	Total C O 4 2 2	0	0
2	C	1	Total C O 4 2 2	0	0
2	C	1	Total C O 4 2 2	0	0
2	D	1	Total C O 4 2 2	0	0
2	D	1	Total C O 4 2 2	0	0

Continued on next page...

Continued from previous page...

Mol	Chain	Residues	Atoms			ZeroOcc	AltConf
2	D	1	Total	C	O	0	0
			4	2	2		
2	D	1	Total	C	O	0	0
			4	2	2		

- Molecule 3 is URIDINE-5'-DIPHOSPHATE (CCD ID: UDP) (formula: $C_9H_{14}N_2O_{12}P_2$).



Mol	Chain	Residues	Atoms					ZeroOcc	AltConf
3	A	1	Total	C	N	O	P	0	0
			25	9	2	12	2		

- Molecule 4 is ACETATE ION (CCD ID: ACT) (formula: $C_2H_3O_2$).



Mol	Chain	Residues	Atoms	ZeroOcc	AltConf		
4	C	1	Total	C	O	0	0
			4	2	2		
4	D	1	Total	C	O	0	0
			4	2	2		

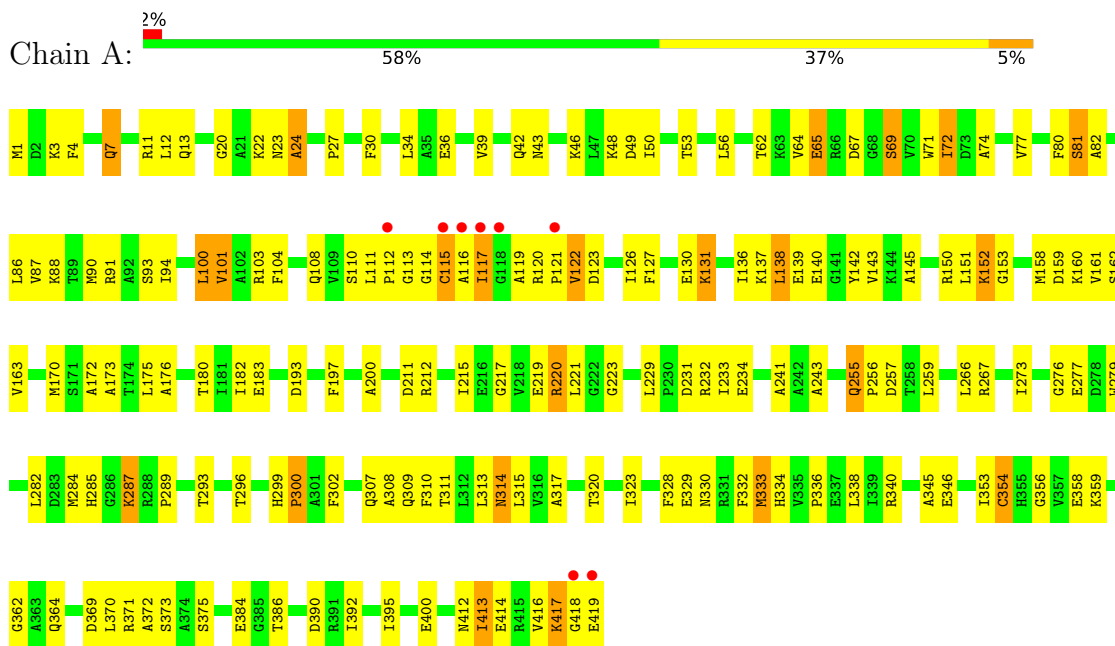
- Molecule 5 is water.

Mol	Chain	Residues	Atoms	ZeroOcc	AltConf	
5	A	75	Total	O	0	0
			75	75		
5	B	93	Total	O	0	0
			93	93		
5	C	101	Total	O	0	0
			101	101		
5	D	87	Total	O	0	0
			87	87		

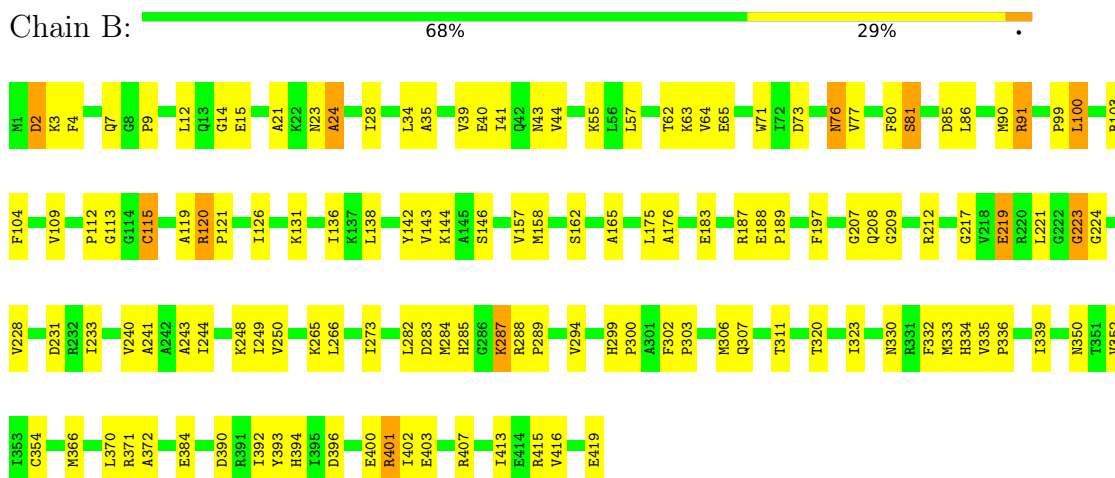
3 Residue-property plots [i](#)

These plots are drawn for all protein, RNA, DNA and oligosaccharide chains in the entry. The first graphic for a chain summarises the proportions of the various outlier classes displayed in the second graphic. The second graphic shows the sequence view annotated by issues in geometry and electron density. Residues are color-coded according to the number of geometric quality criteria for which they contain at least one outlier: green = 0, yellow = 1, orange = 2 and red = 3 or more. A red dot above a residue indicates a poor fit to the electron density ($RSRZ > 2$). Stretches of 2 or more consecutive residues without any outlier are shown as a green connector. Residues present in the sample, but not in the model, are shown in grey.

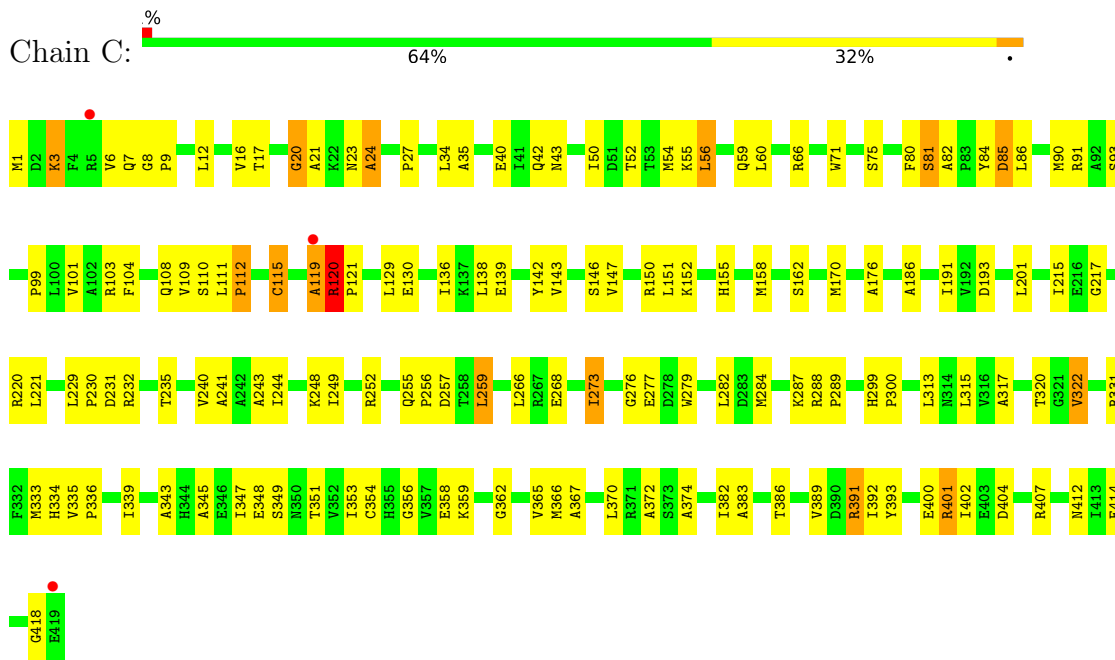
- Molecule 1: UDP-N-acetylglucosamine 1-carboxyvinyltransferase



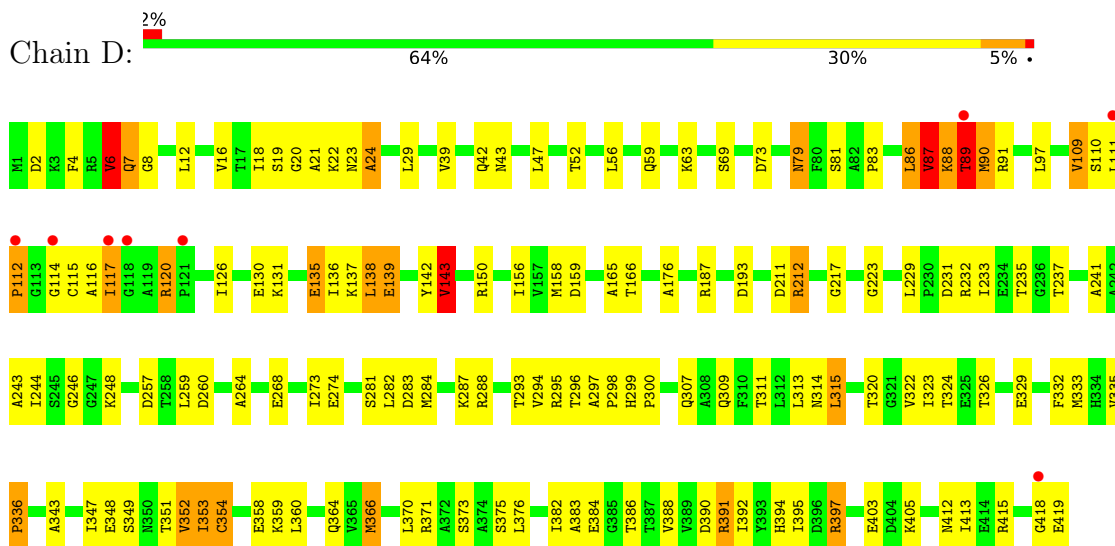
- Molecule 1: UDP-N-acetylglucosamine 1-carboxyvinyltransferase



- Molecule 1: UDP-N-acetylglucosamine 1-carboxyvinyltransferase



• Molecule 1: UDP-N-acetylglucosamine 1-carboxyvinyltransferase



4 Data and refinement statistics

Property	Value	Source
Space group	P 21 21 21	Depositor
Cell constants a, b, c, α , β , γ	80.26Å 100.36Å 210.64Å 90.00° 90.00° 90.00°	Depositor
Resolution (Å)	19.99 – 2.50 19.99 – 2.50	Depositor EDS
% Data completeness (in resolution range)	97.3 (19.99-2.50) 97.1 (19.99-2.50)	Depositor EDS
R_{merge}	0.12	Depositor
R_{sym}	0.08	Depositor
$\langle I/\sigma(I) \rangle$ ¹	4.01 (at 2.50Å)	Xtrriage
Refinement program	CNS 1.3	Depositor
R, R_{free}	0.201 , 0.260 0.202 , 0.260	Depositor DCC
R_{free} test set	1103 reflections (1.90%)	wwPDB-VP
Wilson B-factor (Å ²)	28.0	Xtrriage
Anisotropy	0.205	Xtrriage
Bulk solvent k_{sol} (e/Å ³), B_{sol} (Å ²)	0.34 , 33.6	EDS
L-test for twinning ²	$\langle L \rangle = 0.46$, $\langle L^2 \rangle = 0.28$	Xtrriage
Estimated twinning fraction	No twinning to report.	Xtrriage
F_o, F_c correlation	0.93	EDS
Total number of atoms	13021	wwPDB-VP
Average B, all atoms (Å ²)	28.0	wwPDB-VP

Xtrriage's analysis on translational NCS is as follows: *The largest off-origin peak in the Patterson function is 2.98% of the height of the origin peak. No significant pseudotranslation is detected.*

¹Intensities estimated from amplitudes.

²Theoretical values of $\langle |L| \rangle$, $\langle L^2 \rangle$ for acentric reflections are 0.5, 0.333 respectively for untwinned datasets, and 0.375, 0.2 for perfectly twinned datasets.

5 Model quality [i](#)

5.1 Standard geometry [i](#)

Bond lengths and bond angles in the following residue types are not validated in this section: EDO, ACT, UDP, IAS

The Z score for a bond length (or angle) is the number of standard deviations the observed value is removed from the expected value. A bond length (or angle) with $|Z| > 5$ is considered an outlier worth inspection. RMSZ is the root-mean-square of all Z scores of the bond lengths (or angles).

Mol	Chain	Bond lengths		Bond angles	
		RMSZ	# Z >5	RMSZ	# Z >5
1	A	0.74	5/3178 (0.2%)	1.31	35/4305 (0.8%)
1	B	0.75	7/3178 (0.2%)	1.30	18/4305 (0.4%)
1	C	0.75	2/3178 (0.1%)	1.32	34/4305 (0.8%)
1	D	0.86	9/3178 (0.3%)	1.35	38/4305 (0.9%)
All	All	0.77	23/12712 (0.2%)	1.32	125/17220 (0.7%)

Chiral center outliers are detected by calculating the chiral volume of a chiral center and verifying if the center is modelled as a planar moiety or with the opposite hand. A planarity outlier is detected by checking planarity of atoms in a peptide group, atoms in a mainchain group or atoms of a sidechain that are expected to be planar.

Mol	Chain	#Chirality outliers	#Planarity outliers
1	C	0	1

All (23) bond length outliers are listed below:

Mol	Chain	Res	Type	Atoms	Z	Observed(Å)	Ideal(Å)
1	D	112	PRO	N-CD	-14.44	1.27	1.47
1	D	336	PRO	N-CD	-13.94	1.28	1.47
1	A	300	PRO	N-CD	-13.55	1.28	1.47
1	B	223	GLY	C-O	-6.51	1.17	1.23
1	C	347	ILE	C-O	-6.07	1.17	1.24
1	A	7	GLN	CD-OE1	5.76	1.34	1.23
1	D	87	VAL	C-O	-5.73	1.17	1.24
1	A	314	ASN	CG-OD1	5.72	1.34	1.23
1	D	87	VAL	CA-C	-5.69	1.45	1.52
1	B	7	GLN	CD-OE1	5.61	1.34	1.23
1	D	307	GLN	CD-OE1	5.51	1.34	1.23
1	B	76	ASN	CG-OD1	5.44	1.33	1.23
1	B	219	GLU	C-O	-5.39	1.17	1.24
1	D	109	VAL	C-O	-5.29	1.18	1.24

Continued on next page...

Continued from previous page...

Mol	Chain	Res	Type	Atoms	Z	Observed(Å)	Ideal(Å)
1	A	72	ILE	C-O	-5.25	1.18	1.24
1	D	87	VAL	N-CA	-5.23	1.40	1.46
1	B	224	GLY	CA-C	-5.21	1.45	1.52
1	C	348	GLU	C-O	-5.19	1.18	1.24
1	B	43	ASN	CG-OD1	5.16	1.33	1.23
1	A	42	GLN	CD-OE1	5.12	1.33	1.23
1	D	88	LYS	C-O	-5.04	1.19	1.24
1	B	65	GLU	C-O	-5.02	1.17	1.23
1	D	79	ASN	CG-OD1	5.01	1.33	1.23

All (125) bond angle outliers are listed below:

Mol	Chain	Res	Type	Atoms	Z	Observed(°)	Ideal(°)
1	D	87	VAL	N-CA-C	-16.64	93.65	110.62
1	D	307	GLN	N-CA-C	10.33	122.12	111.07
1	A	24	ALA	N-CA-C	-9.08	102.11	113.55
1	A	90	MET	N-CA-C	8.85	123.78	108.02
1	D	24	ALA	N-CA-C	-8.80	102.46	113.55
1	B	24	ALA	N-CA-C	-8.72	102.56	113.55
1	A	307	GLN	N-CA-C	8.50	121.39	111.02
1	C	80	PHE	N-CA-C	8.43	122.09	112.57
1	B	307	GLN	N-CA-C	8.26	119.91	111.07
1	A	122	VAL	N-CA-C	-8.14	104.94	112.43
1	C	81	SER	N-CA-C	8.01	122.62	109.24
1	C	23	ASN	N-CA-C	7.48	121.51	112.38
1	A	65	GLU	N-CA-C	7.45	121.26	109.50
1	C	152	LYS	N-CA-C	7.34	120.38	108.41
1	A	64	VAL	N-CA-C	7.32	118.44	107.75
1	C	287	LYS	N-CA-C	7.30	120.80	110.50
1	A	23	ASN	N-CA-C	7.28	122.01	113.20
1	D	88	LYS	CB-CA-C	-7.28	108.19	116.63
1	C	150	ARG	N-CA-C	7.25	121.01	110.28
1	C	414	GLU	N-CA-C	7.14	121.33	108.48
1	B	287	LYS	N-CA-C	7.12	121.46	110.20
1	C	3	LYS	N-CA-C	7.02	119.42	108.96
1	C	6	VAL	N-CA-C	7.02	117.99	108.17
1	D	150	ARG	N-CA-C	6.86	121.23	110.32
1	B	90	MET	N-CA-C	6.84	121.53	107.37
1	C	24	ALA	N-CA-C	-6.70	103.77	112.68
1	D	81	SER	N-CA-C	6.62	119.69	108.90
1	D	394	HIS	CB-CG-CD2	-6.60	122.62	131.20
1	D	143	VAL	N-CA-C	-6.59	95.64	109.34

Continued on next page...

Continued from previous page...

Mol	Chain	Res	Type	Atoms	Z	Observed(°)	Ideal(°)
1	A	287	LYS	N-CA-C	6.50	120.47	110.20
1	A	100	LEU	N-CA-C	6.46	118.87	111.11
1	A	273	ILE	N-CA-C	6.44	117.87	108.53
1	A	50	ILE	N-CA-C	-6.36	104.55	110.53
1	D	89	THR	CA-C-N	-6.35	109.42	121.54
1	D	89	THR	C-N-CA	-6.35	109.42	121.54
1	C	60	LEU	N-CA-C	-6.34	105.37	113.23
1	C	358	GLU	N-CA-C	6.34	118.27	111.36
1	D	354	CYS	N-CA-C	6.32	119.03	108.73
1	C	158	MET	N-CA-C	6.30	118.43	108.67
1	A	296	THR	N-CA-C	-6.29	101.18	110.48
1	D	212	ARG	N-CA-C	6.28	118.67	107.80
1	C	259	LEU	N-CA-C	6.24	120.93	112.88
1	A	354	CYS	N-CA-C	6.18	119.01	109.07
1	A	42	GLN	N-CA-C	6.15	119.62	110.52
1	D	333	MET	N-CA-C	6.08	119.54	111.75
1	C	115	CYS	CB-CA-C	6.06	118.79	110.06
1	C	75	SER	N-CA-C	6.03	117.94	111.36
1	A	138	LEU	N-CA-C	6.02	118.22	108.41
1	C	120	ARG	N-CA-C	6.01	117.28	109.64
1	D	90	MET	CA-C-N	6.00	128.60	120.38
1	D	90	MET	C-N-CA	6.00	128.60	120.38
1	B	23	ASN	N-CA-C	5.98	120.31	113.19
1	D	358	GLU	N-CA-C	5.98	117.47	111.07
1	D	23	ASN	N-CA-C	5.98	120.30	113.19
1	C	90	MET	N-CA-C	5.97	119.72	107.37
1	C	162	SER	N-CA-C	5.95	118.10	108.34
1	A	123	ASP	N-CA-C	5.87	118.43	111.33
1	D	287	LYS	N-CA-C	5.81	119.08	110.48
1	D	97	LEU	N-CA-C	5.81	117.28	111.07
1	C	112	PRO	CB-CA-C	-5.78	105.32	112.89
1	B	35	ALA	N-CA-C	5.76	118.07	109.25
1	B	81	SER	N-CA-C	5.75	118.77	109.40
1	B	91	ARG	N-CA-C	5.74	119.09	111.75
1	C	257	ASP	N-CA-C	5.69	119.74	112.34
1	B	302	PHE	CA-C-N	5.65	125.83	119.90
1	B	302	PHE	C-N-CA	5.65	125.83	119.90
1	B	311	THR	N-CA-C	-5.65	105.12	111.28
1	D	288	ARG	CA-C-N	-5.65	114.77	120.31
1	D	288	ARG	C-N-CA	-5.65	114.77	120.31
1	A	358	GLU	N-CA-C	5.63	117.11	110.97
1	C	391	ARG	N-CA-C	5.62	119.18	111.54

Continued on next page...

Continued from previous page...

Mol	Chain	Res	Type	Atoms	Z	Observed(°)	Ideal(°)
1	D	366	MET	N-CA-C	5.62	117.65	108.55
1	A	163	VAL	N-CA-C	-5.61	104.47	110.36
1	A	328	PHE	N-CA-C	5.61	118.41	110.50
1	A	69	SER	N-CA-C	5.60	118.75	110.46
1	D	332	PHE	N-CA-C	5.54	119.73	112.92
1	D	394	HIS	CB-CG-ND1	5.54	131.00	122.70
1	B	115	CYS	N-CA-C	5.52	122.56	110.80
1	A	81	SER	N-CA-C	5.51	117.40	108.26
1	B	162	SER	N-CA-C	5.50	117.81	108.02
1	B	2	ASP	N-CA-C	5.49	118.28	110.10
1	C	359	LYS	N-CA-C	5.48	117.83	108.90
1	A	162	SER	N-CA-C	5.47	117.27	107.80
1	C	402	ILE	N-CA-C	5.47	116.20	110.62
1	A	152	LYS	N-CA-C	5.45	117.63	107.99
1	A	332	PHE	N-CA-C	5.44	119.89	112.88
1	C	20	GLY	N-CA-C	-5.42	105.14	112.14
1	D	89	THR	N-CA-C	-5.42	99.25	110.80
1	B	273	ILE	N-CA-C	5.42	116.38	108.53
1	D	273	ILE	N-CA-C	5.40	116.26	108.48
1	D	86	LEU	N-CA-C	5.40	117.25	111.36
1	C	42	GLN	N-CA-C	5.40	118.51	110.52
1	D	315	LEU	N-CA-C	5.38	117.89	111.71
1	D	90	MET	CA-CB-CG	-5.36	103.38	114.10
1	A	82	ALA	CA-C-N	5.36	125.33	120.03
1	A	82	ALA	C-N-CA	5.36	125.33	120.03
1	B	100	LEU	N-CA-C	5.35	117.11	111.28
1	C	349	SER	CB-CA-C	-5.34	109.97	117.23
1	C	35	ALA	N-CA-C	5.32	118.22	109.76
1	D	311	THR	N-CA-C	-5.29	105.60	111.36
1	D	6	VAL	N-CA-C	5.28	116.19	108.53
1	C	139	GLU	N-CA-C	5.24	116.37	108.46
1	A	86	LEU	N-CA-C	5.21	117.76	111.40
1	A	88	LYS	N-CA-C	5.21	117.64	111.33
1	C	104	PHE	N-CA-C	5.21	119.91	113.50
1	D	166	THR	N-CA-C	-5.21	105.68	111.36
1	C	59	GLN	N-CA-C	5.20	121.87	110.80
1	D	288	ARG	N-CA-C	-5.17	102.69	110.24
1	A	13	GLN	N-CA-C	5.17	116.70	108.79
1	A	307	GLN	CB-CA-C	5.14	119.10	110.92
1	D	413	ILE	N-CA-C	5.14	116.06	108.45
1	D	257	ASP	N-CA-C	5.12	118.30	111.75
1	A	255	GLN	CA-C-N	5.12	126.23	119.84

Continued on next page...

Continued from previous page...

Mol	Chain	Res	Type	Atoms	Z	Observed(°)	Ideal(°)
1	A	255	GLN	C-N-CA	5.12	126.23	119.84
1	B	339	ILE	N-CA-C	-5.12	105.40	110.62
1	A	333	MET	N-CA-C	5.11	118.30	111.75
1	B	85	ASP	N-CA-C	5.11	117.25	111.02
1	D	156	ILE	N-CA-C	5.07	115.15	107.75
1	C	273	ILE	N-CA-C	5.06	115.14	107.80
1	D	139	GLU	N-CA-C	5.06	115.98	108.60
1	A	48	LYS	N-CA-C	5.05	117.45	111.33
1	C	277	GLU	N-CA-C	5.05	116.86	111.36
1	C	374	ALA	N-CA-C	-5.03	105.92	111.71
1	D	246	GLY	N-CA-C	-5.03	107.11	114.61
1	A	413	ILE	N-CA-C	5.02	115.88	108.45

There are no chirality outliers.

All (1) planarity outliers are listed below:

Mol	Chain	Res	Type	Group
1	C	119	ALA	Peptide

5.2 Too-close contacts [i](#)

In the following table, the Non-H and H(model) columns list the number of non-hydrogen atoms and hydrogen atoms in the chain respectively. The H(added) column lists the number of hydrogen atoms added and optimized by MolProbity. The Clashes column lists the number of clashes within the asymmetric unit, whereas Symm-Clashes lists symmetry-related clashes.

Mol	Chain	Non-H	H(model)	H(added)	Clashes	Symm-Clashes
1	A	3142	0	3216	144	0
1	B	3142	0	3216	105	0
1	C	3142	0	3216	108	0
1	D	3142	0	3216	119	0
2	A	16	0	24	3	0
2	B	16	0	24	4	0
2	C	16	0	24	3	0
2	D	16	0	24	0	0
3	A	25	0	11	3	0
4	C	4	0	3	1	0
4	D	4	0	3	0	0
5	A	75	0	0	5	0
5	B	93	0	0	2	0
5	C	101	0	0	7	0

Continued on next page...

Continued from previous page...

Mol	Chain	Non-H	H(model)	H(added)	Clashes	Symm-Clashes
5	D	87	0	0	2	0
All	All	13021	0	12977	451	0

The all-atom clashscore is defined as the number of clashes found per 1000 atoms (including hydrogen atoms). The all-atom clashscore for this structure is 18.

All (451) close contacts within the same asymmetric unit are listed below, sorted by their clash magnitude.

Atom-1	Atom-2	Interatomic distance (Å)	Clash overlap (Å)
1:D:89:THR:HG22	1:D:90:MET:H	1.21	1.05
1:B:76:ASN:HB3	5:B:693:HOH:O	1.63	0.98
1:D:86:LEU:O	1:D:88:LYS:HB2	1.64	0.97
1:C:230:PRO:HB2	2:C:505:EDO:H12	1.47	0.93
1:A:115:CYS:O	1:A:140:GLU:OE2	1.88	0.92
1:B:15:GLU:HG2	1:B:250:VAL:HB	1.52	0.90
1:A:1:MET:N	1:A:419:GLU:C	2.31	0.88
1:C:1:MET:HE3	1:C:391:ARG:HD3	1.56	0.85
1:A:74:ALA:O	1:A:77:VAL:HG23	1.76	0.85
1:B:4:PHE:CD2	1:B:392:ILE:HG21	2.12	0.85
1:D:91:ARG:HD2	1:D:120:ARG:HD3	1.61	0.83
1:C:401:ARG:NH2	5:C:689:HOH:O	2.09	0.82
1:D:89:THR:HG22	1:D:90:MET:N	1.87	0.82
1:A:115:CYS:HB3	1:B:131:LYS:HD3	1.64	0.80
1:A:418:GLY:O	1:A:419:GLU:HB2	1.82	0.79
1:A:115:CYS:HB3	1:B:131:LYS:CD	2.13	0.79
1:C:255:GLN:HB3	2:C:505:EDO:H11	1.67	0.77
1:B:334:HIS:HB3	1:B:372:ALA:HB1	1.68	0.76
1:D:237:THR:HG23	1:D:309:GLN:NE2	2.01	0.75
1:D:359:LYS:HE3	1:D:384:GLU:HB2	1.68	0.75
1:D:364:GLN:HG2	1:D:388:VAL:HB	1.68	0.75
1:A:416:VAL:HG12	1:A:417:LYS:N	2.01	0.75
1:D:86:LEU:O	1:D:87:VAL:C	2.29	0.73
1:D:89:THR:CG2	1:D:90:MET:H	2.00	0.73
1:A:91:ARG:HG3	1:A:91:ARG:HH11	1.55	0.72
1:C:334:HIS:HB3	1:C:372:ALA:HB1	1.71	0.72
1:C:366:MET:SD	1:C:367:ALA:N	2.62	0.72
1:A:1:MET:H3	1:A:419:GLU:C	1.98	0.71
1:A:418:GLY:O	1:A:419:GLU:CB	2.38	0.71
1:C:81:SER:HB2	1:C:108:GLN:HG3	1.73	0.71
1:B:126:ILE:HG23	1:B:136:ILE:HG21	1.73	0.71
1:C:1:MET:HG2	1:C:391:ARG:HG2	1.73	0.71

Continued on next page...

Continued from previous page...

Atom-1	Atom-2	Interatomic distance (Å)	Clash overlap (Å)
1:C:56:LEU:C	1:C:56:LEU:HD23	2.16	0.70
1:D:299:HIS:ND1	1:D:300:PRO:HA	2.07	0.70
1:D:143:VAL:O	1:D:143:VAL:HG13	1.92	0.70
1:A:232:ARG:HB2	1:A:259:LEU:HD21	1.75	0.69
1:D:111:LEU:HD11	1:D:143:VAL:HB	1.73	0.69
1:B:333:MET:O	1:B:336:PRO:HD2	1.93	0.69
1:A:7:GLN:HB3	1:A:412:ASN:ND2	2.09	0.68
1:A:131:LYS:HZ3	1:B:115:CYS:H	1.40	0.68
1:A:36:GLU:HG2	1:A:103:ARG:NH2	2.08	0.68
1:D:7:GLN:HB2	1:D:412:ASN:OD1	1.94	0.68
1:C:317:ALA:O	1:C:356:GLY:HA3	1.94	0.67
1:A:1:MET:H1	1:A:419:GLU:C	2.02	0.67
1:D:193:ASP:CB	1:D:229:LEU:HD22	2.24	0.67
1:D:176:ALA:O	1:D:217:GLY:HA3	1.95	0.67
1:D:403:GLU:OE2	1:D:415:ARG:NE	2.29	0.66
1:C:81:SER:HB2	1:C:108:GLN:CG	2.26	0.65
1:A:130:GLU:OE2	1:B:138:LEU:HB3	1.96	0.65
1:A:36:GLU:HG2	1:A:103:ARG:HH21	1.61	0.65
1:D:109:VAL:O	1:D:143:VAL:HG12	1.97	0.65
1:B:34:LEU:HB3	1:B:221:LEU:HD12	1.80	0.64
1:A:110:SER:O	1:A:112:PRO:HD3	1.97	0.64
1:D:237:THR:HG23	1:D:309:GLN:HE21	1.63	0.63
1:C:84:TYR:C	1:C:86:LEU:H	2.05	0.63
1:A:91:ARG:HG3	1:A:91:ARG:NH1	2.11	0.62
1:C:101:VAL:HG22	1:C:147:VAL:HG12	1.80	0.62
1:D:366:MET:HG3	1:D:391:ARG:HG3	1.79	0.62
1:C:130:GLU:HG2	1:D:115:CYS:SG	2.39	0.62
1:C:243:ALA:HA	1:C:284:MET:CG	2.30	0.62
1:B:299:HIS:CG	1:B:300:PRO:HA	2.35	0.62
1:C:119:ALA:HB2	1:D:159:ASP:OD2	1.99	0.62
1:D:232:ARG:HB2	1:D:259:LEU:HD21	1.80	0.62
1:B:15:GLU:CG	1:B:250:VAL:HB	2.29	0.62
1:A:113:GLY:CA	1:A:116:ALA:HB2	2.30	0.62
1:A:416:VAL:CG1	1:A:417:LYS:N	2.62	0.62
1:A:330:ASN:ND2	1:A:333:MET:HE2	2.14	0.62
1:A:334:HIS:HB3	2:A:501:EDO:H22	1.82	0.61
1:A:101:VAL:HG11	1:A:145:ALA:HB3	1.81	0.61
1:B:400:GLU:C	1:B:401:ARG:HG3	2.25	0.61
1:D:309:GLN:OE1	1:D:375:SER:HB3	1.99	0.61
1:A:419:GLU:O	1:A:419:GLU:HG2	2.01	0.61
1:D:12:LEU:HD12	1:D:241:ALA:HB1	1.83	0.61

Continued on next page...

Continued from previous page...

Atom-1	Atom-2	Interatomic distance (Å)	Clash overlap (Å)
1:A:212:ARG:HG2	5:A:646:HOH:O	1.99	0.60
1:C:8:GLY:HA3	1:C:383:ALA:O	2.01	0.60
1:C:52:THR:HA	1:C:55:LYS:HD2	1.84	0.60
1:B:243:ALA:HA	1:B:284:MET:CG	2.31	0.60
1:A:313:LEU:C	1:A:313:LEU:HD23	2.27	0.60
1:D:299:HIS:CG	1:D:300:PRO:HA	2.37	0.60
1:A:62:THR:HG22	1:A:74:ALA:HA	1.84	0.60
1:D:56:LEU:HB2	1:D:86:LEU:HD22	1.83	0.59
1:B:330:ASN:ND2	1:D:349:SER:O	2.29	0.59
1:D:56:LEU:HD23	1:D:56:LEU:C	2.26	0.59
1:A:276:GLY:HA3	1:A:279:TRP:NE1	2.18	0.59
1:B:176:ALA:O	1:B:217:GLY:HA3	2.03	0.59
1:C:407:ARG:HD3	5:C:688:HOH:O	2.02	0.59
5:C:683:HOH:O	1:D:139:GLU:HG3	2.02	0.59
1:B:335:VAL:HB	1:B:336:PRO:HD3	1.83	0.59
1:D:112:PRO:O	1:D:112:PRO:HG2	2.02	0.59
1:D:366:MET:HB2	1:D:390:ASP:HB3	1.84	0.58
1:A:112:PRO:O	1:A:114:GLY:N	2.31	0.58
1:A:153:GLY:HA2	1:A:180:THR:OG1	2.02	0.58
1:C:66:ARG:NH1	5:C:643:HOH:O	2.36	0.58
1:D:89:THR:O	1:D:90:MET:C	2.40	0.58
1:A:369:ASP:HB3	2:A:501:EDO:H11	1.86	0.58
1:D:366:MET:HE2	1:D:391:ARG:HD2	1.86	0.58
1:C:243:ALA:O	1:C:284:MET:HE2	2.04	0.58
1:D:52:THR:HG23	1:D:88:LYS:HD2	1.86	0.58
1:A:131:LYS:NZ	1:B:115:CYS:H	2.02	0.57
1:C:119:ALA:HB2	1:D:159:ASP:CG	2.28	0.57
1:A:56:LEU:C	1:A:56:LEU:HD23	2.30	0.57
1:C:85:ASP:O	1:C:86:LEU:HG	2.05	0.57
1:A:317:ALA:O	1:A:356:GLY:HA3	2.04	0.57
1:A:1:MET:N	1:A:419:GLU:O	2.38	0.57
1:D:264:ALA:O	1:D:268:GLU:HG3	2.05	0.57
1:A:11:ARG:HD2	5:A:660:HOH:O	2.04	0.57
1:D:4:PHE:CD2	1:D:392:ILE:HG21	2.40	0.56
1:D:313:LEU:C	1:D:313:LEU:HD23	2.30	0.56
1:A:80:PHE:HD1	1:A:100:LEU:HD22	1.70	0.56
1:A:211:ASP:OD2	1:D:295:ARG:HD3	2.05	0.56
1:A:311:THR:HA	1:A:323:ILE:HD12	1.87	0.56
1:A:126:ILE:HG12	1:A:143:VAL:HG21	1.87	0.56
1:A:150:ARG:NH2	1:A:219:GLU:O	2.37	0.56
1:B:39:VAL:HG12	1:B:223:GLY:HA2	1.88	0.56

Continued on next page...

Continued from previous page...

Atom-1	Atom-2	Interatomic distance (Å)	Clash overlap (Å)
1:B:41:ILE:HD11	1:B:197:PHE:CE1	2.41	0.56
1:D:21:ALA:HA	1:D:231:ASP:HB2	1.88	0.56
1:A:127:PHE:HE1	1:B:138:LEU:HD11	1.70	0.56
1:D:111:LEU:HD21	1:D:143:VAL:HG11	1.88	0.56
1:C:366:MET:HE2	1:C:391:ARG:NH2	2.21	0.55
1:B:416:VAL:O	1:B:416:VAL:HG13	2.05	0.55
1:C:7:GLN:HB2	1:C:412:ASN:HB3	1.88	0.55
1:D:52:THR:CG2	1:D:88:LYS:HD2	2.37	0.55
1:C:288:ARG:HG3	1:C:289:PRO:HD2	1.89	0.55
1:D:282:LEU:HD23	1:D:282:LEU:C	2.31	0.55
1:B:12:LEU:CD1	1:B:241:ALA:HB1	2.37	0.55
1:A:103:ARG:HD3	1:A:104:PHE:CE2	2.42	0.55
1:D:12:LEU:CD1	1:D:241:ALA:HB1	2.35	0.55
1:B:320:THR:HA	1:B:354:CYS:O	2.07	0.55
1:C:370:LEU:HD21	5:C:675:HOH:O	2.07	0.55
1:D:259:LEU:O	1:D:260:ASP:C	2.50	0.55
1:C:40:GLU:HG3	1:C:71:TRP:NE1	2.22	0.55
1:C:103:ARG:HH21	1:C:103:ARG:HG3	1.72	0.55
1:C:143:VAL:O	1:C:143:VAL:HG13	2.06	0.55
1:B:243:ALA:HA	1:B:284:MET:HG3	1.88	0.54
1:B:396:ASP:CG	1:B:415:ARG:HH22	2.15	0.54
1:C:335:VAL:HB	1:C:336:PRO:HD3	1.89	0.54
1:D:8:GLY:HA3	1:D:383:ALA:O	2.08	0.54
1:D:19:SER:HB2	5:D:637:HOH:O	2.07	0.54
1:A:113:GLY:HA3	1:A:116:ALA:HB2	1.88	0.54
1:D:187:ARG:HD2	1:D:211:ASP:OD2	2.08	0.54
1:D:243:ALA:HA	1:D:284:MET:CG	2.38	0.54
1:D:297:ALA:HB1	1:D:298:PRO:CD	2.37	0.54
1:A:151:LEU:CD1	1:A:172:ALA:HB1	2.37	0.54
1:B:333:MET:HE2	1:D:336:PRO:HG2	1.89	0.54
1:D:86:LEU:C	1:D:88:LYS:N	2.55	0.54
1:D:22:LYS:HB2	1:D:47:LEU:HD12	1.91	0.53
1:A:115:CYS:CB	1:B:131:LYS:HD2	2.38	0.53
1:C:322:VAL:HG13	1:C:353:ILE:HD13	1.91	0.53
1:D:243:ALA:O	1:D:284:MET:HE2	2.07	0.53
1:D:397:ARG:HD3	5:D:676:HOH:O	2.08	0.53
1:B:294:VAL:HB	1:B:323:ILE:HD13	1.91	0.53
1:A:193:ASP:CB	1:A:229:LEU:HD22	2.38	0.53
1:C:16:VAL:CG1	1:C:249:ILE:HD11	2.39	0.53
1:C:16:VAL:HG12	1:C:249:ILE:HD11	1.90	0.53
1:A:115:CYS:HB3	1:B:131:LYS:HD2	1.90	0.53

Continued on next page...

Continued from previous page...

Atom-1	Atom-2	Interatomic distance (Å)	Clash overlap (Å)
1:A:299:HIS:CG	1:A:300:PRO:HA	2.43	0.53
1:C:111:LEU:HD23	1:C:142:TYR:O	2.09	0.53
1:B:40:GLU:HG3	1:B:71:TRP:NE1	2.23	0.52
1:C:391:ARG:HD2	1:C:393:TYR:HE2	1.74	0.52
1:B:55:LYS:HE3	1:B:86:LEU:CD2	2.39	0.52
1:D:63:LYS:HB2	1:D:73:ASP:HB3	1.91	0.52
1:A:315:LEU:HD12	1:A:338:LEU:HD13	1.92	0.52
1:B:370:LEU:HD13	1:B:394:HIS:O	2.09	0.52
1:C:320:THR:HA	1:C:354:CYS:O	2.10	0.52
1:D:324:THR:HG23	1:D:351:THR:HG22	1.90	0.52
1:A:314:ASN:HB3	1:A:354:CYS:HB2	1.92	0.52
1:D:18:ILE:HD12	1:D:235:THR:HA	1.92	0.52
1:D:248:LYS:HD2	1:D:283:ASP:OD2	2.09	0.52
1:A:24:ALA:O	1:A:27:PRO:HG2	2.10	0.52
1:B:158:MET:HE1	1:B:165:ALA:CB	2.40	0.52
1:B:407:ARG:NH1	1:B:413:ILE:O	2.41	0.52
1:D:18:ILE:CD1	1:D:235:THR:HA	2.40	0.52
1:C:186:ALA:HB3	1:C:191:ILE:CD1	2.39	0.52
1:D:403:GLU:OE2	1:D:415:ARG:NH2	2.43	0.52
1:A:56:LEU:HD23	1:A:56:LEU:O	2.09	0.52
1:A:150:ARG:HD3	1:A:175:LEU:O	2.10	0.52
1:D:335:VAL:HG21	1:D:352:VAL:HG21	1.92	0.52
1:B:144:LYS:HB3	2:B:504:EDO:H21	1.91	0.51
1:A:320:THR:HA	1:A:354:CYS:O	2.08	0.51
1:C:362:GLY:HA3	1:C:386:THR:O	2.11	0.51
1:C:244:ILE:HD12	1:C:382:ILE:HD13	1.92	0.51
1:B:333:MET:CE	1:D:336:PRO:HG2	2.40	0.51
1:A:359:LYS:HD2	1:A:384:GLU:HB2	1.92	0.51
1:B:402:ILE:CG2	1:B:403:GLU:N	2.74	0.51
1:A:152:LYS:O	1:A:153:GLY:C	2.53	0.51
1:A:282:LEU:C	1:A:282:LEU:HD23	2.36	0.51
1:B:402:ILE:HG23	1:B:403:GLU:N	2.24	0.51
1:A:340:ARG:NH2	1:A:364:GLN:O	2.39	0.51
1:A:362:GLY:HA3	1:A:386:THR:O	2.10	0.51
1:D:89:THR:CG2	1:D:90:MET:N	2.57	0.51
1:D:193:ASP:HB2	1:D:229:LEU:HD22	1.92	0.51
1:B:109:VAL:O	1:B:143:VAL:HG12	2.11	0.51
1:D:193:ASP:CG	1:D:229:LEU:HD22	2.36	0.51
1:B:143:VAL:HG13	1:B:143:VAL:O	2.10	0.50
1:B:2:ASP:OD2	1:B:415:ARG:HD3	2.11	0.50
1:B:233:ILE:HG21	1:B:371:ARG:CZ	2.42	0.50

Continued on next page...

Continued from previous page...

Atom-1	Atom-2	Interatomic distance (Å)	Clash overlap (Å)
1:C:235:THR:HB	1:C:259:LEU:HD11	1.93	0.50
1:C:276:GLY:HA3	1:C:279:TRP:NE1	2.26	0.50
1:D:158:MET:HE1	1:D:165:ALA:HB3	1.93	0.50
1:D:89:THR:O	1:D:90:MET:O	2.30	0.50
1:D:112:PRO:O	1:D:112:PRO:CG	2.58	0.50
1:A:65:GLU:O	1:A:71:TRP:N	2.42	0.50
1:B:55:LYS:HE3	1:B:86:LEU:HD22	1.92	0.50
1:B:77:VAL:HB	1:B:104:PHE:CZ	2.46	0.50
1:A:267:ARG:HD3	2:A:503:EDO:H22	1.93	0.50
1:B:12:LEU:HD12	1:B:241:ALA:HB1	1.94	0.50
1:C:186:ALA:HB3	1:C:191:ILE:HD13	1.93	0.50
1:D:87:VAL:O	1:D:89:THR:O	2.29	0.50
1:A:158:MET:HE2	1:A:182:ILE:CG2	2.42	0.50
1:B:3:LYS:HB2	1:B:416:VAL:CG1	2.42	0.50
1:B:63:LYS:HB2	1:B:73:ASP:HB3	1.94	0.50
1:A:115:CYS:CB	1:B:131:LYS:CD	2.87	0.50
1:C:56:LEU:HD23	1:C:56:LEU:O	2.12	0.50
1:C:243:ALA:HA	1:C:284:MET:HG3	1.92	0.50
1:A:276:GLY:HA3	1:A:279:TRP:CE2	2.47	0.50
1:B:34:LEU:CB	1:B:221:LEU:HD12	2.40	0.50
1:C:84:TYR:HE1	1:C:112:PRO:HA	1.77	0.50
1:C:109:VAL:O	1:C:143:VAL:HG12	2.11	0.50
1:A:266:LEU:HD13	1:A:282:LEU:CD1	2.42	0.49
1:B:187:ARG:HB3	1:B:209:GLY:O	2.12	0.49
1:D:347:ILE:HG12	1:D:352:VAL:HG22	1.94	0.49
1:D:353:ILE:N	1:D:353:ILE:HD13	2.26	0.49
1:C:40:GLU:HG3	1:C:71:TRP:CD1	2.47	0.49
1:C:273:ILE:HD11	1:C:282:LEU:HD12	1.94	0.49
1:A:114:GLY:O	1:A:119:ALA:CB	2.60	0.49
1:B:157:VAL:HA	1:B:183:GLU:HB2	1.93	0.49
1:B:207:GLY:O	1:B:208:GLN:C	2.54	0.49
1:D:335:VAL:HB	1:D:336:PRO:HD3	1.93	0.49
1:A:36:GLU:OE2	1:A:220:ARG:HD2	2.13	0.49
1:C:21:ALA:HB2	1:C:231:ASP:HA	1.94	0.49
1:A:416:VAL:CG1	1:A:417:LYS:H	2.26	0.49
1:B:62:THR:HG22	1:B:64:VAL:HG22	1.95	0.49
1:B:103:ARG:HB2	1:B:175:LEU:CD1	2.42	0.49
1:B:299:HIS:ND1	1:B:300:PRO:HA	2.27	0.49
1:B:240:VAL:O	1:B:244:ILE:HG23	2.12	0.49
1:C:1:MET:HB3	5:C:646:HOH:O	2.12	0.49
1:C:320:THR:HG23	1:C:354:CYS:O	2.13	0.49

Continued on next page...

Continued from previous page...

Atom-1	Atom-2	Interatomic distance (Å)	Clash overlap (Å)
1:A:359:LYS:CD	1:A:384:GLU:HB2	2.43	0.48
1:A:22:LYS:HE2	1:A:49:ASP:OD2	2.13	0.48
1:A:67:IAS:CG	1:A:69:SER:N	2.71	0.48
1:B:2:ASP:HB2	5:B:655:HOH:O	2.13	0.48
1:C:20:GLY:HA3	1:C:43:ASN:O	2.13	0.48
1:B:3:LYS:HB2	1:B:416:VAL:HG13	1.95	0.48
1:B:9:PRO:HD3	1:B:384:GLU:HA	1.94	0.48
1:B:332:PHE:CZ	1:B:352:VAL:HG23	2.48	0.48
1:A:266:LEU:HD13	1:A:282:LEU:HD12	1.95	0.48
1:B:158:MET:HE1	1:B:165:ALA:HB3	1.95	0.48
1:D:4:PHE:CE1	1:D:403:GLU:HB3	2.49	0.48
1:D:297:ALA:HB1	1:D:298:PRO:HD2	1.95	0.48
1:A:170:MET:HA	1:A:215:ILE:HD13	1.94	0.48
1:B:282:LEU:C	1:B:282:LEU:HD23	2.39	0.48
1:D:42:GLN:HB3	1:D:69:SER:OG	2.13	0.48
1:A:158:MET:HE3	5:A:601:HOH:O	2.13	0.48
1:B:21:ALA:HA	1:B:231:ASP:HB2	1.95	0.48
1:B:80:PHE:HD1	1:B:100:LEU:HD22	1.79	0.48
1:B:144:LYS:CB	2:B:504:EDO:H21	2.44	0.48
1:D:315:LEU:HD22	1:D:343:ALA:HB1	1.95	0.48
1:B:366:MET:SD	1:B:366:MET:C	2.97	0.48
1:A:160:LYS:HB2	1:A:160:LYS:NZ	2.29	0.48
1:A:255:GLN:HG2	1:A:257:ASP:OD1	2.14	0.48
1:A:413:ILE:O	1:A:414:GLU:OE1	2.32	0.48
1:C:366:MET:SD	1:C:366:MET:C	2.97	0.47
1:D:143:VAL:O	1:D:143:VAL:CG1	2.61	0.47
1:D:39:VAL:HG12	1:D:223:GLY:HA2	1.96	0.47
1:C:176:ALA:O	1:C:217:GLY:HA3	2.14	0.47
1:A:161:VAL:HA	5:A:601:HOH:O	2.14	0.47
1:A:170:MET:HA	1:A:215:ILE:CD1	2.43	0.47
1:B:4:PHE:CG	1:B:392:ILE:HG21	2.49	0.47
1:C:240:VAL:O	1:C:244:ILE:HG12	2.14	0.47
1:A:176:ALA:O	1:A:217:GLY:HA3	2.14	0.47
1:A:197:PHE:O	1:A:200:ALA:HB3	2.15	0.47
1:A:336:PRO:HG2	1:C:333:MET:HE2	1.97	0.47
1:D:418:GLY:O	1:D:419:GLU:C	2.58	0.47
1:A:293:THR:OG1	1:D:212:ARG:HD2	2.14	0.47
1:A:370:LEU:HG	1:A:371:ARG:HD3	1.96	0.47
1:C:24:ALA:O	1:C:27:PRO:HD2	2.15	0.47
1:C:111:LEU:CD2	1:C:142:TYR:O	2.63	0.47
1:A:91:ARG:HD2	1:A:120:ARG:NH1	2.30	0.47

Continued on next page...

Continued from previous page...

Atom-1	Atom-2	Interatomic distance (Å)	Clash overlap (Å)
1:C:333:MET:O	1:C:336:PRO:HD2	2.15	0.47
1:B:212:ARG:HD3	1:C:268:GLU:CD	2.40	0.47
1:A:69:SER:HB2	1:A:71:TRP:CH2	2.50	0.47
1:A:81:SER:HA	1:A:108:GLN:O	2.15	0.47
1:B:146:SER:CB	2:B:504:EDO:H11	2.45	0.47
1:C:1:MET:CG	1:C:391:ARG:HG2	2.44	0.46
1:A:243:ALA:HA	1:A:284:MET:CG	2.45	0.46
1:A:256:PRO:HG2	1:A:276:GLY:O	2.15	0.46
1:B:3:LYS:CD	1:B:419:GLU:OE1	2.64	0.46
1:C:315:LEU:HD21	1:C:345:ALA:HB2	1.97	0.46
1:B:350:ASN:HB3	1:D:329:GLU:OE2	2.15	0.46
1:A:159:ASP:OD1	1:B:119:ALA:HB3	2.16	0.46
1:A:277:GLU:O	1:A:277:GLU:HG2	2.14	0.46
1:A:20:GLY:HA3	1:A:43:ASN:O	2.15	0.46
1:A:138:LEU:CD2	1:A:143:VAL:HG23	2.46	0.46
1:A:330:ASN:HD21	1:A:333:MET:HE2	1.79	0.46
1:C:82:ALA:HB3	1:C:109:VAL:HA	1.97	0.46
1:D:294:VAL:HB	1:D:323:ILE:HD13	1.98	0.46
1:A:113:GLY:C	1:A:116:ALA:HB2	2.40	0.46
1:B:285:HIS:C	1:B:287:LYS:H	2.23	0.46
1:C:232:ARG:HA	2:C:505:EDO:H21	1.97	0.46
1:A:160:LYS:HD2	3:A:505:UDP:H1'	1.97	0.46
1:A:3:LYS:HG2	1:A:390:ASP:OD2	2.15	0.46
1:A:12:LEU:CD1	1:A:241:ALA:HB1	2.45	0.46
1:A:160:LYS:HB2	1:A:160:LYS:HZ3	1.80	0.46
1:D:2:ASP:OD2	1:D:415:ARG:HD3	2.16	0.46
1:A:122:VAL:HG22	1:A:122:VAL:O	2.16	0.46
1:B:41:ILE:HG22	1:B:44:VAL:CG2	2.46	0.46
1:B:146:SER:HB3	2:B:504:EDO:H11	1.97	0.46
1:B:188:GLU:HA	1:B:189:PRO:HD3	1.89	0.46
1:C:120:ARG:HA	1:C:121:PRO:HD3	1.67	0.46
1:A:333:MET:O	1:A:336:PRO:HD2	2.16	0.45
1:C:193:ASP:CB	1:C:229:LEU:HD22	2.47	0.45
1:C:266:LEU:HD13	1:C:282:LEU:CD1	2.46	0.45
1:C:334:HIS:HB3	1:C:372:ALA:CB	2.42	0.45
1:A:87:VAL:HG12	1:A:93:SER:HB3	1.98	0.45
1:A:173:ALA:HB3	1:A:215:ILE:HD13	1.97	0.45
1:C:193:ASP:CG	1:C:229:LEU:HD22	2.41	0.45
1:C:1:MET:CE	1:C:391:ARG:HD3	2.38	0.45
1:C:101:VAL:HG23	1:C:146:SER:HA	1.98	0.45
1:C:136:ILE:HB	1:D:138:LEU:HD23	1.99	0.45

Continued on next page...

Continued from previous page...

Atom-1	Atom-2	Interatomic distance (Å)	Clash overlap (Å)
1:D:112:PRO:HG3	1:D:120:ARG:HG3	1.99	0.45
1:B:3:LYS:HD2	1:B:419:GLU:HB3	1.98	0.45
1:D:16:VAL:HG23	1:D:405:LYS:HB3	1.98	0.45
1:A:289:PRO:O	1:A:317:ALA:HB1	2.16	0.45
1:B:4:PHE:CD2	1:B:392:ILE:CG2	2.92	0.45
1:A:346:GLU:OE2	1:A:353:ILE:HB	2.17	0.45
1:D:87:VAL:HG21	1:D:110:SER:O	2.16	0.45
1:C:248:LYS:HA	1:C:282:LEU:O	2.17	0.45
1:A:309:GLN:HG3	1:A:375:SER:OG	2.17	0.44
1:A:373:SER:C	1:A:395:ILE:HD11	2.41	0.44
1:C:34:LEU:HD21	1:C:99:PRO:HA	1.99	0.44
1:C:391:ARG:HD2	1:C:393:TYR:CE2	2.51	0.44
1:D:59:GLN:NE2	1:D:79:ASN:OD1	2.43	0.44
1:D:91:ARG:CD	1:D:120:ARG:HD3	2.40	0.44
1:D:142:TYR:HB3	1:D:143:VAL:H	1.56	0.44
1:D:274:GLU:HB2	1:D:281:SER:OG	2.17	0.44
1:A:30:PHE:CZ	1:A:53:THR:HG23	2.51	0.44
1:A:334:HIS:CG	1:A:372:ALA:HB1	2.53	0.44
1:C:84:TYR:O	1:C:86:LEU:N	2.48	0.44
1:A:137:LYS:HE2	1:A:142:TYR:OH	2.18	0.44
1:A:183:GLU:HG2	1:D:293:THR:OG1	2.18	0.44
1:D:116:ALA:O	1:D:117:ILE:C	2.59	0.44
1:B:57:LEU:O	1:B:62:THR:HB	2.17	0.44
1:C:84:TYR:C	1:C:86:LEU:N	2.72	0.44
1:B:265:LYS:HD3	1:B:265:LYS:HA	1.93	0.44
1:A:119:ALA:O	1:A:120:ARG:C	2.60	0.44
1:B:14:GLY:O	1:B:249:ILE:HA	2.18	0.44
1:B:288:ARG:HG3	1:B:289:PRO:HD2	2.00	0.44
1:A:4:PHE:CD2	1:A:392:ILE:HG21	2.53	0.44
1:A:142:TYR:CD1	1:A:142:TYR:C	2.96	0.44
1:C:331:ARG:O	1:C:331:ARG:HG2	2.18	0.44
1:D:91:ARG:CZ	1:D:91:ARG:HB3	2.48	0.44
1:A:131:LYS:NZ	1:B:115:CYS:N	2.66	0.44
1:D:6:VAL:O	1:D:386:THR:HA	2.18	0.44
1:C:7:GLN:HB2	1:C:412:ASN:CG	2.43	0.44
1:C:7:GLN:HB2	1:C:412:ASN:CB	2.48	0.44
1:B:24:ALA:O	1:B:28:ILE:HG13	2.18	0.43
1:D:83:PRO:CG	1:D:86:LEU:HD12	2.47	0.43
1:A:233:ILE:HG21	1:A:371:ARG:CZ	2.48	0.43
1:C:84:TYR:HB2	1:C:110:SER:OG	2.19	0.43
1:C:365:VAL:O	1:C:389:VAL:HA	2.18	0.43

Continued on next page...

Continued from previous page...

Atom-1	Atom-2	Interatomic distance (Å)	Clash overlap (Å)
1:B:231:ASP:C	1:B:231:ASP:OD1	2.60	0.43
1:A:46:LYS:N	1:A:400:GLU:OE2	2.44	0.43
1:A:233:ILE:HG21	1:A:371:ARG:NE	2.33	0.43
1:A:302:PHE:HZ	1:A:310:PHE:CD1	2.36	0.43
1:D:91:ARG:HG2	1:D:91:ARG:HH11	1.83	0.43
3:A:505:UDP:O3B	3:A:505:UDP:H3'	2.18	0.43
1:B:3:LYS:HD3	1:B:419:GLU:OE1	2.18	0.43
1:C:84:TYR:CE1	1:C:112:PRO:HA	2.54	0.43
1:C:299:HIS:CG	1:C:300:PRO:HA	2.53	0.43
1:D:114:GLY:O	1:D:115:CYS:HB2	2.19	0.43
1:C:12:LEU:HD13	1:C:241:ALA:HB1	1.99	0.43
1:A:12:LEU:HD13	1:A:241:ALA:HB1	2.01	0.43
1:B:112:PRO:HG2	1:B:113:GLY:H	1.83	0.43
1:A:308:ALA:HB1	1:A:372:ALA:HA	2.00	0.43
1:B:12:LEU:HD13	1:B:241:ALA:HB1	2.01	0.43
1:B:392:ILE:O	1:B:393:TYR:C	2.62	0.43
1:A:370:LEU:HD23	1:A:370:LEU:N	2.33	0.43
1:A:112:PRO:C	1:A:114:GLY:N	2.77	0.43
1:A:370:LEU:HB3	5:A:622:HOH:O	2.19	0.43
1:C:7:GLN:HA	1:C:7:GLN:NE2	2.34	0.43
1:D:59:GLN:NE2	1:D:59:GLN:O	2.52	0.43
1:C:91:ARG:C	1:C:93:SER:N	2.76	0.42
1:A:39:VAL:HG12	1:A:223:GLY:HA2	2.01	0.42
1:B:400:GLU:HG2	1:B:401:ARG:HG3	2.01	0.42
1:C:3:LYS:HA	1:C:392:ILE:HG23	2.01	0.42
1:C:50:ILE:O	1:C:54:MET:HG3	2.20	0.42
1:A:34:LEU:HB3	1:A:221:LEU:HD12	2.01	0.42
1:B:24:ALA:HB3	1:B:228:VAL:HG13	2.01	0.42
1:A:111:LEU:O	1:A:112:PRO:C	2.62	0.42
1:C:313:LEU:C	1:C:313:LEU:HD23	2.45	0.42
1:A:315:LEU:HD23	1:A:354:CYS:HB3	2.00	0.42
1:B:120:ARG:HA	1:B:121:PRO:HD2	1.73	0.42
1:D:244:ILE:HD12	1:D:382:ILE:HD13	2.01	0.42
1:B:34:LEU:HD21	1:B:99:PRO:HA	2.02	0.42
1:D:376:LEU:HD23	1:D:376:LEU:HA	1.87	0.42
1:D:248:LYS:HA	1:D:282:LEU:O	2.19	0.42
1:D:296:THR:O	1:D:326:THR:OG1	2.32	0.42
1:D:370:LEU:HD23	1:D:371:ARG:H	1.85	0.42
1:D:111:LEU:HD21	1:D:143:VAL:CG1	2.49	0.42
1:A:103:ARG:HD3	1:A:104:PHE:CZ	2.54	0.42
1:C:155:HIS:ND1	5:C:700:HOH:O	2.37	0.42

Continued on next page...

Continued from previous page...

Atom-1	Atom-2	Interatomic distance (Å)	Clash overlap (Å)
1:C:418:GLY:HA2	4:C:501:ACT:OXT	2.20	0.42
1:A:101:VAL:HG11	1:A:145:ALA:CB	2.47	0.42
1:A:139:GLU:HB2	1:A:142:TYR:CE2	2.55	0.42
1:B:189:PRO:HD3	1:B:299:HIS:CD2	2.55	0.42
1:A:315:LEU:HD21	1:A:345:ALA:HB2	2.01	0.41
1:A:330:ASN:HD21	1:A:333:MET:CE	2.33	0.41
1:C:401:ARG:NH1	1:C:404:ASP:OD2	2.53	0.41
1:D:373:SER:OG	1:D:395:ILE:HD11	2.20	0.41
1:C:9:PRO:HB3	1:C:382:ILE:O	2.19	0.41
1:C:56:LEU:C	1:C:56:LEU:CD2	2.88	0.41
1:A:121:PRO:HB2	3:A:505:UDP:C2	2.55	0.41
1:A:285:HIS:C	1:A:287:LYS:H	2.29	0.41
1:B:3:LYS:HG2	1:B:390:ASP:OD2	2.20	0.41
1:B:266:LEU:HD13	1:B:282:LEU:HD12	2.01	0.41
1:C:170:MET:HA	1:C:215:ILE:HD13	2.02	0.41
1:B:248:LYS:HD2	1:B:283:ASP:OD2	2.21	0.41
1:B:303:PRO:HG2	1:B:306:MET:HB2	2.03	0.41
1:A:126:ILE:HD13	1:A:138:LEU:HD21	2.03	0.41
1:C:193:ASP:HB2	1:C:229:LEU:HD22	2.03	0.41
1:A:417:LYS:HB2	1:A:417:LYS:HE2	1.75	0.41
1:D:314:ASN:HB3	1:D:354:CYS:HB2	2.01	0.41
1:A:136:ILE:HB	1:B:138:LEU:HB2	2.02	0.41
1:B:77:VAL:HB	1:B:104:PHE:CE2	2.55	0.41
1:C:201:LEU:HB3	1:C:221:LEU:HB3	2.03	0.41
1:A:183:GLU:CD	1:A:212:ARG:HH21	2.29	0.41
1:C:91:ARG:C	1:C:93:SER:H	2.28	0.41
1:D:24:ALA:CB	1:D:229:LEU:CD2	2.99	0.41
1:D:232:ARG:HB2	1:D:259:LEU:CD2	2.50	0.41
1:D:322:VAL:HG22	1:D:353:ILE:HD12	2.02	0.41
1:C:151:LEU:HD23	1:C:151:LEU:HA	1.96	0.41
1:D:126:ILE:HG23	1:D:136:ILE:HG21	2.02	0.41
1:D:135:GLU:OE2	1:D:137:LYS:HE3	2.21	0.41
1:A:231:ASP:HB3	1:A:234:GLU:HB3	2.02	0.40
1:C:129:LEU:HA	1:C:129:LEU:HD23	1.85	0.40
1:D:320:THR:HA	1:D:354:CYS:O	2.21	0.40
1:B:81:SER:OG	1:B:142:TYR:HE2	2.04	0.40
1:B:285:HIS:C	1:B:287:LYS:N	2.79	0.40
1:D:233:ILE:HG21	1:D:371:ARG:CZ	2.52	0.40
1:B:28:ILE:HD12	1:B:228:VAL:HG22	2.02	0.40
1:C:12:LEU:CD1	1:C:241:ALA:HB1	2.51	0.40
1:D:29:LEU:HD23	1:D:29:LEU:HA	1.95	0.40

Continued on next page...

Continued from previous page...

Atom-1	Atom-2	Interatomic distance (Å)	Clash overlap (Å)
1:C:17:THR:HA	1:C:252:ARG:HB2	2.04	0.40
1:C:282:LEU:C	1:C:282:LEU:HD23	2.46	0.40
1:C:339:ILE:HD13	1:C:343:ALA:O	2.21	0.40
1:A:94:ILE:HD13	1:A:122:VAL:HG21	2.03	0.40
1:A:193:ASP:CG	1:A:229:LEU:HD22	2.46	0.40
1:C:138:LEU:HB3	1:D:130:GLU:HG3	2.02	0.40
1:C:256:PRO:HG2	1:C:276:GLY:O	2.22	0.40
1:D:20:GLY:HA3	1:D:43:ASN:O	2.22	0.40
1:D:360:LEU:O	1:D:384:GLU:N	2.46	0.40

There are no symmetry-related clashes.

5.3 Torsion angles [i](#)

5.3.1 Protein backbone [i](#)

In the following table, the Percentiles column shows the percent Ramachandran outliers of the chain as a percentile score with respect to all X-ray entries followed by that with respect to entries of similar resolution.

The Analysed column shows the number of residues for which the backbone conformation was analysed, and the total number of residues.

Mol	Chain	Analysed	Favoured	Allowed	Outliers	Percentiles	
1	A	415/419 (99%)	390 (94%)	24 (6%)	1 (0%)	43	63
1	B	415/419 (99%)	396 (95%)	19 (5%)	0	100	100
1	C	415/419 (99%)	390 (94%)	24 (6%)	1 (0%)	43	63
1	D	415/419 (99%)	389 (94%)	24 (6%)	2 (0%)	24	43
All	All	1660/1676 (99%)	1565 (94%)	91 (6%)	4 (0%)	43	63

All (4) Ramachandran outliers are listed below:

Mol	Chain	Res	Type
1	C	85	ASP
1	D	117	ILE
1	A	117	ILE
1	D	143	VAL

5.3.2 Protein sidechains [i](#)

In the following table, the Percentiles column shows the percent sidechain outliers of the chain as a percentile score with respect to all X-ray entries followed by that with respect to entries of similar resolution.

The Analysed column shows the number of residues for which the sidechain conformation was analysed, and the total number of residues.

Mol	Chain	Analysed	Rotameric	Outliers	Percentiles	
1	A	329/329 (100%)	321 (98%)	8 (2%)	43	70
1	B	329/329 (100%)	325 (99%)	4 (1%)	63	83
1	C	329/329 (100%)	321 (98%)	8 (2%)	43	70
1	D	329/329 (100%)	316 (96%)	13 (4%)	28	54
All	All	1316/1316 (100%)	1283 (98%)	33 (2%)	42	69

All (33) residues with a non-rotameric sidechain are listed below:

Mol	Chain	Res	Type
1	A	72	ILE
1	A	101	VAL
1	A	115	CYS
1	A	117	ILE
1	A	131	LYS
1	A	220	ARG
1	A	329	GLU
1	A	417	LYS
1	B	91	ARG
1	B	120	ARG
1	B	219	GLU
1	B	401	ARG
1	C	56	LEU
1	C	115	CYS
1	C	120	ARG
1	C	220	ARG
1	C	322	VAL
1	C	351	THR
1	C	400	GLU
1	C	401	ARG
1	D	6	VAL
1	D	7	GLN
1	D	87	VAL
1	D	89	THR

Continued on next page...

Continued from previous page...

Mol	Chain	Res	Type
1	D	120	ARG
1	D	131	LYS
1	D	135	GLU
1	D	138	LEU
1	D	348	GLU
1	D	352	VAL
1	D	353	ILE
1	D	391	ARG
1	D	397	ARG

Sometimes sidechains can be flipped to improve hydrogen bonding and reduce clashes. All (14) such sidechains are listed below:

Mol	Chain	Res	Type
1	A	13	GLN
1	A	23	ASN
1	A	59	GLN
1	A	79	ASN
1	A	108	GLN
1	B	43	ASN
1	B	108	GLN
1	B	184	ASN
1	B	307	GLN
1	C	364	GLN
1	D	23	ASN
1	D	76	ASN
1	D	108	GLN
1	D	330	ASN

5.3.3 RNA [i](#)

There are no RNA molecules in this entry.

5.4 Non-standard residues in protein, DNA, RNA chains [i](#)

4 non-standard protein/DNA/RNA residues are modelled in this entry.

In the following table, the Counts columns list the number of bonds (or angles) for which Mogul statistics could be retrieved, the number of bonds (or angles) that are observed in the model and the number of bonds (or angles) that are defined in the Chemical Component Dictionary. The Link column lists molecule types, if any, to which the group is linked. The Z score for a bond length (or angle) is the number of standard deviations the observed value is removed from the

expected value. A bond length (or angle) with $|Z| > 2$ is considered an outlier worth inspection. RMSZ is the root-mean-square of all Z scores of the bond lengths (or angles).

Mol	Type	Chain	Res	Link	Bond lengths			Bond angles		
					Counts	RMSZ	# Z > 2	Counts	RMSZ	# Z > 2
1	IAS	D	67	1	6,7,8	0.89	0	3,8,10	0.99	0
1	IAS	A	67	1	6,7,8	1.01	0	3,8,10	0.88	0
1	IAS	C	67	1	6,7,8	1.11	0	3,8,10	0.70	0
1	IAS	B	67	1	6,7,8	1.04	0	3,8,10	0.85	0

In the following table, the Chirals column lists the number of chiral outliers, the number of chiral centers analysed, the number of these observed in the model and the number defined in the Chemical Component Dictionary. Similar counts are reported in the Torsion and Rings columns. '2' means no outliers of that kind were identified.

Mol	Type	Chain	Res	Link	Chirals	Torsions	Rings
1	IAS	D	67	1	-	2/7/7/8	-
1	IAS	A	67	1	-	2/7/7/8	-
1	IAS	C	67	1	-	0/7/7/8	-
1	IAS	B	67	1	-	0/7/7/8	-

There are no bond length outliers.

There are no bond angle outliers.

There are no chirality outliers.

All (4) torsion outliers are listed below:

Mol	Chain	Res	Type	Atoms
1	A	67	IAS	OXT-C-CA-CB
1	D	67	IAS	OXT-C-CA-CB
1	A	67	IAS	O-C-CA-CB
1	D	67	IAS	O-C-CA-CB

There are no ring outliers.

1 monomer is involved in 1 short contact:

Mol	Chain	Res	Type	Clashes	Symm-Clashes
1	A	67	IAS	1	0

5.5 Carbohydrates

There are no oligosaccharides in this entry.

5.6 Ligand geometry

19 ligands are modelled in this entry.

In the following table, the Counts columns list the number of bonds (or angles) for which Mogul statistics could be retrieved, the number of bonds (or angles) that are observed in the model and the number of bonds (or angles) that are defined in the Chemical Component Dictionary. The Link column lists molecule types, if any, to which the group is linked. The Z score for a bond length (or angle) is the number of standard deviations the observed value is removed from the expected value. A bond length (or angle) with $|Z| > 2$ is considered an outlier worth inspection. RMSZ is the root-mean-square of all Z scores of the bond lengths (or angles).

Mol	Type	Chain	Res	Link	Bond lengths			Bond angles		
					Counts	RMSZ	# Z > 2	Counts	RMSZ	# Z > 2
2	EDO	A	503	-	3,3,3	0.62	0	2,2,2	0.24	0
2	EDO	C	505	-	3,3,3	0.44	0	2,2,2	0.29	0
2	EDO	C	502	-	3,3,3	0.54	0	2,2,2	0.33	0
2	EDO	A	501	-	3,3,3	0.56	0	2,2,2	0.26	0
2	EDO	D	505	-	3,3,3	0.55	0	2,2,2	0.39	0
4	ACT	C	501	-	3,3,3	1.12	0	3,3,3	0.80	0
2	EDO	D	502	-	3,3,3	0.37	0	2,2,2	0.40	0
2	EDO	C	504	-	3,3,3	0.53	0	2,2,2	0.28	0
2	EDO	C	503	-	3,3,3	0.47	0	2,2,2	0.37	0
3	UDP	A	505	-	25,26,26	1.45	4 (16%)	38,40,40	1.69	7 (18%)
2	EDO	B	503	-	3,3,3	0.54	0	2,2,2	0.31	0
2	EDO	B	504	-	3,3,3	0.68	0	2,2,2	0.19	0
2	EDO	D	503	-	3,3,3	0.60	0	2,2,2	0.28	0
4	ACT	D	501	-	3,3,3	1.10	0	3,3,3	0.88	0
2	EDO	B	502	-	3,3,3	0.52	0	2,2,2	0.32	0
2	EDO	A	502	-	3,3,3	0.43	0	2,2,2	0.40	0
2	EDO	A	504	-	3,3,3	0.53	0	2,2,2	0.37	0
2	EDO	D	504	-	3,3,3	0.56	0	2,2,2	0.26	0
2	EDO	B	501	-	3,3,3	0.45	0	2,2,2	0.39	0

In the following table, the Chirals column lists the number of chiral outliers, the number of chiral centers analysed, the number of these observed in the model and the number defined in the Chemical Component Dictionary. Similar counts are reported in the Torsion and Rings columns. '-' means no outliers of that kind were identified.

Mol	Type	Chain	Res	Link	Chirals	Torsions	Rings
2	EDO	A	503	-	-	0/1/1/1	-
2	EDO	D	503	-	-	0/1/1/1	-
2	EDO	C	504	-	-	1/1/1/1	-
2	EDO	C	503	-	-	1/1/1/1	-
2	EDO	A	504	-	-	1/1/1/1	-

Continued on next page...

Continued from previous page...

Mol	Type	Chain	Res	Link	Chirals	Torsions	Rings
2	EDO	B	502	-	-	0/1/1/1	-
2	EDO	C	505	-	-	1/1/1/1	-
2	EDO	C	502	-	-	1/1/1/1	-
2	EDO	D	504	-	-	0/1/1/1	-
2	EDO	A	501	-	-	0/1/1/1	-
2	EDO	A	502	-	-	1/1/1/1	-
2	EDO	B	503	-	-	0/1/1/1	-
2	EDO	B	504	-	-	1/1/1/1	-
3	UDP	A	505	-	-	1/16/32/32	0/2/2/2
2	EDO	D	505	-	-	1/1/1/1	-
2	EDO	D	502	-	-	1/1/1/1	-
2	EDO	B	501	-	-	1/1/1/1	-

All (4) bond length outliers are listed below:

Mol	Chain	Res	Type	Atoms	Z	Observed(Å)	Ideal(Å)
3	A	505	UDP	C2-N1	2.88	1.43	1.38
3	A	505	UDP	C6-C5	2.86	1.41	1.35
3	A	505	UDP	PA-O3A	2.36	1.62	1.59
3	A	505	UDP	C4-N3	-2.26	1.34	1.38

All (7) bond angle outliers are listed below:

Mol	Chain	Res	Type	Atoms	Z	Observed(°)	Ideal(°)
3	A	505	UDP	N3-C2-N1	5.13	121.57	114.89
3	A	505	UDP	O3'-C3'-C4'	3.46	121.02	111.08
3	A	505	UDP	O2-C2-N1	-3.45	118.31	122.80
3	A	505	UDP	C4-N3-C2	-3.34	122.46	126.61
3	A	505	UDP	C6-N1-C2	-3.25	117.04	121.00
3	A	505	UDP	C5-C4-N3	2.66	118.52	114.80
3	A	505	UDP	O4-C4-C5	-2.26	121.27	125.16

There are no chirality outliers.

All (11) torsion outliers are listed below:

Mol	Chain	Res	Type	Atoms
2	C	502	EDO	O1-C1-C2-O2
2	C	504	EDO	O1-C1-C2-O2
2	D	505	EDO	O1-C1-C2-O2
2	A	504	EDO	O1-C1-C2-O2
2	B	501	EDO	O1-C1-C2-O2

Continued on next page...

Continued from previous page...

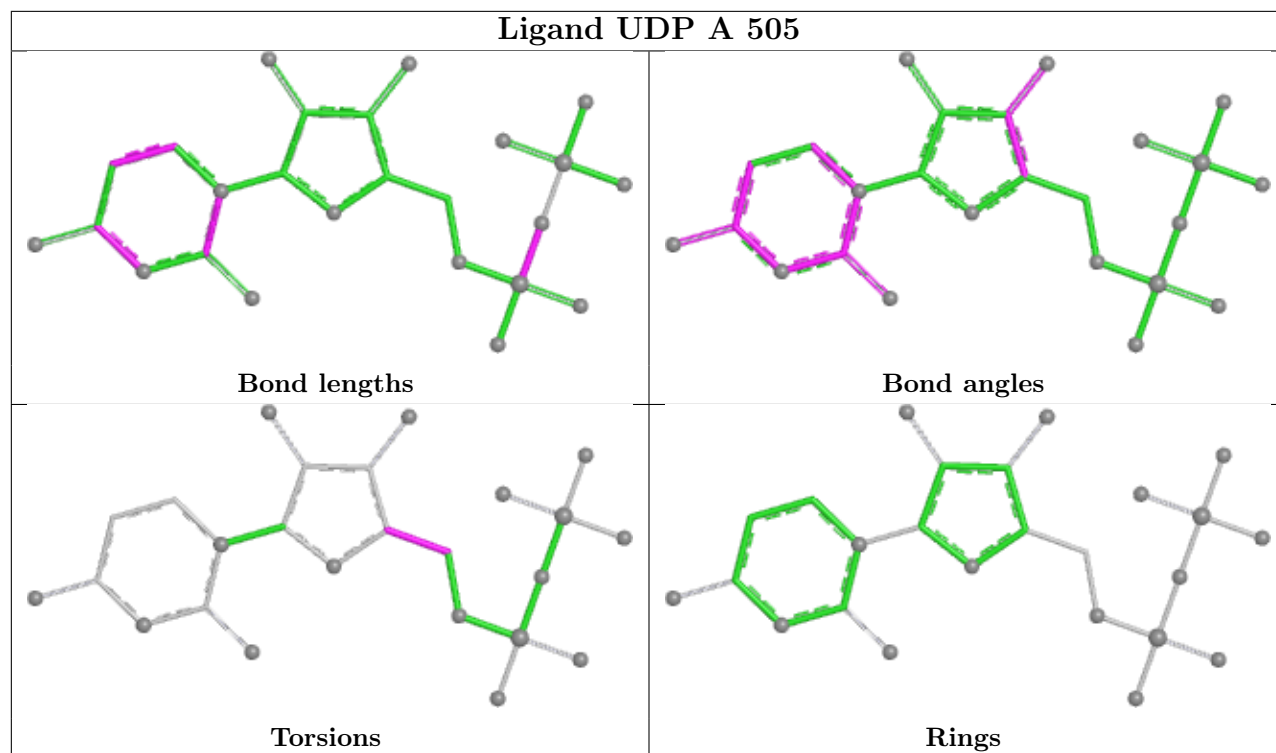
Mol	Chain	Res	Type	Atoms
2	D	502	EDO	O1-C1-C2-O2
2	B	504	EDO	O1-C1-C2-O2
2	C	503	EDO	O1-C1-C2-O2
3	A	505	UDP	O4'-C4'-C5'-O5'
2	A	502	EDO	O1-C1-C2-O2
2	C	505	EDO	O1-C1-C2-O2

There are no ring outliers.

6 monomers are involved in 14 short contacts:

Mol	Chain	Res	Type	Clashes	Symm-Clashes
2	A	503	EDO	1	0
2	C	505	EDO	3	0
2	A	501	EDO	2	0
4	C	501	ACT	1	0
3	A	505	UDP	3	0
2	B	504	EDO	4	0

The following is a two-dimensional graphical depiction of Mogul quality analysis of bond lengths, bond angles, torsion angles, and ring geometry for all instances of the Ligand of Interest. In addition, ligands with molecular weight > 250 and outliers as shown on the validation Tables will also be included. For torsion angles, if less than 5% of the Mogul distribution of torsion angles is within 10 degrees of the torsion angle in question, then that torsion angle is considered an outlier. Any bond that is central to one or more torsion angles identified as an outlier by Mogul will be highlighted in the graph. For rings, the root-mean-square deviation (RMSD) between the ring in question and similar rings identified by Mogul is calculated over all ring torsion angles. If the average RMSD is greater than 60 degrees and the minimal RMSD between the ring in question and any Mogul-identified rings is also greater than 60 degrees, then that ring is considered an outlier. The outliers are highlighted in purple. The color gray indicates Mogul did not find sufficient equivalents in the CSD to analyse the geometry.



5.7 Other polymers [i](#)

There are no such residues in this entry.

5.8 Polymer linkage issues [i](#)

There are no chain breaks in this entry.

6 Fit of model and data

6.1 Protein, DNA and RNA chains

In the following table, the column labelled ‘#RSRZ > 2’ contains the number (and percentage) of RSRZ outliers, followed by percent RSRZ outliers for the chain as percentile scores relative to all X-ray entries and entries of similar resolution. The OWAB column contains the minimum, median, 95th percentile and maximum values of the occupancy-weighted average B-factor per residue. The column labelled ‘Q < 0.9’ lists the number of (and percentage) of residues with an average occupancy less than 0.9.

Mol	Chain	Analysed	<RSRZ>	#RSRZ>2	OWAB(Å ²)	Q<0.9
1	A	418/419 (99%)	-0.38	8 (1%) 66 62	12, 26, 44, 84	0
1	B	418/419 (99%)	-0.42	0 100 100	12, 25, 45, 67	0
1	C	418/419 (99%)	-0.37	3 (0%) 84 81	11, 26, 48, 71	0
1	D	418/419 (99%)	-0.29	8 (1%) 66 62	14, 27, 49, 78	0
All	All	1672/1676 (99%)	-0.37	19 (1%) 78 75	11, 26, 47, 84	0

All (19) RSRZ outliers are listed below:

Mol	Chain	Res	Type	RSRZ
1	A	419	GLU	5.0
1	C	419	GLU	3.4
1	A	117	ILE	3.1
1	A	418	GLY	2.7
1	A	118	GLY	2.6
1	A	115	CYS	2.5
1	A	112	PRO	2.4
1	D	117	ILE	2.4
1	D	121	PRO	2.4
1	D	111	LEU	2.4
1	D	418	GLY	2.3
1	D	112	PRO	2.3
1	D	118	GLY	2.2
1	C	5	ARG	2.2
1	A	116	ALA	2.1
1	D	89	THR	2.1
1	C	119	ALA	2.0
1	A	121	PRO	2.0
1	D	114	GLY	2.0

6.2 Non-standard residues in protein, DNA, RNA chains [i](#)

In the following table, the Atoms column lists the number of modelled atoms in the group and the number defined in the chemical component dictionary. The B-factors column lists the minimum, median, 95th percentile and maximum values of B factors of atoms in the group. The column labelled 'Q< 0.9' lists the number of atoms with occupancy less than 0.9.

Mol	Type	Chain	Res	Atoms	RSCC	RSR	B-factors(Å ²)	Q<0.9
1	IAS	A	67	8/9	0.87	0.09	32,33,35,35	0
1	IAS	C	67	8/9	0.90	0.10	19,22,28,30	0
1	IAS	D	67	8/9	0.90	0.07	32,34,35,36	0
1	IAS	B	67	8/9	0.91	0.08	32,32,33,34	0

6.3 Carbohydrates [i](#)

There are no oligosaccharides in this entry.

6.4 Ligands [i](#)

In the following table, the Atoms column lists the number of modelled atoms in the group and the number defined in the chemical component dictionary. The B-factors column lists the minimum, median, 95th percentile and maximum values of B factors of atoms in the group. The column labelled 'Q< 0.9' lists the number of atoms with occupancy less than 0.9.

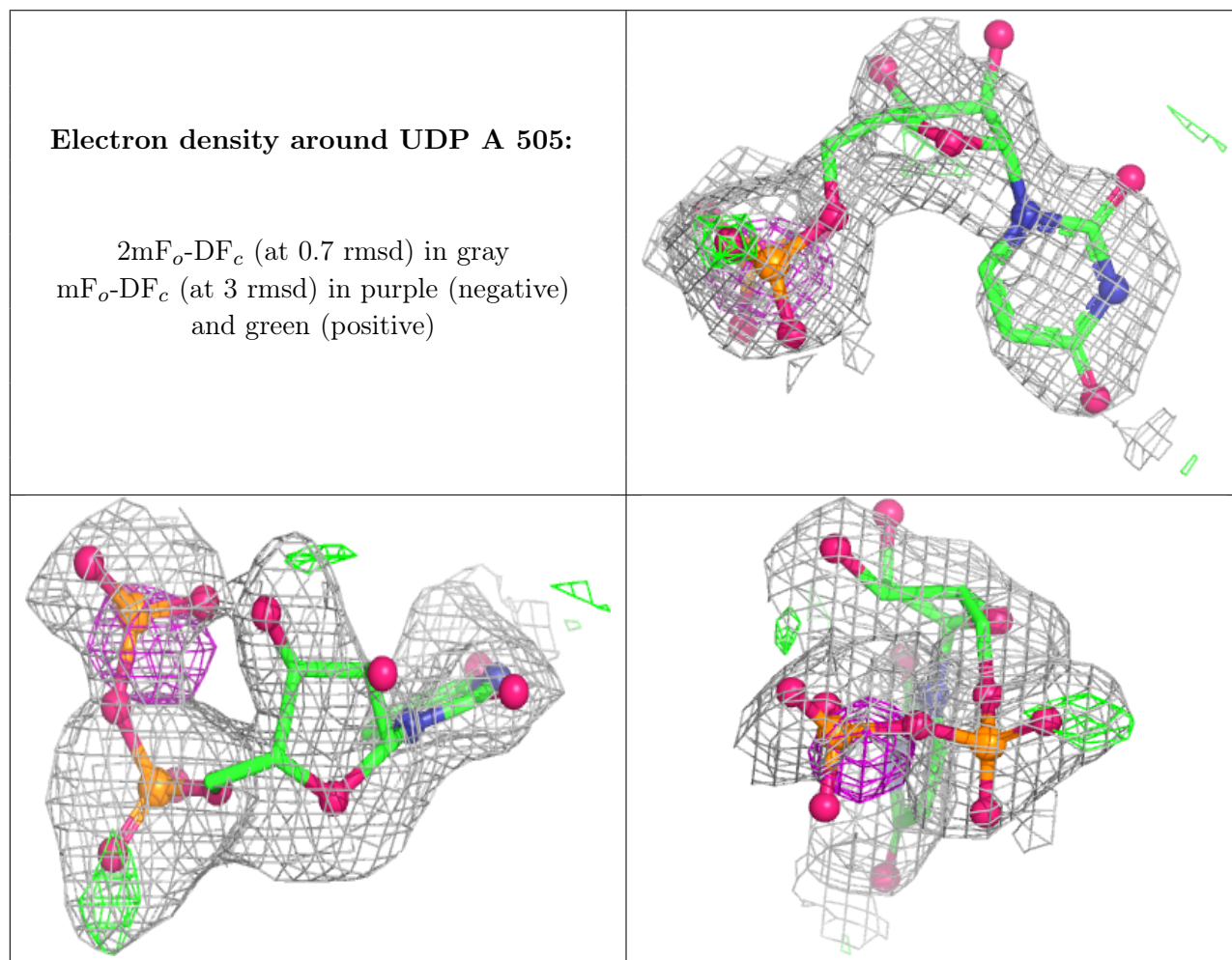
Mol	Type	Chain	Res	Atoms	RSCC	RSR	B-factors(Å ²)	Q<0.9
4	ACT	C	501	4/4	0.68	0.16	56,57,58,58	0
3	UDP	A	505	25/25	0.76	0.15	76,79,87,87	0
2	EDO	D	503	4/4	0.78	0.17	44,46,47,47	0
2	EDO	A	504	4/4	0.79	0.15	37,37,38,40	0
2	EDO	D	505	4/4	0.81	0.14	33,33,33,34	0
2	EDO	A	502	4/4	0.82	0.15	49,52,53,54	0
2	EDO	D	504	4/4	0.83	0.11	49,51,51,51	0
2	EDO	B	504	4/4	0.85	0.13	49,50,51,51	0
4	ACT	D	501	4/4	0.85	0.14	53,53,54,54	0
2	EDO	B	502	4/4	0.87	0.10	40,40,41,41	0
2	EDO	A	503	4/4	0.87	0.13	31,33,34,34	0
2	EDO	B	501	4/4	0.88	0.12	41,43,43,43	0
2	EDO	C	502	4/4	0.88	0.10	33,34,35,35	0
2	EDO	D	502	4/4	0.88	0.12	51,52,52,52	0
2	EDO	C	503	4/4	0.89	0.11	49,50,50,50	0
2	EDO	C	504	4/4	0.90	0.10	44,45,45,46	0
2	EDO	A	501	4/4	0.91	0.12	47,48,49,49	0
2	EDO	C	505	4/4	0.94	0.17	39,41,42,42	0

Continued on next page...

Continued from previous page...

Mol	Type	Chain	Res	Atoms	RSCC	RSR	B-factors(\AA^2)	Q<0.9
2	EDO	B	503	4/4	0.94	0.07	32,34,34,35	0

The following is a graphical depiction of the model fit to experimental electron density of all instances of the Ligand of Interest. In addition, ligands with molecular weight > 250 and outliers as shown on the geometry validation Tables will also be included. Each fit is shown from different orientation to approximate a three-dimensional view.



6.5 Other polymers [i](#)

There are no such residues in this entry.