



wwPDB X-ray Structure Validation Summary Report

Mar 9, 2026 – 03:32 AM UTC

PDB ID : 2E76 / pdb_00002e76
Title : Crystal Structure of the Cytochrome b6f Complex with tridecyl-stigmatellin (TDS) from *M.laminosus*
Authors : Cramer, W.A.; Yamashita, E.; Zhang, H.
Deposited on : 2007-01-05
Resolution : 3.41 Å (reported)

This is a wwPDB X-ray Structure Validation Summary Report for a publicly released PDB entry.

We welcome your comments at validation@mail.wwpdb.org

A user guide is available at

<https://www.wwpdb.org/validation/2017/XrayValidationReportHelp>

with specific help available everywhere you see the  symbol.

The types of validation reports are described at

<http://www.wwpdb.org/validation/2017/FAQs#types>.

The following versions of software and data (see [references](#) ) were used in the production of this report:

MolProbity : 4-5-2 with Phenix2.0
Mogul : 2022.3.0, CSD as543be (2022)
Xtriage (Phenix) : 2.0
EDS : 3.0
Buster-report : wwPDB partial adaption of 1.1.7 (2018)
Percentile statistics : 20250101.v01 (using entries in the PDB archive January 1st 2025)
CCP4 : 9.0.010 (Gargrove)
Density-Fitness : 1.0.12
Ideal geometry (proteins) : Engh & Huber (2001)
Ideal geometry (DNA, RNA) : Parkinson et al. (1996)
Validation Pipeline (wwPDB-VP) : 2.49

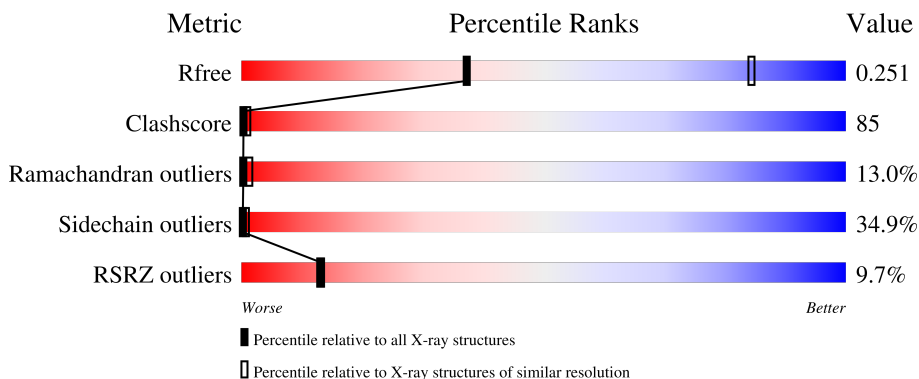
1 Overall quality at a glance

The following experimental techniques were used to determine the structure:

X-RAY DIFFRACTION

The reported resolution of this entry is 3.41 Å.

Percentile scores (ranging between 0-100) for global validation metrics of the entry are shown in the following graphic. The table shows the number of entries on which the scores are based.




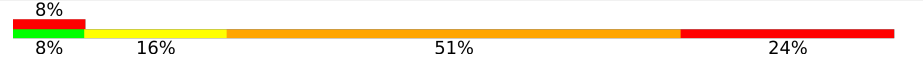

Metric	Whole archive (#Entries)	Similar resolution (#Entries, resolution range(Å))
R_{free}	180053	1210 (3.48-3.36)
Clashscore	190562	1234 (3.48-3.36)
Ramachandran outliers	187476	1222 (3.48-3.36)
Sidechain outliers	187428	1222 (3.48-3.36)
RSRZ outliers	180081	1210 (3.48-3.36)

The table below summarises the geometric issues observed across the polymeric chains and their fit to the electron density. The red, orange, yellow and green segments of the lower bar indicate the fraction of residues that contain outliers for ≥ 3 , 2, 1 and 0 types of geometric quality criteria respectively. A grey segment represents the fraction of residues that are not modelled. The numeric value for each fraction is indicated below the corresponding segment, with a dot representing fractions $\leq 5\%$. The upper red bar (where present) indicates the fraction of residues that have poor fit to the electron density. The numeric value is given above the bar.

Mol	Chain	Length	Quality of chain
1	A	215	
2	B	160	
3	C	289	
4	D	179	
5	E	32	

Continued on next page...

Continued from previous page...

Mol	Chain	Length	Quality of chain
6	F	35	
7	G	37	
8	H	29	

The following table lists non-polymeric compounds, carbohydrate monomers and non-standard residues in protein, DNA, RNA chains that are outliers for geometric or electron-density-fit criteria:

Mol	Type	Chain	Res	Chirality	Geometry	Clashes	Electron density
10	HEM	A	302	-	-	X	-
11	HEC	A	303	-	-	X	-
11	HEC	C	301	-	-	X	-
12	OPC	B	1001	-	X	-	-
13	UMQ	A	1101	X	-	-	-
13	UMQ	A	1102	X	-	-	-
13	UMQ	A	1103	X	-	-	-
13	UMQ	A	1104	X	-	-	-
14	CLA	B	201	X	-	-	-
15	TDS	B	1201	-	X	-	-
15	TDS	B	1202	-	X	-	-
17	SQD	D	201	X	X	-	-

2 Entry composition [i](#)

There are 19 unique types of molecules in this entry. The entry contains 8112 atoms, of which 0 are hydrogens and 0 are deuteriums.

In the tables below, the ZeroOcc column contains the number of atoms modelled with zero occupancy, the AltConf column contains the number of residues with at least one atom in alternate conformation and the Trace column contains the number of residues modelled with at most 2 atoms.

- Molecule 1 is a protein called Cytochrome b6.

Mol	Chain	Residues	Atoms					ZeroOcc	AltConf	Trace
			Total	C	N	O	S			
1	A	215	1711	1140	272	288	11	0	0	0

- Molecule 2 is a protein called Cytochrome b6-f complex subunit 4.

Mol	Chain	Residues	Atoms					ZeroOcc	AltConf	Trace
			Total	C	N	O	S			
2	B	160	1249	841	193	209	6	0	0	0

- Molecule 3 is a protein called Apocytochrome f.

Mol	Chain	Residues	Atoms					ZeroOcc	AltConf	Trace
			Total	C	N	O	S			
3	C	288	2216	1415	369	424	8	0	0	0

- Molecule 4 is a protein called Cytochrome b6-f complex iron-sulfur subunit.

Mol	Chain	Residues	Atoms					ZeroOcc	AltConf	Trace
			Total	C	N	O	S			
4	D	168	1288	823	221	237	7	0	0	0

- Molecule 5 is a protein called Cytochrome b6-f complex subunit 6.

Mol	Chain	Residues	Atoms					ZeroOcc	AltConf	Trace
			Total	C	N	O	S			
5	E	32	248	179	34	34	1	0	0	0

- Molecule 6 is a protein called Cytochrome b6-f complex subunit 7.

Mol	Chain	Residues	Atoms					ZeroOcc	AltConf	Trace
			Total	C	N	O	S			
6	F	32	242	165	35	40	2	0	0	0

- Molecule 7 is a protein called Cytochrome b6-f complex subunit 5.

Mol	Chain	Residues	Atoms					ZeroOcc	AltConf	Trace
			Total	C	N	O	S			
7	G	37	Total 283	C 188	N 44	O 50	S 1	0	0	0

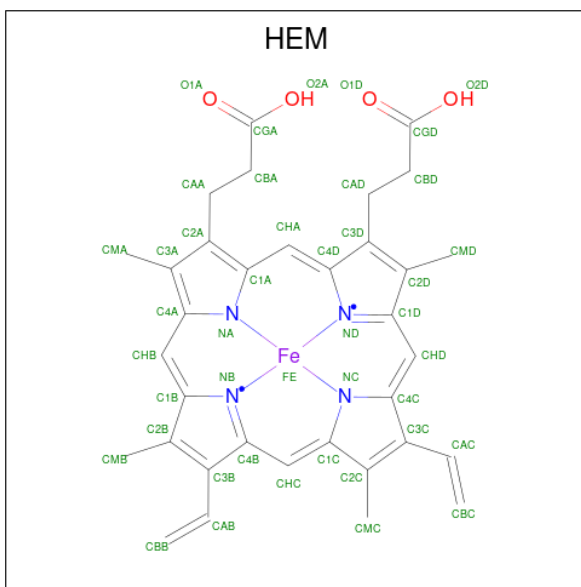
- Molecule 8 is a protein called Cytochrome b6-f complex subunit 8.

Mol	Chain	Residues	Atoms					ZeroOcc	AltConf	Trace
			Total	C	N	O	S			
8	H	29	Total 230	C 156	N 36	O 36	S 2	0	0	0

- Molecule 9 is CADMIUM ION (CCD ID: CD) (formula: Cd).

Mol	Chain	Residues	Atoms		ZeroOcc	AltConf
			Total	Cd		
9	A	1	Total 1	Cd 1	0	0

- Molecule 10 is PROTOPORPHYRIN IX CONTAINING FE (CCD ID: HEM) (formula: C₃₄H₃₂FeN₄O₄).



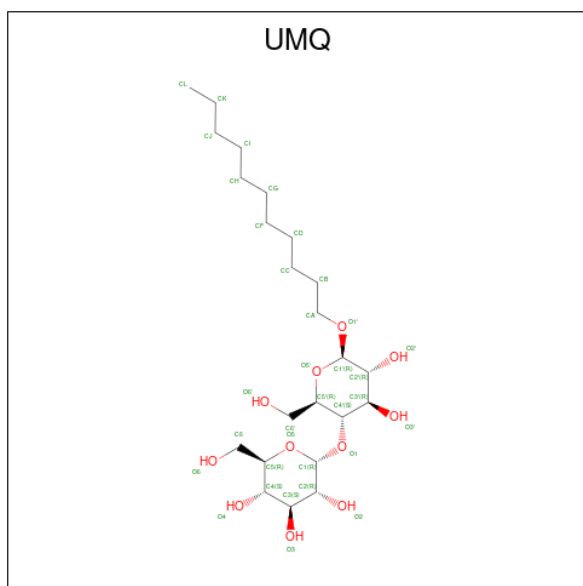
Mol	Chain	Residues	Atoms					ZeroOcc	AltConf
			Total	C	Fe	N	O		
10	A	1	Total 43	C 34	Fe 1	N 4	O 4	0	0
10	A	1	Total 43	C 34	Fe 1	N 4	O 4	0	0

- Molecule 11 is HEME C (CCD ID: HEC) (formula: C₃₄H₃₄FeN₄O₄).

Continued from previous page...

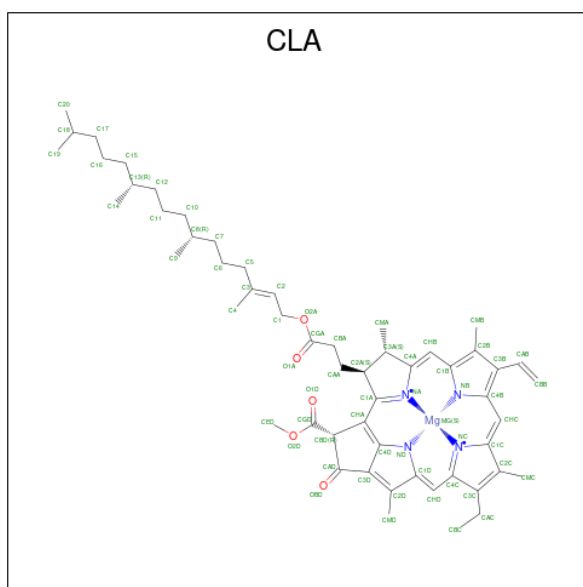
Mol	Chain	Residues	Atoms					ZeroOcc	AltConf
			Total	C	N	O	P		
12	B	1	54	44	1	8	1	0	0

- Molecule 13 is UNDECYL-MALTOSE (CCD ID: UMQ) (formula: $C_{23}H_{44}O_{11}$).



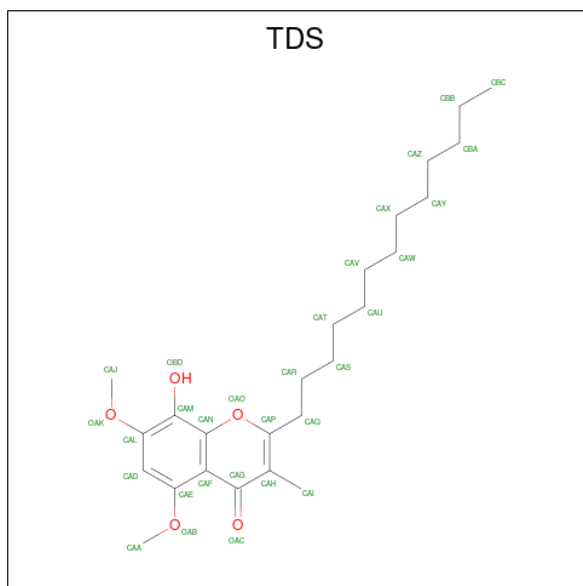
Mol	Chain	Residues	Atoms			ZeroOcc	AltConf
			Total	C	O		
13	A	1	34	23	11	0	0
13	A	1	34	23	11	0	0
13	A	1	34	23	11	0	0
13	A	1	34	23	11	0	0

- Molecule 14 is CHLOROPHYLL A (CCD ID: CLA) (formula: $C_{55}H_{72}MgN_4O_5$).



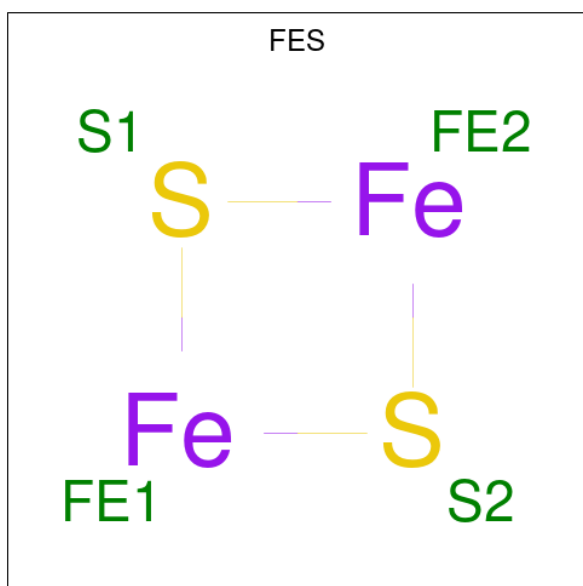
Mol	Chain	Residues	Atoms				ZeroOcc	AltConf	
14	B	1	Total	C	Mg	N	O	0	0
			65	55	1	4	5		

- Molecule 15 is 8-HYDROXY-5,7-DIMETHOXY-3-METHYL-2-TRIDECYL-4H-CHROME N-4-ONE (CCD ID: TDS) (formula: $C_{25}H_{38}O_5$).



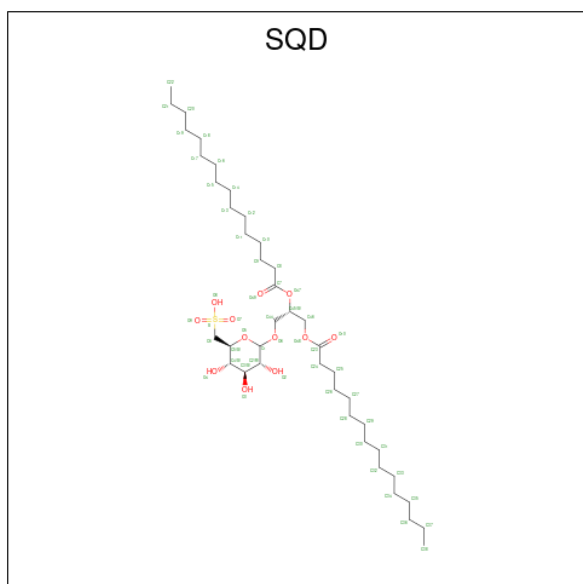
Mol	Chain	Residues	Atoms			ZeroOcc	AltConf
15	B	1	Total	C	O	0	0
			30	25	5		
15	B	1	Total	C	O	0	0
			30	25	5		

- Molecule 16 is FE2/S2 (INORGANIC) CLUSTER (CCD ID: FES) (formula: Fe₂S₂).



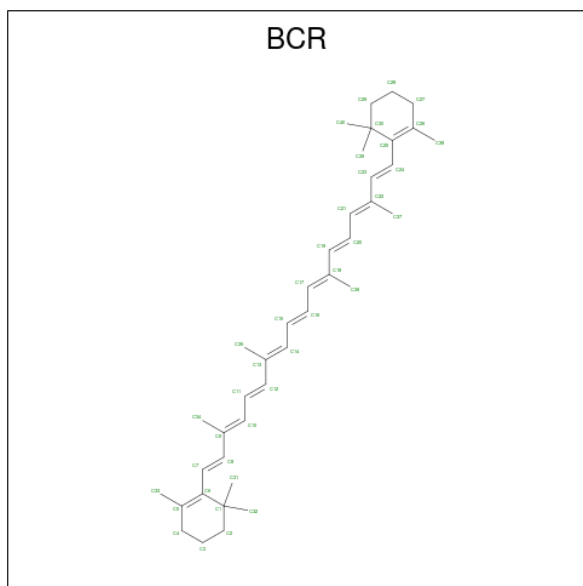
Mol	Chain	Residues	Atoms			ZeroOcc	AltConf
16	D	1	Total	Fe	S	0	0
			4	2	2		

- Molecule 17 is 1,2-DI-O-ACYL-3-O-[6-DEOXY-6-SULFO-ALPHA-D-GLUCOPYRANOSYL]-SN-GLYCEROL (CCD ID: SQD) (formula: C₄₁H₇₈O₁₂S).



Mol	Chain	Residues	Atoms				ZeroOcc	AltConf
17	D	1	Total	C	O	S	0	0
			54	41	12	1		

- Molecule 18 is BETA-CAROTENE (CCD ID: BCR) (formula: $C_{40}H_{56}$).



Mol	Chain	Residues	Atoms	ZeroOcc	AltConf
18	G	1	Total C 40 40	0	0

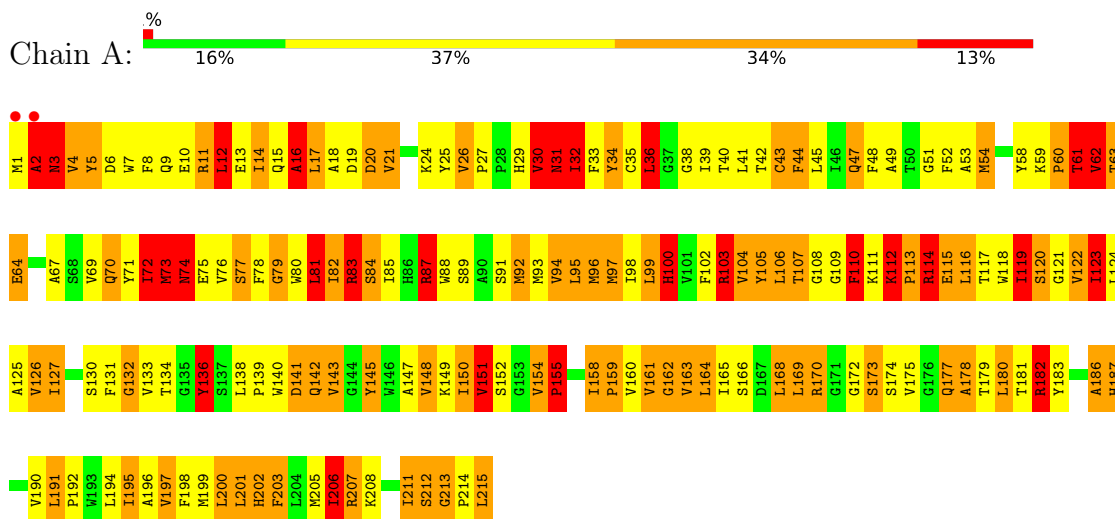
- Molecule 19 is water.

Mol	Chain	Residues	Atoms	ZeroOcc	AltConf
19	A	2	Total O 2 2	0	0
19	B	2	Total O 2 2	0	0
19	C	1	Total O 1 1	0	0

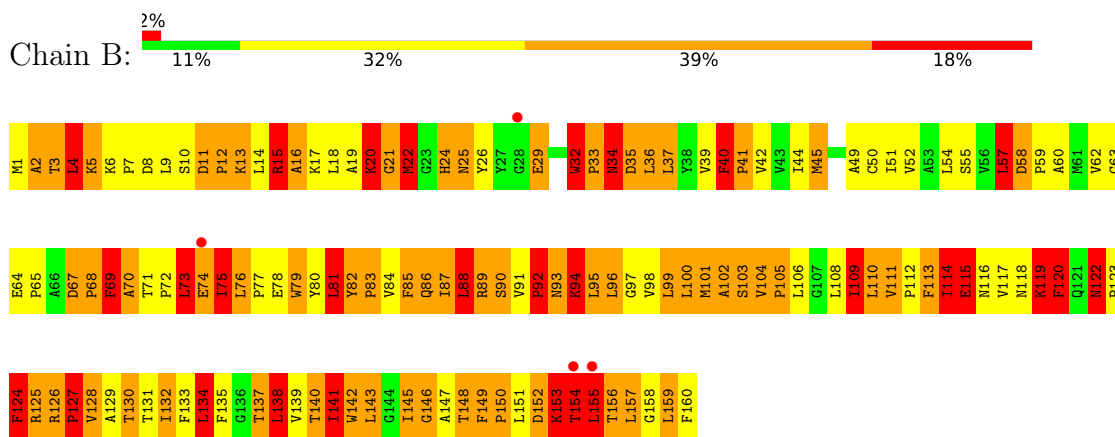
3 Residue-property plots

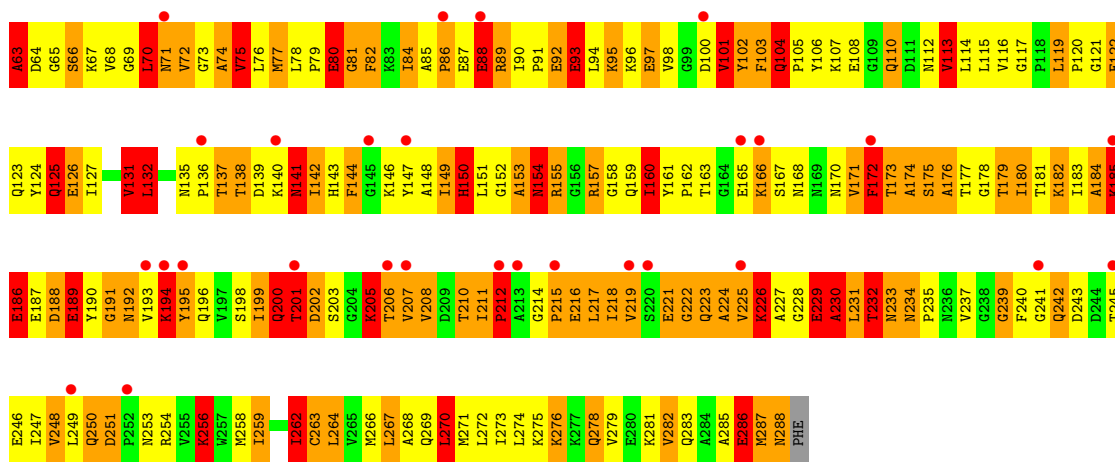
These plots are drawn for all protein, RNA, DNA and oligosaccharide chains in the entry. The first graphic for a chain summarises the proportions of the various outlier classes displayed in the second graphic. The second graphic shows the sequence view annotated by issues in geometry and electron density. Residues are color-coded according to the number of geometric quality criteria for which they contain at least one outlier: green = 0, yellow = 1, orange = 2 and red = 3 or more. A red dot above a residue indicates a poor fit to the electron density ($RSRZ > 2$). Stretches of 2 or more consecutive residues without any outlier are shown as a green connector. Residues present in the sample, but not in the model, are shown in grey.

- Molecule 1: Cytochrome b6

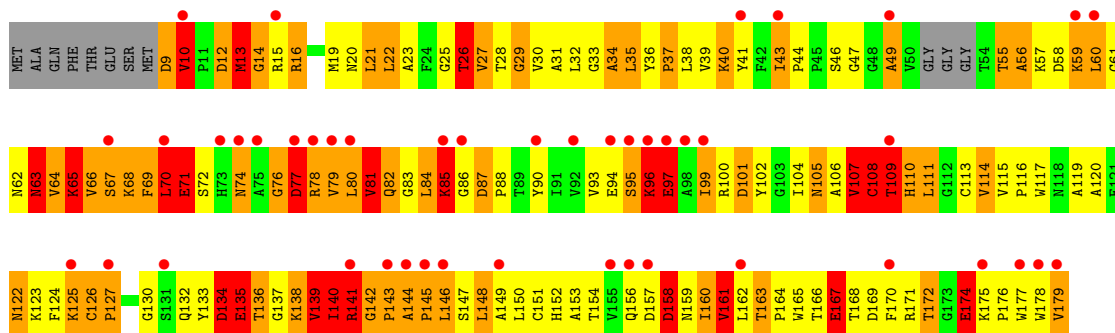


- Molecule 2: Cytochrome b6-f complex subunit 4





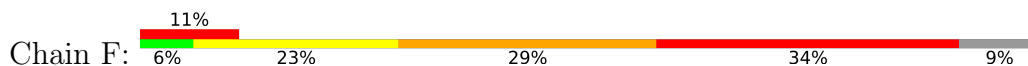
• Molecule 4: Cytochrome b6-f complex iron-sulfur subunit



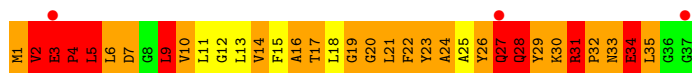
• Molecule 5: Cytochrome b6-f complex subunit 6



• Molecule 6: Cytochrome b6-f complex subunit 7

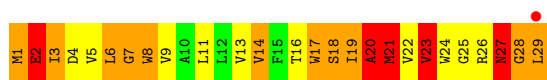


• Molecule 7: Cytochrome b6-f complex subunit 5



- Molecule 8: Cytochrome b6-f complex subunit 8

Chain H: 



4 Data and refinement statistics

Property	Value	Source
Space group	P 61 2 2	Depositor
Cell constants a, b, c, α , β , γ	157.23Å 157.23Å 363.30Å 90.00° 90.00° 120.00°	Depositor
Resolution (Å)	41.27 – 3.41 41.27 – 3.41	Depositor EDS
% Data completeness (in resolution range)	99.7 (41.27-3.41) 99.7 (41.27-3.41)	Depositor EDS
R_{merge}	0.12	Depositor
R_{sym}	(Not available)	Depositor
$\langle I/\sigma(I) \rangle$ ¹	4.84 (at 3.40Å)	Xtrriage
Refinement program	REFMAC 5.2.0019	Depositor
R, R_{free}	0.185 , 0.256 0.182 , 0.251	Depositor DCC
R_{free} test set	1852 reflections (4.99%)	wwPDB-VP
Wilson B-factor (Å ²)	92.6	Xtrriage
Anisotropy	0.186	Xtrriage
Bulk solvent k_{sol} (e/Å ³), B_{sol} (Å ²)	0.29 , 95.2	EDS
L-test for twinning ²	$\langle L \rangle = 0.49$, $\langle L^2 \rangle = 0.33$	Xtrriage
Estimated twinning fraction	No twinning to report.	Xtrriage
F_o, F_c correlation	0.91	EDS
Total number of atoms	8112	wwPDB-VP
Average B, all atoms (Å ²)	62.0	wwPDB-VP

Xtrriage's analysis on translational NCS is as follows: *The largest off-origin peak in the Patterson function is 2.12% of the height of the origin peak. No significant pseudotranslation is detected.*

¹Intensities estimated from amplitudes.

²Theoretical values of $\langle |L| \rangle$, $\langle L^2 \rangle$ for acentric reflections are 0.5, 0.333 respectively for untwinned datasets, and 0.375, 0.2 for perfectly twinned datasets.

5 Model quality i

5.1 Standard geometry i

Bond lengths and bond angles in the following residue types are not validated in this section: OPC, SQD, CLA, TDS, HEM, UMQ, CD, HEC, FES, BCR

The Z score for a bond length (or angle) is the number of standard deviations the observed value is removed from the expected value. A bond length (or angle) with $|Z| > 5$ is considered an outlier worth inspection. RMSZ is the root-mean-square of all Z scores of the bond lengths (or angles).

Mol	Chain	Bond lengths		Bond angles	
		RMSZ	# Z >5	RMSZ	# Z >5
1	A	2.17	63/1763 (3.6%)	2.44	123/2405 (5.1%)
2	B	2.20	39/1288 (3.0%)	2.58	110/1765 (6.2%)
3	C	1.81	45/2264 (2.0%)	2.10	111/3082 (3.6%)
4	D	1.72	18/1320 (1.4%)	2.06	58/1798 (3.2%)
5	E	2.21	10/253 (4.0%)	2.58	19/340 (5.6%)
6	F	2.39	15/246 (6.1%)	2.33	13/331 (3.9%)
7	G	2.38	16/289 (5.5%)	2.32	17/391 (4.3%)
8	H	2.23	12/236 (5.1%)	2.13	8/323 (2.5%)
All	All	2.02	218/7659 (2.8%)	2.30	459/10435 (4.4%)

Chiral center outliers are detected by calculating the chiral volume of a chiral center and verifying if the center is modelled as a planar moiety or with the opposite hand. A planarity outlier is detected by checking planarity of atoms in a peptide group, atoms in a mainchain group or atoms of a sidechain that are expected to be planar.

Mol	Chain	#Chirality outliers	#Planarity outliers
1	A	0	4
2	B	0	3
3	C	0	7
4	D	0	5
5	E	0	1
6	F	0	3
7	G	0	2
8	H	0	2
All	All	0	27

The worst 5 of 218 bond length outliers are listed below:

Mol	Chain	Res	Type	Atoms	Z	Observed(Å)	Ideal(Å)
1	A	63	THR	CA-CB	-13.55	1.31	1.53
1	A	67	ALA	CA-CB	-13.26	1.31	1.53

Continued on next page...

Continued from previous page...

Mol	Chain	Res	Type	Atoms	Z	Observed(Å)	Ideal(Å)
4	D	44	PRO	CA-C	-11.17	1.45	1.51
2	B	141	ILE	CA-CB	-10.98	1.39	1.54
1	A	186	ALA	CA-CB	-10.94	1.36	1.53

The worst 5 of 459 bond angle outliers are listed below:

Mol	Chain	Res	Type	Atoms	Z	Observed(°)	Ideal(°)
5	E	23	ILE	CB-CA-C	-17.53	89.90	111.81
2	B	70	ALA	CA-C-N	-15.15	100.36	120.67
2	B	70	ALA	C-N-CA	-15.15	100.36	120.67
1	A	26	VAL	N-CA-C	14.30	122.90	107.60
5	E	23	ILE	N-CA-CB	14.04	125.93	110.62

There are no chirality outliers.

5 of 27 planarity outliers are listed below:

Mol	Chain	Res	Type	Group
1	A	112	LYS	Peptide
1	A	161	VAL	Peptide
1	A	2	ALA	Peptide
1	A	73	MET	Peptide
2	B	2	ALA	Peptide

5.2 Too-close contacts [i](#)

In the following table, the Non-H and H(model) columns list the number of non-hydrogen atoms and hydrogen atoms in the chain respectively. The H(added) column lists the number of hydrogen atoms added and optimized by MolProbity. The Clashes column lists the number of clashes within the asymmetric unit, whereas Symm-Clashes lists symmetry-related clashes.

Mol	Chain	Non-H	H(model)	H(added)	Clashes	Symm-Clashes
1	A	1711	0	1736	315	0
2	B	1249	0	1308	265	0
3	C	2216	0	2233	417	1
4	D	1288	0	1273	236	0
5	E	248	0	284	41	0
6	F	242	0	260	63	0
7	G	283	0	289	76	1
8	H	230	0	239	52	0
9	A	1	0	0	0	0
10	A	86	0	60	41	0

Continued on next page...

Continued from previous page...

Mol	Chain	Non-H	H(model)	H(added)	Clashes	Symm-Clashes
11	A	43	0	31	23	0
11	C	43	0	32	29	0
12	A	54	0	79	17	0
12	B	54	0	83	2	0
13	A	136	0	165	6	0
14	B	65	0	72	6	0
15	B	60	0	70	38	0
16	D	4	0	0	1	0
17	D	54	0	53	9	0
18	G	40	0	52	9	0
19	A	2	0	0	0	0
19	B	2	0	0	0	0
19	C	1	0	0	0	0
All	All	8112	0	8319	1392	1

The all-atom clashscore is defined as the number of clashes found per 1000 atoms (including hydrogen atoms). The all-atom clashscore for this structure is 85.

The worst 5 of 1392 close contacts within the same asymmetric unit are listed below, sorted by their clash magnitude.

Atom-1	Atom-2	Interatomic distance (Å)	Clash overlap (Å)
6:F:25:LEU:CD1	6:F:25:LEU:CG	1.77	1.62
3:C:256:LYS:CG	3:C:256:LYS:CD	1.80	1.59
2:B:138:LEU:CG	2:B:138:LEU:CD1	1.74	1.59
7:G:3:GLU:CD	7:G:3:GLU:CG	1.76	1.58
3:C:256:LYS:CE	3:C:256:LYS:NZ	1.74	1.50

All (1) symmetry-related close contacts are listed below. The label for Atom-2 includes the symmetry operator and encoded unit-cell translations to be applied.

Atom-1	Atom-2	Interatomic distance (Å)	Clash overlap (Å)
3:C:108:GLU:OE2	7:G:33:ASN:CB[8_565]	2.09	0.11

5.3 Torsion angles [i](#)

5.3.1 Protein backbone [i](#)

In the following table, the Percentiles column shows the percent Ramachandran outliers of the chain as a percentile score with respect to all X-ray entries followed by that with respect to entries

of similar resolution.

The Analysed column shows the number of residues for which the backbone conformation was analysed, and the total number of residues.

Mol	Chain	Analysed	Favoured	Allowed	Outliers	Percentiles	
1	A	213/215 (99%)	154 (72%)	41 (19%)	18 (8%)	0	4
2	B	158/160 (99%)	89 (56%)	43 (27%)	26 (16%)	0	0
3	C	286/289 (99%)	204 (71%)	51 (18%)	31 (11%)	0	3
4	D	164/179 (92%)	114 (70%)	28 (17%)	22 (13%)	0	1
5	E	30/32 (94%)	15 (50%)	11 (37%)	4 (13%)	0	1
6	F	30/35 (86%)	15 (50%)	8 (27%)	7 (23%)	0	0
7	G	35/37 (95%)	11 (31%)	15 (43%)	9 (26%)	0	0
8	H	27/29 (93%)	15 (56%)	6 (22%)	6 (22%)	0	0
All	All	943/976 (97%)	617 (65%)	203 (22%)	123 (13%)	0	1

5 of 123 Ramachandran outliers are listed below:

Mol	Chain	Res	Type
1	A	16	ALA
1	A	36	LEU
1	A	73	MET
1	A	74	ASN
1	A	112	LYS

5.3.2 Protein sidechains [i](#)

In the following table, the Percentiles column shows the percent sidechain outliers of the chain as a percentile score with respect to all X-ray entries followed by that with respect to entries of similar resolution.

The Analysed column shows the number of residues for which the sidechain conformation was analysed, and the total number of residues.

Mol	Chain	Analysed	Rotameric	Outliers	Percentiles	
1	A	184/184 (100%)	126 (68%)	58 (32%)	0	1
2	B	137/137 (100%)	90 (66%)	47 (34%)	0	1
3	C	242/243 (100%)	153 (63%)	89 (37%)	0	0
4	D	139/146 (95%)	94 (68%)	45 (32%)	0	1
5	E	25/25 (100%)	17 (68%)	8 (32%)	0	1

Continued on next page...

Continued from previous page...

Mol	Chain	Analysed	Rotameric	Outliers	Percentiles	
6	F	24/27 (89%)	11 (46%)	13 (54%)	0	0
7	G	28/28 (100%)	15 (54%)	13 (46%)	0	0
8	H	24/24 (100%)	17 (71%)	7 (29%)	0	1
All	All	803/814 (99%)	523 (65%)	280 (35%)	0	1

5 of 280 residues with a non-rotameric sidechain are listed below:

Mol	Chain	Res	Type
4	D	148	LEU
4	D	179	VAL
7	G	1	MET
2	B	141	ILE
2	B	134	LEU

Sometimes sidechains can be flipped to improve hydrogen bonding and reduce clashes. 5 of 21 such sidechains are listed below:

Mol	Chain	Res	Type
3	C	234	ASN
3	C	288	ASN
4	D	152	HIS
4	D	73	HIS
3	C	250	GLN

5.3.3 RNA [i](#)

There are no RNA molecules in this entry.

5.4 Non-standard residues in protein, DNA, RNA chains [i](#)

There are no non-standard protein/DNA/RNA residues in this entry.

5.5 Carbohydrates [i](#)

There are no oligosaccharides in this entry.

5.6 Ligand geometry

Of 17 ligands modelled in this entry, 1 is monoatomic - leaving 16 for Mogul analysis.

In the following table, the Counts columns list the number of bonds (or angles) for which Mogul statistics could be retrieved, the number of bonds (or angles) that are observed in the model and the number of bonds (or angles) that are defined in the Chemical Component Dictionary. The Link column lists molecule types, if any, to which the group is linked. The Z score for a bond length (or angle) is the number of standard deviations the observed value is removed from the expected value. A bond length (or angle) with $|Z| > 2$ is considered an outlier worth inspection. RMSZ is the root-mean-square of all Z scores of the bond lengths (or angles).

Mol	Type	Chain	Res	Link	Bond lengths			Bond angles		
					Counts	RMSZ	# Z > 2	Counts	RMSZ	# Z > 2
15	TDS	B	1201	-	31,31,31	4.17	15 (48%)	37,40,40	5.20	17 (45%)
11	HEC	C	301	3	46,50,50	2.47	19 (41%)	58,82,82	2.42	14 (24%)
18	BCR	G	101	-	41,41,41	3.48	23 (56%)	56,56,56	6.82	27 (48%)
10	HEM	A	302	1	50,50,50	2.16	18 (36%)	67,82,82	2.06	20 (29%)
15	TDS	B	1202	11	31,31,31	4.21	13 (41%)	37,40,40	5.50	23 (62%)
13	UMQ	A	1102	-	35,35,35	2.17	9 (25%)	46,46,46	3.03	18 (39%)
13	UMQ	A	1103	-	35,35,35	1.98	5 (14%)	46,46,46	2.59	13 (28%)
13	UMQ	A	1104	-	35,35,35	1.58	3 (8%)	46,46,46	3.04	19 (41%)
17	SQD	D	201	-	52,54,54	2.93	25 (48%)	62,65,65	5.06	31 (50%)
13	UMQ	A	1101	-	35,35,35	1.75	5 (14%)	46,46,46	3.05	24 (52%)
12	OPC	B	1001	-	53,53,54	2.28	23 (43%)	59,61,64	2.71	25 (42%)
10	HEM	A	301	1	50,50,50	2.42	15 (30%)	67,82,82	3.40	35 (52%)
12	OPC	A	1002	-	53,53,54	2.05	14 (26%)	59,61,64	2.88	20 (33%)
11	HEC	A	303	19,15,1	46,50,50	2.34	13 (28%)	58,82,82	2.29	20 (34%)
16	FES	D	200	4	0,4,4	-	-	-	-	-
14	CLA	B	201	19	69,73,73	2.10	20 (28%)	82,113,113	3.04	36 (43%)

In the following table, the Chirals column lists the number of chiral outliers, the number of chiral centers analysed, the number of these observed in the model and the number defined in the Chemical Component Dictionary. Similar counts are reported in the Torsion and Rings columns. '-' means no outliers of that kind were identified.

Mol	Type	Chain	Res	Link	Chirals	Torsions	Rings
15	TDS	B	1201	-	-	11/17/17/17	0/2/2/2
11	HEC	C	301	3	-	8/14/54/54	-
18	BCR	G	101	-	-	12/29/63/63	0/2/2/2
10	HEM	A	302	1	-	6/14/54/54	-

Continued on next page...

Continued from previous page...

Mol	Type	Chain	Res	Link	Chirals	Torsions	Rings
15	TDS	B	1202	11	-	11/17/17/17	0/2/2/2
13	UMQ	A	1104	-	2/2/10/10	13/20/60/60	0/2/2/2
13	UMQ	A	1102	-	2/2/10/10	12/20/60/60	0/2/2/2
13	UMQ	A	1103	-	2/2/10/10	11/20/60/60	0/2/2/2
17	SQD	D	201	-	3/3/9/9	27/49/69/69	0/1/1/1
13	UMQ	A	1101	-	2/2/10/10	11/20/60/60	0/2/2/2
12	OPC	B	1001	-	-	23/57/57/60	-
10	HEM	A	301	1	-	5/14/54/54	-
12	OPC	A	1002	-	-	32/57/57/60	-
11	HEC	A	303	19,15,1	-	6/14/54/54	-
16	FES	D	200	4	-	-	0/1/1/1
14	CLA	B	201	19	2/2/15/20	13/39/115/115	-

The worst 5 of 220 bond length outliers are listed below:

Mol	Chain	Res	Type	Atoms	Z	Observed(Å)	Ideal(Å)
15	B	1202	TDS	CAD-CAE	-10.82	1.20	1.38
18	G	101	BCR	C8-C9	-10.35	1.23	1.46
15	B	1202	TDS	CAD-CAL	-10.08	1.21	1.38
15	B	1201	TDS	CAD-CAE	-9.85	1.22	1.38
15	B	1202	TDS	CAM-CAN	9.63	1.54	1.39

The worst 5 of 342 bond angle outliers are listed below:

Mol	Chain	Res	Type	Atoms	Z	Observed(°)	Ideal(°)
18	G	101	BCR	C24-C23-C22	28.08	167.78	126.23
18	G	101	BCR	C7-C8-C9	26.41	165.30	126.23
15	B	1202	TDS	CAE-CAD-CAL	19.11	155.92	118.98
18	G	101	BCR	C8-C7-C6	18.66	176.84	127.00
15	B	1201	TDS	CAE-CAD-CAL	17.87	153.53	118.98

5 of 13 chirality outliers are listed below:

Mol	Chain	Res	Type	Atom
13	A	1101	UMQ	C1'
13	A	1101	UMQ	C2'
13	A	1102	UMQ	C1'
13	A	1102	UMQ	C2'
13	A	1103	UMQ	C1'

5 of 201 torsion outliers are listed below:

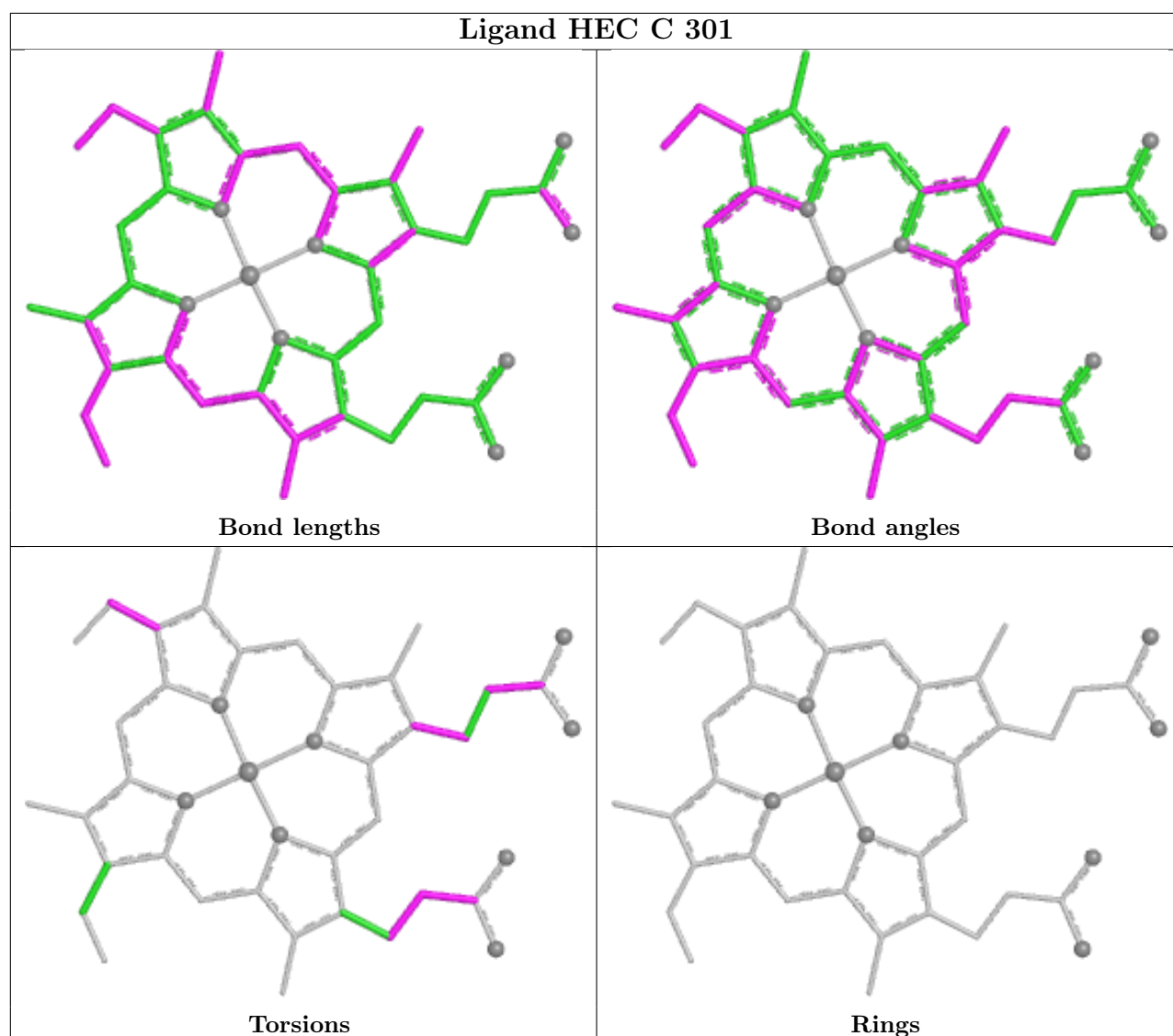
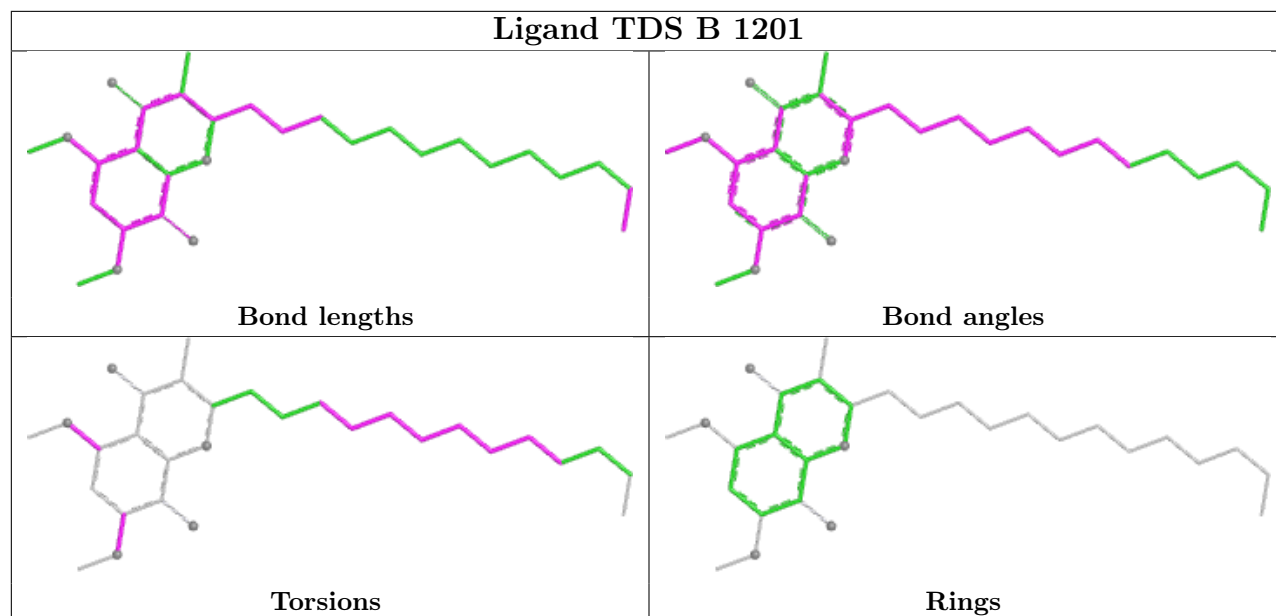
Mol	Chain	Res	Type	Atoms
10	A	301	HEM	C1A-C2A-CAA-CBA
10	A	302	HEM	C1A-C2A-CAA-CBA
10	A	302	HEM	C2D-C3D-CAD-CBD
10	A	302	HEM	C4D-C3D-CAD-CBD
11	A	303	HEC	C2B-C3B-CAB-CBB

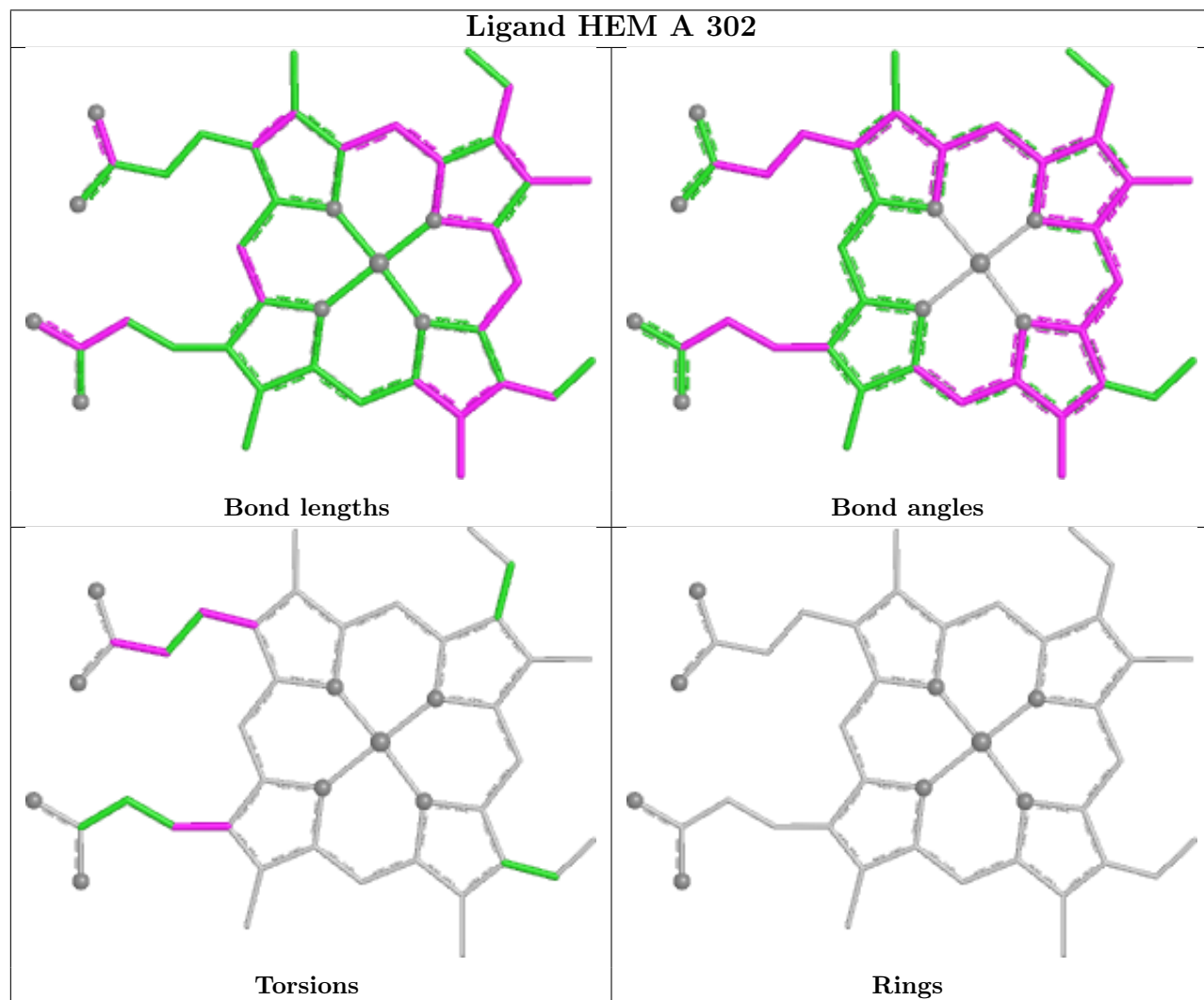
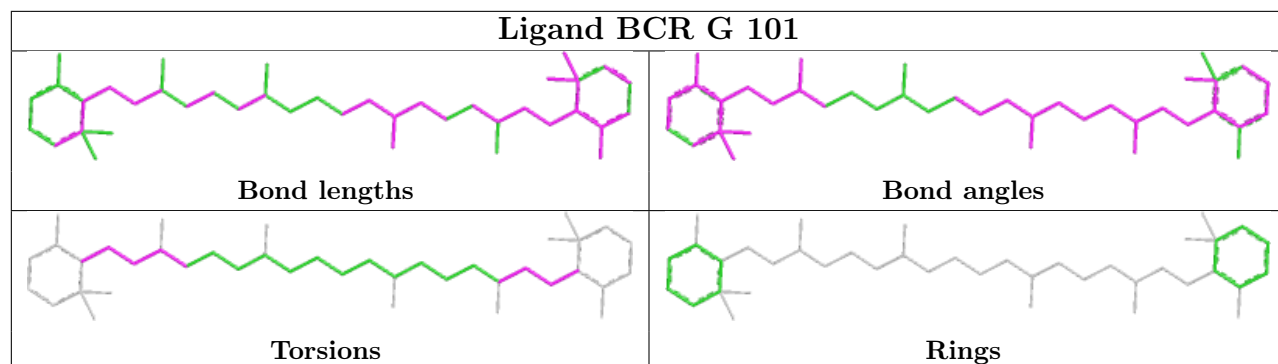
There are no ring outliers.

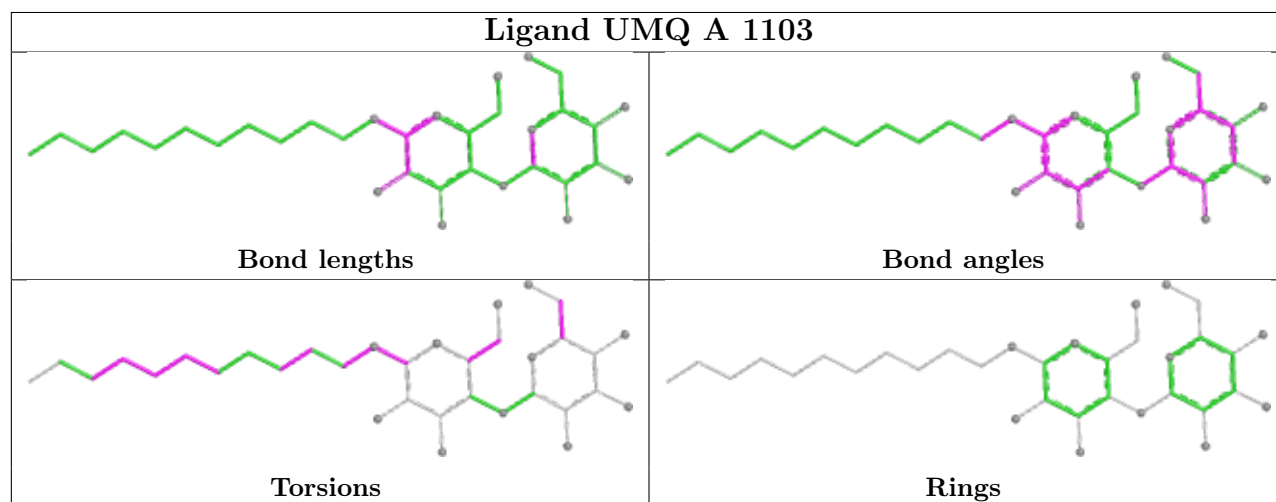
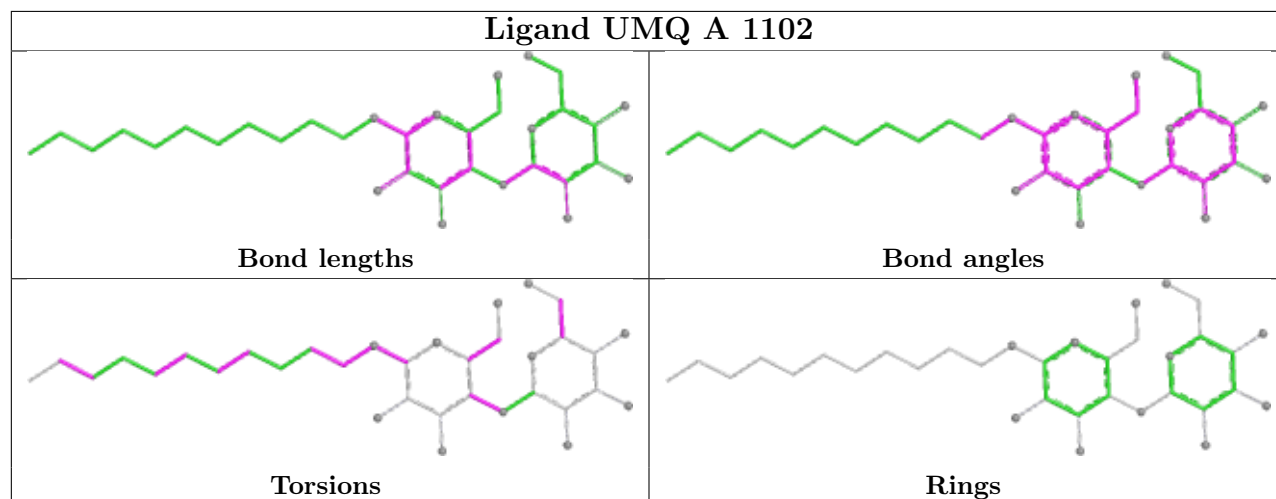
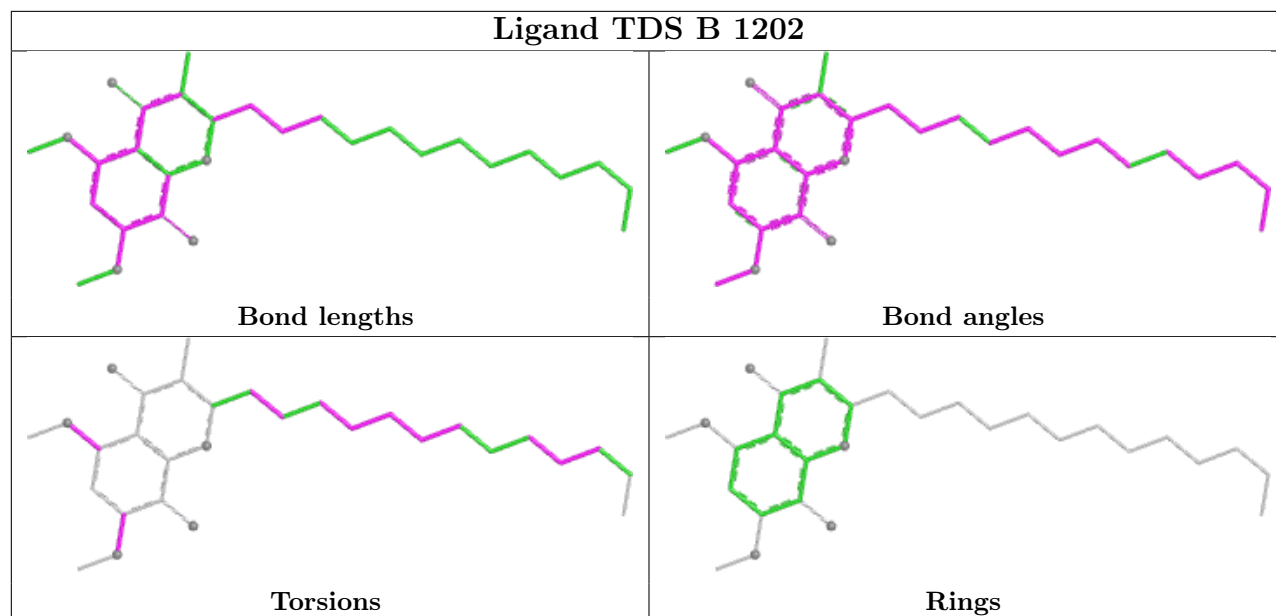
15 monomers are involved in 173 short contacts:

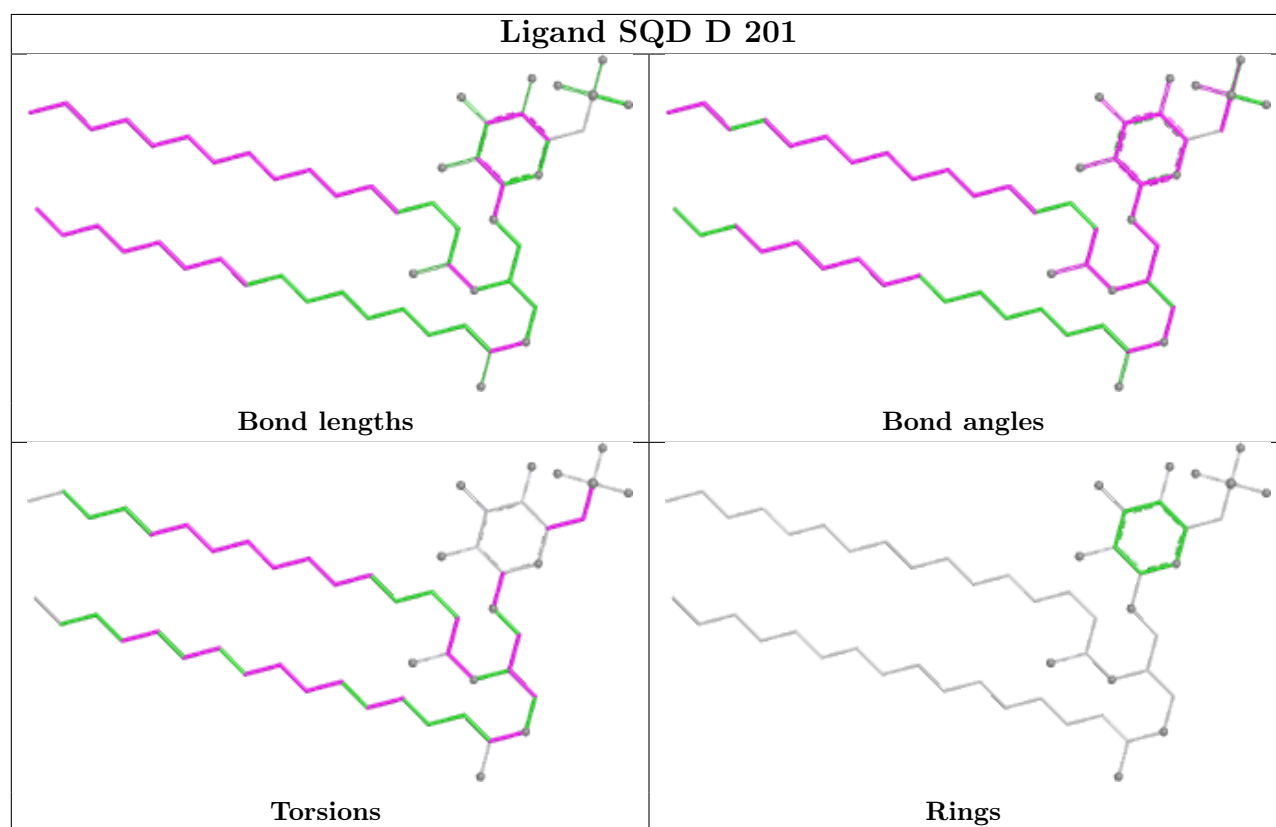
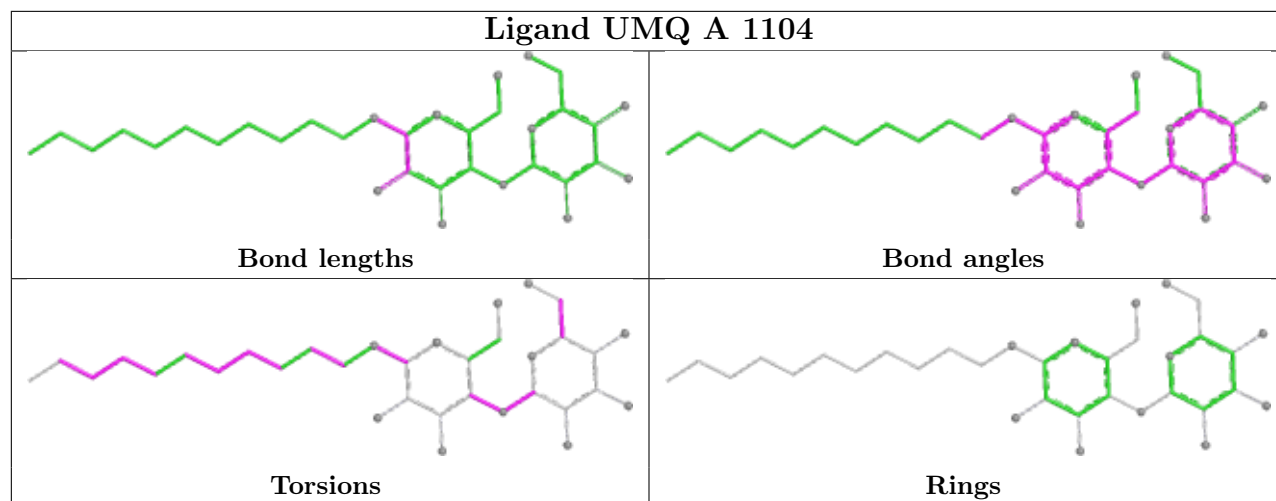
Mol	Chain	Res	Type	Clashes	Symm-Clashes
15	B	1201	TDS	20	0
11	C	301	HEC	29	0
18	G	101	BCR	9	0
10	A	302	HEM	22	0
15	B	1202	TDS	18	0
13	A	1102	UMQ	1	0
13	A	1104	UMQ	3	0
17	D	201	SQD	9	0
13	A	1101	UMQ	2	0
12	B	1001	OPC	2	0
10	A	301	HEM	19	0
12	A	1002	OPC	17	0
11	A	303	HEC	23	0
16	D	200	FES	1	0
14	B	201	CLA	6	0

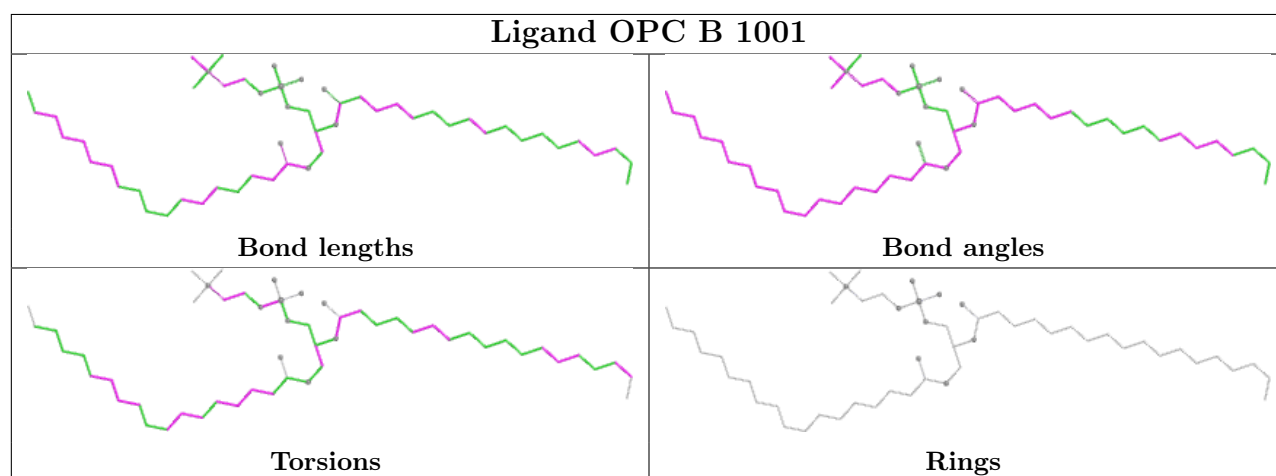
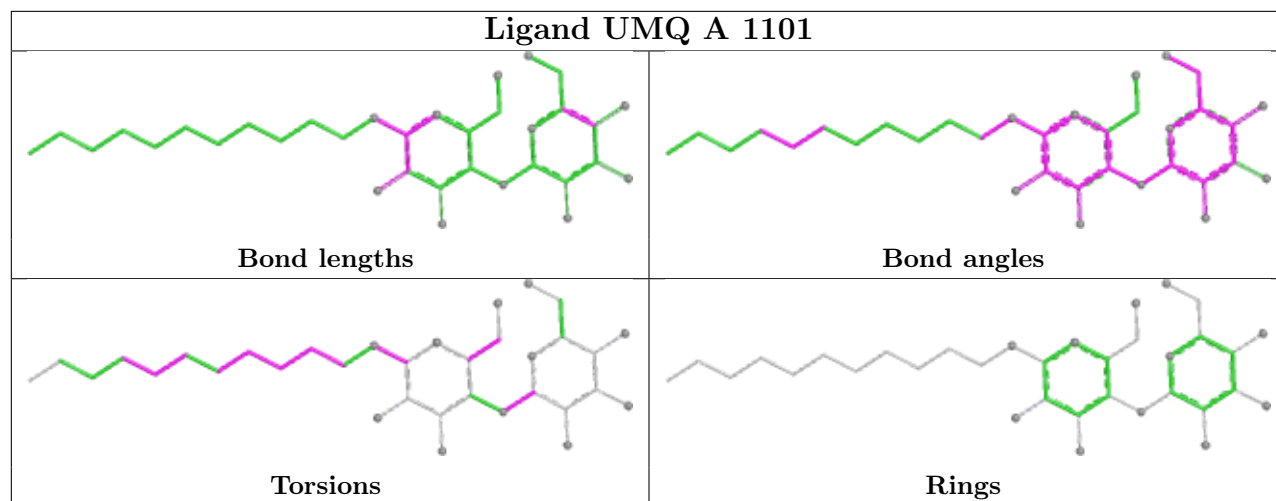
The following is a two-dimensional graphical depiction of Mogul quality analysis of bond lengths, bond angles, torsion angles, and ring geometry for all instances of the Ligand of Interest. In addition, ligands with molecular weight > 250 and outliers as shown on the validation Tables will also be included. For torsion angles, if less than 5% of the Mogul distribution of torsion angles is within 10 degrees of the torsion angle in question, then that torsion angle is considered an outlier. Any bond that is central to one or more torsion angles identified as an outlier by Mogul will be highlighted in the graph. For rings, the root-mean-square deviation (RMSD) between the ring in question and similar rings identified by Mogul is calculated over all ring torsion angles. If the average RMSD is greater than 60 degrees and the minimal RMSD between the ring in question and any Mogul-identified rings is also greater than 60 degrees, then that ring is considered an outlier. The outliers are highlighted in purple. The color gray indicates Mogul did not find sufficient equivalents in the CSD to analyse the geometry.

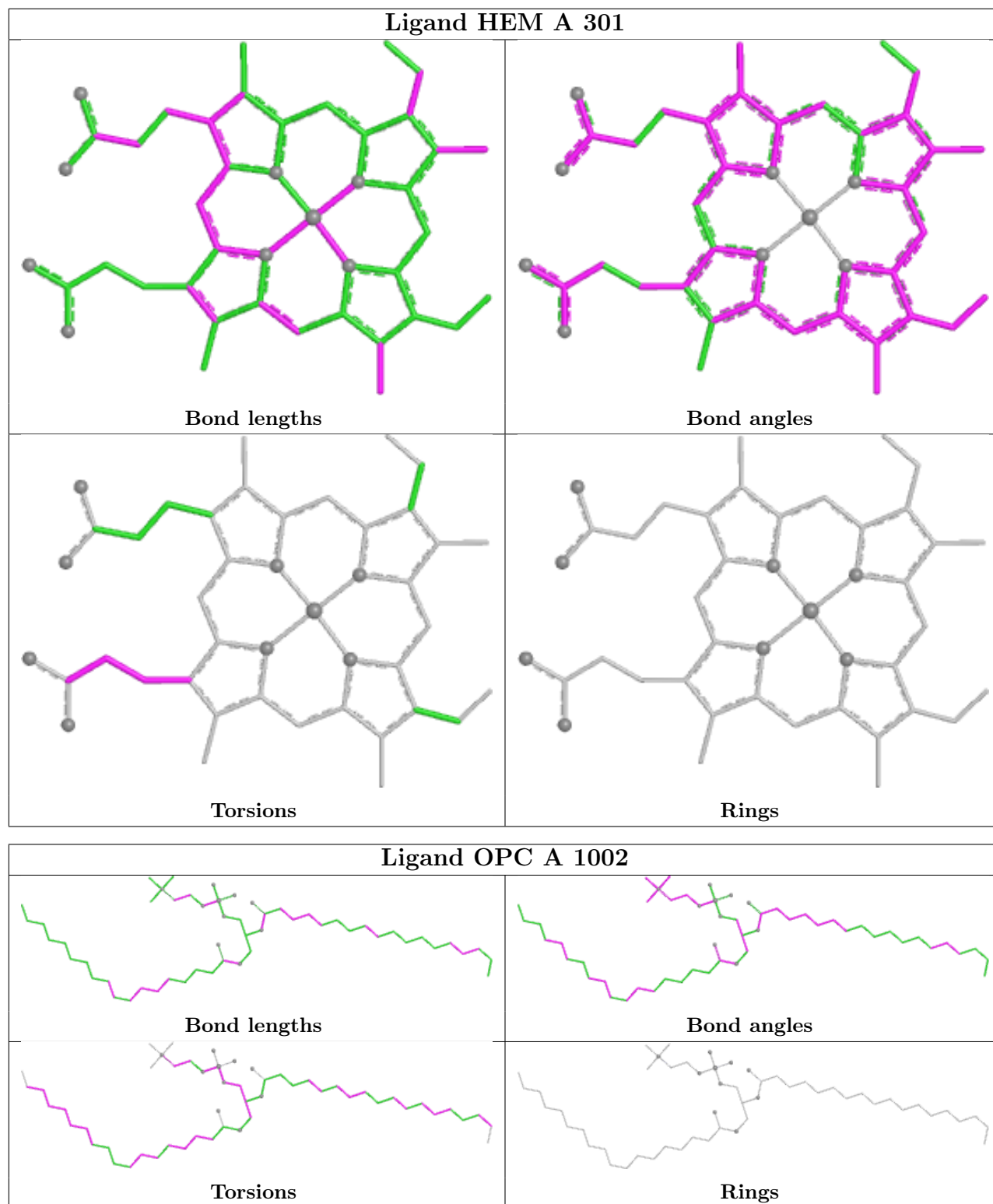


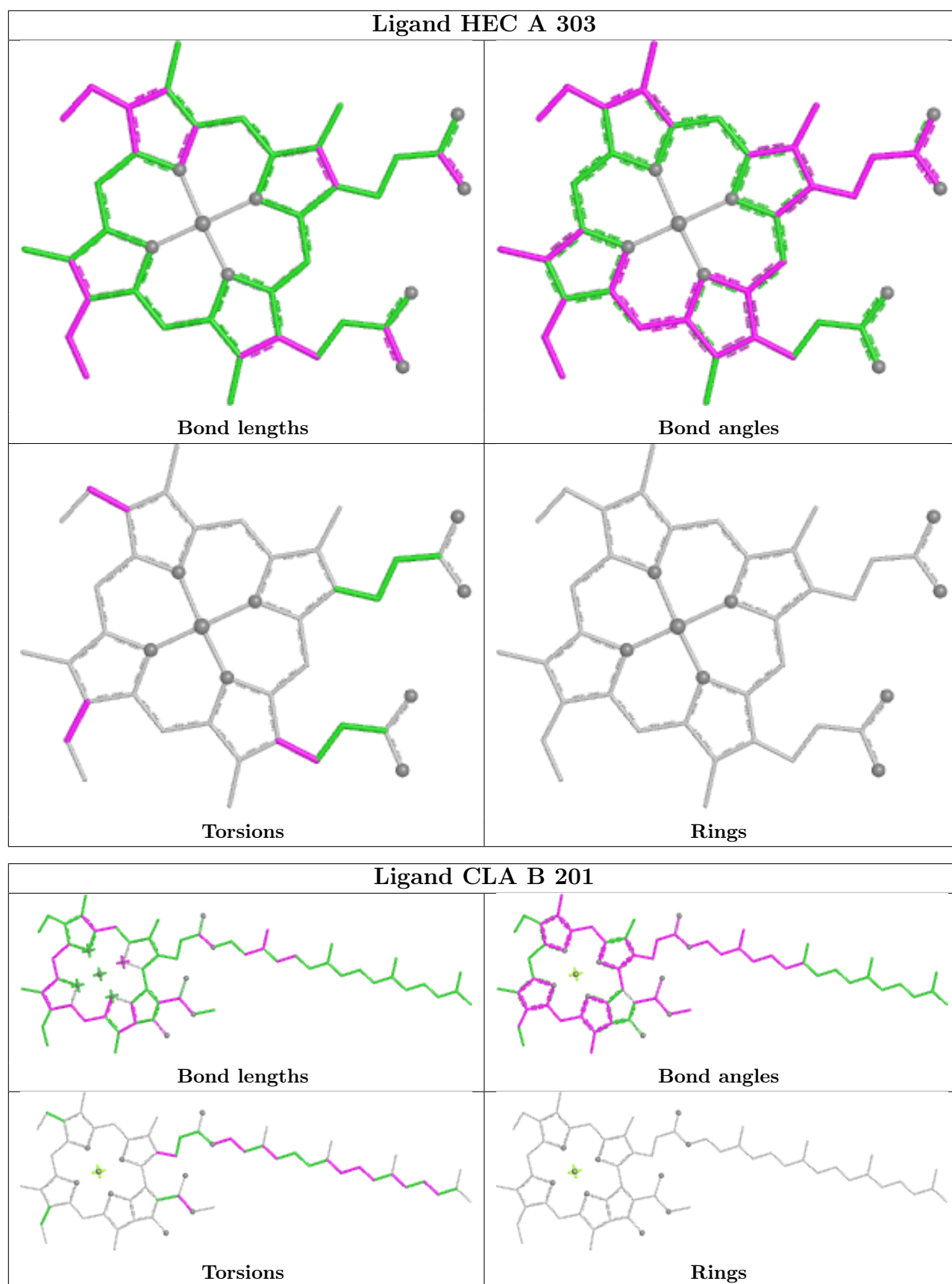












5.7 Other polymers [i](#)

There are no such residues in this entry.

5.8 Polymer linkage issues [i](#)

There are no chain breaks in this entry.

6 Fit of model and data [i](#)

6.1 Protein, DNA and RNA chains [i](#)

In the following table, the column labelled ‘#RSRZ > 2’ contains the number (and percentage) of RSRZ outliers, followed by percent RSRZ outliers for the chain as percentile scores relative to all X-ray entries and entries of similar resolution. The OWAB column contains the minimum, median, 95th percentile and maximum values of the occupancy-weighted average B-factor per residue. The column labelled ‘Q < 0.9’ lists the number of (and percentage) of residues with an average occupancy less than 0.9.

Mol	Chain	Analysed	<RSRZ>	#RSRZ>2	OWAB(Å ²)	Q<0.9
1	A	215/215 (100%)	-0.62	2 (0%) 81 69	5, 31, 72, 170	0
2	B	160/160 (100%)	-0.25	4 (2%) 58 43	22, 50, 97, 146	0
3	C	288/289 (99%)	0.85	32 (11%) 10 11	4, 55, 142, 159	1 (0%)
4	D	168/179 (93%)	1.49	45 (26%) 1 2	24, 90, 140, 156	0
5	E	32/32 (100%)	0.02	2 (6%) 26 20	39, 63, 93, 110	0
6	F	32/35 (91%)	0.15	4 (12%) 8 9	35, 50, 112, 121	0
7	G	37/37 (100%)	-0.08	3 (8%) 18 15	29, 44, 119, 138	0
8	H	29/29 (100%)	-0.42	1 (3%) 48 35	31, 42, 72, 95	0
All	All	961/976 (98%)	0.33	93 (9%) 13 13	4, 52, 132, 170	1 (0%)

The worst 5 of 93 RSRZ outliers are listed below:

Mol	Chain	Res	Type	RSRZ
4	D	96	LYS	9.7
3	C	40	VAL	7.8
4	D	95	SER	7.5
4	D	141	ARG	7.0
4	D	157	ASP	7.0

6.2 Non-standard residues in protein, DNA, RNA chains [i](#)

There are no non-standard protein/DNA/RNA residues in this entry.

6.3 Carbohydrates [i](#)

There are no oligosaccharides in this entry.

6.4 Ligands

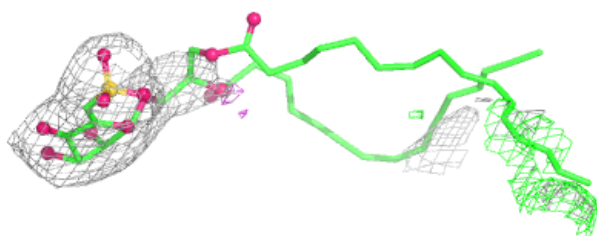
In the following table, the Atoms column lists the number of modelled atoms in the group and the number defined in the chemical component dictionary. The B-factors column lists the minimum, median, 95th percentile and maximum values of B factors of atoms in the group. The column labelled 'Q< 0.9' lists the number of atoms with occupancy less than 0.9.

Mol	Type	Chain	Res	Atoms	RSCC	RSR	B-factors(Å ²)	Q<0.9
17	SQD	D	201	54/54	0.79	0.27	44,147,189,215	0
13	UMQ	A	1102	34/34	0.86	0.18	47,118,166,176	0
12	OPC	A	1002	54/55	0.86	0.22	19,84,180,191	0
13	UMQ	A	1104	34/34	0.87	0.15	61,129,164,178	0
13	UMQ	A	1103	34/34	0.88	0.14	58,109,133,141	0
18	BCR	G	101	40/40	0.90	0.19	24,63,149,159	0
15	TDS	B	1201	30/30	0.92	0.17	46,83,113,127	0
13	UMQ	A	1101	34/34	0.93	0.13	18,110,147,150	0
12	OPC	B	1001	54/55	0.95	0.14	28,80,117,123	0
15	TDS	B	1202	30/30	0.96	0.11	32,78,98,120	0
14	CLA	B	201	65/65	0.97	0.10	23,51,105,119	0
11	HEC	A	303	43/43	0.98	0.07	21,48,67,87	0
16	FES	D	200	4/4	0.98	0.08	59,69,70,72	0
10	HEM	A	301	43/43	0.99	0.06	2,21,41,74	0
10	HEM	A	302	43/43	0.99	0.07	6,26,45,63	0
9	CD	A	216	1/1	0.99	0.03	63,63,63,63	0
11	HEC	C	301	43/43	0.99	0.05	3,35,79,104	0

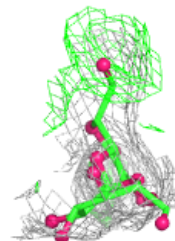
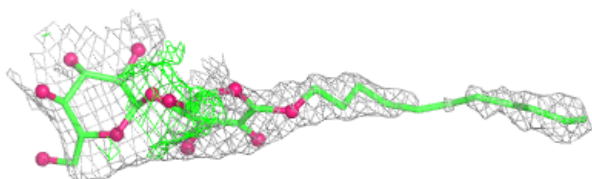
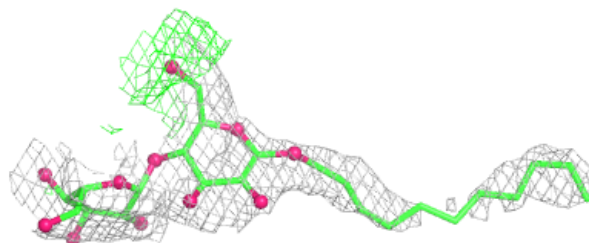
The following is a graphical depiction of the model fit to experimental electron density of all instances of the Ligand of Interest. In addition, ligands with molecular weight > 250 and outliers as shown on the geometry validation Tables will also be included. Each fit is shown from different orientation to approximate a three-dimensional view.

Electron density around SQD D 201:

$2mF_o-DF_c$ (at 0.7 rmsd) in gray
 mF_o-DF_c (at 3 rmsd) in purple (negative)
and green (positive)

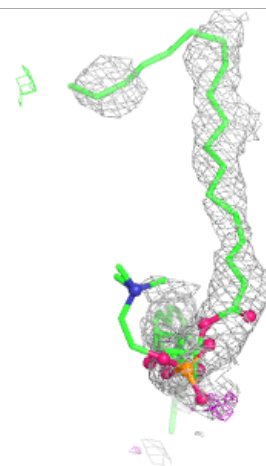
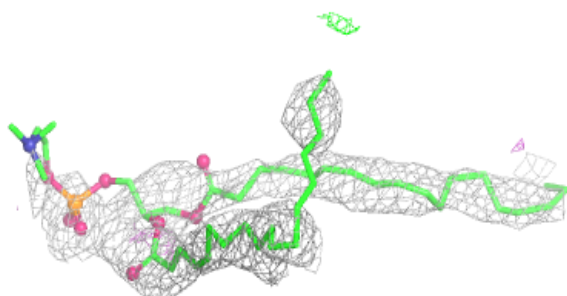
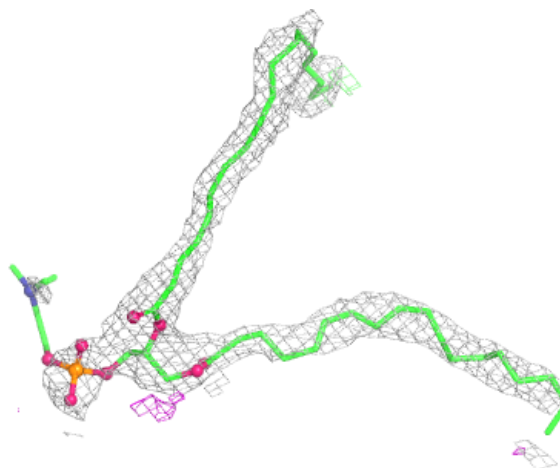
**Electron density around UMQ A 1102:**

$2mF_o-DF_c$ (at 0.7 rmsd) in gray
 mF_o-DF_c (at 3 rmsd) in purple (negative)
and green (positive)



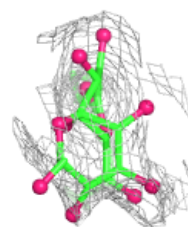
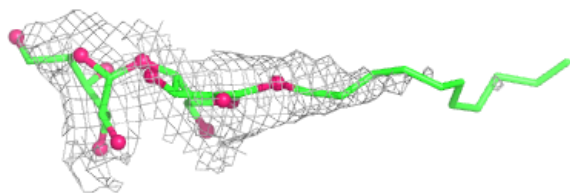
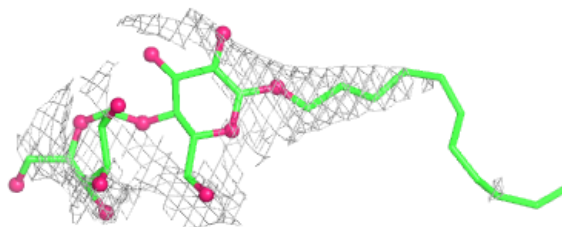
Electron density around OPC A 1002:

$2mF_o-DF_c$ (at 0.7 rmsd) in gray
 mF_o-DF_c (at 3 rmsd) in purple (negative)
and green (positive)

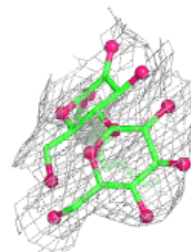
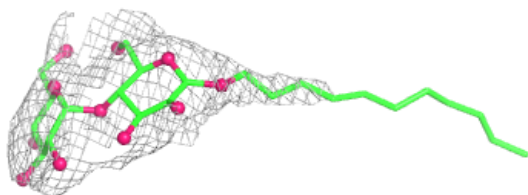
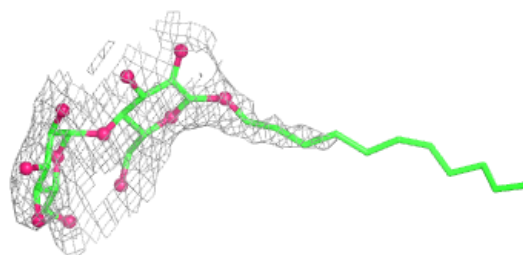


Electron density around UMQ A 1104:

$2mF_o-DF_c$ (at 0.7 rmsd) in gray
 mF_o-DF_c (at 3 rmsd) in purple (negative)
and green (positive)

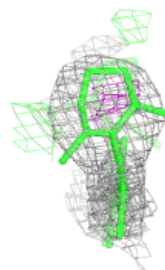
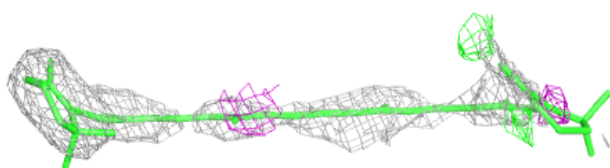
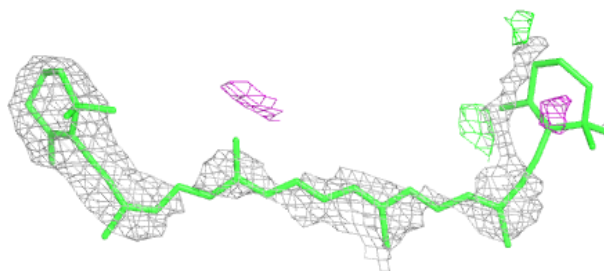
**Electron density around UMQ A 1103:**

$2mF_o-DF_c$ (at 0.7 rmsd) in gray
 mF_o-DF_c (at 3 rmsd) in purple (negative)
and green (positive)

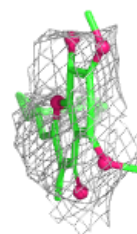
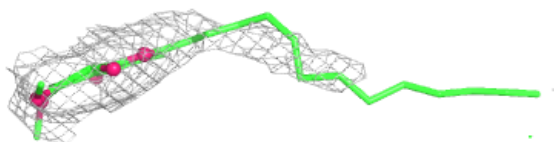
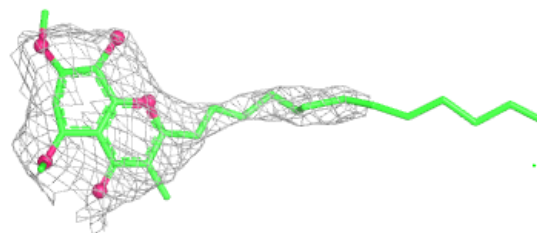


Electron density around BCR G 101:

$2mF_o-DF_c$ (at 0.7 rmsd) in gray
 mF_o-DF_c (at 3 rmsd) in purple (negative)
and green (positive)

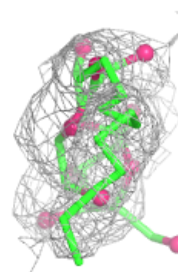
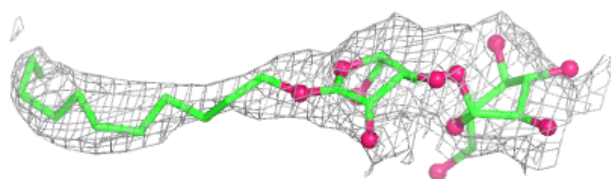
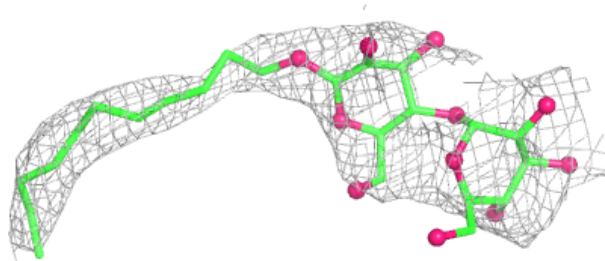
**Electron density around TDS B 1201:**

$2mF_o-DF_c$ (at 0.7 rmsd) in gray
 mF_o-DF_c (at 3 rmsd) in purple (negative)
and green (positive)

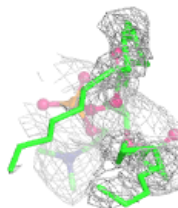
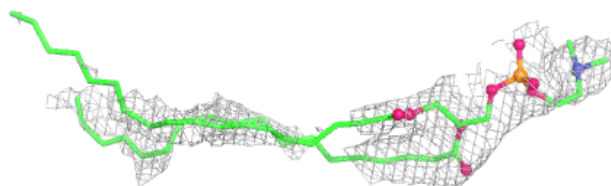
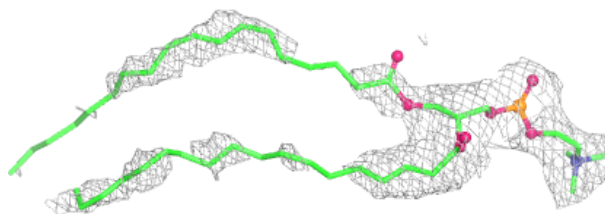


Electron density around UMQ A 1101:

$2mF_o-DF_c$ (at 0.7 rmsd) in gray
 mF_o-DF_c (at 3 rmsd) in purple (negative)
and green (positive)

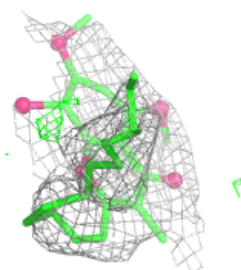
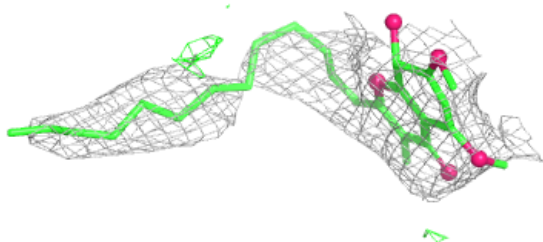
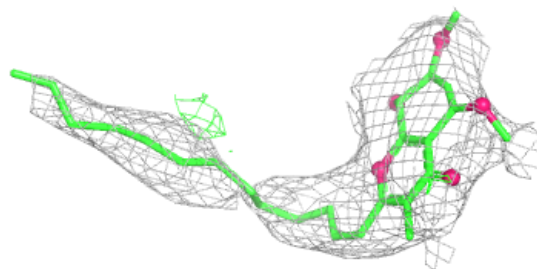
**Electron density around OPC B 1001:**

$2mF_o-DF_c$ (at 0.7 rmsd) in gray
 mF_o-DF_c (at 3 rmsd) in purple (negative)
and green (positive)

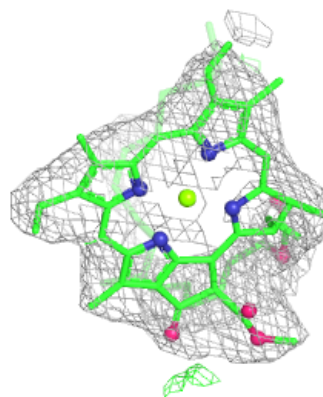
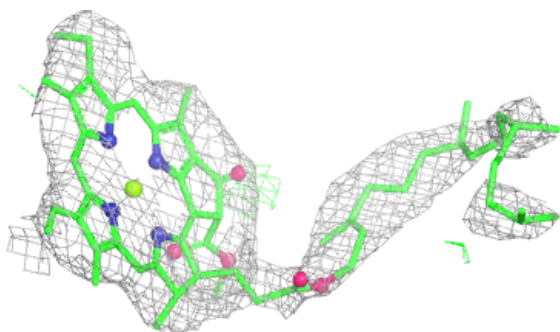
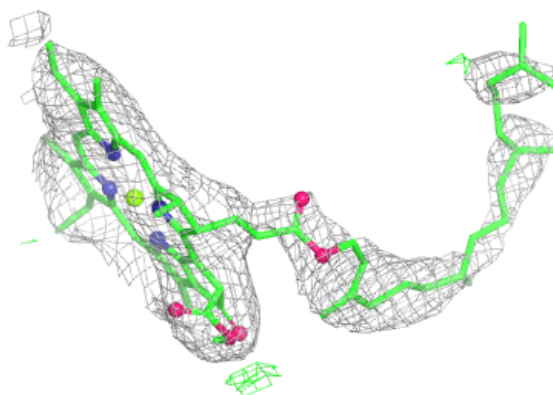


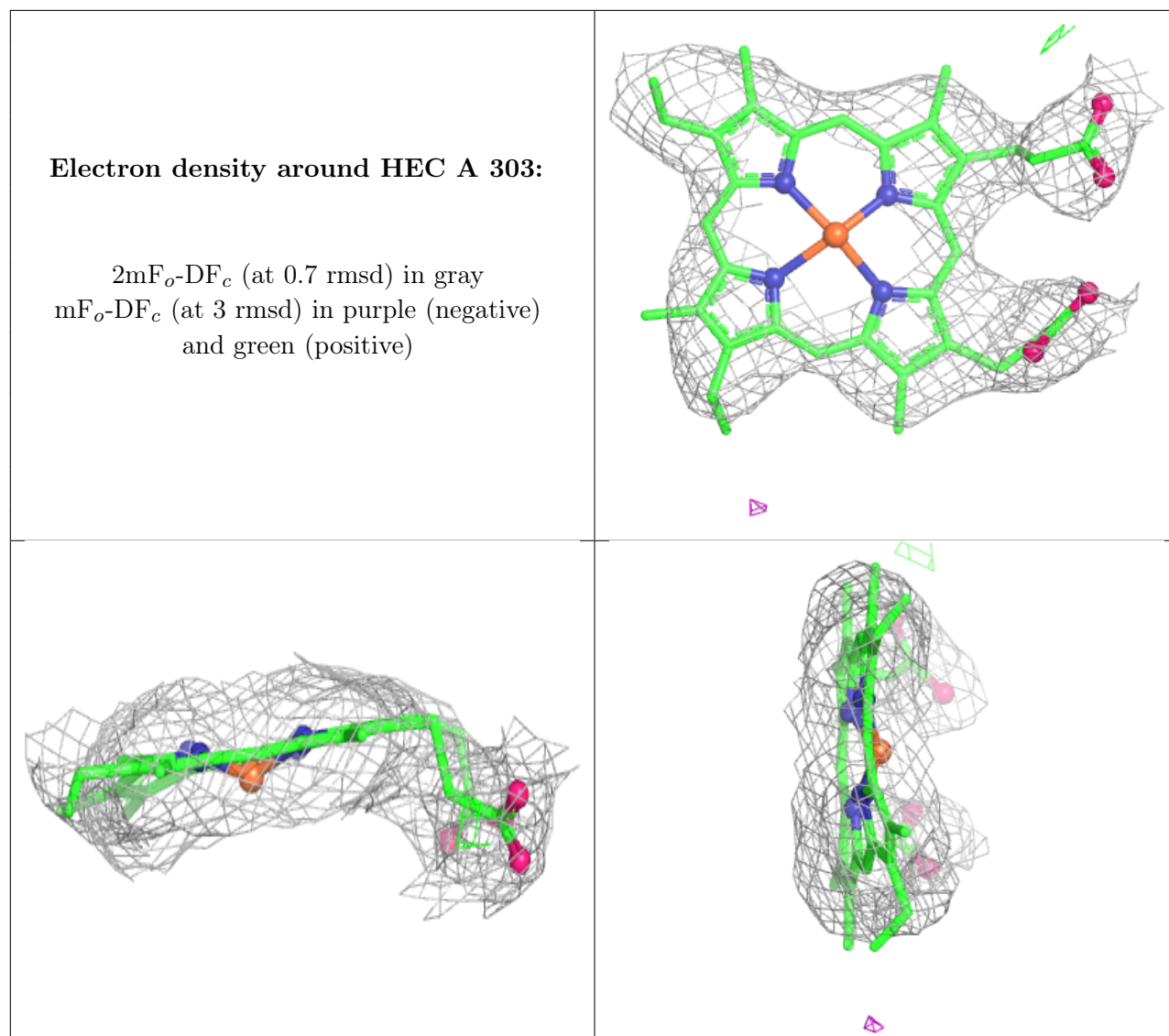
Electron density around TDS B 1202:

$2mF_o-DF_c$ (at 0.7 rmsd) in gray
 mF_o-DF_c (at 3 rmsd) in purple (negative)
and green (positive)

**Electron density around CLA B 201:**

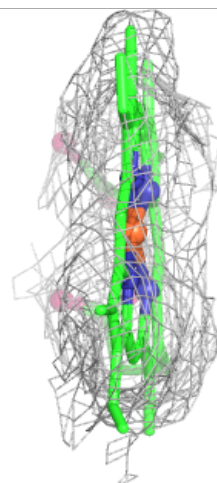
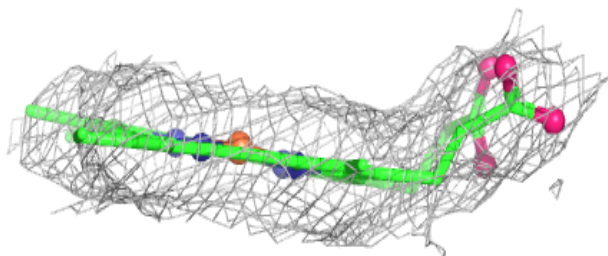
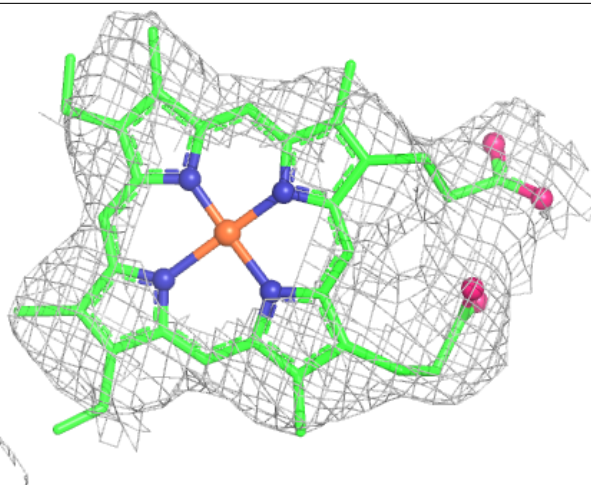
$2mF_o-DF_c$ (at 0.7 rmsd) in gray
 mF_o-DF_c (at 3 rmsd) in purple (negative)
and green (positive)





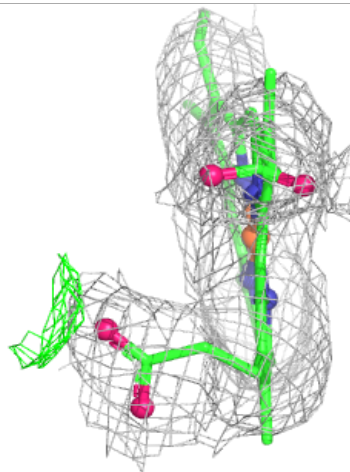
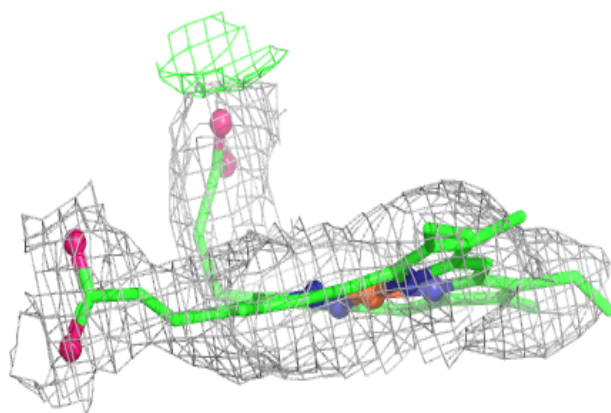
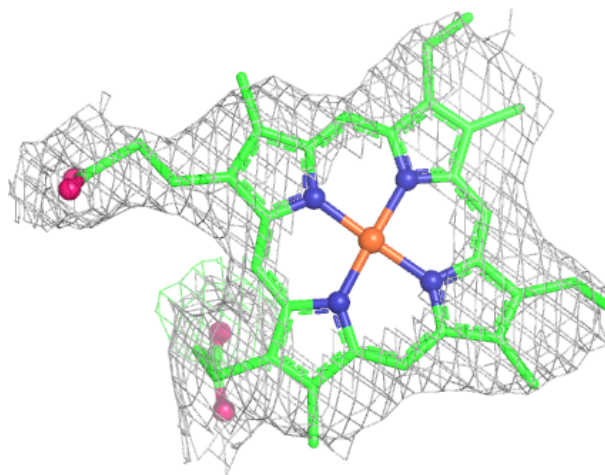
Electron density around HEM A 301:

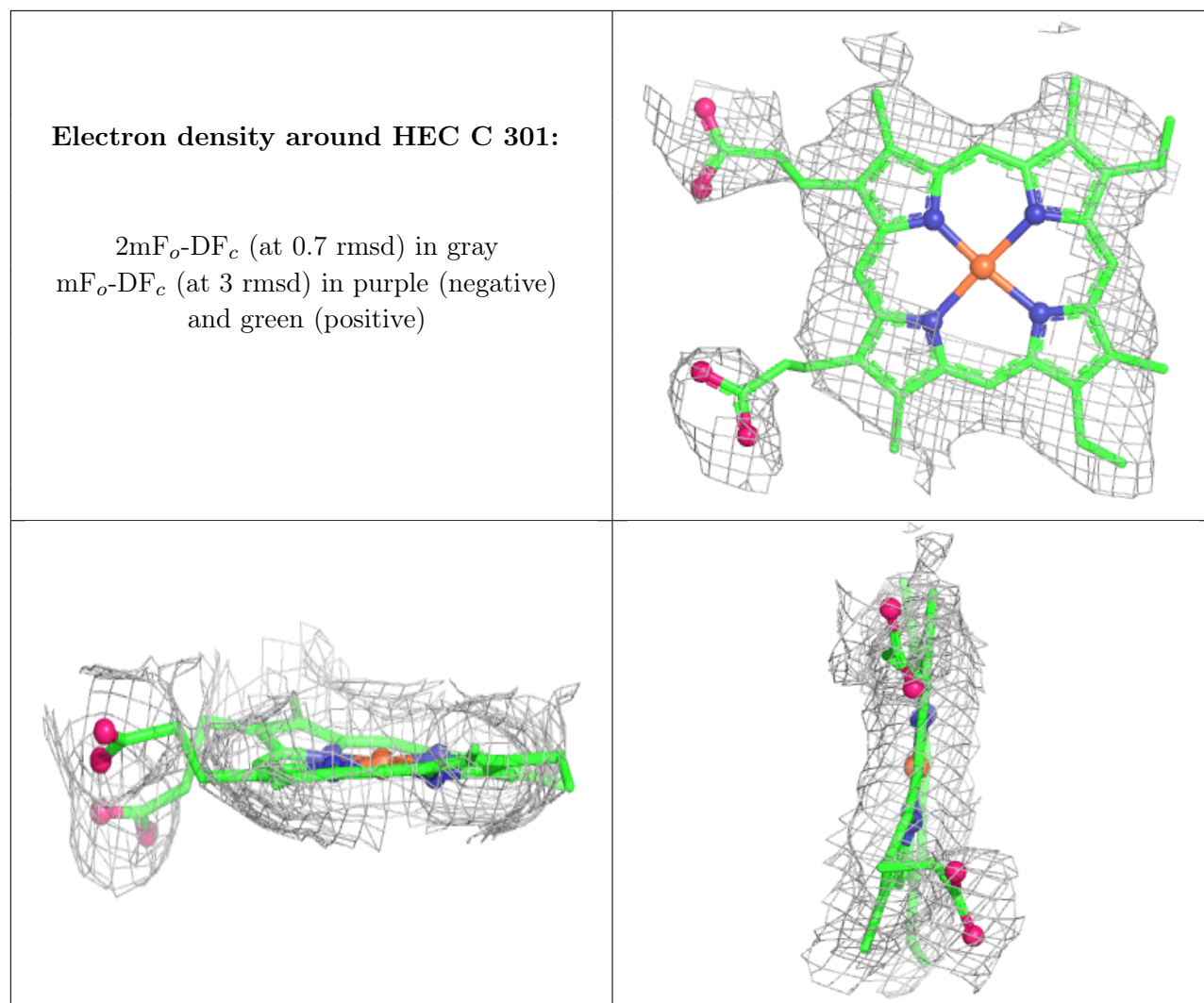
$2mF_o-DF_c$ (at 0.7 rmsd) in gray
 mF_o-DF_c (at 3 rmsd) in purple (negative)
and green (positive)



Electron density around HEM A 302:

$2mF_o-DF_c$ (at 0.7 rmsd) in gray
 mF_o-DF_c (at 3 rmsd) in purple (negative)
and green (positive)





6.5 Other polymers [i](#)

There are no such residues in this entry.