



wwPDB X-ray Structure Validation Summary Report ⓘ

Mar 18, 2026 – 04:17 AM UTC

PDB ID : 4E6W / pdb_00004e6w
Title : ClbP in complex with 3-aminophenyl boronic acid
Authors : Cougnoux, A.; Delmas, J.; Bonnet, R.
Deposited on : 2012-03-16
Resolution : 2.19 Å(reported)

This is a wwPDB X-ray Structure Validation Summary Report for a publicly released PDB entry.

We welcome your comments at validation@mail.wwpdb.org

A user guide is available at

<https://www.wwpdb.org/validation/2017/XrayValidationReportHelp>

with specific help available everywhere you see the ⓘ symbol.

The types of validation reports are described at

<http://www.wwpdb.org/validation/2017/FAQs#types>.

The following versions of software and data (see [references ⓘ](#)) were used in the production of this report:

MolProbity : 4-5-2 with Phenix2.0
Mogul : 2022.3.0, CSD as543be (2022)
Xtrriage (Phenix) : 2.0
EDS : 3.0
Percentile statistics : 20250101.v01 (using entries in the PDB archive January 1st 2025)
CCP4 : 9.0.010 (Gargrove)
Density-Fitness : 1.0.12
Ideal geometry (proteins) : Engh & Huber (2001)
Ideal geometry (DNA, RNA) : Parkinson et al. (1996)
Validation Pipeline (wwPDB-VP) : 2.49

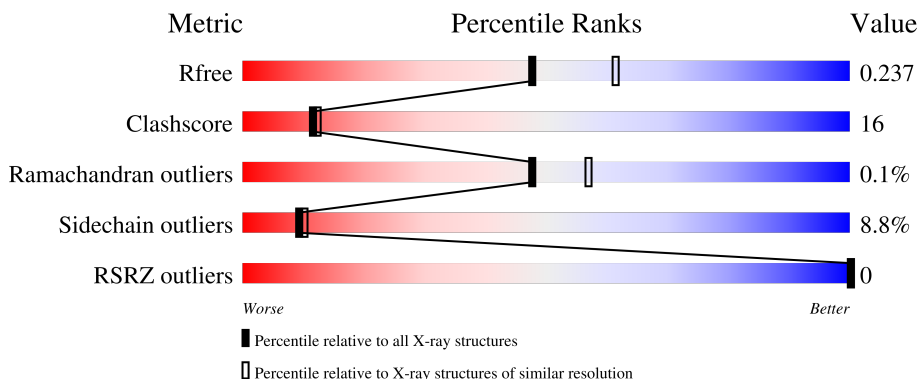
1 Overall quality at a glance

The following experimental techniques were used to determine the structure:

X-RAY DIFFRACTION

The reported resolution of this entry is 2.19 Å.

Percentile scores (ranging between 0-100) for global validation metrics of the entry are shown in the following graphic. The table shows the number of entries on which the scores are based.



Metric	Whole archive (#Entries)	Similar resolution (#Entries, resolution range(Å))
R_{free}	180053	6164 (2.20-2.20)
Clashscore	190562	6851 (2.20-2.20)
Ramachandran outliers	187476	6768 (2.20-2.20)
Sidechain outliers	187428	6769 (2.20-2.20)
RSRZ outliers	180081	6166 (2.20-2.20)

The table below summarises the geometric issues observed across the polymeric chains and their fit to the electron density. The red, orange, yellow and green segments of the lower bar indicate the fraction of residues that contain outliers for ≥ 3 , 2, 1 and 0 types of geometric quality criteria respectively. A grey segment represents the fraction of residues that are not modelled. The numeric value for each fraction is indicated below the corresponding segment, with a dot representing fractions $\leq 5\%$. The upper red bar (where present) indicates the fraction of residues that have poor fit to the electron density. The numeric value is given above the bar.

Mol	Chain	Length	Quality of chain
1	A	335	
1	B	335	
1	C	335	

The following table lists non-polymeric compounds, carbohydrate monomers and non-standard residues in protein, DNA, RNA chains that are outliers for geometric or electron-density-fit criteria:

Mol	Type	Chain	Res	Chirality	Geometry	Clashes	Electron density
2	APB	A	400	-	-	X	-
2	APB	B	400	-	-	X	-
2	APB	C	400	-	-	X	-
3	PO4	C	401	-	-	X	-

2 Entry composition [i](#)

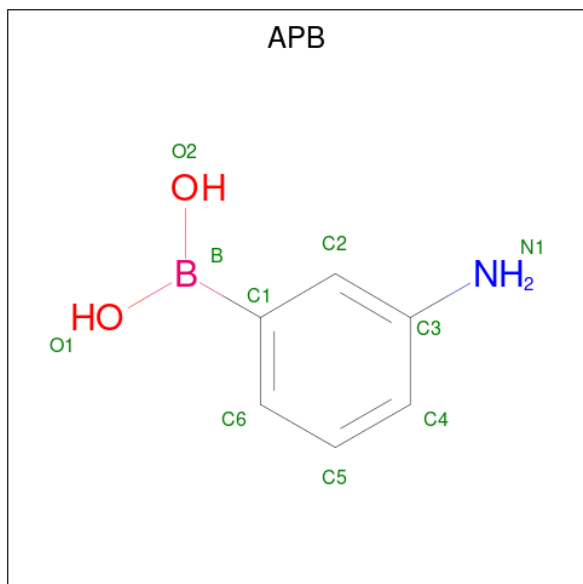
There are 4 unique types of molecules in this entry. The entry contains 8086 atoms, of which 0 are hydrogens and 0 are deuteriums.

In the tables below, the ZeroOcc column contains the number of atoms modelled with zero occupancy, the AltConf column contains the number of residues with at least one atom in alternate conformation and the Trace column contains the number of residues modelled with at most 2 atoms.

- Molecule 1 is a protein called ClbP peptidase.

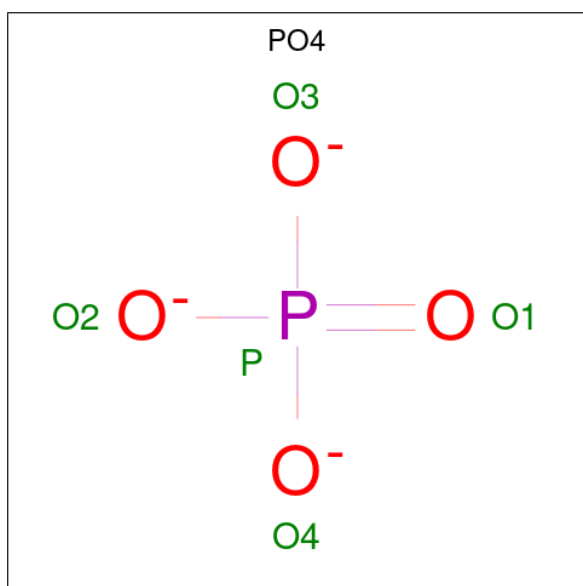
Mol	Chain	Residues	Atoms					ZeroOcc	AltConf	Trace
			Total	C	N	O	S			
1	A	329	Total 2537	C 1613	N 446	O 469	S 9	0	0	0
1	B	332	Total 2552	C 1622	N 447	O 474	S 9	0	0	0
1	C	330	Total 2537	C 1611	N 445	O 472	S 9	0	0	0

- Molecule 2 is M-AMINOPHENYLBORONIC ACID (CCD ID: APB) (formula: C₆H₈BNO₂).



Mol	Chain	Residues	Atoms				ZeroOcc	AltConf	
			Total	B	C	N			O
2	A	1	Total 10	B 1	C 6	N 1	O 2	0	0
2	B	1	Total 10	B 1	C 6	N 1	O 2	0	0
2	C	1	Total 10	B 1	C 6	N 1	O 2	0	0

- Molecule 3 is PHOSPHATE ION (CCD ID: PO4) (formula: O_4P).



Mol	Chain	Residues	Atoms	ZeroOcc	AltConf
3	A	1	Total O P 5 4 1	0	0
3	A	1	Total O P 5 4 1	0	0
3	B	1	Total O P 5 4 1	0	0
3	B	1	Total O P 5 4 1	0	0
3	C	1	Total O P 5 4 1	0	0
3	C	1	Total O P 5 4 1	0	0

- Molecule 4 is water.

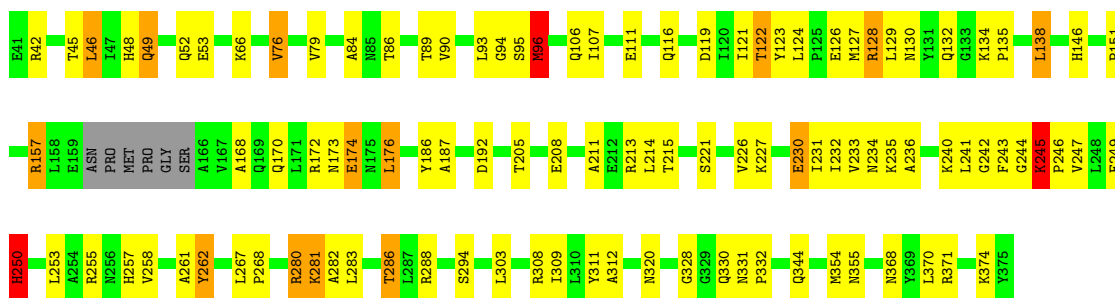
Mol	Chain	Residues	Atoms	ZeroOcc	AltConf
4	A	131	Total O 131 131	0	0
4	B	128	Total O 128 128	0	0
4	C	141	Total O 141 141	0	0

3 Residue-property plots

These plots are drawn for all protein, RNA, DNA and oligosaccharide chains in the entry. The first graphic for a chain summarises the proportions of the various outlier classes displayed in the second graphic. The second graphic shows the sequence view annotated by issues in geometry and electron density. Residues are color-coded according to the number of geometric quality criteria for which they contain at least one outlier: green = 0, yellow = 1, orange = 2 and red = 3 or more. A red dot above a residue indicates a poor fit to the electron density ($RSRZ > 2$). Stretches of 2 or more consecutive residues without any outlier are shown as a green connector. Residues present in the sample, but not in the model, are shown in grey.

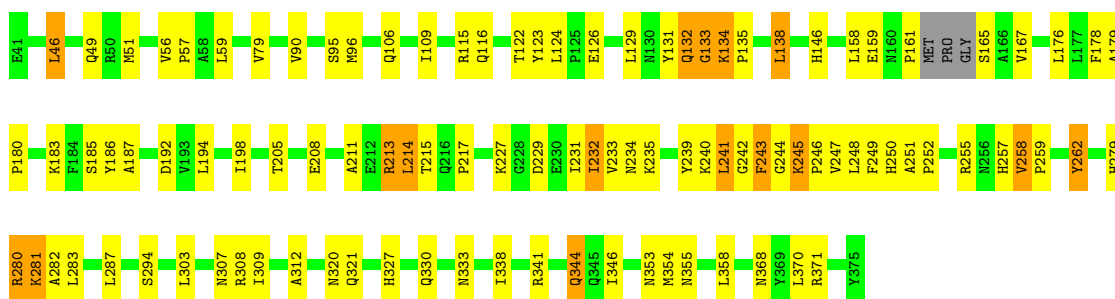
- Molecule 1: ClbP peptidase

Chain A: 



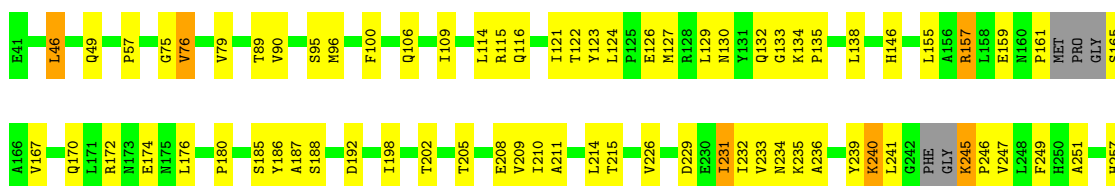
- Molecule 1: ClbP peptidase

Chain B: 



- Molecule 1: ClbP peptidase

Chain C: 





4 Data and refinement statistics

Property	Value	Source
Space group	C 1 2 1	Depositor
Cell constants a, b, c, α , β , γ	104.49Å 149.36Å 88.24Å 90.00° 124.21° 90.00°	Depositor
Resolution (Å)	52.20 – 2.19 52.20 – 2.19	Depositor EDS
% Data completeness (in resolution range)	99.5 (52.20-2.19) 99.0 (52.20-2.19)	Depositor EDS
R_{merge}	(Not available)	Depositor
R_{sym}	(Not available)	Depositor
$\langle I/\sigma(I) \rangle$ ¹	3.15 (at 2.20Å)	Xtriage
Refinement program	REFMAC 5.5.0110	Depositor
R, R_{free}	0.195 , 0.240 0.193 , 0.237	Depositor DCC
R_{free} test set	2904 reflections (5.07%)	wwPDB-VP
Wilson B-factor (Å ²)	21.8	Xtriage
Anisotropy	0.026	Xtriage
Bulk solvent k_{sol} (e/Å ³), B_{sol} (Å ²)	0.37 , 24.3	EDS
L-test for twinning ²	$\langle L \rangle = 0.49$, $\langle L^2 \rangle = 0.32$	Xtriage
Estimated twinning fraction	0.015 for $-1/2^*h+1/2^*k-1,3/2^*h+1/2^*k+1,1/2^*h-1/2^*k$ 0.014 for $1/2^*h-1/2^*k+1,-1/2^*h+1/2^*k+1,-h$ 0.014 for $1/2^*h+1/2^*k+1,1/2^*h+1/2^*k-1,-h$ 0.013 for $-1/2^*h-1/2^*k-1,-3/2^*h+1/2^*k-1,1/2^*h+1/2^*k$ 0.019 for $-h,-h-2^*1,1/2^*h-1/2^*k$ 0.013 for $-h,h+2^*1,1/2^*h+1/2^*k$ 0.468 for $1/2^*h+1/2^*k+1,3/2^*h-1/2^*k+1,-1$ 0.468 for $1/2^*h-1/2^*k+1,-3/2^*h-1/2^*k-1,-1$ 0.015 for $-1/2^*h+1/2^*k-1,1/2^*h-1/2^*k-1,-1/2^*h-1/2^*k$ 0.019 for $-1/2^*h-1/2^*k-1,-1/2^*h-1/2^*k+1,-1/2^*h+1/2^*k$ 0.018 for $h,-k,-h-1$	Xtriage
F_o, F_c correlation	0.96	EDS
Total number of atoms	8086	wwPDB-VP
Average B, all atoms (Å ²)	27.0	wwPDB-VP

¹Intensities estimated from amplitudes.

²Theoretical values of $\langle |L| \rangle$, $\langle L^2 \rangle$ for acentric reflections are 0.5, 0.333 respectively for untwinned datasets, and 0.375, 0.2 for perfectly twinned datasets.

Xtrriage's analysis on translational NCS is as follows: *The largest off-origin peak in the Patterson function is 5.66% of the height of the origin peak. No significant pseudotranslation is detected.*

5 Model quality i

5.1 Standard geometry i

Bond lengths and bond angles in the following residue types are not validated in this section: PO4, APB

The Z score for a bond length (or angle) is the number of standard deviations the observed value is removed from the expected value. A bond length (or angle) with $|Z| > 5$ is considered an outlier worth inspection. RMSZ is the root-mean-square of all Z scores of the bond lengths (or angles).

Mol	Chain	Bond lengths		Bond angles	
		RMSZ	# $ Z > 5$	RMSZ	# $ Z > 5$
1	A	0.76	0/2588	1.03	8/3517 (0.2%)
1	B	0.79	1/2604 (0.0%)	1.02	8/3541 (0.2%)
1	C	0.80	1/2587 (0.0%)	1.05	7/3517 (0.2%)
All	All	0.78	2/7779 (0.0%)	1.04	23/10575 (0.2%)

All (2) bond length outliers are listed below:

Mol	Chain	Res	Type	Atoms	Z	Observed(Å)	Ideal(Å)
1	B	258	VAL	CA-CB	5.94	1.57	1.54
1	C	258	VAL	CA-CB	5.33	1.57	1.54

The worst 5 of 23 bond angle outliers are listed below:

Mol	Chain	Res	Type	Atoms	Z	Observed(°)	Ideal(°)
1	C	249	PHE	N-CA-C	7.70	119.67	111.28
1	A	250	HIS	N-CA-C	7.67	120.61	111.33
1	A	249	PHE	N-CA-C	7.20	120.04	111.33
1	C	251	ALA	CA-C-N	7.08	127.00	119.85
1	C	251	ALA	C-N-CA	7.08	127.00	119.85

There are no chirality outliers.

There are no planarity outliers.

5.2 Too-close contacts i

In the following table, the Non-H and H(model) columns list the number of non-hydrogen atoms and hydrogen atoms in the chain respectively. The H(added) column lists the number of hydrogen atoms added and optimized by MolProbity. The Clashes column lists the number of clashes within the asymmetric unit, whereas Symm-Clashes lists symmetry-related clashes.

Mol	Chain	Non-H	H(model)	H(added)	Clashes	Symm-Clashes
1	A	2537	0	2541	93	0
1	B	2552	0	2548	95	0
1	C	2537	0	2535	63	0
2	A	10	0	8	4	0
2	B	10	0	8	4	0
2	C	10	0	8	4	0
3	A	10	0	0	1	0
3	B	10	0	0	1	0
3	C	10	0	0	2	0
4	A	131	0	0	3	0
4	B	128	0	0	4	0
4	C	141	0	0	2	0
All	All	8086	0	7648	245	0

The all-atom clashscore is defined as the number of clashes found per 1000 atoms (including hydrogen atoms). The all-atom clashscore for this structure is 16.

The worst 5 of 245 close contacts within the same asymmetric unit are listed below, sorted by their clash magnitude.

Atom-1	Atom-2	Interatomic distance (Å)	Clash overlap (Å)
1:A:245:LYS:O	1:A:245:LYS:CE	1.98	1.11
1:A:258:VAL:HA	1:A:262:TYR:HB2	1.08	1.08
1:B:245:LYS:HB2	1:B:354:MET:HE2	1.42	1.02
1:B:244:GLY:O	1:B:246:PRO:HD3	1.62	1.00
1:A:245:LYS:O	1:A:245:LYS:HE2	1.60	1.00

There are no symmetry-related clashes.

5.3 Torsion angles [i](#)

5.3.1 Protein backbone [i](#)

In the following table, the Percentiles column shows the percent Ramachandran outliers of the chain as a percentile score with respect to all X-ray entries followed by that with respect to entries of similar resolution.

The Analysed column shows the number of residues for which the backbone conformation was analysed, and the total number of residues.

Mol	Chain	Analysed	Favoured	Allowed	Outliers	Percentiles
1	A	325/335 (97%)	318 (98%)	7 (2%)	0	100 100

Continued on next page...

Continued from previous page...

Mol	Chain	Analysed	Favoured	Allowed	Outliers	Percentiles	
1	B	328/335 (98%)	314 (96%)	14 (4%)	0	100	100
1	C	324/335 (97%)	315 (97%)	8 (2%)	1 (0%)	36	42
All	All	977/1005 (97%)	947 (97%)	29 (3%)	1 (0%)	48	57

All (1) Ramachandran outliers are listed below:

Mol	Chain	Res	Type
1	C	132	GLN

5.3.2 Protein sidechains [i](#)

In the following table, the Percentiles column shows the percent sidechain outliers of the chain as a percentile score with respect to all X-ray entries followed by that with respect to entries of similar resolution.

The Analysed column shows the number of residues for which the sidechain conformation was analysed, and the total number of residues.

Mol	Chain	Analysed	Rotameric	Outliers	Percentiles	
1	A	268/276 (97%)	241 (90%)	27 (10%)	7	7
1	B	270/276 (98%)	248 (92%)	22 (8%)	11	12
1	C	269/276 (98%)	247 (92%)	22 (8%)	10	12
All	All	807/828 (98%)	736 (91%)	71 (9%)	9	10

5 of 71 residues with a non-rotameric sidechain are listed below:

Mol	Chain	Res	Type
1	C	165	SER
1	C	176	LEU
1	C	245	LYS
1	A	344	GLN
1	A	286	THR

Sometimes sidechains can be flipped to improve hydrogen bonding and reduce clashes. 5 of 31 such sidechains are listed below:

Mol	Chain	Res	Type
1	B	330	GLN
1	C	344	GLN
1	B	368	ASN

Continued on next page...

Continued from previous page...

Mol	Chain	Res	Type
1	C	361	GLN
1	C	250	HIS

5.3.3 RNA [i](#)

There are no RNA molecules in this entry.

5.4 Non-standard residues in protein, DNA, RNA chains [i](#)

There are no non-standard protein/DNA/RNA residues in this entry.

5.5 Carbohydrates [i](#)

There are no oligosaccharides in this entry.

5.6 Ligand geometry [i](#)

9 ligands are modelled in this entry.

In the following table, the Counts columns list the number of bonds (or angles) for which Mogul statistics could be retrieved, the number of bonds (or angles) that are observed in the model and the number of bonds (or angles) that are defined in the Chemical Component Dictionary. The Link column lists molecule types, if any, to which the group is linked. The Z score for a bond length (or angle) is the number of standard deviations the observed value is removed from the expected value. A bond length (or angle) with $|Z| > 2$ is considered an outlier worth inspection. RMSZ is the root-mean-square of all Z scores of the bond lengths (or angles).

Mol	Type	Chain	Res	Link	Bond lengths			Bond angles		
					Counts	RMSZ	# Z > 2	Counts	RMSZ	# Z > 2
2	APB	B	400	1	10,10,10	3.12	3 (30%)	13,13,13	1.91	6 (46%)
3	PO4	B	402	-	4,4,4	1.10	0	6,6,6	0.48	0
3	PO4	C	401	-	4,4,4	0.99	0	6,6,6	1.22	0
3	PO4	A	402	-	4,4,4	0.86	0	6,6,6	1.06	0
3	PO4	C	402	-	4,4,4	0.61	0	6,6,6	0.83	0
3	PO4	B	401	-	4,4,4	0.80	0	6,6,6	1.17	0
2	APB	A	400	1	10,10,10	3.13	3 (30%)	13,13,13	1.86	3 (23%)
2	APB	C	400	1	10,10,10	3.22	3 (30%)	13,13,13	1.78	3 (23%)
3	PO4	A	401	-	4,4,4	0.68	0	6,6,6	0.63	0

In the following table, the Chirals column lists the number of chiral outliers, the number of chiral

centers analysed, the number of these observed in the model and the number defined in the Chemical Component Dictionary. Similar counts are reported in the Torsion and Rings columns. '-' means no outliers of that kind were identified.

Mol	Type	Chain	Res	Link	Chirals	Torsions	Rings
2	APB	B	400	1	-	2/4/4/4	0/1/1/1
2	APB	A	400	1	-	2/4/4/4	0/1/1/1
2	APB	C	400	1	-	2/4/4/4	0/1/1/1

The worst 5 of 9 bond length outliers are listed below:

Mol	Chain	Res	Type	Atoms	Z	Observed(Å)	Ideal(Å)
2	C	400	APB	B-C1	-6.80	1.43	1.57
2	B	400	APB	B-C1	-6.59	1.44	1.57
2	A	400	APB	B-C1	-6.54	1.44	1.57
2	B	400	APB	B-O1	6.52	1.47	1.36
2	C	400	APB	B-O1	6.50	1.47	1.36

The worst 5 of 12 bond angle outliers are listed below:

Mol	Chain	Res	Type	Atoms	Z	Observed(°)	Ideal(°)
2	B	400	APB	O2-B-O1	-3.43	108.34	119.65
2	A	400	APB	O2-B-O1	-3.32	108.69	119.65
2	B	400	APB	O1-B-C1	-3.30	110.02	119.96
2	C	400	APB	O2-B-C1	-3.17	110.39	119.96
2	C	400	APB	O1-B-C1	-3.14	110.50	119.96

There are no chirality outliers.

5 of 6 torsion outliers are listed below:

Mol	Chain	Res	Type	Atoms
2	A	400	APB	O2-B-C1-C2
2	A	400	APB	O2-B-C1-C6
2	B	400	APB	O2-B-C1-C2
2	B	400	APB	O2-B-C1-C6
2	C	400	APB	O2-B-C1-C2

There are no ring outliers.

6 monomers are involved in 16 short contacts:

Mol	Chain	Res	Type	Clashes	Symm-Clashes
2	B	400	APB	4	0
3	C	401	PO4	2	0

Continued on next page...

Continued from previous page...

Mol	Chain	Res	Type	Clashes	Symm-Clashes
3	B	401	PO4	1	0
2	A	400	APB	4	0
2	C	400	APB	4	0
3	A	401	PO4	1	0

5.7 Other polymers [i](#)

There are no such residues in this entry.

5.8 Polymer linkage issues [i](#)

There are no chain breaks in this entry.

6 Fit of model and data [i](#)

6.1 Protein, DNA and RNA chains [i](#)

In the following table, the column labelled ‘#RSRZ> 2’ contains the number (and percentage) of RSRZ outliers, followed by percent RSRZ outliers for the chain as percentile scores relative to all X-ray entries and entries of similar resolution. The OWAB column contains the minimum, median, 95th percentile and maximum values of the occupancy-weighted average B-factor per residue. The column labelled ‘Q< 0.9’ lists the number of (and percentage) of residues with an average occupancy less than 0.9.

Mol	Chain	Analysed	<RSRZ>	#RSRZ>2	OWAB(Å ²)	Q<0.9
1	A	329/335 (98%)	-1.22	0 100 100	7, 21, 69, 79	0
1	B	332/335 (99%)	-1.25	0 100 100	6, 21, 68, 89	0
1	C	330/335 (98%)	-1.24	0 100 100	6, 21, 72, 94	0
All	All	991/1005 (98%)	-1.24	0 100 100	6, 21, 69, 94	0

There are no RSRZ outliers to report.

6.2 Non-standard residues in protein, DNA, RNA chains [i](#)

There are no non-standard protein/DNA/RNA residues in this entry.

6.3 Carbohydrates [i](#)

There are no oligosaccharides in this entry.

6.4 Ligands [i](#)

In the following table, the Atoms column lists the number of modelled atoms in the group and the number defined in the chemical component dictionary. The B-factors column lists the minimum, median, 95th percentile and maximum values of B factors of atoms in the group. The column labelled ‘Q< 0.9’ lists the number of atoms with occupancy less than 0.9.

Mol	Type	Chain	Res	Atoms	RSCC	RSR	B-factors(Å ²)	Q<0.9
2	APB	A	400	10/10	0.98	0.06	18,21,24,29	10
3	PO4	B	402	5/5	0.98	0.06	33,37,37,38	5
3	PO4	C	402	5/5	0.98	0.05	30,33,37,37	5
3	PO4	A	402	5/5	0.99	0.05	26,31,33,34	5
3	PO4	B	401	5/5	0.99	0.06	26,28,29,36	5

Continued on next page...

Continued from previous page...

Mol	Type	Chain	Res	Atoms	RSCC	RSR	B-factors(\AA^2)	Q<0.9
2	APB	B	400	10/10	0.99	0.04	18,21,24,30	10
3	PO4	C	401	5/5	0.99	0.08	25,26,27,35	5
2	APB	C	400	10/10	0.99	0.04	22,24,26,34	10
3	PO4	A	401	5/5	1.00	0.07	26,27,28,34	5

6.5 Other polymers [i](#)

There are no such residues in this entry.