



Full wwPDB X-ray Structure Validation Report ⓘ

Mar 6, 2026 – 08:57 PM UTC

PDB ID : 2DVX / pdb_00002dvx
Title : Crystal Structure of 2,6-Dihydroxybenzoate Decarboxylase Complexed with inhibitor 2,3-dihydroxybenzaldehyde
Authors : Goto, M.
Deposited on : 2006-08-01
Resolution : 1.70 Å(reported)

This is a Full wwPDB X-ray Structure Validation Report for a publicly released PDB entry.

We welcome your comments at validation@mail.wwpdb.org

A user guide is available at

<https://www.wwpdb.org/validation/2017/XrayValidationReportHelp>

with specific help available everywhere you see the ⓘ symbol.

The types of validation reports are described at

<http://www.wwpdb.org/validation/2017/FAQs#types>.

The following versions of software and data (see [references ⓘ](#)) were used in the production of this report:

MolProbity : 4-5-2 with Phenix2.0
Mogul : 2022.3.0, CSD as543be (2022)
Xtriage (Phenix) : 2.0
EDS : 3.0
Percentile statistics : 20250101.v01 (using entries in the PDB archive January 1st 2025)
CCP4 : 9.0.010 (Gargrove)
Density-Fitness : 1.0.12
Ideal geometry (proteins) : Engh & Huber (2001)
Ideal geometry (DNA, RNA) : Parkinson et al. (1996)
Validation Pipeline (wwPDB-VP) : 2.49

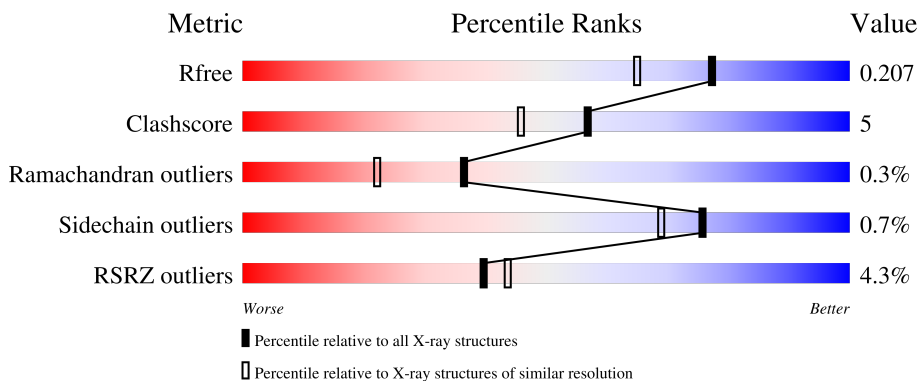
1 Overall quality at a glance i

The following experimental techniques were used to determine the structure:

X-RAY DIFFRACTION

The reported resolution of this entry is 1.70 Å.

Percentile scores (ranging between 0-100) for global validation metrics of the entry are shown in the following graphic. The table shows the number of entries on which the scores are based.



Metric	Whole archive (#Entries)	Similar resolution (#Entries, resolution range(Å))
R_{free}	180053	5551 (1.70-1.70)
Clashscore	190562	5924 (1.70-1.70)
Ramachandran outliers	187476	5846 (1.70-1.70)
Sidechain outliers	187428	5846 (1.70-1.70)
RSRZ outliers	180081	5554 (1.70-1.70)

The table below summarises the geometric issues observed across the polymeric chains and their fit to the electron density. The red, orange, yellow and green segments of the lower bar indicate the fraction of residues that contain outliers for ≥ 3 , 2, 1 and 0 types of geometric quality criteria respectively. A grey segment represents the fraction of residues that are not modelled. The numeric value for each fraction is indicated below the corresponding segment, with a dot representing fractions $\leq 5\%$. The upper red bar (where present) indicates the fraction of residues that have poor fit to the electron density. The numeric value is given above the bar.

Mol	Chain	Length	Quality of chain
1	A	327	<div style="display: flex; align-items: center;"> <div style="width: 2%; height: 10px; background-color: red; margin-right: 2px;"></div> <div style="width: 86%; height: 10px; background-color: green; margin-right: 2px;"></div> <div style="width: 13%; height: 10px; background-color: yellow; margin-right: 2px;"></div> <div style="width: 1%; height: 10px; background-color: grey; margin-right: 2px;"></div> </div> <p style="margin-left: 20px;">2% 86% 13% ..</p>
1	B	327	<div style="display: flex; align-items: center;"> <div style="width: 3%; height: 10px; background-color: red; margin-right: 2px;"></div> <div style="width: 85%; height: 10px; background-color: green; margin-right: 2px;"></div> <div style="width: 13%; height: 10px; background-color: yellow; margin-right: 2px;"></div> <div style="width: 1%; height: 10px; background-color: grey; margin-right: 2px;"></div> </div> <p style="margin-left: 20px;">3% 85% 13% ..</p>
1	C	327	<div style="display: flex; align-items: center;"> <div style="width: 6%; height: 10px; background-color: red; margin-right: 2px;"></div> <div style="width: 85%; height: 10px; background-color: green; margin-right: 2px;"></div> <div style="width: 13%; height: 10px; background-color: yellow; margin-right: 2px;"></div> <div style="width: 1%; height: 10px; background-color: grey; margin-right: 2px;"></div> </div> <p style="margin-left: 20px;">6% 85% 13% ..</p>
1	D	327	<div style="display: flex; align-items: center;"> <div style="width: 5%; height: 10px; background-color: red; margin-right: 2px;"></div> <div style="width: 86%; height: 10px; background-color: green; margin-right: 2px;"></div> <div style="width: 12%; height: 10px; background-color: yellow; margin-right: 2px;"></div> <div style="width: 1%; height: 10px; background-color: grey; margin-right: 2px;"></div> </div> <p style="margin-left: 20px;">5% 86% 12% ..</p>

2 Entry composition

There are 4 unique types of molecules in this entry. The entry contains 11585 atoms, of which 0 are hydrogens and 0 are deuteriums.

In the tables below, the ZeroOcc column contains the number of atoms modelled with zero occupancy, the AltConf column contains the number of residues with at least one atom in alternate conformation and the Trace column contains the number of residues modelled with at most 2 atoms.

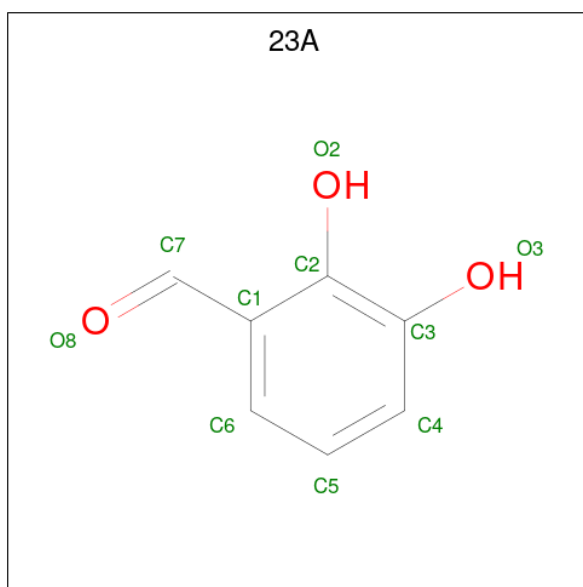
- Molecule 1 is a protein called Thermophilic reversible gamma-resorcylate decarboxylase.

Mol	Chain	Residues	Atoms					ZeroOcc	AltConf	Trace
			Total	C	N	O	S			
1	A	325	Total 2626	C 1679	N 462	O 475	S 10	0	0	0
1	B	324	Total 2604	C 1667	N 457	O 470	S 10	0	0	0
1	C	323	Total 2608	C 1667	N 458	O 473	S 10	0	0	0
1	D	321	Total 2601	C 1663	N 461	O 467	S 10	0	0	0

- Molecule 2 is ZINC ION (CCD ID: ZN) (formula: Zn).

Mol	Chain	Residues	Atoms		ZeroOcc	AltConf
2	A	1	Total 1	Zn 1	0	0
2	B	1	Total 1	Zn 1	0	0
2	C	1	Total 1	Zn 1	0	0
2	D	1	Total 1	Zn 1	0	0

- Molecule 3 is 2,3-DIHYDROXYBENZALDEHYDE (CCD ID: 23A) (formula: C₇H₆O₃).



Mol	Chain	Residues	Atoms	ZeroOcc	AltConf
3	A	1	Total C O 10 7 3	0	0
3	B	1	Total C O 10 7 3	0	0
3	C	1	Total C O 10 7 3	0	0
3	D	1	Total C O 10 7 3	0	0


- Molecule 4 is water.

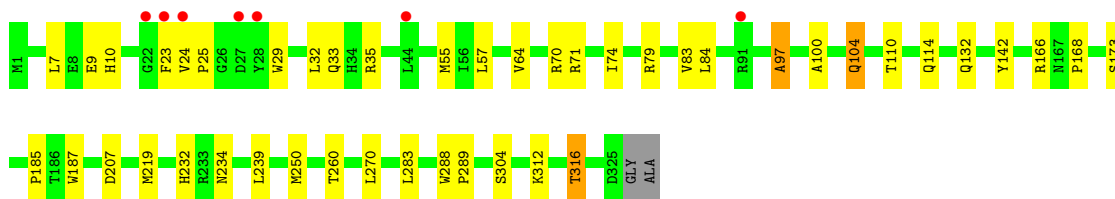
Mol	Chain	Residues	Atoms	ZeroOcc	AltConf
4	A	294	Total O 294 294	0	0
4	B	304	Total O 304 304	0	0
4	C	268	Total O 268 268	0	0
4	D	236	Total O 236 236	0	0

3 Residue-property plots


These plots are drawn for all protein, RNA, DNA and oligosaccharide chains in the entry. The first graphic for a chain summarises the proportions of the various outlier classes displayed in the second graphic. The second graphic shows the sequence view annotated by issues in geometry and electron density. Residues are color-coded according to the number of geometric quality criteria for which they contain at least one outlier: green = 0, yellow = 1, orange = 2 and red = 3 or more. A red dot above a residue indicates a poor fit to the electron density ($RSRZ > 2$). Stretches of 2 or more consecutive residues without any outlier are shown as a green connector. Residues present in the sample, but not in the model, are shown in grey.

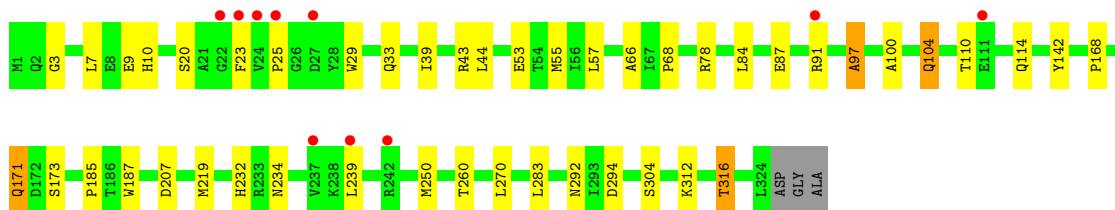
- Molecule 1: Thermophilic reversible gamma-resorcyate decarboxylase

Chain A: 




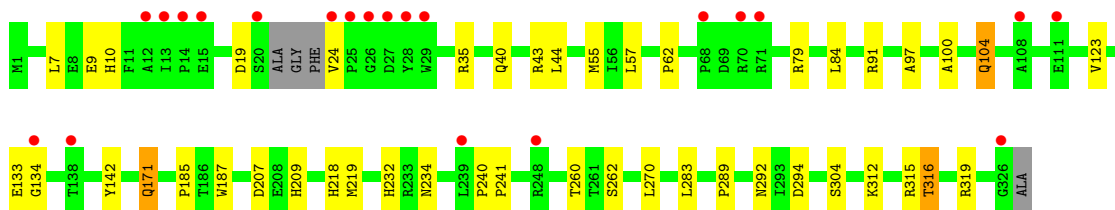
- Molecule 1: Thermophilic reversible gamma-resorcyate decarboxylase

Chain B: 




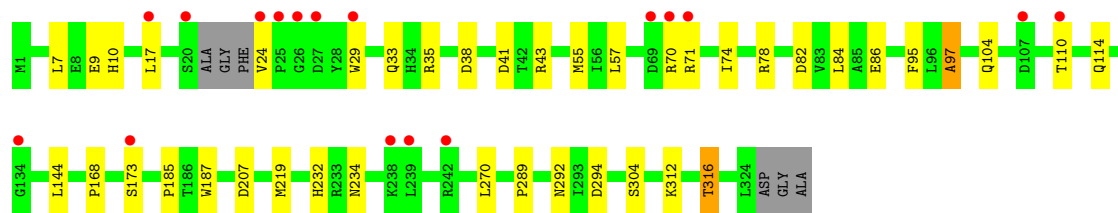
- Molecule 1: Thermophilic reversible gamma-resorcyate decarboxylase

Chain C: 



- Molecule 1: Thermophilic reversible gamma-resorcyate decarboxylase

Chain D: 



4 Data and refinement statistics

Property	Value	Source
Space group	P 21 21 21	Depositor
Cell constants a, b, c, α , β , γ	109.02Å 113.55Å 119.32Å 90.00° 90.00° 90.00°	Depositor
Resolution (Å)	40.24 – 1.70 40.24 – 1.70	Depositor EDS
% Data completeness (in resolution range)	99.6 (40.24-1.70) 99.7 (40.24-1.70)	Depositor EDS
R_{merge}	(Not available)	Depositor
R_{sym}	(Not available)	Depositor
$\langle I/\sigma(I) \rangle$ ¹	5.61 (at 1.70Å)	Xtrriage
Refinement program	CNS 1.1	Depositor
R, R_{free}	0.184 , 0.208 0.184 , 0.207	Depositor DCC
R_{free} test set	16107 reflections (9.95%)	wwPDB-VP
Wilson B-factor (Å ²)	19.8	Xtrriage
Anisotropy	0.049	Xtrriage
Bulk solvent k_{sol} (e/Å ³), B_{sol} (Å ²)	0.37 , 41.6	EDS
L-test for twinning ²	$\langle L \rangle = 0.50$, $\langle L^2 \rangle = 0.34$	Xtrriage
Estimated twinning fraction	0.006 for k,h,-l	Xtrriage
F_o, F_c correlation	0.96	EDS
Total number of atoms	11585	wwPDB-VP
Average B, all atoms (Å ²)	22.0	wwPDB-VP

Xtrriage's analysis on translational NCS is as follows: *The largest off-origin peak in the Patterson function is 3.02% of the height of the origin peak. No significant pseudotranslation is detected.*

¹Intensities estimated from amplitudes.

²Theoretical values of $\langle |L| \rangle$, $\langle L^2 \rangle$ for acentric reflections are 0.5, 0.333 respectively for untwinned datasets, and 0.375, 0.2 for perfectly twinned datasets.

5 Model quality [i](#)

5.1 Standard geometry [i](#)

Bond lengths and bond angles in the following residue types are not validated in this section: 23A, ZN

The Z score for a bond length (or angle) is the number of standard deviations the observed value is removed from the expected value. A bond length (or angle) with $|Z| > 5$ is considered an outlier worth inspection. RMSZ is the root-mean-square of all Z scores of the bond lengths (or angles).

Mol	Chain	Bond lengths		Bond angles	
		RMSZ	# Z >5	RMSZ	# Z >5
1	A	0.34	0/2701	0.91	11/3675 (0.3%)
1	B	0.34	0/2679	0.91	12/3648 (0.3%)
1	C	0.34	0/2681	0.93	13/3646 (0.4%)
1	D	0.33	0/2674	0.91	8/3636 (0.2%)
All	All	0.34	0/10735	0.92	44/14605 (0.3%)

There are no bond length outliers.

All (44) bond angle outliers are listed below:

Mol	Chain	Res	Type	Atoms	Z	Observed(°)	Ideal(°)
1	A	207	ASP	N-CA-C	-6.83	103.28	111.69
1	B	232	HIS	N-CA-C	6.72	121.49	113.16
1	C	232	HIS	N-CA-C	6.68	121.44	113.16
1	D	7	LEU	N-CA-C	6.67	121.36	112.30
1	A	7	LEU	N-CA-C	6.49	121.13	112.30
1	B	207	ASP	N-CA-C	-6.44	103.77	111.69
1	B	316	THR	N-CA-C	6.43	119.28	111.82
1	C	10	HIS	N-CA-C	6.43	120.39	110.42
1	C	7	LEU	N-CA-C	6.41	121.01	112.30
1	A	97	ALA	N-CA-C	6.39	119.14	109.23
1	B	7	LEU	N-CA-C	6.39	120.99	112.30
1	B	304	SER	N-CA-C	6.37	119.52	109.39
1	D	207	ASP	N-CA-C	-6.35	103.88	111.69
1	C	304	SER	N-CA-C	6.34	119.47	109.39
1	B	10	HIS	N-CA-C	6.31	120.20	110.42
1	C	207	ASP	N-CA-C	-6.29	103.71	112.45
1	D	10	HIS	N-CA-C	6.26	120.12	110.42
1	D	316	THR	N-CA-C	6.25	118.90	111.71
1	D	232	HIS	N-CA-C	6.23	120.89	113.16
1	A	232	HIS	N-CA-C	6.16	120.80	113.16

Continued on next page...

Continued from previous page...

Mol	Chain	Res	Type	Atoms	Z	Observed(°)	Ideal(°)
1	A	316	THR	N-CA-C	6.11	118.91	111.82
1	B	97	ALA	N-CA-C	6.07	118.64	109.23
1	D	304	SER	N-CA-C	6.03	118.98	109.39
1	C	316	THR	N-CA-C	6.03	118.81	111.82
1	A	304	SER	N-CA-C	5.93	118.82	109.39
1	C	97	ALA	N-CA-C	5.91	118.39	109.23
1	D	97	ALA	N-CA-C	5.76	118.15	109.23
1	B	104	GLN	N-CA-C	-5.70	106.28	113.18
1	A	100	ALA	N-CA-C	-5.54	100.67	109.76
1	A	10	HIS	N-CA-C	5.47	118.90	110.42
1	D	95	PHE	N-CA-C	5.41	117.72	108.90
1	C	209	HIS	CA-C-N	5.41	125.02	119.56
1	C	209	HIS	C-N-CA	5.41	125.02	119.56
1	A	104	GLN	N-CA-C	-5.33	106.74	113.20
1	C	100	ALA	N-CA-C	-5.33	101.02	109.76
1	C	142	TYR	N-CA-C	5.31	119.47	113.15
1	C	104	GLN	N-CA-C	-5.23	106.96	113.19
1	B	100	ALA	N-CA-C	-5.21	101.21	109.76
1	B	91	ARG	CA-C-N	5.18	124.84	119.56
1	B	91	ARG	C-N-CA	5.18	124.84	119.56
1	A	64	VAL	N-CA-C	5.09	116.43	110.62
1	B	142	TYR	N-CA-C	5.07	119.18	113.15
1	A	142	TYR	N-CA-C	5.03	119.14	113.15
1	C	123	VAL	N-CA-C	5.03	116.95	112.17

There are no chirality outliers.

There are no planarity outliers.

5.2 Too-close contacts [i](#)

In the following table, the Non-H and H(model) columns list the number of non-hydrogen atoms and hydrogen atoms in the chain respectively. The H(added) column lists the number of hydrogen atoms added and optimized by MolProbity. The Clashes column lists the number of clashes within the asymmetric unit, whereas Symm-Clashes lists symmetry-related clashes.

Mol	Chain	Non-H	H(model)	H(added)	Clashes	Symm-Clashes
1	A	2626	0	2539	23	0
1	B	2604	0	2509	30	0
1	C	2608	0	2524	26	0
1	D	2601	0	2526	21	0
2	A	1	0	0	0	0

Continued on next page...

Continued from previous page...

Mol	Chain	Non-H	H(model)	H(added)	Clashes	Symm-Clashes
2	B	1	0	0	0	0
2	C	1	0	0	0	0
2	D	1	0	0	0	0
3	A	10	0	4	1	0
3	B	10	0	4	1	0
3	C	10	0	4	0	0
3	D	10	0	5	0	0
4	A	294	0	0	1	0
4	B	304	0	0	2	0
4	C	268	0	0	0	0
4	D	236	0	0	1	0
All	All	11585	0	10115	94	0

The all-atom clashscore is defined as the number of clashes found per 1000 atoms (including hydrogen atoms). The all-atom clashscore for this structure is 5.

All (94) close contacts within the same asymmetric unit are listed below, sorted by their clash magnitude.

Atom-1	Atom-2	Interatomic distance (Å)	Clash overlap (Å)
1:B:171:GLN:HE21	1:B:171:GLN:H	1.03	0.98
1:C:171:GLN:HE21	1:C:171:GLN:H	1.00	0.97
1:B:78:ARG:HH11	1:B:78:ARG:HB3	1.31	0.95
1:C:171:GLN:H	1:C:171:GLN:NE2	1.77	0.81
1:C:171:GLN:HE21	1:C:171:GLN:N	1.80	0.79
1:B:78:ARG:HB3	1:B:78:ARG:NH1	2.00	0.76
1:A:9:GLU:HG3	1:A:55:MET:HG3	1.71	0.73
1:B:171:GLN:H	1:B:171:GLN:NE2	1.83	0.69
1:B:9:GLU:HG3	1:B:55:MET:HG3	1.75	0.69
1:D:9:GLU:HG3	1:D:55:MET:HG3	1.76	0.68
1:C:9:GLU:HG3	1:C:55:MET:HG3	1.77	0.67
1:B:23:PHE:CG	3:B:1512:23A:H4	2.31	0.65
1:D:168:PRO:HG2	1:D:173:SER:OG	2.00	0.61
1:A:23:PHE:CG	3:A:1511:23A:H4	2.37	0.60
1:A:79:ARG:HG3	1:A:79:ARG:HH11	1.66	0.60
1:C:234:ASN:HD21	1:D:185:PRO:HG3	1.69	0.58
1:A:234:ASN:HD21	1:B:185:PRO:HG3	1.69	0.58
1:A:132:GLN:NE2	1:A:166:ARG:HH22	2.02	0.57
1:B:44:LEU:HD13	1:B:44:LEU:O	2.04	0.57
1:B:171:GLN:HE21	1:B:171:GLN:N	1.87	0.56
1:C:315:ARG:O	1:C:319:ARG:HG2	2.05	0.56
1:A:25:PRO:HG2	1:B:239:LEU:HD12	1.89	0.55

Continued on next page...

Continued from previous page...

Atom-1	Atom-2	Interatomic distance (Å)	Clash overlap (Å)
1:D:312:LYS:HA	1:D:316:THR:OG1	2.05	0.55
1:C:91:ARG:HH11	1:C:91:ARG:HG3	1.71	0.55
1:B:78:ARG:HH11	1:B:78:ARG:CB	2.12	0.54
1:A:250:MET:HE3	4:A:1769:HOH:O	2.08	0.54
1:C:19:ASP:HB3	1:C:62:PRO:HD2	1.90	0.53
1:C:40:GLN:OE1	1:C:91:ARG:NH1	2.42	0.53
1:D:17:LEU:HD23	1:D:17:LEU:O	2.09	0.53
1:A:168:PRO:HG2	1:A:173:SER:OG	2.09	0.52
1:B:312:LYS:HA	1:B:316:THR:OG1	2.09	0.52
1:D:29:TRP:O	1:D:33:GLN:HG3	2.08	0.52
1:B:250:MET:HE3	4:B:1562:HOH:O	2.10	0.52
1:C:185:PRO:HG3	1:D:234:ASN:HD21	1.74	0.52
1:B:44:LEU:HD12	4:B:1809:HOH:O	2.09	0.52
1:B:66:ALA:O	1:B:68:PRO:HD3	2.12	0.50
1:D:17:LEU:HD21	1:D:33:GLN:HG2	1.93	0.50
1:D:71:ARG:C	1:D:71:ARG:HD3	2.38	0.49
1:A:24:VAL:HG11	1:A:32:LEU:HD22	1.95	0.48
1:A:312:LYS:HA	1:A:316:THR:OG1	2.13	0.48
1:C:133:GLU:CD	1:C:134:GLY:N	2.71	0.48
1:A:110:THR:O	1:A:114:GLN:HG3	2.13	0.48
1:A:57:LEU:HB2	1:A:84:LEU:HD11	1.96	0.47
1:B:43:ARG:HD3	1:B:55:MET:SD	2.53	0.47
1:C:79:ARG:C	1:C:79:ARG:HD3	2.39	0.47
1:D:82:ASP:O	1:D:86:GLU:HG3	2.14	0.47
1:B:84:LEU:CD2	1:B:97:ALA:HB1	2.45	0.47
1:D:110:THR:O	1:D:114:GLN:HG3	2.15	0.47
1:A:132:GLN:HE21	1:A:166:ARG:HH22	1.64	0.46
1:D:292:ASN:HB3	1:D:294:ASP:OD1	2.15	0.46
1:D:70:ARG:O	1:D:74:ILE:HG13	2.15	0.46
1:B:29:TRP:O	1:B:33:GLN:HG3	2.16	0.46
1:B:168:PRO:HG2	1:B:173:SER:OG	2.15	0.46
1:A:70:ARG:O	1:A:74:ILE:HG13	2.16	0.46
1:D:43:ARG:HD3	1:D:55:MET:SD	2.56	0.46
1:A:84:LEU:CD2	1:A:97:ALA:HB1	2.47	0.45
1:D:57:LEU:HB2	1:D:84:LEU:HD11	1.99	0.45
1:C:219:MET:HE2	1:C:270:LEU:HA	1.99	0.44
1:A:239:LEU:HD12	1:B:25:PRO:HG2	2.00	0.44
1:C:57:LEU:HB2	1:C:84:LEU:HD11	1.99	0.43
1:C:292:ASN:HB3	1:C:294:ASP:OD1	2.18	0.43
1:C:43:ARG:HD3	1:C:55:MET:SD	2.58	0.43
1:C:35:ARG:HB3	1:C:289:PRO:HB3	2.00	0.43

Continued on next page...

Continued from previous page...

Atom-1	Atom-2	Interatomic distance (Å)	Clash overlap (Å)
1:C:312:LYS:HA	1:C:316:THR:OG1	2.18	0.43
1:B:39:ILE:HD12	1:B:87:GLU:HG3	2.00	0.43
1:B:219:MET:HE2	1:B:270:LEU:HA	2.01	0.43
1:A:219:MET:HE2	1:A:270:LEU:HA	2.00	0.43
1:C:240:PRO:HA	1:C:241:PRO:HD3	1.89	0.43
1:C:24:VAL:HG23	1:C:24:VAL:O	2.19	0.42
1:C:79:ARG:HG2	1:C:79:ARG:HH11	1.84	0.42
1:D:219:MET:HE2	1:D:270:LEU:HA	2.00	0.42
1:B:110:THR:O	1:B:114:GLN:HG3	2.19	0.42
1:B:57:LEU:HB2	1:B:84:LEU:HD11	2.01	0.42
1:C:79:ARG:HD3	1:C:79:ARG:O	2.20	0.42
1:B:44:LEU:HD13	1:B:44:LEU:C	2.45	0.42
1:B:3:GLY:HA2	1:B:53:GLU:HB2	2.02	0.42
1:C:260:THR:HA	1:C:283:LEU:O	2.19	0.42
1:B:292:ASN:HB3	1:B:294:ASP:OD1	2.20	0.42
1:C:218:HIS:HA	1:C:262:SER:O	2.20	0.42
1:C:35:ARG:HB3	1:C:289:PRO:CB	2.50	0.41
1:D:24:VAL:O	1:D:24:VAL:HG23	2.20	0.41
1:A:79:ARG:NH1	1:A:83:VAL:HG21	2.36	0.41
1:D:84:LEU:CD2	1:D:97:ALA:HB1	2.50	0.41
1:A:260:THR:HA	1:A:283:LEU:O	2.20	0.41
1:B:260:THR:HA	1:B:283:LEU:O	2.20	0.41
1:A:185:PRO:HG3	1:B:234:ASN:HD21	1.86	0.41
1:D:38:ASP:OD2	1:D:41:ASP:HB3	2.19	0.41
1:A:35:ARG:HB3	1:A:289:PRO:HB3	2.03	0.41
1:D:35:ARG:HB3	1:D:289:PRO:HB3	2.02	0.41
1:A:288:TRP:CD2	1:A:289:PRO:HA	2.56	0.41
1:B:20:SER:HA	1:B:23:PHE:HD1	1.86	0.40
1:C:44:LEU:HD22	1:C:91:ARG:NE	2.36	0.40
1:D:144:LEU:HD11	4:D:1643:HOH:O	2.22	0.40
1:A:29:TRP:O	1:A:33:GLN:HG3	2.22	0.40

There are no symmetry-related clashes.

5.3 Torsion angles [i](#)

5.3.1 Protein backbone [i](#)

In the following table, the Percentiles column shows the percent Ramachandran outliers of the chain as a percentile score with respect to all X-ray entries followed by that with respect to entries of similar resolution.

The Analysed column shows the number of residues for which the backbone conformation was analysed, and the total number of residues.

Mol	Chain	Analysed	Favoured	Allowed	Outliers	Percentiles	
1	A	323/327 (99%)	314 (97%)	8 (2%)	1 (0%)	36	22
1	B	322/327 (98%)	311 (97%)	10 (3%)	1 (0%)	36	22
1	C	319/327 (98%)	309 (97%)	9 (3%)	1 (0%)	36	22
1	D	317/327 (97%)	306 (96%)	10 (3%)	1 (0%)	36	22
All	All	1281/1308 (98%)	1240 (97%)	37 (3%)	4 (0%)	36	22

All (4) Ramachandran outliers are listed below:

Mol	Chain	Res	Type
1	C	187	TRP
1	A	187	TRP
1	B	187	TRP
1	D	187	TRP

5.3.2 Protein sidechains [i](#)

In the following table, the Percentiles column shows the percent sidechain outliers of the chain as a percentile score with respect to all X-ray entries followed by that with respect to entries of similar resolution.

The Analysed column shows the number of residues for which the sidechain conformation was analysed, and the total number of residues.

Mol	Chain	Analysed	Rotameric	Outliers	Percentiles	
1	A	272/274 (99%)	270 (99%)	2 (1%)	76	69
1	B	268/274 (98%)	266 (99%)	2 (1%)	76	69
1	C	271/274 (99%)	269 (99%)	2 (1%)	76	69
1	D	270/274 (98%)	268 (99%)	2 (1%)	76	69
All	All	1081/1096 (99%)	1073 (99%)	8 (1%)	76	69

All (8) residues with a non-rotameric sidechain are listed below:

Mol	Chain	Res	Type
1	A	71	ARG
1	A	104	GLN
1	B	104	GLN
1	B	171	GLN

Continued on next page...

Continued from previous page...

Mol	Chain	Res	Type
1	C	104	GLN
1	C	171	GLN
1	D	78	ARG
1	D	104	GLN

Sometimes sidechains can be flipped to improve hydrogen bonding and reduce clashes. All (17) such sidechains are listed below:

Mol	Chain	Res	Type
1	A	132	GLN
1	A	234	ASN
1	A	254	ASN
1	A	256	ASN
1	A	301	ASN
1	B	171	GLN
1	B	234	ASN
1	B	254	ASN
1	B	256	ASN
1	C	2	GLN
1	C	171	GLN
1	C	234	ASN
1	C	254	ASN
1	C	256	ASN
1	D	33	GLN
1	D	234	ASN
1	D	256	ASN

5.3.3 RNA [i](#)

There are no RNA molecules in this entry.

5.4 Non-standard residues in protein, DNA, RNA chains [i](#)

There are no non-standard protein/DNA/RNA residues in this entry.

5.5 Carbohydrates [i](#)

There are no oligosaccharides in this entry.

5.6 Ligand geometry

Of 8 ligands modelled in this entry, 4 are monoatomic - leaving 4 for Mogul analysis.

In the following table, the Counts columns list the number of bonds (or angles) for which Mogul statistics could be retrieved, the number of bonds (or angles) that are observed in the model and the number of bonds (or angles) that are defined in the Chemical Component Dictionary. The Link column lists molecule types, if any, to which the group is linked. The Z score for a bond length (or angle) is the number of standard deviations the observed value is removed from the expected value. A bond length (or angle) with $|Z| > 2$ is considered an outlier worth inspection. RMSZ is the root-mean-square of all Z scores of the bond lengths (or angles).

Mol	Type	Chain	Res	Link	Bond lengths			Bond angles		
					Counts	RMSZ	# Z > 2	Counts	RMSZ	# Z > 2
3	23A	A	1511	2	10,10,10	1.78	3 (30%)	13,13,13	1.11	1 (7%)
3	23A	D	1514	2	10,10,10	2.03	2 (20%)	13,13,13	0.83	0
3	23A	C	1513	2	10,10,10	1.98	2 (20%)	13,13,13	0.80	0
3	23A	B	1512	2	10,10,10	1.78	3 (30%)	13,13,13	1.11	1 (7%)

In the following table, the Chirals column lists the number of chiral outliers, the number of chiral centers analysed, the number of these observed in the model and the number defined in the Chemical Component Dictionary. Similar counts are reported in the Torsion and Rings columns. '-' means no outliers of that kind were identified.

Mol	Type	Chain	Res	Link	Chirals	Torsions	Rings
3	23A	A	1511	2	-	0/2/2/2	0/1/1/1
3	23A	D	1514	2	-	0/2/2/2	0/1/1/1
3	23A	C	1513	2	-	0/2/2/2	0/1/1/1
3	23A	B	1512	2	-	0/2/2/2	0/1/1/1

All (10) bond length outliers are listed below:

Mol	Chain	Res	Type	Atoms	Z	Observed(Å)	Ideal(Å)
3	D	1514	23A	C3-C2	3.97	1.44	1.40
3	C	1513	23A	C3-C2	3.80	1.44	1.40
3	A	1511	23A	C3-C2	3.25	1.43	1.40
3	C	1513	23A	C5-C6	3.24	1.44	1.38
3	D	1514	23A	C5-C6	3.17	1.44	1.38
3	B	1512	23A	C3-C2	3.07	1.43	1.40
3	B	1512	23A	C5-C6	2.60	1.43	1.38
3	B	1512	23A	C1-C7	-2.54	1.41	1.47
3	A	1511	23A	C5-C6	2.52	1.43	1.38
3	A	1511	23A	C1-C7	-2.51	1.41	1.47

All (2) bond angle outliers are listed below:

Mol	Chain	Res	Type	Atoms	Z	Observed(°)	Ideal(°)
3	A	1511	23A	O8-C7-C1	-2.21	118.84	124.41
3	B	1512	23A	O8-C7-C1	-2.11	119.11	124.41

There are no chirality outliers.

There are no torsion outliers.

There are no ring outliers.

2 monomers are involved in 2 short contacts:

Mol	Chain	Res	Type	Clashes	Symm-Clashes
3	A	1511	23A	1	0
3	B	1512	23A	1	0

5.7 Other polymers [i](#)

There are no such residues in this entry.

5.8 Polymer linkage issues [i](#)

There are no chain breaks in this entry.

6 Fit of model and data

6.1 Protein, DNA and RNA chains

In the following table, the column labelled ‘#RSRZ > 2’ contains the number (and percentage) of RSRZ outliers, followed by percent RSRZ outliers for the chain as percentile scores relative to all X-ray entries and entries of similar resolution. The OWAB column contains the minimum, median, 95th percentile and maximum values of the occupancy-weighted average B-factor per residue. The column labelled ‘Q < 0.9’ lists the number of (and percentage) of residues with an average occupancy less than 0.9.

Mol	Chain	Analysed	<RSRZ>	#RSRZ>2	OWAB(Å ²)	Q<0.9
1	A	325/327 (99%)	0.07	7 (2%) 62 66	11, 19, 32, 50	0
1	B	324/327 (99%)	0.01	10 (3%) 51 55	12, 19, 31, 46	0
1	C	323/327 (98%)	0.42	21 (6%) 25 27	12, 21, 35, 49	0
1	D	321/327 (98%)	0.43	17 (5%) 32 35	12, 22, 36, 47	0
All	All	1293/1308 (98%)	0.23	55 (4%) 40 44	11, 20, 35, 50	0

All (55) RSRZ outliers are listed below:

Mol	Chain	Res	Type	RSRZ
1	A	23	PHE	7.4
1	C	24	VAL	6.4
1	C	326	GLY	6.0
1	C	25	PRO	5.1
1	D	17	LEU	4.8
1	C	26	GLY	4.7
1	B	23	PHE	4.6
1	D	25	PRO	4.5
1	A	24	VAL	4.1
1	D	24	VAL	3.8
1	C	29	TRP	3.8
1	D	242	ARG	3.8
1	A	27	ASP	3.6
1	A	22	GLY	3.6
1	D	27	ASP	3.3
1	D	71	ARG	3.3
1	D	70	ARG	3.1
1	B	27	ASP	3.1
1	C	239	LEU	3.0
1	B	22	GLY	2.9
1	A	44	LEU	2.9

Continued on next page...

Continued from previous page...

Mol	Chain	Res	Type	RSRZ
1	B	91	ARG	2.8
1	D	26	GLY	2.8
1	B	25	PRO	2.7
1	C	138	THR	2.7
1	A	91	ARG	2.7
1	C	27	ASP	2.7
1	B	239	LEU	2.7
1	D	20	SER	2.6
1	B	24	VAL	2.5
1	C	111	GLU	2.5
1	C	71	ARG	2.4
1	D	134	GLY	2.4
1	D	239	LEU	2.4
1	A	28	TYR	2.4
1	C	12	ALA	2.4
1	C	134	GLY	2.3
1	D	173	SER	2.3
1	C	15	GLU	2.3
1	B	111	GLU	2.2
1	C	28	TYR	2.2
1	C	108	ALA	2.2
1	D	107	ASP	2.2
1	C	13	ILE	2.2
1	C	14	PRO	2.2
1	C	248	ARG	2.1
1	D	69	ASP	2.1
1	C	70	ARG	2.1
1	C	20	SER	2.1
1	B	242	ARG	2.1
1	D	29	TRP	2.1
1	D	238	LYS	2.1
1	B	237	VAL	2.0
1	D	110	THR	2.0
1	C	68	PRO	2.0

6.2 Non-standard residues in protein, DNA, RNA chains [\(i\)](#)

There are no non-standard protein/DNA/RNA residues in this entry.

6.3 Carbohydrates [i](#)

There are no oligosaccharides in this entry.

6.4 Ligands [i](#)

In the following table, the Atoms column lists the number of modelled atoms in the group and the number defined in the chemical component dictionary. The B-factors column lists the minimum, median, 95th percentile and maximum values of B factors of atoms in the group. The column labelled 'Q< 0.9' lists the number of atoms with occupancy less than 0.9.

Mol	Type	Chain	Res	Atoms	RSCC	RSR	B-factors(\AA^2)	Q<0.9
3	23A	A	1511	10/10	0.82	0.16	24,35,36,37	0
3	23A	B	1512	10/10	0.84	0.15	26,35,36,39	0
3	23A	C	1513	10/10	0.84	0.14	30,38,39,40	0
3	23A	D	1514	10/10	0.86	0.12	24,34,36,38	0
2	ZN	C	1503	1/1	0.99	0.10	25,25,25,25	0
2	ZN	D	1504	1/1	0.99	0.09	26,26,26,26	0
2	ZN	B	1502	1/1	0.99	0.09	22,22,22,22	0
2	ZN	A	1501	1/1	1.00	0.09	23,23,23,23	0

6.5 Other polymers [i](#)

There are no such residues in this entry.