



wwPDB X-ray Structure Validation Summary Report ⓘ

Mar 14, 2026 – 02:21 PM UTC

PDB ID : 2DB3 / pdb_00002db3
Title : Structural basis for RNA unwinding by the DEAD-box protein Drosophila Vasa
Authors : Sengoku, T.; Nureki, O.; Nakamura, A.; Kobayashi, S.; Yokoyama, S.; RIKEN Structural Genomics/Proteomics Initiative (RSGI)
Deposited on : 2005-12-14
Resolution : 2.20 Å(reported)

This is a wwPDB X-ray Structure Validation Summary Report for a publicly released PDB entry.

We welcome your comments at validation@mail.wwpdb.org

A user guide is available at

<https://www.wwpdb.org/validation/2017/XrayValidationReportHelp>

with specific help available everywhere you see the ⓘ symbol.

The types of validation reports are described at

<http://www.wwpdb.org/validation/2017/FAQs#types>.

The following versions of software and data (see [references ⓘ](#)) were used in the production of this report:

MolProbity : 4-5-2 with Phenix2.0
Mogul : 2022.3.0, CSD as543be (2022)
Xtrriage (Phenix) : 2.0
EDS : 3.0
Buster-report : wwPDB partial adaption of 1.1.7 (2018)
Percentile statistics : 20250101.v01 (using entries in the PDB archive January 1st 2025)
CCP4 : 9.0.010 (Gargrove)
Density-Fitness : 1.0.12
Ideal geometry (proteins) : Engh & Huber (2001)
Ideal geometry (DNA, RNA) : Parkinson et al. (1996)
Validation Pipeline (wwPDB-VP) : 2.49

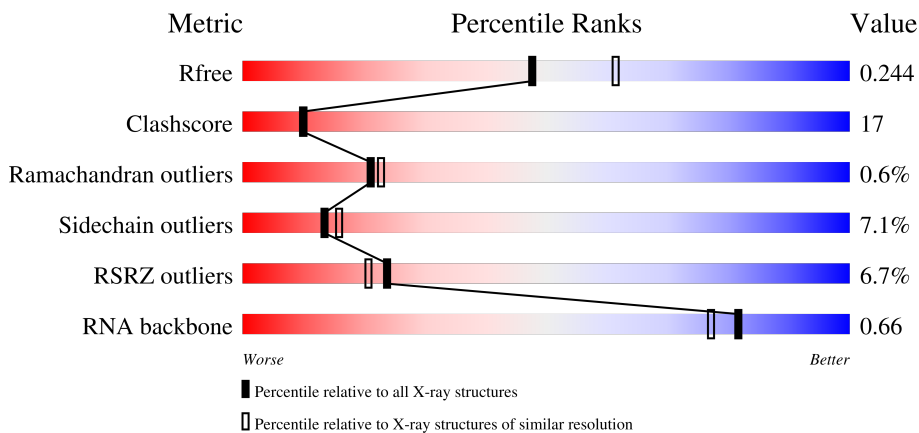
1 Overall quality at a glance

The following experimental techniques were used to determine the structure:

X-RAY DIFFRACTION

The reported resolution of this entry is 2.20 Å.

Percentile scores (ranging between 0-100) for global validation metrics of the entry are shown in the following graphic. The table shows the number of entries on which the scores are based.



Metric	Whole archive (#Entries)	Similar resolution (#Entries, resolution range(Å))
R_{free}	180053	6164 (2.20-2.20)
Clashscore	190562	6851 (2.20-2.20)
Ramachandran outliers	187476	6768 (2.20-2.20)
Sidechain outliers	187428	6769 (2.20-2.20)
RSRZ outliers	180081	6166 (2.20-2.20)
RNA backbone	3983	1052 (2.50-1.90)

The table below summarises the geometric issues observed across the polymeric chains and their fit to the electron density. The red, orange, yellow and green segments of the lower bar indicate the fraction of residues that contain outliers for ≥ 3 , 2, 1 and 0 types of geometric quality criteria respectively. A grey segment represents the fraction of residues that are not modelled. The numeric value for each fraction is indicated below the corresponding segment, with a dot representing fractions $\leq 5\%$. The upper red bar (where present) indicates the fraction of residues that have poor fit to the electron density. The numeric value is given above the bar.

Mol	Chain	Length	Quality of chain
1	E	10	 10% 60% 10% 30%
1	F	10	 10% 70% 30%
1	G	10	 40% 30% 30%

Continued on next page...

Continued from previous page...

Mol	Chain	Length	Quality of chain
1	H	10	
2	A	434	
2	B	434	
2	C	434	
2	D	434	

2 Entry composition

There are 5 unique types of molecules in this entry. The entry contains 15119 atoms, of which 0 are hydrogens and 0 are deuteriums.

In the tables below, the ZeroOcc column contains the number of atoms modelled with zero occupancy, the AltConf column contains the number of residues with at least one atom in alternate conformation and the Trace column contains the number of residues modelled with at most 2 atoms.

- Molecule 1 is a RNA chain called 5'-R(*UP*UP*UP*UP*UP*UP*UP*UP*U)-3'.

Mol	Chain	Residues	Atoms					ZeroOcc	AltConf	Trace
1	E	7	Total	C	N	O	P	0	0	1
			105	45	10	44	6			
1	F	7	Total	C	N	O	P	0	0	0
			129	59	12	52	6			
1	G	7	Total	C	N	O	P	0	0	0
			137	63	14	54	6			
1	H	6	Total	C	N	O	P	0	0	0
			117	54	12	46	5			

- Molecule 2 is a protein called ATP-dependent RNA helicase vasa.

Mol	Chain	Residues	Atoms					ZeroOcc	AltConf	Trace
2	A	420	Total	C	N	O	S	0	0	0
			3296	2089	573	619	15			
2	B	420	Total	C	N	O	S	0	0	0
			3296	2089	573	619	15			
2	C	420	Total	C	N	O	S	0	0	0
			3296	2089	573	619	15			
2	D	420	Total	C	N	O	S	0	0	0
			3296	2089	573	619	15			

There are 40 discrepancies between the modelled and reference sequences:

Chain	Residue	Modelled	Actual	Comment	Reference
A	190	GLY	-	cloning artifact	UNP P09052
A	191	PRO	-	cloning artifact	UNP P09052
A	192	LEU	-	cloning artifact	UNP P09052
A	193	GLY	-	cloning artifact	UNP P09052
A	194	SER	-	cloning artifact	UNP P09052
A	195	PRO	-	cloning artifact	UNP P09052
A	196	GLU	-	cloning artifact	UNP P09052
A	197	PHE	-	cloning artifact	UNP P09052

Continued on next page...

Continued from previous page...

Chain	Residue	Modelled	Actual	Comment	Reference
A	198	PRO	-	cloning artifact	UNP P09052
A	199	GLY	-	cloning artifact	UNP P09052
B	190	GLY	-	cloning artifact	UNP P09052
B	191	PRO	-	cloning artifact	UNP P09052
B	192	LEU	-	cloning artifact	UNP P09052
B	193	GLY	-	cloning artifact	UNP P09052
B	194	SER	-	cloning artifact	UNP P09052
B	195	PRO	-	cloning artifact	UNP P09052
B	196	GLU	-	cloning artifact	UNP P09052
B	197	PHE	-	cloning artifact	UNP P09052
B	198	PRO	-	cloning artifact	UNP P09052
B	199	GLY	-	cloning artifact	UNP P09052
C	190	GLY	-	cloning artifact	UNP P09052
C	191	PRO	-	cloning artifact	UNP P09052
C	192	LEU	-	cloning artifact	UNP P09052
C	193	GLY	-	cloning artifact	UNP P09052
C	194	SER	-	cloning artifact	UNP P09052
C	195	PRO	-	cloning artifact	UNP P09052
C	196	GLU	-	cloning artifact	UNP P09052
C	197	PHE	-	cloning artifact	UNP P09052
C	198	PRO	-	cloning artifact	UNP P09052
C	199	GLY	-	cloning artifact	UNP P09052
D	190	GLY	-	cloning artifact	UNP P09052
D	191	PRO	-	cloning artifact	UNP P09052
D	192	LEU	-	cloning artifact	UNP P09052
D	193	GLY	-	cloning artifact	UNP P09052
D	194	SER	-	cloning artifact	UNP P09052
D	195	PRO	-	cloning artifact	UNP P09052
D	196	GLU	-	cloning artifact	UNP P09052
D	197	PHE	-	cloning artifact	UNP P09052
D	198	PRO	-	cloning artifact	UNP P09052
D	199	GLY	-	cloning artifact	UNP P09052

- Molecule 3 is MAGNESIUM ION (CCD ID: MG) (formula: Mg).

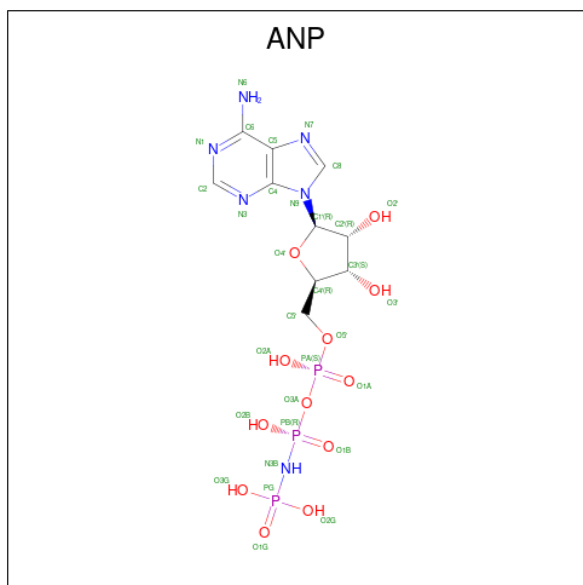
Mol	Chain	Residues	Atoms	ZeroOcc	AltConf
3	A	1	Total Mg 1 1	0	0
3	B	1	Total Mg 1 1	0	0
3	C	1	Total Mg 1 1	0	0

Continued on next page...

Continued from previous page...

Mol	Chain	Residues	Atoms		ZeroOcc	AltConf
3	D	1	Total	Mg	0	0
			1	1		

- Molecule 4 is PHOSPHOAMINOPHOSPHONIC ACID-ADENYLATE ESTER (CCD ID: ANP) (formula: C₁₀H₁₇N₆O₁₂P₃).



Mol	Chain	Residues	Atoms					ZeroOcc	AltConf
4	A	1	Total	C	N	O	P	0	0
			31	10	6	12	3		
4	B	1	Total	C	N	O	P	0	0
			31	10	6	12	3		
4	C	1	Total	C	N	O	P	0	0
			31	10	6	12	3		
4	D	1	Total	C	N	O	P	0	0
			31	10	6	12	3		

- Molecule 5 is water.

Mol	Chain	Residues	Atoms		ZeroOcc	AltConf
5	E	23	Total	O	0	0
			23	23		
5	F	22	Total	O	0	0
			22	22		
5	G	29	Total	O	0	0
			29	29		
5	H	22	Total	O	0	0
			22	22		

Continued on next page...

Continued from previous page...

Mol	Chain	Residues	Atoms		ZeroOcc	AltConf
5	A	233	Total 233	O 233	0	0
5	B	315	Total 315	O 315	0	0
5	C	393	Total 393	O 393	0	0
5	D	282	Total 282	O 282	0	0

3 Residue-property plots [i](#)

These plots are drawn for all protein, RNA, DNA and oligosaccharide chains in the entry. The first graphic for a chain summarises the proportions of the various outlier classes displayed in the second graphic. The second graphic shows the sequence view annotated by issues in geometry and electron density. Residues are color-coded according to the number of geometric quality criteria for which they contain at least one outlier: green = 0, yellow = 1, orange = 2 and red = 3 or more. A red dot above a residue indicates a poor fit to the electron density ($RSRZ > 2$). Stretches of 2 or more consecutive residues without any outlier are shown as a green connector. Residues present in the sample, but not in the model, are shown in grey.

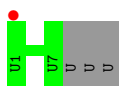
- Molecule 1: 5'-R(*UP*UP*UP*UP*UP*UP*UP*UP*U)-3'

Chain E: 



- Molecule 1: 5'-R(*UP*UP*UP*UP*UP*UP*UP*UP*U)-3'

Chain F: 



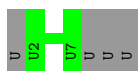
- Molecule 1: 5'-R(*UP*UP*UP*UP*UP*UP*UP*UP*U)-3'

Chain G: 



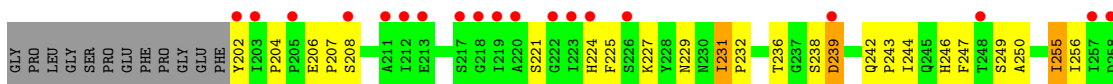
- Molecule 1: 5'-R(*UP*UP*UP*UP*UP*UP*UP*UP*U)-3'

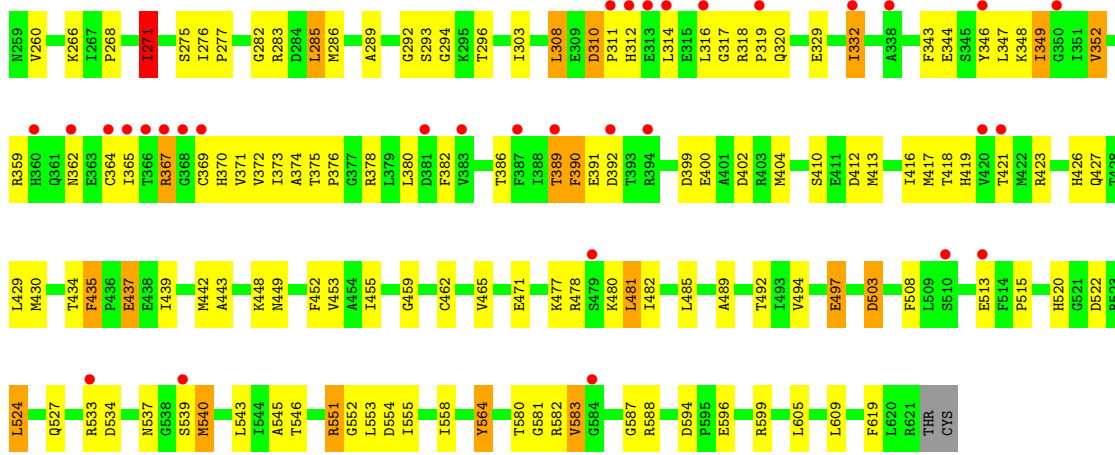
Chain H: 



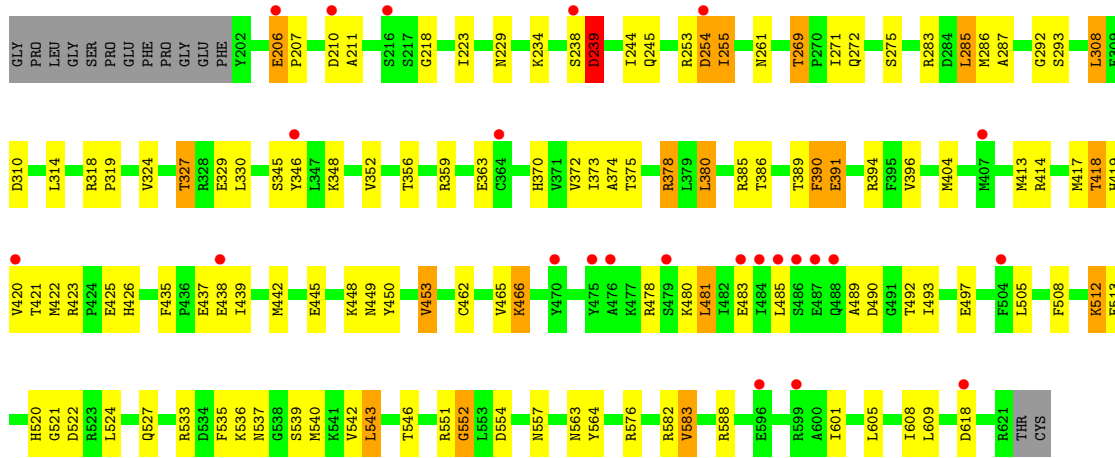
- Molecule 2: ATP-dependent RNA helicase vasa

Chain A: 

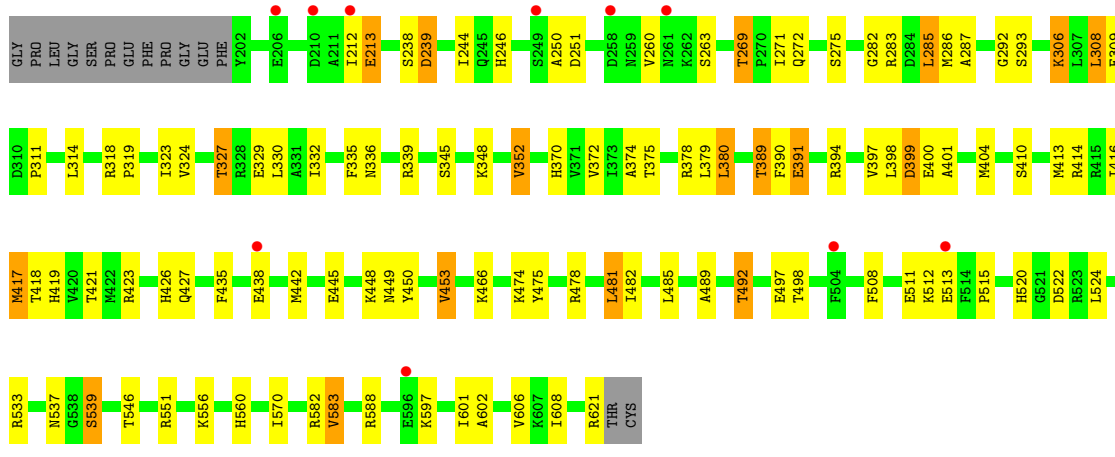
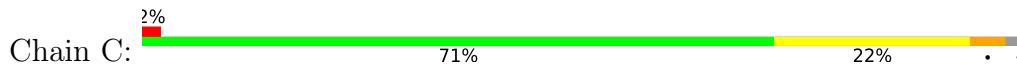




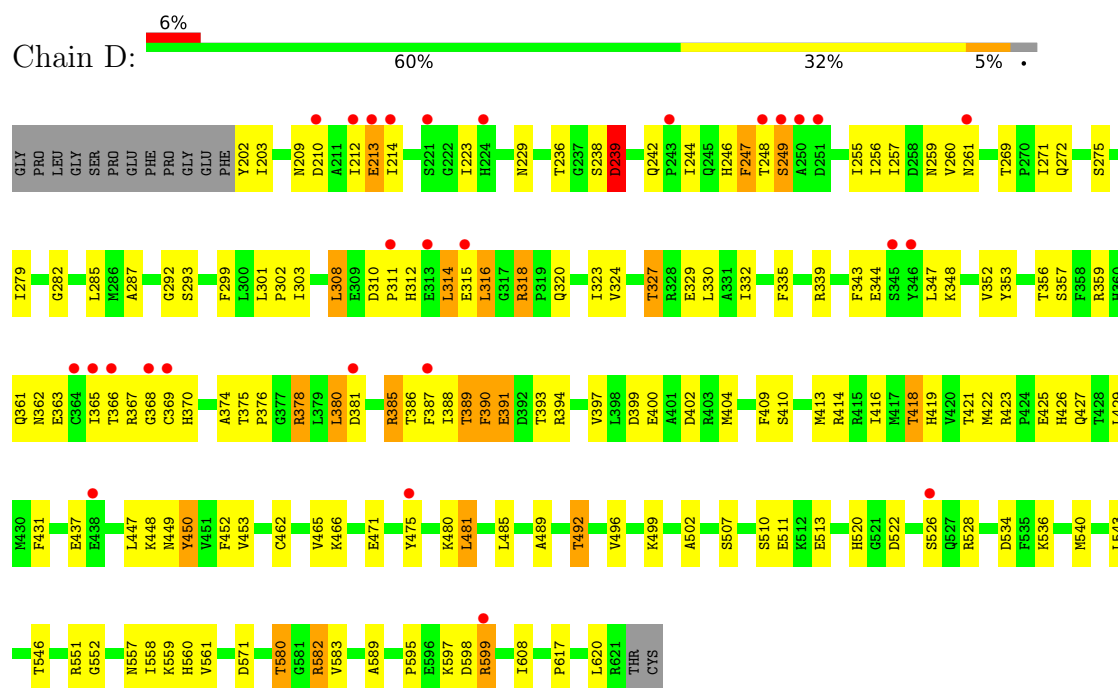
• Molecule 2: ATP-dependent RNA helicase vasa



• Molecule 2: ATP-dependent RNA helicase vasa



• Molecule 2: ATP-dependent RNA helicase vasa



4 Data and refinement statistics i

Property	Value	Source
Space group	P 1 21 1	Depositor
Cell constants a, b, c, α , β , γ	71.05Å 142.33Å 130.47Å 90.00° 90.86° 90.00°	Depositor
Resolution (Å)	39.46 – 2.20 39.46 – 2.20	Depositor EDS
% Data completeness (in resolution range)	89.4 (39.46-2.20) 89.5 (39.46-2.20)	Depositor EDS
R_{merge}	(Not available)	Depositor
R_{sym}	0.07	Depositor
$\langle I/\sigma(I) \rangle$ ¹	2.88 (at 2.20Å)	Xtrriage
Refinement program	CNS 1.1	Depositor
R, R_{free}	0.197 , 0.250 0.192 , 0.244	Depositor DCC
R_{free} test set	11749 reflections (10.00%)	wwPDB-VP
Wilson B-factor (Å ²)	31.2	Xtrriage
Anisotropy	0.306	Xtrriage
Bulk solvent k_{sol} (e/Å ³), B_{sol} (Å ²)	0.35 , 47.6	EDS
L-test for twinning ²	$\langle L \rangle = 0.49$, $\langle L^2 \rangle = 0.32$	Xtrriage
Estimated twinning fraction	0.076 for h,-k,-l	Xtrriage
F_o, F_c correlation	0.95	EDS
Total number of atoms	15119	wwPDB-VP
Average B, all atoms (Å ²)	39.0	wwPDB-VP

Xtrriage's analysis on translational NCS is as follows: *The largest off-origin peak in the Patterson function is 2.82% of the height of the origin peak. No significant pseudotranslation is detected.*

¹Intensities estimated from amplitudes.

²Theoretical values of $\langle |L| \rangle$, $\langle L^2 \rangle$ for acentric reflections are 0.5, 0.333 respectively for untwinned datasets, and 0.375, 0.2 for perfectly twinned datasets.

5 Model quality

5.1 Standard geometry

Bond lengths and bond angles in the following residue types are not validated in this section: MG, ANP

The Z score for a bond length (or angle) is the number of standard deviations the observed value is removed from the expected value. A bond length (or angle) with $|Z| > 5$ is considered an outlier worth inspection. RMSZ is the root-mean-square of all Z scores of the bond lengths (or angles).

Mol	Chain	Bond lengths		Bond angles	
		RMSZ	# Z >5	RMSZ	# Z >5
1	E	0.36	0/114	0.68	0/176
1	F	0.36	0/141	0.64	0/216
1	G	0.40	0/150	0.66	0/230
1	H	0.40	0/128	0.66	0/196
2	A	0.48	0/3360	0.99	20/4539 (0.4%)
2	B	0.54	0/3360	1.01	17/4539 (0.4%)
2	C	0.57	0/3360	1.03	15/4539 (0.3%)
2	D	0.49	0/3360	1.03	14/4539 (0.3%)
All	All	0.52	0/13973	1.00	66/18974 (0.3%)

There are no bond length outliers.

The worst 5 of 66 bond angle outliers are listed below:

Mol	Chain	Res	Type	Atoms	Z	Observed(°)	Ideal(°)
2	B	345	SER	N-CA-C	-9.40	95.98	110.17
2	A	367	ARG	N-CA-C	-9.38	101.84	113.38
2	D	367	ARG	N-CA-C	-8.50	103.07	113.19
2	C	345	SER	N-CA-C	-8.37	97.89	109.95
2	D	390	PHE	N-CA-C	7.69	122.38	112.92

There are no chirality outliers.

There are no planarity outliers.

5.2 Too-close contacts

In the following table, the Non-H and H(model) columns list the number of non-hydrogen atoms and hydrogen atoms in the chain respectively. The H(added) column lists the number of hydrogen atoms added and optimized by MolProbity. The Clashes column lists the number of clashes within the asymmetric unit, whereas Symm-Clashes lists symmetry-related clashes.

Mol	Chain	Non-H	H(model)	H(added)	Clashes	Symm-Clashes
1	E	105	0	50	1	0
1	F	129	0	68	0	0
1	G	137	0	72	2	0
1	H	117	0	62	0	0
2	A	3296	0	3312	145	0
2	B	3296	0	3312	102	0
2	C	3296	0	3312	87	0
2	D	3296	0	3312	139	0
3	A	1	0	0	0	0
3	B	1	0	0	0	0
3	C	1	0	0	0	0
3	D	1	0	0	0	0
4	A	31	0	13	5	0
4	B	31	0	13	4	0
4	C	31	0	13	1	0
4	D	31	0	13	3	0
5	A	233	0	0	11	0
5	B	315	0	0	21	0
5	C	393	0	0	21	0
5	D	282	0	0	9	0
5	E	23	0	0	0	0
5	F	22	0	0	0	0
5	G	29	0	0	1	0
5	H	22	0	0	0	0
All	All	15119	0	13552	476	0

The all-atom clashscore is defined as the number of clashes found per 1000 atoms (including hydrogen atoms). The all-atom clashscore for this structure is 17.

The worst 5 of 476 close contacts within the same asymmetric unit are listed below, sorted by their clash magnitude.

Atom-1	Atom-2	Interatomic distance (Å)	Clash overlap (Å)
2:A:352:VAL:HG13	2:A:378:ARG:HG3	1.46	0.95
2:C:348:LYS:H	2:C:370:HIS:HD2	1.17	0.92
2:A:318:ARG:HG2	2:A:389:THR:HG22	1.50	0.91
2:A:359:ARG:HB2	2:A:359:ARG:HH11	1.33	0.91
2:A:423:ARG:HD3	5:A:3067:HOH:O	1.70	0.89

There are no symmetry-related clashes.

5.3 Torsion angles [i](#)

5.3.1 Protein backbone [i](#)

In the following table, the Percentiles column shows the percent Ramachandran outliers of the chain as a percentile score with respect to all X-ray entries followed by that with respect to entries of similar resolution.

The Analysed column shows the number of residues for which the backbone conformation was analysed, and the total number of residues.

Mol	Chain	Analysed	Favoured	Allowed	Outliers	Percentiles	
2	A	418/434 (96%)	398 (95%)	17 (4%)	3 (1%)	18	19
2	B	418/434 (96%)	398 (95%)	18 (4%)	2 (0%)	24	27
2	C	418/434 (96%)	412 (99%)	4 (1%)	2 (0%)	24	27
2	D	418/434 (96%)	400 (96%)	15 (4%)	3 (1%)	18	19
All	All	1672/1736 (96%)	1608 (96%)	54 (3%)	10 (1%)	21	23

5 of 10 Ramachandran outliers are listed below:

Mol	Chain	Res	Type
2	A	349	ILE
2	B	552	GLY
2	C	239	ASP
2	B	239	ASP
2	D	239	ASP

5.3.2 Protein sidechains [i](#)

In the following table, the Percentiles column shows the percent sidechain outliers of the chain as a percentile score with respect to all X-ray entries followed by that with respect to entries of similar resolution.

The Analysed column shows the number of residues for which the sidechain conformation was analysed, and the total number of residues.

Mol	Chain	Analysed	Rotameric	Outliers	Percentiles	
2	A	364/375 (97%)	339 (93%)	25 (7%)	14	16
2	B	364/375 (97%)	339 (93%)	25 (7%)	14	16
2	C	364/375 (97%)	342 (94%)	22 (6%)	17	21
2	D	364/375 (97%)	333 (92%)	31 (8%)	10	11
All	All	1456/1500 (97%)	1353 (93%)	103 (7%)	13	16

5 of 103 residues with a non-rotameric sidechain are listed below:

Mol	Chain	Res	Type
2	C	352	VAL
2	C	608	ILE
2	D	582	ARG
2	C	389	THR
2	C	481	LEU

Sometimes sidechains can be flipped to improve hydrogen bonding and reduce clashes. 5 of 44 such sidechains are listed below:

Mol	Chain	Res	Type
2	C	488	GLN
2	D	362	ASN
2	C	520	HIS
2	D	290	GLN
2	D	419	HIS

5.3.3 RNA [i](#)

Mol	Chain	Analysed	Backbone Outliers	Pucker Outliers
1	E	4/10 (40%)	0	0
1	F	6/10 (60%)	0	0
1	G	6/10 (60%)	0	0
1	H	5/10 (50%)	0	0
All	All	21/40 (52%)	0	0

There are no RNA backbone outliers to report.

There are no RNA pucker outliers to report.

5.4 Non-standard residues in protein, DNA, RNA chains [i](#)

There are no non-standard protein/DNA/RNA residues in this entry.

5.5 Carbohydrates [i](#)

There are no oligosaccharides in this entry.

5.6 Ligand geometry [i](#)

Of 8 ligands modelled in this entry, 4 are monoatomic - leaving 4 for Mogul analysis.

In the following table, the Counts columns list the number of bonds (or angles) for which Mogul statistics could be retrieved, the number of bonds (or angles) that are observed in the model and the number of bonds (or angles) that are defined in the Chemical Component Dictionary. The Link column lists molecule types, if any, to which the group is linked. The Z score for a bond length (or angle) is the number of standard deviations the observed value is removed from the expected value. A bond length (or angle) with $|Z| > 2$ is considered an outlier worth inspection. RMSZ is the root-mean-square of all Z scores of the bond lengths (or angles).

Mol	Type	Chain	Res	Link	Bond lengths			Bond angles		
					Counts	RMSZ	# Z > 2	Counts	RMSZ	# Z > 2
4	ANP	B	2902	3	33,33,33	1.92	9 (27%)	45,52,52	2.53	17 (37%)
4	ANP	A	2901	3	33,33,33	1.84	9 (27%)	45,52,52	2.64	18 (40%)
4	ANP	C	2903	3	33,33,33	1.86	10 (30%)	45,52,52	2.54	18 (40%)
4	ANP	D	2904	3	33,33,33	1.81	9 (27%)	45,52,52	2.59	20 (44%)

In the following table, the Chirals column lists the number of chiral outliers, the number of chiral centers analysed, the number of these observed in the model and the number defined in the Chemical Component Dictionary. Similar counts are reported in the Torsion and Rings columns. '-' means no outliers of that kind were identified.

Mol	Type	Chain	Res	Link	Chirals	Torsions	Rings
4	ANP	B	2902	3	-	6/18/38/38	0/3/3/3
4	ANP	A	2901	3	-	5/18/38/38	0/3/3/3
4	ANP	C	2903	3	-	4/18/38/38	0/3/3/3
4	ANP	D	2904	3	-	7/18/38/38	0/3/3/3

The worst 5 of 37 bond length outliers are listed below:

Mol	Chain	Res	Type	Atoms	Z	Observed(Å)	Ideal(Å)
4	A	2901	ANP	PG-O1G	4.17	1.52	1.46
4	B	2902	ANP	PB-O2B	-3.98	1.46	1.56
4	B	2902	ANP	PG-O1G	3.92	1.52	1.46
4	D	2904	ANP	PB-O2B	-3.79	1.46	1.56
4	C	2903	ANP	PG-O1G	3.59	1.51	1.46

The worst 5 of 73 bond angle outliers are listed below:

Mol	Chain	Res	Type	Atoms	Z	Observed(°)	Ideal(°)
4	D	2904	ANP	C5-C4-N3	-7.65	116.18	126.72

Continued on next page...

Continued from previous page...

Mol	Chain	Res	Type	Atoms	Z	Observed(°)	Ideal(°)
4	C	2903	ANP	C5-C4-N3	-7.60	116.26	126.72
4	A	2901	ANP	C5-C4-N3	-7.53	116.35	126.72
4	B	2902	ANP	C5-C4-N3	-7.27	116.71	126.72
4	C	2903	ANP	N3-C4-N9	6.47	138.17	127.17

There are no chirality outliers.

5 of 22 torsion outliers are listed below:

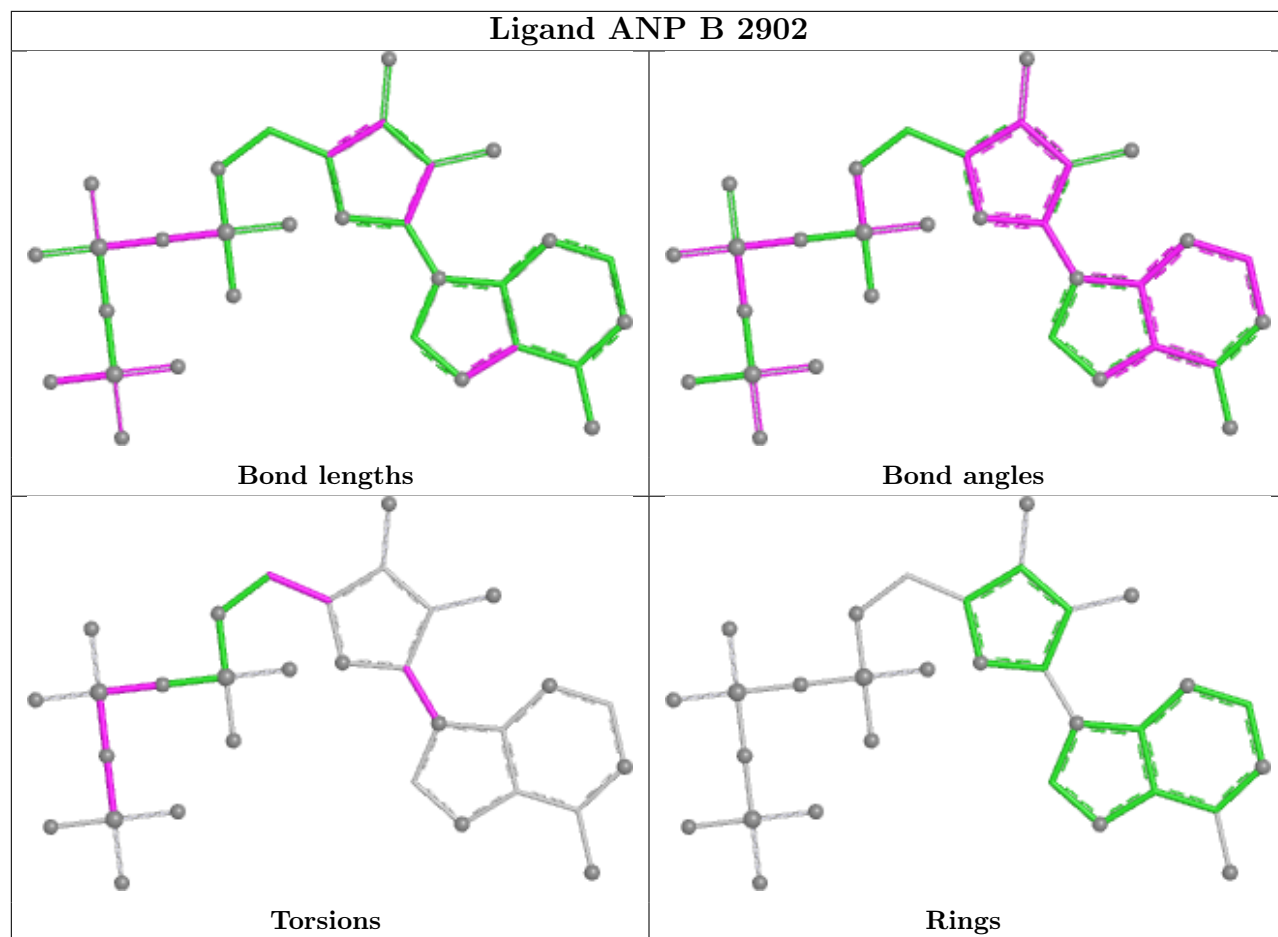
Mol	Chain	Res	Type	Atoms
4	A	2901	ANP	PB-N3B-PG-O1G
4	A	2901	ANP	PG-N3B-PB-O1B
4	A	2901	ANP	PA-O3A-PB-O2B
4	B	2902	ANP	PB-N3B-PG-O1G
4	B	2902	ANP	PA-O3A-PB-O2B

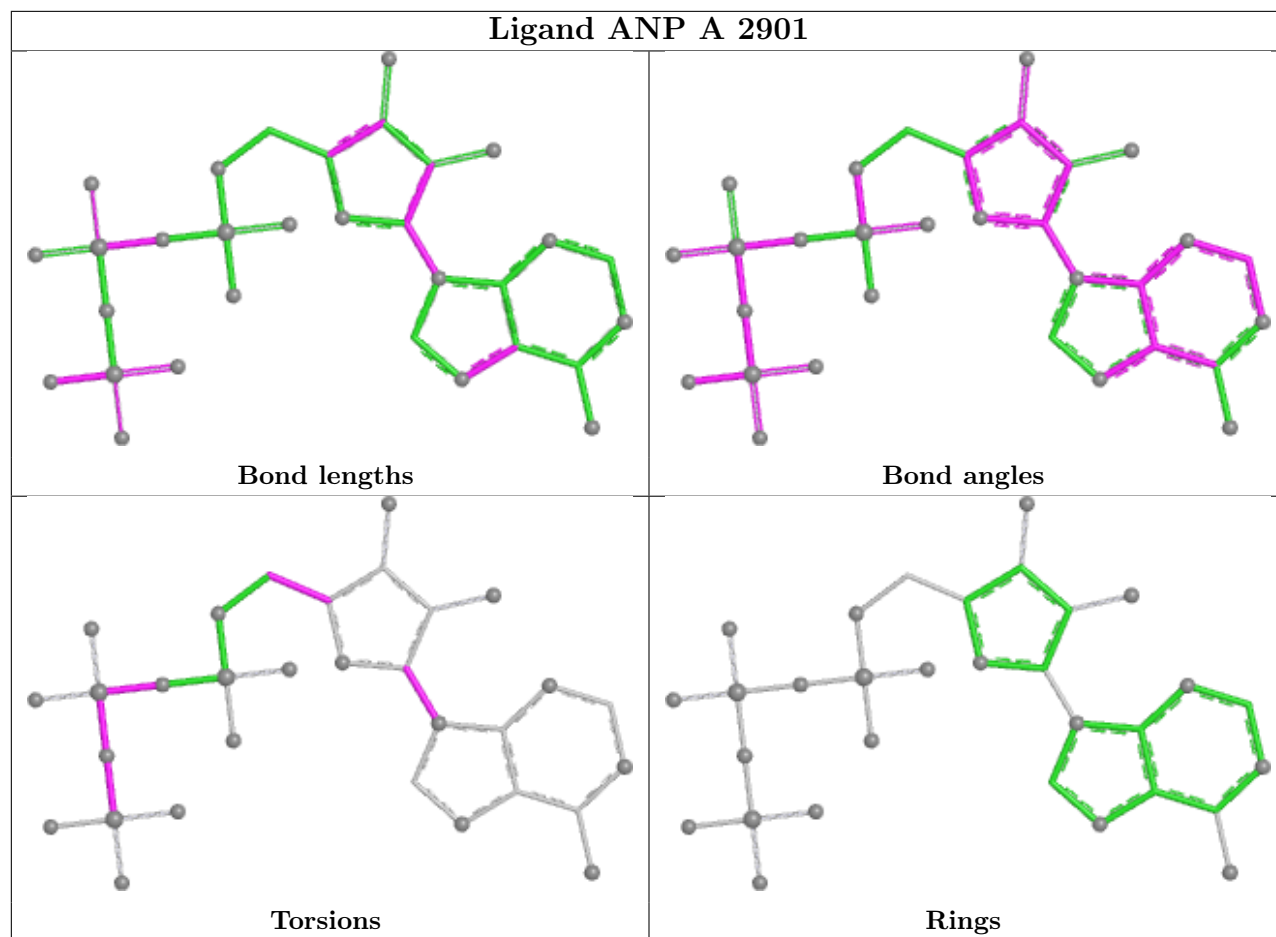
There are no ring outliers.

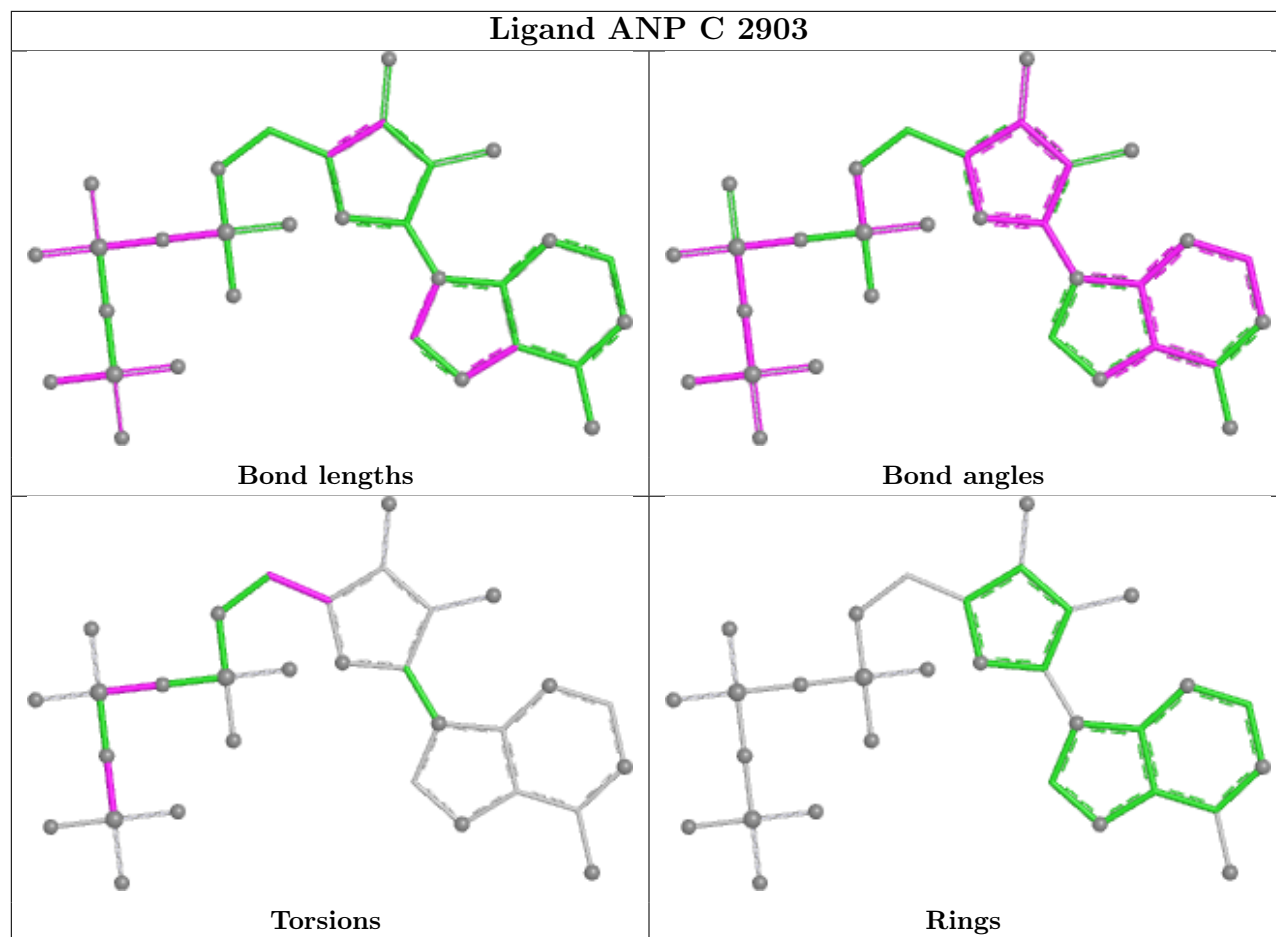
4 monomers are involved in 13 short contacts:

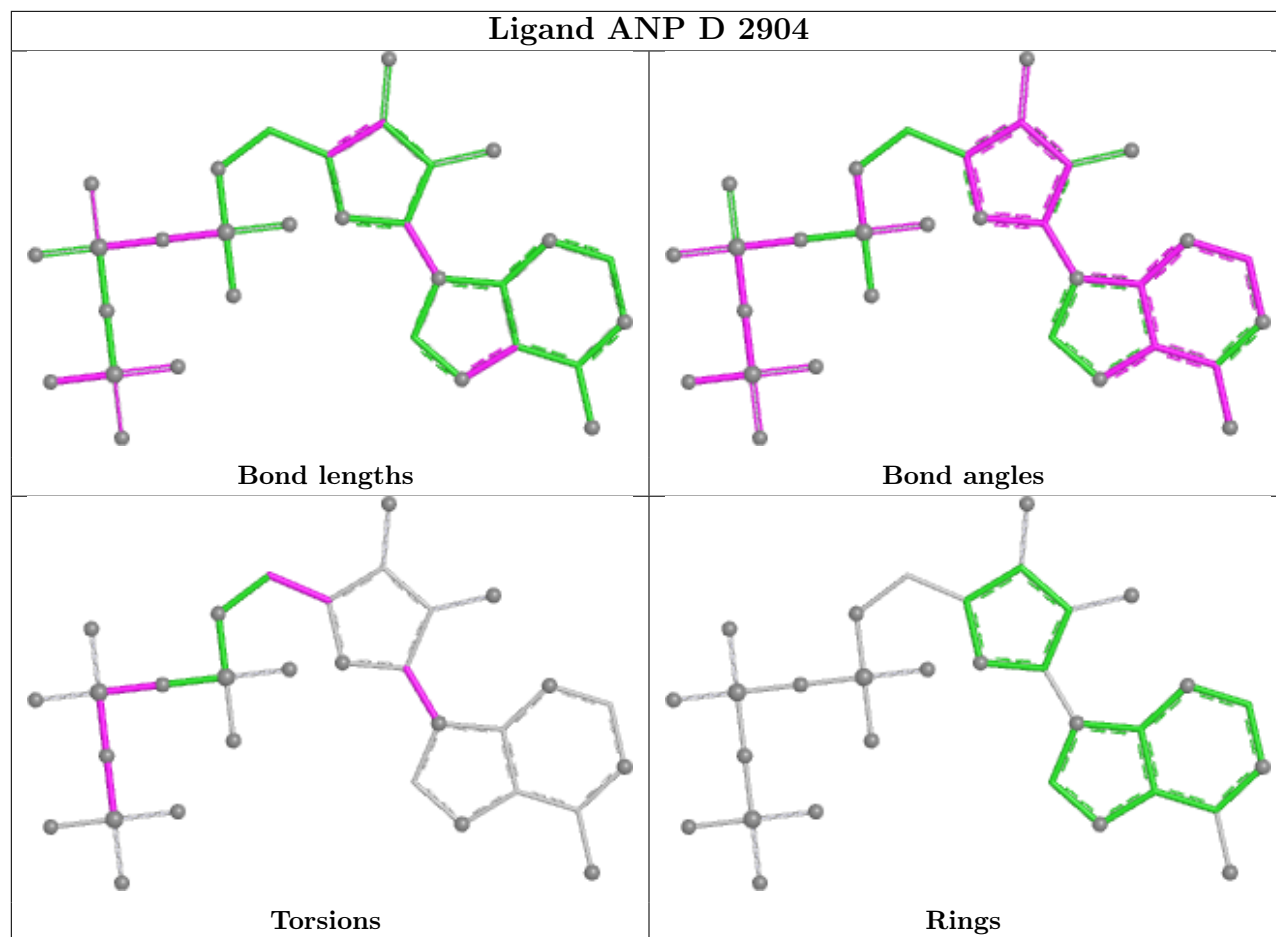
Mol	Chain	Res	Type	Clashes	Symm-Clashes
4	B	2902	ANP	4	0
4	A	2901	ANP	5	0
4	C	2903	ANP	1	0
4	D	2904	ANP	3	0

The following is a two-dimensional graphical depiction of Mogul quality analysis of bond lengths, bond angles, torsion angles, and ring geometry for all instances of the Ligand of Interest. In addition, ligands with molecular weight > 250 and outliers as shown on the validation Tables will also be included. For torsion angles, if less than 5% of the Mogul distribution of torsion angles is within 10 degrees of the torsion angle in question, then that torsion angle is considered an outlier. Any bond that is central to one or more torsion angles identified as an outlier by Mogul will be highlighted in the graph. For rings, the root-mean-square deviation (RMSD) between the ring in question and similar rings identified by Mogul is calculated over all ring torsion angles. If the average RMSD is greater than 60 degrees and the minimal RMSD between the ring in question and any Mogul-identified rings is also greater than 60 degrees, then that ring is considered an outlier. The outliers are highlighted in purple. The color gray indicates Mogul did not find sufficient equivalents in the CSD to analyse the geometry.









5.7 Other polymers [i](#)

There are no such residues in this entry.

5.8 Polymer linkage issues [i](#)

There are no chain breaks in this entry.

6 Fit of model and data [i](#)

6.1 Protein, DNA and RNA chains [i](#)

In the following table, the column labelled ‘#RSRZ > 2’ contains the number (and percentage) of RSRZ outliers, followed by percent RSRZ outliers for the chain as percentile scores relative to all X-ray entries and entries of similar resolution. The OWAB column contains the minimum, median, 95th percentile and maximum values of the occupancy-weighted average B-factor per residue. The column labelled ‘Q < 0.9’ lists the number of (and percentage) of residues with an average occupancy less than 0.9.

Mol	Chain	Analysed	<RSRZ>	#RSRZ>2	OWAB(Å ²)	Q<0.9
1	E	7/10 (70%)	-0.12	0 100 100	28, 31, 48, 59	0
1	F	7/10 (70%)	-0.07	1 (14%) 6 4	25, 30, 56, 64	0
1	G	7/10 (70%)	-0.22	0 100 100	24, 27, 53, 68	0
1	H	6/10 (60%)	-0.31	0 100 100	29, 30, 43, 70	0
2	A	420/434 (96%)	0.68	51 (12%) 8 6	23, 43, 77, 85	0
2	B	420/434 (96%)	0.28	24 (5%) 29 26	18, 36, 59, 66	0
2	C	420/434 (96%)	-0.05	10 (2%) 59 56	18, 31, 47, 59	0
2	D	420/434 (96%)	0.43	28 (6%) 24 21	20, 39, 66, 77	0
All	All	1707/1776 (96%)	0.33	114 (6%) 24 21	18, 37, 63, 85	0

The worst 5 of 114 RSRZ outliers are listed below:

Mol	Chain	Res	Type	RSRZ
2	D	248	THR	4.7
2	A	421	THR	4.1
2	A	584	GLY	3.9
2	C	438	GLU	3.8
2	A	366	THR	3.7

6.2 Non-standard residues in protein, DNA, RNA chains [i](#)

There are no non-standard protein/DNA/RNA residues in this entry.

6.3 Carbohydrates [i](#)

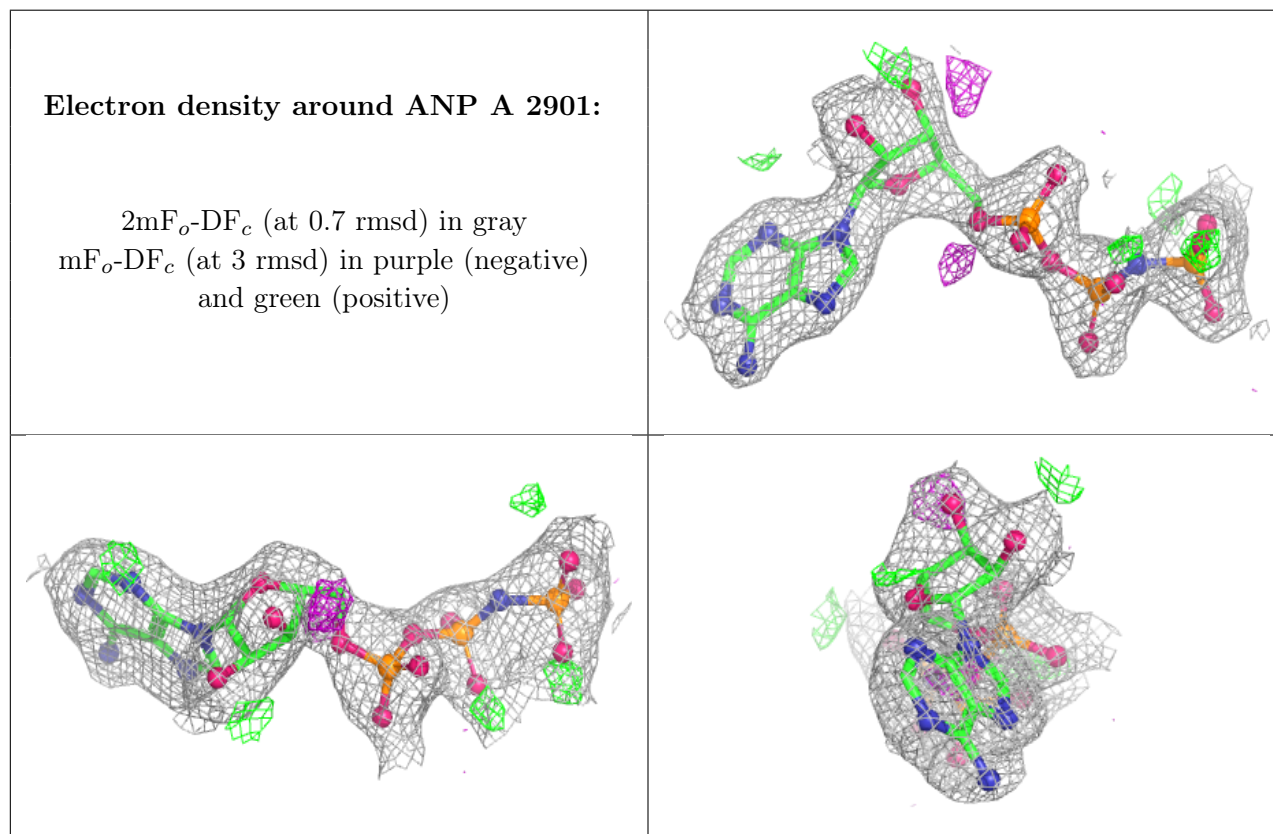
There are no oligosaccharides in this entry.

6.4 Ligands [i](#)

In the following table, the Atoms column lists the number of modelled atoms in the group and the number defined in the chemical component dictionary. The B-factors column lists the minimum, median, 95th percentile and maximum values of B factors of atoms in the group. The column labelled 'Q<0.9' lists the number of atoms with occupancy less than 0.9.

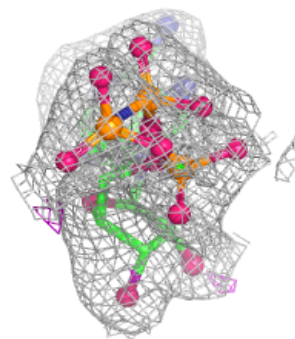
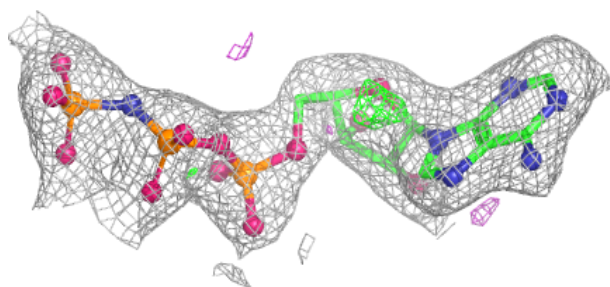
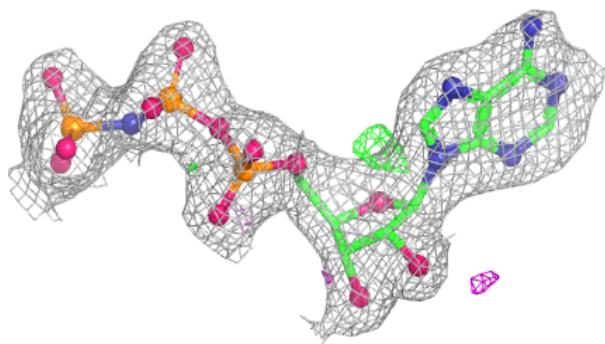
Mol	Type	Chain	Res	Atoms	RSCC	RSR	B-factors(Å ²)	Q<0.9
3	MG	A	2801	1/1	0.90	0.13	37,37,37,37	0
3	MG	C	2803	1/1	0.94	0.14	22,22,22,22	0
3	MG	B	2802	1/1	0.97	0.09	21,21,21,21	0
3	MG	D	2804	1/1	0.97	0.07	25,25,25,25	0
4	ANP	A	2901	31/31	0.97	0.07	24,36,39,39	0
4	ANP	D	2904	31/31	0.97	0.07	22,33,34,36	0
4	ANP	C	2903	31/31	0.98	0.06	17,22,25,26	0
4	ANP	B	2902	31/31	0.98	0.06	19,26,30,31	0

The following is a graphical depiction of the model fit to experimental electron density of all instances of the Ligand of Interest. In addition, ligands with molecular weight > 250 and outliers as shown on the geometry validation Tables will also be included. Each fit is shown from different orientation to approximate a three-dimensional view.

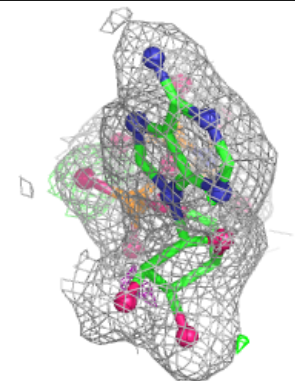
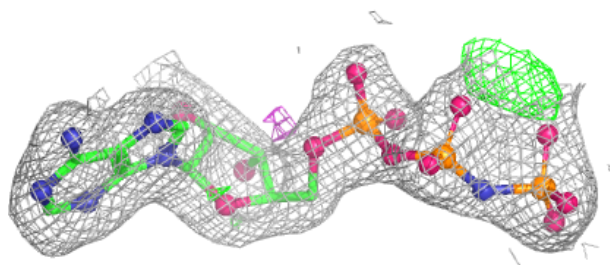
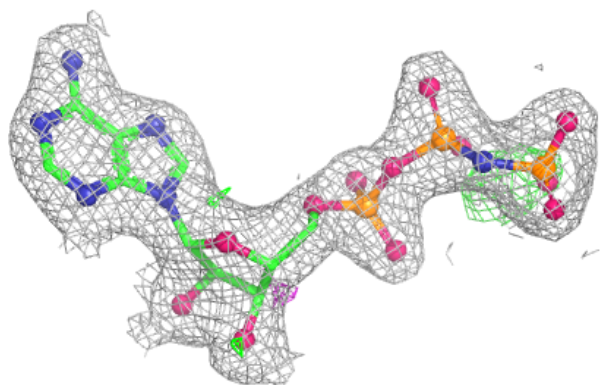


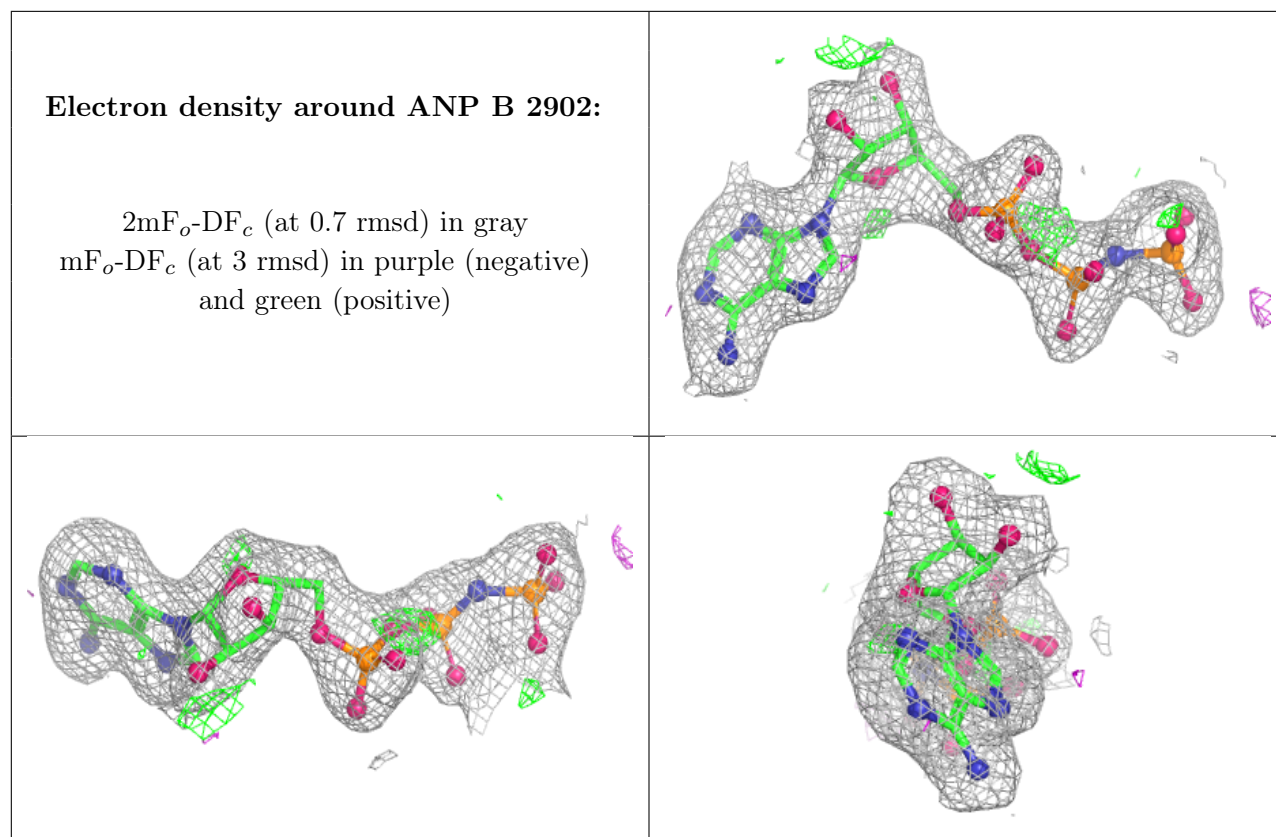
Electron density around ANP D 2904:

$2mF_o-DF_c$ (at 0.7 rmsd) in gray
 mF_o-DF_c (at 3 rmsd) in purple (negative)
and green (positive)

**Electron density around ANP C 2903:**

$2mF_o-DF_c$ (at 0.7 rmsd) in gray
 mF_o-DF_c (at 3 rmsd) in purple (negative)
and green (positive)





6.5 Other polymers [i](#)

There are no such residues in this entry.