



Full wwPDB EM Validation Report ⓘ

Mar 10, 2026 – 07:20 PM UTC

PDB ID : 9COD / pdb_00009cod
EMDB ID : EMD-45776
Title : C15 symmetrized DEV collar
Authors : Iglesias, S.M.; Hou, C.F.D.; Li, F.; Cingolani, G.
Deposited on : 2024-07-16
Resolution : 4.70 Å(reported)

This is a Full wwPDB EM Validation Report for a publicly released PDB entry.

We welcome your comments at validation@mail.wwpdb.org

A user guide is available at

<https://www.wwpdb.org/validation/2017/EMValidationReportHelp>

with specific help available everywhere you see the ⓘ symbol.

The types of validation reports are described at

<http://www.wwpdb.org/validation/2017/FAQs#types>.

The following versions of software and data (see [references ⓘ](#)) were used in the production of this report:

EMDB validation analysis : 0.0.1.dev132
MolProbity : 4-5-2 with Phenix2.0
Percentile statistics : 20250101.v01 (using entries in the PDB archive January 1st 2025)
EM percentile statistics : 202505.v01 (Using data in the EMDB archive up until May 2025)
MapQ : 1.9.13
Ideal geometry (proteins) : Engh & Huber (2001)
Ideal geometry (DNA, RNA) : Parkinson et al. (1996)
Validation Pipeline (wwPDB-VP) : 2.49

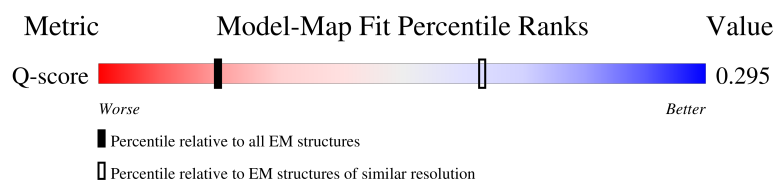
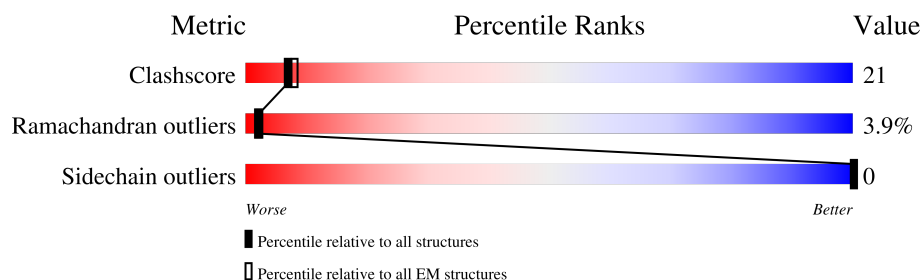
1 Overall quality at a glance

The following experimental techniques were used to determine the structure:

ELECTRON MICROSCOPY

The reported resolution of this entry is 4.70 Å.

Percentile scores (ranging between 0-100) for global validation metrics of the entry are shown in the following graphic. The table shows the number of entries on which the scores are based.








Metric	Whole archive (#Entries)	EM structures (#Entries)	Similar EM resolution (#Entries, resolution range(Å))
Clashscore	217187	24013	-
Ramachandran outliers	211220	23611	-
Sidechain outliers	210688	23127	-
Q-score	-	25397	1989 (4.20 - 5.20)

The table below summarises the geometric issues observed across the polymeric chains and their fit to the map. The red, orange, yellow and green segments of the bar indicate the fraction of residues that contain outliers for ≥ 3 , 2, 1 and 0 types of geometric quality criteria respectively. A grey segment represents the fraction of residues that are not modelled. The numeric value for each fraction is indicated below the corresponding segment, with a dot representing fractions $\leq 5\%$. The upper red bar (where present) indicates the fraction of residues that have poor fit to the EM map (all-atom inclusion $< 40\%$). The numeric value is given above the bar.

Mol	Chain	Length	Quality of chain
1	A	1090	6% . 90%
1	B	1090	5% . 90%
1	C	1090	6% . 90%
1	D	1090	6% . 90%

Continued on next page...

Continued from previous page...

Mol	Chain	Length	Quality of chain
1	E	1090	 6% . 90%
1	F	1090	 6% . 90%
1	G	1090	 6% . 90%
1	H	1090	 6% . 90%
1	I	1090	 6% . 90%
1	J	1090	 6% . 90%
1	K	1090	 6% . 90%
1	L	1090	 6% . 90%
1	M	1090	 6% . 90%
1	N	1090	 6% . 90%
1	O	1090	 6% . 90%

2 Entry composition

There is only 1 type of molecule in this entry. The entry contains 12405 atoms, of which 0 are hydrogens and 0 are deuteriums.

In the tables below, the AltConf column contains the number of residues with at least one atom in alternate conformation and the Trace column contains the number of residues modelled with at most 2 atoms.

- Molecule 1 is a protein called SGNH hydrolase-type esterase domain-containing protein.

Mol	Chain	Residues	Atoms					AltConf	Trace
1	A	105	Total	C	N	O	S	0	0
			827	520	126	175	6		
1	B	105	Total	C	N	O	S	0	0
			827	520	126	175	6		
1	C	105	Total	C	N	O	S	0	0
			827	520	126	175	6		
1	D	105	Total	C	N	O	S	0	0
			827	520	126	175	6		
1	E	105	Total	C	N	O	S	0	0
			827	520	126	175	6		
1	F	105	Total	C	N	O	S	0	0
			827	520	126	175	6		
1	G	105	Total	C	N	O	S	0	0
			827	520	126	175	6		
1	H	105	Total	C	N	O	S	0	0
			827	520	126	175	6		
1	I	105	Total	C	N	O	S	0	0
			827	520	126	175	6		
1	J	105	Total	C	N	O	S	0	0
			827	520	126	175	6		
1	K	105	Total	C	N	O	S	0	0
			827	520	126	175	6		
1	L	105	Total	C	N	O	S	0	0
			827	520	126	175	6		
1	M	105	Total	C	N	O	S	0	0
			827	520	126	175	6		
1	N	105	Total	C	N	O	S	0	0
			827	520	126	175	6		
1	O	105	Total	C	N	O	S	0	0
			827	520	126	175	6		

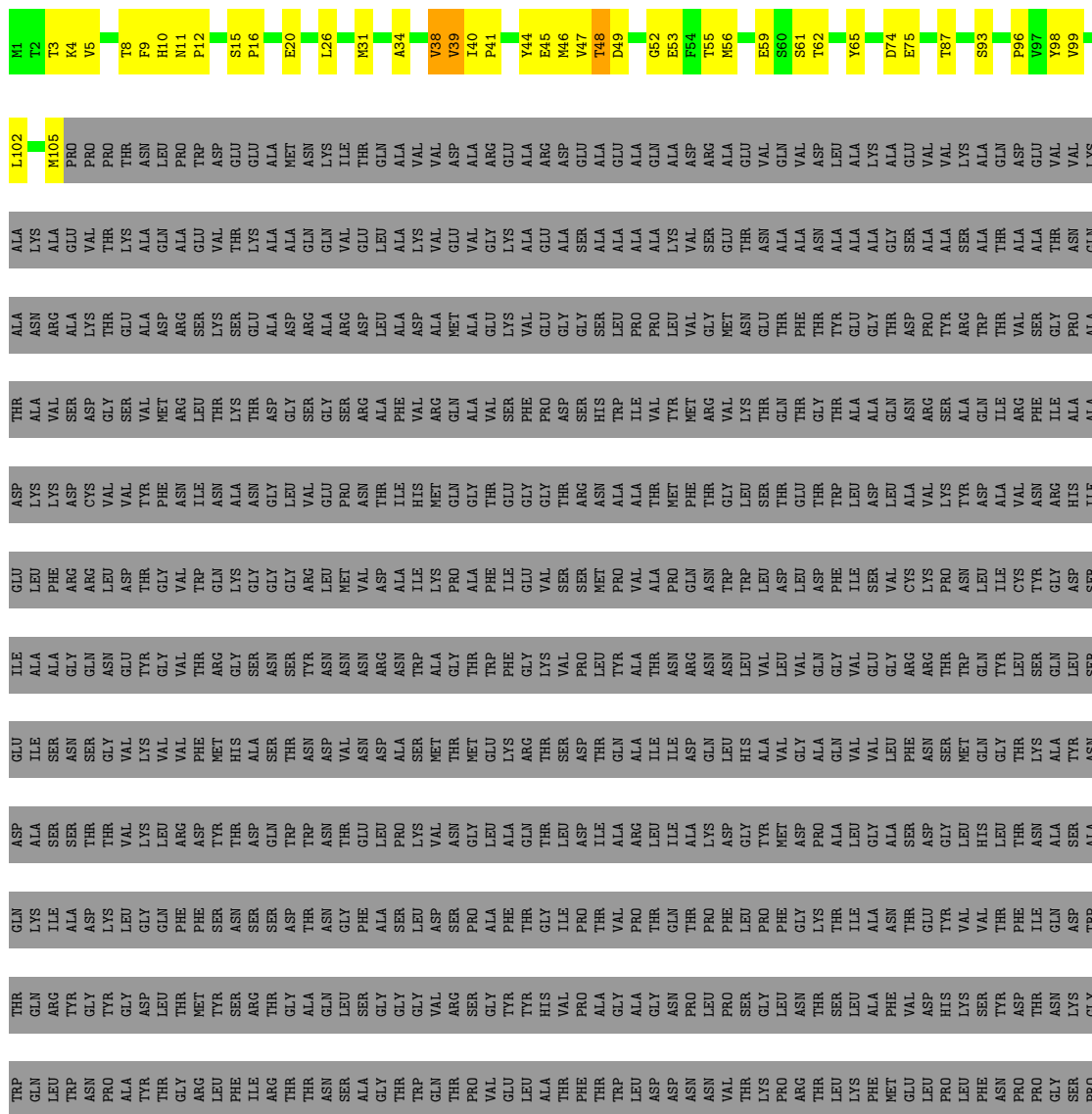




[illegible]

- Molecule 1: SGNH hydrolase-type esterase domain-containing protein

Chain G:  6% 90%

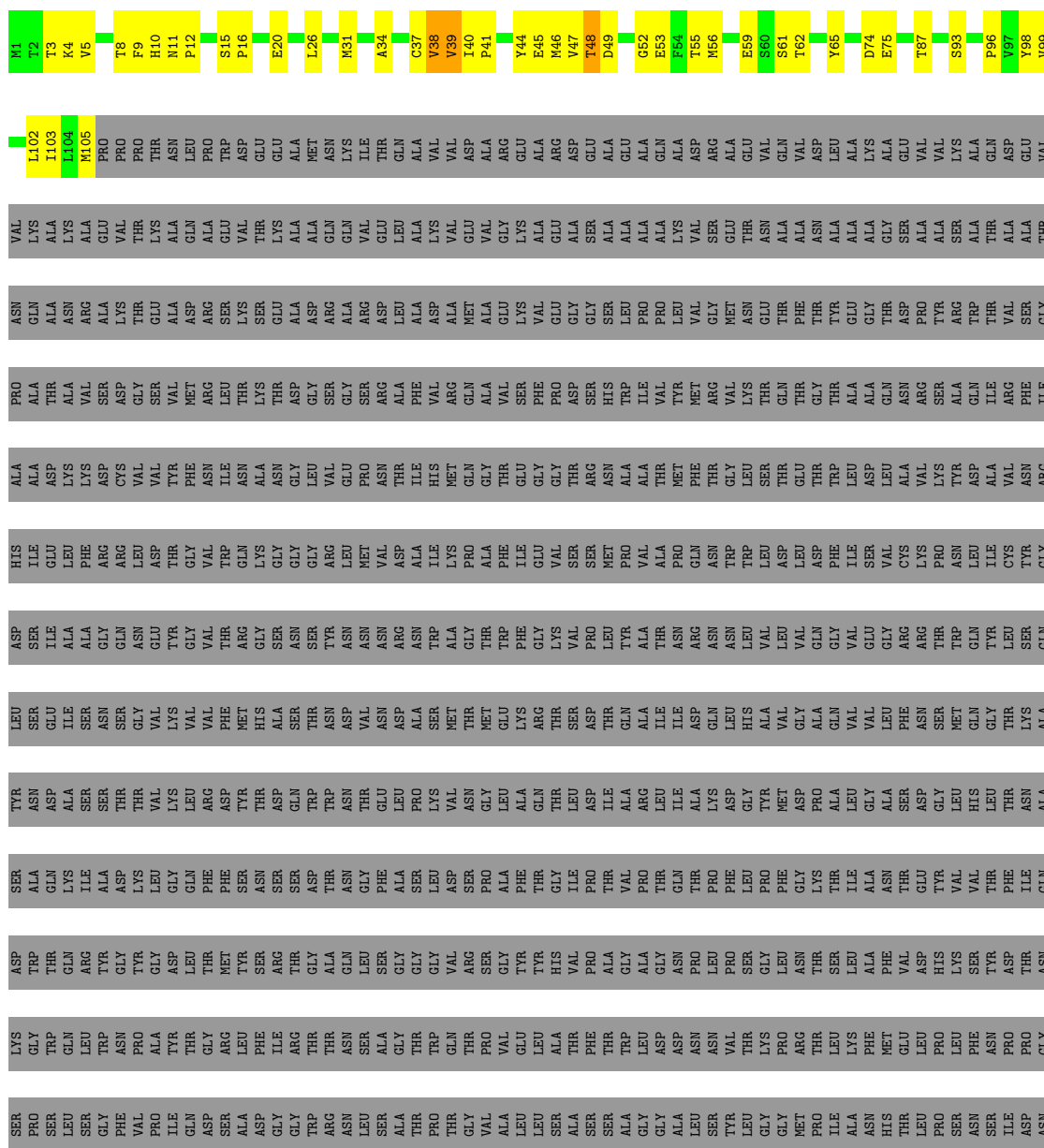




[illegible]

- Molecule 1: SGNH hydrolase-type esterase domain-containing protein

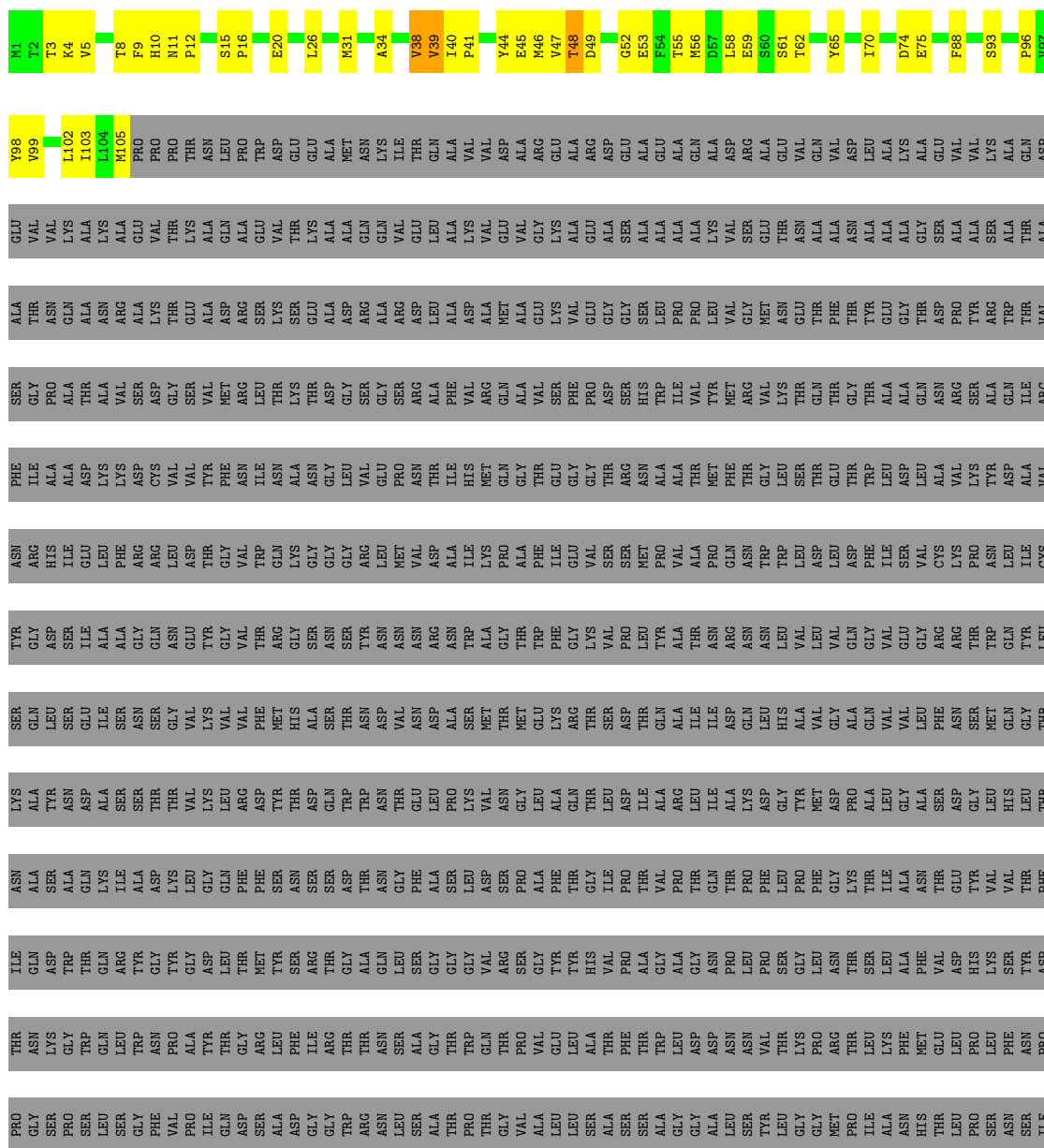
Chain I: 6% 1% 90%



[illegible]

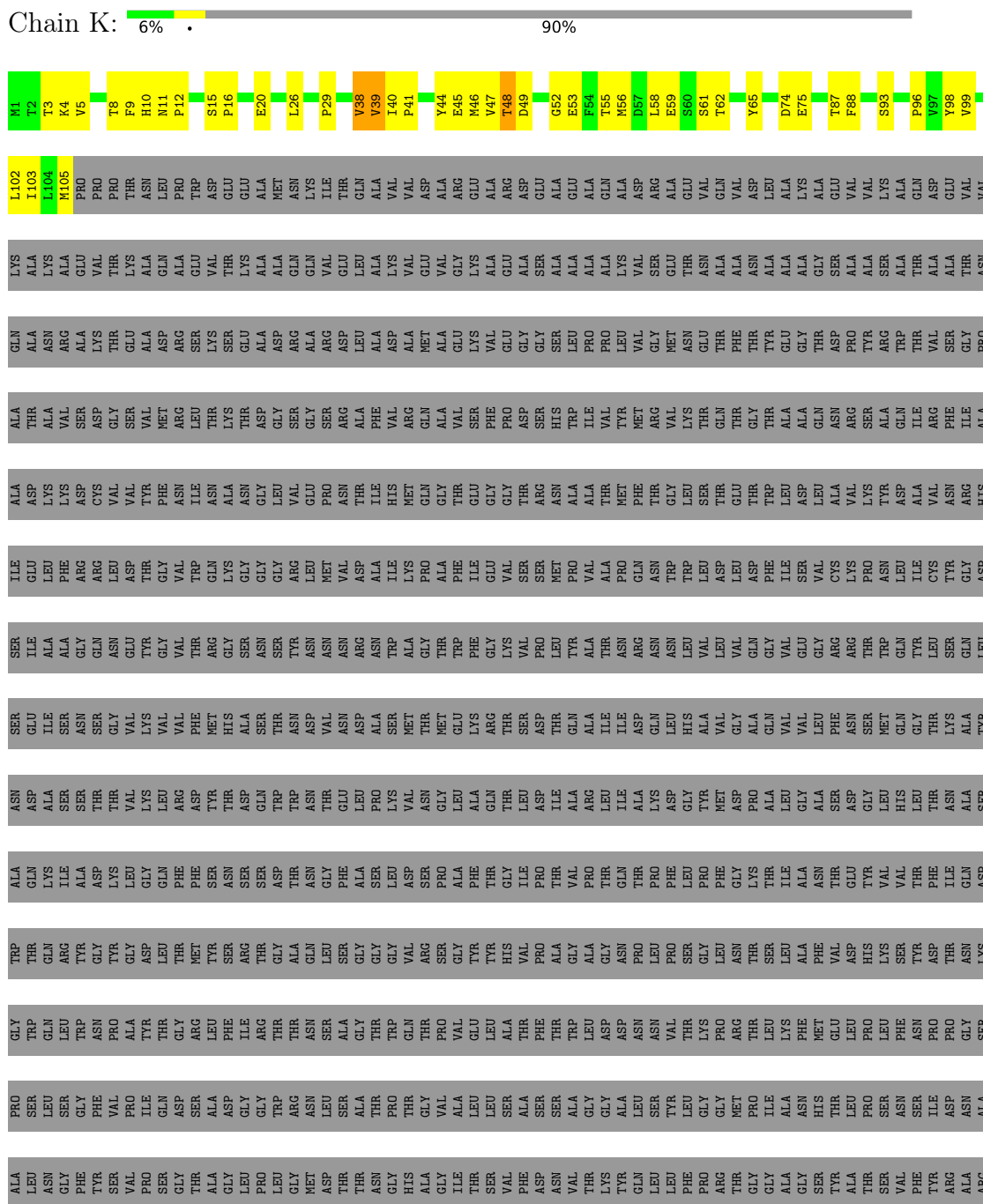
- Molecule 1: SGNH hydrolase-type esterase domain-containing protein

Chain J: 6% 1% 90%



[illegible]

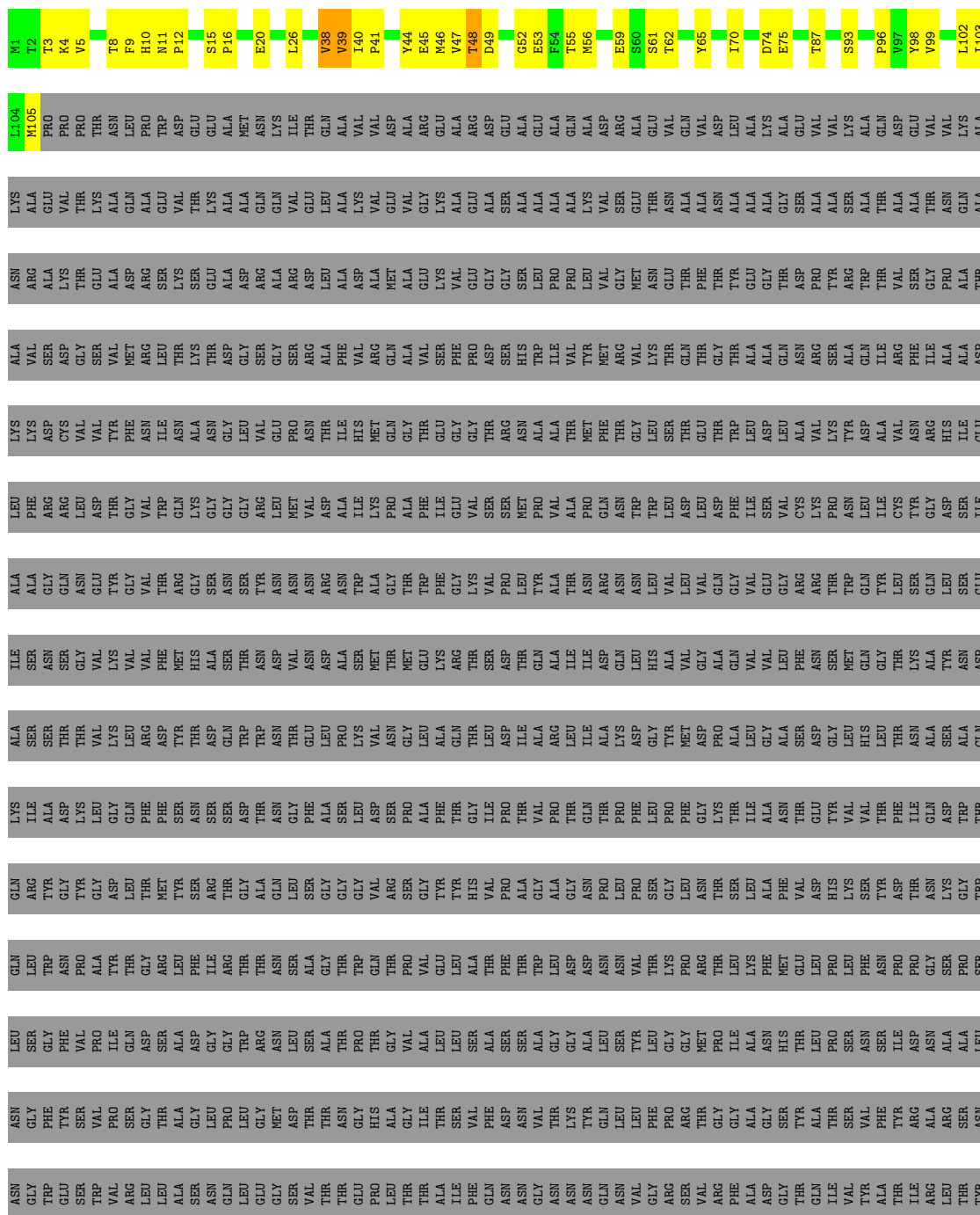
- Molecule 1: SGNH hydrolase-type esterase domain-containing protein



ILE
TYR
ARG
VAL
ALA
GLY
TYR
THR
ALA
HIS
SER
PHE
ALA
SER
THR
SER
PHE
ILE
ASN
CYS
ALA
VAL
VAL
ALA
VAL
GLY
ARG
TRP
LYS

- Molecule 1: SGNH hydrolase-type esterase domain-containing protein

Chain L:  6% 1% 90%



[illegible]

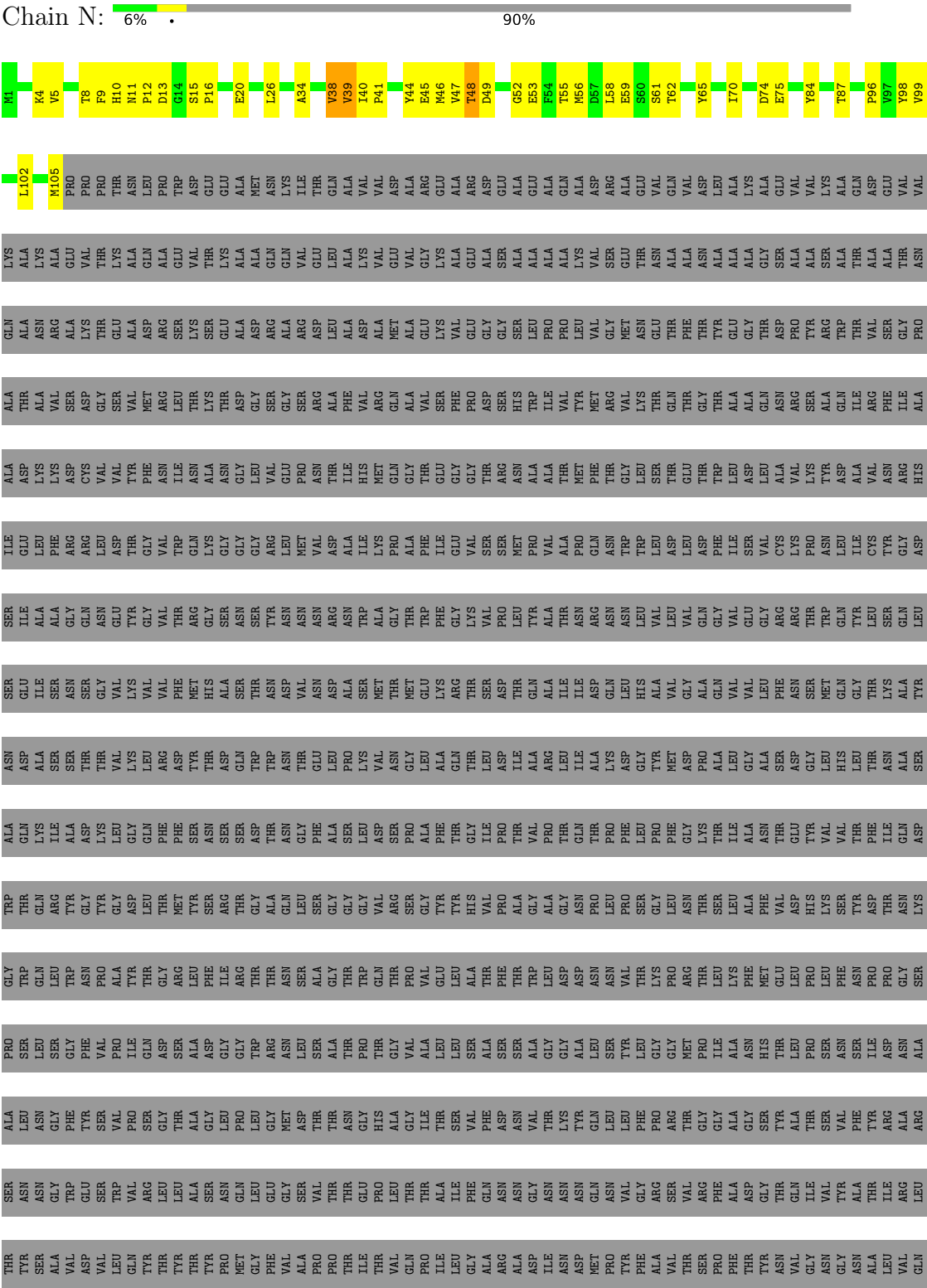
- Molecule 1: SGNH hydrolase-type esterase domain-containing protein

Chain M:  6% . 90%

M1	M105
K4	P80
V5	P90
T8	THR
F9	ASN
H10	LEU
N11	P80
P12	TRP
S15	GLU
P16	GLY
E20	ALA
L26	MET
M31	LYS
A34	VAL
V38	GLN
V39	ASP
I40	ALA
P41	ARG
Y44	GLU
E45	ALA
M46	ALA
M47	GLY
T48	ALA
D49	GLU
G52	ALA
E53	GLN
F54	LYS
T55	VAL
M56	ASP
E59	ARG
S60	ALA
S61	VAL
T62	ASN
Y65	LEU
D74	ALA
E75	GLY
T87	THR
P96	VAL
V97	GLN
Y98	ASP
V99	GLY
L102	VAL
I103	LYS
L104	ALA

VAL	ALA	GLY	TYR	THR	ALA	HIS	SER	PHE	ALA	SER	THR	SER	PHE	ILE	ASN	CYS	ALA	VAL	VAL	ALA	VAL	GLY	GLY	ARG	TRP	TRP	LYS
-----	-----	-----	-----	-----	-----	-----	-----	-----	-----	-----	-----	-----	-----	-----	-----	-----	-----	-----	-----	-----	-----	-----	-----	-----	-----	-----	-----

- Molecule 1: SGNH hydrolase-type esterase domain-containing protein



- Molecule 1: SGNH hydrolase-type esterase domain-containing protein

[illegible]

4 Experimental information

Property	Value	Source
EM reconstruction method	SINGLE PARTICLE	Depositor
Imposed symmetry	POINT, Not provided	
Number of particles used	3200	Depositor
Resolution determination method	FSC 0.143 CUT-OFF	Depositor
CTF correction method	PHASE FLIPPING AND AMPLITUDE CORRECTION	Depositor
Microscope	FEI TITAN KRIOS	Depositor
Voltage (kV)	300	Depositor
Electron dose ($e^-/\text{\AA}^2$)	50	Depositor
Minimum defocus (nm)	800	Depositor
Maximum defocus (nm)	1600	Depositor
Magnification	Not provided	
Image detector	GATAN K3 (6k x 4k)	Depositor
Maximum map value	0.035	Depositor
Minimum map value	-0.017	Depositor
Average map value	0.000	Depositor
Map value standard deviation	0.001	Depositor
Recommended contour level	0.0018	Depositor
Map size (Å)	573.44, 573.44, 573.44	wwPDB
Map dimensions	512, 512, 512	wwPDB
Map angles (°)	90.0, 90.0, 90.0	wwPDB
Pixel spacing (Å)	1.12, 1.12, 1.12	Depositor

5 Model quality [i](#)

5.1 Standard geometry [i](#)

The Z score for a bond length (or angle) is the number of standard deviations the observed value is removed from the expected value. A bond length (or angle) with $|Z| > 5$ is considered an outlier worth inspection. RMSZ is the root-mean-square of all Z scores of the bond lengths (or angles).

Mol	Chain	Bond lengths		Bond angles	
		RMSZ	$\# Z > 5$	RMSZ	$\# Z > 5$
1	A	0.21	0/847	0.67	2/1156 (0.2%)
1	B	0.21	0/847	0.67	2/1156 (0.2%)
1	C	0.21	0/847	0.67	2/1156 (0.2%)
1	D	0.21	0/847	0.67	2/1156 (0.2%)
1	E	0.21	0/847	0.67	2/1156 (0.2%)
1	F	0.21	0/847	0.67	2/1156 (0.2%)
1	G	0.21	0/847	0.68	2/1156 (0.2%)
1	H	0.21	0/847	0.68	2/1156 (0.2%)
1	I	0.21	0/847	0.67	2/1156 (0.2%)
1	J	0.21	0/847	0.67	2/1156 (0.2%)
1	K	0.21	0/847	0.67	2/1156 (0.2%)
1	L	0.21	0/847	0.67	2/1156 (0.2%)
1	M	0.21	0/847	0.67	2/1156 (0.2%)
1	N	0.21	0/847	0.67	2/1156 (0.2%)
1	O	0.21	0/847	0.68	2/1156 (0.2%)
All	All	0.21	0/12705	0.67	30/17340 (0.2%)

There are no bond length outliers.

All (30) bond angle outliers are listed below:

Mol	Chain	Res	Type	Atoms	Z	Observed(°)	Ideal(°)
1	C	48	THR	CA-C-N	6.15	133.28	121.54
1	C	48	THR	C-N-CA	6.15	133.28	121.54
1	M	48	THR	CA-C-N	6.15	133.28	121.54
1	M	48	THR	C-N-CA	6.15	133.28	121.54
1	F	48	THR	CA-C-N	6.14	133.28	121.54
1	F	48	THR	C-N-CA	6.14	133.28	121.54
1	B	48	THR	CA-C-N	6.14	133.27	121.54
1	B	48	THR	C-N-CA	6.14	133.27	121.54
1	J	48	THR	CA-C-N	6.14	133.27	121.54
1	J	48	THR	C-N-CA	6.14	133.27	121.54
1	I	48	THR	CA-C-N	6.14	133.26	121.54
1	I	48	THR	C-N-CA	6.14	133.26	121.54

Continued on next page...

Continued from previous page...

Mol	Chain	Res	Type	Atoms	Z	Observed(°)	Ideal(°)
1	K	48	THR	CA-C-N	6.14	133.26	121.54
1	K	48	THR	C-N-CA	6.14	133.26	121.54
1	L	48	THR	CA-C-N	6.13	133.26	121.54
1	L	48	THR	C-N-CA	6.13	133.26	121.54
1	G	48	THR	CA-C-N	6.13	133.25	121.54
1	G	48	THR	C-N-CA	6.13	133.25	121.54
1	D	48	THR	CA-C-N	6.12	133.24	121.54
1	D	48	THR	C-N-CA	6.12	133.24	121.54
1	A	48	THR	CA-C-N	6.12	133.23	121.54
1	A	48	THR	C-N-CA	6.12	133.23	121.54
1	H	48	THR	CA-C-N	6.12	133.23	121.54
1	H	48	THR	C-N-CA	6.12	133.23	121.54
1	E	48	THR	CA-C-N	6.12	133.22	121.54
1	E	48	THR	C-N-CA	6.12	133.22	121.54
1	O	48	THR	CA-C-N	6.12	133.22	121.54
1	O	48	THR	C-N-CA	6.12	133.22	121.54
1	N	48	THR	CA-C-N	6.11	133.21	121.54
1	N	48	THR	C-N-CA	6.11	133.21	121.54

There are no chirality outliers.

There are no planarity outliers.

5.2 Too-close contacts ⓘ

In the following table, the Non-H and H(model) columns list the number of non-hydrogen atoms and hydrogen atoms in the chain respectively. The H(added) column lists the number of hydrogen atoms added and optimized by MolProbity. The Clashes column lists the number of clashes within the asymmetric unit, whereas Symm-Clashes lists symmetry-related clashes.

Mol	Chain	Non-H	H(model)	H(added)	Clashes	Symm-Clashes
1	A	827	0	763	40	0
1	B	827	0	763	45	0
1	C	827	0	763	40	0
1	D	827	0	763	36	0
1	E	827	0	763	39	0
1	F	827	0	763	37	0
1	G	827	0	763	38	0
1	H	827	0	763	39	0
1	I	827	0	763	40	0
1	J	827	0	763	43	0
1	K	827	0	763	47	0

Continued on next page...

Continued from previous page...

Mol	Chain	Non-H	H(model)	H(added)	Clashes	Symm-Clashes
1	L	827	0	763	39	0
1	M	827	0	763	37	0
1	N	827	0	763	42	0
1	O	827	0	763	38	0
All	All	12405	0	11445	506	0

The all-atom clashscore is defined as the number of clashes found per 1000 atoms (including hydrogen atoms). The all-atom clashscore for this structure is 21.

All (506) close contacts within the same asymmetric unit are listed below, sorted by their clash magnitude.

Atom-1	Atom-2	Interatomic distance (Å)	Clash overlap (Å)
1:A:38:VAL:HG13	1:A:39:VAL:H	1.34	0.93
1:F:38:VAL:HG13	1:F:39:VAL:H	1.34	0.93
1:D:38:VAL:HG13	1:D:39:VAL:H	1.34	0.93
1:K:38:VAL:HG13	1:K:39:VAL:H	1.34	0.92
1:J:38:VAL:HG13	1:J:39:VAL:H	1.34	0.92
1:G:38:VAL:HG13	1:G:39:VAL:H	1.34	0.92
1:B:38:VAL:HG13	1:B:39:VAL:H	1.34	0.92
1:E:38:VAL:HG13	1:E:39:VAL:H	1.34	0.91
1:H:38:VAL:HG13	1:H:39:VAL:H	1.34	0.91
1:C:38:VAL:HG13	1:C:39:VAL:H	1.34	0.91
1:L:38:VAL:HG13	1:L:39:VAL:H	1.34	0.91
1:N:38:VAL:HG13	1:N:39:VAL:H	1.34	0.91
1:I:38:VAL:HG13	1:I:39:VAL:H	1.34	0.90
1:O:38:VAL:HG13	1:O:39:VAL:H	1.34	0.90
1:M:38:VAL:HG13	1:M:39:VAL:H	1.34	0.90
1:K:40:ILE:H	1:N:11:ASN:ND2	1.80	0.79
1:K:58:LEU:HD22	1:N:13:ASP:N	2.06	0.71
1:H:40:ILE:HG12	1:M:11:ASN:ND2	2.07	0.70
1:G:40:ILE:HG12	1:K:11:ASN:ND2	2.08	0.68
1:F:5:VAL:HG12	1:F:56:MET:H	1.59	0.68
1:C:5:VAL:HG12	1:C:56:MET:H	1.59	0.68
1:L:5:VAL:HG12	1:L:56:MET:H	1.59	0.68
1:K:5:VAL:HG12	1:K:56:MET:H	1.59	0.68
1:H:5:VAL:HG12	1:H:56:MET:H	1.59	0.68
1:A:5:VAL:HG12	1:A:56:MET:H	1.59	0.67
1:I:5:VAL:HG12	1:I:56:MET:H	1.59	0.67
1:J:5:VAL:HG12	1:J:56:MET:H	1.59	0.67
1:M:5:VAL:HG12	1:M:56:MET:H	1.59	0.67
1:G:5:VAL:HG12	1:G:56:MET:H	1.59	0.67

Continued on next page...

Continued from previous page...

Atom-1	Atom-2	Interatomic distance (Å)	Clash overlap (Å)
1:K:40:ILE:HD12	1:N:70:ILE:HD12	1.77	0.67
1:B:5:VAL:HG12	1:B:56:MET:H	1.59	0.66
1:D:5:VAL:HG12	1:D:56:MET:H	1.59	0.66
1:K:38:VAL:HG11	1:N:9:PHE:HA	1.77	0.66
1:O:5:VAL:HG12	1:O:56:MET:H	1.59	0.66
1:E:5:VAL:HG12	1:E:56:MET:H	1.59	0.66
1:N:5:VAL:HG12	1:N:56:MET:H	1.59	0.66
1:A:12:PRO:HG2	1:A:15:SER:HB3	1.78	0.66
1:B:12:PRO:HG2	1:B:15:SER:HB3	1.78	0.66
1:D:12:PRO:HG2	1:D:15:SER:HB3	1.78	0.66
1:C:48:THR:HG22	1:C:52:GLY:HA2	1.78	0.66
1:I:48:THR:HG22	1:I:52:GLY:HA2	1.78	0.66
1:A:48:THR:HG22	1:A:52:GLY:HA2	1.78	0.66
1:L:48:THR:HG22	1:L:52:GLY:HA2	1.78	0.66
1:O:48:THR:HG22	1:O:52:GLY:HA2	1.78	0.66
1:E:48:THR:HG22	1:E:52:GLY:HA2	1.78	0.66
1:G:11:ASN:ND2	1:O:40:ILE:HG12	2.09	0.66
1:H:48:THR:HG22	1:H:52:GLY:HA2	1.78	0.66
1:L:12:PRO:HG2	1:L:15:SER:HB3	1.78	0.66
1:M:48:THR:HG22	1:M:52:GLY:HA2	1.78	0.66
1:B:48:THR:HG22	1:B:52:GLY:HA2	1.78	0.65
1:J:48:THR:HG22	1:J:52:GLY:HA2	1.78	0.65
1:D:40:ILE:HG12	1:H:11:ASN:ND2	2.11	0.65
1:H:12:PRO:HG2	1:H:15:SER:HB3	1.78	0.65
1:C:12:PRO:HG2	1:C:15:SER:HB3	1.78	0.65
1:D:48:THR:HG22	1:D:52:GLY:HA2	1.78	0.65
1:M:12:PRO:HG2	1:M:15:SER:HB3	1.78	0.65
1:K:48:THR:HG22	1:K:52:GLY:HA2	1.78	0.65
1:F:48:THR:HG22	1:F:52:GLY:HA2	1.78	0.65
1:G:48:THR:HG22	1:G:52:GLY:HA2	1.78	0.65
1:J:12:PRO:HG2	1:J:15:SER:HB3	1.78	0.65
1:N:48:THR:HG22	1:N:52:GLY:HA2	1.78	0.65
1:E:12:PRO:HG2	1:E:15:SER:HB3	1.78	0.65
1:F:12:PRO:HG2	1:F:15:SER:HB3	1.78	0.65
1:A:11:ASN:ND2	1:C:40:ILE:HG12	2.13	0.64
1:O:12:PRO:HG2	1:O:15:SER:HB3	1.78	0.64
1:I:12:PRO:HG2	1:I:15:SER:HB3	1.78	0.64
1:C:45:GLU:O	1:C:46:MET:HE2	1.98	0.64
1:G:38:VAL:HG11	1:K:9:PHE:HA	1.79	0.64
1:J:45:GLU:O	1:J:46:MET:HE2	1.98	0.64
1:G:12:PRO:HG2	1:G:15:SER:HB3	1.78	0.64

Continued on next page...

Continued from previous page...

Atom-1	Atom-2	Interatomic distance (Å)	Clash overlap (Å)
1:N:12:PRO:HG2	1:N:15:SER:HB3	1.78	0.64
1:N:45:GLU:O	1:N:46:MET:HE2	1.98	0.64
1:E:45:GLU:O	1:E:46:MET:HE2	1.98	0.64
1:B:38:VAL:HG11	1:L:9:PHE:HA	1.80	0.64
1:D:45:GLU:O	1:D:46:MET:HE2	1.98	0.64
1:F:45:GLU:O	1:F:46:MET:HE2	1.98	0.64
1:G:45:GLU:O	1:G:46:MET:HE2	1.98	0.64
1:H:45:GLU:O	1:H:46:MET:HE2	1.98	0.64
1:K:12:PRO:HG2	1:K:15:SER:HB3	1.78	0.64
1:I:45:GLU:O	1:I:46:MET:HE2	1.98	0.63
1:L:45:GLU:O	1:L:46:MET:HE2	1.98	0.63
1:O:45:GLU:O	1:O:46:MET:HE2	1.98	0.63
1:E:40:ILE:HG12	1:I:11:ASN:ND2	2.13	0.63
1:B:40:ILE:HG12	1:L:11:ASN:ND2	2.14	0.63
1:M:45:GLU:O	1:M:46:MET:HE2	1.98	0.63
1:A:45:GLU:O	1:A:46:MET:HE2	1.98	0.63
1:G:11:ASN:HD22	1:O:40:ILE:HG12	1.62	0.63
1:K:45:GLU:O	1:K:46:MET:HE2	1.98	0.63
1:B:45:GLU:O	1:B:46:MET:HE2	1.98	0.63
1:D:11:ASN:ND2	1:L:40:ILE:HG12	2.14	0.63
1:I:40:ILE:HG12	1:O:11:ASN:ND2	2.14	0.62
1:A:40:ILE:HG12	1:B:11:ASN:ND2	2.14	0.62
1:A:38:VAL:HG11	1:B:9:PHE:HA	1.82	0.62
1:F:40:ILE:HG12	1:J:11:ASN:ND2	2.15	0.61
1:K:20:GLU:O	1:K:48:THR:OG1	2.18	0.61
1:D:11:ASN:HD22	1:L:40:ILE:HG12	1.66	0.60
1:G:34:ALA:O	1:K:98:TYR:HE2	1.85	0.60
1:I:38:VAL:HG11	1:O:9:PHE:HA	1.82	0.60
1:E:20:GLU:O	1:E:48:THR:OG1	2.18	0.60
1:D:20:GLU:O	1:D:48:THR:OG1	2.18	0.60
1:M:20:GLU:O	1:M:48:THR:OG1	2.18	0.60
1:M:53:GLU:OE2	1:M:55:THR:OG1	2.20	0.60
1:A:11:ASN:HD22	1:C:40:ILE:HG12	1.66	0.60
1:H:20:GLU:O	1:H:48:THR:OG1	2.18	0.60
1:A:9:PHE:HA	1:C:38:VAL:HG11	1.83	0.59
1:E:53:GLU:OE2	1:E:55:THR:OG1	2.20	0.59
1:J:20:GLU:O	1:J:48:THR:OG1	2.18	0.59
1:H:53:GLU:OE2	1:H:55:THR:OG1	2.20	0.59
1:O:53:GLU:OE2	1:O:55:THR:OG1	2.20	0.59
1:G:53:GLU:OE2	1:G:55:THR:OG1	2.20	0.59
1:L:53:GLU:OE2	1:L:55:THR:OG1	2.20	0.59

Continued on next page...

Continued from previous page...

Atom-1	Atom-2	Interatomic distance (Å)	Clash overlap (Å)
1:G:40:ILE:HG12	1:K:11:ASN:HD22	1.67	0.59
1:H:40:ILE:HG12	1:M:11:ASN:HD22	1.66	0.59
1:B:53:GLU:OE2	1:B:55:THR:OG1	2.20	0.59
1:B:20:GLU:O	1:B:48:THR:OG1	2.18	0.59
1:O:20:GLU:O	1:O:48:THR:OG1	2.18	0.59
1:F:53:GLU:OE2	1:F:55:THR:OG1	2.20	0.59
1:J:53:GLU:OE2	1:J:55:THR:OG1	2.20	0.59
1:L:20:GLU:O	1:L:48:THR:OG1	2.18	0.59
1:E:11:ASN:ND2	1:M:40:ILE:HG12	2.18	0.59
1:I:53:GLU:OE2	1:I:55:THR:OG1	2.20	0.59
1:G:20:GLU:O	1:G:48:THR:OG1	2.18	0.58
1:D:53:GLU:OE2	1:D:55:THR:OG1	2.20	0.58
1:N:53:GLU:OE2	1:N:55:THR:OG1	2.20	0.58
1:A:53:GLU:OE2	1:A:55:THR:OG1	2.20	0.58
1:I:20:GLU:O	1:I:48:THR:OG1	2.18	0.58
1:C:53:GLU:OE2	1:C:55:THR:OG1	2.20	0.58
1:K:53:GLU:OE2	1:K:55:THR:OG1	2.20	0.58
1:C:20:GLU:O	1:C:48:THR:OG1	2.18	0.57
1:F:20:GLU:O	1:F:48:THR:OG1	2.18	0.56
1:H:38:VAL:HG13	1:H:39:VAL:N	2.15	0.56
1:I:38:VAL:HG13	1:I:39:VAL:N	2.15	0.56
1:N:20:GLU:O	1:N:48:THR:OG1	2.18	0.56
1:A:20:GLU:O	1:A:48:THR:OG1	2.18	0.56
1:E:40:ILE:HG12	1:I:11:ASN:HD22	1.69	0.56
1:E:38:VAL:HG13	1:E:39:VAL:N	2.15	0.56
1:D:40:ILE:HG12	1:H:11:ASN:HD22	1.70	0.56
1:A:40:ILE:HG12	1:B:11:ASN:HD22	1.71	0.56
1:A:11:ASN:ND2	1:C:40:ILE:H	2.03	0.55
1:D:38:VAL:HG13	1:D:39:VAL:N	2.14	0.55
1:M:38:VAL:HG13	1:M:39:VAL:N	2.14	0.55
1:I:10:HIS:HB2	1:I:16:PRO:HA	1.89	0.55
1:M:38:VAL:CG1	1:M:39:VAL:H	2.15	0.55
1:G:10:HIS:HB2	1:G:16:PRO:HA	1.89	0.55
1:I:34:ALA:O	1:O:98:TYR:HE2	1.89	0.55
1:N:38:VAL:HG13	1:N:39:VAL:N	2.15	0.55
1:E:10:HIS:HB2	1:E:16:PRO:HA	1.89	0.55
1:N:10:HIS:HB2	1:N:16:PRO:HA	1.89	0.55
1:F:31:MET:HE1	1:J:103:ILE:HB	1.89	0.54
1:K:10:HIS:HB2	1:K:16:PRO:HA	1.89	0.54
1:O:10:HIS:HB2	1:O:16:PRO:HA	1.89	0.54
1:M:10:HIS:HB2	1:M:16:PRO:HA	1.89	0.54

Continued on next page...

Continued from previous page...

Atom-1	Atom-2	Interatomic distance (Å)	Clash overlap (Å)
1:A:34:ALA:O	1:B:98:TYR:HE2	1.90	0.54
1:E:3:THR:OG1	1:E:93:SER:O	2.25	0.54
1:L:38:VAL:HG13	1:L:39:VAL:N	2.15	0.54
1:C:9:PHE:HA	1:J:38:VAL:HG11	1.88	0.54
1:H:105:MET:SD	1:H:105:MET:N	2.81	0.54
1:L:105:MET:SD	1:L:105:MET:N	2.81	0.54
1:C:10:HIS:HB2	1:C:16:PRO:HA	1.89	0.54
1:E:105:MET:SD	1:E:105:MET:N	2.81	0.54
1:H:10:HIS:HB2	1:H:16:PRO:HA	1.89	0.54
1:N:105:MET:SD	1:N:105:MET:N	2.81	0.54
1:G:105:MET:SD	1:G:105:MET:N	2.81	0.54
1:B:105:MET:SD	1:B:105:MET:N	2.81	0.54
1:F:10:HIS:HB2	1:F:16:PRO:HA	1.89	0.54
1:O:105:MET:SD	1:O:105:MET:N	2.81	0.54
1:A:105:MET:SD	1:A:105:MET:N	2.81	0.54
1:C:105:MET:N	1:C:105:MET:SD	2.81	0.54
1:I:105:MET:SD	1:I:105:MET:N	2.81	0.54
1:B:10:HIS:HB2	1:B:16:PRO:HA	1.89	0.53
1:B:40:ILE:HG12	1:L:11:ASN:HD22	1.71	0.53
1:B:40:ILE:H	1:L:11:ASN:ND2	2.05	0.53
1:L:10:HIS:HB2	1:L:16:PRO:HA	1.89	0.53
1:D:10:HIS:HB2	1:D:16:PRO:HA	1.89	0.53
1:F:98:TYR:HE2	1:N:34:ALA:O	1.92	0.53
1:M:105:MET:SD	1:M:105:MET:N	2.81	0.53
1:A:10:HIS:HB2	1:A:16:PRO:HA	1.89	0.53
1:D:105:MET:SD	1:D:105:MET:N	2.81	0.53
1:J:105:MET:SD	1:J:105:MET:N	2.81	0.53
1:J:10:HIS:HB2	1:J:16:PRO:HA	1.89	0.53
1:K:105:MET:SD	1:K:105:MET:N	2.81	0.53
1:B:34:ALA:O	1:L:98:TYR:HE2	1.92	0.53
1:F:38:VAL:HG11	1:J:9:PHE:HA	1.90	0.53
1:F:105:MET:SD	1:F:105:MET:N	2.81	0.53
1:K:38:VAL:HG13	1:K:39:VAL:N	2.15	0.53
1:D:34:ALA:O	1:H:98:TYR:HE2	1.92	0.53
1:K:29:PRO:HD3	1:N:84:TYR:CD1	2.44	0.53
1:B:38:VAL:HG13	1:B:39:VAL:N	2.14	0.53
1:J:38:VAL:CG1	1:J:39:VAL:H	2.15	0.53
1:J:8:THR:OG1	1:J:98:TYR:OH	2.22	0.52
1:G:40:ILE:H	1:K:11:ASN:ND2	2.08	0.52
1:C:11:ASN:ND2	1:J:40:ILE:HG12	2.24	0.52
1:K:38:VAL:HG21	1:N:9:PHE:CD2	2.45	0.52

Continued on next page...

Continued from previous page...

Atom-1	Atom-2	Interatomic distance (Å)	Clash overlap (Å)
1:G:38:VAL:HG13	1:G:39:VAL:N	2.15	0.52
1:G:11:ASN:ND2	1:O:40:ILE:H	2.08	0.52
1:A:38:VAL:CG1	1:A:39:VAL:H	2.15	0.52
1:A:40:ILE:H	1:B:11:ASN:ND2	2.08	0.52
1:E:103:ILE:HB	1:M:31:MET:HE1	1.92	0.52
1:E:44:TYR:OH	1:E:56:MET:HE3	2.10	0.52
1:F:44:TYR:OH	1:F:56:MET:HE3	2.10	0.52
1:G:9:PHE:HA	1:O:38:VAL:HG11	1.90	0.52
1:M:44:TYR:OH	1:M:56:MET:HE3	2.10	0.52
1:B:44:TYR:OH	1:B:56:MET:HE3	2.10	0.51
1:F:34:ALA:O	1:J:98:TYR:HE2	1.93	0.51
1:I:44:TYR:OH	1:I:56:MET:HE3	2.10	0.51
1:J:44:TYR:OH	1:J:56:MET:HE3	2.10	0.51
1:L:44:TYR:OH	1:L:56:MET:HE3	2.10	0.51
1:A:38:VAL:HG13	1:A:39:VAL:N	2.14	0.51
1:O:38:VAL:HG13	1:O:39:VAL:N	2.14	0.51
1:O:44:TYR:OH	1:O:56:MET:HE3	2.10	0.51
1:K:26:LEU:HB3	1:K:41:PRO:HA	1.93	0.51
1:A:26:LEU:HB3	1:A:41:PRO:HA	1.93	0.51
1:C:26:LEU:HB3	1:C:41:PRO:HA	1.93	0.51
1:F:26:LEU:HB3	1:F:41:PRO:HA	1.93	0.51
1:F:38:VAL:HG13	1:F:39:VAL:N	2.15	0.51
1:H:44:TYR:OH	1:H:56:MET:HE3	2.10	0.51
1:C:38:VAL:HG13	1:C:39:VAL:N	2.14	0.51
1:D:38:VAL:HG11	1:H:9:PHE:HA	1.91	0.51
1:N:26:LEU:HB3	1:N:41:PRO:HA	1.93	0.51
1:N:44:TYR:OH	1:N:56:MET:HE3	2.10	0.51
1:A:44:TYR:OH	1:A:56:MET:HE3	2.10	0.51
1:D:44:TYR:OH	1:D:56:MET:HE3	2.10	0.51
1:G:44:TYR:OH	1:G:56:MET:HE3	2.10	0.51
1:J:26:LEU:HB3	1:J:41:PRO:HA	1.93	0.51
1:O:26:LEU:HB3	1:O:41:PRO:HA	1.93	0.51
1:B:26:LEU:HB3	1:B:41:PRO:HA	1.93	0.51
1:G:26:LEU:HB3	1:G:41:PRO:HA	1.93	0.51
1:J:38:VAL:HG13	1:J:39:VAL:N	2.15	0.51
1:L:26:LEU:HB3	1:L:41:PRO:HA	1.93	0.51
1:I:26:LEU:HB3	1:I:41:PRO:HA	1.93	0.50
1:C:44:TYR:OH	1:C:56:MET:HE3	2.10	0.50
1:K:44:TYR:OH	1:K:56:MET:HE3	2.10	0.50
1:D:26:LEU:HB3	1:D:41:PRO:HA	1.93	0.50
1:D:3:THR:OG1	1:D:93:SER:O	2.25	0.50

Continued on next page...

Continued from previous page...

Atom-1	Atom-2	Interatomic distance (Å)	Clash overlap (Å)
1:F:38:VAL:CG1	1:F:39:VAL:H	2.15	0.50
1:M:26:LEU:HB3	1:M:41:PRO:HA	1.93	0.50
1:D:38:VAL:CG1	1:D:39:VAL:H	2.15	0.50
1:E:26:LEU:HB3	1:E:41:PRO:HA	1.93	0.50
1:H:26:LEU:HB3	1:H:41:PRO:HA	1.93	0.50
1:K:38:VAL:CG1	1:K:39:VAL:H	2.15	0.50
1:M:44:TYR:HD2	1:M:45:GLU:HB2	1.77	0.50
1:D:31:MET:HE1	1:H:103:ILE:HB	1.93	0.49
1:G:3:THR:OG1	1:G:93:SER:O	2.25	0.49
1:L:44:TYR:HD2	1:L:45:GLU:HB2	1.77	0.49
1:D:44:TYR:HD2	1:D:45:GLU:HB2	1.77	0.49
1:E:11:ASN:HD22	1:M:40:ILE:HG12	1.76	0.49
1:A:59:GLU:HG3	1:A:65:TYR:HE2	1.78	0.49
1:B:44:TYR:HD2	1:B:45:GLU:HB2	1.77	0.49
1:K:59:GLU:HG3	1:K:65:TYR:HE2	1.78	0.49
1:O:59:GLU:HG3	1:O:65:TYR:HE2	1.78	0.49
1:C:38:VAL:CG1	1:C:39:VAL:H	2.15	0.49
1:C:59:GLU:HG3	1:C:65:TYR:HE2	1.78	0.49
1:G:59:GLU:HG3	1:G:65:TYR:HE2	1.78	0.49
1:H:44:TYR:HD2	1:H:45:GLU:HB2	1.77	0.49
1:O:44:TYR:HD2	1:O:45:GLU:HB2	1.77	0.49
1:H:59:GLU:HG3	1:H:65:TYR:HE2	1.78	0.49
1:L:38:VAL:CG1	1:L:39:VAL:H	2.15	0.49
1:M:59:GLU:HG3	1:M:65:TYR:HE2	1.78	0.49
1:F:59:GLU:HG3	1:F:65:TYR:HE2	1.78	0.49
1:N:38:VAL:CG1	1:N:39:VAL:H	2.15	0.49
1:A:44:TYR:HD2	1:A:45:GLU:HB2	1.77	0.49
1:H:38:VAL:HG11	1:M:9:PHE:HA	1.94	0.49
1:I:59:GLU:HG3	1:I:65:TYR:HE2	1.78	0.49
1:B:59:GLU:HG3	1:B:65:TYR:HE2	1.78	0.49
1:N:59:GLU:HG3	1:N:65:TYR:HE2	1.78	0.49
1:E:12:PRO:O	1:E:15:SER:N	2.39	0.48
1:H:74:ASP:OD1	1:H:75:GLU:N	2.46	0.48
1:I:44:TYR:HD2	1:I:45:GLU:HB2	1.77	0.48
1:E:59:GLU:HG3	1:E:65:TYR:HE2	1.78	0.48
1:J:8:THR:HG1	1:J:98:TYR:HH	1.52	0.48
1:C:44:TYR:HD2	1:C:45:GLU:HB2	1.77	0.48
1:D:9:PHE:HA	1:L:38:VAL:HG11	1.95	0.48
1:D:59:GLU:HG3	1:D:65:TYR:HE2	1.78	0.48
1:E:44:TYR:HD2	1:E:45:GLU:HB2	1.77	0.48
1:O:38:VAL:CG1	1:O:39:VAL:H	2.15	0.48

Continued on next page...

Continued from previous page...

Atom-1	Atom-2	Interatomic distance (Å)	Clash overlap (Å)
1:J:59:GLU:HG3	1:J:65:TYR:HE2	1.78	0.48
1:J:74:ASP:OD1	1:J:75:GLU:N	2.46	0.48
1:L:59:GLU:HG3	1:L:65:TYR:HE2	1.78	0.48
1:N:44:TYR:HD2	1:N:45:GLU:HB2	1.77	0.48
1:I:3:THR:OG1	1:I:93:SER:O	2.25	0.48
1:I:74:ASP:OD1	1:I:75:GLU:N	2.46	0.48
1:B:12:PRO:O	1:B:15:SER:N	2.39	0.48
1:E:9:PHE:HA	1:M:38:VAL:HG11	1.94	0.48
1:N:74:ASP:OD1	1:N:75:GLU:N	2.46	0.48
1:A:26:LEU:HD13	1:A:65:TYR:HE1	1.79	0.48
1:B:74:ASP:OD1	1:B:75:GLU:N	2.46	0.48
1:C:26:LEU:HD13	1:C:65:TYR:HE1	1.79	0.48
1:E:38:VAL:CG1	1:E:39:VAL:H	2.15	0.48
1:A:74:ASP:OD1	1:A:75:GLU:N	2.46	0.48
1:C:70:ILE:HD12	1:J:40:ILE:HD12	1.95	0.48
1:F:44:TYR:HD2	1:F:45:GLU:HB2	1.77	0.48
1:I:40:ILE:HG12	1:O:11:ASN:HD22	1.76	0.48
1:J:44:TYR:HD2	1:J:45:GLU:HB2	1.77	0.48
1:M:74:ASP:OD1	1:M:75:GLU:N	2.46	0.48
1:O:74:ASP:OD1	1:O:75:GLU:N	2.46	0.48
1:B:26:LEU:HD13	1:B:65:TYR:HE1	1.79	0.47
1:G:44:TYR:HD2	1:G:45:GLU:HB2	1.77	0.47
1:K:74:ASP:OD1	1:K:75:GLU:N	2.46	0.47
1:K:40:ILE:H	1:N:11:ASN:HD22	1.61	0.47
1:K:44:TYR:HD2	1:K:45:GLU:HB2	1.77	0.47
1:F:74:ASP:OD1	1:F:75:GLU:N	2.46	0.47
1:H:26:LEU:HD13	1:H:65:TYR:HE1	1.79	0.47
1:E:31:MET:HE1	1:I:103:ILE:HB	1.96	0.47
1:F:40:ILE:HG12	1:J:11:ASN:HD22	1.78	0.47
1:K:58:LEU:HD22	1:N:13:ASP:CA	2.44	0.47
1:C:12:PRO:O	1:C:15:SER:N	2.39	0.47
1:E:26:LEU:HD13	1:E:65:TYR:HE1	1.79	0.47
1:J:26:LEU:HD13	1:J:65:TYR:HE1	1.79	0.47
1:L:74:ASP:OD1	1:L:75:GLU:N	2.46	0.47
1:N:26:LEU:HD13	1:N:65:TYR:HE1	1.79	0.47
1:C:8:THR:H	1:C:98:TYR:HE1	1.63	0.47
1:G:74:ASP:OD1	1:G:75:GLU:N	2.46	0.47
1:I:26:LEU:HD13	1:I:65:TYR:HE1	1.79	0.47
1:I:40:ILE:H	1:O:11:ASN:ND2	2.13	0.47
1:K:58:LEU:HB2	1:N:13:ASP:HA	1.95	0.47
1:L:8:THR:H	1:L:98:TYR:HE1	1.63	0.47

Continued on next page...

Continued from previous page...

Atom-1	Atom-2	Interatomic distance (Å)	Clash overlap (Å)
1:L:26:LEU:HD13	1:L:65:TYR:HE1	1.79	0.47
1:M:8:THR:H	1:M:98:TYR:HE1	1.63	0.47
1:O:26:LEU:HD13	1:O:65:TYR:HE1	1.79	0.47
1:I:8:THR:H	1:I:98:TYR:HE1	1.63	0.47
1:F:13:ASP:N	1:N:58:LEU:HD22	2.30	0.47
1:N:4:LYS:HE2	1:N:96:PRO:HB3	1.97	0.47
1:N:12:PRO:O	1:N:15:SER:N	2.40	0.47
1:D:26:LEU:HD13	1:D:65:TYR:HE1	1.79	0.47
1:E:4:LYS:HE2	1:E:96:PRO:HB3	1.97	0.47
1:G:4:LYS:HE2	1:G:96:PRO:HB3	1.97	0.47
1:H:4:LYS:HE2	1:H:96:PRO:HB3	1.97	0.47
1:H:8:THR:H	1:H:98:TYR:HE1	1.63	0.47
1:M:12:PRO:O	1:M:15:SER:N	2.39	0.47
1:M:26:LEU:HD13	1:M:65:TYR:HE1	1.79	0.47
1:C:11:ASN:HD22	1:J:40:ILE:HG12	1.80	0.46
1:B:8:THR:H	1:B:98:TYR:HE1	1.63	0.46
1:I:4:LYS:HE2	1:I:96:PRO:HB3	1.97	0.46
1:O:8:THR:H	1:O:98:TYR:HE1	1.63	0.46
1:B:38:VAL:CG1	1:B:39:VAL:H	2.15	0.46
1:D:4:LYS:HE2	1:D:96:PRO:HB3	1.97	0.46
1:I:31:MET:HE1	1:O:103:ILE:HB	1.97	0.46
1:M:4:LYS:HE2	1:M:96:PRO:HB3	1.97	0.46
1:O:4:LYS:HE2	1:O:96:PRO:HB3	1.98	0.46
1:F:3:THR:OG1	1:F:93:SER:O	2.25	0.46
1:F:8:THR:H	1:F:98:TYR:HE1	1.63	0.46
1:G:26:LEU:HD13	1:G:65:TYR:HE1	1.79	0.46
1:K:8:THR:H	1:K:98:TYR:HE1	1.63	0.46
1:L:4:LYS:HE2	1:L:96:PRO:HB3	1.97	0.46
1:E:74:ASP:OD1	1:E:75:GLU:N	2.46	0.46
1:F:26:LEU:HD13	1:F:65:TYR:HE1	1.79	0.46
1:I:38:VAL:CG1	1:I:39:VAL:H	2.15	0.46
1:K:4:LYS:HE2	1:K:96:PRO:HB3	1.97	0.46
1:B:4:LYS:HE2	1:B:96:PRO:HB3	1.98	0.46
1:C:74:ASP:OD1	1:C:75:GLU:N	2.46	0.46
1:E:98:TYR:HE2	1:M:34:ALA:O	1.99	0.46
1:G:8:THR:H	1:G:98:TYR:HE1	1.63	0.46
1:E:38:VAL:HG11	1:I:9:PHE:HA	1.96	0.46
1:F:4:LYS:HE2	1:F:96:PRO:HB3	1.97	0.46
1:H:38:VAL:CG1	1:H:39:VAL:H	2.15	0.46
1:A:8:THR:H	1:A:98:TYR:HE1	1.63	0.46
1:D:74:ASP:OD1	1:D:75:GLU:N	2.46	0.46

Continued on next page...

Continued from previous page...

Atom-1	Atom-2	Interatomic distance (Å)	Clash overlap (Å)
1:J:12:PRO:O	1:J:15:SER:N	2.39	0.46
1:K:3:THR:OG1	1:K:93:SER:O	2.25	0.46
1:A:4:LYS:HE2	1:A:96:PRO:HB3	1.97	0.46
1:J:8:THR:H	1:J:98:TYR:HE1	1.63	0.46
1:K:26:LEU:HD13	1:K:65:TYR:HE1	1.79	0.46
1:N:8:THR:H	1:N:98:TYR:HE1	1.63	0.46
1:A:12:PRO:O	1:A:15:SER:N	2.39	0.45
1:E:8:THR:H	1:E:98:TYR:HE1	1.63	0.45
1:K:40:ILE:HG12	1:N:11:ASN:ND2	2.31	0.45
1:C:4:LYS:HE2	1:C:96:PRO:HB3	1.97	0.45
1:D:8:THR:H	1:D:98:TYR:HE1	1.63	0.45
1:J:4:LYS:HE2	1:J:96:PRO:HB3	1.98	0.45
1:G:38:VAL:CG1	1:G:39:VAL:H	2.15	0.45
1:I:49:ASP:OD1	1:I:52:GLY:N	2.50	0.45
1:K:12:PRO:O	1:K:15:SER:N	2.39	0.45
1:M:49:ASP:OD1	1:M:52:GLY:N	2.50	0.45
1:F:9:PHE:HA	1:N:38:VAL:HG11	1.98	0.44
1:E:61:SER:OG	1:E:62:THR:N	2.50	0.44
1:I:61:SER:OG	1:I:62:THR:N	2.50	0.44
1:J:3:THR:OG1	1:J:93:SER:O	2.25	0.44
1:O:49:ASP:OD1	1:O:52:GLY:N	2.50	0.44
1:A:98:TYR:HE2	1:C:34:ALA:O	1.99	0.44
1:D:49:ASP:OD1	1:D:52:GLY:N	2.50	0.44
1:E:48:THR:O	1:E:49:ASP:OD1	2.36	0.44
1:E:49:ASP:OD1	1:E:52:GLY:N	2.50	0.44
1:G:49:ASP:OD1	1:G:52:GLY:N	2.50	0.44
1:H:49:ASP:OD1	1:H:52:GLY:N	2.50	0.44
1:K:49:ASP:OD1	1:K:52:GLY:N	2.50	0.44
1:A:48:THR:O	1:A:49:ASP:OD1	2.36	0.44
1:D:61:SER:OG	1:D:62:THR:N	2.50	0.44
1:H:31:MET:HE1	1:M:103:ILE:HB	1.98	0.44
1:C:48:THR:O	1:C:49:ASP:OD1	2.36	0.44
1:C:49:ASP:OD1	1:C:52:GLY:N	2.50	0.44
1:I:48:THR:O	1:I:49:ASP:OD1	2.36	0.44
1:J:48:THR:O	1:J:49:ASP:OD1	2.36	0.44
1:M:48:THR:O	1:M:49:ASP:OD1	2.36	0.44
1:B:48:THR:O	1:B:49:ASP:OD1	2.36	0.44
1:B:67:VAL:O	1:B:85:THR:OG1	2.25	0.44
1:C:11:ASN:ND2	1:J:40:ILE:H	2.16	0.44
1:H:48:THR:O	1:H:49:ASP:OD1	2.36	0.44
1:J:49:ASP:OD1	1:J:52:GLY:N	2.50	0.44

Continued on next page...

Continued from previous page...

Atom-1	Atom-2	Interatomic distance (Å)	Clash overlap (Å)
1:L:49:ASP:OD1	1:L:52:GLY:N	2.50	0.44
1:N:61:SER:OG	1:N:62:THR:N	2.50	0.44
1:O:48:THR:O	1:O:49:ASP:OD1	2.36	0.44
1:C:98:TYR:HE2	1:J:34:ALA:O	1.99	0.44
1:F:12:PRO:O	1:F:15:SER:N	2.40	0.44
1:F:48:THR:O	1:F:49:ASP:OD1	2.36	0.44
1:K:10:HIS:O	1:K:10:HIS:CG	2.71	0.44
1:L:48:THR:O	1:L:49:ASP:OD1	2.36	0.44
1:D:11:ASN:ND2	1:L:40:ILE:H	2.15	0.44
1:G:48:THR:O	1:G:49:ASP:OD1	2.36	0.44
1:N:49:ASP:OD1	1:N:52:GLY:N	2.50	0.44
1:D:48:THR:O	1:D:49:ASP:OD1	2.36	0.44
1:F:61:SER:OG	1:F:62:THR:N	2.50	0.44
1:I:40:ILE:HD12	1:O:70:ILE:HD12	2.00	0.44
1:L:61:SER:OG	1:L:62:THR:N	2.50	0.44
1:N:10:HIS:O	1:N:10:HIS:CG	2.71	0.44
1:F:49:ASP:OD1	1:F:52:GLY:N	2.50	0.43
1:G:10:HIS:CG	1:G:10:HIS:O	2.71	0.43
1:K:48:THR:O	1:K:49:ASP:OD1	2.36	0.43
1:H:12:PRO:O	1:H:15:SER:N	2.40	0.43
1:K:26:LEU:HD22	1:K:39:VAL:HG12	2.01	0.43
1:L:26:LEU:HD22	1:L:39:VAL:HG12	2.01	0.43
1:A:49:ASP:OD1	1:A:52:GLY:N	2.50	0.43
1:A:61:SER:OG	1:A:62:THR:N	2.50	0.43
1:B:26:LEU:HD22	1:B:39:VAL:HG12	2.00	0.43
1:B:40:ILE:HD12	1:L:70:ILE:HD12	2.00	0.43
1:C:3:THR:OG1	1:C:93:SER:O	2.25	0.43
1:C:61:SER:OG	1:C:62:THR:N	2.50	0.43
1:D:26:LEU:HD22	1:D:39:VAL:HG12	2.01	0.43
1:E:10:HIS:O	1:E:10:HIS:CG	2.71	0.43
1:G:26:LEU:HD22	1:G:39:VAL:HG12	2.01	0.43
1:M:10:HIS:CG	1:M:10:HIS:O	2.71	0.43
1:M:61:SER:OG	1:M:62:THR:N	2.50	0.43
1:J:61:SER:OG	1:J:62:THR:N	2.50	0.43
1:K:38:VAL:HG21	1:N:9:PHE:HD2	1.83	0.43
1:K:61:SER:OG	1:K:62:THR:N	2.50	0.43
1:N:48:THR:O	1:N:49:ASP:OD1	2.36	0.43
1:G:12:PRO:O	1:G:15:SER:N	2.39	0.43
1:A:3:THR:OG1	1:A:93:SER:O	2.25	0.43
1:B:49:ASP:OD1	1:B:52:GLY:N	2.50	0.43
1:F:10:HIS:CG	1:F:10:HIS:O	2.71	0.43

Continued on next page...

Continued from previous page...

Atom-1	Atom-2	Interatomic distance (Å)	Clash overlap (Å)
1:H:26:LEU:HD22	1:H:39:VAL:HG12	2.01	0.43
1:O:26:LEU:HD22	1:O:39:VAL:HG12	2.01	0.43
1:G:61:SER:OG	1:G:62:THR:N	2.50	0.43
1:O:10:HIS:O	1:O:10:HIS:CG	2.71	0.43
1:H:10:HIS:O	1:H:10:HIS:CG	2.71	0.43
1:I:10:HIS:O	1:I:10:HIS:CG	2.71	0.43
1:A:26:LEU:HD22	1:A:39:VAL:HG12	2.01	0.43
1:B:61:SER:OG	1:B:62:THR:N	2.50	0.43
1:A:31:MET:HE1	1:B:103:ILE:HB	2.01	0.43
1:B:3:THR:OG1	1:B:93:SER:O	2.25	0.43
1:K:40:ILE:H	1:N:11:ASN:HD21	1.61	0.43
1:F:26:LEU:HD22	1:F:39:VAL:HG12	2.00	0.42
1:I:26:LEU:HD22	1:I:39:VAL:HG12	2.00	0.42
1:N:26:LEU:HD22	1:N:39:VAL:HG12	2.01	0.42
1:A:10:HIS:O	1:A:10:HIS:CG	2.71	0.42
1:D:10:HIS:O	1:D:10:HIS:CG	2.71	0.42
1:F:40:ILE:HD12	1:J:70:ILE:HD12	2.02	0.42
1:L:10:HIS:O	1:L:10:HIS:CG	2.71	0.42
1:B:10:HIS:O	1:B:10:HIS:CG	2.71	0.42
1:C:26:LEU:HD22	1:C:39:VAL:HG12	2.01	0.42
1:H:40:ILE:H	1:M:11:ASN:ND2	2.17	0.42
1:L:3:THR:OG1	1:L:93:SER:O	2.25	0.42
1:C:10:HIS:O	1:C:10:HIS:CG	2.71	0.42
1:J:10:HIS:CG	1:J:10:HIS:O	2.71	0.42
1:M:26:LEU:HD22	1:M:39:VAL:HG12	2.01	0.42
1:A:40:ILE:HD12	1:B:70:ILE:HD12	2.01	0.42
1:G:38:VAL:HG21	1:K:9:PHE:CD2	2.54	0.42
1:G:31:MET:HE1	1:K:103:ILE:HB	2.02	0.42
1:E:26:LEU:HD22	1:E:39:VAL:HG12	2.01	0.42
1:J:26:LEU:HD22	1:J:39:VAL:HG12	2.01	0.42
1:B:38:VAL:HG21	1:L:9:PHE:CD2	2.55	0.41
1:E:88:PHE:HA	1:E:102:LEU:HG	2.02	0.41
1:O:61:SER:OG	1:O:62:THR:N	2.50	0.41
1:F:70:ILE:HD12	1:N:40:ILE:HD12	2.02	0.41
1:L:12:PRO:O	1:L:15:SER:N	2.39	0.41
1:A:78:ASP:OD1	1:A:78:ASP:N	2.47	0.41
1:B:31:MET:HE1	1:L:103:ILE:HB	2.02	0.41
1:C:13:ASP:N	1:J:58:LEU:HD22	2.35	0.41
1:O:88:PHE:HA	1:O:102:LEU:HG	2.02	0.41
1:E:70:ILE:HD12	1:M:40:ILE:HD12	2.03	0.41
1:H:3:THR:OG1	1:H:93:SER:O	2.25	0.41

Continued on next page...

Continued from previous page...

Atom-1	Atom-2	Interatomic distance (Å)	Clash overlap (Å)
1:H:61:SER:OG	1:H:62:THR:N	2.50	0.41
1:A:88:PHE:HA	1:A:102:LEU:HG	2.02	0.41
1:C:88:PHE:HA	1:C:102:LEU:HG	2.02	0.41
1:B:88:PHE:HA	1:B:102:LEU:HG	2.02	0.41
1:E:40:ILE:H	1:I:11:ASN:ND2	2.19	0.41
1:E:87:THR:HG23	1:E:102:LEU:HD12	2.03	0.41
1:H:88:PHE:HA	1:H:102:LEU:HG	2.02	0.41
1:I:87:THR:HG23	1:I:102:LEU:HD12	2.03	0.41
1:K:88:PHE:HA	1:K:102:LEU:HG	2.02	0.41
1:L:87:THR:HG23	1:L:102:LEU:HD12	2.03	0.41
1:M:87:THR:HG23	1:M:102:LEU:HD12	2.03	0.41
1:N:87:THR:HG23	1:N:102:LEU:HD12	2.03	0.41
1:O:87:THR:HG23	1:O:102:LEU:HD12	2.03	0.41
1:D:12:PRO:O	1:D:15:SER:N	2.39	0.41
1:G:87:THR:HG23	1:G:102:LEU:HD12	2.03	0.41
1:H:87:THR:HG23	1:H:102:LEU:HD12	2.03	0.40
1:B:87:THR:HG23	1:B:102:LEU:HD12	2.03	0.40
1:D:87:THR:HG23	1:D:102:LEU:HD12	2.03	0.40
1:I:38:VAL:HG21	1:O:9:PHE:CD2	2.56	0.40
1:J:88:PHE:HA	1:J:102:LEU:HG	2.02	0.40
1:K:87:THR:HG23	1:K:102:LEU:HD12	2.03	0.40
1:B:37:CYS:O	1:B:38:VAL:HB	2.22	0.40
1:H:37:CYS:O	1:H:38:VAL:HB	2.22	0.40
1:I:37:CYS:O	1:I:38:VAL:HB	2.22	0.40
1:C:103:ILE:HB	1:J:31:MET:HE1	2.03	0.40
1:F:88:PHE:HA	1:F:102:LEU:HG	2.02	0.40

There are no symmetry-related clashes.

5.3 Torsion angles

5.3.1 Protein backbone

In the following table, the Percentiles column shows the percent Ramachandran outliers of the chain as a percentile score with respect to all PDB entries followed by that with respect to all EM entries.

The Analysed column shows the number of residues for which the backbone conformation was analysed, and the total number of residues.

Mol	Chain	Analysed	Favoured	Allowed	Outliers	Percentiles	
1	A	103/1090 (9%)	74 (72%)	25 (24%)	4 (4%)	2	18
1	B	103/1090 (9%)	74 (72%)	25 (24%)	4 (4%)	2	18
1	C	103/1090 (9%)	74 (72%)	25 (24%)	4 (4%)	2	18
1	D	103/1090 (9%)	74 (72%)	25 (24%)	4 (4%)	2	18
1	E	103/1090 (9%)	74 (72%)	25 (24%)	4 (4%)	2	18
1	F	103/1090 (9%)	74 (72%)	25 (24%)	4 (4%)	2	18
1	G	103/1090 (9%)	74 (72%)	25 (24%)	4 (4%)	2	18
1	H	103/1090 (9%)	74 (72%)	25 (24%)	4 (4%)	2	18
1	I	103/1090 (9%)	74 (72%)	25 (24%)	4 (4%)	2	18
1	J	103/1090 (9%)	74 (72%)	25 (24%)	4 (4%)	2	18
1	K	103/1090 (9%)	74 (72%)	25 (24%)	4 (4%)	2	18
1	L	103/1090 (9%)	74 (72%)	25 (24%)	4 (4%)	2	18
1	M	103/1090 (9%)	74 (72%)	25 (24%)	4 (4%)	2	18
1	N	103/1090 (9%)	74 (72%)	25 (24%)	4 (4%)	2	18
1	O	103/1090 (9%)	74 (72%)	25 (24%)	4 (4%)	2	18
All	All	1545/16350 (9%)	1110 (72%)	375 (24%)	60 (4%)	2	18

All (60) Ramachandran outliers are listed below:

Mol	Chain	Res	Type
1	A	38	VAL
1	A	47	VAL
1	B	38	VAL
1	B	47	VAL
1	C	38	VAL
1	C	47	VAL
1	D	38	VAL
1	D	47	VAL
1	E	38	VAL
1	E	47	VAL
1	F	38	VAL
1	F	47	VAL
1	G	38	VAL
1	G	47	VAL
1	H	38	VAL
1	H	47	VAL
1	I	38	VAL
1	I	47	VAL

Continued on next page...

Continued from previous page...

Mol	Chain	Res	Type
1	J	38	VAL
1	J	47	VAL
1	K	38	VAL
1	K	47	VAL
1	L	38	VAL
1	L	47	VAL
1	M	38	VAL
1	M	47	VAL
1	N	38	VAL
1	N	47	VAL
1	O	38	VAL
1	O	47	VAL
1	A	99	VAL
1	B	99	VAL
1	C	99	VAL
1	D	99	VAL
1	E	99	VAL
1	F	99	VAL
1	G	99	VAL
1	H	99	VAL
1	I	99	VAL
1	J	99	VAL
1	K	99	VAL
1	L	99	VAL
1	M	99	VAL
1	N	99	VAL
1	O	99	VAL
1	A	39	VAL
1	B	39	VAL
1	C	39	VAL
1	D	39	VAL
1	E	39	VAL
1	F	39	VAL
1	G	39	VAL
1	H	39	VAL
1	I	39	VAL
1	J	39	VAL
1	K	39	VAL
1	L	39	VAL
1	M	39	VAL
1	N	39	VAL
1	O	39	VAL

5.3.2 Protein sidechains ⓘ

In the following table, the Percentiles column shows the percent sidechain outliers of the chain as a percentile score with respect to all PDB entries followed by that with respect to all EM entries.

The Analysed column shows the number of residues for which the sidechain conformation was analysed, and the total number of residues.

Mol	Chain	Analysed	Rotameric	Outliers	Percentiles	
1	A	94/882 (11%)	94 (100%)	0	100	100
1	B	94/882 (11%)	94 (100%)	0	100	100
1	C	94/882 (11%)	94 (100%)	0	100	100
1	D	94/882 (11%)	94 (100%)	0	100	100
1	E	94/882 (11%)	94 (100%)	0	100	100
1	F	94/882 (11%)	94 (100%)	0	100	100
1	G	94/882 (11%)	94 (100%)	0	100	100
1	H	94/882 (11%)	94 (100%)	0	100	100
1	I	94/882 (11%)	94 (100%)	0	100	100
1	J	94/882 (11%)	94 (100%)	0	100	100
1	K	94/882 (11%)	94 (100%)	0	100	100
1	L	94/882 (11%)	94 (100%)	0	100	100
1	M	94/882 (11%)	94 (100%)	0	100	100
1	N	94/882 (11%)	94 (100%)	0	100	100
1	O	94/882 (11%)	94 (100%)	0	100	100
All	All	1410/13230 (11%)	1410 (100%)	0	100	100

There are no protein residues with a non-rotameric sidechain to report.

Sometimes sidechains can be flipped to improve hydrogen bonding and reduce clashes. All (27) such sidechains are listed below:

Mol	Chain	Res	Type
1	A	11	ASN
1	B	11	ASN
1	C	11	ASN
1	D	11	ASN
1	E	10	HIS
1	E	11	ASN
1	E	17	GLN

Continued on next page...

Continued from previous page...

Mol	Chain	Res	Type
1	G	11	ASN
1	H	10	HIS
1	H	11	ASN
1	H	17	GLN
1	I	10	HIS
1	I	11	ASN
1	I	17	GLN
1	J	10	HIS
1	J	11	ASN
1	K	10	HIS
1	K	11	ASN
1	L	11	ASN
1	L	19	ASN
1	M	10	HIS
1	M	11	ASN
1	M	17	GLN
1	N	11	ASN
1	N	17	GLN
1	O	11	ASN
1	O	17	GLN

5.3.3 RNA [i](#)

There are no RNA molecules in this entry.

5.4 Non-standard residues in protein, DNA, RNA chains [i](#)

There are no non-standard protein/DNA/RNA residues in this entry.

5.5 Carbohydrates [i](#)

There are no oligosaccharides in this entry.

5.6 Ligand geometry [i](#)

There are no ligands in this entry.

5.7 Other polymers [i](#)

There are no such residues in this entry.

5.8 Polymer linkage issues [i](#)

There are no chain breaks in this entry.

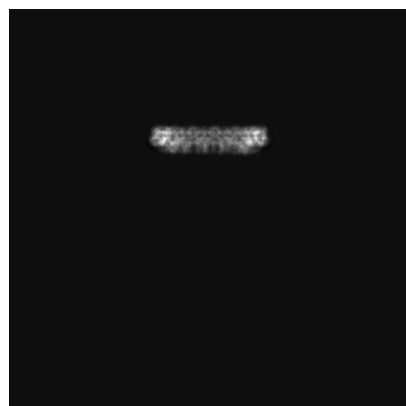
6 Map visualisation [i](#)

This section contains visualisations of the EMDB entry EMD-45776. These allow visual inspection of the internal detail of the map and identification of artifacts.

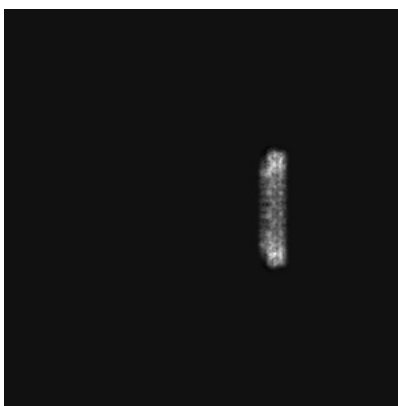
Images derived from a raw map, generated by summing the deposited half-maps, are presented below the corresponding image components of the primary map to allow further visual inspection and comparison with those of the primary map.

6.1 Orthogonal projections [i](#)

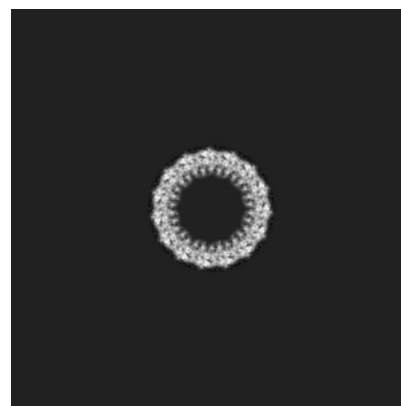
6.1.1 Primary map



X

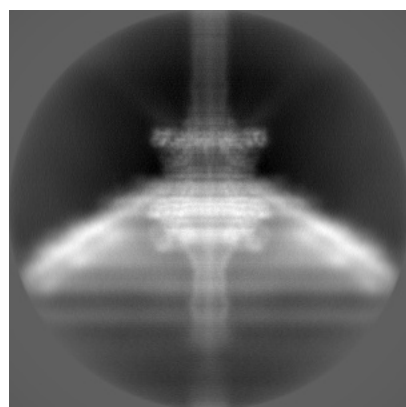


Y

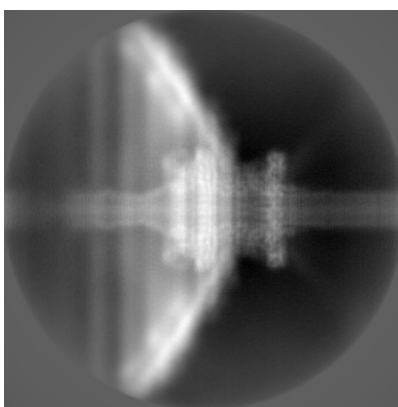


Z

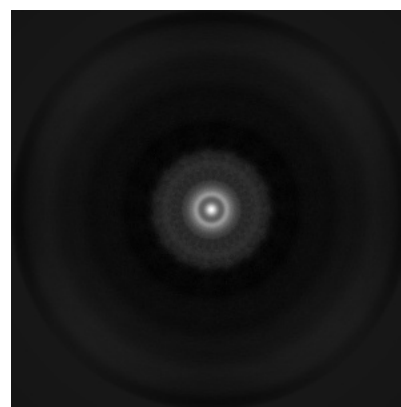
6.1.2 Raw map



X



Y

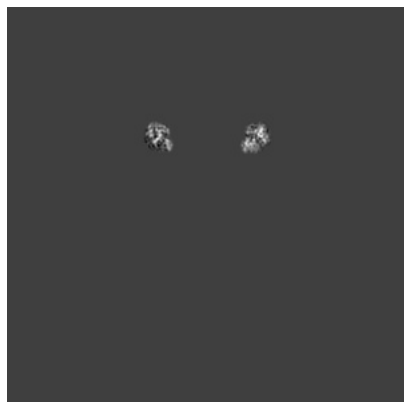


Z

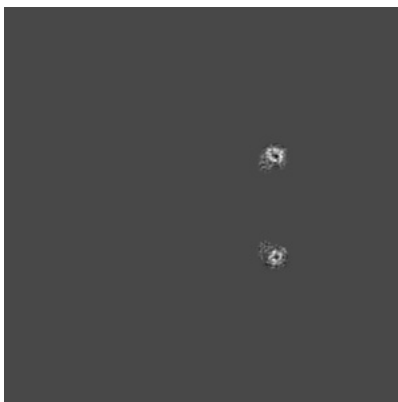
The images above show the map projected in three orthogonal directions.

6.2 Central slices [i](#)

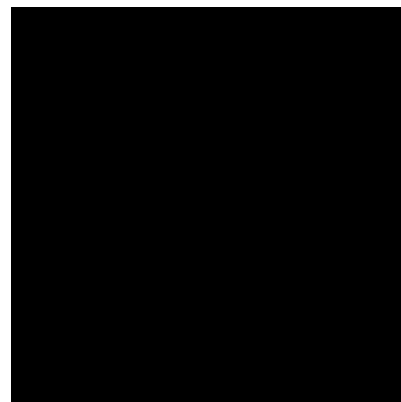
6.2.1 Primary map



X Index: 256

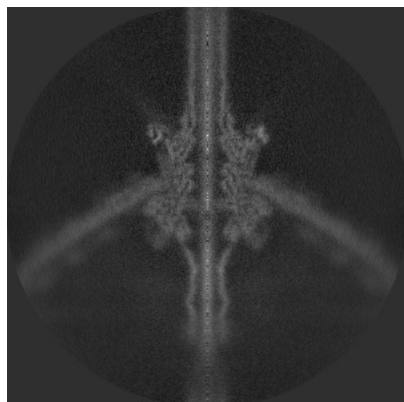


Y Index: 256

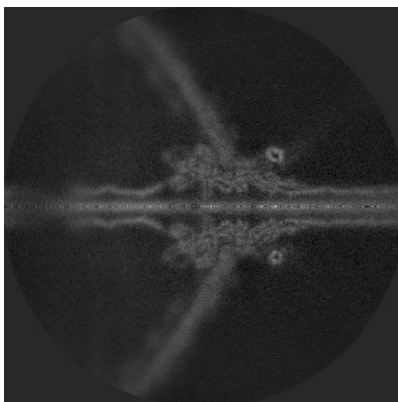


Z Index: 256

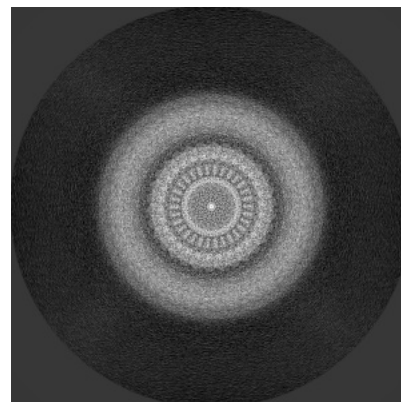
6.2.2 Raw map



X Index: 256



Y Index: 256

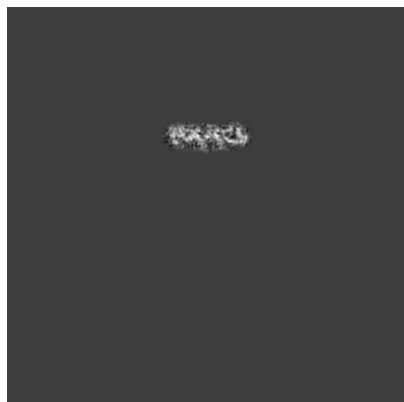


Z Index: 256

The images above show central slices of the map in three orthogonal directions.

6.3 Largest variance slices [i](#)

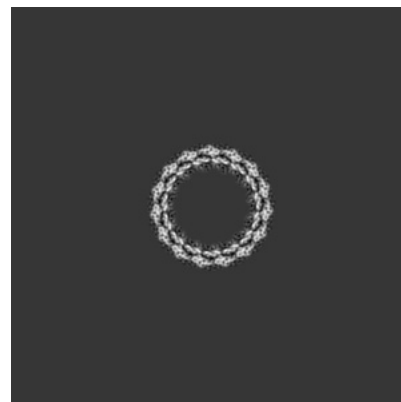
6.3.1 Primary map



X Index: 198

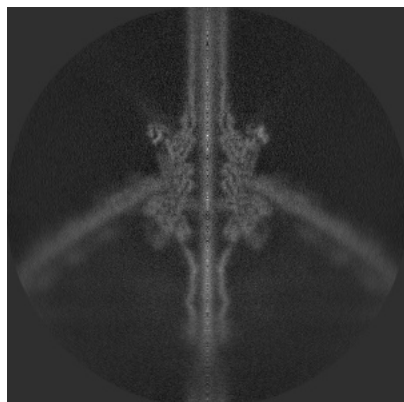


Y Index: 197

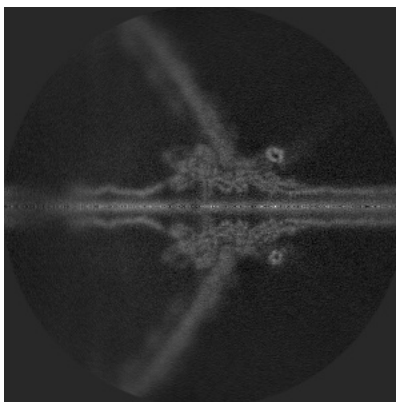


Z Index: 346

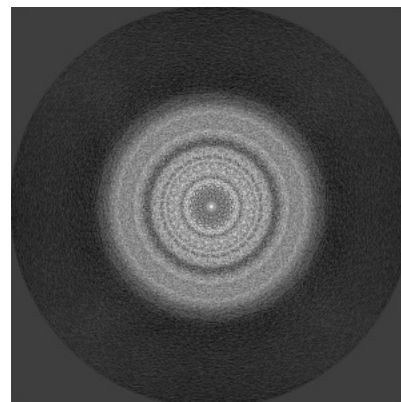
6.3.2 Raw map



X Index: 256



Y Index: 256

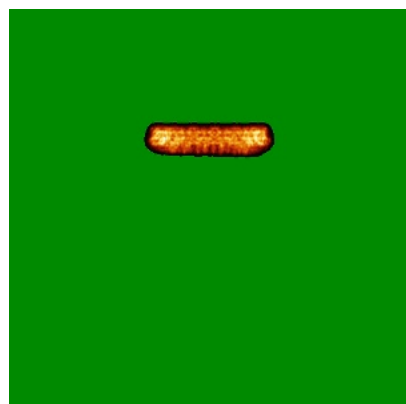


Z Index: 262

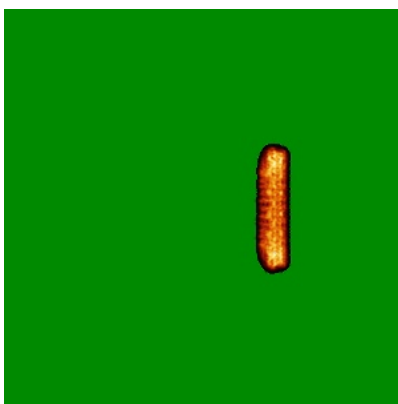
The images above show the largest variance slices of the map in three orthogonal directions.

6.4 Orthogonal standard-deviation projections (False-color) [i](#)

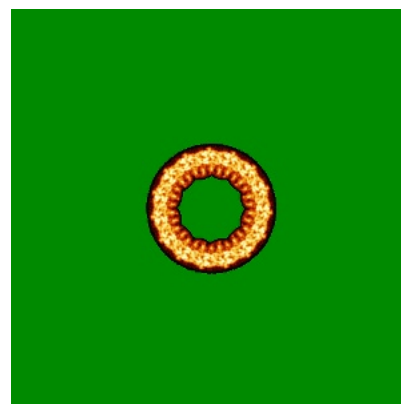
6.4.1 Primary map



X

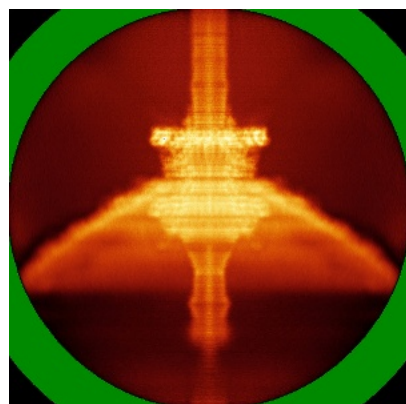


Y

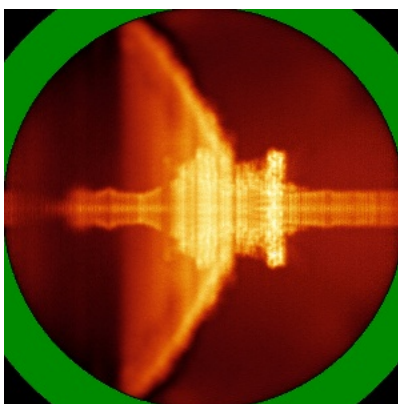


Z

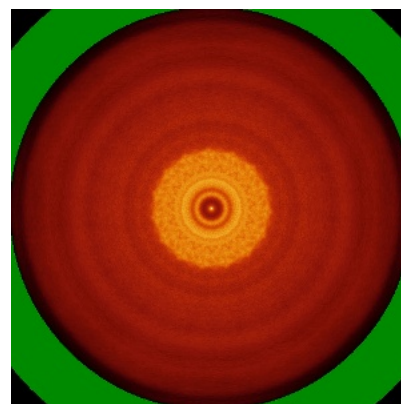
6.4.2 Raw map



X



Y



Z

The images above show the map standard deviation projections with false color in three orthogonal directions. Minimum values are shown in green, max in blue, and dark to light orange shades represent small to large values respectively.

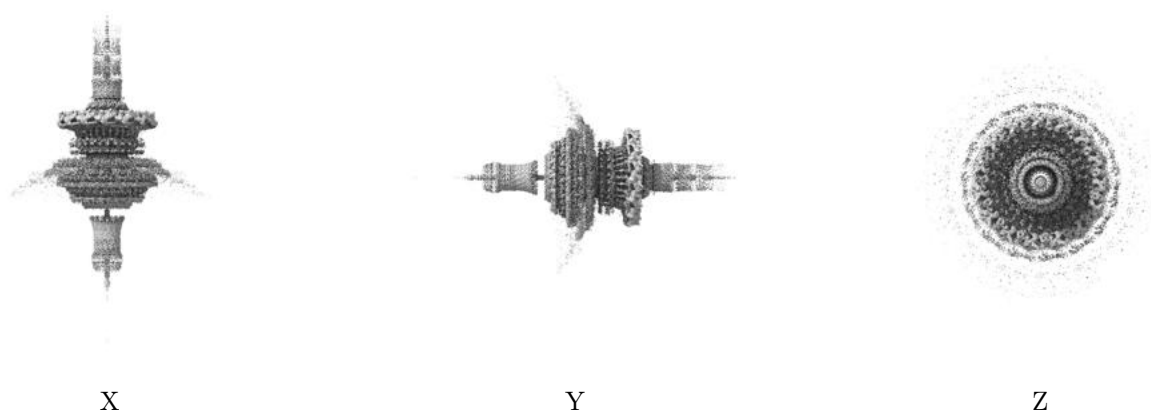
6.5 Orthogonal surface views [i](#)

6.5.1 Primary map



The images above show the 3D surface view of the map at the recommended contour level 0.0018. These images, in conjunction with the slice images, may facilitate assessment of whether an appropriate contour level has been provided.

6.5.2 Raw map



These images show the 3D surface of the raw map. The raw map's contour level was selected so that its surface encloses the same volume as the primary map does at its recommended contour level.

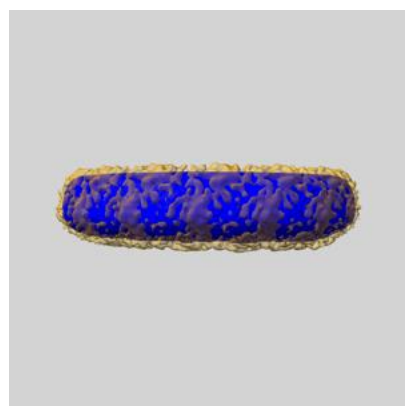
6.6 Mask visualisation [i](#)

This section shows the 3D surface view of the primary map at 50% transparency overlaid with the specified mask at 0% transparency

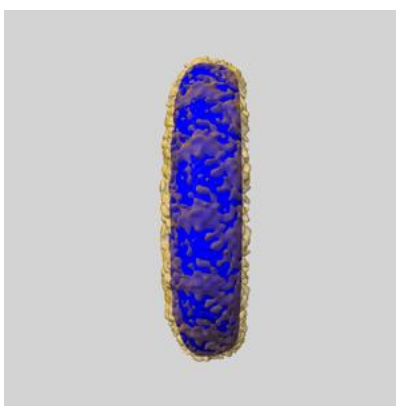
A mask typically either:

- Encompasses the whole structure
- Separates out a domain, a functional unit, a monomer or an area of interest from a larger structure

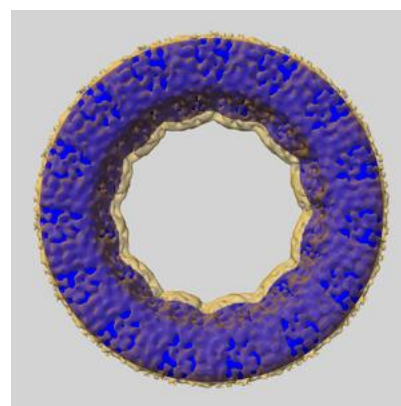
6.6.1 emd_45776_msk_1.map [i](#)



X



Y

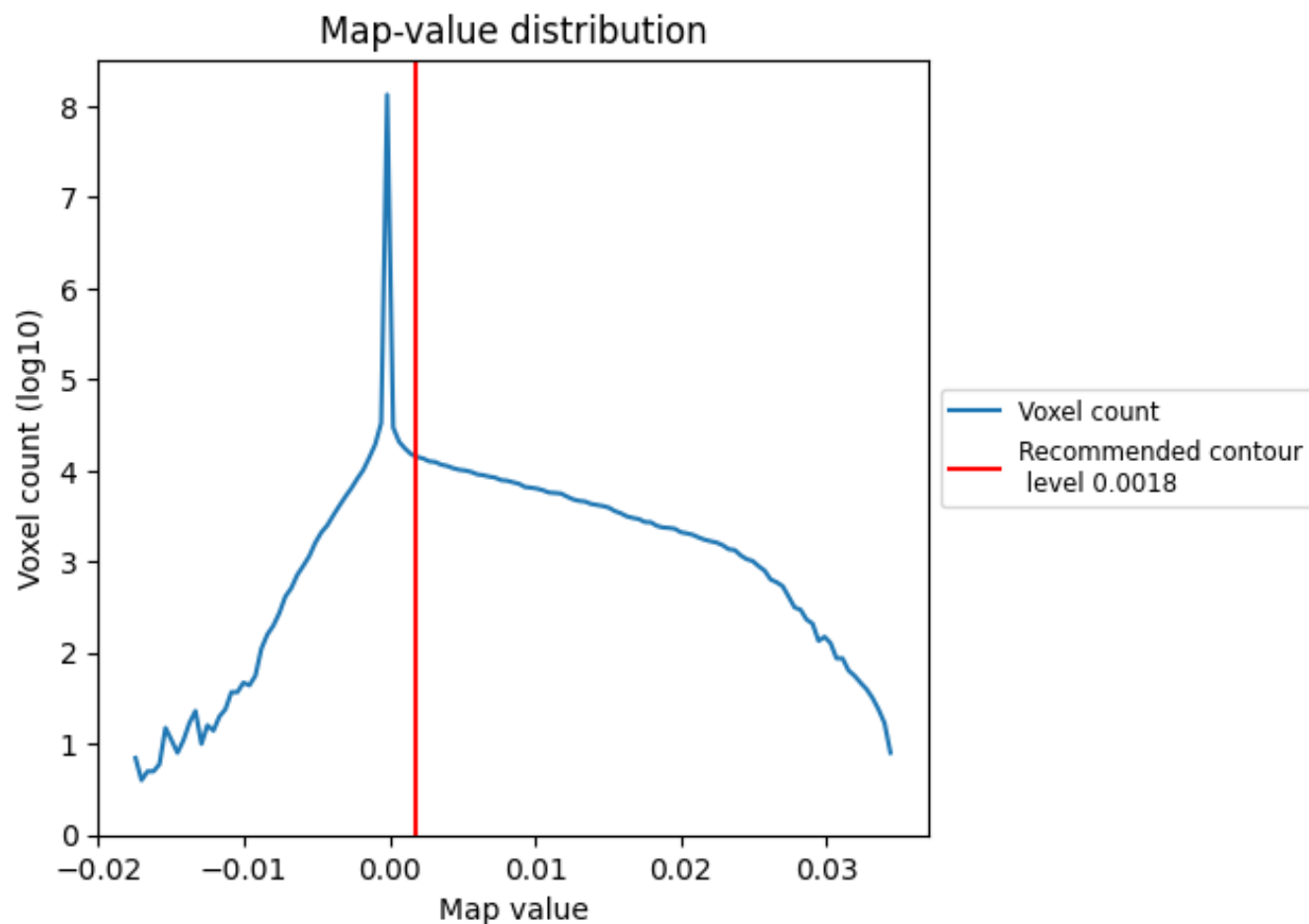


Z

7 Map analysis [i](#)

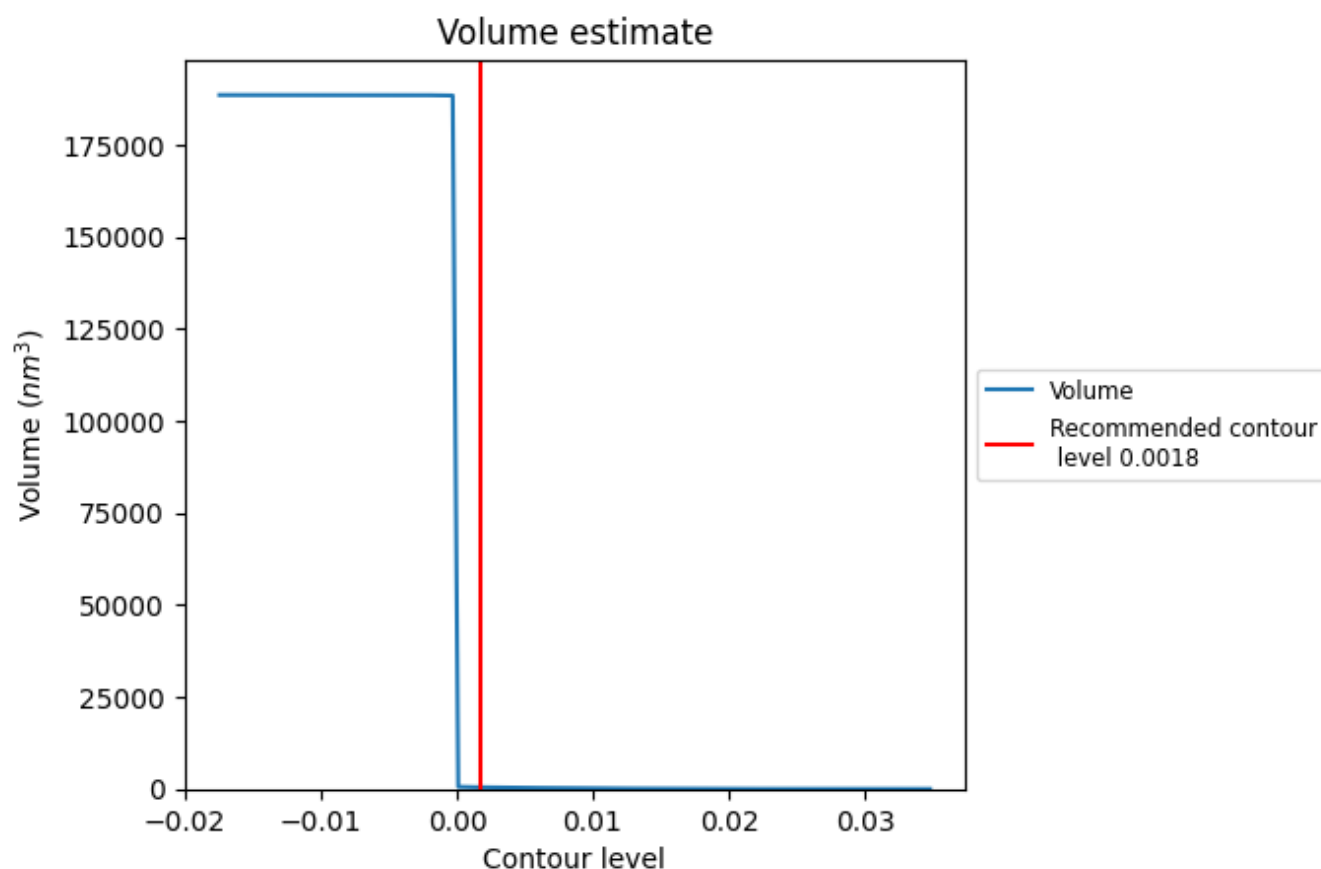
This section contains the results of statistical analysis of the map.

7.1 Map-value distribution [i](#)



The map-value distribution is plotted in 128 intervals along the x-axis. The y-axis is logarithmic. A spike in this graph at zero usually indicates that the volume has been masked.

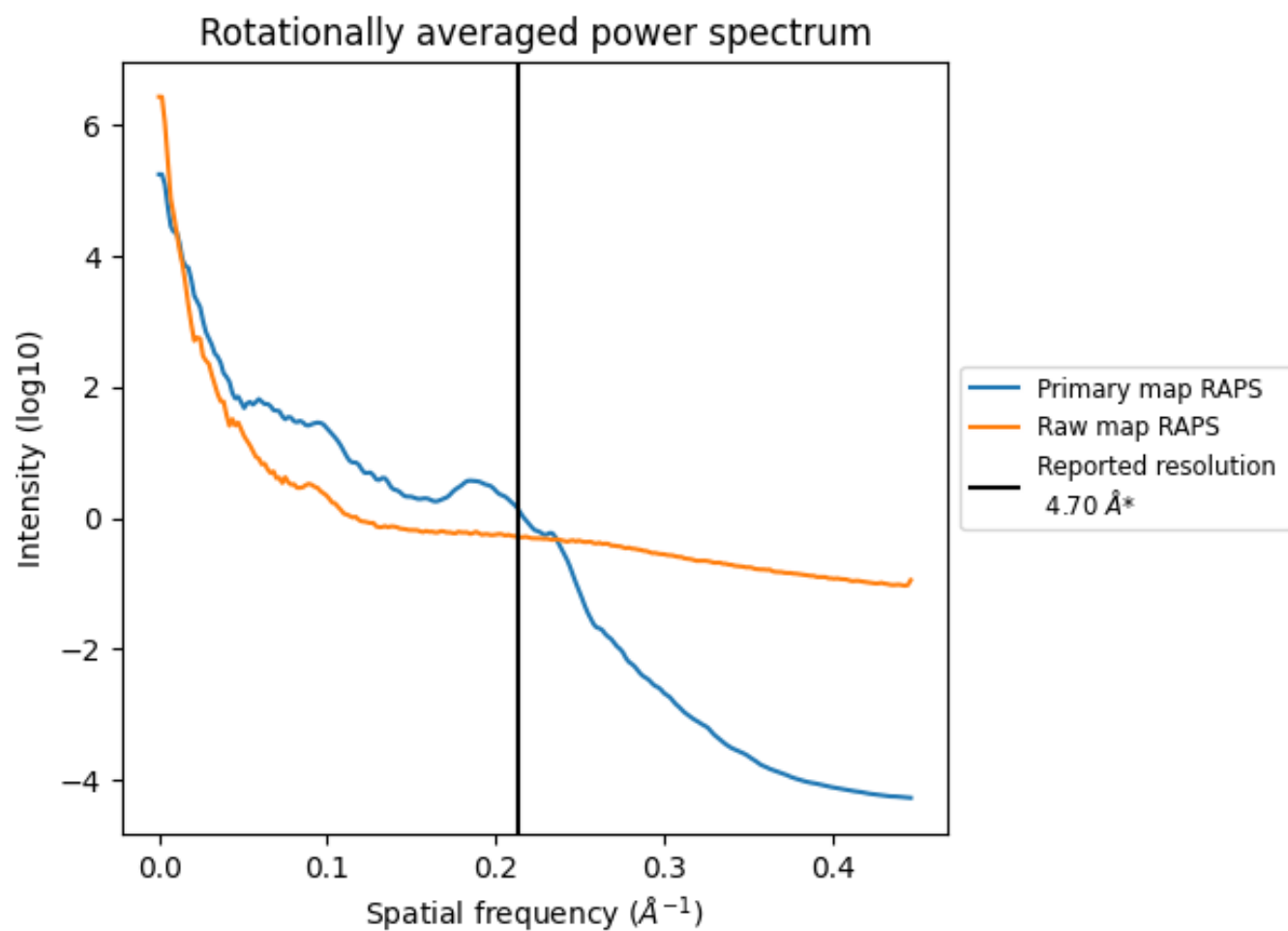
7.2 Volume estimate [i](#)



The volume at the recommended contour level is 451 nm³; this corresponds to an approximate mass of 407 kDa.

The volume estimate graph shows how the enclosed volume varies with the contour level. The recommended contour level is shown as a vertical line and the intersection between the line and the curve gives the volume of the enclosed surface at the given level.

7.3 Rotationally averaged power spectrum ⓘ

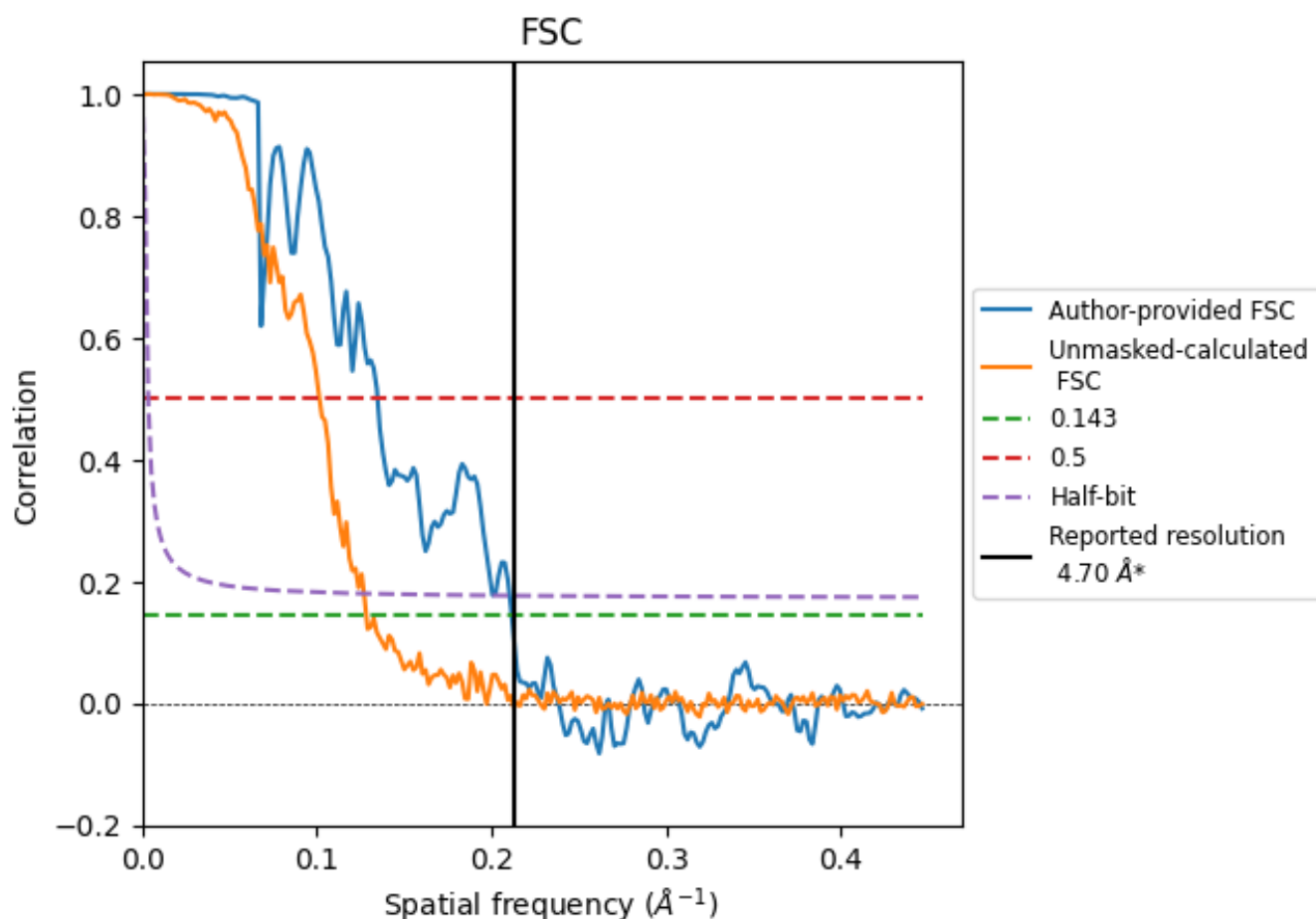


*Reported resolution corresponds to spatial frequency of 0.213 \AA^{-1}

8 Fourier-Shell correlation [i](#)

Fourier-Shell Correlation (FSC) is the most commonly used method to estimate the resolution of single-particle and subtomogram-averaged maps. The shape of the curve depends on the imposed symmetry, mask and whether or not the two 3D reconstructions used were processed from a common reference. The reported resolution is shown as a black line. A curve is displayed for the half-bit criterion in addition to lines showing the 0.143 gold standard cut-off and 0.5 cut-off.

8.1 FSC [i](#)



*Reported resolution corresponds to spatial frequency of 0.213 \AA^{-1}

8.2 Resolution estimates [i](#)

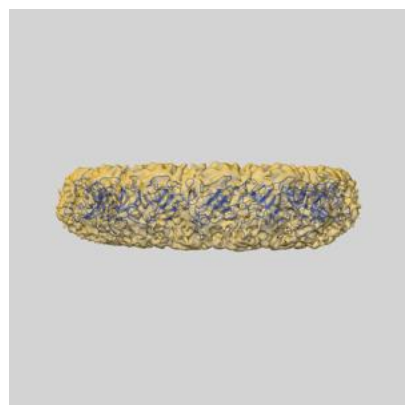
Resolution estimate (Å)	Estimation criterion (FSC cut-off)		
	0.143	0.5	Half-bit
Reported by author	4.70	-	-
Author-provided FSC curve	4.73	7.42	4.76
Unmasked-calculated*	7.79	9.85	7.88

*Resolution estimate based on FSC curve calculated by comparison of deposited half-maps. The value from deposited half-maps intersecting FSC 0.143 CUT-OFF 7.79 differs from the reported value 4.7 by more than 10 %

9 Map-model fit [i](#)

This section contains information regarding the fit between EMDB map EMD-45776 and PDB model 9COD. Per-residue inclusion information can be found in section [3](#) on page [5](#).

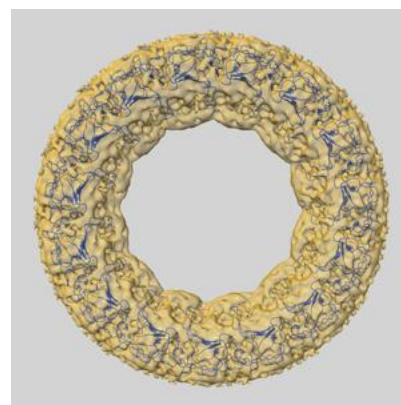
9.1 Map-model overlay [i](#)



X



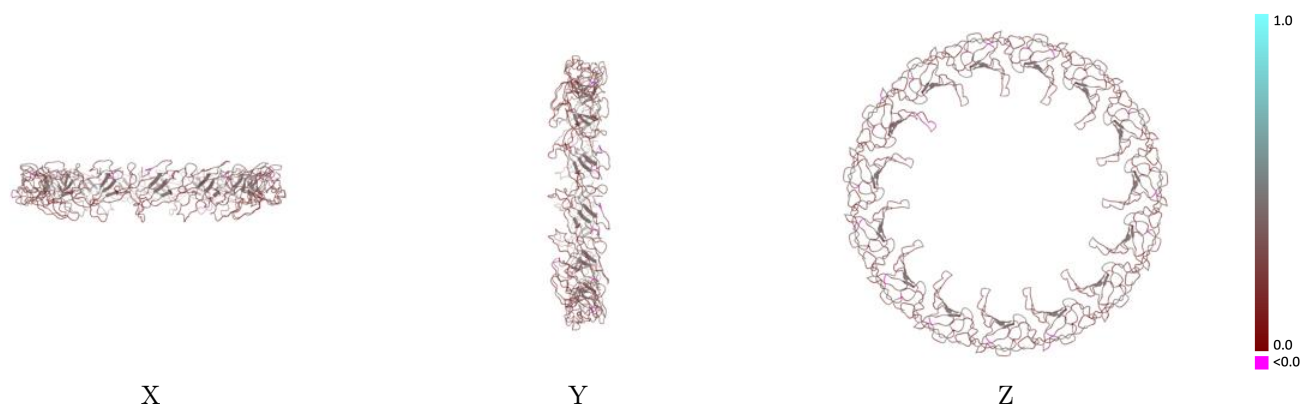
Y



Z

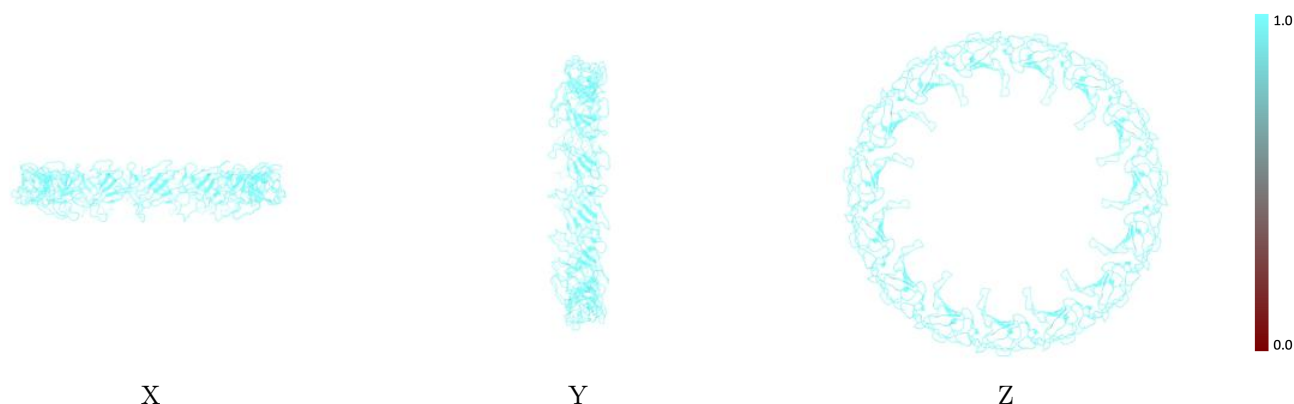
The images above show the 3D surface view of the map at the recommended contour level 0.0018 at 50% transparency in yellow overlaid with a ribbon representation of the model coloured in blue. These images allow for the visual assessment of the quality of fit between the atomic model and the map.

9.2 Q-score mapped to coordinate model [i](#)



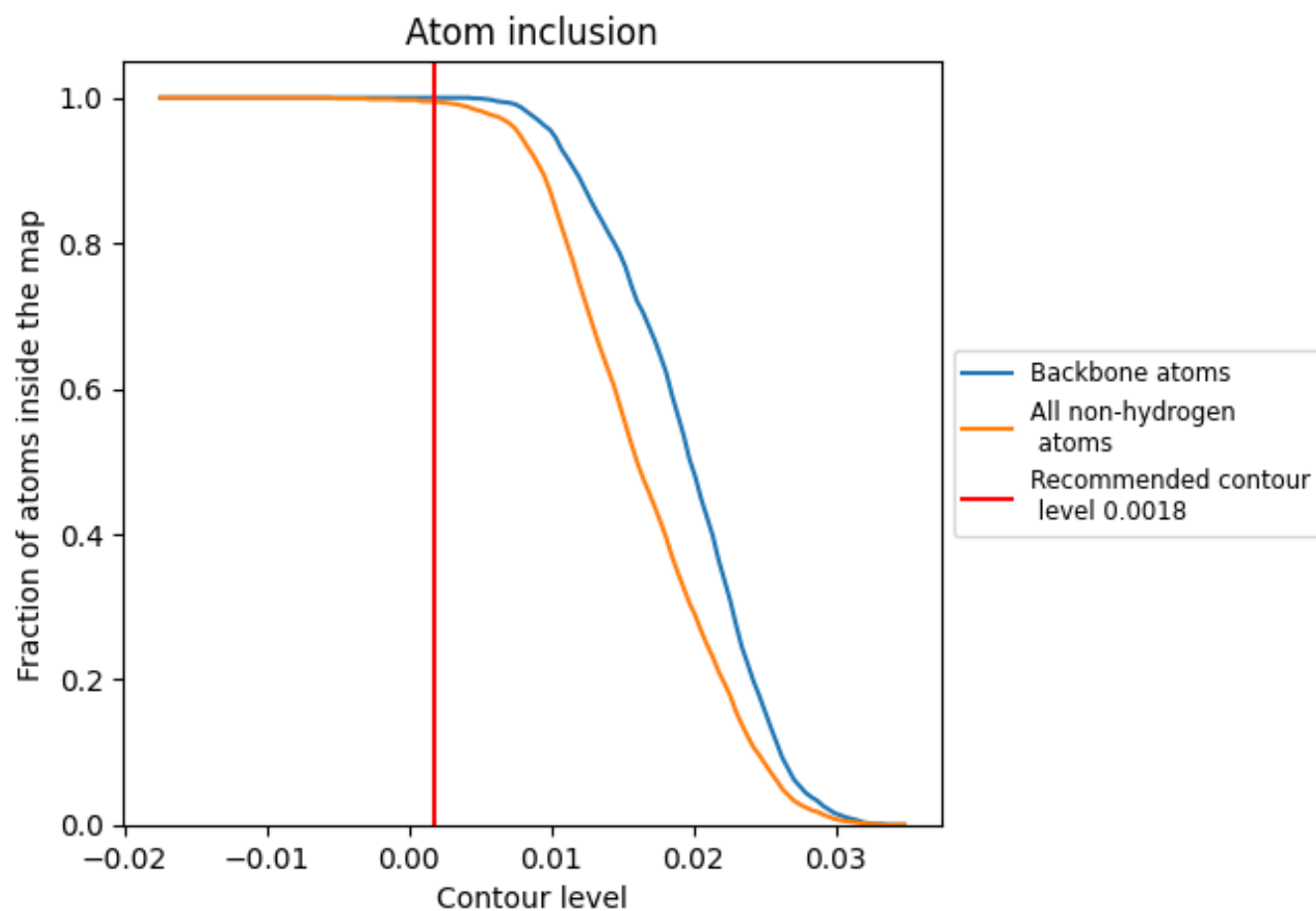
The images above show the model with each residue coloured according to its Q-score. This shows their resolvability in the map with higher Q-score values reflecting better resolvability. Please note: Q-score is calculating the resolvability of atoms, and thus high values are only expected at resolutions at which atoms can be resolved. Low Q-score values may therefore be expected for many entries.

9.3 Atom inclusion mapped to coordinate model [i](#)



The images above show the model with each residue coloured according to its atom inclusion. This shows to what extent they are inside the map at the recommended contour level (0.0018).

9.4 Atom inclusion [i](#)



At the recommended contour level, 100% of all backbone atoms, 100% of all non-hydrogen atoms, are inside the map.

9.5 Map-model fit summary ⓘ

The table lists the average atom inclusion at the recommended contour level (0.0018) and Q-score for the entire model and for each chain.

Chain	Atom inclusion	Q-score
All	<div><div></div>0.9950</div>	<div><div></div>0.2950</div>
A	<div><div></div>0.9950</div>	<div><div></div>0.2960</div>
B	<div><div></div>0.9950</div>	<div><div></div>0.2960</div>
C	<div><div></div>0.9950</div>	<div><div></div>0.2980</div>
D	<div><div></div>0.9950</div>	<div><div></div>0.2940</div>
E	<div><div></div>0.9950</div>	<div><div></div>0.2960</div>
F	<div><div></div>0.9950</div>	<div><div></div>0.2960</div>
G	<div><div></div>0.9950</div>	<div><div></div>0.3000</div>
H	<div><div></div>0.9950</div>	<div><div></div>0.2970</div>
I	<div><div></div>0.9950</div>	<div><div></div>0.2960</div>
J	<div><div></div>0.9950</div>	<div><div></div>0.2970</div>
K	<div><div></div>0.9940</div>	<div><div></div>0.2950</div>
L	<div><div></div>0.9950</div>	<div><div></div>0.2960</div>
M	<div><div></div>0.9950</div>	<div><div></div>0.2940</div>
N	<div><div></div>0.9940</div>	<div><div></div>0.2710</div>
O	<div><div></div>0.9950</div>	<div><div></div>0.2990</div>

1.0

0.0

<0.0