



Full wwPDB X-ray Structure Validation Report ⓘ

Mar 9, 2026 – 08:18 AM UTC

PDB ID : 6COD / pdb_00006cod
Title : AtHNL enantioselectivity mutant At-A9-H7 Apo Y13C,Y121L,P126F,L128W
,C131T,F179L,A209I with benzaldehyde
Authors : Jones, B.J.; Kazlauskas, R.J.; Desrouleaux, R.
Deposited on : 2018-03-12
Resolution : 1.80 Å(reported)

This is a Full wwPDB X-ray Structure Validation Report for a publicly released PDB entry.

We welcome your comments at validation@mail.wwpdb.org

A user guide is available at

<https://www.wwpdb.org/validation/2017/XrayValidationReportHelp>

with specific help available everywhere you see the ⓘ symbol.

The types of validation reports are described at

<http://www.wwpdb.org/validation/2017/FAQs#types>.

The following versions of software and data (see [references ⓘ](#)) were used in the production of this report:

MolProbity	:	4-5-2 with Phenix2.0
Mogul	:	2022.3.0, CSD as543be (2022)
Xtriage (Phenix)	:	2.0
EDS	:	3.0
Buster-report	:	wwPDB partial adaption of 1.1.7 (2018)
Percentile statistics	:	20250101.v01 (using entries in the PDB archive January 1st 2025)
CCP4	:	9.0.010 (Gargrove)
Density-Fitness	:	1.0.12
Ideal geometry (proteins)	:	Engh & Huber (2001)
Ideal geometry (DNA, RNA)	:	Parkinson et al. (1996)
Validation Pipeline (wwPDB-VP)	:	2.49

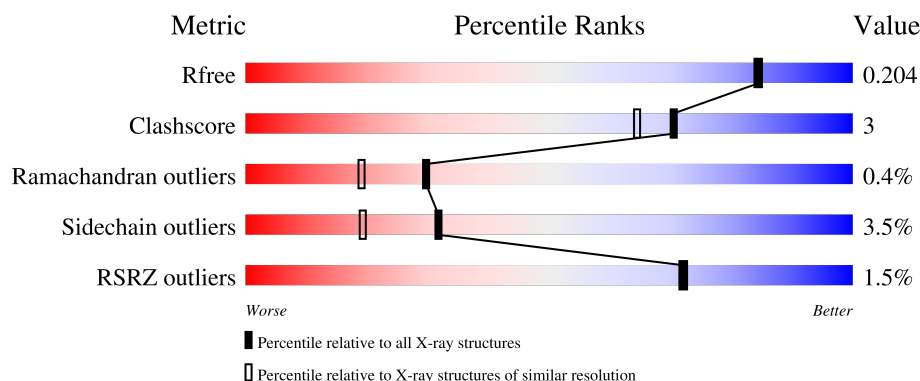
1 Overall quality at a glance

The following experimental techniques were used to determine the structure:

X-RAY DIFFRACTION

The reported resolution of this entry is 1.80 Å.

Percentile scores (ranging between 0-100) for global validation metrics of the entry are shown in the following graphic. The table shows the number of entries on which the scores are based.



Metric	Whole archive (#Entries)	Similar resolution (#Entries, resolution range(Å))
R_{free}	180053	7662 (1.80-1.80)
Clashscore	190562	8479 (1.80-1.80)
Ramachandran outliers	187476	8391 (1.80-1.80)
Sidechain outliers	187428	8390 (1.80-1.80)
RSRZ outliers	180081	7663 (1.80-1.80)

The table below summarises the geometric issues observed across the polymeric chains and their fit to the electron density. The red, orange, yellow and green segments of the lower bar indicate the fraction of residues that contain outliers for ≥ 3 , 2, 1 and 0 types of geometric quality criteria respectively. A grey segment represents the fraction of residues that are not modelled. The numeric value for each fraction is indicated below the corresponding segment, with a dot representing fractions $\leq 5\%$. The upper red bar (where present) indicates the fraction of residues that have poor fit to the electron density. The numeric value is given above the bar.

Mol	Chain	Length	Quality of chain
1	A	260	<div> <div>2%</div> <div>84%</div> <div>12%</div> <div>..</div> </div>
1	B	260	<div> <div>2%</div> <div>83%</div> <div>17%</div> </div>

The following table lists non-polymeric compounds, carbohydrate monomers and non-standard residues in protein, DNA, RNA chains that are outliers for geometric or electron-density-fit criteria:

Mol	Type	Chain	Res	Chirality	Geometry	Clashes	Electron density
3	CL	A	303	-	-	X	-
3	CL	B	301	-	-	X	-
4	HBX	A	304	-	-	X	-
4	HBX	B	302	-	-	X	-

2 Entry composition

There are 5 unique types of molecules in this entry. The entry contains 4481 atoms, of which 0 are hydrogens and 0 are deuteriums.

In the tables below, the ZeroOcc column contains the number of atoms modelled with zero occupancy, the AltConf column contains the number of residues with at least one atom in alternate conformation and the Trace column contains the number of residues modelled with at most 2 atoms.

- Molecule 1 is a protein called Alpha-hydroxynitrile lyase.

Mol	Chain	Residues	Atoms					ZeroOcc	AltConf	Trace
1	A	259	Total	C	N	O	S	0	2	0
			2080	1339	344	381	16			
1	B	259	Total	C	N	O	S	0	3	0
			2085	1341	342	387	15			

There are 16 discrepancies between the modelled and reference sequences:

Chain	Residue	Modelled	Actual	Comment	Reference
A	14	CYS	TYR	engineered mutation	UNP Q9LFT6
A	122	LEU	TYR	engineered mutation	UNP Q9LFT6
A	126	PHE	PRO	engineered mutation	UNP Q9LFT6
A	129	TRP	LEU	engineered mutation	UNP Q9LFT6
A	132	THR	CYS	engineered mutation	UNP Q9LFT6
A	210	ILE	ALA	engineered mutation	UNP Q9LFT6
A	259	GLY	-	expression tag	UNP Q9LFT6
A	260	LEU	-	expression tag	UNP Q9LFT6
B	14	CYS	TYR	engineered mutation	UNP Q9LFT6
B	122	LEU	TYR	engineered mutation	UNP Q9LFT6
B	126	PHE	PRO	engineered mutation	UNP Q9LFT6
B	129	TRP	LEU	engineered mutation	UNP Q9LFT6
B	132	THR	CYS	engineered mutation	UNP Q9LFT6
B	210	ILE	ALA	engineered mutation	UNP Q9LFT6
B	259	GLY	-	expression tag	UNP Q9LFT6
B	260	LEU	-	expression tag	UNP Q9LFT6

- Molecule 2 is GLYCEROL (CCD ID: GOL) (formula: C₃H₈O₃).

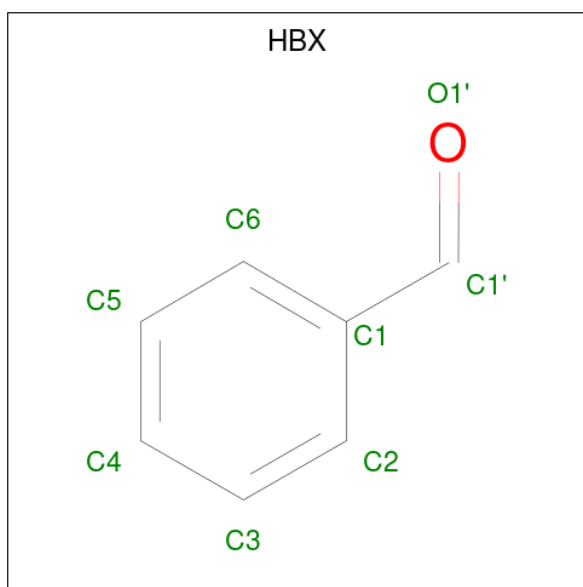


Mol	Chain	Residues	Atoms			ZeroOcc	AltConf
2	A	1	Total	C	O	0	0
			6	3	3		
2	A	1	Total	C	O	0	0
			6	3	3		

- Molecule 3 is CHLORIDE ION (CCD ID: CL) (formula: Cl).

Mol	Chain	Residues	Atoms		ZeroOcc	AltConf
3	A	1	Total	Cl	0	0
			1	1		
3	B	1	Total	Cl	0	0
			1	1		

- Molecule 4 is benzaldehyde (CCD ID: HBX) (formula: C₇H₆O) (labeled as "Ligand of Interest" by depositor).



Mol	Chain	Residues	Atoms			ZeroOcc	AltConf
4	A	1	Total	C	O	0	0
			8	7	1		
4	B	1	Total	C	O	0	0
			8	7	1		

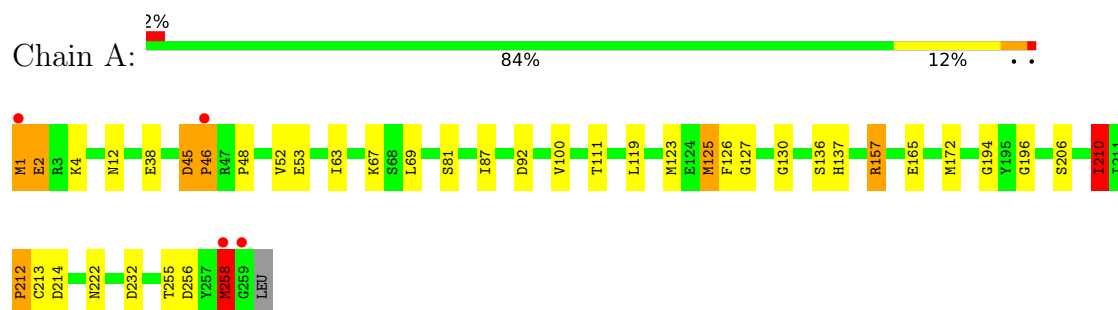
- Molecule 5 is water.

Mol	Chain	Residues	Atoms		ZeroOcc	AltConf
5	A	143	Total	O	0	0
			143	143		
5	B	143	Total	O	0	0
			143	143		

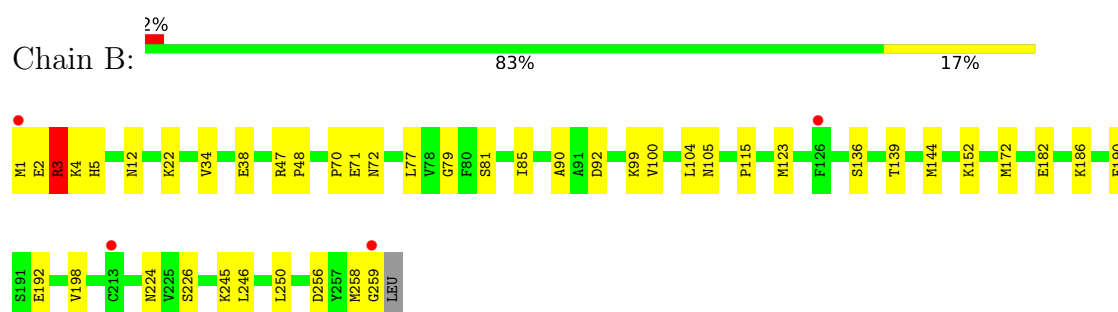
3 Residue-property plots

These plots are drawn for all protein, RNA, DNA and oligosaccharide chains in the entry. The first graphic for a chain summarises the proportions of the various outlier classes displayed in the second graphic. The second graphic shows the sequence view annotated by issues in geometry and electron density. Residues are color-coded according to the number of geometric quality criteria for which they contain at least one outlier: green = 0, yellow = 1, orange = 2 and red = 3 or more. A red dot above a residue indicates a poor fit to the electron density ($RSRZ > 2$). Stretches of 2 or more consecutive residues without any outlier are shown as a green connector. Residues present in the sample, but not in the model, are shown in grey.

- Molecule 1: Alpha-hydroxynitrile lyase



- Molecule 1: Alpha-hydroxynitrile lyase



4 Data and refinement statistics

Property	Value	Source
Space group	P 21 21 21	Depositor
Cell constants a, b, c, α , β , γ	49.77Å 87.00Å 122.78Å 90.00° 90.00° 90.00°	Depositor
Resolution (Å)	50.00 – 1.80 50.00 – 1.80	Depositor EDS
% Data completeness (in resolution range)	98.3 (50.00-1.80) 98.6 (50.00-1.80)	Depositor EDS
R_{merge}	0.07	Depositor
R_{sym}	(Not available)	Depositor
$\langle I/\sigma(I) \rangle$ ¹	1.33 (at 1.79Å)	Xtriage
Refinement program	REFMAC 5.8.0155	Depositor
R, R_{free}	0.150 , 0.194 0.163 , 0.204	Depositor DCC
R_{free} test set	2454 reflections (4.87%)	wwPDB-VP
Wilson B-factor (Å ²)	21.8	Xtriage
Anisotropy	0.157	Xtriage
Bulk solvent k_{sol} (e/Å ³), B_{sol} (Å ²)	0.34 , 30.1	EDS
L-test for twinning ²	$\langle L \rangle = 0.49$, $\langle L^2 \rangle = 0.32$	Xtriage
Estimated twinning fraction	No twinning to report.	Xtriage
F_o, F_c correlation	0.97	EDS
Total number of atoms	4481	wwPDB-VP
Average B, all atoms (Å ²)	26.0	wwPDB-VP

Xtriage's analysis on translational NCS is as follows: *The largest off-origin peak in the Patterson function is 5.79% of the height of the origin peak. No significant pseudotranslation is detected.*

¹Intensities estimated from amplitudes.

²Theoretical values of $\langle |L| \rangle$, $\langle L^2 \rangle$ for acentric reflections are 0.5, 0.333 respectively for untwinned datasets, and 0.375, 0.2 for perfectly twinned datasets.

5 Model quality [i](#)

5.1 Standard geometry [i](#)

Bond lengths and bond angles in the following residue types are not validated in this section: GOL, CL, HBX

The Z score for a bond length (or angle) is the number of standard deviations the observed value is removed from the expected value. A bond length (or angle) with $|Z| > 5$ is considered an outlier worth inspection. RMSZ is the root-mean-square of all Z scores of the bond lengths (or angles).

Mol	Chain	Bond lengths		Bond angles	
		RMSZ	# Z >5	RMSZ	# Z >5
1	A	1.80	21/2132 (1.0%)	1.49	16/2879 (0.6%)
1	B	1.76	25/2137 (1.2%)	1.40	6/2886 (0.2%)
All	All	1.78	46/4269 (1.1%)	1.44	22/5765 (0.4%)

All (46) bond length outliers are listed below:

Mol	Chain	Res	Type	Atoms	Z	Observed(Å)	Ideal(Å)
1	A	52	VAL	C-N	-11.01	1.17	1.33
1	B	81	SER	C-O	9.35	1.33	1.24
1	A	46	PRO	CA-C	8.70	1.62	1.53
1	B	81	SER	N-CA	8.62	1.57	1.47
1	A	48	PRO	N-CA	-8.05	1.38	1.46
1	A	127	GLY	C-O	-7.97	1.18	1.24
1	A	232	ASP	C-O	-7.51	1.15	1.24
1	A	81	SER	CA-C	7.38	1.59	1.52
1	A	111	THR	CA-C	6.72	1.61	1.52
1	A	206	SER	N-CA	6.64	1.54	1.46
1	B	182	GLU	CD-OE1	6.59	1.37	1.25
1	A	172	MET	CG-SD	6.45	1.96	1.80
1	A	157	ARG	CD-NE	-6.39	1.37	1.46
1	A	157	ARG	CZ-NH2	-6.34	1.25	1.33
1	B	172	MET	CG-SD	6.29	1.96	1.80
1	B	48	PRO	N-CA	-6.12	1.40	1.46
1	B	198	VAL	CA-CB	6.06	1.62	1.54
1	B	224	ASN	CA-CB	5.94	1.63	1.53
1	A	194	GLY	N-CA	5.93	1.49	1.45
1	B	250	LEU	CA-C	-5.88	1.44	1.52
1	B	47	ARG	NE-CZ	-5.83	1.26	1.33
1	A	45	ASP	C-O	-5.82	1.16	1.24
1	B	139	THR	C-O	-5.73	1.16	1.23
1	B	226	SER	CA-C	-5.66	1.45	1.52

Continued on next page...

Continued from previous page...

Mol	Chain	Res	Type	Atoms	Z	Observed(Å)	Ideal(Å)
1	A	4	LYS	N-CA	5.58	1.52	1.45
1	B	100	VAL	C-O	5.57	1.30	1.23
1	B	99	LYS	CA-C	-5.53	1.45	1.52
1	B	72	ASN	CG-ND2	-5.51	1.21	1.33
1	B	3	ARG	CA-C	5.49	1.60	1.52
1	A	165	GLU	CD-OE1	5.39	1.35	1.25
1	B	77	LEU	CA-C	5.39	1.59	1.52
1	B	5	HIS	N-CA	-5.32	1.38	1.45
1	B	22	LYS	CD-CE	-5.25	1.36	1.52
1	B	246	LEU	C-O	5.24	1.30	1.24
1	A	53	GLU	N-CA	5.22	1.53	1.46
1	A	136	SER	CA-C	-5.20	1.46	1.52
1	B	79	GLY	CA-C	-5.19	1.48	1.52
1	B	70	PRO	N-CA	5.11	1.53	1.47
1	A	196	GLY	C-O	-5.10	1.18	1.24
1	A	46	PRO	CA-CB	5.10	1.58	1.53
1	A	100	VAL	N-CA	-5.09	1.40	1.46
1	B	192	GLU	CA-CB	5.06	1.61	1.53
1	A	214	ASP	C-O	-5.04	1.18	1.24
1	B	85	ILE	N-CA	-5.04	1.40	1.46
1	B	136	SER	N-CA	5.02	1.52	1.45
1	B	34	VAL	C-O	5.00	1.29	1.24

All (22) bond angle outliers are listed below:

Mol	Chain	Res	Type	Atoms	Z	Observed(°)	Ideal(°)
1	A	172	MET	CG-SD-CE	-14.79	68.35	100.90
1	B	172	MET	CG-SD-CE	-11.95	74.62	100.90
1	A	52	VAL	CA-C-N	-10.08	104.82	122.26
1	A	52	VAL	C-N-CA	-10.08	104.82	122.26
1	A	157	ARG	NE-CZ-NH1	8.43	129.93	121.50
1	B	144	MET	CG-SD-CE	-8.03	83.24	100.90
1	A	210	ILE	CB-CA-C	7.79	118.78	111.30
1	B	256	ASP	N-CA-C	7.60	121.65	112.38
1	A	157	ARG	NE-CZ-NH2	-6.99	112.91	119.20
1	A	256	ASP	N-CA-C	6.85	120.74	112.38
1	A	69	LEU	CA-C-N	-6.68	112.77	119.92
1	A	69	LEU	C-N-CA	-6.68	112.77	119.92
1	A	67	LYS	CD-CE-NZ	-6.61	90.76	111.90
1	A	136	SER	CB-CA-C	-6.25	96.32	109.38
1	A	87	ILE	O-C-N	6.11	128.70	121.80
1	B	90	ALA	N-CA-C	5.89	117.70	111.28

Continued on next page...

Continued from previous page...

Mol	Chain	Res	Type	Atoms	Z	Observed(°)	Ideal(°)
1	B	123	MET	CG-SD-CE	5.71	113.46	100.90
1	A	63	ILE	CB-CG1-CD1	5.46	125.27	113.80
1	A	212	PRO	CB-CA-C	-5.32	104.60	111.46
1	B	152	LYS	CA-CB-CG	-5.20	103.71	114.10
1	A	52	VAL	O-C-N	-5.15	115.19	122.76
1	A	67	LYS	CB-CG-CD	-5.06	99.66	111.30

There are no chirality outliers.

There are no planarity outliers.

5.2 Too-close contacts ⓘ

In the following table, the Non-H and H(model) columns list the number of non-hydrogen atoms and hydrogen atoms in the chain respectively. The H(added) column lists the number of hydrogen atoms added and optimized by MolProbity. The Clashes column lists the number of clashes within the asymmetric unit, whereas Symm-Clashes lists symmetry-related clashes.

Mol	Chain	Non-H	H(model)	H(added)	Clashes	Symm-Clashes
1	A	2080	0	2064	13	0
1	B	2085	0	2057	11	0
2	A	12	0	16	1	0
3	A	1	0	0	3	0
3	B	1	0	0	3	0
4	A	8	0	6	4	0
4	B	8	0	6	4	0
5	A	143	0	0	1	0
5	B	143	0	0	0	0
All	All	4481	0	4149	28	0

The all-atom clashscore is defined as the number of clashes found per 1000 atoms (including hydrogen atoms). The all-atom clashscore for this structure is 3.

All (28) close contacts within the same asymmetric unit are listed below, sorted by their clash magnitude.

Atom-1	Atom-2	Interatomic distance (Å)	Clash overlap (Å)
3:A:303:CL:CL	4:A:304:HBX:C1'	2.47	0.99
3:B:301:CL:CL	4:B:302:HBX:C1'	2.59	0.87
3:A:303:CL:CL	4:A:304:HBX:H1'	2.12	0.86
1:B:71[B]:GLU:HA	1:B:71[B]:GLU:OE1	1.82	0.79
1:A:45:ASP:OD1	1:A:46:PRO:HD2	1.86	0.76

Continued on next page...

Continued from previous page...

Atom-1	Atom-2	Interatomic distance (Å)	Clash overlap (Å)
1:A:130:GLY:HA3	2:A:302:GOL:H12	1.79	0.64
1:A:258:MET:HA	1:A:258:MET:HE2	1.84	0.60
1:B:12:ASN:HD22	4:B:302:HBX:C1'	2.16	0.59
1:B:71[B]:GLU:OE1	1:B:71[B]:GLU:CA	2.51	0.59
3:B:301:CL:CL	4:B:302:HBX:H1'	2.40	0.59
1:A:12:ASN:HD22	4:A:304:HBX:C1'	2.15	0.58
1:A:210:ILE:O	1:A:212:PRO:HD3	2.04	0.57
1:A:125:MET:HE2	1:A:126:PHE:HA	1.88	0.56
1:A:45:ASP:OD1	1:A:46:PRO:CD	2.56	0.53
1:B:1:MET:HE3	1:B:4:LYS:CE	2.41	0.51
1:A:119:LEU:O	1:A:123[B]:MET:HG2	2.11	0.51
1:B:12:ASN:HD22	4:B:302:HBX:H1'	1.78	0.49
1:A:12:ASN:HD22	4:A:304:HBX:H1'	1.80	0.47
1:B:1:MET:HE3	1:B:4:LYS:HE3	1.98	0.46
1:B:3:ARG:CZ	1:B:259:GLY:HA2	2.46	0.45
1:A:12:ASN:HB2	3:A:303:CL:CL	2.54	0.44
1:A:137:HIS:HE1	5:A:403:HOH:O	2.00	0.43
1:B:1:MET:HE3	1:B:4:LYS:HE2	2.01	0.42
1:A:255:THR:O	1:A:258:MET:HG2	2.19	0.42
1:A:1:MET:HE3	1:A:2:GLU:O	2.19	0.42
1:B:115:PRO:HB3	1:B:190:PHE:CE2	2.54	0.42
1:B:104:LEU:O	1:B:105:ASN:C	2.64	0.40
1:B:12:ASN:HB2	3:B:301:CL:CL	2.58	0.40

There are no symmetry-related clashes.

5.3 Torsion angles [i](#)

5.3.1 Protein backbone [i](#)

In the following table, the Percentiles column shows the percent Ramachandran outliers of the chain as a percentile score with respect to all X-ray entries followed by that with respect to entries of similar resolution.

The Analysed column shows the number of residues for which the backbone conformation was analysed, and the total number of residues.

Mol	Chain	Analysed	Favoured	Allowed	Outliers	Percentiles	
1	A	259/260 (100%)	251 (97%)	6 (2%)	2 (1%)	16	6
1	B	260/260 (100%)	257 (99%)	3 (1%)	0	100	100

Continued on next page...

Continued from previous page...

Mol	Chain	Analysed	Favoured	Allowed	Outliers	Percentiles	
All	All	519/520 (100%)	508 (98%)	9 (2%)	2 (0%)	30	19

All (2) Ramachandran outliers are listed below:

Mol	Chain	Res	Type
1	A	258	MET
1	A	2	GLU

5.3.2 Protein sidechains ⓘ

In the following table, the Percentiles column shows the percent sidechain outliers of the chain as a percentile score with respect to all X-ray entries followed by that with respect to entries of similar resolution.

The Analysed column shows the number of residues for which the sidechain conformation was analysed, and the total number of residues.

Mol	Chain	Analysed	Rotameric	Outliers	Percentiles	
1	A	228/227 (100%)	219 (96%)	9 (4%)	28	16
1	B	229/227 (101%)	222 (97%)	7 (3%)	35	23
All	All	457/454 (101%)	441 (96%)	16 (4%)	32	19

All (16) residues with a non-rotameric sidechain are listed below:

Mol	Chain	Res	Type
1	A	1	MET
1	A	38	GLU
1	A	92	ASP
1	A	125	MET
1	A	157	ARG
1	A	210	ILE
1	A	213	CYS
1	A	222	ASN
1	A	258	MET
1	B	2	GLU
1	B	3	ARG
1	B	38	GLU
1	B	92	ASP
1	B	186	LYS
1	B	245	LYS
1	B	258	MET

Sometimes sidechains can be flipped to improve hydrogen bonding and reduce clashes. All (3) such sidechains are listed below:

Mol	Chain	Res	Type
1	A	137	HIS
1	B	5	HIS
1	B	199	GLN

5.3.3 RNA [i](#)

There are no RNA molecules in this entry.

5.4 Non-standard residues in protein, DNA, RNA chains [i](#)

There are no non-standard protein/DNA/RNA residues in this entry.

5.5 Carbohydrates [i](#)

There are no oligosaccharides in this entry.

5.6 Ligand geometry [i](#)

Of 6 ligands modelled in this entry, 2 are monoatomic - leaving 4 for Mogul analysis.

In the following table, the Counts columns list the number of bonds (or angles) for which Mogul statistics could be retrieved, the number of bonds (or angles) that are observed in the model and the number of bonds (or angles) that are defined in the Chemical Component Dictionary. The Link column lists molecule types, if any, to which the group is linked. The Z score for a bond length (or angle) is the number of standard deviations the observed value is removed from the expected value. A bond length (or angle) with $|Z| > 2$ is considered an outlier worth inspection. RMSZ is the root-mean-square of all Z scores of the bond lengths (or angles).

Mol	Type	Chain	Res	Link	Bond lengths			Bond angles		
					Counts	RMSZ	$\# Z > 2$	Counts	RMSZ	$\# Z > 2$
2	GOL	A	302	-	5,5,5	0.76	0	5,5,5	0.95	0
4	HBX	B	302	-	8,8,8	0.64	0	9,9,9	2.09	2 (22%)
2	GOL	A	301	-	5,5,5	0.95	0	5,5,5	0.68	0
4	HBX	A	304	-	8,8,8	0.80	0	9,9,9	1.95	3 (33%)

In the following table, the Chirals column lists the number of chiral outliers, the number of chiral centers analysed, the number of these observed in the model and the number defined in the Chemical Component Dictionary. Similar counts are reported in the Torsion and Rings columns. '-' means no outliers of that kind were identified.

Mol	Type	Chain	Res	Link	Chirals	Torsions	Rings
2	GOL	A	302	-	-	2/4/4/4	-
4	HBX	B	302	-	-	0/2/2/2	0/1/1/1
2	GOL	A	301	-	-	2/4/4/4	-
4	HBX	A	304	-	-	0/2/2/2	0/1/1/1

There are no bond length outliers.

All (5) bond angle outliers are listed below:

Mol	Chain	Res	Type	Atoms	Z	Observed(°)	Ideal(°)
4	B	302	HBX	C6-C1-C2	4.26	123.97	117.65
4	A	304	HBX	C6-C1-C2	3.97	123.55	117.65
4	B	302	HBX	C3-C2-C1	-2.71	117.47	120.64
4	A	304	HBX	C5-C6-C1	-2.51	117.70	120.64
4	A	304	HBX	C2-C1-C1'	-2.28	114.41	120.33

There are no chirality outliers.

All (4) torsion outliers are listed below:

Mol	Chain	Res	Type	Atoms
2	A	301	GOL	C1-C2-C3-O3
2	A	302	GOL	O1-C1-C2-C3
2	A	302	GOL	O1-C1-C2-O2
2	A	301	GOL	O2-C2-C3-O3

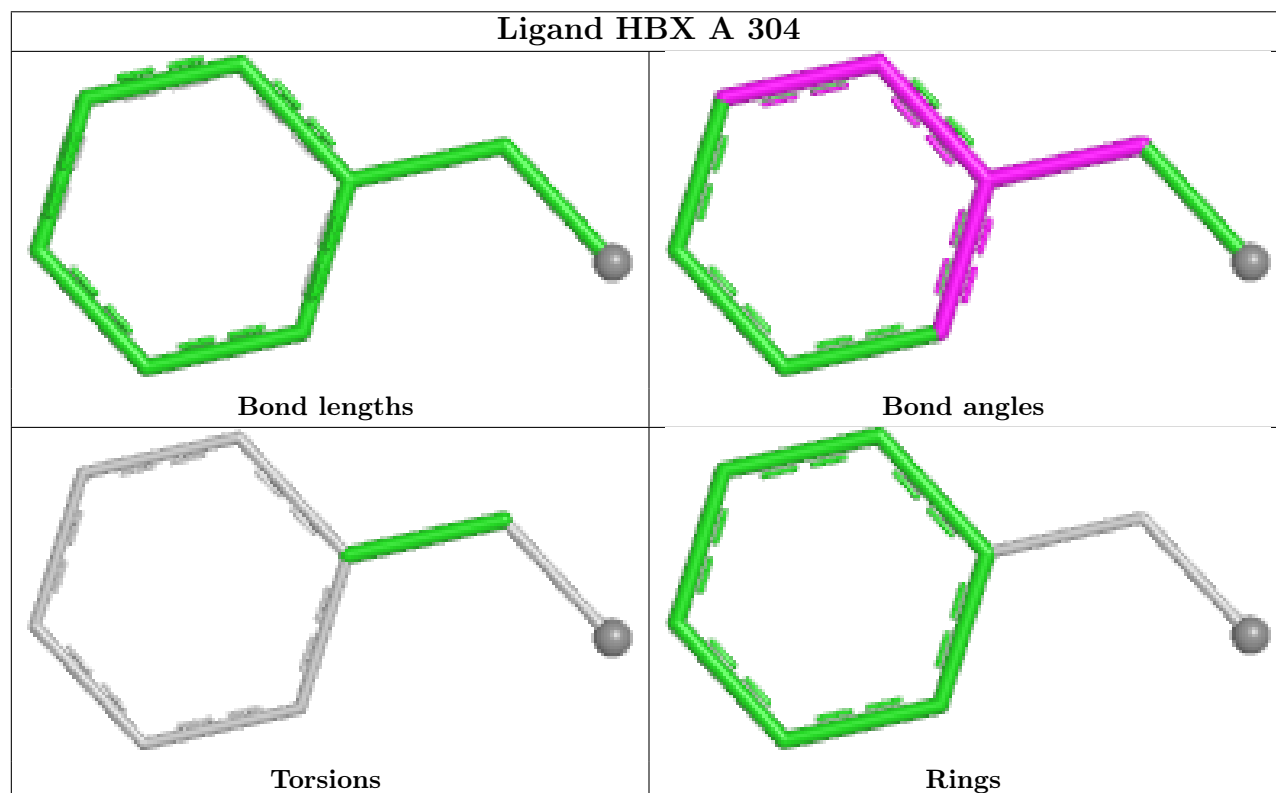
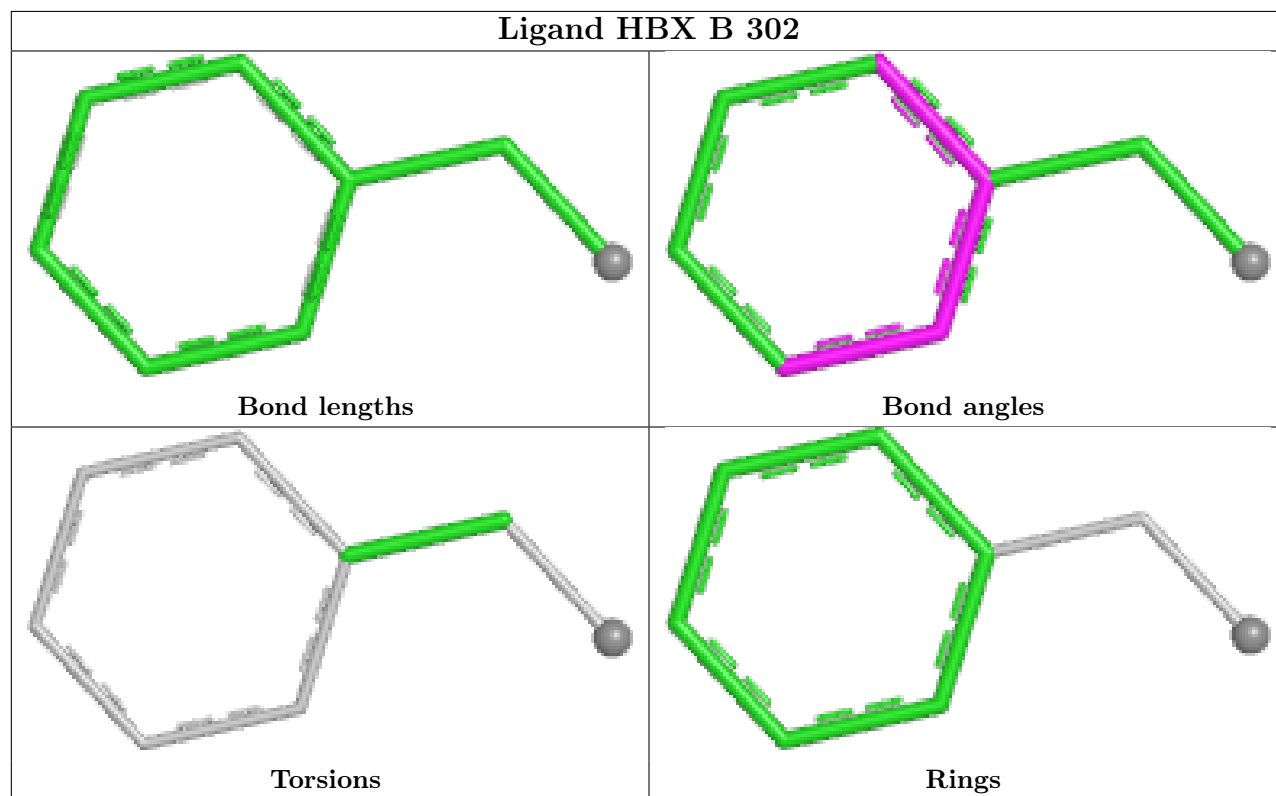
There are no ring outliers.

3 monomers are involved in 9 short contacts:

Mol	Chain	Res	Type	Clashes	Symm-Clashes
2	A	302	GOL	1	0
4	B	302	HBX	4	0
4	A	304	HBX	4	0

The following is a two-dimensional graphical depiction of Mogul quality analysis of bond lengths, bond angles, torsion angles, and ring geometry for all instances of the Ligand of Interest. In addition, ligands with molecular weight > 250 and outliers as shown on the validation Tables will also be included. For torsion angles, if less than 5% of the Mogul distribution of torsion angles is within 10 degrees of the torsion angle in question, then that torsion angle is considered an outlier. Any bond that is central to one or more torsion angles identified as an outlier by Mogul will be highlighted in the graph. For rings, the root-mean-square deviation (RMSD) between the ring in question and similar rings identified by Mogul is calculated over all ring torsion angles. If the average RMSD is greater than 60 degrees and the minimal RMSD between the ring in question and

any Mogul-identified rings is also greater than 60 degrees, then that ring is considered an outlier. The outliers are highlighted in purple. The color gray indicates Mogul did not find sufficient equivalents in the CSD to analyse the geometry.



5.7 Other polymers [i](#)

There are no such residues in this entry.

5.8 Polymer linkage issues [i](#)

The following chains have linkage breaks:

Mol	Chain	Number of breaks
1	A	1

All chain breaks are listed below:

Model	Chain	Residue-1	Atom-1	Residue-2	Atom-2	Distance (Å)
1	A	52:VAL	C	53:GLU	N	1.17

6 Fit of model and data [i](#)

6.1 Protein, DNA and RNA chains [i](#)

In the following table, the column labelled ‘#RSRZ> 2’ contains the number (and percentage) of RSRZ outliers, followed by percent RSRZ outliers for the chain as percentile scores relative to all X-ray entries and entries of similar resolution. The OWAB column contains the minimum, median, 95th percentile and maximum values of the occupancy-weighted average B-factor per residue. The column labelled ‘Q< 0.9’ lists the number of (and percentage) of residues with an average occupancy less than 0.9.

Mol	Chain	Analysed	<RSRZ>	#RSRZ>2	OWAB(Å ²)	Q<0.9
1	A	259/260 (99%)	-0.32	4 (1%) 72 72	12, 23, 45, 92	2 (0%)
1	B	259/260 (99%)	-0.40	4 (1%) 72 72	10, 21, 43, 77	3 (1%)
All	All	518/520 (99%)	-0.36	8 (1%) 72 72	10, 22, 44, 92	5 (0%)

All (8) RSRZ outliers are listed below:

Mol	Chain	Res	Type	RSRZ
1	A	259	GLY	3.2
1	A	46	PRO	2.9
1	B	126	PHE	2.9
1	B	259	GLY	2.8
1	B	1	MET	2.5
1	A	1	MET	2.4
1	A	258	MET	2.3
1	B	213	CYS	2.3

6.2 Non-standard residues in protein, DNA, RNA chains [i](#)

There are no non-standard protein/DNA/RNA residues in this entry.

6.3 Carbohydrates [i](#)

There are no oligosaccharides in this entry.

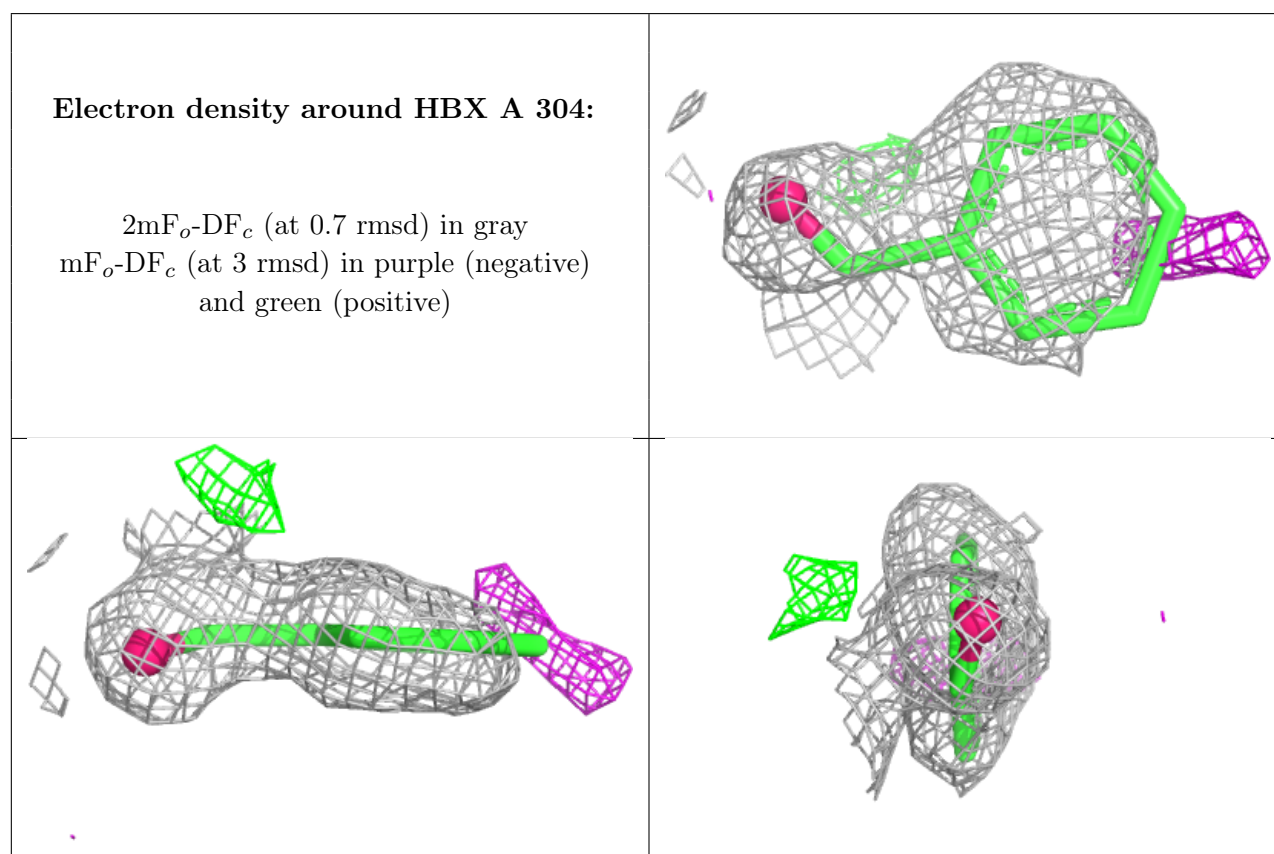
6.4 Ligands [i](#)

In the following table, the Atoms column lists the number of modelled atoms in the group and the number defined in the chemical component dictionary. The B-factors column lists the minimum,

median, 95th percentile and maximum values of B factors of atoms in the group. The column labelled 'Q< 0.9' lists the number of atoms with occupancy less than 0.9.

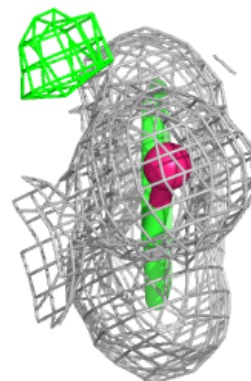
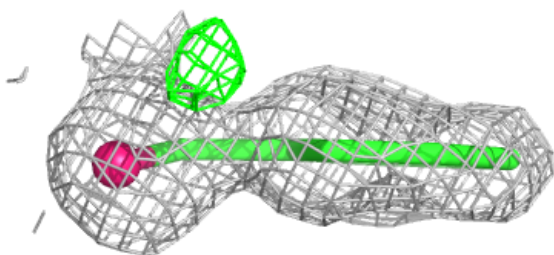
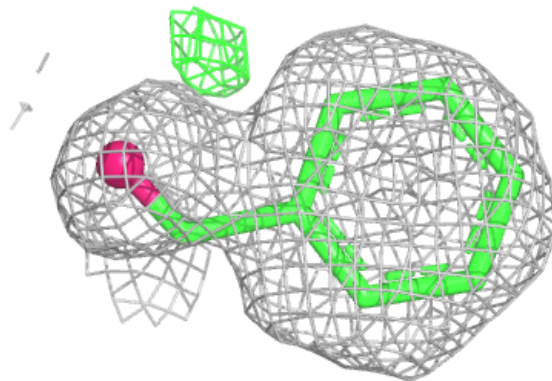
Mol	Type	Chain	Res	Atoms	RSCC	RSR	B-factors(Å ²)	Q<0.9
2	GOL	A	302	6/6	0.84	0.15	38,50,54,62	0
4	HBX	A	304	8/8	0.86	0.15	31,40,42,43	8
4	HBX	B	302	8/8	0.89	0.12	27,32,34,40	8
2	GOL	A	301	6/6	0.93	0.08	28,34,36,39	0
3	CL	A	303	1/1	0.98	0.06	28,28,28,28	0
3	CL	B	301	1/1	0.99	0.09	27,27,27,27	0

The following is a graphical depiction of the model fit to experimental electron density of all instances of the Ligand of Interest. In addition, ligands with molecular weight > 250 and outliers as shown on the geometry validation Tables will also be included. Each fit is shown from different orientation to approximate a three-dimensional view.



Electron density around HBX B 302:

$2mF_o-DF_c$ (at 0.7 rmsd) in gray
 mF_o-DF_c (at 3 rmsd) in purple (negative)
and green (positive)



6.5 Other polymers [i](#)

There are no such residues in this entry.