



Full wwPDB X-ray Structure Validation Report ⓘ

Mar 9, 2026 – 10:14 PM UTC

PDB ID : 2CDA / pdb_00002cda
Title : Sulfolobus solfataricus Glucose Dehydrogenase 1 in complex with NADP
Authors : Milburn, C.C.; Lambale, H.J.; Theodossis, A.; Hough, D.W.; Danson, M.J.;
Taylor, G.L.
Deposited on : 2006-01-23
Resolution : 2.28 Å (reported)

This is a Full wwPDB X-ray Structure Validation Report for a publicly released PDB entry.

We welcome your comments at validation@mail.wwpdb.org

A user guide is available at

<https://www.wwpdb.org/validation/2017/XrayValidationReportHelp>

with specific help available everywhere you see the ⓘ symbol.

The types of validation reports are described at

<http://www.wwpdb.org/validation/2017/FAQs#types>.

The following versions of software and data (see [references ⓘ](#)) were used in the production of this report:

MolProbity : 4-5-2 with Phenix2.0
Mogul : 2022.3.0, CSD as543be (2022)
Xtriage (Phenix) : 2.0
EDS : 3.0
Buster-report : wwPDB partial adaption of 1.1.7 (2018)
Percentile statistics : 20250101.v01 (using entries in the PDB archive January 1st 2025)
CCP4 : 9.0.010 (Gargrove)
Density-Fitness : 1.0.12
Ideal geometry (proteins) : Engh & Huber (2001)
Ideal geometry (DNA, RNA) : Parkinson et al. (1996)
Validation Pipeline (wwPDB-VP) : 2.49

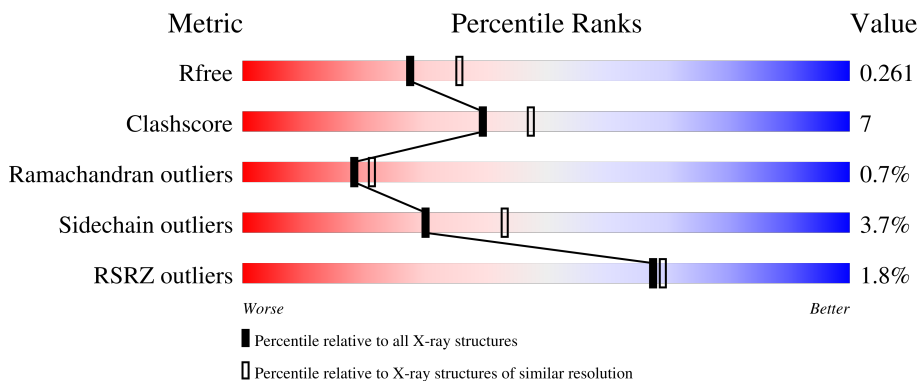
1 Overall quality at a glance

The following experimental techniques were used to determine the structure:

X-RAY DIFFRACTION

The reported resolution of this entry is 2.28 Å.

Percentile scores (ranging between 0-100) for global validation metrics of the entry are shown in the following graphic. The table shows the number of entries on which the scores are based.



Metric	Whole archive (#Entries)	Similar resolution (#Entries, resolution range(Å))
R_{free}	180053	9078 (2.30-2.26)
Clashscore	190562	9802 (2.30-2.26)
Ramachandran outliers	187476	9690 (2.30-2.26)
Sidechain outliers	187428	9691 (2.30-2.26)
RSRZ outliers	180081	9085 (2.30-2.26)

The table below summarises the geometric issues observed across the polymeric chains and their fit to the electron density. The red, orange, yellow and green segments of the lower bar indicate the fraction of residues that contain outliers for ≥ 3 , 2, 1 and 0 types of geometric quality criteria respectively. A grey segment represents the fraction of residues that are not modelled. The numeric value for each fraction is indicated below the corresponding segment, with a dot representing fractions $\leq 5\%$. The upper red bar (where present) indicates the fraction of residues that have poor fit to the electron density. The numeric value is given above the bar.

Mol	Chain	Length	Quality of chain
1	A	366	 2% 78% 18% ...
1	B	366	 % 79% 17% ..

2 Entry composition [i](#)

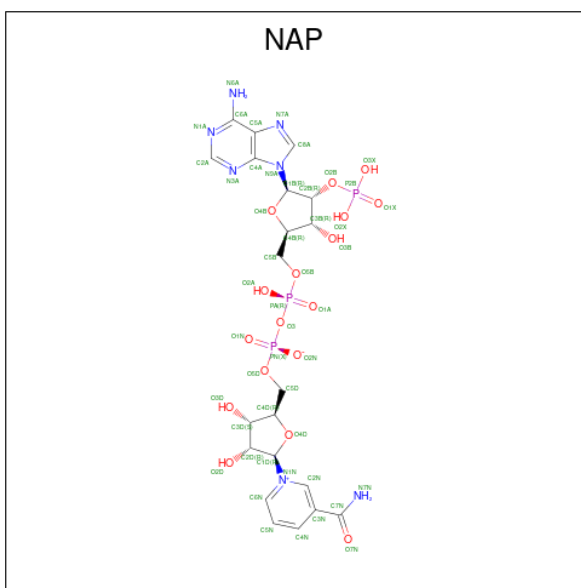
There are 4 unique types of molecules in this entry. The entry contains 5913 atoms, of which 0 are hydrogens and 0 are deuteriums.

In the tables below, the ZeroOcc column contains the number of atoms modelled with zero occupancy, the AltConf column contains the number of residues with at least one atom in alternate conformation and the Trace column contains the number of residues modelled with at most 2 atoms.

- Molecule 1 is a protein called GLUCOSE DEHYDROGENASE.

Mol	Chain	Residues	Atoms					ZeroOcc	AltConf	Trace
			Total	C	N	O	S			
1	A	360	Total 2833	C 1813	N 482	O 525	S 13	0	0	0
1	B	359	Total 2824	C 1807	N 480	O 524	S 13	0	0	0

- Molecule 2 is NADP NICOTINAMIDE-ADENINE-DINUCLEOTIDE PHOSPHATE (CCD ID: NAP) (formula: C₂₁H₂₈N₇O₁₇P₃).



Mol	Chain	Residues	Atoms					ZeroOcc	AltConf
			Total	C	N	O	P		
2	A	1	Total 48	C 21	N 7	O 17	P 3	0	0
2	B	1	Total 48	C 21	N 7	O 17	P 3	0	0

- Molecule 3 is ZINC ION (CCD ID: ZN) (formula: Zn).

Mol	Chain	Residues	Atoms		ZeroOcc	AltConf
3	A	2	Total 2	Zn 2	0	0
3	B	2	Total 2	Zn 2	0	0

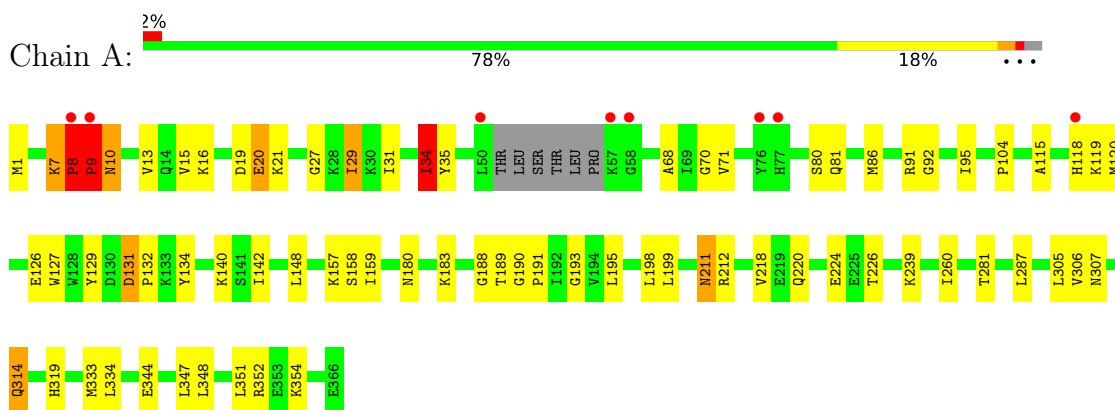
- Molecule 4 is water.

Mol	Chain	Residues	Atoms		ZeroOcc	AltConf
4	A	75	Total 75	O 75	0	0
4	B	81	Total 81	O 81	0	0

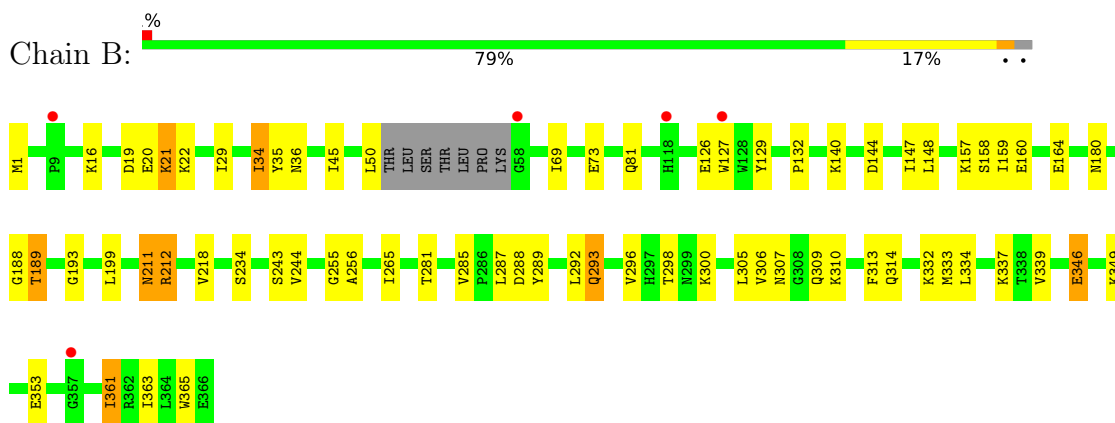
3 Residue-property plots [i](#)

These plots are drawn for all protein, RNA, DNA and oligosaccharide chains in the entry. The first graphic for a chain summarises the proportions of the various outlier classes displayed in the second graphic. The second graphic shows the sequence view annotated by issues in geometry and electron density. Residues are color-coded according to the number of geometric quality criteria for which they contain at least one outlier: green = 0, yellow = 1, orange = 2 and red = 3 or more. A red dot above a residue indicates a poor fit to the electron density ($RSRZ > 2$). Stretches of 2 or more consecutive residues without any outlier are shown as a green connector. Residues present in the sample, but not in the model, are shown in grey.

• Molecule 1: GLUCOSE DEHYDROGENASE



• Molecule 1: GLUCOSE DEHYDROGENASE



4 Data and refinement statistics

Property	Value	Source
Space group	P 21 21 2	Depositor
Cell constants a, b, c, α , β , γ	68.62Å 92.30Å 138.26Å 90.00° 90.00° 90.00°	Depositor
Resolution (Å)	138.68 – 2.28 138.26 – 2.28	Depositor EDS
% Data completeness (in resolution range)	98.1 (138.68-2.28) 98.1 (138.26-2.28)	Depositor EDS
R_{merge}	0.11	Depositor
R_{sym}	(Not available)	Depositor
$\langle I/\sigma(I) \rangle$ ¹	4.37 (at 2.29Å)	Xtrriage
Refinement program	REFMAC 5.2.0005	Depositor
R, R_{free}	0.196 , 0.246 (Not available) , 0.261	Depositor DCC
R_{free} test set	2008 reflections (5.01%)	wwPDB-VP
Wilson B-factor (Å ²)	19.5	Xtrriage
Anisotropy	0.842	Xtrriage
Bulk solvent k_{sol} (e/Å ³), B_{sol} (Å ²)	0.37 , 35.5	EDS
L-test for twinning ²	$\langle L \rangle = 0.44$, $\langle L^2 \rangle = 0.27$	Xtrriage
Estimated twinning fraction	No twinning to report.	Xtrriage
F_o, F_c correlation	0.93	EDS
Total number of atoms	5913	wwPDB-VP
Average B, all atoms (Å ²)	20.0	wwPDB-VP

Xtrriage's analysis on translational NCS is as follows: *The analyses of the Patterson function reveals a significant off-origin peak that is 22.87 % of the origin peak, indicating pseudo-translational symmetry. The chance of finding a peak of this or larger height randomly in a structure without pseudo-translational symmetry is equal to 5.2223e-03.*

¹Intensities estimated from amplitudes.

²Theoretical values of $\langle |L| \rangle$, $\langle L^2 \rangle$ for acentric reflections are 0.5, 0.333 respectively for untwinned datasets, and 0.375, 0.2 for perfectly twinned datasets.

5 Model quality i

5.1 Standard geometry i

Bond lengths and bond angles in the following residue types are not validated in this section: ZN, NAP

The Z score for a bond length (or angle) is the number of standard deviations the observed value is removed from the expected value. A bond length (or angle) with $|Z| > 5$ is considered an outlier worth inspection. RMSZ is the root-mean-square of all Z scores of the bond lengths (or angles).

Mol	Chain	Bond lengths		Bond angles	
		RMSZ	# Z >5	RMSZ	# Z >5
1	A	1.10	3/2886 (0.1%)	1.24	21/3899 (0.5%)
1	B	1.10	4/2877 (0.1%)	1.14	9/3888 (0.2%)
All	All	1.10	7/5763 (0.1%)	1.19	30/7787 (0.4%)

Chiral center outliers are detected by calculating the chiral volume of a chiral center and verifying if the center is modelled as a planar moiety or with the opposite hand. A planarity outlier is detected by checking planarity of atoms in a peptide group, atoms in a mainchain group or atoms of a sidechain that are expected to be planar.

Mol	Chain	#Chirality outliers	#Planarity outliers
1	B	0	1

All (7) bond length outliers are listed below:

Mol	Chain	Res	Type	Atoms	Z	Observed(Å)	Ideal(Å)
1	B	285	VAL	CA-CB	7.83	1.61	1.54
1	A	7	LYS	C-N	6.94	1.41	1.33
1	B	310	LYS	C-O	-5.95	1.18	1.24
1	B	265	ILE	CA-CB	5.92	1.57	1.54
1	A	190	GLY	N-CA	5.72	1.52	1.44
1	B	361	ILE	CA-CB	5.09	1.60	1.54
1	A	142	ILE	CA-CB	5.02	1.59	1.54

All (30) bond angle outliers are listed below:

Mol	Chain	Res	Type	Atoms	Z	Observed(°)	Ideal(°)
1	A	8	PRO	N-CA-C	12.81	126.33	110.70
1	A	7	LYS	CA-C-N	11.54	132.26	120.38
1	A	7	LYS	C-N-CA	11.54	132.26	120.38
1	A	8	PRO	CA-C-N	-11.06	106.02	119.84

Continued on next page...

Continued from previous page...

Mol	Chain	Res	Type	Atoms	Z	Observed(°)	Ideal(°)
1	A	8	PRO	C-N-CA	-11.06	106.02	119.84
1	A	7	LYS	O-C-N	10.63	130.80	121.34
1	A	34	ILE	CB-CA-C	8.01	118.99	111.30
1	A	189	THR	CA-C-N	-6.59	111.52	121.87
1	A	189	THR	C-N-CA	-6.59	111.52	121.87
1	A	306	VAL	N-CA-C	6.49	117.16	108.27
1	A	9	PRO	N-CA-CB	6.34	109.91	103.25
1	B	256	ALA	N-CA-C	6.32	119.04	109.63
1	A	95	ILE	N-CA-C	6.25	117.60	111.67
1	B	310	LYS	CA-C-N	-6.23	112.13	119.05
1	B	310	LYS	C-N-CA	-6.23	112.13	119.05
1	A	9	PRO	N-CA-C	-6.19	99.72	112.47
1	A	344	GLU	N-CA-C	6.11	118.02	111.36
1	A	131	ASP	CA-C-N	6.02	126.19	119.32
1	A	131	ASP	C-N-CA	6.02	126.19	119.32
1	A	9	PRO	CA-N-CD	-6.02	103.58	112.00
1	B	353	GLU	N-CA-C	5.80	118.67	108.75
1	A	314	GLN	N-CA-C	5.70	117.49	111.28
1	A	10	ASN	N-CA-C	5.69	118.70	110.28
1	B	16	LYS	N-CA-C	5.66	117.45	108.79
1	B	306	VAL	N-CA-C	5.52	115.83	108.27
1	A	319	HIS	N-CA-C	5.51	117.36	111.36
1	B	189	THR	CA-C-N	-5.36	113.45	121.87
1	B	189	THR	C-N-CA	-5.36	113.45	121.87
1	A	8	PRO	CA-N-CD	-5.10	104.86	112.00
1	B	144	ASP	N-CA-C	5.10	116.83	111.28

There are no chirality outliers.

All (1) planarity outliers are listed below:

Mol	Chain	Res	Type	Group
1	B	255	GLY	Peptide

5.2 Too-close contacts [i](#)

In the following table, the Non-H and H(model) columns list the number of non-hydrogen atoms and hydrogen atoms in the chain respectively. The H(added) column lists the number of hydrogen atoms added and optimized by MolProbity. The Clashes column lists the number of clashes within the asymmetric unit, whereas Symm-Clashes lists symmetry-related clashes.

Mol	Chain	Non-H	H(model)	H(added)	Clashes	Symm-Clashes
1	A	2833	0	2887	39	0
1	B	2824	0	2874	44	0
2	A	48	0	25	0	0
2	B	48	0	25	0	0
3	A	2	0	0	0	0
3	B	2	0	0	0	0
4	A	75	0	0	1	0
4	B	81	0	0	2	0
All	All	5913	0	5811	78	0

The all-atom clashscore is defined as the number of clashes found per 1000 atoms (including hydrogen atoms). The all-atom clashscore for this structure is 7.

All (78) close contacts within the same asymmetric unit are listed below, sorted by their clash magnitude.

Atom-1	Atom-2	Interatomic distance (Å)	Clash overlap (Å)
1:A:29:ILE:HD11	1:A:132:PRO:HG3	1.37	1.04
1:A:180:ASN:HD21	1:B:314:GLN:HE22	1.05	0.98
1:A:183:LYS:HE3	4:A:2047:HOH:O	1.63	0.97
1:A:211:ASN:HD22	1:A:212:ARG:H	1.25	0.82
1:A:314:GLN:HE22	1:B:180:ASN:HD21	1.26	0.80
1:A:218:VAL:HG22	1:A:333:MET:HE2	1.63	0.80
1:B:19:ASP:HB3	1:B:22:LYS:HD3	1.67	0.77
1:B:148:LEU:HD11	1:B:334:LEU:HB3	1.66	0.76
1:B:36:ASN:ND2	1:B:365:TRP:HE1	1.93	0.66
1:A:159:ILE:HD12	1:A:199:LEU:HD23	1.80	0.64
1:A:180:ASN:HD21	1:B:314:GLN:NE2	1.88	0.63
1:A:211:ASN:HD22	1:A:212:ARG:N	1.96	0.63
1:B:34:ILE:HG12	1:B:35:TYR:CE1	2.34	0.63
1:B:19:ASP:HB3	1:B:22:LYS:CD	2.29	0.63
1:A:148:LEU:HD11	1:A:334:LEU:HB3	1.80	0.62
1:A:1:MET:HG3	1:A:126:GLU:HB2	1.81	0.62
1:B:332:LYS:HE3	4:B:2071:HOH:O	1.99	0.62
1:B:158:SER:HB3	1:B:305:LEU:HD13	1.83	0.60
1:A:1:MET:HE2	1:A:127:TRP:CE2	2.39	0.58
1:B:189:THR:OG1	1:B:211:ASN:ND2	2.38	0.56
1:A:92:GLY:HA2	1:A:104:PRO:HB3	1.88	0.56
1:B:35:TYR:HA	1:B:363:ILE:O	2.05	0.55
1:B:29:ILE:HG13	1:B:132:PRO:HD3	1.89	0.54
1:A:15:VAL:HG21	1:A:347:LEU:HD23	1.89	0.54
1:B:212:ARG:HG2	1:B:234:SER:HA	1.89	0.53
1:B:339:VAL:HG13	1:B:346:GLU:CG	2.38	0.52

Continued on next page...

Continued from previous page...

Atom-1	Atom-2	Interatomic distance (Å)	Clash overlap (Å)
1:A:157:LYS:C	1:A:157:LYS:HD3	2.36	0.51
1:B:36:ASN:HD22	1:B:365:TRP:HE1	1.57	0.51
1:A:158:SER:HB3	1:A:305:LEU:HD13	1.93	0.50
1:A:131:ASP:OD1	1:A:132:PRO:HD2	2.12	0.50
1:B:157:LYS:C	1:B:157:LYS:HD3	2.36	0.49
1:B:292:LEU:O	1:B:296:VAL:HG23	2.13	0.49
1:A:348:LEU:O	1:A:352:ARG:HD2	2.13	0.49
1:A:188:GLY:O	1:A:193:GLY:HA3	2.13	0.49
1:B:160:GLU:O	1:B:164:GLU:HG3	2.12	0.49
1:A:191:PRO:O	1:A:195:LEU:HD12	2.13	0.48
1:B:339:VAL:HG13	1:B:346:GLU:HG2	1.95	0.48
1:A:29:ILE:O	1:A:129:TYR:HA	2.12	0.48
1:A:9:PRO:HG2	1:A:10:ASN:OD1	2.14	0.48
1:A:180:ASN:ND2	1:B:314:GLN:HE22	1.90	0.48
1:A:91:ARG:HG2	1:A:134:TYR:CE1	2.49	0.48
1:A:115:ALA:HA	1:A:120:MET:HB3	1.95	0.48
1:B:19:ASP:O	1:B:22:LYS:HG2	2.14	0.47
1:B:1:MET:HG2	1:B:126:GLU:HB2	1.97	0.47
1:B:73:GLU:O	1:B:81:GLN:HG3	2.15	0.47
1:A:19:ASP:OD1	1:A:21:LYS:HG3	2.15	0.47
1:B:69:ILE:HD11	1:B:147:ILE:N	2.31	0.46
1:A:20:GLU:H	1:A:20:GLU:HG2	1.40	0.45
1:A:7:LYS:HA	1:A:8:PRO:HD2	1.77	0.45
1:B:298:THR:OG1	1:B:300:LYS:HE3	2.17	0.45
1:B:337:LYS:HG2	1:B:361:ILE:HD12	1.98	0.44
1:A:29:ILE:CD1	1:A:132:PRO:HG3	2.28	0.44
1:B:188:GLY:O	1:B:193:GLY:HA3	2.17	0.44
1:A:118:HIS:NE2	1:A:119:LYS:HE2	2.32	0.44
1:A:34:ILE:HG12	1:A:35:TYR:CE2	2.51	0.44
1:A:198:LEU:HD23	1:A:226:THR:HG21	1.99	0.44
1:B:21:LYS:HE3	4:B:2004:HOH:O	2.18	0.44
1:B:339:VAL:CG1	1:B:346:GLU:HG3	2.48	0.44
1:A:13:VAL:HG21	1:A:351:LEU:HD13	2.00	0.43
1:A:314:GLN:NE2	1:B:180:ASN:HD21	2.05	0.43
1:B:45:ILE:HG13	1:B:50:LEU:HD12	1.99	0.43
1:B:159:ILE:HD12	1:B:199:LEU:HD23	2.01	0.43
1:B:1:MET:CE	1:B:20:GLU:HB2	2.48	0.43
1:B:189:THR:H	1:B:211:ASN:HD21	1.68	0.42
1:B:289:TYR:O	1:B:293:GLN:HB2	2.20	0.42
1:A:27:GLY:O	1:A:129:TYR:HB3	2.19	0.42
1:B:50:LEU:HD23	1:B:50:LEU:HA	1.94	0.42

Continued on next page...

Continued from previous page...

Atom-1	Atom-2	Interatomic distance (Å)	Clash overlap (Å)
1:B:127:TRP:CZ3	1:B:129:TYR:CE2	3.08	0.41
1:B:45:ILE:CG1	1:B:50:LEU:HD12	2.51	0.41
1:B:148:LEU:CD1	1:B:334:LEU:HD13	2.51	0.41
1:B:218:VAL:HG22	1:B:333:MET:HB3	2.02	0.41
1:B:309:GLN:O	1:B:313:PHE:HD1	2.03	0.41
1:A:80:SER:O	1:A:81:GLN:C	2.64	0.41
1:B:349:LYS:HA	1:B:349:LYS:HD2	1.89	0.41
1:B:1:MET:HE3	1:B:20:GLU:HB2	2.03	0.40
1:A:31:ILE:HG22	1:A:70:GLY:HA3	2.03	0.40
1:A:68:ALA:O	1:A:86:MET:HG3	2.22	0.40
1:A:220:GLN:HG3	1:A:224:GLU:OE2	2.21	0.40

There are no symmetry-related clashes.

5.3 Torsion angles [i](#)

5.3.1 Protein backbone [i](#)

In the following table, the Percentiles column shows the percent Ramachandran outliers of the chain as a percentile score with respect to all X-ray entries followed by that with respect to entries of similar resolution.

The Analysed column shows the number of residues for which the backbone conformation was analysed, and the total number of residues.

Mol	Chain	Analysed	Favoured	Allowed	Outliers	Percentiles	
1	A	356/366 (97%)	339 (95%)	13 (4%)	4 (1%)	11	11
1	B	355/366 (97%)	337 (95%)	17 (5%)	1 (0%)	36	44
All	All	711/732 (97%)	676 (95%)	30 (4%)	5 (1%)	18	21

All (5) Ramachandran outliers are listed below:

Mol	Chain	Res	Type
1	A	8	PRO
1	A	9	PRO
1	A	307	ASN
1	B	307	ASN
1	A	260	ILE

5.3.2 Protein sidechains [i](#)

In the following table, the Percentiles column shows the percent sidechain outliers of the chain as a percentile score with respect to all X-ray entries followed by that with respect to entries of similar resolution.

The Analysed column shows the number of residues for which the sidechain conformation was analysed, and the total number of residues.

Mol	Chain	Analysed	Rotameric	Outliers	Percentiles	
1	A	312/318 (98%)	301 (96%)	11 (4%)	32	45
1	B	311/318 (98%)	299 (96%)	12 (4%)	28	41
All	All	623/636 (98%)	600 (96%)	23 (4%)	30	43

All (23) residues with a non-rotameric sidechain are listed below:

Mol	Chain	Res	Type
1	A	16	LYS
1	A	20	GLU
1	A	29	ILE
1	A	34	ILE
1	A	71	VAL
1	A	140	LYS
1	A	211	ASN
1	A	239	LYS
1	A	281	THR
1	A	287	LEU
1	A	354	LYS
1	B	21	LYS
1	B	34	ILE
1	B	140	LYS
1	B	211	ASN
1	B	212	ARG
1	B	243	SER
1	B	244	VAL
1	B	281	THR
1	B	287	LEU
1	B	288	ASP
1	B	293	GLN
1	B	346	GLU

Sometimes sidechains can be flipped to improve hydrogen bonding and reduce clashes. All (13) such sidechains are listed below:

Mol	Chain	Res	Type
1	A	14	GLN
1	A	81	GLN
1	A	211	ASN
1	B	14	GLN
1	B	36	ASN
1	B	81	GLN
1	B	180	ASN
1	B	211	ASN
1	B	220	GLN
1	B	263	ASN
1	B	309	GLN
1	B	314	GLN
1	B	342	ASN

5.3.3 RNA [i](#)

There are no RNA molecules in this entry.

5.4 Non-standard residues in protein, DNA, RNA chains [i](#)

There are no non-standard protein/DNA/RNA residues in this entry.

5.5 Carbohydrates [i](#)

There are no oligosaccharides in this entry.

5.6 Ligand geometry [i](#)

Of 6 ligands modelled in this entry, 4 are monoatomic - leaving 2 for Mogul analysis.

In the following table, the Counts columns list the number of bonds (or angles) for which Mogul statistics could be retrieved, the number of bonds (or angles) that are observed in the model and the number of bonds (or angles) that are defined in the Chemical Component Dictionary. The Link column lists molecule types, if any, to which the group is linked. The Z score for a bond length (or angle) is the number of standard deviations the observed value is removed from the expected value. A bond length (or angle) with $|Z| > 2$ is considered an outlier worth inspection. RMSZ is the root-mean-square of all Z scores of the bond lengths (or angles).

Mol	Type	Chain	Res	Link	Bond lengths			Bond angles		
					Counts	RMSZ	# Z > 2	Counts	RMSZ	# Z > 2
2	NAP	A	1367	-	50,52,52	2.78	12 (24%)	71,80,80	1.71	15 (21%)
2	NAP	B	1367	-	50,52,52	2.45	10 (20%)	71,80,80	1.84	17 (23%)

In the following table, the Chirals column lists the number of chiral outliers, the number of chiral centers analysed, the number of these observed in the model and the number defined in the Chemical Component Dictionary. Similar counts are reported in the Torsion and Rings columns. '-' means no outliers of that kind were identified.

Mol	Type	Chain	Res	Link	Chirals	Torsions	Rings
2	NAP	A	1367	-	-	5/35/67/67	0/5/5/5
2	NAP	B	1367	-	-	7/35/67/67	0/5/5/5

All (22) bond length outliers are listed below:

Mol	Chain	Res	Type	Atoms	Z	Observed(Å)	Ideal(Å)
2	B	1367	NAP	P2B-O2B	11.14	1.79	1.59
2	A	1367	NAP	P2B-O2B	8.03	1.73	1.59
2	A	1367	NAP	PN-O3	7.88	1.68	1.59
2	A	1367	NAP	C2N-N1N	7.65	1.43	1.35
2	A	1367	NAP	PA-O3	7.48	1.67	1.59
2	B	1367	NAP	C2N-N1N	5.85	1.41	1.35
2	B	1367	NAP	P2B-O1X	5.80	1.68	1.50
2	A	1367	NAP	P2B-O1X	5.52	1.67	1.50
2	B	1367	NAP	O4D-C1D	5.32	1.47	1.40
2	A	1367	NAP	C3N-C7N	4.04	1.56	1.50
2	A	1367	NAP	C6N-N1N	3.86	1.44	1.35
2	B	1367	NAP	PA-O3	3.80	1.63	1.59
2	B	1367	NAP	PN-O3	3.78	1.63	1.59
2	A	1367	NAP	O4D-C1D	3.28	1.45	1.40
2	A	1367	NAP	C5A-N7A	-3.22	1.33	1.39
2	A	1367	NAP	P2B-O2X	2.99	1.65	1.54
2	B	1367	NAP	C6N-N1N	2.72	1.41	1.35
2	B	1367	NAP	P2B-O2X	2.63	1.64	1.54
2	B	1367	NAP	PN-O5D	2.57	1.69	1.59
2	A	1367	NAP	C4A-N9A	-2.52	1.32	1.37
2	B	1367	NAP	C5A-N7A	-2.34	1.34	1.39
2	A	1367	NAP	C5D-C4D	2.05	1.57	1.51

All (32) bond angle outliers are listed below:

Mol	Chain	Res	Type	Atoms	Z	Observed(°)	Ideal(°)
2	B	1367	NAP	N3A-C2A-N1A	-5.10	120.86	128.58
2	B	1367	NAP	C5A-C4A-N3A	-5.03	119.79	126.72
2	A	1367	NAP	N3A-C2A-N1A	-4.97	121.07	128.58
2	A	1367	NAP	C6N-N1N-C2N	-4.14	118.36	121.88
2	B	1367	NAP	C2A-N3A-C4A	3.99	121.59	111.83
2	A	1367	NAP	N9A-C8A-N7A	-3.99	108.27	113.94

Continued on next page...

Continued from previous page...

Mol	Chain	Res	Type	Atoms	Z	Observed(°)	Ideal(°)
2	A	1367	NAP	C5A-C4A-N3A	-3.99	121.22	126.72
2	B	1367	NAP	N9A-C8A-N7A	-3.74	108.63	113.94
2	A	1367	NAP	C4A-N9A-C8A	3.56	109.47	105.74
2	B	1367	NAP	C2B-C1B-N9A	3.38	119.32	113.75
2	B	1367	NAP	N3A-C4A-N9A	3.26	132.71	127.17
2	A	1367	NAP	N3A-C4A-N9A	3.25	132.70	127.17
2	B	1367	NAP	C5A-N7A-C8A	3.20	108.48	103.45
2	A	1367	NAP	O4B-C1B-N9A	-3.15	102.05	108.09
2	B	1367	NAP	C4A-C5A-N7A	-3.14	106.99	110.58
2	B	1367	NAP	O3-PA-O1A	-3.09	101.42	110.70
2	B	1367	NAP	O4D-C4D-C5D	-3.02	99.66	109.33
2	A	1367	NAP	C3B-C2B-C1B	-3.01	97.05	102.81
2	A	1367	NAP	C2A-N3A-C4A	2.98	119.11	111.83
2	A	1367	NAP	C5A-N7A-C8A	2.96	108.10	103.45
2	B	1367	NAP	C4D-O4D-C1D	-2.87	107.30	109.92
2	B	1367	NAP	O4B-C1B-N9A	-2.85	102.62	108.09
2	A	1367	NAP	C2A-N1A-C6A	2.60	123.00	118.73
2	A	1367	NAP	C3N-C7N-N7N	-2.59	114.54	117.74
2	B	1367	NAP	C4A-N9A-C8A	2.53	108.40	105.74
2	B	1367	NAP	C6N-N1N-C2N	-2.45	119.79	121.88
2	A	1367	NAP	O3X-P2B-O2B	2.41	115.22	105.85
2	B	1367	NAP	C5B-C4B-C3B	-2.39	106.60	115.21
2	B	1367	NAP	O3X-P2B-O2B	2.39	115.15	105.85
2	B	1367	NAP	O2A-PA-O1A	2.28	123.06	112.44
2	A	1367	NAP	C4A-C5A-N7A	-2.19	108.08	110.58
2	A	1367	NAP	C4B-O4B-C1B	-2.10	104.84	109.47

There are no chirality outliers.

All (12) torsion outliers are listed below:

Mol	Chain	Res	Type	Atoms
2	A	1367	NAP	O4D-C1D-N1N-C2N
2	A	1367	NAP	O4D-C1D-N1N-C6N
2	A	1367	NAP	C2D-C1D-N1N-C2N
2	A	1367	NAP	C2D-C1D-N1N-C6N
2	B	1367	NAP	C3B-C2B-O2B-P2B
2	B	1367	NAP	O4D-C1D-N1N-C2N
2	B	1367	NAP	O4D-C1D-N1N-C6N
2	B	1367	NAP	C2D-C1D-N1N-C2N
2	B	1367	NAP	C2D-C1D-N1N-C6N
2	A	1367	NAP	C3B-C2B-O2B-P2B
2	B	1367	NAP	C1B-C2B-O2B-P2B

Continued on next page...

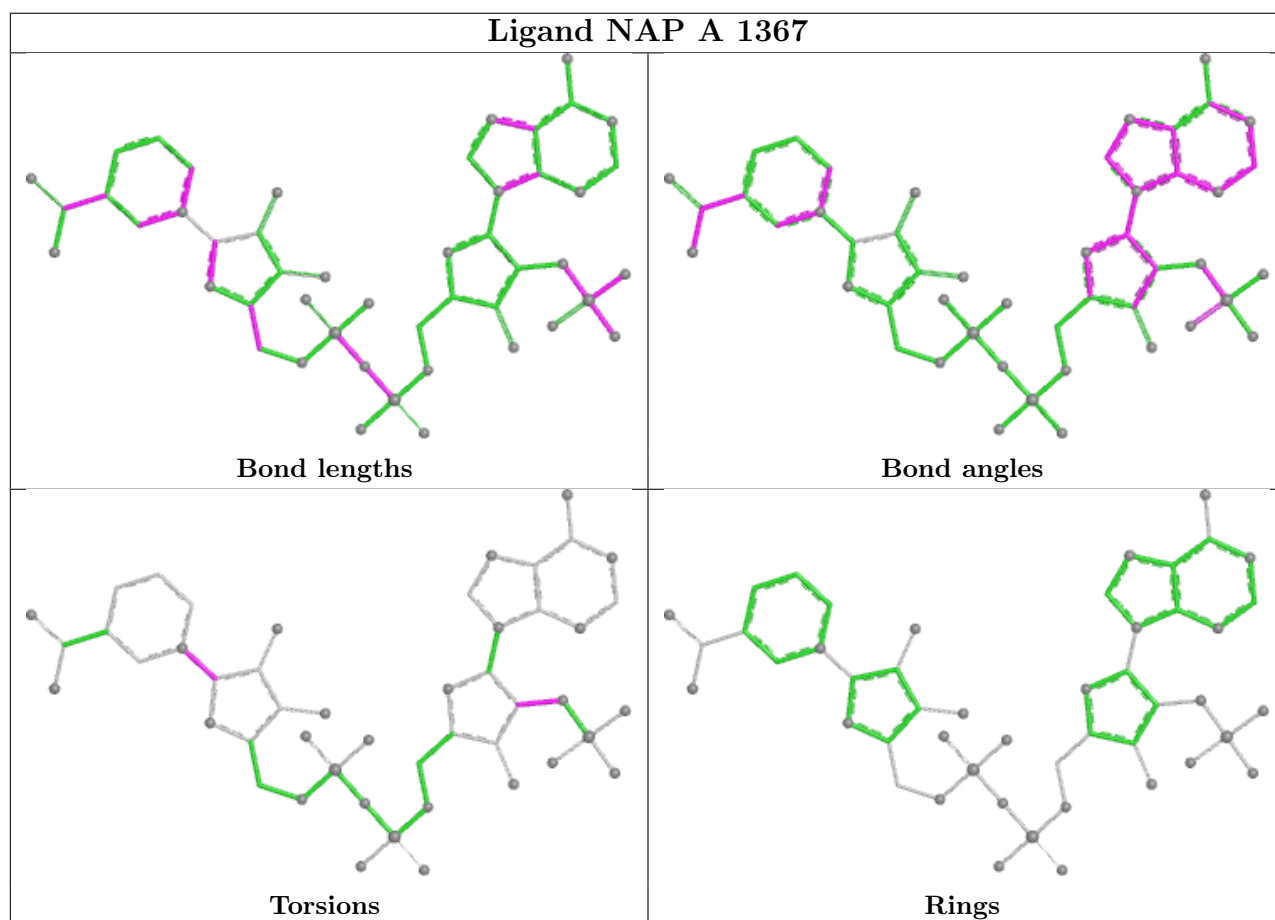
Continued from previous page...

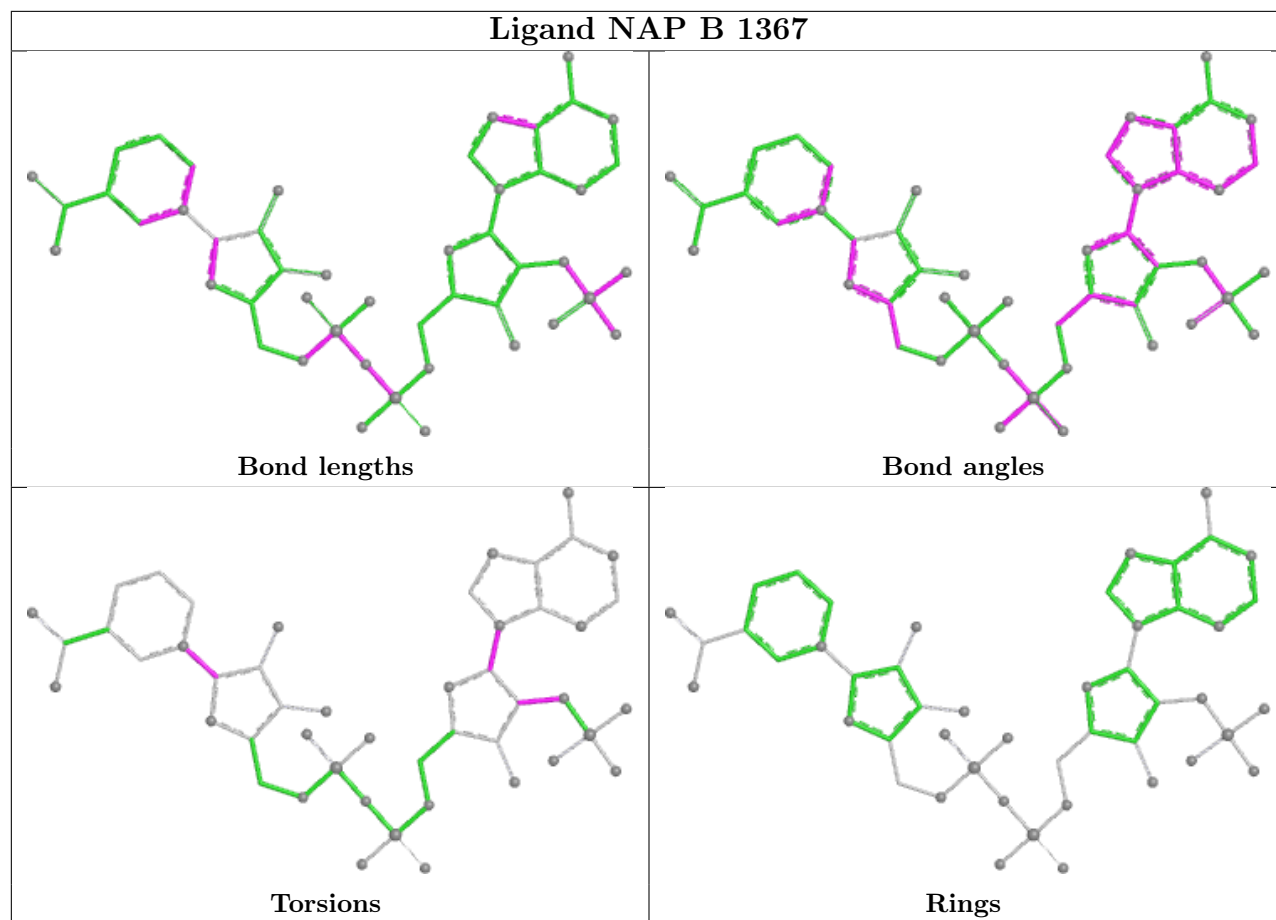
Mol	Chain	Res	Type	Atoms
2	B	1367	NAP	C2B-C1B-N9A-C8A

There are no ring outliers.

No monomer is involved in short contacts.

The following is a two-dimensional graphical depiction of Mogul quality analysis of bond lengths, bond angles, torsion angles, and ring geometry for all instances of the Ligand of Interest. In addition, ligands with molecular weight > 250 and outliers as shown on the validation Tables will also be included. For torsion angles, if less than 5% of the Mogul distribution of torsion angles is within 10 degrees of the torsion angle in question, then that torsion angle is considered an outlier. Any bond that is central to one or more torsion angles identified as an outlier by Mogul will be highlighted in the graph. For rings, the root-mean-square deviation (RMSD) between the ring in question and similar rings identified by Mogul is calculated over all ring torsion angles. If the average RMSD is greater than 60 degrees and the minimal RMSD between the ring in question and any Mogul-identified rings is also greater than 60 degrees, then that ring is considered an outlier. The outliers are highlighted in purple. The color gray indicates Mogul did not find sufficient equivalents in the CSD to analyse the geometry.





5.7 Other polymers [\(i\)](#)

There are no such residues in this entry.

5.8 Polymer linkage issues [\(i\)](#)

There are no chain breaks in this entry.

6 Fit of model and data [i](#)

6.1 Protein, DNA and RNA chains [i](#)

In the following table, the column labelled ‘#RSRZ > 2’ contains the number (and percentage) of RSRZ outliers, followed by percent RSRZ outliers for the chain as percentile scores relative to all X-ray entries and entries of similar resolution. The OWAB column contains the minimum, median, 95th percentile and maximum values of the occupancy-weighted average B-factor per residue. The column labelled ‘Q < 0.9’ lists the number of (and percentage) of residues with an average occupancy less than 0.9.

Mol	Chain	Analysed	<RSRZ>	#RSRZ>2	OWAB(Å ²)	Q<0.9
1	A	360/366 (98%)	-0.12	8 (2%) 62 64	4, 19, 37, 57	1 (0%)
1	B	359/366 (98%)	-0.11	5 (1%) 73 75	5, 19, 36, 44	0
All	All	719/732 (98%)	-0.11	13 (1%) 67 69	4, 19, 36, 57	1 (0%)

All (13) RSRZ outliers are listed below:

Mol	Chain	Res	Type	RSRZ
1	A	9	PRO	4.6
1	A	76	TYR	3.9
1	B	357	GLY	3.4
1	A	8	PRO	3.3
1	A	58	GLY	3.3
1	B	58	GLY	3.1
1	A	57	LYS	3.1
1	A	118	HIS	3.1
1	A	50	LEU	3.0
1	A	77	HIS	2.7
1	B	118	HIS	2.2
1	B	9	PRO	2.2
1	B	127	TRP	2.1

6.2 Non-standard residues in protein, DNA, RNA chains [i](#)

There are no non-standard protein/DNA/RNA residues in this entry.

6.3 Carbohydrates [i](#)

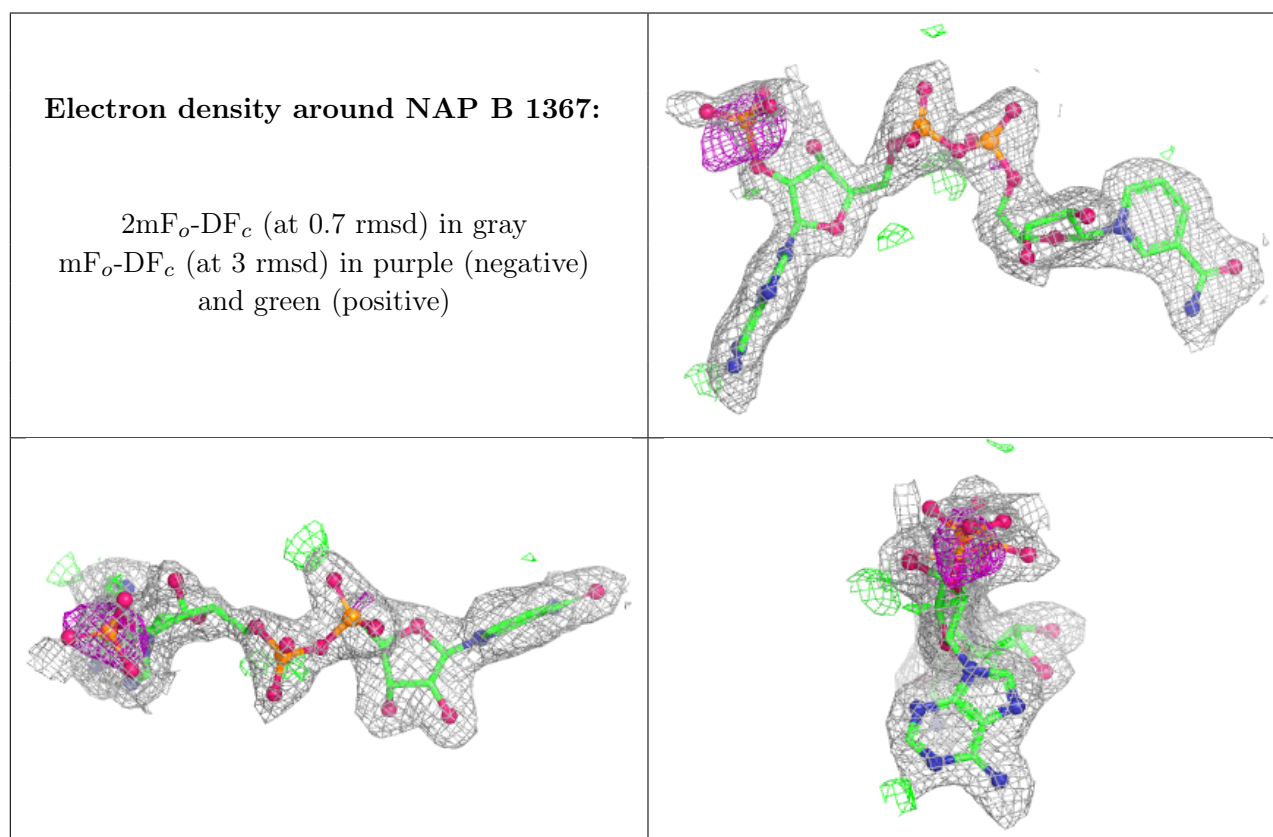
There are no oligosaccharides in this entry.

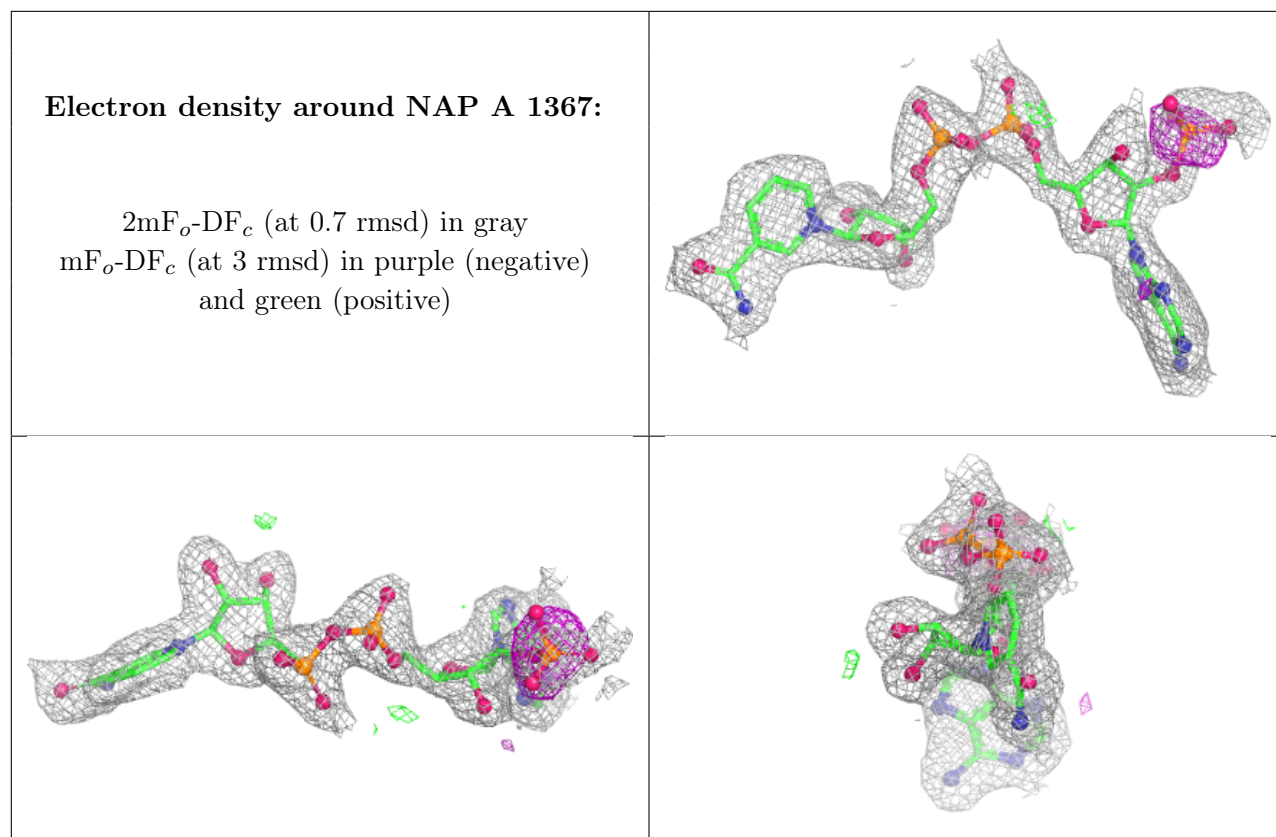
6.4 Ligands [i](#)

In the following table, the Atoms column lists the number of modelled atoms in the group and the number defined in the chemical component dictionary. The B-factors column lists the minimum, median, 95th percentile and maximum values of B factors of atoms in the group. The column labelled 'Q< 0.9' lists the number of atoms with occupancy less than 0.9.

Mol	Type	Chain	Res	Atoms	RSCC	RSR	B-factors(\AA^2)	Q<0.9
2	NAP	B	1367	48/48	0.93	0.10	16,24,46,48	0
2	NAP	A	1367	48/48	0.95	0.09	11,21,50,50	0
3	ZN	A	1368	1/1	0.98	0.03	35,35,35,35	1
3	ZN	B	1368	1/1	0.99	0.03	30,30,30,30	1
3	ZN	B	1369	1/1	0.99	0.04	19,19,19,19	0
3	ZN	A	1369	1/1	1.00	0.01	21,21,21,21	0

The following is a graphical depiction of the model fit to experimental electron density of all instances of the Ligand of Interest. In addition, ligands with molecular weight > 250 and outliers as shown on the geometry validation Tables will also be included. Each fit is shown from different orientation to approximate a three-dimensional view.





6.5 Other polymers [i](#)

There are no such residues in this entry.