



# wwPDB X-ray Structure Validation Summary Report ⓘ

Mar 8, 2026 – 01:39 PM UTC

PDB ID : 4CBB / pdb\_00004cbb  
Title : APO FORM OF BETAIN ALDEHYDE DEHYDROGENASE FROM *Pseudomonas aeruginosa*  
Authors : Gonzalez-Segura, L.; Diaz-Sanchez, A.G.; Munoz-Clares, R.A.  
Deposited on : 2013-10-11  
Resolution : 1.80 Å(reported)

This is a wwPDB X-ray Structure Validation Summary Report for a publicly released PDB entry.

We welcome your comments at [validation@mail.wwpdb.org](mailto:validation@mail.wwpdb.org)

A user guide is available at

<https://www.wwpdb.org/validation/2017/XrayValidationReportHelp>

with specific help available everywhere you see the ⓘ symbol.

The types of validation reports are described at

<http://www.wwpdb.org/validation/2017/FAQs#types>.

---

The following versions of software and data (see [references ⓘ](#)) were used in the production of this report:

MolProbity : 4-5-2 with Phenix2.0  
Mogul : 2022.3.0, CSD as543be (2022)  
Xtriage (Phenix) : 2.0  
EDS : 3.0  
Buster-report : wwPDB partial adaption of 1.1.7 (2018)  
Percentile statistics : 20250101.v01 (using entries in the PDB archive January 1st 2025)  
CCP4 : 9.0.010 (Gargrove)  
Density-Fitness : 1.0.12  
Ideal geometry (proteins) : Engh & Huber (2001)  
Ideal geometry (DNA, RNA) : Parkinson et al. (1996)  
Validation Pipeline (wwPDB-VP) : 2.49

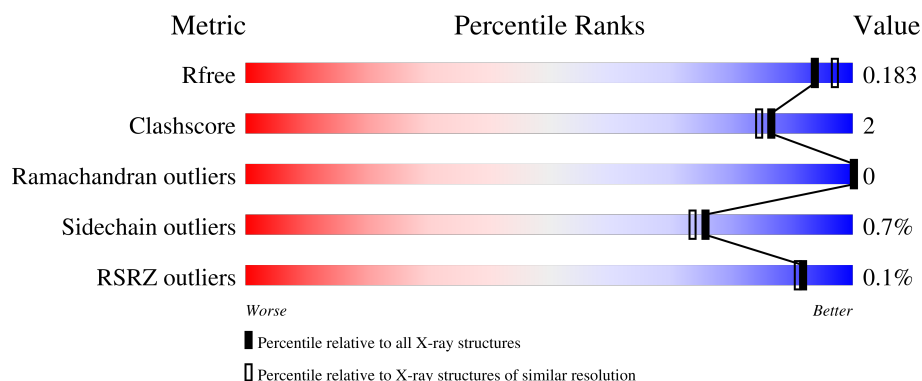
# 1 Overall quality at a glance

The following experimental techniques were used to determine the structure:

*X-RAY DIFFRACTION*

The reported resolution of this entry is 1.80 Å.

Percentile scores (ranging between 0-100) for global validation metrics of the entry are shown in the following graphic. The table shows the number of entries on which the scores are based.



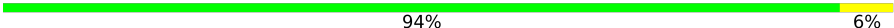
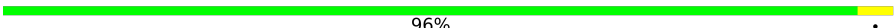

Metric	Whole archive (#Entries)	Similar resolution (#Entries, resolution range(Å))
$R_{free}$	180053	7662 (1.80-1.80)
Clashscore	190562	8479 (1.80-1.80)
Ramachandran outliers	187476	8391 (1.80-1.80)
Sidechain outliers	187428	8390 (1.80-1.80)
RSRZ outliers	180081	7663 (1.80-1.80)

The table below summarises the geometric issues observed across the polymeric chains and their fit to the electron density. The red, orange, yellow and green segments of the lower bar indicate the fraction of residues that contain outliers for  $\geq 3$ , 2, 1 and 0 types of geometric quality criteria respectively. A grey segment represents the fraction of residues that are not modelled. The numeric value for each fraction is indicated below the corresponding segment, with a dot representing fractions  $\leq 5\%$ . The upper red bar (where present) indicates the fraction of residues that have poor fit to the electron density. The numeric value is given above the bar.

Mol	Chain	Length	Quality of chain
1	A	489	<div> <div style="width: 95%;"></div> <div style="width: 5%;"></div> </div>
1	B	489	<div> <div style="width: 96%;"></div> <div style="width: 4%;"></div> </div>
1	C	489	<div> <div style="width: 93%;"></div> <div style="width: 7%;"></div> </div>
1	D	489	<div> <div style="width: 96%;"></div> <div style="width: 4%;"></div> </div>
1	E	489	<div> <div style="width: 97%;"></div> <div style="width: 3%;"></div> </div>

*Continued on next page...*

*Continued from previous page...*

Mol	Chain	Length	Quality of chain
1	F	489	 94% 6%
1	G	489	 96% •
1	H	489	 93% 7%

## 2 Entry composition

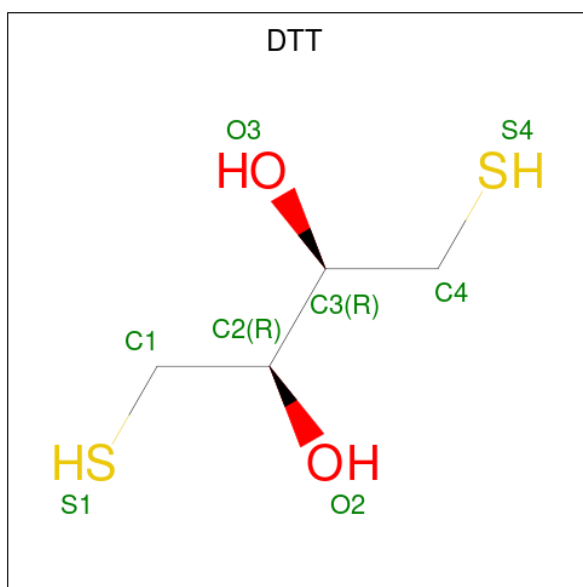
There are 7 unique types of molecules in this entry. The entry contains 34651 atoms, of which 0 are hydrogens and 0 are deuteriums.

In the tables below, the ZeroOcc column contains the number of atoms modelled with zero occupancy, the AltConf column contains the number of residues with at least one atom in alternate conformation and the Trace column contains the number of residues modelled with at most 2 atoms.

- Molecule 1 is a protein called BETAINE ALDEHYDE DEHYDROGENASE.

Mol	Chain	Residues	Atoms					ZeroOcc	AltConf	Trace
1	A	489	Total	C	N	O	S	0	12	0
			3839	2411	672	742	14			
1	B	489	Total	C	N	O	S	0	19	0
			3898	2440	689	755	14			
1	C	489	Total	C	N	O	S	0	9	0
			3816	2391	673	738	14			
1	D	489	Total	C	N	O	S	0	3	0
			3773	2368	666	725	14			
1	E	489	Total	C	N	O	S	0	9	0
			3816	2394	669	739	14			
1	F	489	Total	C	N	O	S	0	6	0
			3789	2378	664	733	14			
1	G	489	Total	C	N	O	S	0	9	0
			3829	2400	681	734	14			
1	H	489	Total	C	N	O	S	0	7	0
			3796	2383	664	735	14			

- Molecule 2 is 2,3-DIHYDROXY-1,4-DITHIOBUTANE (CCD ID: DTT) (formula: C<sub>4</sub>H<sub>10</sub>O<sub>2</sub>S<sub>2</sub>).



Mol	Chain	Residues	Atoms				ZeroOcc	AltConf
2	A	1	Total	C	O	S	0	0
			8	4	2	2		
2	B	1	Total	C	O	S	0	0
			8	4	2	2		
2	C	1	Total	C	O	S	0	0
			8	4	2	2		
2	D	1	Total	C	O	S	0	0
			8	4	2	2		
2	E	1	Total	C	O	S	0	0
			8	4	2	2		
2	F	1	Total	C	O	S	0	0
			8	4	2	2		
2	G	1	Total	C	O	S	0	0
			8	4	2	2		
2	H	1	Total	C	O	S	0	0
			8	4	2	2		

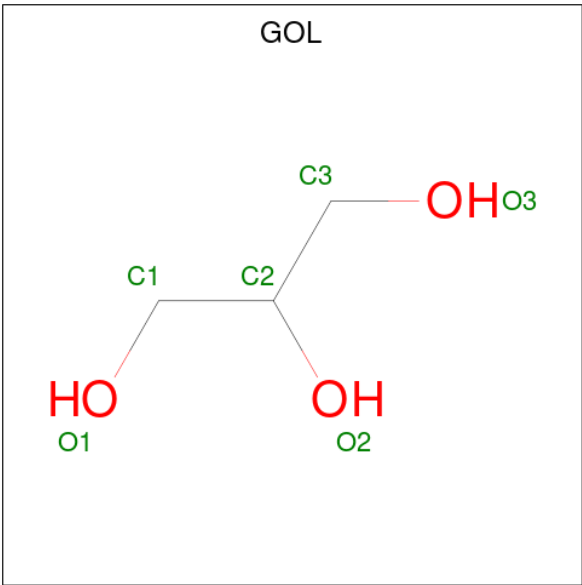
- Molecule 3 is 1,2-ETHANEDIOL (CCD ID: EDO) (formula: C<sub>2</sub>H<sub>6</sub>O<sub>2</sub>).



Mol	Chain	Residues	Atoms			ZeroOcc	AltConf
3	A	1	Total	C	O	0	0
			4	2	2		
3	B	1	Total	C	O	0	0
			4	2	2		
3	C	1	Total	C	O	0	0
			4	2	2		
3	C	1	Total	C	O	0	0
			4	2	2		
3	D	1	Total	C	O	0	0
			4	2	2		
3	D	1	Total	C	O	0	0
			4	2	2		
3	E	1	Total	C	O	0	0
			4	2	2		
3	F	1	Total	C	O	0	0
			4	2	2		
3	G	1	Total	C	O	0	0
			4	2	2		
3	G	1	Total	C	O	0	0
			4	2	2		

- Molecule 4 is 2-{2-[2-(2-{2-[2-(2-ETHOXY-ETHOXY)-ETHOXY]-ETHOXY}-ETHOXY)-ETHOXY]-ETHOXY}-ETHANOL (CCD ID: PE4) (formula: C<sub>16</sub>H<sub>34</sub>O<sub>8</sub>).





Mol	Chain	Residues	Atoms			ZeroOcc	AltConf
5	A	1	Total	C	O	0	0
			6	3	3		
5	A	1	Total	C	O	0	0
			6	3	3		
5	A	1	Total	C	O	0	0
			6	3	3		
5	B	1	Total	C	O	0	0
			6	3	3		
5	B	1	Total	C	O	0	0
			6	3	3		
5	B	1	Total	C	O	0	0
			6	3	3		
5	B	1	Total	C	O	0	0
			6	3	3		
5	C	1	Total	C	O	0	0
			6	3	3		
5	C	1	Total	C	O	0	0
			6	3	3		
5	C	1	Total	C	O	0	0
			6	3	3		
5	C	1	Total	C	O	0	0
			6	3	3		
5	D	1	Total	C	O	0	0
			6	3	3		
5	D	1	Total	C	O	0	0
			6	3	3		

Continued on next page...

*Continued from previous page...*

Mol	Chain	Residues	Atoms	ZeroOcc	AltConf
5	E	1	Total C O 6 3 3	0	0
5	E	1	Total C O 6 3 3	0	0
5	F	1	Total C O 6 3 3	0	0
5	F	1	Total C O 6 3 3	0	0
5	G	1	Total C O 6 3 3	0	0
5	G	1	Total C O 6 3 3	0	0
5	G	1	Total C O 6 3 3	0	0
5	H	1	Total C O 6 3 3	0	0

- Molecule 6 is POTASSIUM ION (CCD ID: K) (formula: K).

Mol	Chain	Residues	Atoms	ZeroOcc	AltConf
6	A	3	Total K 3 3	0	0
6	B	3	Total K 3 3	0	0
6	C	3	Total K 3 3	0	0
6	D	3	Total K 3 3	0	0
6	E	3	Total K 3 3	0	0
6	F	3	Total K 3 3	0	0
6	G	3	Total K 3 3	0	0
6	H	3	Total K 3 3	0	0

- Molecule 7 is water.

Mol	Chain	Residues	Atoms	ZeroOcc	AltConf
7	A	601	Total O 601 601	0	0

*Continued on next page...*

*Continued from previous page...*

Mol	Chain	Residues	Atoms		ZeroOcc	AltConf
7	B	469	Total 469	O 469	0	0
7	C	435	Total 435	O 435	0	0
7	D	393	Total 393	O 393	0	0
7	E	524	Total 524	O 524	0	0
7	F	438	Total 438	O 438	0	0
7	G	484	Total 484	O 484	0	0
7	H	299	Total 299	O 299	0	0

### 3 Residue-property plots

These plots are drawn for all protein, RNA, DNA and oligosaccharide chains in the entry. The first graphic for a chain summarises the proportions of the various outlier classes displayed in the second graphic. The second graphic shows the sequence view annotated by issues in geometry and electron density. Residues are color-coded according to the number of geometric quality criteria for which they contain at least one outlier: green = 0, yellow = 1, orange = 2 and red = 3 or more. A red dot above a residue indicates a poor fit to the electron density ( $RSRZ > 2$ ). Stretches of 2 or more consecutive residues without any outlier are shown as a green connector. Residues present in the sample, but not in the model, are shown in grey.

- Molecule 1: BETAINE ALDEHYDE DEHYDROGENASE

Chain A:  95% 5%



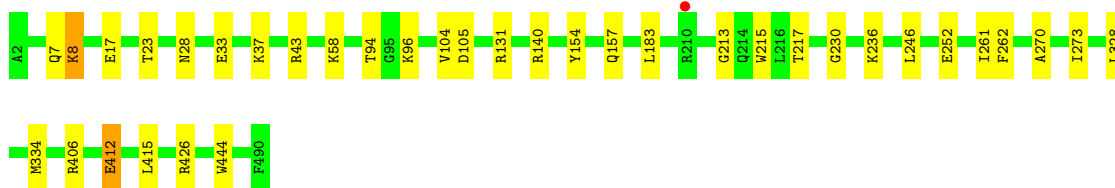
- Molecule 1: BETAINE ALDEHYDE DEHYDROGENASE

Chain B:  96% .



- Molecule 1: BETAINE ALDEHYDE DEHYDROGENASE

Chain C:  93% 7%



- Molecule 1: BETAINE ALDEHYDE DEHYDROGENASE

Chain D:  96% .



- Molecule 1: BETAINE ALDEHYDE DEHYDROGENASE

Chain E:  97% .



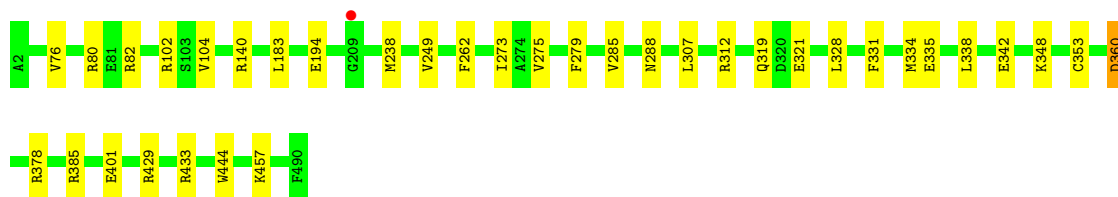
## ● Molecule 1: BETAINE ALDEHYDE DEHYDROGENASE

Chain F:  94% 6%

## ● Molecule 1: BETAINE ALDEHYDE DEHYDROGENASE

Chain G:  96% .

## ● Molecule 1: BETAINE ALDEHYDE DEHYDROGENASE

Chain H:  93% 7%

## 4 Data and refinement statistics

Property	Value	Source
Space group	C 1 2 1	Depositor
Cell constants a, b, c, $\alpha$ , $\beta$ , $\gamma$	332.32Å 131.34Å 100.81Å 90.00° 95.02° 90.00°	Depositor
Resolution (Å)	29.82 – 1.80 29.82 – 1.80	Depositor EDS
% Data completeness (in resolution range)	98.7 (29.82-1.80) 98.6 (29.82-1.80)	Depositor EDS
$R_{merge}$	0.08	Depositor
$R_{sym}$	(Not available)	Depositor
$\langle I/\sigma(I) \rangle$ <sup>1</sup>	2.18 (at 1.80Å)	Xtriage
Refinement program	PHENIX (PHENIX.REFINE)	Depositor
R, $R_{free}$	0.147 , 0.183 0.147 , 0.183	Depositor DCC
$R_{free}$ test set	19716 reflections (5.03%)	wwPDB-VP
Wilson B-factor (Å <sup>2</sup> )	17.2	Xtriage
Anisotropy	0.039	Xtriage
Bulk solvent $k_{sol}$ (e/Å <sup>3</sup> ), $B_{sol}$ (Å <sup>2</sup> )	0.36 , 52.0	EDS
L-test for twinning <sup>2</sup>	$\langle  L  \rangle = 0.44$ , $\langle L^2 \rangle = 0.27$	Xtriage
Estimated twinning fraction	No twinning to report.	Xtriage
$F_o, F_c$ correlation	0.96	EDS
Total number of atoms	34651	wwPDB-VP
Average B, all atoms (Å <sup>2</sup> )	23.0	wwPDB-VP

Xtriage's analysis on translational NCS is as follows: *The largest off-origin peak in the Patterson function is 2.56% of the height of the origin peak. No significant pseudotranslation is detected.*

<sup>1</sup>Intensities estimated from amplitudes.

<sup>2</sup>Theoretical values of  $\langle |L| \rangle$ ,  $\langle L^2 \rangle$  for acentric reflections are 0.5, 0.333 respectively for untwinned datasets, and 0.375, 0.2 for perfectly twinned datasets.

## 5 Model quality [i](#)

### 5.1 Standard geometry [i](#)

Bond lengths and bond angles in the following residue types are not validated in this section: PE4, GOL, EDO, DTT, K

The Z score for a bond length (or angle) is the number of standard deviations the observed value is removed from the expected value. A bond length (or angle) with  $|Z| > 5$  is considered an outlier worth inspection. RMSZ is the root-mean-square of all Z scores of the bond lengths (or angles).

Mol	Chain	Bond lengths		Bond angles	
		RMSZ	$\# Z  > 5$	RMSZ	$\# Z  > 5$
1	A	0.43	0/3907	0.75	1/5295 (0.0%)
1	B	0.41	0/3966	0.74	1/5372 (0.0%)
1	C	0.39	0/3884	0.75	1/5262 (0.0%)
1	D	0.40	0/3841	0.75	3/5204 (0.1%)
1	E	0.39	0/3884	0.74	1/5263 (0.0%)
1	F	0.39	0/3857	0.73	2/5227 (0.0%)
1	G	0.40	0/3897	0.74	0/5277
1	H	0.37	0/3864	0.73	2/5237 (0.0%)
All	All	0.40	0/31100	0.74	11/42137 (0.0%)

There are no bond length outliers.

The worst 5 of 11 bond angle outliers are listed below:

Mol	Chain	Res	Type	Atoms	Z	Observed(°)	Ideal(°)
1	H	457	LYS	CB-CA-C	-6.20	109.44	116.63
1	A	183	LEU	N-CA-C	5.89	117.50	111.14
1	H	183	LEU	N-CA-C	5.61	117.20	111.14
1	D	183	LEU	N-CA-C	5.53	117.11	111.14
1	D	460	GLY	N-CA-C	5.45	118.53	110.63

There are no chirality outliers.

There are no planarity outliers.

### 5.2 Too-close contacts [i](#)

In the following table, the Non-H and H(model) columns list the number of non-hydrogen atoms and hydrogen atoms in the chain respectively. The H(added) column lists the number of hydrogen atoms added and optimized by MolProbity. The Clashes column lists the number of clashes within the asymmetric unit, whereas Symm-Clashes lists symmetry-related clashes.

Mol	Chain	Non-H	H(model)	H(added)	Clashes	Symm-Clashes
1	A	3839	0	3803	15	0
1	B	3898	0	3852	14	0
1	C	3816	0	3776	23	0
1	D	3773	0	3746	11	0
1	E	3816	0	3775	10	0
1	F	3789	0	3752	15	0
1	G	3829	0	3801	9	0
1	H	3796	0	3758	18	0
2	A	8	0	9	0	0
2	B	8	0	9	1	0
2	C	8	0	9	1	0
2	D	8	0	9	1	0
2	E	8	0	9	0	0
2	F	8	0	9	1	0
2	G	8	0	9	0	0
2	H	8	0	9	0	0
3	A	4	0	6	0	0
3	B	4	0	6	0	0
3	C	8	0	12	2	0
3	D	8	0	12	0	0
3	E	4	0	6	0	0
3	F	4	0	6	0	0
3	G	8	0	12	1	0
4	A	24	0	32	3	0
4	B	24	0	34	1	0
4	C	24	0	32	4	0
4	D	24	0	32	2	0
4	E	24	0	34	0	0
4	F	24	0	34	1	0
4	G	24	0	32	1	0
4	H	24	0	33	1	0
5	A	18	0	24	4	0
5	B	30	0	40	3	0
5	C	24	0	32	1	0
5	D	12	0	16	0	0
5	E	12	0	16	0	0
5	F	12	0	16	0	0
5	G	18	0	24	4	0
5	H	6	0	8	0	0
6	A	3	0	0	0	0
6	B	3	0	0	0	0
6	C	3	0	0	0	0
6	D	3	0	0	0	0

Continued on next page...

*Continued from previous page...*

Mol	Chain	Non-H	H(model)	H(added)	Clashes	Symm-Clashes
6	E	3	0	0	0	0
6	F	3	0	0	0	0
6	G	3	0	0	0	0
6	H	3	0	0	0	0
7	A	601	0	0	6	0
7	B	469	0	0	5	0
7	C	435	0	0	5	0
7	D	393	0	0	3	0
7	E	524	0	0	5	0
7	F	438	0	0	2	0
7	G	484	0	0	4	0
7	H	299	0	0	3	0
All	All	34651	0	30834	127	0

The all-atom clashscore is defined as the number of clashes found per 1000 atoms (including hydrogen atoms). The all-atom clashscore for this structure is 2.

The worst 5 of 127 close contacts within the same asymmetric unit are listed below, sorted by their clash magnitude.

Atom-1	Atom-2	Interatomic distance (Å)	Clash overlap (Å)
1:G:429:ARG:HD3	5:G:1496:GOL:H32	1.57	0.85
1:A:176:LYS:HD2	1:A:212[A]:VAL:HG23	1.69	0.73
1:C:8:LYS:NZ	1:C:17:GLU:OE2	2.26	0.66
1:B:385[B]:ARG:NH1	7:B:2410:HOH:O	2.29	0.65
5:B:1497:GOL:O2	7:B:2464:HOH:O	2.15	0.65

There are no symmetry-related clashes.

## 5.3 Torsion angles [i](#)

### 5.3.1 Protein backbone [i](#)

In the following table, the Percentiles column shows the percent Ramachandran outliers of the chain as a percentile score with respect to all X-ray entries followed by that with respect to entries of similar resolution.

The Analysed column shows the number of residues for which the backbone conformation was analysed, and the total number of residues.

Mol	Chain	Analysed	Favoured	Allowed	Outliers	Percentiles	
1	A	499/489 (102%)	487 (98%)	12 (2%)	0	100	100
1	B	506/489 (104%)	493 (97%)	13 (3%)	0	100	100
1	C	496/489 (101%)	483 (97%)	13 (3%)	0	100	100
1	D	490/489 (100%)	479 (98%)	11 (2%)	0	100	100
1	E	496/489 (101%)	484 (98%)	12 (2%)	0	100	100
1	F	493/489 (101%)	482 (98%)	11 (2%)	0	100	100
1	G	496/489 (101%)	483 (97%)	13 (3%)	0	100	100
1	H	494/489 (101%)	482 (98%)	12 (2%)	0	100	100
All	All	3970/3912 (102%)	3873 (98%)	97 (2%)	0	100	100

There are no Ramachandran outliers to report.

### 5.3.2 Protein sidechains ⓘ

In the following table, the Percentiles column shows the percent sidechain outliers of the chain as a percentile score with respect to all X-ray entries followed by that with respect to entries of similar resolution.

The Analysed column shows the number of residues for which the sidechain conformation was analysed, and the total number of residues.

Mol	Chain	Analysed	Rotameric	Outliers	Percentiles	
1	A	402/390 (103%)	402 (100%)	0	100	100
1	B	409/390 (105%)	405 (99%)	4 (1%)	68	64
1	C	399/390 (102%)	395 (99%)	4 (1%)	68	64
1	D	393/390 (101%)	392 (100%)	1 (0%)	86	86
1	E	399/390 (102%)	397 (100%)	2 (0%)	81	80
1	F	396/390 (102%)	391 (99%)	5 (1%)	61	54
1	G	399/390 (102%)	394 (99%)	5 (1%)	61	54
1	H	397/390 (102%)	391 (98%)	6 (2%)	57	49
All	All	3194/3120 (102%)	3167 (99%)	27 (1%)	76	70

5 of 27 residues with a non-rotameric sidechain are listed below:

Mol	Chain	Res	Type
1	F	412[A]	GLU
1	G	356	GLU

*Continued on next page...*

*Continued from previous page...*

Mol	Chain	Res	Type
1	H	360	ASP
1	G	307	LEU
1	G	360	ASP

Sometimes sidechains can be flipped to improve hydrogen bonding and reduce clashes. 5 of 8 such sidechains are listed below:

Mol	Chain	Res	Type
1	H	214	GLN
1	G	127	GLN
1	E	214	GLN
1	D	7	GLN
1	F	127	GLN

### 5.3.3 RNA [i](#)

There are no RNA molecules in this entry.

## 5.4 Non-standard residues in protein, DNA, RNA chains [i](#)

There are no non-standard protein/DNA/RNA residues in this entry.

## 5.5 Carbohydrates [i](#)

There are no oligosaccharides in this entry.

## 5.6 Ligand geometry [i](#)

Of 72 ligands modelled in this entry, 24 are monoatomic - leaving 48 for Mogul analysis.

In the following table, the Counts columns list the number of bonds (or angles) for which Mogul statistics could be retrieved, the number of bonds (or angles) that are observed in the model and the number of bonds (or angles) that are defined in the Chemical Component Dictionary. The Link column lists molecule types, if any, to which the group is linked. The Z score for a bond length (or angle) is the number of standard deviations the observed value is removed from the expected value. A bond length (or angle) with  $|Z| > 2$  is considered an outlier worth inspection. RMSZ is the root-mean-square of all Z scores of the bond lengths (or angles).

Mol	Type	Chain	Res	Link	Bond lengths			Bond angles		
					Counts	RMSZ	$\# Z  > 2$	Counts	RMSZ	$\# Z  > 2$
5	GOL	A	1495	-	5,5,5	0.33	0	5,5,5	0.21	0

Mol	Type	Chain	Res	Link	Bond lengths			Bond angles		
					Counts	RMSZ	# Z  > 2	Counts	RMSZ	# Z  > 2
5	GOL	C	1495	-	5,5,5	0.39	0	5,5,5	0.27	0
4	PE4	F	1493	6	23,23,23	0.51	0	22,22,22	0.24	0
5	GOL	D	1496	-	5,5,5	0.27	0	5,5,5	0.29	0
2	DTT	A	1491	1	7,7,7	1.19	1 (14%)	4,8,8	2.63	3 (75%)
5	GOL	G	1495	-	5,5,5	0.27	0	5,5,5	0.42	0
5	GOL	A	1494	-	5,5,5	0.28	0	5,5,5	0.53	0
3	EDO	G	1493	-	3,3,3	0.44	0	2,2,2	0.16	0
5	GOL	C	1496	-	5,5,5	0.38	0	5,5,5	0.26	0
5	GOL	B	1497	-	5,5,5	0.22	0	5,5,5	0.84	0
2	DTT	E	1491	1	7,7,7	1.14	1 (14%)	4,8,8	2.24	2 (50%)
3	EDO	D	1492	-	3,3,3	0.47	0	2,2,2	0.34	0
4	PE4	H	1492	6	23,23,23	0.52	0	22,22,22	0.18	0
3	EDO	E	1492	-	3,3,3	0.45	0	2,2,2	0.38	0
5	GOL	B	1495	-	5,5,5	0.24	0	5,5,5	0.39	0
5	GOL	E	1494	-	5,5,5	0.31	0	5,5,5	0.28	0
3	EDO	C	1492	-	3,3,3	0.47	0	2,2,2	0.43	0
2	DTT	C	1491	1	7,7,7	1.27	1 (14%)	4,8,8	2.20	1 (25%)
3	EDO	G	1492	-	3,3,3	0.40	0	2,2,2	0.45	0
4	PE4	E	1493	6	23,23,23	0.51	0	22,22,22	0.27	0
5	GOL	C	1497	-	5,5,5	0.22	0	5,5,5	0.55	0
3	EDO	A	1492	-	3,3,3	0.44	0	2,2,2	0.35	0
5	GOL	B	1498	-	5,5,5	0.26	0	5,5,5	0.29	0
4	PE4	B	1493	6	23,23,23	0.50	0	22,22,22	0.27	0
5	GOL	G	1496	-	5,5,5	0.20	0	5,5,5	0.32	0
5	GOL	A	1496	-	5,5,5	0.07	0	5,5,5	0.68	0
3	EDO	D	1493	-	3,3,3	0.45	0	2,2,2	0.39	0
5	GOL	C	1498	-	5,5,5	0.33	0	5,5,5	0.33	0
3	EDO	F	1492	-	3,3,3	0.46	0	2,2,2	0.31	0
4	PE4	A	1493	6	23,23,23	0.58	0	22,22,22	0.34	0
3	EDO	B	1492	-	3,3,3	0.46	0	2,2,2	0.36	0
2	DTT	F	1491	1	7,7,7	1.17	1 (14%)	4,8,8	1.80	1 (25%)
3	EDO	C	1493	-	3,3,3	0.46	0	2,2,2	0.44	0
4	PE4	C	1494	6	23,23,23	0.51	0	22,22,22	0.33	0
5	GOL	E	1495	-	5,5,5	0.37	0	5,5,5	0.58	0
4	PE4	D	1494	6	23,23,23	0.54	0	22,22,22	0.37	0
5	GOL	F	1494	-	5,5,5	0.36	0	5,5,5	0.23	0
5	GOL	B	1494	-	5,5,5	0.32	0	5,5,5	0.27	0
2	DTT	B	1491	1	7,7,7	1.28	1 (14%)	4,8,8	2.52	3 (75%)
2	DTT	D	1491	1	7,7,7	1.02	1 (14%)	4,8,8	1.99	1 (25%)
4	PE4	G	1494	6	23,23,23	0.53	0	22,22,22	0.24	0
5	GOL	F	1495	-	5,5,5	0.27	0	5,5,5	0.30	0

Mol	Type	Chain	Res	Link	Bond lengths			Bond angles		
					Counts	RMSZ	# Z  > 2	Counts	RMSZ	# Z  > 2
2	DTT	H	1491	1	7,7,7	1.04	1 (14%)	4,8,8	1.88	1 (25%)
5	GOL	H	1493	-	5,5,5	0.13	0	5,5,5	0.56	0
5	GOL	D	1495	-	5,5,5	0.36	0	5,5,5	0.40	0
2	DTT	G	1491	1	7,7,7	1.31	1 (14%)	4,8,8	1.95	1 (25%)
5	GOL	B	1496	-	5,5,5	0.30	0	5,5,5	0.37	0
5	GOL	G	1497	-	5,5,5	0.23	0	5,5,5	0.47	0

In the following table, the Chirals column lists the number of chiral outliers, the number of chiral centers analysed, the number of these observed in the model and the number defined in the Chemical Component Dictionary. Similar counts are reported in the Torsion and Rings columns. '-' means no outliers of that kind were identified.

Mol	Type	Chain	Res	Link	Chirals	Torsions	Rings
5	GOL	A	1495	-	-	2/4/4/4	-
5	GOL	C	1495	-	-	1/4/4/4	-
4	PE4	F	1493	6	-	10/21/21/21	-
5	GOL	D	1496	-	-	4/4/4/4	-
2	DTT	A	1491	1	-	3/8/8/8	-
5	GOL	G	1495	-	-	0/4/4/4	-
5	GOL	A	1494	-	-	2/4/4/4	-
3	EDO	G	1493	-	-	0/1/1/1	-
5	GOL	C	1496	-	-	2/4/4/4	-
5	GOL	B	1497	-	-	2/4/4/4	-
2	DTT	E	1491	1	-	4/8/8/8	-
3	EDO	D	1492	-	-	0/1/1/1	-
4	PE4	H	1492	6	-	6/21/21/21	-
3	EDO	E	1492	-	-	1/1/1/1	-
5	GOL	B	1495	-	-	2/4/4/4	-
5	GOL	E	1494	-	-	2/4/4/4	-
3	EDO	C	1492	-	-	0/1/1/1	-
2	DTT	C	1491	1	-	0/8/8/8	-
3	EDO	G	1492	-	-	0/1/1/1	-
4	PE4	E	1493	6	-	3/21/21/21	-
5	GOL	C	1497	-	-	0/4/4/4	-
3	EDO	A	1492	-	-	0/1/1/1	-
5	GOL	B	1498	-	-	2/4/4/4	-
4	PE4	B	1493	6	-	7/21/21/21	-
5	GOL	G	1496	-	-	0/4/4/4	-
5	GOL	A	1496	-	-	2/4/4/4	-

Continued on next page...

*Continued from previous page...*

Mol	Type	Chain	Res	Link	Chirals	Torsions	Rings
3	EDO	D	1493	-	-	1/1/1/1	-
5	GOL	C	1498	-	-	1/4/4/4	-
3	EDO	F	1492	-	-	1/1/1/1	-
4	PE4	A	1493	6	-	7/21/21/21	-
3	EDO	B	1492	-	-	0/1/1/1	-
2	DTT	F	1491	1	-	0/8/8/8	-
3	EDO	C	1493	-	-	1/1/1/1	-
4	PE4	C	1494	6	-	11/21/21/21	-
5	GOL	E	1495	-	-	2/4/4/4	-
4	PE4	D	1494	6	-	14/21/21/21	-
5	GOL	F	1494	-	-	0/4/4/4	-
5	GOL	B	1494	-	-	1/4/4/4	-
2	DTT	B	1491	1	-	5/8/8/8	-
2	DTT	D	1491	1	-	3/8/8/8	-
4	PE4	G	1494	6	-	12/21/21/21	-
5	GOL	F	1495	-	-	0/4/4/4	-
2	DTT	H	1491	1	-	3/8/8/8	-
5	GOL	H	1493	-	-	2/4/4/4	-
5	GOL	D	1495	-	-	4/4/4/4	-
2	DTT	G	1491	1	-	3/8/8/8	-
5	GOL	B	1496	-	-	2/4/4/4	-
5	GOL	G	1497	-	-	4/4/4/4	-

The worst 5 of 8 bond length outliers are listed below:

Mol	Chain	Res	Type	Atoms	Z	Observed(Å)	Ideal(Å)
2	G	1491	DTT	C4-S4	-3.39	1.74	1.81
2	B	1491	DTT	C4-S4	-3.33	1.74	1.81
2	C	1491	DTT	C4-S4	-3.32	1.74	1.81
2	A	1491	DTT	C4-S4	-3.08	1.75	1.81
2	F	1491	DTT	C4-S4	-3.06	1.75	1.81

The worst 5 of 13 bond angle outliers are listed below:

Mol	Chain	Res	Type	Atoms	Z	Observed(°)	Ideal(°)
2	B	1491	DTT	C3-C4-S4	-3.81	103.80	114.43
2	A	1491	DTT	C3-C4-S4	-3.64	104.27	114.43
2	C	1491	DTT	C3-C4-S4	-3.52	104.59	114.43
2	H	1491	DTT	C3-C4-S4	-3.43	104.86	114.43

*Continued on next page...*

*Continued from previous page...*

Mol	Chain	Res	Type	Atoms	Z	Observed(°)	Ideal(°)
2	G	1491	DTT	C3-C4-S4	-3.31	105.20	114.43

There are no chirality outliers.

5 of 132 torsion outliers are listed below:

Mol	Chain	Res	Type	Atoms
2	A	1491	DTT	C1-C2-C3-O3
2	A	1491	DTT	O2-C2-C3-O3
2	A	1491	DTT	O2-C2-C3-C4
2	B	1491	DTT	C1-C2-C3-O3
2	B	1491	DTT	O2-C2-C3-O3

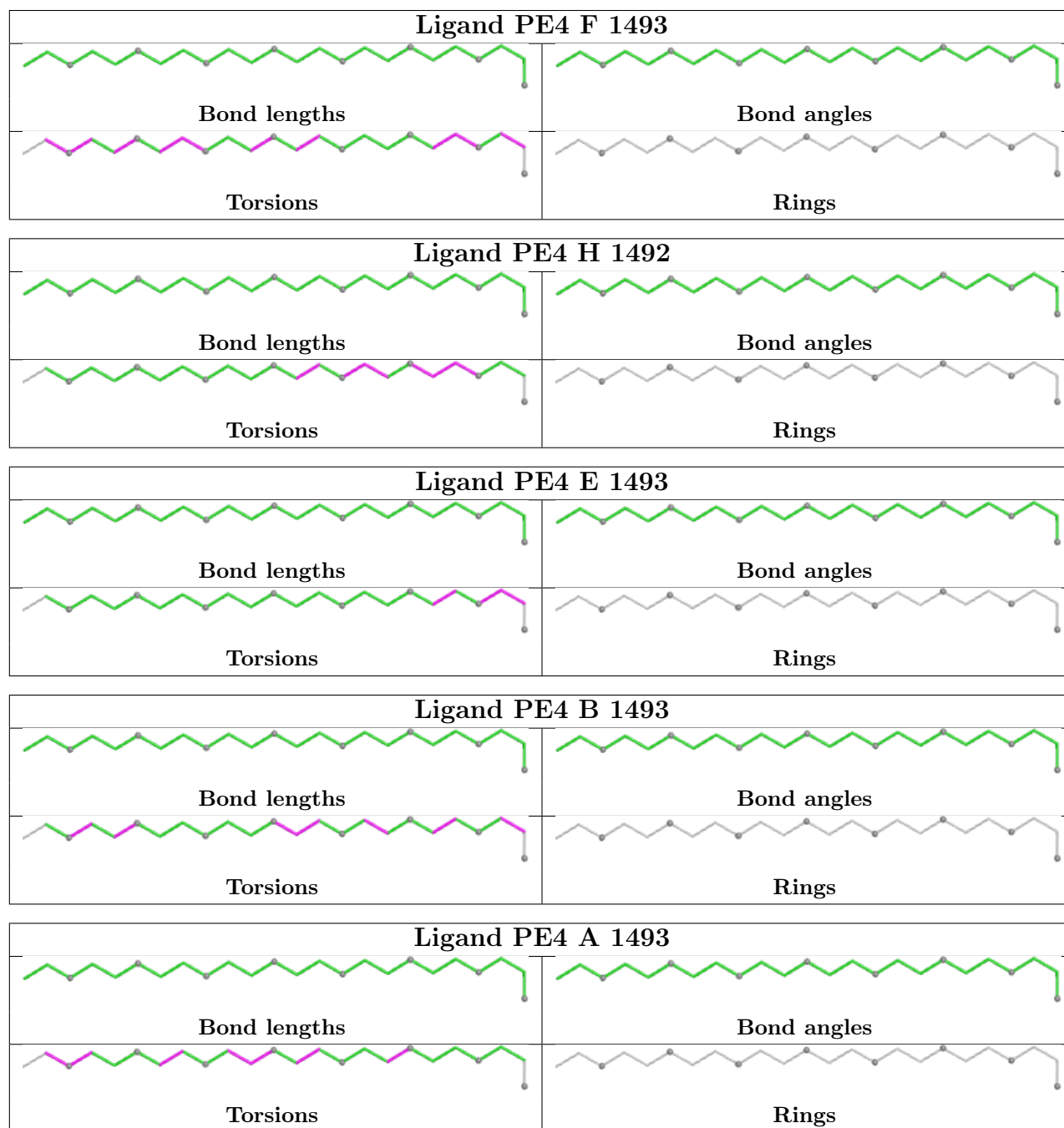
There are no ring outliers.

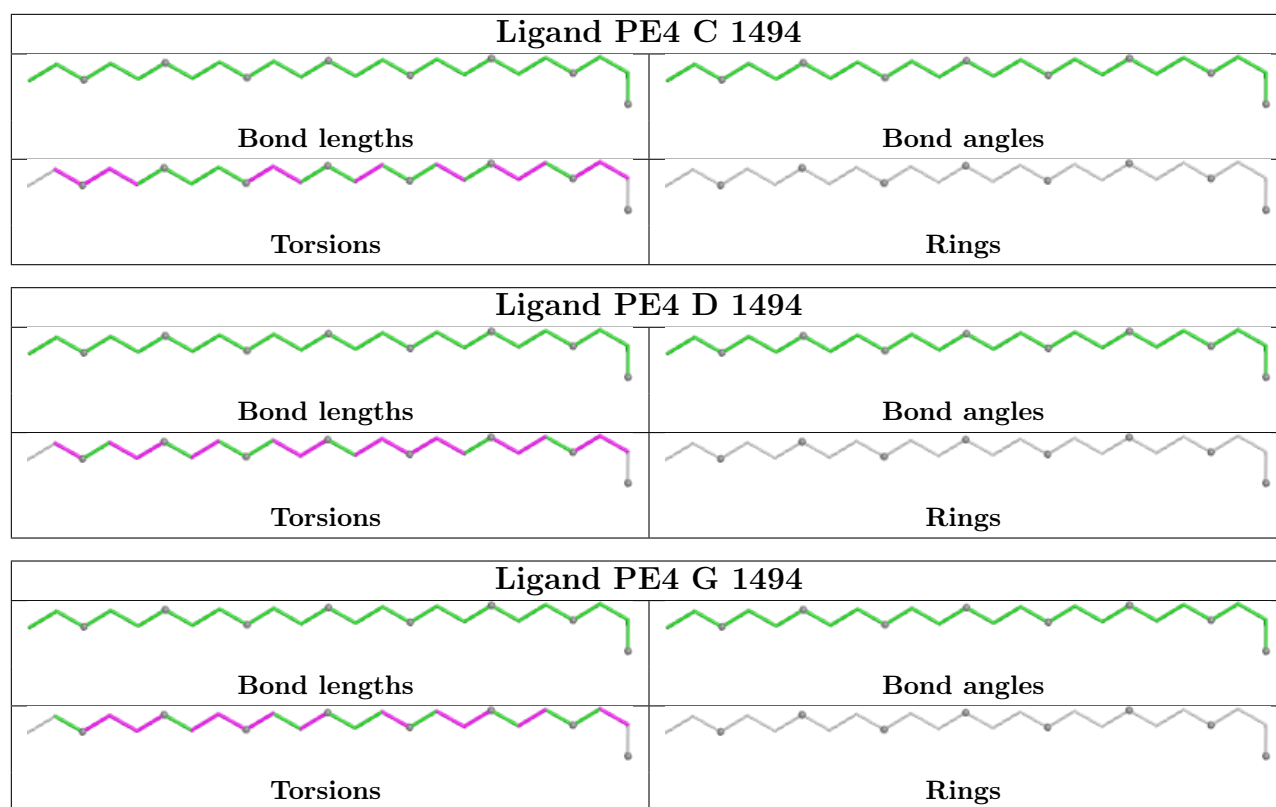
22 monomers are involved in 32 short contacts:

Mol	Chain	Res	Type	Clashes	Symm-Clashes
5	A	1495	GOL	1	0
4	F	1493	PE4	1	0
5	G	1495	GOL	2	0
5	A	1494	GOL	1	0
3	G	1493	EDO	1	0
5	B	1497	GOL	1	0
4	H	1492	PE4	1	0
2	C	1491	DTT	1	0
5	C	1497	GOL	1	0
5	B	1498	GOL	1	0
4	B	1493	PE4	1	0
5	G	1496	GOL	2	0
5	A	1496	GOL	2	0
4	A	1493	PE4	3	0
2	F	1491	DTT	1	0
3	C	1493	EDO	2	0
4	C	1494	PE4	4	0
4	D	1494	PE4	2	0
2	B	1491	DTT	1	0
2	D	1491	DTT	1	0
4	G	1494	PE4	1	0
5	B	1496	GOL	1	0

The following is a two-dimensional graphical depiction of Mogul quality analysis of bond lengths, bond angles, torsion angles, and ring geometry for all instances of the Ligand of Interest. In addition, ligands with molecular weight > 250 and outliers as shown on the validation Tables will

also be included. For torsion angles, if less than 5% of the Mogul distribution of torsion angles is within 10 degrees of the torsion angle in question, then that torsion angle is considered an outlier. Any bond that is central to one or more torsion angles identified as an outlier by Mogul will be highlighted in the graph. For rings, the root-mean-square deviation (RMSD) between the ring in question and similar rings identified by Mogul is calculated over all ring torsion angles. If the average RMSD is greater than 60 degrees and the minimal RMSD between the ring in question and any Mogul-identified rings is also greater than 60 degrees, then that ring is considered an outlier. The outliers are highlighted in purple. The color gray indicates Mogul did not find sufficient equivalents in the CSD to analyse the geometry.





## 5.7 Other polymers [i](#)

There are no such residues in this entry.

## 5.8 Polymer linkage issues [i](#)

There are no chain breaks in this entry.

## 6 Fit of model and data [i](#)

### 6.1 Protein, DNA and RNA chains [i](#)

In the following table, the column labelled ‘#RSRZ> 2’ contains the number (and percentage) of RSRZ outliers, followed by percent RSRZ outliers for the chain as percentile scores relative to all X-ray entries and entries of similar resolution. The OWAB column contains the minimum, median, 95<sup>th</sup> percentile and maximum values of the occupancy-weighted average B-factor per residue. The column labelled ‘Q< 0.9’ lists the number of (and percentage) of residues with an average occupancy less than 0.9.

Mol	Chain	Analysed	<RSRZ>	#RSRZ>2	OWAB(Å <sup>2</sup> )	Q<0.9
1	A	489/489 (100%)	-0.74	0 100 100	6, 15, 28, 48	12 (2%)
1	B	489/489 (100%)	-0.64	1 (0%) 91 91	6, 17, 33, 51	19 (3%)
1	C	489/489 (100%)	-0.52	1 (0%) 91 91	8, 20, 39, 60	9 (1%)
1	D	489/489 (100%)	-0.55	0 100 100	10, 20, 37, 60	3 (0%)
1	E	489/489 (100%)	-0.58	0 100 100	7, 19, 35, 55	9 (1%)
1	F	489/489 (100%)	-0.47	0 100 100	10, 21, 39, 66	6 (1%)
1	G	489/489 (100%)	-0.58	0 100 100	8, 18, 33, 52	9 (1%)
1	H	489/489 (100%)	-0.11	1 (0%) 91 91	9, 28, 48, 70	7 (1%)
All	All	3912/3912 (100%)	-0.52	3 (0%) 92 91	6, 19, 39, 70	74 (1%)

All (3) RSRZ outliers are listed below:

Mol	Chain	Res	Type	RSRZ
1	B	209	GLY	2.3
1	H	209	GLY	2.2
1	C	210	ARG	2.1

### 6.2 Non-standard residues in protein, DNA, RNA chains [i](#)

There are no non-standard protein/DNA/RNA residues in this entry.

### 6.3 Carbohydrates [i](#)

There are no oligosaccharides in this entry.

## 6.4 Ligands

In the following table, the Atoms column lists the number of modelled atoms in the group and the number defined in the chemical component dictionary. The B-factors column lists the minimum, median, 95<sup>th</sup> percentile and maximum values of B factors of atoms in the group. The column labelled 'Q< 0.9' lists the number of atoms with occupancy less than 0.9.

Mol	Type	Chain	Res	Atoms	RSCC	RSR	B-factors(Å <sup>2</sup> )	Q<0.9
4	PE4	F	1493	24/24	0.73	0.19	55,65,69,70	0
4	PE4	B	1493	24/24	0.75	0.17	45,54,61,62	0
4	PE4	G	1494	24/24	0.75	0.19	53,57,60,60	0
3	EDO	A	1492	4/4	0.78	0.18	55,55,57,57	0
4	PE4	D	1494	24/24	0.78	0.18	44,56,59,60	0
2	DTT	D	1491	8/8	0.80	0.17	28,40,53,68	8
2	DTT	B	1491	8/8	0.80	0.17	21,23,44,67	8
5	GOL	C	1498	6/6	0.80	0.15	49,52,53,55	0
4	PE4	E	1493	24/24	0.81	0.17	44,56,60,64	0
4	PE4	H	1492	24/24	0.81	0.15	57,65,69,70	0
2	DTT	F	1491	8/8	0.81	0.16	30,38,55,85	8
5	GOL	D	1496	6/6	0.81	0.17	48,51,52,54	0
5	GOL	G	1495	6/6	0.81	0.17	49,52,54,58	0
5	GOL	A	1495	6/6	0.82	0.19	52,54,55,56	0
5	GOL	B	1495	6/6	0.82	0.15	51,51,52,54	0
2	DTT	H	1491	8/8	0.82	0.15	31,38,55,73	8
2	DTT	E	1491	8/8	0.82	0.15	22,32,63,75	8
3	EDO	G	1493	4/4	0.82	0.27	41,49,54,60	0
3	EDO	D	1492	4/4	0.83	0.20	26,43,44,50	0
5	GOL	C	1496	6/6	0.83	0.15	38,51,52,54	0
4	PE4	C	1494	24/24	0.83	0.16	48,57,64,65	0
5	GOL	D	1495	6/6	0.83	0.15	43,47,52,53	0
2	DTT	C	1491	8/8	0.83	0.18	25,33,46,61	8
4	PE4	A	1493	24/24	0.83	0.15	38,45,53,56	0
2	DTT	G	1491	8/8	0.85	0.15	24,28,44,80	7
3	EDO	F	1492	4/4	0.85	0.14	40,43,44,51	0
2	DTT	A	1491	8/8	0.86	0.15	15,23,39,66	8
5	GOL	F	1495	6/6	0.86	0.13	42,45,48,49	0
3	EDO	C	1493	4/4	0.86	0.12	31,34,37,39	0
3	EDO	G	1492	4/4	0.87	0.14	30,39,42,44	0
5	GOL	G	1497	6/6	0.87	0.12	36,38,45,47	0
5	GOL	E	1495	6/6	0.88	0.12	27,36,39,44	0
5	GOL	C	1497	6/6	0.88	0.12	42,49,51,56	0
3	EDO	D	1493	4/4	0.88	0.22	34,44,46,53	0
5	GOL	E	1494	6/6	0.88	0.12	47,50,52,52	0
5	GOL	B	1496	6/6	0.89	0.13	30,51,52,52	0
5	GOL	A	1494	6/6	0.89	0.11	36,38,42,43	0

*Continued on next page...*

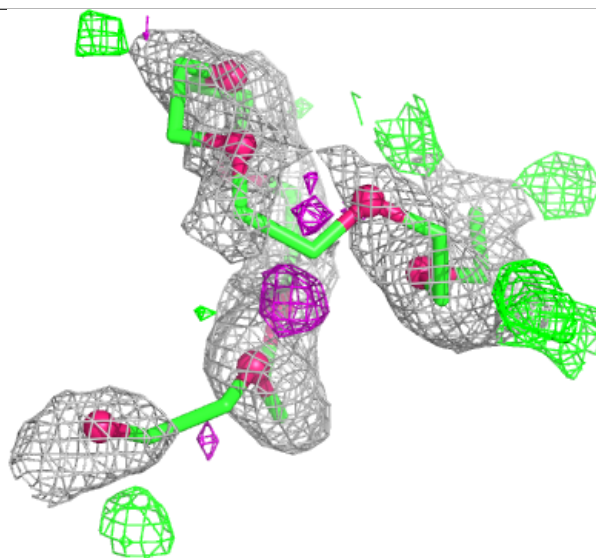
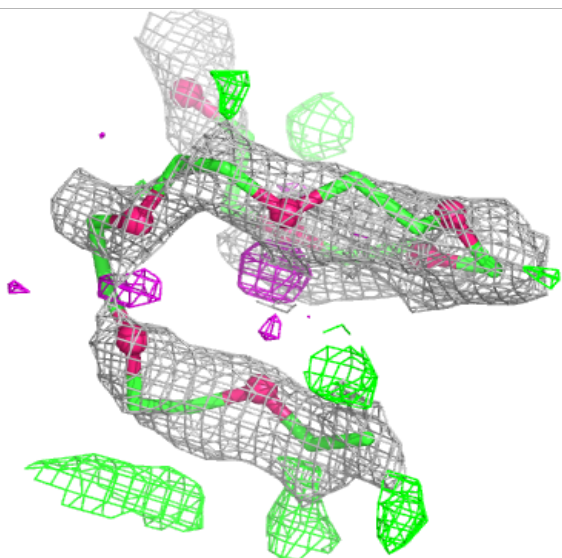
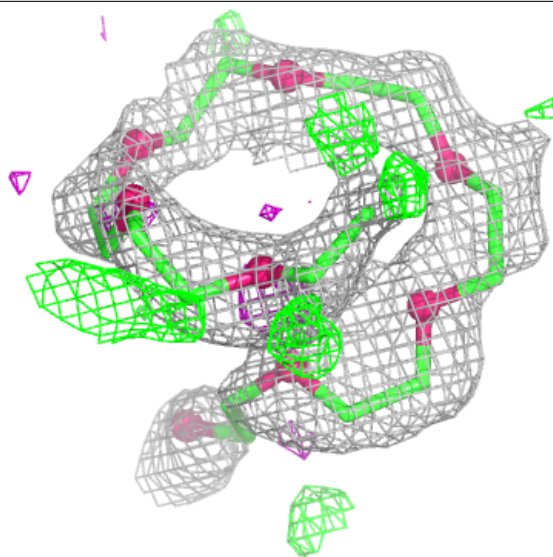
*Continued from previous page...*

Mol	Type	Chain	Res	Atoms	RSCC	RSR	B-factors( $\text{\AA}^2$ )	Q<0.9
5	GOL	F	1494	6/6	0.89	0.11	40,42,47,48	0
5	GOL	C	1495	6/6	0.90	0.11	39,45,46,48	0
3	EDO	E	1492	4/4	0.90	0.12	34,37,43,49	0
5	GOL	B	1498	6/6	0.90	0.11	33,36,38,40	0
5	GOL	H	1493	6/6	0.90	0.12	35,43,45,56	0
5	GOL	G	1496	6/6	0.91	0.09	27,36,42,48	0
3	EDO	B	1492	4/4	0.91	0.12	46,47,48,51	0
5	GOL	A	1496	6/6	0.91	0.12	24,32,40,51	0
5	GOL	B	1497	6/6	0.92	0.11	24,46,54,57	0
5	GOL	B	1494	6/6	0.92	0.09	34,37,38,41	0
3	EDO	C	1492	4/4	0.94	0.09	26,36,37,38	0
6	K	C	1501	1/1	0.96	0.12	38,38,38,38	0
6	K	D	1499	1/1	0.96	0.11	37,37,37,37	0
6	K	E	1498	1/1	0.96	0.11	45,45,45,45	0
6	K	B	1501	1/1	0.97	0.20	42,42,42,42	0
6	K	A	1499	1/1	0.97	0.12	32,32,32,32	0
6	K	F	1498	1/1	0.97	0.21	58,58,58,58	0
6	K	G	1500	1/1	0.97	0.12	39,39,39,39	0
6	K	H	1496	1/1	0.97	0.12	51,51,51,51	0
6	K	C	1499	1/1	0.99	0.04	26,26,26,26	0
6	K	F	1496	1/1	0.99	0.05	24,24,24,24	0
6	K	B	1499	1/1	0.99	0.04	19,19,19,19	0
6	K	G	1499	1/1	0.99	0.03	21,21,21,21	0
6	K	A	1497	1/1	0.99	0.04	19,19,19,19	0
6	K	H	1495	1/1	0.99	0.07	34,34,34,34	0
6	K	E	1496	1/1	0.99	0.04	21,21,21,21	0
6	K	D	1497	1/1	1.00	0.02	23,23,23,23	0
6	K	F	1497	1/1	1.00	0.04	19,19,19,19	0
6	K	D	1498	1/1	1.00	0.02	20,20,20,20	0
6	K	G	1498	1/1	1.00	0.02	19,19,19,19	0
6	K	B	1500	1/1	1.00	0.02	18,18,18,18	0
6	K	C	1500	1/1	1.00	0.02	19,19,19,19	0
6	K	H	1494	1/1	1.00	0.04	24,24,24,24	0
6	K	E	1497	1/1	1.00	0.07	18,18,18,18	0
6	K	A	1498	1/1	1.00	0.02	18,18,18,18	0

The following is a graphical depiction of the model fit to experimental electron density of all instances of the Ligand of Interest. In addition, ligands with molecular weight > 250 and outliers as shown on the geometry validation Tables will also be included. Each fit is shown from different orientation to approximate a three-dimensional view.

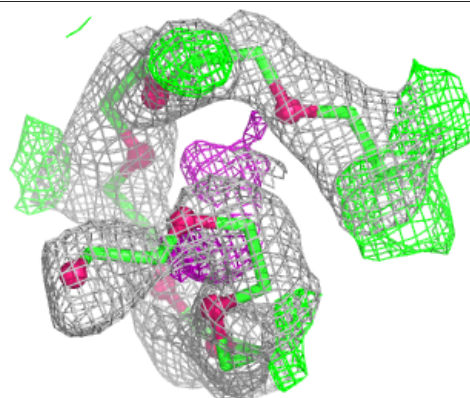
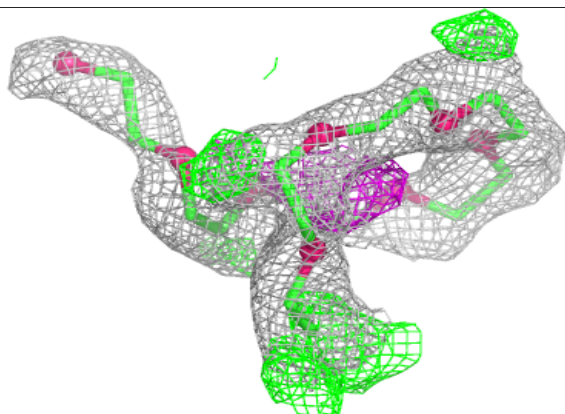
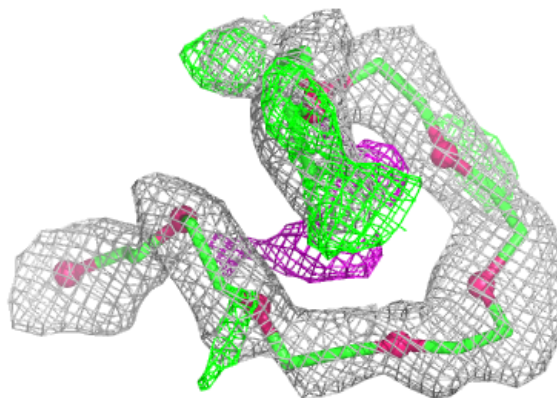
**Electron density around PE4 F 1493:**

$2mF_o-DF_c$  (at 0.7 rmsd) in gray  
 $mF_o-DF_c$  (at 3 rmsd) in purple (negative)  
and green (positive)



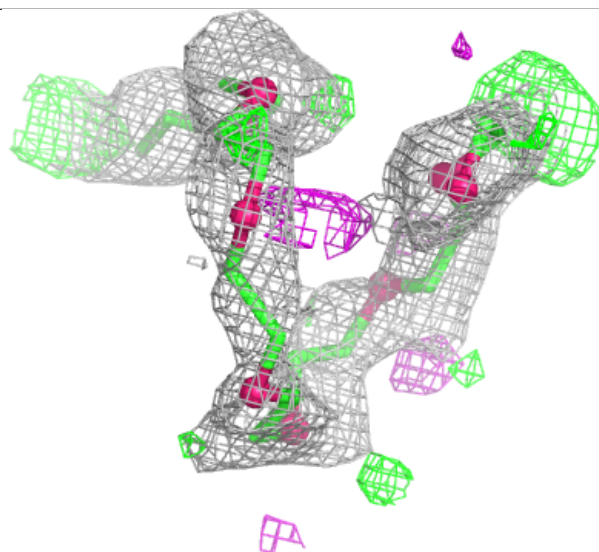
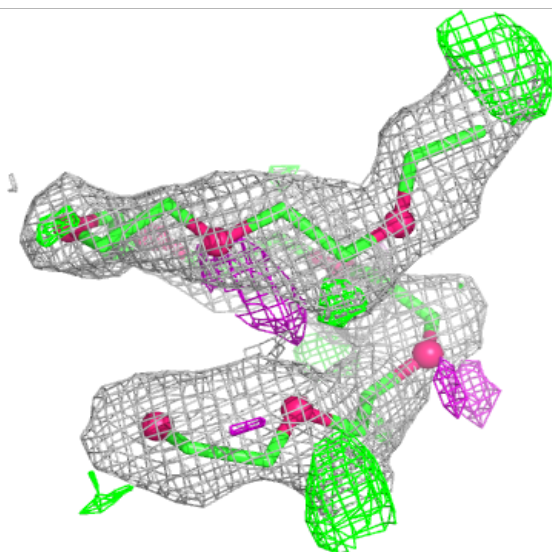
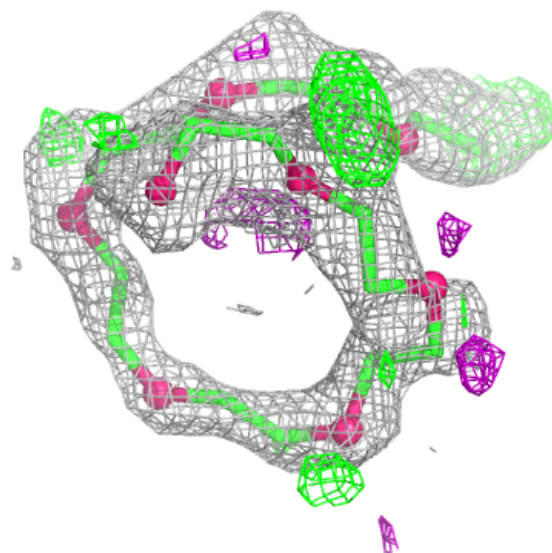
**Electron density around PE4 B 1493:**

$2mF_o-DF_c$  (at 0.7 rmsd) in gray  
 $mF_o-DF_c$  (at 3 rmsd) in purple (negative)  
and green (positive)



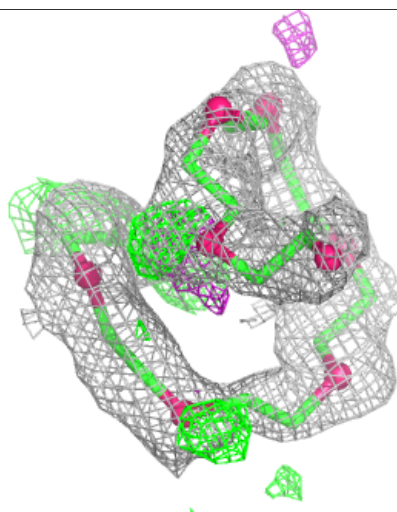
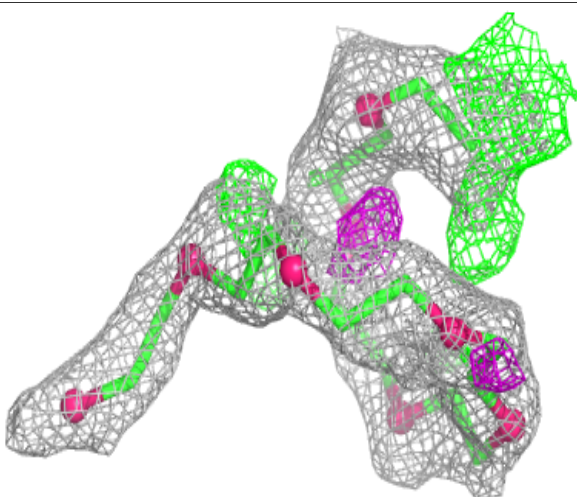
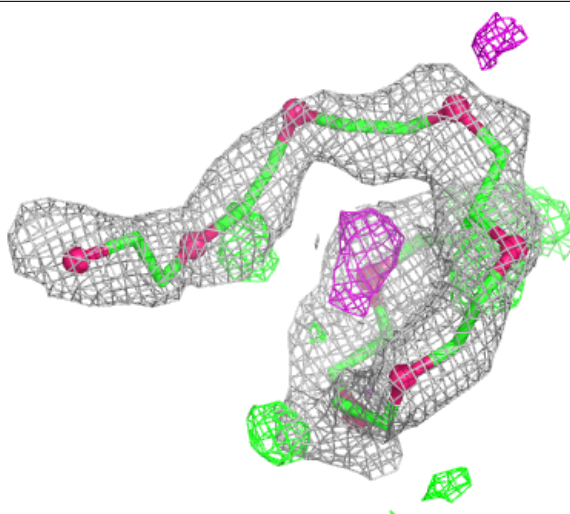
**Electron density around PE4 G 1494:**

$2mF_o-DF_c$  (at 0.7 rmsd) in gray  
 $mF_o-DF_c$  (at 3 rmsd) in purple (negative)  
and green (positive)



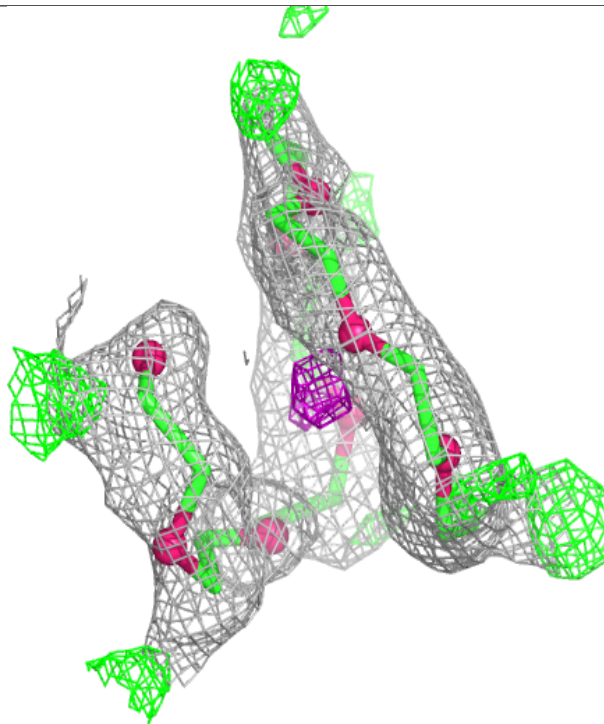
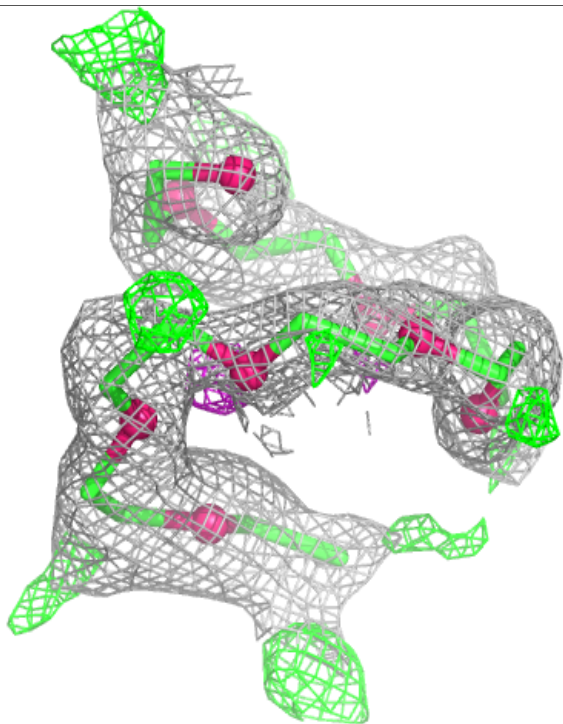
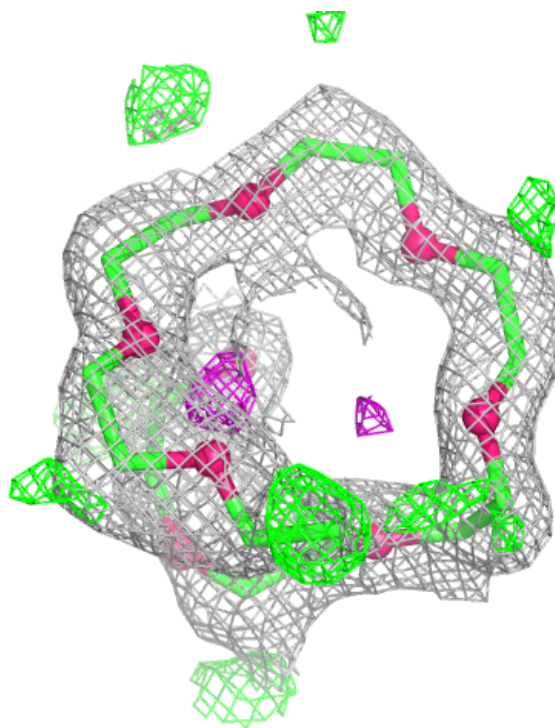
**Electron density around PE4 D 1494:**

$2mF_o-DF_c$  (at 0.7 rmsd) in gray  
 $mF_o-DF_c$  (at 3 rmsd) in purple (negative)  
and green (positive)



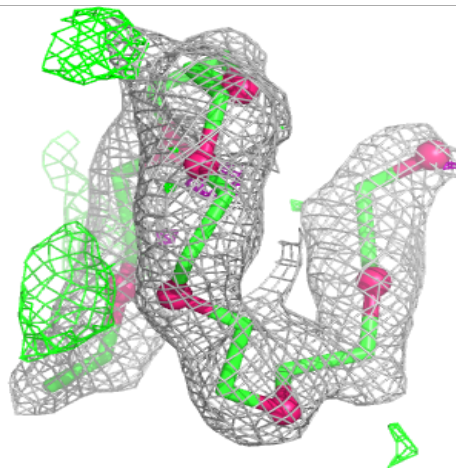
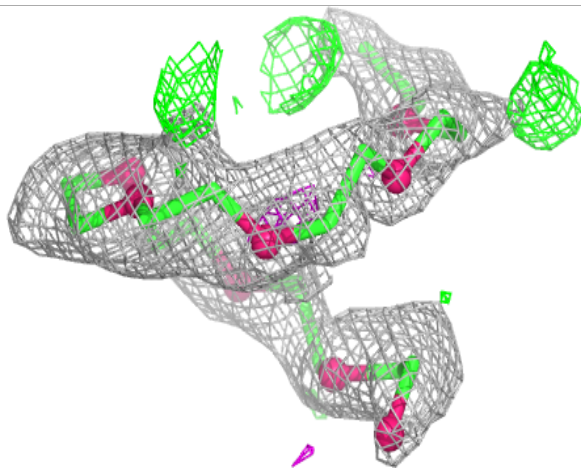
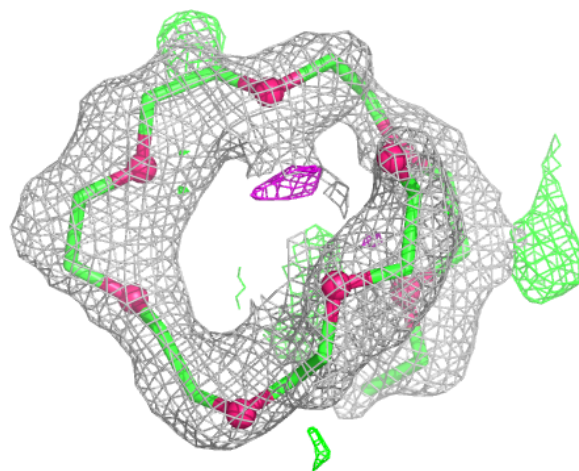
**Electron density around PE4 E 1493:**

$2mF_o-DF_c$  (at 0.7 rmsd) in gray  
 $mF_o-DF_c$  (at 3 rmsd) in purple (negative)  
and green (positive)



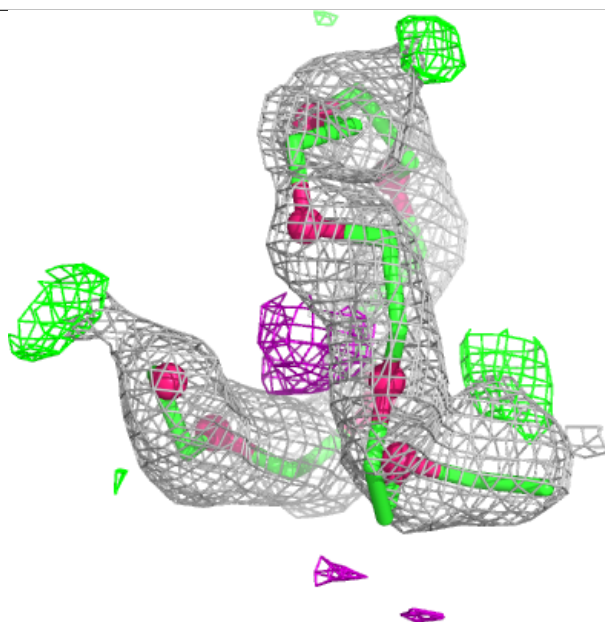
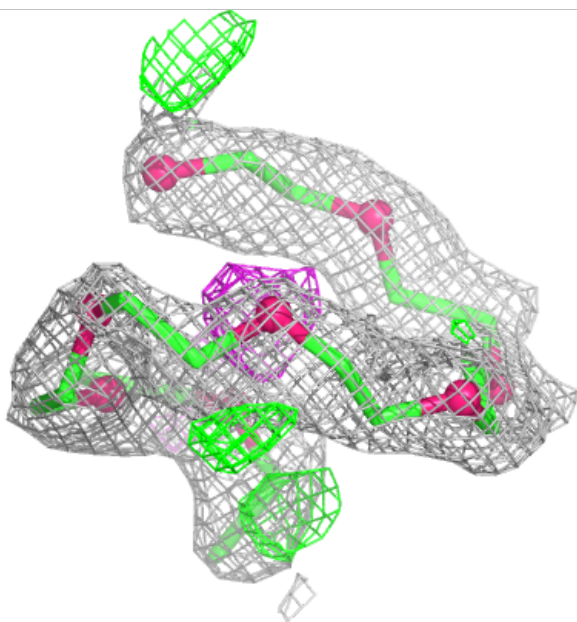
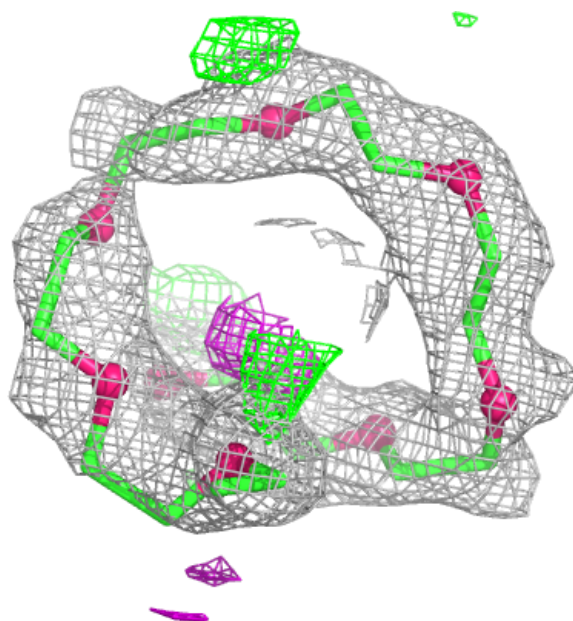
**Electron density around PE4 H 1492:**

$2mF_o-DF_c$  (at 0.7 rmsd) in gray  
 $mF_o-DF_c$  (at 3 rmsd) in purple (negative)  
and green (positive)



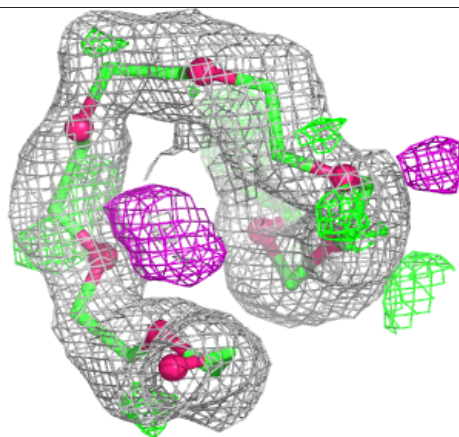
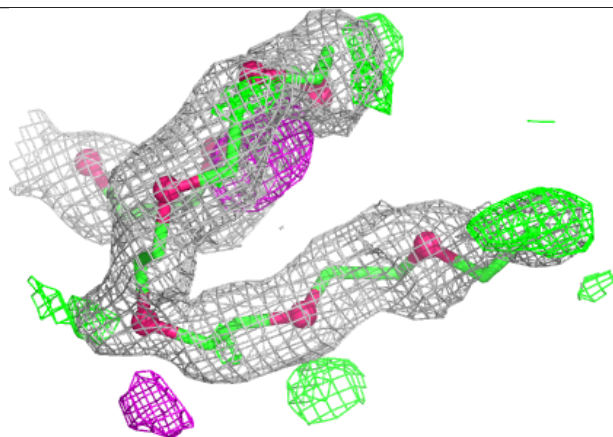
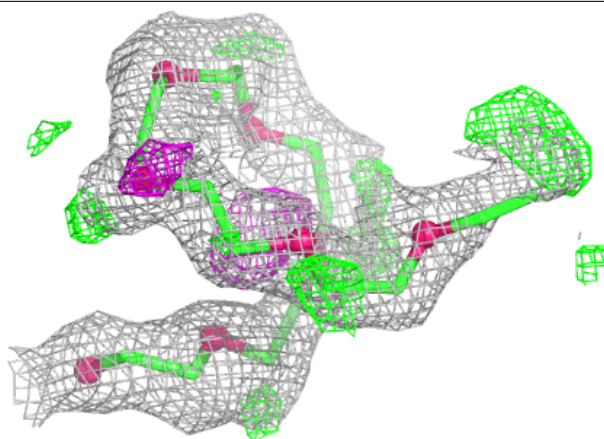
**Electron density around PE4 C 1494:**

$2mF_o-DF_c$  (at 0.7 rmsd) in gray  
 $mF_o-DF_c$  (at 3 rmsd) in purple (negative)  
and green (positive)



**Electron density around PE4 A 1493:**

$2mF_o-DF_c$  (at 0.7 rmsd) in gray  
 $mF_o-DF_c$  (at 3 rmsd) in purple (negative)  
and green (positive)



## 6.5 Other polymers [i](#)

There are no such residues in this entry.