



Full wwPDB X-ray Structure Validation Report ⓘ

Mar 20, 2026 – 04:52 PM UTC

PDB ID : 6C19 / pdb_00006c19
Title : FGFR1 kinase complex with inhibitor SN36985
Authors : Yosaatmadja, Y.; Smaill, J.B.; Squire, C.J.
Deposited on : 2018-01-04
Resolution : 2.12 Å(reported)

This is a Full wwPDB X-ray Structure Validation Report for a publicly released PDB entry.

We welcome your comments at validation@mail.wwpdb.org

A user guide is available at

<https://www.wwpdb.org/validation/2017/XrayValidationReportHelp>

with specific help available everywhere you see the ⓘ symbol.

The types of validation reports are described at

<http://www.wwpdb.org/validation/2017/FAQs#types>.

The following versions of software and data (see [references ⓘ](#)) were used in the production of this report:

MolProbity : 4-5-2 with Phenix2.0
Mogul : 2022.3.0, CSD as543be (2022)
Xtriage (Phenix) : 2.0
EDS : 3.0
Buster-report : wwPDB partial adaption of 1.1.7 (2018)
Percentile statistics : 20250101.v01 (using entries in the PDB archive January 1st 2025)
CCP4 : 9.0.010 (Gargrove)
Density-Fitness : 1.0.12
Ideal geometry (proteins) : Engh & Huber (2001)
Ideal geometry (DNA, RNA) : Parkinson et al. (1996)
Validation Pipeline (wwPDB-VP) : 2.49

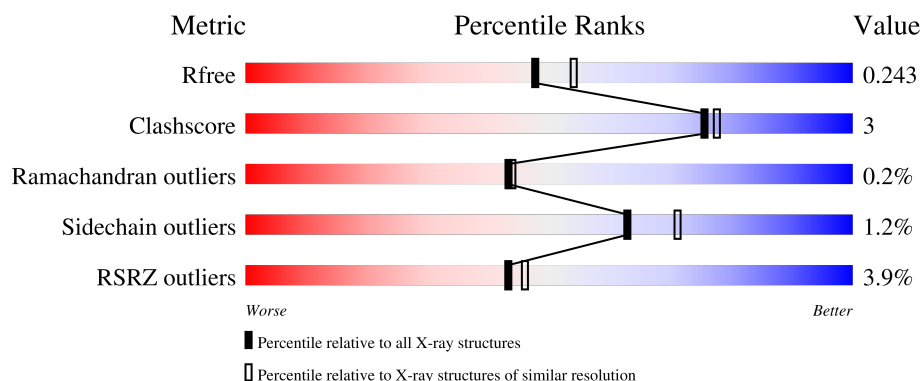
1 Overall quality at a glance

The following experimental techniques were used to determine the structure:

X-RAY DIFFRACTION

The reported resolution of this entry is 2.12 Å.

Percentile scores (ranging between 0-100) for global validation metrics of the entry are shown in the following graphic. The table shows the number of entries on which the scores are based.



Metric	Whole archive (#Entries)	Similar resolution (#Entries, resolution range(Å))
R_{free}	180053	8290 (2.14-2.10)
Clashscore	190562	8817 (2.14-2.10)
Ramachandran outliers	187476	8738 (2.14-2.10)
Sidechain outliers	187428	8739 (2.14-2.10)
RSRZ outliers	180081	8294 (2.14-2.10)

The table below summarises the geometric issues observed across the polymeric chains and their fit to the electron density. The red, orange, yellow and green segments of the lower bar indicate the fraction of residues that contain outliers for ≥ 3 , 2, 1 and 0 types of geometric quality criteria respectively. A grey segment represents the fraction of residues that are not modelled. The numeric value for each fraction is indicated below the corresponding segment, with a dot representing fractions $\leq 5\%$. The upper red bar (where present) indicates the fraction of residues that have poor fit to the electron density. The numeric value is given above the bar.

Mol	Chain	Length	Quality of chain
1	A	311	<div> <div>2%</div> <div>81%</div> <div>7%</div> <div>11%</div> </div>
1	B	311	<div> <div>5%</div> <div>80%</div> <div>5%</div> <div>15%</div> </div>

2 Entry composition

There are 4 unique types of molecules in this entry. The entry contains 4318 atoms, of which 0 are hydrogens and 0 are deuteriums.

In the tables below, the ZeroOcc column contains the number of atoms modelled with zero occupancy, the AltConf column contains the number of residues with at least one atom in alternate conformation and the Trace column contains the number of residues modelled with at most 2 atoms.

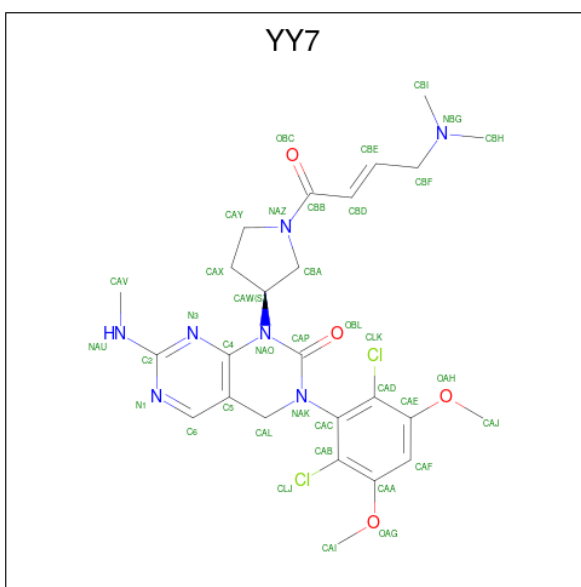
- Molecule 1 is a protein called Fibroblast growth factor receptor 1.

Mol	Chain	Residues	Atoms					ZeroOcc	AltConf	Trace
1	A	276	Total	C	N	O	S	0	2	0
			2132	1355	361	397	19			
1	B	264	Total	C	N	O	S	0	1	0
			2020	1281	345	376	18			

There are 12 discrepancies between the modelled and reference sequences:

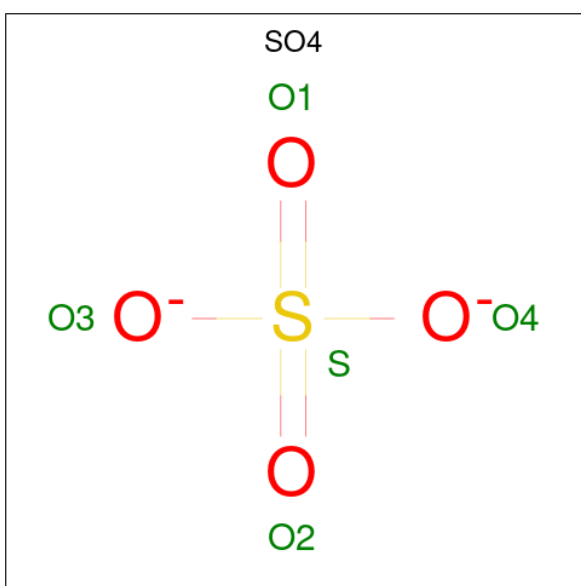
Chain	Residue	Modelled	Actual	Comment	Reference
A	455	GLY	-	expression tag	UNP P11362
A	456	ALA	-	expression tag	UNP P11362
A	457	MET	-	expression tag	UNP P11362
A	458	SER	-	expression tag	UNP P11362
A	488	ALA	CYS	conflict	UNP P11362
A	584	SER	CYS	conflict	UNP P11362
B	455	GLY	-	expression tag	UNP P11362
B	456	ALA	-	expression tag	UNP P11362
B	457	MET	-	expression tag	UNP P11362
B	458	SER	-	expression tag	UNP P11362
B	488	ALA	CYS	conflict	UNP P11362
B	584	SER	CYS	conflict	UNP P11362

- Molecule 2 is 3-(2,6-dichloro-3,5-dimethoxyphenyl)-1-[(3S)-1-[(2E)-4-(dimethylamino)but-2-enoyl]pyrrolidin-3-yl]-7-(methylamino)-3,4-dihydropyrimido[4,5-d]pyrimidin-2(1H)-one (CCD ID: YY7) (formula: C₂₅H₃₁Cl₂N₇O₄) (labeled as "Ligand of Interest" by depositor).



Mol	Chain	Residues	Atoms					ZeroOcc	AltConf
2	A	1	Total 38	C 25	Cl 2	N 7	O 4	0	0
2	B	1	Total 35	C 23	Cl 2	N 6	O 4	0	0

- Molecule 3 is SULFATE ION (CCD ID: SO4) (formula: O_4S).



Mol	Chain	Residues	Atoms			ZeroOcc	AltConf
3	A	1	Total	O	S	0	0
			5	4	1		

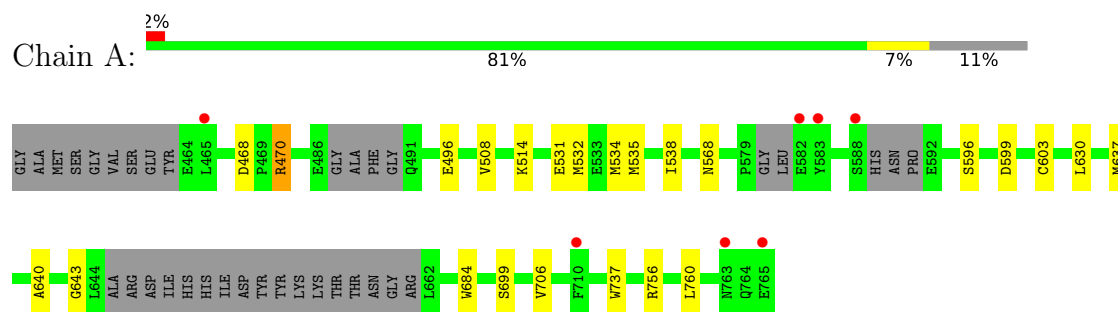
- Molecule 4 is water.

Mol	Chain	Residues	Atoms		ZeroOcc	AltConf
4	A	61	Total 61	O 61	0	0
4	B	27	Total 27	O 27	0	0

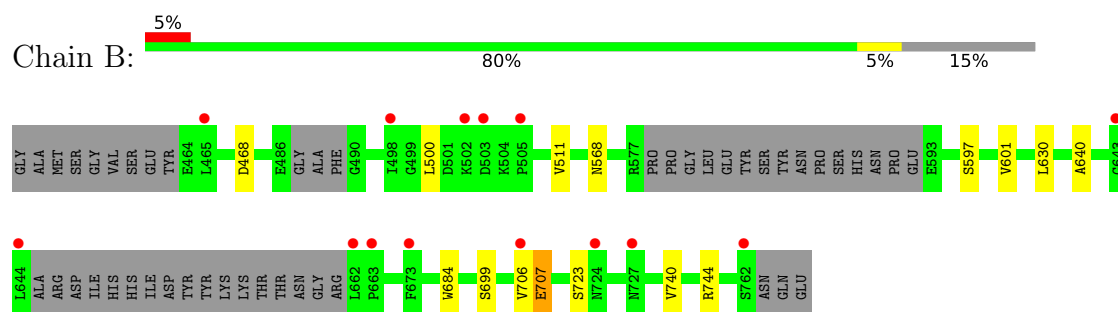
3 Residue-property plots [i](#)

These plots are drawn for all protein, RNA, DNA and oligosaccharide chains in the entry. The first graphic for a chain summarises the proportions of the various outlier classes displayed in the second graphic. The second graphic shows the sequence view annotated by issues in geometry and electron density. Residues are color-coded according to the number of geometric quality criteria for which they contain at least one outlier: green = 0, yellow = 1, orange = 2 and red = 3 or more. A red dot above a residue indicates a poor fit to the electron density ($RSRZ > 2$). Stretches of 2 or more consecutive residues without any outlier are shown as a green connector. Residues present in the sample, but not in the model, are shown in grey.

• Molecule 1: Fibroblast growth factor receptor 1



• Molecule 1: Fibroblast growth factor receptor 1



4 Data and refinement statistics

Property	Value	Source
Space group	C 1 2 1	Depositor
Cell constants a, b, c, α , β , γ	208.43Å 49.01Å 64.63Å 90.00° 105.97° 90.00°	Depositor
Resolution (Å)	19.71 – 2.12 19.71 – 2.12	Depositor EDS
% Data completeness (in resolution range)	99.8 (19.71-2.12) 99.8 (19.71-2.12)	Depositor EDS
R_{merge}	0.08	Depositor
R_{sym}	(Not available)	Depositor
$\langle I/\sigma(I) \rangle$ ¹	3.07 (at 2.13Å)	Xtriage
Refinement program	REFMAC 5.8.0049	Depositor
R, R_{free}	0.205 , 0.239 0.213 , 0.243	Depositor DCC
R_{free} test set	1742 reflections (4.83%)	wwPDB-VP
Wilson B-factor (Å ²)	29.5	Xtriage
Anisotropy	0.136	Xtriage
Bulk solvent k_{sol} (e/Å ³), B_{sol} (Å ²)	0.33 , 32.7	EDS
L-test for twinning ²	$\langle L \rangle = 0.49$, $\langle L^2 \rangle = 0.32$	Xtriage
Estimated twinning fraction	0.018 for -h-2*k,l	Xtriage
F_o, F_c correlation	0.94	EDS
Total number of atoms	4318	wwPDB-VP
Average B, all atoms (Å ²)	35.0	wwPDB-VP

Xtriage's analysis on translational NCS is as follows: *The largest off-origin peak in the Patterson function is 7.26% of the height of the origin peak. No significant pseudotranslation is detected.*

¹Intensities estimated from amplitudes.

²Theoretical values of $\langle |L| \rangle$, $\langle L^2 \rangle$ for acentric reflections are 0.5, 0.333 respectively for untwinned datasets, and 0.375, 0.2 for perfectly twinned datasets.

5 Model quality

5.1 Standard geometry

Bond lengths and bond angles in the following residue types are not validated in this section: SO4, YY7

The Z score for a bond length (or angle) is the number of standard deviations the observed value is removed from the expected value. A bond length (or angle) with $|Z| > 5$ is considered an outlier worth inspection. RMSZ is the root-mean-square of all Z scores of the bond lengths (or angles).

Mol	Chain	Bond lengths		Bond angles	
		RMSZ	$\# Z > 5$	RMSZ	$\# Z > 5$
1	A	0.81	0/2174	0.88	0/2949
1	B	0.78	0/2057	0.92	7/2792 (0.3%)
All	All	0.80	0/4231	0.90	7/5741 (0.1%)

There are no bond length outliers.

All (7) bond angle outliers are listed below:

Mol	Chain	Res	Type	Atoms	Z	Observed(°)	Ideal(°)
1	B	744	ARG	CA-C-N	-6.75	113.35	120.03
1	B	744	ARG	C-N-CA	-6.75	113.35	120.03
1	B	740	VAL	N-CA-C	5.37	112.44	107.56
1	B	468	ASP	CA-C-N	5.09	125.38	119.47
1	B	468	ASP	C-N-CA	5.09	125.38	119.47
1	B	723	SER	CA-C-N	-5.07	115.42	123.12
1	B	723	SER	C-N-CA	-5.07	115.42	123.12

There are no chirality outliers.

There are no planarity outliers.

5.2 Too-close contacts

In the following table, the Non-H and H(model) columns list the number of non-hydrogen atoms and hydrogen atoms in the chain respectively. The H(added) column lists the number of hydrogen atoms added and optimized by MolProbity. The Clashes column lists the number of clashes within the asymmetric unit, whereas Symm-Clashes lists symmetry-related clashes.

Mol	Chain	Non-H	H(model)	H(added)	Clashes	Symm-Clashes
1	A	2132	0	2056	19	0
1	B	2020	0	1961	6	0

Continued on next page...

Continued from previous page...

Mol	Chain	Non-H	H(model)	H(added)	Clashes	Symm-Clashes
2	A	38	0	0	2	0
2	B	35	0	0	1	0
3	A	5	0	0	0	0
4	A	61	0	0	1	0
4	B	27	0	0	0	0
All	All	4318	0	4017	25	0

The all-atom clashscore is defined as the number of clashes found per 1000 atoms (including hydrogen atoms). The all-atom clashscore for this structure is 3.

All (25) close contacts within the same asymmetric unit are listed below, sorted by their clash magnitude.

Atom-1	Atom-2	Interatomic distance (Å)	Clash overlap (Å)
1:A:534[A]:MET:HE2	1:A:538:ILE:HD11	1.70	0.74
1:A:534[A]:MET:HE3	1:A:643:GLY:HA2	1.71	0.71
1:A:756:ARG:O	1:A:760:LEU:HD13	1.93	0.68
1:B:597:SER:O	1:B:601:VAL:HG23	1.93	0.67
1:A:534[A]:MET:CE	1:A:643:GLY:HA2	2.25	0.66
1:B:707:GLU:H	1:B:707:GLU:CD	2.06	0.60
1:A:531:GLU:HG2	1:A:535:MET:HE2	1.84	0.59
1:A:470:ARG:HD2	4:A:931:HOH:O	2.05	0.57
1:B:568:ASN:HA	1:B:630:LEU:HD23	1.89	0.54
1:A:534[A]:MET:CE	1:A:538:ILE:HD11	2.38	0.53
1:A:603[B]:CYS:SG	1:A:637:MET:HE3	2.50	0.52
1:A:640:ALA:HB1	2:A:801:YY7:CLK	2.46	0.52
1:A:534[A]:MET:CE	1:A:538:ILE:CD1	2.91	0.48
1:A:684:TRP:CE3	1:A:737:TRP:HA	2.49	0.48
1:B:640:ALA:HB1	2:B:801:YY7:CLK	2.50	0.47
1:A:468:ASP:OD1	1:A:470:ARG:HD3	2.15	0.47
1:A:468:ASP:OD1	1:A:470:ARG:CD	2.62	0.47
1:A:514:LYS:HB2	2:A:801:YY7:CLJ	2.54	0.45
1:B:500:LEU:CD1	1:B:511:VAL:HG11	2.46	0.45
1:A:568:ASN:HA	1:A:630:LEU:HD23	2.00	0.43
1:A:596:SER:OG	1:A:599:ASP:OD2	2.31	0.42
1:B:684:TRP:C	1:B:684:TRP:CD1	2.97	0.42
1:A:496:GLU:HB3	1:A:508:VAL:CG1	2.50	0.42
1:A:532:MET:HA	1:A:535:MET:HE3	2.03	0.41
1:A:534[A]:MET:C	1:A:534[A]:MET:SD	3.04	0.40

There are no symmetry-related clashes.

5.3 Torsion angles

5.3.1 Protein backbone

In the following table, the Percentiles column shows the percent Ramachandran outliers of the chain as a percentile score with respect to all X-ray entries followed by that with respect to entries of similar resolution.

The Analysed column shows the number of residues for which the backbone conformation was analysed, and the total number of residues.

Mol	Chain	Analysed	Favoured	Allowed	Outliers	Percentiles	
1	A	268/311 (86%)	264 (98%)	4 (2%)	0	100	100
1	B	257/311 (83%)	251 (98%)	5 (2%)	1 (0%)	30	28
All	All	525/622 (84%)	515 (98%)	9 (2%)	1 (0%)	43	44

All (1) Ramachandran outliers are listed below:

Mol	Chain	Res	Type
1	B	706	VAL

5.3.2 Protein sidechains

In the following table, the Percentiles column shows the percent sidechain outliers of the chain as a percentile score with respect to all X-ray entries followed by that with respect to entries of similar resolution.

The Analysed column shows the number of residues for which the sidechain conformation was analysed, and the total number of residues.

Mol	Chain	Analysed	Rotameric	Outliers	Percentiles	
1	A	223/271 (82%)	220 (99%)	3 (1%)	61	69
1	B	211/271 (78%)	209 (99%)	2 (1%)	70	78
All	All	434/542 (80%)	429 (99%)	5 (1%)	63	71

All (5) residues with a non-rotameric sidechain are listed below:

Mol	Chain	Res	Type
1	A	470	ARG
1	A	699	SER
1	A	706	VAL
1	B	699	SER
1	B	707	GLU

Sometimes sidechains can be flipped to improve hydrogen bonding and reduce clashes. All (1) such sidechains are listed below:

Mol	Chain	Res	Type
1	B	679	HIS

5.3.3 RNA [i](#)

There are no RNA molecules in this entry.

5.4 Non-standard residues in protein, DNA, RNA chains [i](#)

There are no non-standard protein/DNA/RNA residues in this entry.

5.5 Carbohydrates [i](#)

There are no oligosaccharides in this entry.

5.6 Ligand geometry [i](#)

3 ligands are modelled in this entry.

In the following table, the Counts columns list the number of bonds (or angles) for which Mogul statistics could be retrieved, the number of bonds (or angles) that are observed in the model and the number of bonds (or angles) that are defined in the Chemical Component Dictionary. The Link column lists molecule types, if any, to which the group is linked. The Z score for a bond length (or angle) is the number of standard deviations the observed value is removed from the expected value. A bond length (or angle) with $|Z| > 2$ is considered an outlier worth inspection. RMSZ is the root-mean-square of all Z scores of the bond lengths (or angles).

Mol	Type	Chain	Res	Link	Bond lengths			Bond angles		
					Counts	RMSZ	$\# Z > 2$	Counts	RMSZ	$\# Z > 2$
2	YY7	B	801	-	38,38,41	2.30	11 (28%)	41,55,59	2.63	20 (48%)
2	YY7	A	801	-	40,41,41	2.44	14 (35%)	45,59,59	2.63	21 (46%)
3	SO4	A	802	-	4,4,4	0.46	0	6,6,6	0.16	0

In the following table, the Chirals column lists the number of chiral outliers, the number of chiral centers analysed, the number of these observed in the model and the number defined in the Chemical Component Dictionary. Similar counts are reported in the Torsion and Rings columns. '-' means no outliers of that kind were identified.

Mol	Type	Chain	Res	Link	Chirals	Torsions	Rings
2	YY7	B	801	-	-	1/21/46/49	0/4/4/4
2	YY7	A	801	-	-	2/24/49/49	0/4/4/4

All (25) bond length outliers are listed below:

Mol	Chain	Res	Type	Atoms	Z	Observed(Å)	Ideal(Å)
2	A	801	YY7	CBD-CBE	7.60	1.53	1.32
2	A	801	YY7	C2-NAU	7.24	1.40	1.34
2	B	801	YY7	C2-NAU	6.22	1.39	1.34
2	B	801	YY7	CBD-CBE	6.18	1.54	1.31
2	A	801	YY7	CAL-C5	-5.65	1.38	1.51
2	B	801	YY7	CAL-C5	-5.27	1.39	1.51
2	B	801	YY7	CBD-CBB	4.45	1.55	1.48
2	A	801	YY7	CBD-CBB	4.09	1.54	1.48
2	A	801	YY7	CAP-NAK	-3.44	1.33	1.37
2	B	801	YY7	CAX-CAY	-3.25	1.46	1.52
2	B	801	YY7	CAP-NAK	-3.07	1.34	1.37
2	B	801	YY7	CAP-NAO	-2.99	1.34	1.37
2	B	801	YY7	C4-NAO	-2.94	1.37	1.39
2	A	801	YY7	CAP-NAO	-2.88	1.35	1.37
2	B	801	YY7	CAW-NAO	2.58	1.53	1.48
2	A	801	YY7	CAD-CLK	-2.57	1.67	1.72
2	A	801	YY7	CAE-CAD	-2.33	1.36	1.40
2	A	801	YY7	C4-NAO	-2.27	1.37	1.39
2	A	801	YY7	C2-N1	2.23	1.37	1.34
2	B	801	YY7	CAE-CAD	-2.23	1.37	1.40
2	A	801	YY7	CAW-NAO	2.16	1.52	1.48
2	A	801	YY7	C6-N1	2.15	1.38	1.34
2	A	801	YY7	CBA-NAZ	2.06	1.50	1.46
2	A	801	YY7	CAX-CAY	-2.06	1.48	1.52
2	B	801	YY7	CAC-CAD	-2.03	1.37	1.40

All (41) bond angle outliers are listed below:

Mol	Chain	Res	Type	Atoms	Z	Observed(°)	Ideal(°)
2	A	801	YY7	C4-NAO-CAP	-6.72	116.01	122.22
2	B	801	YY7	N1-C2-N3	-6.28	120.35	126.42
2	A	801	YY7	N1-C2-N3	-5.89	120.73	126.42
2	B	801	YY7	C4-NAO-CAP	-5.76	116.90	122.22
2	A	801	YY7	CBE-CBF-NBG	-5.08	104.44	112.25
2	B	801	YY7	NAO-CAP-NAK	5.05	122.55	116.23
2	A	801	YY7	C6-C5-C4	4.67	121.21	115.51
2	A	801	YY7	CAV-NAU-C2	-4.51	118.15	123.59

Continued on next page...

Continued from previous page...

Mol	Chain	Res	Type	Atoms	Z	Observed(°)	Ideal(°)
2	B	801	YY7	CAC-CAD-CLK	-4.37	111.57	120.17
2	A	801	YY7	NAO-CAP-NAK	4.36	121.69	116.23
2	B	801	YY7	CAV-NAU-C2	-4.12	118.62	123.59
2	B	801	YY7	CAX-CAY-NAZ	3.99	108.06	102.93
2	B	801	YY7	CAX-CAW-CBA	3.52	108.16	102.22
2	B	801	YY7	C2-N3-C4	3.45	125.06	113.99
2	A	801	YY7	CAC-CAD-CLK	-3.38	113.52	120.17
2	B	801	YY7	CAC-NAK-CAP	3.29	122.84	117.61
2	A	801	YY7	C5-C6-N1	-3.25	118.55	123.83
2	A	801	YY7	CBI-NBG-CBF	3.23	115.55	110.41
2	B	801	YY7	C6-C5-C4	3.19	119.41	115.51
2	A	801	YY7	CBF-CBE-CBD	-3.06	120.08	124.82
2	B	801	YY7	NAU-C2-N3	3.02	119.86	116.96
2	A	801	YY7	CAI-OAG-CAA	-2.92	113.23	117.51
2	B	801	YY7	NAU-C2-N1	2.89	119.79	117.00
2	B	801	YY7	OBL-CAP-NAO	-2.88	118.67	122.82
2	A	801	YY7	NAU-C2-N3	2.82	119.67	116.96
2	A	801	YY7	C2-N3-C4	2.82	123.03	113.99
2	B	801	YY7	CAE-CAD-CLK	2.79	125.41	120.27
2	A	801	YY7	CAC-CAB-CLJ	2.78	125.64	120.17
2	A	801	YY7	NAU-C2-N1	2.69	119.60	117.00
2	A	801	YY7	CBD-CBB-NAZ	-2.65	114.95	118.53
2	A	801	YY7	CAL-NAK-CAP	-2.62	118.17	122.53
2	B	801	YY7	OBL-CAP-NAK	-2.61	118.77	122.15
2	A	801	YY7	OBL-CAP-NAO	-2.54	119.16	122.82
2	A	801	YY7	CAC-NAK-CAP	2.49	121.57	117.61
2	B	801	YY7	CAJ-OAH-CAE	-2.38	114.02	117.51
2	A	801	YY7	OBL-CAP-NAK	-2.32	119.15	122.15
2	B	801	YY7	CAF-CAE-CAD	-2.31	118.21	120.99
2	A	801	YY7	C6-N1-C2	2.22	118.85	115.81
2	B	801	YY7	CAW-NAO-CAP	-2.04	114.21	116.92
2	B	801	YY7	CBF-CBE-CBD	-2.03	121.20	125.28
2	B	801	YY7	OAH-CAE-CAF	2.03	127.57	124.08

There are no chirality outliers.

All (3) torsion outliers are listed below:

Mol	Chain	Res	Type	Atoms
2	A	801	YY7	CBA-CAW-NAO-C4
2	B	801	YY7	CBA-CAW-NAO-C4
2	A	801	YY7	CBE-CBF-NBG-CBI

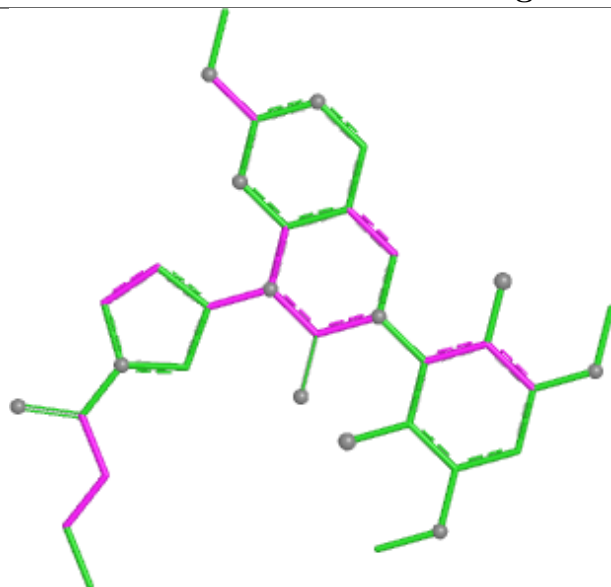
There are no ring outliers.

2 monomers are involved in 3 short contacts:

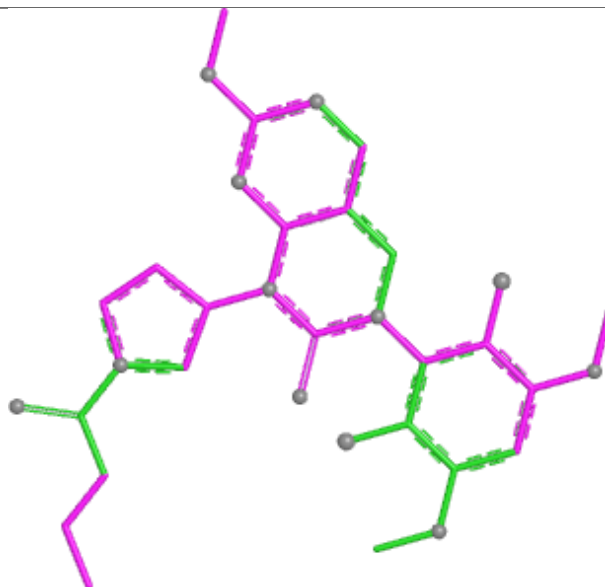
Mol	Chain	Res	Type	Clashes	Symm-Clashes
2	B	801	YY7	1	0
2	A	801	YY7	2	0

The following is a two-dimensional graphical depiction of Mogul quality analysis of bond lengths, bond angles, torsion angles, and ring geometry for all instances of the Ligand of Interest. In addition, ligands with molecular weight > 250 and outliers as shown on the validation Tables will also be included. For torsion angles, if less than 5% of the Mogul distribution of torsion angles is within 10 degrees of the torsion angle in question, then that torsion angle is considered an outlier. Any bond that is central to one or more torsion angles identified as an outlier by Mogul will be highlighted in the graph. For rings, the root-mean-square deviation (RMSD) between the ring in question and similar rings identified by Mogul is calculated over all ring torsion angles. If the average RMSD is greater than 60 degrees and the minimal RMSD between the ring in question and any Mogul-identified rings is also greater than 60 degrees, then that ring is considered an outlier. The outliers are highlighted in purple. The color gray indicates Mogul did not find sufficient equivalents in the CSD to analyse the geometry.

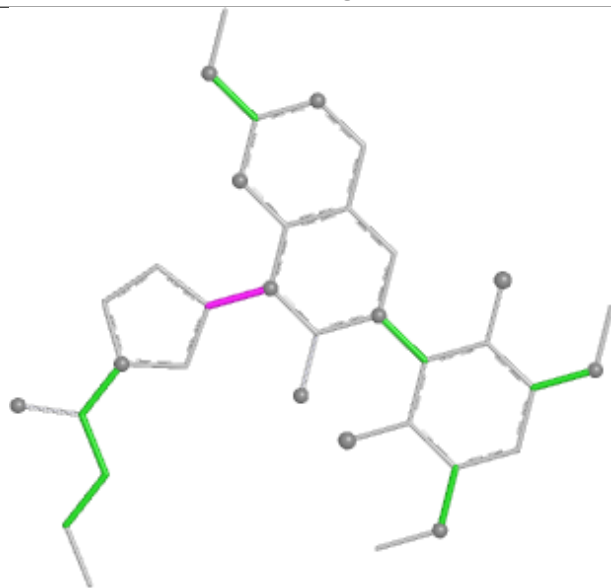
Ligand YY7 B 801



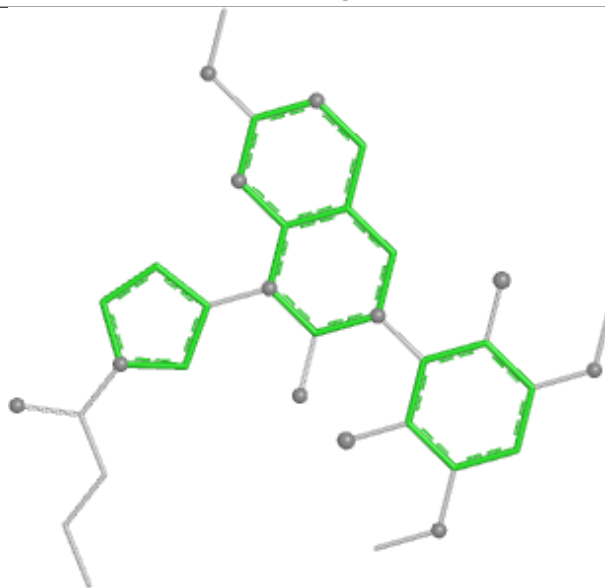
Bond lengths



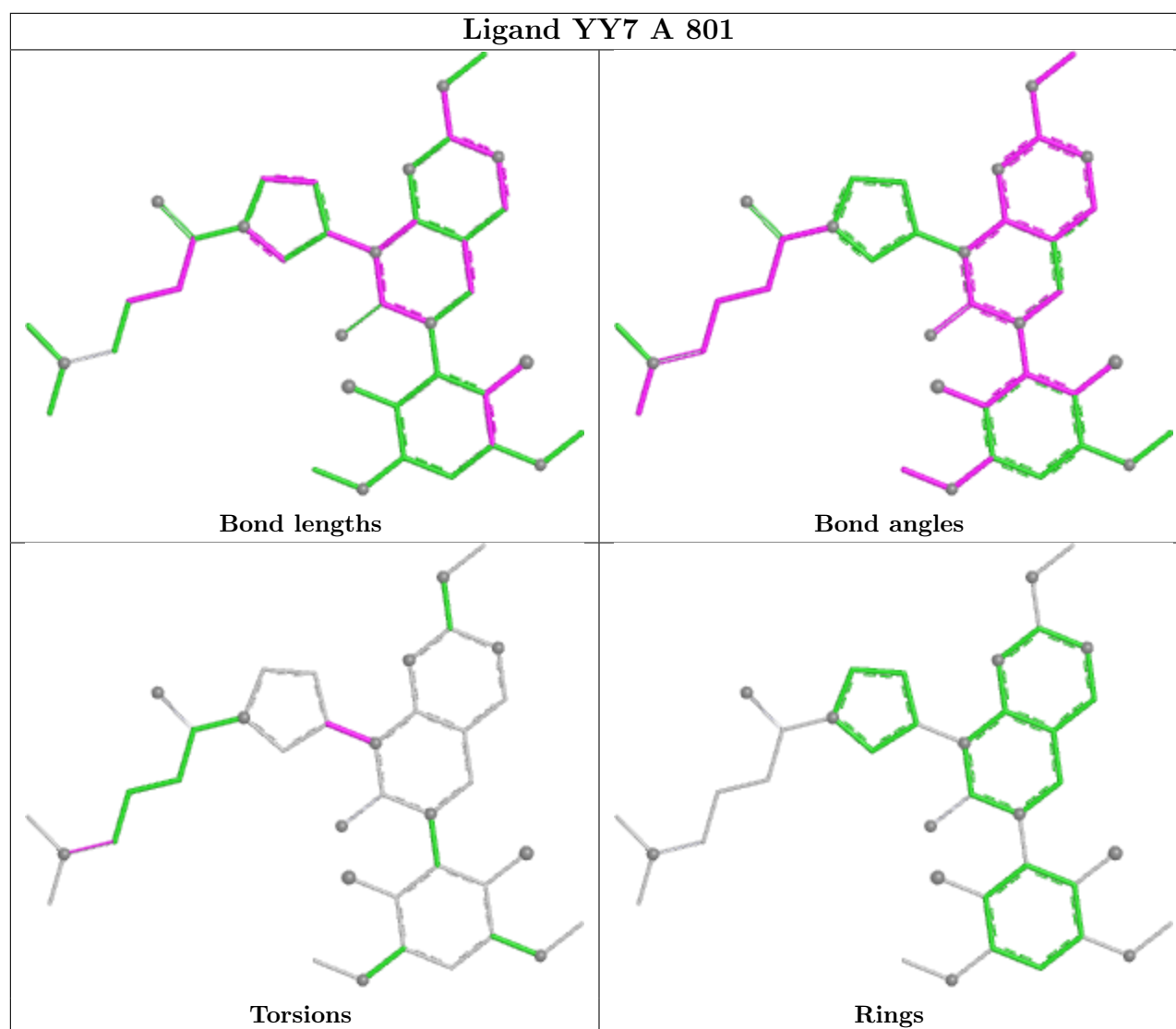
Bond angles



Torsions



Rings



5.7 Other polymers [i](#)

There are no such residues in this entry.

5.8 Polymer linkage issues [i](#)

There are no chain breaks in this entry.

6 Fit of model and data

6.1 Protein, DNA and RNA chains

In the following table, the column labelled ‘#RSRZ> 2’ contains the number (and percentage) of RSRZ outliers, followed by percent RSRZ outliers for the chain as percentile scores relative to all X-ray entries and entries of similar resolution. The OWAB column contains the minimum, median, 95th percentile and maximum values of the occupancy-weighted average B-factor per residue. The column labelled ‘Q< 0.9’ lists the number of (and percentage) of residues with an average occupancy less than 0.9.

Mol	Chain	Analysed	<RSRZ>	#RSRZ>2	OWAB(Å ²)	Q<0.9
1	A	276/311 (88%)	0.01	7 (2%) 58 61	12, 33, 60, 72	2 (0%)
1	B	264/311 (84%)	0.13	14 (5%) 32 35	15, 35, 57, 78	1 (0%)
All	All	540/622 (86%)	0.07	21 (3%) 43 46	12, 34, 59, 78	3 (0%)

All (21) RSRZ outliers are listed below:

Mol	Chain	Res	Type	RSRZ
1	B	503	ASP	3.8
1	A	763	ASN	3.4
1	A	710	PHE	3.3
1	A	465	LEU	3.3
1	B	662	LEU	3.2
1	A	582	GLU	3.1
1	A	588	SER	2.8
1	A	583	TYR	2.5
1	B	644	LEU	2.5
1	B	706	VAL	2.4
1	B	643	GLY	2.4
1	B	724	ASN	2.4
1	B	663	PRO	2.2
1	B	762	SER	2.2
1	B	673	PHE	2.2
1	B	465	LEU	2.2
1	B	505	PRO	2.1
1	B	502	LYS	2.1
1	A	765	GLU	2.1
1	B	727	ASN	2.0
1	B	498	ILE	2.0

6.2 Non-standard residues in protein, DNA, RNA chains [i](#)

There are no non-standard protein/DNA/RNA residues in this entry.

6.3 Carbohydrates [i](#)

There are no oligosaccharides in this entry.

6.4 Ligands [i](#)

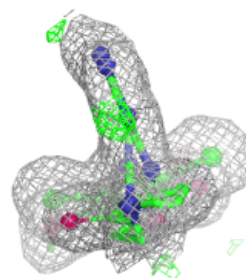
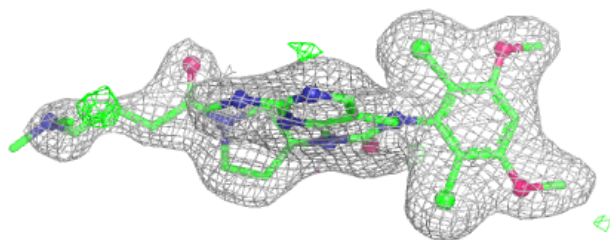
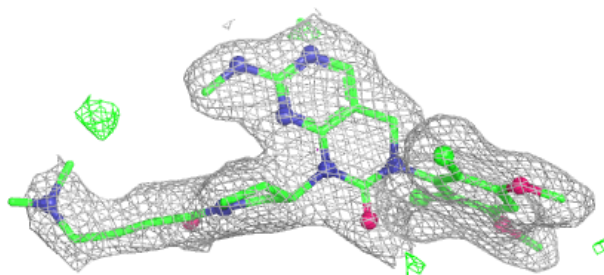
In the following table, the Atoms column lists the number of modelled atoms in the group and the number defined in the chemical component dictionary. The B-factors column lists the minimum, median, 95th percentile and maximum values of B factors of atoms in the group. The column labelled 'Q< 0.9' lists the number of atoms with occupancy less than 0.9.

Mol	Type	Chain	Res	Atoms	RSCC	RSR	B-factors(\AA^2)	Q<0.9
3	SO4	A	802	5/5	0.84	0.12	58,65,68,70	0
2	YY7	A	801	38/38	0.96	0.08	22,28,57,61	0
2	YY7	B	801	35/38	0.97	0.06	23,26,41,46	0

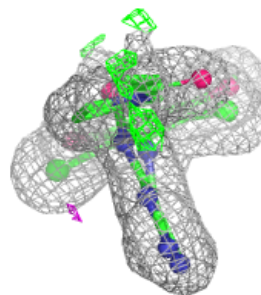
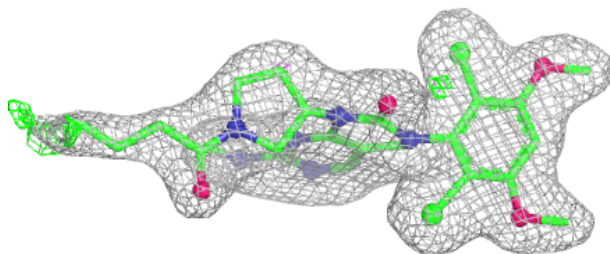
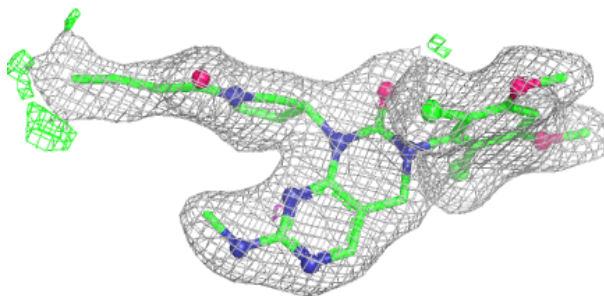
The following is a graphical depiction of the model fit to experimental electron density of all instances of the Ligand of Interest. In addition, ligands with molecular weight > 250 and outliers as shown on the geometry validation Tables will also be included. Each fit is shown from different orientation to approximate a three-dimensional view.

Electron density around YY7 A 801:

$2mF_o-DF_c$ (at 0.7 rmsd) in gray
 mF_o-DF_c (at 3 rmsd) in purple (negative)
and green (positive)

**Electron density around YY7 B 801:**

$2mF_o-DF_c$ (at 0.7 rmsd) in gray
 mF_o-DF_c (at 3 rmsd) in purple (negative)
and green (positive)



6.5 Other polymers [i](#)

There are no such residues in this entry.