



wwPDB X-ray Structure Validation Summary Report ⓘ

Mar 15, 2026 – 10:18 AM UTC

PDB ID : 5BPS / pdb_00005bps
Title : Structure of the yeast F1FO ATPase C10 ring with oligomycin A
Authors : Symersky, J.; Xu, T.; Mueller, D.M.
Deposited on : 2015-05-28
Resolution : 2.10 Å(reported)

This is a wwPDB X-ray Structure Validation Summary Report for a publicly released PDB entry.

We welcome your comments at validation@mail.wwpdb.org

A user guide is available at

<https://www.wwpdb.org/validation/2017/XrayValidationReportHelp>

with specific help available everywhere you see the ⓘ symbol.

The types of validation reports are described at

<http://www.wwpdb.org/validation/2017/FAQs#types>.

The following versions of software and data (see [references ⓘ](#)) were used in the production of this report:

MolProbity : 4-5-2 with Phenix2.0
Mogul : 2022.3.0, CSD as543be (2022)
Xtrriage (Phenix) : 2.0
EDS : 3.0
Buster-report : wwPDB partial adaption of 1.1.7 (2018)
Percentile statistics : 20250101.v01 (using entries in the PDB archive January 1st 2025)
CCP4 : 9.0.010 (Gargrove)
Density-Fitness : 1.0.12
Ideal geometry (proteins) : Engh & Huber (2001)
Ideal geometry (DNA, RNA) : Parkinson et al. (1996)
Validation Pipeline (wwPDB-VP) : 2.49

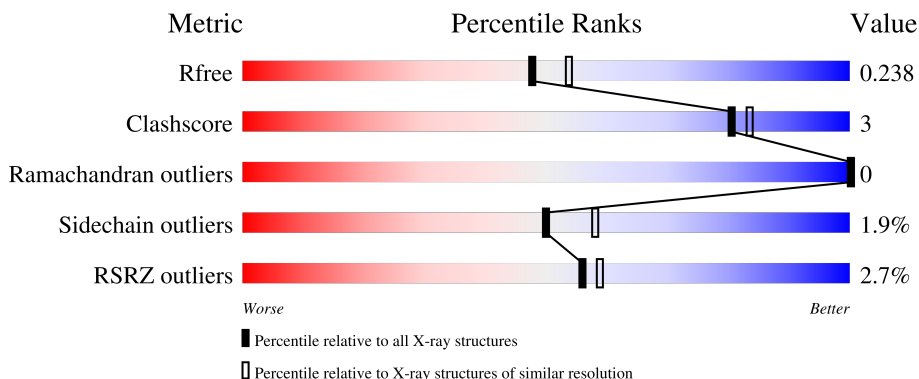
1 Overall quality at a glance

The following experimental techniques were used to determine the structure:

X-RAY DIFFRACTION

The reported resolution of this entry is 2.10 Å.

Percentile scores (ranging between 0-100) for global validation metrics of the entry are shown in the following graphic. The table shows the number of entries on which the scores are based.



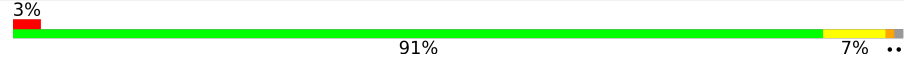
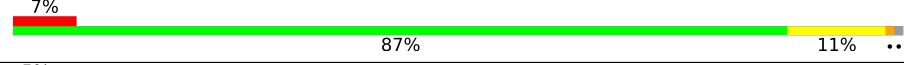
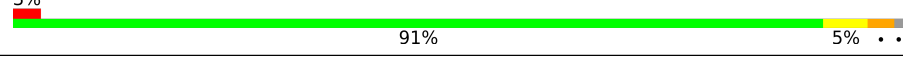
Metric	Whole archive (#Entries)	Similar resolution (#Entries, resolution range(Å))
R_{free}	180053	6658 (2.10-2.10)
Clashscore	190562	7164 (2.10-2.10)
Ramachandran outliers	187476	7099 (2.10-2.10)
Sidechain outliers	187428	7100 (2.10-2.10)
RSRZ outliers	180081	6662 (2.10-2.10)

The table below summarises the geometric issues observed across the polymeric chains and their fit to the electron density. The red, orange, yellow and green segments of the lower bar indicate the fraction of residues that contain outliers for ≥ 3 , 2, 1 and 0 types of geometric quality criteria respectively. A grey segment represents the fraction of residues that are not modelled. The numeric value for each fraction is indicated below the corresponding segment, with a dot representing fractions $\leq 5\%$. The upper red bar (where present) indicates the fraction of residues that have poor fit to the electron density. The numeric value is given above the bar.

Mol	Chain	Length	Quality of chain
1	A	76	 91% 5% 3% 1%
1	B	76	 99% 1% 3%
1	C	76	 91% 8% 1%
1	D	76	 91% 7% 2%
1	E	76	 91% 7% 2% 3%

Continued on next page...

Continued from previous page...

Mol	Chain	Length	Quality of chain
1	K	76	
1	L	76	
1	M	76	
1	N	76	
1	O	76	

2 Entry composition [i](#)

There are 3 unique types of molecules in this entry. The entry contains 6011 atoms, of which 0 are hydrogens and 0 are deuteriums.

In the tables below, the ZeroOcc column contains the number of atoms modelled with zero occupancy, the AltConf column contains the number of residues with at least one atom in alternate conformation and the Trace column contains the number of residues modelled with at most 2 atoms.

- Molecule 1 is a protein called ATP synthase subunit 9, mitochondrial.

Mol	Chain	Residues	Atoms					ZeroOcc	AltConf	Trace
			Total	C	N	O	S			
1	A	74	545	365	82	95	3	0	3	0
1	B	75	554	372	83	96	3	0	4	0
1	C	75	547	365	83	96	3	0	3	0
1	D	74	545	365	82	95	3	0	3	0
1	E	74	546	366	82	95	3	0	3	0
1	K	75	551	369	83	96	3	0	4	0
1	L	75	542	361	82	96	3	0	3	0
1	M	75	543	361	83	96	3	0	3	0
1	N	75	553	370	83	96	4	0	3	0
1	O	75	550	368	83	96	3	0	3	0

There are 10 discrepancies between the modelled and reference sequences:

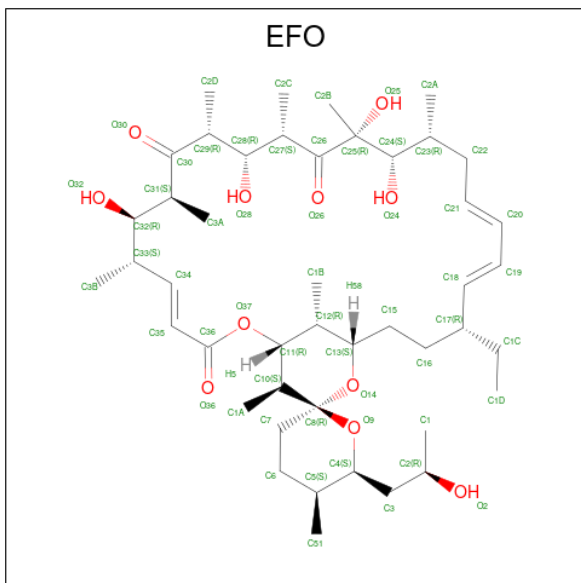
Chain	Residue	Modelled	Actual	Comment	Reference
A	1	FME	-	initiating methionine	UNP P61829
B	1	FME	-	initiating methionine	UNP P61829
C	1	FME	-	initiating methionine	UNP P61829
D	1	FME	-	initiating methionine	UNP P61829
E	1	FME	-	initiating methionine	UNP P61829
K	1	FME	-	initiating methionine	UNP P61829
L	1	FME	-	initiating methionine	UNP P61829
M	1	FME	-	initiating methionine	UNP P61829
N	1	FME	-	initiating methionine	UNP P61829

Continued on next page...

Continued from previous page...

Chain	Residue	Modelled	Actual	Comment	Reference
O	1	FME	-	initiating methionine	UNP P61829

- Molecule 2 is Oligomycin A (CCD ID: EFO) (formula: $C_{45}H_{74}O_{11}$).



Mol	Chain	Residues	Atoms			ZeroOcc	AltConf
2	B	1	Total	C	O	0	0
			56	45	11		
2	B	1	Total	C	O	0	0
			56	45	11		
2	E	1	Total	C	O	0	0
			56	45	11		
2	K	1	Total	C	O	0	0
			56	45	11		
2	L	1	Total	C	O	0	0
			56	45	11		
2	M	1	Total	C	O	0	0
			56	45	11		
2	O	1	Total	C	O	0	0
			56	45	11		

- Molecule 3 is water.

Mol	Chain	Residues	Atoms		ZeroOcc	AltConf
3	A	10	Total	O	0	0
			10	10		
3	B	20	Total	O	0	0
			20	20		

Continued on next page...

Continued from previous page...

Mol	Chain	Residues	Atoms		ZeroOcc	AltConf
3	C	20	Total 20	O 20	0	0
3	D	12	Total 12	O 12	0	0
3	E	12	Total 12	O 12	0	0
3	K	10	Total 10	O 10	0	0
3	L	13	Total 13	O 13	0	0
3	M	15	Total 15	O 15	0	0
3	N	13	Total 13	O 13	0	0
3	O	18	Total 18	O 18	0	0

3 Residue-property plots [i](#)

These plots are drawn for all protein, RNA, DNA and oligosaccharide chains in the entry. The first graphic for a chain summarises the proportions of the various outlier classes displayed in the second graphic. The second graphic shows the sequence view annotated by issues in geometry and electron density. Residues are color-coded according to the number of geometric quality criteria for which they contain at least one outlier: green = 0, yellow = 1, orange = 2 and red = 3 or more. A red dot above a residue indicates a poor fit to the electron density ($RSRZ > 2$). Stretches of 2 or more consecutive residues without any outlier are shown as a green connector. Residues present in the sample, but not in the model, are shown in grey.

- Molecule 1: ATP synthase subunit 9, mitochondrial



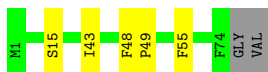
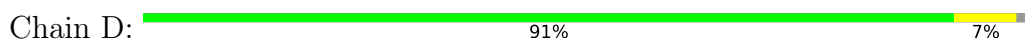
- Molecule 1: ATP synthase subunit 9, mitochondrial



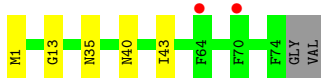
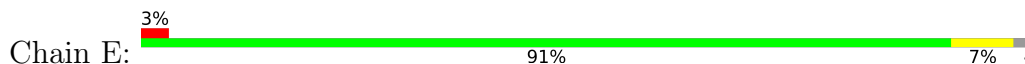
- Molecule 1: ATP synthase subunit 9, mitochondrial



- Molecule 1: ATP synthase subunit 9, mitochondrial



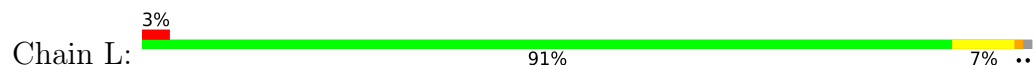
- Molecule 1: ATP synthase subunit 9, mitochondrial



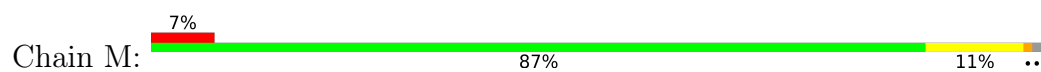
- Molecule 1: ATP synthase subunit 9, mitochondrial



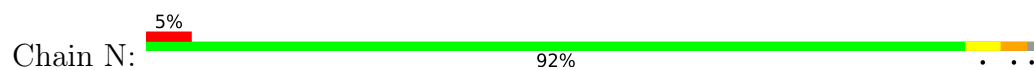
- Molecule 1: ATP synthase subunit 9, mitochondrial



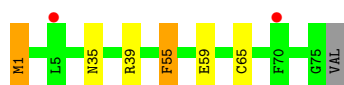
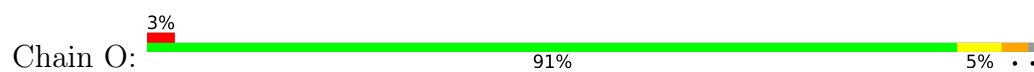
- Molecule 1: ATP synthase subunit 9, mitochondrial



- Molecule 1: ATP synthase subunit 9, mitochondrial



- Molecule 1: ATP synthase subunit 9, mitochondrial



4 Data and refinement statistics

Property	Value	Source
Space group	I 41 2 2	Depositor
Cell constants a, b, c, α , β , γ	76.22Å 76.22Å 489.19Å 90.00° 90.00° 90.00°	Depositor
Resolution (Å)	50.00 – 2.10 50.00 – 2.10	Depositor EDS
% Data completeness (in resolution range)	99.8 (50.00-2.10) 99.8 (50.00-2.10)	Depositor EDS
R_{merge}	0.09	Depositor
R_{sym}	0.09	Depositor
$\langle I/\sigma(I) \rangle$ ¹	3.25 (at 2.10Å)	Xtrriage
Refinement program	REFMAC 5.6.0117	Depositor
R, R_{free}	0.201 , 0.239 0.200 , 0.238	Depositor DCC
R_{free} test set	2164 reflections (5.03%)	wwPDB-VP
Wilson B-factor (Å ²)	22.3	Xtrriage
Anisotropy	0.059	Xtrriage
Bulk solvent k_{sol} (e/Å ³), B_{sol} (Å ²)	0.38 , 68.8	EDS
L-test for twinning ²	$\langle L \rangle = 0.51$, $\langle L^2 \rangle = 0.35$	Xtrriage
Estimated twinning fraction	No twinning to report.	Xtrriage
F_o, F_c correlation	0.95	EDS
Total number of atoms	6011	wwPDB-VP
Average B, all atoms (Å ²)	28.0	wwPDB-VP

Xtrriage's analysis on translational NCS is as follows: *The largest off-origin peak in the Patterson function is 19.21% of the height of the origin peak. No significant pseudotranslation is detected.*

¹Intensities estimated from amplitudes.

²Theoretical values of $\langle |L| \rangle$, $\langle L^2 \rangle$ for acentric reflections are 0.5, 0.333 respectively for untwinned datasets, and 0.375, 0.2 for perfectly twinned datasets.

5 Model quality [i](#)

5.1 Standard geometry [i](#)

Bond lengths and bond angles in the following residue types are not validated in this section: FME, EFO

The Z score for a bond length (or angle) is the number of standard deviations the observed value is removed from the expected value. A bond length (or angle) with $|Z| > 5$ is considered an outlier worth inspection. RMSZ is the root-mean-square of all Z scores of the bond lengths (or angles).

Mol	Chain	Bond lengths		Bond angles	
		RMSZ	# Z >5	RMSZ	# Z >5
1	A	0.65	0/561	0.91	0/760
1	B	0.63	0/573	0.82	0/776
1	C	0.62	0/562	0.85	0/761
1	D	0.61	0/561	0.86	0/760
1	E	0.66	0/561	0.86	0/760
1	K	0.60	0/570	0.90	0/772
1	L	0.62	0/558	0.86	0/757
1	M	0.60	0/558	0.89	0/756
1	N	0.62	0/566	0.86	0/766
1	O	0.64	0/565	0.84	0/765
All	All	0.63	0/5635	0.87	0/7633

Chiral center outliers are detected by calculating the chiral volume of a chiral center and verifying if the center is modelled as a planar moiety or with the opposite hand. A planarity outlier is detected by checking planarity of atoms in a peptide group, atoms in a mainchain group or atoms of a sidechain that are expected to be planar.

Mol	Chain	#Chirality outliers	#Planarity outliers
1	A	0	1
1	L	0	1
1	M	0	1
1	N	0	1
1	O	0	1
All	All	0	5

There are no bond length outliers.

There are no bond angle outliers.

There are no chirality outliers.

All (5) planarity outliers are listed below:

Mol	Chain	Res	Type	Group
1	A	1	FME	Mainchain
1	L	1	FME	Mainchain
1	M	1	FME	Mainchain
1	N	1	FME	Mainchain
1	O	1	FME	Peptide

5.2 Too-close contacts [i](#)

In the following table, the Non-H and H(model) columns list the number of non-hydrogen atoms and hydrogen atoms in the chain respectively. The H(added) column lists the number of hydrogen atoms added and optimized by MolProbity. The Clashes column lists the number of clashes within the asymmetric unit, whereas Symm-Clashes lists symmetry-related clashes.

Mol	Chain	Non-H	H(model)	H(added)	Clashes	Symm-Clashes
1	A	545	0	591	2	0
1	B	554	0	605	0	0
1	C	547	0	587	4	0
1	D	545	0	591	2	0
1	E	546	0	593	3	0
1	K	551	0	596	3	0
1	L	542	0	574	6	0
1	M	543	0	587	6	0
1	N	553	0	603	4	0
1	O	550	0	596	5	0
2	B	112	0	148	1	0
2	E	56	0	74	0	0
2	K	56	0	74	1	0
2	L	56	0	74	3	0
2	M	56	0	74	2	0
2	O	56	0	74	1	0
3	A	10	0	0	0	0
3	B	20	0	0	0	0
3	C	20	0	0	1	0
3	D	12	0	0	0	0
3	E	12	0	0	1	0
3	K	10	0	0	1	0
3	L	13	0	0	0	0
3	M	15	0	0	0	0
3	N	13	0	0	0	0
3	O	18	0	0	2	0
All	All	6011	0	6441	32	0

The all-atom clashscore is defined as the number of clashes found per 1000 atoms (including

hydrogen atoms). The all-atom clashscore for this structure is 3.

The worst 5 of 32 close contacts within the same asymmetric unit are listed below, sorted by their clash magnitude.

Atom-1	Atom-2	Interatomic distance (Å)	Clash overlap (Å)
1:L:63:LEU:HA	2:L:101:EFO:H72	1.59	0.83
1:C:35[B]:ASN:HD21	1:C:39:ARG:HE	1.45	0.64
2:B:101:EFO:H57	1:C:59:GLU:HG2	1.85	0.57
1:O:39:ARG:HD2	3:O:202:HOH:O	2.07	0.55
1:C:35[B]:ASN:ND2	3:C:102:HOH:O	2.45	0.49

There are no symmetry-related clashes.

5.3 Torsion angles [i](#)

5.3.1 Protein backbone [i](#)

In the following table, the Percentiles column shows the percent Ramachandran outliers of the chain as a percentile score with respect to all X-ray entries followed by that with respect to entries of similar resolution.

The Analysed column shows the number of residues for which the backbone conformation was analysed, and the total number of residues.

Mol	Chain	Analysed	Favoured	Allowed	Outliers	Percentiles	
1	A	77/76 (101%)	77 (100%)	0	0	100	100
1	B	79/76 (104%)	79 (100%)	0	0	100	100
1	C	78/76 (103%)	77 (99%)	1 (1%)	0	100	100
1	D	77/76 (101%)	77 (100%)	0	0	100	100
1	E	77/76 (101%)	76 (99%)	1 (1%)	0	100	100
1	K	79/76 (104%)	79 (100%)	0	0	100	100
1	L	78/76 (103%)	78 (100%)	0	0	100	100
1	M	78/76 (103%)	78 (100%)	0	0	100	100
1	N	78/76 (103%)	78 (100%)	0	0	100	100
1	O	78/76 (103%)	78 (100%)	0	0	100	100
All	All	779/760 (102%)	777 (100%)	2 (0%)	0	100	100

There are no Ramachandran outliers to report.

5.3.2 Protein sidechains [i](#)

In the following table, the Percentiles column shows the percent sidechain outliers of the chain as a percentile score with respect to all X-ray entries followed by that with respect to entries of similar resolution.

The Analysed column shows the number of residues for which the sidechain conformation was analysed, and the total number of residues.

Mol	Chain	Analysed	Rotameric	Outliers	Percentiles	
1	A	58/55 (106%)	56 (97%)	2 (3%)	32	35
1	B	59/55 (107%)	59 (100%)	0	100	100
1	C	57/55 (104%)	56 (98%)	1 (2%)	51	60
1	D	58/55 (106%)	56 (97%)	2 (3%)	32	35
1	E	58/55 (106%)	58 (100%)	0	100	100
1	K	58/55 (106%)	58 (100%)	0	100	100
1	L	56/55 (102%)	55 (98%)	1 (2%)	51	60
1	M	57/55 (104%)	55 (96%)	2 (4%)	32	35
1	N	58/55 (106%)	57 (98%)	1 (2%)	53	62
1	O	58/55 (106%)	57 (98%)	1 (2%)	53	62
All	All	577/550 (105%)	567 (98%)	10 (2%)	50	62

5 of 10 residues with a non-rotameric sidechain are listed below:

Mol	Chain	Res	Type
1	M	55	PHE
1	N	55	PHE
1	O	55	PHE
1	D	43	ILE
1	D	55	PHE

Sometimes sidechains can be flipped to improve hydrogen bonding and reduce clashes. There are no such sidechains identified.

5.3.3 RNA [i](#)

There are no RNA molecules in this entry.

5.4 Non-standard residues in protein, DNA, RNA chains [i](#)

10 non-standard protein/DNA/RNA residues are modelled in this entry.

In the following table, the Counts columns list the number of bonds (or angles) for which Mogul statistics could be retrieved, the number of bonds (or angles) that are observed in the model and the number of bonds (or angles) that are defined in the Chemical Component Dictionary. The Link column lists molecule types, if any, to which the group is linked. The Z score for a bond length (or angle) is the number of standard deviations the observed value is removed from the expected value. A bond length (or angle) with $|Z| > 2$ is considered an outlier worth inspection. RMSZ is the root-mean-square of all Z scores of the bond lengths (or angles).

Mol	Type	Chain	Res	Link	Bond lengths			Bond angles		
					Counts	RMSZ	# Z > 2	Counts	RMSZ	# Z > 2
1	FME	M	1	1	5,6,10	0.74	0	4,6,11	0.93	0
1	FME	D	1	1	5,6,10	0.83	0	4,6,11	1.17	0
1	FME	A	1	1	5,6,10	0.78	0	4,6,11	1.02	0
1	FME	E	1	1	6,7,10	0.63	0	7,7,11	1.65	3 (42%)
1	FME	O	1	1	6,7,10	0.61	0	7,7,11	1.50	1 (14%)
1	FME	K	1	1	5,6,10	0.75	0	4,6,11	1.35	0
1	FME	C	1	1	6,7,10	0.68	0	7,7,11	1.19	0
1	FME	N	1	1	8,9,10	0.74	0	8,9,11	1.18	1 (12%)
1	FME	L	1	1	5,6,10	0.76	0	4,6,11	1.19	0
1	FME	B	1	1	5,6,10	0.72	0	4,6,11	1.30	0

In the following table, the Chirals column lists the number of chiral outliers, the number of chiral centers analysed, the number of these observed in the model and the number defined in the Chemical Component Dictionary. Similar counts are reported in the Torsion and Rings columns. '-' means no outliers of that kind were identified.

Mol	Type	Chain	Res	Link	Chirals	Torsions	Rings
1	FME	M	1	1	-	0/3/5/11	-
1	FME	D	1	1	-	2/3/5/11	-
1	FME	A	1	1	-	0/3/5/11	-
1	FME	E	1	1	-	3/5/7/11	-
1	FME	O	1	1	-	3/5/7/11	-
1	FME	K	1	1	-	1/3/5/11	-
1	FME	C	1	1	-	2/5/7/11	-
1	FME	N	1	1	-	3/7/9/11	-
1	FME	L	1	1	-	0/3/5/11	-
1	FME	B	1	1	-	2/3/5/11	-

There are no bond length outliers.

All (5) bond angle outliers are listed below:

Mol	Chain	Res	Type	Atoms	Z	Observed(°)	Ideal(°)
1	O	1	FME	O-C-CA	-2.69	117.85	124.77
1	E	1	FME	O-C-CA	-2.37	118.69	124.77
1	E	1	FME	O1-CN-N	-2.28	119.44	125.32
1	N	1	FME	O-C-CA	-2.10	119.36	124.77
1	E	1	FME	CA-N-CN	-2.00	119.74	122.82

There are no chirality outliers.

5 of 16 torsion outliers are listed below:

Mol	Chain	Res	Type	Atoms
1	B	1	FME	O-C-CA-CB
1	D	1	FME	O1-CN-N-CA
1	D	1	FME	O-C-CA-CB
1	E	1	FME	O1-CN-N-CA
1	N	1	FME	O-C-CA-CB

There are no ring outliers.

No monomer is involved in short contacts.

5.5 Carbohydrates [i](#)

There are no oligosaccharides in this entry.

5.6 Ligand geometry [i](#)

7 ligands are modelled in this entry.

In the following table, the Counts columns list the number of bonds (or angles) for which Mogul statistics could be retrieved, the number of bonds (or angles) that are observed in the model and the number of bonds (or angles) that are defined in the Chemical Component Dictionary. The Link column lists molecule types, if any, to which the group is linked. The Z score for a bond length (or angle) is the number of standard deviations the observed value is removed from the expected value. A bond length (or angle) with $|Z| > 2$ is considered an outlier worth inspection. RMSZ is the root-mean-square of all Z scores of the bond lengths (or angles).

Mol	Type	Chain	Res	Link	Bond lengths			Bond angles		
					Counts	RMSZ	# Z > 2	Counts	RMSZ	# Z > 2
2	EFO	B	101	-	57,58,58	2.45	14 (24%)	72,85,85	1.49	9 (12%)
2	EFO	O	101	-	57,58,58	2.30	11 (19%)	72,85,85	1.32	10 (13%)

Mol	Type	Chain	Res	Link	Bond lengths			Bond angles		
					Counts	RMSZ	# Z > 2	Counts	RMSZ	# Z > 2
2	EFO	B	102	-	57,58,58	2.27	17 (29%)	72,85,85	1.25	8 (11%)
2	EFO	L	101	-	57,58,58	2.42	12 (21%)	72,85,85	1.69	12 (16%)
2	EFO	E	101	-	57,58,58	2.39	15 (26%)	72,85,85	1.32	10 (13%)
2	EFO	M	101	-	57,58,58	2.44	13 (22%)	72,85,85	1.44	10 (13%)
2	EFO	K	101	-	57,58,58	2.33	15 (26%)	72,85,85	1.44	12 (16%)

In the following table, the Chirals column lists the number of chiral outliers, the number of chiral centers analysed, the number of these observed in the model and the number defined in the Chemical Component Dictionary. Similar counts are reported in the Torsion and Rings columns. '-' means no outliers of that kind were identified.

Mol	Type	Chain	Res	Link	Chirals	Torsions	Rings
2	EFO	B	101	-	-	8/72/110/110	0/2/3/3
2	EFO	O	101	-	-	3/72/110/110	0/2/3/3
2	EFO	B	102	-	-	3/72/110/110	0/2/3/3
2	EFO	L	101	-	-	8/72/110/110	0/2/3/3
2	EFO	E	101	-	-	4/72/110/110	0/2/3/3
2	EFO	M	101	-	-	4/72/110/110	0/2/3/3
2	EFO	K	101	-	-	6/72/110/110	0/2/3/3

The worst 5 of 97 bond length outliers are listed below:

Mol	Chain	Res	Type	Atoms	Z	Observed(Å)	Ideal(Å)
2	B	101	EFO	C25-C26	-9.26	1.42	1.54
2	E	101	EFO	C25-C26	-8.97	1.42	1.54
2	O	101	EFO	C25-C26	-8.88	1.42	1.54
2	L	101	EFO	C25-C26	-8.85	1.42	1.54
2	M	101	EFO	C25-C26	-8.45	1.43	1.54

The worst 5 of 71 bond angle outliers are listed below:

Mol	Chain	Res	Type	Atoms	Z	Observed(°)	Ideal(°)
2	L	101	EFO	O9-C4-C3	5.96	113.44	105.95
2	B	101	EFO	O9-C4-C3	5.77	113.20	105.95
2	O	101	EFO	C2-C3-C4	-5.38	108.41	114.78
2	E	101	EFO	O9-C4-C3	4.87	112.08	105.95
2	M	101	EFO	O9-C4-C3	4.68	111.84	105.95

There are no chirality outliers.

5 of 36 torsion outliers are listed below:

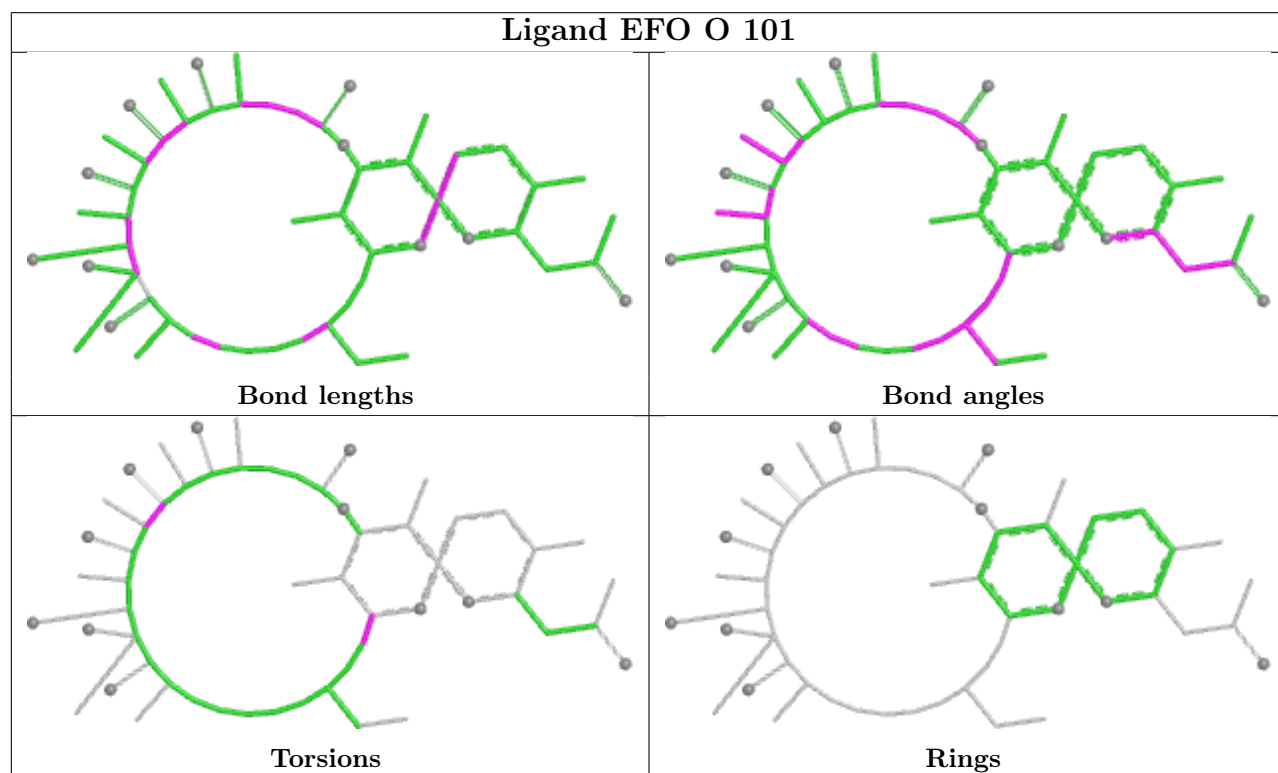
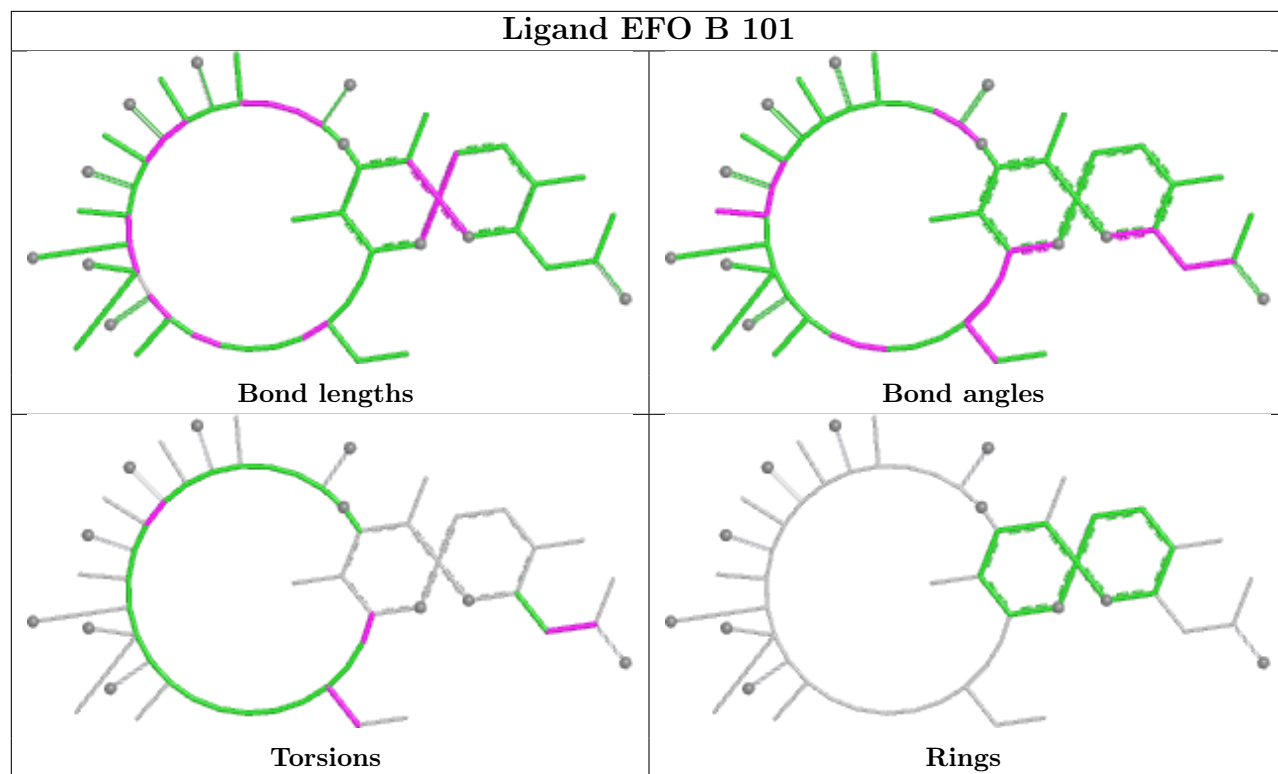
Mol	Chain	Res	Type	Atoms
2	B	101	EFO	C18-C17-C1C-C1D
2	B	101	EFO	C16-C17-C1C-C1D
2	B	101	EFO	O14-C13-C15-C16
2	B	101	EFO	C1-C2-C3-C4
2	B	101	EFO	O2-C2-C3-C4

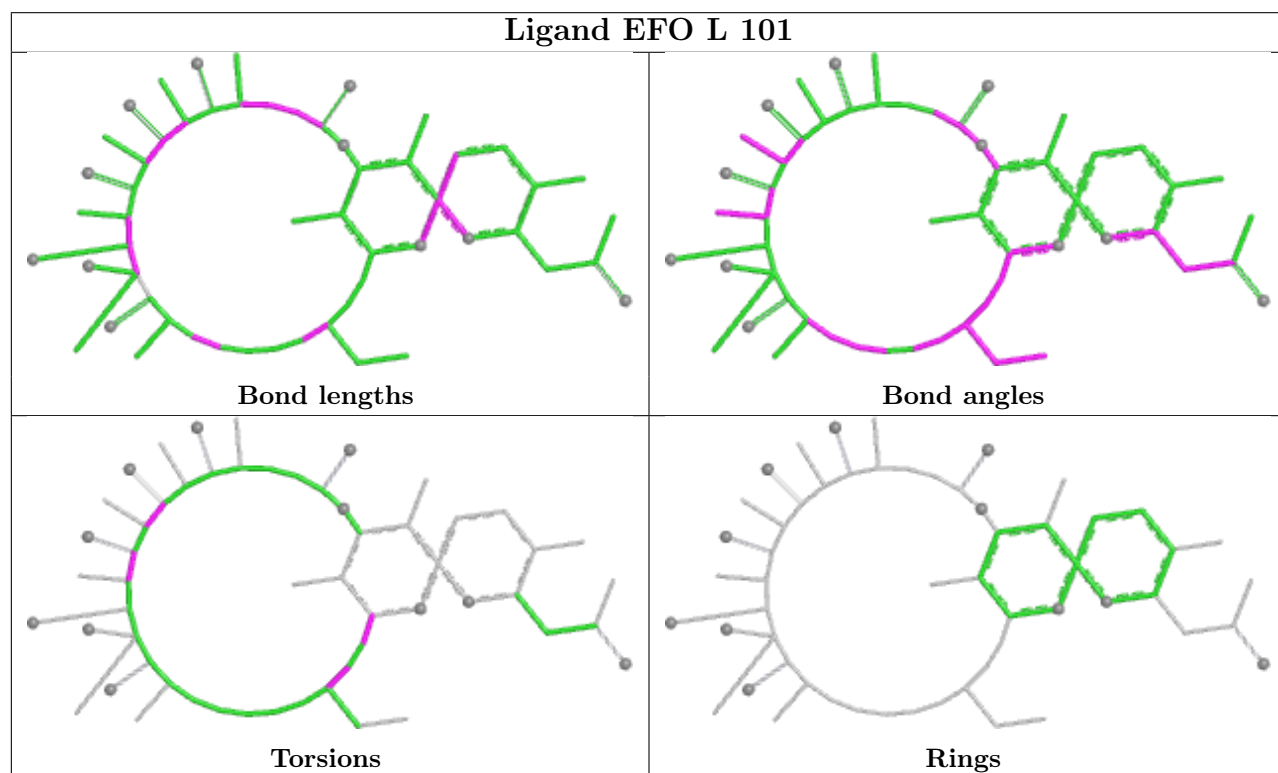
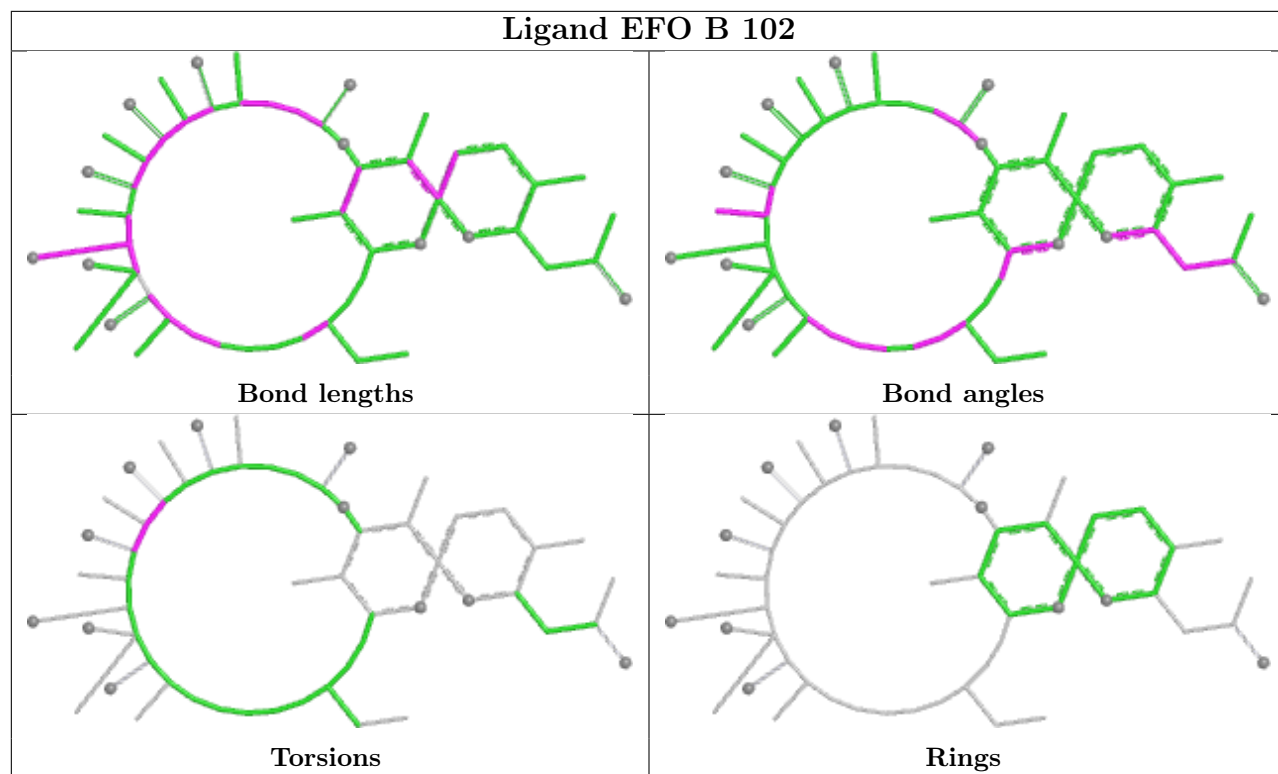
There are no ring outliers.

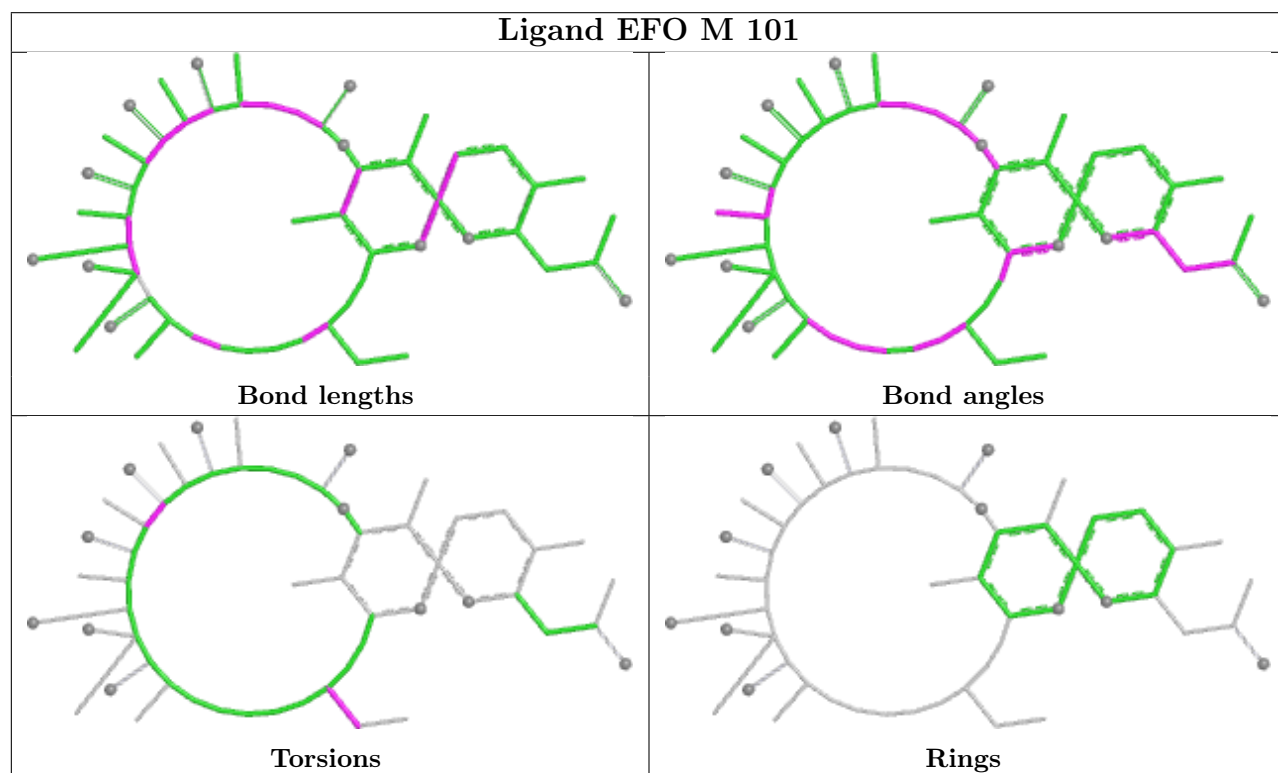
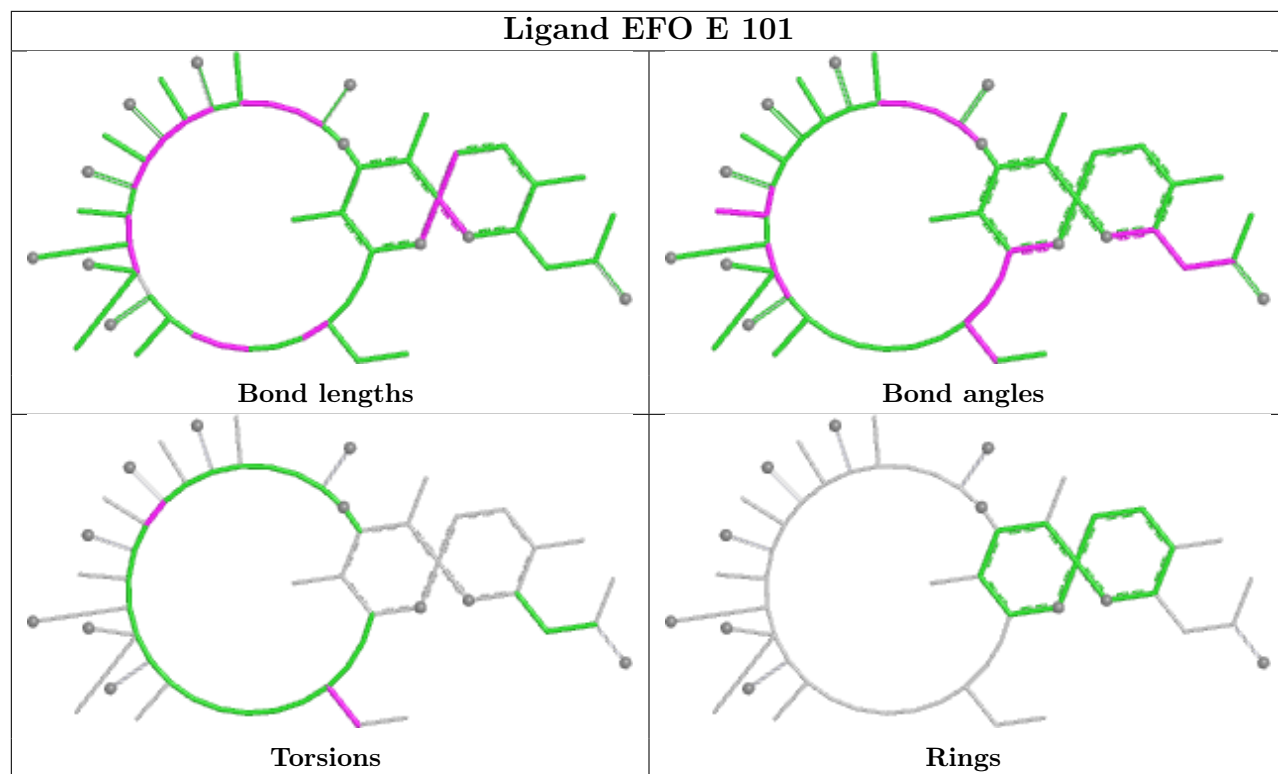
5 monomers are involved in 8 short contacts:

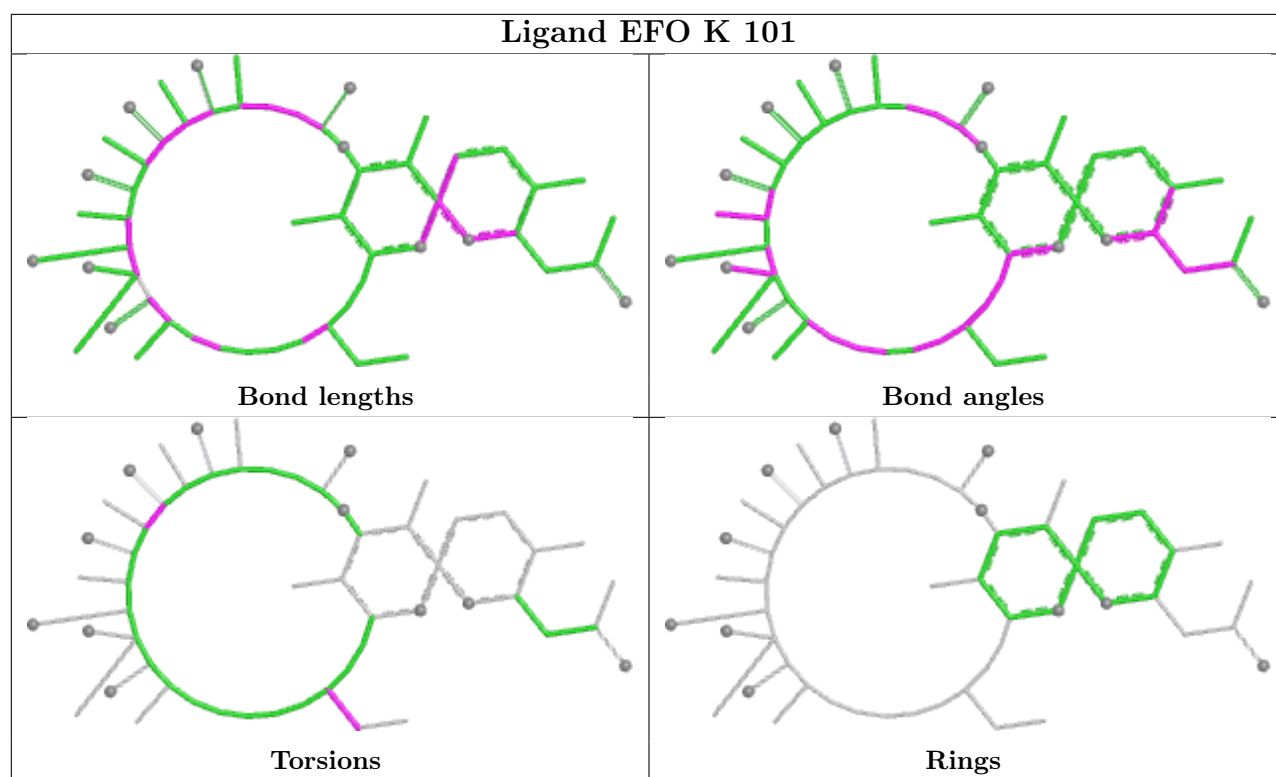
Mol	Chain	Res	Type	Clashes	Symm-Clashes
2	B	101	EFO	1	0
2	O	101	EFO	1	0
2	L	101	EFO	3	0
2	M	101	EFO	2	0
2	K	101	EFO	1	0

The following is a two-dimensional graphical depiction of Mogul quality analysis of bond lengths, bond angles, torsion angles, and ring geometry for all instances of the Ligand of Interest. In addition, ligands with molecular weight > 250 and outliers as shown on the validation Tables will also be included. For torsion angles, if less than 5% of the Mogul distribution of torsion angles is within 10 degrees of the torsion angle in question, then that torsion angle is considered an outlier. Any bond that is central to one or more torsion angles identified as an outlier by Mogul will be highlighted in the graph. For rings, the root-mean-square deviation (RMSD) between the ring in question and similar rings identified by Mogul is calculated over all ring torsion angles. If the average RMSD is greater than 60 degrees and the minimal RMSD between the ring in question and any Mogul-identified rings is also greater than 60 degrees, then that ring is considered an outlier. The outliers are highlighted in purple. The color gray indicates Mogul did not find sufficient equivalents in the CSD to analyse the geometry.









5.7 Other polymers [i](#)

There are no such residues in this entry.

5.8 Polymer linkage issues [i](#)

There are no chain breaks in this entry.

6 Fit of model and data

6.1 Protein, DNA and RNA chains

In the following table, the column labelled ‘#RSRZ> 2’ contains the number (and percentage) of RSRZ outliers, followed by percent RSRZ outliers for the chain as percentile scores relative to all X-ray entries and entries of similar resolution. The OWAB column contains the minimum, median, 95th percentile and maximum values of the occupancy-weighted average B-factor per residue. The column labelled ‘Q< 0.9’ lists the number of (and percentage) of residues with an average occupancy less than 0.9.

Mol	Chain	Analysed	<RSRZ>	#RSRZ>2	OWAB(Å ²)	Q<0.9
1	A	73/76 (96%)	0.00	1 (1%) 73 75	9, 21, 39, 50	3 (4%)
1	B	74/76 (97%)	-0.01	2 (2%) 56 59	9, 21, 38, 46	4 (5%)
1	C	74/76 (97%)	-0.02	1 (1%) 73 75	9, 22, 41, 52	3 (4%)
1	D	73/76 (96%)	-0.16	0 100 100	8, 22, 38, 44	3 (4%)
1	E	73/76 (96%)	0.02	2 (2%) 56 59	9, 22, 40, 47	3 (4%)
1	K	74/76 (97%)	0.15	1 (1%) 73 75	9, 25, 51, 57	4 (5%)
1	L	74/76 (97%)	0.22	2 (2%) 56 59	9, 28, 53, 58	3 (4%)
1	M	74/76 (97%)	0.45	5 (6%) 23 25	9, 26, 53, 69	3 (4%)
1	N	74/76 (97%)	0.16	4 (5%) 31 33	9, 25, 49, 58	3 (4%)
1	O	74/76 (97%)	0.24	2 (2%) 56 59	10, 24, 50, 56	3 (4%)
All	All	737/760 (96%)	0.11	20 (2%) 56 59	8, 23, 48, 69	32 (4%)

The worst 5 of 20 RSRZ outliers are listed below:

Mol	Chain	Res	Type	RSRZ
1	M	75	GLY	4.5
1	M	74	PHE	3.6
1	B	75	GLY	3.2
1	C	75	GLY	2.8
1	M	5	LEU	2.7

6.2 Non-standard residues in protein, DNA, RNA chains

In the following table, the Atoms column lists the number of modelled atoms in the group and the number defined in the chemical component dictionary. The B-factors column lists the minimum, median, 95th percentile and maximum values of B factors of atoms in the group. The column labelled ‘Q< 0.9’ lists the number of atoms with occupancy less than 0.9.

Mol	Type	Chain	Res	Atoms	RSCC	RSR	B-factors(\AA^2)	Q<0.9
1	FME	D	1	7/11	0.47	0.22	45,47,51,53	0
1	FME	B	1	7/11	0.55	0.19	49,50,54,58	0
1	FME	K	1	7/11	0.64	0.18	62,65,68,70	0
1	FME	L	1	7/11	0.69	0.17	60,63,66,70	0
1	FME	A	1	7/11	0.70	0.16	47,49,52,56	0
1	FME	O	1	8/11	0.73	0.15	57,59,64,66	0
1	FME	C	1	8/11	0.74	0.15	50,53,57,59	0
1	FME	M	1	7/11	0.77	0.13	55,57,60,65	0
1	FME	N	1	10/11	0.78	0.18	56,64,72,73	0
1	FME	E	1	8/11	0.78	0.15	47,49,54,58	0

6.3 Carbohydrates [i](#)

There are no oligosaccharides in this entry.

6.4 Ligands [i](#)

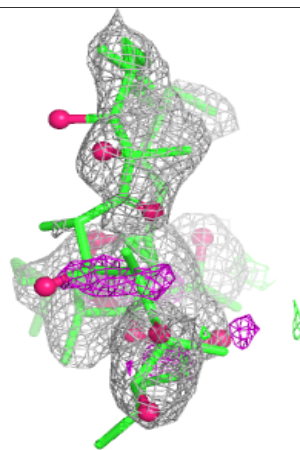
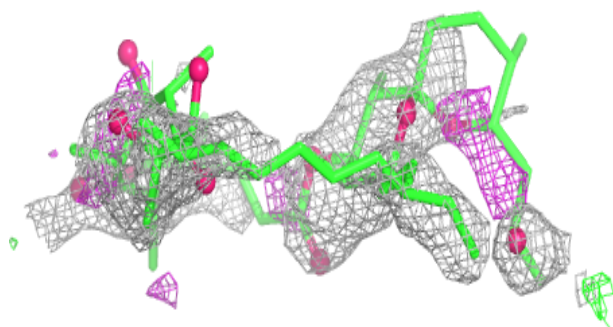
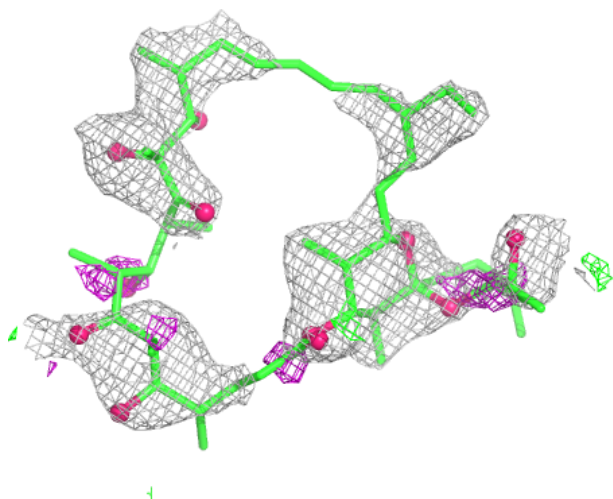
In the following table, the Atoms column lists the number of modelled atoms in the group and the number defined in the chemical component dictionary. The B-factors column lists the minimum, median, 95th percentile and maximum values of B factors of atoms in the group. The column labelled 'Q< 0.9' lists the number of atoms with occupancy less than 0.9.

Mol	Type	Chain	Res	Atoms	RSCC	RSR	B-factors(\AA^2)	Q<0.9
2	EFO	L	101	56/56	0.64	0.18	41,55,61,63	0
2	EFO	B	101	56/56	0.65	0.17	42,49,56,60	0
2	EFO	M	101	56/56	0.76	0.14	33,44,50,54	0
2	EFO	K	101	56/56	0.78	0.13	31,34,38,39	0
2	EFO	E	101	56/56	0.86	0.11	28,32,36,37	0
2	EFO	B	102	56/56	0.88	0.09	21,25,34,36	0
2	EFO	O	101	56/56	0.90	0.09	21,28,32,33	0

The following is a graphical depiction of the model fit to experimental electron density of all instances of the Ligand of Interest. In addition, ligands with molecular weight > 250 and outliers as shown on the geometry validation Tables will also be included. Each fit is shown from different orientation to approximate a three-dimensional view.

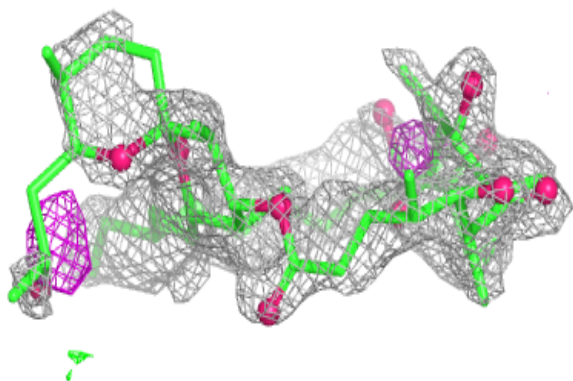
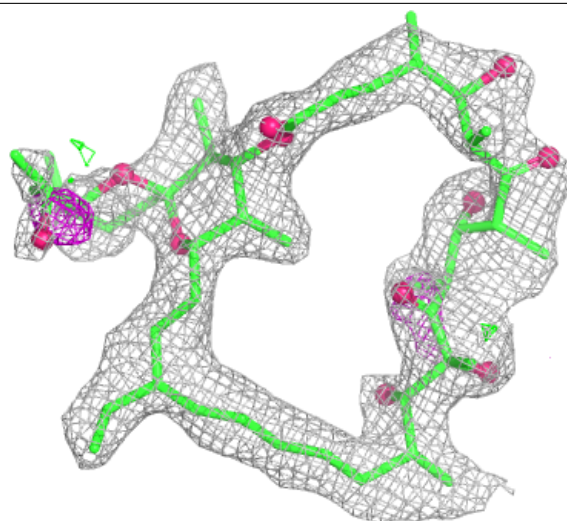
Electron density around EFO L 101:

$2mF_o-DF_c$ (at 0.7 rmsd) in gray
 mF_o-DF_c (at 3 rmsd) in purple (negative)
and green (positive)



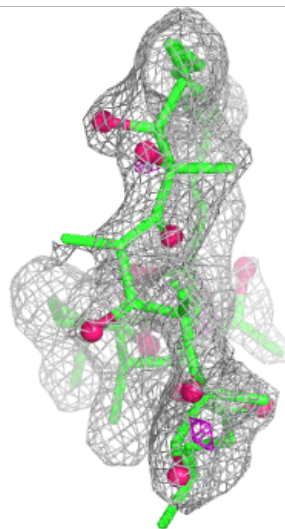
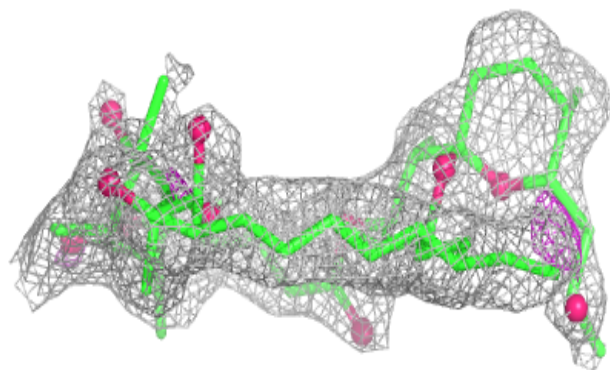
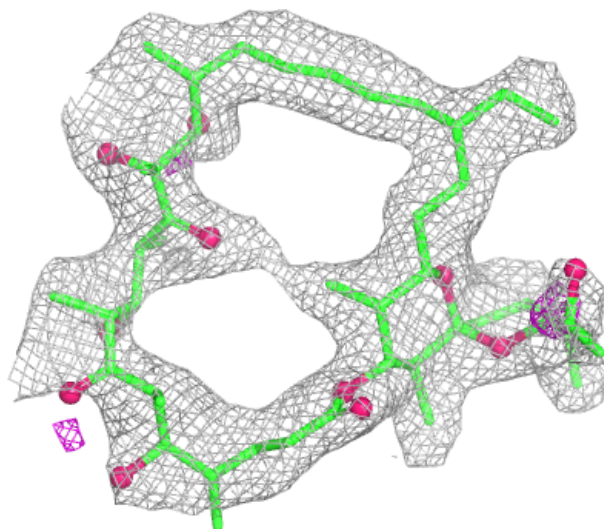
Electron density around EFO B 101:

$2mF_o-DF_c$ (at 0.7 rmsd) in gray
 mF_o-DF_c (at 3 rmsd) in purple (negative)
and green (positive)



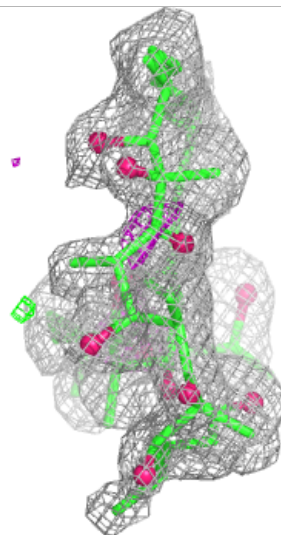
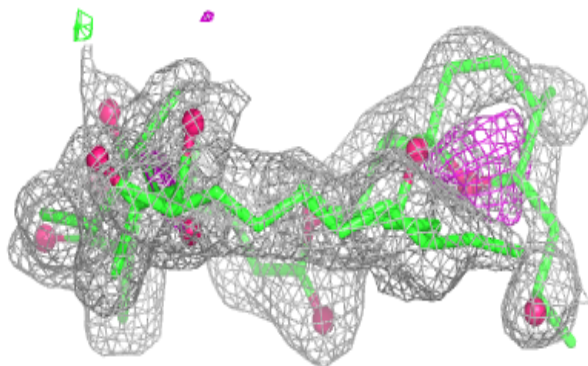
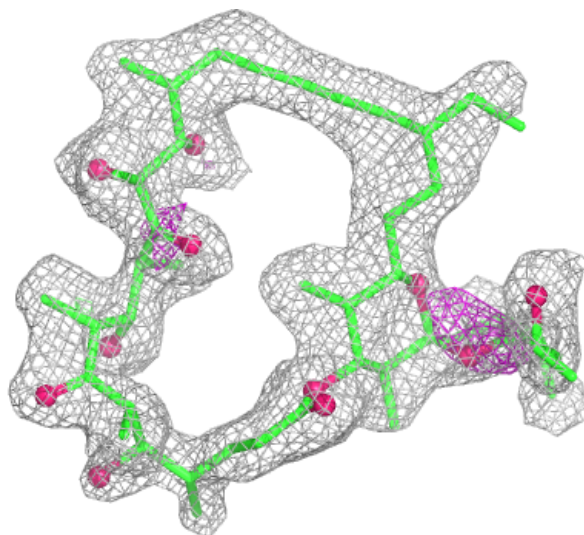
Electron density around EFO M 101:

$2mF_o-DF_c$ (at 0.7 rmsd) in gray
 mF_o-DF_c (at 3 rmsd) in purple (negative)
and green (positive)



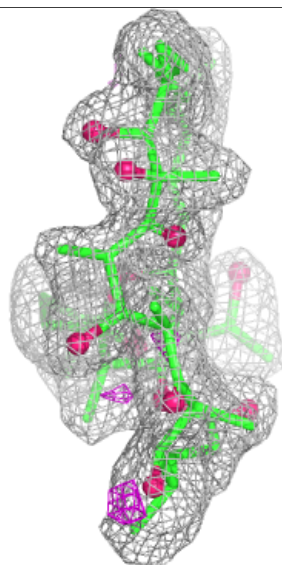
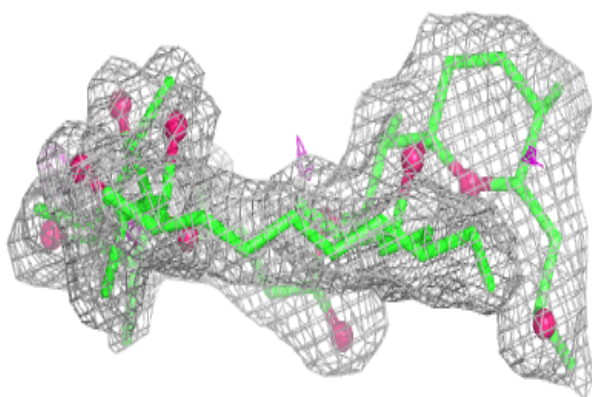
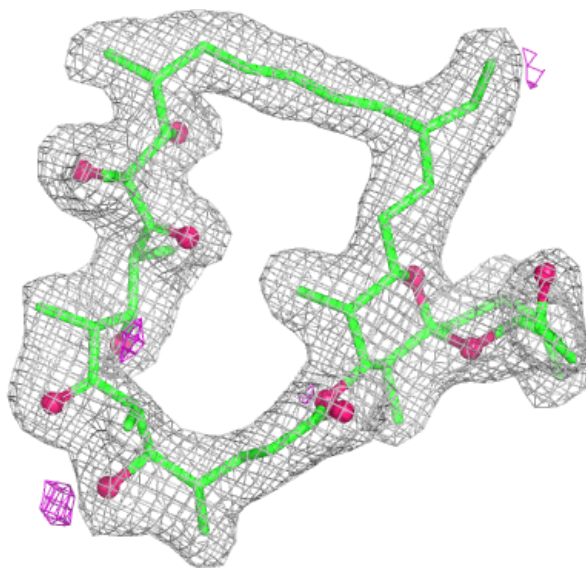
Electron density around EFO K 101:

$2mF_o-DF_c$ (at 0.7 rmsd) in gray
 mF_o-DF_c (at 3 rmsd) in purple (negative)
and green (positive)



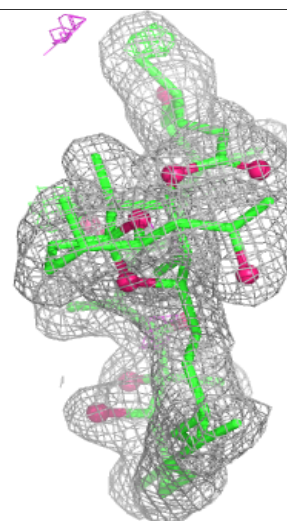
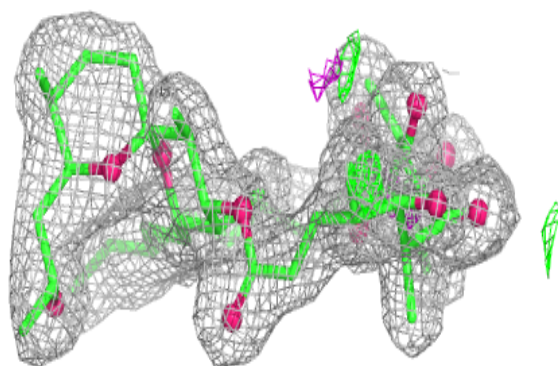
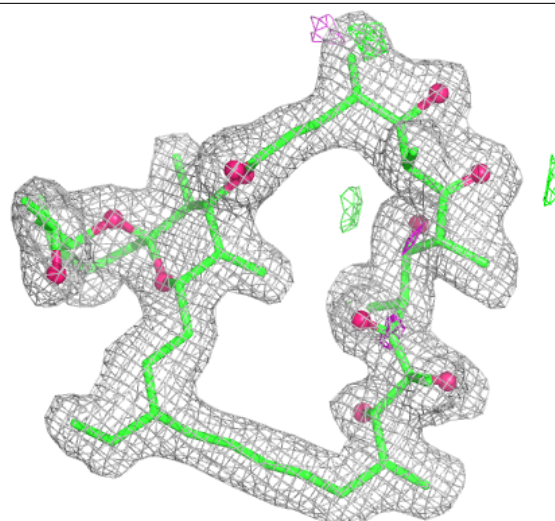
Electron density around EFO E 101:

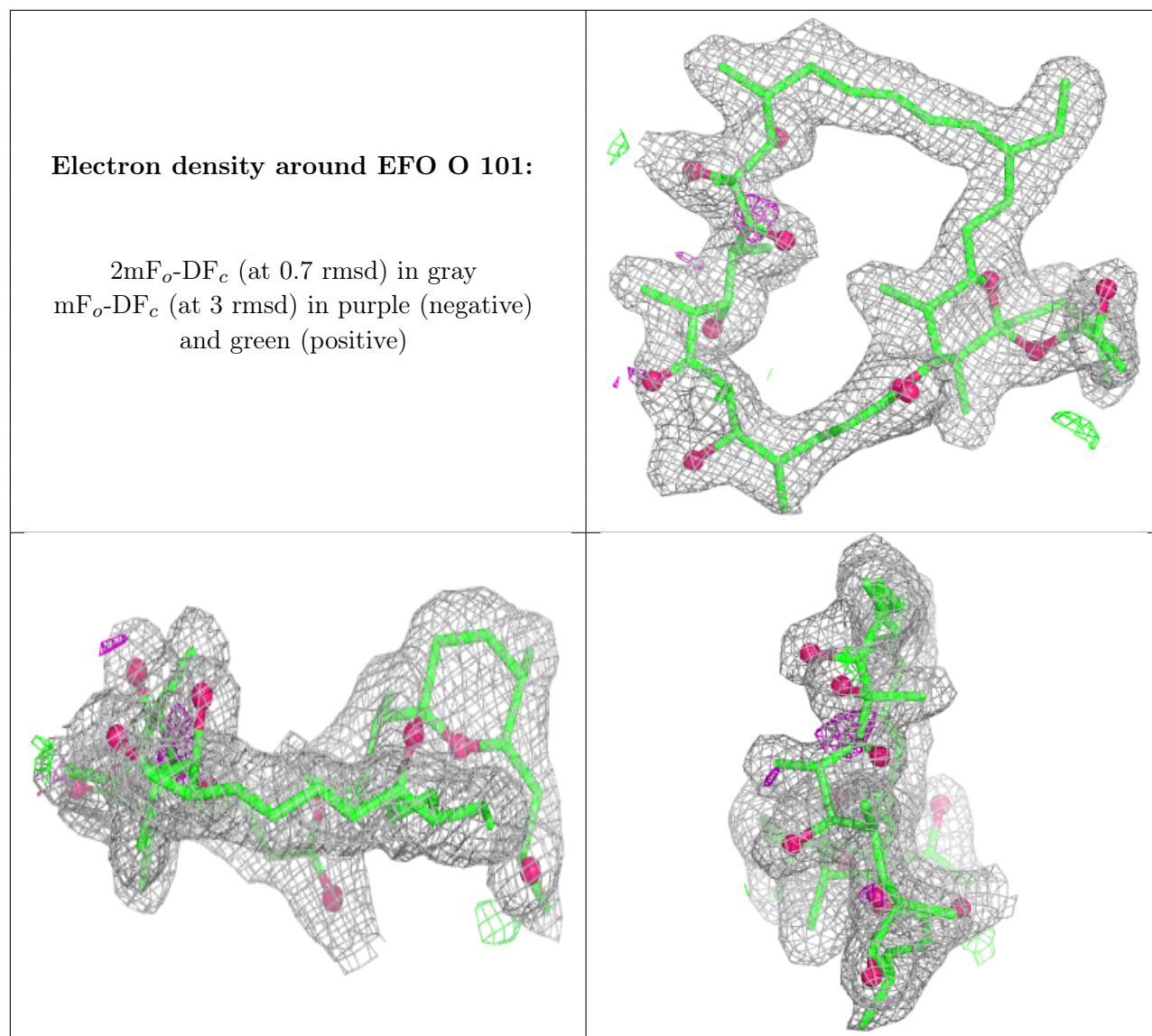
$2mF_o-DF_c$ (at 0.7 rmsd) in gray
 mF_o-DF_c (at 3 rmsd) in purple (negative)
and green (positive)



Electron density around EFO B 102:

$2mF_o-DF_c$ (at 0.7 rmsd) in gray
 mF_o-DF_c (at 3 rmsd) in purple (negative)
and green (positive)





6.5 Other polymers [\(i\)](#)

There are no such residues in this entry.