



wwPDB NMR Structure Validation Summary Report ⓘ

Mar 23, 2026 – 03:35 AM UTC

PDB ID : 4BIT / pdb_00004bit
BMRB ID : 19164
Title : solution structure of cerebral dopamine neurotrophic factor (CDNF)
Authors : Latge, C.; Cabral, K.M.S.; Raymundo, D.P.; Foguel, D.; Herrmann, T.; Almeida, M.S.
Deposited on : 2013-04-13

This is a wwPDB NMR Structure Validation Summary Report for a publicly released PDB entry.

We welcome your comments at validation@mail.wwpdb.org

A user guide is available at

<https://www.wwpdb.org/validation/2017/NMRValidationReportHelp>

with specific help available everywhere you see the ⓘ symbol.

The types of validation reports are described at

<http://www.wwpdb.org/validation/2017/FAQs#types>.

The following versions of software and data (see [references ⓘ](#)) were used in the production of this report:

MolProbity : 4-5-2 with Phenix2.0
Percentile statistics : 20250101.v01 (using entries in the PDB archive January 1st 2025)
wwPDB-RCI : v_1n_11_5_13_A (Berjanski et al., 2005)
PANAV : Wang et al. (2010)
wwPDB-ShiftChecker : v1.2
BMRB Restraints Analysis : v1.2
Ideal geometry (proteins) : Engh & Huber (2001)
Ideal geometry (DNA, RNA) : Parkinson et al. (1996)
Validation Pipeline (wwPDB-VP) : 2.49

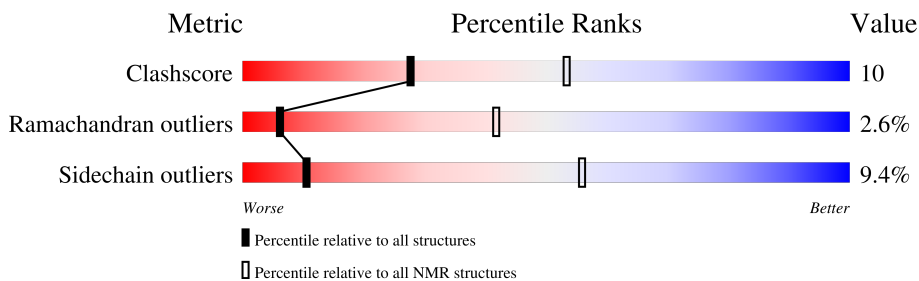
1 Overall quality at a glance

The following experimental techniques were used to determine the structure:

SOLUTION NMR

The overall completeness of chemical shifts assignment is 92%.

Percentile scores (ranging between 0-100) for global validation metrics of the entry are shown in the following graphic. The table shows the number of entries on which the scores are based.



Metric	Whole archive (#Entries)	NMR archive (#Entries)
Clashscore	229148	14424
Ramachandran outliers	224038	12848
Sidechain outliers	223484	12823

The table below summarises the geometric issues observed across the polymeric chains and their fit to the experimental data. The red, orange, yellow and green segments indicate the fraction of residues that contain outliers for ≥ 3 , 2, 1 and 0 types of geometric quality criteria. A cyan segment indicates the fraction of residues that are not part of the well-defined cores, and a grey segment represents the fraction of residues that are not modelled. The numeric value for each fraction is indicated below the corresponding segment, with a dot representing fractions $\leq 5\%$

Mol	Chain	Length	Quality of chain
1	A	161	

2 Ensemble composition and analysis

This entry contains 20 models. Model 12 is the overall representative, medoid model (most similar to other models). The authors have identified model 1 as representative.

The following residues are included in the computation of the global validation metrics.

Well-defined (core) protein residues			
Well-defined core	Residue range (total)	Backbone RMSD (Å)	Medoid model
1	A:11-A:100 (90)	1.43	12
2	A:106-A:130, A:137-A:153 (42)	0.73	18

Ill-defined regions of proteins are excluded from the global statistics.

Ligands and non-protein polymers are included in the analysis.

The models can be grouped into 5 clusters and 3 single-model clusters were found.

Cluster number	Models
1	8, 10, 12, 14, 15
2	1, 3, 4, 9, 17
3	2, 18, 19
4	6, 7
5	11, 16
Single-model clusters	5; 13; 20

3 Entry composition

There is only 1 type of molecule in this entry. The entry contains 2580 atoms, of which 1301 are hydrogens and 0 are deuteriums.

- Molecule 1 is a protein called CEREBRAL DOPAMINE NEUROTROPHIC FACTOR.

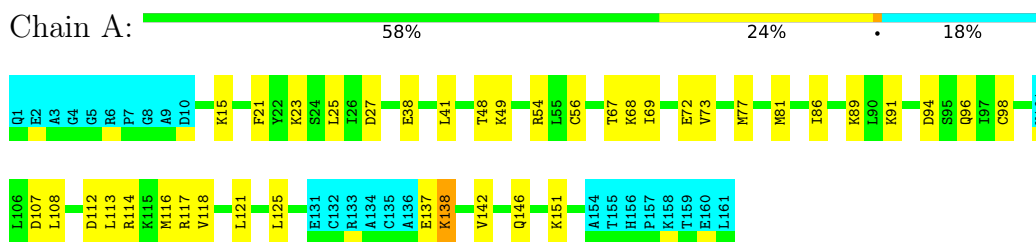
Mol	Chain	Residues	Atoms						Trace
			Total	C	H	N	O	S	
1	A	161	2580	806	1301	218	243	12	0

4 Residue-property plots [i](#)

4.1 Average score per residue in the NMR ensemble

These plots are provided for all protein, RNA, DNA and oligosaccharide chains in the entry. The first graphic is the same as shown in the summary in section 1 of this report. The second graphic shows the sequence where residues are colour-coded according to the number of geometric quality criteria for which they contain at least one outlier: green = 0, yellow = 1, orange = 2 and red = 3 or more. Stretches of 2 or more consecutive residues without any outliers are shown as green connectors. Residues which are classified as ill-defined in the NMR ensemble, are shown in cyan with an underline colour-coded according to the previous scheme. Residues which were present in the experimental sample, but not modelled in the final structure are shown in grey.

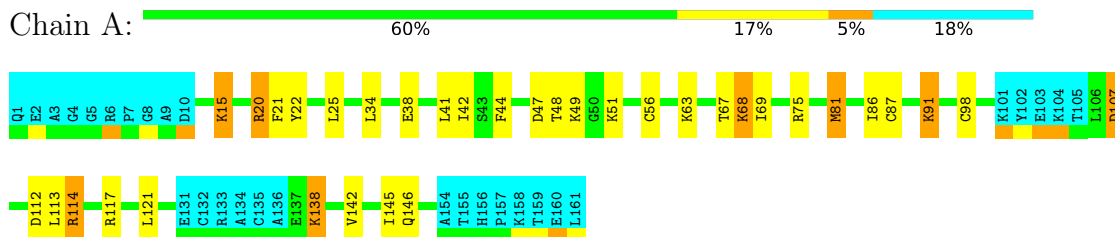
- Molecule 1: CEREBRAL DOPAMINE NEUROTROPHIC FACTOR



4.2 Residue scores for the representative (medoid) model from the NMR ensemble

The representative model is number 12. Colouring as in section 4.1 above.

- Molecule 1: CEREBRAL DOPAMINE NEUROTROPHIC FACTOR



5 Refinement protocol and experimental data overview

The models were refined using the following method: *CNS USING RECOORD SCRIPTS*.

Of the 100 calculated structures, 20 were deposited, based on the following criterion: *LOWEST ENERGY*.

The following table shows the software used for structure solution, optimisation and refinement.

Software name	Classification	Version
CNS	refinement	1.3
UNIO	structure solution	10
CNS	structure solution	1.3

The following table shows chemical shift validation statistics as aggregates over all chemical shift files. Detailed validation can be found in section 7 of this report.

Chemical shift file(s)	working_cs.cif
Number of chemical shift lists	1
Total number of shifts	2014
Number of shifts mapped to atoms	2014
Number of unparsed shifts	0
Number of shifts with mapping errors	0
Number of shifts with mapping warnings	0
Assignment completeness (well-defined parts)	92%

6 Model quality i

6.1 Standard geometry i

The Z score for a bond length (or angle) is the number of standard deviations the observed value is removed from the expected value. A bond length (or angle) with $|Z| > 5$ is considered an outlier worth inspection. RMSZ is the (average) root-mean-square of all Z scores of the bond lengths (or angles).

Mol	Chain	Bond lengths		Bond angles	
		RMSZ	#Z>5	RMSZ	#Z>5
1	A	1.24±0.08	4±3/1078 (0.3± 0.3%)	1.19±0.06	2±3/1448 (0.1± 0.2%)
All	All	1.24	75/21560 (0.3%)	1.19	39/28960 (0.1%)

Chiral center outliers are detected by calculating the chiral volume of a chiral center and verifying if the center is modelled as a planar moiety or with the opposite hand. A planarity outlier is detected by checking planarity of atoms in a peptide group, atoms in a mainchain group or atoms of a sidechain that are expected to be planar.

Mol	Chain	Chirality	Planarity
1	A	0.1±0.3	0.7±0.6
All	All	2	13

5 of 45 unique bond outliers are listed below. They are sorted according to the Z-score of the worst occurrence in the ensemble.

Mol	Chain	Res	Type	Atoms	Z	Observed(Å)	Ideal(Å)	Models	
								Worst	Total
1	A	91	LYS	CA-C	-11.38	1.37	1.52	2	2
1	A	30	VAL	C-N	-9.35	1.19	1.33	4	1
1	A	81	MET	N-CA	-9.13	1.33	1.46	3	1
1	A	91	LYS	C-O	-8.54	1.13	1.24	2	2
1	A	27	ASP	N-CA	-8.45	1.36	1.46	4	1

5 of 31 unique angle outliers are listed below. They are sorted according to the Z-score of the worst occurrence in the ensemble.

Mol	Chain	Res	Type	Atoms	Z	Observed(°)	Ideal(°)	Models	
								Worst	Total
1	A	95	SER	N-CA-C	7.39	126.53	110.80	5	1
1	A	94	ASP	CA-C-N	7.25	135.38	121.54	5	1
1	A	94	ASP	C-N-CA	7.25	135.38	121.54	5	1
1	A	32	PHE	CA-CB-CG	6.67	120.47	113.80	2	1
1	A	94	ASP	CA-C-O	6.56	124.92	120.19	5	1

All unique chiral outliers are listed below. They are sorted by the frequency of occurrence in the ensemble.

Mol	Chain	Res	Type	Atoms	Models (Total)
1	A	91	LYS	CA	1
1	A	95	SER	CA	1

All unique planar outliers are listed below. They are sorted by the frequency of occurrence in the ensemble.

Mol	Chain	Res	Type	Group	Models (Total)
1	A	114	ARG	Sidechain	5
1	A	28	ARG	Sidechain	4
1	A	20	ARG	Sidechain	3
1	A	75	ARG	Sidechain	1

6.2 Too-close contacts [i](#)

In the following table, the Non-H and H(model) columns list the number of non-hydrogen atoms and hydrogen atoms in each chain respectively. The H(added) column lists the number of hydrogen atoms added and optimized by MolProbity. The Clashes column lists the number of clashes averaged over the ensemble.

Mol	Chain	Non-H	H(model)	H(added)	Clashes
1	A	1062	1094	1094	21±9
All	All	21240	21880	21880	419

The all-atom clashscore is defined as the number of clashes found per 1000 atoms (including hydrogen atoms). The all-atom clashscore for this structure is 10.

5 of 254 unique clashes are listed below, sorted by their clash magnitude.

Atom-1	Atom-2	Clash(Å)	Distance(Å)	Models	
				Worst	Total
1:A:113:LEU:HA	1:A:116:MET:SD	0.81	2.16	10	6
1:A:76:PRO:HG2	1:A:81:MET:SD	0.78	2.18	3	1
1:A:55:LEU:HA	1:A:99:GLU:O	0.78	1.79	5	1
1:A:54:ARG:O	1:A:57:TYR:HB3	0.75	1.82	5	2
1:A:22:TYR:HB3	1:A:28:ARG:HA	0.73	1.60	4	1

6.3 Torsion angles [i](#)

6.3.1 Protein backbone [i](#)

In the following table, the Percentiles column shows the percent Ramachandran outliers of the chain as a percentile score with respect to all PDB entries followed by that with respect to all NMR entries. The Analysed column shows the number of residues for which the backbone conformation was analysed and the total number of residues.

Mol	Chain	Analysed	Favoured	Allowed	Outliers	Percentiles	
1	A	132/161 (82%)	117±5 (89±4%)	12±4 (9±3%)	3±2 (3±2%)	6	42
All	All	2640/3220 (82%)	2338 (89%)	234 (9%)	68 (3%)	6	42

5 of 28 unique Ramachandran outliers are listed below. They are sorted by the frequency of occurrence in the ensemble.

Mol	Chain	Res	Type	Models (Total)
1	A	69	ILE	9
1	A	15	LYS	7
1	A	68	LYS	6
1	A	73	VAL	6
1	A	108	LEU	5

6.3.2 Protein sidechains [i](#)

In the following table, the Percentiles column shows the percent sidechain outliers of the chain as a percentile score with respect to all PDB entries followed by that with respect to all NMR entries. The Analysed column shows the number of residues for which the sidechain conformation was analysed and the total number of residues.

Mol	Chain	Analysed	Rotameric	Outliers	Percentiles	
1	A	120/141 (85%)	109±3 (91±3%)	11±3 (9±3%)	10	56
All	All	2400/2820 (85%)	2175 (91%)	225 (9%)	10	56

5 of 59 unique residues with a non-rotameric sidechain are listed below. They are sorted by the frequency of occurrence in the ensemble.

Mol	Chain	Res	Type	Models (Total)
1	A	138	LYS	20
1	A	113	LEU	18
1	A	41	LEU	13
1	A	68	LYS	10
1	A	117	ARG	10

6.3.3 RNA [i](#)

There are no RNA molecules in this entry.

6.4 Non-standard residues in protein, DNA, RNA chains [i](#)

There are no non-standard protein/DNA/RNA residues in this entry.

6.5 Carbohydrates [i](#)

There are no oligosaccharides in this entry.

6.6 Ligand geometry [i](#)

There are no ligands in this entry.

6.7 Other polymers [i](#)

There are no such molecules in this entry.

6.8 Polymer linkage issues [i](#)

The following chains have linkage breaks:

Mol	Chain	Number of breaks
1	4-A	1

All chain breaks are listed below:

Model	Chain	Residue-1	Atom-1	Residue-2	Atom-2	Distance (Å)
4	A	30:VAL	C	31:ASN	N	1.19

7 Chemical shift validation [i](#)

The completeness of assignment taking into account all chemical shift lists is 92% for the well-defined parts and 91% for the entire structure.

7.1 Chemical shift list 1

File name: working_cs.cif

Chemical shift list name: *assigned_chem_shift_list*

7.1.1 Bookkeeping [i](#)

The following table shows the results of parsing the chemical shift list and reports the number of nuclei with statistically unusual chemical shifts.

Total number of shifts	2014
Number of shifts mapped to atoms	2014
Number of unparsed shifts	0
Number of shifts with mapping errors	0
Number of shifts with mapping warnings	0
Number of shift outliers (ShiftChecker)	0

7.1.2 Chemical shift referencing [i](#)

The following table shows the suggested chemical shift referencing corrections.

Nucleus	# values	Correction \pm precision, ppm	Suggested action
$^{13}\text{C}_\alpha$	159	-0.24 ± 0.09	None needed (< 0.5 ppm)
$^{13}\text{C}_\beta$	152	0.38 ± 0.05	None needed (< 0.5 ppm)
$^{13}\text{C}'$	136	-0.19 ± 0.05	None needed (< 0.5 ppm)
^{15}N	139	0.82 ± 0.32	Should be applied

7.1.3 Completeness of resonance assignments [i](#)

The following table shows the completeness of the chemical shift assignments for the well-defined regions of the structure. The overall completeness is 92%, i.e. 1712 atoms were assigned a chemical shift out of a possible 1867. 0 out of 25 assigned methyl groups (LEU and VAL) were assigned stereospecifically.

	Total	^1H	^{13}C	^{15}N
Backbone	617/658 (94%)	254/265 (96%)	246/264 (93%)	117/129 (91%)
Sidechain	1003/1098 (91%)	683/713 (96%)	312/345 (90%)	8/40 (20%)

Continued on next page...

Continued from previous page...

	Total	¹ H	¹³ C	¹⁵ N
Aromatic	92/111 (83%)	46/54 (85%)	45/54 (83%)	1/3 (33%)
Overall	1712/1867 (92%)	983/1032 (95%)	603/663 (91%)	126/172 (73%)

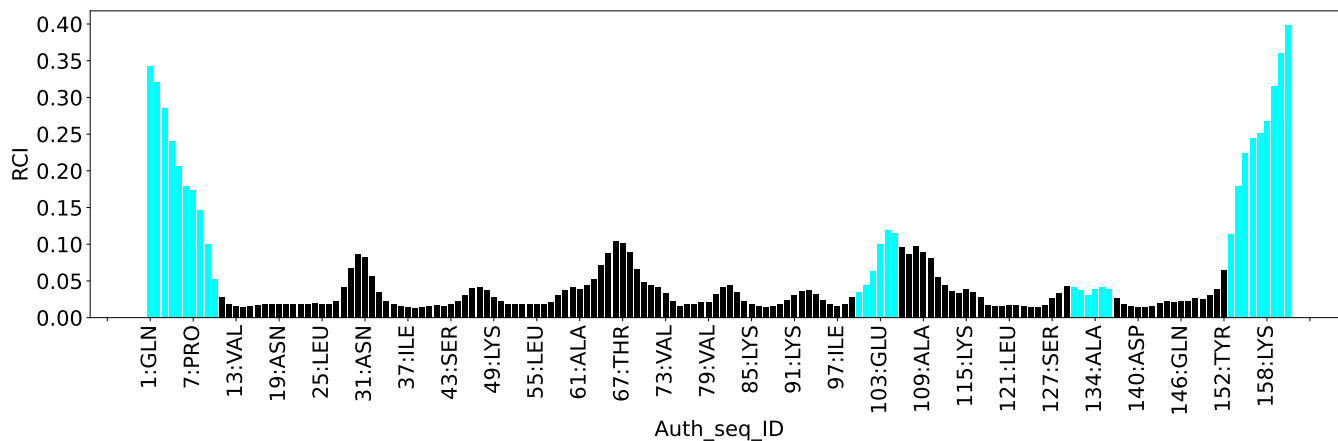
7.1.4 Statistically unusual chemical shifts [i](#)

There are no statistically unusual chemical shifts.

7.1.5 Random Coil Index (RCI) plots [i](#)

The image below reports *random coil index* values for the protein chains in the structure. The height of each bar gives a probability of a given residue to be disordered, as predicted from the available chemical shifts and the amino acid sequence. A value above 0.2 is an indication of significant predicted disorder. The colour of the bar shows whether the residue is in the well-defined core (black) or in the ill-defined residue ranges (cyan), as described in section 2 on ensemble composition. If well-defined core and ill-defined regions are not identified then it is shown as gray bars.

Random coil index (RCI) for chain A:



8 NMR restraints analysis

8.1 Conformationally restricting restraints

The following table provides the summary of experimentally observed NMR restraints in different categories. Restraints are classified into different categories based on the sequence separation of the atoms involved.

Description	Value
Total distance restraints	2017
Intra-residue ($ i-j =0$)	746
Sequential ($ i-j =1$)	551
Medium range ($ i-j >1$ and $ i-j <5$)	387
Long range ($ i-j \geq 5$)	333
Inter-chain	0
Hydrogen bond restraints	0
Disulfide bond restraints	0
Total dihedral-angle restraints	160
Number of unmapped restraints	0
Number of restraints per residue	13.5
Number of long range restraints per residue ¹	2.1

¹Long range hydrogen bonds and disulfide bonds are counted as long range restraints while calculating the number of long range restraints per residue

8.2 Residual restraint violations

This section provides the overview of the restraint violations analysis. The violations are binned as small, medium and large violations based on its absolute value. Average number of violations per model is calculated by dividing the total number of violations in each bin by the size of the ensemble.

8.2.1 Average number of distance violations per model

Distance violations less than 0.1 Å are not included in the calculation.

Bins (Å)	Average number of violations per model	Max (Å)
0.1-0.2 (Small)	65.5	0.2
0.2-0.5 (Medium)	113.8	0.5
>0.5 (Large)	164.7	5.75

8.2.2 Average number of dihedral-angle violations per model [i](#)

Dihedral-angle violations less than 1° are not included in the calculation.

Bins (°)	Average number of violations per model	Max (°)
1.0-10.0 (Small)	4.4	9.96
10.0-20.0 (Medium)	1.2	18.86
>20.0 (Large)	0.1	30.82

9 Distance violation analysis i

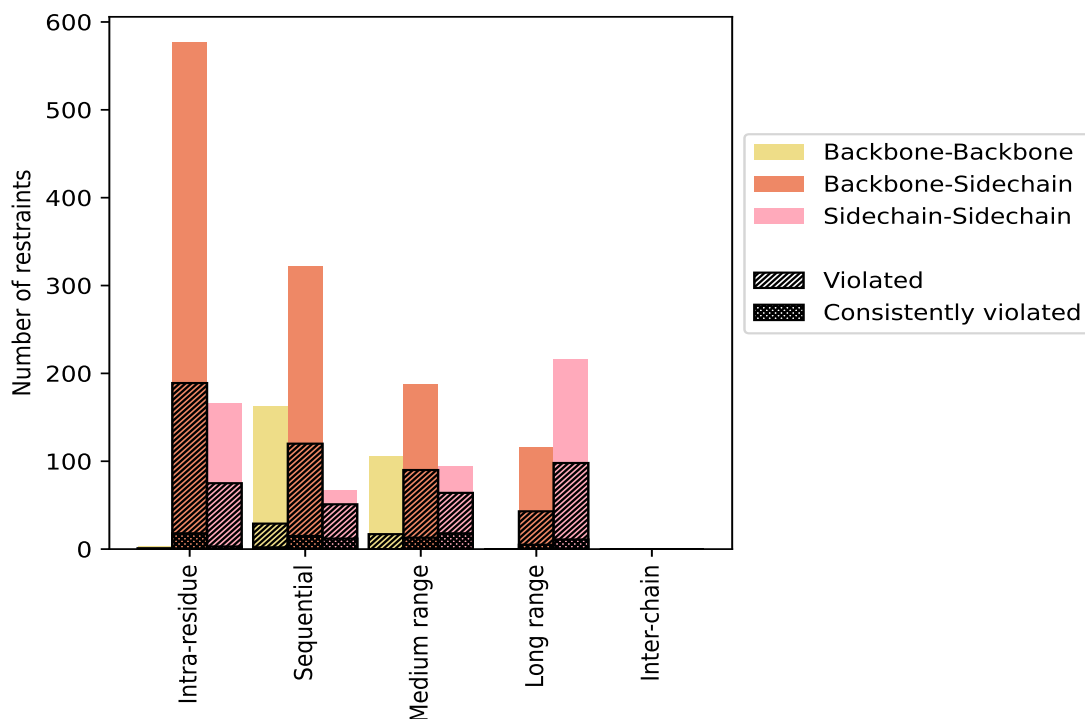
9.1 Summary of distance violations i

The following table shows the summary of distance violations in different restraint categories based on the sequence separation of the atoms involved. Each category is further sub-divided into three sub-categories based on the atoms involved. Violations less than 0.1 Å are not included in the statistics.

Restrains type	Count	% ¹	Violated ³			Consistently Violated ⁴		
			Count	% ²	% ¹	Count	% ²	% ¹
Intra-residue ($i-j =0$)	746	37.0	265	35.5	13.1	21	2.8	1.0
Backbone-Backbone	3	0.1	1	33.3	0.0	0	0.0	0.0
Backbone-Sidechain	577	28.6	189	32.8	9.4	18	3.1	0.9
Sidechain-Sidechain	166	8.2	75	45.2	3.7	3	1.8	0.1
Sequential ($i-j =1$)	551	27.3	200	36.3	9.9	29	5.3	1.4
Backbone-Backbone	162	8.0	29	17.9	1.4	2	1.2	0.1
Backbone-Sidechain	322	16.0	120	37.3	5.9	15	4.7	0.7
Sidechain-Sidechain	67	3.3	51	76.1	2.5	12	17.9	0.6
Medium range ($i-j >1$ & $i-j <5$)	387	19.2	171	44.2	8.5	31	8.0	1.5
Backbone-Backbone	105	5.2	17	16.2	0.8	0	0.0	0.0
Backbone-Sidechain	188	9.3	90	47.9	4.5	13	6.9	0.6
Sidechain-Sidechain	94	4.7	64	68.1	3.2	18	19.1	0.9
Long range ($i-j \geq 5$)	333	16.5	141	42.3	7.0	16	4.8	0.8
Backbone-Backbone	1	0.0	0	0.0	0.0	0	0.0	0.0
Backbone-Sidechain	116	5.8	43	37.1	2.1	5	4.3	0.2
Sidechain-Sidechain	216	10.7	98	45.4	4.9	11	5.1	0.5
Inter-chain	0	0.0	0	0.0	0.0	0	0.0	0.0
Backbone-Backbone	0	0.0	0	0.0	0.0	0	0.0	0.0
Backbone-Sidechain	0	0.0	0	0.0	0.0	0	0.0	0.0
Sidechain-Sidechain	0	0.0	0	0.0	0.0	0	0.0	0.0
Hydrogen bond	0	0.0	0	0.0	0.0	0	0.0	0.0
Disulfide bond	0	0.0	0	0.0	0.0	0	0.0	0.0
Total	2017	100.0	777	38.5	38.5	97	4.8	4.8
Backbone-Backbone	271	13.4	47	17.3	2.3	2	0.7	0.1
Backbone-Sidechain	1203	59.6	442	36.7	21.9	51	4.2	2.5
Sidechain-Sidechain	543	26.9	288	53.0	14.3	44	8.1	2.2

¹ percentage calculated with respect to the total number of distance restraints, ² percentage calculated with respect to the number of restraints in a particular restraint category, ³ violated in at least one model, ⁴ violated in all the models

9.1.1 Bar chart : Distribution of distance restraints and violations [i](#)



Violated and consistently violated restraints are shown using different hatch patterns in their respective categories. The hydrogen bonds and disulfid bonds are counted in their appropriate category on the x-axis

9.2 Distance violation statistics for each model [i](#)

The following table provides the distance violation statistics for each model in the ensemble. Violations less than 0.1 Å are not included in the statistics.

Model ID	Number of violations						Mean (Å)	Max (Å)	SD ⁶ (Å)	Median (Å)
	IR ¹	SQ ²	MR ³	LR ⁴	IC ⁵	Total				
1	102	104	89	57	0	352	0.7	3.18	0.62	0.47
2	100	98	89	56	0	343	0.69	3.23	0.61	0.48
3	109	98	93	74	0	374	0.77	5.75	0.79	0.47
4	109	103	102	62	0	376	0.68	4.67	0.65	0.44
5	107	104	99	62	0	372	0.72	5.04	0.65	0.46
6	102	104	78	54	0	338	0.65	3.05	0.54	0.48
7	111	95	86	56	0	348	0.68	3.33	0.6	0.48
8	102	90	81	53	0	326	0.68	3.2	0.56	0.48
9	106	97	88	60	0	351	0.71	3.28	0.59	0.53
10	116	101	92	51	0	360	0.67	3.56	0.62	0.45

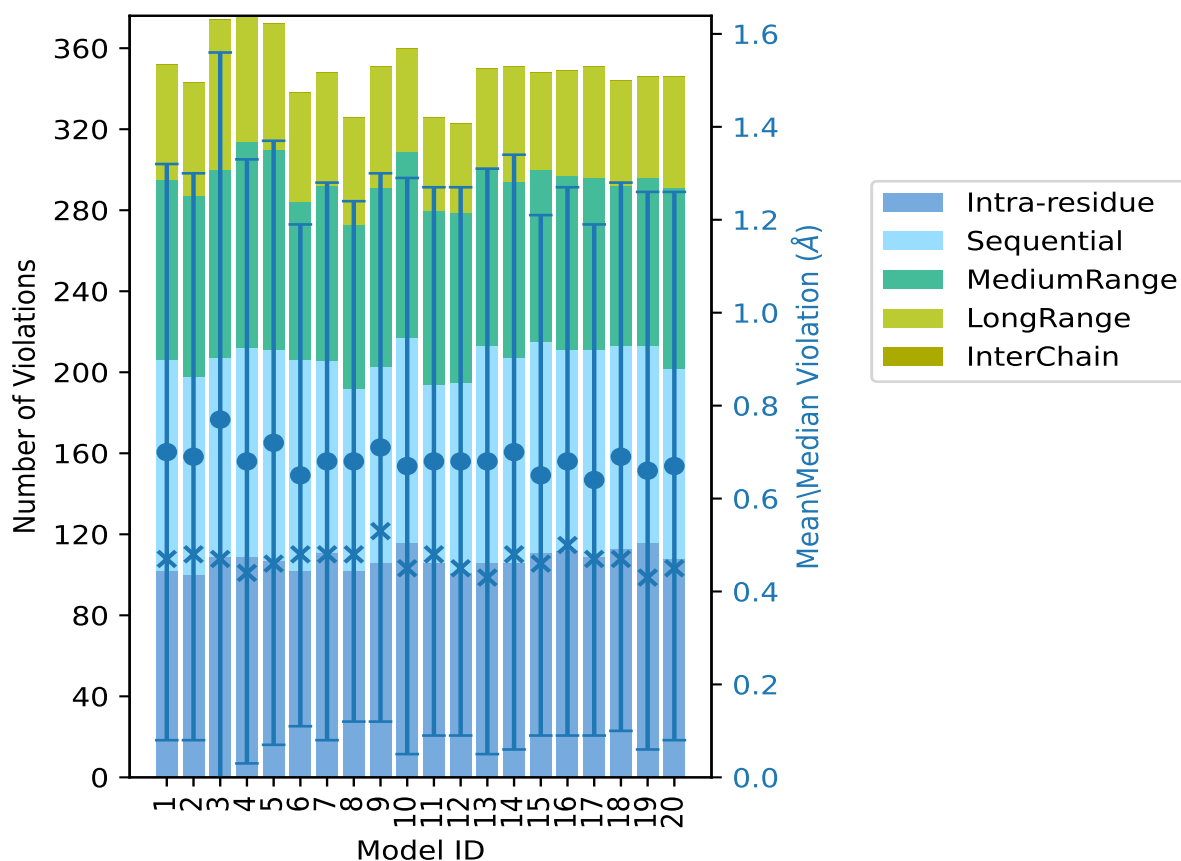
Continued on next page...

Continued from previous page...

Model ID	Number of violations					Total	Mean (Å)	Max (Å)	SD ⁶ (Å)	Median (Å)
	IR ¹	SQ ²	MR ³	LR ⁴	IC ⁵					
11	106	88	86	46	0	326	0.68	3.09	0.59	0.48
12	101	94	84	44	0	323	0.68	3.18	0.59	0.45
13	106	107	88	49	0	350	0.68	3.56	0.63	0.43
14	106	101	87	57	0	351	0.7	3.67	0.64	0.48
15	111	104	85	48	0	348	0.65	3.11	0.56	0.46
16	112	99	86	52	0	349	0.68	3.17	0.59	0.5
17	109	102	85	55	0	351	0.64	3.42	0.55	0.47
18	113	100	79	52	0	344	0.69	3.0	0.59	0.47
19	116	97	83	50	0	346	0.66	3.35	0.6	0.43
20	108	94	89	55	0	346	0.67	3.63	0.59	0.45

¹Intra-residue restraints, ²Sequential restraints, ³Medium range restraints, ⁴Long range restraints, ⁵Inter-chain restraints, ⁶Standard deviation

9.2.1 Bar graph : Distance Violation statistics for each model [\(i\)](#)



The mean(dot),median(x) and the standard deviation are shown in blue with respect to the y axis on the right

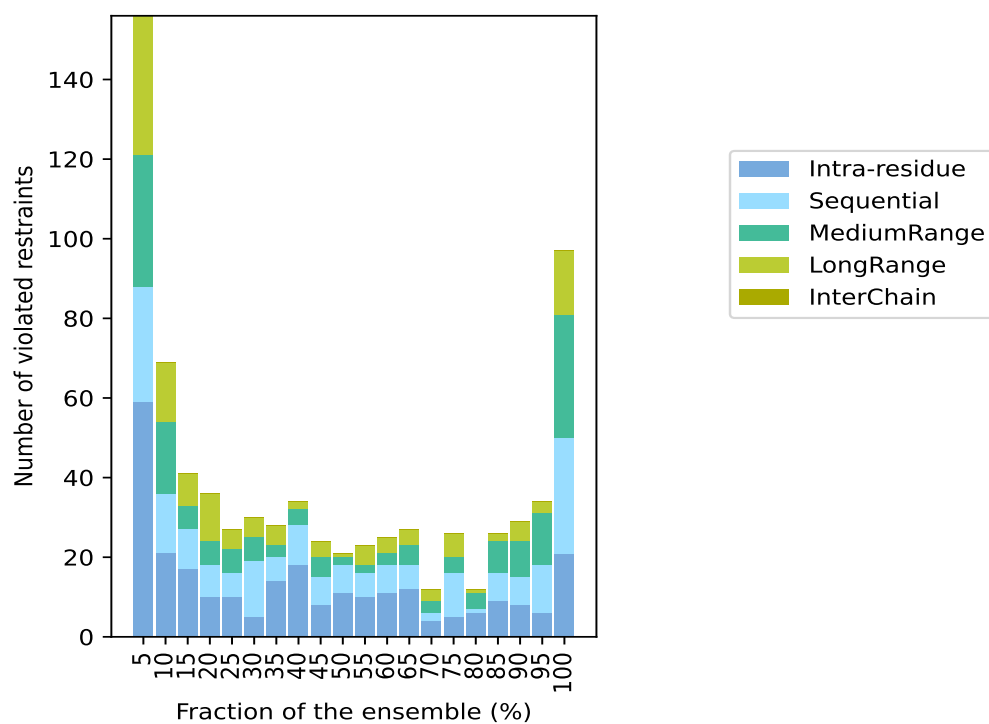
9.3 Distance violation statistics for the ensemble

Violation analysis may find that some restraints are violated in few models and some are violated in most of models. The following table provides this information as number of violated restraints for a given fraction of the ensemble. In total, 1240(IR:481, SQ:351, MR:216, LR:192, IC:0) restraints are not violated in the ensemble.

Number of violated restraints						Fraction of the ensemble	
IR ¹	SQ ²	MR ³	LR ⁴	IC ⁵	Total	Count ⁶	%
59	29	33	35	0	156	1	5.0
21	15	18	15	0	69	2	10.0
17	10	6	8	0	41	3	15.0
10	8	6	12	0	36	4	20.0
10	6	6	5	0	27	5	25.0
5	14	6	5	0	30	6	30.0
14	6	3	5	0	28	7	35.0
18	10	4	2	0	34	8	40.0
8	7	5	4	0	24	9	45.0
11	7	2	1	0	21	10	50.0
10	6	2	5	0	23	11	55.0
11	7	3	4	0	25	12	60.0
12	6	5	4	0	27	13	65.0
4	2	3	3	0	12	14	70.0
5	11	4	6	0	26	15	75.0
6	1	4	1	0	12	16	80.0
9	7	8	2	0	26	17	85.0
8	7	9	5	0	29	18	90.0
6	12	13	3	0	34	19	95.0
21	29	31	16	0	97	20	100.0

¹Intra-residue restraints, ²Sequential restraints, ³Medium range restraints, ⁴Long range restraints, ⁵Inter-chain restraints, ⁶ Number of models with violations

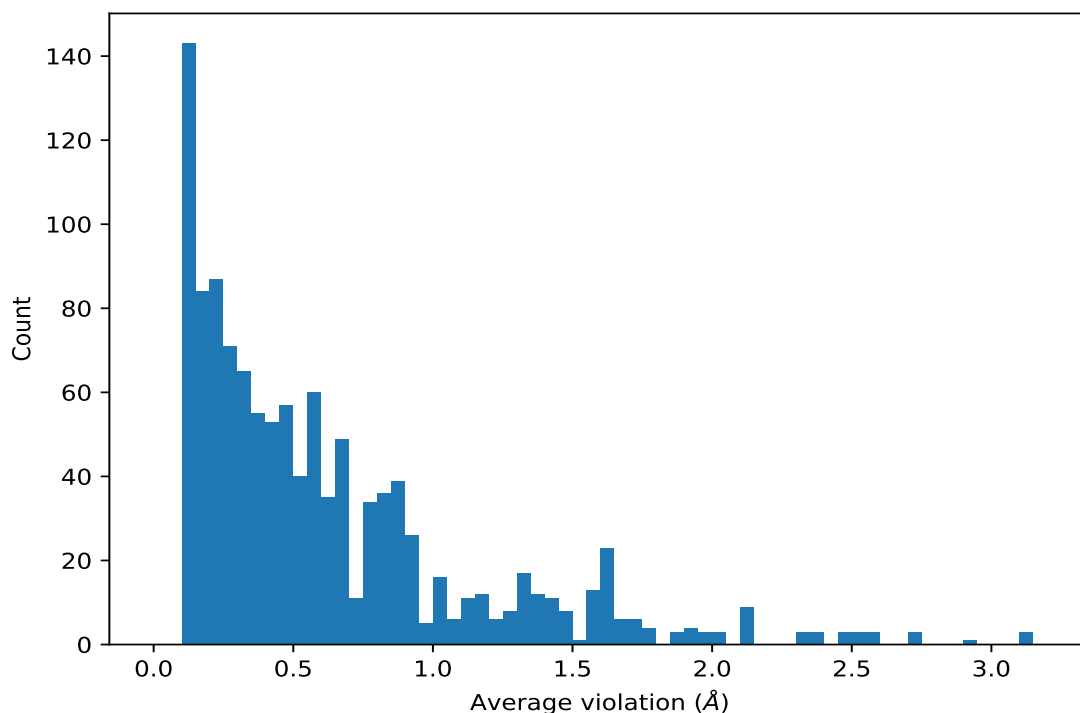
9.3.1 Bar graph : Distance violation statistics for the ensemble [i](#)



9.4 Most violated distance restraints in the ensemble [i](#)

9.4.1 Histogram : Distribution of mean distance violations [i](#)

The following histogram shows the distribution of the average value of the violation. The average is calculated for each restraint that is violated in more than one model over all the violated models in the ensemble



9.4.2 Table: Most violated distance restraints [i](#)

The following table provides the mean and the standard deviation of the violations for the 10 worst performing restraints, sorted by number of violated models and the mean violation value. The Key (restraint list ID, restraint ID) is the unique identifier for a given restraint. Rows with same key represent combinatorial or ambiguous restraints and are counted as a single restraint.

Key	Atom-1	Atom-2	Models ¹	Mean (Å)	SD ¹ (Å)	Median (Å)
(1,851)	1:122:A:LYS:HD3	1:118:A:VAL:HG11	20	3.11	0.29	3.14
(1,851)	1:122:A:LYS:HD3	1:118:A:VAL:HG12	20	3.11	0.29	3.14
(1,851)	1:122:A:LYS:HD3	1:118:A:VAL:HG13	20	3.11	0.29	3.14
(1,75)	1:107:A:ASP:HB3	1:111:A:VAL:HG21	20	2.73	0.54	2.9
(1,75)	1:107:A:ASP:HB3	1:111:A:VAL:HG22	20	2.73	0.54	2.9
(1,75)	1:107:A:ASP:HB3	1:111:A:VAL:HG23	20	2.73	0.54	2.9
(1,52)	1:118:A:VAL:HG21	1:138:A:LYS:HE2	20	2.57	0.86	2.87
(1,52)	1:118:A:VAL:HG22	1:138:A:LYS:HE2	20	2.57	0.86	2.87
(1,52)	1:118:A:VAL:HG23	1:138:A:LYS:HE2	20	2.57	0.86	2.87
(1,845)	1:118:A:VAL:HG11	1:122:A:LYS:HG2	20	2.55	0.25	2.51
(1,845)	1:118:A:VAL:HG12	1:122:A:LYS:HG2	20	2.55	0.25	2.51
(1,845)	1:118:A:VAL:HG13	1:122:A:LYS:HG2	20	2.55	0.25	2.51
(1,53)	1:138:A:LYS:HE3	1:118:A:VAL:HG21	20	2.47	0.4	2.5
(1,53)	1:138:A:LYS:HE3	1:118:A:VAL:HG22	20	2.47	0.4	2.5
(1,53)	1:138:A:LYS:HE3	1:118:A:VAL:HG23	20	2.47	0.4	2.5
(1,858)	1:111:A:VAL:HG21	1:107:A:ASP:HA	20	2.39	0.38	2.5

Continued on next page...

Continued from previous page...

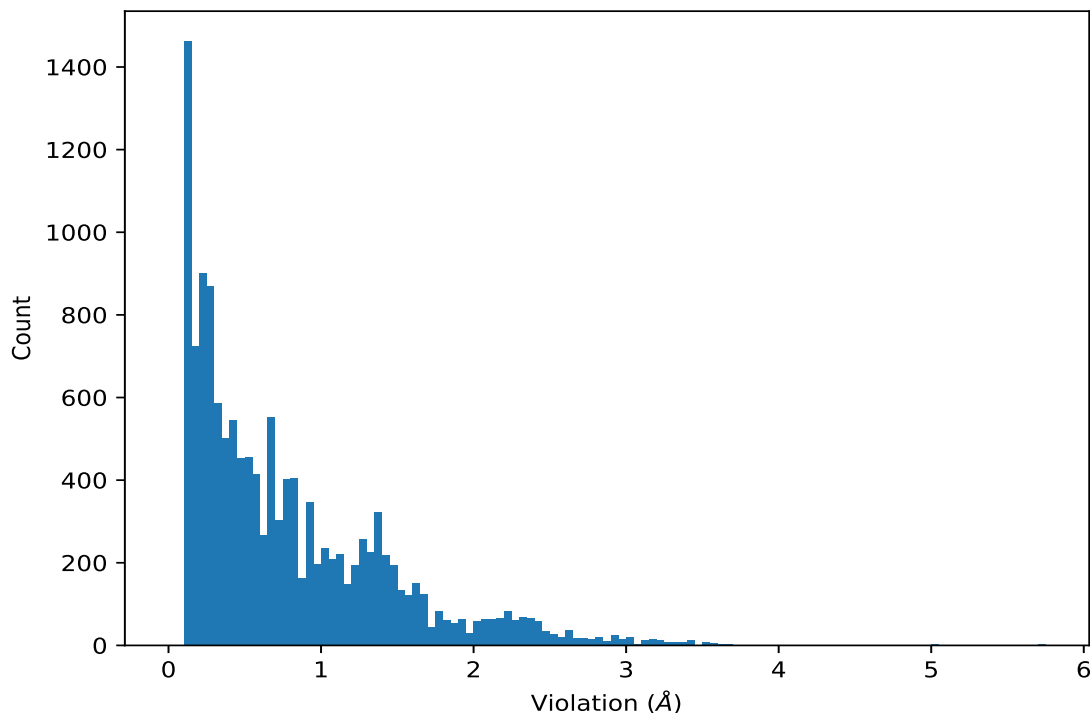
Key	Atom-1	Atom-2	Models ¹	Mean (Å)	SD ¹ (Å)	Median (Å)
(1,858)	1:111:A:VAL:HG22	1:107:A:ASP:HA	20	2.39	0.38	2.5
(1,858)	1:111:A:VAL:HG23	1:107:A:ASP:HA	20	2.39	0.38	2.5
(1,947)	1:79:A:VAL:HG21	1:76:A:PRO:HB3	20	2.32	0.33	2.34
(1,947)	1:79:A:VAL:HG22	1:76:A:PRO:HB3	20	2.32	0.33	2.34
(1,947)	1:79:A:VAL:HG23	1:76:A:PRO:HB3	20	2.32	0.33	2.34
(1,850)	1:118:A:VAL:HG11	1:122:A:LYS:HD2	20	2.14	0.36	2.17
(1,850)	1:118:A:VAL:HG12	1:122:A:LYS:HD2	20	2.14	0.36	2.17
(1,850)	1:118:A:VAL:HG13	1:122:A:LYS:HD2	20	2.14	0.36	2.17
(1,772)	1:31:A:ASN:HB2	1:30:A:VAL:HG21	20	1.97	0.36	2.02
(1,772)	1:31:A:ASN:HB2	1:30:A:VAL:HG22	20	1.97	0.36	2.02
(1,772)	1:31:A:ASN:HB2	1:30:A:VAL:HG23	20	1.97	0.36	2.02
(1,549)	1:34:A:LEU:HB3	1:33:A:SER:HB3	20	1.95	0.41	1.96

¹Number of violated models, ²Standard deviation

9.5 All violated distance restraints [\(i\)](#)

9.5.1 Histogram : Distribution of distance violations [\(i\)](#)

The following histogram shows the distribution of the absolute value of the violation for all violated restraints in the ensemble.



9.5.2 Table : All distance violations [i](#)

The following table provides the 10 worst performing restraints, sorted by the violation value. The Key (restraint list ID, restraint ID) is the unique identifier for a given restraint. Rows with same key represent combinatorial or ambiguous restraints and are counted as a single restraint.

Key	Atom-1	Atom-2	Model ID	Violation (Å)
(1,445)	1:90:A:LEU:HD11	1:73:A:VAL:H	3	5.75
(1,445)	1:90:A:LEU:HD12	1:73:A:VAL:H	3	5.75
(1,445)	1:90:A:LEU:HD13	1:73:A:VAL:H	3	5.75
(1,244)	1:85:A:LYS:HB3	1:81:A:MET:HG2	3	5.31
(1,1163)	1:13:A:VAL:HG11	1:101:A:LYS:HA	5	5.04
(1,1163)	1:13:A:VAL:HG12	1:101:A:LYS:HA	5	5.04
(1,1163)	1:13:A:VAL:HG13	1:101:A:LYS:HA	5	5.04
(1,809)	1:27:A:ASP:HB2	1:24:A:SER:HA	4	4.67
(1,245)	1:81:A:MET:HG3	1:85:A:LYS:HB3	3	4.56
(1,846)	1:122:A:LYS:HG3	1:118:A:VAL:HG11	14	3.67
(1,846)	1:122:A:LYS:HG3	1:118:A:VAL:HG12	14	3.67
(1,846)	1:122:A:LYS:HG3	1:118:A:VAL:HG13	14	3.67
(1,851)	1:122:A:LYS:HD3	1:118:A:VAL:HG11	20	3.63
(1,851)	1:122:A:LYS:HD3	1:118:A:VAL:HG12	20	3.63
(1,851)	1:122:A:LYS:HD3	1:118:A:VAL:HG13	20	3.63
(1,75)	1:107:A:ASP:HB3	1:111:A:VAL:HG21	10	3.56
(1,75)	1:107:A:ASP:HB3	1:111:A:VAL:HG22	10	3.56
(1,75)	1:107:A:ASP:HB3	1:111:A:VAL:HG23	10	3.56
(1,75)	1:107:A:ASP:HB3	1:111:A:VAL:HG21	13	3.56
(1,75)	1:107:A:ASP:HB3	1:111:A:VAL:HG22	13	3.56
(1,75)	1:107:A:ASP:HB3	1:111:A:VAL:HG23	13	3.56
(1,851)	1:122:A:LYS:HD3	1:118:A:VAL:HG11	13	3.52

10 Dihedral-angle violation analysis [i](#)

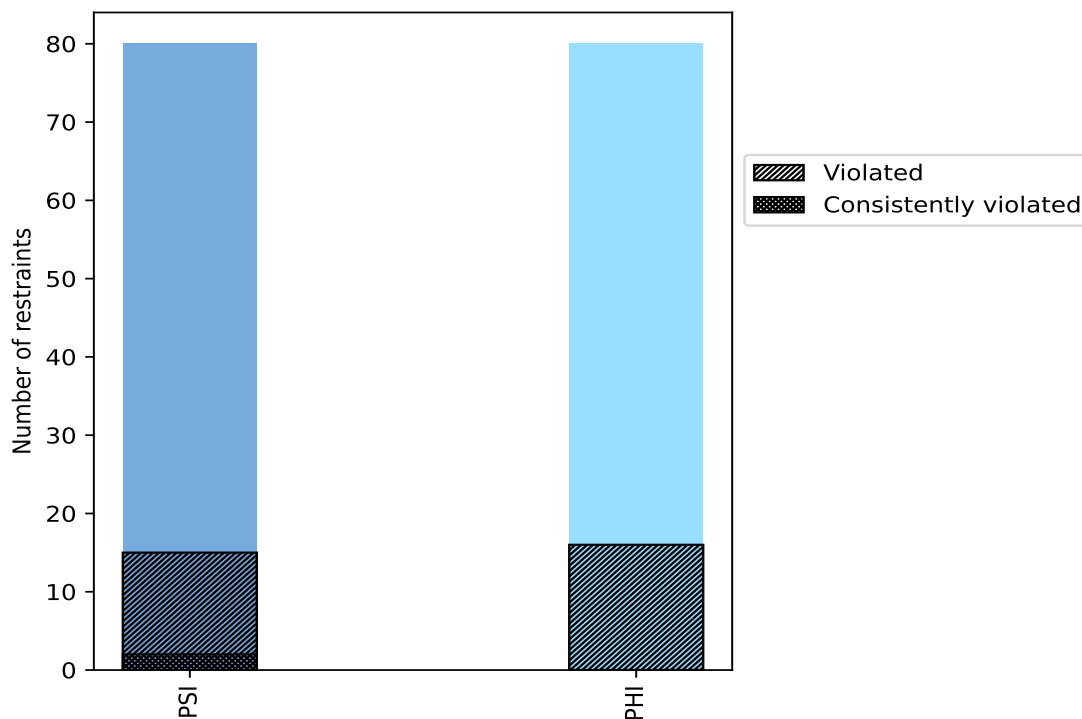
10.1 Summary of dihedral-angle violations [i](#)

The following table provides the summary of dihedral-angle violations in different dihedral-angle types. Violations less than 1° are not included in the calculation.

Angle type	Count	% ¹	Violated ³			Consistently Violated ⁴		
			Count	% ²	% ¹	Count	% ²	% ¹
PSI	80	50.0	15	18.8	9.4	2	2.5	1.2
PHI	80	50.0	16	20.0	10.0	0	0.0	0.0
Total	160	100.0	31	19.4	19.4	2	1.2	1.2

¹ percentage calculated with respect to total number of dihedral-angle restraints, ² percentage calculated with respect to number of restraints in a particular dihedral-angle type, ³ violated in at least one model, ⁴ violated in all the models

10.1.1 Bar chart : Distribution of dihedral-angles and violations [i](#)



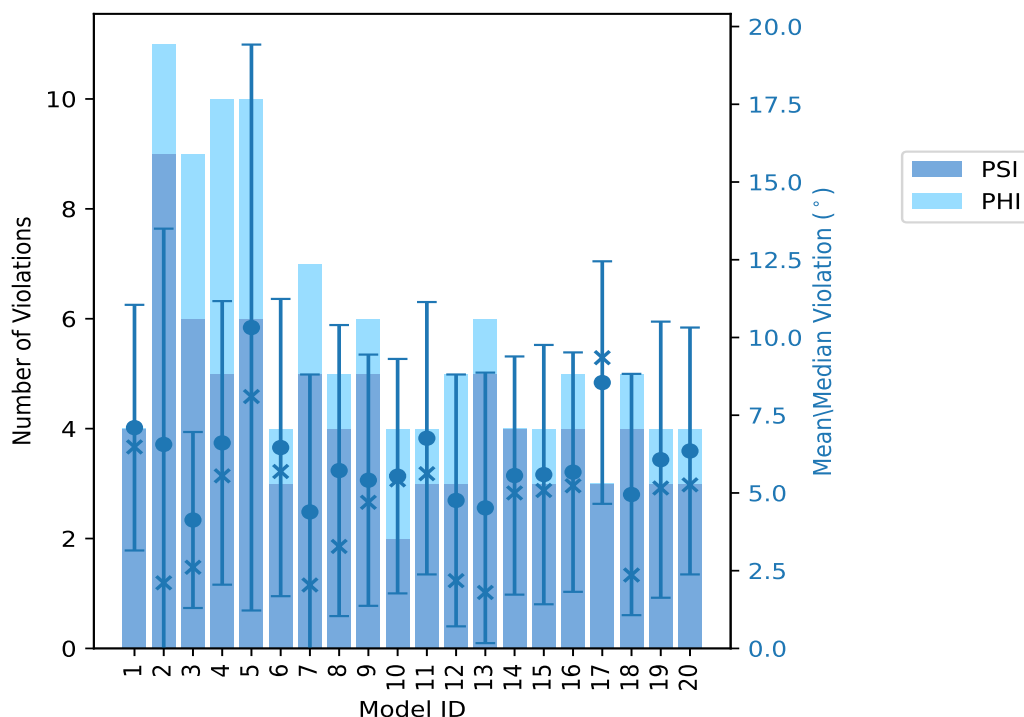
Violated and consistently violated restraints are shown using different hatch patterns in their respective categories

10.2 Dihedral-angle violation statistics for each model [i](#)

The following table provides the dihedral-angle violation statistics for each model in the ensemble. Violations less than 1° are not included in the statistics.

Model ID	Number of violations			Mean (°)	Max (°)	SD (°)	Median (°)
	PSI	PHI	Total				
1	4	0	4	7.1	12.79	3.95	6.48
2	9	2	11	6.56	20.04	6.94	2.11
3	6	3	9	4.13	9.2	2.83	2.61
4	5	5	10	6.61	13.89	4.56	5.55
5	6	4	10	10.32	30.82	9.1	8.1
6	3	1	4	6.46	13.35	4.78	5.69
7	5	2	7	4.39	13.47	4.42	2.04
8	4	1	5	5.72	12.44	4.68	3.28
9	5	1	6	5.41	11.95	4.04	4.7
10	2	2	4	5.54	9.96	3.77	5.42
11	3	1	4	6.76	13.12	4.38	5.62
12	3	2	5	4.76	11.27	4.05	2.18
13	5	1	6	4.52	12.24	4.35	1.8
14	4	0	4	5.56	10.91	3.83	5.0
15	3	1	4	5.59	10.95	4.17	5.08
16	4	1	5	5.67	10.81	3.85	5.23
17	3	0	3	8.55	12.87	3.9	9.35
18	4	1	5	4.95	11.41	3.88	2.36
19	3	1	4	6.07	12.8	4.44	5.16
20	3	1	4	6.35	12.41	3.97	5.26

10.2.1 Bar graph : Dihedral violation statistics for each model [i](#)



The mean(dot),median(x) and the standard deviation are shown in blue with respect to the y axis on the right

10.3 Dihedral-angle violation statistics for the ensemble [i](#)

Violation analysis may find that some restraints are violated in very few models and some are violated in most of models. The following table provides this information as number of violated restraints for a given fraction of ensemble.

Number of violated restraints			Fraction of the ensemble	
PSI	PHI	Total	Count ¹	%
5	11	16	1	5.0
3	2	5	2	10.0
1	0	1	3	15.0
1	1	2	4	20.0
2	1	3	5	25.0
0	1	1	6	30.0
0	0	0	7	35.0
0	0	0	8	40.0
0	0	0	9	45.0
0	0	0	10	50.0
0	0	0	11	55.0

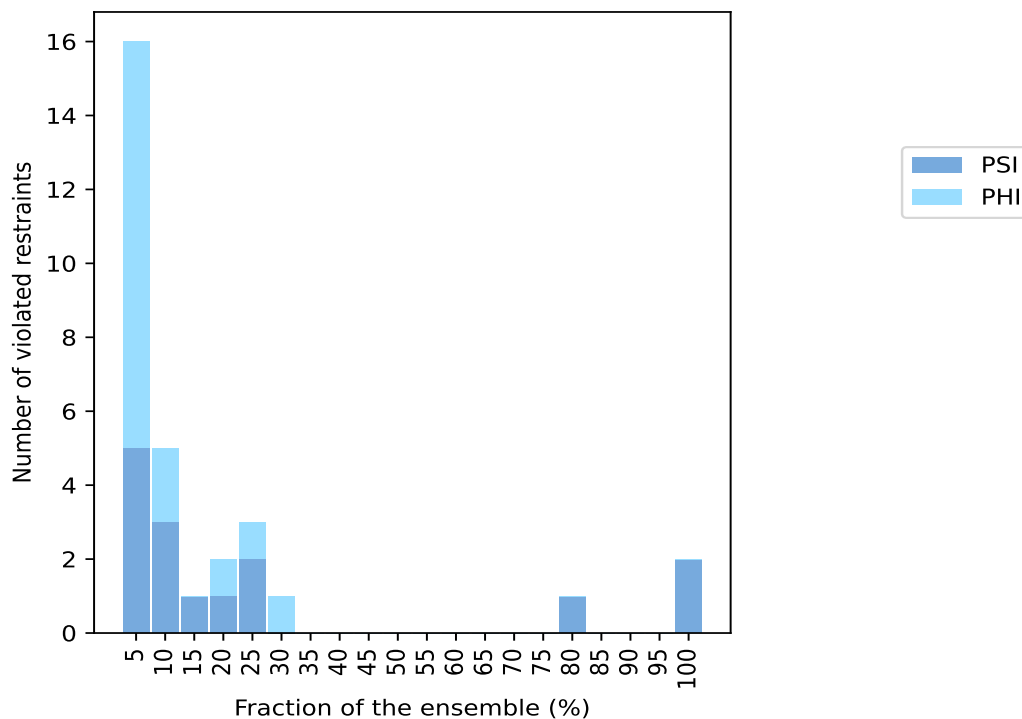
Continued on next page...

Continued from previous page...

Number of violated restraints			Fraction of the ensemble	
PSI	PHI	Total	Count ¹	%
0	0	0	12	60.0
0	0	0	13	65.0
0	0	0	14	70.0
0	0	0	15	75.0
1	0	1	16	80.0
0	0	0	17	85.0
0	0	0	18	90.0
0	0	0	19	95.0
2	0	2	20	100.0

¹ Number of models with violations

10.3.1 Bar graph : Dihedral-angle Violation statistics for the ensemble [i](#)

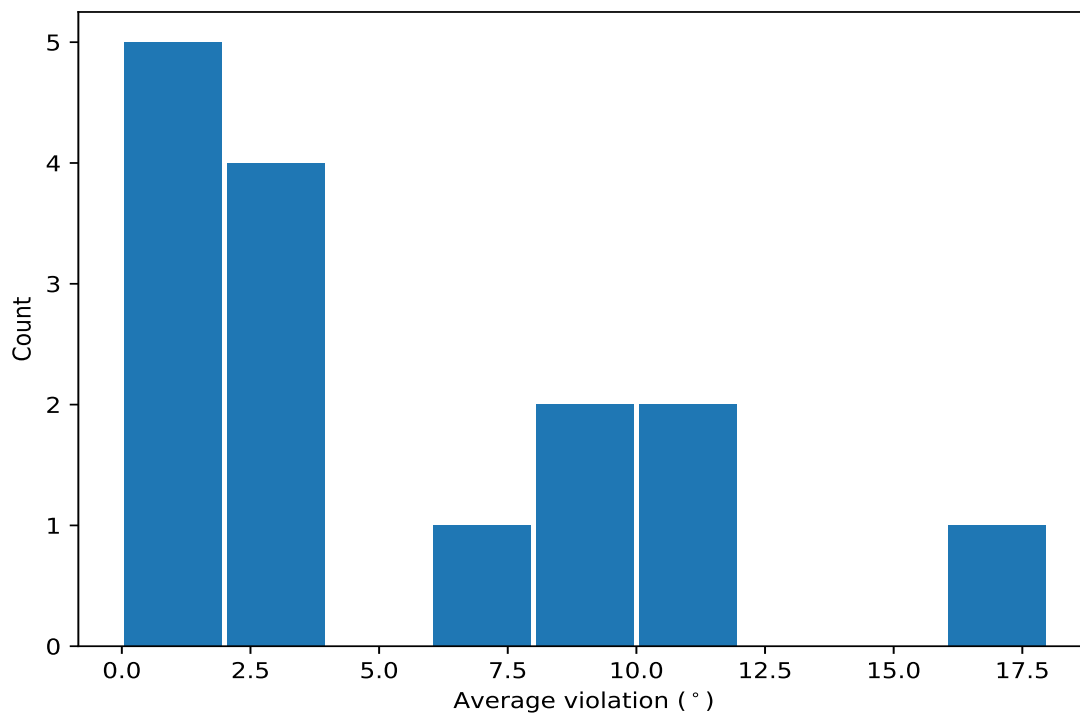


10.4 Most violated dihedral-angle restraints in the ensemble [i](#)

10.4.1 Histogram : Distribution of mean dihedral-angle violations [i](#)

The following histogram shows the distribution of the average value of the violation. The average is calculated for each restraint that is violated in more than one model over all the violated models

in the ensemble



10.4.2 Table: Most violated dihedral-angle restraints [i](#)

The following table provides the mean and the standard deviation of the violations for the 10 worst performing restraints, sorted by number of violated models and the mean violation value. The Key (restraint list ID, restraint ID) is the unique identifier for a given restraint.

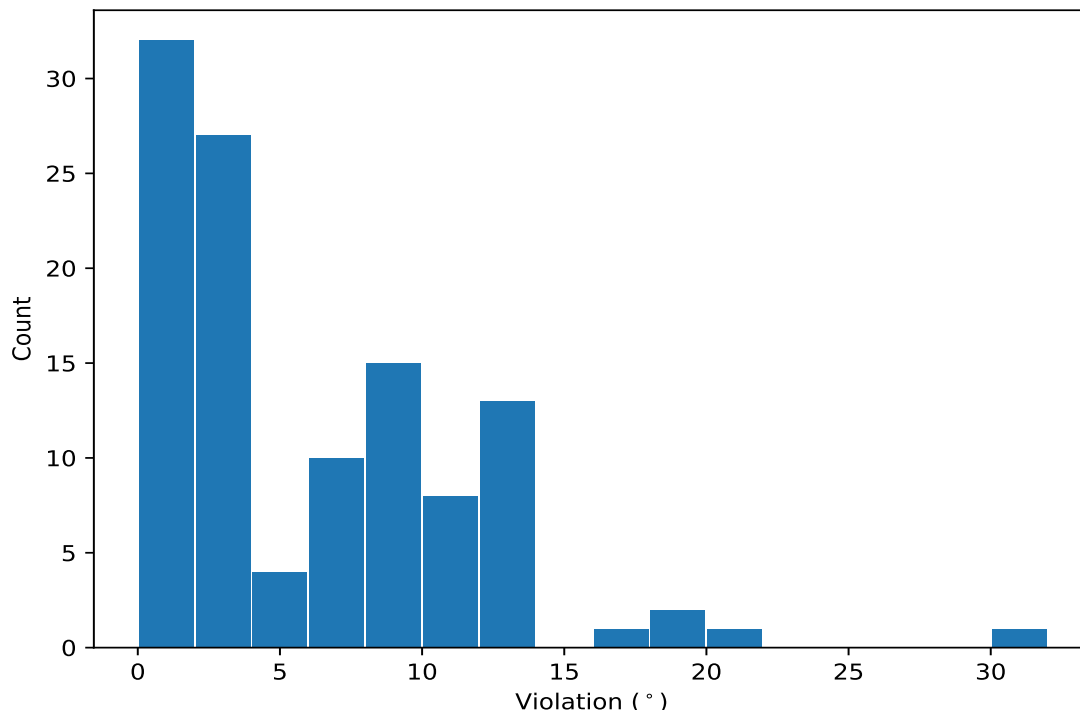
Key	Atom-1	Atom-2	Atom-3	Atom-4	Models ¹	Mean	SD ²	Median
(1,38)	1:81:A:MET:N	1:81:A:MET:CA	1:81:A:MET:C	1:82:A:PRO:N	20	11.91	1.17	12.12
(1,120)	1:128:A:TRP:N	1:128:A:TRP:CA	1:128:A:TRP:C	1:129:A:GLY:N	20	8.3	0.74	8.35
(1,14)	1:79:A:VAL:N	1:79:A:VAL:CA	1:79:A:VAL:C	1:80:A:HIS:N	16	2.82	1.06	2.6
(1,21)	1:101:A:LYS:C	1:102:A:TYR:N	1:102:A:TYR:CA	1:102:A:TYR:C	6	1.6	0.42	1.68
(1,102)	1:71:A:SER:N	1:71:A:SER:CA	1:71:A:SER:C	1:72:A:GLU:N	5	2.27	0.95	1.9
(1,22)	1:102:A:TYR:N	1:102:A:TYR:CA	1:102:A:TYR:C	1:103:A:GLU:N	5	2.02	1.15	1.62
(1,101)	1:70:A:LEU:C	1:71:A:SER:N	1:71:A:SER:CA	1:71:A:SER:C	5	1.84	0.63	1.68
(1,82)	1:84:A:MET:N	1:84:A:MET:CA	1:84:A:MET:C	1:85:A:LYS:N	4	2.05	0.21	2.09
(1,105)	1:69:A:ILE:C	1:70:A:LEU:N	1:70:A:LEU:CA	1:70:A:LEU:C	4	1.43	0.26	1.37
(1,32)	1:90:A:LEU:N	1:90:A:LEU:CA	1:90:A:LEU:C	1:91:A:LYS:N	3	11.6	7.02	13.84

¹ Number of violated models, ²Standard deviation, All angle values are in degree (°)

10.5 All violated dihedral-angle restraints [i](#)

10.5.1 Histogram : Distribution of violations [i](#)

The following histogram shows the distribution of the absolute value of the violation for all violated restraints in the ensemble.



10.5.2 Table: All violated dihedral-angle restraints [i](#)

The following table provides the list of violations for the 10 worst performing restraints, sorted by the violation value. The Key (restraint list ID, restraint ID) is the unique identifier for a given restraint.

Key	Atom-1	Atom-2	Atom-3	Atom-4	Model ID	Violation (°)
(1,25)	1:95:A:SER:C	1:96:A:GLN:N	1:96:A:GLN:CA	1:96:A:GLN:C	5	30.82
(1,45)	1:90:A:LEU:C	1:91:A:LYS:N	1:91:A:LYS:CA	1:91:A:LYS:C	2	20.04
(1,32)	1:90:A:LEU:N	1:90:A:LEU:CA	1:90:A:LEU:C	1:91:A:LYS:N	2	18.86
(1,12)	1:95:A:SER:N	1:95:A:SER:CA	1:95:A:SER:C	1:96:A:GLN:N	5	18.55
(1,26)	1:96:A:GLN:N	1:96:A:GLN:CA	1:96:A:GLN:C	1:97:A:ILE:N	5	16.51
(1,45)	1:90:A:LEU:C	1:91:A:LYS:N	1:91:A:LYS:CA	1:91:A:LYS:C	4	13.89
(1,32)	1:90:A:LEU:N	1:90:A:LEU:CA	1:90:A:LEU:C	1:91:A:LYS:N	4	13.84
(1,38)	1:81:A:MET:N	1:81:A:MET:CA	1:81:A:MET:C	1:82:A:PRO:N	7	13.47
(1,38)	1:81:A:MET:N	1:81:A:MET:CA	1:81:A:MET:C	1:82:A:PRO:N	5	13.42
(1,38)	1:81:A:MET:N	1:81:A:MET:CA	1:81:A:MET:C	1:82:A:PRO:N	6	13.35