



# wwPDB X-ray Structure Validation Summary Report ⓘ

Mar 6, 2026 – 04:57 AM UTC

PDB ID : 8BB7 / pdb\_00008bb7  
Title : Crystal structure of Mouse Plexin-B1 (20-535) in complex with VHH15  
Authors : Cowan, R.; Hall, G.; Carr, M.  
Deposited on : 2022-10-12  
Resolution : 2.95 Å(reported)

This is a wwPDB X-ray Structure Validation Summary Report for a publicly released PDB entry.

We welcome your comments at [validation@mail.wwpdb.org](mailto:validation@mail.wwpdb.org)

A user guide is available at

<https://www.wwpdb.org/validation/2017/XrayValidationReportHelp>

with specific help available everywhere you see the ⓘ symbol.

The types of validation reports are described at

<http://www.wwpdb.org/validation/2017/FAQs#types>.

---

The following versions of software and data (see [references ⓘ](#)) were used in the production of this report:

MolProbity : 4-5-2 with Phenix2.0  
Mogul : 2022.3.0, CSD as543be (2022)  
Xtriage (Phenix) : 2.0  
EDS : 3.0  
Percentile statistics : 20250101.v01 (using entries in the PDB archive January 1st 2025)  
CCP4 : 9.0.010 (Gargrove)  
Density-Fitness : 1.0.12  
Ideal geometry (proteins) : Engh & Huber (2001)  
Ideal geometry (DNA, RNA) : Parkinson et al. (1996)  
Validation Pipeline (wwPDB-VP) : 2.49

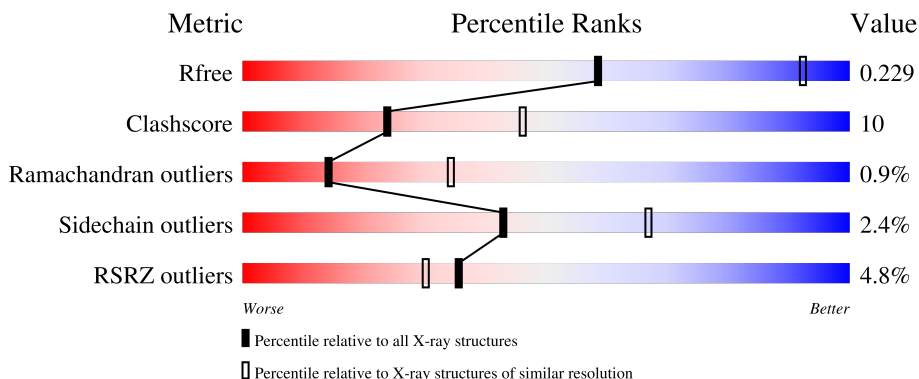
# 1 Overall quality at a glance

The following experimental techniques were used to determine the structure:

*X-RAY DIFFRACTION*

The reported resolution of this entry is 2.95 Å.

Percentile scores (ranging between 0-100) for global validation metrics of the entry are shown in the following graphic. The table shows the number of entries on which the scores are based.



Metric	Whole archive (#Entries)	Similar resolution (#Entries, resolution range(Å))
$R_{free}$	180053	1130 (2.98-2.94)
Clashscore	190562	1157 (2.98-2.94)
Ramachandran outliers	187476	1101 (2.98-2.94)
Sidechain outliers	187428	1101 (2.98-2.94)
RSRZ outliers	180081	1130 (2.98-2.94)

The table below summarises the geometric issues observed across the polymeric chains and their fit to the electron density. The red, orange, yellow and green segments of the lower bar indicate the fraction of residues that contain outliers for  $\geq 3$ , 2, 1 and 0 types of geometric quality criteria respectively. A grey segment represents the fraction of residues that are not modelled. The numeric value for each fraction is indicated below the corresponding segment, with a dot representing fractions  $\leq 5\%$ . The upper red bar (where present) indicates the fraction of residues that have poor fit to the electron density. The numeric value is given above the bar.

Mol	Chain	Length	Quality of chain
1	A	523	 5% 69% 20% • 8%
1	B	523	 4% 71% 20% • 7%
2	C	130	 8% 68% 22% • 7%
2	D	130	 3% 75% 19% • 5%

The following table lists non-polymeric compounds, carbohydrate monomers and non-standard

residues in protein, DNA, RNA chains that are outliers for geometric or electron-density-fit criteria:

Mol	Type	Chain	Res	Chirality	Geometry	Clashes	Electron density
3	NAG	B	603	X	-	-	-

## 2 Entry composition [i](#)

There are 4 unique types of molecules in this entry. The entry contains 9504 atoms, of which 0 are hydrogens and 0 are deuteriums.

In the tables below, the ZeroOcc column contains the number of atoms modelled with zero occupancy, the AltConf column contains the number of residues with at least one atom in alternate conformation and the Trace column contains the number of residues modelled with at most 2 atoms.

- Molecule 1 is a protein called Plexin-B1.

Mol	Chain	Residues	Atoms					ZeroOcc	AltConf	Trace
			Total	C	N	O	S			
1	B	485	3678	2318	642	697	21	0	0	0
1	A	479	3630	2288	631	690	21	0	0	0

There are 14 discrepancies between the modelled and reference sequences:

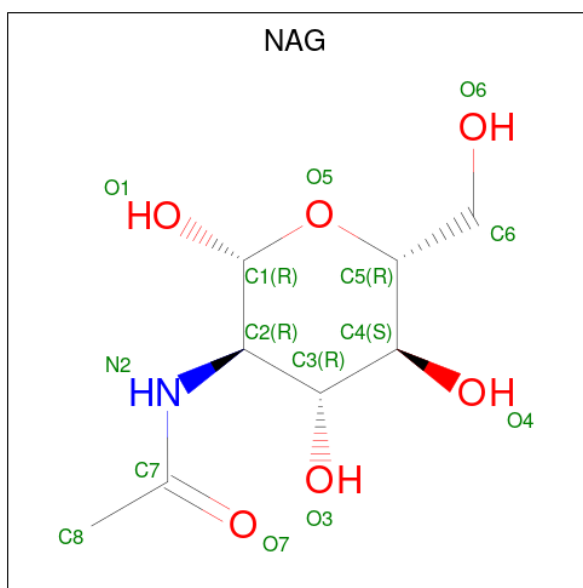
Chain	Residue	Modelled	Actual	Comment	Reference
B	536	LYS	-	expression tag	UNP Q8CJH3
B	537	HIS	-	expression tag	UNP Q8CJH3
B	538	HIS	-	expression tag	UNP Q8CJH3
B	539	HIS	-	expression tag	UNP Q8CJH3
B	540	HIS	-	expression tag	UNP Q8CJH3
B	541	HIS	-	expression tag	UNP Q8CJH3
B	542	HIS	-	expression tag	UNP Q8CJH3
A	536	LYS	-	expression tag	UNP Q8CJH3
A	537	HIS	-	expression tag	UNP Q8CJH3
A	538	HIS	-	expression tag	UNP Q8CJH3
A	539	HIS	-	expression tag	UNP Q8CJH3
A	540	HIS	-	expression tag	UNP Q8CJH3
A	541	HIS	-	expression tag	UNP Q8CJH3
A	542	HIS	-	expression tag	UNP Q8CJH3

- Molecule 2 is a protein called VHH15 Nanobody.

Mol	Chain	Residues	Atoms					ZeroOcc	AltConf	Trace
			Total	C	N	O	S			
2	D	124	941	584	165	186	6	0	0	0
2	C	121	921	573	161	181	6	0	0	0

- Molecule 3 is 2-acetamido-2-deoxy-beta-D-glucopyranose (CCD ID: NAG) (formula:

C<sub>8</sub>H<sub>15</sub>NO<sub>6</sub>).



Mol	Chain	Residues	Atoms				ZeroOcc	AltConf
3	B	1	Total	C	N	O	0	0
			14	8	1	5		
3	B	1	Total	C	N	O	0	0
			14	8	1	5		
3	B	1	Total	C	N	O	0	0
			14	8	1	5		
3	A	1	Total	C	N	O	0	0
			14	8	1	5		
3	A	1	Total	C	N	O	0	0
			14	8	1	5		
3	A	1	Total	C	N	O	0	0
			14	8	1	5		
3	A	1	Total	C	N	O	0	0
			14	8	1	5		

- Molecule 4 is water.

Mol	Chain	Residues	Atoms		ZeroOcc	AltConf
4	B	112	Total	O	0	0
			112	112		
4	D	23	Total	O	0	0
			23	23		
4	A	79	Total	O	0	0
			79	79		

*Continued on next page...*

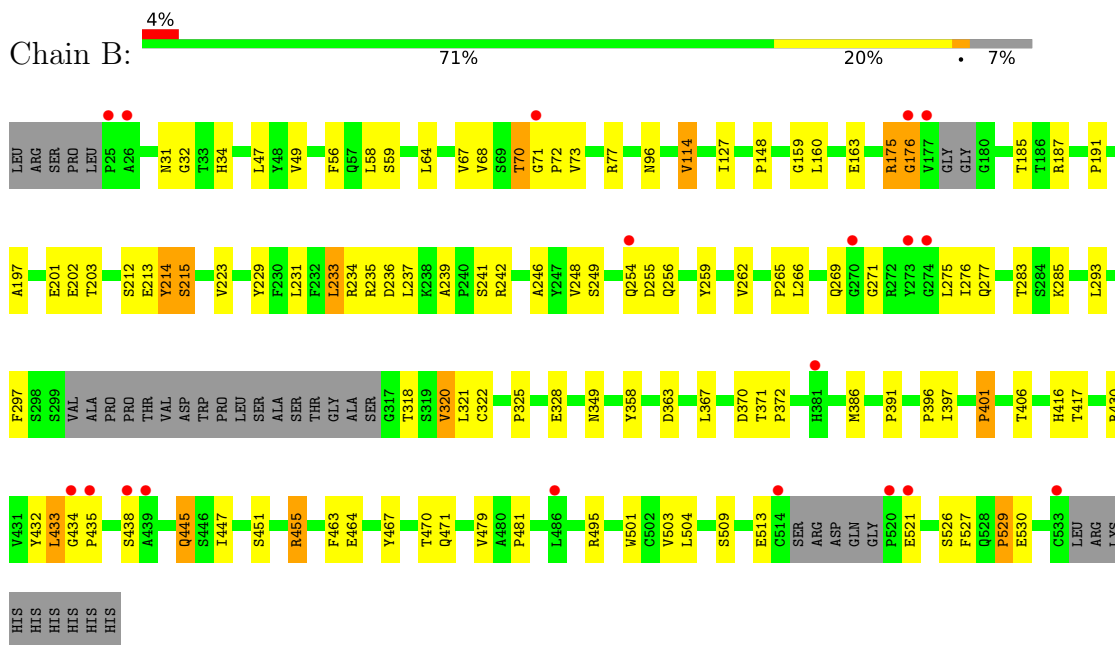
*Continued from previous page...*

<b>Mol</b>	<b>Chain</b>	<b>Residues</b>	<b>Atoms</b>		<b>ZeroOcc</b>	<b>AltConf</b>
4	C	8	Total	O	0	0
			8	8		

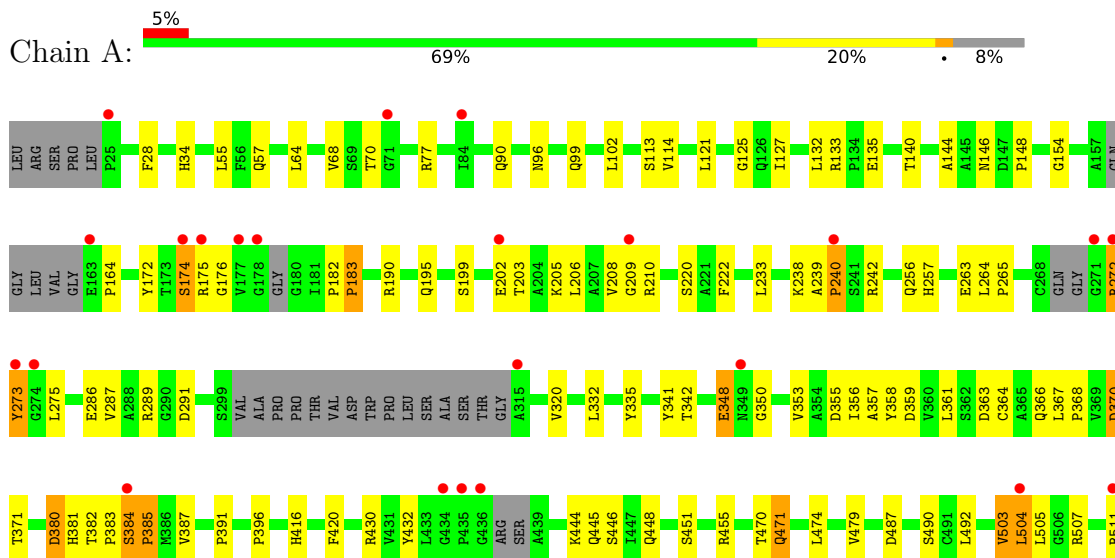
### 3 Residue-property plots [i](#)

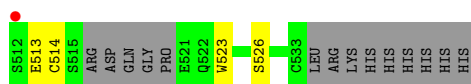
These plots are drawn for all protein, RNA, DNA and oligosaccharide chains in the entry. The first graphic for a chain summarises the proportions of the various outlier classes displayed in the second graphic. The second graphic shows the sequence view annotated by issues in geometry and electron density. Residues are color-coded according to the number of geometric quality criteria for which they contain at least one outlier: green = 0, yellow = 1, orange = 2 and red = 3 or more. A red dot above a residue indicates a poor fit to the electron density ( $RSRZ > 2$ ). Stretches of 2 or more consecutive residues without any outlier are shown as a green connector. Residues present in the sample, but not in the model, are shown in grey.

- Molecule 1: Plexin-B1

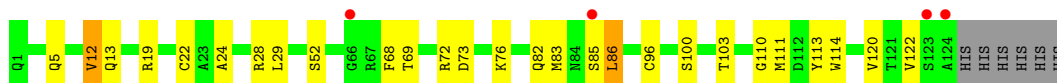
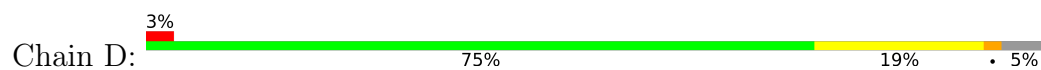


- Molecule 1: Plexin-B1

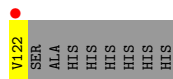




- Molecule 2: VHH15 Nanobody



- Molecule 2: VHH15 Nanobody



## 4 Data and refinement statistics i

Property	Value	Source
Space group	P 1 21 1	Depositor
Cell constants a, b, c, $\alpha$ , $\beta$ , $\gamma$	93.54Å 108.99Å 94.04Å 90.00° 90.37° 90.00°	Depositor
Resolution (Å)	47.15 – 2.95 47.15 – 2.95	Depositor EDS
% Data completeness (in resolution range)	84.8 (47.15-2.95) 78.1 (47.15-2.95)	Depositor EDS
$R_{merge}$	0.42	Depositor
$R_{sym}$	(Not available)	Depositor
$\langle I/\sigma(I) \rangle$ <sup>1</sup>	1.65 (at 2.96Å)	Xtrriage
Refinement program	PHENIX 1.20.1_4487	Depositor
R, $R_{free}$	0.203 , 0.229 0.203 , 0.229	Depositor DCC
$R_{free}$ test set	1703 reflections (5.02%)	wwPDB-VP
Wilson B-factor (Å <sup>2</sup> )	33.5	Xtrriage
Anisotropy	0.107	Xtrriage
Bulk solvent $k_{sol}$ (e/Å <sup>3</sup> ), $B_{sol}$ (Å <sup>2</sup> )	0.30 , 46.0	EDS
L-test for twinning <sup>2</sup>	$\langle  L  \rangle = 0.47$ , $\langle L^2 \rangle = 0.30$	Xtrriage
Estimated twinning fraction	0.017 for l,k,-h 0.039 for h,-k,-l 0.027 for l,-k,h	Xtrriage
$F_o, F_c$ correlation	0.89	EDS
Total number of atoms	9504	wwPDB-VP
Average B, all atoms (Å <sup>2</sup> )	43.0	wwPDB-VP

Xtrriage's analysis on translational NCS is as follows: *The largest off-origin peak in the Patterson function is 3.73% of the height of the origin peak. No significant pseudotranslation is detected.*

<sup>1</sup>Intensities estimated from amplitudes.

<sup>2</sup>Theoretical values of  $\langle |L| \rangle$ ,  $\langle L^2 \rangle$  for acentric reflections are 0.5, 0.333 respectively for untwinned datasets, and 0.375, 0.2 for perfectly twinned datasets.

## 5 Model quality [i](#)

### 5.1 Standard geometry [i](#)

Bond lengths and bond angles in the following residue types are not validated in this section: NAG

The Z score for a bond length (or angle) is the number of standard deviations the observed value is removed from the expected value. A bond length (or angle) with  $|Z| > 5$  is considered an outlier worth inspection. RMSZ is the root-mean-square of all Z scores of the bond lengths (or angles).

Mol	Chain	Bond lengths		Bond angles	
		RMSZ	# Z  >5	RMSZ	# Z  >5
1	A	0.50	6/3717 (0.2%)	0.73	5/5077 (0.1%)
1	B	0.44	0/3768	0.68	6/5148 (0.1%)
2	C	0.54	2/939 (0.2%)	0.77	3/1267 (0.2%)
2	D	0.54	2/959 (0.2%)	0.63	1/1294 (0.1%)
All	All	0.49	10/9383 (0.1%)	0.70	15/12786 (0.1%)

Chiral center outliers are detected by calculating the chiral volume of a chiral center and verifying if the center is modelled as a planar moiety or with the opposite hand. A planarity outlier is detected by checking planarity of atoms in a peptide group, atoms in a mainchain group or atoms of a sidechain that are expected to be planar.

Mol	Chain	#Chirality outliers	#Planarity outliers
1	A	0	4
1	B	0	4
2	D	0	1
All	All	0	9

The worst 5 of 10 bond length outliers are listed below:

Mol	Chain	Res	Type	Atoms	Z	Observed(Å)	Ideal(Å)
2	D	13	GLN	C-N	11.66	1.49	1.33
1	A	470	THR	C-N	-11.00	1.18	1.33
2	C	48	VAL	C-N	-8.98	1.22	1.33
1	A	503	VAL	C-N	8.18	1.44	1.33
2	C	49	LEU	C-N	-6.98	1.23	1.33

The worst 5 of 15 bond angle outliers are listed below:

Mol	Chain	Res	Type	Atoms	Z	Observed(°)	Ideal(°)
2	D	12	VAL	O-C-N	9.20	133.41	123.02

*Continued on next page...*

*Continued from previous page...*

Mol	Chain	Res	Type	Atoms	Z	Observed(°)	Ideal(°)
1	A	503	VAL	O-C-N	9.03	130.99	121.87
1	B	72	PRO	N-CA-C	-8.72	96.41	111.32
1	B	70	THR	N-CA-C	-8.61	102.94	113.19
1	A	470	THR	O-C-N	-7.86	112.13	122.59

There are no chirality outliers.

5 of 9 planarity outliers are listed below:

Mol	Chain	Res	Type	Group
1	B	175	ARG	Sidechain
1	B	234	ARG	Sidechain
1	B	235	ARG	Sidechain
1	B	455	ARG	Sidechain
2	D	19	ARG	Sidechain

## 5.2 Too-close contacts

In the following table, the Non-H and H(model) columns list the number of non-hydrogen atoms and hydrogen atoms in the chain respectively. The H(added) column lists the number of hydrogen atoms added and optimized by MolProbity. The Clashes column lists the number of clashes within the asymmetric unit, whereas Symm-Clashes lists symmetry-related clashes.

Mol	Chain	Non-H	H(model)	H(added)	Clashes	Symm-Clashes
1	A	3630	0	3515	76	1
1	B	3678	0	3571	72	1
2	C	921	0	878	24	0
2	D	941	0	899	17	0
3	A	70	0	65	4	0
3	B	42	0	39	0	0
4	A	79	0	0	3	0
4	B	112	0	0	0	0
4	C	8	0	0	0	0
4	D	23	0	0	1	0
All	All	9504	0	8967	185	1

The all-atom clashscore is defined as the number of clashes found per 1000 atoms (including hydrogen atoms). The all-atom clashscore for this structure is 10.

The worst 5 of 185 close contacts within the same asymmetric unit are listed below, sorted by their clash magnitude.

Atom-1	Atom-2	Interatomic distance (Å)	Clash overlap (Å)
1:B:31:ASN:HD21	3:A:601:NAG:C1	1.84	0.88
1:B:416:HIS:HB3	1:B:432:TYR:HE1	1.42	0.83
1:A:286:GLU:HG3	1:A:287:VAL:H	1.46	0.80
1:A:335:TYR:HE1	1:A:353:VAL:HG21	1.47	0.78
1:B:231:LEU:HD11	1:B:293:LEU:HD21	1.67	0.75

All (1) symmetry-related close contacts are listed below. The label for Atom-2 includes the symmetry operator and encoded unit-cell translations to be applied.

Atom-1	Atom-2	Interatomic distance (Å)	Clash overlap (Å)
1:B:370:ASP:OD1	1:A:446:SER:OG[2_555]	2.19	0.01

### 5.3 Torsion angles [i](#)

#### 5.3.1 Protein backbone [i](#)

In the following table, the Percentiles column shows the percent Ramachandran outliers of the chain as a percentile score with respect to all X-ray entries followed by that with respect to entries of similar resolution.

The Analysed column shows the number of residues for which the backbone conformation was analysed, and the total number of residues.

Mol	Chain	Analysed	Favoured	Allowed	Outliers	Percentiles	
1	A	467/523 (89%)	432 (92%)	32 (7%)	3 (1%)	21	45
1	B	477/523 (91%)	435 (91%)	36 (8%)	6 (1%)	9	26
2	C	119/130 (92%)	114 (96%)	4 (3%)	1 (1%)	16	37
2	D	122/130 (94%)	114 (93%)	7 (6%)	1 (1%)	16	37
All	All	1185/1306 (91%)	1095 (92%)	79 (7%)	11 (1%)	14	34

5 of 11 Ramachandran outliers are listed below:

Mol	Chain	Res	Type
2	D	86	LEU
1	B	71	GLY
1	B	176	GLY
1	B	215	SER
1	B	401	PRO

### 5.3.2 Protein sidechains [i](#)

In the following table, the Percentiles column shows the percent sidechain outliers of the chain as a percentile score with respect to all X-ray entries followed by that with respect to entries of similar resolution.

The Analysed column shows the number of residues for which the sidechain conformation was analysed, and the total number of residues.

Mol	Chain	Analysed	Rotameric	Outliers	Percentiles	
1	A	394/430 (92%)	385 (98%)	9 (2%)	44	67
1	B	399/430 (93%)	389 (98%)	10 (2%)	42	66
2	C	96/104 (92%)	92 (96%)	4 (4%)	26	53
2	D	98/104 (94%)	97 (99%)	1 (1%)	68	82
All	All	987/1068 (92%)	963 (98%)	24 (2%)	43	67

5 of 24 residues with a non-rotameric sidechain are listed below:

Mol	Chain	Res	Type
1	A	356	ILE
1	A	380	ASP
1	A	363	ASP
1	A	503	VAL
1	B	320	VAL

Sometimes sidechains can be flipped to improve hydrogen bonding and reduce clashes. 5 of 12 such sidechains are listed below:

Mol	Chain	Res	Type
1	A	445	GLN
1	A	485	HIS
2	C	119	GLN
2	C	3	GLN
1	B	494	HIS

### 5.3.3 RNA [i](#)

There are no RNA molecules in this entry.

## 5.4 Non-standard residues in protein, DNA, RNA chains [i](#)

There are no non-standard protein/DNA/RNA residues in this entry.

## 5.5 Carbohydrates [i](#)

There are no oligosaccharides in this entry.

## 5.6 Ligand geometry [i](#)

8 ligands are modelled in this entry.

In the following table, the Counts columns list the number of bonds (or angles) for which Mogul statistics could be retrieved, the number of bonds (or angles) that are observed in the model and the number of bonds (or angles) that are defined in the Chemical Component Dictionary. The Link column lists molecule types, if any, to which the group is linked. The Z score for a bond length (or angle) is the number of standard deviations the observed value is removed from the expected value. A bond length (or angle) with  $|Z| > 2$  is considered an outlier worth inspection. RMSZ is the root-mean-square of all Z scores of the bond lengths (or angles).

Mol	Type	Chain	Res	Link	Bond lengths			Bond angles		
					Counts	RMSZ	# Z  > 2	Counts	RMSZ	# Z  > 2
3	NAG	B	603	1	14,14,15	0.40	0	17,19,21	1.42	3 (17%)
3	NAG	B	602	1	14,14,15	0.54	0	17,19,21	0.62	0
3	NAG	B	601	1	14,14,15	0.21	0	17,19,21	0.52	0
3	NAG	A	601	-	14,14,15	0.43	0	17,19,21	3.09	3 (17%)
3	NAG	A	602	1	14,14,15	0.44	0	17,19,21	0.68	0
3	NAG	A	604	1	14,14,15	0.46	0	17,19,21	0.60	0
3	NAG	A	605	1	14,14,15	0.42	0	17,19,21	0.88	0
3	NAG	A	603	1	14,14,15	0.33	0	17,19,21	0.39	0

In the following table, the Chirals column lists the number of chiral outliers, the number of chiral centers analysed, the number of these observed in the model and the number defined in the Chemical Component Dictionary. Similar counts are reported in the Torsion and Rings columns. '-' means no outliers of that kind were identified.

Mol	Type	Chain	Res	Link	Chirals	Torsions	Rings
3	NAG	B	603	1	1/1/5/7	3/6/23/26	0/1/1/1
3	NAG	B	602	1	-	2/6/23/26	0/1/1/1
3	NAG	B	601	1	-	2/6/23/26	0/1/1/1
3	NAG	A	601	-	-	3/6/23/26	0/1/1/1
3	NAG	A	602	1	-	2/6/23/26	0/1/1/1
3	NAG	A	604	1	-	2/6/23/26	0/1/1/1
3	NAG	A	605	1	-	4/6/23/26	0/1/1/1
3	NAG	A	603	1	-	4/6/23/26	0/1/1/1

There are no bond length outliers.

The worst 5 of 6 bond angle outliers are listed below:

Mol	Chain	Res	Type	Atoms	Z	Observed(°)	Ideal(°)
3	A	601	NAG	O5-C1-C2	-9.35	96.83	111.29
3	A	601	NAG	C1-C2-N2	5.59	119.24	110.43
3	A	601	NAG	C2-N2-C7	5.47	130.23	122.90
3	B	603	NAG	C1-C2-N2	3.87	116.52	110.43
3	B	603	NAG	C2-N2-C7	3.23	127.23	122.90

All (1) chirality outliers are listed below:

Mol	Chain	Res	Type	Atom
3	B	603	NAG	C1

5 of 22 torsion outliers are listed below:

Mol	Chain	Res	Type	Atoms
3	B	603	NAG	C1-C2-N2-C7
3	A	601	NAG	C1-C2-N2-C7
3	A	602	NAG	C8-C7-N2-C2
3	A	602	NAG	O7-C7-N2-C2
3	B	601	NAG	O5-C5-C6-O6

There are no ring outliers.

2 monomers are involved in 4 short contacts:

Mol	Chain	Res	Type	Clashes	Symm-Clashes
3	A	601	NAG	3	0
3	A	602	NAG	1	0

## 5.7 Other polymers [i](#)

There are no such residues in this entry.

## 5.8 Polymer linkage issues [i](#)

The following chains have linkage breaks:

Mol	Chain	Number of breaks
1	A	1

All chain breaks are listed below:

Model	Chain	Residue-1	Atom-1	Residue-2	Atom-2	Distance (Å)
1	A	470:THR	C	471:GLN	N	1.18

## 6 Fit of model and data [i](#)

### 6.1 Protein, DNA and RNA chains [i](#)

In the following table, the column labelled ‘#RSRZ > 2’ contains the number (and percentage) of RSRZ outliers, followed by percent RSRZ outliers for the chain as percentile scores relative to all X-ray entries and entries of similar resolution. The OWAB column contains the minimum, median, 95<sup>th</sup> percentile and maximum values of the occupancy-weighted average B-factor per residue. The column labelled ‘Q < 0.9’ lists the number of (and percentage) of residues with an average occupancy less than 0.9.

Mol	Chain	Analysed	<RSRZ>	#RSRZ>2	OWAB(Å <sup>2</sup> )	Q<0.9
1	A	479/523 (91%)	0.32	24 (5%) 34 28	22, 41, 73, 108	0
1	B	485/523 (92%)	0.16	19 (3%) 43 35	18, 35, 71, 103	0
2	C	121/130 (93%)	0.90	11 (9%) 15 13	33, 57, 84, 103	0
2	D	124/130 (95%)	0.05	4 (3%) 50 43	22, 35, 59, 93	0
All	All	1209/1306 (92%)	0.29	58 (4%) 35 30	18, 39, 74, 108	0

The worst 5 of 58 RSRZ outliers are listed below:

Mol	Chain	Res	Type	RSRZ
1	B	25	PRO	5.0
1	B	520	PRO	5.0
2	D	124	ALA	4.7
1	A	436	GLY	4.5
2	C	11	LEU	4.2

### 6.2 Non-standard residues in protein, DNA, RNA chains [i](#)

There are no non-standard protein/DNA/RNA residues in this entry.

### 6.3 Carbohydrates [i](#)

There are no oligosaccharides in this entry.

### 6.4 Ligands [i](#)

In the following table, the Atoms column lists the number of modelled atoms in the group and the number defined in the chemical component dictionary. The B-factors column lists the minimum, median, 95<sup>th</sup> percentile and maximum values of B factors of atoms in the group. The column labelled ‘Q < 0.9’ lists the number of atoms with occupancy less than 0.9.

Mol	Type	Chain	Res	Atoms	RSCC	RSR	B-factors( $\text{\AA}^2$ )	Q<0.9
3	NAG	B	603	14/15	0.51	0.23	52,85,89,91	0
3	NAG	A	605	14/15	0.65	0.19	72,85,96,99	0
3	NAG	A	603	14/15	0.70	0.17	74,77,86,87	0
3	NAG	B	602	14/15	0.76	0.12	64,73,82,82	0
3	NAG	A	601	14/15	0.86	0.16	29,38,51,72	0
3	NAG	A	604	14/15	0.91	0.10	38,50,56,58	0
3	NAG	B	601	14/15	0.91	0.09	37,44,51,55	0
3	NAG	A	602	14/15	0.92	0.11	29,33,38,45	0

## 6.5 Other polymers [\(i\)](#)

There are no such residues in this entry.