



Full wwPDB X-ray Structure Validation Report ⓘ

Mar 6, 2026 – 10:45 PM UTC

PDB ID : 2BBC / pdb_00002bbc
Title : Structure of Cobalamin-complexed Bovine Transcobalamin in trigonal crystal form
Authors : Wuerges, J.; Garau, G.; Geremia, S.; Fedosov, S.N.; Petersen, T.E.; Randaccio, L.
Deposited on : 2005-10-17
Resolution : 2.40 Å(reported)

This is a Full wwPDB X-ray Structure Validation Report for a publicly released PDB entry.

We welcome your comments at validation@mail.wwpdb.org

A user guide is available at

<https://www.wwpdb.org/validation/2017/XrayValidationReportHelp>

with specific help available everywhere you see the ⓘ symbol.

The types of validation reports are described at

<http://www.wwpdb.org/validation/2017/FAQs#types>.

The following versions of software and data (see [references ⓘ](#)) were used in the production of this report:

MolProbity : 4-5-2 with Phenix2.0
Mogul : 2022.3.0, CSD as543be (2022)
Xtrriage (Phenix) : 2.0
EDS : 3.0
Buster-report : wwPDB partial adaption of 1.1.7 (2018)
Percentile statistics : 20250101.v01 (using entries in the PDB archive January 1st 2025)
CCP4 : 9.0.010 (Gargrove)
Density-Fitness : 1.0.12
Ideal geometry (proteins) : Engh & Huber (2001)
Ideal geometry (DNA, RNA) : Parkinson et al. (1996)
Validation Pipeline (wwPDB-VP) : 2.49

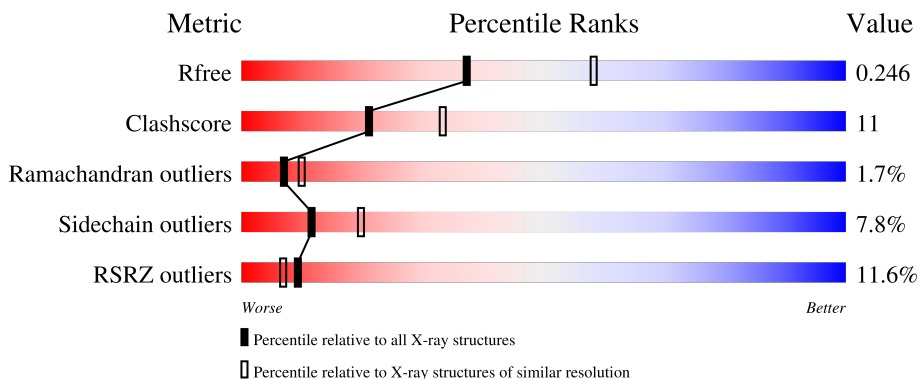
1 Overall quality at a glance

The following experimental techniques were used to determine the structure:

X-RAY DIFFRACTION

The reported resolution of this entry is 2.40 Å.

Percentile scores (ranging between 0-100) for global validation metrics of the entry are shown in the following graphic. The table shows the number of entries on which the scores are based.



Metric	Whole archive (#Entries)	Similar resolution (#Entries, resolution range(Å))
R_{free}	180053	4912 (2.40-2.40)
Clashscore	190562	5391 (2.40-2.40)
Ramachandran outliers	187476	5320 (2.40-2.40)
Sidechain outliers	187428	5321 (2.40-2.40)
RSRZ outliers	180081	4916 (2.40-2.40)

The table below summarises the geometric issues observed across the polymeric chains and their fit to the electron density. The red, orange, yellow and green segments of the lower bar indicate the fraction of residues that contain outliers for ≥ 3 , 2, 1 and 0 types of geometric quality criteria respectively. A grey segment represents the fraction of residues that are not modelled. The numeric value for each fraction is indicated below the corresponding segment, with a dot representing fractions $\leq 5\%$. The upper red bar (where present) indicates the fraction of residues that have poor fit to the electron density. The numeric value is given above the bar.

Mol	Chain	Length	Quality of chain
1	A	414	

2 Entry composition [i](#)

There are 4 unique types of molecules in this entry. The entry contains 3533 atoms, of which 0 are hydrogens and 0 are deuteriums.

In the tables below, the ZeroOcc column contains the number of atoms modelled with zero occupancy, the AltConf column contains the number of residues with at least one atom in alternate conformation and the Trace column contains the number of residues modelled with at most 2 atoms.

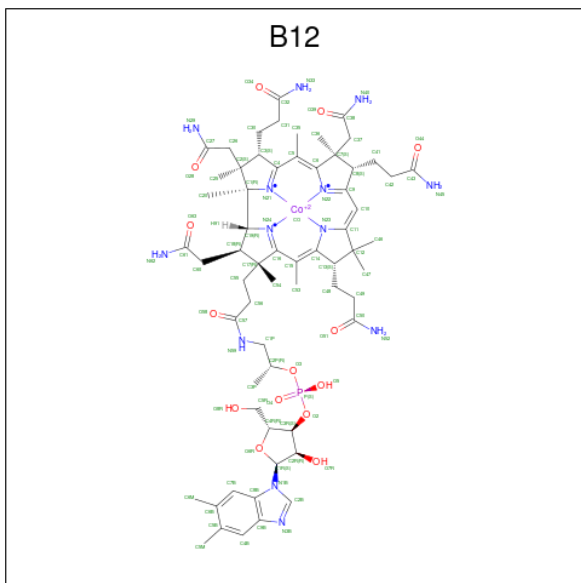
- Molecule 1 is a protein called Transcobalamin II.

Mol	Chain	Residues	Atoms					ZeroOcc	AltConf	Trace
			Total	C	N	O	S			
1	A	414	3254	2057	587	597	13	0	0	0

- Molecule 2 is CHLORIDE ION (CCD ID: CL) (formula: Cl).

Mol	Chain	Residues	Atoms		ZeroOcc	AltConf
2	A	3	Total	Cl	0	0
			3	3		

- Molecule 3 is COBALAMIN (CCD ID: B12) (formula: C₆₂H₈₉CoN₁₃O₁₄P).



Mol	Chain	Residues	Atoms					ZeroOcc	AltConf	
			Total	C	Co	N	O			P
3	A	1	91	62	1	13	14	1	0	0

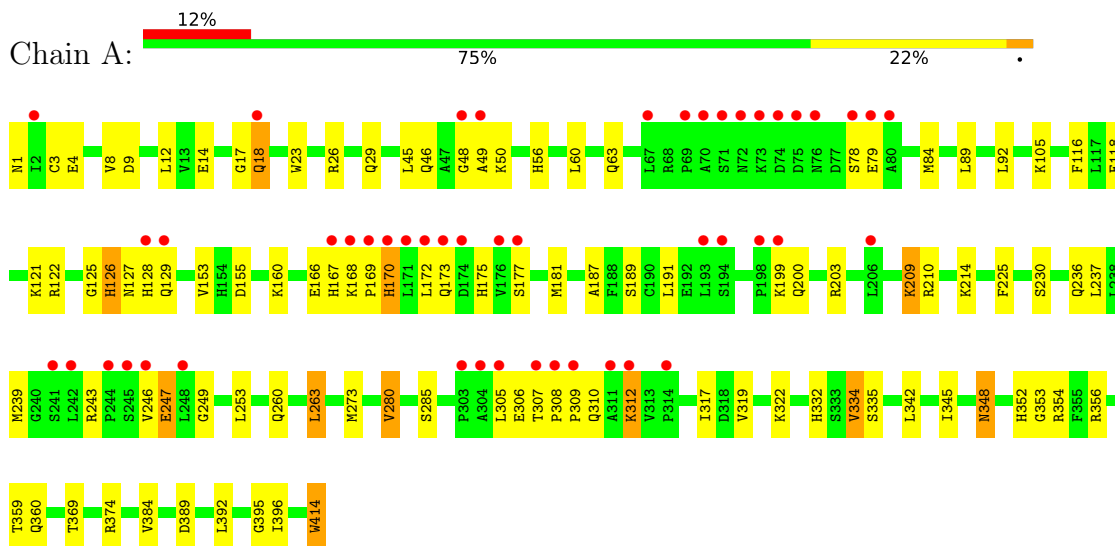
- Molecule 4 is water.

Mol	Chain	Residues	Atoms		ZeroOcc	AltConf
4	A	185	Total 185	O 185	0	0

3 Residue-property plots [i](#)

These plots are drawn for all protein, RNA, DNA and oligosaccharide chains in the entry. The first graphic for a chain summarises the proportions of the various outlier classes displayed in the second graphic. The second graphic shows the sequence view annotated by issues in geometry and electron density. Residues are color-coded according to the number of geometric quality criteria for which they contain at least one outlier: green = 0, yellow = 1, orange = 2 and red = 3 or more. A red dot above a residue indicates a poor fit to the electron density ($RSRZ > 2$). Stretches of 2 or more consecutive residues without any outlier are shown as a green connector. Residues present in the sample, but not in the model, are shown in grey.

- Molecule 1: Transcobalamin II



4 Data and refinement statistics

Property	Value	Source
Space group	P 31 2 1	Depositor
Cell constants a, b, c, α , β , γ	99.57Å 99.57Å 128.63Å 90.00° 90.00° 120.00°	Depositor
Resolution (Å)	20.00 – 2.40 20.00 – 2.40	Depositor EDS
% Data completeness (in resolution range)	99.3 (20.00-2.40) 99.1 (20.00-2.40)	Depositor EDS
R_{merge}	0.05	Depositor
R_{sym}	(Not available)	Depositor
$\langle I/\sigma(I) \rangle$ ¹	2.17 (at 2.41Å)	Xtrriage
Refinement program	REFMAC	Depositor
R, R_{free}	0.204 , 0.240 0.215 , 0.246	Depositor DCC
R_{free} test set	1192 reflections (4.07%)	wwPDB-VP
Wilson B-factor (Å ²)	46.9	Xtrriage
Anisotropy	0.063	Xtrriage
Bulk solvent k_{sol} (e/Å ³), B_{sol} (Å ²)	0.32 , 46.4	EDS
L-test for twinning ²	$\langle L \rangle = 0.50$, $\langle L^2 \rangle = 0.33$	Xtrriage
Estimated twinning fraction	0.024 for -h,-k,l	Xtrriage
F_o, F_c correlation	0.94	EDS
Total number of atoms	3533	wwPDB-VP
Average B, all atoms (Å ²)	58.0	wwPDB-VP

Xtrriage's analysis on translational NCS is as follows: *The largest off-origin peak in the Patterson function is 3.77% of the height of the origin peak. No significant pseudotranslation is detected.*

¹Intensities estimated from amplitudes.

²Theoretical values of $\langle |L| \rangle$, $\langle L^2 \rangle$ for acentric reflections are 0.5, 0.333 respectively for untwinned datasets, and 0.375, 0.2 for perfectly twinned datasets.

5 Model quality [i](#)

5.1 Standard geometry [i](#)

Bond lengths and bond angles in the following residue types are not validated in this section: CL, B12

The Z score for a bond length (or angle) is the number of standard deviations the observed value is removed from the expected value. A bond length (or angle) with $|Z| > 5$ is considered an outlier worth inspection. RMSZ is the root-mean-square of all Z scores of the bond lengths (or angles).

Mol	Chain	Bond lengths		Bond angles	
		RMSZ	# $ Z > 5$	RMSZ	# $ Z > 5$
1	A	0.76	0/3319	1.01	1/4491 (0.0%)

Chiral center outliers are detected by calculating the chiral volume of a chiral center and verifying if the center is modelled as a planar moiety or with the opposite hand. A planarity outlier is detected by checking planarity of atoms in a peptide group, atoms in a mainchain group or atoms of a sidechain that are expected to be planar.

Mol	Chain	#Chirality outliers	#Planarity outliers
1	A	0	1

There are no bond length outliers.

All (1) bond angle outliers are listed below:

Mol	Chain	Res	Type	Atoms	Z	Observed($^{\circ}$)	Ideal($^{\circ}$)
1	A	167	HIS	N-CA-C	5.75	118.33	109.07

There are no chirality outliers.

All (1) planarity outliers are listed below:

Mol	Chain	Res	Type	Group
1	A	49	ALA	Peptide

5.2 Too-close contacts [i](#)

In the following table, the Non-H and H(model) columns list the number of non-hydrogen atoms and hydrogen atoms in the chain respectively. The H(added) column lists the number of hydrogen atoms added and optimized by MolProbity. The Clashes column lists the number of clashes within the asymmetric unit, whereas Symm-Clashes lists symmetry-related clashes.

Mol	Chain	Non-H	H(model)	H(added)	Clashes	Symm-Clashes
1	A	3254	0	3317	63	0
2	A	3	0	0	0	0
3	A	91	0	88	17	0
4	A	185	0	0	2	0
All	All	3533	0	3405	74	0

The all-atom clashscore is defined as the number of clashes found per 1000 atoms (including hydrogen atoms). The all-atom clashscore for this structure is 11.

All (74) close contacts within the same asymmetric unit are listed below, sorted by their clash magnitude.

Atom-1	Atom-2	Interatomic distance (Å)	Clash overlap (Å)
1:A:173:GLN:HG3	1:A:414:TRP:HD1	1.33	0.92
1:A:1:ASN:HD22	1:A:4:GLU:HG3	1.43	0.83
1:A:236:GLN:HA	1:A:239:MET:HE3	1.67	0.77
3:A:0:B12:H552	3:A:0:B12:H531	1.74	0.69
3:A:0:B12:H362	3:A:0:B12:H351	1.76	0.67
1:A:173:GLN:HG3	1:A:414:TRP:CD1	2.24	0.63
1:A:63:GLN:NE2	1:A:105:LYS:HE3	2.14	0.62
1:A:125:GLY:O	1:A:160:LYS:NZ	2.35	0.60
1:A:175:HIS:HE1	3:A:0:B12:C4	2.17	0.58
1:A:260:GLN:HA	1:A:263:LEU:HD22	1.85	0.57
1:A:414:TRP:HZ2	3:A:0:B12:N52	2.01	0.57
1:A:170:HIS:HB2	1:A:214:LYS:HZ2	1.69	0.56
1:A:166:GLU:OE2	1:A:203:ARG:HG2	2.05	0.56
1:A:29:GLN:HE22	1:A:79:GLU:HG3	1.69	0.56
1:A:170:HIS:HB2	1:A:214:LYS:NZ	2.21	0.56
1:A:414:TRP:CZ2	3:A:0:B12:N52	2.66	0.55
1:A:126:HIS:HE1	1:A:129:GLN:HB2	1.72	0.55
1:A:247:GLU:H	1:A:247:GLU:CD	2.15	0.54
3:A:0:B12:C61	3:A:0:B12:H252	2.38	0.53
1:A:359:THR:HG21	1:A:396:ILE:HD11	1.90	0.53
1:A:332:HIS:HE1	1:A:353:GLY:HA3	1.76	0.51
1:A:175:HIS:HE1	3:A:0:B12:C5	2.24	0.50
1:A:310:GLN:H	1:A:310:GLN:CD	2.20	0.49
1:A:84:MET:HG3	1:A:116:PHE:HB2	1.93	0.49
1:A:384:VAL:HG12	1:A:392:LEU:HD12	1.94	0.49
1:A:225:PHE:O	1:A:230:SER:HB2	2.13	0.48
1:A:236:GLN:CG	1:A:280:VAL:HG23	2.43	0.48
1:A:209:LYS:CE	1:A:243:ARG:HG2	2.42	0.48
1:A:334:VAL:HG21	1:A:345:ILE:HG23	1.94	0.48
1:A:384:VAL:CG1	1:A:392:LEU:HD12	2.44	0.48

Continued on next page...

Continued from previous page...

Atom-1	Atom-2	Interatomic distance (Å)	Clash overlap (Å)
1:A:1:ASN:ND2	1:A:4:GLU:HG3	2.20	0.47
1:A:395:GLY:HA3	3:A:0:B12:HM53	1.96	0.47
3:A:0:B12:O28	3:A:0:B12:H3	2.13	0.47
1:A:273:MET:HE2	1:A:273:MET:HA	1.95	0.47
1:A:332:HIS:CD2	1:A:334:VAL:HG12	2.49	0.47
3:A:0:B12:H252	3:A:0:B12:N62	2.30	0.47
1:A:56:HIS:ND1	4:A:515:HOH:O	2.35	0.47
1:A:126:HIS:CG	1:A:127:ASN:H	2.28	0.47
1:A:187:ALA:O	1:A:191:LEU:HG	2.14	0.47
1:A:89:LEU:HD23	1:A:92:LEU:HD12	1.97	0.45
1:A:209:LYS:HD2	1:A:243:ARG:HE	1.81	0.45
1:A:236:GLN:HB3	1:A:285:SER:HB2	1.99	0.45
1:A:319:VAL:CG1	1:A:334:VAL:HG22	2.46	0.45
3:A:0:B12:H353	3:A:0:B12:H302	1.97	0.45
1:A:46:GLN:HG2	1:A:48:GLY:H	1.82	0.45
1:A:342:LEU:CD2	1:A:384:VAL:HG11	2.46	0.45
1:A:23:TRP:HA	1:A:26:ARG:HD2	1.99	0.44
1:A:236:GLN:HG3	1:A:280:VAL:HG23	1.99	0.44
1:A:121:LYS:HG3	1:A:160:LYS:HG3	2.00	0.44
1:A:352:HIS:HD2	4:A:500:HOH:O	2.00	0.44
1:A:384:VAL:HG12	1:A:392:LEU:CD1	2.48	0.44
1:A:128:HIS:CE1	1:A:160:LYS:HD3	2.52	0.44
3:A:0:B12:H471	3:A:0:B12:H491	1.99	0.44
1:A:308:PRO:HA	1:A:309:PRO:HD3	1.85	0.43
1:A:310:GLN:C	1:A:312:LYS:H	2.25	0.43
1:A:1:ASN:HD21	1:A:3:CYS:HB2	1.83	0.43
3:A:0:B12:H531	3:A:0:B12:C55	2.41	0.43
1:A:118:GLU:OE2	1:A:122:ARG:HD2	2.18	0.43
1:A:155:ASP:HA	1:A:200:GLN:HE22	1.83	0.43
3:A:0:B12:H2B	3:A:0:B12:C14	2.49	0.43
1:A:9:ASP:HB3	1:A:12:LEU:CD1	2.48	0.42
1:A:18:GLN:O	1:A:18:GLN:NE2	2.52	0.42
1:A:118:GLU:O	1:A:122:ARG:HG3	2.19	0.42
1:A:175:HIS:HE1	3:A:0:B12:N21	2.17	0.42
1:A:17:GLY:HA3	1:A:45:LEU:HD13	2.01	0.42
1:A:317:ILE:O	1:A:335:SER:HA	2.20	0.42
1:A:360:GLN:CD	1:A:369:THR:HG21	2.44	0.41
1:A:360:GLN:HG2	1:A:369:THR:HG21	2.03	0.41
1:A:249:GLY:O	1:A:253:LEU:HG	2.21	0.41
1:A:170:HIS:CB	1:A:214:LYS:NZ	2.83	0.41
3:A:0:B12:H491	3:A:0:B12:C47	2.51	0.41

Continued on next page...

Continued from previous page...

Atom-1	Atom-2	Interatomic distance (Å)	Clash overlap (Å)
1:A:126:HIS:CE1	1:A:129:GLN:O	2.75	0.40
1:A:348:ASN:C	1:A:348:ASN:ND2	2.80	0.40
3:A:0:B12:H262	3:A:0:B12:H91	1.80	0.40

There are no symmetry-related clashes.

5.3 Torsion angles [i](#)

5.3.1 Protein backbone [i](#)

In the following table, the Percentiles column shows the percent Ramachandran outliers of the chain as a percentile score with respect to all X-ray entries followed by that with respect to entries of similar resolution.

The Analysed column shows the number of residues for which the backbone conformation was analysed, and the total number of residues.

Mol	Chain	Analysed	Favoured	Allowed	Outliers	Percentiles
1	A	412/414 (100%)	383 (93%)	22 (5%)	7 (2%)	7 10

All (7) Ramachandran outliers are listed below:

Mol	Chain	Res	Type
1	A	126	HIS
1	A	177	SER
1	A	78	SER
1	A	169	PRO
1	A	307	THR
1	A	306	GLU
1	A	168	LYS

5.3.2 Protein sidechains [i](#)

In the following table, the Percentiles column shows the percent sidechain outliers of the chain as a percentile score with respect to all X-ray entries followed by that with respect to entries of similar resolution.

The Analysed column shows the number of residues for which the sidechain conformation was analysed, and the total number of residues.

Mol	Chain	Analysed	Rotameric	Outliers	Percentiles
1	A	358/358 (100%)	330 (92%)	28 (8%)	11 20

All (28) residues with a non-rotameric sidechain are listed below:

Mol	Chain	Res	Type
1	A	8	VAL
1	A	14	GLU
1	A	18	GLN
1	A	50	LYS
1	A	60	LEU
1	A	153	VAL
1	A	170	HIS
1	A	172	LEU
1	A	181	MET
1	A	189	SER
1	A	199	LYS
1	A	209	LYS
1	A	210	ARG
1	A	237	LEU
1	A	246	VAL
1	A	247	GLU
1	A	263	LEU
1	A	280	VAL
1	A	305	LEU
1	A	312	LYS
1	A	322	LYS
1	A	334	VAL
1	A	348	ASN
1	A	354	ARG
1	A	356	ARG
1	A	374	ARG
1	A	389	ASP
1	A	414	TRP

Sometimes sidechains can be flipped to improve hydrogen bonding and reduce clashes. All (11) such sidechains are listed below:

Mol	Chain	Res	Type
1	A	1	ASN
1	A	29	GLN
1	A	63	GLN
1	A	127	ASN
1	A	128	HIS

Continued on next page...

Continued from previous page...

Mol	Chain	Res	Type
1	A	167	HIS
1	A	173	GLN
1	A	295	GLN
1	A	348	ASN
1	A	360	GLN
1	A	383	GLN

5.3.3 RNA [i](#)

There are no RNA molecules in this entry.

5.4 Non-standard residues in protein, DNA, RNA chains [i](#)

There are no non-standard protein/DNA/RNA residues in this entry.

5.5 Carbohydrates [i](#)

There are no oligosaccharides in this entry.

5.6 Ligand geometry [i](#)

Of 4 ligands modelled in this entry, 3 are monoatomic - leaving 1 for Mogul analysis.

In the following table, the Counts columns list the number of bonds (or angles) for which Mogul statistics could be retrieved, the number of bonds (or angles) that are observed in the model and the number of bonds (or angles) that are defined in the Chemical Component Dictionary. The Link column lists molecule types, if any, to which the group is linked. The Z score for a bond length (or angle) is the number of standard deviations the observed value is removed from the expected value. A bond length (or angle) with $|Z| > 2$ is considered an outlier worth inspection. RMSZ is the root-mean-square of all Z scores of the bond lengths (or angles).

Mol	Type	Chain	Res	Link	Bond lengths			Bond angles		
					Counts	RMSZ	# $ Z > 2$	Counts	RMSZ	# $ Z > 2$
3	B12	A	0	1	94,101,101	1.05	4 (4%)	149,166,166	1.17	8 (5%)

In the following table, the Chirals column lists the number of chiral outliers, the number of chiral centers analysed, the number of these observed in the model and the number defined in the Chemical Component Dictionary. Similar counts are reported in the Torsion and Rings columns. '-' means no outliers of that kind were identified.

Mol	Type	Chain	Res	Link	Chirals	Torsions	Rings
3	B12	A	0	1	-	5/56/223/223	0/3/11/11

All (4) bond length outliers are listed below:

Mol	Chain	Res	Type	Atoms	Z	Observed(Å)	Ideal(Å)
3	A	0	B12	C14-N23	3.92	1.40	1.35
3	A	0	B12	C11-N23	-2.78	1.31	1.36
3	A	0	B12	C2B-N1B	-2.22	1.33	1.37
3	A	0	B12	C4B-C9B	-2.08	1.36	1.40

All (8) bond angle outliers are listed below:

Mol	Chain	Res	Type	Atoms	Z	Observed(°)	Ideal(°)
3	A	0	B12	C9-N22-C6	5.47	111.86	105.28
3	A	0	B12	C2R-C1R-N1B	-4.63	101.79	113.30
3	A	0	B12	C55-C17-C18	-3.35	104.72	111.12
3	A	0	B12	C19-N24-C16	2.98	110.54	107.29
3	A	0	B12	C1-C19-N24	2.91	109.48	106.25
3	A	0	B12	O8R-C5R-C4R	-2.79	101.82	111.33
3	A	0	B12	O6R-C1R-C2R	-2.66	100.93	106.62
3	A	0	B12	C54-C17-C55	2.05	112.68	109.27

There are no chirality outliers.

All (5) torsion outliers are listed below:

Mol	Chain	Res	Type	Atoms
3	A	0	B12	O6R-C4R-C5R-O8R
3	A	0	B12	C3R-C4R-C5R-O8R
3	A	0	B12	O6R-C1R-N1B-C8B
3	A	0	B12	C13-C48-C49-C50
3	A	0	B12	C3R-O2-P-O4

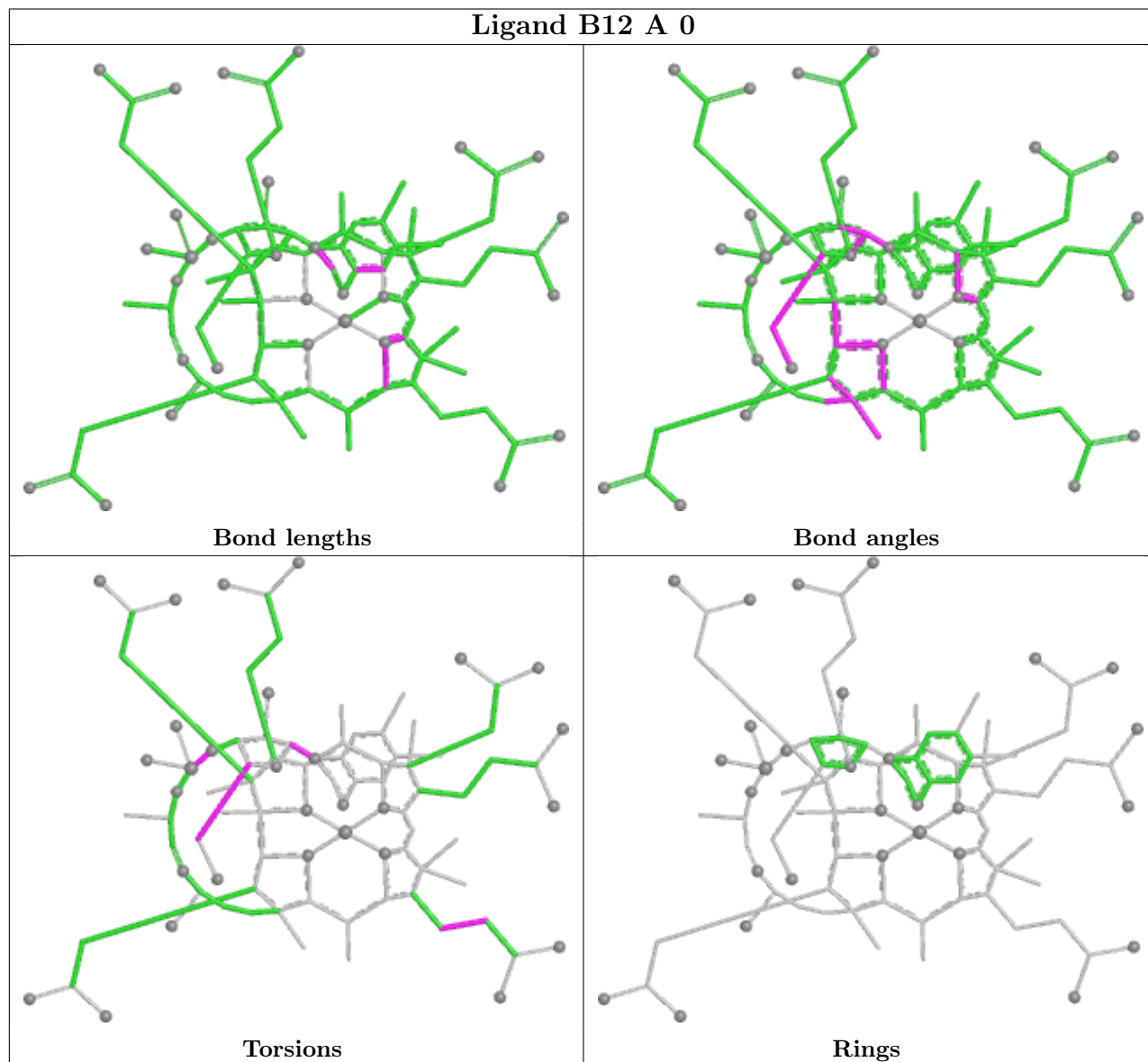
There are no ring outliers.

1 monomer is involved in 17 short contacts:

Mol	Chain	Res	Type	Clashes	Symm-Clashes
3	A	0	B12	17	0

The following is a two-dimensional graphical depiction of Mogul quality analysis of bond lengths, bond angles, torsion angles, and ring geometry for all instances of the Ligand of Interest. In addition, ligands with molecular weight > 250 and outliers as shown on the validation Tables will also be included. For torsion angles, if less than 5% of the Mogul distribution of torsion angles is

within 10 degrees of the torsion angle in question, then that torsion angle is considered an outlier. Any bond that is central to one or more torsion angles identified as an outlier by Mogul will be highlighted in the graph. For rings, the root-mean-square deviation (RMSD) between the ring in question and similar rings identified by Mogul is calculated over all ring torsion angles. If the average RMSD is greater than 60 degrees and the minimal RMSD between the ring in question and any Mogul-identified rings is also greater than 60 degrees, then that ring is considered an outlier. The outliers are highlighted in purple. The color gray indicates Mogul did not find sufficient equivalents in the CSD to analyse the geometry.



5.7 Other polymers [\(i\)](#)

There are no such residues in this entry.

5.8 Polymer linkage issues

There are no chain breaks in this entry.

6 Fit of model and data

6.1 Protein, DNA and RNA chains

In the following table, the column labelled ‘#RSRZ> 2’ contains the number (and percentage) of RSRZ outliers, followed by percent RSRZ outliers for the chain as percentile scores relative to all X-ray entries and entries of similar resolution. The OWAB column contains the minimum, median, 95th percentile and maximum values of the occupancy-weighted average B-factor per residue. The column labelled ‘Q< 0.9’ lists the number of (and percentage) of residues with an average occupancy less than 0.9.

Mol	Chain	Analysed	<RSRZ>	#RSRZ>2	OWAB(Å ²)	Q<0.9
1	A	414/414 (100%)	0.56	48 (11%) 9 7	24, 50, 114, 161	0

All (48) RSRZ outliers are listed below:

Mol	Chain	Res	Type	RSRZ
1	A	303	PRO	6.7
1	A	70	ALA	6.4
1	A	71	SER	6.3
1	A	305	LEU	5.9
1	A	311	ALA	5.7
1	A	309	PRO	5.2
1	A	78	SER	4.9
1	A	168	LYS	4.7
1	A	244	PRO	4.7
1	A	176	VAL	4.6
1	A	73	LYS	4.5
1	A	308	PRO	4.2
1	A	242	LEU	4.2
1	A	49	ALA	4.1
1	A	169	PRO	4.0
1	A	48	GLY	3.9
1	A	79	GLU	3.8
1	A	172	LEU	3.6
1	A	307	THR	3.5
1	A	194	SER	3.3
1	A	171	LEU	3.3
1	A	241	SER	3.2
1	A	246	VAL	3.1
1	A	304	ALA	2.9
1	A	75	ASP	2.9
1	A	72	ASN	2.8
1	A	314	PRO	2.7

Continued on next page...

Continued from previous page...

Mol	Chain	Res	Type	RSRZ
1	A	69	PRO	2.7
1	A	76	ASN	2.7
1	A	80	ALA	2.7
1	A	167	HIS	2.6
1	A	312	LYS	2.6
1	A	198	PRO	2.6
1	A	74	ASP	2.5
1	A	128	HIS	2.4
1	A	2	ILE	2.4
1	A	206	LEU	2.4
1	A	199	LYS	2.4
1	A	248	LEU	2.3
1	A	173	GLN	2.3
1	A	193	LEU	2.3
1	A	18	GLN	2.3
1	A	177	SER	2.3
1	A	67	LEU	2.2
1	A	245	SER	2.1
1	A	170	HIS	2.1
1	A	174	ASP	2.0
1	A	129	GLN	2.0

6.2 Non-standard residues in protein, DNA, RNA chains [i](#)

There are no non-standard protein/DNA/RNA residues in this entry.

6.3 Carbohydrates [i](#)

There are no oligosaccharides in this entry.

6.4 Ligands [i](#)

In the following table, the Atoms column lists the number of modelled atoms in the group and the number defined in the chemical component dictionary. The B-factors column lists the minimum, median, 95th percentile and maximum values of B factors of atoms in the group. The column labelled 'Q< 0.9' lists the number of atoms with occupancy less than 0.9.

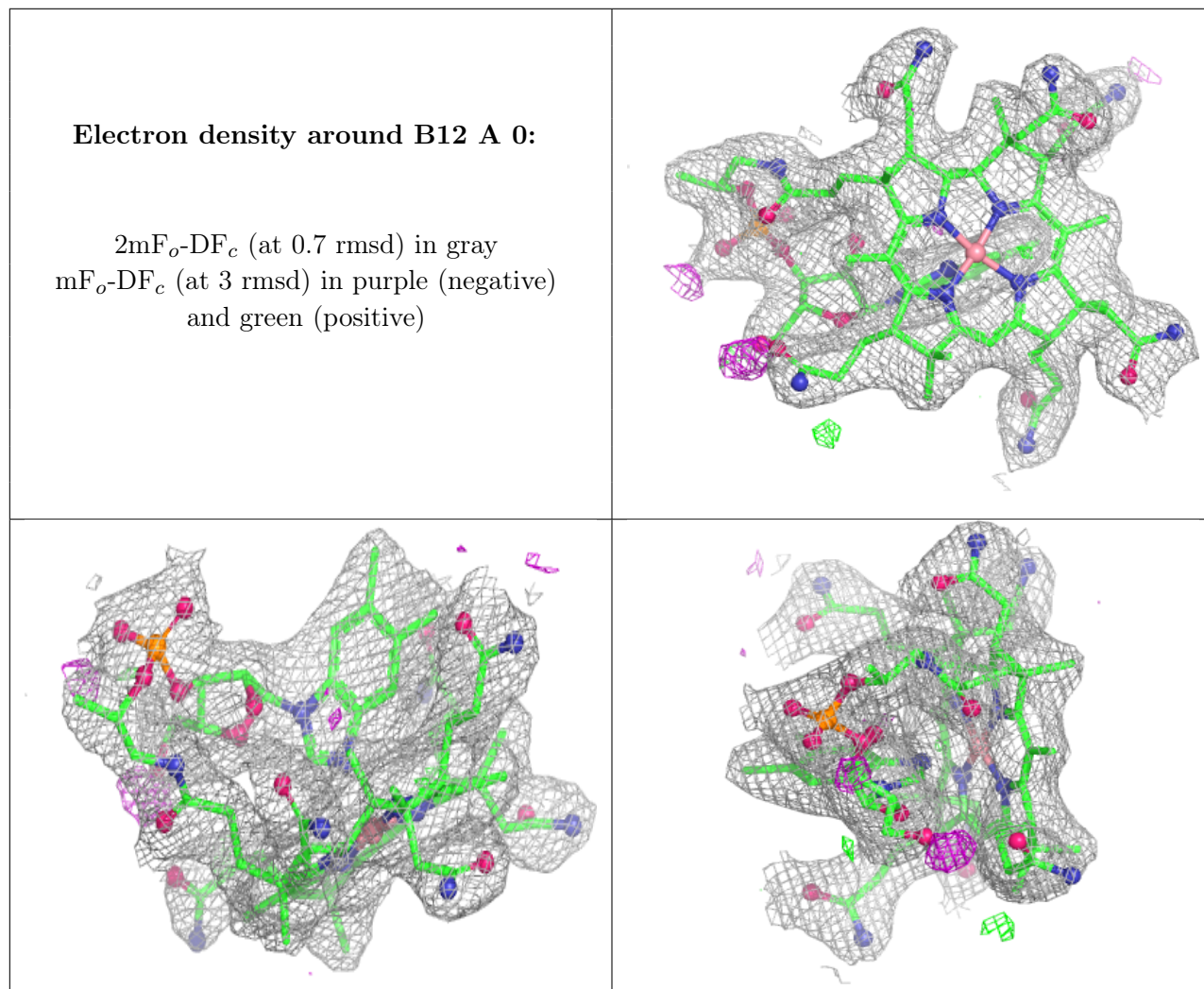
Mol	Type	Chain	Res	Atoms	RSCC	RSR	B-factors(Å ²)	Q<0.9
2	CL	A	417	1/1	0.90	0.09	65,65,65,65	0
3	B12	A	0	91/91	0.97	0.07	27,34,46,62	0

Continued on next page...

Continued from previous page...

Mol	Type	Chain	Res	Atoms	RSCC	RSR	B-factors(\AA^2)	Q<0.9
2	CL	A	415	1/1	0.98	0.14	37,37,37,37	0
2	CL	A	416	1/1	0.99	0.11	35,35,35,35	0

The following is a graphical depiction of the model fit to experimental electron density of all instances of the Ligand of Interest. In addition, ligands with molecular weight > 250 and outliers as shown on the geometry validation Tables will also be included. Each fit is shown from different orientation to approximate a three-dimensional view.



6.5 Other polymers [i](#)

There are no such residues in this entry.